

Independent and combined effects of nutrition and sanitation interventions on child growth in rural Cambodia: a factorial cluster-randomized controlled trial

Amanda Lai¹, Irene Velez², Ramya Ambikapathi³, Krisna Seng², Oliver Cumming⁴, Joe Brown⁵

¹ School of Civil and Environmental Engineering, Georgia Institute of Technology, Atlanta, Georgia, USA

² MSI, A Tetra Tech Company, Arlington, Virginia, USA

³ Department of Public Health, Purdue University, West Lafayette, Indiana, USA

⁴ Department of Disease Control, Faculty of Infectious and Tropical Diseases, London School of Hygiene and Tropical Medicine, London, UK

⁵ Department of Environmental Sciences and Engineering, Gillings School of Global Public Health, University of North Carolina at Chapel Hill, Chapel Hill, North Carolina, USA

Abstract

Background

Childhood exposure to fecal pathogens contributes to growth faltering, which is linked with adverse side effects later in life. The prevalence of stunting remains high in rural Cambodia, despite rapid economic development over the last two decades. This study aimed to assess the independent and combined effects of nutrition and sanitation programming on child growth outcomes in rural Cambodia.

Methods

We conducted a factorial cluster-randomized controlled trial of 4,015 households with 4,124 children (1-28 months of age) across rural Cambodia. Fifty-five communes (clusters) were randomly assigned to a control arm or one of three treatments: a nutrition-only arm, a sanitation-only arm, and a combined nutrition and sanitation arm receiving both treatments. The primary outcome was length-for-age Z-score (LAZ). Secondary outcomes were weight-for-age Z-score (WAZ), weight-for-height Z-score (WHZ), stunting, wasting, underweight, and caregiver-reported diarrhea. Analysis was by intention-to-treat. The trial was pre-registered with ISRCTN Registry ([ISRCTN77820875](https://www.isrctn.com/ISRCTN77820875)).

Findings

Compliance in the arms receiving the nutrition intervention was high, but compliance in the arms receiving the sanitation intervention was low. Compared with a mean LAZ of -1.04 (SD 1.2) in the control arm, children in the nutrition-only arm (LAZ +0.08, 95% CI: -0.01-0.18) and combined nutrition and sanitation arm (LAZ +0.10, 95% CI: 0.01-0.20) experienced greater linear growth; there were no measurable differences in LAZ in the sanitation-only arm. Similarly, compared with a mean WAZ of -1.05 (SD 1.1) in the control arm, children in the nutrition-only arm (WAZ +0.10, 95% CI 0.00-0.19) and combined-intervention arm (WAZ +0.11, 95% CI 0.03-0.20) were heavier for their age; there was no measurable difference in WAZ in the sanitation-only arm. There were no differences between arms in prevalence of stunting, wasting, underweight status, or one week period prevalence of diarrhea.

Interpretation

Improvements in child growth in nutrition and combined nutrition and sanitation arms are consistent with other recent trials but we found no evidence that this sanitation intervention improved child growth. The sanitation intervention achieved only modest changes in sanitation access and use suggesting that more effective approaches are needed to reduce open defecation in this setting.

Funding

United States Agency for International Development (USAID). The contents of this publication are the sole responsibility of the authors and do not necessarily reflect the views of USAID or the United States Government.

Background

Childhood undernutrition is associated with higher risk of infectious disease morbidity and mortality, reduced cognitive function, and various adverse outcomes later in life¹. Growth faltering is an effect of chronic undernutrition, and tends to be concentrated in the first two years of life². The relationship between breastfeeding and overall good nutrition and undernutrition is well understood^{3,4}, and, consequently, many studies have focused on improving infant and child nutrition to achieve better growth outcomes⁵⁻⁷. However, these interventions alone have not been successful in eliminating stunting⁵, suggesting that broader interventions which address other important factors are needed alongside exclusive breastfeeding and improved nutritional intake⁸. Reducing early childhood exposure to infectious agents through safe water, sanitation, and hygiene (WASH) is one such potentially important complimentary intervention.

WASH plausibly reduces undernutrition⁹ by at least three important pathways: diarrheal diseases, intestinal worm infections, and subclinical gut damage¹⁰. First, diarrhea is attributable to inadequate WASH¹¹ and is both a cause and effect of undernutrition because children with diarrhea absorb fewer nutrients, possibly leading to further susceptibility to infections¹². The risk of stunting has been estimated to increase multiplicatively with each diarrheal episode before 24 months of age¹³. Second, infection by soil-transmitted helminths (e.g., *Ascaris*, *Trichuris*, or hookworm) from fecal-contaminated soil – common where WASH is inadequate – can lead to anemia, poor absorption of nutrients, and other effects on gut health including impaired digestion and diarrhea¹⁴. Finally, there is evidence that chronic exposure to enteric pathogens may result in changes to gut structure and function described as environmental enteric dysfunction (EED). EED is characterized in part by chronic inflammation, reduced nutrient absorption, and weakened barrier function of the small intestine^{15,16}, although the pathogenesis of EED and the mechanism by which faltered growth occurs are yet to be defined^{17,16,17}.

Among WASH interventions, sanitation as a means to reducing stunting has received significant attention in the last decade. Many observational studies have found strong associations between child growth faltering and poor access to sanitation studies in Cambodia¹⁸, Indonesia¹⁹, and India²⁰. However, recent randomized controlled trials (RCTs) in Zimbabwe²¹, Bangladesh⁶, and Kenya⁷ that delivered standalone household-level sanitation interventions (not coupled with other nutrition or hygiene interventions) were not found to improve child growth.

The community-led total sanitation (CLTS) framework is a relatively new approach to ending open defecation through behavioral change and community self-enforcement rather than through the provision of hardware and materials²². CLTS and other rural promotion-based interventions shift the focus from individual and household sanitation practices to a community-level concern over open defecation by triggering collective behavior change through powerful emotional drivers such as shame and disgust, as well as positive motivators such as improved healthy, dignity, and pride^{23,24}. Observational studies in Cambodia²⁵, India²⁶, Ecuador²⁷ and elsewhere^{28,29} found higher community-level sanitation coverage to be associated with reduced prevalence of stunting. Despite this, recent RCTs employing promotion-based interventions have found mixed effects on child growth. One trial was found to be successful in improving child growth in Mali³⁰, but this effect was not observed in other trials in Tanzania³¹, Indonesia³², nor India^{33,34}.

Here, we add to a growing literature to evaluate the impact of combined nutrition and sanitation interventions on children growth. We used a factorial cluster-randomized controlled trial (cRCT) to assess the independent and combined effects of nutrition and sanitation interventions delivered in the context of a large-scale, USAID-funded rural nutrition and sanitation/hygiene program in Cambodia. We hypothesized that children receiving both sanitation and nutrition interventions would have increased linear growth compared with children from control areas. We further hypothesized that combined nutrition and sanitation interventions would lead to synergistic improvements in linear growth beyond that realized in either standalone intervention arm.

Methods

Study setting and population

We employed a two-by-two factorial cluster-randomized controlled trial in rural communes in three provinces in Cambodia: Battambang, Pursat, and Siem Reap. The target communes had at least 30% of the population living below the poverty line and did not have latrine subsidies in place at the time of intervention. Of a list of 82 eligible communes, 27 were excluded as pilot activities had already been launched, and the remaining 55 target communes were randomly assigned to one of three treatment arms (n=36 communes) or control arm (n=19 communes). The number of communes assigned to the control arm (19 versus 12 communes in each treatment arm) was greater to enhance statistical efficiency of multiple hypothesis testing³⁵ (Figure 1).

Randomization and masking

In 2015, prior to the start of project activities, we randomly assigned the communes to one of three treatment arms (nutrition only, sanitation/hygiene only, combine nutrition and sanitation/hygiene) or control arm using a random number generator with reproducible seed in Stata (Stata, College Station, TX). Randomization was conducted at a cluster level to limit the risk of contamination between study arms. All villages within each treatment commune received the assigned interventions for their respective commune. Allocation was communicated directly to Save the Children and Foundation of Netherlands Volunteers (SNV), who rolled-out interventions based on this randomized assignment. Following randomization, three communes were dropped from the trial due to objections from the local governments of overlap with other current programming. This resulted in 55 communes with treatment arms of different sizes: 11 communes in nutrition-only arm; 13 in sanitation-only arm; 12 in combined-intervention arm (Figure 1). Neither participants nor field staff were masked to treatment status due to the nature of the interventions. Participants were not told about other communes receiving interventions, and field staff did not discuss the trial with participants. The data collection team was blinded to the treatment assignment, number of treatment arms, and knowledge of a control arm.

Interventions procedures

The intervention was delivered in the 36 intervention communes over the course of two years, between 2015-2017, while the remaining 19 control communes were unexposed to the program. Two international non-governmental organizations – Save the Children and SNV – provided programmatic implementation and coordinated activities with local governments.

The nutrition interventions included complementary feeding activities and education through community-based growth promotion sessions, caregiver groups, home visits, and conditional cash transfers (CCTs) linked to the utilization of key health and nutrition services focusing on

first 1,000 days of life. The sanitation interventions consisted primarily of CLTS as it was delivered here, latrine vouchers coupled with supply-side support for sanitation and hygiene products, and social behavior change communications (SBCC). Intervention activities are summarized in Table 1 below and detailed in Supplemental Information.

Table 1: Summary of intervention activities

	Intervention activity	Frequency
NUTR		
	Community dialogues led by village chief and VHSG to support children's growth	Quarterly
	Caregiver group sessions led by local women trained by staff to promote 13 key stunting prevention behaviors	Monthly
	GMP sessions led by VHSGs to monitor growth and refer children who were sick or not growing well to health centers	Monthly
	Home visits to pregnant women, caregivers of children 9-11 months old, and caregivers of children not growing well to promote childcare and feeding, home hygiene, latrine, and handwashing	Monthly
	Village fair help twice per year to offer hands-on learning experiences (health/nutrition, WASH and agricultural using games, latrine marketing and sales	Twice per year
	CCT (cash for antenatal and postnatal care visits and adherence to handwashing stations), vouchers for water filters and food baskets	Up to six payments over first 1,000 days of child life
SAN		
	CLTS triggering session	Once
	Door-to-door visits to provide information about sanitation/latrines	At least five times per village
	Latrine vouchers to subsidize poor households in villages that reached 75% sanitation coverage to achieve sufficient open defecation free (ODF) coverage	Once, as needed
	Promoted supply-side support by connecting small- and medium-sized enterprises (SMEs) with communes after triggering event	Continuously
NUTR+SAN		
	All activities described in NUTR and SAN groups above	See above
CTRL		
	None	N/A

Enumerators completed in-home interviews with the primary caregiver of children in the household using a survey which based the majority of questions on validated Cambodia DHS questionnaires. Field staff asked caregivers questions about basic household member information; health and diet of children up to age 28 months; hygiene, water and sanitation practices; pregnancies and child births of the caregiver; intervention exposure and participation; household WASH conditions, and household assets/characteristics to build wealth scores.

Data collection

Final measurements took place in August 2019, 28 months after the end of the roll-out period. The trial enrolled primary caregivers with a child that was born during or after time of exposure to the interventions (1 - 28 months at time of our study) and who had lived in the commune during the child's entire life, resulting in a participant population of children 1-28 months old. Data collection was completed by KHANA Center for Population Health Research, with oversight and support from Management Systems International (MSI).

All surveys were communicated in the Khmer language. A primary survey was conducted to assess household and child-level risk factors of children under 28 months of age. Enumerators completed in-home interviews with the primary caregiver of children in the household about basic household member information; breastfeeding and nutrition of children up to age 28 months; hygiene, water and sanitation practices; pregnancies and child births of the caregiver; intervention exposure and participation; household WASH conditions; and household assets/characteristics to construct wealth scores. Child height and weight were measured by trained paired enumerators following guidelines from the Food and Nutrition Technical Assistance project (FANTA)³⁶; measurement protocols are described in detail in Supplemental Information³⁷.

For nutrition-related data collection, we included the infant and young children feeding indicators suggested by the World Health Organization (WHO), which include minimum dietary diversity, minimum meal frequency, and minimum adequate diet³⁸. WHO dietary diversity score consists of categorizing solid foods into seven food groups, including: grains, legumes/nuts, dairy, flesh meat, eggs, vitamin-A-rich fruits and vegetables, and other fruits and vegetables. To suit the Cambodian context, the evaluation team asked additional questions on the types of fish and other wild animals consumed, which are included in the flesh meat group. The dietary diversity score is on a scale from 0 – 7 and determined based on the number of food groups the caregiver reported to have fed the child in the last 24 hours; minimum dietary diversity is defined as having received food from four or more food groups (or a dietary diversity score greater than or equal to four). Minimum meal frequency is defined by the frequency of solid and semi-solid foods received based on a child's age and whether the child is breastfed. The minimum number of times breastfed children should receive solid, semi-solid, or soft foods varies with age (2 times if 6–8 months and 3 times if 9–23 months). The minimum number of times non-breastfed children should receive solid, semi-solid, or soft foods, including milk, is 4 times for all children 6–23 months.

As part of a supplemental analysis to assess the effects of key community-level WASH indicators, a secondary survey was conducted in households randomly selected in the same areas (three households per village) and irrespective of whether there was a child living in the household. Given the oversampling of households with children under 28 months of age, post-stratification weights were used to get a representative sample of the population. Sampling weights were calculated as follows: first, we estimated the proportion of households with children under 28 months of age at the village-level by creating a list of eligible children with the village chief and VHSg. This estimate was then divided by the proportion of sampled households with children under 28 months of age at each village to yield the sampling weight for each household from the main sample. For the three additional households, the sampling weights

were calculated by dividing the remaining proportion of total households at the village level by the proportion of sampled households at each village. This resulted in underweighting the households with children under 28 months of age and overweighting the supplemental households.

Outcomes

The primary outcome was length-for-age Z-score (LAZ) at (timepoint). Secondary outcomes were weight-for-age Z-score (WAZ), weight-for-height Z-score (WHZ), caregiver reported diarrhea; proportion of children stunted (LAZ<-2), underweight (WAZ<-2), and wasted (WHZ<-2); and all-cause mortality.

Statistical analysis

We performed an intention-to-treat (ITT) analysis for all outcomes using generalized estimating equations to account for clustering at the village level. We used ordinary least squares linear regression to estimate mean differences between treatment arms compared to the control arm and between standalone treatment arms compared to the combined treatment arm for LAZ, WAZ, and WHZ. We used Poisson regression to estimate the prevalence ratio between arms for diarrhea, stunting, wasting, and underweight status.

Sample size was chosen to balance the size of the study and the minimum detectable difference between arms. Power calculations used $\alpha=0.05$, power=0.8, mean LAZ estimate (prior to intervention rollout) of -0.96 with a standard deviation of 1.19, intra-cluster correlation of 0.014 on the LAZ outcome measure at the commune level, and a two-sided test for a two-sample comparison of means. LAZ calculations used a standard equation assuming a single, post-treatment measurement at 2 years, resulting in a total of 4,015 households consisting of 73 observations per commune. These sample size calculations suggest that this study had sufficient power to detect a minimum detectable effect size (MDES) of 0.19 for differences in the LAZ scores between treatment arms and a MDES of 0.18 for differences between each treatment arm and the control arm. An MDES of 0.19 translates to a 23.4% change in LAZ score between treatment arms³⁹; an MDES of 0.18 translates to a 22.2% change in LAZ scores between treatment and control arms. While empirical evidence to serve as an adequate basis for the MDES was limited, the WASH-Benefits efficacy trial set its sample size to detect a similar LAZ MDES of 0.18 between treatment arms and a MDES of 0.15 in mean LAZ scores between treatment and control arms^{6,7}.

Covariates were considered as potential confounders using a “common cause” approach⁴⁰ and on the basis of the conceptual framework of variables correlated with diet and WASH conditions as well as nutritional status⁹. We also considered covariates that were found to be both significantly associated with primary outcome measures and imbalanced across treatment arms before intervention delivery, of which only pre-intervention village-level sanitation coverage met the criteria (Supplemental Information). We calculated household wealth using an asset-based wealth index using methodology provided by the Demographic and Health Survey (DHS)³⁷, constructed using principal component analysis excluding WASH assets⁴¹. In the adjusted analyses, we included the following covariates, identified *a priori*: child sex (dichotomous), child age (continuous, in months), maternal age (continuous, in years), maternal education (ordinal, based on mother’s highest level of education attended), number of household members

(continuous), household wealth index quintile (ordinal), and community-level open defecation (OD) measured at prior to intervention rollout (continuous).

Role of the funding source

This study was funded by USAID. USAID had no role in study design, data collection, data analysis, data interpretation, or writing of the manuscript. The contents of this publication are the sole responsibility of the authors and do not necessarily reflect the views of USAID or the United States Government.

Ethics

The study received approval from the National Ethics Committee for Health Research in the Cambodian Ministry of Health, Georgia Institute of Technology, and New England Institutional Review Board. Prior to any data collection, the trial was explained to participants in the Khmer language. Written and verbal consent were obtained prior to administering the surveys and anthropometry measurements. The trial was pre-registered with ISRCTN Registry ([ISRCTN77820875](https://www.isrctn.com/ISRCTN77820875)).

Results Table 2 shows household and caregiver characteristics across treatment and control groups. Most were similar across groups. Primary caregivers in the control group reported lower levels of primary school attendance compared to the treatment groups, but paternal primary school attendance was similar. Households in the nutrition-only and sanitation-only groups had higher wealth (ex-WASH) index scores compared to households in the combined intervention and control groups. The survey was conducted during the rainy season, which generally represents increased access to an improved source of drinking water. The control group had a higher prevalence of improved water source as their main source of drinking water compared to the treatment groups.

Figure 1 shows the flow diagram through the phases of the trial. Details about participant inclusion and exclusion can be found in Supplemental Information. 4,015 households participated in endline surveys; 4,005 households were included in these analyses (10 were excluded due to incomplete surveys), and 4,124 children had anthropometry measures taken.

Table 2: Household and caregiver characteristics

	Nutrition-only		Sanitation-only		Combined		Control	
	Mean	95% CI	Mean	95% CI	Mean	95% CI	Mean	95% CI
Buddhist	0.98	(0.97, 0.99)	0.97	(0.96, 0.98)	0.96	(0.95, 0.97)	0.99	(0.98, 0.99)
Married or living together	0.95	(0.93, 0.96)	0.94	(0.92, 0.95)	0.94	(0.92, 0.95)	0.95	(0.94, 0.96)
Maternal age (years)	32.0	(31.2, 32.7)	31.1	(30.4, 31.9)	31.9	(31.2, 32.5)	31.0	(30.5, 31.5)
Primary caregiver has attended primary school	0.87	(0.85, 0.89)	0.87	(0.84, 0.89)	0.88	(0.85, 0.89)	0.81	(0.79, 0.83)
Spouse has attended primary school	0.90	(0.88, 0.92)	0.86	(0.83, 0.88)	0.87	(0.85, 0.89)	0.87	(0.85, 0.89)
Household size	5.63	(5.48, 5.78)	5.54	(5.40, 5.69)	5.36	(5.24, 5.47)	5.52	(5.42, 5.62)
Number of children in HH	2.61	(2.52, 2.70)	2.61	(2.51, 2.70)	2.43	(2.36, 2.50)	2.43	(2.37, 2.49)
Has electricity	0.73	(0.70, 0.76)	0.74	(0.71, 0.77)	0.76	(0.73, 0.78)	0.75	(0.72, 0.77)
Owns a mobile phone	0.93	(0.92, 0.95)	0.90	(0.88, 0.92)	0.87	(0.85, 0.89)	0.90	(0.89, 0.92)
Has a finished floor [1]	0.92	(0.90, 0.94)	0.93	(0.91, 0.95)	0.96	(0.94, 0.97)	0.96	(0.95, 0.97)
Wealth (ex-WASH) index score	0.06	(-0.06, 0.19)	0.19	(0.05, 0.33)	-0.02	(-0.14, 0.09)	-0.12	(-0.21, -0.03)
Improved drinking water source [2]	0.59	(0.56, 0.62)	0.56	(0.52, 0.59)	0.61	(0.58, 0.64)	0.70	(0.68, 0.72)
Has water source on site	0.68	(0.64, 0.71)	0.58	(0.55, 0.61)	0.60	(0.57, 0.63)	0.65	(0.62, 0.67)
Water source is <5 min, roundtrip	0.20	(0.16, 0.25)	0.23	(0.19, 0.28)	0.24	(0.19, 0.29)	0.34	(0.29, 0.39)
Reported minutes to fetch water, roundtrip	12.42	(10.6, 14.2)	14.14	(12.5, 15.8)	14.50	(13.1, 15.9)	13.56	(12.3, 14.8)

[1] Finished floor defined as floor made of wood plans, palm/bamboo, parquet or polished wood, vinyl or asphalt strips, ceramic tiles, cement tiles, or cement. Floor materials were classified by enumerator observation. [2] Improved sources of drinking water include: piped water into dwelling/yard/plot, public tap or standpipe, tube well or borehole, protected dug well, protected spring, bottled water, and rainwater.

Nutrition intervention fidelity was high, with households in the nutrition-only and combined-intervention arms reporting significantly higher participation in these activities compared to the sanitation-only and control groups (Table 3). Fidelity was measured based on self-reported participation in eight key nutrition activities: community dialogues (quarterly); caregiver group education course (monthly); village fairs (bi-annually); growth monitoring program (monthly); home health visits from VHSG (monthly); CCT with rolling enrollment (disbursed payments as participants met the various conditions); food vouchers (delivered once to CCT participants); and water filter vouchers (delivered once to CCT participants). Approximately 60% of households in the nutrition-only and combined-intervention arms reported participating in at least four of the eight nutrition intervention activities, compared to 4% in the sanitation-only and control arms. Conversely, sanitation intervention fidelity was very low (Table 3), which was measured by self-reported CLTS participation. Only 6% of households in the sanitation-only and control arms reported participating in any CLTS activity, compared to 14% of households in the nutrition-only arm and 25% in the combined-intervention arm.

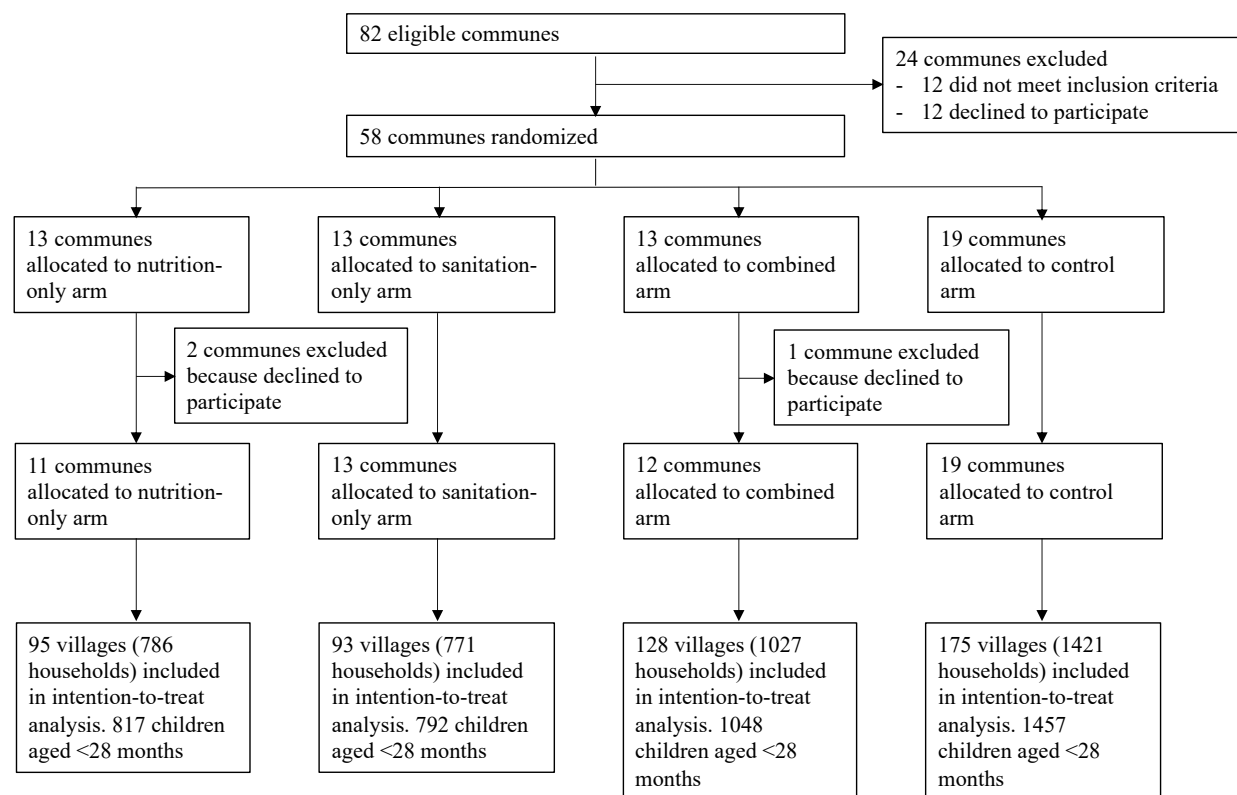


Figure 1: Trial profile

Intervention compliance were assessed 28 months after the intervention (Table 4). More households in the control arm (70%) had an improved water source as their main source of drinking water, compared to other arms (approximately 60% in all arms). The combined intervention arm had greater access to improved sanitation facilities (61%) compared to the nutrition-only (55%) sanitation-only (51%), and control (52%) arms. OD was practiced less in the combined intervention arm (7%) compared to the nutrition-only (14%), sanitation-only (16%), and control (16%) arms. Notably, the sanitation-only arm experienced a significantly higher increase in sanitation coverage (+25%) compared to all other arms (+14% in nutrition-only arm, +19% in combined and control arms). We assessed four key caregiver behaviors related to environmental hygiene: drink and use clean water, handwashing with soap and water at critical times, proper disposal of children’s stools, and provision of safe play environments for children. Implementation programming encouraged safe handwashing behaviors as part of the “First 1,000 Days” activities and the nutrition CCT. Those in the nutrition-only arm (7%) and combined-intervention arm (9%) had greater awareness of critical handwashing times compared to those in the sanitation-only arm (4%) and control arm (4%), though levels were still low. There was slightly higher prevalence of soap and water observed at handwashing stations in the combined-intervention (72%) and control (76%) arms than the nutrition-only (69%) and sanitation-only (70%) arms. Proper disposal of children’s stools includes discarding into a toilet/latrine or burying; improper disposal practices include discarding feces into a drain, garbage or other solid waste, or leaving in the open. Nutrition-only and combined intervention arms reported higher levels of proper disposal (71% and 74%, respectively) compared to the sanitation-only and control arms (65% and 68%, respectively). Few households were found to have safe play environments, defined as being free of observed human feces, animal feces,

garbage/household waste, and sharp objects/other harms. 25% of households in the combined intervention arm had child play environments free of feces observed by enumerators at the time of the household visit, compared to 21% in the nutrition-only, sanitation-only, and control arms. More households in the nutrition-only (78%) and combined-intervention (89%) arms brought children to health centers for monthly GMP visits than sanitation-only (23%) and control (33%) arms. There were no differences in breastfeeding behaviors between intervention and control arms, with 60-70% of each arm reporting continuous breastfeeding for children for the first two years. There were no statistically meaningful differences in dietary diversity score, minimum dietary diversity, and minimum meal frequency across the four arms. A theory of change diagram is included in Supplemental Information.

Table 3: Intervention fidelity indicators

	Nutrition-only			Sanitation-only			Combined			Control		
	N	n	%	N	n	%	N	n	%	N	n	%
Participated in any "First 1,000 Days" type activity [1]	817	615	75%	792	145	18%	1,055	813	77%	1,460	383	26%
Participated in any GMP	817	641	78%	792	181	23%	1,055	935	89%	1,460	482	33%
Received home visit VHSG	817	518	63%	792	227	29%	1,055	661	63%	1,460	490	34%
Enrolled in any CCT program for health and nutrition [2]	817	224	27%	792	19	2%	1,055	228	22%	1,460	31	2%
Received any voucher for food basket [3]	817	440	54%	792	1	0%	1,055	554	53%	1,460	6	0%
Received any voucher for water filter	817	41	5%	792	40	5%	1,055	149	14%	1,460	100	7%
Aware of <i>Grow Together</i> campaign [4]	817	353	43%	792	93	12%	1,055	471	45%	1,460	149	10%
Participation in nutrition intervention activities: none (0 of 8)	817	65	8%	792	404	51%	1,055	44	4%	1,460	585	40%
Participation in nutrition intervention activities: low (1-3 of 8)	817	262	32%	792	359	45%	1,055	367	35%	1,460	809	55%
Participation in nutrition intervention activities: med (4-6 of 8)	817	387	47%	792	29	4%	1,055	501	47%	1,460	65	4%
Participation in nutrition intervention activities: high (7-8 of 8)	817	103	13%	792	0	0%	1,055	143	14%	1,460	1	0%
Sanitation												
Any CLTS participation [5]	817	115	14%	792	46	6%	1,055	261	25%	1,460	81	6%
Received any voucher to build latrine [6]	817	66	8%	792	51	6%	1,055	123	12%	1,460	84	6%

[1] "First 1,000 Days" activities were administered in nutrition-only and combined arms and include: community dialogues, caregiver group education sessions, and village fairs. [2] CCT program ended in Jan 2019 and the Government of Cambodia started a new CCT program in July 2019 across study area. CCT program administered in nutrition-only and combined arms only. [3] Vouchers for water filter and food baskets were targeted subsidies distributed to CCT participants in nutrition-only and combined arms. [4] *Grow Together* campaign was part of the nutrition programming (nutrition-only and combined arms). However, three TV spots were seen across all four arms. [5] In sanitation-only and combined arms, the Ministry of Rural Development confirmed that the project was the only CLTS campaign active in those areas. [6] Latrine vouchers were targeted subsidies given to households in villages that reached 75% sanitation coverage in sanitation-only and combined arms.

Table 4: Intervention compliance indicators (28-months after intervention)

Nutrition	Nutrition-only			Sanitation-only			Combined			Control		
	N	n or mean	% or SD	N	n or mean	% or SD	N	n or mean	% or SD	N	n or mean	% or SD
Visited health facility for at least four antenatal care check-ups	697	632	91%	712	646	91%	910	819	90%	1,257	1116	89%
Brought child for monthly GMP at community or health center	817	641	78%	792	181	23%	1,055	935	89%	1,460	482	33%
Breastfeeding exclusively for children <6 months	171	109	64%	161	110	68%	205	140	68%	272	182	67%
Ever breastfed (all children)	817	797	98%	792	765	97%	1,048	1021	97%	1,457	1420	97%
Solid and semi-solid foods eaten for children >6 months	646	609	94%	631	611	97%	843	792	94%	1,185	1134	96%
Dietary diversity score (0-7)	817	2.24	1.61	792	2.19	1.58	1,048	2.20	1.62	1,457	2.33	1.59
Achieved minimum dietary diversity	817	202	25%	792	177	22%	1,048	247	24%	1,457	350	24%
Achieved minimum meal frequency	817	537	66%	792	518	65%	1,048	680	65%	1,457	977	67%
Achieved minimum acceptable diet	817	170	21%	792	159	20%	1,048	205	20%	1,457	310	21%
Sanitation												
Had improved sanitation facility [1]	816	452	55%	791	400	51%	1,054	638	61%	1,459	759	52%
Open defecation	817	112	14%	792	126	16%	1,055	73	7%	1,460	231	16%
Used shared toilet	817	252	31%	791	264	33%	1,054	343	33%	1,459	468	32%
Caregiver reported adults in HH openly defecating	697	92	13%	658	116	18%	973	118	12%	1,208	213	18%
Time to get to toilet, one way (minutes)	171	4.22	4.11	166	3.92	3.83	219	4.74	8.17	291	5.05	8.27
Reported latrine built as a result of CLTS activity	115	51	44%	46	15	33%	261	91	35%	81	28	35%
Reported latrine built using latrine voucher	50	10	20%	15	4	27%	91	37	41%	28	12	43%
Main reason for not constructing latrine: lack of funds	20	17	85%	18	14	78%	60	55	92%	14	14	100%
Main reason for construction latrine: privacy	51	7	14%	15	6	40%	91	6	7%	28	7	25%
Main reason for construction latrine: security	51	10	20%	15	2	13%	91	20	22%	28	4	14%
Main reason for construction latrine: hygiene	51	17	33%	15	5	33%	91	43	47%	28	10	36%
Main reason for construction latrine: OD is harmful	51	5	10%	15	1	7%	91	9	10%	28	5	18%
Child stools properly disposed of [2]	817	581	71%	792	515	65%	1,055	781	74%	1,460	993	68%
Community-level open defecation before intervention	817	28%	27%	792	41%	33%	1,055	28%	28%	1,460	32%	31%

Community-level open defecation after intervention	817	14%	21%	792	16%	21%	1,055	9%	17%	1,460	13%	20%
Environmental hygiene												
Child stools left in the open	817	147	18%	792	170	21%	1,055	160	15%	1,460	315	22%
Child play environment observed to be free of animals	817	182	22%	792	187	24%	1,055	261	25%	1,460	294	20%
Child play environment observed to be free of garbage/HH waste	817	298	36%	792	290	37%	1,055	419	40%	1,460	567	39%
Child play environment observed to be free of sharp objects	817	449	55%	792	427	54%	1,055	639	61%	1,460	818	56%
Child play environment observed to be free of feces	817	313	38%	792	304	38%	1,055	448	42%	1,460	555	38%
[1] Improved sanitation facilities include: flush/pour flush toilet to a piped sewer system, septic tank or pit latrine, a ventilated improved pit latrine, a pit latrine with slab, and a composting toilet. [2] Proper disposal of children feces consist of putting or rinsing stool into a sanitation facility or burying it; improper disposal of children feces includes putting or rinsing stool into a drain or ditch, throwing it into garbage or leaving it in the open.												

Mean LAZ in the control arm was -1.04 (SD 1.20). Compared with control, children in the nutrition-only arm were taller by a mean of 0.08 LAZ (95% CI -0.01-0.18), and children in the combined-intervention arm were taller by 0.10 LAZ (95% CI 0.01-0.20), although these differences were not observed in the adjusted analyses (Table 5, Figure 2). Children in the nutrition-only arm and combined-intervention arm were heavier than children in the control arm by a mean of 0.10 WAZ (95% CI 0.00-0.19) and 0.11 (95% CI 0.03-0.20), respectively. These differences were slightly attenuated in the adjusted analyses (Table 5). No differences were observed between the control arm and intervention arm in terms of WHZ.

Compared to children in the standalone intervention arms, children in the combined intervention arm were taller and heavier than children in the sanitation-only arm, with children in the sanitation-only arm averaging -0.16 LAZ (95% CI -0.27- -0.04) and -0.10 WAZ (-0.20- -0.01) compared to children in the control arm. These differences were attenuated in the adjusted analysis, and we only observed an adjusted mean difference of -0.13 LAZ (95% CI -0.23- -0.02) in the sanitation-only arm compared to the combined intervention arm (Table 5).

Table 5: Effects of interventions on height/length and weight (Primary outcome (LAZ) and secondary outcomes (WAZ, WHZ))

	N	Mean	SD	Compared to control arm		Compared to combined intervention arm	
				Unadjusted mean difference (95% CI)	Adjusted mean difference (95% CI)	Unadjusted mean difference (95% CI)	Adjusted mean difference (95% CI)
LAZ							
Nutrition-only	798	-0.95	1.16	0.08 (-0.01, 0.18)	0.09 (-0.01, 0.19)	-0.02 (-0.12, 0.09)	0.01 (-0.09, 0.11)
Sanitation-only	777	-1.09	1.23	-0.05 (-0.16, 0.05)	-0.05 (-0.15, 0.05)	-0.16 (-0.27, -0.04)	-0.13 (-0.23, -0.02)
Combined	1037	-0.94	1.16	0.10 (0.01, 0.20)	0.08 (-0.01, 0.17)	--	--
Control	1443	-1.04	1.20	--	--	--	--
WAZ							
Nutrition-only	815	-0.95	1.29	0.10 (0.00, 0.19)	0.10 (0.01, 0.20)	-0.02 (-0.12, 0.08)	0.01 (-0.08, 0.11)
Sanitation-only	792	-1.04	1.13	0.01 (-0.07, 0.09)	0.01 (-0.07, 0.09)	-0.10 (-0.20, -0.01)	-0.08 (-0.17, 0.00)
Combined	1044	-0.94	1.11	0.11 (0.03, 0.20)	0.09 (0.01, 0.17)	--	--
Control	1452	-1.05	1.10	--	--	--	--
WHZ							
Nutrition-only	814	-0.60	1.04	0.06 (-0.03, 0.15)	0.06 (-0.02, 0.15)	-0.02 (-0.12, 0.08)	0.00 (-0.09, 0.09)
Sanitation-only	790	-0.59	0.98	0.06 (-0.02, 0.14)	0.05 (-0.03, 0.13)	-0.02 (-0.11, 0.07)	-0.01 (-0.10, 0.08)
Combined	1043	-0.58	1.03	0.08 (0.00, 0.16)	0.06 (-0.02, 0.14)	--	--
Control	1452	-0.65	0.98	--	--	--	--
Covariates in adjusted analyses include: child sex, child age, maternal age, maternal education, number of household members, household wealth index quintile, and community-level OD measured prior to intervention delivery							

Compared with the control arm, none of the intervention arms differed in the prevalence of children who experienced stunting, wasting, diarrhea (7-day recall), or mortality. Fewer children in the combined-intervention arm were found to be underweight compared to the control arm (PR 0.82, 95% CI 0.68-0.99), although these differences were attenuated in the adjusted analysis (Table 6). Comparing the combined intervention arm to the standalone intervention arms, the combined-intervention appeared to be protective of stunting and underweight status (PR 1.2, 95% CI 1.0-1.5; PR 1.2, 95% CI 1.0-1.5, respectively); however, these differences were also attenuated in the adjusted analyses (Table 6).

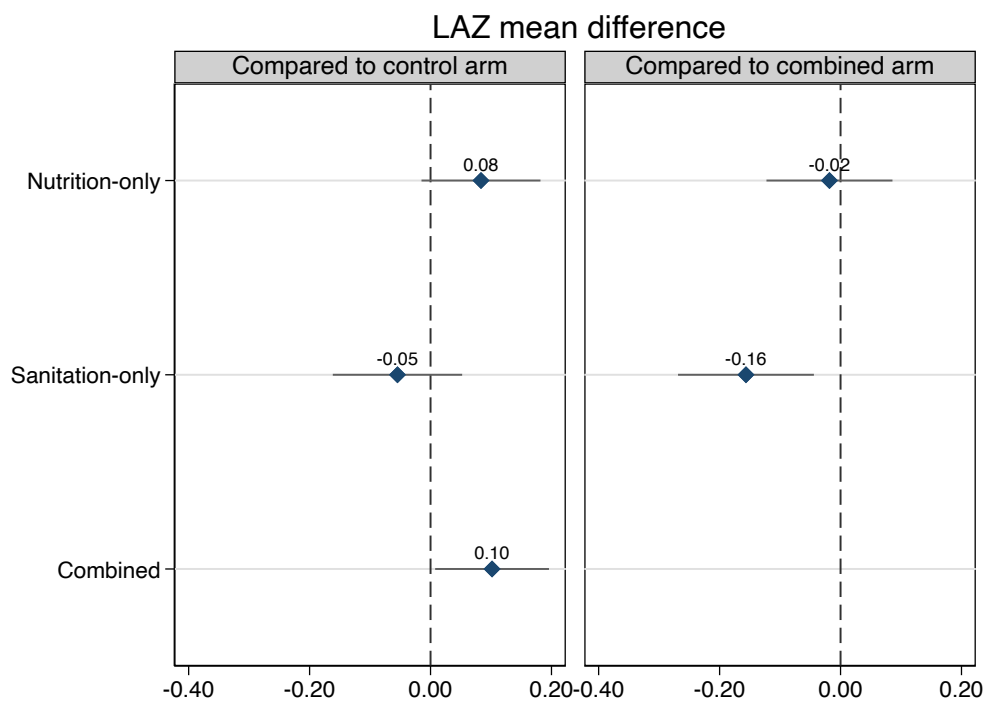


Figure 2: Unadjusted intervention effects on LAZ. Data are mean differences (point) with 95% CIs (line)

Table 6: Effects of intervention on child health outcomes

				Compared to control arm		Compared to combined-intervention arm	
	N	Mean	SD	PR (95% CI)	aPR (95% CI)	PR (95% CI)	aPR (95% CI)
Stunted							
Nutrition-only	801	0.15	0.36	0.84 (0.69, 1.03)	0.83 (0.68, 1.02)	0.93 (0.74, 1.15)	0.90 (0.72, 1.12)
Sanitation-only	782	0.21	0.40	1.12 (0.94, 1.33)	1.11 (0.94, 1.31)	1.23 (1.02, 1.49)	1.20 (0.99, 1.46)
Combined	1046	0.17	0.37	0.91 (0.76, 1.09)	0.92 (0.77, 1.10)	--	--
Control	1449	0.18	0.39	--	--	--	--
Wasted							
Nutrition-only	815	0.07	0.26	0.87 (0.65, 1.17)	0.85 (0.63, 1.14)	1.12 (0.80, 1.57)	1.09 (0.78, 1.52)
Sanitation-only	790	0.07	0.26	0.84 (0.62, 1.14)	0.83 (0.61, 1.13)	1.08 (0.76, 1.53)	1.06 (0.75, 1.51)
Combined	1052	0.07	0.25	0.78 (0.58, 1.04)	0.78 (0.58, 1.05)	--	--
Control	1457	0.08	0.28	--	--	--	--
Underweight							
Nutrition-only	816	0.15	0.35	0.85 (0.71, 1.03)	0.84 (0.69, 1.02)	1.04 (0.84, 1.29)	0.99 (0.80, 1.24)
Sanitation-only	792	0.17	0.38	1.00 (0.85, 1.19)	1.00 (0.85, 1.17)	1.22 (1.00, 1.49)	1.18 (0.97, 1.44)
Combined	1053	0.14	0.35	0.82 (0.68, 0.99)	0.84 (0.70, 1.01)	--	--
Control	1457	0.17	0.38	--	--	--	--
Diarrhea (7-day recall)							
Nutrition-only	788	0.19	0.39	0.89 (0.74, 1.06)	0.90 (0.76, 1.08)	0.95 (0.78, 1.14)	0.96 (0.80, 1.16)
Sanitation-only	752	0.21	0.41	0.99 (0.84, 1.17)	0.98 (0.83, 1.16)	1.05 (0.88, 1.25)	1.05 (0.87, 1.25)
Combined	1018	0.20	0.40	0.94 (0.80, 1.11)	0.94 (0.79, 1.11)	--	--
Control	1411	0.21	0.41	--	--	--	--
All-cause mortality							
Nutrition-only	1574	0.03	0.16	1.55 (0.71, 3.39)	--	1.61 (0.68, 3.82)	--
Sanitation-only	1636	0.03	0.16	1.09 (0.50, 2.40)	--	1.13 (0.48, 2.68)	--
Combined	1932	0.03	0.16	0.96 (0.44, 2.10)	--	--	--
Control	2688	0.03	0.16	--	--	--	--
Covariates in adjusted analyses include: child sex, child age, maternal age, maternal education, number of household members, household wealth index quintile, and community-level OD measured prior to intervention delivery							

Discussion

There was no evidence for an effect of the sanitation intervention on linear growth in young children (<28 months) 28 months after the intervention. There were measured gains in child linear growth in the arms receiving nutrition programming, both delivered independently and in combination with sanitation programming. We found a marginal effect in growth from the nutrition-only programming and a clear effect from the combined programming that was likely attributable to the nutrition programming. The lack of a clear difference in linear growth between

the nutrition-only arm and the combined intervention arm is also consistent with a conclusion that observed linear growth gains were largely attributable to the nutrition programming, further suggesting that the addition of this sanitation programming to nutrition programming did not produce synergistic effects. Intermediate outcomes of meal frequency and dietary diversity did not appear to differ between arms, so effects may be attributable to other elements of the nutrition or combined programming not captured by these measures.

Our findings from this effectiveness trial are consistent with results from several recent randomized factorial WASH and nutrition efficacy trials reporting protective effects of combined/integrated interventions and null effects of WASH on child growth outcomes^{6,7,21}. A small number of experimental trials^{42,43} and a larger number of observational studies^{18–20,25,28,29,44,45} have reported increases in child growth and reductions in stunting prevalence with improvements in sanitation coverage and commensurate reductions in OD; among the latter, unmeasured confounding is a likely explanation for observed effects. Unlike clinical randomized controlled trials where populations can be reasonably assumed to hold constant over time and setting, these assumptions often do not hold true for community-based trials where unmeasured factors may inhibit effects and/or may diminish the ability to measure effects of the intervention⁴⁶.

There were differences in frequency and intensity of contact from program promoters across intervention arms, possibly resulting in reduced impact of relatively light-touch sanitation programming. Arms receiving nutrition intervention participated in monthly activities, whereas arms receiving sanitation intervention participated in one triggering session with a few follow-up visits. The lower frequency in contact may explain the discrepancy in intervention compliance rates, with those in the sanitation-only arm reporting CLTS participation rates no different from the control arm (6% and 6%), compared with self-reported CLTS participation in the nutrition and combined arms (14% and 25%; Table 4). The high self-reported CLTS participation in the nutrition-only arm compared to the control arm may reflect biases embedded in the self-reporting process, especially when considering how long ago the CLTS interventions took place (28+ months ago) and how infrequently CLTS contact occurred relative to nutrition programming. Households that already had access to sanitation may not have engaged with the CLTS programming, the survey respondent may not have been aware of or may not recall specific activities, or other reporting biases could have played a role. The greater frequency and intensity of contact between the interventions and the respondents in the nutrition arms may have resulted in greater apparent recall of programming of any kind in this arm, exposing the possibility of reporting and observer biases. Participants were not masked to interventions due to the nature of the intervention. We included observable indicators in addition to self-reported measures as indicators of intervention compliance, which included direct observations of sanitation facilities and domestic hygiene status (e.g., feces in the play environment of children).

It is possible that this trial's sanitation intervention did not adequately address transmission routes for enteric pathogens. For example, only 22% of households in our survey were observed to have a child play environment free of animals with little difference between treatment and control arms; this is a transmission pathway that our trial and many other WASH trials have not addressed⁴⁷. The trial design is predicated on the theory that gains in sanitation coverage may lead to improved growth outcomes in children via reductions in the transmission of enteric

infection and disease, though links between sanitation coverage and specific outcomes are poorly understood in high-burden settings. The identification of threshold effects – i.e., that meeting a certain level of sanitation coverage or OD can lead to transformative change and reduction in community-level exposures to enteric pathogens remains unknown.

Sanitation gains attributable to the sanitation intervention were modest when comparing sanitation coverage from our endline survey with the pre-intervention survey in the same communes in 2016 (Supplemental Information). This study found community-level OD estimates of 32% (IQR 59%) in the control arm and 41% (IQR 61%) in the sanitation-only arm, compared to our post-intervention survey which found community-level OD of 13% (IQR 29%) in the control arm and 16% (IQR 32%) in the sanitation-only arm, highlighting the strong secular trend of sanitation coverage in Cambodia. An ancillary analysis of impacts of community-level sanitation gains on child linear growth will be performed in the near future. This trend in Cambodia has been documented in other studies: the percentage of all children younger than five years of age with access to an improved sanitation facility, from nationally representative DHS survey data, was 5% in 2000, 17% in 2005, 29% in 2010, and 54% in the most recent DHS survey from 2014^{18,39}. Corresponding increases in rural areas specifically have also been rapid. From 2010 to 2014, access to any sanitation facility increased from 30% to 44% and improved sanitation coverage increased from 27% to 43%^{18,39}. The pace of development in WASH generally in rural Cambodia means that measuring the impact of specific programs can be challenging. Because of the lack of clear sanitation coverage increases in the study arms receiving the sanitation intervention compared with the nutrition and control arms, this trial is limited in determining the effects of such changes on outcomes.

This trial was also limited in its capacity to measure intervention impacts due to the use of a single cross-sectional survey to retrospectively assess interventions delivered over the previous 28 months. This study included children born from 28 months before up to one month before the final measurement, with the primary outcome variable of age-adjusted linear growth on a continuous scale. As a result, children differed in the amount of time spent exposed to the intervention (including time spent *in utero*²), the age at which they are measured, and “maturity” of the interventions to which they are exposed. Extending the study timeline was not possible, though subsequent follow-up to assess longer-term impacts would be valuable. Additionally, this trial was not designed to detect effects that may not be realized until later on in a child’s life, so we are unable to capture possible catch-up growth patterns, potential reversal of child growth faltering by rapid linear growth⁴⁸ over 24 months of age. So, while a focus on the first 1,000 days is justified², investigation of growth and growth-promoting factors after this window may provide insight on improved WASH practices.

There are a few key observations from this trial that should be considered in future effectiveness trials of comparable scale. Increased frequency, duration, and intensity of intervention programming could have resulted in greater uptake of sanitation in target communes. Additionally, investments in sanitation programs may be most valuable in settings where there is not already a strong secular trend in expanding sanitation coverage and where open defecation is common; despite the sanitation gains observed in the sanitation-only arm, much of which may have been as a result of the sanitation programming, we were unable to attribute beneficial effects of the sanitation programming due to the high sanitation gains also observed in the

control arm. Finally, we need to define and implement WASH interventions that focus on the overall goal of reducing contact with all feces, including animal feces, and may require more holistic strategies to lower exposures in high-burden settings^{42,46}. This may also include the addition of objective supplemental outcome measures or intermediate measures of environmental contamination and disease etiology. Nutrition programming (as delivered in this trial) was effective in promoting linear growth in children. We found no evidence that this sanitation programming delivered in this context provides synergistic effects on growth outcomes, though our observations are limited to settings with increases in sanitation greater than the increases observed in the control arm where coverage estimates were increased from 68% (pre-intervention) to 87% (post-intervention).

Other Information

Trial Registry

The trial is registered with ISRCTN Registry ([ISRCTN77820875](https://www.isrctn.com/ISRCTN77820875)).

Protocol

The National Ethics Committee for Health Research in the Cambodian Ministry of Health reviewed and approved the protocols (NECHR #110) prior to the start of data collection. The study also received approvals from the Institutional Review Board at Georgia Institute of Technology (Ref: H19286) and from New England IRB (IRB#: 120190186).

Funding

This study was funded by the United States Agency for International Development (USAID). The contents of this manuscript do not necessarily reflect the views of USAID. The contents of this publication are the sole responsibility of the authors and do not necessarily reflect the views of USAID or the United States Government.

References

1. Prendergast, A. J. & Humphrey, J. H. The stunting syndrome in developing countries. *Paediatrics and international child health* **34**, 250–265 (2014).
2. Victora, C. G. *et al.* Maternal and child undernutrition: consequences for adult health and human capital. *The Lancet* **371**, 340–357 (2008).
3. de Onis, M. & Blössner, M. The World Health Organization Global Database on Child Growth and Malnutrition: methodology and applications. *International Journal of Epidemiology* **32**, 518–526 (2003).
4. Black, R. E. *et al.* Maternal and child undernutrition: global and regional exposures and health consequences. *The Lancet* **371**, 243–260 (2008).
5. Dewey, K. G. & Adu-Afarwuah, S. Systematic review of the efficacy and effectiveness of complementary feeding interventions in developing countries. *Maternal & child nutrition* **4 Suppl 1**, 24–85 (2008).
6. Luby, S. P. *et al.* Effects of water quality, sanitation, handwashing, and nutritional interventions on diarrhoea and child growth in rural Bangladesh: a cluster randomised controlled trial. *The Lancet Global Health* **6**, e302–e315 (2018).
7. Null, C. *et al.* Effects of water quality, sanitation, handwashing, and nutritional interventions on diarrhoea and child growth in rural Kenya: a cluster-randomised controlled trial. *The Lancet Global Health* **6**, e316–e329 (2018).
8. Ruel, M. T. & Alderman, H. Nutrition-sensitive interventions and programmes: how can they help to accelerate progress in improving maternal and child nutrition? *Lancet (London, England)* **382**, 536–551 (2013).
9. Dangour, A. D. *et al.* Interventions to improve water quality and supply, sanitation and hygiene practices, and their effects on the nutritional status of children. *Cochrane Database of Systematic Reviews* CD009382 (2013)
doi:10.1002/14651858.CD009382.pub2.
10. Cumming, O. & Cairncross, S. Can water, sanitation and hygiene help eliminate stunting? Current evidence and policy implications. *Maternal & Child Nutrition* **12**, 91–105 (2016).
11. Prüss-Ustün, A. *et al.* Burden of disease from inadequate water, sanitation and hygiene for selected adverse health outcomes: An updated analysis with a focus on low- and middle-income countries. *International Journal of Hygiene and Environmental Health* **222**, 765–777 (2019).
12. Guerrant, R. L., Schorling, J. B., McAuliffe, J. F. & de Souza, M. A. Diarrhea as a cause and an effect of malnutrition: diarrhea prevents catch-up growth and malnutrition increases diarrhea frequency and duration. *The American journal of tropical medicine and hygiene* **47**, 28–35 (1992).
13. Checkley, W. *et al.* Multi-country analysis of the effects of diarrhoea on childhood stunting. *International journal of epidemiology* **37**, 816–830 (2008).
14. Papier, K. *et al.* Childhood Malnutrition and Parasitic Helminth Interactions. *Clinical Infectious Diseases* **59**, 234–243 (2014).
15. Haghighi, P., Wolf, P. L. & Durie, P. Tropical Sprue and Subclinical Enteropathy: A Vision for the Nineties. *Critical Reviews in Clinical Laboratory Sciences* **34**, 313–341 (1997).

16. Humphrey, J. H. Child undernutrition, tropical enteropathy, toilets, and handwashing. *Lancet (London, England)* **374**, 1032–1035 (2009).
17. Budge, S., Parker, A. H., Hutchings, P. T. & Garbutt, C. Environmental enteric dysfunction and child stunting. *Nutrition reviews* **77**, 240–253 (2019).
18. Ikeda, N., Irie, Y. & Shibuya, K. Determinants of reduced child stunting in Cambodia: analysis of pooled data from three demographic and health surveys. *Bulletin of the World Health Organization* **91**, 341–349 (2013).
19. Rah, J. H., Sukotjo, S., Badgaiyan, N., Cronin, A. A. & Torlesse, H. Improved sanitation is associated with reduced child stunting amongst Indonesian children under 3 years of age. *Maternal & Child Nutrition* **16**, e12741 (2020).
20. Spears, D. How Much International Variation in Child Height Can Sanitation Explain? *World Bank Policy Research Working Paper No. 6351* (2013).
21. Humphrey, J. H. *et al.* Independent and combined effects of improved water, sanitation, and hygiene, and improved complementary feeding, on child stunting and anaemia in rural Zimbabwe: a cluster-randomised trial. *The Lancet Global Health* **7**, e132–e147 (2019).
22. Kar, K. Practical guide to triggering community-led total sanitation (CLTS). (2005).
23. Venkataramanan, V., Crocker, J., Karon, A. & Bartram, J. Community-Led Total Sanitation: A Mixed-Methods Systematic Review of Evidence and Its Quality. *Environmental Health Perspectives* **126**, 026001 (2018).
24. Kar, K. & Chambers, R. Handbook on community-led total sanitation. (2008).
25. Vyas, S., Kov, P., Smets, S. & Spears, D. Disease externalities and net nutrition: Evidence from changes in sanitation and child height in Cambodia, 2005–2010. *Economics & Human Biology* **23**, 235–245 (2016).
26. Spears, D. Exposure to open defecation can account for the Indian enigma of child height. *Journal of Development Economics* **146**, 102277 (2020).
27. Harris, M., Alzua, M. L., Osbert, N. & Pickering, A. Community-Level Sanitation Coverage More Strongly Associated with Child Growth and Household Drinking Water Quality than Access to a Private Toilet in Rural Mali. *Environmental science & technology* **51**, 7219–7227 (2017).
28. Larsen, D. A., Grisham, T., Slawsky, E. & Narine, L. An individual-level meta-analysis assessing the impact of community-level sanitation access on child stunting, anemia, and diarrhea: Evidence from DHS and MICS surveys. *PLOS Neglected Tropical Diseases* **11**, e0005591 (2017).
29. Fink, G., Günther, I. & Hill, K. The effect of water and sanitation on child health: evidence from the demographic and health surveys 1986–2007. *International Journal of Epidemiology* **40**, 1196–1204 (2011).
30. Pickering, A. J., Djebbari, H., Lopez, C., Coulibaly, M. & Alzua, M. L. Effect of a community-led sanitation intervention on child diarrhoea and child growth in rural Mali: A cluster-randomised controlled trial. *The Lancet Global Health* **3**, e701–e711 (2015).
31. Briceño, B., Coville, A., Gertler, P. & Martinez, S. Are there synergies from combining hygiene and sanitation promotion campaigns: Evidence from a large-scale cluster-randomized trial in rural Tanzania. *PloS one* **12**, e0186228–e0186228 (2017).
32. Cameron, L., Olivia, S. & Shah, M. Scaling up sanitation: Evidence from an RCT in Indonesia. *Journal of Development Economics* **138**, 1–16 (2019).

33. Clasen, T. *et al.* Effectiveness of a rural sanitation programme on diarrhoea, soil-transmitted helminth infection, and child malnutrition in Odisha, India: a cluster-randomised trial. *The Lancet Global Health* **2**, e645–e653 (2014).
34. Patil, S. R. *et al.* The Effect of India's Total Sanitation Campaign on Defecation Behaviors and Child Health in Rural Madhya Pradesh: A Cluster Randomized Controlled Trial. *PLOS Medicine* **11**, e1001709 (2014).
35. Marschner, I. C. Optimal design of clinical trials comparing several treatments with a control. *Pharmaceutical Statistics* **6**, 23–33 (2007).
36. Cogill, B. *Anthropometric Indicators Measurement Guide*. (2001).
37. Rustein, S. O. *Steps to constructing the new DHS wealth index*. (2015).
38. World Health Organization. Indicators for assessing infant and young child feeding practices. Part I: Definitions. (2008).
39. National Institute of Statistics, Directorate General for Health, and I. I. *Cambodia Demographic and Health Survey 2014*.
40. VanderWeele, T. J. Principles of confounder selection. *European Journal of Epidemiology* **34**, 211–219 (2019).
41. Rheingans, R., Anderson, J. D., Luyendijk, R. & Cumming, O. Measuring disparities in sanitation access: does the measure matter? *Tropical Medicine & International Health* **19**, 2–13 (2014).
42. Pickering, A. J. *et al.* The WASH Benefits and SHINE trials: interpretation of WASH intervention effects on linear growth and diarrhoea. *The Lancet Global Health* **7**, e1139–e1146 (2019).
43. Hammer, J. & Spears, D. Village sanitation and child health: Effects and external validity in a randomized field experiment in rural India. *Journal of Health Economics* **48**, 135–148 (2016).
44. Checkley, W. *et al.* Effect of water and sanitation on childhood health in a poor Peruvian peri-urban community. *The Lancet* **363**, 112–118 (2004).
45. Barnard, S. *et al.* Impact of Indian Total Sanitation Campaign on Latrine Coverage and Use: A Cross-Sectional Study in Orissa Three Years following Programme Implementation. *PLOS ONE* **8**, e71438 (2013).
46. Cumming, O. *et al.* The implications of three major new trials for the effect of water, sanitation and hygiene on childhood diarrhea and stunting: a consensus statement. *BMC Medicine* **17**, 173 (2019).
47. Prendergast, A. J. *et al.* Putting the 'A' into WaSH: a call for integrated management of water, animals, sanitation, and hygiene. *The Lancet Planetary Health* **3**, e336–e337 (2019).
48. Leroy, J. L., Ruel, M., Habicht, J.-P. & Frongillo, E. A. Using height-for-age differences (HAD) instead of height-for-age z-scores (HAZ) for the meaningful measurement of population-level catch-up in linear growth in children less than 5 years of age. *BMC Pediatrics* **15**, 145 (2015).