

1 **Anti-Sars-Cov-2 IgA And IgG In Human Milk After Vaccination Is Dependent On**
2 **Vaccine Type And Previous Sars-Cov-2 Exposure: A Longitudinal Study.**

3

4 Marta Selma-Royo (PhD)¹, Christine Bäuerl (PhD)¹, Desirée Mena-Tudela (PhD)², Laia
5 Aguilar-Camprubí (MsC)³, Francisco J Pérez-Cano (PhD)⁴, Anna Parra-Llorca (MD,
6 PhD)⁵, Carles Lerin (PhD)⁶, Cecilia Martínez-Costa (MD, PhD)^{7a}, Maria Carmen Collado
7 (PhD)^{1a*} on behalf of MilkCORONA study team

8

9 ¹Department of Biotechnology, Institute of Agrochemistry and Food Technology-
10 National Research Council (IATA-CSIC), Paterna, Valencia, Spain.

11 ² Department of Nursing, Nursing Research Group, Universitat Jaume I, Castellón, Spain

12 ³ LactApp Women Health, Barcelona, Spain.

13 ⁴Physiology Section, Department of Biochemistry and Physiology, Faculty of Pharmacy
14 and Food Science and Institute of Research in Nutrition and Food Safety (INSA),
15 University of Barcelona (UB), Barcelona, Spain.

16 ⁵Health Research Institute La Fe, Neonatal Research Group, Spain and University and
17 Polytechnic Hospital La Fe, Division of Neonatology, Valencia, Spain.

18 ⁶Institut de Recerca Sant Joan de Déu, Hospital Sant Joan de Déu, Barcelona, Spain.

19 ⁷Department of Pediatrics, Hospital Clínico Universitario, University of Valencia, Spain.
20 Nutrition Research Group of INCLIVA, Valencia, Spain.

21 ^a senior authorship

22

23 *Correspondence to: MCC (mcolam@iata.csic.es), Institute of Agrochemistry and Food
24 Technology, Spanish National Research Council (IATA-CSIC), Department of
25 Biotechnology. Av. Agustín Escardino 7, 46980 Valencia, Spain. Phone: +34 963900022

26

27

28

29 **NOTE: This preprint reports new research that has not been certified by peer review and should not be used to guide clinical practice.**

1 **Key Points**

2 **Question:** What is the effect of the different COVID-19 vaccines on the anti-SARS-CoV-
3 2 antibodies in breast milk? Is the vaccine-specific antibody response in milk comparable
4 to a natural infection? What would be the effect of vaccination on human milk antibodies
5 in women with past SARS-CoV-2 infection?

6

7 **Findings:** In this prospective, observational and multicenter study in Spain, lactating
8 women within the priority groups receiving the vaccination against SARS-CoV-2 were
9 included. Although there is a high intra- and inter-variability in the generation of specific
10 SARS-CoV-2 antibodies in breast milk, they are also dependent on the vaccine-type and
11 previous viral exposure.

12

13 **Meaning:** Maternal SARS-CoV-2 vaccination provides anti-SARS-CoV-2 antibodies,
14 both IgA and IgG, in human milk and it depends on vaccines and previous COVID-19.

15

16

17

18

19

20

21

22

23

24

25

1 **Structured Abstract**

2 **Importance:** Limited data are available on COVID-19 vaccine impact in lactating women.

3 **Objective:** To evaluate the impact of different COVID-19 vaccines on specific anti-
4 SARS-CoV-2 IgA and IgG levels in human milk.

5 **Design, Settings and Participants:** In this prospective observational study in Spain, 75
6 lactating women from priority groups receiving vaccination against SARS-CoV-2 were
7 included (January to April 2021). Human milk samples were collected at seven-time
8 points. A group with confirmed SARS-CoV-2 infection (n=19) and a group of women
9 from pre-pandemic time (n=13) were included.

10 **Exposure:** mRNA vaccines (BNT162b2 and mRNA-1273) and adenovirus-vectored
11 vaccine (ChAdOx1 nCoV-19).

12 **Main Outcome(s) and Measure(s):** Presence of IgA and IgG against RBD SARS-CoV-2
13 in breast milk.

14 **Results:** Seventy-five vaccinated lactating women [mean age, 34.9 ± 3.7 years] of
15 whom 96% were Caucasian and 92% were health care workers. A total of 417 milk
16 samples were included and vaccine distribution was BioNTech/Pfizer (BNT162b2,
17 n=30), Moderna (mRNA-1273, n=21), and AstraZeneca (ChAdOx1 nCoV-19, n=24). For
18 each vaccine, 7 time points were collected from baseline up to 25 days after the 1st dose
19 and same points were collected for mRNA vaccines 30 days after 2nd dose. A strong
20 reactivity was observed for IgG and IgA after vaccination mainly after the 2nd dose.
21 Presence and the persistence of specific SARS-CoV-2 antibodies in breast milk were
22 dependent on the vaccine-type and, on previous virus exposure. High inter-variability was
23 observed, being relevant for IgA antibodies. IgG levels were significantly higher than
24 those observed in milk from COVID-19 women while IgA levels were lower. Women

1 with previous COVID-19 increased the IgG levels after the 1st dose to a similar level
2 observed in vaccinated women after the 2nd dose.

3 Conclusions and Relevance: Breast milk from vaccinated women contains anti-SARS-
4 CoV-2 IgA and IgG, with highest after the 2nd dose. Levels were dependent on vaccine
5 type and previous exposure to SARS-CoV-2. Previous COVID-19 influenced the vaccine
6 effect after a single dose, which could be especially relevant in the design of vaccination
7 protocols. Further studies are warranted to demonstrate the potential protective role of
8 these antibodies against COVID-19 in infants from vaccinated and infected mothers
9 through breastfeeding.

10

11 Trial Registration: NCT04751734

12

13 **Keywords:** breast milk, SARS-CoV-2, antibodies, immunoglobulins, vaccines

14

1 **Introduction**

2 Breastfeeding is the most important postnatal link between mothers and infants, being the
3 best source of nutrition with effects for infant health and development¹ including the
4 maturation of the neonatal immune system, which is especially relevant in the context of
5 Coronavirus Disease 2019 (COVID-19) vaccination. Similarly to other infective
6 processes² some studies have reported the presence of specific antibodies in milk after
7 SARS-CoV-2 infection. In particular, a rapid and strong antibody response is induced
8 after maternal SARS-CoV-2 infection, with the subsequent accumulation of substantial
9 amounts of specific neutralizing secretory IgA (sIgA) and other antibody types in breast
10 milk³⁻⁵.

11 Europe initiated the vaccination program against COVID-19 on December 27th, 2020. In
12 Spain, health care workers were priority groups to receive the vaccines, including
13 breastfeeding women. First available vaccines were mRNA-based vaccines BNT162b2
14 mRNA and mRNA-1273; later on, an adenovirus-vectored vaccine (ChAdOx1 nCoV-19)
15 became available. While these vaccines protect against severe COVID-19 disease in adult
16 populations⁶⁻⁸, limited data are available on lactating women as they were not included
17 in vaccine trials¹. Despite this lack of information, main organizations including the
18 Centers for Disease Control and Prevention have recommended lactating women to be
19 immunized^{9,10}. Preliminary studies showed that mRNA-based vaccines induced anti-
20 SARS-CoV-2 antibodies in breast milk¹⁰⁻¹². However, several questions remain still open
21 including the extend of the vaccination effect, whether there is a differential response
22 depending on the vaccine type, and the impact of vaccination on women with past SARS-
23 CoV-2 infection.

24 We investigated whether maternal immunization with the available vaccines resulted in
25 secretion of antibodies directed against SARS-CoV-2 into breast milk and evaluated any

1 potential adverse events among women and their infants. Furthermore, we compared milk
2 antibody levels from vaccinated women to those found in naturally immunized women.

3

4 **Methods**

5 **Study population and design**

6 This is a prospective observational, longitudinal, and multicenter study in lactating
7 women receiving vaccination against SARS-CoV-2 infection in Spain (ClinicalTrials.gov
8 Identifier: NCT04751734). Recruitment period started in January 2021 and it is still
9 ongoing. Participants were breastfeeding women within the vaccination priority groups
10 (frontline health care workers) established by the Spanish Government. Participants were
11 recruited at hospitals and health care centers as well as by using specific tools as
12 LactApp¹³ and social media. Women were excluded if cessation of breastfeeding and/or
13 vaccine side-effects required specific treatment and/or hospitalization. Participants
14 received information and written consent was obtained before enrollment. All procedures
15 were in accordance with the ethical standards approved by the Ethical Committee of the
16 Hospital Clínico Universitario (Ref. 2020/133), the Institut de Recerca Sant Joan de Déu
17 (Ref. PIC-94-21), and CSIC (Ref. 061/2021).

18 Participants received either two doses of mRNA vaccines (BNT162b2 mRNA,
19 BioNTech/Pfizer and mRNA-1273, Moderna) or just one dose of adenovirus-vectored
20 vaccine (ChAdOx1 nCoV-19, Oxford/AstraZeneca). Human milk samples were collected
21 longitudinally at seven-time points: pre-vaccination (1-T0: 0 weeks, 1 week (1-T1), 2
22 weeks (1-T2) and 3 weeks (1-T3) post the 1st dose of vaccine; and 1 week (2-T1), 2 weeks
23 (2-T2) and 3-4 weeks (2-T3) post 2nd dose for mRNA vaccines. For the adenovirus-
24 vectored vaccine, samples of the 1st vaccine dose follow-up were collected. The
25 vaccination time of the 2nd dose of this last vaccine is still uncertain due to side effects

1 issues, it is being evaluated for other target-population groups and is not provided
2 systematically to all people vaccinated with a first dose.

3 Furthermore, a group with confirmed SARS-CoV-2 infection (n=19) (ClinicalTrials.gov
4 Identifier: NCT04768244) from a previous study¹⁴ and a control group of women not
5 exposed to SARS-CoV-2 from prepandemic time¹⁵ (n=13) (ClinicalTrials.gov Identifier:
6 NCT03552939) were included.

7

8 **Human milk collection and processing**

9 Breast milk collection was performed by each women at home following the
10 recommended procedures¹⁶. Then, milk was collected mainly by use of a sterile pumper
11 in sterile bottles to normalize the collection among participants and morning collection
12 was recommendable. Breast milk samples were stored immediately at -20 °C and later
13 stored at -80 °C as detailed elsewhere¹⁴. In brief, samples were thawed and centrifuged,
14 the whey milk was aliquoted and frozen at -80 °C until use. COVID19 positive and
15 prepandemic milk samples were processed in same manner.

16

17 **Detection of specific SARS-CoV-2- antibodies in breast milk**

18 Antibodies against the receptor-binding domain (RBD) SARS-CoV-2 S protein were
19 determined as previously described¹⁴. 1:4 diluted samples were incubated for 2 h in 1 %
20 (w/v) milk powder and SARS-Cov-2 antibodies were detected using anti-human IgA (α -
21 chain-specific) HRP antibody (Thermo-Fisher Scientific; A18781; 1:6.000) and anti-
22 human IgG (Fc specific) HRP antibody (Sigma-Aldrich; A0170; 1:4.000). Standards for
23 interpolation of arbitrary units (AU) were created by pooling 10 breast milk samples with
24 high OD values based on preliminary data. 10 samples from the final collection time (2-
25 T3) of vaccinated mothers and COVID-19 positive mothers were selected for IgG and

1 IgA, respectively. An arbitrary antibody concentration unit of 3000 was assigned to the
2 highest OD value corresponding to the undiluted sample. The standard curve corresponds
3 to eight 3-fold serial dilution from 3000 to 1.38 arbitrary units. In the case of IgG levels,
4 an additional standard curve using a monoclonal anti-SARS-CoV-2 IgG (Clone CR3022
5 produced in *Nicotiana benthamiana*, BEI Resources, NR-53876) was obtained to assess
6 the equivalence between the arbitrary units and IgG quantification (**eFigure 1**).

7

8 **Statistical analysis**

9 GraphPad Prism 8.4.3 was used for the statistical analysis. Antibody kinetics were fitted
10 using a nonlinear 4-parameter least-square fit in GraphPad Prism 8.4.3. The resulted fit
11 was used to model the tested samples calculating the arbitrary units of each sample. The
12 maximum (3000 AU) or lowest (1.37 AU) values were assigned to those samples that
13 could not be modeled because of they were out of range in the OD values in the upper
14 or the bottom part of the standard curve, respectively. To compare differences in AU, data
15 were log transformed. Mixed-effects analyses to accommodate missing values were
16 performed to model longitudinal trends of anti-SARS-CoV-2 IgG and IgA. Extended
17 description of the statistical methods is in Supplementary data.

18

19 **Results**

20 **Study population characteristics**

21 The study included seventy-five lactating women receiving COVID-19 vaccination
22 (**Table 1**), with age of 34.9 ± 3.9 years (mean \pm SD) and infant age of 13.4 ± 7.3 months
23 (mean \pm SD). No significant differences were observed for the vaccine-type groups in
24 clinical variables (**Table 1**). Mothers vaccinated with the adenoviral-vectored vaccine
25 reported more side effects after vaccination compared to those reported with the mRNA-

1 based vaccines including fever ($p=0.0005$) and headache ($p<0.0001$) (**eTable 1**). Four
2 infants developed fever after maternal vaccination. There were no serious adverse events
3 during the study period.

4

5 **Anti-SARS-CoV-2 reactive antibodies in breast milk after vaccination**

6 A strong reactivity was observed for IgG and IgA after vaccination mainly after the 2nd
7 dose (**Figure 1**). Both IgG (**Figure 1A**) and IgA (**Figure 1B**) reached higher levels than
8 those in the prepandemic group and those in baseline time-point. Mixed-effects analysis
9 also revealed that vaccination increased IgG ($p<0.0001$) and IgA ($p<0.0001$) levels in
10 milk samples (**eTable S2**). While no differences were observed at baseline compared to
11 prepandemic samples, 8 participants who reported SARS-CoV-2 infection prior to
12 vaccination showed higher antibody levels compared to the baseline levels. Four other
13 participants showed the same antibody profile but without confirmation of previous
14 infection. These 4 participants were not included in further analyses.

15 IgG levels after the 2nd dose of the mRNA-based vaccines reached higher levels than
16 those observed in the SARS-CoV-2 group ($p<0.0001$) (**Figure 1A**), suggesting a strong
17 response to the vaccines to generate IgG antibodies. Regarding IgA, low levels of non-
18 specific binding were observed in both prepandemic and baseline milk samples (**Figure**
19 **1B**). While anti-SARS-CoV-2 IgA levels significantly increased following the 1st and the
20 2nd dose ($p<0.0001$ and $p<0.0001$, respectively), they stayed lower than those found in
21 the SARS-CoV-2 group ($p<0.0001$).

22

23 **Anti-SARS-CoV-2 antibody levels in milk according to vaccine type**

24 We next compared the immunogenic response for each vaccine type. While all three
25 vaccines increased anti-SARS-CoV-2 IgG (**Figure 2A**) and IgA levels (**Figure 2B**),

1 BioNtech/Pfizer and Moderna induced higher IgG levels than Oxford/AstraZeneca after
2 administration of the 1st dose. mRNA-based vaccines induced their maximum effect 2
3 weeks after 2nd dose (**Figure 2A and 2B, e Figure 2**). Furthermore, a higher percentage
4 of samples from Moderna and BioNtech/Pfizer remained positive based on the established
5 cut-off compared to Oxford/AstraZeneca 2 weeks after the 1st dose, ($p<0.0001$) (**eTable**
6 **3**). No major differences were found between the two mRNA-based vaccines, and all
7 samples were classified as positive after the 2nd dose (**eTable 3**).

8 Mixed-effects analysis for the 1st dose period revealed an effect of vaccine-type on both
9 IgG and IgA levels ($p<0.0001$), with higher immunoglobulin levels achieved after
10 vaccination with mRNA-based Moderna and BionTech/Pfizer compared to adenoviral-
11 vectored Oxford/AstraZeneca vaccines at 2- and 3-weeks post 1st dose (**eTable 4**).

12 We then calculated the increase in IgG and IgA levels from baseline to 2 weeks after 1st
13 dose (for the three vaccines) and 2 weeks after 2nd dose (for mRNA-based vaccines)
14 (**Figure 2C and 2D**). After the 1st dose, Moderna and BioNtech/Pfizer vaccinated
15 mothers showed higher increment of milk anti-SARS-CoV-2 IgG compared to
16 Oxford/AstraZeneca ($p<0.0001$), while anti-SARS-CoV-2 IgA levels were higher in
17 Moderna compared to Oxford/AstraZeneca ($p<0.0001$) and BioNtech/Pfizer ($p=0.002$)
18 groups. After the 2nd dose, no differences were observed between the two mRNA-based
19 vaccines (**Figures 2C and 2D**). Moreover, after the 2nd dose, IgG levels reached higher
20 levels compared to the 1st dose while IgA levels did not further increase.

21

22 **Effects of vaccination in mothers with previous SARS-CoV-2 infection.**

23 The subset of mothers with previous SARS-CoV-2 infection ($n=8$) showed higher IgG
24 and IgA levels at baseline when compared to the pre-pandemic group and participants
25 without infection (**Figure 3**). Baseline anti-SARS-CoV-2 IgG levels in milk were similar

1 than those observed in non-vaccinated and infected women (SARS-CoV-2) and higher
2 than prepandemic group. IgG levels increased after the 1st dose reaching values similar to
3 those observed after the 2nd dose in participants without previous exposure to SARS-CoV-
4 2 (**Figure 3A**). Baseline anti-SARS-CoV-2 IgA levels were lower compared to the
5 positive control group ($p < 0.0001$), reaching similar values after the 1st dose of the vaccine
6 (**Figure 3B**).

7

8 **Discussion**

9 This study reports presence of anti-SARS-CoV-2 IgA and IgG in breast milk after
10 vaccination, determined they were filling the gap on the knowledge about a potential
11 vaccine-dependent immunogenic response. This study represents the biggest study up to
12 now in Europe reporting specific antibody levels in milk for three different vaccines.

13 It has been reported that COVID-19 mRNA vaccination in pregnant and lactating women
14 generated a robust serum immune response¹⁰. However, limited data are available on the
15 impact of the different COVID-19 vaccines in breast milk. Breast milk acts as the main
16 route of passive immunity from mother to infant after birth, which could be especially
17 relevant in the pandemic context. Even though breast milk is considered the best nutrition
18 source for infant development during the first months of live, there were uncertain
19 guidelines for lactating women at the beginning of the pandemic. Presence of IgG and
20 other specific antibodies against SARS-CoV-2 including IgA have been well studied after
21 COVID-19 disease in serum and breast milk^{17,18}. However, information on their dynamics
22 after vaccination remains limited. While accumulating data are being provided for
23 mRNA-based vaccines^{12,19,20}, no information is available for the adenovirus-based
24 vaccine (AstraZeneca).

1 Our study shows increased levels of both anti-SARS-CoV-2 IgG and IgA levels after
2 vaccination. The immunogenic response showed high intra- and inter-individual
3 variability and was dependent on the vaccine type. Both IgA and IgG significantly
4 increased at 2-weeks after the 1st dose in all the analyzed vaccines and showed another
5 peak after the 2nd dose. While levels of anti-SARS-CoV-2 IgG were maintained at the
6 final time point of the follow-up, IgA levels decreased 3-4 weeks after the 2nd dose. These
7 results are in accordance with previous studies focused on the presence of SARS-CoV-2
8 antibodies in breast milk ^{11,20}. Indeed, we found that all samples remained positive for
9 anti-SARS-CoV-2 IgG at the end of the vaccination course, while only 50-60% of the
10 samples were classified as positive for IgA, which is in agreement with previously
11 reported data¹². Thus, our observations support vaccination as a useful clinical strategy to
12 affect anti-SARS-CoV-2 IgG levels also in breast milk with the potential protective effect
13 for the infant. Further studies with longer follow-up periods are needed for a deeper
14 description of vaccination effects on antibody detection in breast milk as well as for the
15 potential preventive effects in infants and to confirm the clinical relevance of the findings.
16 We observed a robust secretion of SARS-CoV-2 specific IgGs in breast milk after the 2nd
17 dose of vaccination, reaching higher levels than in naturally SARS-CoV-2 infected
18 women, suggesting a powerful effect of vaccination on SARS-CoV-2 IgG production. In
19 agreement with our data, a 2nd mRNA vaccine dose increased the levels of anti-SARS-
20 CoV-2 IgG but not IgA in both maternal blood and breast milk ¹⁰.
21 IgA secretion was evident as early as 2 weeks after vaccination followed by a peak after
22 4 weeks (a week after the 2nd vaccine). Afterwards, levels of specific IgA against RBD
23 gradually decrease during the 3-4 weeks post-vaccination. However, while anti-SARS-
24 CoV-2 IgG levels were higher than those found in the SARS-CoV-2 group, IgA was lower
25 compared to naturally infected women. Further studies with longer follow-up are needed

1 to track persistence of IgA specific antibodies. Indeed, we reported higher baseline signal
2 for anti-SARS-CoV-2 IgA than those found for IgG, which agrees with previous studies
3 ¹⁴. In this sense, a recent study reported higher S1 + S2-reactive IgA in breast milk from
4 women that had viral respiratory infection symptoms before the pandemic than in milk
5 from women without symptoms ²¹. These data would partially explain the potential signal
6 or cross-reactivity in breast milk samples before 2020 ²¹.

7 While different studies have reported presence of specific IgA antibodies against SARS-
8 CoV-2 in human milk after COVID-19 ^{3-5,17}, to our knowledge none of the previous
9 studies included the different vaccine-types in the same analysis. While we observed no
10 significant differences between the two mRNA-based vaccines, anti- SARS-CoV-2 IgA
11 and IgG levels in women receiving an adenoviral-vectored vaccine were lower compared
12 to mRNA-based vaccines at least after the 1st dose. However, these results need to be
13 carefully considered since our study included data from samples collected up to the 1st
14 dose of Oxford/AstraZeneca vaccine which could not provide a complete view of the
15 vaccination effect in terms of antibody detection in breast milk. Indeed, we could not
16 conclude the clinical relevance of this difference since it is well known that not only
17 antibody but also other immune components including antigen specific T-cells could be
18 activated by vaccines and play a role in the protection conferred by the adenoviral-
19 vectored vaccines ²². Nonetheless, our findings highlight that further studies with bigger
20 sample size and independent populations are needed in order to confirm our observations.

21 We also described the effect of vaccination in a small subset of mothers with a previous
22 SARS-CoV-2 infection. Even though the small sample size, these mothers showed a high
23 baseline IgG signal, similar to the positive control group and to that reported after the 1st
24 dose in mothers with no previous infection. Indeed, mothers with a previous SARS-CoV-
25 2 infection reached the peak of anti-SARS-CoV-2 IgG levels after the 1st dose, and these

1 were comparable to those reached in the general studied population after the 2nd dose of
2 the vaccination course. Our results suggest that mothers with previous infection could get
3 a similar potential protective effect in their milk after a unique dose of the vaccination
4 course. Recently, similar results in serum samples from health care workers have been
5 reported ²³, showing that specific IgG antibodies directed to different SARS-CoV-2
6 antigens (S1, S2, RBD, and N regions) persisted 3 weeks after a single vaccination²³.
7 Other studies, in agreement with our results, demonstrated that a single dose of mRNA-
8 based vaccines elicited rapid immune responses in seropositive participants with previous
9 history of SARS-CoV-2 exposure ^{24,25}. However, the persistence and duration of antibody
10 responses in both milk and blood need further investigation. Nonetheless, further studies
11 with larger sample size focused on mothers with an history of SARS-CoV-2 infection
12 could be crucial to confirm our results and to clarify the clinical relevance of these
13 findings as well as the potential consequence for the vaccination programs.

14

15 **Limitations**

16 Our study provides preliminary data, and it has limitations. Larger prospective studies,
17 bigger samples sizes and distinct cohorts in different locations are needed to confirm the
18 safety of SARS-CoV-2 vaccination in breastfeeding women and the possible differences
19 in the presence of antibodies in breast milk according to vaccine type. Our study does not
20 provide data after the 2nd dose of the adenoviral-vectored vaccine which would be
21 especially relevant in the comparison among the vaccine types. In addition, longer follow-
22 up of the antibody levels would be needed in order to determine their persistence.
23 Furthermore, although it has been suggested that antibodies found in breast milk would
24 exert strong neutralizing effects, no functional assays were performed. In addition, the

1 potential impact on neonatal growth as well as the potential protective effect against
2 infection in the infant remains elusive.

3

4 **Conclusions**

5 Breast milk from vaccinated women contains specific IgA and IgG against SARS-CoV-
6 2 RBD, with levels increasing considerably after a 2nd dose in the case of IgG. Women
7 with previous COVID-19 history increased antibody levels y after the 1st dose to the level
8 observed in vaccinated women with no previous infection after the 2nd dose. Further
9 studies are needed to demonstrate the protective antibody effect against COVID-19 in
10 infants from vaccinated and/or infected mothers and the differences in the vaccine-type.

11

12 **Acknowledgements**

13 We thank all the families who were involved in the study during this difficult time and in
14 the middle of the COVID-19 pandemic as well as the collaborators of the MilkCORONA
15 (detailed below), which includes neonatologists, pediatricians, midwives, nurses, research
16 scientists, and computer/laboratory technicians.

17

18 MilkCORONA Collaborators:

19 i) Erika Cortés-Macias (MsC) and Julian Beltrán (Technician) from Department of
20 Biotechnology, Institute of Agrochemistry and Food Technology- National Research
21 Council (IATA-CSIC), Valencia, Spain.

22 ii) Laura Martínez-Rodríguez (Pediatrician, MD, PhD), Javier Estañ-Capell (Pediatrician,
23 MD, PhD) from Pediatric Nutrition Research Group of INCLIVA Biomedical
24 Research Institute of Valencia and Department of Pediatrics, Hospital Clínico
25 Universitario, University of Valencia, Spain.

1 iii) Álvaro Solaz-García (RN), Inmaculada Lara-Cantón (MD), Health Research Institute
2 La Fe, Neonatal Research Group, Spain and University and Polytechnic Hospital La
3 Fe, Division of Neonatology, Valencia, Spain.

4 iv) Victoria Fumadó (MD, PhD), Cristina Garcia (MsC), Cristina Plou (MsC), Institut de
5 Recerca Sant Joan de Déu, Hospital Sant Joan de Déu, 08950 Barcelona, Spain.

6 v) Maria José Rodríguez-Lagunas (PhD), Karla Río-Aigé (MsC), Physiology Section,
7 Department of Biochemistry and Physiology, Faculty of Pharmacy and Food Science,
8 University of Barcelona (UB), 08028 Barcelona, Spain.

9 vi) Alba Padró-Arocas (IBCLC) and Paola Quifer-Rada (PhD). LactApp Women Health,
10 Barcelona, Spain.

11

12 **Contributions**

13 Concept and design: Martínez-Costa and Collado

14 Clinical aspects including recruitment of the participants, collection of samples and
15 clinical records: Mena-Tudela, Aguilar-Camprubí, Parra-Llorca, Lerin, Martínez-Costa.

16 Acquisition, analysis, or interpretation of data: Selma-Royo, Bäuerl, Pérez-Cano, Lerin,
17 Martínez-Costa, Collado

18 Drafting of the manuscript: Selma-Royo, Bäuerl, Collado

19 Critical revision of the manuscript for important intellectual content: Selma-Royo,
20 Bäuerl, Mena-Tudela, Aguilar-Camprubí, Pérez-Cano, Parra-Llorca, Lerin, Martínez-
21 Costa, Collado

22

23 **Conflict of Interest Disclosures:** None reported.

1 **References**

- 2 1. Mena-Tudela D, Aguilar-Camprubí L, Quifer-Rada P, Paricio-Talayero JM, Padró-Arocas
3 A. The COVID-19 vaccine in women: Decisions, data and gender gap. *Nurs Inq*.
4 Published online March 28, 2021:e12416. doi:10.1111/nin.12416
- 5 2. Schlaudecker EP, Steinhoff MC, Omer SB, et al. IgA and neutralizing antibodies to
6 influenza A virus in human milk: a randomized trial of antenatal influenza immunization.
7 *PLoS One*. 2013;8(8):e70867. doi:10.1371/journal.pone.0070867
- 8 3. Fox A, Marino J, Amanat F, et al. The Spike-specific IgA in milk commonly-elicited after
9 SARS-Cov-2 infection is concurrent with a robust secretory antibody response, exhibits
10 neutralization potency strongly correlated with IgA binding, and is highly durable over
11 time. *medRxiv*. Published online March 20, 2021:2021.03.16.21253731.
12 doi:10.1101/2021.03.16.21253731
- 13 4. Pace RM, Williams JE, Järvinen KM, et al. Characterization of SARS-CoV-2 RNA,
14 Antibodies, and Neutralizing Capacity in Milk Produced by Women with COVID-19.
15 *mBio*. 2021;12(1). doi:10.1128/mBio.03192-20
- 16 5. Favara DM, Ceron-Gutierrez ML, Carnell GW, Heeney JL, Corrie P, Doffinger R.
17 Detection of breastmilk antibodies targeting SARS-CoV-2 nucleocapsid, spike and
18 receptor-binding-domain antigens. *Emerg Microbes Infect*. 2020;9(1):2728-2731.
19 doi:10.1080/22221751.2020.1858699
- 20 6. Baden LR, El Sahly HM, Essink B, et al. Efficacy and Safety of the mRNA-1273 SARS-
21 CoV-2 Vaccine. *N Engl J Med*. 2021;384(5):403-416. doi:10.1056/NEJMoa2035389
- 22 7. Polack FP, Thomas SJ, Kitchin N, et al. Safety and Efficacy of the BNT162b2 mRNA
23 Covid-19 Vaccine. *N Engl J Med*. 2020;383(27):2603-2615.
24 doi:10.1056/NEJMoa2034577
- 25 8. Ramasamy MN, Minassian AM, Ewer KJ, et al. Safety and immunogenicity of ChAdOx1
26 nCoV-19 vaccine administered in a prime-boost regimen in young and old adults
27 (COV002): a single-blind, randomised, controlled, phase 2/3 trial. *Lancet*.
28 2021;396(10267):1979-1993. doi:10.1016/S0140-6736(20)32466-1
- 29 9. CDC. Vaccination Considerations for People Pregnant or Breastfeeding. Centers for
30 Disease Control and Prevention. Published April 28, 2021. Accessed May 9, 2021.
31 <https://www.cdc.gov/coronavirus/2019-ncov/vaccines/recommendations/pregnancy.html>
- 32 10. Gray KJ, Bordt EA, Atyeo C, et al. COVID-19 vaccine response in pregnant and lactating
33 women: a cohort study. *Am J Obstet Gynecol*. Published online March 24, 2021.
34 doi:10.1016/j.ajog.2021.03.023
- 35 11. Perl SH, Uzan-Yulzari A, Klainer H, et al. SARS-CoV-2-Specific Antibodies in Breast
36 Milk After COVID-19 Vaccination of Breastfeeding Women. *JAMA*. Published online
37 April 12, 2021. doi:10.1001/jama.2021.5782
- 38 12. Fox A, Norris C, Amanat F, Zolla-Pazner S, Powell RL. The vaccine-elicited
39 immunoglobulin profile in milk after COVID-19 mRNA-based vaccination is IgG-
40 dominant and lacks secretory antibodies. *medRxiv*. Published online January 1,
41 2021:2021.03.22.21253831. doi:10.1101/2021.03.22.21253831
- 42 13. Padró-Arocas A, Quifer-Rada P, Aguilar-Camprubí L, Mena-Tudela D. Description of an
43 mHealth tool for breastfeeding support: LactApp. Analysis of how lactating mothers seek

- 1 support at critical breastfeeding points and according to their infant's age. *Res Nurs*
2 *Health*. 2021;44(1):173-186. doi:10.1002/nur.22095
- 3 14. Bäuerl C, Randazzo W, Sánchez G, et al. SARS-CoV-2 RNA and antibody detection in
4 human milk from a prospective multicenter study in Spain. *medRxiv*. Published online
5 January 1, 2021:2021.05.06.21256766. doi:10.1101/2021.05.06.21256766
- 6 15. García-Mantrana I, Alcántara C, Selma-Royo M, et al. MAMI: a birth cohort focused on
7 maternal-infant microbiota during early life. *BMC Pediatr*. 2019;19(1):140.
8 doi:10.1186/s12887-019-1502-y
- 9 16. McGuire MK, Seppo A, Goga A, et al. Best Practices for Human Milk Collection for
10 COVID-19 Research. *Breastfeed Med*. 2021;16(1):29-38. doi:10.1089/bfm.2020.0296
- 11 17. Demers-Mathieu V, Do DM, Mathijssen GB, et al. Difference in levels of SARS-CoV-2
12 S1 and S2 subunits- and nucleocapsid protein-reactive SIgM/IgM, IgG and SIgA/IgA
13 antibodies in human milk. *Journal of Perinatology*. 2021;41(4):850-859.
14 doi:10.1038/s41372-020-00805-w
- 15 18. Keulen BJ van, Romijn M, Bondt A, et al. Breastmilk; a source of SARS-CoV-2 specific
16 IgA antibodies. *medRxiv*. Published online August 21, 2020:2020.08.18.20176743.
17 doi:10.1101/2020.08.18.20176743
- 18 19. Esteve-Palau E, Gonzalez-Cuevas A, Guerrero ME, et al. Quantification of specific
19 antibodies against SARS-CoV-2 in breast milk of lactating women vaccinated with an
20 mRNA vaccine. *medRxiv*. Published online April 7, 2021:2021.04.05.21254819.
21 doi:10.1101/2021.04.05.21254819
- 22 20. Valcarce V, Stafford LS, Neu J, et al. Detection of SARS-CoV-2 specific IgA in the
23 human milk of COVID-19 vaccinated, lactating health care workers. *medRxiv*. Published
24 online January 1, 2021:2021.04.02.21254642. doi:10.1101/2021.04.02.21254642
- 25 21. Demers-Mathieu V, DaPra C, Mathijssen G, et al. Human Milk Antibodies Against S1 and
26 S2 Subunits from SARS-CoV-2, HCoV-OC43, and HCoV-229E in Mothers with A
27 Confirmed COVID-19 PCR, Viral SYMPTOMS, and Unexposed Mothers. *Int J Mol Sci*.
28 2021;22(4). doi:10.3390/ijms22041749
- 29 22. Ewer KJ, Barrett JR, Belij-Rammerstorfer S, et al. T cell and antibody responses induced
30 by a single dose of ChAdOx1 nCoV-19 (AZD1222) vaccine in a phase 1/2 clinical trial.
31 *Nat Med*. 2021;27(2):270-278. doi:10.1038/s41591-020-01194-5
- 32 23. Bradley T, Grundberg E, Selvarangan R, et al. Antibody Responses after a Single Dose of
33 SARS-CoV-2 mRNA Vaccine. *N Engl J Med*. Published online March 23, 2021.
34 doi:10.1056/NEJMc2102051
- 35 24. Krammer F, Srivastava K, Alshammery H, et al. Antibody Responses in Seropositive
36 Persons after a Single Dose of SARS-CoV-2 mRNA Vaccine. *N Engl J Med*.
37 2021;384(14):1372-1374. doi:10.1056/NEJMc2101667
- 38 25. Levi R, Azzolini E, Pozzi C, et al. One dose of SARS-CoV-2 vaccine exponentially
39 increases antibodies in recovered individuals with symptomatic COVID-19. *J Clin Invest*.
40 Published online May 6, 2021. doi:10.1172/JCI149154

41

42

1

2 **Table 1:** Characteristics of the volunteers included in the study.

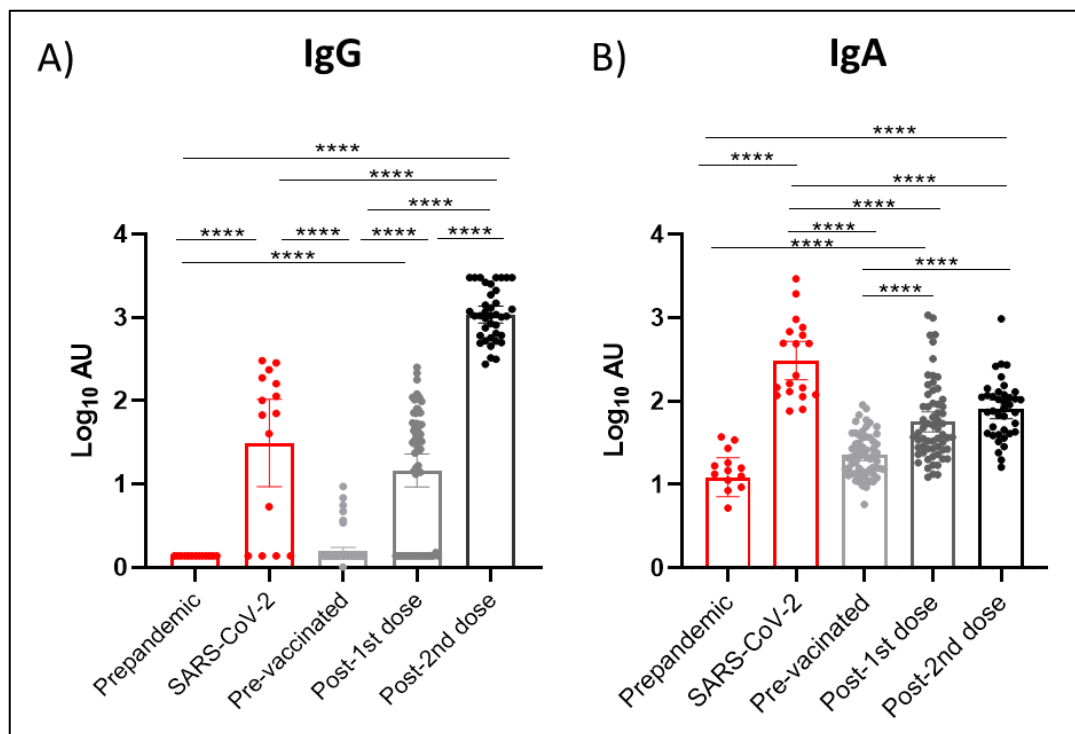
| | BioNtech/Pfizer N=30 | Moderna N=21 | Oxford/AstraZeneca N=24 | p-value |
|---|---------------------------------|-------------------------|------------------------------------|--------------------|
| Maternal characteristics | | | | |
| Age (y) | 34.2 ±4.3 | 35.3 ±3.7 | 34.6 ±2.4 | 0.838 |
| Chronic diseases (hypothyroidism, heart disease) | 6 (20.0%) | 4 (19.0%) | 3(12.5%) | 0.583 |
| Medication | 5 (16.7%) | 3 (14.3%) | 2 (8.3%) | 0.817 |
| Gestational age (weeks) | 39.1 ±2.3 | 39.6 ±1.4 | 39.9 ±1.3 | 0.259 |
| Education degree (health-workers) | 6 (20.0%) | 20 (95.2%) | 20 (83.3%) | <0.0001* |
| SARS-CoV-2 positive PCR before vaccine | 6 (20.0%) | 2 (9.5%) | 0 (0%) | 0.066 |
| Infant characteristics | | | | |
| Gender (female, %) | 9 (30.0%) | 9 (42.8%) | 12 (50.0%) | 0.313 |
| Mode of birth (C-section, %) | 6 (20.0%) | 6 (28.6%) | 3 (12.5%) | 0.440 |
| Weight at birth (g) | 3295.5 ±416.0 | 3500.3 ±600.5 | 3445.2 ±371.5 | 0.260 |
| Length at birth (cm) | 50.8 ±2.1 | 50.6 ±2.4 | 51.2 ±1.8 | 0.617 |
| Infant age at maternal vaccination (month) | 13.2±8.4 | 11.4±5.5 | 14.7±7.0 | 0.319 |
| Exclusive breastfeeding at maternal vaccination (%) | 3 (10.0%) | 3 (14.3%) | 1 (4.2%) | 0.501 |

3 Categorical data is presented as positive cases (% of the total population). Chi-squared test and T-test were used to
 4 test significant differences in clinical categorical and continuous variables, respectively, according to vaccine.

5

6

1



2

3

4

5

6

7

8

9

10

11

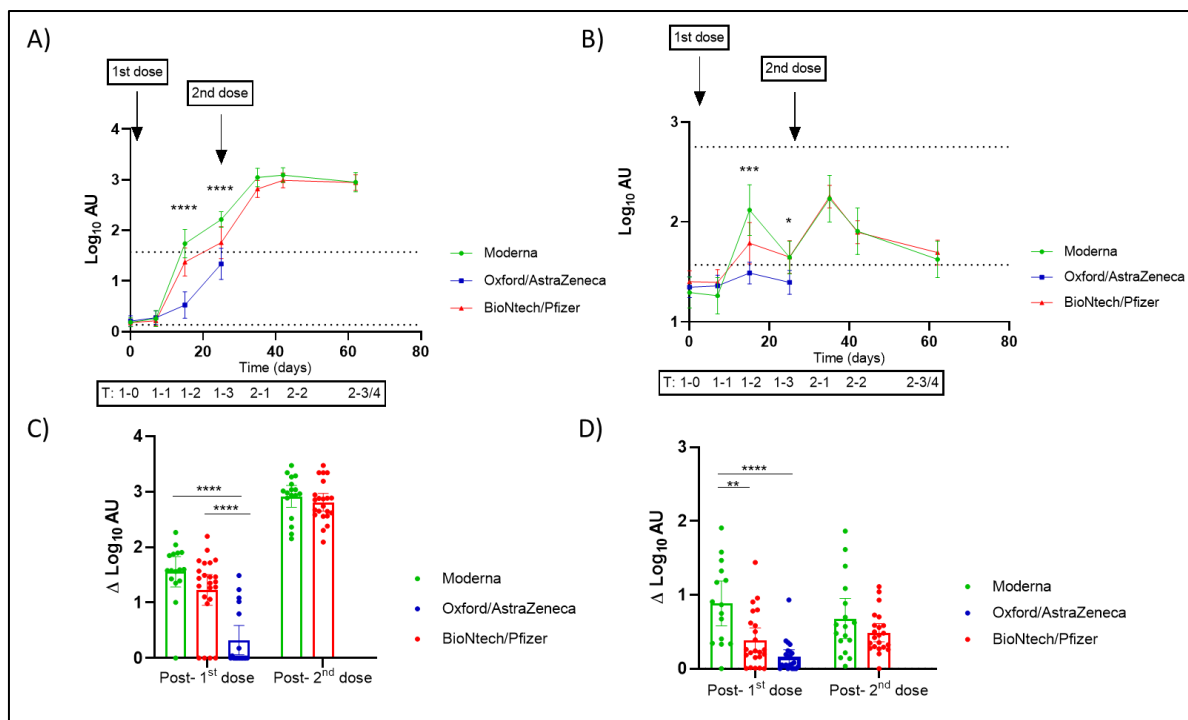
12

13

14

15

Figure 1. Effect of vaccination on IgG and IgA presence in breast milk. Results of IgG (A) and IgA (B) levels of the three available vaccines in Spain were grouped according to the post-vaccination days. Time points shown in the figure are as following: Post-1st dose (2 weeks after 1st dose of the three studied vaccines), post- 2nd dose (2 week after 2nd dose of the mRNA-based vaccines). One-way ANOVA with a Tukey's post-hoc test for multiple comparisons was performed to assess the statistical significance between groups. Data is presented as mean and 95% of CI of the log-transformed arbitrary units (AU). * p<0.05, ** p<0.01, *** p<0.001, **** p<0.0001.



1

2 **Figure 2. Effect of vaccination on IgG and IgA found in breast milk according to the administered**
3 **vaccines in Spain. A, B) Trajectories of the anti-SARS-CoV-2 IgG (A) and IgA (B) in breast milk samples**
4 according to vaccine from baseline (before the 1st dose) to 3-4 weeks post vaccination course. For the
5 adenovirus-vectored vaccine (Oxford/AstraZeneca) only the period up to 3 weeks following the 1st dose was
6 analyzed. The upper dotted line in the plots of trajectories represent the mean of the log transformed arbitrary
7 units (AU) for mothers confirmed of SARS-CoV-2 infection. The lower dotted lines in the trajectories plot
8 represent the established positive cut-off value (log of the mean+2SD of pre-pandemic anti-SARS-CoV-2 IgA
9 and IgG AU). Mixed-effect analysis with multiple comparisons post-hoc test was performed to test the
10 significance in the antibody's presence in breast milk and the differences according to vaccines
11 (**Supplementary data, Table S4**). Y- axis marked the approximated days of sampling and the code of the
12 timing as following: pre-vaccination (1-T0: 0 days), 1 week (1-T1), 2 weeks (1-T2) and 3 weeks (1-T3)
13 post the 1st dose of vaccine; and 1 week (2-T1), 2 weeks (2-T2) and 3-4 weeks (2-T3/4) post 2nd dose. Comparison
14 of the increment in log-transformed AU from the determination of SARS-CoV-2 IgG (C) and IgA (D) from
15 baseline to 2 weeks post 1st dose and 2nd dose. One-way ANOVA with a Tukey's post-hoc test for multiple
16 comparisons was performed to assess the statistical significance of the differences in the antibody detection.
17 Data is presented as mean and 95% of CI of the log-transformed arbitrary units (AU). * p<0.05, ** p<0.01,
18 *** p<0.001, **** p<0.0001.

19

20

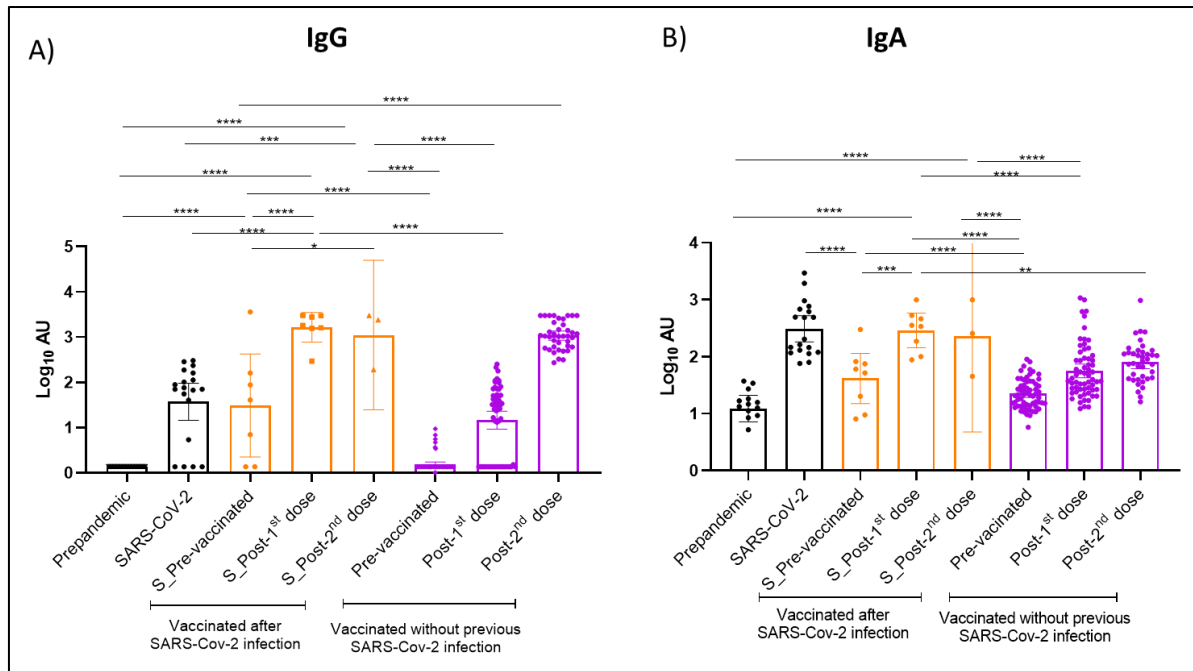
21

22

23

24

25



1

2 **Figure 3. Effect of SARS-CoV-2 vaccination on antibody presence in breast milk in mothers with**
 3 **previous SARS-CoV-2 infection compared to those without previous exposure.** Maternal samples from
 4 SARS-CoV-2 positive women (orange) before vaccination and those without viral exposure before vaccination
 5 (purple) were analyzed for detection of IgG (A) and IgA (B) antibody levels against RBD SARS-CoV-2. One-
 6 way ANOVA with a Tukey's post-hoc test for multiple comparisons was performed to assess the statistical
 7 significance of the differences in the antibody detection. Only those differences between the grouped samples
 8 of the vaccinated mothers with previous SARS-CoV-2 infection and all other analyzed groups are shown. The
 9 time points shown in the figure are as following: Post-1st dose (2 weeks after 1st dose of the three studied
 10 vaccines), post- 2nd dose (2 weeks after 2nd dose of the mRNA-based vaccines). Data is presented as mean and
 11 95% of CI of the log-transformed arbitrary units (AU). * p<0.05, ** p<0.01, *** p<0.001, **** p<0.0001.

12

13

14

15

16

17

18

19

20

21

22

23

24