

1 **Full title:** Can alcohol consumption in Germany be reduced by alcohol screening, brief
2 intervention and referral to treatment in primary health care? Results of a simulation study
3 **Short title:** Reducing alcohol consumption through screening, brief intervention and referral to
4 treatment in Germany

5
6 Jakob Manthey*^{1,2,3}, Adriana Solovei⁴, Peter Anderson^{5,6}, Sinclair Carr², Jürgen Rehm^{2,7,8,9,10}

7
8 ¹ Institute of Clinical Psychology and Psychotherapy, Technische Universität Dresden, Chemnitzer Str.
9 46, 01187 Dresden, Germany

10 ² Center for Interdisciplinary Addiction Research (ZIS), Department of Psychiatry and Psychotherapy,
11 University Medical Center Hamburg-Eppendorf (UKE), Martinistraße 52, 20246 Hamburg, Germany

12 ³ Department of Psychiatry, Medical Faculty, University of Leipzig, Semmelweisstraße 10, 04103
13 Leipzig, Germany

14 ⁴ Department of Health Promotion, CAPHRI Care and Public Health Research Institute, Maastricht
15 University, P. Debyeplein 1, Maastricht, The Netherlands

16 ⁵ Population Health Sciences Institute, Newcastle University, Baddiley-Clark Building, Richardson Road,
17 Newcastle upon Tyne NE2 4AX, UK

18 ⁶ CAPHRI Care and Public Health Research Institute, Maastricht University, POB 616, 6200 MD,
19 Maastricht, The Netherlands

20 ⁷ Institute for Mental Health Policy Research & Campbell Family Mental Health Research Institute,
21 Centre for Addiction and Mental Health, 33 Ursula Franklin Street, Toronto, Ontario, Canada, M5S 2S1

22 ⁸ Dalla Lana School of Public Health, University of Toronto, 155 College Street, Toronto, ON, M5T 1P8,
23 Canada

24 ⁹ Department of Psychiatry, University of Toronto, 250 College Street, 8th floor, Toronto, Ontario,
25 Canada, M5T 1R8

26 ¹⁰ Department of International Health Projects, Institute for Leadership and Health Management, I.M.
27 Sechenov First Moscow State Medical University, Trubetskaya str., 8, b. 2, 119992, Moscow, Russian
28 Federation

29

30 * Corresponding author: jakob.manthey@tu-dresden.de

31 **Abstract**

32 **Background**

33 Screening, brief intervention and referral to treatment (SBIRT) is a programme to reduce
34 alcohol consumption for drinkers with high alcohol consumption levels. Only 2.9% of patients in
35 primary health care (PHC) are screened for their alcohol use in Germany, despite high levels of
36 alcohol consumption and attributable harm. We developed an open-access simulation model to
37 estimate the impact of higher SBIRT delivery rates in German PHC settings on population-level
38 alcohol consumption.

39 **Methods and findings**

40 A hypothetical population of drinkers and non-drinkers was simulated by sex, age, and
41 educational status for the year 2009 based on survey and sales data. Risky drinking persons
42 receiving BI or RT were sampled from this population based on screening coverage and other
43 parameters. Running the simulation model for a ten-year period, drinking levels and heavy
44 episodic drinking (HED) status were changed based on effect sizes from meta-analyses.

45 In the baseline scenario of 2.9% screening coverage, 2.4% of the adult German
46 population received a subsequent intervention between 2009 and 2018. If every second PHC
47 patient would have been screened for alcohol use, 21% of adult residents in Germany would
48 have received BI or RT by the end of the ten-year simulation period. In this scenario, population-
49 level alcohol consumption would be 12% lower than it was in 2018, without any impact on HED
50 prevalence. Screening coverage rates below 10% were not found to have a measurable effect on
51 drinking levels.

52 **Conclusions**

53 Large-scale implementation of SBIRT in PHC settings can yield substantial reductions of
54 alcohol consumption in Germany. As high screening coverage rates may only be achievable in
55 the long run, other effective alcohol policies are required to achieve short-term reduction of
56 alcohol use and attributable harm in Germany. There is large potential to apply this open-access
57 simulation model to other settings and for other alcohol interventions.

58 **Keywords:**

59 Alcohol use, drinking, screening, brief intervention, referral to treatment, primary health
60 care, statistical modelling, simulation study, population distribution, SBIRT

61 **Introduction**

62 Globally, alcohol use is a major risk factor for the burden of mortality and disease [1, 2].
63 Various initiatives have been set by the World Health Organization (WHO) and the United
64 Nations has set objectives to reduce this burden [3]. Among five high-impact and cost-effective
65 strategies to reduce alcohol use and the resulting burden of disease, the WHO recommends
66 facilitating access to screening and brief interventions (SBI), and treatment [4-6].

67 Screening for alcohol use, brief intervention (if the alcohol use patterns exceed a certain
68 threshold; BI), and referral to specialized treatment (RT; full acronym: SBIRT) is an evidence-
69 based practice used to identify, reduce, and prevent risky alcohol and other drug use and
70 attributable harm (for an introduction, see [7, 8]; for overviews, see [9, 10]).

71 In Germany, application of SBIRT is recommended by the ‘Guidelines on Screening,
72 Diagnosis and Treatment of Alcohol Use Disorders’ [11], however, survey data from the federal
73 state of Bremen suggest that only 2.9% of patients were screened by their primary health care
74 (PHC) providers in 2016 [12]. Given the persistently high prevalence of alcohol use disorders
75 (2018: men: 9.2%; women: 3.6%, [13]), alcohol per capita consumption (APC; recorded sales in
76 2018: 10.8 litres, [14]), and alcohol-attributable mortality (2016: 45,000 or 5% of all deaths,
77 [15]) in Germany, strategies to curb consumption and adverse consequences are urgently
78 required and SBIRT presents a viable option.

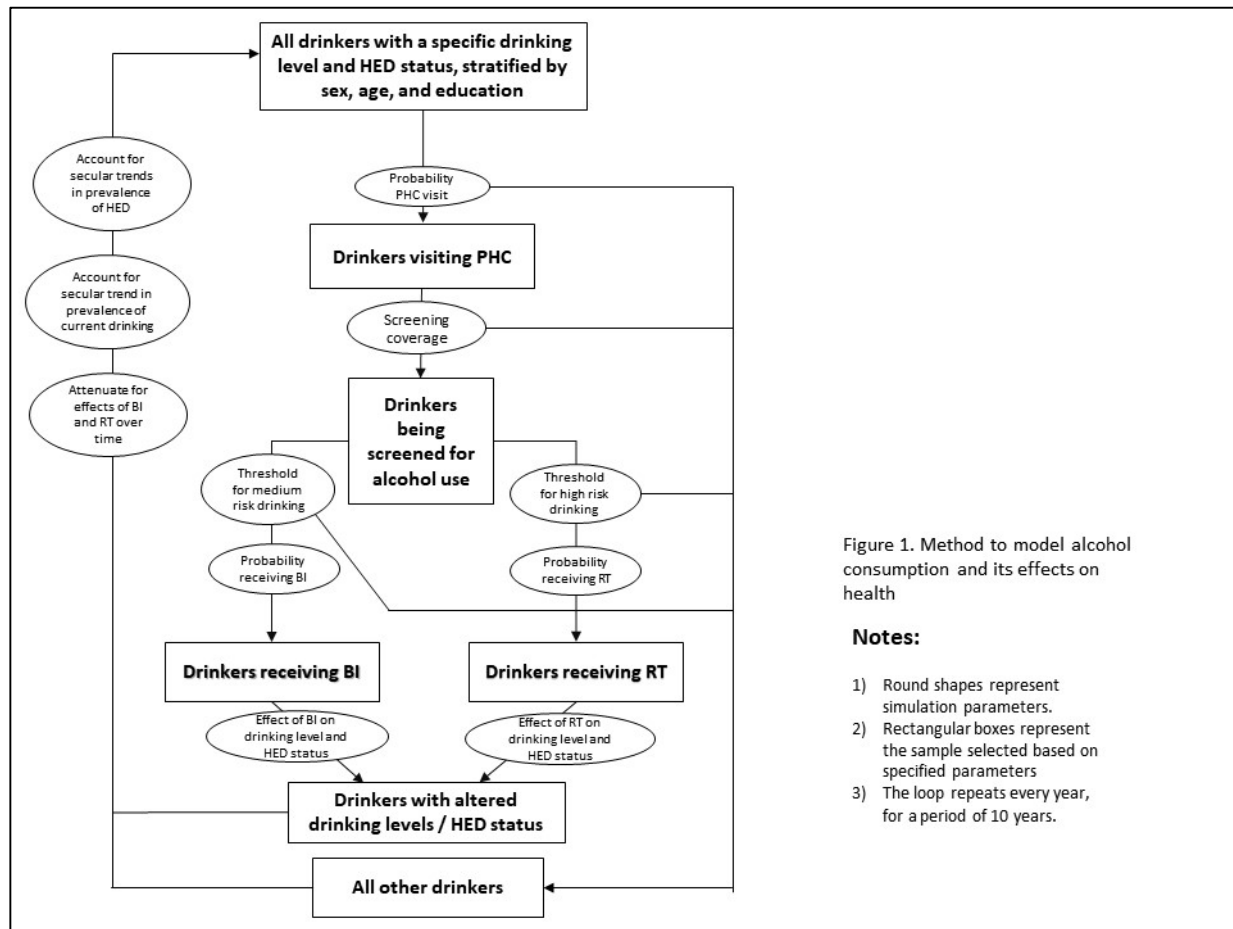
79 In a 2014 systematic review, 22 studies have been identified estimating the cost-
80 effectiveness of SBI programmes, none of which was performed for Germany [16]. The only
81 application of a simulation model to quantify the effects of SBI in Germany known to the authors
82 was carried out as part of a report issued by the Organization for Economic Co-operation and
83 Development [17]. While the report found the potential of SBI to be sizeable, the results cannot
84 be easily reproduced or the method extended, as the underlying programme was not published.

85 In fact, none of the 22 studies identified in the 2014 review disclosed their simulation
86 programmes [16]. Further, the two perhaps most common and internationally applied simulation
87 programmes do not disclose their source code to the public (for applications of the programs, see
88 [18] and [19]), making it impossible for other researchers to apply or adapt the programme on
89 their own.

90 In this contribution, we develop an open-access simulation model which serves to
91 estimate the impact on increased SBIRT activities in PHC settings on population drinking

92 patterns and levels. We first give an extensive description of the simulation model and then
 93 present results of an application for Germany, testing how alcohol consumption would have
 94 changed if more patients would have been screened for their alcohol use in PHC settings.
 95

96 Materials and methods



97
 98 **Fig 1. Flow-chart of simulation procedure.** Round shapes represent simulation
 99 parameters; rectangular boxes represent the sample selected based on specified parameters; the
 100 loop repeats every year, for a period of 10 years.

101
 102 The methods employed can be summarized in four steps: 1) A complete time series of
 103 alcohol data, more specifically of drinking status and drinking levels, stratified by sex, age, and
 104 educational status, was obtained by combining survey and sales data for the years 2009 to 2018;
 105 2) A hypothetical population for the year 2009 was drawn, for which drinking status, as well as

106 drinking levels, were assigned based on data from the first step. 3) For risky drinking persons
 107 (definition see Table 1) who were identified by their treating general practitioners through
 108 alcohol screening in that year, effects of BI and RT were applied to change drinking levels and
 109 patterns. 4) We continued with step 3 in the next year but prior to applying effects from BI and
 110 RT, we accounted for: a) attenuating effects of BI and RT over time; and, b) secular changes in
 111 prevalence of any drinking and heavy episodic drinking (HED). The simulation procedure is
 112 outlined in Fig 1 and all simulation parameters are summarized in Table 1.

113

114 **Table 1. Description and sources of simulation parameters**

Type of parameter	Description of parameter	Source
APC	Recorded APC for all years 2009 to 2018	obtained from [20]
Drinking status	Prevalence of drinking status at base year, stratified by sex, age group, and educational level	obtained from [13, 21]
Risky drinking	Cutoffs to define low, medium and high risk drinking based gram pure alcohol intake per day (women: 21g and 41g; men: 41g and 61g)	obtained from [22]
PHC access	Probability for PHC visits, stratified by sex, age group, educational level, and drinking level	calculated from [23]
Screening probability	Probability of screening among PHC patients: baseline (2.9%) but varied in alternative scenarios (0%, 10%, 25%, 50%, 75%)	baseline obtained from [12]
Intervention probability	Probability of BI and RT among positively screened patients: 50%	obtained from [12]
Effect size of brief intervention	The proportional reduction of a) daily drinking levels (women: -15.8%, -31.1 to -1.1%; men: -12.0%, -18.6 to -5.7%) and b) risk reduction of HED (risk difference: -0.07, -0.12 to -0.02)	a) recalculated and b) obtained from a meta-analysis [24].
Effect size of referral to treatment	Effect size of RT, assumed to be the same as for BI	
Attenuation of effects	The attenuation of intervention effects, assuming that BI effects to remain stable for a period of four years and to attenuate thereafter and reach 0 after ten years (linearly imputed for all years five to ten)	according to [25] and [26]

115 APC = pure alcohol per capita consumption; BI = Brief Intervention; HED = Heavy

116 Episodic Drinking; PHC = Primary Health Care; RT = Referral to Treatment

117

118

119 **Step 1: Obtaining a complete time series of alcohol data**

120 A complete time series of alcohol data was obtained by combining survey, alcohol sales,
121 as well as population data. From a repeated large-scale cross-sectional survey conducted in 2009,
122 2012, 2015, and 2018 (key survey results reported in [13, 21]), we obtained prevalence estimates
123 for each drinking status (lifetime abstinence, former drinking - FD, and current, i.e., past-year,
124 drinking - CD), heavy episodic drinking (HED, defined as at least one occasion on which at least
125 60g pure alcohol was consumed in the past 30 days), as well as reported daily intake of pure
126 ethanol (in grams per day, g/d). All data were stratified by sex (women, men), age group (15-34,
127 35-49, 50-64, 65+ years), and educational level (low, middle, and high according to the
128 International Standard Classification of Education [27]). HED prevalence was further stratified
129 by drinking level, for low, medium, and high-risk drinkers. As risk thresholds, we referred to the
130 WHO definition of low chronic risk (women: below 21 g/d, men: below 41 g/d), medium chronic
131 risk (women: between 21 and 41 g/d, men: between 41 and 61 g/d), and high chronic risk
132 (women: at least 41 g/d, men: at least 61 g/d [28]). Missing years in survey data were linearly
133 imputed. Because surveys are prone to under-reporting real drinking levels (for an overview of
134 under-reporting drinking levels in European surveys including the one used, see [29]), we
135 referred to recorded APC from the World Health Organization for the years 2009 to 2018 [20],
136 indicating the pure alcohol sold per adult per year in Germany. The APC was disaggregated for
137 each sex-age-education group accounting for differences in survey-reported prevalence of
138 current drinking and reported drinking levels, resulting in the average drinking levels per drinker
139 in each group of interest. Lastly, sex, age, and education stratified population data for all years
140 was obtained by combining population data from UN (providing data for all age groups and
141 years, but not by education) and EUROSTAT (providing education breakup for all years, but
142 only for age groups up to 74 years). As a result, we obtained a complete set of prevalence
143 estimates for lifetime abstinence, former drinking, current drinking, and HED, as well as average
144 drinking levels per drinker – for all years 2009 to 2018 and by sex, age, and education. These
145 data served as input data for the next step.

146

147

148 **Step 2: Simulating baseline alcohol consumption in the population**

149 For the year 2009, a population sample of 100 persons was drawn, stratified by sex, age,
150 and educational level. Using binomial distributions, the drinking status prevalence estimates
151 described in step 1 were used to determine the drinking status (either lifetime abstainer, former
152 drinker, or current drinker) for each person. Second, we determined daily drinking levels (in
153 grams pure alcohol per day) for each current drinker, which was drawn from a gamma
154 distribution, which has been shown to approximate alcohol use self-reports from surveys [30,
155 31]. Lastly, HED status was determined for each current drinker based on the data from step 1,
156 again using binomial distributions.

157

158 **Step 3: Applying effects of SBIRT**

159 In order to apply the effects of SBIRT, the following four conditions had to be fulfilled:
160 Persons had to: attend PHC; be screened for alcohol use; drink riskily; and receive a BI (for
161 medium risk drinkers) or RT (for high-risk drinkers). In the following, each consecutive
162 conditional step is described in detail.

163 First, the prevalence of at least one annual PHC visit was obtained from a large-scale
164 survey conducted in 2016 [23], assuming that these prevalences did not change over time. As
165 with the alcohol data, the PHC visit prevalence estimates were also stratified by sex, age,
166 education, and risky drinking status (low, medium, high; thresholds see above). Based on these
167 prevalence estimates, binomial distributions were used to determine whether a person had at least
168 one PHC visit in the current year.

169 Second, the likelihood to be screened was set at 2.9% in the baseline scenario (as
170 reported in a recent survey, [12]). In alternative scenarios, we repeated the simulation at
171 screening rates of 0%, 10%, 25%, 50%, and 75%. This parameter served as the main
172 manipulation for the simulation – as all other parameters were kept constant. For drinking
173 persons attending PHC, binomial distributions with the screening rate were used to determine
174 whether a person was screened for their level of alcohol use or not.

175 Third, for positively screened persons, i.e., being screened and drinking above the
176 medium or high risk thresholds, we assumed that every second person (regardless of sex, age,

177 education) would effectively receive a BI or RT, respectively (based on a recent survey of
178 general practitioners [12]).

179 Fourth, for positively screened persons receiving an effective intervention, the drinking
180 levels were reduced based on effect sizes determined in a 2018 meta-analysis [24]. Rather than
181 using the reported absolute reduction of drinking levels, we applied the proportional reduction of
182 drinking levels from baseline to account for the above-mentioned under-reporting (see Table 1
183 for effect sizes). In addition to manipulating the drinking levels for positively screened persons
184 receiving BI or RT, the HED status was also changed based on effect sizes from the same meta-
185 analysis (see Table 1 for effect sizes).

186

187 **Step 4: Accounting for secular changes and attenuating intervention** 188 **effects**

189 In this ten-year model, step 3, i.e., the application of SBIRT effects, was repeated for
190 each year. However, prior to applying the effects in each year, we accounted for a) attenuating
191 intervention effects from previous years, and b) secular changes in APC and drinking status
192 prevalence. First, we assumed that intervention effects on drinking levels remained stable for a
193 period of four years (according to [25]), attenuate thereafter, and nullify after ten years
194 (according to [26], linearly imputed for all years five to ten). For drinkers giving up HED
195 following BI or RT, we assumed that the chance to re-engage in HED was 50% chance starting
196 from the second year post intervention. Second, we corrected drinking levels among drinkers and
197 drinking status to match the observed trajectories in the input data.

198

199 **Sensitivity analysis**

200 Keeping all other parameters constant, we tested the impact of the attenuation of
201 intervention effects over time. In an additional sensitivity analysis, we assumed that any
202 intervention effect diminishes three years post intervention.

203

204

205 **Reporting the simulation findings**

206 We simulated six scenarios: one baseline, or as-is scenario, with an annual screening rate
207 of 2.9%, and five alternative scenarios, with annual screening rates of 0%, 10%, 25%, 50%, and
208 75%. The outcomes of interest were drinking levels and prevalence of HED, which are the two
209 alcohol exposure variables known to be most impacted by BI and RT delivered in PHC settings.

210 All findings are reported against the baseline scenario for the final year 2018, thus
211 describing the cumulative effects over a ten-year period. The simulations and all other analyses
212 were performed in R version 4.0.3 [32]. All confidence intervals were estimated by repeating the
213 simulation for 100 times, i.e., re-running the ten-year simulation for 100 different population
214 samples and obtaining the 95% percentiles to estimate the degree of uncertainty around point
215 estimates. The variation was the result of drawing parameters from their respective confidence
216 intervals (CI; e.g. current drinking prevalence for low-educated women aged 15 to 34 in 2009
217 ranged between 76.2% and 86.1%), except for recorded APC (no variation assumed for sales
218 statistics). The complete R code including input data is appended to this paper to allow for
219 complete reproducibility and adjustment of parameters to other settings (see S1 file).

220 This simulation study did not involve any human subjects, thus, no ethical review was
221 sought and no participant consent was obtained. As input data for the simulation, we obtained
222 aggregated and fully anonymized secondary data from previous surveys, which have undergone
223 formal ethical reviews (for details, see [21, 23]).

224

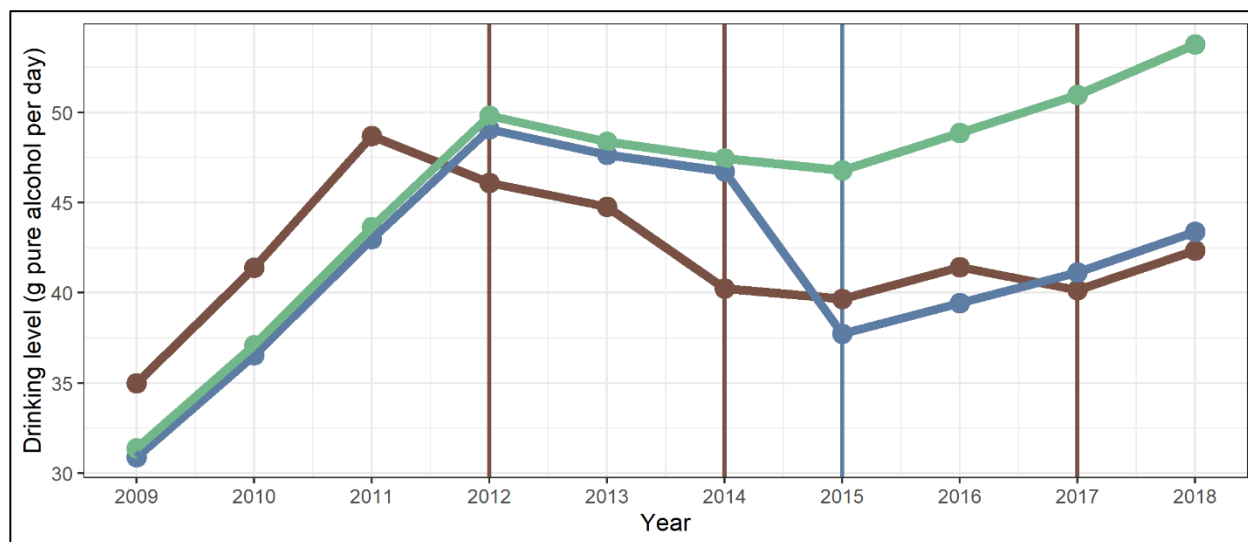
225 **Results**

226 **Alcohol exposure in Germany in the baseline scenario**

227 Between 2009 and 2018, alcohol consumption hardly changed in Germany. In this
228 period, APC remained largely constant at around 11 litres pure alcohol, and the prevalence of
229 current drinking slightly decreased, which was more pronounced among lower educated persons
230 (from 77.9% to 73.8%) than among higher educated persons (from 92.8% to 90.4%). In 2018,
231 73.8% of drinkers were estimated to have low risk drinking levels, while medium and high-risk
232 drinking was present among 11.9% and 14.3% of drinkers. Prevalence of HED in 2018 among
233 all adults was estimated at 34.8%. For 2009, all alcohol consumption estimates by sex, age, and
234 education are presented in S1 Table and for all other years available in S1 file.

235 The simulation explained

236 Fig 2 illustrates the simulation using the drinking level trajectories of three individual
237 drinkers, sampled from the group of women aged 35 to 49 years with medium educational level.
238 The green line was taken from the scenario without any screening activity, thus, the drinking
239 level follows the observed trend of drinking levels in this population, as specified in the input
240 data. The blue line was taken from the baseline scenario, thus, at a screening rate of 2.9%. This
241 individual had a very similar trajectory of their drinking levels as the first individual – however,
242 in 2015, they were screened and received an intervention (as indicated by the vertical line), thus,
243 reducing their drinking level. For the remaining years, drinking levels rose again, which was
244 driven by the secular trend in this population (as illustrated in the green line). Lastly, the brown
245 line was taken from the scenario of 75% screening activity, and this individual received three
246 interventions in the ten-year simulation period.
247



248 **Fig 2. Trajectory of daily drinking levels for three individuals.** Each colour represents
249 one individual and the vertical lines indicate reception of an intervention in that year (see text for
250 explanation).
251

252

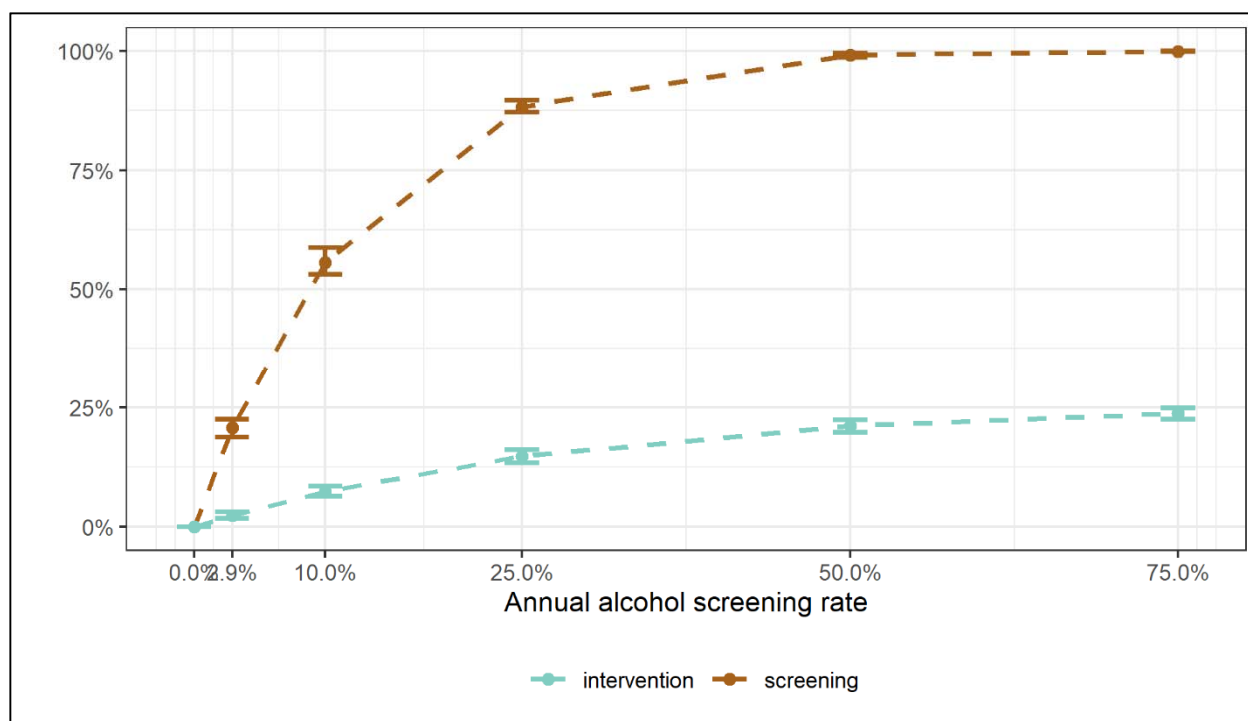
253 Estimated coverage of SBIRT

254 In the baseline, i.e., the as-is scenario, an estimated 18.0% (95% CI: 16.5% to 19.7%) of
255 the adult population was screened at least once for alcohol use within the ten-year period, based

256 on an annual screening rate of 2.9%. If general practitioners screened every 10th person, about
257 every second adult (55.7%, 95% CI: 53.2% to 58.7%) would have their alcohol use measured by
258 the end of the decade (at 50% screening rate: 99.1%, 95% CI: 98.7% to 99.5%).

259 Across the ten-year period, every 40th adult (2.4%, 95% CI: 1.8% to 3.1%) was estimated
260 to have benefitted from an intervention, i.e., BI for medium risk and RT for high-risk drinkers,
261 following alcohol screening in PHC in the baseline scenario. Increasing the screening rates to
262 10%, 50%, or 75% would have increased the intervention rates to 7.5% (95% CI: 6.4% to 8.6%),
263 21.2% (95% CI: 19.8% to 22.4%), or 23.8% (95% CI: 22.6% to 24.9%), respectively.

264 The screening and intervention rates achieved by end of the ten-year period are illustrated
265 in Fig 3.



266
267 **Fig 3. Alcohol screening and intervention rates at the end of the ten-year simulation**
268 **period, depending on annual alcohol screening rate in German primary health care**
269 **settings.** The brown line is the percentage of the German population who was screened for their
270 alcohol use. The green line is the percentage who received either a brief intervention (for
271 medium-risk drinking) or were referred to treatment (for high-risk drinking).

272
273
274

275 **Impact on APC and HED**

276 In Tables 2 and 3, the simulation results are presented for two outcomes of interest, the
277 mean daily drinking levels and the prevalence of HED in the adult population. Comparing the
278 2018 estimates of each alternative to the baseline scenario, the results suggest that mean daily
279 drinking levels would not significantly differ if alcohol screening rates varied between 0% and
280 10%. If alcohol use was assessed in every fourth patient, reductions in drinking levels among
281 men and the youngest age groups could be achieved. At 50% and 75% screening rates,
282 reductions in drinking levels in the entire population could have been achieved, which would be
283 driven mainly by men, younger and older drinkers, and drinkers with medium or high
284 educational level (see Table 2).

285

286

287 **Table 2. Differences in mean drinking levels in different alcohol screening rate**
 288 **scenarios, as compared to baseline scenario at the end of the ten-year**
 289 **simulation period**

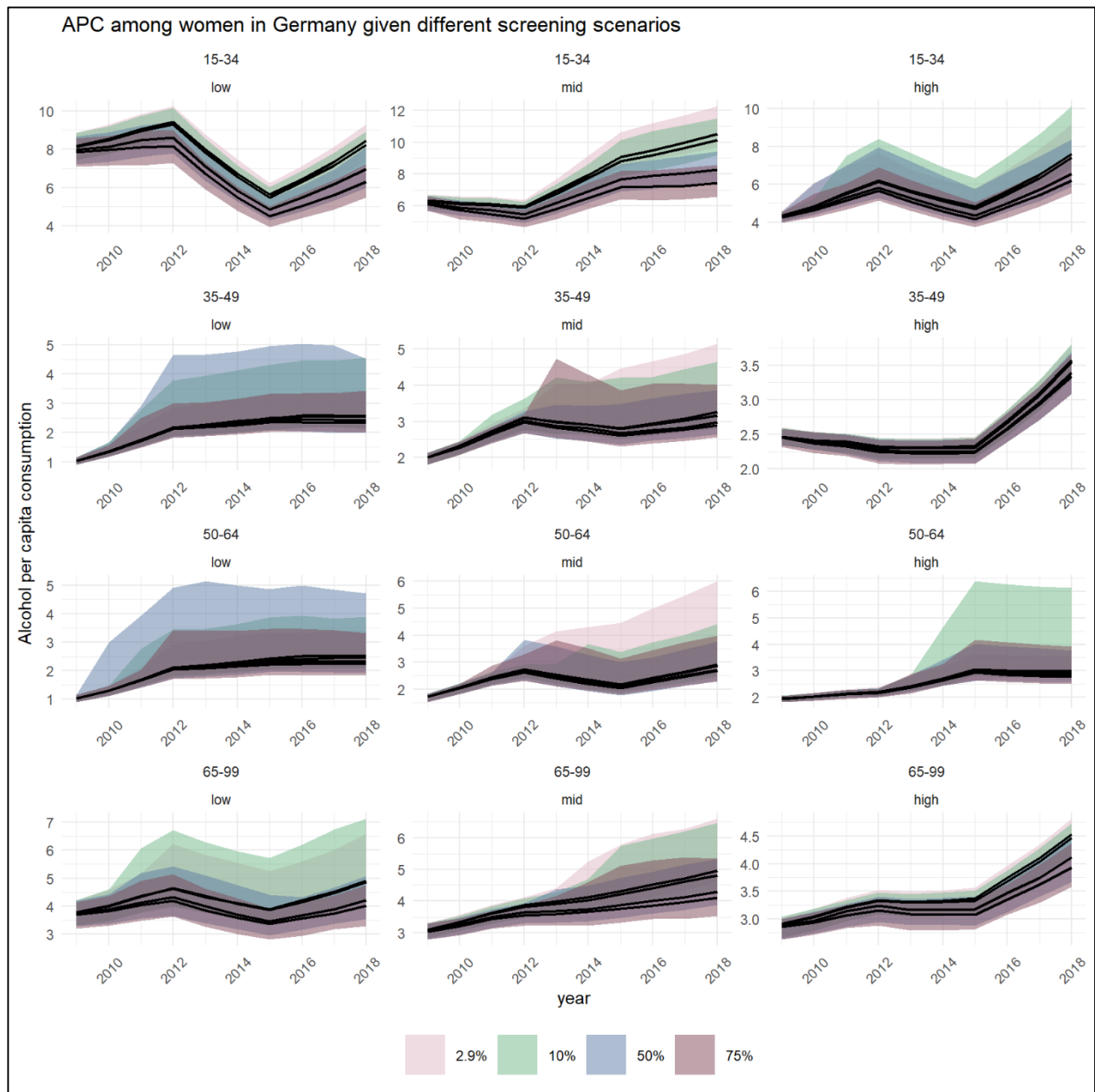
Screening coverage	0%	10%	25%	50%	75%
Total population	0.6% (-3.7 to 5.2%)	-1.5% (-6.0 to 9.0%)	-5.7% (-9.6 to 3.4%)	-12.0% (-16.3 to -6.1%)	-17.1% (-21.3 to -8.5%)
Women	0.6% (-8.1 to 8.7%)	-1.7% (-9.8 to 19.1%)	-5.7% (-12.9 to 11.3%)	-11.5% (-18.9 to 0.3%)	-15.8% (-24.1 to 1.2%)
Men	0.7% (-2.0 to 2.9%)	-1.7% (-4.0 to 0.0%)	-5.7% (-8.0 to -3.7%)	-12.7% (-14.9 to -10.1%)	-18.9% (-21.5 to -16.4%)
15-34	1.0% (-3.4 to 3.9%)	-2.5% (-7.2 to 1.2%)	-7.6% (-11.6 to -3.5%)	-15.9% (-19.3 to -11.9%)	-23.4% (-26.6 to -19.8%)
35-49	0.1% (-9.0 to 11.6%)	-1.7% (-11.5 to 24.7%)	-5.2% (-12.2 to 30.6%)	-9.9% (-17.8 to 4.2%)	-14.6% (-21.7 to -3.3%)
50-64	0.6% (-16.1 to 14.5%)	-0.7% (-14.7 to 21.3%)	-3.9% (-18.1 to 11.0%)	-8.5% (-23.3 to 8.6%)	-12.0% (-26.0 to 3.1%)
65-99	0.9% (-8.3 to 8.6%)	-1.8% (-9.6 to 8.9%)	-6.4% (-14.3 to 4.9%)	-13.2% (-20.9 to -5.6%)	-18.2% (-25.2 to -9.6%)
Low	1.2% (-5.4 to 11.8%)	-1.4% (-8.1 to 15.2%)	-6.4% (-11.7 to 8.5%)	-13.0% (-19.6 to 4.3%)	-18.6% (-24.3 to -10.1%)
Medium	0.2% (-6.7 to 6.4%)	-2.5% (-9.4 to 17.0%)	-6.6% (-13.1 to 9.0%)	-13.1% (-21.9 to -5.3%)	-18.1% (-25.1 to -5.6%)
High	0.7% (-2.6 to 6.0%)	-1.3% (-4.9 to 8.2%)	-4.4% (-7.8 to 1.3%)	-9.3% (-13.2 to -3.2%)	-13.8% (-17.0 to -9.7%)

290 Note. Presented are relative changes of mean drinking levels to the as-is-scenario, with a
 291 screening rate of 2.9%. 95% confidence interval in brackets. Bold results indicate confidence
 292 intervals not overlapping with 0, indicating significant differences to the baseline scenario.
 293 Low/Medium/High refers to educational status

294
 295

296 In Figs 4 and 5, four trajectories of APC are presented by age and educational level, for
297 the baseline and three scenarios with higher annual alcohol screening coverage. As illustrated in
298 Fig 4 for women, the APC trajectories and their corresponding confidence intervals show a high
299 overlap in most groups, suggesting no significant impact of SBIRT on drinking levels. However,
300 significant reductions of drinking levels could have been achieved for five out of twelve
301 subgroups if one out of two PHC patients were screened for their alcohol use: 15 to 34 year olds
302 with low and middle education levels, 35 to 49 year olds with high education levels, and 65 to 99
303 year olds with low and high education levels.
304

305



306

307

308

309

310

311

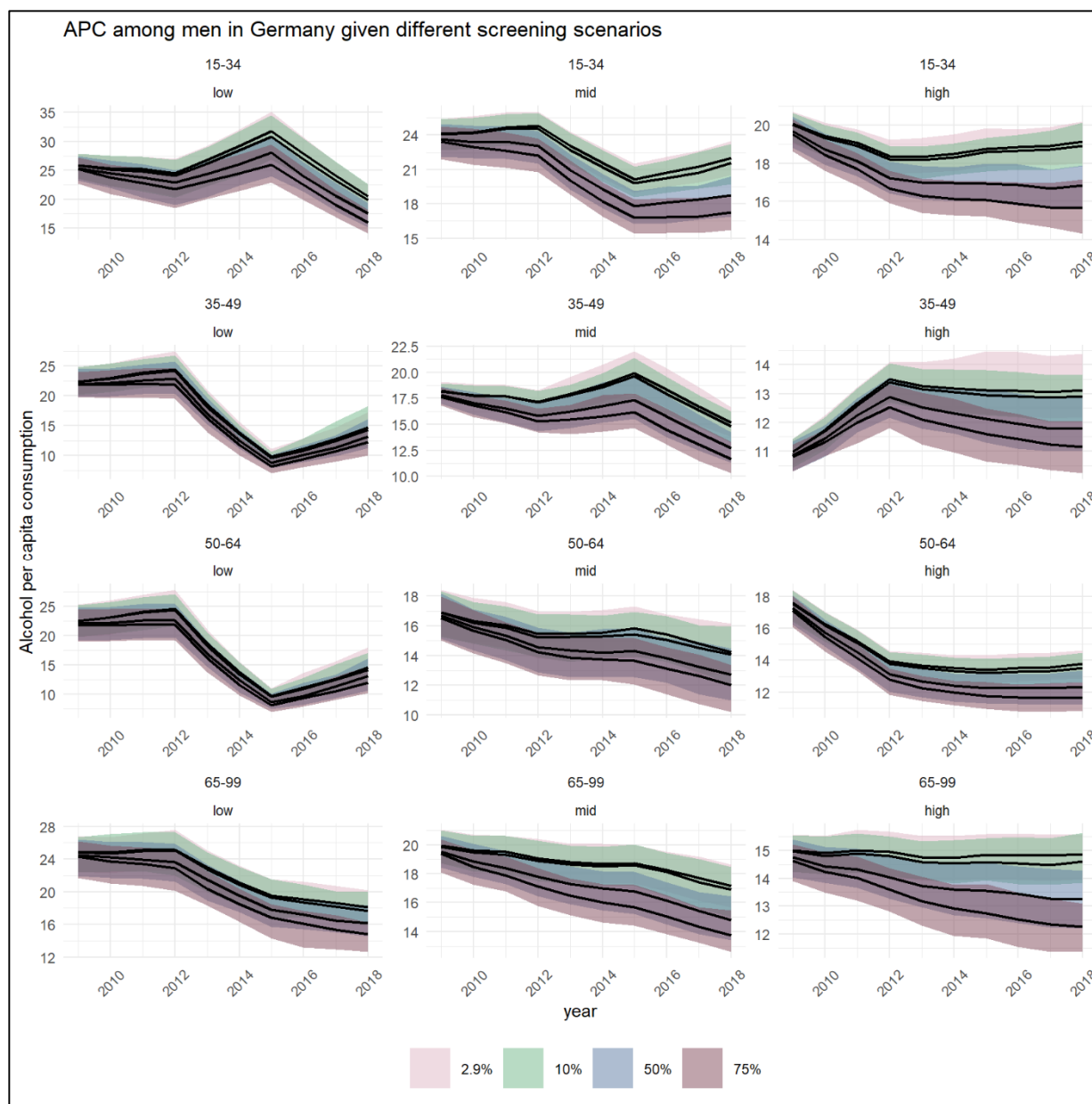
312

313

314

Fig 4. Trends of alcohol per capita consumption (in litres pure alcohol) among German women between 2009 and 2018, stratified by age (horizontal) and education status (vertical), by annual screening coverage (coloured shade). In each facet, the upper line represents the baseline scenario with a screening rate of 2.9%. The increasing coverage rate is represented by all lower lines with the second highest representing 10%, the third highest representing 50%, and the lowest representing 75% screening coverage rate.

315 For men (Fig 5), APC trajectories showed greater deviation across the screening
316 scenarios. If every second PHC patient was screened for their alcohol use, reductions in all
317 except for two out of twelve subgroups could have been achieved: 35 to 49 year olds with low
318 education levels, and 50 to 64 year olds with low education levels.
319



320
321 **Fig 5. Trends of alcohol per capita consumption (in litres pure alcohol) among**
322 **German men between 2009 and 2018, stratified by age (horizontal) and education status**
323 **(vertical), by annual screening coverage (coloured shade).** In each facet, the upper line
324 represents the baseline scenario with a screening rate of 2.9%. The increasing coverage rate is
325 represented by all lower lines with the second highest representing 10%, the third highest
326 representing 50%, and the lowest representing 75% screening coverage rate.

327
328

329 For HED prevalence, the simulation results suggest that no significant reductions could
 330 have been achieved, even at a 75% screening rate (see Table 3).

331
 332 **Table 3. Differences in prevalence of heavy episodic drinking in different**
 333 **alcohol screening rate scenarios, as compared to baseline scenario at the end**
 334 **of the ten-year simulation period**

Screening coverage	0%	10%	25%	50%	75%
Total population	1.6% (-4.6 to 11.2%)	0.2% (-5.2 to 9.3%)	-1.1% (-8.2 to 7.0%)	-3.7% (-10.8 to 2.7%)	-5.4% (-12.2 to 1.2%)
Women	3.1% (-9.5 to 20.5%)	1.0% (-8.2 to 15.0%)	-1.4% (-14.9 to 12.4%)	-4.0% (-17.3 to 9.5%)	-4.5% (-16.6 to 7.1%)
Men	0.5% (-4.1 to 4.6%)	0.0% (-4.7 to 4.2%)	-1.1% (-5.9 to 4.2%)	-3.2% (-9.6 to 0.6%)	-5.6% (-9.8 to -1.2%)
15-34	0.0% (-5.6 to 6.4%)	-0.5% (-6.6 to 8.1%)	-1.6% (-9.4 to 5.8%)	-6.0% (-13.7 to 1.6%)	-7.5% (-13.2 to -1.3%)
35-49	0.9% (-11.3 to 19.6%)	0.5% (-12.4 to 17.4%)	-0.9% (-16.8 to 14.1%)	-2.5% (-16.6 to 11.8%)	-6.4% (-20.5 to 14.0%)
50-64	2.3% (-13.8 to 32.4%)	1.7% (-18.1 to 25.5%)	-0.3% (-15.0 to 23.8%)	-2.8% (-17.2 to 19.7%)	-2.3% (-17.3 to 16.8%)
65-99	1.3% (-7.1 to 15.6%)	-0.4% (-12.3 to 13.4%)	-2.2% (-13.8 to 11.0%)	-4.9% (-15.6 to 6.1%)	-7.1% (-18.0 to 7.7%)
Low	1.5% (-6.7 to 10.9%)	1.3% (-7.9 to 8.9%)	-0.5% (-8.7 to 14.4%)	-2.8% (-10.8 to 9.4%)	-4.0% (-14.4 to 9.9%)
Medium	1.2% (-8.6 to 16.9%)	0.6% (-9.8 to 14.2%)	-1.3% (-12.2 to 10.7%)	-4.6% (-14.6 to 6.8%)	-5.5% (-17.2 to 7.6%)
High	0.2% (-8.2 to 13.9%)	0.3% (-7.8 to 11.1%)	-1.8% (-11.1 to 7.3%)	-4.3% (-13.1 to 5.2%)	-6.0% (-15.0 to 3.4%)

335 Note. Presented are relative changes to the as-is-scenario, with a screening rate of 2.9%.
 336 95% confidence interval in brackets. All confidence intervals overlap with 0, thus indicating no
 337 significant difference to the baseline scenario. Low/Medium/High refers to educational status.

Sensitivity analyses

In sensitivity analyses, we modeled the impact of SBIRT under the more conservative assumption according to which the intervention effects would completely diminish three years post intervention, as compared to the slower attenuation beginning only five years post intervention as implemented in the main analyses. As illustrated in Fig 6, the scenarios of 0 to 25% screening coverage are robust to the underlying assumption, i.e., changing the assumption would have no significant impact on the estimated drinking levels. However, in the scenarios of 50% and 75% screening coverage, the more conservative assumption would result in APC at the end of the ten-year simulation period to be, respectively, 6.1% (1.5 to 11.4%) and 6.9% (2.5 to 10.4%) higher.

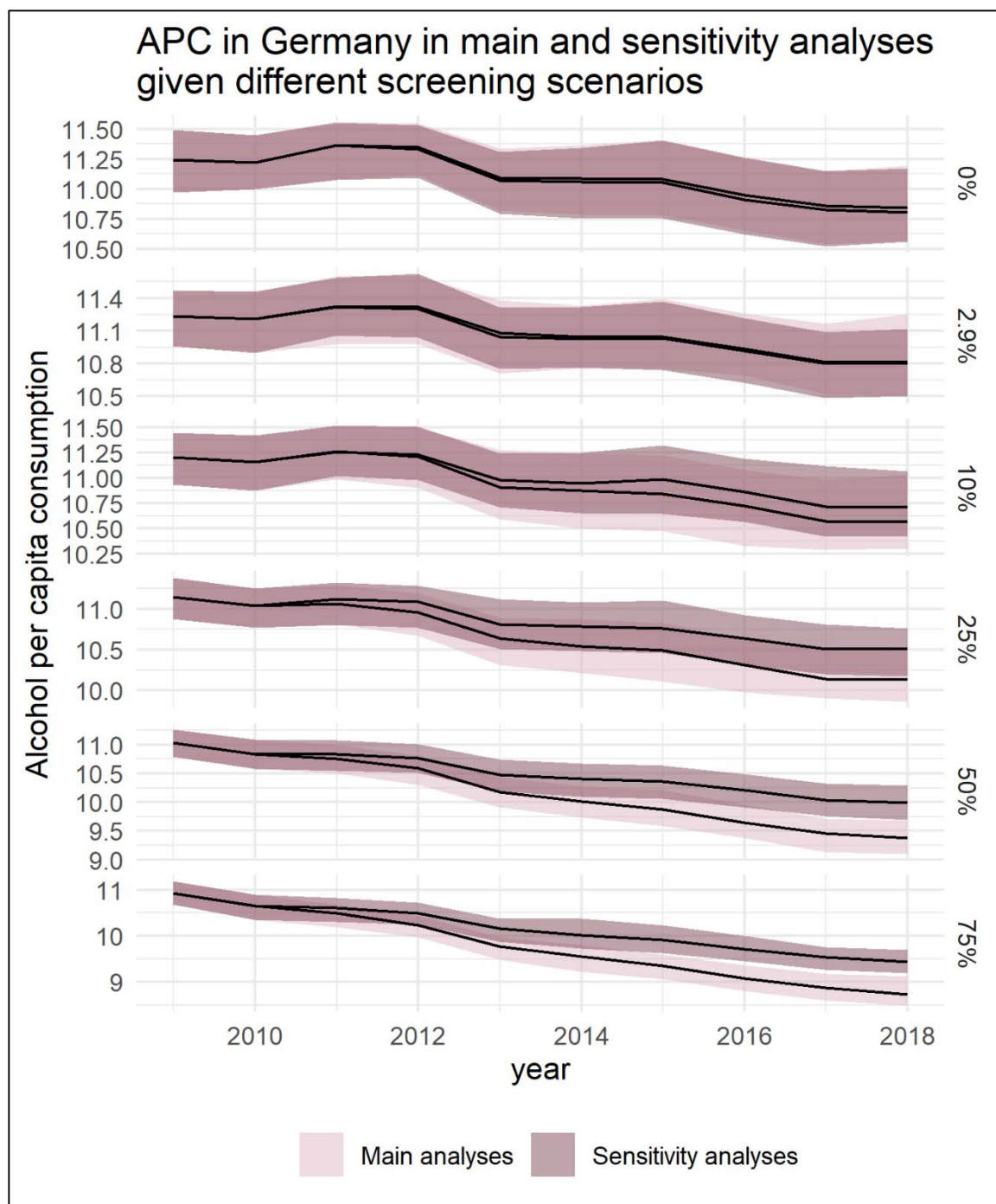


Fig 6. Trends of alcohol per capita consumption (in litres pure alcohol) in the German adult population between 2009 and 2018, by annual screening coverage (indicated at the right).

Discussion

Principal findings

The impact of SBIRT delivered in German PHC settings on population level alcohol exposure was quantified using a newly developed simulation model. We built a time series of alcohol exposure data by combining sales and survey data for the years 2009 to 2018 and assessed how alternative screening activities in PHC would have altered the observed trajectories. Our findings suggest that screening up to one tenth of patients per year would not have significantly changed how alcohol consumption has developed in Germany in this time period. Only if one fourth or more PHC patients had been screened for alcohol use once a year, a significant reduction over the ten-year period would have been observed in select groups. If every second PHC patient had been screened for alcohol use annually, per capita consumption would have been 12% lower in 2018.

Limitations

Before further discussing the findings of this study, we need to highlight several limitations. First and foremost, as with any simulation study, we rely on assumptions that may not hold true. We have attempted to be transparent with all assumptions, reporting all parameters used in the simulation, and performing rigorous sensitivity analyses to test one key assumption. While simulation studies can provide important insights for policy planning, the results should always be treated with caution. Importantly, the larger the deviations from the as-is-scenario the larger the uncertainties. Second, we tried to rely mostly on local data, except for effect sizes and attenuation parameters. Following this approach and given a lack of empirical data for Germany, we assumed the same probability for screening and BI for all drinkers, regardless of their socioeconomic position. However, BI reception was more often reported by socioeconomically disadvantaged drinkers in England [33], and if similar patterns were present in Germany, this would change the simulation findings accordingly. Third, we assume that effect sizes for BI and RT are similar, however, this might not be the case. People with very high drinking levels or with severe alcohol problems may not benefit from BI [34], however, recognition of their problems by PHC professionals through screening may result in the initiation of pharmacological and withdrawal treatment that may have greater effectiveness (for effects, see [35-37]).

However, this implication is not considered in our simulation, as we followed a conservative approach in assuming that BI and RT effect sizes are similar.

Application of the simulation model

We present an open-access simulation model that serves to estimate changes in alcohol consumption levels and patterns based on the implementation of alcohol interventions. Unlike most other simulation models, the entire source code and all input data are attached to this submission, enabling other researchers to adapt our work to other settings. Thus, this work prepares the ground for a number of applications, e.g., for estimating the potential of scaling up PHC-based alcohol interventions in other jurisdictions, or for assessing the impact of withdrawal interventions in inpatient settings (see e.g., [36]). If combined with health outcomes, e.g. by using the open-access programme InterMAHP [38], our simulation model can be readily adapted to perform health economic studies, such as cost-effectiveness analyses.

Comparison with other simulation studies

Several other simulations have quantified the effects of scaling up SBIRT (for an overview, see [16]), however, we are only aware of one application for Germany. In a 2015 report, the Organization for Economic Co-operation and Development, the effects of BI were estimated for a screening coverage of 40% and a 30% intervention probability for positive screened patients, with the effects waning within 12 months after receiving the intervention [17]. In their simulation, which was performed for a 40-year time period, the prevalence of hazardous/harmful drinking could be reduced by 5%, while our results suggest a reduction in per capita consumption by 12% in the most comparable scenario of a 50% screening rate over a period of 10 years. As in our study, no measurable effects on HED were reported in the 2015 report.

Most existing simulation studies have aimed to assess the cost-effectiveness of implementing SBIRT in PHC settings (for an overview, see [16]). Our proposed simulation methodology can be extended as well to address health economic issues, including cost-effectiveness analyses. In contrast to most previous simulation studies, we publish the entire code and all input data alongside our results, encouraging other researchers to further develop

and apply the proposed simulation model. Given the projected underachievement of achieving global goals in reducing alcohol consumption [14, 39], in particular in Western European countries [40, 41], applications of the simulation model may help to inform policy makers about the efforts required to achieve these targets. There are examples where it is possible to achieve high coverage of the measurement of alcohol consumption amongst PHC patients. In the UK, for example, an assessment of 1.8 million patient records in 2018 found that 48.8% of adult patients had a measure of alcohol consumption recorded during the previous five years [42]. Further, in integrated health-care systems where alcohol measurement is mandated and built into the electronic medical record system, as it is in the US Veterans Health Administration system, coverage can be as high as 93% [43].

Implications for alcohol policy in Germany

The simulation results suggest that the current coverage of alcohol screening hardly matters for population alcohol exposure in Germany. While alcohol consumption is slowly declining, it remains among the highest in Europe [44] and globally [14]. We show that the large-scale delivery of SBIRT in German PHC settings could be a viable measure to accelerate the ongoing trend. However, in order to achieve this in Germany, a present lack of knowledge and awareness among PHC providers would need to be addressed. In a comparative survey, nearly half of German general practitioners did not consider alcohol as an important risk factor for hypertension, in contrast to a share of 15% among respondents from France, Italy, Spain, and the UK [45] (for evidence on alcohol use and hypertension, see [46]). Further, only every second general practitioner reported to be aware of the relevant alcohol management guideline in a recent survey [47]. Given the lack of improvement of alcohol management in PHC settings [48], alternative settings to implement SBIRT are considered. In a recent randomized-controlled trial, SBIRT delivery was tested in a municipal registry office in Germany responsible for registration, passport and vehicle admission issues, with no measurable effects on drinking behaviour [49].

While further efforts are needed to increase SBIRT delivery in German PHC settings in the long run, e.g., by financial reimbursement of alcohol management activities [50], alternatives may be required to reduce alcohol consumption and attributable burden in the short-term. In the light of very low alcohol taxation rates, including no taxes for wine [51], there is a large untapped potential in increasing retail prices for alcoholic beverages, which was demonstrated in

two recent modeling studies [52, 53]. Evidence from Lithuania and Great Britain, for example, demonstrates the impact that policies targeting alcohol prices can have in reducing consumption and harm [54-57].

Conclusions

In Germany, alcohol consumption could have been 12% lower than it was in 2018 if every second PHC patient had been screened for alcohol since 2009. A large-scale implementation of SBIRT in Germany could only be achieved in the more distant future, thus, other alcohol policy options should be considered as well to achieve short-term reductions in alcohol consumption.

References

1. Shield K, Manthey J, Rylett M, Probst C, Wettlaufer A, Parry CD, et al. National, regional, and global burdens of disease from 2000 to 2016 attributable to alcohol use: a comparative risk assessment study. *The Lancet Public Health*. 2020;5(1):e51-e61.
2. Rehm J, Imtiaz S. Alcohol consumption as a risk factor for global burden of disease. A narrative review. *Substance Abuse Treatment, Prevention and Policy*. 2016;11(1):37. doi: 10.1186/s13011-016-0081-2.
3. Rehm J, Casswell S, Manthey J, Room R, Shield K. Reducing the Harmful Use of Alcohol: Have International Targets Been Met? *European Journal of Risk Regulation*. 2020:1-12. doi: 10.1017/err.2020.84.
4. World Health Organization. Management of Substance Abuse: WHO launches SAFER, a new alcohol control initiative Geneva, Switzerland: WHO; 2020 [Accessed: 15/01/2020]. Available from: https://www.who.int/substance_abuse/safer/en/.
5. Rekve D, Banatvala N, Karpati A, Tarlton D, Westerman L, Sperkova K, et al. Prioritising action on alcohol for health and development. *BMJ*. 2019;367:l6162. Epub 2019/12/08. doi: 10.1136/bmj.l6162. PubMed PMID: 31810905.
6. Chisholm D, Moro D, Bertram M, Pretorius C, Gmel G, Shield K, et al. Are the "Best Buys" for Alcohol Control Still Valid? An Update on the Comparative Cost-Effectiveness of Alcohol Control Strategies at the Global Level. *J Stud Alcohol Drugs*. 2018;79(4):514-22. PubMed PMID: 30079865.
7. SAMHSA-HRSA Center for Integrated Health Studies. SBIRT: Screening, Brief Intervention, and Referral to Treatment. Washington, D.C.2018 [Accessed: 28/01/2020]. Available from: <https://www.integration.samhsa.gov/clinical-practice/sbirt>.
8. Babor TF, Higgins-Biddle JC. Brief Intervention for hazardous and harmful drinking: A manual for use in primary care. Geneva, Switzerland: World Health Organization; 2001 [28/01/2020]. Available from: https://apps.who.int/iris/bitstream/handle/10665/67210/WHO_MSD_MSB_01.6b.pdf;jsessionid=1699BBA01FD70D9A1F9B5FC6073FA41A?sequence=1.
9. Carvalho AF, Heilig M, Perez A, Probst C, Rehm J. Alcohol use disorders. *Lancet*. 2019;394(10200):781-92. doi: Doi 10.1016/S0140-6736(19)31775-1. PubMed PMID: WOS:000483011400031.
10. American Public Health Association and Education Development Center I. Alcohol screening and brief intervention: A guide for public health practitioners. Washington, DC: National Highway Traffic Safety Administration, U.S. Department of Transportation, 2008.
11. Mann K, Batra A, Fauth-Buhler M, Hoch E, and the Guideline Group. German Guidelines on Screening, Diagnosis and Treatment of Alcohol Use Disorders. *Eur Addict Res*. 2017;23(1):45-60. doi: 10.1159/000455841. PubMed PMID: 28178695.
12. Manthey J, Lindemann C, Verthein U, Frischknecht U, Kraus L, Reimer J, et al. Versorgung von Personen mit riskantem Alkoholkonsum und schwerer Alkoholkonsumstörung in Bremen: bedarfsgerecht und leitlinienkonform? *Bundesgesundheitsblatt - Gesundheitsforschung - Gesundheitsschutz*. 2020;63(1):122-30. doi: 10.1007/s00103-019-03072-z.
13. Seitz N-N, Lochbühler K, Atzendorf J, Rauschert C, Tim, Pfeiffer G, et al. Trends in substance use and related disorders. *Deutsches Ärzteblatt Online*. 2019. doi: 10.3238/arztebl.2019.0585.

14. Manthey J, Shield KD, Rylett M, Hasan OSM, Probst C, Rehm J. Alcohol exposure between 1990 and 2017 and forecasts until 2030: A global modelling study. *The Lancet*. 2019;393(10190):2493-502. doi: 10.1016/S0140-6736(18)32744-2.
15. Shield KD, Manthey J, Rylett M, Probst C, Wettlaufer A, Parry CDH, et al. National, regional, and global burdens of disease from 2000 to 2016 attributable to alcohol use: a comparative risk assessment study. *The Lancet Public Health*. 2020;5(1):e51-e61. doi: 10.1016/S2468-2667(19)30231-2.
16. Angus C, Latimer N, Preston L, Li J, Purshouse R. What are the Implications for Policy Makers? A Systematic Review of the Cost-Effectiveness of Screening and Brief Interventions for Alcohol Misuse in Primary Care. *Frontiers in psychiatry*. 2014;5:114. Epub 2014/09/17. doi: 10.3389/fpsy.2014.00114. PubMed PMID: 25225487; PubMed Central PMCID: PMC4150206.
17. OECD. *Tackling Harmful Alcohol Use*: OECD Publishing; 2015.
18. Holmes J, Meng Y, Meier PS, Brennan A, Angus C, Campbell-Burton A, et al. Effects of minimum unit pricing for alcohol on different income and socioeconomic groups: a modelling study. *The Lancet*. 2014;383(9929):1655-64. doi: 10.1016/s0140-6736(13)62417-4.
19. Chisholm D, Moro D, Bertram M, Pretorius C, Gmel G, Shield K, et al. Are the “Best Buys” for Alcohol Control Still Valid? An Update on the Comparative Cost-Effectiveness of Alcohol Control Strategies at the Global Level. *Journal of Studies on Alcohol and Drugs*. 2018;79(4):514-22. doi: 10.15288/jsad.2018.79.514.
20. Global Information System on Alcohol and Health (GISAH) [Internet]. World Health Organization. 2021 [cited 10 March 2021]. Available from: http://www.who.int/substance_abuse/activities/gisah/en/.
21. Pabst A, van der Auwera S, Piontek D, Baumeister SE, Kraus L. Decomposing social inequalities in alcohol consumption in Germany 1995 - 2015: An Age-Period-Cohort Analysis. *Addiction*. 2019. Epub 2019/03/19. doi: 10.1111/add.14616. PubMed PMID: 30882985.
22. European Medicines Agency. Guideline on the development of medicinal products for the treatment of alcohol dependence 2010 April 5, 2016. Available from: http://www.ema.europa.eu/docs/en_GB/document_library/Scientific_guideline/2010/03/WC500074898.pdf.
23. Lange C, Finger JD, Allen J, Born S, Hoebel J, Kuhnert R, et al. Implementation of the European health interview survey (EHIS) into the German health update (GEDA). *Arch Public Health*. 2017;75:40. Epub 2017/09/25. doi: 10.1186/s13690-017-0208-6. PubMed PMID: 28936356; PubMed Central PMCID: PMC45603169.
24. Kaner EFS, Beyer FR, Muirhead C, Campbell F, Pienaar ED, Bertholet N, et al. Effectiveness of brief alcohol interventions in primary care populations. *Cochrane Database of Systematic Reviews*. 2018;(2). doi: 10.1002/14651858.CD004148.pub4. PubMed PMID: CD004148.
25. Fleming MF, Mundt MP, French MT, Manwell LB, Stauffacher EA, Barry KL. Brief Physician Advice for Problem Drinkers: Long Term Efficacy and Benefit-Cost Analysis. *Alcoholism: Clinical and Experimental Research*. 2002;26(1):36-43.
26. Wutzke SE, Conigrave KM, Saunders JB, Hall WD. The long-term effectiveness of brief interventions for unsafe alcohol consumption: a 10-year follow-up. *Addiction*. 2002;97(6):665-75. doi: 10.1046/j.1360-0443.2002.00080.x.
27. UNESCO Institute for Statistics. *International Standard Classification of Education ISCED 1997*. Paris:: United Nations Educational, Scientific and Cultural Organization

(UNESCO); 2006. Available from:

https://www.cedefop.europa.eu/files/International_Standard_Classification_for_Education_%28ISCED%29.pdf.

28. World Health Organization. International guide for monitoring alcohol consumption and related harm. Geneva, Switzerland: World Health Organization; 2000.
29. Kilian C, Manthey J, Probst C, Brunborg GS, Bye EK, Ekholm O, et al. Why Is Per Capita Consumption Underestimated in Alcohol Surveys? Results from 39 Surveys in 23 European Countries. *Alcohol Alcohol*. 2020. Epub 2020/06/04. doi: 10.1093/alcalc/agaa048. PubMed PMID: 32491170.
30. Rehm J, Kehoe T, Gmel G, Stinson F, Grant B, Gmel G. Statistical modeling of volume of alcohol exposure for epidemiological studies of population health: the US example. *Popul Health Metr*. 2010;8:3. doi: 10.1186/1478-7954-8-3. PubMed PMID: 20202213; PubMed Central PMCID: PMC2841092.
31. Kehoe T, Gmel G, Shield KD, Gmel G, Rehm J. Determining the best population-level alcohol consumption model and its impact on estimates of alcohol-attributable harms. *Population health metrics*. 2012;10(1):6.
32. R Core Team. A language and environment for statistical computing. R Foundation for Statistical Computing. Vienna, Austria: R Foundation for Statistical Computing.; 2019 [27/01/2020]. Available from: <https://www.R-project.org/>.
33. Angus C, Brown J, Beard E, Gillespie D, Buykx P, Kaner EFS, et al. Socioeconomic inequalities in the delivery of brief interventions for smoking and excessive drinking: findings from a cross-sectional household survey in England. *BMJ Open*. 2019;9(4). doi: 10.1136/bmjopen-2018-023448.
34. Knox J, Hasin DS, Larson FRR, Kranzler HR. Prevention, screening, and treatment for heavy drinking and alcohol use disorder. *The Lancet Psychiatry*. 2019. doi: 10.1016/s2215-0366(19)30213-5.
35. Heikkinen M, Taipale H, Tanskanen A, Mittendorfer-Rutz E, Lahteenvuo M, Tiihonen J. Real-world effectiveness of pharmacological treatments of alcohol use disorders in a Swedish nation-wide cohort of 125 556 patients. *Addiction*. 2021. Epub 2021/01/05. doi: 10.1111/add.15384. PubMed PMID: 33394527.
36. Manthey J, Lindemann C, Kraus L, Reimer J, Verthein U, Schulte B, et al. The potential effects of an extended alcohol withdrawal treatment programme on morbidity and mortality among inpatients in the German city of Bremen: a simulation study. *Subst Abuse Treat Prev Policy*. 2020;15(1):1. Epub 2020/01/04. doi: 10.1186/s13011-019-0249-7. PubMed PMID: 31898529.
37. Rehm J, Shield KD, Gmel G, Rehm MX, Frick U. Modeling the impact of alcohol dependence on mortality burden and the effect of available treatment interventions in the European Union. *Eur Neuropsychopharmacol*. 2013;23(2):89-97. doi: 10.1016/j.euroneuro.2012.08.001. PubMed PMID: 22920734.
38. Sherk A, Stockwell T, Rehm J, Dorocicz J, Shield KD, Churchill S. The International Model of Alcohol Harms and Policies: A New Method for Estimating Alcohol Health Harms With Application to Alcohol-Attributable Mortality in Canada. *Journal of Studies on Alcohol and Drugs*. 2020;81(3):339-51. doi: 10.15288/jsad.2020.81.339.
39. World Health Organization. Global action plan for the prevention and control of noncommunicable diseases. Geneva, Switzerland: WHO Document Production Services; 2013.

40. Probst C, Manthey J, Neufeld M, Rehm J, Breda J, Rakovac I, et al. Meeting the Global NCD Target of at Least 10% Relative Reduction in the Harmful Use of Alcohol: Is the WHO European Region on Track? *Int J Environ Res Public Health*. 2020;17(10). doi: 10.3390/ijerph17103423.
41. Droogers M, Jansen D, Lindert J, Saboga-Nunes L, Ruden M, Guichardon M, et al. Health-related Sustainable Development Goals: countdown on alcohol use, smoking prevalence, child overweight and suicide mortality. *Eur J Public Health*. 2020;30(Supplement_1):i10-i3. Epub 2020/05/12. doi: 10.1093/eurpub/ckaa027. PubMed PMID: 32391905.
42. Mansfield K, Crellin E, Denholm R, Quint JK, Smeeth L, Cook S, et al. Completeness and validity of alcohol recording in general practice within the UK: a cross-sectional study. *BMJ Open*. 2019;9(11):e031537. Epub 2019/11/28. doi: 10.1136/bmjopen-2019-031537. PubMed PMID: 31772094; PubMed Central PMCID: PMC6887039.
43. Bradley KA, Williams EC, Achtmeyer CE, Volpp B, Collins BJ, Kivlahan DR. Implementation of evidence-based alcohol screening in the Veterans Health Administration. *Am J Manag Care*. 2006;12(10):597-606. Epub 2006/10/10. PubMed PMID: 17026414.
44. World Health Organization. Status report on alcohol consumption, harm and policy responses in 30 European countries 2019. Moscow: WHO European Office for the Prevention and Control of Noncommunicable Diseases; 2019. Available from: <http://www.euro.who.int/en/health-topics/disease-prevention/alcohol-use/publications/2019/status-report-on-alcohol-consumption,-harm-and-policy-responses-in-30-european-countries-2019>.
45. Kraus L, Schulte B, Manthey J, Rehm J. Alcohol screening and alcohol interventions among patients with hypertension in primary health care: an empirical survey of German general practitioners. *Addiction Research & Theory*. 2017;25(4):285-92. doi: 10.1080/16066359.2016.1263728.
46. Roerecke M, Tobe SW, Kaczorowski J, Bacon SL, Vafaei A, Hasan OSM, et al. Sex-Specific Associations Between Alcohol Consumption and Incidence of Hypertension: A Systematic Review and Meta-Analysis of Cohort Studies. *Journal of the American Heart Association: Cardiovascular and Cerebrovascular Disease*. 2018;7(13):e008202. doi: 10.1161/JAHA.117.008202. PubMed PMID: PMC6064910.
47. Frischknecht U, Hoffmann S, Steinhauser A, Lindemann C, Buchholz A, Manthey J, et al. [Screening for Problematic Alcohol Consumption - A Survey on Guideline Implementation in Transdisciplinary Health Care of a Model Region]. *Gesundheitswesen*. 2020. Epub 2020/12/11. doi: 10.1055/a-1276-0475. PubMed PMID: 33302318.
48. Heather N. Can screening and brief intervention lead to population-level reductions in alcohol-related harm? *Addict Sci Clin Pract*. 2012;7(15). doi: doi:10.1186/1940-0640-7-15.
49. Baumann S, Staudt A, Freyer-Adam J, Bischof G, Meyer C, John U. Effects of a brief alcohol intervention addressing the full spectrum of drinking in an adult general population sample: a randomized controlled trial. *Addiction*. 2021. Epub 2021/01/16. doi: 10.1111/add.15412. PubMed PMID: 33449418.
50. O'Donnell A, Angus C, Hanratty B, Hamilton FL, Petersen I, Kaner E. Impact of the introduction and withdrawal of financial incentives on the delivery of alcohol screening and brief advice in English primary health care: an interrupted time-series analysis. *Addiction*. 2019. doi: 10.1111/add.14778.

51. Angus C, Holmes J, Meier PS. Comparing alcohol taxation throughout the European Union. *Addiction*. 2019;114(8):1489-94. Epub 2019/05/31. doi: 10.1111/add.14631. PubMed PMID: 31148313.
52. Gredner T, Niedermaier T, Brenner H, Mons U. Impact of reducing alcohol consumption through price-based policies on cancer incidence in Germany 2020 to 2050 - a simulation study. *Addiction*. 2020. Epub 2020/11/17. doi: 10.1111/add.15335. PubMed PMID: 33197097.
53. Rovira P, Kilian C, Neufeld M, Rungay H, Soerjomataram I, Ferreira-Borges C, et al. Fewer Cancer Cases in 4 Countries of the WHO European Region in 2018 through Increased Alcohol Excise Taxation: A Modelling Study. *Eur Addict Res*. 2020:1-9. Epub 2020/12/04. doi: 10.1159/000511899. PubMed PMID: 33271557.
54. Štelemėkas M, Manthey J, Badaras R, Casswell S, Ferreira-Borges C, Kalėdienė R, et al. Alcohol control policy measures and all-cause mortality in Lithuania: an interrupted time-series analysis. *Addiction*. 2021.
55. Rehm J, Štelemėkas M, Ferreira-Borges C, Jiang H, Lange S, Neufeld M, et al. Classifying Alcohol Control Policies with Respect to Expected Changes in Consumption and Alcohol-Attributable Harm: The Example of Lithuania, 2000–2019. *Int J Environ Res Public Health*. 2021;18(5):2419. PubMed PMID: doi:10.3390/ijerph18052419.
56. Rehm J, Manthey J, Lange S, Badaras R, Zurlyte I, Passmore J, et al. Alcohol control policy and changes in alcohol-related traffic harm. *Addiction*. 2020;115:655–65. Epub 2019/09/03. doi: 10.1111/add.14796. PubMed PMID: 31475395.
57. O'Donnell A, Anderson P, Jane-Llopis E, Manthey J, Kaner E, Rehm J. Immediate impact of minimum unit pricing on alcohol purchases in Scotland: controlled interrupted time series analysis for 2015-18. *BMJ*. 2019;366:l5274. Epub 2019/09/27. doi: 10.1136/bmj.l5274. PubMed PMID: 31554617.

Supporting information

S1 Table. Alcohol consumption admission probability in the German adult population in 2009, by sex, age group and educational level
S1 File. R code and input data.