

20 **Abstract:** Individuals vary substantially in their response to an acute stressor. Identifying the
21 factors contributing to these individual differences in stress reactivity is of particular interest
22 but still remains largely unknown in the stress and resilience domain. The present study aimed
23 to investigate whether and how brain reactivity to negative stimuli during a non-stressful state
24 could predict autonomic and neuroendocrine stress responses to an acute psychosocial
25 stressor in healthy adults. To address this issue, fifty-two healthy young adults were recruited
26 to view negative or neutral pictures while their electroencephalogram was recorded during a
27 non-stressful state on the first experimental day. On the second experimental day, their
28 autonomic and neuroendocrine responses to the Trier Social Stress Test (TSST) were
29 measured. Results showed that increased late positive potential (LPP) to negative relative to
30 neutral pictures was significantly associated with higher heart rate response but not with the
31 cortisol response to acute social stress. These results implicate greater neural reactivity to
32 negative stimuli as a physiological marker of heightened acute autonomic responses. These
33 findings may help identify individuals who are at increased risk of developing negative
34 outcomes under stress.

35
36 **Keywords:** ERP, Late positive potential, Negative emotion, Acute stress, Heart rate, Cortisol

37

38 **1. Introduction**

39 We all experience stressors in our daily life. Physiologically, there are two inter-related
40 and separated stress response systems, i.e., the autonomic nervous system (ANS) and the
41 hypothalamic-pituitary-adrenocortical (HPA) axis. The ANS provides fast responses to acute
42 stressors, leading to a rapid increase in heart rate (HR), whereas the HPA axis shows a
43 relatively slower response with an elevated circulating glucocorticoid (cortisol in humans)
44 level, peaking 10~20 minutes after stressor onset. These two interacting physiological
45 systems on the one hand mobilize and reallocate resources aiming at helping individuals to
46 cope with environmental threats and restore homeostasis, and on the other hand temporarily
47 suppress activities that are not essential to survival (de Kloet et al., 2005; Lupien et al., 2009;
48 Ulrich-Lai & Herman, 2009).

49 Interestingly, one characteristic of our responses to acute stressors is its large variability
50 across individuals, especially for psychological stressors (for a review, see Lupien et al.,
51 2007). Moreover, prior studies have suggested that exaggerated stress responses may decrease
52 cognitive ability and increase emotional sensitivity, which in turn lead to mental problems (de
53 Kloet et al., 2005; Lupien et al., 2009). Therefore, understanding this individual variability
54 can enable us to identify vulnerability to stress-related problems and further prevent
55 maladaptive consequences of stress.

56 The ANS and HPA responses to acute stressors are initiated and regulated by relatively
57 hard-wired neural circuits in the brain (Ulrich-Lai & Herman, 2009). Especially, the amygdala
58 plays an important role in the up-regulation of physiological stress responses, and the
59 prefrontal cortex and hippocampus, where glucocorticoid receptors are abundantly expressed,
60 are involved in the negative feedback regulation of cortisol response (McEwen, 2004).
61 Crucially, these physiological responses are primarily driven by subjective explanation: once
62 a situation is interpreted to be (potentially) threatening to the subjective wellbeing, the stress
63 response is triggered to deal with it. What lies at the root of the physiological stress responses
64 is the information processing in the stress-related neural circuits (Ulrich-Lai & Herman, 2009).
65 Thus, quantifying neurocognitive activity in the stress-related neural circuits may shed light

66 on our understanding of individual differences in stress responses.

67 Neurocognitive processing of negative emotional information can be a promising factor
68 influencing acute stress reactivity. The amygdala plays a central role in the processing of
69 emotional information including threat detection and appraisal and facilitated attention to
70 salient stimuli (Cunningham & Kirkland, 2014; Gupta, 2019; Murray, 2007; Sergerie et al.,
71 2008; Vuilleumier, 2005). Meanwhile, interacting with the hippocampus and medial
72 prefrontal cortex, the amygdala is a key brain region for stress regulation (Ulrich-Lai &
73 Herman, 2009). In fMRI studies, amygdala activity, reflected indirectly by blood oxygen
74 level-dependent (BOLD) fMRI signal, has been widely confirmed with increased response to
75 negative information, and therefore used to index neural reactivity to emotional stimuli
76 (Cunningham & Kirkland, 2014; McLaughlin et al., 2014; Sergerie et al., 2008; Swartz et al.,
77 2015). With event-related potentials (ERPs), which has high temporal resolution, researchers
78 have identified a sustained positive component reflecting sustained attention towards and
79 elaborative processing of emotionally/motivationally salient information, the late positive
80 potential (LPP). The LPP begins at approximately 300 ms after stimulus onset and sustains
81 until stimulus offset with a broad posterior-superior scalp distribution (Cuthbert et al., 2000;
82 Schupp et al., 2000; for a review see Hajcak et al., 2010). Prior studies of source analysis
83 (Keil et al., 2002) and simultaneous fMRI and EEG recordings (De Rover et al., 2012; Liu et
84 al., 2012; Sabatinelli et al., 2007) revealed that neural substrate of the LPP involves cortical
85 and subcortical brain regions including the prefrontal cortex and amygdala.

86 Increased brain reactivity to negative emotional information may predict exaggerated
87 stress responses considering the up-regulating role of the amygdala in stress response.
88 Emerging evidence showed that relatively exaggerated amygdala reactivity towards negative
89 stimuli predicted more posttraumatic stress symptoms in response to a terrorist attack
90 (McLaughlin et al., 2014) and more behavioral and psychological symptoms in response to
91 highly stressful events in combat (Admon et al., 2009) and in common civilian life (Swartz et
92 al., 2015). Similarly, increased LPP amplitude for negative relative to neutral pictures was
93 correlated with more posttraumatic stress symptoms due to traumatic life events (Lobo et al.,

94 2014). These findings suggest that pre-trauma individual differences in neural reactivity to
95 negative stimuli are predictive for the risk to develop stress-related mental disorders after
96 traumatic stressor exposure. Meanwhile, impairments of the physiological stress system are
97 implicated in stress-related psychiatric symptoms/disorders (for reviews, see Pitman et al.,
98 2012; Sherin & Nemeroff, 2011). Crucially, the link between stress and emotion
99 processing-related neural circuit (e.g., prefrontal cortex, amygdala) is bidirectional; the neural
100 circuit not only is impaired by stress but also plays an important role in regulating the stress
101 response. So far, only one study demonstrated that reduced emotion regulation ability
102 revealed as decreased prefrontal cortex activation during emotional incongruent trials
103 predicted enhanced responses to acute social stress in cortisol and α -amylase (Kaldewaij et
104 al., 2019).

105 Therefore, the present study aimed to examine whether and how neurocognitive
106 processing of emotionally negative information, i.e., the emotion processing-related LPP
107 component, could predict physiological response to an acute psychosocial stressor in a
108 healthy population. Participants were instructed to passively view negative and neutral
109 pictures in a non-stressful state with their EEG recorded. Afterwards, participants returned to
110 complete a laboratory-induced psychosocial acute stress task (the Trier Social Stress Test,
111 TSST; Kirschbaum et al., 1993) while their ANS (heart rate) and HPA (cortisol) responses
112 were monitored. According to previous findings, we hypothesized that individuals with
113 enhanced neural activity as indicated by larger LPP amplitudes to negative stimuli would
114 show stronger autonomic and/or neuroendocrine responses to an acute stress response.

115

116 2. **Methods**

117 2.1 *Participants*

118 Fifty-two healthy young adults (19 females and 33 males) with the age ranged from 18 to 25
119 years ($M = 22.5$, $SD = 1.6$) were recruited to participate in the present study. Considering
120 potential influences on stress responses, all participants were pre-screened and excluded

121 according to the following criteria: major chronic physiological disease or endocrine disorder;
122 history of psychiatric or neurological disorders; symptoms of chronic anxiety, depression or
123 insomnia; chronic use of psychiatric, neurological, or endocrine medicine; chronic overnight
124 work or irregular day/night patterns; any medication use within three days before
125 participating in the study; current periodontitis; excessive consumption of alcohol (more than
126 two alcoholic drinks a day) or nicotine (more than five cigarettes a day). For females, we
127 included those who did not take oral contraceptives during recruitment by telephone screen
128 and invited them to participate in the experiment before or after their ovulation period (which
129 is defined as the 12th to 16th days prior to the first day of the next menstrual cycle), in order
130 to control the potential influence of sex hormone on stress responses (Kirschbaum et al.,
131 1999; Kudielka & Kirschbaum, 2005). All participants had normal or corrected-to-normal
132 vision and were right-handed by self-report. All participants gave written informed consent at
133 the beginning of the experiment and got monetary compensation for their participation. This
134 experiment was approved by the Ethics Committee of Human Experimentation at the Institute
135 of Psychology, Chinese Academy of Sciences.

136

137 *2.2 General procedure*

138 Participants completed two experimental sessions within two weeks (the interval between the
139 first and second session was within 6 days, except for one participant with a 13-day delay).
140 For the first session, participants completed the passive viewing task with their EEG
141 continuously recorded. For the second session, participants returned to our lab to complete the
142 TSST while their stress responses were monitored. The TSST was implemented between 1:00
143 pm to 5:00 pm to avoid the circadian fluctuation of cortisol levels (Dickerson and Kemeny,
144 2004; Kudielka et al., 2004) and heart rates (e.g., Vandewalle et al., 2007). Upon arrival,
145 participants were instructed to rest in a quiet room for 30 min during which they filled in
146 questionnaires. After the rest period, participants provided the first salivary sample for a
147 baseline measurement. Thereafter, participants completed the TSST task for stress induction,
148 during which heart rate was continuously recorded. Salivary samples were provided at 0 min

149 (post-TSST 1), 20 min (post-TSST 2), 45 min (post-TSST 3), and 60 min (post-TSST 4) after
150 the end of the TSST task.

151

152 *2.3 Stimulus Materials*

153 A total of 60 pictures were selected from the International Affective Picture System (IAPS;
154 Lang et al., 1999), of which 30 were negative, depicting unpleasant scenes (e.g., threat and
155 mutilation), and 30 were neutral, depicting neutral scenes (e.g., household objects, leaves,
156 trees).¹ The negative and neutral pictures differed significantly on normative ratings of
157 valence (negative: $M = 2.48$, $SD = 0.57$; neutral: $M = 5.03$, $SD = 0.34$; $t(58) = -21.112$, p
158 $< .001$), arousal (negative: $M = 5.66$, $SD = 0.54$; neutral: $M = 2.92$, $SD = 0.49$; $t(58) = 20.479$,
159 $p < .001$), and dominance (negative: $M = 3.77$, $SD = 0.60$; neutral: $M = 6.02$, $SD = 0.36$; $t(58)$
160 $= -17.455$, $p < .001$).

161

162 *2.4 Passive viewing task*

163 After an initial practice block, three experimental blocks were completed with 1-2 min breaks
164 between the blocks. The 60 pictures were presented only once in a random order in each
165 experimental block. Each picture was displayed for 1000 ms in full screen on a 17-in.
166 (43.18-cm) monitor, occupying about 27.3° of horizontal visual angle and about 21.8° of
167 vertical visual angle with a viewing distance of approximately 70 cm. The inter-trial interval
168 varied randomly between 1200 and 1800 ms, during which a white cross was presented in the
169 centre of a black background (Hot et al., 2006). Participants were instructed to watch the
170 pictures attentively.

171

172 *2.5 EEG recording and preprocessing*

173 During the passive viewing task, the EEG was recorded from 64 scalp sites using Ag/AgCl

¹ The numbers of the IAPS pictures used were the following: negative (1111, 1275, 2751, 3015, 3051, 3062, 3064, 3102, 3130, 3160, 3550, 6244, 6530, 6834, 9007, 9120, 9180, 9253, 9400, 9405, 9415, 9430, 9432, 9433, 9500, 9520, 9530, 9592, 9611, and 9920) and neutral (2214, 2215, 2372, 2381, 2383, 2440, 2480, 2495, 2514, 2516, 2580, 2749, 2850, 2870, 2880, 5520, 5530, 5740, 6150, 7004, 7006, 7031, 7034, 7060, 7090, 7185, 7187, 7205, 7234, and 7950).

174 electrodes, which were placed according to the international 10–20 system and mounted in an
175 elastic cap (Neuroscan Inc., Charlotte, North Carolina, USA). An on-line reference to the left
176 mastoid and an off-line algebraic re-reference to the average of left and right mastoids were
177 adopted. A pair of electrodes was placed above and below the left eye to record the vertical
178 electrooculogram (VEOG). A pair of electrodes was placed 10 mm from the outer canthi of
179 each eye to record the horizontal electrooculogram (HEOG). All inter-electrode impedance
180 was kept below 5 k Ω . Signals were amplified and bandpass filtered from 0.05 to 100 Hz. Data
181 were digitized at 1000 Hz.

182 The EEG data were processed using Scan 4.3 software (Neuroscan, USA). Eye-movement
183 artifacts were corrected from the EEG data using a regression procedure implemented in the
184 Neuroscan software (Semlitsch et al., 1986). Data were digitally low-pass filtered with 30 Hz
185 and were epoched into periods of 1400 ms (including 400 ms pre-stimulus time as baseline)
186 time-locked to the onset of the emotional pictures. Trials with artifacts exceeding $\pm 100 \mu\text{V}$
187 were rejected from analysis.

188

189 *2.6 Stress induction*

190 The TSSST task has been shown to be effective in eliciting stress responses (Buchanan et
191 al., 2012, 2009). The task was consisted of a 5-min preparation, a 5-min speech, and a 5-min
192 mental arithmetic. In the preparation period, participants were seated in laboratory room A
193 and instructed to prepare a speech for an imagined scenario in which they were accused of
194 shoplifting and they had to defend themselves in front of the store managers. They were also
195 informed that their performance would be videotaped and evaluated. After preparation,
196 participants were escorted to laboratory room B, where three experimenters (two females) in
197 white coats pretending to be managers were presented. After the speech, participants were
198 asked to complete a mental arithmetic task, which was to subtract serially the number 13
199 starting at 1022 as fast and accurate as possible. Once an error was made, participants had to
200 restart at 1022. Throughout the speech and arithmetic task, participants spoke into a
201 microphone and a video camera in front of the three experimenters. The experimenters

202 communicated with the participant in a neutral manner with a neutral expression and provided
203 no facial or verbal feedback.

204

205 *2.7 Measurement of acute stress response*

206 A wireless chest heart rate transmitter and a wrist monitor recorder (Polar RSC800CX,
207 Polar Electro, Finland) was used for heart rate recording. The heart rate was recorded for 5
208 min at baseline, continuously recorded for 15 min throughout the TSST task, and recorded for
209 3 min each for the four post-stress measurements at 0 min, 20 min, 45 min, and 60 min after
210 the end of the TSST (i.e., post-TSST 1-4). Averaged heart rate across each recording period
211 was obtained from the Polar performance software and was defined as the number of beats
212 per minutes (bpm).

213 Salivette collection tubes (Sarstedt, Rommelsdorf, Germany) were used to collect saliva
214 samples for salivary cortisol levels at baseline and at 0 min (post-TSST 1), 20 min
215 (post-TSST 2), 45 min (post-TSST 3), and 60 min (post-TSST 4) after the end of the TSST.
216 Saliva samples were frozen at -22 °C immediately after collection until analysis and was
217 thawed and centrifuged at 3000 rpm for 5 minutes before analysis. Cortisol concentration was
218 determined by use of a commercial electrochemiluminescence immunoassay (Cobas e 601,
219 Roche Diagnostics, Numbrecht, Germany) with the lower sensitivity being 0.5 nmol/l. Three
220 cortisol values were missing due to insufficient saliva and imputed by combining the group
221 mean and standard deviation for the missing cortisol sample at that time point, and the mean
222 of the available cortisol samples of the participant (Booij et al., 2013).

223

224 *2.8 Questionnaires*

225 Trait anxiety was measured with the Chinese version of the trait subscale of the State-Trait
226 Anxiety Inventory which showed good reliability and validity (STAI-T; Shek, 1993;
227 Spielberger, 1983; Zhang et al., 2012). The STAI-T consists of 20 items with each rated on a
228 four-point Likert scale, with a range of score from 20 to 80. Personality was assessed by the
229 Big Five Personality Scale which included neuroticism, extraversion, openness to experience,

230 agreeableness, and conscientiousness (Donnellan et al., 2006; Zhang et al., 2012). The Big
231 Five Personality Scale consists of 20 statements (4 for each personality dimension) rated on a
232 five-point Likert scale, giving a range of 4–20 for each personality dimension.

233

234 *2.9 Data analysis*

235 For each participant, ERP waveforms were averaged for the negative and neutral pictures
236 separately. The LPP was defined as the mean amplitude in the time window of 400-800 ms at
237 the parietal region (P1, Pz, and P2) where the overall LPP modulation was largest based on
238 visual inspection of the grand average ERPs (see figure 1). To increase stability of the data,
239 the mean LPP amplitude was calculated by averaging the LPP amplitude across the P1, Pz,
240 and P2 electrodes. To validate the valence effect on the LPP amplitude, a one-way
241 repeated-measures ANOVA with valence (negative vs. neutral) as within-subjects factor was
242 performed. Then, the LPP difference waves (Δ LPP) was calculated by subtracting neutral
243 from negative LPPs to serve as an ERP index of emotional processing.

244 For the stress response, a one-way repeated-measures ANOVA was performed on HR with
245 Time as within-subject factor (baseline, during-TSST, post-TSST 1, post-TSST 2, post-TSST
246 3, and post-TSST 4). Then, heart rate increase ratio (Δ HR-ratio) was calculated by dividing
247 the difference between the baseline HR and HR during the TSST task by the baseline HR to
248 index autonomic stress response for each participant.

249 For the cortisol response to stress, a one-way repeated-measures ANOVA was conducted
250 for salivary cortisol with Time as within-subject factor (baseline, post-TSST 1, post-TSST 2,
251 post-TSST 3, and post-TSST 4). Then, cortisol increase ratio (Δ Cort-ratio) was calculated by
252 dividing the difference between baseline cortisol levels and the peak value (which was the
253 cortisol level measured at 20 min after the end of TSST (post-TSST 2)) by the baseline
254 cortisol to index HPA-axis stress response for each participant.

255 Bivariate correlations between Δ LPP amplitude and the stress response measures
256 (Δ HR-ratio and Δ Cort-ratio) were first calculated. Hierarchical regression analyses were then

257 conducted to investigate the predicting value of the Δ LPP amplitude on the stress response.
258 Two separate hierarchical regression analyses were conducted for the autonomic (Δ HHR-ratio)
259 and the endocrine stress response (Δ Cort-ratio) as dependent variables, respectively. In the
260 regression models, control variables including age, sex, years of education, neuroticism, and
261 trait-anxiety which might influence stress response (Egloff et al., 2002; Fox et al., 2010;
262 Kudielka et al., 2009; Wu et al., 2017) were entered in Step 1. Subsequently, the Δ LPP
263 amplitude was entered as predictor in Step 2.

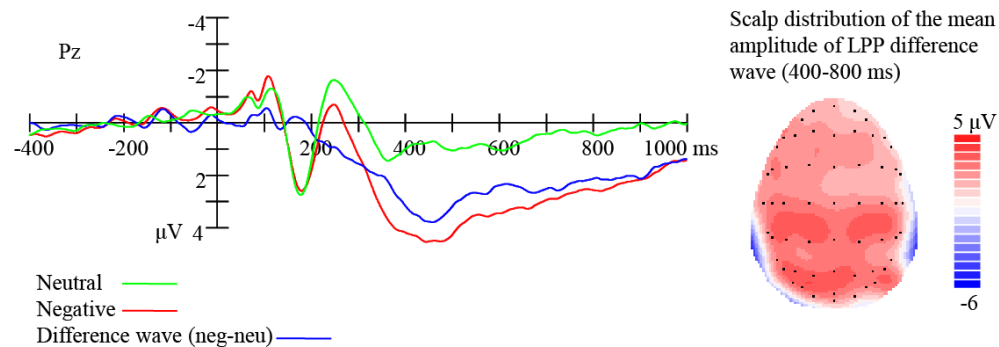
264 Statistical analyses were performed in SPSS 18.0. Greenhouse-Geisser correction was
265 used when sphericity was violated. Partial η^2 was reported as a measure of effect size where
266 appropriate. Post hoc comparisons were conducted using Bonferroni correction to obtain
267 adjusted p -values. All reported p -values were two-tailed, and the level of significance was set
268 at .05.

269

270 3. Results

271 3.1 ERP data

272 The ERP waveforms time-locked to the negative and neutral picture onset and the
273 difference wave (negative minus neutral) are shown in Figure 1. Negative pictures elicited
274 larger LPP amplitudes as compared to neutral pictures ($F(1,51) = 97.274, p < .001$, partial η^2
275 = .652). The mean amplitude (\pm SD) of Δ LPP was $2.87 (\pm 2.12) \mu\text{V}$.



276

277 Figure 1: Left: The ERP waveforms time-locked to the negative and neutral picture onset and
278 the difference (negative minus neutral) wave at Pz. Time 0 represents picture onset. Right:

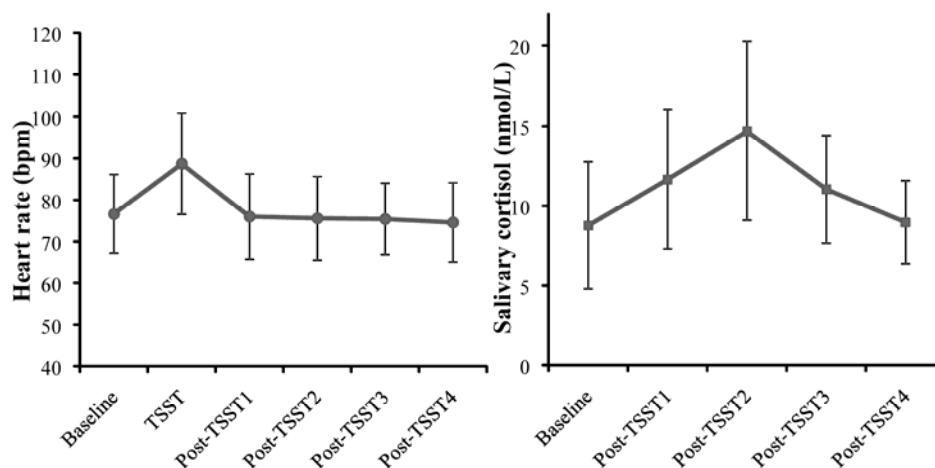
279 The scalp distribution of Δ LPP mean amplitude.

280

281 3.2 Stress responses

282 The means and standard deviation of HR and salivary cortisol levels measured before,

283 during, and after the TSST are depicted in Figure 2.



284

285

286 Figure 2: Mean values and standard deviation of heart rate (left) and salivary cortisol level (right)

287 measured before, during, and after the TSST task. Baseline: measured after 30-min rest; TSST:

288 measured during the TSST task; Post-TSST 1 to 4: measured at 0 min, 20 min, 45 min, and 60 min

289 after the end of the TSST task. Error bars are SD.

290

291 For the HR, the repeated-measures ANOVA revealed a significant main effect of Time

292 ($F(5, 255) = 64.575, p < .001, \text{partial } \eta^2 = .559$). Post hoc analysis indicated significantly

293 higher HR during the TSST task compared to the baseline and post TSST measures (p_s

294 $< .001$). The differences between the baseline HR and the four post-TSST measures were not

295 significant ($p_s > .05$). The mean value (\pm SD) of the Δ HR-ratio was $0.16 (\pm 0.12)$.

296 For the cortisol response, the repeated-measures ANOVA also revealed a significant main

297 effect of Time ($F(4, 204) = 38.463, p < .001, \text{partial } \eta^2 = .430$). Post hoc analysis showed that

298 salivary cortisol levels measured at 0 min, 20 min, and 45 min after the end of the TSST were

299 significantly higher than cortisol levels measured at baseline and higher than 60 min after the

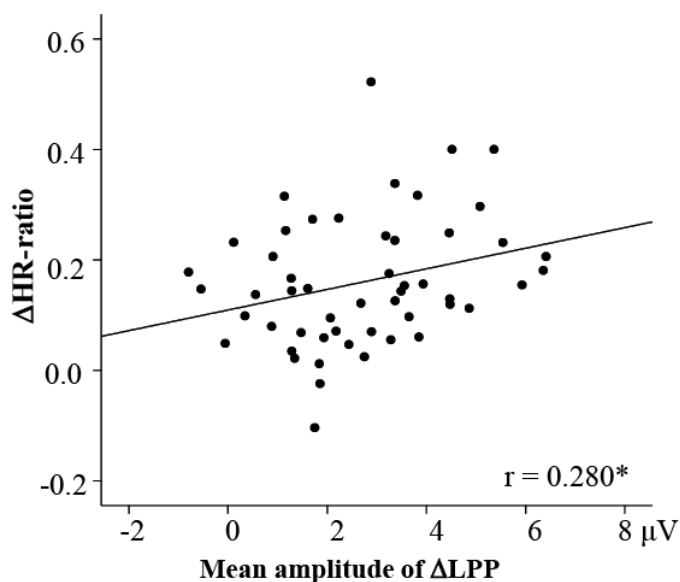
300 end of the TSST ($p_s < .01$). There was no significant difference between cortisol levels at
301 baseline and that measured at 60 min after the end of the TSST ($p > .05$). The cortisol level
302 reached peak at 20 min after the end of the TSST task which was higher than cortisol at 0 min
303 and 45 min after the end of the TSST task ($p_s < .001$). The mean value (\pm SD) of Δ Cort-ratio
304 was 0.82 (\pm 0.86).

305

306 3.3 Prediction of stress responses by emotional ERP measure

307 Pearson correlation analysis showed that the Δ LPP amplitude was positively correlated
308 with Δ HR-ratio ($r = 0.280$, $p < .05$, Figure 3), but not with Δ Cort-ratio ($r = 0.161$, $p = 0.253$).

309



310

311 Figure 3: Scatter plot of the bivariate correlation between the Δ LPP amplitude and the heart rate
312 response to acute psychosocial stress (Δ HR-ratio) ($n = 52$). The mean amplitude of Δ LPP
313 calculated as the mean amplitude of the negative minus neutral trials. The heart rate stress
314 response (Δ HR-ratio) was calculated as the difference between the baseline HR and HR during the
315 TSST task divided by baseline value. *: $p < .05$.

316

317 Table1 shows the results of the hierarchical regression analysis for the HR response to stress with
318 the Δ LPP amplitude being predictor and Δ HR-ratio being outcome. Model 2 explained a

319 significant amount of the variance in the HR response to the acute psychosocial stressor
320 (Δ HR-ratio). The amplitude of Δ LPP was a significant predictor after controlling for age, sex,
321 years of education, neuroticism, and trait-anxiety. In contrast, the hierarchical regression model for
322 the cortisol response to stress (Δ Cort-ratio) was not significant and the amplitude of Δ LPP could
323 not predict the Δ Cort-ratio ($p > 0.10$).

324 Table 1

325 Hierarchical regression analyses predicting HR response to the stressor.

| Predictors | β | t | R2 | Δ R2 |
|------------------------|---------|------|-------|-------------|
| Model 1 | | | 0.134 | |
| Model 2 | | | 0.230 | 0.096* |
| Sex | 0.121 | 0.9 | | |
| Age | 0.205 | 1.6 | | |
| Neuroticism | -0.107 | <1 | | |
| Trait Anxiety | -0.268 | -1.7 | | |
| Δ LPP amplitude | 0.313 | 2.4* | | |

326 Note: The outcome measure was the Δ HR-ratio during the TSST task (the difference between the
327 baseline HR and HR during the TSST task divided by the baseline HR). Δ LPP amplitude was the
328 averaged amplitude of LPP towards negative relative to neutral pictures at the parietal region (P1,
329 Pz, and P2). Sex, age, neuroticism, and trait-anxiety were included in Model 1 and the Δ LPP
330 amplitude was further included in Model 2. *: $p < .05$.

331

332 4. Discussion

333 The present study aimed at investigating the relationship between neurocognitive measure
334 of emotional processing (i.e., LPP) and physiological responses to acute stress. The results
335 showed that negative pictures elicited larger LPP amplitudes as compared with neutral
336 pictures, and the TSST successfully induced acute ANS and HPA responses (as reflected by
337 increased HR and cortisol, respectively). More importantly, increased LPP amplitudes
338 towards negative relative to neutral stimuli during the non-stressful state significantly
339 predicted HR response but not cortisol response to acute psychosocial stress (i.e., the TSST).

340 We found that enhanced LPP amplitudes to negative compared to neutral pictures in a
341 non-stressful state were associated with higher HR responses to acute psychosocial stress. The
342 LPP has been proposed to indicate sustained attention towards and elaborative processing of
343 motivationally or emotionally salient stimuli (Cuthbert et al. 2000; Schupp et al. 2000; also see
344 Hajcak et al. 2010 for review). Autonomic stress response (i.e., HR response) has been
345 suggested to launch fast fight/flight reaction and initial effort to cope with stressors, yet
346 enhanced response be related to increased health risks such as hypertension, coronary heart
347 disease, diabetes (Egloff et al., 2002; Peters et al., 1998). The current finding showed that
348 individuals who tend to engage more attention to process negative information would also
349 recruit the autonomic system to a higher degree in order to deal with a stressful situation,
350 which in the long-run might increase the risks to develop stress-related health problems.

351 The positive correlation we found can be explained in three ways. First, with a
352 prospective design, it adds to the evidence that negative processing bias plays a causal role in
353 stress vulnerability (e.g., Fox et al., 2010). For example, prior fMRI and EPR studies found
354 that relatively exaggerated amygdala reactivity and increased LPP amplitude towards negative
355 stimuli before trauma exposure were predictive to posttraumatic symptoms in response to
356 traumatic stressors (Admon et al., 2009; Lobo et al., 2014; McLaughlin et al., 2014; Swartz et
357 al., 2015). Egloff and colleagues (2002) found that attentional bias to negative stimuli
358 measured by response times positively predicted HR and blood pressure responses to an
359 evaluated speech task in females. Characterized by paying more attention to negative
360 environmental cues, individuals may interpret the stressor in a more negative way and in turn
361 be more stressed in the TSST task, as reflected in a higher autonomic response. Second,
362 although only negative pictures were used in our experiment, the LPP can be elicited by
363 arousing stimuli regardless of its valence (Cuthbert et al., 2000; Hajcak et al., 2010; Schupp et
364 al., 2000). Therefore, it is possible that more sustained attentional engagement with
365 emotionally arousing information rather than biased processing of negatively valence
366 information per se may have led to a higher arousal response in the stressful situation,
367 revealed as an exaggerated heart rate increase. In line with this explanation, literature has

368 shown that attentional bias towards both angry and happy faces was predictive to PTSD
369 symptoms (Schäfer et al., 2016).

370 Since our findings are correlational in nature, a third possible explanation is common
371 underlying neural mechanisms of emotional information processing and autonomic stress
372 response. Prior studies using simultaneous fMRI and EEG recording (Liu et al., 2012;
373 Sabatinelli et al. 2007; 2013), genetic analysis, and pharmacological manipulation (de Rover
374 et al., 2012) have suggested that the increased LPP amplitude reflects amygdala modulation,
375 which plays an important role in autonomic stress response (e.g., Fortaleza et al., 2012). Thus,
376 a generally hypersensitive amygdala may explain both high amplitude of LPP towards
377 negative stimuli and high HR response to stress.

378 In contrast to the autonomic stress response, we found that attentional processing of
379 negative stimuli was not a significant predictor of cortisol response to acute psychological
380 stress. These results are consistent with previous behavioral studies, in which the negative
381 attentional bias measured by reaction times was related to HR and blood pressure responses
382 (Egloff et al., 2002) but not to cortisol response (Fox et al., 2010) to a TSST-liked public
383 speech stressor. Previous literature showed that the ANS and HPA stress response systems to
384 some degree have different regulating neural circuits. The central nucleus of the amygdala
385 was suggested to preferentially regulate the autonomic stress response, whereas the medial
386 and basolateral amygdala nuclei weight in more on HPA axis response modulation (for a
387 review, see Ulrich-Lai and Herman, 2009). In emotional information processing, the central
388 nucleus was found being prominent in attentional modulation on the visual system
389 (Krolak-Salmon et al., 2004), which is also a neural source of the LPP (Liu et al., 2012;
390 Sabatinelli et al., 2007; 2013). Future research should use imaging techniques with higher
391 space-resolution (e.g., fMRI and MEG) to further explore the neural circuits of emotion
392 processing in predicting physiological stress response.

393 Several limitations to the present study should be noted. First, only healthy young adults
394 were recruited. It should be tested whether current finding can be generalized to other age
395 groups. Second, we investigated females of normal menstrual cycles before and after their

396 ovulation period but did not measure gonadal hormones to determine their menstrual cycle
397 stages. Future research can combine such objective measures to test whether current finding
398 can be generalized to different menstrual cycle stages in female. Third, we only focused on
399 negative emotional neurocognitive processing here. Future studies should address whether
400 positive and negative emotional processing have different predictive power on stress
401 responses. Last but not least, the passive viewing paradigm we used here is relatively simple
402 and no behavioural data is reported. More studies with delicate experimental design should be
403 applied to replicate the current findings. Nevertheless, it is worthwhile to mention that the
404 LPPs in a free-viewing context in the absence of behavioural outputs could be utilized as a
405 sensitive biomarker of emotion processing in clinical populations with impaired motor
406 function, such as Alzheimer's disease and other neurological disorders.

407 To summarize, neural processing of negative emotional information reflected by the
408 amplitude of LPP during non-stressful condition showed a positive correlation with HR
409 response toward an acute psychological stressor among healthy young adults. The present
410 findings indicate that the neural processing of negative emotional information can be used as
411 a biomarker of individual autonomic stress reactivity.

412

413

414 **Reference**

- 415 Admon, R., Lubin, G., Stern, O., Rosenberg, K., Sela, L., Ben-Ami, H., Hendler, T., 2009.
- 416 Human vulnerability to stress depends on amygdala's predisposition and hippocampal
- 417 plasticity. *Proc. Natl. Acad. Sci.* 106(33), 14120-14125.
- 418 <https://doi.org/10.1073/pnas.0903183106>
- 419 Booij, S.H., Bouma, E.M.C., De Jonge, P., Ormel, J., Oldehinkel, A.J., 2013. Chronicity of
- 420 depressive problems and the cortisol response to psychosocial stress in adolescents:
- 421 The TRAILS study. *Psychoneuroendocrinology.* 38(5), 659-666.
- 422 <https://doi.org/10.1016/j.psyneuen.2012.08.004>
- 423 Buchanan, T.W., Bagley, S.L., Stansfield, R.B., Preston, S.D., 2012. The empathic,
- 424 physiological resonance of stress. *Soc. Neurosci.* 7(2), 191-201.
- 425 <https://doi.org/10.1080/17470919.2011.588723>
- 426 Buchanan, T.W., Tranel, D., Kirschbaum, C., 2009. Hippocampal damage abolishes the
- 427 cortisol response to psychosocial stress in humans. *Horm. Behav.* 56(1), 44-50.
- 428 <https://doi.org/10.1016/j.yhbeh.2009.02.011>
- 429 Cunningham, W.A., Kirkland, T., 2014. The joyful, yet balanced, amygdala: Moderated
- 430 responses to positive but not negative stimuli in trait happiness. *Soc. Cogn. Affect.*
- 431 *Neurosci.* 9(6), 760-766. <https://doi.org/10.1093/scan/nst045>
- 432 Cuthbert, B.N., Schupp, H.T., Bradley, M.M., Birbaumer, N., Lang, P.J., 2000. Brain
- 433 potentials in affective picture processing: Covariation with autonomic arousal and
- 434 affective report. *Biol. Psychol.* 52, 95-111.
- 435 [https://doi.org/10.1016/S0301-0511\(99\)00044-7](https://doi.org/10.1016/S0301-0511(99)00044-7)
- 436 de Kloet, E.R., Joëls, M., Holsboer, F., 2005. Stress and the brain: from adaptation to disease.
- 437 *Nat. Rev. Neurosci.* 6(6), 463-475. <https://doi.org/10.1038/nrn1683>
- 438 De Rover, M., Brown, S.B.R.E., Boot, N., Hajcak, G., Van Noorden, M.S., Van Der Wee,
- 439 N.J.A., Nieuwenhuis, S., 2012. Beta receptor-mediated modulation of the late positive
- 440 potential in humans. *Psychopharmacology (Berl).* 219(4), 971-979.

- 441 <https://doi.org/10.1007/s00213-011-2426-x>
- 442 Dickerson, S.S., Kemeny, M.E., 2004. Acute stressors and cortisol responses: A theoretical
443 integration and synthesis of laboratory research. *Psychol. Bull.* 130(3), 355-391.
444 <https://doi.org/10.1037/0033-2909.130.3.355>
- 445 Donnellan, M.B., Oswald, F.L., Baird, B.M., Lucas, R.E., 2006. The Mini-IPIP scales:
446 Tiny-yet-effective measures of the Big Five factors of personality. *Psychol. Assess.*
447 18(2), 192–203. <https://doi.org/10.1037/1040-3590.18.2.192>
- 448 Egloff, B., Wilhelm, F.H., Neubauer, D.H., Mauss, I.B., Gross, J.J., 2002. Implicit Anxiety
449 Measure Predicts Cardiovascular Reactivity to an Evaluated Speaking Task. *Emotion.*
450 2(1), 3-11. <https://doi.org/10.1037/1528-3542.2.1.3>
- 451 Fortaleza, E.A.T., Scopinho, A.A., Corrêa, F.M.A., 2012. β -Adrenoceptors in the medial
452 amygdaloid nucleus modulate the tachycardiac response to restraint stress in rats.
453 *Neuroscience.* 227, 170-179. <https://doi.org/10.1016/j.neuroscience.2012.09.048>
- 454 Fox, E., Cahill, S., Zougkou, K., 2010. Preconscious Processing Biases Predict Emotional
455 Reactivity to Stress. *Biol. Psychiatry.* 67(4), 371-377.
456 <https://doi.org/10.1016/j.biopsych.2009.11.018>
- 457 Gupta, R., 2019. Positive emotions have a unique capacity to capture attention. *Prog. Brain*
458 *Res.* 247, 23–46. <https://doi.org/10.1016/BS.PBR.2019.02.001>
- 459 Hajcak, G., Macnamara, A., Olvet, D.M., 2010. Event-related potentials, emotion, and
460 emotion regulation: An integrative review. *Dev. Neuropsychol.* 35(2), 129-155.
461 <https://doi.org/10.1080/87565640903526504>
- 462 Hot, P., Saito, Y., Mandai, O., Kobayashi, T., Sequeira, H., 2006. An ERP investigation of
463 emotional processing in European and Japanese individuals. *Brain Res.*
464 <https://doi.org/10.1016/j.brainres.2006.09.020>
- 465 Kaldewaij, R., Koch, S., Zhang, W., Hashemi, M. M., Klumpers, F., Roelofs, K., 2019.
466 Frontal Control Over Automatic Emotional Action Tendencies Predicts Acute Stress
467 Responsivity. *Biological psychiatry. Cogn. Neurosci. Neuroimaging*, 4(11), 975–983.
468 <https://doi.org/10.1016/j.bpsc.2019.06.011>

- 469 Keil, A., Bradley, M.M., Hauk, O., Rockstroh, B., Elbert, T., Lang, P.J., 2002. Large-scale
470 neural correlates of affective picture processing. *Psychophysiology*. 39(5), 641-649.
471 <https://doi.org/10.1017.S0048577202394162>
- 472 Kirschbaum, C., Kudielka, B.M., Gaab, J., Schommer, N.C., Hellhammer, D.H., 1999. Impact
473 of gender, menstrual cycle phase, and oral contraceptives on the activity of the
474 hypothalamus-pituitary-adrenal axis. *Psychosom. Med.* 61, 154-162.
475 <https://doi.org/10.1097/00006842-199903000-00006>
- 476 Kirschbaum, C., Pirke, K.M., Hellhammer, D.H., 1993. The 'Trier Social Stress Test'--a tool
477 for investigating psychobiological stress responses in a laboratory setting. 28(1-2),
478 76-81. *Neuropsychobiology*. <https://doi.org/10.1159/000119004>
- 479 Krolak-Salmon, P., Hénaff, M.A., Vighetto, A., Bertrand, O., Mauguière, F., 2004. Early
480 amygdala reaction to fear spreading in occipital, temporal, and frontal cortex: A depth
481 electrode ERP study in human. *Neuron*. 42, 665-676.
482 [https://doi.org/10.1016/S0896-6273\(04\)00264-8](https://doi.org/10.1016/S0896-6273(04)00264-8)
- 483 Kudielka, B.M., Buske-Kirschbaum, A., Hellhammer, D.H., Kirschbaum, C., 2004. HPA axis
484 responses to laboratory psychosocial stress in healthy elderly adults, younger adults,
485 and children: Impact of age and gender. *Psychoneuroendocrinology*. 29(1), 83-98.
486 [https://doi.org/10.1016/S0306-4530\(02\)00146-4](https://doi.org/10.1016/S0306-4530(02)00146-4)
- 487 Kudielka, B.M., Hellhammer, D.H., Wüst, S., 2009. Why do we respond so differently?
488 Reviewing determinants of human salivary cortisol responses to challenge.
489 *Psychoneuroendocrinology*. 34, 2-18. <https://doi.org/10.1016/j.psyneuen.2008.10.004>
- 490 Kudielka, B.M., Kirschbaum, C., 2005. Sex differences in HPA axis responses to stress: a
491 review. *Biol. Psychol.* 69(1), 113-132.
492 <https://doi.org/10.1016/j.biopsycho.2004.11.009>
- 493 Liu, Y., Huang, H., McGinnis-Deweese, M., Keil, A., Ding, M., 2012. Neural Substrate of the
494 Late Positive Potential in Emotional Processing. *J. Neurosci.* 32(42), 14563-14572.
495 <https://doi.org/10.1523/jneurosci.3109-12.2012>

- 496 Lobo, I., David, I.A., Figueira, I., Campagnoli, R.R., Volchan, E., Pereira, M.G., de Oliveira,
497 L., 2014. Brain reactivity to unpleasant stimuli is associated with severity of
498 posttraumatic stress symptoms. *Biol. Psychol.* 103, 233-241.
499 <https://doi.org/10.1016/j.biopsycho.2014.09.002>
- 500 Lupien, S.J., Maheu, F., Tu, M., Fiocco, A., Schramek, T.E., 2007. The effects of stress and
501 stress hormones on human cognition: Implications for the field of brain and
502 cognition. *Brain Cogn.* <https://doi.org/10.1016/j.bandc.2007.02.007>
- 503 Lupien, S.J., McEwen, B.S., Gunnar, M.R., Heim, C., 2009. Effects of stress throughout the
504 lifespan on the brain, behaviour and cognition. *Nat. Rev. Neurosci.* 10(6), 434-445.
505 <https://doi.org/10.1038/nrn2639>
- 506 McEwen, B.S., 2004. Protection and damage from acute and chronic stress: allostasis and
507 allostatic overload and relevance to the pathophysiology of psychiatric disorders.
508 *Ann. N. Y. Acad. Sci.* 1032, 1-7. <https://doi.org/10.1196/annals.1314.001>
- 509 McLaughlin, K.A., Busso, D.S., Duys, A., Green, J.G., Alves, S., Way, M., Sheridan, M.A.,
510 2014. Amygdala response to negative stimuli predicts PTSD symptom onset following
511 a terrorist attack. *Depress. Anxiety.* 31(10), 834-842. <https://doi.org/10.1002/da.22284>
- 512 Murray, E.A., 2007. The amygdala, reward and emotion. *Trends Cogn. Sci.* 11(11), 489-497.
513 <https://doi.org/10.1016/j.tics.2007.08.013>
- 514 Peters, M.L., Godaert, G.L.R., Ballieux, R.E., Van Vliet, M., Willemsen, J.J., Sweep, F.C.G.J.,
515 Heijnen, C.J., 1998. Cardiovascular and endocrine responses to experimental stress:
516 Effects of mental effort and controllability. *Psychoneuroendocrinology.* 23, 1-17.
517 [https://doi.org/10.1016/S0306-4530\(97\)00082-6](https://doi.org/10.1016/S0306-4530(97)00082-6)
- 518 Pitman, R. K., Rasmusson, A. M., Koenen, K. C., Shin, L. M., Orr, S. P., Gilbertson, M. W.,
519 Milad, M. R., Liberzon, I., 2012. Biological studies of post-traumatic stress disorder.
520 *Nat. Rev. Neuroscience,* 13(11), 769–787. <https://doi.org/10.1038/nrn3339>
- 521 Sabatinelli, D., Lang, P.J., Keil, A., Bradley, M.M., 2007. Emotional perception: Correlation
522 of functional MRI and event-related potentials. *Cereb. Cortex.* 17, 1085–1091.
523 <https://doi.org/10.1093/cercor/bhl017>

- 524 Schäfer, J., Bernstein, A., Zvielli, A., Höfler, M., Wittchen, H.U., Schönfeld, S., 2016.
525 Attentional bias temporal dynamics predict posttraumatic stress symptoms: A
526 prospective-longitudinal study among soldiers. *Depress. Anxiety*. 33(7), 630-639.
527 <https://doi.org/10.1002/da.22526>
- 528 Schupp, H.T., Cuthbert, B.N., Bradley, M.M., Cacioppo, J.T., Tiffany, I., Lang, P.J., 2000.
529 Affective picture processing: The late positive potential is modulated by motivational
530 relevance. *Psychophysiology*. 37, 257–261.
531 <https://doi.org/10.1017/S0048577200001530>
- 532 Semlitsch, H. V., Anderer, P., Schuster, P., Presslich, O., 1986. A Solution for Reliable and
533 Valid Reduction of Ocular Artifacts, Applied to the P300 ERP. *Psychophysiology*.
534 23,695–703. <https://doi.org/10.1111/j.1469-8986.1986.tb00696.x>
- 535 Sergerie, K., Chochol, C., Armony, J.L., 2008. The role of the amygdala in emotional
536 processing: A quantitative meta-analysis of functional neuroimaging studies.
537 *Neurosci. Biobehav. Rev.* 32(4), 811-830.
538 <https://doi.org/10.1016/j.neubiorev.2007.12.002>
- 539 Shek, D.T.L., 1993. The Chinese version of the State-Trait Anxiety Inventory: Its
540 relationship to different measures of psychological well-being. *J. Clin. Psychol.* 49,
541 349-358.
542 [https://doi.org/10.1002/1097-4679\(199305\)49:3<349::AID-JCLP2270490308>3.0.C](https://doi.org/10.1002/1097-4679(199305)49:3<349::AID-JCLP2270490308>3.0.CO;2-J)
543 [O;2-J](https://doi.org/10.1002/1097-4679(199305)49:3<349::AID-JCLP2270490308>3.0.CO;2-J)
- 544 Sherin, J. E., Nemeroff, C. B., 2011. Post-traumatic stress disorder: the neurobiological
545 impact of psychological trauma. *Dialogues Clin. Neurosci.* 13(3), 263–278.
546 <https://doi.org/10.31887/DCNS.2011.13.2/jsherin>
- 547 Spielberger, C.D., 1983. Manual for the State-Trait Anxiety Inventory (STAI Form Y),
548 Consulting Psychologists Palo Alto.
549 <https://doi.org/10.1002/9780470479216.corpsy0943>
- 550 Swartz, J.R., Knodt, A.R., Radtke, S.R., Hariri, A.R., 2015. A neural biomarker of
551 psychological vulnerability to future life stress. *Neuron*. 85(3), 505-511.

552 <https://doi.org/10.1016/j.neuron.2014.12.055>

553 Ulrich-Lai, Y.M., Herman, J.P., 2009. Neural regulation of endocrine and autonomic stress
554 responses. *Nat. Rev. Neurosci.* 10(6), 397-409. <https://doi.org/10.1038/nrn2647>

555 Vandewalle, G., Middleton, B., Rajaratnam, S.M.W., Stone, B.M., Thorleifsdottir, B., Arendt,
556 J., Dijk, D.J., 2007. Robust circadian rhythm in heart rate and its variability:
557 Influence of exogenous melatonin and photoperiod. *J. Sleep Res.* 16(2), 148-155.
558 <https://doi.org/10.1111/j.1365-2869.2007.00581.x>

559 Vuilleumier, P., 2005. How brains beware: Neural mechanisms of emotional attention. *Trends*
560 *Cogn. Sci.* 9, 585–594 <https://doi.org/10.1016/j.tics.2005.10.011>

561 Wu, J., Sun, X., Wang, L., Zhang, L., Fernández, G., Yao, Z., 2017. Error consciousness
562 predicts physiological response to an acute psychosocial stressor in men.
563 *Psychoneuroendocrinology.* 83, 84-90.
564 <https://doi.org/10.1016/j.psyneuen.2017.05.029>

565 Zhang, J.-F., Shi, Z.-B., Zhao, P.-L., Wang, L., 2012. Posttraumatic growth and related factors
566 in junior middle school students after the Wenchuan earthquake. [Posttraumatic
567 growth and related factors in junior middle school students after the Wenchuan
568 earthquake.]. *Chinese Ment. Heal. J.* 26(5), 357–362.

569

570

571

572

573

574

575

576

577

578

579 **Acknowledgement**

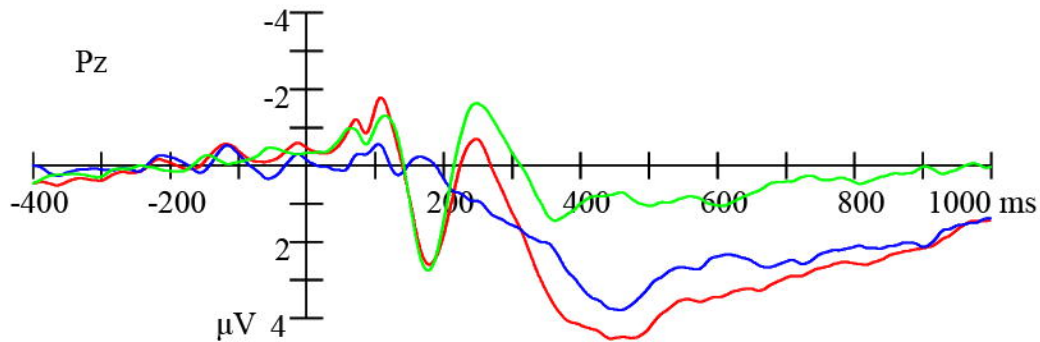
580 This work was supported by the National Natural Science Foundation of China (31771246,

581 31530031), the State Scholarship Fund of China (201604910560), the Natural Science

582 Foundation of Shenzhen University (2019076), and Guangdong Innovative and

583 Entrepreneurial Research Team Program. We acknowledge Xiaofang Sun and Wenyu Li for

584 their help in data collection.



Neutral ———

Negative ———

Difference wave (neg-neu) ———

Scalp distribution of the mean amplitude of LPP difference wave (400-800 ms)

