

A multimodal biomarker predicts dissemination of bronchial carcinoid

Authors:

E.M.B.P. Reuling (MD)^{1,6}, D.D. Naves (BSc)³, E. Thunnissen (MD, PhD)³, P.C. Kortman³, M.A.M.B. Broeckaert³, P.W. Plaisier (MD, PhD)⁶, C. Dickhoff (MD, PhD)^{1,2}, J.M.A. Daniels (MD, PhD)⁴ and T. Radonic (MD, PhD)^{3,5}.

Affiliations:

Department of ¹Surgery, ²Cardiothoracic Surgery, ³Pathology and ⁴Pulmonary Diseases, Amsterdam University Medical Center, VU University Amsterdam, ⁵Cancer Centre Amsterdam; De Boelelaan 1117, 1081 HV Amsterdam, the Netherlands and Department of ⁶Surgery, Albert Schweitzer Hospital, Albert Schweitzerplaats 25, 3318 AT Dordrecht, the Netherlands

Corresponding author

T. Radonic
Department of pathology
Amsterdam University Medical Center, location VUMC
De Boelelaan 1117
1081 HV Amsterdam, The Netherlands
E-mail: t.radonic@amsterdamumc.nl

Disclosures

None

Key words

Typical carcinoid; atypical carcinoid; lymph node metastases, distant metastases; OTP; CD44; P16; Rb; Ki-67; mitotic count, prognosis.

Total word count

3103

Abstract

Introduction: The extensive loss of lung parenchyma is a drawback of anatomical resection in bronchial carcinoids. Endobronchial therapy (EBT) has emerged as a safe and effective minimally invasive tissue sparing alternative for small intraluminal tumors. Currently, therapeutic decision making in patients with bronchial carcinoid is mainly based on tumor morphology and patient characteristics. The availability of more accurate biomarkers might help clinicians in selecting low-risk tumors for EBT. Therefore, we investigated radiological (tumor diameter), morphometric (mitotic index) and immunohistochemical (OTP, CD44, Ki-67, Rb and P16) markers as predictors of dissemination.

Material and methods: Patients referred to Amsterdam University Medical Centers with available histology were included. Clinical and morphological characteristics relevant for classification such as tumor diameter, mitotic count (MAI) and prognostic immunohistochemical markers as Ki-67, P16, Rb, Orthopedia homebox (OTP) and CD44 were analyzed.

Results: In a cohort of 171 patients, the vast majority were curatively treated with either EBT ($n=61$, 36%) or surgery ($n=103$, 60%). Seven (4%) patients presented with distant metastases at diagnosis. TC was diagnosed in 112 (65%) and AC in 59 (35%) patients. Nine (15%) patients treated with EBT had a local recurrence of disease during follow up and none developed lymph node or distant metastasis. Of all surgically treated patients, 13 (13%) had level 1 or 2 lymph node metastases. Additional 13 (13%) patients developed distant metastases, 11 (85%) were AC and 2 (15%) TC. Patients with tumor stage IA (tumor diameter ≤ 1 cm) irrespective of tumor classification or immunohistochemical results did not develop distant metastases. Patients with typical carcinoid (< 2 mitoses per 2 mm^2) stage \geq IB with Ki67 $< 5\%$ and positive CD44 did not develop distant metastases either. All patients with atypical carcinoid (≥ 2 mitoses 2 mm^2), Ki-67 of $\geq 5\%$ ($p < 0.000$) and loss of CD44 ($p < 0.0001$) developed distant metastases. Tumors with stage \geq IB and either ≥ 2 mitoses, Ki-67 $> 5\%$ or loss of CD44 metastasized occasionally (11%).

Conclusion: Adding tumor diameter, CD44 and Ki-67 to the widely used TC/AC classification, provides a multimodal biomarker that better stratifies patients in prognostically favorable and unfavorable categories than current standards. These findings enable risk stratification allowing a tailored treatment approach for patients with bronchial carcinoid.

Introduction

Pulmonary carcinoid tumors are a subset of neuroendocrine tumors (NETs) and represent 1-2% of all primary lung malignancies with an incidence of 0.2-2 per 100,000 per year (1). Bronchial carcinoid tumors are predominantly intraluminal, slow growing tumors. Surgical resection is the gold standard for treatment (2). A drawback of anatomical resection in centrally located tumors is the extensive loss of lung parenchyma. Endobronchial therapy (EBT) has emerged as a safe and effective minimally invasive tissue sparing alternative for small intraluminal tumors (3, 4) . To date, no randomized controlled trials have compared EBT with surgery for small bronchial carcinoids. This lack of evidence understandably impedes the implementation of EBT. However, an adequately powered RCT would be time consuming because of the low incidence and the low expected number of events (local or distant recurrences). In addition, the indolent growth of carcinoid tumors requires at least 10 years of follow-up. Accurate surrogate biomarkers may be of great help in this setting. Identification of patients with low-risk carcinoids, that do not disseminate, will support the selection of patients suitable for local treatment (surgery or EBT). In addition, lifelong follow-up after local treatment may be unnecessary for such low-risk patients. Conversely, identification of subjects at risk for dissemination may result in more aggressive treatment and/or follow-up strategy.

The best known biomarker in carcinoid is the mitotic index, which is part of the current WHO classification (5). The distinction between typical (TC) and atypical carcinoid (AC) is based on mitotic count and dot-like necrosis in the tumor (1). A tumor with 0-2 mitosis per 2 mm² will be classified as TC and ≥ 2 mitosis per 2 mm² or necrosis as AC. AC has poorer prognosis and a higher tendency to disseminate (6). Although lymph node involvement and distant metastases predominantly occur in AC, dissemination can also occur in TC (7). In addition, histologic classification in TC and AC is imprecise on small biopsies and should be interpreted with caution (8). Evidently, better biomarkers are required in order to predict prognosis and optimize treatment. Recent studies found additional immunohistochemical markers such as orthopedia homeobox (OTP), CD44 and Ki-67 to have prognostic value in bronchial carcinoid tumors (9) (10, 11) (12, 13). Two other immunohistochemical markers are potential predictors in high grade neuroendocrine carcinoma of the lung, namely retinoblastoma protein (Rb) and P16 (14-16). Most of them are transcription factors, which either activate or repress the gene transcription. Inappropriate expression of these transcription factors might lead to unfavorable cell division, cell growth, or cell death (17, 18).

In the current study, we investigated radiological (tumor diameter), morphometric (mitotic index) and immunohistochemical (OTP, CD44, Ki-67, Rb and P16) markers as predictors of dissemination in a large

single institution cohort of patients who underwent treatment for bronchial carcinoid, predominantly with curative intent.

Materials and Methods

1.1 Study design and methods

After approval by the Institutional Review Board (Medical Ethics Review Committee of Amsterdam UMC IRB00002991), patients referred to our tertiary referral center between 1991 and 2019 for treatment of bronchial carcinoid with sufficient tissue for additional immunohistochemistry were included. Patients were selected for EBT or surgery based on detailed information provided by chest CT scans and bronchoscopies. Those patients with evident and significant extraluminal growth, lymph node involvement or multifocal/disseminated disease on CT scan were excluded from EBT and referred for surgery. To detect residual disease, control bronchoscopy and CT scan were typically planned 6 weeks after EBT. Residual disease was confirmed with a biopsy and patients with extensive residual disease were treated with surgery. In patients with minimal residual disease, EBT was repeated if deemed feasible. In the absence of residual disease, patients were followed with annual CT scan and bronchoscopy.

2.1.1 Case evaluation and definitive diagnosis

All cases were analyzed and the diagnosis was confirmed by two pathologists (TR & ET) specialized in lung pathology. Twenty cases were evaluated by both pathologists for concordance testing, discordant cases were discussed during microscope evaluation. Biopsies and surgical tumor specimen were digitally measured to define pathologic tumor size (pT).

2.1.2 Mitotic count and presence of necrosis

Mitotic count and necrosis were scored by a specialized pathologic laboratory technician (MB) as performed in daily diagnostic routine of the pathology ward. In short, the whole slide was first explored for mitotic hotspots and the mitotic count was performed in the hotspot as described before (19). Necrosis was scored by two lung pathologists (TR & ET).

2.1.3 Immunohistochemistry

Immunohistochemistry for Ki-67, Rb, P16, OTP and CD44 was performed. Clones and conditions are presented in Supplementary Table 5. Immunohistochemical staining intensity was scored using the H-score (range 0–300). In short, the percentage of cells at each staining intensity level (0, 1+, 2+, and 3+) was scored, and H-score was calculated using the following formula: $1 \times (\% \text{ cells } 1+) + 2 \times (\% \text{ cells } 2+) + 3 \times (\% \text{ cells } 3+)$ (20). In markers with overall high expression (OTP, CD44, Rb), the staining intensity

of <30 was considered to be negative (21). In markers without or low expression (p16), any staining level was scored as positive. The Ki-67 scoring consisted of estimation of percentage of positive cells in a hotspot region after scanning the whole slide. The highest recorded value was taken into account, as described before (22). The staining intensity of the immunohistochemical markers were analyzed between four prognostic groups (curative treated, recurrence of disease after EBT, lymph node involvement and distant metastases).

3.1 Statistical analysis

The statistical analyses and calculations were performed with SPSS 26.0 (IBM Corp., Armonk, N.Y., USA). Chi-square and Fisher tests were applied for comparison of qualitative variables. The area under receiver operating characteristics curve (ROC), abbreviated as AUC, was calculated to identify the discriminatory ability of immunohistochemical markers and mitotic index for recurrence of disease after EBT, lymph node involvement and distant metastases. The Pearson Correlation was used to measure the relationships between pairs of continuous variables (mitotic index and proliferation index). A binary regression analysis was performed to identify independent risk factors for distant metastases. Survival analysis was performed using the Kaplan–Meier method. A *p*-value <0.05 denoted statistical significance.

Results

3.1 patient characteristics

A total of 171 patients were included in the present study. The median age was 49 (interquartile range [IQR] 36-61) and 97 (56.7%) patients were female. TC was diagnosed in 112 (65.5%) and AC in 59 (34.5%) patients (differences in biomarker expression between TC and AC are attached in supplementary Table 3 & 4). A total of 164 (95.9%) patients underwent local treatment with curative intent with either definitive EBT (*n*=61, 35.7%) or surgery (*n*=103, 60.2%). Only 9 patients treated with EBT had a local recurrence of disease. Three patients (33.3%) were treated with EBT (2 patients refused surgery and 1 recurrence was curatively treated with EBT) and 6 (66.6%) were referred for surgical resection. No patients treated with EBT developed distant metastases (follow-up time 75 months (IQR 43-120)). A total of 37 (35.9%) of all 103 surgically resected patients (median age 46, IQR 35-59 years) were directly referred for surgery. The remaining 66 (64.1%) patients were initially treated with EBT, but needed surgical resection. Presence of lymph node involvement was detected in 13 patients (12.6%). Also, 13 patients (12.6%) developed distant metastases and most of these metastasized tumors were proven to be AC (11/13, 84.6%). Seven patients (4.1%) presented with distant metastases at diagnosis (liver *n*=2, pleura *n*=2, dura mater *n*=1, skin *n*=1 and adrenal gland *n*=1) (Table 1).

3.2 Mitotic index

Diagnostic material of patients with distant metastases showed an increased mitotic rate (mean 5.5, standard deviation (SD) \pm 5.3) compared to the samples of curatively treated patients (1.2; SD \pm 1.7). A mitotic count of at least 2 per 2 mm² ($p=0.000$) was associated with development of distant metastases (AUC 0.76, $p=0.002$) (Figure 2A).

3.3 Ki-67

The mean Ki-67 proliferation index of all cases in this cohort was 2.8% (SD \pm 3.8). Ki-67 tended to be higher in AC than in TC (4% (SD \pm 5.0) vs 2% (SD \pm 3.0), $p=0.06$) (supplementary Table 3). Mitotic count and Ki-67 showed no correlation ($r=0.1$, $p=0.22$) (Supplementary Figure 4). A relatively high Ki-67 index was observed in patients with N1 and N2 lymph node involvement (3.2%; SD \pm 3.0) and distant metastases (8.6%; SD \pm 6.4) compared to curative treated patients (1.9%; SD \pm 2.5). The ROC analysis confirmed that an increased Ki-67 is discriminant for developing distant metastases (AUC 0.83; $p<0.0001$) (Figure 2A). A Ki-67 threshold of $\geq 5\%$ ($p<0.000$) was also associated with increased risk of distant metastases.

3.4 Rb and P16

Rb was positive in 90% of the patients. There was no significant difference for Rb between the 4 prognostic groups (curative treated, recurrence of disease after EBT, lymph node involvement and distant metastases). P16, largely inversely associated to Rb, was positive in 16% of all patients¹³. Comparing the 4 prognostic groups, patients with distant metastases showed p16 positivity more often (30% of the cases). However, this did not reach statistical significance ($p=0.18$) (Table 2).

3.5 OTP and CD44

In the whole cohort loss of OTP and CD44 expression was found in 17% and 18%, respectively. In patients with distant metastases the loss of expression of OTP and CD44 was significantly higher (OTP; 60%; $p=0.008$, CD44; 75%, $p=0.0001$). In patients with N1 or N2 lymph node involvement or recurrence of disease after EBT no significant loss of OTP or CD44 expression was observed. ROC analysis revealed a slightly higher area under the curve (AUC) value for CD44 (0.87) than for OTP (0.68) Combining the OTP and CD44 data did not increase the ability to discriminate between patients with and without distant metastases (AUC: 0.86), (Figure 2B).

3.6 Risk factors distant metastases

Subsequently, binary logistic regression was employed to identify a multivariate panel of risk factors of distant metastases in patients with bronchial carcinoid. The results of this analysis revealed that loss of CD44 ($p < 0.000$), immunohistochemistry for Ki-67 ($p = 0.002$) and mitotic count ($p = 0.018$) were independently associated with a higher risk of distant metastases. In comparison to individual markers, this combination of predictors demonstrated the greatest performance in terms of discriminatory capacity ($p = 0.0001$, AUC 0.96) (Figure 2D).

3.7 Survival

Finally, a survival analysis was performed to assess the influence of pathologic tumor diameter (pT) on the development of distant metastases. In the pT stage IA bronchial carcinoid tumors the disease free survival rate was 100% (Figure 3A). Within the patients with pT stage IB-IV, histology of AC (≥ 2 mitosis per 2 mm²), loss of CD44 and Ki-67 $\geq 5\%$ showed prognostic value for development of distant metastases (Figure 3B, $p < 0.0001$). If all three factors were present the 50% disease free survival rate was 48 months. If one of these unfavorable prognostic characteristics was present 11% (6/54 patients) metastasized, one patient with TC and five AC. This patient group is further specified in (supplementary Table 4).

Discussion

In this study we demonstrate that combining tumor diameter (pT), mitotic count, CD44 and Ki-67 expression greatly improves prediction in patients with bronchial carcinoid. All bronchial carcinoids ≤ 1 cm and all bronchial carcinoids > 1 cm with a low mitotic index (< 2 per 2 mm²), a low Ki-67 expression ($< 5\%$) and a normal CD44 do not disseminate.

This study demonstrated a similar prognostic value for loss of OTP and/or CD44 for developing metastatic disease as previously reported in the literature. Loss of OTP and/or CD44 was independently associated with poor survival and increased risk of metastases (9, 23, 24). Most interestingly, studies showed that OTP in combination with CD44, allowed even better separation of tumors into prognostic relevant categories (23, 25). However, this study showed that CD44 has an identical prognostic value for development of distant metastases in patients with bronchial carcinoid compared to the combination of OTP and CD44. In other words, CD44 alone is a very reliable marker, what has, in contrast to OTP, the advantage of wide availability.

Ki-67 is a nuclear protein which plays an essential role in the control and timing of cell proliferation (12). The prognostic model of our study showed that a Ki-67 of $> 5\%$ was associated with risk for

development of distant metastases, what is in line with a two other studies reporting that a Ki-67 cutoff of 2.5% to 5% differentiates between lower and higher aggressive NE tumors in the setting of TC and AC (10, 12, 26). Remarkably, Ki67 and mitotic count showed no correlation. A possible explanation for this is that Ki-67 protein is present during all active phases of the cell cycle (G1, S, G2, and mitosis), but is absent in resting (quiescent) cells (G0). The mitotic count is only based on the mitotic phase of the cell cycle (27). This supports the additive prognostic value of the two. Ki-67 never exceeded 20% in this carcinoid cohort, a suggested cut-off value for the differential diagnosis with LCNEC (2). Ki-67, together with the mitotic count, is already used in a grading system for gastrointestinal neuroendocrine tumors to better predict the biological behavior of these entities (28).

From our data, we learn that Rb and p16 are not related to the development of metastases or differentiation between TC and AC. Few studies demonstrated Rb function essentially intact in TC's but lost in approximately 50% of ACs (15, 29). Our data show a rather random loss of Rb in ca 10% of the cases, irrespective of the prognostic group. RB is a low abundant nuclear transcription factor. Lost immunoreactivity might also be a false negative immunohistochemical result, what can be attributed to preanalytical variables (30). Although p16 was partially positive in several cases with distant metastases, it was never diffusely positive. Hypothetically, focal p16 staining in carcinoids may be used as diagnostic marker for the differential diagnosis with LCNEC, where it was often diffusely strong positive (16, 29).

To place our results in clinical context, we should explore how they might change the management of patients with bronchial carcinoid. In order to perform EBT as a minimally invasive treatment in patients with bronchial carcinoid, one would preferably only select patients without a chance of lymph node involvement and without a tendency to develop distant metastases. In the current study, all pT1A0 tumors did not disseminate, irrespective of the mitotic count and CD44 and Ki67 findings. Also, pT1B tumors with a mitotic count < 2 per 2 mm², a low Ki-67 expression (<5%) and a normal CD44 did not disseminate. These 2 categories of patients may be good candidates for EBT, provided there is no extraluminal component. Consequently, all other patients with resectable disease should then be treated with radical surgical resection. Of course, prospective trials would be required in order to assess whether such a surrogate biomarker-driven treatment strategy is effective and safe.

With regard to follow-up procedure after radical treatment, this biomarker set could also change our strategy. Because local recurrence occurs in a small proportion of patients after EBT, bronchoscopic follow-up is obviously mandatory. But after radical surgical resection of a tumor with a favourable biomarker profile (low mitotic count, low Ki-67 expression and normal CD44 expression), yearly follow-up may be futile.

The findings of the present study must be interpreted in the context of several potential limitations. Firstly, since the patients were referred to our hospital for treatment with EBT, the population included in this study has been exposed to selection bias. Patients treated with EBT were predominantly small TC tumors compared to the group that underwent surgical resection. However, this allowed us to investigate the prognostic value of morphology and immunohistochemistry in the context of low T stage with an intensive and long follow-up. Secondly, as previously stated, ki-67 and mitotic count has interobserver variability (31). Our study is a single-center study, with experienced laboratorian technician (32) and pathologists specialized in mitotic count in a tertiary referral center. Therefore, these results should be validated in other patient groups outside our institution. Another limitation is the median follow-up time of 5 years, considering the indolent growth of these tumors. Long term results should be analyzed in the future.

Conclusion

Adding tumor diameter, CD44 and Ki-67 to the widely used TC/AC classification, provides us with a multimodal biomarker that seems to accurately stratify patients in favorable and unfavorable groups. pT1A0 tumors, irrespective of MAI or immunohistochemistry findings and pT1B tumors with a favorable biomarker profile (MAI <2 per 2 mm², Ki-67 expression (<5%) and a positive CD44) did not metastasize. In the future, these findings may enable risk stratification in order to provide a tailored approach with regards to treatment and follow-up of patients with bronchial carcinoid.

Acknowledgements: ER, TR, ET, and HD were responsible for the conception and design of the study and acquisition of data. ER ET, and DN performed analysis and interpretation of the data. The article has been written by ER, TR, DN critically revised by the authors who all gave approval for submission. Each author has participated sufficiently in the contributions of this article and agreed to be accountable for all aspects of the work in ensuring that questions related to the accuracy or integrity of any part of the work are appropriately investigated and resolved. This study was supported by a grant of ORAS (Oncological Research Albert Schweitzer Hospital). We thank Kartik Viswanathan for sharing OTP antibody from Weill Cornell Medicine, Department of Pathology and Laboratory medicine.

References

1. Travis W. Pathology and Diagnosis of Neuroendocrine Tumors. 2014.
2. Baudin E, Caplin M, Garcia-Carbonero R, Fazio N, Ferolla P, Filosso PL, Frilling A, de Herder WW, Hörsch D, Knigge U, Korse CM, Lim E, Lombard-Bohas C, Pavel M, Scoazec JY, Sundin A, Berruti A. Lung and thymic carcinoids: ESMO Clinical Practice Guidelines for diagnosis, treatment and follow-up(☆). *Ann Oncol* 2021; 32: 439-451.
3. Brokx HA, Paul MA, Postmus PE, Sutedja TG. Long-term follow-up after first-line bronchoscopic therapy in patients with bronchial carcinoids. *Thorax* 2015; 70: 468-472.
4. Reuling E, Dickhoff C, Plaisier PW, Coupe VMH, Mazairac AHA, Lely RJ, Bonjer HJ, Daniels JMA. Endobronchial Treatment for Bronchial Carcinoid: Patient Selection and Predictors of Outcome. *Respiration* 2018.
5. WD Travis EB, AP Burke, A Marx, AG Nicholson. WHO Classification of Tumours of the Lung, Pleura, Thymus and Heart. Lyon: International Agency for Research on Cancer; 2015.
6. Travis WD. Pathology and diagnosis of Neuroendocrine Tumors: lung neuroendocrine. New York: Elsevier; 2014.
7. E.M.B.P. Reuling CD, P.W. Plaisier, H.J. Bonjer, J.M.A. Daniels Endobronchial and surgical treatment of pulmonary carcinoid tumors; A systematic literature review. *Lung Cancer* 2019.
8. Moonen L, Derks JL, Hermans BCM, Bunnik IM, Hillen LM, Jan van Suylen R, den Bakker MA, von der Thüsen JH, Damhuis RA, van den Broek EC, Buikhuisen WA, Dingemans AC, Speel EJM. Pre-operative biopsy diagnosis in pulmonary carcinoids, a shot in the dark. *J Thorac Oncol* 2020.
9. Swarts DR, Henfling ME, Van Neste L, van Suylen RJ, Dingemans AM, Dinjens WN, Haesevoets A, Rudelius M, Thunnissen E, Volante M, Van Criekinge W, van Engeland M, Ramaekers FC, Speel EJ. CD44 and OTP are strong prognostic markers for pulmonary carcinoids. *Clin Cancer Res* 2013; 19: 2197-2207.
10. Swarts DR, Rudelius M, Claessen SM, Cleutjens JP, Seidl S, Volante M, Ramaekers FC, Speel EJ. Limited additive value of the Ki-67 proliferative index on patient survival in World Health Organization-classified pulmonary carcinoids. *Histopathology* 2017; 70: 412-422.
11. Richards-Taylor S, Ewings SM, Jaynes E, Tilley C, Ellis SG, Armstrong T, Pearce N, Cave J. The assessment of Ki-67 as a prognostic marker in neuroendocrine tumours: a systematic review and meta-analysis. *J Clin Pathol* 2016; 69: 612-618.
12. Pelosi G, Rindi G, Travis WD, Papotti M. Ki-67 antigen in lung neuroendocrine tumors: unraveling a role in clinical practice. *J Thorac Oncol* 2014; 9: 273-284.
13. Rindi G, Klersy C, Inzani F, Fellegara G, Ampollini L, Ardizzoni A, Campanini N, Carbognani P, De Pas TM, Galetta D, Granone PL, Righi L, Rusca M, Spaggiari L, Tiseo M, Viale G, Volante M, Papotti M, Pelosi G. Grading the neuroendocrine tumors of the lung: an evidence-based proposal. *Endocr Relat Cancer* 2014; 21: 1-16.
14. Beasley MB, Lantuejoul S, Abbondanzo S, Chu WS, Hasleton PS, Travis WD, Brambilla E. The P16/cyclin D1/Rb pathway in neuroendocrine tumors of the lung. *Hum Pathol* 2003; 34: 136-142.
15. Cagle PT, el-Naggar AK, Xu HJ, Hu SX, Benedict WF. Differential retinoblastoma protein expression in neuroendocrine tumors of the lung. Potential diagnostic implications. *Am J Pathol* 1997; 150: 393-400.
16. Igarashi T, Jiang SX, Kameya T, Asamura H, Sato Y, Nagai K, Okayasu I. Divergent cyclin B1 expression and Rb/p16/cyclin D1 pathway aberrations among pulmonary neuroendocrine tumors. *Mod Pathol* 2004; 17: 1259-1267.

17. Babu MM, Luscombe NM, Aravind L, Gerstein M, Teichmann SA. Structure and evolution of transcriptional regulatory networks. *Current opinion in structural biology* 2004; 14: 283-291.
18. Latchman DS. Transcription factors: an overview. *The international journal of biochemistry & cell biology* 1997; 29: 1305-1312.
19. Baak JPA. Manual of quantitative pathology in cancer diagnosis and prognosis.: Springer; 1991.
20. Stenger M. Calculating H-Score. April 10, 2015. Available from: <https://www.ascopost.com/issues/april-10-2015/calculating-h-score/>.
21. Tembuysen L, Tack V, Zwaenepoel K, Pauwels P, Miller K, Bubendorf L, Kerr K, Schuurinckx E, Thunnissen E, Dequeker EM. The relevance of external quality assessment for molecular testing for ALK positive non-small cell lung cancer: results from two pilot rounds show room for optimization. *PLoS One* 2014; 9: e112159.
22. Marchiò C, Gatti G, Massa F, Bertero L, Filosso P, Pelosi G, Cassoni P, Volante M, Papotti M. Distinctive pathological and clinical features of lung carcinoids with high proliferation index. *Virchows Arch* 2017; 471: 713-720.
23. Papaxoinis G, Nonaka D, O'Brien C, Sanderson B, Krysiak P, Mansoor W. Prognostic Significance of CD44 and Orthopedia Homeobox Protein (OTP) Expression in Pulmonary Carcinoid Tumours. *Endocr Pathol* 2017; 28: 60-70.
24. Granberg D, Wilander E, Oberg K, Skogseid B. Decreased survival in patients with CD44-negative typical bronchial carcinoid tumors. *Int J Cancer* 1999; 84: 484-488.
25. Moonen L, Derks J, Dingemans AM, Speel EJ. Orthopedia Homeobox (OTP) in Pulmonary Neuroendocrine Tumors: The Diagnostic Value and Possible Molecular Interactions. *Cancers* 2019; 11.
26. Joseph MG, Shibani A, Panjwani N, Arab A, Shepherd J, Stitt LW, Inculet R. Usefulness of Ki-67, Mitoses, and Tumor Size for Predicting Metastasis in Carcinoid Tumors of the Lung: A Study of 48 Cases at a Tertiary Care Centre in Canada. *Lung cancer international* 2015; 2015: 545601.
27. Scholzen T, Gerdes J. The Ki-67 protein: from the known and the unknown. *Journal of cellular physiology* 2000; 182: 311-322.
28. Rindi G, Klöppel G, Alhman H, Caplin M, Couvelard A, de Herder WW, Eriksson B, Falchetti A, Falconi M, Komminoth P, Körner M, Lopes JM, McNicol AM, Nilsson O, Perren A, Scarpa A, Scoazec JY, Wiedenmann B. TNM staging of foregut (neuro)endocrine tumors: a consensus proposal including a grading system. *Virchows Arch* 2006; 449: 395-401.
29. Dosaka-Akita H, Cagle PT, Hiroumi H, Fujita M, Yamashita M, Sharma A, Kawakami Y, Benedict WF. Differential retinoblastoma and p16(INK4A) protein expression in neuroendocrine tumors of the lung. *Cancer* 2000; 88: 550-556.
30. Hassis ME, Niles RK, Braten MN, Albertolle ME, Ewa Witkowska H, Hubel CA, Fisher SJ, Williams KE. Evaluating the effects of preanalytical variables on the stability of the human plasma proteome. *Analytical biochemistry* 2015; 478: 14-22.
31. Warth A, Fink L, Fisseler-Eckhoff A, Jonigk D, Keller M, Ott G, Rieker RJ, Sinn P, Söder S, Soltermann A, Willenbrock K, Weichert W. Interobserver agreement of proliferation index (Ki-67) outperforms mitotic count in pulmonary carcinoids. *Virchows Arch* 2013; 462: 507-513.
32. Daniels JM, Eerenberg JP, Rijna H, Kummer JA, Broeckaert MA, Paul MA, van Diest PJ, van Mourik JC. Mitotic index does not predict prognosis in stage IA non-small cell lung cancer. *Lung Cancer* 2002; 38: 163-167.

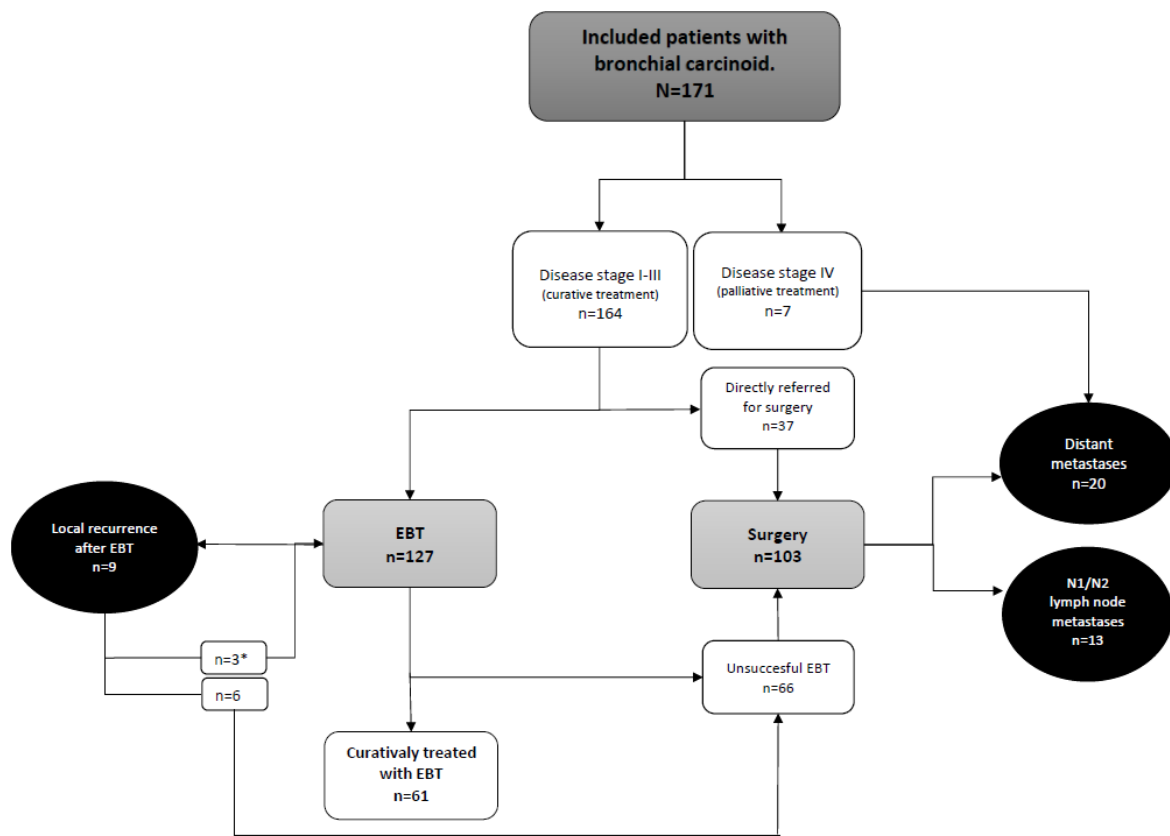


Figure 1: flowchart of 171 patients treated with bronchial carcinoid, * two patients refused surgery and 1 recurrence was curatively treated with EBT.

	EBT (definite treatment)	Surgery	Distant metastasis at diagnosis	P-value
Number	61 (35.7%)	103 (60.2%)	7 (4.1%)	
Median age at diagnosis	50.0 (12-85)	46 (14-77)	58 (33-79)	0.38
Gender (M / F)	28 / 33	43 / 60	04 / 03	0.96
Histology				0.000
TC	56 (91.8%)	53 (51.5%)	3 (42.9%)	
AC	5 (8.2%)	50 (48.5%)	4 (57.1%)	
EBT			NA	NA
EBT before surgery	NA	66 (64.1%)		
Number of EBT median (IQR)	1.0 (1-2)	1.0 (1-2)		
Surgery	NA		NA	NA
Pneumonectomy		6 (5.8%)		
Bilobectomy		24 (23.2%)		
Sleeve lobectomy		21 (20.4%)		
Lobectomy		44 (42.7%)		
Bronchial sleeve resection		1 (1.0%)		
Bronchotomy		1 (1.0%)		
Segmentectomy		5 (4.9%)		
Wedge resection		1 (1.0%)		
Tumordiameter (mm) median (IQR)	10 (7-16)	18 (13-25)	25 (16-36)	0.000
Tumor status^a				0.001
1a	31 (50.8%) *	22 (21.4%)	0 (0%)	
1b	26 (42.6%) *	41 (39.8%)	1 (14.3%)	
1c	4 (6.6%) *	26 (25.2%)	3 (42.9%)	
2a	0 (0%)	10 (9.7%)	0 (0%)	
2b	0 (0%)	1 (1.0%)	0 (0%)	
3	0 (0%)	3 (2.9%)	1 (14.3%)	
4	0 (0%)	0 (0%)	2 (28.6%)	
Lymph node status			NA	
N0	61*	88 (85.4%)		
N1	0	5 (4.9%)		
N2	0	8 (7.8%)		
unknown		2 (1.9%)		
Metastases				
Distant metastases during follow up.	0	13 (12.6%)	NA	
Follow up				0.024
Alive without disease	52 (85.2%)	81 (78.6%)		
Alive with disease	1 (1.6%)	10 (9.7%)	3 (42.9%)	
Died of other cause	7 (11.5%)	2 (1.9%)		
Died of disease	0 (0%)	9 (8.7%)	4 (57.1%)	
Lost to follow up	1 (1.6%)	1 (1.0%)		
Follow up time (months), median (IQR)	75 (43-120)	66 (35-115)	50 (12-80)	0.37

Table 1: demographics of patients treated for bronchial carcinoid (n=171), ^aTNM-classification 8th edition. *T and N status based on tumor characteristics on CT scan.

Immunohistochemical results of 4 prognostic groups

Marker	Number of positive tumors	%	AUC	P-value
Rb				
Whole group	154/171	90%	NA	NA
Curative treatment (EBT, surgery, N0)	116/129	90%	NA	NA
Local recurrence of disease after EBT	8/9	89%	0.57	0.48
N1 or N2 lymph node metastases	13/13	100%	0.66	0.60
Distant metastases	17/20	85%	0.52	0.79
P16				
Whole group	27/170*	16%	NA	NA
Curative treatment (EBT, surgery, N0)	15/129	12%	NA	NA
Local recurrence of disease after EBT	4/9	11%	0.65	0.13
N1 or N2 lymph node metastases	2/12*	17%	0.45	0.60
Distant metastases	6/20	30%	0.59	0.18
OTP				
Whole group	141/171	83%	NA	NA
Curative treatment (EBT, surgery, N0)	114/129	88%	NA	NA
Local recurrence of disease after EBT	7/9	77%	0.54	0.68
N1 or N2 lymph node metastases	12/13	92%	0.60	0.85
Distant metastases	8/20	40%	0.69	0.008
CD44				
Whole group	139/169*	82%	NA	NA
Curative treatment (EBT, surgery, N0)	115/128*	90%	NA	NA
Local recurrence of disease after EBT	7/8*	77%	0.51	0.95
N1 or N2 lymph node metastases	12/13	92%	0.41	0.07
Distant metastases	5/20	25%	0.84	<0.0001
OTP and/or CD44 negative				
Whole group	131/169*	78%	NA	NA
Curative treatment (EBT, surgery, N0)	110/128*	86%	NA	NA

Local recurrence of disease after EBT	6/8*	75%	0.55	0.67
N1 or N2 lymph node metastases	12/13	93%	0.44	0.55
Distant metastases	3/20	15%	0.85	<0.0001
Ki-67				
Whole group	NA	NA	NA	NA
Curative treatment (EBT, surgery, N0)	NA	NA	NA	NA
Local recurrence of disease after EBT	NA	NA	0.54	0.68
N1 or N2 lymph node metastases	NA	NA	0.60	0.22
Distant metastases	NA	NA	0.83	<0.0001
Mitotic index				
Whole group	NA	NA	NA	NA
Curative treatment (EBT, surgery, N0)	NA	NA	NA	NA
Local recurrence of disease after EBT	NA	NA	0.55	0.60
N1 or N2 lymph node metastases	NA	NA	0.31	0.29
Distant metastases	NA	NA	0.76	0.002

Table 2: number of positive staining, area under the curve (AUC) of the ROC curves and P-values of different immunohistochemical staining in four prognostic groups. Marked P-value are significant values. *CD44 (n=2) and P16 (n=1) missing.

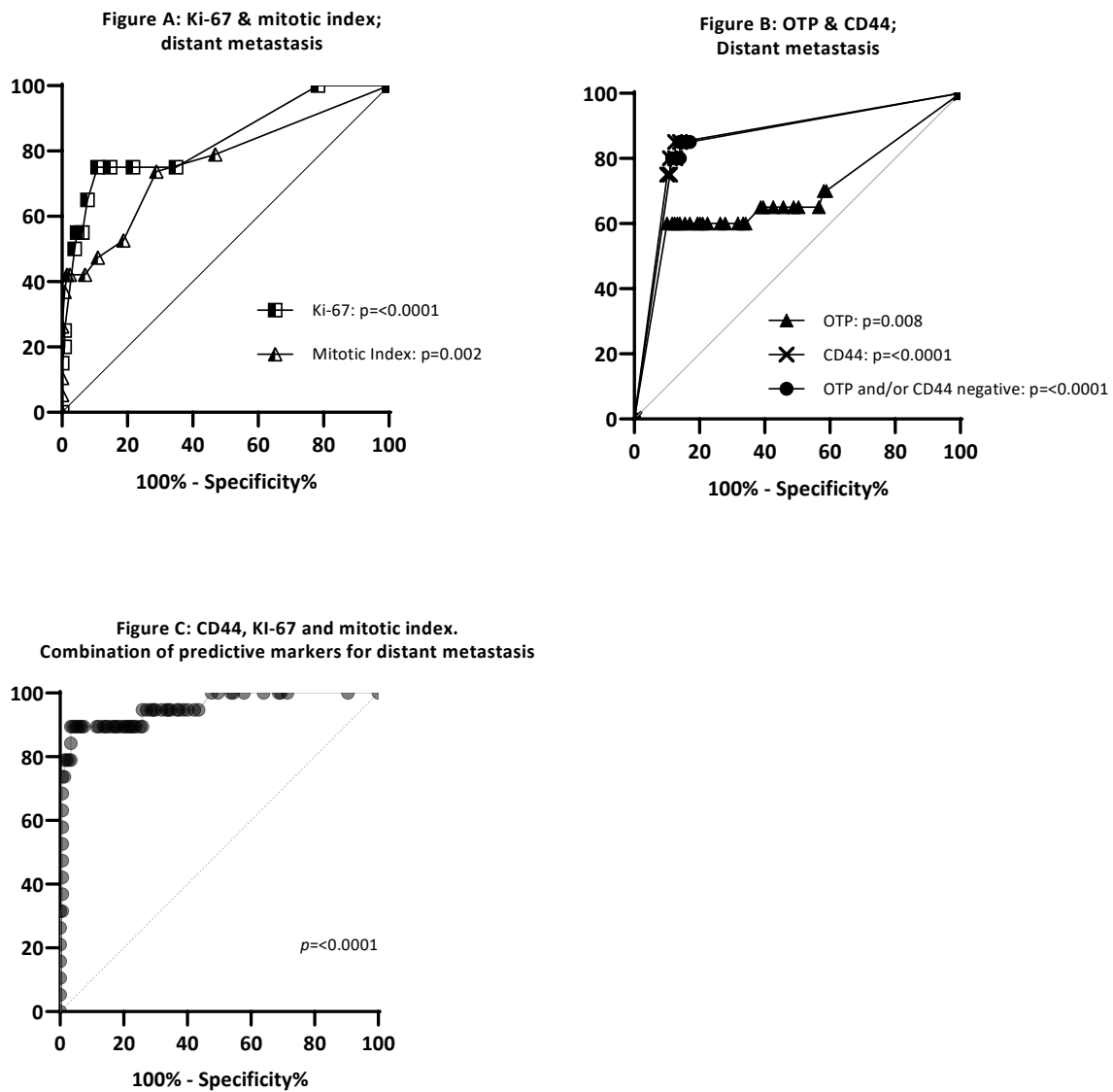


Figure 2: Ki-67 (AUC 0.83) and mitotic index (AUC 0.76) in patients with distant metastases (n=20) compared to patient without distant metastases (n=129) (Figure A). OTP (AUC 0.69), CD44 (AUC 0.87) of OTP and/or CD44 negative (AUC 0.86) in patient with distant metastases (n=20) compared to patient without distant metastases (n=129) (Figure B). Combination of predictive markers; negative CD44, Ki-67 and mitotic index (>2 mm²) for distant metastases (AUC 0.96) (Figure C).

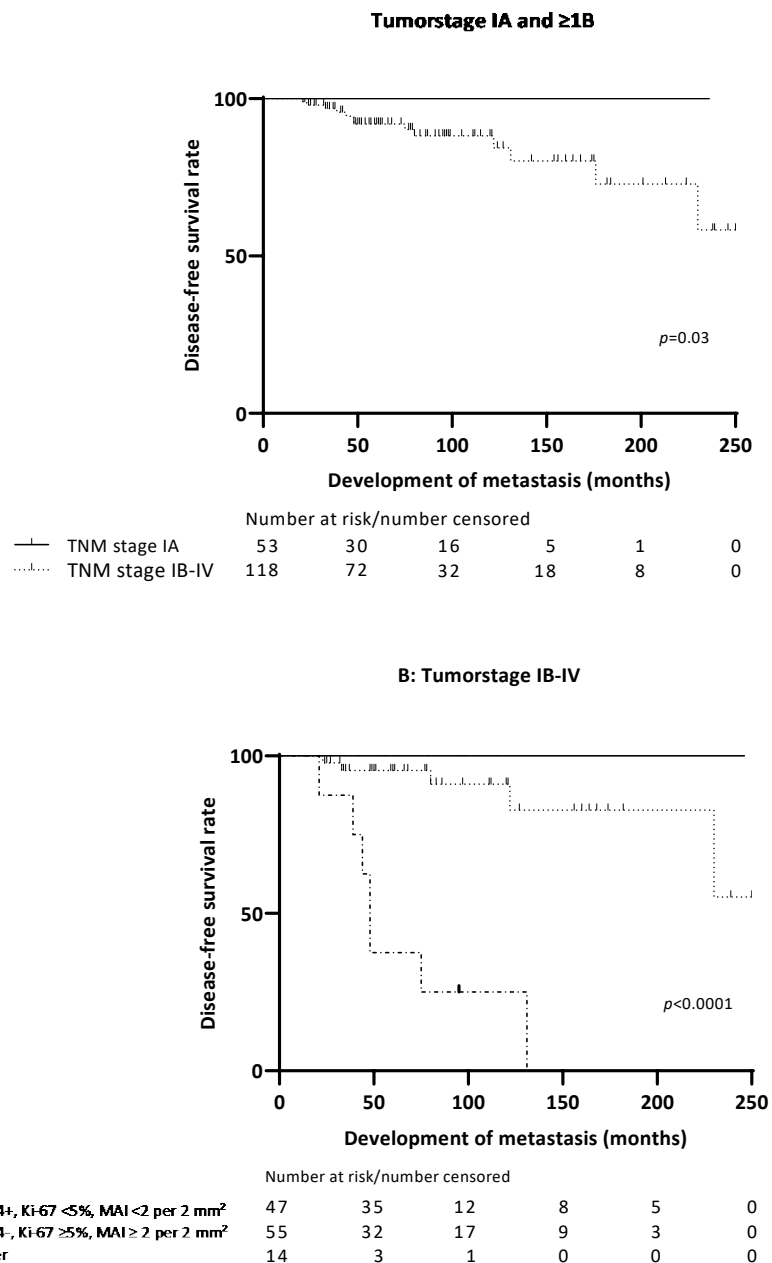


Figure 3: Survival curves. Development of distant metastases based on pathologic tumorstage (pT) for all patients divided in pT IA and IB-IV (A) and for pT ≥1B based on the combination of the 3 prognostic immunohistochemical markers (two patients were missing in CD44) (B).