

# Virus Watch

## Findings so far

### **Spike-antibody responses following first and second doses of ChAdOx1 and BNT162b2 vaccines by age, gender, and clinical factors - a prospective community cohort study (Virus Watch)**

#### *Authors*

Madhumita Shrotri, Ellen Fragaszy, Cyril Geismar, Vincent Nguyen, Sarah Beale, Isobel Braithwaite, Thomas E Byrne, Wing Lam Erica Fong, Jana Kovar, Annalan M D Navaratnam, Parth Patel, Anna Aryee, Anne M Johnson, Alison Rodger, Andrew C Hayward, Robert W Aldridge on behalf of the Virus Watch Collaborative\*

#### *Affiliations*

Institute of Health Informatics, University College London, UK (MS, EF, CG, VN, SB, IB, TB, WF, AN, PP, AA, RWA); Public Health England (MS); Institute of Epidemiology and Health Care, University College London, London, UK (JK, SB, ACH); Department of Infectious Disease Epidemiology, London School of Hygiene and Tropical Medicine, Keppel Street, London, UK (EF); Institute for Global Health, University College London, London, UK (AMJ, AR).

#### **\*Virus Watch Collaborative:**

*Susan Michie, Pia Hardelid, Linda Wijlaars, Eleni Nastouli, Moira Spyer, Ben Killingley, Ingemar Cox, Vasileios Lampos, Rachel A McKendry, Tao Cheng, Yunzhe Liu, Jo Gibbs, Richard Gilson*

*Centre for Behaviour Change, University College London, London, UK (SM); Department of Population, Policy and Practice, UCL Great Ormond Street Institute of Child Health, London, UK (PH, LW, EN, MS, BK); Francis Crick Institute, London, UK (EN, MS); Health Protection and Influenza Research Group, Division of Epidemiology and Public Health, University of Nottingham School of Medicine, Nottingham, UK (BK); University College London Hospital, London, UK (BK); Department of Computer Science, University College London, London, UK (IC, VL); London Centre for Nanotechnology and Division of Medicine, London, University College London (RM); SpaceTimeLab, Department of Civil, Environmental and Geomatic Engineering, University College London, London, UK (TC, YL); Institute for Global Health, University College London, London, UK (JG, RG).*

*These results are provisional and subject to revision - Draft 14th May 2021*

1

**NOTE: This preprint reports new research that has not been certified by peer review and should not be used to guide clinical practice.**

# Abstract

## Background

Vaccination constitutes the best long-term solution against Coronavirus Disease 2019 (COVID-19). Real-world immunogenicity data are sparse, particularly for ChAdOx1 and in populations with chronic conditions; and given the UK's extended dosing interval, it is also important to understand antibody responses in SARS-CoV-2-naive individuals following a single dose.

## Methods

Adults aged  $\geq 18$  years from households enrolled in Virus Watch, a prospective community cohort study in England and Wales, provided capillary blood samples and self-reported vaccination status. Primary outcome variables were quantitative Spike total antibody levels (U/ml) and seropositivity to Spike ( $\geq 0.8$  U/ml), as per Roche's Elecsys Anti-SARS-CoV-2 S assay. Samples seropositive for Nucleocapsid, and samples taken prior to vaccination, were excluded. Outcomes were analysed by days since vaccination, vaccine type (BNT162b2 and ChAdOx1), and a range of self-reported demographic and clinical factors.

## Results

8,517 vaccinated participants (median age 65 years [IQR: 58, 71]), contributed 13,232 samples (8,115 following ChAdOx1, 5,008 following BNT162b2). Seropositivity to Spike was 96.42% (95%CI 96, 96.79) at 28-34 days following a single dose, reaching 99.08% (97.8, 99.62) at 7-14 days after a second dose. Seropositivity rates, and Spike-antibody levels rose more quickly following the first dose of BNT162b2, however, were equivalent for both vaccines by 4 and 8 weeks, respectively. There was evidence of lower S-antibody levels with increasing age ( $p=0.0001$ ). In partially vaccinated 65-79 year-olds, lower S-antibody levels were observed in men (25.9 vs 42.3 U/ml,  $p<0.0001$ ), those with a chronic condition (33.0 vs 41.2 U/ml,  $p<0.0001$ ), diabetes (22.32 vs 36.01 U/ml,  $p<0.0001$ ), cardiovascular disease (32.1 vs 36.7 U/ml,  $p=0.0002$ ), or history of cancer (30.1 vs 35.7 U/ml,  $p=0.0001$ ), particularly those with haematological rather than solid organ cancer (7.48 vs 31.68 U/ml,  $p<0.0001$ ), and those currently on immunosuppressive therapy (21.7 vs 35.6 U/ml,  $p<0.0001$ ). Following a second dose, high S-antibody titres ( $\geq 250$ U/ml) were observed for nearly all individuals.

## Interpretation

A single dose of either BNT162b2 or ChAdOx1 leads to high Spike seropositivity rates in SARS-CoV-2-naive individuals. However, observed disparities in antibody levels after the first dose by vaccine type, age, and comorbidities highlight the importance of ongoing non-pharmaceutical preventative measures such as social distancing, for partially vaccinated adults, particularly those who are older and more clinically vulnerable.

# Introduction

The ongoing Severe Acute Respiratory Syndrome Coronavirus 2 (SARS-CoV-2) pandemic and the morbidity and mortality resulting from the associated clinical syndrome, Coronavirus disease-2019 (COVID-19), has had a devastating impact on many nations with over 158,651,638 confirmed cases and 3,299,764 deaths reported globally as of 11 May 2021<sup>1</sup>. Early in the pandemic, global vaccine developers joined the race to find a definitive, long-term solution, pivoting both established and experimental vaccine platforms towards SARS-CoV-2, with many candidates having now completed clinical testing and achieved licensure<sup>2</sup>. Pfizer/BioNTech's BNT162b2 messenger RNA vaccine, and Oxford/AstraZeneca's ChAdOx1 nCoV-19 non-replicating adenovirus-vectored vaccine were licensed in the UK in December 2020<sup>3,4</sup>. Both vaccines are based on the Spike protein of SARS-CoV-2, which contains the receptor binding domain - the target for neutralising antibodies that can prevent the virus binding to the ACE2 receptor on the human cell surface<sup>5</sup>. The formulation of these vaccines allows antibodies against the Nucleocapsid protein, an abundant and highly immunogenic viral antigen<sup>6</sup>, to remain discriminatory for natural infection. Vaccination has been offered in accordance with the UK's Joint Committee on Vaccination and Immunisation's prioritisation framework<sup>7</sup>, with 35,587,348 people having received their first vaccine dose as of 11 May 2021<sup>8</sup>.

Trial and observational data have demonstrated efficacy of both vaccines against infection and clinical severity<sup>9-12</sup>, with increasing evidence for impact on transmission<sup>11,13-15</sup>. While there are abundant trial data on immunogenicity, evidence is generally limited to younger, healthier trial populations, as well as to manufacturer-recommended dosing regimens. In the UK, the recommended dosing interval was extended from 3-4 weeks, to 8-12 weeks in order to maximise first-dose coverage across the population<sup>16</sup>; thus there is a pressing need to understand features of the humoral immune response between 4-12 weeks in a real-world setting, particularly for BNT162b2. Furthermore, it is critical to understand immunogenicity amongst older people, those with metabolic risk factors, and those from ethnic minority backgrounds, as these groups are at highest risk of COVID-19 morbidity and mortality<sup>17-20</sup>; as well as those on immunosuppressive therapies, which are likely to attenuate vaccine responses<sup>21</sup>. The existing observational data are limited by reporting on specific populations such as healthcare workers<sup>22,23</sup> or long-term care residents<sup>24</sup>; by focusing solely on BNT162b2<sup>22,25,26</sup> or shorter dosing intervals<sup>25</sup>; by lack of detailed information on underlying health conditions<sup>27</sup>; and often relatively small sample sizes.

We analysed serological data from a large prospective community cohort, Virus Watch<sup>28</sup>, obtained using a widely available, validated commercial assay. We determined seropositivity rates for Spike, and Spike-antibody levels in order to investigate vaccine responses in individuals without prior infection from the general population of England and Wales.

# Methods

## *Study design and setting*

The analysis was conducted as part of a prospective community cohort study based in England and Wales, which commenced recruitment in May 2020. Invitations to participate in monthly antibody testing were sent to previously enrolled eligible households over February-March 2021. Consenting participants provided monthly capillary blood samples and weekly self-reported vaccination data in addition to demographic and clinical data collected at enrolment into the study.

Blood samples were self-collected by participants using an at-home capillary blood sample collection kit, manufactured by the company Thriva [<https://thriva.co/>]. Completed kits were returned by participants using pre-paid envelopes and priority postage boxes to UKAS-accredited laboratories, for serological testing using Roche's Elecsys Anti-SARS-CoV-2 assays targeting total immunoglobulin (Ig) to the Nucleocapsid (N) protein or to the receptor binding domain in the S1 subunit of the Spike protein (S) (Roche Diagnostics, Basel, Switzerland).

At the manufacturer-recommended cut-offs ( $\geq 0.1$  cut-off index [COI] for N and  $\geq 0.8$  units per millilitre [U/ml] for S), the N assay has a sensitivity of 97.2%-99.5% and specificity of 99.8%<sup>29-31</sup>, while the S assay has a sensitivity of 97.9%-98.8% and a specificity of 100%<sup>32-34</sup>, with high agreement between the assays for samples from previously infected individuals<sup>32</sup>.

## *Participants*

Within the Virus Watch cohort, eligible households were defined as having at least one adult aged 18 years and over, a valid England or Wales postcode, a complete postal address registered at enrollment, complete gender and ethnicity information for all household members, and not enrolled in the study sub-cohort undergoing longitudinal point-of-care antibody testing as part of index case investigations<sup>28</sup>.

Individuals that were 18 years and over within eligible households could consent to participate through provision of valid, electronic consent. Individuals were included in this analysis if they had provided at least one sample following one or more doses of vaccination. Evidence of natural infection was defined as seropositivity for the Nucleocapsid protein. Samples meeting this criterion were excluded from the analysis. Samples with void results from either assay were also excluded from the analysis.

Individuals reporting vaccination prior to national licensure dates (8 December 2020 for BNT162b2 and 30 December 2020 for ChAdOx1) were assumed to either be clinical trial participants or to have reported an erroneous date and were excluded from the analysis.

### *Exposure variables*

Self-reported vaccination status was collected through the weekly Virus Watch questionnaire. The item was introduced on 11 January 2021 and asked about any prior vaccination for the first two surveys. Subsequently, participants were asked to provide a weekly update only.

Time since vaccination was defined according to whether a sample was recorded as being i) on the same date as, or subsequent to, the first vaccine dose, and prior to the date of the second dose (considered a first dose sample), or ii) on the same date as, or subsequent to, the second dose - considered a second dose sample. Days since vaccination were then grouped into the following intervals: 0-6, 7-13, 14-20, 21-27, 28-34, 35-41, 42-55, 56-69, and 70-83 days for first dose; and 0-6, 7-13,  $\geq 14$  days for second dose samples. Binary variables were created to indicate results that were  $\geq 28$  days following the first vaccine dose, and  $\geq 14$  days following the second vaccine dose.

### *Outcome variables*

The main outcome variables were seropositivity to Spike, and level of Spike antibodies (U/ml), as per Roche's Elecsys Anti-S total immunoglobulin assay. The assay measuring range was 0.4–250 U/mL, with cut-off for positivity at  $\geq 0.8$  U/ml.

### *Covariates*

Self-reported demographic data, including age, sex, and ethnicity, as well as binary health status variables, including current immunosuppressive therapy, cancer diagnosis (previous or current), and current chronic diseases, were collected at enrollment. Where appropriate, individual conditions were grouped into broader categories such as respiratory, neurological, or cardiovascular conditions. Self-reported 'no chronic condition' status excluded severe obesity, which was assigned by the research team as BMI  $\geq 40$ , calculated using self-reported height and weight data, or from a visual analogue scale for body size if biometric data were unavailable.

Age was grouped into 18-34, 35-49, 50-64, 65-79,  $\geq 80$  years categories. Ethnicity data were collapsed into White, South Asian, Other Asian, and Mixed categories. Sex was limited to Male and Female with other categories suppressed due to small numbers. Vaccine types other than BNT162b2 and ChAdOx1 were not examined separately due to small numbers.

### *Statistical analysis*

We calculated proportions of seropositive individuals (as per  $\geq 0.8$  U/ml cut-off) for each time interval and the 95% confidence interval around each proportion. We calculated the median and interquartile range of S-antibody levels for each group from all available values, including those below the cut-off for binary positivity.

The distribution of S-antibody levels was tested for normality using the Kolmogorov-Smirnov test. Bonferroni-adjusted p-values for the difference between median S-antibody levels between different groups were derived using

non-parametric tests: the Mann-Whitney U (Wilcoxon Rank Sum) test for two groups, or the Kruskal-Wallis test for >2 groups. We compared S-antibody levels between BNT162b2 and ChAdOx1 vaccinees and between age groups, at  $\geq 28$  days after the first dose. We also compared S-antibody levels by sex, ethnicity, and chronic condition, severe obesity, or immunosuppressive therapy status at  $\geq 28$  days after the first dose; to minimise confounding by age this analysis was restricted to 65-79 year-olds for most conditions as it was the largest age group; however for HIV the 35-49 years age group was used as it contained most individuals with HIV. We did not compare S-antibody levels after the second dose due to small numbers and limitations of the dynamic range of the assay.

Analysis was conducted in Stata version 16.0 (StataCorp, TX, USA) and R (version 4.0.3).

### *Ethical approval*

This study has been approved by the Hampstead NHS Health Research Authority Ethics Committee. Ethics approval number - 20/HRA/2320.

### *Role of the funding source*

The funder had no role in study design, data collection, data analysis, data interpretation, or writing of the report. The corresponding author had full access to all data in the study and had final responsibility for the decision to submit for publication.

## Results

8,517 participants without evidence of prior infection (N-antibody negative), with a median age of 65 (IQR 58, 71), of whom 57% were female and 97% were of a White ethnicity, contributed 13,232 samples following at least one dose of a COVID-19 vaccine (Table 1). 70.4% (n=5,997) of individuals reported at least one chronic condition, with 10% (n=881) reporting ever having received a cancer diagnosis and 0.9% (n=74) reporting prior or current haematological malignancy. 4.0% (n=342) were classified as severely obese, and 6.8% (n=579) reported currently taking some form of immunosuppressive therapy. The majority of included samples (11,645, 88.0%) were first dose samples, including 8,549 samples from  $\geq 28$  days after the initial dose; with 542 (4.1%) samples from  $\geq 14$  days after the second dose.

3,099 (36.4%) individuals were vaccinated with BNT162b2 and 5,342 were vaccinated with ChAdOx1 (62.7%). Demographic and clinical characteristics were broadly similar across the two main vaccine types, though BNT162b2 vaccinees were slightly older and more likely to report a chronic condition or immunosuppressive therapy, and also to have longer median intervals between first or second dose date and sample dates (dose 1: 48 vs 35 days; dose 2: 12 vs 6) (Table 2). The majority of second dose samples were from BNT162b2 vaccinees (997/1,409, 70.8%).

### *Qualitative seroconversion to Spike*

The proportion of seropositive individuals rose more quickly following the first dose of BNT162b2 than ChAdOx1; these were 89.27% (83.52, 93.25) and 66.27% (62.56, 69.80) at 14-20 days, rising to 96.32% (93.32, 98.05) and 90.15% (88.01, 91.95) at 21-27 days for BNT162b2 and ChAdOx1, respectively (Table 3). By days 28-34, the proportions of seropositive individuals were similar for both vaccines (96.17% [94.22, 97.50] vs 95.21% [93.75, 96.35]), and remained around this level for 12 weeks following a single dose. Following a second dose, the proportions of seropositive individuals were 96-97% at 0-6 days, reaching 98-99% for both vaccines from  $\geq 7$  days.

At  $\geq 28$  days following the first dose, a slightly higher proportion of women had seroconverted to Spike than men (97.49% [97.01, 97.90] vs 94.99% [94.23, 95.65]), however both groups reached  $>99\%$  at  $\geq 14$  days following the second dose (Table 4). There were no significant differences between ethnic groups following the first dose, and small numbers precluded comparisons after the second dose. There was very little difference between age groups, with 92.86% (87, 95.92) and 99.12% (93.87, 99.88) of those aged  $\geq 80$  years being seropositive after the first and second doses, respectively (Figure 2).

Lower seropositivity rates were observed for a small number of self-reported health conditions, compared with those who reported no chronic conditions (97.65% [96.94, 98.2]) (Table 4). Only 70% (60.21, 78.25) of individuals with a history of haematological malignancy; 84.21% (77.46, 89.22) with chronic kidney disease (CKD); 94.22% (92.34, 95.66) with diabetes; 95.49% (93.93, 96.66) with a history of solid organ cancers; 92.23% (87.47, 95.28) with neurological conditions; and 95.98% (95.46, 96.44) of those with any chronic condition were seropositive at  $\geq 28$  days after the first dose.

Those on all types of immunosuppressive therapies were less likely to be seropositive than those not on such therapies (86.18% [83.30, 88.62] vs 97.26% [96.88, 97.60]), with only 33.33% (16.95, 55.05) of organ transplant recipients, 55.56% (21.02, 85.45) of radiotherapy recipients, 83.54% (73.51, 90.28) of cancer chemotherapy or targeted therapy recipients, and 83% (77.76, 87.20) of those on steroids or similar immunosuppressive medications seropositive at  $\geq 28$  days after a single dose.

At  $\geq 14$  days following the second dose, most of these disparities resolved with most groups reaching 95-100% seropositivity, though only 4/5 individuals with a history of haematological malignancy were seropositive at this time point.

### *Quantitative Spike antibody levels*

S-antibody levels increase over time after the first vaccine dose for both main vaccine types, however levels were higher at earlier time points following BNT162b2 than ChAdOx1 (Table 3, Figure 2). There also appeared to be a

very slight but consistent decline in S-antibody levels for BNT162b2 vaccinees from 35-41 days onwards, and conversely a slight but sustained increase in titres in ChAdOx1 vaccinees over the same period.

There was evidence to suggest a significant difference in S-antibody levels by age group at  $\geq 28$  days after a single dose ( $p=0.0001$ ), with lower S-antibody levels seen in older age groups (18-34y: median 63.4 U/ml [IQR 34.2, 99.34] vs  $\geq 80$ y: 26.13 [8.34, 80.4]) (Tables 4 and 5; Figure 2).

Amongst 65-79 year-olds, significant differences in antibody levels were observed between vaccines at  $\geq 28$  days (BNT162b2: median 41.4U/ml [IQR 17.8, 84.8] vs ChAdOx1: 30.21U/ml [11.9, 67.16],  $p<0.0001$ ), and at  $\geq 42$  days (BNT162b2: 40.5U/ml [18.64, 81.87] vs ChAdOx1: 35.9U/ml [15, 73.36],  $p=0.0004$ ) following the first dose (Table 5). However, beyond 56 days, there was insufficient evidence to suggest a difference (BNT162b2: 39.39U/ml [18.9, 75.6] vs ChAdOx1: 36.79U/ml [16.44, 73],  $p=0.0494$ ).

Amongst 65-79 year-olds at  $\geq 28$  days after the first dose, higher titres were seen in Females compared to Males (F: median 42.73 U/ml [IQR 18.7, 88.71]) vs M: 25.9 [10.3, 59.07],  $p<0.0001$ ). Those from minority ethnic groups appeared to have higher titres than those of White ethnicity ( $p=0.0005$  for a difference by ethnicity), though numbers were very small in some groups.

Compared to S-antibody levels in 65-79 year-olds reporting no chronic conditions (median 41.2U/ml [IQR 17.8, 87.02]), those with one or more chronic conditions had lower titres (33 [13.1, 72.09],  $p<0.0001$ ) at  $\geq 28$  days after a single dose (Table 5). There was also evidence for a difference in titres by cancer history (cancer diagnosis: 30.1 [11.1, 61.51] vs no cancer diagnosis: 35.7 [14.6, 76.9],  $p=0.0001$ ); by cancer type (haematological: 7.48 [0.4, 49.05] vs solid organ: 31.68 [13, 62.16],  $p<0.0001$ ); by diabetes status (diabetic: 22.32 (8.14, 56) vs non-diabetic: 36.01 [15, 77.34],  $p<0.0001$ ); by cardiovascular disease status (CVD: 32.1 [12.93, 70.9] vs no CVD: 36.7 [15.12, 78.33],  $p=0.0002$ ), and by immunosuppressive therapy status (immunosuppressed: 21.7 [3.9, 60] vs not: 35.6 [14.8, 76.2]). Though these differences were statistically significant, it is not clear whether the absolute difference in titres is of clinical significance. There was insufficient evidence for differences by severe obesity, respiratory disease, hypothyroidism, CKD, liver disease, and neurological disease status for 65-79 year-olds, and by HIV status for 35-49 year-olds, at  $\geq 28$  days after a single vaccine dose.

Though differences in S-antibody levels were apparent for some demographic and clinical groups following the first vaccine dose, levels reached  $\geq 250$  U/ml for most groups at  $\geq 14$  days after the second dose (Table 4, Figure 3).



## Discussion

Findings from this large community cohort without evidence of prior infection, indicate that the vast majority of individuals have seroconverted to Spike by 4 weeks following the first dose of either BNT162b2 or ChAdOx1 vaccines. While seroconversion following Pfizer/BioNTech's vaccine appears to occur earlier, and Spike-antibody levels rise earlier compared with Oxford/AstraZeneca's vaccine, the proportions of seroconverted individuals are equivalent from 4 weeks onwards, and the S-antibody levels are comparable from 8 weeks onwards. Following the second dose of either vaccine, seroprevalence rises further and S-antibody levels reach  $\geq 250$  U/ml for the majority of individuals. Disparities in seroconversion rates and S-antibody levels are evident between demographic and clinical groups after the first dose, particularly amongst those with diagnoses or therapies affecting the immune system. Importantly, S-antibody levels are significantly lower in individuals with common comorbidities such as diabetes and cardiovascular disease; interestingly however, this is not the case for severe obesity.

A study of a larger healthcare worker cohort found that seroconversion rates were 99.5% (2706/2720) and 97.1% (864/890) at >14 days after a single dose of BNT162b2 and ChAdOx1, respectively<sup>23</sup>. The slightly lower seroconversion rates observed in our cohort could be attributed to the older average age and higher prevalence of comorbidities, and thus a reduced healthy-worker bias. Conversely, seroconversion rates appear substantially higher in our cohort than those reported by the REACT2 study<sup>35</sup> which found 84.1% (82.2, 85.9) seroconversion  $\geq 21$  days after a dose of BNT162b2; though this may be attributable to differences in assay sensitivities.

A large observational study including 38,262 SARS-CoV-2-naive individuals (from a community cohort enrolled in the UK's national COVID-19 Infection Survey), modelled the probability of seroconversion to Spike following a single dose vaccination<sup>27</sup>. Similar to our findings, they reported lower probabilities of seroconversion, as well as slower rate of increase of S-antibody titres, following ChAdOx1 compared with BNT162b2; also in line with our findings, differences between the two vaccines attenuated at later time points following the first dose. For BNT162b2, the authors reported a gradual decline in anti-S levels from 35 days post-first dose, whereas titres remained stable for ChAdOx1. We also observed a very slight decline over this time period for BNT162b2, but noted a slight and sustained increase in titres for ChAdOx1 over the same time period. It is not possible to compare the magnitude of these effects across the studies due to lack of standardisation across the different assays; nor is it yet clear whether these trends are of clinical significance.

Both trial and observational data relating to single-dose BNT162b2<sup>36-39</sup> and ChAdOx1<sup>27,40</sup> indicate lower antibody titres in older adults compared to younger adults, which is also reflected in our findings. While evidence directly linking S-antibody titres with efficacy in older age groups is lacking, available data do suggest lower VE against infection in older populations<sup>11,41</sup>; however VE against clinical outcomes appears similar across age groups<sup>9,42</sup>, which may be because the baseline risk of these outcomes is much higher in older people. Taken together, these

findings suggest that immune correlates of protection are likely to vary by the specific clinical outcome studied and age disparities may be more apparent for some than others.

Notably, those with haematological malignancy and those on immunosuppressive medications, especially following organ transplantation, showed markedly lower seroconversion rates after the first vaccine dose. This is in line with findings from studies focusing on patients with cancer<sup>43</sup>, and specifically those with haematological malignancy<sup>44</sup>, as well as immunosuppression<sup>45,46</sup>, particularly following organ transplantation<sup>47-49</sup>. Taken together, these findings highlight the need to further investigate vaccine immunogenicity and efficacy in these groups. Early data hinting at the correlation of S-antibody levels with protection against infection<sup>50</sup> suggest that the impact of expediting the second dose of vaccination in these groups should be explored.

Our findings provide immunological insights to support real-world data on vaccine effectiveness (VE). Reports of single-dose VE from the UK indicate lower odds of infection from 21 days after a single dose of either vaccine (ChAdOx1 - OR 0.36 [95% CI 0.30, 0.45]; BNT162b2 0.33 [0.28, 0.39]) in a large community cohort<sup>11</sup>. Data on BNT162b2 from Israel indicate onset of protection from as early as 14 days after the first dose, against asymptomatic (14-20d: 29% [95% CI 17,39]; 21-27d: 52% [41,60]) and symptomatic (57% [50,63]; 66% [57,73]) infections<sup>42</sup>. Several studies also report reduced PCR Cycle threshold values, indicative of viral load and potential infectivity<sup>51,52</sup>, from as early as 12 days following a single dose<sup>11,13,15</sup>. Across most reports, protective effects first appear between 2-4 weeks after a single dose depending on the outcome studied, and VE appears to increase over time; these trends mirror the immunogenicity data on seroconversion rates and S-antibody titres reported here and elsewhere<sup>27</sup>. There is also emerging evidence from other studies to suggest lower VE in those with diabetes and cardiovascular conditions<sup>41</sup>. However, counter to observed immunological trends, there is as yet little observational evidence demonstrating significant differences in single-dose VE between BNT162b2 and ChAdOx1 at 2-8 weeks. Differences may be masked by the uncertainty in the available VE estimates, or it may be that, beyond a certain threshold that both vaccines achieve early on, S-antibody levels do not exactly correlate with protection.

Accumulating evidence suggests the importance of T-cell responses in protection against COVID-19<sup>50,53,54</sup>, and it may be that, at earlier time points when S-antibody levels following ChAdOx1 are lower than BNT162b2, VE is driven by T-cell immunity. Furthermore, in those with immunosuppression or haematological malignancy, it is possible that helper T-cell impairment contributes to attenuated antibody responses. As has been noted with immune responses to infection<sup>55</sup>, it is possible that the overall balance and co-ordination between humoral and cellular arms of the adaptive immune response may be the best predictor of protection<sup>56</sup>, rather than the level of any one immune component alone. In future work, it will be important to link data from deeper immunophenotyping with the risk of vaccine breakthroughs and failures, and their clinical severity and viral load, in order to better understand immunity against these outcomes.

### *Strengths and Limitations*

The strengths of this study include the large community cohort, which spans many ages and ethnic groups, and includes large numbers of individuals with common chronic conditions as well as capturing those with rarer diagnoses. To the best of our knowledge, these data constitute some of the earliest real-world evidence on immunogenicity in many of these clinical groups and also for ChAdOx1. We employed a highly sensitive, widely used validated commercial assay that gives quantitative readouts on a linear scale, allowing these data to be easily understood, replicated, and informative for clinical practitioners. Limitations include the use of self-reported vaccination status, which may have introduced error into the assignment of vaccination date and type, or the omission of a recent second dose for some individuals; and collection of clinical data at enrolment only, which may have led to misclassification due to more recent diagnoses. Additionally, the cancer categories encompassed both prior and current diagnoses. Due to the available platform and dilution capabilities, the dynamic range of the anti-S assay was limited to 0.4U/ml - 250U/ml, which precluded differentiation of S-antibody levels between groups following the second dose. With regards to immunosuppressive therapies such as steroids, attenuation of vaccine responses is likely to be dose-dependent, however we were not able to ascertain dosage or duration of therapy; and we were also unable to distinguish specific drugs most likely to affect humoral responses such as Methotrexate or Rituximab<sup>21,44,46,57</sup>.

### *Conclusions*

Our data indicate very high rates of seroconversion to Spike following a single dose of either vaccine, with near-complete seroconversion following a second dose, in individuals with no evidence of prior infection. Despite earlier responses with BNT162b2 compared to ChAdOx1, both vaccines demonstrate equivalent seropositivity rates and S-antibody levels from 4 and 8 weeks following a single dose, respectively, with no differences in seropositivity seen after a second dose. Disparities in seropositivity rates between demographic and clinical groups also do not persist after the second dose. High seroconversion rates after the first dose lend support to the UK policy to prioritise first-dose coverage across the population, however our data also suggest attenuated immune responses in some clinical groups, which warrant further investigation. Studying longer-term dynamics of the humoral and cellular immune responses, and the correlates of protection against disease, asymptomatic infection, and onward transmission, including for emerging variants of concern, remain key questions for informing global COVID-19 control policies.

## Funding

The research costs for the study have been supported by the MRC Grant Ref: MC\_PC 19070 awarded to UCL on 30 March 2020 and MRC Grant Ref: MR/V028375/1 awarded on 17 August 2020. The study also received \$15,000 of Facebook advertising credit to support a pilot social media recruitment campaign on 18th August 2020. This study was supported by the Wellcome Trust through a Wellcome Clinical Research Career Development Fellowship to RA [206602].

## Conflicts of interest

ACH serves on the UK New and Emerging Respiratory Virus Threats Advisory Group. AMJ was a Governor of Wellcome Trust from 2011-18 and is Chair of the Committee for Strategic Coordination for Health of the Public Research.

## Data availability

We aim to share aggregate data from this project on our website and via a "Findings so far" section on our website - <https://ucl-virus-watch.net/>. We will also be sharing individual record level data on a research data sharing service such as the Office of National Statistics Secure Research Service. In sharing the data we will work within the principles set out in the UKRI Guidance on best practice in the management of research data. Access to use of the data whilst research is being conducted will be managed by the Chief Investigators (ACH and RWA) in accordance with the principles set out in the UKRI guidance on best practice in the management of research data. We will put analysis code on publicly available repositories to enable their reuse.

## References

1. World Health Organization. Coronavirus (COVID-19) Dashboard. Available from: <https://covid19.who.int/>. (Accessed 11 May 2021).
2. World Health Organization. Draft Landscape of COVID-19 Candidate Vaccines. Available from: <https://www.who.int/publications/m/item/draft-landscape-of-covid-19-candidate-vaccines>. (Accessed 11 May 2021).
3. Medicines and Healthcare Products Regulatory Agency. Regulatory approval of Pfizer-BioNTech vaccine for COVID-19. Available from: <https://www.gov.uk/government/publications/regulatory-approval-of-pfizer-biontech-vaccine-for-covid-19>. (Accessed 11 May 2021).

4. Medicines and Healthcare Products Regulatory Agency. Regulatory approval of AstraZeneca vaccine for COVID-19. Available from: <https://www.gov.uk/government/publications/regulatory-approval-of-covid-19-vaccine-astrazeneca>. (Accessed 11 May 2021).
5. Ju, B. *et al.* Human neutralizing antibodies elicited by SARS-CoV-2 infection. *Nature* **584**, 115–119 (2020).
6. Oliveira, S. C., de Magalhães, M. T. Q. & Homan, E. J. Immunoinformatic Analysis of SARS-CoV-2 Nucleocapsid Protein and Identification of COVID-19 Vaccine Targets. *Front. Immunol.* **11**, 1–10 (2020).
7. Department of Health and Social Care. Priority groups for coronavirus (COVID-19) vaccination - advice from the JCVI - 30 December 2020. Available from: <https://www.gov.uk/government/publications/priority-groups-for-coronavirus-covid-19-vaccination-advice-from-the-jcvi-30-december-2020>. (Accessed 11 May 2021).
8. Public Health England. Coronavirus (COVID-19) in the UK - Vaccinations. Available from: <https://coronavirus.data.gov.uk/details/vaccinations>. (Accessed 11 May 2021).
9. Polack, F. P. *et al.* Safety and Efficacy of the BNT162b2 mRNA Covid-19 Vaccine. *N. Engl. J. Med.* **383**, 2603–2615 (2020).
10. Voysey, M. *et al.* Safety and efficacy of the ChAdOx1 nCoV-19 vaccine (AZD1222) against SARS-CoV-2: an interim analysis of four randomised controlled trials in Brazil, South Africa, and the UK. *Lancet* **397**, 99–111 (2021).
11. Pritchard, E. *et al.* Impact of vaccination on SARS-CoV-2 cases in the community: a population-based study using the UK's COVID-19 Infection Survey. *medRxiv* (2021).
12. Vasileiou, E. *et al.* Interim findings from first-dose mass COVID-19 vaccination roll-out and COVID-19 hospital admissions in Scotland: a national prospective cohort study. *Lancet (London, England)* **397**, 1646–1657 (2021).
13. Levine-Tiefenbrun, M. *et al.* Initial report of decreased SARS-CoV-2 viral load after inoculation with the BNT162b2 vaccine. *Nat. Med.* (2021).
14. Shah, A. *et al.* Effect of vaccination on transmission of COVID-19: an observational study in healthcare workers and their households. *medRxiv* (2021).
15. Shrotri, M. *et al.* Vaccine Effectiveness of the First Dose of ChAdox1 nCoV-19 and BNT162b2 Against SARS-CoV-2 Infection in Residents of Long Term Care Facilities (VIVALDI Study). *SSRN Electron. J.* (2021).

16. Department of Health and Social Care. Optimising the COVID-19 vaccination programme for maximum short-term impact. Available from: <https://www.gov.uk/government/publications/prioritising-the-first-covid-19-vaccine-dose-jcvi-statement/optimising-the-covid-19-vaccination-programme-for-maximum-short-term-impact>. (Accessed 11 May 2021).
17. Docherty, A. B. *et al.* Features of 20 133 UK patients in hospital with covid-19 using the ISARIC WHO Clinical Characterisation Protocol: prospective observational cohort study. *BMJ* m1985 (2020).
18. Yates, T. *et al.* Obesity, ethnicity and risk of critical care, mechanical ventilation and mortality in patients admitted to hospital with COVID-19: Analysis of the ISARIC CCP-UK cohort. *Obesity* oby.23178 (2021).
19. McGurnaghan, S. J. *et al.* Risks of and risk factors for COVID-19 disease in people with diabetes: a cohort study of the total population of Scotland. *Lancet Diabetes Endocrinol.* **9**, 82–93 (2021).
20. Mathur, R. *et al.* Ethnic differences in SARS-CoV-2 infection and COVID-19-related hospitalisation, intensive care unit admission, and death in 17 million adults in England: an observational cohort study using the OpenSAFELY platform. *Lancet* **397**, 1711–1724 (2021).
21. Arnold, J., Winthrop, K. & Emery, P. COVID-19 vaccination and antirheumatic therapy. *Rheumatology* 1–7 (2021).
22. Angyal, A. *et al.* T-cell and antibody responses to first BNT162b2 vaccine dose in previously SARS-CoV-2-infected and infection-naïve UK healthcare workers: a multicentre, prospective, observational cohort study. *SSRN Electron. J.* (2021).
23. Eyre, D. W. *et al.* Quantitative SARS-CoV-2 anti-spike responses to Pfizer-BioNTech and Oxford-AstraZeneca vaccines by previous infection status. *medRxiv* (2021).
24. Tut, G. *et al.* Profile of Humoral and Cellular Immune Responses to Single BNT162b2 or ChAdOx1 Vaccine in Residents and Staff Within Residential Care Homes (VIVALDI Study). *SSRN Electron. J.* (2021).
25. Abu Jabal, K. *et al.* Impact of age, ethnicity, sex and prior infection status on immunogenicity following a single dose of the BNT162b2 mRNA COVID-19 vaccine: real-world evidence from healthcare workers, Israel, December 2020 to January 2021. *Eurosurveillance* **26**, 1–5 (2021).
26. Subbarao, S. *et al.* Robust antibody responses in 70 – 80-year-olds 3 weeks after the first or second doses of Pfizer / BioNTech COVID-19 vaccine , United Kingdom , January to February 2021. *Eurosurveillance* **26**, 1–6 (2021).

27. Wei, J. *et al.* The impact of SARS-CoV-2 vaccines on antibody responses in the general population in the United Kingdom. *medRxiv* (2021)
28. Hayward, A. *et al.* Risk factors, symptom reporting, healthcare-seeking behaviour and adherence to public health guidance: Protocol for Virus Watch, a prospective community cohort study. *medRxiv* (2020).
29. Muench, P. *et al.* Development and Validation of the Elecsys Anti-SARS-CoV-2 Immunoassay as a Highly Specific Tool for Determining Past Exposure to SARS-CoV-2. *J. Clin. Microbiol.* **58**, (2020).
30. Ainsworth, M. *et al.* Performance characteristics of five immunoassays for SARS-CoV-2: a head-to-head benchmark comparison. *Lancet Infect. Dis.* **20**, 1390–1400 (2020).
31. Public Health England. Evaluation of Roche Elecsys Anti-SARS-CoV-2 serology assay for the detection of anti-SARS-CoV-2 antibodies. Available from: [https://assets.publishing.service.gov.uk/government/uploads/system/uploads/attachment\\_data/file/891598/Evaluation\\_of\\_Roche\\_Elecsys\\_anti\\_SARS\\_CoV\\_2\\_PHE\\_200610\\_v8.1\\_FINAL.pdf](https://assets.publishing.service.gov.uk/government/uploads/system/uploads/attachment_data/file/891598/Evaluation_of_Roche_Elecsys_anti_SARS_CoV_2_PHE_200610_v8.1_FINAL.pdf). (Accessed 11 May 2021).
32. Poljak, M., Oštrbenk Valenčak, A., Štamol, T. & Seme, K. Head-to-head comparison of two rapid high-throughput automated electrochemiluminescence immunoassays targeting total antibodies to the SARS-CoV-2 nucleoprotein and spike protein receptor binding domain. *J. Clin. Virol.* **137**, (2021).
33. Riestler, E. *et al.* Performance evaluation of the Roche Elecsys Anti-SARS-CoV-2 S immunoassay. *medRxiv* (2021).
34. Roche Diagnostics. Press release: Roche launches new quantitative antibody test to measure SARS-CoV-2 antibodies, to support the evaluation of vaccines. Available from: <https://www.roche.com/media/releases/med-cor-2020-09-18b.htm>. (Accessed 11 May 2021).
35. Ward, H. *et al.* REACT-2 Round 5: increasing prevalence of SARS-CoV-2 antibodies demonstrate impact of the second wave and of vaccine roll-out in England. *medRxiv* (2021).
36. Walsh, E. E. *et al.* Safety and Immunogenicity of Two RNA-Based Covid-19 Vaccine Candidates. *N. Engl. J. Med.* **383**, 2439–2450 (2020).
37. Kontopoulou, K. *et al.* Immunogenicity after the First Dose of the BNT162b2 mRNA COVID-19 Vaccine: Real-World Evidence from Greek Healthcare Workers. *SSRN Electron. J.* (2021).
38. Müller, L. *et al.* Age-dependent immune response to the Biontech/Pfizer BNT162b2 COVID-19 vaccination. *Clin. Infect. Dis.* (2021) doi:10.1093/cid/ciab381.

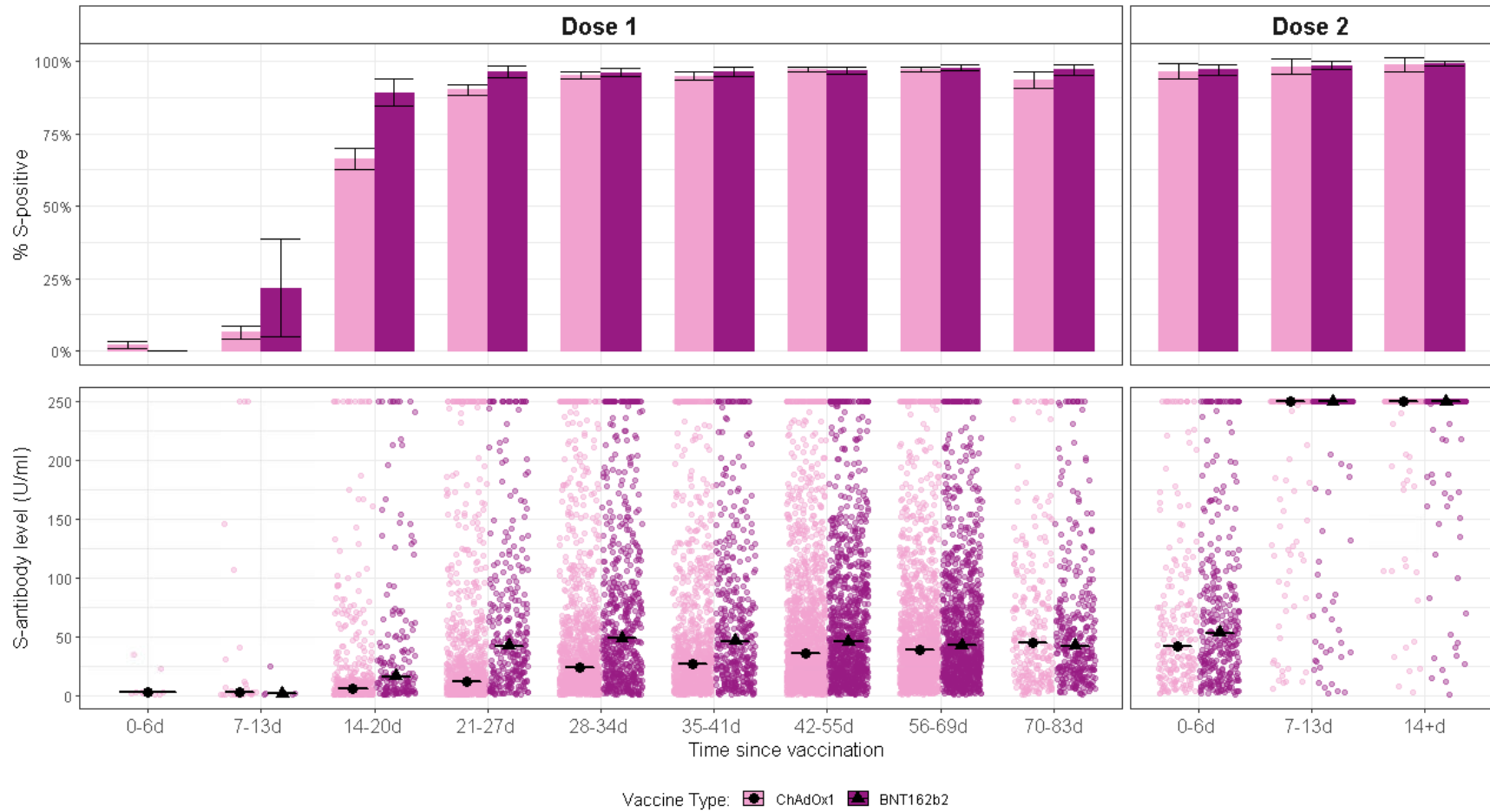
39. Collier, D. A. *et al.* Age-Related Heterogeneity in Neutralising Antibody Responses to SARS-CoV-2 Following BNT162b2 Vaccination. *SSRN Electron. J.* (2021).
40. Ramasamy, M. N. *et al.* Safety and immunogenicity of ChAdOx1 nCoV-19 vaccine administered in a prime-boost regimen in young and old adults (COV002): a single-blind, randomised, controlled, phase 2/3 trial. *Lancet* **396**, 1979–1993 (2020).
41. Yelin, I. *et al.* Associations of the BNT162b2 COVID-19 vaccine effectiveness with patient age and comorbidities. *medRxiv* (2021).
42. Dagan, N. *et al.* BNT162b2 mRNA Covid-19 Vaccine in a Nationwide Mass Vaccination Setting. *N. Engl. J. Med.* 1–12 (2021) .
43. Monin, L. *et al.* Safety and immunogenicity of one versus two doses of the COVID-19 vaccine BNT162b2 for patients with cancer: interim analysis of a prospective observational study. *Lancet. Oncol.* 1–14 (2021).
44. Herishanu, Y. *et al.* Efficacy of the BNT162b2 mRNA COVID-19 Vaccine in Patients with Chronic Lymphocytic Leukemia. *Blood* (2021).
45. Geisen, U. M. *et al.* Immunogenicity and safety of anti-SARS-CoV-2 mRNA vaccines in patients with chronic inflammatory conditions and immunosuppressive therapy in a monocentric cohort. *Ann. Rheum. Dis.* 1–6 (2021).
46. Deepak, P. *et al.* Glucocorticoids and B Cell Depleting Agents Substantially Impair Immunogenicity of mRNA Vaccines to SARS-CoV-2. *medRxiv* (2021) .
47. Boyarsky, B. J. *et al.* Immunogenicity of a Single Dose of SARS-CoV-2 Messenger RNA Vaccine in Solid Organ Transplant Recipients. *JAMA - J. Am. Med. Assoc.* 2–4 (2021).
48. Rabinowich, L. *et al.* Low immunogenicity to SARS-CoV-2 vaccination among liver transplant recipients. *J. Hepatol.* (2021).
49. Marinaki, S. *et al.* Immunogenicity of SARS-CoV-2 BNT162b2 vaccine in solid organ transplant recipients. *Am. J. Transplant.* ajt.16607 (2021).
50. Wyllie, D. *et al.* SARS-CoV-2 responsive T cell numbers and anti-Spike IgG levels are both associated with protection from COVID-19: A prospective cohort study in keyworkers. *medRxiv* (2021).
51. Singanayagam, A. *et al.* Duration of infectiousness and correlation with RT-PCR cycle threshold values in cases of COVID-19, England, January to May 2020. *Eurosurveillance* **25**, (2020).



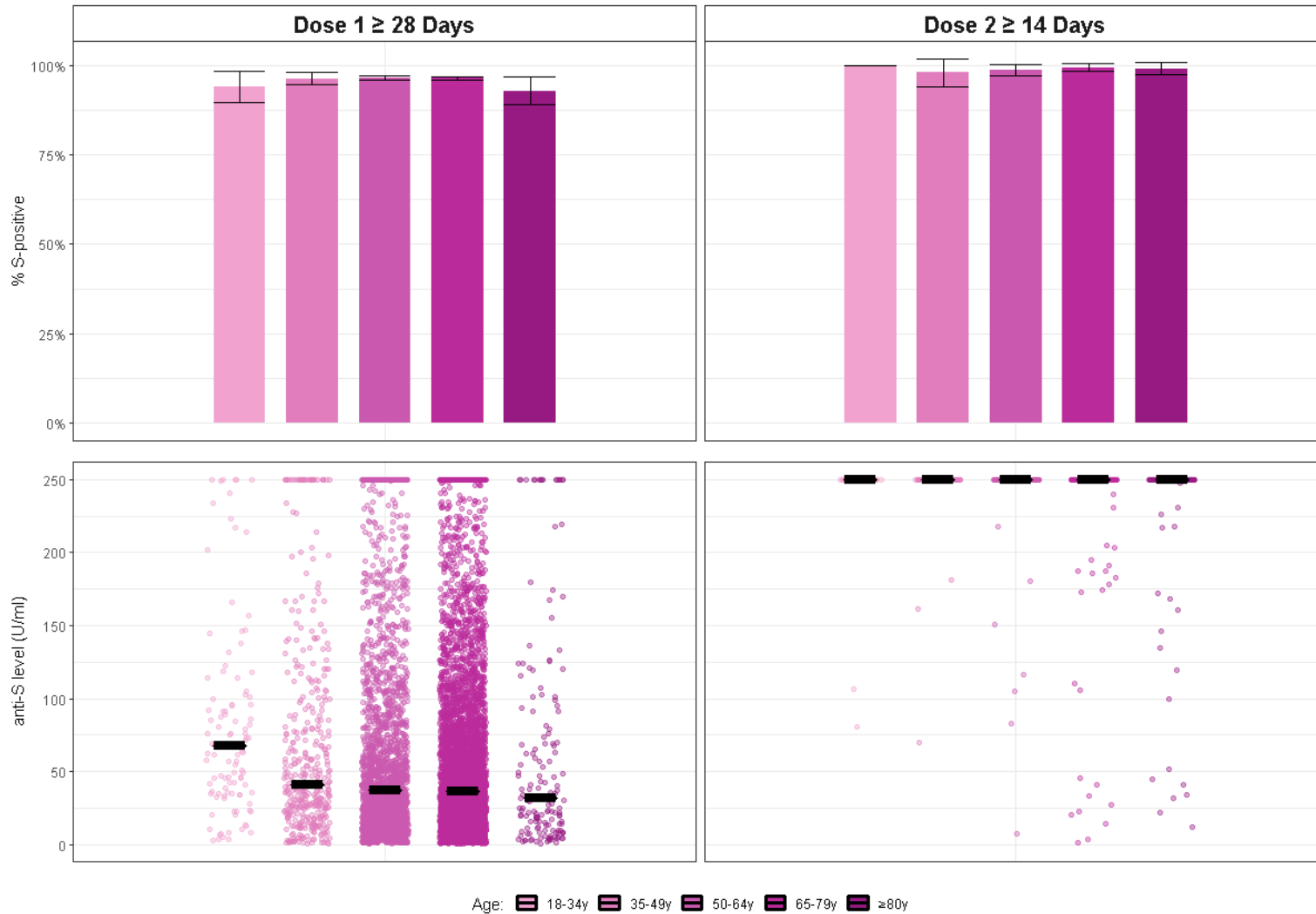
52. Lennard, Y. L. *et al.* SARS-CoV-2 infectivity by viral load, S gene variants and demographic factors and the utility of lateral flow devices to prevent transmission. *medRxiv* (2021).
53. Kalimuddin, S. *et al.* Early T cell and binding antibody responses are associated with COVID-19 RNA vaccine efficacy onset. *Med* 1–7 (2021).
54. McMahan, K. *et al.* Correlates of protection against SARS-CoV-2 in rhesus macaques. *Nature* **590**, 630–634 (2021).
55. Rydzynski Moderbacher, C. *et al.* Antigen-Specific Adaptive Immunity to SARS-CoV-2 in Acute COVID-19 and Associations with Age and Disease Severity. *Cell* **183**, 996-1012.e19 (2020).
56. Poland, G. A., Ovsyannikova, I. G. & Kennedy, R. B. SARS-CoV-2 immunity: review and applications to phase 3 vaccine candidates. *Lancet* **396**, 1595–1606 (2020).
57. Baker, D. *et al.* COVID-19 vaccine-readiness for anti-CD20-depleting therapy in autoimmune diseases. *Clin. Exp. Immunol.* **202**, 149–161 (2020).

## Figures

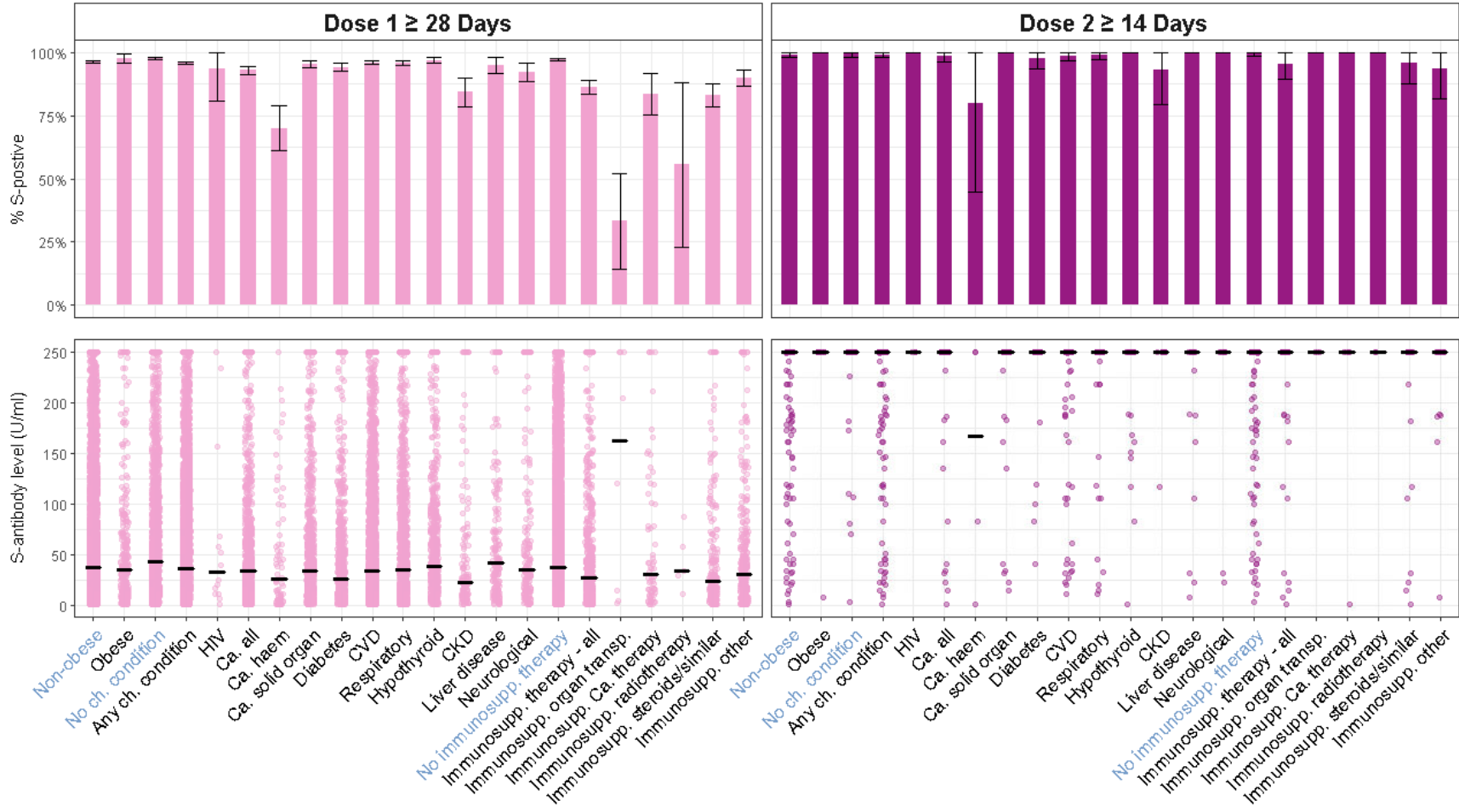
**Figure 1:** S-antibody positive rates (as per  $\geq 0.8$  U/ml cutoff) and S-antibody levels (U/ml) by vaccine type and time since vaccination (black lines indicate median values).



**Figure 2:** S-antibody positive rates (as per  $\geq 0.8$  U/ml cutoff) and S-antibody levels (U/ml) by age group at  $\geq 28$  days following the first dose and  $\geq 14$  days following the second dose (black lines indicate median values).



**Figure 3:** S-positive rates (as per  $\geq 0.8$  U/ml cutoff) and S-antibody levels (U/ml) by severe obesity, chronic condition, and immunosuppressive therapy status at  $\geq 28$  days following the first dose and  $\geq 14$  days following the second dose (all ages; comparator groups given in blue; black lines indicate median values).



## Tables

**Table 1.** Demographic and clinical characteristics of individuals and samples included in the analysis.

<b>Table 1</b>	<b>Individuals</b>	<b>Samples</b>
	<i>N (%)</i>	<i>N (%)</i>
<b>Total</b>	8,517	13,232
Female sex	4,876 (57%)	7,650 (58%)
Median age, years (IQR)	65 (58, 71)	66 (59, 71)
<b>Age group</b>		
18-34y	181 (2.1%)	242 (1.8%)
35-49y	641 (7.5%)	857 (6.5%)
50-64y	3,089 (36%)	4,576 (35%)
65-79y	4,386 (51%)	7,203 (54%)
80+y	219 (2.6%)	354 (2.7%)
<b>Ethnicity</b>		
White	8,287 (97%)	12,912 (98%)
Black	20 (0.2%)	27 (0.2%)
South Asian	90 (1.1%)	126 (1.0%)
Other Asian	42 (0.5%)	60 (0.5%)
Mixed	43 (0.5%)	61 (0.5%)

Other/Missing	34 (0.4%)	46 (0.3%)
<b>Chronic health conditions</b>		
One or more chronic condition(s)		
Cancer - Any	881 (10%)	1,443 (11%)
Cancer - Haematological	74 (0.9%)	127 (1.0%)
Cancer - Solid Organ	807 (9.5%)	1,316 (9.9%)
HIV	15 (0.2%)	24 (0.2%)
Respiratory condition	1,540 (18%)	2,393 (18%)
Diabetes	706 (8.3%)	1,111 (8.4%)
Cardiovascular disease	2,914 (34%)	4,644 (35%)
Hypothyroidism	656 (7.7%)	1,026 (7.8%)
Chronic kidney disease	134 (1.6%)	223 (1.7%)
Liver disease	176 (2.1%)	277 (2.1%)
Neurological condition	200 (2.3%)	314 (2.4%)
Severe obesity (BMI 40+)	342 (4.0%)	511 (3.9%)
Immunosuppressive therapy - Any	579 (6.8%)	928 (7.0%)
Immunosuppressive therapy - Steroids or similar	218 (2.6%)	348 (2.6%)

Immunosuppressive therapy – Cancer chemotherapy or targeted therapy	66 (0.8%)	113 (0.9%)
Immunosuppressive therapy - Post- organ transplant	21 (0.2%)	35 (0.3%)
Immunosuppressive therapy – Radiotherapy for cancer	8 (<0.1%)	13 (<0.1%)
Immunosuppressive therapy - Other	306 (3.6%)	483 (3.6%)
<b>Vaccination</b>		
BNT162b2	3,099 (36.4%)	5,008 (37.8%)
ChAdOx1	5,342 (62.7%)	8,115 (61.3%)
Other vaccine	40 (0.5%)	56 (0.4%)
Missing	36 (0.4%)	54 (0.4%)
Dose 1 sample	NA	11,645 (88%)
28+ days following dose 1	NA	8,549 (64.6%)
Dose 2 sample	NA	1,409 (10.6%)
14+ days following dose 2	NA	542 (4.1%)

**Table 2.** Key demographic and clinical features of individuals vaccinated with BNT162b2 and ChAdOx1, and the samples from these individuals.

Table 2	BNT162b2 (Pfizer/BioNTech)		ChAdOx1 (Oxford/AstraZeneca)	
	Individuals	Samples	Individuals	Samples
	<i>N</i> (%)	<i>N</i> (%)	<i>N</i> (%)	<i>N</i> (%)
Total	3,099	5,008	5,342	8,115
Female sex	1,775 (57%)	2,884 (58%)	3,064 (57%)	4,712 (58%)
Median age, years (IQR)	68 (61, 73)	68 (62, 73)	64 (57, 70)	65 (58, 70)
White ethnicity	2,999 (97%)	4,858 (97%)	5,213 (98%)	7,946 (98%)
No chronic condition	748 (24%)	1,214 (24%)	1,740 (33%)	2,544 (31%)
Cancer - Any	361 (12%)	612 (12%)	515 (9.6%)	823 (10%)
Immunosuppressive therapy - Any	245 (7.9%)	404 (8.1%)	333 (6.2%)	523 (6.4%)
Respiratory condition	583 (19%)	935 (19%)	948 (18%)	1,445 (18%)
Diabetes	303 (9.8%)	478 (9.5%)	401 (7.5%)	630 (7.8%)
Cardiovascular disease	1,223 (39%)	1,992 (40%)	1,672 (31%)	2,623 (32%)
Severe obesity (BMI 40+)	115 (3.7%)	174 (3.5%)	225 (4.2%)	334 (4.1%)
<b><i>Time since vaccination</i></b>				
Dose 1 - any time	NA	3,948	NA	7,631
Median (IQR) days since dose 1	NA	48 (33, 62)	NA	35 (23, 52)
Dose 1 - 28+ days	NA	3,430 (68.5%)	NA	5,075 (62.5%)
Median (IQR) days since dose 1 if 28+ days	NA	51 (39, 63)	NA	46 (35, 59)



Dose 2 - any time	NA	997	NA	395
Median (IQR) days since dose 2	NA	12 (5, 28)	NA	6 (2, 12)
Dose 2 - 14+ days	NA	449 (9.0%)	NA	81 (1.0%)
Median (IQR) days since dose 2 if 14+ days	NA	32 (20, 58)	NA	20 (16, 25)

**Table 3.** Numbers and proportions of samples positive for S-antibodies ( $\geq 0.8$  U/ml), and average S-antibody levels, by vaccine type and time since vaccination.

Table 3	BNT162b2 (Pfizer/BioNTech)			ChAdOx1 (Oxford/AstraZeneca)		
	S-positive		Anti-S levels	S-positive		Anti-S levels
	N	% (95% CI)	Median (IQR)	N	% (95% CI)	Median (IQR)
<b>Dose 1</b>						
0-6d	0	0.00 (0.00, 20.92)	0 (0, 0)	9	2.00 (0.97, 3.87)	0 (0, 0)
7-13d	5	21.74 (8.29, 44.21)	0 (0, 0)	31	6.30 (4.41, 8.96)	0 (0, 0)
14-20d	158	89.27 (83.52, 93.25)	13 (3, 48)	450	66.27 (62.56, 69.80)	2 (0, 9)
21-27d	288	96.32 (93.32, 98.05)	39 (14, 89)	842	90.15 (88.01, 91.95)	10 (3, 29)
28-34d	578	96.17 (94.22, 97.50)	47 (17, 106)	1073	95.21 (93.75, 96.35)	21 (7, 55)
35-41d	408	96.45 (94.09, 97.93)	45 (18, 95)	875	94.80 (93.11, 96.10)	25 (10, 58)
42-55d	966	96.79 (95.45, 97.76)	44 (19, 92)	1392	97.21 (96.18, 97.97)	34 (14, 73)
56-69d	1008	97.77 (96.62, 98.55)	42 (20, 83)	1271	97.25 (96.17, 98.04)	37 (17, 69)
70-83d	331	97.07 (94.50, 98.50)	41 (20, 73)	251	93.66 (89.86, 96.15)	40 (14, 85)
<b>28+ days</b>	3325	96.97 (96.34, 97.49)	44 (19, 91)	4878	96.12 (95.55, 96.62)	30 (12, 67)
<b>Dose 2</b>						

0-6d	324	97.01 (94.39, 98.47)	51 (21, 98)	194	96.52 (92.66, 98.47)	39 (17, 78)
7-13d	211	98.60 (95.62, 99.64)	$\geq 250$ ( $\geq 250$ , $\geq 250$ )	110	98.21 (93.06, 99.69)	$\geq 250$ (123, $\geq 250$ )
<b>14+ days</b>	445	99.11 (97.57, 99.71)	$\geq 250$ ( $\geq 250$ , $\geq 250$ )	80	98.77 (92.37, 99.94)	$\geq 250$ (203, $\geq 250$ )

**Table 4.** Numbers and proportions of samples positive for S-antibodies ( $\geq 0.8$  U/ml), and average S-antibody levels, at 28+ days since the first or 14+ days since the second dose of vaccination, by demographic and clinical characteristics (all ages).

Table 4	Dose 1 $\geq 28$ days			Dose 2 $\geq 14$ days		
	S-positive		Anti-S level	S-positive		Anti-S level
	<i>N</i>	% (95% CI)	Median (IQR)	<i>N</i>	% (95% CI)	Median (IQR)
<b>Overall</b>	8,548	96.42 (96, 96.79)	36 (14, 78)	537	99.08 (97.8, 99.62)	$\geq 250$ ( $\geq 250$ , $\geq 250$ )
<b>Sex</b>						
Male	3,487	94.99 (94.23, 95.65)	27 (11, 61)	213	99.07 (96.33, 99.77)	$\geq 250$ ( $\geq 250$ , $\geq 250$ )
Female	4,744	97.49 (97.01, 97.90)	42 (18, 90)	322	99.08 (97.17, 99.70)	$\geq 250$ ( $\geq 250$ , $\geq 250$ )
<b>Ethnicity*</b>						
White	8,058	96.40 (95.98, 96.78)	35 (14, 77)			
South Asian	71	98.61 (90.51, 99.81)	64 (21, 158)			
Other Asian	36	94.74 (80.51, 98.74)	67 (36, 120)			
Black	12	100	39 (17, 136)			
Mixed	38	100	68 (30, 179)			
<b>Age-group</b>						
18-34	110	94.02 (87.89, 97.14)	63 (34, 99)	20	100	$\geq 250$ ( $\geq 250$ , $\geq 250$ )
35-49	404	96.42 (94.14, 97.83)	38 (19, 88)	50	98.04 (86.80, 99.74)	$\geq 250$ ( $\geq 250$ , $\geq 250$ )

50-64	2,305	96.56 (95.75, 97.23)	36 (15, 82)	166	98.81 (95.32, 99.71)	≥250 (≥250, ≥250)
65-79	5,266	96.52 (96.00, 96.97)	35 (14, 75)	189	99.47 (96.32, 99.93)	≥250 (≥250, ≥250)
80+	156	92.86 (87.00, 95.92)	26 (8, 80)	112	99.12 (93.87, 99.88)	≥250 (≥250, ≥250)
<b>Health Conditions</b>						
No chronic condition	2,205	97.65 (96.94, 98.20)	41 (18, 87)	159	99.38 (95.64, 99.91)	≥250 (≥250, ≥250)
Any chronic condition	6,037	95.98 (95.46, 96.44)	34 (13, 74)	378	98.95 (97.24, 99.61)	≥250 (≥250, ≥250)
Cancer - Any	938	92.96 (91.21, 94.39)	31 (11, 64)	80	98.77 (91.53, 99.83)	≥250 (≥250, ≥250)
Cancer - Haematological	70	70.00 (60.21, 78.25)	7 (0, 49)	<5	80.00 (15.21, 98.89)	83 (1, ≥250)
Cancer - Solid Organ	868	95.49 (93.93, 96.66)	32 (13, 68)	76	100	≥250 (≥250, ≥250)
HIV	14	93.33 (60.32, 99.23)	24 (11, 63)	<5	100	≥250 (≥250, ≥250)
Respiratory condition	1,519	95.96 (94.87, 96.82)	32 (13, 72)	97	98.98 (92.95, 99.86)	≥250 (≥250, ≥250)
Diabetes	733	94.22 (92.34, 95.66)	22 (8, 57)	45	97.83 (85.45, 99.71)	≥250 (≥250, ≥250)
Cardiovascular disease	3,058	95.83 (95.08, 96.47)	32 (13, 72)	196	98.49 (95.40, 99.52)	≥250 (≥250, ≥250)
Hypothyroidism	656	96.90 (95.29, 97.97)	37 (16, 83)	43	100	≥250 (≥250, ≥250)
Chronic kidney disease	128	84.21 (77.46, 89.22)	18 (5, 56)	13	92.86 (58.01, 99.19)	≥250 (≥250, ≥250)
Liver disease	171	95.00 (90.63, 97.39)	40 (14, 93)	17	100	≥250 (161, ≥250)
Neurological condition	178	92.23 (87.47, 95.28)	31 (11, 70)	12	100	≥250 (≥250, ≥250)
No severe obesity	7,952	96.38 (95.95, 96.76)	36 (15, 78)	520	99.05 (97.73, 99.60)	≥250 (≥250, ≥250)
Severe obesity (BMI 40+)	290	97.64 (95.13, 98.88)	33 (13, 73)	17	100	≥250 (≥250, ≥250)

No immunosuppressive therapy	7,681	97.26 (96.88, 97.60)	36 (15, 80)	494	99.40 (98.14, 99.81)	≥250 (≥250, ≥250)
Immunosupp. - Any	561	86.18 (83.30, 88.62)	20 (5, 56)	43	95.56 (83.34, 98.93)	≥250 (186, ≥250)
Immunosupp. – cancer chemotherapy or targeted therapy	66	83.54 (73.51, 90.28)	23 (4, 77)	5	100	≥250 (≥250, ≥250)
Immunosupp. - Steroids or similar	205	83.00 (77.76, 87.20)	17 (3, 49)	23	95.83 (73.54, 99.48)	≥250 (114, ≥250)
Immunosupp. - Post- organ transplant	8	33.33 (16.95, 55.05)	0.4-250	<5	100	≥250 (n<5)
Immunosupp. – Radiotherapy for cancer	5	55.56 (21.02, 85.45)	0.4-86.9	<5	100	≥250 (n<5)
Immunosupp. - Other	304	89.94 (86.24, 92.73)	24 (6, 58)	15	93.75 (62.40, 99.27)	≥250 (187, ≥250)

*\*Ethnicity dose 2 figures are suppressed due to very small numbers in most categories.*

**Table 5.** Differences in S-antibody levels (U/ml) between demographic and clinical groups, following a single vaccine dose, with vaccine type and clinical categories restricted to the 65-79 years age group.

<b>Table 5</b>	<b>N</b>	<b>S-antibody level Median (IQR)</b>	<b>p-value for difference (*<math>p &lt; 0.0025</math>)</b>
<b>Age groups at 28+ days (dose 1)**</b>			
			0.0001*
18-34y	117	63.4 (34.2, 99.35)	
35-49y	419	38.5 (18.97, 88.5)	
50-64y	2,387	35.61 (14.63, 81.69)	
65-79y	5,456	34.6 (14.11, 75.45)	
80+y	168	26.13 (8.34, 80.4)	
<b>Age 65-79y</b>			
<b>Vaccine type at 28+ days (dose 1)*</b>			
			<0.0001*
BNT1612b2	2339	41.14 (17.8, 84.8)	
ChAdOx1	3094	30.21 (11.9, 67.16)	
<b>Vaccine type at 42+ days (dose 1)*</b>			
			0.0004*
BNT1612b2	1588	40.5 (18.64, 81.87)	
ChAdOx1	2031	35.9 (15, 73.36)	
<b>Vaccine type at 56+ days (dose 1)*</b>			
			0.0494
BNT1612b2	1007	39.39 (18.9, 75.6)	
ChAdOx1	1242	36.79 (16.44, 73)	

<i>28+ days (dose 1) and age 65-79y</i>			
<b>Sex*</b>			
			<0.0001*
Male	2517	25.9 (10.3, 59.07)	
Female	2935	42.73 (18.7, 88.71)	
<b>Ethnicity**</b>			
			0.0005*
White	5367	34.31 (14, 74.36)	
South Asian	39	63.5 (26.39, 191.9)	
Other Asian	17	69.97 (36.07, 103.2)	
Black	<5	46.1 (19.25, 143)	
Mixed	14	103.3 (29.6, 223.1)	
<b>Severe obesity (BMI (40+))*</b>			
			0.162
Yes	128	26.88 (11.95, 70.7)	
No	5328	34.9 (14.25, 75.55)	
<b>Any immunosuppressive therapy*</b>			
			<0.0001*
Yes	370	21.7 (3.9, 60)	
No	5086	35.6 (14.8, 76.2)	
<b>Any chronic condition*</b>			
			<0.0001*
None	1235	41.2 (17.8, 87.02)	
1 or more	4221	33 (13.1, 72.09)	



<b>Any cancer diagnosis*</b>			0.0001*
Yes	739	30.1 (11.1, 61.51)	
No	4717	35.7 (14.6, 76.9)	
<b>Cancer type*</b>			<0.0001*
Haematological malignancy	72	7.48 (0.4, 49.05)	
Solid organ cancer	667	31.68 (13, 62.16)	
<b>Any respiratory condition*</b>			0.0046
Yes	959	31.5 (11.9, 70.5)	
No	4497	35.5 (14.67, 77.3)	
<b>Diabetes*</b>			<0.0001*
Yes	526	22.32 (8.14, 56)	
No	4930	36.01 (15, 77.34)	
<b>Cardiovascular disease*</b>			0.0002*
Yes	2401	32.1 (12.93, 70.9)	
No	3055	36.7 (15.12, 78.33)	
<b>Hypothyroidism*</b>			0.0598
Yes	454	37.3 (16.5, 77.9)	
No	5002	34.31 (13.85, 75.07)	

<b>Chronic kidney disease*</b>			0.0057
Yes	96	19.94 (5.98, 72.31)	
No	5360	34.9 (14.38, 75.48)	
<b>Any liver disease*</b>			0.6652
Yes	94	40.16 (10.9, 90.7)	
No	5362	34.54 (14.14, 75.34)	
<b>Neuro*</b>			0.0476
Yes	99	27.62 (7.6, 62.9)	
No	5357	34.85 (14.3, 75.64)	
<b>28+ days (dose 1) and age 35-49 years</b>			
<b>HIV*</b>			0.1775
Yes	9	20.5 (11.43, 52.58)	
No	410	38.94 (19.04, 89)	

\*Mann-Whitney U test (Wilcoxon rank-sum test) for two groups

\*\*Kruskal-Wallis test for multiple groups