

Transmission roles of symptomatic and asymptomatic COVID-19 cases: a modeling study

Authors:

Jianbin Tan^{1†}, Yang Ge^{2†}, Leonardo Martinez³, Jimin Sun⁴, Changwei Li⁵, Adrianna Westbrook², Enfu Chen⁴, Jinren Pan⁴, Yang Li⁶, Feng Ling⁴, Zhiping Chen^{4‡}, Hui Huang^{1‡}, Ye Shen^{2‡}.

Author affiliations:

1 Sun Yat-Sen University, School of Mathematics, Guangzhou, China;

2 University of Georgia, College of Public Health, Department of Epidemiology and Biostatistics, Athens, Georgia, United States;

3 Boston University, Department of Epidemiology, Boston, United States;

4 Zhejiang Provincial Center for Disease Control and Prevention, Hangzhou, China;

5 Tulane University School of Public Health and Tropical Medicine, Department of Epidemiology, New Orleans, Louisiana, United States;

6 Renmin University of China, School of Statistics, Beijing, China.

† Joint first authors; ‡ Joint corresponding Author.

1 **Key Points**

2 *Question:*

3 What is the transmissibility of COVID-19 asymptomatic and symptomatic cases, respectively?

4 To date, they have not been well quantified in existing literature.

5

6 *Findings:*

7 The transmissibility of asymptomatic and symptomatic COVID-19 increases with patient age.

8 The asymptomatic cases had a 66.72% lower transmissibility rate than symptomatic cases.

9

10 *Meaning:*

11 The transmissibility of asymptomatic COVID-19 cases is not low. Asymptomatic cases are
12 harder to detect compared to symptomatic cases. Consequently, the burden of asymptomatic
13 transmission could potentially dominate the spreading in certain scenarios.

14 **Background**

15

16 COVID-19, caused by the novel coronavirus (SARS-CoV-2),[1] is a great threat to human
17 health.[2] Nonpharmaceutical interventions such as social distancing, case isolation and contact
18 quarantines are the most common tools for suppressing the pandemic in many countries where
19 vaccine supplements are limited.[3–5] However, much remains unclear regarding SARS-CoV-2
20 transmissibility which undermined the efforts for tailored interventions.[6,7] COVID-19 patients
21 may present and remain pre-symptomatic, asymptomatic, or symptomatic and transmission may
22 occur at each of these disease states.[8–10] Unlike the transmission caused by symptomatic
23 cases, pre-symptomatic and asymptomatic transmission are hard to detect and difficult to
24 measure as many surveillance systems rely on symptom-based population screening.[8,11–13]
25 Previous case studies suggested that asymptomatic COVID-19 individuals are less infectious
26 than symptomatic cases.[14,15] However, asymptomatic cases may spread for a longer period
27 due to reduced efficiency in case detection.[16] Several studies investigated the silent
28 transmission of SARS-CoV-2, but presented contradictory conclusions with estimated burden
29 ranged from 3% to 79%.[16–18]

30

31 Without sufficient follow-up time, asymptomatic and pre-symptomatic cases are often
32 indistinguishable. Consequently, studies using population-level data to estimate of age-specific
33 transmission and susceptibility parameters commonly falls short of accuracy which potentially
34 explains for the heterogeneous findings from different studies.[19–21] Common issues were
35 modeling without data on observed asymptomatic infection[16–18,22] and inclusion of
36 pre-symptomatic cases as part of an asymptomatic classification,[19–21] . Meanwhile, few
37 studies assessing asymptomatic infectiousness and viral load with limited sample sizes fail to
38 capture the transmission dynamics.[14,15,23–30] No studies to date have attempted to combine
39 reliable case symptom classification with age-dependent transmissibility, social contact
40 measures, and susceptibility parameters at the population level to learn the transmission
41 dynamics. However, a comprehensive understanding of the age-specific symptomatic and
42 asymptomatic transmission dynamics at the population level is essential to the evaluation of an
43 epidemic and the creation of responding health policies.

44

45 In this study, we report on a longitudinal cohort of all diagnosed COVID-19 infections, between
46 January 8th and February 23rd, 2020, from Zhejiang province, China. All patients without initial
47 symptoms were followed by at least 90 days to distinguish between asymptomatic and
48 pre-symptomatic cases, an essential procedure rarely implemented by previous studies to ensure
49 reliable classification of case symptoms. We then built age-stratified compartmental models to
50 study the age-dependent population-level transmission roles of symptomatic and asymptomatic
51 COVID-19 cases.

52 **Methods**

53

54 *Data sources*

55 Zhejiang province is an eastern coastal province adjacent to Shanghai city with a population of
56 approximately 54 million individuals.[31] The first and only major wave of the COVID-19
57 epidemic in Zhejiang began on early January, 2020 and continued until late February, 2020 after
58 which only sporadic single-case events were observed. We included information from all
59 confirmed cases in this major wave (a total of 1342 cases), as well as a follow-up investigation
60 related to all detected asymptomatic infections to distinguish between asymptomatic and
61 pre-symptomatic cases. Individual-level data related to the symptom onset of symptomatic
62 infections, as well as COVID-19 confirmation dates and ages of both symptomatic and
63 asymptomatic cases were collected. On January 23rd ,2020, the provincial government changed
64 its infectious disease alert category to the highest level and, on February 1st, began a
65 comprehensive set of interventions.[32] As of April 10th, 2020, the date in which we restricted
66 our data for this analysis, no additional outbreak had been observed. Trained health professionals
67 investigated each confirmed case with a predefined questionnaire by which basic health and
68 demographic information were collected.

69

70 *Definition of symptomatic and asymptomatic cases*

71 All confirmed cases and their close contacts were isolated or quarantined after being identified
72 through contact tracing. During the isolation/quarantine period, cases and their contacts received
73 regular testing and daily symptom screening for fever, cough, and shortness of breath. Tests for
74 case confirmation were conducted using reverse transcription polymerase chain reaction
75 (RT-PCR) or viral genome sequencing on samples from throat swabs (oropharynx and
76 nasopharynx). If a case or contact had a positive test result but without any symptoms, they
77 would be temporarily classified as an asymptomatic/pre-symptomatic case at the time. All cases
78 were followed for at least 90 days after their initial positive test to distinguish between
79 asymptomatic and pre-symptomatic cases. Among these subjects, those who developed
80 symptoms later would receive a final classification as a symptomatic case. Others who had never
81 developed any symptoms between their initial positive test and first subsequent negative PCR
82 test would be classified as asymptomatic cases.

83

84 *Model structure*

85 We divided the total population of Zhejiang province into seven age groups (Figure 1). To
86 consider transmission related to symptomatic and asymptomatic infections among different age
87 groups, our model contained 8 compartments for the i^{th} age group: susceptible population (S^i),
88 exposed contacts (E^i), pre-symptomatic cases (I_{ps}^i , infected but have not yet developed
89 symptoms), symptomatic cases (I_s^i), asymptomatic cases (I_a^i , infected but asymptomatic till
90 confirmed/recovery), and removed/recovery groups (R_{cs}^i , R_{ca}^i , R_h^i). We assumed new infections
91 were driven by transmission from compartments of I_{ps}^i , I_s^i and I_a^i in all age groups.

92

93 Asymptomatic cases (I_a^i) were infections without typical symptoms which were often
94 untraceable in the clinical survey and, therefore, their contribution to population-level
95 transmission would be underestimated. To account for this, we assumed only a proportion of
96 asymptomatic infections were detected (R_{ca}^i), while others (R_h^i) would be unconfirmed. We were
97 able to observe disease confirmation date but not the date of infection for the period from cases
98 becoming infectious to the diagnosis of COVID-19 (\mathcal{A}_1^i) in those with confirmed asymptomatic
99 infection. Based on the virus shedding pattern of asymptomatic infections reported in previous
100 studies,[13,15,33,34] we assumed that this period should be less than 30 days, after which virus
101 shedding generally ceases, and infection is no longer detectable through pathogen-specific
102 testing.

103

104 To identify age-varying transmissibility and susceptibility,[22] we assumed a time-varying curve
105 for the average contact numbers of i^{th} age group with j^{th} age group (c_t^{ij}), which is estimated
106 with the contact matrix between age groups through surveys conducted in Shanghai.[35,36] We
107 separate the probability of infection into two components: transmissibility (T) and
108 susceptibility (s). We define transmissibility (T) as the infectiousness of one case. Similarly,
109 we define susceptibility (s) as the probability of acquiring infection from an infectious case
110 ($T = 1$). Therefore, $s = 0$ corresponds to a situation in which the susceptible individuals are
111 immune to the disease. We assumed that case transmissibility would depend on age and the
112 presence of symptoms. To capture the age-dependent pattern, B splines basis functions were

113 used to model the variability in age-varying transmissibility smoothly. Finally, the
114 compartmental model was fitted to the daily new symptomatic and asymptomatic cases in
115 Zhejiang province for each age group with Markov Chain Monte Carlo (MCMC) algorithm.

116

117 All analyses were implemented in R version 3.5.1. Packages of deSolve,[37] extraDistr,[38] and
118 splines[39] were used for model fitting. Unless stated otherwise, the medians of the posterior
119 distributions were used as the point estimators of parameters and simulated numbers.

120

121 Ethics approval

122 The research protocol was approved by the institutional review board at the Zhejiang Provincial
123 Center for Disease Control and Prevention. The study was based on deidentified data.

124

125 **Results**

126

127 Transmissibility

128 The estimated transmissibility presented an age-dependent difference between symptomatic and
129 asymptomatic infections (Figure 2). While the transmission of symptomatic cases monotonically
130 increased with increasing age, the transmissibility of asymptomatic infection remained low until
131 age 40, after which point it significantly increased with increasing age. The age-varying ratios of
132 the two kinds of transmissibility indicated asymptomatic cases were, on average, 66.72% lower
133 in transmission than symptomatic cases. However, the difference between the two types of
134 infections was not as big in those aged 0-20 and 60+ years old, but became more obvious in the
135 middle-aged group where the ratios were as low as 24.42% and 23.38% for those aged 30-40 and
136 40-50 years old, respectively.

137

138 The proportion of asymptomatic cases

139 In Figure 3, the proportion of asymptomatic cases ($\frac{R_h^i + R_{ca}^i}{R_h^i + R_{cs}^i + R_{ca}^i}$) estimated by our model was much
140 larger than what was observed in the data. The average proportion of asymptomatic cases was
141 28.22% (95%CI: 22.97% - 34.56%) of the total counts of cases in our model estimation, but was
142 9.24% in the observed data ($\frac{R_{ca}^i}{R_{cs}^i + R_{ca}^i}$). In our estimation from the empirical data, the highest
143 proportion of asymptomatic case was among 0-10 (60.18% (95%CI: 53.61% - 66.99%)) and
144 10-20 (57.64% (95%CI: 47.45% - 66.98%)) years old groups. For asymptomatic cases, we
145 further estimated the proportion of cases that failed to be detected ($\frac{R_h^i}{R_h^i + R_{ca}^i}$). In the posterior
146 samples, the average proportion of unconfirmed cases in all asymptomatic infections was
147 74.10% (95%CI: 65.85% - 80.72%). The maximum proportion of unconfirmed cases was
148 observed in 20-30 years old at 86.59% (95%CI: 73.64% - 92.19%).

149

150 Symptomatic and asymptomatic transmission

151 To explore the impact of symptomatic and asymptomatic transmission, we present several
152 features of the estimated dynamic of the epidemic and the transmission burden caused by
153 symptomatic and asymptomatic cases in Figure 4. The estimated number of daily new

154 transmissions reached a peak around ten days prior to the peak of the daily reported new
155 confirmed cases (Figure 4A). We estimated a substantial number of undetected asymptomatic
156 cases (109 (95%CI: 73 - 164)) were infected before the first asymptomatic case was diagnosed
157 (January 27th) (Figure 4B). New transmissions were nearly eliminated by February 2nd, 2020
158 (Figure 4A), when a comprehensive set of restrictions had been implemented. The peak of the
159 two types of transmission both occurred between January 18th to 22nd (Figure 4C). The average
160 burden of asymptomatic transmission during the major outbreak period was estimated to be
161 12.86% (95%CI: 7.54% - 19.27%). The burden of asymptomatic transmission increased with
162 time, ranging from 7.77% to 16.03% (Figure 4D). Simulation studies were conducted to
163 investigate the dynamic changes in the transmission burden over time during a prolonged
164 epidemic. When the duration of the decreasing process of the contact function (represented by
165 “*m*”) was prolonged by two weeks and each individual’s daily contact number was increased by
166 one person during the outbreak period, we found a slower decreasing trend in daily new cases
167 infected by asymptomatic cases compared with that contributed by symptomatic cases.
168 Additional scenarios were generated demonstrating the possibility of asymptomatic transmission
169 dominating the total transmission under different conditions, especially when the duration
170 between symptom onset and disease confirmation for symptomatic infections was shortened and
171 the asymptomatic infections were not controlled.

172

173 *Age-depended transmission*

174 Within each age group, we observed heterogeneous transmission contributions during different
175 time periods (Figure 5A). Early on in the epidemic, the transmission burden was dominated by
176 persons of 50-60 years old (32.75% from January 8th to January 12th), but the proportion of
177 transmission contribution from people over 60 years old significantly increased over time,
178 surpassing the 50-60 years old and reaching 30.42% by February 1st, 2020. The proportion of
179 transmission contribution among varying age groups was distinct between symptomatic and
180 asymptomatic cases (Figure 5B). The majority of both symptomatic and asymptomatic
181 transmissions were contributed by persons over 30 years old (Table S9). Individuals below 30
182 years old only contributed less than 5% of all symptomatic transmission and approximately 12%
183 of all asymptomatic transmission, respectively, despite representing almost 40% of the entire
184 population. Contributions to asymptomatic transmission among 20-30 and >60 year age groups

185 (9.44%, and 31.73%, respectively) were substantially higher than their corresponding
186 contributions to symptomatic transmission (3.77%, and 26.55%, respectively). To further
187 understand possible age-dependent vaccination strategies, a simulation of seven scenarios was
188 conducted to assess the percentage decline in different age groups if one age group were to
189 achieve 100% immunity by vaccinations. The results suggested that vaccinations targeting age
190 groups above 30 years are likely to be more effective at the population level, with the most
191 percentage decline of cases from the entire population achieved by targeting the 50-60 years old
192 group. Meanwhile, vaccinating those younger than 30 years old are more likely to benefit their
193 own age groups.

194 **Discussion**

195

196 In our study, we found that asymptomatic cases were over 60% less infectious compared to
197 symptomatic cases. While great efforts like mass screening and strict contact tracing were
198 conducted, our results suggested that a large proportion of asymptomatic infections were still not
199 detected.[40] The burden of asymptomatic transmission was inferior in the early outbreak but
200 could become higher with the continuous spread of COVID-19. Under strained resources,
201 age-specific prevention and control strategies aimed at the middle age population may return
202 greater population-level benefits.

203

204 Current evidence suggests that asymptomatic COVID-19 cases are generally less infectious[14]
205 than cases with symptoms. We found that this difference may partially be explained by patient
206 age. Age may directly impact COVID-19 transmission through virus shedding patterns[15] as
207 discussed in previous studies.[41] Symptoms are commonly mild in children[42] but severe in
208 the elderly.[43] While still debatable,[44] higher severity has been associated with increased
209 shedding of the virus.[45] In our study, symptomatic and asymptomatic cases were most
210 infectious in individuals 60 years old or older. In contrary to the monotonic increasing
211 association between age and transmission in symptomatic cases, there was a plateau of a low
212 degree of transmission in young asymptomatic infections. We suspect older adults are not only
213 the most vulnerable to succumb to COVID-19 but also may be more likely to transmit once
214 infected, regardless of symptom status. Interventions attempting to suppress asymptomatic
215 transmission, such as mask-wearing, should primarily focus on older adults if interventions to the
216 whole community are not feasible.

217

218 Similar to previous studies, our results suggest a small proportion of asymptomatic cases have
219 been detected since the start of the COVID-19 pandemic in our setting.[46–48] Symptom-based
220 screening has limited capability in asymptomatic case detection,[6] while mass pathogen or
221 immunological-based testing at the population-level consumes tremendous health resources, and
222 thus is not feasible in most settings. Considering these challenges, age-dependent screening
223 strategies may be more practical. We found that the highest number of undetected asymptomatic
224 cases was among young adults aged 20 to 30 years old (Table S7) and the corresponding

225 transmission contribution was significantly higher than that of symptomatic case (Figure 5B).
226 Young people were less likely to adhere to social distancing guidelines,[49] often had mild
227 symptoms or were asymptomatic after infection,[50] and were not prioritized in prevention and
228 controlling strategies.[51] Meanwhile, younger asymptomatic patients were also more likely to
229 have normal CAT scan findings, which may further complicate case detection.[12] Case
230 detection of asymptomatic COVID-19 cases based on current control strategies implemented in
231 this study is alarming.

232

233 Based on the estimated transmission contributions from symptomatic and asymptomatic
234 infections, roughly 13% of infections were associated with asymptomatic transmission and that
235 percentage continuously increased with a prolonged period. The overall burden of transmission
236 was mainly contributed by symptomatic cases at the beginning of the epidemic, but
237 asymptomatic infections appeared to have increasing percentages of subsequent cases later on.
238 Additional simulations suggested that the transmission burden could even be dominated by
239 asymptomatic transmissions under certain circumstances. Therefore, the spreading potential of
240 asymptomatic cases cannot be ignored, especially in the later stages of the epidemic and in
241 regions where social distancing has not been mandated. Meanwhile, potential differences in
242 transmission burden by age groups, as shown in Figure 5 and S6, supports prioritizing
243 age-dependent prevention and control strategies when facing strained resources. As the larger
244 contributor to the transmission of COVID-19, the older age population is not only a highly
245 vulnerable group but should also be the primary target for prevention strategies. Vaccine
246 Strategies prioritizing the population between 30-60 years old are likely to have the most
247 population-level benefits.

248

249 There are several limitations in this study. First, data collection likely missed potential cases of
250 the epidemic, despite intensified efforts devoted by the local investigation team to trace contacts.

251 Due to this, we introduced a compartment in our model (R_h^i) to adjust for poor case
252 ascertainment and missing cases. Second, transmissibility and susceptibility were two factors
253 related to symptomatic and asymptomatic transmission estimation and can be difficult to capture
254 simultaneously. We used the susceptibility estimates from a previous study[22] as priors in our
255 model to account for this parameter identification problem. Third, the contact survey data we

256 used in our model were obtained in Shanghai, a city adjacent to Zhejiang province. Although the
257 two regions share a similar culture and modes of social activities, there were potential
258 uncertainties associated with the discrepancies in contact matrices. To address this limitation, we
259 introduced a correction parameter in our model, so these uncertainties were partially adjusted for
260 in the analyses.

261

262 **Conclusion**

263

264 In summary, our results suggest individual-level transmissibility of COVID-19 increases with
265 patient age, therefore targeting older age groups with prevention and intervention strategies is
266 expected to be more efficient. While asymptomatic cases are difficult to trace, the burden of
267 asymptomatic transmission is still sizable and should not be ignored. The results from our study
268 can be used to inform policy decisions on pandemic control and safe reopening.

269 **References**

- 270 1. Guan W-J, Ni Z-Y, Hu Y, Liang W-H, Ou C-Q, He J-X, et al. Clinical Characteristics of
271 Coronavirus Disease 2019 in China. *N Engl J Med*. Massachusetts Medical Society;
272 2020;382:1708–20.
- 273 2. World Health Organization. WHO Coronavirus Disease (COVID-19) Dashboard (12/12/2020)
274 [Internet]. [cited 2020 Dec 12]. Available from: <https://covid19.who.int>
- 275 3. Ferguson N, Laydon D, Nedjati Gilani G, Imai N, Ainslie K, Baguelin M, et al. Report 9:
276 Impact of non-pharmaceutical interventions (NPIs) to reduce COVID19 mortality and healthcare
277 demand [Internet]. Imperial College London; 2020 Mar. Available from:
278 <http://spiral.imperial.ac.uk/handle/10044/1/77482>
- 279 4. Prem K, Liu Y, Russell TW, Kucharski AJ, Eggo RM, Davies N, et al. The effect of control
280 strategies to reduce social mixing on outcomes of the COVID-19 epidemic in Wuhan, China: a
281 modelling study. *The Lancet Public Health*. Elsevier; 2020;5:e261–70.
- 282 5. Lewnard JA, Lo NC. Scientific and ethical basis for social-distancing interventions against
283 COVID-19. *The Lancet Infectious Diseases*. 2020;20:631–3.
- 284 6. Gandhi M, Yokoe DS, Havlir DV. Asymptomatic Transmission, the Achilles' Heel of Current
285 Strategies to Control Covid-19. *N Engl J Med*. 2020;382:2158–60.
- 286 7. Huff HV, Singh A. Asymptomatic Transmission During the Coronavirus Disease 2019
287 Pandemic and Implications for Public Health Strategies. *Clinical Infectious Diseases*.
288 2020;71:2752–6.
- 289 8. Rothe C, Schunk M, Sothmann P, Bretzel G, Froeschl G, Wallrauch C, et al. Transmission of
290 2019-nCoV Infection from an Asymptomatic Contact in Germany. *N Engl J Med*. Massachusetts
291 Medical Society; 2020;382:970–1.
- 292 9. Holshue ML, DeBolt C, Lindquist S, Lofy KH, Wiesman J, Bruce H, et al. First Case of 2019
293 Novel Coronavirus in the United States. *N Engl J Med*. 2020;382:929–36.
- 294 10. Hoehl S, Rabenau H, Berger A, Kortenbusch M, Cinatl J, Bojkova D, et al. Evidence of
295 SARS-CoV-2 Infection in Returning Travelers from Wuhan, China. *N Engl J Med*.
296 2020;382:1278–80.
- 297 11. Wölfel R, Corman VM, Guggemos W, Seilmaier M, Zange S, Müller MA, et al. Virological
298 assessment of hospitalized patients with COVID-2019. *Nature*. 2020;581:465–9.
- 299 12. Kronbichler A, Kresse D, Yoon S, Lee KH, Effenberger M, Shin JI. Asymptomatic patients
300 as a source of COVID-19 infections: A systematic review and meta-analysis. *International*
301 *Journal of Infectious Diseases*. 2020;98:180–6.
- 302 13. Han MS, Seong M-W, Kim N, Shin S, Cho SI, Park H, et al. Viral RNA Load in Mildly
303 Symptomatic and Asymptomatic Children with COVID-19, Seoul, South Korea. *Emerging*
304 *Infectious Diseases*. 2020;26:2497–9.

- 305 14. Gao M, Yang L, Chen X, Deng Y, Yang S, Xu H, et al. A study on infectivity of
306 asymptomatic SARS-CoV-2 carriers. *Respir Med.* 2020;169:106026.
- 307 15. Kim SE, Jeong HS, Yu Y, Shin SU, Kim S, Oh TH, et al. Viral kinetics of SARS-CoV-2 in
308 asymptomatic carriers and presymptomatic patients. *Int J Infect Dis.* 2020;95:441–3.
- 309 16. Moghadas SM, Fitzpatrick MC, Sah P, Pandey A, Shoukat A, Singer BH, et al. The
310 implications of silent transmission for the control of COVID-19 outbreaks. *PNAS. National*
311 *Academy of Sciences;* 2020;117:17513–5.
- 312 17. Li R, Pei S, Chen B, Song Y, Zhang T, Yang W, et al. Substantial undocumented infection
313 facilitates the rapid dissemination of novel coronavirus (SARS-CoV-2). *Science.*
314 2020;368:489–93.
- 315 18. Ferretti L, Wymant C, Kendall M, Zhao L, Nurtay A, Abeler-Dörner L, et al. Quantifying
316 SARS-CoV-2 transmission suggests epidemic control with digital contact tracing. *Science*
317 [Internet]. American Association for the Advancement of Science; 2020 [cited 2020 Dec
318 21];368. Available from: <https://science.sciencemag.org/content/368/6491/eabb6936>
- 319 19. Hu Z, Song C, Xu C, Jin G, Chen Y, Xu X, et al. Clinical characteristics of 24 asymptomatic
320 infections with COVID-19 screened among close contacts in Nanjing, China. *Sci China Life Sci.*
321 *Nature Publishing Group;* 2020;63:706–11.
- 322 20. Huang L, Zhang X, Zhang X, Wei Z, Zhang L, Xu J, et al. Rapid asymptomatic transmission
323 of COVID-19 during the incubation period demonstrating strong infectivity in a cluster of
324 youngsters aged 16-23 years outside Wuhan and characteristics of young patients with
325 COVID-19: A prospective contact-tracing study. *J Infect.* 2020;80:e1–13.
- 326 21. Meng H, Xiong R, He R, Lin W, Hao B, Zhang L, et al. CT imaging and clinical course of
327 asymptomatic cases with COVID-19 pneumonia at admission in Wuhan, China. *J Infect.*
328 2020;81:e33–9.
- 329 22. Davies NG, Klepac P, Liu Y, Prem K, Jit M, CMMID COVID-19 working group, et al.
330 Age-dependent effects in the transmission and control of COVID-19 epidemics. *Nat Med. Nature*
331 *Publishing Group;* 2020;26:1205–11.
- 332 23. Zhou R, Li F, Chen F, Liu H, Zheng J, Lei C, et al. Viral dynamics in asymptomatic patients
333 with COVID-19. *International Journal of Infectious Diseases.* 2020;96:288–90.
- 334 24. Berlin DA, Gulick RM, Martinez FJ. Severe Covid-19. *N Engl J Med. Massachusetts*
335 *Medical Society;* 2020;
- 336 25. Verity R, Okell LC, Dorigatti I, Winskill P, Whittaker C, Imai N, et al. Estimates of the
337 severity of coronavirus disease 2019: a model-based analysis. *Lancet Infect Dis.*
338 2020;20:669–77.

- 339 26. CDC COVID-19 Response Team. Severe Outcomes Among Patients with Coronavirus
340 Disease 2019 (COVID-19) - United States, February 12-March 16, 2020. *MMWR Morb Mortal*
341 *Wkly Rep.* 2020;69:343–6.
- 342 27. Kong D, Zheng Y, Wu H, Pan H, Wagner AL, Zheng Y, et al. Pre-symptomatic transmission
343 of novel coronavirus in community settings. *Influenza Other Respir Viruses.* 2020;14:610–4.
- 344 28. Furukawa NW, Brooks JT, Sobel J. Evidence Supporting Transmission of Severe Acute
345 Respiratory Syndrome Coronavirus 2 While Presymptomatic or Asymptomatic. *Emerg Infect*
346 *Dis [Internet].* 2020 [cited 2020 Aug 8];26. Available from:
347 <https://www.ncbi.nlm.nih.gov/pmc/articles/PMC7323549/>
- 348 29. Mizumoto K, Kagaya K, Zarebski A, Chowell G. Estimating the asymptomatic proportion of
349 coronavirus disease 2019 (COVID-19) cases on board the Diamond Princess cruise ship,
350 Yokohama, Japan, 2020. *Eurosurveillance [Internet].* 2020 [cited 2020 Apr 5];25. Available
351 from: <https://www.eurosurveillance.org/content/10.2807/1560-7917.ES.2020.25.10.2000180>
- 352 30. Bai Y, Yao L, Wei T, Tian F, Jin D-Y, Chen L, et al. Presumed Asymptomatic Carrier
353 Transmission of COVID-19. *JAMA. American Medical Association;* 2020;323:1406–7.
- 354 31. Bureau of Statistics. Zhejiang Provincial Bureau of Statistics: Sixth Census Data [Internet].
355 2014 [cited 2020 Jul 30]. Available from:
356 http://tjj.zj.gov.cn/art/2014/9/3/art_1530851_20980968.html
- 357 32. Chong KC, Cheng W, Zhao S, Ling F, Mohammad KN, Wang MH, et al. Monitoring disease
358 transmissibility of 2019 novel coronavirus disease in Zhejiang, China. *International Journal of*
359 *Infectious Diseases.* 2020;96:128–30.
- 360 33. Long Q-X, Tang X-J, Shi Q-L, Li Q, Deng H-J, Yuan J, et al. Clinical and immunological
361 assessment of asymptomatic SARS-CoV-2 infections. *Nat Med. Nature Publishing Group;*
362 2020;26:1200–4.
- 363 34. Lee S, Kim T, Lee E, Lee C, Kim H, Rhee H, et al. Clinical Course and Molecular Viral
364 Shedding Among Asymptomatic and Symptomatic Patients With SARS-CoV-2 Infection in a
365 Community Treatment Center in the Republic of Korea. *JAMA Internal Medicine.*
366 2020;180:1447–52.
- 367 35. Zhang J, Litvinova M, Liang Y, Wang Y, Wang W, Zhao S, et al. Changes in contact
368 patterns shape the dynamics of the COVID-19 outbreak in China. *Science.* 2020;368:1481–6.
- 369 36. Zhang J, Klepac P, Read JM, Rosello A, Wang X, Lai S, et al. Patterns of human social
370 contact and contact with animals in Shanghai, China. *Scientific Reports. Nature Publishing*
371 *Group;* 2019;9:15141.
- 372 37. Soetaert K, Petzoldt T, Setzer RW. Solving Differential Equations in R: Package deSolve.
373 *Journal of Statistical Software.* 2010;33:1–25.
- 374 38. Wolodzko T, Wolodzko MT. Package ‘extraDistr.’ 2017;

- 375 39. Perperoglou A, Sauerbrei W, Abrahamowicz M, Schmid M. A review of spline function
376 procedures in R. *BMC Medical Research Methodology*. 2019;19:46.
- 377 40. Flaxman S, Mishra S, Gandy A, Unwin HJT, Mellan TA, Coupland H, et al. Estimating the
378 effects of non-pharmaceutical interventions on COVID-19 in Europe. *Nature*. Nature Publishing
379 Group; 2020;584:257–61.
- 380 41. Esposito S, Principi N. To mask or not to mask children to overcome COVID-19. *Eur J*
381 *Pediatr*. 2020;179:1267–70.
- 382 42. Dong Y, Mo X, Hu Y, Qi X, Jiang F, Jiang Z, et al. Epidemiology of COVID-19 Among
383 Children in China. *Pediatrics*. American Academy of Pediatrics; 2020;145:e20200702.
- 384 43. Zhou F, Yu T, Du R, Fan G, Liu Y, Liu Z, et al. Clinical course and risk factors for mortality
385 of adult inpatients with COVID-19 in Wuhan, China: a retrospective cohort study. *The Lancet*.
386 2020;395:1054–62.
- 387 44. He X, Lau EHY, Wu P, Deng X, Wang J, Hao X, et al. Temporal dynamics in viral shedding
388 and transmissibility of COVID-19. *Nature Medicine*. Nature Publishing Group; 2020;26:672–5.
- 389 45. Liu Y, Yan L-M, Wan L, Xiang T-X, Le A, Liu J-M, et al. Viral dynamics in mild and severe
390 cases of COVID-19. *The Lancet Infectious Diseases*. 2020;20:656–7.
- 391 46. Fauci AS, Lane HC, Redfield RR. Covid-19 — Navigating the Uncharted. *New England*
392 *Journal of Medicine*. 2020;382:1268–9.
- 393 47. García LF. Immune Response, Inflammation, and the Clinical Spectrum of COVID-19. *Front*
394 *Immunol*. 2020;11:1441.
- 395 48. Oran DP, Topol EJ. Prevalence of Asymptomatic SARS-CoV-2 Infection□: A Narrative
396 Review. *Ann Intern Med*. 2020;173:362–7.
- 397 49. Czeisler MÉ, Tynan MA, Howard ME, Honeycutt S, Fulmer EB, Kidder DP, et al. Public
398 attitudes, behaviors, and beliefs related to COVID-19, stay-at-home orders, nonessential business
399 closures, and public health guidance—United States, New York City, and Los Angeles, May
400 5–12, 2020. *Morbidity and Mortality Weekly Report*. Centers for Disease Control and
401 Prevention; 2020;69:751.
- 402 50. Felsenstein S, Hedrich CM. COVID-19 in children and young people. *The Lancet*
403 *Rheumatology*. Elsevier; 2020;2:e514–6.
- 404 51. Bedford J, Enria D, Giesecke J, Heymann DL, Ihekweazu C, Kobinger G, et al. COVID-19:
405 Towards controlling of a pandemic. *The Lancet*. 2020;395:1015–8.
- 406

407 **Figures**

408

409 *Figure 1. Compartmental model for SARS-CoV-2 transmission, where “j” represents another*
410 *age group different from “i” for the compartments.*

411

412 *Figure 2. (A) The estimated transmissibility and 95% credible intervals for each age group; (B)*
413 *The ratios of asymptomatic transmissibility to symptomatic transmissibility for seven age groups.*

414

415 *Figure 3. The proportion of asymptomatic infections and unconfirmed asymptomatic infections*
416 *until February 22nd, 2020 for seven age groups.*

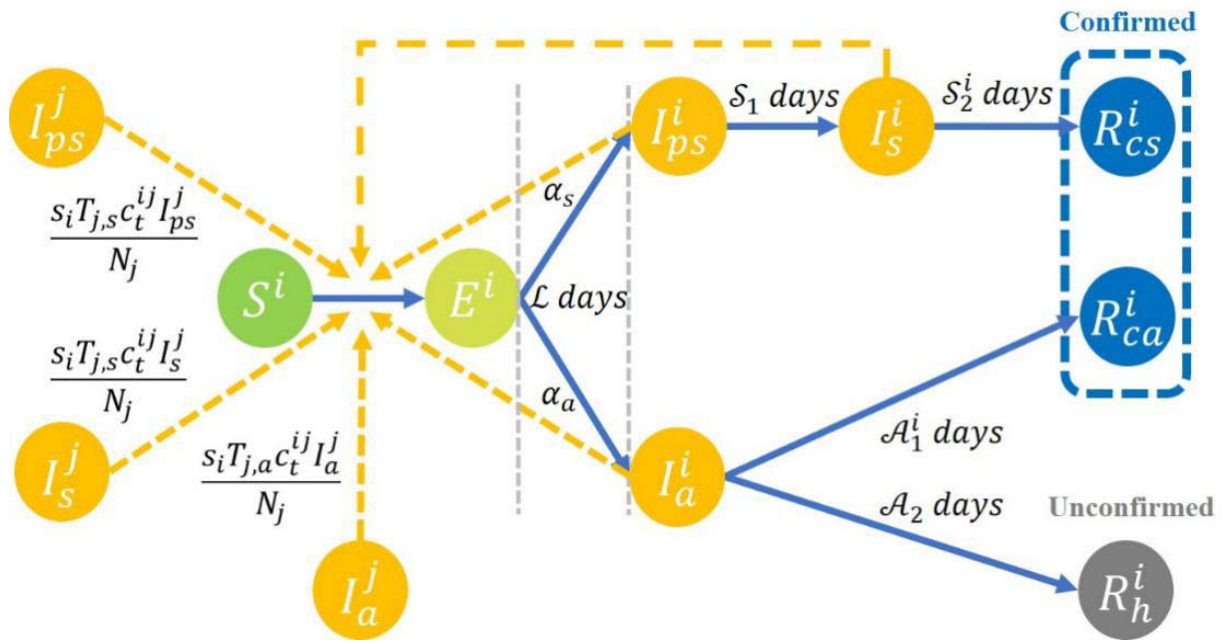
417

418 *Figure 4. The estimated dynamics of the epidemic and the transmission burdens from*
419 *symptomatic and asymptomatic cases. (A): The estimated numbers of daily new transmissions*
420 *with 95% credible intervals and the observed numbers of daily reported new confirmed cases*
421 *from January 8th to February 22nd, 2020; (B) The observed numbers of daily reported new*
422 *confirmed symptomatic (R_{cs}) and asymptomatic cases (R_{ca}) and the estimated numbers of daily*
423 *new cases that failed to be detected (R_h) with 95% credible intervals; (C): The estimated*
424 *numbers of infected individuals caused by symptomatic and asymptomatic transmission over*
425 *time, with 95% credible intervals; (D): Corresponding proportions of symptomatic and*
426 *asymptomatic transmissions over different time periods.*

427

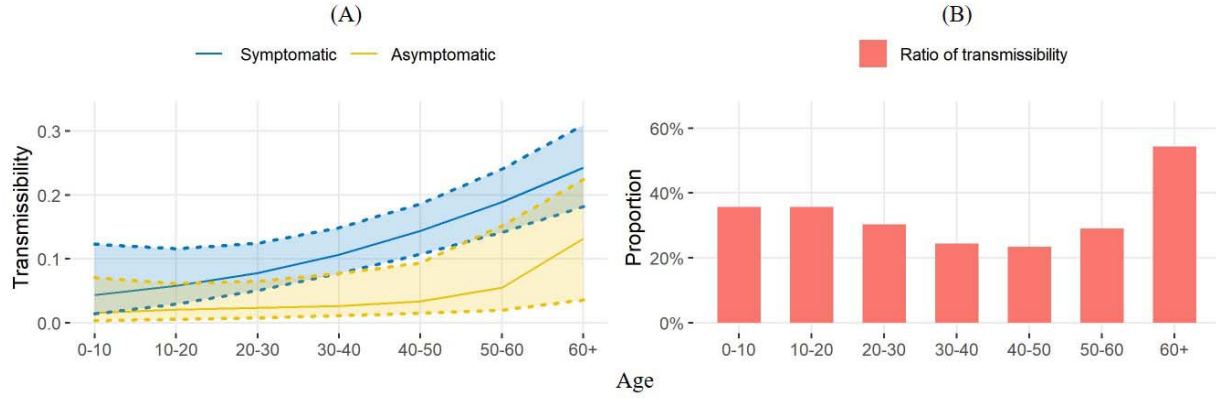
428 *Figure 5. The burden of transmission caused by different ages. (A) The estimated (contribution)*
429 *ratios of new transmissions from different ages over different time periods; (B) The estimated*
430 *(contribution) ratios of symptomatic and asymptomatic transmission from different ages. The*
431 *contribution ratio of each age group is calculated by the proportion of the transmissions caused*
432 *by the corresponding age group to the number of all transmissions in each transmission type,*
433 *from January 8th to February 1st, 2020.*

434 Figure 1. Compartmental model for SARS-CoV-2 transmission, where “j” represents another
 435 age group different from “i” for the compartments.



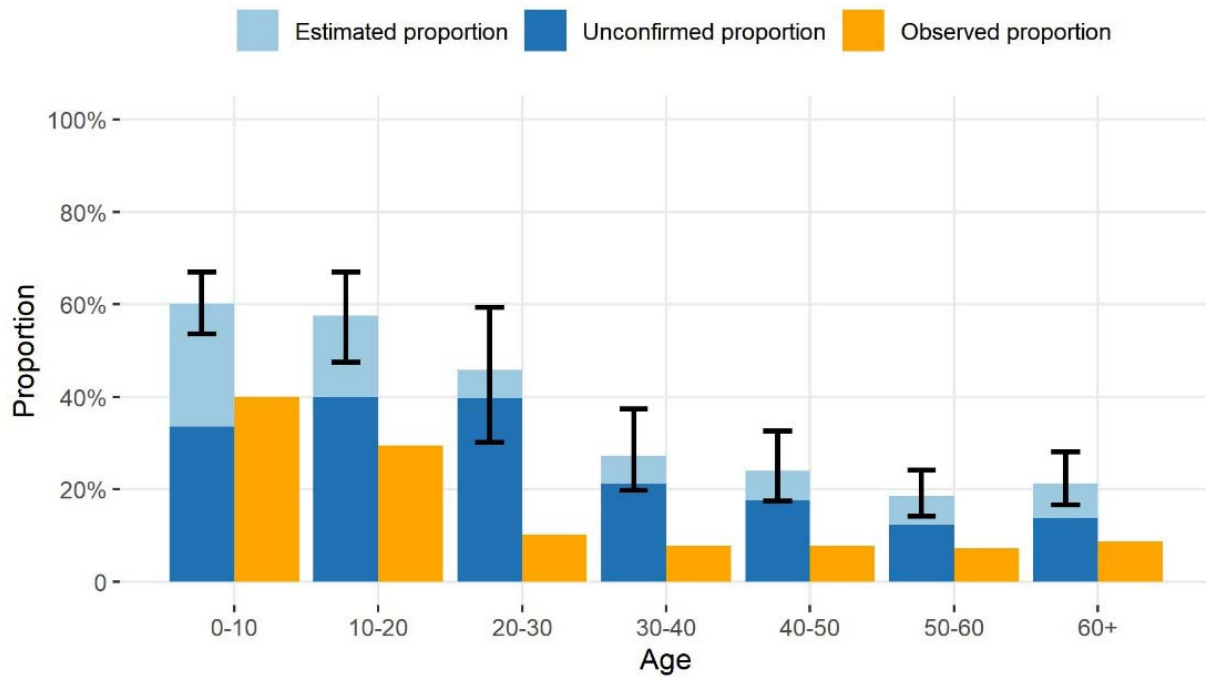
436

437 Figure 2. (A) The estimated transmissibility and 95% credible intervals for each age group; (B)
438 The ratios of asymptomatic transmissibility to symptomatic transmissibility for seven age
439 groups.



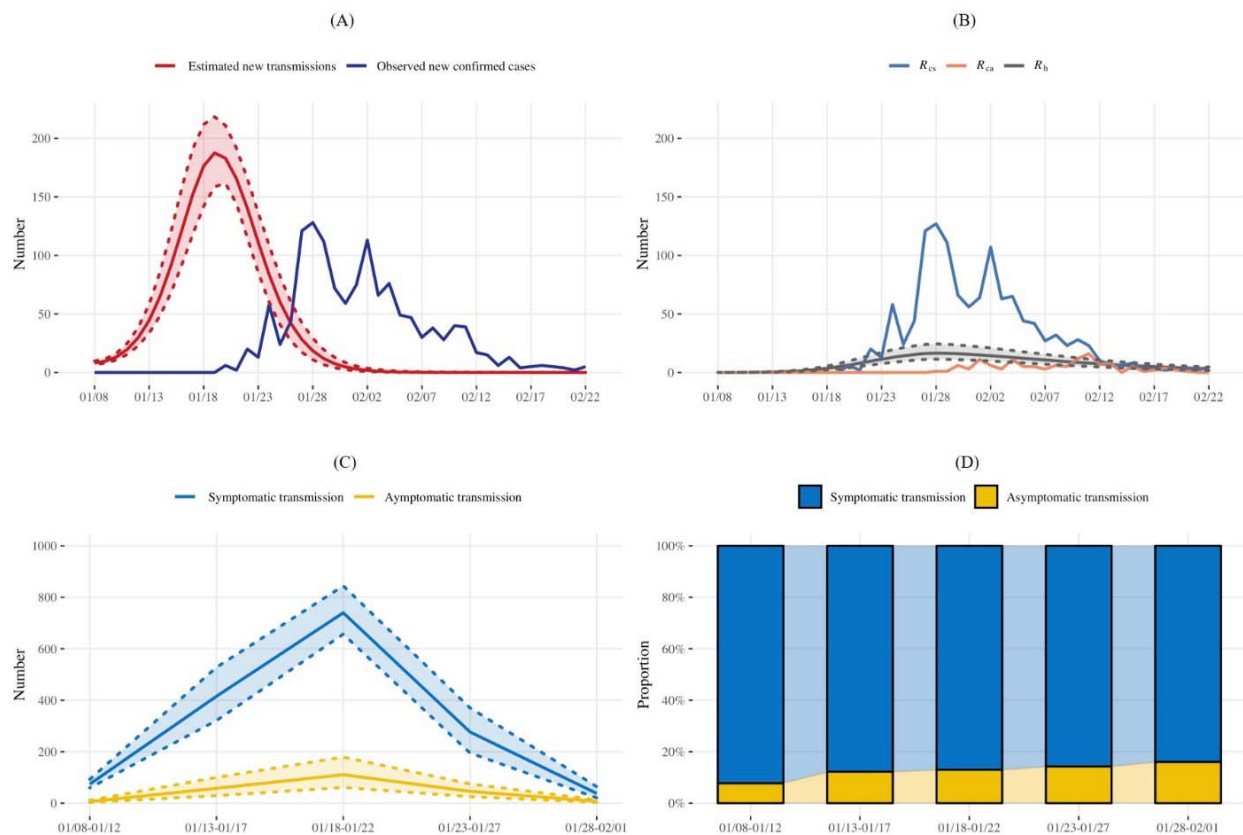
440

441 Figure 3. The proportion of asymptomatic infections and unconfirmed asymptomatic
442 infections until February 22nd, 2020, for seven age groups. The estimated proportions of
443 asymptomatic cases, the proportions of cases that failed to be detected among asymptomatic
444 infections (unconfirmed proportions), and the observed proportions of asymptomatic cases are
445 defined as: $\frac{R_h^i + R_{Ca}^i}{R_h^i + R_{Cs}^i + R_{Ca}^i}$, $\frac{R_h^i}{R_h^i + R_{Ca}^i}$, and $\frac{R_{Ca}^i}{R_{Cs}^i + R_{Ca}^i}$, respectively. The 95% credible intervals for the
446 estimated proportions of asymptomatic cases are shown for each age group.



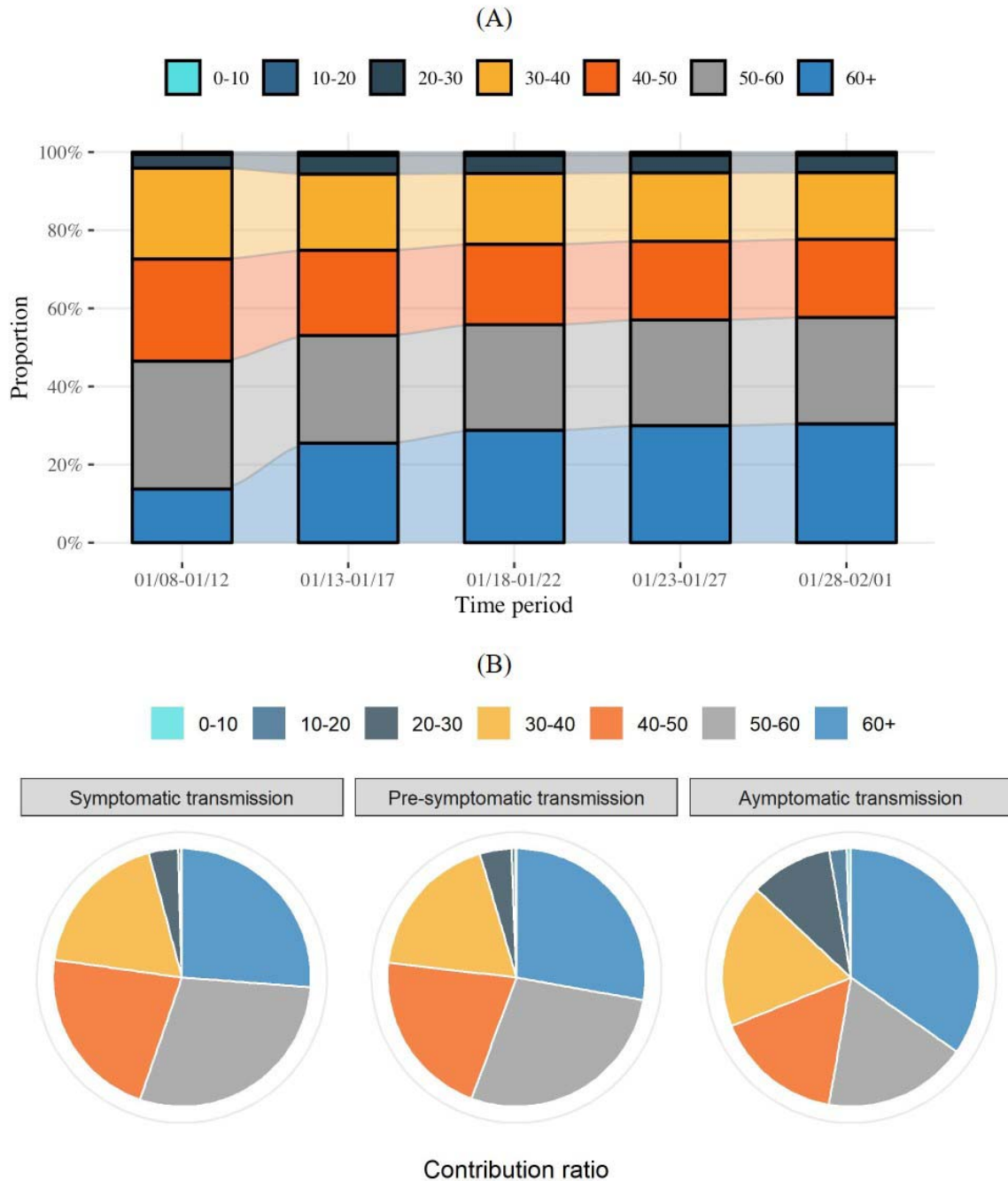
447

448 Figure 4. The estimated dynamics of the epidemic and the transmission burdens from
449 symptomatic and asymptomatic cases. (A): The estimated numbers of daily new transmissions
450 with 95% credible intervals and the observed numbers of daily reported new confirmed cases
451 from January 8th to February 22nd, 2020; (B) The observed numbers of daily reported new
452 confirmed symptomatic (R_{CS}) and asymptomatic cases (R_{Ca}) and the estimated numbers of daily
453 new cases that failed to be detected (R_h) with 95% credible intervals; (C): The estimated
454 numbers of infected individuals caused by symptomatic and asymptomatic transmission over
455 time, with 95% credible intervals; (D): Corresponding proportions of symptomatic and
456 asymptomatic transmissions over different time periods.



457

458 Figure 5. The burden of transmission caused by different ages. (A) The estimated (contribution)
459 ratios of new transmissions from different ages over different time periods; (B) The estimated
460 (contribution) ratios of symptomatic and asymptomatic transmission from different ages. The
461 contribution ratio of each age group is calculated by the proportion of the transmissions caused
462 by the corresponding age group to the number of all transmissions in each transmission type,
463 from January 8th to February 1st, 2020.



464