

1 **Original Research Article**

2 **Full title:**

3 *An evidence synthesis approach for combining different data sources illustrated using entomological*
4 *efficacy of insecticides for indoor residual spraying*

5 **Short title:**

6 *Evidence synthesis of insecticides for indoor residual spraying data*

7 Nathan Green*¹, Fiacre Agossa², Boulais Yovogan², Richard Oxborough³, Jovin Kitau⁴, Pie Müller^{5,6},

8 Edi Constant⁷, Mark Rowland⁸, Emile FS Tchacaya⁷, Koudou G Benjamin⁷, Thomas S Churcher⁹,

9 Michael Betancourt¹⁰, Ellie Sherrard-Smith⁹

10

11 ***Corresponding author:** Nathan Green n.green@ucl.ac.uk

12 **Addresses:**

13 1. Department of Statistical Science, University College London, Gower Street, London WC1E 6BT, UK

14 2. Centre de Recherche Entomologique de Cotonou, Quartier DONATIN / AKPAKPA, Benin

15 3. Abt Associates Inc., 6130 Executive Blvd, Rockville, MD 20852, USA

16 4. Department of Parasitology, Kilimanjaro Christian Medical University College, Moshi, Tanzania

17 5. Swiss Tropical and Public Health Institute, Socinstrasse 57, PO Box, 4002 Basel, Switzerland

18 6. University of Basel, Petersplatz 1, 4001 Basel, Switzerland

19 7. Centre Suisse de Recherches Scientifiquesen Côte d'Ivoire, Abidjan, Côte d'Ivoire

20 8. London School of Hygiene and Tropical Medicine (LSHTM), London, UK

21 9. MRC Centre for Global Infectious Disease Analysis, Department of Infectious Disease
22 Epidemiology, School of Public Health, Faculty of Medicine, Imperial College London, Norfolk Place,
23 London W2 1PG, UK

24 10. Symplectomorphic, LLC, New York, NY 10026, USA

25

26 **Keywords:** Bayesian inference, malaria, IRS

27

28 **Abstract**

29 *Background:* Prospective malaria public health interventions are initially tested for entomological
30 impact using standardised experimental hut trials. In some cases, data are collated as aggregated
31 counts of potential outcomes from mosquito feeding attempts given the presence of an insecticidal
32 intervention. Comprehensive data i.e. full breakdowns of probable outcomes of mosquito feeding
33 attempts, are more rarely available. Bayesian evidence synthesis is a framework that explicitly
34 combines data sources to enable the joint estimation of parameters and their uncertainties. The
35 aggregated and comprehensive data can be combined using an evidence synthesis approach to
36 enhance our inference about the potential impact of vector control products across different
37 settings over time.

38 *Methods:* Aggregated and comprehensive data from a meta-analysis of the impact of Actellic® 300CS
39 (Syngenta), an indoor residual spray (IRS) product, used on wall surfaces to kill mosquitoes and
40 reduce malaria transmission, were analysed using a series of statistical models to understand the
41 benefits and limitations of each.

42 *Results:* Many more data are available in aggregated format ($N = 23$ datasets, 5 studies) relative to
43 comprehensive format ($N = 3$ datasets, 2 studies). The evidence synthesis model was most robust at
44 predicting the probability of mosquitoes dying or surviving and blood-feeding. Generating odds
45 ratios from the correlated Bernoulli random sample indicates that when mortality and blood-feeding
46 are positively correlated, as exhibited in our data, the number of successfully fed mosquitoes will be
47 under-estimated. Analysis of either dataset alone is problematic because aggregated data require an
48 assumption of independence and there are few and variable data in the comprehensive format.

49 *Conclusions:* We developed an approach to combine sources from trials to maximise the inference
50 that can be made from such data. Bayesian evidence synthesis enables inference from multiple

51 datasets simultaneously to give a more informative result and highlight conflicts between sources.

52 Advantages and limitations of these models are discussed.

53

54 **Key messages:**

55 • Statistical models are developed to best infer key mosquito IRS statistics from disparate data
56 sources.

57 • Naïve methods, previously adopted, of combining different data sources can create bias and
58 must be explicitly considered.

59 • Mosquitoes are highly likely to feed in experimental hut trials using indoor residual spraying
60 of insecticides so the assumption of independence in the probability of mosquitoes dying is
61 reflective of trial data.

62 • We provide code for practitioners to implement this approach themselves in both BUGS and
63 Stan languages running from R.

64

65

66 Introduction

67 Interventions that shorten the mean lifespan of a mosquito and interrupt biting cycles are integral to
68 the control of malaria infections across Africa¹. The entomological effect of the indoor residual
69 spraying of insecticide (IRS) and insecticide-treated nets are tested using experimental hut trials as
70 part of the product validation process and before World Health Organization (WHO)
71 recommendations can be considered and made². These trials apply IRS to huts and then the
72 temporal impact of the IRS is tracked using a human study participants who stays overnight to act as
73 bait for blood-seeking mosquitoes. Over the course of the malaria transmission season, when
74 mosquitos are present, the outcomes of mosquito mortality and feeding attempts are observed and
75 compared to those incurred for a study participant who stays overnight in an unsprayed hut. On
76 entering an IRS treated hut, a mosquito may: i) blood-feed on human-baits; ii) be killed by the IRS
77 chemical compound, or; iii) exit into window or veranda traps.

78 These hut trial data are often published in aggregated format as the key metrics outlined by WHO
79 (induced mortality, blood-feeding inhibition and deterrence)² do not need data to be disaggregated.
80 The effects of interventions must be replicated in multiple settings that have different ecological
81 characteristics to better understand the overall protection that IRS – or other vector control – can
82 afford. Systematic reviews are increasingly used to assess ecological trends in these combined data
83 and summarise evidence to help evaluate interventions³⁻⁵.

84 Compiling aggregated data (AD) such as experimental hut studies can cause complications for meta-
85 analyses that use the data for slightly different purposes because, among other reasons: i) AD can be
86 presented in inconsistent ways by summarising results⁶ making data hard to harmonize across
87 different trials⁷; ii) AD may not fully account for individual-level characteristics leading to ecological
88 bias^{8,9}; iii) if large numbers of large trials are available, meta-regression analyses of AD may prove
89 statistically powerful but with few or smaller trials AD may miss clinically significant treatment level
90 effects¹⁰, and; iv) within study variability may be missed¹¹. However, there are often few data sets

91 available for any intervention tested and, historically, only a subset of these trials may provide
92 individual-level data (ILD), which could alleviate some of these issues.

93 In the experimental hut data testing IRS products, a specific challenge arises from aggregating data
94 because no distinction is made as to whether mosquitoes have blood-fed and survived or blood-fed
95 and been killed. This is an important epidemiological distinction because those mosquitoes that
96 blood-feed and survive may go on to oviposit or transmit malaria parasites onward. Our recent
97 assessment of IRS products made the simplifying assumption that mosquitoes were equally likely to
98 have blood-fed and survived or blood-fed and died on entering a sprayed hut³. In this paper, we use
99 systematically collated data from Sherrard-Smith *et al.*³ on the IRS product Actellic 300®CS
100 (Syngenta) as an example dataset to explore different models that aim to infer how the impact of
101 the vector control product on mosquitoes changes over time using both AD and ILD. Within these
102 data we have 5 studies presenting aggregated data (23 time series), of which 2 studies also present
103 comprehensive (ILD) data (3 time series). Careful consideration is required particularly for any
104 analysis where data are aggregated in different ways across trials, and where the comprehensive
105 data are only part of the total available data. Ideally, we want to ensure that any inference using AD
106 is in agreement with inference afforded by the comprehensive data. Bayesian statistical
107 methodologies provide a natural paradigm to analyse evidence from multiple sources in different
108 formats¹¹⁻¹⁶. Bayesian evidence synthesis is a framework that explicitly combines data sources
109 enabling joint estimation of parameters and their uncertainties¹⁷. We compare predictions of each
110 statistical model presented to those estimated by analysing the subset of either aggregated data or
111 comprehensive data individually. We demonstrate the advantage of inferring from both data
112 sources.

113 **Methods**

114 **Data**

115 Actellic® 300CS is an IRS product consisting of the organophosphate insecticide pirimiphos-methyl
116 that is widely used for IRS campaigns across the African continent since WHO recommendation in
117 2013¹⁸ . The product was evaluated using West African experimental huts in Benin, Côte d'Ivoire and
118 Tanzania across 5 studies^{19–22} [one unpublished]. Twenty-three datasets from these studies had
119 aggregated data reporting the total number of mosquitoes that entered sprayed huts, and the total
120 number killed, blood-fed or exited without the distinction for comprehensive assessment for at least
121 3 time points (Supplementary Data 1, dataset 1). Comprehensive data were available from three of
122 these datasets (data available upon request) (data resources are summarised in Table 1). At least 3
123 repeated measures through time were made for each study ranging from 6 to 12 months since the
124 insecticide was first deployed.

125 Our aim is to determine the probability that a mosquito is either killed or blood-fed and surviving
126 after attempting to feed in an experimental hut sprayed with insecticide. We determine how this
127 association changes over time and how probabilities differ between mosquito species.

128 A contingency table to demonstrate the different aggregation of these data from the available
129 sources is shown in Figure 1.

130

131 (Figure 1 here)

132

133 **Statistical methods**

134 We built three statistical models that were fitted in a Bayesian framework using the probabilistic
135 programming software OpenBUGS (release 3.2.3)²³, accessed through R (version 3.6.1)²⁴. Data are
136 provided in Supplementary data file 1, model code are provided in Supplementary Material 1. We

137 provide equivalent code for the same process to be conducted in RStan (version 2.21.1)²⁵ in
138 Supplementary Material 1.

139 The first model (demonstrated schematically in Figure 2a, Model 2a) uses the aggregated data only
140 and estimates the proportion of mosquitoes that are killed and those that are blood-fed before
141 inferring from the product of these probabilities, those that are surviving and blood-feeding, using
142 the assumption that a mosquito is equally likely to be blood-fed whether killed or not.

143 The second model adjusts the aggregated data directly prior to fitting the model and then fits a
144 logistic binomial to estimate the respective probabilities from the adjusted data. This is an approach
145 used previously³ on aggregated data (Figure 2b, Model 2a). This model structure is also fitted to the
146 comprehensive data where no prior assumptions are required (Figure 2c, Model 2b) to estimate the
147 probabilities from the comprehensive data set.

148 The third model (Figure 2d, Model 3), a Bayesian evidence synthesis model, is constructed similarly
149 but distinct from previous methods^{16,17,26}. This model combines the data sources probabilistically to
150 incorporate the inferences that can be made from the comprehensive data benefited by the
151 additional aggregated data source.

152 (Figure 2 here)

153

154 **Model 1**

155 The largest number of available trials provide AD. Model 1 (Figure 2a) (and Model 2, Figure 2b)
156 disregards the smaller subset of richer ILD. These trials do not record which mosquitoes had jointly
157 survived and blood-fed. Posterior distributions are estimated for the marginal probabilities of
158 mosquitoes that are blood-fed (P^f) or mosquitoes that have been killed (P^d) (Figure 1).

159 A time-dependent logistic function is fitted to IRS impact on mosquito mortality and mosquito
160 blood-feeding (t , in days).

161

$$X_{k,i}^d \sim \text{Binomial}(N_{k,i}, P_{k,i}^d)$$
$$P_{k,i}^d = \frac{1}{1 + \exp\left(-(\alpha_k^d + \beta_k^d \times t_{k,i})\right)}$$

162

$$\alpha_k^d \sim \text{Normal}(\mu_{\alpha^d}, \sigma_{\alpha^d}^2), \beta_k^d \sim \text{Normal}(\mu_{\beta^d}, \sigma_{\beta^d}^2)$$

163

164 Superscript denotes whether that mosquitoes will die (d). The subscripts denote the trial identifier k
165 and the time point at which measurements are taken i . We use equivalent formulae for the fed
166 model where blood-fed (f) replaces mosquitoes that die (d). Parameters α and β determine the
167 shape of the binomial relationship and have normally distributed priors with mean μ and variance σ^2 .
168 The raw data are indicated by X , the count of mosquitoes that were killed (or blood-fed), and N , the
169 total count of mosquitoes.

170 Given the absence of data on the mosquitoes that have survived and blood-fed, we can instead infer
171 this probability by assuming independence, combine the marginal probabilities to estimate the joint
172 probability that mosquitoes are both dead and blood-fed:

$$\widehat{P}_{11} = p^d \times p^f$$

173 Or those that survived and fed:

$$\widehat{P}_{01} = p^f \times (1 - p^d)$$

174 In other words, we assume that mosquitoes are equally likely to have been killed and blood-fed or to
175 have survived and blood-fed (Figure 3a and 3b).

176 **Model 2**

177 We contrast this with a previous approach³, where, before fitting the time series data, the number
178 of mosquitoes that were blood feeding (X_1) is adjusted by assuming that blood-feeding does not
179 increase the probability of being killed. The blood-feeding and surviving mosquitoes are assumed to
180 be:

$$\widehat{X}_{10} = X^f \times \left(1 - \frac{X^d}{N}\right)$$

181 A time-dependent logistic function is fitted to these adjusted data on IRS impact for mosquito
 182 survival and successful blood-feeding (t , in days) (Figure 3c and 3d):

$$X_{k,i}^{sf} \sim \text{Binomial}(N_{k,i}^{sf}, P_{k,i}^{sf})$$

$$P_{k,i}^{sf} = \frac{1}{1 + \exp\left(-(\alpha_k^{sf} + \beta_k^{sf} \times t_{k,i}^{sf})\right)}$$

183 $\alpha_k^{sf} \sim \text{Normal}(\mu_{\alpha^{sf}}, \sigma_{\alpha^{sf}}^2), \beta_k^{sf} \sim \text{Normal}(\mu_{\beta^{sf}}, \sigma_{\beta^{sf}}^2)$

184

185 This model is also fitted to the comprehensive data only to estimate the four different potential
 186 outcomes from a mosquito feeding attempt (Figure 2c, Figure 4a and 4b) shown in grey boxes in the
 187 contingency table (Figure 1).

188 **Model 3**

189 Model 3 presents the Bayesian evidence synthesis that allows inference of the parameter estimates
 190 for each potential mosquito outcome through combining both data sources.

191 AD are assumed to fit binomial distributions such that:

$$X_{k,i}^d \sim \text{binomial}(N_{k,i}, P_{k,i}^{df} + P_{k,i}^{df})$$

$$X_{k,i}^f \sim \text{binomial}(N_{k,i}, P_{k,i}^{df} + P_{k,i}^{df})$$

192 A logistic function is used to describe the time-dependent data:

$$P_{k,i}^1 = \frac{1}{1 + \sum_{l=2}^4 \exp\left(-(\alpha_k^l + \beta_k^l \times t_{k,i}^l)\right)}$$

$$P_{k,i}^j = \frac{\exp\left(-(\alpha_k^j + \beta_k^j \times t_{k,i}^j)\right)}{1 + \sum_{l=2}^4 \exp\left(-(\alpha_k^l + \beta_k^l \times t_{k,i}^l)\right)}, j = 2, 3, 4$$

193 $\alpha_k^j \sim \text{Normal}(\mu_{\alpha^j}, \sigma_{\alpha^j}^2), \beta_k^j \sim \text{Normal}(\mu_{\beta^j}, \sigma_{\beta^j}^2)$

194

195 The superscript j represents the possible outcomes noted in the contingency table (Figure 1).

196 The comprehensive data are modelled similarly but using a multinomial distribution for the 4

197 categories and the logistic link function.

$$\mathbf{X}_{k,i} \sim \text{Multinomial}(N_{k,i}, \mathbf{P}_{k,i})$$

198 where $\mathbf{X} = (X_{00}, X_{10}, X_{01}, X_{11})$ and $\mathbf{P} = (p^{df}, p^{\bar{d}f}, p^{d\bar{f}}, p^{\bar{d}\bar{f}})$.

199 The hyper-parameters to generate the posterior predictions for each distribution are linked across

200 the two datasets such that they are exchangeable, i.e. for k consisting of both ILD and AD trials

$$\alpha_k^j \sim \text{Normal}(\mu_{\alpha_j}, \sigma_{\alpha_j}^2), \beta_k^j \sim \text{Normal}(\mu_{\beta_j}, \sigma_{\beta_j}^2)$$

202 To understand better how the variability in data sources effects predictive ability of the evidence

203 synthesis model, we generated correlated Bernoulli random samples where the odds ratio for each

204 source was either matched, i.e. the predicted mosquitoes surviving and blood-feeding are reflected

205 in both data sources, or mis-matched, i.e. the aggregated source over- or under- estimates the

206 proportion of mosquitoes that survive and blood-feed (Figure 5).

207 **Results**

208 The model predictions of the probability that mosquitoes are killed or alive and blood-fed in

209 insecticide-treated experimental huts and how these effects change over time are presented in

210 Figure 3 and 4. The median probable outcomes are reassuringly similar however the uncertainties

211 for different models are very different.

212

213 (Figure 3 here)

214 (Figure 4 here)

215

216 Where only aggregated data are available, it is only possible to predict the alive and blood-fed

217 probability if some assumption is made about independence between feeding and dying. Assuming

218 independence using aggregated data predicts very similar median impacts to predictions made using

219 data with the full complement of potential outcomes from a mosquito feeding attempt. However,
220 behavioural vector biologists report that *Anopheles gambiae* sensu lato and *An. funestus* s.l. most
221 often rest indoors after blood-feeding²⁷⁻³³, which indicates that blood-fed mosquitoes are possibly
222 more likely to be exposed to insecticides sprayed onto indoor surfaces.

223 Only 3 datasets with a full breakdown of potential outcomes were available (Table 1). Two studies
224 were conducted in Benin and 1 study was completed in Côte d'Ivoire, although both tested *An*
225 *gambiae* s.l. mosquitoes in West African huts with both walls and ceilings sprayed. The key
226 difference was that the Côte d'Ivoire study provided holed nets for the study participants to sleep
227 under during the trial whereas the Benin studies provided no netting for sleepers. We could observe
228 that the data from Côte d'Ivoire killed mosquitoes for a shorter period than those from Benin (Figure
229 3). It is possible that these untreated bed nets provided an alternative surface for blood fed
230 mosquitoes to rest upon and digest feeds. Almost all mosquitoes blood-feed throughout the studies
231 (median estimate across studies and months since spraying; 91.5%, 95%CI; 68.4% - 100% mosquitoes
232 are blood-fed).

233 (Figure 5 here)

234

235 We can see in Figure 5 that the difference between the different predictions can be significant over
236 longer periods of time. The model using comprehensive data only is very uncertain. However, these
237 data provide worthwhile additional information when combined with the aggregate data such that
238 the proportion survived and fed at 12 months could be approximately 10% higher than the
239 aggregate data only model.

240 A major advantage of the Bayesian evidence synthesis over the alternative methods is seen by the
241 tightened uncertainty bounds predicted (see Figure 5). This is driven by the additional data available
242 for this statistical framework. To understand how this prediction is affected by correlated data
243 sources we explore the correlation coefficient that is bounded by some function of the marginal

244 probabilities which makes using a straightforward multivariate normal sampler fragile. Instead, we
245 use the odds ratio (OR) (which is unrestricted) to specify the association between the two binary
246 variables and then convert this OR, for given marginal probabilities of the events under
247 consideration, into a (valid) correlation ρ to be used in multivariate binomial sampling. We can see
248 from Figure 5a-c that when mortality and blood-feeding are positively correlated, the number of
249 successfully fed mosquitoes is under-estimated. This is our data situation. Alternatively, when
250 mortality and blood-feeding are negatively correlated the number of successfully fed is over-
251 estimated. Increasing data in the comprehensive resource (ILD) will always be beneficial to the
252 accuracy of the predictions.

253 (Figure 6 here)

254

255 Discussion

256 Concerns around mosquito resistance to pyrethroid insecticides has accelerated development of
257 alternative insecticide products to help mitigate against any diminishing impact from pyrethroid-
258 based vector control. By necessity, these products have different mechanisms of action so that
259 rigorous testing is required prior to determining their potential benefit. This generates a wealth of
260 data. Alongside this, statistical methods are developing and their availability to biological scientists is
261 increasing through software languages such as R, BUGS and Stan. We demonstrate with these data
262 how statistical models can be adapted and developed to maximise performance of inference from
263 different but related data sources. This is all the more important since there are ethical decisions to
264 be made when conducting such trials that result in differences. A key example is the debate about
265 providing an untreated (sometimes holed) net for the study participant present to lure mosquitoes
266 indoors during an IRS hut study. This is necessary since providing an intact net during an IRS study
267 will prevent most blood-feeding which will then affect mosquito behaviour as IRS is designed
268 primarily to target mosquitoes that are resting on walls after blood-feeding. In an IRS hut without a
269 net most mosquitoes will feed and then rest on walls to digest the blood meal and are then killed by

270 the IRS. A further complication is that, if a mosquito encounters a net, she may alight on the wall
271 unfed and be killed by the IRS in which case the proportion of mosquitoes that are unfed-dead will
272 be higher, as will be the proportion unfed-live mosquitoes, which may go on to feed elsewhere and
273 transmit malaria.

274 Bayesian evidence synthesis (Model 3) allows both the most available, aggregated data and most
275 accurate, comprehensive data to inform predictions of probable outcomes of mosquito feeding
276 attempts. We show that this approach can refine predictions and tighten uncertainty. In practical
277 terms, this may significantly increase or decrease the predicted proportions and so potentially
278 impact decision making. The volume of aggregated data relative to comprehensive data means that
279 the inference is shrunk towards that of Models 1 and 2 (Figures 3, 4c and 4d) which use aggregated
280 data alone. With a greater volume of comprehensive data, which would be the ideal, these
281 predictions might be altered. Simulating a correlated Bernoulli random variable allows us to
282 understand how these biases play out; essentially, where probabilities are positively correlated (in
283 our case, the probability that mosquitoes will be killed is correlated with the probability that
284 mosquitoes will also be fed), we would expect the evidence synthesis to under-estimate the
285 probability of mosquitoes blood-feeding and surviving. Conversely, were these probabilities
286 negatively correlated then those mosquitoes surviving having blood-fed would be overestimated. In
287 the context of IRS impact on mosquito behaviour, both scenarios are problematic. The first would
288 overestimate the impact of the intervention while the second would undersell its potential.
289 Acknowledging these effects of the statistical approach are therefore crucial.

290 We recognise that other, related modelling choices were available. For example, in terms of data, we
291 could have aggregated the comprehensive data and combined these with the originally aggregated
292 data to create a new aggregated data set. In terms of modelling, the aggregate data-only analysis
293 assumed independent Binomial models for death and successfully fed. We could have estimated the
294 two outcomes jointly as in the full Bayesian evidence synthesis model. However, the aim of this work

295 was to compare approaches performed previously^{16,17,26} against the full Bayesian evidence synthesis
296 approach, which we claim is the best option.

297 Alternative approaches to evidence synthesis are published which could be explored for their
298 suitability to the peculiarities of the example used here, such as partial reconstruction of
299 comprehensive data³⁴. Another alternative is to include an indicator to the linear predictor to note
300 those studies with additional data or potentially those where some assumption like independence is
301 made *a priori* and allow them to have more weight in the ultimate predictions³⁵. There are also
302 sources of uncertainty in the data that we do not explore here including differences in wall surface,
303 the provision of, and number of holes in, untreated mosquito nets for volunteer sleepers, the
304 geographic location of the hut trial and respective mosquito species represented. Other studies have
305 begun to consider the scale and implications of these differences^{36–38}.

306 Given the increased capacity to collate multiple data and the increased access to statistical software,
307 it is increasingly important to explore how different methods compare and infer biologically relevant
308 conclusions. Bayesian evidence synthesis provides a robust statistical approach when different
309 resources are available but may be biased toward the dataset with the greatest absolute quantity of
310 information.

311

312 **References**

- 313 1. Bhatt S, Weiss DJ, Cameron E, et al. The effect of malaria control on *Plasmodium falciparum*
314 in Africa between 2000 and 2015. *Nature* [Internet]. Nature Publishing Group, a division of
315 Macmillan Publishers Limited. All Rights Reserved.; 2015 Oct 8 [cited 2017 Jan
316 12];**526**(7572):207–11. Available from: <http://dx.doi.org/10.1038/nature15535>
- 317 2. World Health Organization. Guidelines for malaria vector control [Internet]. Geneva; 2019.
318 Available from: [https://apps.who.int/iris/bitstream/handle/10665/310862/9789241550499-](https://apps.who.int/iris/bitstream/handle/10665/310862/9789241550499-eng.pdf?ua=1)
319 [eng.pdf?ua=1](https://apps.who.int/iris/bitstream/handle/10665/310862/9789241550499-eng.pdf?ua=1)

- 320 3. Sherrard-Smith E, Griffin JT, Winskill P, et al. Systematic review of indoor residual spray
321 efficacy and effectiveness against *Plasmodium falciparum* in Africa. *Nat Commun* [Internet].
322 Nature Publishing Group; 2018 Dec 26 [cited 2018 Nov 27];**9**(1):4982. Available from:
323 <http://www.nature.com/articles/s41467-018-07357-w>
- 324 4. Pluess B, Tanser FC, Lengeler C, Sharp BL. Indoor residual spraying for preventing malaria.
325 *Cochrane Database Syst Rev*. Wiley; 2010 Apr 14;
- 326 5. Choi L, Pryce J, Garner P. Indoor residual spraying for preventing malaria in communities
327 using insecticide-treated nets. *Cochrane Database Syst Rev* [Internet]. 2019 May 23 [cited
328 2019 Dec 20]; Available from: <http://doi.wiley.com/10.1002/14651858.CD012688.pub2>
- 329 6. Riley RD, Steyerberg EW. Meta-analysis of a binary outcome using individual participant data
330 and aggregate data. *Res Synth Methods*. 2010 Jan;**1**(1):2–19.
- 331 7. Walraven C van. Individual patient meta-analysis—rewards and challenges. *J Clin Epidemiol*
332 [Internet]. Pergamon; 2010 Mar 1 [cited 2019 Jun 4];**63**(3):235–237. Available from:
333 <https://www.sciencedirect.com/science/article/pii/S0895435609001103?via%3DiHub>
- 334 8. Debray TPA, Moons KGM, Valkenhoef G van, et al. Get real in individual participant data (IPD)
335 meta-analysis: a review of the methodology. *Res Synth Methods* [Internet]. John Wiley &
336 Sons, Ltd; 2015 Dec 1 [cited 2019 Jun 4];**6**(4):293–309. Available from:
337 <http://doi.wiley.com/10.1002/jrsm.1160>
- 338 9. Berlin JA, Santanna J, Schmid CH, Szczech LA, Feldman HI. Individual patient- versus group-
339 level data meta-regressions for the investigation of treatment effect modifiers: ecological
340 bias rears its ugly head. *Stat Med* [Internet]. John Wiley & Sons, Ltd; 2002 Feb 15 [cited 2019
341 Jun 4];**21**(3):371–387. Available from: <http://doi.wiley.com/10.1002/sim.1023>
- 342 10. Lambert PC, Sutton AJ, Abrams KR, Jones DR. A comparison of summary patient-level
343 covariates in meta-regression with individual patient data meta-analysis. *J Clin Epidemiol*

- 344 [Internet]. Pergamon; 2002 Jan 1 [cited 2019 Jun 4];**55**(1):86–94. Available from:
345 <https://www.sciencedirect.com/science/article/pii/S0895435601004140>
- 346 11. Debray TPA, Damen JAAG, Snell KIE, et al. A guide to systematic review and meta-analysis of
347 prediction model performance. *BMJ*. 2017 Jan;i6460.
- 348 12. Mai Y, Zhang Z. Software Packages for Bayesian Multilevel Modeling. *Struct Equ Model A*
349 *Multidiscip J* [Internet]. Routledge; 2018 Jul 4 [cited 2019 Jun 4];**25**(4):650–658. Available
350 from: <https://www.tandfonline.com/doi/full/10.1080/10705511.2018.1431545>
- 351 13. Brimacombe M. Likelihood methods in biology and ecology: a modern approach to statistics
352 [Internet]. 1st Editio. Chapman and Hall CRC Press Taylor & Francis Group; 2019 [cited 2019
353 Jun 4]. Available from:
354 <https://books.google.co.uk/books?hl=en&lr=&id=9MuCDwAAQBAJ&oi=fnd&pg=PP1&dq=bayesian+statistical+modelling+for+ecologists+Stan+and+WinBugs&ots=F8-JuJnsQS&sig=mT94cV9QpmsgSyqrB5rVNP613wXw#v=onepage&q&f=false>
- 357 14. Riley RD, Moons KGM, Snell KIE, et al. A guide to systematic review and meta-analysis of
358 prognostic factor studies. *BMJ* [Internet]. British Medical Journal Publishing Group; 2019 Jan
359 30 [cited 2019 Jun 4];**364**:k4597. Available from:
360 <http://www.ncbi.nlm.nih.gov/pubmed/30700442>
- 361 15. Jackson C, Presanis A, Conti S, Angelis D De. Value of Information: Sensitivity Analysis and
362 Research Design in Bayesian Evidence Synthesis. *J Am Stat Assoc* [Internet]. Taylor & Francis;
363 2019;**114**(528):1436–1449. Available from: <https://doi.org/10.1080/01621459.2018.1562932>
- 364 16. Mcdonald SA, Presanis AM, Angelis D De, Hoek W Van Der, Hooiveld M. An evidence
365 synthesis approach to estimating the incidence of seasonal influenza in the Netherlands.
366 2013;33–41.
- 367 17. Jackson D. Confidence intervals for the between-study variance in random effects meta-

- 368 analysis using generalised Cochran heterogeneity statistics. *Res Synth Methods* [Internet].
369 John Wiley & Sons, Ltd; 2013 Jun 1 [cited 2019 Jun 19];4(3):220–229. Available from:
370 <http://doi.wiley.com/10.1002/jrsm.1081>
- 371 18. World Health Organization. Report of the Sixteenth WHOPEs Working Group Meeting
372 [Internet]. Geneva, Switzerland; 2013. Available from: <http://www.who.int/whopes/en>
- 373 19. Tchicaya ES, Nsanzabana C, Smith T a, et al. Micro-encapsulated pirimiphos-methyl shows
374 high insecticidal efficacy and long residual activity against pyrethroid-resistant malaria
375 vectors in central Côte d'Ivoire. *Malar J* [Internet]. 2014;13:332. Available from:
376 [http://www.pubmedcentral.nih.gov/articlerender.fcgi?artid=4159530&tool=pmcentrez&ren](http://www.pubmedcentral.nih.gov/articlerender.fcgi?artid=4159530&tool=pmcentrez&rendertype=abstract)
377 [dertype=abstract](http://www.pubmedcentral.nih.gov/articlerender.fcgi?artid=4159530&tool=pmcentrez&rendertype=abstract)
- 378 20. Rowland M, Boko P, Odjo A, Asidi A, Akogbeto M, N'Guessan R. A new long-lasting indoor
379 residual formulation of the organophosphate insecticide pirimiphos methyl for prolonged
380 control of pyrethroid-resistant mosquitoes: an experimental hut trial in Benin. *PLoS One*
381 [Internet]. 2013;8(7):e69516. Available from:
382 <http://journals.plos.org/plosone/article?id=10.1371/journal.pone.0069516>
- 383 21. Agossa FR, Aikpon R, Azondekon R, et al. Efficacy of various insecticides recommended for
384 indoor residual spraying: pirimiphos methyl, potential alternative to bendiocarb for
385 pyrethroid resistance management in Benin, West Africa. *Trans R Soc Trop Med Hyg*
386 [Internet]. Oxford University Press; 2014 Feb 1 [cited 2018 Jul 24];108(2):84–91. Available
387 from: <https://academic.oup.com/trstmh/article-lookup/doi/10.1093/trstmh/trt117>
- 388 22. Oxborough RM, Kitau J, Jones R, et al. Long-lasting control of *Anopheles arabiensis* by a single
389 spray application of micro-encapsulated pirimiphos-methyl (Actellic® 300 CS). *Malar J*
390 [Internet]. BioMed Central; 2014 Jan 29 [cited 2018 Jul 24];13(1):37. Available from:
391 <http://malariajournal.biomedcentral.com/articles/10.1186/1475-2875-13-37>

- 392 23. Lunn D, Spiegelhalter D, Thomas A, Best N. The BUGS project: Evolution, critique and future
393 directions. *Stat Med* [Internet]. John Wiley & Sons, Ltd; 2009 Nov 10 [cited 2019 Jun
394 17];**28**(25):3049–3067. Available from: <http://doi.wiley.com/10.1002/sim.3680>
- 395 24. R Core Team. R: A Language and Environment for Statistical Computing [Internet]. Vienna,
396 Austria: R Foundation for Statistical Computing; 2018. Available from: [https://www.r-](https://www.r-project.org/)
397 [project.org/](https://www.r-project.org/)
- 398 25. Stan Development Team. Stan modeling language user's guide and reference manual.
399 [Internet]. Stan Development Team; 2017. p. 625. Available from: <http://mc-stan.org/>
- 400 26. Riley RD, Simmonds MC, Look MP. Evidence synthesis combining individual patient data and
401 aggregate data: a systematic review identified current practice and possible methods. *J Clin*
402 *Epidemiol.* 2007;**60**(5):431.e1-431.e12.
- 403 27. Paaijmans KP, Thomas MB. The influence of mosquito resting behaviour and associated
404 microclimate for malaria risk. *Malar J* [Internet]. BioMed Central; 2011 Dec 7 [cited 2019 Jun
405 19];**10**(1):183. Available from:
406 <https://malariajournal.biomedcentral.com/articles/10.1186/1475-2875-10-183>
- 407 28. Highton RB, Bryan JH, Boreham PFL, Chandler JA. Studies on the sibling species *Anopheles*
408 *gambiae* Giles and *Anopheles arabiensis* Patton (Diptera: Culicidae) in the Kisumu area,
409 Kenya. *Bull Entomol Res* [Internet]. Cambridge University Press; 1979 Apr 10 [cited 2019 Jun
410 19];**69**(1):43–53. Available from:
411 [https://www.cambridge.org/core/product/identifier/S0007485300017879/type/journal_artic](https://www.cambridge.org/core/product/identifier/S0007485300017879/type/journal_article)
412 [le](https://www.cambridge.org/core/product/identifier/S0007485300017879/type/journal_article)
- 413 29. Mnzava AE, Rwegoshora RT, Wilkes TJ, Tanner M, Curtis CF. *Anopheles arabiensis* and *An.*
414 *gambiae* chromosomal inversion polymorphism, feeding and resting behaviour in relation to
415 insecticide house-spraying in Tanzania. *Med Vet Entomol* [Internet]. 1995 Jul [cited 2019 Jun

- 416 19];9(3):316–24. Available from: <http://www.ncbi.nlm.nih.gov/pubmed/7548951>
- 417 30. Githeko AK, Service MW, Mbogo CM, Atieli FK. Resting behaviour, ecology and genetics of
418 malaria vectors in large scale agricultural areas of Western Kenya. *Parassitologia* [Internet].
419 1996 Dec [cited 2019 Jun 19];38(3):481–9. Available from:
420 <http://www.ncbi.nlm.nih.gov/pubmed/9257337>
- 421 31. Faye O, Konate L, Mouchet J, et al. Indoor Resting by Outdoor Biting Females of *Anopheles*
422 *gambiae* Complex (Diptera: Culicidae) in the Sahel of Northern Senegal. *J Med Entomol*
423 [Internet]. 1997 May 1 [cited 2019 Jun 19];34(3):285–289. Available from:
424 <http://www.ncbi.nlm.nih.gov/pubmed/9151491>
- 425 32. Rajaonarivelo V, Goff G Le, Cot M, Brutus L. Les anophèles et la transmission du paludisme à
426 Ambohimena, village de la marge occidentale des Hautes-Terres Malgaches. *Parasite*
427 [Internet]. 2004 Mar 25 [cited 2019 Jun 19];11(1):75–82. Available from:
428 <http://www.ncbi.nlm.nih.gov/pubmed/15071831>
- 429 33. Killeen GF. Characterizing, controlling and eliminating residual malaria transmission. *Malar J*
430 [Internet]. BioMed Central; 2014 Aug 23 [cited 2018 May 3];13(1):330. Available from:
431 <http://malariajournal.biomedcentral.com/articles/10.1186/1475-2875-13-330>
- 432 34. Turner RM, Omar RZ, Yang M, Goldstein H, Thompson SG. A multilevel model framework for
433 meta-analysis of clinical trials with binary outcomes. *Stat Med* [Internet]. 2000 Dec 30 [cited
434 2019 Jun 17];19(24):3417–3432. Available from: <http://doi.wiley.com/10.1002/1097-0258%2820001230%2919%3A24%3C3417%3A%3AAID-SIM614%3E3.0.CO%3B2-L>
- 435
- 436 35. Turner RM, Spiegelhalter DJ, Smith GCS, Thompson SG. Bias modelling in evidence synthesis. *J*
437 *R Stat Soc Ser A Stat Soc* [Internet]. Wiley-Blackwell; 2009 Jan [cited 2019 Jun 17];172(1):21–
438 47. Available from: <http://www.ncbi.nlm.nih.gov/pubmed/19381328>
- 439 36. Oumbouke WA, Fongnikin A, Soukou KB, Moore SJ, N’Guessan R. Relative performance of

- 440 indoor vector control interventions in the Ifakara and the West African experimental huts.
- 441 *Parasit Vectors* [Internet]. *Parasites & Vectors*; 2017;**10**(1):432. Available from:
- 442 <http://www.ncbi.nlm.nih.gov/pubmed/28927465><http://www.pubmedcentral.nih.gov/articlerender.fcgi?artid=PMC5606011>
- 443
- 444 37. Massue DJ, Kisinza WN, Malongo BB, et al. Comparative performance of three experimental
- 445 hut designs for measuring malaria vector responses to insecticides in Tanzania. *Malar J*
- 446 [Internet]. BioMed Central; 2016;**15**(1):165. Available from:
- 447 [http://www.pubmedcentral.nih.gov/articlerender.fcgi?artid=4793500&tool=pmcentrez&ren](http://www.pubmedcentral.nih.gov/articlerender.fcgi?artid=4793500&tool=pmcentrez&rendertype=abstract)
- 448 [dertype=abstract](http://www.pubmedcentral.nih.gov/articlerender.fcgi?artid=4793500&tool=pmcentrez&rendertype=abstract)
- 449 38. Briët OJ, Smith TA, Chitnis N. Measurement of overall insecticidal effects in experimental hut
- 450 trials. *Parasit Vectors* [Internet]. BioMed Central; 2012 Nov 13 [cited 2017 Dec 13];**5**(1):256.
- 451 Available from: [http://parasitesandvectors.biomedcentral.com/articles/10.1186/1756-3305-](http://parasitesandvectors.biomedcentral.com/articles/10.1186/1756-3305-5-256)
- 452 [5-256](http://parasitesandvectors.biomedcentral.com/articles/10.1186/1756-3305-5-256)

453 **Supplementary Material**

- 454 Supplementary Material 1. Modelling details, including BUGS and Stan code
- 455 Supplementary Material 2. Correlated binomial simulation
- 456 Supplementary data file 1. Datasets for analyses
- 457
- 458

459 **Tables and Figures**

460 Table 1: A list of the studies included and which models are informed by each dataset. Where

461 indicated, the data are provided in full, in Supplementary Data file 1.

Data source	Aggregated data	Comprehensive data
²¹ (using Actellic 300CS, pirimiphos methyl 2 gm ⁻²)	1 time series	-
¹⁹ (using pirimiphos methyl B 30% CS, pirimiphos methyl AA 30% CS, testing <i>An. gambiae</i> sl and <i>An. funestus</i> sl)	16 time series	-
²² (using pirimiphos methyl B 30% CS, pirimiphos methyl BM 30% CS, ,mud walls, <i>An arabiensis</i>)	1 times series	-
²⁰ (using pirimiphos methyl B 30% CS, mud and cement walls, , testing <i>An gambiae</i> sl and <i>An. funestus</i> sl)	4 time series	2 time series (*Study 1 cement, 0.5 gm ⁻¹) (*Study 2 cement, 1 gm ⁻¹)

462 *reference for Figure 6.

		DEAD		Total
		No	Yes	
BLOOD FED	No	X_{00}	X_{01}	$X_{0\cdot}$
	Yes	X_{10}	X_{11}	$X_{1\cdot}$
Total		$X_{\cdot 0}$	$X_{\cdot 1}$	N

463

464 **Figure 1:** Contingency tables of trial data: The number of mosquitoes that are blood-fed ($X_{1\cdot}$) and the

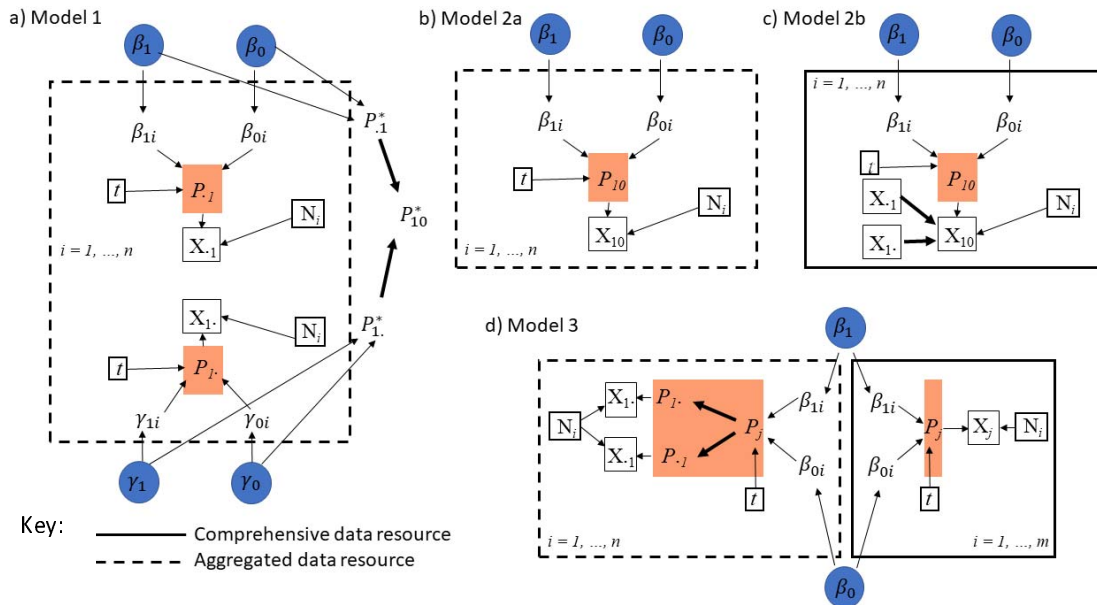
465 number of mosquitoes that are killed ($X_{\cdot 1}$) are known for both data sources but, for the aggregated

466 data we do not know directly the number of mosquitoes that are both alive and blood-fed (X_{10})

467 (circled). We have the full complement of data from the comprehensive source.

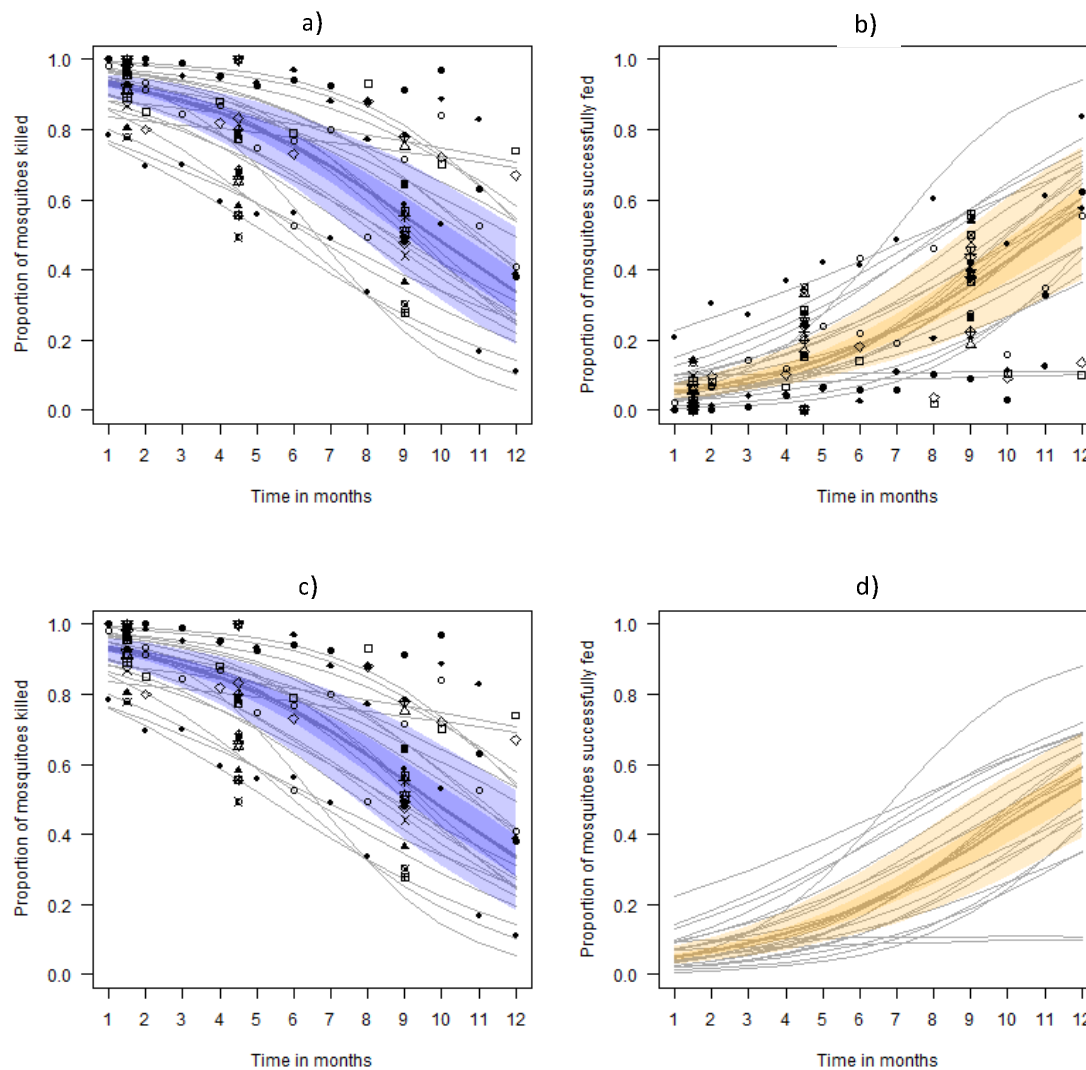
468

469



470

471 **Figure 2:** Directed acyclic graphs (DAGs) for models to assess aggregated (a, b), comprehensive (c) or
 472 both aggregated and comprehensive (d) data. (a) Mosquitoes are counted as killed with no
 473 information on whether they are also blood fed (X_{1i}) or unfed without information that mosquitoes
 474 are also killed (X_{0i}). We can infer marginal global probabilities (shown in orange boxes) then
 475 (assuming independence), after estimating the probability of either outcome (P_{1i}^* and P_{0i}^*), infer
 476 the probability that mosquitoes are both alive and blood fed (P_{01}^*). b) Alternatively, we can adjust
 477 the data using the same assumption of independence prior to fitting the model and fit a logistic
 478 binomial model to the adjusted data. c) The same model structure (Model 2) can be fitted to the
 479 comprehensive data. d) Using evidence synthesis, we can learn from the comprehensive data ($N = 3$
 480 datasets) to infer probabilities that are supported by the aggregated data ($N = 23$ datasets). In each
 481 DAG, j represents the 4 potential outcomes from a feeding attempt, ($P_{01} P_{00} P_{11}$ or P_{10}) for each
 482 dataset i over time t .

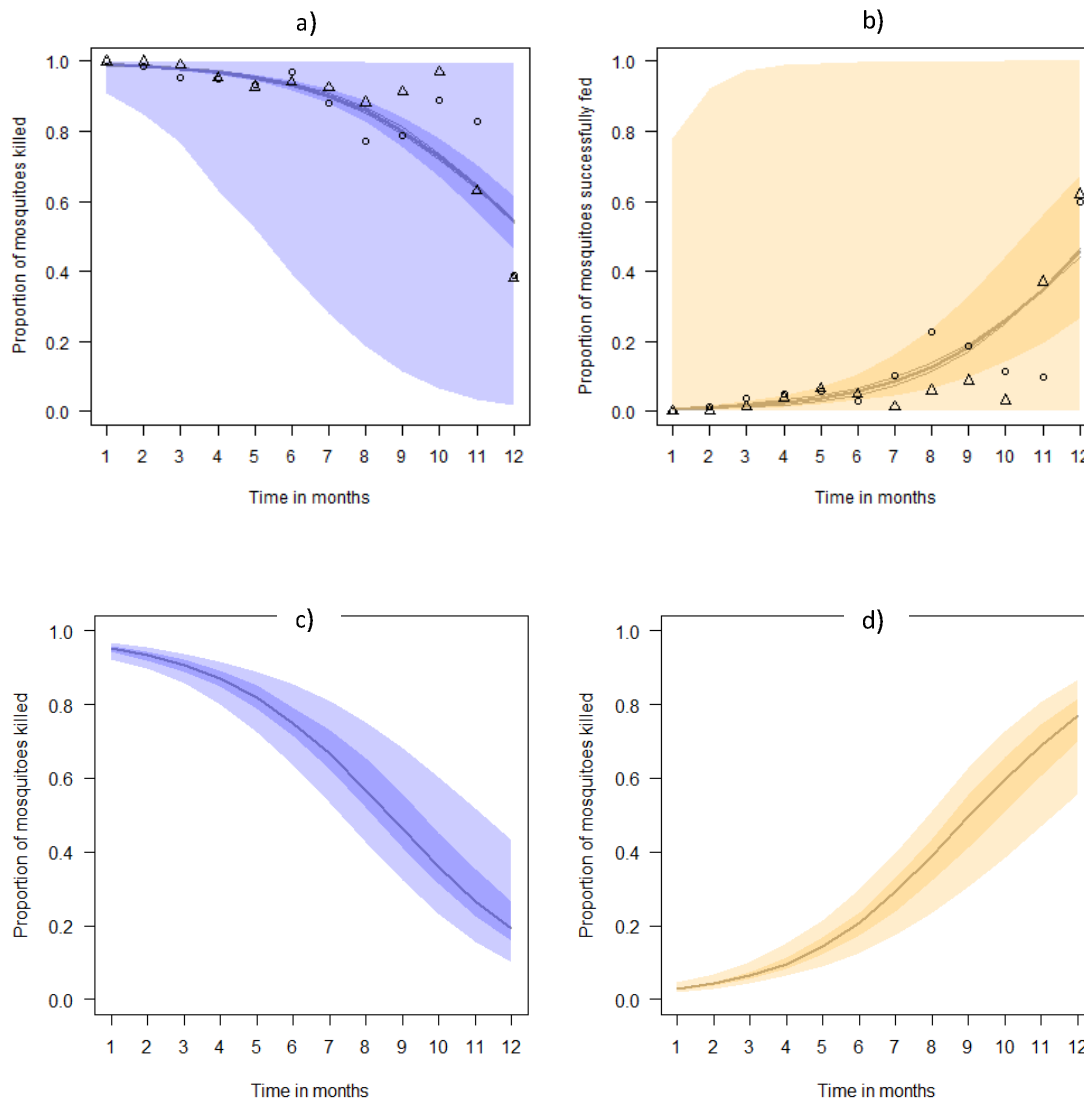


483

484

485 **Figure 3:** Model predictions for the best-estimate (median posterior predictive value) across all study
486 datasets, 50% (darker shaded region) and 95% (lighter shaded region) credible intervals (CrI) from
487 the respective fits to aggregated data. Data for each fit are overlaid onto the figure to demonstrate
488 the suitability of the time-dependent functions. In each of the fits, the individual study predictions
489 are overlaid on the figures by thin grey lines and noted by matching symbol type for each timeseries.
490 Mortality data are identical for Models 1 (a) and 2 (c). The blood-fed data are only available in
491 aggregated format and are either probabilistically (b) or empirically (d) estimated by the respective
492 models.

493 *Anopheles gambiae* s.l. (circles), *An. funestus* s.l. (squares) and *An. arabiensis* (triangles) mosquitoes
494 are noted. The data from the comprehensive source are only used in aggregated format and shown
495 for Benin (dotted line), and Côte d'Ivoire (dashed line).



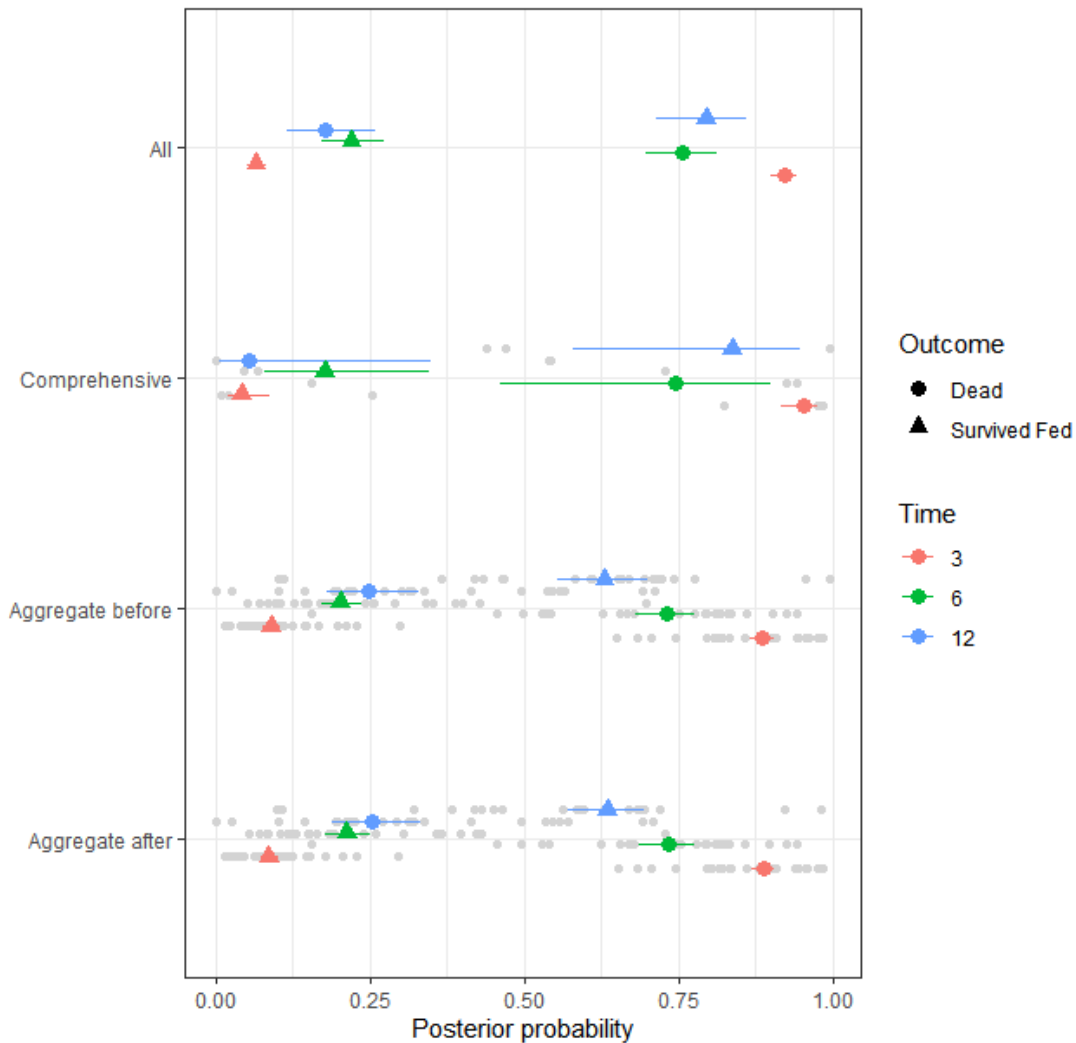
496

497

498 **Figure 4:** Model predictions for the best-estimate (median posterior predictive value) across all study
499 datasets, 50% (darker shaded region) and 95% (lighter shaded region) credible intervals (CrI) from
500 the respective fits to the comprehensive data. Model 2 (a and b) is also fitted to the comprehensive
501 data for which there are fewer data (N = 3 datasets). Model 3 (c and d) is informed by both
502 aggregated and comprehensive data to predict the probability that a mosquito will be killed or will

503 survive and blood-feed. *Anopheles gambiae* s.l. (circles), *An. funestus* s.l. (squares) and *An.*
504 *arabiensis* (triangles) mosquitoes are noted. Symbol shapes correspond to the different study data
505 fitted (overlaid onto a and b) (Benin dotted line, Côte d'Ivoire dashed line).

506



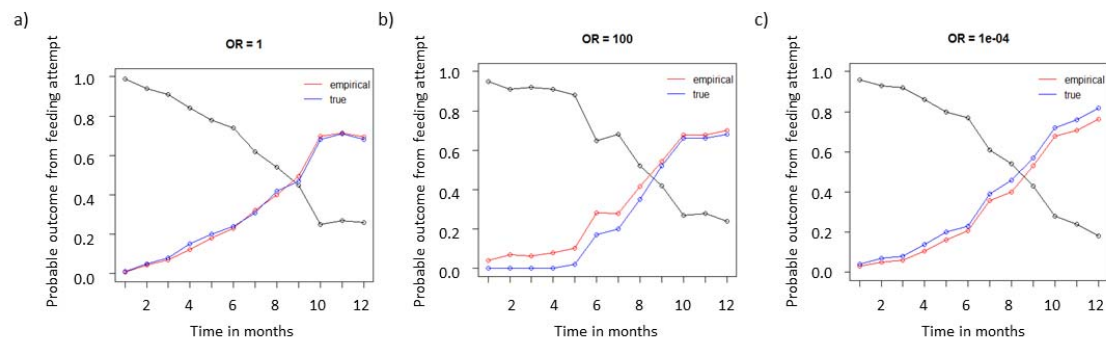
507

508

509 **Figure 5:** A forest plot of posterior predictions for all models, showing median, 25% and 75%
510 percentiles for dead and survived fed probabilities across all study datasets at 3, 6 and 12 months.
511 Individual study predictions are shown with grey points.

512

513



514

515 **Figure 6:** The bias of the evidence synthesis approach given different odds ratios (OR) between

516 simulated aggregated and comprehensive data sets. Weighted proportions survived and fed over

517 time for the true (blue) and empirical (red) estimates. The empirical are the product of the marginal

518 probabilities thus assuming independence. a) An odds ratio of 1 is imposed on the sample data i.e.

519 no correlation. b) Numbers survived and fed over time for the true (blue) and empirical (red)

520 estimates. An odds ratio of 100 is imposed on the sample data. c) An odds ratio of 0.0001 is imposed

521 on the sample data.