

1 Title: Detection of persistent SARS-CoV-2 IgG antibodies in oral mucosal fluid and
2 upper respiratory tract specimens following COVID-19 mRNA vaccination

3

4 Aubree Mades^{1†}, Prithivi Chellamathu^{1†}, Lauren Lopez¹, Noah Kojima², Melanie A.

5 MacMullan^{1,3}, Nicholas Denny¹, Aaron N. Angel¹, Joseph G. Casian¹, Matthew

6 Brobeck¹, Nina Nirema¹, Jeffrey D Klausner⁶, Frederick Turner¹, Vladimir I. Slepnev¹

7 and Albina Ibrayeva^{1,4,5,‡}

8

9 ¹Curative Inc, San Dimas, CA 91773, USA

10 ²Department of Medicine, University of California Los Angeles, Los Angeles, 90095

11

12 ³Mork Family Department of Chemical Engineering and Materials Science, Viterbi

13 School of Engineering, University of Southern California, Los Angeles, CA 90089, USA

14 ⁴Eli and Edythe Broad Center for Regenerative Medicine & Stem Cell Research at USC,

15 Department of Stem Cell Biology and Regenerative Medicine, W.M. Keck School of

16 Medicine

17 ⁵Davis School of Gerontology, University of Southern California, Los Angeles,

18 California, USA

19 ⁶Department of Preventive Medicine, University of Southern California Keck School of

20 Medicine, Los Angeles, 90089

21 [‡]Lead Contact

22 †These authors contributed equally

23 Correspondence should be addressed to:

24 Albina Ibrayeva

25 Curative, Inc.

26 605 East Huntington Drive, Monrovia, CA 91016

27 albina@curative.com

28

29 **Abstract**

30

31 Previous studies have shown that mRNA COVID-19 vaccines are highly effective at preventing
32 SAR-CoV-2 infection by generating an immune response, which in part produces SARS-CoV-2
33 IgG antibodies in serum. In this study, we hypothesized that COVID-19 vaccines may elicit
34 production of SARS-CoV-2 IgG antibodies in the upper respiratory tract, such as in oral and
35 nasal mucosal fluid. To test that hypothesis, we enrolled 114 participants within 3-7 days of
36 receiving the first dose of the Moderna mRNA COVID-19 vaccine and collected oral mucosal
37 fluid samples on days 5, 10, 15, and 20 after each vaccine dose. Of participants naive to SARS-
38 CoV-2 (n = 89), 79 (85.4%) tested positive for SARS-CoV-2 IgG antibodies by time point 2 (10
39 days +/-2 days after first vaccine dose), and 100% tested positive for SARS-CoV-2 IgG by time
40 point 3 (15 days +/- 2 days after first vaccine dose). Additionally, we collected paired oral
41 mucosal fluid and anterior nares samples from 10 participants who had received both vaccine
42 doses. We found that participants had an average SARS-CoV-2 IgG antibody concentration of
43 2496.0 +/- 2698.0ng/mL in nasal mucosal fluid versus 153.4 +/- 141.0ng/mL in oral mucosal

44 fluid. Here, we demonstrate detection and longitudinal persistence of SARS-CoV-2 IgG
45 antibodies in upper respiratory tract specimens following COVID-19 mRNA vaccination.

46

47 **Introduction**

48

49 Results from a phase 3 trial of the Moderna mRNA-1273 vaccine demonstrated 94% efficacy in
50 preventing COVID-19 disease (1). Serum antibodies that were elicited by mRNA-1273 persisted
51 through 6 months following the second vaccination dose, suggesting lasting protection against
52 COVID-19 (2). We hypothesize that mRNA vaccines may elicit a strong antibody response in
53 the upper respiratory tract at the sites where primary infection occurs and propagates, thereby
54 preventing SARS-CoV-2 infection and transmission. An earlier work from our group
55 demonstrated that SARS-CoV-2 IgG antibodies targeting spike protein S1 and S2 can be
56 reliably detected from self-collected oral fluid among participants previously infected with SARS-
57 CoV-2 (3). In the present study, we aimed to 1) assess whether SARS-CoV-2 IgG antibodies
58 targeting the spike protein are detectable in self-collected oral and/or nasal mucosal following
59 COVID-19 mRNA vaccination; and 2) quantify SARS-CoV-2 IgG antibodies in oral mucosal fluid
60 over time in vaccinated participants and in unvaccinated participants following SARS-CoV-2
61 infection.

62

63 **Keywords**

64

65 OSCD: OraSure® Technologies Oral Specimen Collection Device

66 rRT-PCR: Real-time reverse transcription polymerase chain reaction

- 67 ELISA: Enzyme-Linked Immunosorbent Assay
- 68 COVID-19: 2019 novel coronavirus
- 69 RNA: ribonucleic acid
- 70 mRNA: Messenger ribonucleic acid
- 71 IgA: Immunoglobulin A
- 72 IgG: Immunoglobulin G
- 73 IgM: Immunoglobulin M
- 74 SARS-CoV-2: Severe acute respiratory syndrome coronavirus 2
- 75 LOD: Limit of Detection
- 76 LOQ: Limit of Quantification

77

78 **Methods**

79

80 Study enrollment was offered to healthcare workers at a COVID-19 testing site in San Dimas,
81 California, USA. Enrollment was offered to subjects 18 years of age and older who had received
82 the first dose of the COVID-19 Moderna vaccine within the previous 3-7 days, excluding
83 subjects considered vulnerable, such as pregnant people, nursing home residents or other
84 institutionalized persons, prisoners, and persons without decisional capacity. Verbal informed
85 consent was obtained from each subject prior to enrollment in the study and any sample
86 collection.

87

88 Enrolled participants provided oral fluid specimens on days 5, 10, 15, and 20 following their first
89 vaccination dose, and days 5, 10, 15, and 20 following their second vaccination dose. At each

90 time point, one sample was collected using the OraSure® Technologies Oral Specimen
91 Collection Device (OSCD) for SARS-CoV-2 IgG antibody detection, and a second sample was
92 collected using the Curative oral fluid swab test for SARS-CoV-2 RNA detection. Upon
93 enrollment, participants were trained to self-collect specimens using each collection device
94 while observed by study staff. Participants were provided additional test kits and asked to self-
95 collect one of each specimen type unobserved at each follow-up time point, with a two-day
96 grace period for sample collection and two day grace period for returning specimens to the
97 study team.

98
99 63 days +/- 5 days after the second COVID-19 vaccination dose, a sub-group of the cohort self-
100 collected a paired oral and anterior nares specimen, using the OSCD and nasal swab,
101 respectively, to assess the presence of SARS-CoV-2 IgG antibodies in the anterior nares
102 mucosa following COVID-19 vaccination. Each collection device was weighed prior to and
103 following specimen collection to measure the volume of sample collected. The dilution factor of
104 each specimen was calculated by dividing the volume of preservative fluid (800 µL) by the
105 volume of the sample. The final concentration of SARS-CoV-2 IgG antibodies was determined
106 by multiplying the specimen's determined antibody concentration by the calculated dilution
107 factor. Antibody concentration for other specimens was not adjusted for the dilution factor.

108
109 Between April 2020 and December 2020, we collected oral fluid specimens using the OSCD
110 from participants who were previously infected with SARS-CoV-2 in a separate study over time
111 spanning a six month period. Here, we determined titers of SARS-CoV-2 IgG antibodies in
112 these previously collected oral fluid specimens.

113

114 OraSure® Technologies Oral Specimen Collection Device (OSCD) (item number 3001-2870,

115 OraSure® Technologies, Bethlehem, PA)

116 The included cotton pad of the OSCD was brushed 5 times back and forth on each side of the

117 lower and upper gums (lower left, lower right, upper left, and upper right gums for a total of 20

118 times) and then held stationary between the lower gum and the cheek on one side for 2 to 5

119 min. The pad was then placed into the provided tub, containing 800µL of preservative fluid. The

120 cotton pad collects approximately 800 µL of oral mucosal fluid. Specimens were left at room

121 temperature for up to 5 days and then stored at -80°C until use.

122

123 Anterior Nares Swab (item number CY-98000; Huachenyang Technology, China)

124 A flocked nylon swab was swirled around each anterior nare for ten seconds and then placed

125 into the tube provided with the OSCD. The swab collects approximately 25 µL of nasal fluid and

126 the provided tube contains 800 µL of preservative fluid. Specimens were left at room

127 temperature for up to 5 days and then stored at -80°C until use.

128

129 Quantitative SARS-CoV-2 IgG ELISA Assay

130 A quantitative SARS-CoV-2 IgG ELISA was performed on self-collected oral mucosa specimens

131 collected using the OSCD and anterior nares specimens using the flocked swab. All reagents

132 and proteins were obtained from OraSure® Technologies. 25 µL of sample diluent and 100 µL

133 of either oral or nasal mucosa specimen were added to 96-well plates coated with both S1 and

134 S2 subunits of the SARS-CoV-2 viral spike glycoprotein. Plates were incubated at ambient

135 temperature for 1h. Sample wells were then washed six times with wash buffer (20x dilution with

136 ddH₂O, 350 μ L per well) and conjugate solution was added (100 μ L per well). Plates were
137 incubated at ambient temperature for 1 h and sample wells were then washed an additional six
138 times. Next, substrate solution was added (100 μ L per well) and the plate was incubated at
139 ambient temperature for 30 min. Finally, stop solution was added (100 μ L per well). The
140 absorbance of sample wells was measured immediately at 450 nm and 630 nm. Output
141 reports generated the absorbance at 630 nm subtracted from the absorbance at 450 nm.

142

143 To quantify SARS-CoV-2 IgG antibodies in oral mucosal fluid and nasal samples, an S1-specific
144 monoclonal IgG antibody with no known cross-reactivity to the S2 domain of the spike protein
145 was used as a reference antibody. Cross-reactivity from IgA and IgM were minimal as reported
146 by the manufacturer but was also tested. We confirmed the lack of cross-reactivity from IgA with
147 the absence of detectable IgA signal on an assay. A standard curve was developed using a
148 monoclonal IgG antibody targeting the S1 antigen of SARS-CoV-2 at concentrations of 0, 1.5, 3,
149 6, 12, and 20 ng/mL with a polynomial regression curve-fitting model. The standard curve was
150 used to calculate the sample IgG antibody concentration from absorbance values at 450/630 nm
151 from the ELISA assay. The absorbance signal from each sample is directly proportional to the
152 IgG antibody concentration present in the oral fluid (**Fig. 1**). Specimens with antibody titer levels
153 exceeding the range of the standard curve were diluted in a sample dilution buffer and re-ran.
154 The Limit of Detection (LoD) was 1 ng/mL and the Limit of Quantification (LoQ) was 1.5 ng/mL.
155 The calculated values for oral fluid specimens presented in this paper represent the diluted
156 specimen, with approximately 800 μ L of oral fluid diluted in 800 μ L preservative. The real oral
157 fluid IgG antibody concentration is up to several folds larger than the value reported, depending
158 on the volume of fluid collected.

159

160 Curative Real-Time rRT-PCR SARS-CoV-2 Collection and Assay

161 Oral fluid specimens were collected according to the Curative Instructions for Use as described
162 in the FDA-EUA rRT-PCR SARS-CoV-2 Assay which includes expectoration of upper
163 respiratory tract fluid (i.e., 3-5 coughs). Specimens were analyzed for SARS-CoV-2 RNA using
164 the Curative FDA-EUA oral fluid COVID-19 test.

165

166 Data Analysis

167 All data analysis was performed using GraphPad Prism (GraphPad Prism Version 9.0.2)
168 software. Paired, two-sided t-tests were performed to compare differences in average antibody
169 concentrations across conditions. All data can be made available upon request.

170

171 **Ethics**

172 The study protocols were approved by the Advarra Institutional Review Board (IRB#
173 Pro00048737 and Pro00045766).

174

175 **Results**

176

177 In January 2021, we enrolled 114 participants who had received the Moderna mRNA COVID
178 vaccine in the previous 3-7 days. During the study period, 18 participants were excluded from
179 the study due to incomplete sample return. Of the remaining 96 participants, the average
180 participant age was 29.6 years (interquartile range [IQR: 24.3, 30.5 years]). 61 (63.5%)
181 identified as female, and 6 (6.3%) had tested positive for SARS-CoV-2 RNA at some time prior

182 to the study. 1 participant had a previous SARS-CoV-2 infection detected and confirmed by rRT-
183 PCR, but tested negative for SARS-CoV-2 IgG antibodies in both serum and oral specimens
184 prior to COVID-19 mRNA vaccination. This participant was not included in the cohort of
185 participants with previous COVID-19 infection, but developed antibodies by time point 2 (10
186 days +/- 2 days following first vaccination dose) and had a SARS-CoV-2 IgG antibody
187 concentration of 125.57ng/mL at time point 8 (20 days +/- 2 days following second vaccination
188 dose). To the best of our knowledge, the remaining 89 participants were naive to SARS-CoV-2
189 prior to the study.

190

191 Ninety-five participants (99.0%) tested negative for SARS-CoV-2 RNA at every time point
192 throughout the study. 1 participant (1.0%) tested positive for SARS-CoV-2 RNA (on days 5 and
193 10 after receiving the second dose of the Moderna vaccine, with a SARS-CoV-2 CT value of
194 28.77 and 31.42, respectively). This participant did not develop severe symptoms to COVID-19.
195 Reviewing vaccination records and testing results of all healthcare workers at the COVID-19
196 testing site where enrollment occurred throughout the study period, we observed 0.60%
197 prevalence of SARS-CoV-2 infection in employees who had received both doses of a COVID-19
198 vaccine, and 5.94% prevalence in unvaccinated employees.

199

200 Of participants naive to SARS-CoV-2 (n = 89), 79 (88.8%) tested positive for oral mucosa
201 SARS-CoV-2 IgG antibodies by time point 2 (10 days +/-2 days after first vaccine dose), and
202 100% tested positive for oral fluid SARS-CoV-2 IgG by time point 3 (15 days +/- 2 days after
203 first vaccine dose).

204

205 For this group, the average oral fluid IgG antibody concentration 20 days after the first vaccine
206 dose (70.25 +/- 72.95ng/mL) was found to be significantly higher ($p < 0.0001$) than the average
207 oral concentration at 5 days (1.517 +/- 0.25ng/mL). Further, the average concentration 20 days
208 after the second vaccine dose (470.4 +/- 352.2ng/mL) was found to be significantly higher ($p <$
209 0.0001) than the antibody concentration observed 20 days after the first vaccine dose.

210
211 Of the 6 participants who were previously infected with SARS-CoV-2, 6 (100%) tested positive
212 for SARS-CoV-2 IgG antibodies at time point 1 (5 days +/- 2 days). For this group, the average
213 concentration 20 days after the first vaccine dose was 523.1 +/- 548.6ng/mL and the average
214 concentration 20 days after the second dose was 409.1 +/- 237.4ng/mL.

215

216 Paired oral and nasal samples

217 In the subgroup of participants that provided a paired sample of anterior nares swab specimen
218 and OSCD oral fluid specimen following their second vaccination dose (n=10), 100% of the
219 anterior nare mucosa specimens had detectable antibodies with an average IgG antibody
220 concentration of 2496.0 +/- 2698.0 ng/mL when adjusted for individual dilution factor. Paired
221 oral mucosa samples had an average IgG antibody concentration of 153.4 +/- 141.0 ng/mL
222 when adjusted for individual dilution factor. A paired two-tailed t-test revealed a significant
223 difference (p-value = 0.0232) in mean IgG values between SARS-CoV-2 IgG antibody
224 concentrations in each specimen type (**Fig. 2**)

225

226 Participants with prior SARS-CoV-2 infection not vaccinated against COVID-19

227 Self-collected oral fluid samples using the OSCD from the cohort of unvaccinated participants
228 with a previous SARS-CoV-2 infection (n = 31) were evaluated over time (**Fig. 3**) 116 +/- 14
229 days following infection, the average concentration of SARS-CoV-2 IgG antibodies among these
230 individuals was found to be 23.7 +/- 22.5 ng/mL.

231

232 **Discussion**

233

234 To our knowledge, this is the first demonstration that SARS-CoV-2 IgG antibodies can be
235 detected and quantified in self-collected oral fluid and nasal swab specimens following
236 vaccination with a COVID mRNA vaccine. We detected SARS-CoV-2 IgG antibodies in 100% of
237 self-collected oral fluid specimens from participants by 15 days +/- 2 days after the first
238 vaccination dose. Our observations are in agreement with the Moderna vaccine clinical study,
239 which determined that among adults aged 18 to 70 years of age, SARS-CoV-2 IgG antibodies
240 were detected among all participants who received a COVID-19 vaccination series in serum
241 samples by day 15 (4–7).

242

243 In vaccinated participants, the average antibody concentration increased significantly from
244 70.25 ng/mL on time point 4 (20 days +/- 2 days after the first dose), to 470.4 ng/mL on time
245 point 8 (20 +/- 2 days days after the second vaccine dose). Taking account of variation in
246 sample dilution, we expect the real antibody concentration to be 1.5-2-fold higher than these
247 calculated values. Significantly higher SARS-CoV-2 IgG antibody concentrations were observed
248 in anterior nares specimens compared to OSCD oral fluid specimens, after adjusting for dilution

249 factor.

250

251 Of vaccinated participants with a prior infection of SARS-CoV-2 (n=6), all participants (100%)
252 had detectable SARS-CoV-2 IgG antibodies by time point 1 (5 days +/- 2 days after the first
253 vaccination dose). Because we did not collect participant samples prior to time point 1, it is not
254 known how many of those participants had SARS-CoV-2 IgG antibodies prior to vaccination. In
255 this cohort, there were too few individuals to determine whether there was a significant
256 difference in average SARS-CoV-2 IgG antibody titers at any time point following both
257 vaccination doses.

258

259 This study had several limitations. Due to our enrollment of health care workers, the average
260 age of participants was low, with only 8 participants over the age of 50 years and only 1
261 participant over the age of 65 years. Participants were not monitored during specimen collection
262 after the first time point, but the ability of participants to follow instructions for unobserved
263 collection was validated internally prior to sample collection. All participants received the
264 Moderna COVID-19 vaccine, and further research is needed to understand the longitudinal
265 antibody response in oral or nasal mucosal fluid following other COVID-19 vaccines, such as
266 the mRNA Pfizer/BioNtech vaccine and the viral vector Janssen vaccine. It is not yet known how
267 oral mucosal fluid antibody titers are directly comparable to serum titers for the protection of
268 infection or disease. Self-collected oral mucosal fluid specimens for SARS-CoV-2 quantification
269 could have potential applications in monitoring population antibody seroprevalence and long-
270 term immune response to COVID-19 vaccines.

271

272 Quantification of SARS-CoV-2 IgG antibodies in oral fluid mucosal specimens of non-vaccinated
273 individuals with previous SARS-CoV-2 infection demonstrated antibody persistence through 3.5
274 months without a significant decline. This may suggest persistence of SARS-CoV-2 IgG
275 antibodies in oral mucosal fluid post-vaccination.

276

277 **Conclusions**

278

279 To the best of our knowledge, this is the first demonstration of persistent IgG antibody presence
280 in oral and nasal mucosa following COVID-19 vaccination with a COVID-19 mRNA vaccine.

281 High antibody concentration at the sites of the primary infection may play a direct role in
282 preventing viral transmission. Additional *in-vitro* experiments to study the effects of treating
283 SARS-CoV-2 viral cultures with oral mucosal samples from vaccinated individuals would be
284 required to test this hypothesis.

285

286 All 95 participants (100%) who received a COVID-19 mRNA vaccination had detectable SARS-
287 CoV-2 IgG antibodies in oral mucosa fluid by 15 days +/- 2 days after their first COVID-19
288 vaccine dose. On average, participants with no prior history of SARS-CoV-2 infection developed
289 a higher average antibody concentration after the second vaccine dose. Participants with a
290 history of COVID-19 experienced a greater initial antibody titer, and greater titers at each time
291 point, in comparison to participants naive to SARS-CoV-2, but no significant change in antibody
292 titer following their second vaccination dose. Further research is needed to characterize how
293 SARS-CoV-2 respiratory IgG antibody titers are elicited by different commercially available

294 COVID-19 vaccines, among older adults, and over a longer study period, to monitor the scale
295 and the duration of the protection against COVID-19 infection via IgG antibodies.

296

297 Testing of the respiratory specimens for SARS-CoV-2 IgG antibody offers a self-collected, non-
298 invasive specimen collection alternative to serum specimens that can be scaled with a higher
299 expected patient compliance.

300

301 **Author Contributions**

302 A.M. designed the study protocol, designed experiments, analyzed and interpreted data, and
303 drafted the manuscript. P.C. designed and ran experiments, analyzed and interpreted data, and
304 drafted the manuscript. L.L., M.B., and N.N. designed the study protocol and sample collection
305 and edited the manuscript. N.K. and J.D.K. provided medical oversight, conceptualized and
306 designed the study protocol, and edited the manuscript. M.A.M analyzed and interpreted data
307 and edited the manuscript. N.D., A.N.A., and J.G.C. ran experiments. F.T. and V.I.S
308 conceptualized and designed the study protocol, designed experiments, and edited the
309 manuscript. A.I. oversaw and designed experiments, oversaw data collection and analysis, and
310 drafted the manuscript.

311

312 **Declarations**

313 All authors are, or were at the time of research, employed by Curative Inc., a diagnostics
314 company. F.T. and V.S. are shareholders of Curative Inc. Curative Inc. does not have conflicts
315 of interest with OraSure® Technologies to disclose.

316

317 **Funding**

318 This study was funded by Curative Inc.

319

320 **Acknowledgements**

321 We thank Ronell Lopez, Marilisa Santacruz, Joseph Kapcia, Colin Witt, Cedic Bagos, Christina

322 Le, Alexis Alexander, and Stephanie Zhang from Curative Inc.

323

324 **References**

- 325 1. Baden LR, El Sahly HM, Essink B, Kotloff K, Frey S, Novak R, et al. Efficacy and Safety
326 of the mRNA-1273 SARS-CoV-2 Vaccine. *N Engl J Med*. 2021;384(5):403–16.
- 327 2. Makowski M, O’Connell S, McDermott AB, Flach B, Ledgerwood JE, Mascola JR, et al.
328 Antibody Persistence through 6 Months after the Second Dose of mRNA-1273 Vaccine
329 for Covid-19. *NEJM*. 2021;1–3.
- 330 3. MacMullan MA, Chellamuthu P, Mades A, Das S, Turner F, Slepnev VI, et al. Detection of
331 SARS-CoV-2 antibodies in oral fluid obtained using a rapid collection device. *J Clin*
332 *Microbiol*. 2021;59(2).
- 333 4. Widge AT, Jackson LA, Anderson EJ, Roberts PC, Makhene M, Chappell JD, et al.
334 Durability of Response after SARS-CoV-2 mRNA-1273 Vaccination. *NEJM*. 2021;
- 335 5. Sahin U, Muik A, Derhovanessian E, Vogler I, Kranz LM, Vormehr M, et al. COVID-19
336 vaccine BNT162b1 elicits human antibody and TH1 T cell responses. *Nature* [Internet].
337 2020;586(7830):594–9. Available from: <http://dx.doi.org/10.1038/s41586-020-2814-7>
- 338 6. Anderson EJ, Roupael NG, Widge AT, Jackson LA, Roberts PC, Makhene M, et al.
339 Safety and Immunogenicity of SARS-CoV-2 mRNA-1273 Vaccine in Older Adults. *N Engl*
340 *J Med*. 2020;383(25):2427–38.
- 341 7. Jackson LA, Anderson EJ, Roupael NG, Roberts PC, Makhene M, Coler RN, et al. An
342 mRNA Vaccine against SARS-CoV-2 — Preliminary Report. *N Engl J Med*.
343 2020;383(20):1920–31.

344

345

346 **Figure Captions**

347 **Figure 1. Quantification of IgG antibodies against SARS-CoV-2 in oral mucosa in**
348 **participants with (n = 6) and without (n = 89) prior SARS-CoV-2 infection that were**
349 **vaccinated by the Moderna COVID-19 vaccine. A)** Monoclonal IgG targeting the S1 antigen
350 of SARS-CoV-2 was used to develop a quantitative assay for antibody quantification. The
351 standard curve was developed based on monoclonal IgG antibody concentrations of 0ng/mL,
352 1.5ng/mL, 3ng/mL, 6ng/mL, 12ng/mL and 20ng/mL. The expression obtained from this standard
353 curve, $y = -0.00121x^2 + 0.128x + 0.0163$, was used to determine sample concentrations from
354 optical density (O.D.) measured at 450nm. **B)** Antibody quantitation in COVID-naive individuals
355 (n = 89) with a 95% confidence interval (CI). 20 days after the first vaccine dose, the average
356 antibody concentration among individuals was 70.25 +/- 73.0ng/mL while 20 days after the
357 second vaccine dose, the average antibody concentration among individuals was 470.4 +/-
358 352.2ng/mL. The difference between means across collected timepoints was found to be
359 significant ($p < 0.0001$) between 5 and 20 days and 20 and 48 days. **C)** Antibody quantification
360 in individuals previously infected by SARS-CoV-2 (n = 6) with a 95% CI. 20 days after the first
361 vaccine dose, the average antibody concentration among individuals was 523.1 +/- 548.6ng/mL
362 while 20 days after the second vaccine dose, the average antibody concentration among
363 individuals was 409.1 +/- 237.4ng/mL.

364

365 **Figure 2. Antibody quantification in paired specimens collected by both anterior nares**
366 **swabs and oral OSCDs reveal a higher antibody concentration in the nasal passage.** After
367 receiving both doses of the Moderna vaccine, all individuals (n = 10) had detectable antibodies
368 collected from their anterior nares with an average concentration of 2496.0 +/- 2698.0ng/mL in

369 nasal fluid. The same individuals had a mean concentration of 153.4 +/- 141.0ng/mL in saliva
370 collected using the Oral OSCD. Concentration values were adjusted for sample collection and
371 diluent volumes. The difference between mean antibody concentrations from different collection
372 methods was found to be significant using a paired two-tailed t-test ($p = 0.0232$).

373

374

375 **Figure 3. Quantification of IgG antibodies against SARS-CoV-2 in oral fluid samples**
376 **collected from individuals (n = 31) infected by SARS-CoV-2 in the months following**
377 **symptom onset.** 116 +/- 14 days post symptom onset, individuals had an average SARS-CoV-
378 2 S1 protein concentration of 23.7 +/- 22.5 ng/mL.

379

Figure 1

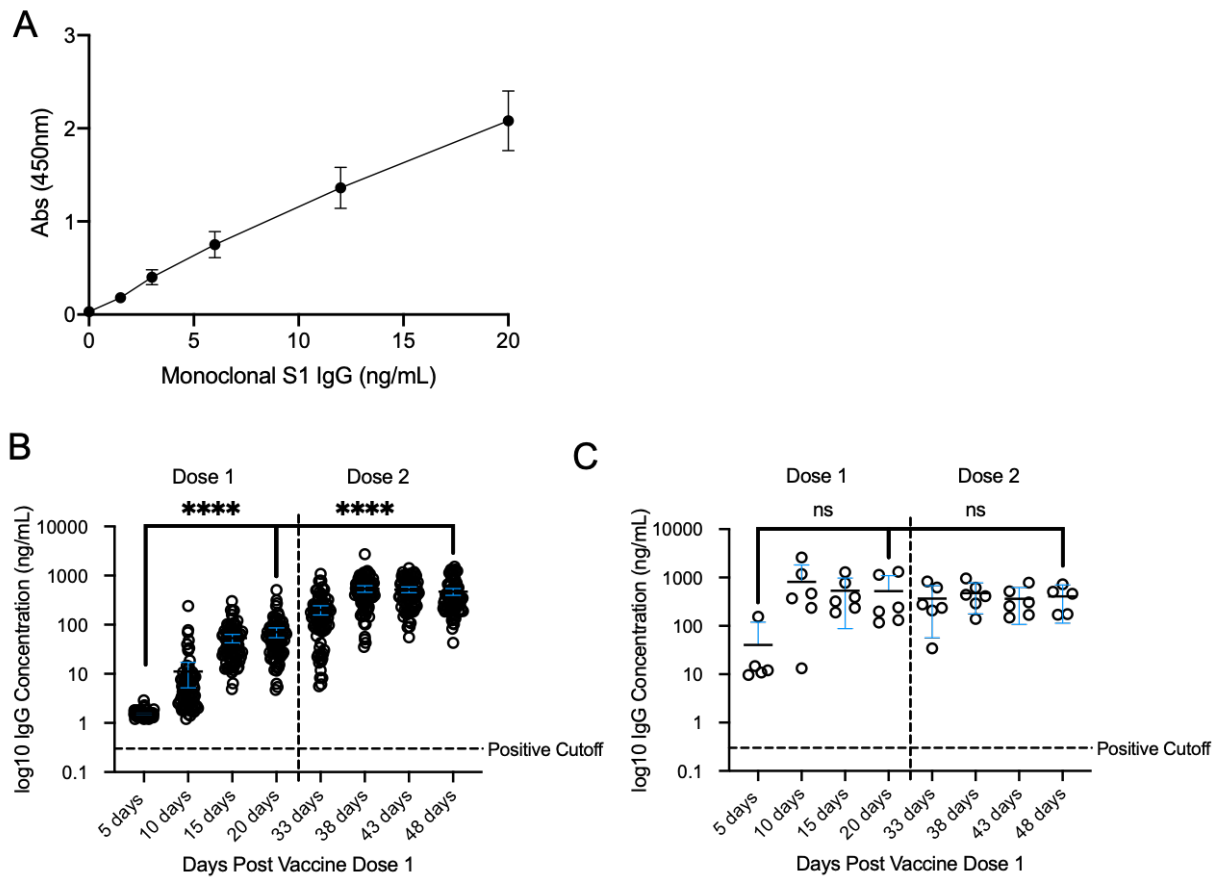


Figure 2

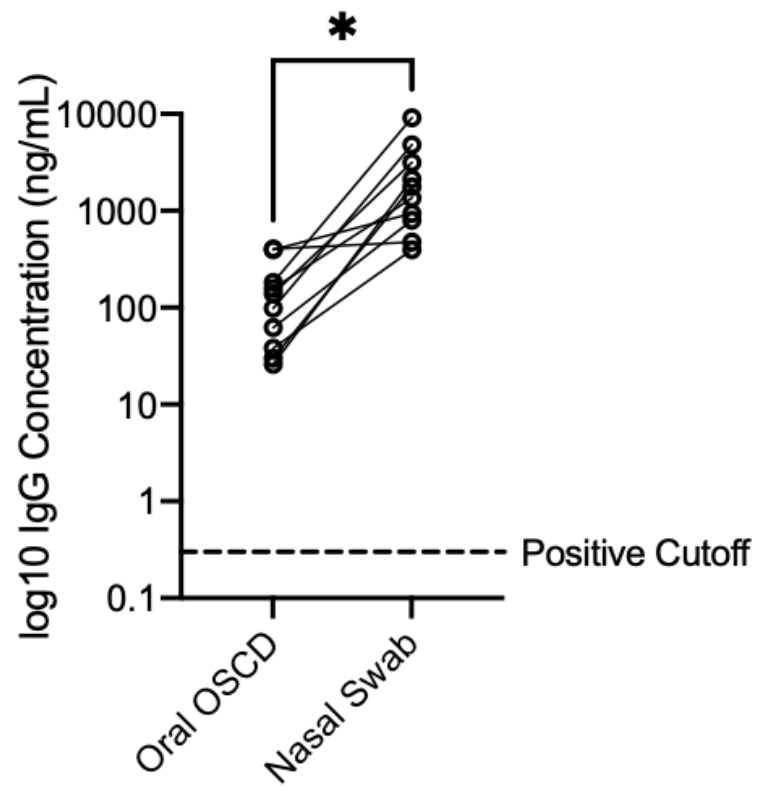


Figure 3

