

1 **Illness duration and symptom profile in a large cohort of** 2 **symptomatic UK school-aged children tested for SARS-** 3 **CoV-2**

4
5 Erika Molteni PhD^{1*}, Carole H. Sudre PhD^{1,2,3*}, Liane S. Canas PhD¹, Sunil S. Bhopal PhD⁴,
6 Robert C. Hughes MPH MB ChB⁵, Michela Antonelli PhD¹, Benjamin Murray MSc¹, Kerstin
7 Kläser MSc¹, Eric Kerfoot PhD¹, Liyuan Chen MSc¹, Jie Deng PhD¹, Christina Hu BA⁶,
8 Somesh Selvachandran MEng⁶, Kenneth Read BSc⁶, Joan Capdevila Pujol PhD⁶, Alexander
9 Hammers PhD^{1,7}, Tim D. Spector PhD⁸, Sebastien Ourselin PhD¹, Claire J. Steves PhD⁸,
10 Marc Modat PhD¹, Michael Absoud PhD^{9,10}, Emma L. Duncan PhD^{8,10}.

- 11
12 1. School of Biomedical Engineering & Imaging Sciences, King's College London,
13 London, UK.
14 2. MRC Unit for Lifelong Health and Ageing, Department of Population Health Sciences,
15 University College London, London, UK.
16 3. Centre for Medical Image Computing, Department of Computer Science, University
17 College London, London, UK.
18 4. Population Health Sciences Institute, Faculty of Medical Sciences, Newcastle
19 University, Newcastle upon Tyne, Tyne and Wear, UK.
20 5. Department of Population Health, Faculty of Epidemiology & Population Health,
21 London School of Hygiene & Tropical Medicine, Keppel Street, London, UK.
22 6. Zoe Global, London, UK.
23 7. King's College London & Guy's and St Thomas' PET Centre, London, UK.
24 8. Department of Twin Research and Genetic Epidemiology, King's College London,
25 London, UK.
26 9. Children's Neurosciences, Evelina London Children' Hospital, St Thomas' Hospital,
27 King's Health Partners, Academic Health Science Centre, London, UK.
28 10. Department of Women and Children's Health, Faculty of Life Sciences and Medicine,
29 School of Life Course Sciences, King's College London, London, UK.

30 * Equal contribution

33 **Corresponding Author:**

34 Emma L. Duncan, MBBS, FRACP, FRCP, PhD

NOTE: This preprint reports new research that has not been certified by peer review and should not be used to guide clinical practice.

35 Department of Twin Research and Genetic Epidemiology, and Department of Women and
36 Children's Health
37 King's College London,
38 WC2R 2LS, Strand, London, UK.
39 emma.duncan@kcl.ac.uk

40

41 **Key words**

42 Long COVID; ongoing symptomatic COVID-19; post-COVID-19 syndrome; SARS-CoV-2
43 prolonged infection; school-children; paediatric COVID-19.

44

45 **Word count:** 4649 without abstract; 5012 with abstract.

46 **Number of Tables:** 2

47 **Number of Figures:** 4

48 **Number of Supplementary Tables:** 5

49 **Number of Supplementary Figures:** 6

50

51 **Research in context**

52

53 **Evidence before this study:** SARS-CoV-2 in children is usually asymptomatic or manifests
54 as a mild illness of short duration. Concerns have been raised regarding prolonged illness in
55 children, with no clear resolution of symptoms several weeks after onset, as is observed in
56 some adults. How common this might be in children, the clinical features of such prolonged
57 illness in children, and how it might compare with illnesses from other respiratory viruses
58 (and with general population prevalence of these symptoms) is unclear.

59

60 **Added value of this study:** We provide systematic description of COVID-19 in UK school-
61 aged children. Our data, collected in a digital surveillance platform through one of the largest
62 UK citizen science initiatives, show that long illness duration after SARS-CoV-2 infection in
63 school-aged children does occur, but is uncommon, with only a small proportion of children
64 experiencing illness duration beyond four weeks; and the symptom burden in these children
65 usually decreases over time. Almost all children have symptom resolution by eight weeks,
66 providing reassurance about long-term outcomes. Additionally, symptom burden in children
67 with long COVID was not greater than symptom burden in children with long illnesses due to
68 causes other than SARS-CoV-2 infection.

69

70 **Implications of all the available evidence:**

71 Our data confirm that COVID-19 in UK school-aged children is usually of short duration and
72 of low symptom burden. Some children do experience longer illness duration, validating their
73 experience; however, most of these children usually recover with time. Our findings highlight
74 that appropriate resources will be necessary for any child with prolonged illness, whether
75 due to COVID-19 or other illness. Our study provides timely and critical data to inform
76 discussions around the impact and implications of the pandemic on paediatric healthcare
77 resource allocation.

78

79

80 **Abstract**

81

82 **Background**

83 In children, SARS-CoV-2 is usually asymptomatic or causes a mild illness of short duration.
84 Persistent illness has been reported; however, its prevalence and characteristics are
85 unclear. We aimed to determine illness duration and characteristics in symptomatic UK
86 school-aged children tested for SARS-CoV-2 using data from the COVID Symptom Study,
87 the largest UK citizen participatory epidemiological study to date.

88

89 **Methods**

90 Data from 258,790 children aged 5-17 years were reported by an adult proxy between 24
91 March 2020 and 22 February 2021. Illness duration and symptom profiles were analysed for
92 all children testing positive for SARS-CoV-2 for whom illness duration could be determined,
93 considered overall and within younger (5-11 years) and older (12-17 years) groups. Data
94 from symptomatic children testing negative for SARS-CoV-2, matched 1:1 for age, gender,
95 and week of testing, were also assessed.

96

97 **Findings**

98 1,734 children (588 younger, 1,146 older children) had a positive SARS-CoV-2 test result
99 and calculable illness duration within the study time frame. The commonest symptoms were
100 headache (62.2%) and fatigue (55.0%). Median illness duration was six days (vs. three days
101 in children testing negative), and was positively associated with age (r_s 0.19, $p < 1.e-4$) with
102 median duration of seven days in older vs. five days in younger children.

103

104 Seventy-seven (4.4%) children had illness duration ≥ 28 days (LC28), more commonly
105 experienced by older vs. younger children (59 (5.1%) vs. 18 (3.1%), $p = 0.046$). The
106 commonest symptoms experienced by these children were fatigue (84%), headache (80%)
107 and anosmia (80%); however, by day 28 the symptom burden was low (median, two). Only
108 25 (1.8%) of 1,379 children experienced symptoms for ≥ 56 days. Few children (15 children,
109 0.9%) in the negatively-tested cohort experienced prolonged symptom duration; however,
110 these children experienced greater symptom burden (both throughout their illness and at day
111 28) than children positive for SARS-CoV-2.

112

113 **Interpretation**

114 Some children with COVID-19 experience prolonged illness duration. Reassuringly,
115 symptom burden in these children did not increase with time, and most recovered by day 56.
116 Some children who tested negative for SARS-CoV-2 also had persistent and burdensome

117 illness. A holistic approach for all children with persistent illness during the pandemic is
118 appropriate.

119

120 **Authors contributions**

121 EM, CHS, LSC, ELD performed the analyses
122 BM, EK, LC, JD, MM performed data extraction and curation
123 EM, SSB, RCH, AH, MA, ELD wrote the manuscript
124 CH, SSe, KR, JCP developed the data collection system
125 TDS, SO, CJS conceived the CSS and obtained funds
126 MM, SO, CJS, ELD coordinated this research
127 All the authors critically reviewed the manuscript

128

129 **Declaration of interests**

130 CH, SS, KR, JCP are employees of Zoe Global Ltd.
131 All other authors have nothing to declare.

132

133 **Role of Funding Source**

134 This work is supported by the Wellcome Engineering and Physical Sciences Research
135 Council (EPSRC) Centre for Medical Engineering at King's College London (WT
136 203148/Z/16/Z) and the UK Department of Health via the National Institute for Health
137 Research (NIHR) comprehensive Biomedical Research Centre (BRC) award to Guy's & St
138 Thomas' NHS Foundation Trust in partnership with King's College London and King's
139 College Hospital NHS Foundation Trust. Investigators also received support from the
140 Medical Research Council (MRC) and British Heart Foundation, the UK Research and
141 Innovation London Medical Imaging & Artificial Intelligence Centre for Value Based
142 Healthcare, and the Wellcome Flagship Programme (WT213038/Z/18/Z). EM is funded by
143 an MRC Skills Development Fellowship Scheme at KCL. CHS is supported by an
144 Alzheimer's Society Junior Fellowship (AS-JF-17-011). ZOE Global supported all aspects of
145 building and running the app and service to all users worldwide.

146

147 **Ethics Committee Approval**

148 Ethics approval for this study was granted by the KCL Ethics Committee (reference LRS-
149 19/20-18210); all participants (here, proxy-reporting adults) provided consent.

150

151 Introduction

152 To date, severe acute respiratory syndrome-related coronavirus 2 (SARS-CoV-2) has
153 caused >120 million cases of Coronavirus Disease 2019 (COVID-19) and 2.5 million deaths
154 globally.¹ In adults, SARS-CoV-2 causes a predominantly respiratory illness² of median
155 duration 11 days.³ In contrast, children with SARS-CoV-2 infection are often asymptomatic
156 (43%-68%⁴) or have relatively mild symptoms, most commonly cough and fever;^{4,5} and life-
157 threatening illness or death is rare. 1,575 children (aged 0-17 years) hospitalised in England
158 from 19 March 2020 to 3 March 2021 tested positive for SARS-CoV-2 (though COVID-19
159 may not necessarily have been the reason for hospitalisation⁶) and 29 deaths due to COVID-
160 19 were reported in children and young people across the UK from 1 March 2020 to 29
161 January 2021 (0.59% of estimated all-cause deaths in this age group during this period⁷).
162 The pandemic has also seen a new rare condition, multisystem inflammatory syndrome in
163 children (MIS-C), typically presenting 2-4 weeks after acute SARS-CoV-2 infection.⁸

164
165 Some adults with SARS-CoV-2 infection experience prolonged illness duration ("Long
166 COVID").^{9,10} The King's College London (KCL) COVID Symptom Study (CSS),¹¹ involving
167 >4.5 million UK participants, showed that 13.3% adults with COVID-19 had symptoms for ≥ 4
168 weeks (LC28) and 4.5% ≥ 8 weeks (LC56).³ Whether some children may also experience
169 prolonged illness duration after COVID-19¹⁰ and, if so, how this compares with other
170 illnesses, is unclear.

171
172 In September 2020, coinciding with UK schools re-opening, governance for CSS data usage
173 was extended to allow analysis of data from children (i.e., individuals aged <18 years). The
174 UK subsequently experienced further waves of the pandemic, during which time there was
175 widespread testing availability for individuals experiencing fever, cough and/or anosmia, in
176 contrast to the limited access during the first wave when testing was mostly restricted to
177 individuals presenting to hospital.^{12,13} Moreover, stay-at-home directives and school closures
178 over the 2020-21 UK winter resulted in unusually low circulation of viruses such as influenza,
179 adenovirus, and respiratory syncytial virus.¹⁴ However, symptom overlap meant many
180 individuals (adults and children) with respiratory illnesses other than COVID-19 were tested
181 for SARS-CoV-2.

182
183 Here we report illness duration, individual symptom prevalence and duration, and symptom
184 burden in UK school-aged children testing positive for SARS-CoV-2, and provide similar data

185 for symptomatic children testing negative during the same period. We also present
186 prevalence and characteristics of long COVID in children.
187

188 **Methods**

189 Data were acquired from CSS, through a mobile application launched jointly by Zoe Global
190 Ltd. and KCL on 24 March 2020.¹¹ Briefly, individuals report through a smartphone
191 application their symptomatology, any SARS-CoV-2 testing, vaccination, and health care
192 access. Symptom assessment includes direct questions about specific symptoms
193 (Supplementary Table 1) and free-text entry.¹¹ Adult contributors can also proxy-report for
194 other persons (children, elderly relatives, etc.). The relationship between contributor and
195 proxy-reported individual(s) is not solicited and there is no data linkage between them.
196 Children aged 16-17 years can use the app independently or be proxy-reported by an adult.
197

198 UK data from school-aged children (aged 5-17 years) were available from app launch to 22
199 February 2021, which latter date corresponds to eight weeks after peak UK SARS-CoV-2
200 positive specimen date.¹⁵ The cohort was analysed overall and within two age groups:
201 younger children, aged 5-11 years (UK primary school-aged children) and older children,
202 aged 12-17 years (UK secondary school-aged children).
203

204 Aligning with our previous publications in adults,^{3,11} children were considered symptomatic of
205 COVID-19 if proxy-reported with relevant symptoms¹¹ (Supplementary Table),¹⁶ with first
206 symptom(s) presenting within a timeframe of one week before and two weeks after infection
207 confirmation (either SARS-CoV-2 polymerase chain reaction or lateral flow test). Illness
208 duration was calculated from first symptom(s) (having been previously asymptomatic) until
209 recovery (return to asymptomatic state or, if proxy-reporting ceased prior to an asymptomatic
210 report, the final proxy-report). Individuals reported as asymptomatic but subsequently re-
211 reported with symptoms within one week of last symptomatic report were considered still
212 unwell from initial presentation (i.e., having relapsing/remitting illness); calculation of illness
213 duration included these short asymptomatic periods. Children with reporting gaps longer
214 than one week between symptomatic reports were excluded. Individual symptom prevalence
215 and duration were assessed, with individual symptom duration calculated as time between
216 first and last report for that symptom. Symptom burden was calculated as the number of
217 different symptoms reported at least once over a defined timeframe (during first week, first
218 28 days, ≥ 28 days until end of illness, and over entire illness duration). Consistent with our
219 previous adult study,³ we termed illness with symptoms ≥ 28 days as LC28; and ≥ 56 days,

220 LC56. Thus, by virtue of census dates LC28 could only be determined in proxy-reported
221 children whose symptoms commenced on or before 24 January 2021, and for LC56 on or
222 before 29 December 2020 (the peak positive specimen date¹⁵). Symptom profiles were also
223 assessed in children presenting for hospital-based care (presenting to the emergency
224 department or admitted to hospital), where hospital presentation followed symptom
225 commencement.

226

227 Several direct symptom questions were added to the app on 4 November 2020
228 (Supplementary Table 2). Data from these additional questions are presented in
229 Supplementary Figure 1 but were not included in illness duration or symptom burden
230 calculations for the main analysis.

231

232 Free-text reporting was also possible across the entire period. Free-text data were divided
233 into themes using frequency of descriptive words, with each item within the themes
234 independently scrutinised by two clinicians (MAb, ELD) to ensure appropriate categorisation.
235 Individuals reporting free-text symptoms within those themes were then counted. Free-text
236 data are reported here as descriptive statistics (Supplementary Table 3) and were not
237 included in calculating illness duration or symptom burden. Free-text data were also
238 searched for specific neurological terms (e.g., weakness, difficulties with balance, paralysis,
239 seizures, fits, convulsions, paroxysms, tics) and symptoms potentially affecting attention,
240 behaviour, learning, and/or school performance (e.g., anxiety, low mood, and irritability).
241 Symptoms already assessed by direct question (Supplementary Table 1) were excluded
242 from free-text searching, to avoid duplication.

243

244 Symptom profile and duration were also assessed in children testing negative for SARS-
245 CoV-2 using a randomly selected control cohort (matched 1:1 for age, gender, and week of
246 testing), and compared to children testing positive, analysed identically.

247

248 Proxy-reporting density was defined as the number of episodes of proxy-reporting over the
249 illness duration, and persistence as proxy-reporting until return to healthy state.

250

251 Prevalence data for common winter circulating viruses were obtained from the Public Health
252 England weekly national influenza and COVID-19 surveillance report.¹⁴

253

254 Data are presented using descriptive statistics. Results are presented as median and
255 interquartile ranges. Due to rarity (with most percentages <5%) confidence intervals were
256 calculated using Poisson distribution. Comparisons of data between groups used Wilcoxon

257 signed-rank test or Chi-squared/Fisher's exact tests, as appropriate. Spearman correlation
258 testing was used to assess correlation of illness duration with age.

259

260 **Results**

261 Recruitment is outlined in Figure 1. Overall, 258,790 children aged 5-17 years were proxy-
262 reported between 24 March 2020 and 22 February 2021. A positive SARS-CoV-2 test result
263 was reported in 6,975 children, of whom 1,912 (666 younger, 1,246 older) children had a
264 calculable illness duration and requisite proxy-report logging. As only 36 of these children
265 had illness onset prior to 1 September 2020 (which date corresponded to return-to-school),
266 and with limited community access to testing early in the UK pandemic,¹³ analyses were
267 restricted to children with illness onset after 1 September 2020. Illness onset had to
268 commence on or before 24 January 2021 for illness duration ≥ 4 weeks to be evident, per
269 LC28 definition;³ 1,734 (588 younger, 1,146 older) children were proxy-logged within the
270 requisite timeframe. Similarly, 1,379 (445 younger; 934 older) children had symptoms
271 commencing on or before 29 December 2020, allowing illness duration ≥ 8 weeks to be
272 evident, per LC56 definition.³

273

274 Among 16- and 17-year-old individuals, 29,047 self-logged data (447 reporting testing
275 positive) compared to 32,271 proxy-reported (1,197 reported as testing positive). Illness
276 duration could only be calculated in ten self-logged versus 381 proxy-logged 16- and 17-
277 year-olds; and concurrent self-reporting and proxy-reporting could not be excluded. Thus,
278 only proxy-reported data are presented here.

279

280 ***Illness in children who tested positive for SARS-CoV-2.***

281

282 The median illness duration in children with COVID-19 was six [IQR 3;11] days (Table 1).
283 Illness duration was shorter in younger compared with older children (five [IQR 2;9] vs.
284 seven [IQR 3;12] days, Mann-Whitney U test $p < 1.e-5$); and age correlated with illness
285 duration (r_s 0.19, $p < 1.e-4$).

286

287 Individual symptom prevalence and duration are shown in Table 2, Figure 2, and Figure 3.
288 Overall, the most reported symptoms were headache (reported in 62.2% [55.1% younger,
289 65.9% older] children) and fatigue (55.0% [43.9% younger, 60.7% older] children).
290 Subsequent symptoms ranked by frequency were in younger children: fever (43.7%), sore
291 throat (36.2%), abdominal pain (27.7%), and persistent cough (24.7%); in older children:

292 sore throat (51.0%), anosmia (48.3%), fever (34.6%), and persistent cough (26.0%). During
293 first week of illness, the median symptom burden was three [IQR 2;6] overall (three [IQR 2;5]
294 in younger, four [IQR 2;6] in older children).

295

296 Sixteen younger and 21 older children testing positive for SARS-CoV-2 subsequently
297 attended hospital. Symptom profiles of these children compared with children managed in
298 the community are shown in Supplementary Figure 2. No formal statistical comparisons
299 were undertaken between hospital and community cases, given the low numbers of hospital
300 attendees.

301

302 ***Long illness duration in children who tested positive for SARS-CoV-2.***

303

304 Overall, 77 (18 younger, 59 older) of 1,734 children (4.4% [95% CI 3.5-5.5]) had illness
305 duration ≥ 28 days, meeting LC28 definition. The median symptom burden in these children
306 was six symptoms [IQR 4;8] reported at least once during first week of illness, and eight
307 symptoms [IQR 6;9] reported at least once over the entire illness duration. However, by day
308 28, median symptom burden was low, at two [IQR 1;4] symptoms (younger children: three
309 [IQR 1;4]; older children, one [IQR 1;3]). The commonest symptoms experienced by these
310 children over their entire illness were fatigue (experienced by 84.4%), headache (77.9%),
311 anosmia (77.9%) and sore throat (74.0%). Figure 4 is a heat map of symptom profile and
312 progression over the first 28 days in children with LC28.

313

314 Twenty-five of 1,379 children (1.8% [95% CI 1.2-2.7]) had symptoms for ≥ 56 days, meeting
315 LC56 definition.³ The median symptom burden in these children was six [IQR 4;8] symptoms
316 reported at least once during the first week, and eight [IQR 6;10] symptoms reported at least
317 once over the entire illness duration. The commonest symptoms experienced by these
318 children over their entire illness were anosmia (84.0%), headache (80.0%), sore throat
319 (80.0%) and fatigue (76.0%).

320

321 Older children were more likely to manifest symptoms ≥ 28 days compared with younger
322 children (59 (5.1%) of 1146 older children vs. 18 (3.1%) of 588 younger children, Chi-
323 squared two-tail test $p=0.046$). This was not significantly different in the smaller number of
324 children with illness duration ≥ 56 days (19 (2.0%) of 934 older children vs. six (1.3%) of 445
325 younger children, Fisher's exact test $p=0.52$).

326

327 ***Symptom Reporting from Additional Questions (added 4 November 2020) and Free*** 328 ***Text Analysis***

329

330 Considering data from questions added to the app on 4 November 2020, the most reported
331 symptom was rhinorrhoea (45.8% younger, 53.5% older children) then sneezing (36.3%
332 younger, 36.6% older children) (Supplementary Figure 1), with similar prevalence in children
333 with LC28 (51.4% rhinorrhoea, 48.9% sneezing) considered over their entire illness.

334

335 ***Potential neurological symptoms***

336

337 As mentioned, headache and fatigue were the commonest symptoms in children testing
338 positive for SARS-CoV-2, overall and in each age group (Figure 2). Dizziness
339 (undifferentiated between light-headedness and vertigo) was reported in 84 (14.3%) younger
340 and 300 (26.2%) older children (median duration two [IQR 1;4] and two [IQR 1;5] days
341 respectively). Symptoms of confusion (encompassing confusion, disorientation, and
342 drowsiness) were reported in 15 (2.6%) younger and 81 (7.1%) older children (median
343 duration two [IQR 1;2] and one [IQR 1;3] day(s) respectively). No formal statistical
344 comparisons of these symptoms in children with shorter or longer illness duration were
345 made, given low prevalence of these symptoms in children with LC28 (Figure 4).

346

347 Considering questions added on 4 November 2020 (Supplementary Table 2), with smaller
348 sample size due to shorter timeframe, 'brain fog' was reported for 44 (8.7%) of 507 younger
349 and 188 (20.2%) of 932 older children (median duration one day [IQR 1;4] and two days
350 [IQR 1;5] respectively). Low mood was reported for 40 (8.0%) younger and 145 (15.6%)
351 older children (median duration two [IQR 1;3.5] and two [IQR 1;4] days, respectively)
352 (Supplementary Figure 1).

353

354 Free-text searching for specific neurologic symptoms disclosed very few reports of
355 weakness (two children) or tics (one child). No severe neurological manifestations (paralysis,
356 ataxia, epileptic seizures, fits, convulsions, paroxysms) were reported (Supplementary Table
357 3). Irritability (three children), emotional difficulties (two children), and behavioural difficulties
358 (one child) were reported rarely; impaired attention and concentration were not reported.

359

360 ***Illness in symptomatic children who tested negative for SARS-CoV-2.***

361

362 15,597 symptomatic children (8,761 younger, 6,836 older children) tested for SARS-CoV-2
363 but with a negative result, were proxy-reported at least once weekly within the requisite time
364 frame and with calculable illness duration. Demographic details of the randomly selected
365 matched control cohort of 1,734 children are shown in Table 1. Median illness duration in

366 these children was three [IQR 2;7] days (younger children three [IQR 2;7] days; older
367 children four [IQR 2;7] days), significantly shorter than for children testing positive for SARS-
368 CoV-2 (Wilcoxon signed rank test $p < 1.e-5$). The individual symptom duration is shown in
369 Supplementary Figure 3 and prevalence in Supplementary Table 4. The most frequently
370 reported symptoms over their entire illness were in younger children: sore throat (46.6%),
371 headache (38.8%), fever (30.4%), fatigue (26.9%), and abdominal pain (24.7%); and in older
372 children: sore throat (60.6%), headache (48.8%), fatigue (37.2%), fever (20.4%) and
373 persistent cough (20.6%).

374

375 ***Long illness duration in children who tested negative for SARS-CoV-2.***

376

377 Few children with a negative SARS-CoV-2 test had illness duration ≥ 28 days (15 of 1,734
378 children; 0.9%; 95% CI [0.5-1.4]), which was lower than for children testing positive
379 considered overall (Chi-squared 2-tail test, $p < 1.e-10$) and by age group (younger children:
380 three (0.5%) vs. 18 (3.1%); Fisher's exact test: $p = 0.001$; older children, 12 (1.1%) vs. 59
381 (5.1%); Fisher's exact test: $p = 0.001$ and $p < 1.e-8$). Symptom profile of these children over
382 their first 28 days of illness is shown in Supplementary Figure 4. However, older children
383 testing negative for SARS-CoV-2 with illness duration ≥ 28 days had a greater symptom
384 burden than was experienced by children with LC28, both at ≥ 28 days (Supplementary
385 Figure 5) and over their entire illness duration (Supplementary Figure 6) ($p = 0.005$ and
386 $p = 0.025$ respectively, Mann-Whitney-U tests).

387

388 ***Proxy-reporting density***

389

390 Overall, proxy-reporting was assiduous for all children. Proxy-reporting density (number of
391 logging episodes/illness duration in days) was significantly higher in children with a negative
392 test for SARS-CoV-2, compared to children with a positive test (younger children: 1 [IQR
393 0.68;1] vs. 0.89 [IQR 0.6;1]; older children 1 [IQR 0.67;1] vs. 0.8 [IQR 0.57;1]), noting the
394 shorter illness duration in children with a negative test.

395

396 ***Proxy-reporting perseverance***

397

398 Proxy-reporting until healthy was higher in children testing negative compared with children
399 testing positive (1,674 of 1,734 [96.5%] vs. 1,551 of 1,734, [89.4%], Chi-squared 2-tail test
400 $p < 1.e-15$). Amongst all 1,734 children testing positive, logging ceased in 183 children prior to
401 a healthy report (22 children with illness duration ≥ 28 days, 161 < 28 days). In children with
402 illness duration ≥ 28 days, proxy-reporting continued until a healthy report in 71.4% [55/77].

403 However, the remaining 22 children had already had symptoms for ≥ 28 days and thus fulfil
404 the definition of LC28. In children with illness duration < 28 days, a healthy report was
405 received for 90.3% [1496/1657]. For the remaining 161 children, median symptom burden at
406 last report was two [IQR 1;3]; and proxy-reporting usually ceased early in illness (logging
407 cessation rates: 11.3% of children with illness duration < 10 days; 5.5% ≥ 10 days). Thus, for
408 children for whom proxy-reporting ceased prior to a healthy report, we have assumed that
409 cessation corresponded to illness resolution (i.e., that proxy-reporting stopped because the
410 child had recovered) and illness duration calculated accordingly.

411
412 We considered the impact of this assumption. Excluding all children testing positive but for
413 whom a healthy report was not logged, median illness duration in the remaining 1,551 was
414 unchanged (6 days [IQR 3;11]) and LC28 prevalence was 3.5% [55/1551], within the
415 confidence intervals [3.5-5.5] for LC28 using data from the entire cohort. Excluding only the
416 161 children with [assumed] short symptoms but including all children with LC28 (regardless
417 of receipt of healthy report), LC28 prevalence was 4.9% (77/1,573 children), again within the
418 confidence intervals.

419
420 In children with a negative SARS-CoV-2 test, logging ceased in 60 children prior to a healthy
421 report (four of 15 children with long illness duration, 56 of 1,719 children with [assumed]
422 short illness duration).

423
424 As there was no data linkage between proxy-reported individual(s) and contributor, we
425 cannot comment whether concurrent illness of family members affected proxy-reporting
426 density or perseverance.

427 **Discussion**

428 In this large study of UK school-aged children, we have shown that symptomatic SARS-CoV-
429 2 infection in children is usually of short duration, with median illness duration of six days
430 (compared to eleven days in adults³) and with low symptom burden. Prolonged illness
431 duration can occur but is infrequent (4.4% ≥ 28 days; 1.8% ≥ 56 days), lower than observed in
432 adults using the same disease definitions (in adults: prevalence of LC28, 13.3% and LC56,
433 4.5%).³ Age correlated with illness duration (overall, and in children with illness duration ≥ 28
434 days), consistent with our previous findings in adults.³

435
436 Similar to adults,³ the commonest symptoms in children with COVID-19 were headache
437 (62.2%) and fatigue (55.0%) (Table 2, Figure 2). A meta-analysis of studies including both

438 community-based and hospitalized children with COVID-19 identified fever (47%) and cough
439 (42%) as the commonest symptoms; however, headache and fatigue were only assessed in
440 half the contributing cohorts.⁴ In our cohort, fever was reported for 37.7% and persistent
441 cough in 25.5%. Anosmia (including anosmia and dysosmia) was common (39.6% overall),
442 and higher than observed in a small study of adolescents aged 10-19 years with 'mild to
443 moderate' COVID-19 (here, anosmia: 24.1%),¹⁷ noting that anosmia was one of the core
444 symptoms determining access to testing in the UK during our study period.

445

446 In children with illness duration ≥ 28 days, by day 28 symptom burden was low (median, two).
447 Fatigue was proxy-reported at some stage in almost all (84.4%) of these children (Figure 4,
448 Supplementary Figure 6). Fatigue has been reported as the commonest symptom of long
449 COVID in many adult studies, although prevalence varies. In our own adult study, fatigue
450 was almost universal in LC28 (97.7% at some stage during their illness);³ other adult studies
451 have reported persistence of fatigue as 53.1% at 60 days;¹⁸ and 52.3% at 10 weeks.¹⁹

452

453 Few large-scale epidemiological studies have been undertaken to provide normative data of
454 prevalence and persistence of headache and fatigue in the general paediatric population.
455 Regarding headache, a systematic review of 38 unselected population-based studies in
456 individuals aged < 20 years reported ~60% were "prone to headache".²⁰ A random sample of
457 2,165 school children aged 5-15 years reported 1,166 (66%) had headaches over the
458 previous year.²¹ Regarding fatigue, a study of 2,936 children found 129 (4.4%) had "more
459 than a few days of disabling fatigue".²² Prevalence of chronic fatigue syndrome ("disabling
460 fatigue lasting > 3 months...where no other cause for the fatigue could be established") was
461 1% of children aged 11-16 years in a study from three English secondary schools;²³ and
462 prevalence of "chronic disabling fatigue" ("fatigue lasting > 6 months associated with absence
463 from full-time school or that had prevented...[participation] in activities") in the Avon
464 Longitudinal Study was 1.5% and 2.2% in children aged 13 and 16 years respectively.²⁴
465 Considering fatigue after viral infection, median illness duration after Epstein-Barr virus in
466 symptomatic university students was ten days (mean 17, range 3-66 days), with fatigue
467 persisting for a median of 15.5 days.²⁵ These studies indicate the wide range of prevalence
468 of these symptoms in paediatric populations generally.

469

470 Lack of contemporaneous data comparing illness duration and symptom profiles after
471 infection with different viruses also complicates contextualisation of COVID-19 in children. A
472 preprint paper comparing data from 55,270 children/adolescents with COVID-19 (3,693 of
473 whom were hospitalized) with a non-contemporaneous cohort of 1,952,693 children with
474 influenza during 2017-19 (hospitalised numbers unclear) suggested that dyspnoea, anosmia,

475 and gastrointestinal tract symptoms were more common in children with COVID-19 than in
476 children with influenza.²⁶ However, symptoms and overall illness duration were only reported
477 as present or absent at 30 days in both groups, preventing more granular comparisons.

478

479 A strength of our study is our comparison of contemporaneous illness profiles of
480 symptomatic children testing positive vs. negative for SARS-CoV-2, matched for age,
481 gender, and week of testing. Children testing positive had longer median illness duration (six
482 days vs. three days in children testing negative); and were more likely to have illness
483 duration ≥ 28 days (4.4% vs. 0.9%). However, some children testing negative also had illness
484 duration ≥ 28 days, and these children had a higher symptom count both over their entire
485 illness duration and at day 28, acknowledging here that our sample size is small. We
486 considered whether some of these children might have false negative results. However,
487 there is no evidence that sensitivity and specificity of SARS-CoV-2 testing differ in children
488 compared with adults, noting sensitivity for PCR SARS-CoV-2 testing of $\sim 95\%$.²⁷ The
489 symptom profiles of these children (Supplementary Data) suggest some differences
490 compared with children testing positive, though this could not be assessed statistically.
491 Relevantly, prevalence of non-SARS-CoV-2 respiratory viruses (influenza A, influenza B,
492 parainfluenza, adenovirus, rhinovirus, and respiratory syncytial virus) were unusually low
493 over the 2020-21 UK winter,^{14,28,29} with the exception of the rhinovirus peak commonly
494 observed in September with return-to-school.¹⁴ With relaxation of personal protection and
495 social distancing, these illnesses are likely to return towards more usual (i.e., higher)
496 incidences in future UK winters. Our data highlight that other illnesses may also have a
497 protracted and burdensome course in children: this needs to be considered in post-
498 pandemic service delivery planning.

499

500 Short and long-term effects of COVID-19 on school performance and learning have been a
501 matter of concern.³⁰ In our cohort, neither attentional problems nor memory complaints nor
502 anxiety were reported. Isolated cases of low mood and irritability were consistent with
503 previously reported figures in the school-aged healthy population.³¹ Our data do not support
504 anecdotal reports of weakness and seizures as common features in children with COVID-19,
505 whether of short or long illness duration; and no severe neurological symptoms were
506 reported. However, symptom persistence from any illness can cause low mood, with adverse
507 long-term outcomes including school refusal and separation anxiety.³² Although self-
508 reporting adults could participate in specific questions regarding mental health, these data
509 could not be proxy-reported; this limits our ability to assess mental health comprehensively
510 in children during the pandemic, whether testing positive or negative for SARS-CoV-2.

511

512 In considering our data relative to other sources, the UK Office for National Statistics (ONS)
513 conducted a round of SARS-CoV-2 testing (irrespective of symptoms) from 2-10 December
514 2020 (i.e., prior to the UK peak), in 7,089 pupils drawn from 121 schools (41 primary, 80
515 secondary); positive tests were reported in 0.94% of primary school pupils and 0.99% of
516 staff, and in secondary schools 1.22% of pupils and 1.64% of staff. However, the ONS
517 warned that their conclusions might not have general validity, as there was deliberate
518 oversampling of schools that had higher infection rates early after return-to-school.³³
519 Moreover, these figures do not capture fluctuations as the pandemic progressed. In our
520 dataset integrating data across the pandemic, 6,975 (2.7%) of 258,790 of proxy-reported
521 children had a positive test (2.3% of younger, 3.7% of older children), noting that: a) testing
522 was only available for symptomatic individuals, and rarely during the first wave; and b)
523 proxy-reporting was voluntary and through a COVID-19 study app, with its (adult) user base
524 over-representative of females, white background, and above-average socioeconomic status
525 compared with the general UK population.¹² Further, we cannot characterise regional
526 variability, as geographic information was unavailable for many participants.

527
528 We considered the proportion of all UK school-aged children testing positive for SARS-CoV-
529 2 proxy-reported in our study. Different UK countries report data for children within different
530 time periods and different age groups (e.g., often including young adults aged 18-19 years
531 and preschool-aged children) (Supplementary Table 5). Conservatively, our study represents
532 ~1-2% of UK school-aged children testing positive during the pandemic.

533
534 The most recent ONS data (released April 2021) estimated 9.8% of children aged 2-11 years
535 and 13.0% of children aged 12-16 years experiencing ongoing symptoms five weeks after a
536 positive SARS-CoV-2 testing, with 7.4% and 8.2% respectively still reporting symptoms at 12
537 weeks.³⁴ These figures were a reduction compared with previous ONS estimates in January
538 2021 (e.g., from 12.9% to 9.8% in children aged 2-11 years).^{34,35} The ONS has reported a
539 control group (defined as never symptomatic, never tested, never self-isolated, and never a
540 contact of anyone testing positive), with 'baseline' symptom rates (not otherwise parsed) of
541 2% in children aged 2-11 years and 1.7% in children aged 12-16 years.^{34,35} There is limited
542 published detail of ONS methodology.

543
544 Part of the disparity between our LC28 prevalence in children and the ONS figures may be
545 that the ONS required two consecutive asymptomatic visits to define illness end: thus,
546 children with asymptomatic periods >1 week between symptoms would be captured by ONS
547 but not by our study. Notably, the ONS' sensitivity analysis of the impact of defining illness
548 end to a single asymptomatic visit markedly lowered their prevalence estimates, especially

549 for illness >12 weeks (from 13.7% to 0.9%³⁴), more consistent with our results. Additionally,
550 ONS estimates use current and recalled data collected in the first week of each month,
551 whereas our app-based data were collected in real time with high proxy-reporting density
552 and persistence. Our data concurs with a small Australian study reporting 171 young
553 children testing positive for SARS-CoV-2 (median age three years [IQR 1;8]), 151 of whom
554 were followed for 3-6 months: twelve (8%) children (median age, two years) had symptoms
555 3-8 weeks after initial presentation (most commonly, cough and/or fatigue); all returned to
556 baseline health by study end.³⁶

557
558 Our study is part of one of the largest citizen-scientist initiatives ever in the UK. We
559 leveraged our previously published methodologies assessing illness duration and symptom
560 profiling, including long COVID assessment.³ Our data census points allowed us to capture
561 all children with illness duration ≥ 8 weeks who presented before the UK peak positive
562 specimen date, and by ensuring symptom presentation concurred with test timing we could
563 attribute symptoms to illness defined by contemporaneous test results. We avoided bias
564 from limited test availability early in the pandemic by restricting analyses to start from 1
565 September 2020. We acknowledge there were still some blocks to testing access³⁷ –
566 specifically, individuals were required to have fever, cough, or anosmia which symptom list
567 was largely informed by adult symptomatology and might not capture some common
568 paediatric manifestations of COVID-19 (e.g., abdominal pain, reported in 4% of paediatric
569 cases⁴ and in 27.8% of our younger children). Similarly, direct questions asked through the
570 app were largely informed by research in adults. The free-text entries did not suggest
571 common symptoms unique to paediatric populations; however, we did not undertake a
572 formal qualitative analysis of free-text data given (a) its *ad hoc* collection and (b) the
573 potential bias arising from introduction of additional direct questions from 4 November 2020
574 (i.e., once a symptom was directly asked, it was unlikely to be reported as free-text). We also
575 acknowledge that symptoms were proxy-reported rather than directly ascertained; however,
576 this is common in clinical assessment of children, particularly younger children.

577 **Conclusions**

578 Our national study provides the first systematic description of COVID-19 in symptomatic
579 school-aged children tested for SARS-CoV-2. Our data show that long illness duration after
580 COVID-19 is uncommon; however, a small proportion of children do have prolonged illness
581 duration and persistent symptoms, validating these children's experiences. Our LC56 data
582 provide reassurance regarding longer outcome for these children. The symptom burden in
583 children testing negative for SARS-CoV-2 but with long illness duration highlights that

584 allocation of appropriate resources will be necessary for any child with prolonged illness,
585 whether from SARS-CoV-2 infection or not. Our study provides timely and critical data to
586 inform discussions around the impact and implications of the pandemic on UK paediatric
587 healthcare resource allocation.

588 **Data sharing**

589 Data collected in the COVID Symptom Study smartphone application are being shared with
590 other health researchers through the UK National Health Service-funded Health Data
591 Research UK (HDRUK) and Secure Anonymised Information Linkage consortium, housed in
592 the UK Secure Research Platform (Swansea, UK). Anonymised data are available to be
593 shared with researchers according to their protocols in the public interest
594 (<https://web.www.healthdatagateway.org/dataset/fddcb382-3051-4394-8436-b92295f14259>).

595
596

597 References

598

599

- 600 1 World Health Organization (WHO). WHO Coronavirus (COVID-19) Dashboard.
601 <https://covid19.who.int>. 2021; published online May 10.
- 602 2 Xie Y, Wang Z, Liao H, Marley G, Wu D, Tang W. Epidemiologic, clinical, and
603 laboratory findings of the COVID-19 in the current pandemic: Systematic review and
604 meta-analysis. *BMC Infectious Diseases*. 2020; **20**. DOI:10.1186/s12879-020-05371-
605 2.
- 606 3 Sudre C, Murray B, Varsavsky T, *et al*. Attributes and predictors of long COVID.
607 *Nature Medicine* 2021; **Mar 10**. DOI:10.1038/s41591-021-01292-y.
- 608 4 Li B, Zhang S, Zhang R, Chen X, Wang Y, Zhu C. Epidemiological and Clinical
609 Characteristics of COVID-19 in Children: A Systematic Review and Meta-Analysis.
610 *Frontiers in Pediatrics*. 2020; **8**. DOI:10.3389/fped.2020.591132.
- 611 5 Ma N, Li P, Wang X, *et al*. Ocular Manifestations and Clinical Characteristics of
612 Children with Laboratory-Confirmed COVID-19 in Wuhan, China. *JAMA*
613 *Ophthalmology* 2020; **138**. DOI:10.1001/jamaophthalmol.2020.3690.
- 614 6 National Health Service (NHS). COVID-19 Hospital Activity. 2021.
615 <https://www.england.nhs.uk/statistics/statistical-work-areas/covid-19-hospital-activity/>.
- 616 7 Bhopal SS, Bagaria J, Olabi B, Bhopal R. Children and young people remain at low
617 risk of COVID-19 mortality. *Lancet Child Adolesc Health* 2021; **Mar 11**: S2352-
618 4642(21)00066-3. [https://doi.org/10.1016/S2352-4642\(21\)00066-3](https://doi.org/10.1016/S2352-4642(21)00066-3)
- 619 8 Godfred-Cato S, Bryant B, Leung J, *et al*. COVID-19-Associated Multisystem
620 Inflammatory Syndrome in Children - United States, March-July 2020. *MMWR Morb*
621 *Mortal Wkly Rep*; **69**: 1074–80. <http://dx.doi.org/10.15585/mmwr.mm6932e2>
- 622 9 Nalbandian A, Sehgal K, Gupta A, *et al*. Post-acute COVID-19 syndrome. *Nat Med*
623 2021. DOI:10.1038/s41591-021-01283-z.
- 624 10 National Institute for Health and Care Excellence (NICE). COVID-19 rapid guideline:
625 managing the long- term effects of COVID-19 (NG188). Evidence reviews 2 and 3:
626 prevalence. 2020. <https://www.nice.org.uk/guidance/ng188> (accessed May 10, 2021).
- 627 11 Menni C, Valdes AM, Freidin MB, *et al*. Real-time tracking of self-reported symptoms
628 to predict potential COVID-19. *Nature Medicine* 2020. DOI:10.1038/s41591-020-0916-
629 2.
- 630 12 Varsavsky T, Graham MS, Canas LS, *et al*. Detecting COVID-19 infection hotspots in
631 England using large-scale self-reported data from a mobile application: a prospective,
632 observational study. *The Lancet Public Health* 2021; **6**. DOI:10.1016/S2468-
633 2667(20)30269-3.
- 634 13 Government of the United Kingdom. Coronavirus (COVID-19) in the UK - Lab-based
635 testing and capacity, by test type. 2021.
636 <https://coronavirus.data.gov.uk/details/testing>.
- 637 14 Public Health England. Weekly national Influenza and COVID-19 surveillance report -
638 Week 11 report (up to week 10 data) 18 March 2021. 2021.
639 [https://assets.publishing.service.gov.uk/government/uploads/system/uploads/attachm](https://assets.publishing.service.gov.uk/government/uploads/system/uploads/attachment_data/file/971212/Weekly_Flu_and_COVID-19_report_w11_v2.pdf)
640 [ent_data/file/971212/Weekly_Flu_and_COVID-19_report_w11_v2.pdf](https://assets.publishing.service.gov.uk/government/uploads/system/uploads/attachment_data/file/971212/Weekly_Flu_and_COVID-19_report_w11_v2.pdf) (accessed April
641 27, 2021).
- 642 15 Government of the United Kingdom. GOV.UK Coronavirus (COVID-19) in the UK -
643 Cases by specimen date. 2021. <https://coronavirus.data.gov.uk/details/cases>

- 644 16 Struyf T, Deeks JJ, Dinnes J, *et al.* Signs and symptoms to determine if a patient
645 presenting in primary care or hospital outpatient settings has COVID-19. *Cochrane*
646 *Database of Systematic Reviews*. 2021; **2021**.
647 DOI:10.1002/14651858.CD013665.pub2.
- 648 17 Kumar L, Kahlon N, Jain A, Kaur J, Singh M, Pandey AK. Loss of smell and taste in
649 COVID-19 infection in adolescents. *International Journal of Pediatric*
650 *Otorhinolaryngology* 2021; **142**. DOI:10.1016/j.ijporl.2021.110626.
- 651 18 Carfi A, Bernabei R, Landi F. Persistent symptoms in patients after acute COVID-19.
652 *JAMA - Journal of the American Medical Association*. 2020; **324**.
653 DOI:10.1001/jama.2020.12603.
- 654 19 Townsend L, Dyer AH, Jones K, *et al.* Persistent fatigue following SARS-CoV-2
655 infection is common and independent of severity of initial infection. *PLoS ONE* 2020;
656 **15**. DOI:10.1371/journal.pone.0240784.
- 657 20 Abu-Arafeh I, Razak S, Sivaraman B, Graham C. Prevalence of headache and
658 migraine in children and adolescents: A systematic review of population-based
659 studies. *Developmental Medicine and Child Neurology*. 2010; **52**. DOI:10.1111/j.1469-
660 8749.2010.03793.x.
- 661 21 Abu-Arafeh I, Russell G. Prevalence of headache and migraine in schoolchildren.
662 *BMJ* 1994; **309**. DOI:10.1136/bmj.309.6957.765.
- 663 22 Farmer A, Fowler T, Scourfield J, Thapar A. Prevalence of chronic disabling fatigue in
664 children and adolescents. *British Journal of Psychiatry*. 2004; **184**.
665 DOI:10.1192/bjp.184.6.477.
- 666 23 Crawley EM, Emond AM, Sterne JAC. Unidentified chronic fatigue syndrome/myalgic
667 encephalomyelitis (CFS/ME) is a major cause of school absence: Surveillance
668 outcomes from school-based clinics. *BMJ Open* 2011; **1**. DOI:10.1136/bmjopen-2011-
669 000252.
- 670 24 Norris T, Collin SM, Tilling K, *et al.* Natural course of chronic fatigue
671 syndrome/myalgic encephalomyelitis in adolescents. *Archives of Disease in*
672 *Childhood* 2017; **102**. DOI:10.1136/archdischild-2016-311198.
- 673 25 Balfour HH, Odumade OA, Schmeling DO, *et al.* Behavioral, virologic, and
674 immunologic factors associated with acquisition and severity of primary Epstein-Barr
675 virus infection in university students. *Journal of Infectious Diseases* 2013; **207**.
676 DOI:10.1093/infdis/jis646.
- 677 26 Duarte-Salles T, Vizcaya D, Pistillo A, *et al.* Baseline characteristics, management,
678 and outcomes of 55,270 children and adolescents diagnosed with COVID-19 and
679 1,952,693 with influenza in France, Germany, Spain, South Korea and the United
680 States: An international network cohort study. *medRxiv*. 2020.
681 DOI:10.1101/2020.10.29.20222083.
- 682 27 UK Office for National Statistics (ONS), Steel K, Davies B. 5. Test sensitivity and
683 Specificity. 2021.
684 [https://www.ons.gov.uk/peoplepopulationandcommunity/healthandsocialcare/conditio](https://www.ons.gov.uk/peoplepopulationandcommunity/healthandsocialcare/conditionsanddiseases/methodologies/covid19infectionsurveyypilotmethodsandfurtherinformation#test-sensitivity-and-specificity)
685 [nsanddiseases/methodologies/covid19infectionsurveyypilotmethodsandfurtherinformati](https://www.ons.gov.uk/peoplepopulationandcommunity/healthandsocialcare/conditionsanddiseases/methodologies/covid19infectionsurveyypilotmethodsandfurtherinformation#test-sensitivity-and-specificity)
686 [on#test-sensitivity-and-specificity](https://www.ons.gov.uk/peoplepopulationandcommunity/healthandsocialcare/conditionsanddiseases/methodologies/covid19infectionsurveyypilotmethodsandfurtherinformation#test-sensitivity-and-specificity).
- 687 28 Public Health Scotland. Weekly national seasonal respiratory report - Week ending 28
688 March 2021 – week 12. [https://beta.isdscotland.org/media/8300/week-12-respiratory-](https://beta.isdscotland.org/media/8300/week-12-respiratory-report-full-report-final.pdf)
689 [report-full-report-final.pdf](https://beta.isdscotland.org/media/8300/week-12-respiratory-report-full-report-final.pdf). 2021; published online March 31.

- 690 29 Public Health Wales - National Health Service. Weekly Influenza Activity in Wales
691 Report. <http://www.wales.nhs.uk/sites3/page.cfm?orgid=457&pid=34338>. 2021;
692 published online April 7.
- 693 30 Ludvigsson JF. Case report and systematic review suggest that children may
694 experience similar long-term effects to adults after clinical COVID-19. *Acta*
695 *Paediatrica, International Journal of Paediatrics* 2021; **110**. DOI:10.1111/apa.15673.
- 696 31 UK Office for National Statistics (ONS) ER. Young people's well-being in the UK:
697 2020.
698 [https://www.ons.gov.uk/peoplepopulationandcommunity/wellbeing/bulletins/youngpeo](https://www.ons.gov.uk/peoplepopulationandcommunity/wellbeing/bulletins/youngpeopleswellbeingintheuk/2020)
699 [pleswellbeingintheuk/2020](https://www.ons.gov.uk/peoplepopulationandcommunity/wellbeing/bulletins/youngpeopleswellbeingintheuk/2020). 2020; published online Oct 2.
- 700 32 Hysing M, Elgen I, Gillberg C, Lie SA, Lundervold AJ. Chronic physical illness and
701 mental health in children. Results from a large-scale population study. *Journal of Child*
702 *Psychology and Psychiatry and Allied Disciplines* 2007; **48**. DOI:10.1111/j.1469-
703 7610.2007.01755.x.
- 704 33 UK Office for National Statistics (ONS). COVID-19 Schools Infection Survey Round 2,
705 England: December 2020. 2021.
706 [https://www.ons.gov.uk/peoplepopulationandcommunity/healthandsocialcare/conditio](https://www.ons.gov.uk/peoplepopulationandcommunity/healthandsocialcare/conditionsanddiseases/bulletins/covid19schoolsinfectionsurveyround2england/december2020)
707 [nsanddiseases/bulletins/covid19schoolsinfectionsurveyround2england/december2020](https://www.ons.gov.uk/peoplepopulationandcommunity/healthandsocialcare/conditionsanddiseases/bulletins/covid19schoolsinfectionsurveyround2england/december2020)
708 .
- 709 34 UK Office for National Statistics (ONS). All data related to Prevalence of ongoing
710 symptoms following coronavirus (COVID-19) infection in the UK: 1 April 2021.
711 [https://www.ons.gov.uk/peoplepopulationandcommunity/healthandsocialcare/conditio](https://www.ons.gov.uk/peoplepopulationandcommunity/healthandsocialcare/conditionsanddiseases/bulletins/prevalenceofongoingsymptomsfollowingcoronaviruscovid19infectionintheuk/1april2021/relateddata)
712 [nsanddiseases/bulletins/prevalenceofongoingsymptomsfollowingcoronaviruscovid19in](https://www.ons.gov.uk/peoplepopulationandcommunity/healthandsocialcare/conditionsanddiseases/bulletins/prevalenceofongoingsymptomsfollowingcoronaviruscovid19infectionintheuk/1april2021/relateddata)
713 [fectionintheuk/1april2021/relateddata](https://www.ons.gov.uk/peoplepopulationandcommunity/healthandsocialcare/conditionsanddiseases/bulletins/prevalenceofongoingsymptomsfollowingcoronaviruscovid19infectionintheuk/1april2021/relateddata). 2021; published online April 1.
- 714 35 UK Office for National Statistics (ONS). Updated estimates of the prevalence of long
715 COVID symptoms.
716 [https://www.ons.gov.uk/peoplepopulationandcommunity/healthandsocialcare/healthan](https://www.ons.gov.uk/peoplepopulationandcommunity/healthandsocialcare/healthandlifeexpectancies/adhocs/12788updatedestimatesoftheprevalenceoflongcovid19symptoms)
717 [dlifeexpectancies/adhocs/12788updatedestimatesoftheprevalenceoflongcovid19sympto](https://www.ons.gov.uk/peoplepopulationandcommunity/healthandsocialcare/healthandlifeexpectancies/adhocs/12788updatedestimatesoftheprevalenceoflongcovid19symptoms)
718 [ms](https://www.ons.gov.uk/peoplepopulationandcommunity/healthandsocialcare/healthandlifeexpectancies/adhocs/12788updatedestimatesoftheprevalenceoflongcovid19symptoms). 2021; published online Jan 21.
- 719 36 Say D, Crawford N, McNab S, Wurzel D, Steer A, Tosif S. Post-acute COVID-19
720 outcomes in children with mild and asymptomatic disease. *The Lancet Child &*
721 *Adolescent Health* 2021; published online April. DOI:10.1016/S2352-4642(21)00124-
722 3.
- 723 37 Graham MS, May A, Varsavsky T, *et al*. Knowledge barriers in the symptomatic-
724 COVID-19 testing programme in the UK: an observational study. *medRxiv* 2021.

725

Table 1. Characteristics of school-aged children who tested positive for SARS-CoV-2, and the control cohort of children (matched 1:1 for age, gender, and week of testing) who tested negative for SARS-CoV-2. The cohort of children with positive SARS-CoV-2 testing is presented here both as younger and older groups; and for usual (i.e., short) vs. extended illness duration.

	Children with positive SARS-CoV-2 test					Children with negative SARS-CoV-2 test (matched cohort)
	Younger group	Older group	Symptom duration <10 days	Symptom duration ≥ 28 days	Full cohort	
Number	588	1,146	1,183	77	1,734	1,734
Males (%)	287 (48.9)	577 (50.3)	618 (52.2)	35 (45.5)	864 (49.8)	865 (49.9)
Age, years (median, [IQR])	9 [7;10]	15 [13;16]	13 [10;15]	14 [12;16]	13 [10;15]	13 [10;15]
BMI (kg/m²) (median, [IQR])	17.0 [15.1;19.7]	20.1 [17.8;22.3]	19.0 [16.5;21.8]	18.6 [16.3;21.8]	19.2 [16.6;21.8]	19.0 [16.5;21.5]
Asthma (%)	69 (11.7)	147 (12.8)	134 (11.7)	10 (13.0)	216 (12.8)	229 (13.2)
Visit to hospital (%)	16 (2.7)	21 (1.8)	20 (1.7)	1 (1.3)	37 (2.1)	26 (1.5)

Illness duration (median, [IQR])	5 [2;9]	7 [3;12]	4 [2;6]	46 [32;58]	6 [3;11]	3 [2;7]
Number of symptoms in the first week (median, [IQR])	3 [2;5]	4 [2;6]	3 [2;5]	6 [4;8]	3 [2;6]	2 [1;4]

BMI: Body Mass Index. IQR: Inter Quartile Range.

Table 2. Symptoms over the duration of illness in children testing positive for SARS-CoV-2.

	Sample tested positive for SARS-CoV-2		
	Younger children (aged 5-11 years, n=588)	Older children (aged 12-17 years, n=1,146)	Overall cohort (n=1,734)
Headache	324	755	1,079 (62.2%)
Fatigue	258	696	954 (55.0%)
Sore Throat	213	585	798 (46.0%)
Anosmia	132	554	686 (39.6%)
Fever	257	396	653 (37.7%)
Abdominal Pain	163	194	357 (20.6%)
Dizziness	84	300	384 (22.1%)
Persistent Cough	145	298	443 (25.5%)
Loss of Appetite	120	254	374 (21.6%)
Eye Soreness	89	248	337 (19.4%)
Myalgias	54	231	285 (16.4%)
Nausea	95	193	288 (16.6%)
Hoarse voice	63	166	229 (13.2%)
Chest Pain	37	143	180 (10.4%)
Dyspnoea	24	143	167 (9.6%)
Diarrhoea	48	79	127 (7.3%)
Confusion	15	81	96 (5.5%)
Red Welts	16	36	52 (3.0%)
Blisters	4	22	26 (1.5%)

Figure 1. Flowchart of Inclusion and Exclusion Criteria for the Study.

Legend: overall number for the entire cohort of children is given first; numbers within brackets separated by oblique refer to younger children and older children in that order. 'Not valid result' – PCR test result proxy-reported as "failed test" or "still waiting". 'Duration calculable' – illness onset within defined timeframe of testing for SARS-CoV-2, and with defined endpoint (for details, please see Methods). 'Irregular logging' – proxy-reporting with intervals of >7 days between proxy-reports during illness duration). 'Illness onset outside of study bounds' - symptom onset before 1 September 2020 or after 24 January 2021. 'Hosp' – presenting to hospital (either admitted to hospital or seen in Emergency Department).

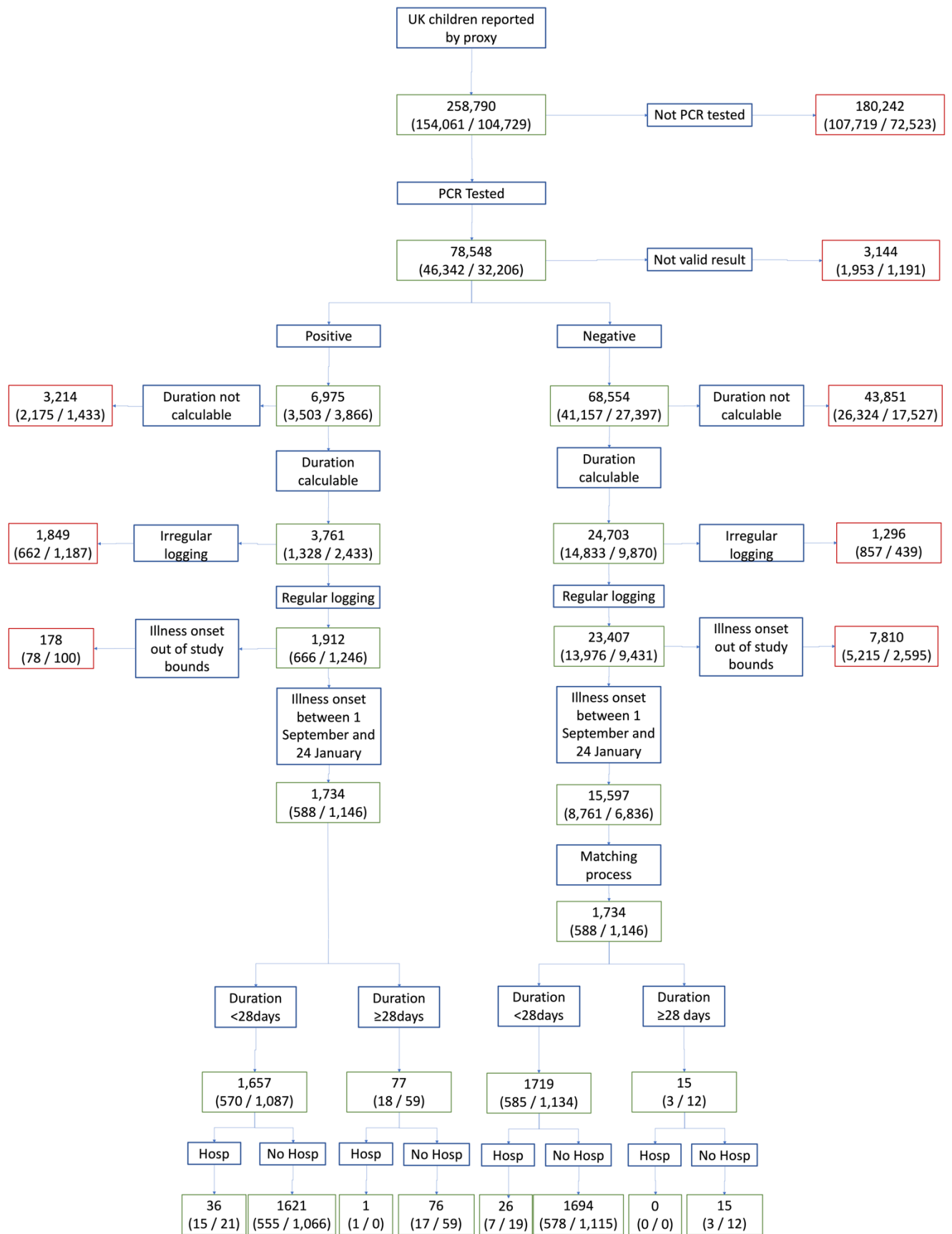


Figure 2. Prevalence of symptoms reported over the course of illness in younger (5-11 years, n=588) and older (12-17 years, n=1,146) children testing positive for SARS-CoV-2.

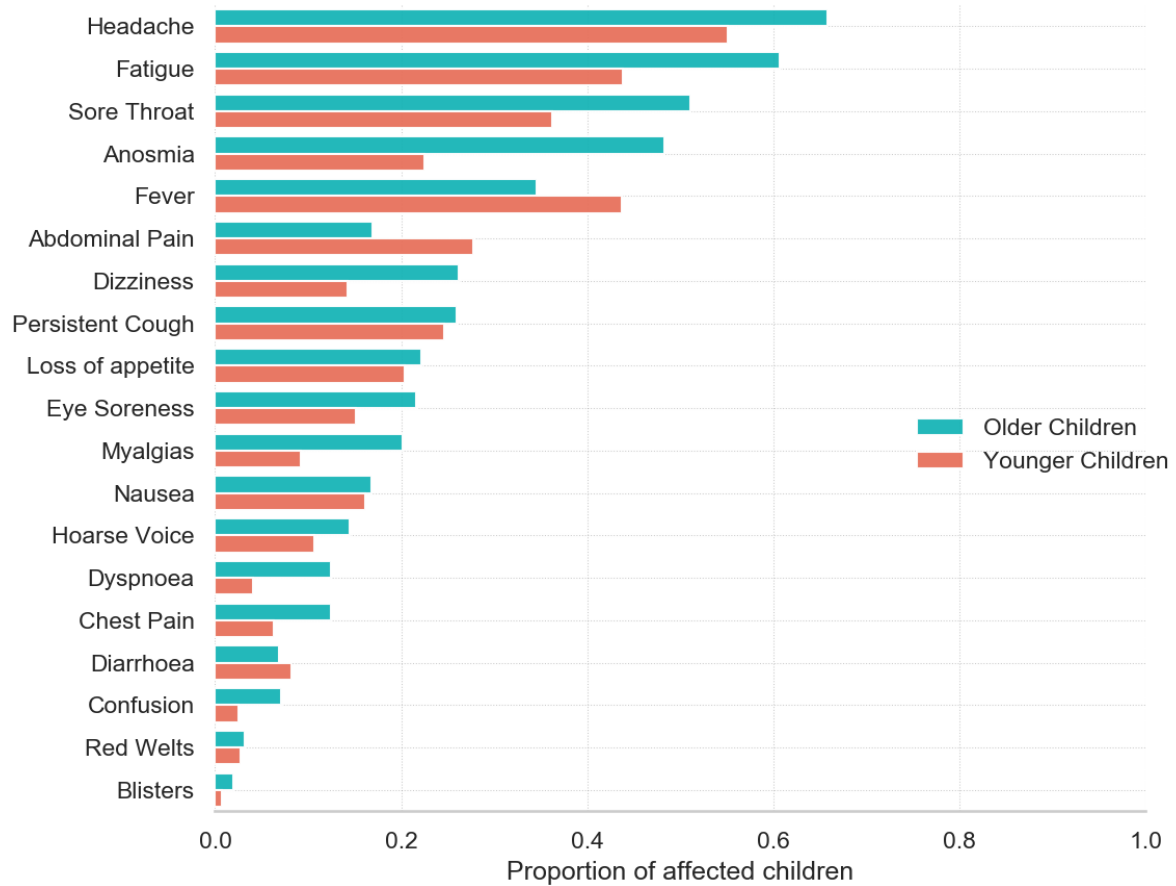


Figure 3. Median duration of each symptom [IQR] in younger (5-11 years) and older (12-17 years) children.

