

1 Modelling outbreak response strategies for
2 preventing spread of emergent *Neisseria*
3 *gonorrhoeae* strains in men who have sex
4 with men in Australia

5 Qibin Duan^{1,2}, Chris Carmody^{4,5}, Basil Donovan^{2,6}, Rebecca J Guy², Ben B Hui²,
6 John M Kaldor², Monica M Lahra^{7,8}, Matthew G Law², David A Lewis^{9,10,11}, Michael
7 Maley^{12,13}, Skye McGregor², Anna McNulty^{6,3}, Christine Selvey¹⁴, David J
8 Templeton^{2,15}, David M Whiley¹⁶, David G Regan^{2*}, James G Wood^{3*}.

9 ¹ School of Mathematical Sciences, Queensland University of Technology, Brisbane, QLD
10 4001, Australia; ² The Kirby Institute, UNSW Sydney, Sydney, NSW 2052, Australia; ³
11 School of Population Health, UNSW Sydney, Sydney, NSW 2052, Australia; ⁴ Liverpool
12 Sexual Health Clinic, Liverpool, NSW 2170, Australia; ⁵ Western Sydney University,
13 Penrith, NSW 2751, Australia; ⁶ Sydney Sexual Health Centre, Sydney Sexual Health
14 Centre, South Eastern Sydney Local Health District, Sydney, New South Wales, Australia; ⁷
15 Microbiology Department, New South Wales Health Pathology, The Prince of Wales
16 Hospital, Randwick, NSW, Australia; ⁸ School of Medical Sciences, UNSW Sydney,
17 Australia; ⁹ Western Sydney Sexual Health Centre, Western Sydney Local Health District,
18 Parramatta, NSW 2150, Australia; ¹⁰ Westmead Clinical School, Faculty of Health and
19 Medicine & Marie Bashir Institute for Infectious Diseases and Biosecurity, University of
20 Sydney, Westmead, NSW 2145, Australia; ¹¹ Division of Medical Virology, Department of
21 Pathology, Faculty of Health Sciences, University of Cape Town, Cape Town, South Africa;

22 ¹²Department of Microbiology and Infectious Diseases, Liverpool Hospital, Liverpool, New
23 South Wales, Australia; ¹³South Western Clinical School, UNSW Sydney, Sydney, NSW
24 2052, Australia; ¹⁴Communicable Diseases Branch, Health Protection NSW, Australia; ¹⁵
25 Department of Sexual Health Medicine, Sydney Local Health District and Discipline of
26 Medicine, Central Clinical School, Faculty of Medicine and Health, The University of
27 Sydney, Sydney, NSW, Australia; ¹⁶Centre for Clinical Research, University of Queensland,
28 Brisbane, QLD, Australia

29 *Corresponding authors:

30 James G Wood, School of Population Health, UNSW Sydney, Sydney, NSW 2052, Australia.

31 Email: james.wood@unsw.edu.au

32 David G Regan, The Kirby Institute, UNSW Sydney, Sydney, NSW 2052, Australia. Email:

33 dregan@kirby.unsw.edu.au

34

35

36 Abstract

37 The ability to treat gonorrhoea with current first-line drugs is threatened by the global
38 spread of extensively drug resistant (XDR) *Neisseria gonorrhoeae* (NG) strains. In Australia,
39 urban transmission is high among men who have sex with men (MSM) and emergence of an
40 imported XDR NG strain in this population could result in an epidemic that would be difficult
41 and costly to control. An individual-based, anatomical site-specific mathematical model of
42 NG transmission among Australian MSM was developed and used to evaluate the potential
43 for elimination of an emergent XDR NG strain under a range of case-based and population-
44 based test-and-treat strategies. When applied upon detection of the imported strain, these
45 strategies enhanced the probability of elimination and reduced the outbreak size compared
46 with current practice. The most effective strategies combined testing targeted at regular
47 and casual partners with increased rates of population testing. However, even with the
48 most effective strategies, outbreaks could persist for up to 2 years post-detection. Our
49 simulations suggest that local elimination of emergent NG XDR strains can be achieved with
50 high probability using combined case-based and population-based test-and-treat strategies.
51 These strategies may be an effective means of preserving current treatments in the event of
52 wider XDR NG emergence.

53

54 Key words

55 Gonorrhoea, mathematical model, antimicrobial resistance, men who have sex with men,
56 outbreak control, surveillance, contact tracing, anatomical site-specific model

57

58 Author Summary

59 In most high-income settings, gonorrhoea transmission is endemic among men who have
60 sex with men (MSM). While gonorrhoea remains readily treatable, there are major concerns
61 about further resistance due to recent reports of treatment failure with first-line therapy
62 and limited remaining treatment options. Here we investigated the potential for trace and
63 treat response strategies to eliminate such strains before their prevalence reaches a level
64 requiring a shift to new first line therapies. Rather than directly consider resistance, we
65 explore the mitigating effect of various test and trace measures on outbreaks of a generic
66 imported strain which remains treatable. This is done within a realistic mathematical model
67 of spread in an MSM community that captures cases, anatomical sites of infection and
68 contacts at an individual level, calibrated to Australian epidemiology. The results indicate
69 that strategies such as partner tracing and treatment in combination with elevated
70 asymptomatic community testing are highly effective in mitigating outbreaks but can take
71 up to 2 years to achieve elimination. As there are currently no clear alternatives of proven
72 efficacy and safety to replace ceftriaxone in first-line therapy, these promising results
73 suggest potential for use of these outbreak response strategies to enable continuation of
74 current treatment recommendations.

75

76 Introduction

77 Gonorrhoea is a sexually transmissible infection caused by the bacterium *Neisseria*
78 *gonorrhoeae* (NG). Antibiotics have, for many decades, provided effective treatment for
79 gonorrhoea. However, resistance to several classes of antimicrobial agents has emerged,
80 rendering many previously effective drugs ineffective (1). Ceftriaxone is now recommended
81 in most countries as the backbone of first line therapy for gonorrhoea. Since 2009, reports
82 of NG strains exhibiting resistance to ceftriaxone have generated substantial concern in
83 national and global public health agencies (2, 3). These reports were initially sporadic but by
84 2017 evidence emerged of sustained spread of ceftriaxone-resistant strains harbouring a
85 novel resistance mechanism in the form of a *penA* type 60.001 allele (4). Since then, a
86 further extensively drug resistant (XDR) strain harbouring the *penA* 60.001 allele as well as
87 high-level resistance to azithromycin has been reported in Australia, the UK and continental
88 Europe (5-8). With the possible exception of spectinomycin and gentamicin (9), there are no
89 alternative drugs of proven safety and efficacy currently available for routine treatment of
90 anogenital gonorrhoea. Novel antimicrobials are being trialled but are yet to be
91 comprehensively assessed (10, 11).

92 Without effective treatment and/or surveillance, there is the potential for rapid spread of
93 resistance within populations as highlighted in South Australia in 2016, where azithromycin
94 resistance rose from 5% to 30% of isolates within just 12 weeks, before dropping back to
95 12% in 2017 (12). Rapid rises in ciprofloxacin resistance in New South Wales, Australia
96 between 1991 and 1997 (13) and in South Africa in 2003 (14) have also been reported.
97 These examples, combined with the recently reported cases of XDR NG, suggest that larger

98 outbreaks of these or similar XDR strains are imminent, potentially arriving in Australia via
99 repeated importation from the Asia-Pacific region as has been observed previously (13, 15).

100 The prevalence of gonorrhoea in Australia is highest in remote Aboriginal and Torres Strait
101 Islander populations and among men who have sex with men (MSM) in metropolitan
102 centres. Although to date most reported cases of XDR NG have involved heterosexual
103 contact (5, 7, 8, 16), we have chosen to focus on MSM due to the high incidence of
104 gonorrhoea in this population, frequent sexual contact when travelling overseas, and
105 evidence of the importance of oropharyngeal NG in driving transmission in this population
106 (17, 18). These factors together suggest that establishment of an XDR NG strain within an
107 MSM population could spark a rapidly expanding gonorrhoea epidemic that would be
108 difficult to contain (19).

109 Without an effective gonococcal vaccine, developing appropriate public health responses to
110 identify cases, reduce onward transmission, and maintain effective treatment for NG
111 infections, are now key strategic priorities. However, beyond further changes to
112 recommended antibiotic regimens, there is scant published evidence to inform the design of
113 such responses. In this study we use a mathematical model of gonorrhoea transmission in
114 an urban Australian MSM population to evaluate the potential impact of current and
115 alternative surveillance and control strategies on the persistence of imported/emergent NG
116 strains. Note that this study mainly focuses on outbreaks attributable to such imported
117 strain.

118 Results

119 Model Simulation and Calibration

120 An individual-based model was developed that captures the dynamic formation and
121 dissolution of sexual partnerships in a population of 10,000 MSM, sexual acts within
122 partnerships, and the transmission of NG between 3 anatomical sites: urethra, oropharynx,
123 anorectum. The natural history of gonorrhoea is captured in a Susceptible-Exposed-
124 Infectious-Recovered (SEIRS) framework. Parameter values relating to gonorrhoea natural
125 history have been derived, where possible, from published literature and are listed in Table
126 1. In each daily simulation cycle (illustrated in Figure 1) transmission events are tracked and
127 the infectious status of all individuals updated. Events relating to natural progression of
128 infection, testing, treatment of infection and entry/exit of individuals from the sexually
129 active population are then processed before concluding each simulation cycle with
130 partnership formation and dissolution.

131 The model was calibrated to estimated anatomical site-specific NG prevalence in a
132 hypothetical community sample as reported in Zhang et al. (18): oropharynx 8.6%;
133 anorectum 8.3%; urethra 0.26% (Table 1). Comparison of 50 simulations from the calibrated
134 model to prevalence targets is shown in Figure 2. Equilibrium is reached at approximately
135 three years, with the site-specific prevalence curves then fluctuating around the target
136 values. Figures A1 and A2 (Technical Appendix) provide validation that the characteristics of
137 the model-generated sexual contact network are consistent with data reported in the GCPS
138 Sydney 2018 (20) and the HIM Study (21).

139 Impact of Outbreak Response Strategies

140 Outbreak Response Strategies

141 The calibrated model is then used to assess the effectiveness of intervention strategies in
142 controlling strain importations. To simulate importation/emergence, we first select an
143 infection site based on relative site-specific incidence rates reported in Callander et. al. (22),
144 yielding an oro-pharynx: urethra: rectum imported case ratio of 47:23:30. An imported
145 gonococcal strain is then seeded in a randomly selected individual, already infected with the
146 endemic strain, at the selected anatomical site. The endemic strain is removed immediately
147 prior to strain importation, with simulations focusing on outbreaks related to the imported
148 strain. We assume the imported strain is detectable and treatable. Note that the imported
149 strain is not particularly resistant and can be treated with current treatment or alternatives.

150 We consider two levels of testing coverage (Table A6, Technical Appendix): current testing
151 (CT) reflects testing coverage as reported in GCPS Sydney 2018 (20) and ACCESS (23);
152 recommended testing (RT) is based on the 2016 Australian STI Management Guidelines (24)
153 according to which all MSM should test at least once per year and those with 20+ sexual
154 partners per year should test every three months. We also provide results with testing rates
155 according to the 2019 Sexually Transmissible Infections in Gay Men Action Group (STIGMA)
156 guidelines 2019 (25), which recommends 3 monthly testing for most sexually active MSM
157 not in monogamous relationships, as a sensitivity analysis in the Technical Appendix. We
158 assume testing occurs at all anatomical sites simultaneously with 100% sensitivity, 100%
159 treatment efficacy in individuals who test positive for gonorrhoea infection, and clearance
160 of viable gonococci from all anatomical sites within 1 day. An alternative scenario assuming
161 95% test sensitivity, 95% treatment efficacy, and a 7-day clearance delay for asymptomatic
162 infection is presented in the Technical Appendix.

163 Further, we examine the effect of combining different levels of sexual contact-based testing
164 and treatment in combination with current/recommended screening. The Australian
165 Contact Tracing Guidelines (26) advise that recent (last 2 months) sexual contacts of index
166 patients with gonorrhoea should be offered testing and treatment to minimise reinfection
167 and onward transmission. We consider provision of testing/treatment to 80% or 100% of
168 current regular partners (PTT_{R80} and PTT_R) and four additional strategies, whereby 20%,
169 30%, 40% or 50% of casual partners in the last 2 months are tested/treated (PTT_{RC20} , PTT_{RC30} ,
170 etc.) as summarised in Table 2.

171 **Outbreak Containment**

172 The impact of outbreak response strategies on the ability of the imported strain to persist in
173 the population are summarised in Table 3. Without enhanced public health measures (CT),
174 the imported strain became extinct in 66% of simulations at 6 months post-importation,
175 with a further 26% identified but persisting and 8% of outbreaks yet to be detected. By 2
176 years post-importation, 16% of simulated outbreaks still persisted, with mean population
177 prevalence of 2.3% (IQR [0.5%-3.6%]). Almost 90% of this subset persisted at 5 years post-
178 importation, reflecting endemic establishment (mean prevalence 14.7% (IQR [14.3%-
179 16.7%])). Prevalence values for persisting simulations under the scenarios and time-points
180 shown in Table 3 are reported in Table A12 of the Technical Appendix.

181 All enhanced public health interventions increased the potential for control of the imported
182 strain. Increasing testing to the recommended level (RT) had an increasing impact with time,
183 with elimination of the imported strain rising from 84% to 86% and from 86% to 90% of
184 simulations, at 2 years and 5 years respectively. This strategy, however, greatly reduced the
185 size of the remaining outbreaks, with mean prevalence of 0.57% (IQR [0.1%-0.84%]) and

186 1.9% (IQR [0.8%-2.9%]) at 2 and 5 years, respectively, for the subset of simulations in which
187 the imported strain persists. When current testing was supplemented by testing and
188 treating 100% of regular partners (CT+PTT_R), the probability of eliminating the imported
189 strain increased to 96% and 98.5% of simulations and the mean prevalence of persisting
190 strains was reduced to 0.25% (IQR [0.04%-0.38%]) and 0.45% (IQR [0.07%-0.78%]) at 2 and 5
191 years, respectively. The combination of recommended testing with testing/treating 100% of
192 regular partners (RT+PTT_R) led to elimination of the imported strain in 98.7% of simulations
193 at 2 years, rising to 99.8% when supplemented by testing and treating 50% of casual
194 partners in the last 2 months (RT+PTT_{RC50}). In both these scenarios, the imported strain was
195 eliminated in all 5000 simulations at 5 years post-importation.

196 Figure 3 provides a more detailed picture of detection and persistence over time for the
197 interventions listed in Table 3. Panel A shows that the imported strain is either eliminated or
198 are detected within 12 months of importation in all simulations. Under all eight control
199 strategies (panels B and C), the proportion of simulations in which outbreaks have been
200 detected but persist peaks at around 6 months post-importation. Inclusion of testing and
201 treatment of regular partners greatly reduces the proportion of simulations in which the
202 imported strain persists at each time point and this effect is further enhanced by
203 testing/treatment of casual partners. The RT strategies have a modest impact alone but
204 bring forward elimination of outbreaks when combined with partner treatment.

205 **Outbreak duration and containment**

206 In Figure 4 we show how success in eliminating the imported strain rises in quarterly periods
207 after detection (panels A and B). Testing/treatment of regular partners is the most effective
208 single strategy, increasing the probability of elimination within 3 months from 63% to 78%

209 under CT when combined with partner treatment. This rises to 82% with testing/treatment
210 of 50% of casual partners. To achieve >90% elimination at 12 months post-detection, RT in
211 combination with testing/treatment of regular partners is required at a minimum. The
212 probability of achieving elimination within 24 months of detection approaches 100% under
213 strategies that additionally incorporate casual partner testing/treatment.

214 Panels C and D show how successful the various control strategies are in reducing the
215 number of prevalent infections (outbreak size) at quarterly intervals. RT and/or addition of
216 partner testing/treatment greatly reduce the growth in outbreak size in comparison to CT.
217 Addition of RT to partner testing is more effective in constraining outbreak size than
218 expanding testing and treatment to 20% or 50% of casual partners.

219 Sensitivity analysis

220 Sensitivity analysis is summarised in detail in section 3.2 of the technical appendix, covering
221 the impact of less favourable assumptions regarding diagnosis and treatment, the impact of
222 increased condom-use and the effect of a 6-month delay in public health response. Also,
223 less favourable assumptions for diagnosis and treatment led to decreased effects of the
224 interventions (Table A11). Increased condom-use had little impact with base-case
225 parameters due to the strong role of oropharyngeal transmission but had greater effect
226 with altered assumptions around symptomatic proportions (Table A13). Finally, all
227 interventions were much less effective if implemented at a 6-month delay post-importation
228 (Table A10).

229 Discussion

230 In this modelling study we show that dissemination of emergent or imported strains of NG
231 can be contained in a simulated Australian urban MSM population using moderately intense

232 combinations of population-based and case-based testing/treatment strategies. The work is
233 motivated by recent reports from Australia and the UK of imported XDR NG strains (5, 7,
234 16), including those with documented ceftriaxone/azithromycin dual treatment failure for
235 oropharyngeal infection (7, 8) and the potential for outbreaks that are difficult and
236 expensive to control (19). For instance, analysis of the historical rise in Australia of
237 ciprofloxacin resistance (13) suggests that once resistant NG had become established
238 overseas, variants of these resistant strains were repeatedly imported into Australia, leading
239 eventually to a requirement to change the recommended treatment.

240 Under current testing practice, we find that around 1 in 7 imported NG strains will persist in
241 the simulated MSM population at 5 years post-importation, with a mean prevalence of 15%
242 at this point. However, both the probability of persistence and resulting prevalence can be
243 greatly reduced by enhanced public health measures. When regular partners of NG cases
244 are tested, as recommended in Australian contact tracing guidelines (27), the persistence
245 probability drops to 0.5% at 5 years post-importation and falls further to 0.27% and 0%,
246 respectively, if 20% or 50% of casual partners within the last 2 months can be
247 tested/treated. These more intense case-based strategies are effective but need to be
248 sustained for up to 2 years post-detection to eliminate >95% of imported strains. In the
249 recent high-level azithromycin resistance NG outbreak in England (28), 118 total cases
250 across both heterosexuals and MSM were investigated in an outbreak lasting more than 4
251 years. In this instance, ~35% of partners of heterosexuals but none of MSM were recorded
252 as being tested, suggesting that reaching the simulated testing levels evaluated here may be
253 challenging.

254 A complementary approach is to increase the rate of background STI testing. Current testing
255 rates in Australia are high when compared with other international settings (29), but are
256 substantially lower than recommended in the Australian STI Management (24) and STIGMA
257 (25) guidelines. Our results show that this approach in isolation is more effective at
258 constraining the size of outbreaks than eliminating them. In Australia, it may be plausible to
259 achieve the recommended testing level given that in 2018 around 90% of surveyed Sydney
260 MSM undertook an STI test at least once per year (20), and that a large proportion of high-
261 risk MSM access three-monthly STI testing in conjunction with the uptake of HIV pre-
262 exposure prophylaxis (30). In addition, the new Australian STIGMA guidelines recommend
263 quarterly testing for men with ~4+ partners per year (25), which would greatly increase the
264 proportion of the MSM population undertaking three-monthly STI testing.

265 Combining case-based strategies with increased population testing was beneficial for
266 control, with all such simulations in which greater than 20% of casual partners were
267 tested/treated, resulting in elimination of the imported strain within 5 years. If 50% of
268 casual partners are tested/treated ($RT+PTT_{RC50}$), elimination of the imported strain occurred
269 within 2 years of detection in all simulations with no outbreak exceeding 20 prevalent
270 infections during this period. These results highlight the importance of combined
271 approaches using both targeted (partner testing and treatment) and population level
272 strategies (increased community testing) to facilitate elimination. While not investigated
273 here, synergistic effects between these interventions seem possible, with community
274 testing reducing outbreak size and facilitating more intensive contact tracing.

275 In sensitivity analysis we also considered the effect of increasing condom use. This did not
276 have a significant impact on control of the imported strain in the base case. This is because

277 under the base case assumption that 90% of urethral cases are symptomatic and rapidly
278 treated, urethral infection is relatively unimportant in overall transmission. When the
279 fraction of urethral infections assumed to be symptomatic was reduced to 60%, urethral
280 transmission became much more important and consequently condom use was found to be
281 more effective.

282 The findings of this study should be interpreted in the context of the following limitations.
283 The baseline (pre-intervention) model was calibrated to anatomical site-specific gonorrhoea
284 prevalence as estimated by Zhang *et al.* (18), leading to inferred transmission probabilities,
285 which qualitatively appear plausible but for which no quantitative estimates are available.
286 These prevalence targets were chosen over incidence estimates from the ACCESS study (22)
287 and were similar to more data-driven estimates of prevalence from Victoria (31) but we
288 note that model produces similar site-specific incidence to 2018 ACCESS data.

289 In regard to diagnostic sensitivity and treatment success, we compared our base-case
290 results with more pessimistic assumptions, which resulted in higher persistence
291 probabilities (except for RT and RT_{STIGMA} at 5 years post initial importation), but typically
292 slower outbreak growth. This occurred because as the same prevalence calibration targets
293 were used for these simulations, assuming less effective treatment requires compensatory
294 reductions in transmission probabilities compared to that of the best-case. Co-circulation of
295 an endemic strain with the imported strain and any resultant interactions were not
296 considered in this work, which focused on a single importation event. We note that there is
297 limited evidence of mixed infections occurring at a single anatomical site but if this occurs it
298 appears to be a rare occurrence (32). Sexual behaviour is fixed in time and assumed to be
299 age-independent in this model. As the simulation timeframe is just 5 years, in comparison to

300 a sexual lifetime of ~50 years, we expect little impact of the former. In relation to age
301 variation, this is likely implicitly captured by partner-change rates but could also influence
302 testing rates and the risk of overseas acquisition, which are not considered here. In the base
303 case, we assume that the public health strategies are implemented immediately upon
304 detection of an imported strain. When implementation was delayed by 6 months, partner
305 therapy and increased community testing were much less effective. Finally, we ignore
306 bridging between MSM and heterosexual populations which could increase the likelihood of
307 an imported strain entering the MSM population.

308 This is the first detailed exploration of the potential impacts of outbreak control strategies
309 on the propagation of an imported NG strain. It suggests that a combination of increased
310 case-based STI testing as well more regular background testing would be successful in
311 eliminating onward spread from a very high proportion of importations. Australian
312 guidelines for management of gonococcal infections include a heightened response to cases
313 of ceftriaxone and/or high-level azithromycin resistance (33). This study provides additional
314 evidence of the effect of these approaches alone and in combination with increases in
315 background testing of asymptomatic MSM. Such increases have occurred in the context of
316 the recent roll-out of pre-exposure prophylaxis for HIV in Australia (34) but our results do
317 not support this being an effective strategy in isolation. However, both feasibility and
318 resource utilisation need further investigation, in particular the capacity to deal with
319 multiple and potentially concurrent importation events, such as occurred in the emergence
320 of ciprofloxacin resistance in Australia during the 1990s.

321

322 **Methods**

323 An overview of the modelling methodology is provided here, with complete details provided
324 in the Technical Appendix.

325 **Gonorrhoea Natural History and Transmission**

326 The natural history of gonorrhoea is captured in a Susceptible-Exposed-Infectious-
327 Recovered (SEIRS) framework. Individuals enter the population in the susceptible 'state',
328 and can move progressively through the exposed (infected but not yet infectious) and
329 infectious states following sexual contact with an infected person, before entering the
330 recovered state (immune to reinfection) following resolution of infection, and then finally
331 returning to the susceptible state. We assume a brief duration of immunity reflecting
332 evidence of weak immunity following infection (35) but frequent reinfection (36). Parameter
333 values relating to gonorrhoea natural history have been derived, where possible, from
334 published literature and are listed in Table 1.

335 Transmission is assumed to be possible between each pairing of anatomical sites leading to
336 eight possible routes of transmission (See Table A5, Technical Appendix). Infections at
337 different anatomical sites within a given individual are assumed to be localised and
338 independent, such that infection at one anatomical site does not influence the properties of
339 infection (e.g., duration of infection) at any other anatomical site.

340 **Population and Sexual Behaviour**

341 The model simulates a dynamic network of individuals connected via sexual partnerships,
342 where both long- and short-term partnerships are considered, designated as 'regular' and
343 'casual', respectively. Individuals enter the sexually active population at age 16 years and on

344 reaching age 65 years are replaced with a new individual aged 16 years, having the same
345 sexual behaviour profile as the replaced individual.

346 On entry to the population, individuals are assigned a partner-type preference. Preference
347 can be for regular partners only, casual partners only, or both types of partner. Where
348 relevant, individuals are assigned a casual partner acquisition rate (CPAR). Individuals are
349 also assigned a positional preference for anal sex (receptive/insertive/no preference).
350 Partnership durations for each partnership type are assigned at formation by sampling from
351 a distribution (see Table A2, Technical Appendix). Partner preferences and the CPAR
352 distribution were based on data reported in the Gay Community Periodic Survey (GCPS)
353 Sydney 2018 (20) and the Health In Men (HIM) Study (21), respectively. Group sex (37) is
354 included as a subclass of casual partnership that only lasts for one day. Except for group sex,
355 individuals can have at most one regular partner and/or one casual partner concurrently. An
356 individual's sexual behaviour remains constant over time.

357 Within partnerships, individuals can engage in a variety of sexual acts (e.g., anal sex, oral-
358 genital and oral-anal sex, kissing) that facilitate transmission. The frequencies of these acts
359 during partnerships are based on data reported by Phang *et al.* (38) and Rosenberger *et al.*
360 (39). Kissing is an important transmission routine for oropharyngeal infection (40, 41), and if
361 it is not included, the model is not able to catch the high prevalence of oropharyngeal
362 infection.

363 In the baseline model, individuals are tested for gonorrhoea, at a rate based on data
364 reported in GCPS Sydney 2018 (20) and by the Australian Collaboration for Coordinated
365 Enhanced Sentinel Surveillance of Sexually Transmissible Infections and Blood-borne Viruses

366 (ACCESS) (23). Condom use by partnership type is also derived from data reported in GCPS
367 Sydney 2018 (20).

368 Model Calibration

369 The model was calibrated to estimated anatomical site-specific NG prevalence in a
370 hypothetical community sample as reported in Zhang et al. (18): oropharynx 8.6%;
371 anorectum 8.3%; urethra 0.26%. This involved generating 10,000 parameter sets sampled
372 from pre-specified ranges (Table A9, Technical Appendix) and then determining the set with
373 the smallest mean-squared difference between model-generated prevalence and the target
374 values. This calibration establishes the baseline model representing the current situation,
375 where gonorrhoea is endemic in the population, prior to the importation/emergence of a
376 new strain. While the motivation for this work is the threat of new strains that are resistant
377 to current first-line treatments, we are interested here in assessing the effectiveness of
378 outbreak response strategies, assuming imported or emergent strains are still treatable with
379 second-line drugs such as carbapenems (7).

380 Simulation Process

381 Results for each intervention scenario consist of 5,000 model simulations. Initially, each
382 simulation is run for 10 years to establish the partnership network. After introduction of the
383 imported strain, simulations are run with current testing rates until first detection of the
384 imported strain, at which point the desired intervention is initiated and the simulation run
385 for a further 5 years. Note that the imported strain can be detected when symptomatic
386 patients seek for treatment and asymptomatic patients take regular test.

387 At any time-point, a simulation is categorised as being in one of four states regarding the
388 status of the imported strain: 1) *undetected and persisting*; 2) *undetected and extinct*; 3)

389 *detected and persisting*; and 4) *detected and extinct*. All simulations are initiated in the
390 *undetected and persisting* state, with transition to *detected and persisting* occurring at the
391 first positive test and transition to *extinct (detected or undetected)* when the last case
392 resolves.

393 *References*

- 394 1. Unemo M, Shafer WM. Antimicrobial resistance in *Neisseria gonorrhoeae* in the 21st
395 century: past, evolution, and future. Clin Microbiol Rev. 2014;27(3):587-613.
- 396 2. Centers for Disease Control and Prevention. Antibiotic Resistance Threats in the
397 United States 2013 [Available from: [https://www.cdc.gov/drugresistance/threat-report-](https://www.cdc.gov/drugresistance/threat-report-2013/index.html)
398 [2013/index.html](https://www.cdc.gov/drugresistance/threat-report-2013/index.html)].
- 399 3. World Health Organization. Global action plan to control the spread and impact of
400 antimicrobial resistance in *Neisseria gonorrhoeae* 2013 [Available from:
401 <http://www.who.int/reproductivehealth/publications/rtis/9789241503501/en/>].
- 402 4. Lahra MM, Martin I, Demczuk W, Jennison AV, Lee KI, Nakayama SI, et al.
403 Cooperative recognition of internationally disseminated ceftriaxone-resistant *Neisseria*
404 *gonorrhoeae* strain. Emerg Infect Dis. 2018;24(4):735-40.
- 405 5. Whiley DM, Jennison A, Pearson J, Lahra MM. Genetic characterisation of *Neisseria*
406 *gonorrhoeae* resistant to both ceftriaxone and azithromycin, Australia 2018. Lancet Infect
407 Dis. 2018;18(7):717-8.
- 408 6. Jennison AV, Whiley D, Lahra MM, Graham RM, Cole MJ, Hughes G, et al. Genetic
409 relatedness of ceftriaxone-resistant and high-level azithromycin resistant *Neisseria*
410 *gonorrhoeae* cases, United Kingdom and Australia, February to April 2018. Eurosurveillance.
411 2019;24(8):1900118.

- 412 7. Eyre DW, Town K, Street T, Barker L, Sanderson N, Cole MJ, et al. Detection in the
413 United Kingdom of the *Neisseria gonorrhoeae* FC428 clone, with ceftriaxone resistance and
414 intermediate resistance to azithromycin, October to December 2018. Euro Surveill.
415 2019;24(10).
- 416 8. Poncin T, Fouere S, Braille A, Camelena F, Agsous M, Bebear C, et al. Multidrug-
417 resistant *Neisseria gonorrhoeae* failing treatment with ceftriaxone and doxycycline in
418 France, November 2017. Euro Surveill. 2018;23(21).
- 419 9. Rob F, Klubalova B, Nycova E, Hercogova J, Unemo M. Gentamicin 240 mg plus
420 azithromycin 2 g vs. ceftriaxone 500 mg plus azithromycin 2 g for treatment of rectal and
421 pharyngeal gonorrhoea: a randomized controlled trial. Clin Microbiol Infect. 2020;26(2):207-
422 12.
- 423 10. Lewis DA. New treatment options for *Neisseria gonorrhoeae* in the era of emerging
424 antimicrobial resistance. Sexual Health. 2019;16(5):449-56.
- 425 11. Hook EW, III, Golden MR, Taylor SN, Henry E, Tseng C, Workowski KA, et al. Efficacy
426 and Safety of Single-Dose Oral Delafloxacin Compared With Intramuscular Ceftriaxone for
427 Uncomplicated Gonorrhea Treatment: An Open-Label, Noninferiority, Phase 3, Multicenter,
428 Randomized Study. Sex Transm Dis. 2019;46(5):279-86.
- 429 12. Lahra MM, Ward A, Trembizki E, Hermanson J, Clements E, Lawrence A, et al.
430 Treatment guidelines after an outbreak of azithromycin-resistant *Neisseria gonorrhoeae* in
431 South Australia. Lancet Infect Dis. 2017;17(2):133-4.
- 432 13. Hanrahan JK, Hogan TR, Buckley C, Trembizki E, Mitchell H, Lau CL, et al. Emergence
433 and spread of ciprofloxacin-resistant *Neisseria gonorrhoeae* in New South Wales, Australia:
434 lessons from history. J Antimicrob Chemother. 2019;74(8):2214-9.

- 435 14. Moodley P, Sturm AW. Ciprofloxacin-resistant gonorrhoea in South Africa. *Lancet*.
436 2005;366(9492):1159.
- 437 15. Tapsall JW, Limnios EA, Murphy D. Analysis of trends in antimicrobial resistance in
438 *Neisseria gonorrhoeae* isolated in Australia, 1997-2006. *J Antimicrob Chemother*.
439 2008;61(1):150-5.
- 440 16. Horner P, Fifer H, Nathan B, Eyre D, Town K, Mohammed H, et al. P675 Two recent
441 cases of extensively drug-resistant (XDR) gonorrhoea in the united kingdom linked to a
442 european party destination. *Sex Transm Infect*. 2019;95(Suppl 1):A295-A6.
- 443 17. Hui BB, Fairley CK, Chen MY, Grulich AE, Hocking JS, Prestage GP, et al. Oral and anal
444 sex are key to sustaining gonorrhoea at endemic levels in MSM populations: a mathematical
445 model. *Sex Transm Infect*. 2015;91(5):365-9.
- 446 18. Zhang L, Regan DG, Chow EPF, Gambhir M, Cornelisse V, Grulich A, et al. *Neisseria*
447 *gonorrhoeae* transmission among men who have sex with men: an anatomical site-specific
448 mathematical model evaluating the potential preventive impact of mouthwash. *Sex Transm*
449 *Dis*. 2017;44(10):586-92.
- 450 19. Regan DG, Hui BB, Wood JG, Fifer H, Lahra MM, Whiley DM. Treatment for
451 pharyngeal gonorrhoea under threat. *Lancet Infect Dis*. 2018;18(11):1175-7.
- 452 20. Broady T, Mao L, Lee E, Bavinton B, Keen P, Bambridge C, et al. Gay Community
453 Periodic Survey: Sydney 2018. Centre for Social Research in Health, UNSW Sydney; 2018.
- 454 21. Fogarty A, Mao L, Zablotska I, Santana HR, Prestage G, Rule J, et al. The Health in
455 Men and Positive Health cohorts: a comparison of trends in the health and sexual behaviour
456 of HIV-negative and HIV-positive gay men, 2002-2005. National Centre in HIV Social
457 Research, UNSW Sydney; 2006.

- 458 22. Callander D, Guy R, Fairley CK, McManus H, Prestage G, Chow EPF, et al. Gonorrhoea
459 gone wild: rising incidence of gonorrhoea and associated risk factors among gay and
460 bisexual men attending Australian sexual health clinics. *Sex Health*. 2019;16(5):457-63.
- 461 23. Callander D, Donovan B, Guy R. The Australian Collaboration for Coordinated
462 Enhanced Sentinel Surveillance of Sexually Transmissible Infections and Blood Borne
463 Viruses: NSW STI report 2007-2014. Sydney, NSW, Australia: Kirby Institute, UNSW Sydney;
464 2015.
- 465 24. Australasian Sexual Health Alliance. Australian STI Management Guidelines 2018
466 [Available from: <http://www.sti.guidelines.org.au/>.
- 467 25. STIGMA. Australian STI & HIV Testing Guidelines 2019 for Asymptomatic MSM 2019
468 [Available from: [https://stipu.nsw.gov.au/wp-](https://stipu.nsw.gov.au/wp-content/uploads/STIGMA_Guidelines2019_Final-1.pdf)
469 [content/uploads/STIGMA_Guidelines2019_Final-1.pdf](https://stipu.nsw.gov.au/wp-content/uploads/STIGMA_Guidelines2019_Final-1.pdf).
- 470 26. Australian Contact Tracing Guidelines [Available from:
471 <http://www.contacttracing.ashm.org.au/>.
- 472 27. Hui B, Fairley C, Chen M, Grulich A, Hocking J, Prestage G, et al. Oral and anal sex are
473 key to sustaining gonorrhoea at endemic levels in MSM populations: a mathematical model.
474 *Sex Transm Infect*. 2015;91(5):365-9.
- 475 28. Smolarchuk C, Wensley A, Padfield S, Fifer H, Lee A, Hughes G. Persistence of an
476 outbreak of gonorrhoea with high-level resistance to azithromycin in England, November
477 2014–May 2018. 2018;23(23):1800287.
- 478 29. World Health Organization (WHO). Guidelines: Prevention and Treatment of HIV and
479 Other Sexually Transmitted Infections Among Men Who Have Sex with Men and
480 Transgender People: Recommendations for a Public Health Approach 2011. 2011 [Available
481 from: <https://www.ncbi.nlm.nih.gov/books/NBK304456/>.

- 482 30. The Australasian Society of HIV, Viral Hepatitis and Sexual Health Medicine, (ASHM).
483 PrEP Guidelines Update. Prevent HIV by Prescribing PrEP. Sydney, 2019. Sydney [Available
484 from: <https://ashm.org.au/resources/hiv-resources-list/prep-guidelines-2019/>.
- 485 31. Chow EPF, Tomnay J, Fehler G, Whiley D, Read TRH, Denham I, et al. Substantial
486 increases in chlamydia and gonorrhoea positivity unexplained by changes in individual-level
487 sexual behaviors among men who have sex with men in an Australian sexual health service
488 from 2007 to 2013. *Sex Transm Dis.* 2015;42(2):81-7.
- 489 32. Goire N, Kundu R, Trembizki E, Buckley C, Hogan TR, Lewis DA, et al. Mixed
490 gonococcal infections in a high-risk population, Sydney, Australia 2015: implications for
491 antimicrobial resistance surveillance? *J Antimicrob Chemother.* 2016;72(2):407-9.
- 492 33. Communicable Diseases Network Australia (CDNA). The Series of National Guidelines
493 (SoNG): Gonococcal Infection (Appendix G) 2019 [Available from:
494 <https://www1.health.gov.au/internet/main/publishing.nsf/Content/cdnasongs.htm>.
- 495 34. Department of Health, Australian Government, . Pharmaceutical Benefits Scheme
496 (PBS) [Available from: <http://www.pbs.gov.au/pbs/home>.
- 497 35. Liu Y, Feinen B, Russell M. New Concepts in Immunity to Neisseria Gonorrhoeae:
498 Innate Responses and Suppression of Adaptive Immunity Favor the Pathogen, Not the Host.
499 *Front Microbiol.* 2011;2:52.
- 500 36. Lister NA, Smith A, Tabrizi SN, Garland S, Fairley CK. Re-infection of Neisseria
501 gonorrhoeae and Chlamydia trachomatis infections among men who have sex with men. *Int*
502 *J STD AIDS.* 2006;17(6):415-7.
- 503 37. Wilson DP, Prestage G, Donovan B, Gray RT, Hoare A, McCann PD, et al. Phase A of
504 the National Gay Men's Syphilis Action Plan: modelling evidence and research on

505 acceptability of interventions for controlling syphilis in Australia. Sydney: National Centre in
506 HIV Epidemiology and Clinical Research, UNSW Sydney; 2009.

507 38. Phang CW, Hocking J, Fairley CK, Bradshaw C, Hayes P, Chen MY. More than just anal
508 sex: the potential for sexually transmitted infection transmission among men visiting sex-on-
509 premises venues. *Sex Transm Infect.* 2008;84(3):217-9.

510 39. Rosenberger JG, Reece M, Schick V, Herbenick D, Novak DS, Van Der Pol B, et al.
511 Sexual behaviors and situational characteristics of most recent male-partnered sexual event
512 among gay and bisexually identified men in the United States. *J Sex Med.* 2011;8(11):3040-
513 50.

514 40. Chow EP, Cornelisse VJ, Williamson DA, Priest D, Hocking JS, Bradshaw CS, et al.
515 Kissing may be an important and neglected risk factor for oropharyngeal gonorrhoea: a
516 cross-sectional study in men who have sex with men. *Sex Transm Infect.* 2019;95(7):516-21.

517 41. Fairley CK, Cornelisse VJ, Hocking JS, Chow EP. Models of gonorrhoea transmission
518 from the mouth and saliva. *The Lancet Infectious Diseases.* 2019;19(10):e360-e6.

519 42. Hook EW, III., Handsfield HH. Gonococcal Infections in the Adult. In: Holmes KK,
520 Sparling PF, Stamm WE, Piot P, Wasserheit JN, Corey L, et al., editors. *Sex Transm Dis.* New
521 York: McGraw Hill; 2008.

522 43. Ryder N, Lockart IG, Bourne C. Is screening asymptomatic men who have sex with
523 men for urethral gonorrhoea worthwhile? *Sexual Health.* 2010;7(1):90-1.

524 44. Rebe K, Lewis D, Myer L, de Swardt G, Struthers H, Kamkuemah M, et al. A Cross
525 Sectional Analysis of Gonococcal and Chlamydial Infections among Men-Who-Have-Sex-
526 with-Men in Cape Town, South Africa. *PLoS One.* 2015;10(9):e0138315.

527 45. Dudareva-Vizule S, Haar K, Sailer A, Wisplinghoff H, Wisplinghoff F, Marcus U, et al.
528 Prevalence of pharyngeal and rectal *Chlamydia trachomatis* and *Neisseria gonorrhoeae*

529 infections among men who have sex with men in Germany. *Sex Transm Infect.*
530 2014;90(1):46-51.

531 46. Fairley CK, Chen MY, Bradshaw CS, Tabrizi SN. Is it time to move to nucleic acid
532 amplification tests screening for pharyngeal and rectal gonorrhoea in men who have sex
533 with men to improve gonorrhoea control? *Sexual Health.* 2011;8(1):9-11.

534 47. Chow EP, Camilleri S, Ward C, Huffam S, Chen MY, Bradshaw CS, et al. Duration of
535 gonorrhoea and chlamydia infection at the pharynx and rectum among men who have sex
536 with men: a systematic review. *Sex Health.* 2016;13(3):199-204.

537 48. Fairley CK, Chow EP, Hocking JS. Early presentation of symptomatic individuals is
538 critical in controlling sexually transmissible infections. *Sexual Health.* 2015;12(3):181-2.

539 49. Harrison WO, Hooper RR, Wiesner PJ, Campbell AF, Karney WW, Reynolds GH, et al.
540 A trial of minocycline given after exposure to prevent gonorrhea. *N Engl J Med.*
541 1979;300(19):1074-8.

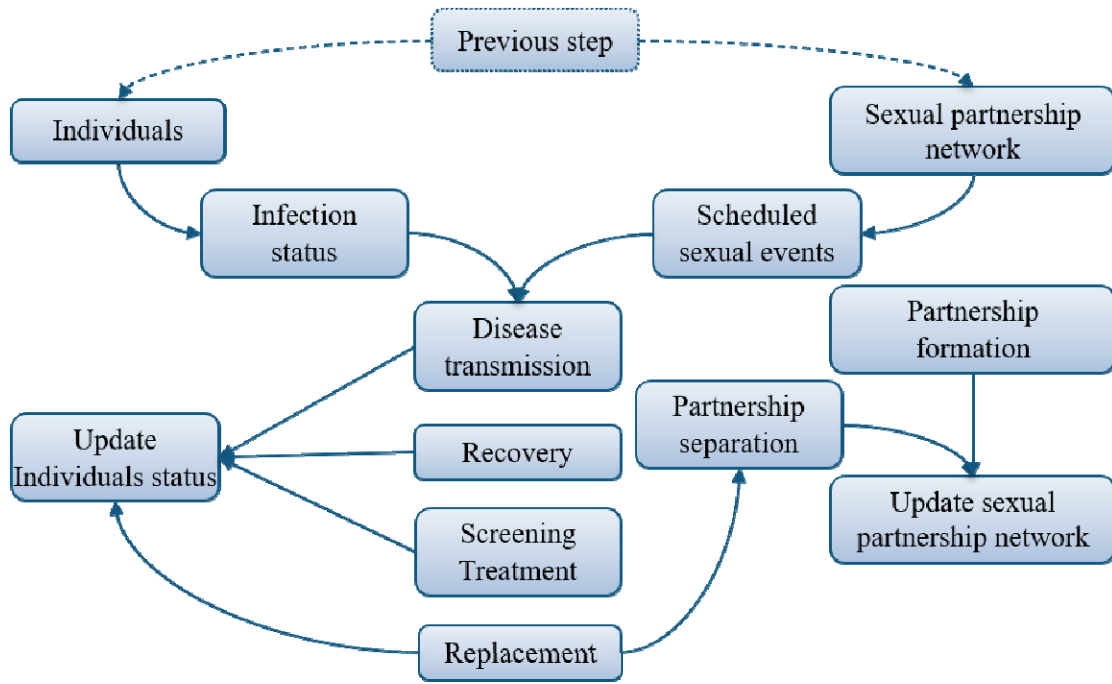
542 50. Mehta SD, Erbeling EJ, Zenilman JM, Rompalo AM. Gonorrhoea reinfection in
543 heterosexual STD clinic attendees: longitudinal analysis of risks for first reinfection. *Sex*
544 *Transm Infect.* 2003;79(2):124-8.

545 51. Hedges SR, Mayo MS, Mestecky J, Hook EW, 3rd, Russell MW. Limited local and
546 systemic antibody responses to *Neisseria gonorrhoeae* during uncomplicated genital
547 infections. *Infect Immun.* 1999;67(8):3937-46.

548 52. Cornelisse VJ, Chow EP, Huffam S, Fairley CK, Bissessor M, De Petra V, et al.
549 Increased detection of pharyngeal and rectal gonorrhea in men who have sex with men
550 after transition from culture to nucleic acid amplification testing. *Sex Transm Dis.*
551 2017;44(2):114-7.

553 Figures and Figure Legends

554

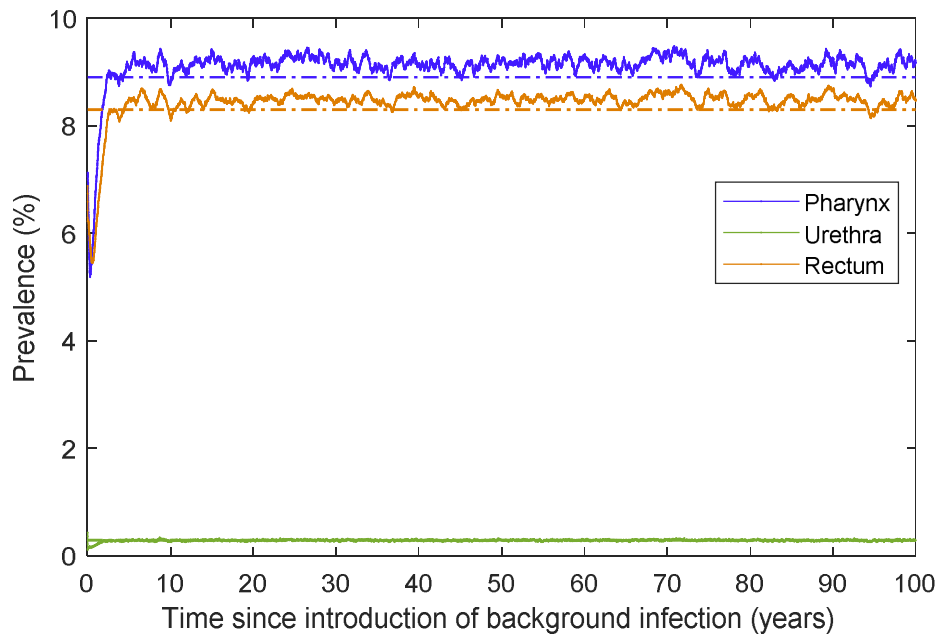


555

556 Figure 1. Schematic illustration of sequence of events that occur in a single simulation cycle

557 of the individual-based model.

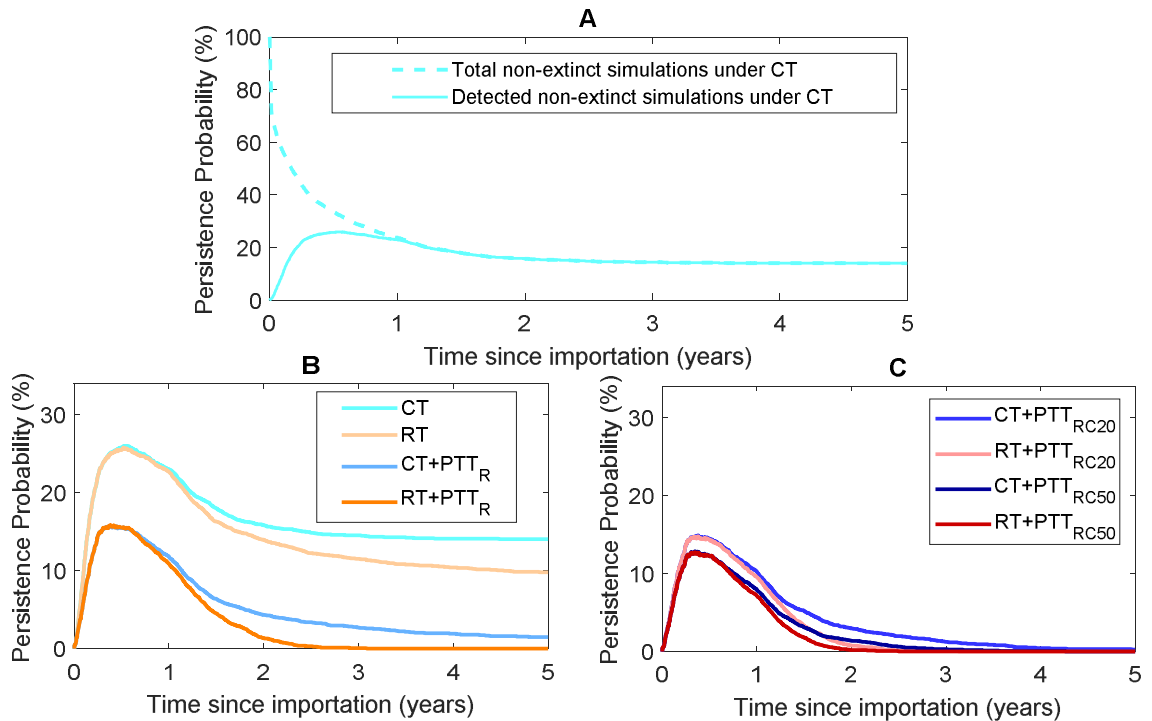
558



560

561 **Figure 2.** Average daily model-generated site-specific prevalence over 50 simulations (solid
562 lines) and calibration targets (dashed lines). Each simulation was run for 100 years using the
563 per-act transmission probabilities obtained through the calibration process and daily site-
564 specific prevalence was averaged over the 50 simulations.

565



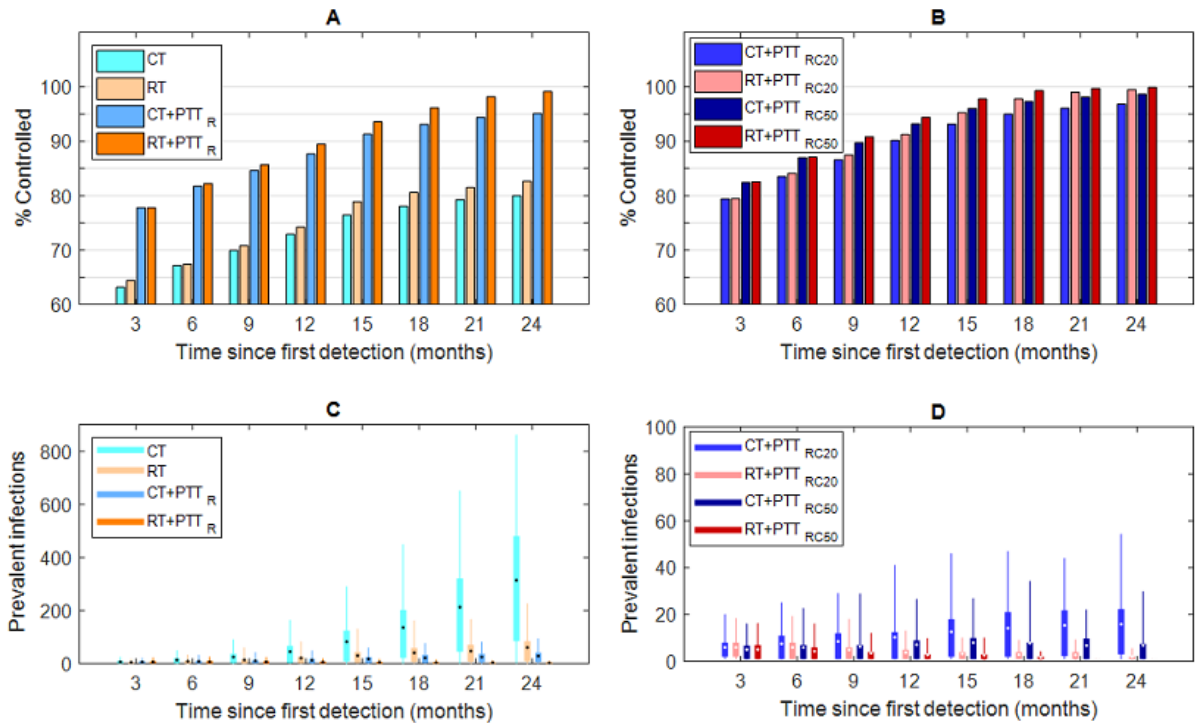
567

568 **Figure 3.** Panel A shows the persistence probability as a function of time under current
 569 testing. Dashed line: all simulations in which the imported strain persists, i.e., detected and
 570 undetected (100% at time = 0). Solid line: simulations in which the imported strain is
 571 detected and persisting (0% at time = 0). Dashed and solid lines converge at the end of the
 572 first year post-importation. Panel B shows trajectories for current and recommended testing
 573 with and without testing of regular partners. Panel C shows trajectories for current and
 574 recommended testing with testing of regular partners and a proportion of casual partners.

575

576

577



579

580 **Figure 4.** Panel A and B show the proportion of those simulations in which the imported
 581 strain is extinct, as a function of the time from the first detection and outbreak response
 582 strategy. Panel C and D shows the outbreak size of imported NG strain among these
 583 simulations as a function of time from the first detection and outbreak response strategy.
 584 The box denotes the interquartile range (25% to 75%), the whiskers the quantile (5% to
 585 95%), the horizontal line in each box the median, and the dot in each box the mean.
 586 Outbreak size is the number of infected individuals at each time point for simulations in
 587 which the imported strain persists.

588

590 **Table 1.** Gonorrhoea infection parameters and prevalence targets for model calibration.

Parameter description	Value	Source
<i>Proportion of infections that are symptomatic by anatomical site</i>		
Oropharyngeal infection	0	Oropharyngeal gonorrhoea is rarely associated with symptoms (42)
Urethral infection	90%	(43, 44)
Anorectal infection	12%	(45)
<i>Average duration of infection stages (range)</i>		
Oropharyngeal infection	84 days (70,138)	Sampled from $\Gamma(201,0.4)$ within the specified range (46, 47)
Urethral infection	84 days (70, 140)	Sampled from $\Gamma(206,0.4)$ within the specified range (17, 18)
Anorectal infection	343 days (336,361)	Sampled from $\Gamma(3702,0.1)$ within the specified range (47)
Time from onset of anorectal/urethral symptoms to treatment	3 days (1,7)	Sampled from $\Gamma(3,0.86)$ within the specified range (48)
Incubation	4 days (2,10)	Sampled from $\text{Exp}(4)$ within the specified range (49)
Exposed	3.6 days (1,9)	Sampled from $U(1, \text{length of incubation period})$ within the specified range

Immunity	3.5 days (1,7)	Assumption based on (50, 51)
<i>Prevalence targets for model calibration (95% CI)</i>		
Oropharynx	8.6% (7.7-9.5)	Based on (18) and comparable
Anorectum	8.3% (7.4-9.1)	with (52)
Urethra	0.26% (0.04-0.35)	Based on (18)

591

592

593

594

595

596

597

598

599

600

601

602

603

604

605

606

607

608

609

610 **Table 2.** Outbreak response strategies and notation used

Strategy	Current testing level (CT)	Recommended testing level (RT)
No contact tracing	CT	RT
Tracing and treating 80% regular partners (PTT _{R80})	CT + PTT _{R80}	RT + PTT _{R80}
Tracing and treating 100% regular partners (PTT _R)	CT + PTT _R	RT + PTT _R
Tracing and treating regular + 20% casual partners (PTT _{RC20})	CT + PTT _{RC20}	RT + PTT _{RC20}
Tracing and treating regular + 30% casual partners (PTT _{RC30})	CT + PTT _{RC30}	RT + PTT _{RC30}
Tracing and treating regular + 40% casual partners (PTT _{RC40})	CT + PTT _{RC40}	RT + PTT _{RC40}
Tracing and treating regular + 50% casual partners (PTT _{RC50})	CT + PTT _{RC50}	RT + PTT _{RC50}

611

612

613

614

615

616

617

618 **Table 3.** Proportion of simulations in which the imported strain was detected and
 619 persisting, or extinct at 6 months, 2 years and 5 years post-importation

Response strategies	Detected and Persisting (%)			Extinct (%)		
	6 months	2 years	5 years	6 months	2 year	5 year
CT	25.8	15.8	14.0	66.3	84.2	86.0
CT+ PTT _{R80}	18.1	7.10	4.46	74.1	92.9	95.5
CT+ PTT _R	15.5	4.3	1.44	76.7	95.7	98.6
RT	25.5	13.9	9.8	66.6	86.1	90.2
RT+ PTT _{R80}	17.8	3.98	0.02	74.3	96.0	100
RT+ PTT _R	15.5	1.34	0	76.6	98.7	100
CT+ PTT _{RC20}	14.4	2.94	0.24	77.7	97.1	99.8
CT+ PTT _{RC30}	13.7	2.28	0.1	78.4	97.7	99.9
CT+ PTT _{RC40}	12.7	1.9	0.12	79.4	98.1	99.9
CT+ PTT _{RC50}	12.3	1.36	0	79.8	98.6	100
RT+ PTT _{RC20}	14.3	0.78	0	77.8	99.2	100
RT+ PTT _{RC30}	13.4	0.44	0	78.7	99.6	100
RT+ PTT _{RC40}	12.7	0.3	0	79.4	99.7	100
RT+ PTT _{RC50}	12.2	0.18	0	79.9	99.8	100

620 Note that the proportion of simulations where the imported strain was undetected and
 621 persisting was 7.9% at 6 months post-importation under all scenarios and 0% at other time
 622 points.