

1 **Investigating the causal relationship between allergic disease and mental health**

2 Ashley Budu-Aggrey PhD^{1,2}, Sally Joyce BSc², Neil M Davies PhD^{1,2,3}, Lavinia Paternoster PhD^{1,2},
3 Marcus R. Munafò PhD^{1,4}, Sara J Brown FRCPE PhD⁵, Jonathan Evans PhD^{2,6}, Hannah M. Sallis PhD
4 ^{1,2,4,6}

5 ¹Medical Research Council (MRC) Integrative Epidemiology Unit at the University of Bristol, Bristol, UK

6 ²Bristol Medical School, Population Health Sciences, University of Bristol, Bristol, UK

7 ³K.G. Jebsen Center for Genetic Epidemiology, Department of Public Health and Nursing, NTNU,
8 Norwegian University of Science and Technology, Norway.

9 ⁴ School of Psychological Science, University of Bristol, Bristol, UK

10 ⁵Centre for Genomic and Experimental Medicine, Institute of Genetics and Molecular Medicine, The
11 University of Edinburgh, Edinburgh, UK

12 ⁶Centre for Academic Mental Health, Population Health Sciences, University of Bristol, Bristol, UK

13

14 **Correspondence**

15 Ashley Budu-Aggrey ashley.budu-aggrey@bristol.ac.uk
16 MRC Integrative Epidemiology Unit
17 Population Health Sciences, Bristol Medical School
18 University of Bristol
19 Oakfield House
20 Oakfield Grove
21 Bristol, BS8 2BN

22

23 **Funding**

24 AB-A, ND, LP, MRM & HMS work in a research unit funded by the UK Medical Research Council
25 (MC_UU_00011/1, MC_UU_00011/7). LP received funding from the British Skin Foundation (8010
26 Innovative Project) and the Academy of Medical Sciences Springboard Award, which is supported by
27 the Wellcome Trust, The Government Department for Business, Energy and Industrial Strategy, the
28 Global Challenges Research Fund and the British Heart Foundation [SBF003\1094]. HMS is supported
29 by the European Research Council (Grant ref: 758813 MHINT). This work was supported by the
30 National Institute for Health Research (NIHR) Biomedical Research Centre at the University Hospitals
31 Bristol National Health Service Foundation Trust. The views expressed in this publication are those of
32 the authors and not necessarily those of the NHS, the National Institute for Health Research or the
33 Department of Health and Social Care. SJB holds a Wellcome Trust Senior Research Fellowship in
34 Clinical Science (106865/Z/15/Z) and a British Skin Foundation large project grant. NMD is supported
35 by a Norwegian Research Council Grant number 295989. The funders had no influence on study
36 design, data collection and analysis, decision to publish, or preparation of the manuscript.

37 **Competing interests**

38 LP has received personal fees from Merck for Scientific Input Engagement related to MR
39 methodology. All other authors report no conflicts of interest.

40

41 **Word count: 3,916**

42 **Abstract**

43 Background

44 Observational studies have reported an association between allergic disease and mental health, but
45 a causal relationship has not been established.

46

47 Objective

48 To use Mendelian Randomization (MR) to investigate a possible causal relationship between atopic
49 disease and mental health phenotypes.

50

51 Methods

52 The observational relationship between allergic disease and mental health was investigated in UK
53 Biobank. The direction of causality was investigated with bidirectional two-sample MR using
54 summary-level data from published genome-wide association studies. A genetic instrument was
55 derived from associated variants for a broad allergic disease phenotype to test for causal
56 relationships with various mental health outcomes. Genetic instruments were also derived for
57 mental health conditions to assess causality in the reverse direction. We also investigated if these
58 relationships were specific to atopic dermatitis (AD), asthma or hay fever.

59

60 Results

61 The broad allergic disease phenotype was phenotypically associated with most measures of mental
62 health, but we found little evidence of causality in either direction. However, we did find evidence of
63 genetic liability for bipolar disorder causally influencing hay fever risk (OR=0.94 per doubling odds of

64 bipolar disorder risk; 95%CI=0.90-0.99; P -value=0.02), but evidence of a phenotypic association was
65 weak.

66

67 Conclusions

68 Few of the phenotypic associations between allergic disease and mental health were replicated. Any
69 causal effects we detected were considerably attenuated compared to the phenotypic association.
70 This suggests that most co-morbidity observed clinically is unlikely to be causal.

71

72 Clinical Implication

73 We found little evidence that genetic predisposition to allergic disease *causes* mental ill-health, and
74 *vice versa*, which suggests that intervening to prevent onset of allergic disease is unlikely to directly
75 prevent the onset of mental ill-health.

76

77

78

79 **Key Messages**

- 80 ● Mendelian randomization effect estimates suggest that the phenotypic association between
81 allergic disease and mental health is likely to be inflated
- 82 ● Causal analysis was unable to corroborate the phenotypic associations observed between allergic
83 disease and mental health phenotypes
- 84 ● Intervening on an individual's allergic disease is not likely to directly improve their mental health

85

86

87 **Capsule summary**

88 Mendelian Randomization suggests that evidence of a causal relationship between allergic disease
89 and mental health phenotypes is weak. It is unlikely that intervening to prevent onset of allergic
90 disease will prevent poor mental health.

91 **Key words**

92 allergic disease, association, asthma, causal, atopic dermatitis, hay fever, Mendelian randomization,
93 mental health

94

95 **Abbreviations**

96 AD Atopic Dermatitis

97 CI Confidence interval

98 GWAS Genome-wide association study

99 IVW Inverse-variance weighted

100 MBE Mode-based estimate

101 MDD Major Depressive Disorder

102 MR Mendelian Randomization

103 OR Odds ratio

104 SNP Single-nucleotide polymorphism

105

106 **Introduction**

107 There is a well-documented relationship between allergic disease (including asthma, atopic
108 dermatitis (AD) and hay fever) and mental health. A recent population-based study in Taiwan
109 reported an up to 2-fold risk of allergic disease sufferers developing psychiatric disorders¹. However,
110 it is unclear whether this association is causal, or whether confounding factors, or reverse causality,
111 could explain the observed association. Prevalence of common mental health disorders and allergic
112 disease is increasing². Common mental health disorders such as anxiety and depression are some of
113 the largest contributors to the global burden of disease. Depression is currently the leading cause of
114 disability worldwide with around 4.4% of the world population suffering³, and depressive disorders
115 accounting for 44 million lost years of productive life⁴. Establishing whether there is a causal
116 relationship is therefore important, as this could highlight whether effectively treating allergic
117 disease would lead to a reduction in the burden of mental health issues (or vice versa).

118 Increased prevalence of disorders such as depression, anxiety, schizophrenia, conduct disorder, and
119 autism are observed among individuals with AD, particularly those most severely affected^{5,6}. Other
120 studies have found evidence of an association between asthma and hay fever with bipolar disorder,
121 depression and schizophrenia^{7,8}. Several hypotheses have been suggested for a causal role of allergic
122 disease on mental health; these include both psychosocial and biological mechanisms. It is possible
123 that social consequences of allergic disease, such as embarrassment due to visible lesions or itching
124 resulting from AD, or results of sleep deprivation are the driving force behind later mental health
125 issues. An alternative hypothesis is the 'inflammatory hypothesis', which suggests that the effects of
126 allergic disease on the immune system (such as disturbances in the inflammatory system or
127 increased levels of inflammatory cytokines) could contribute to the presence of mental health
128 disorders^{9,10}.

129 If these associations reflect a true causal effect of allergic disease on mental health, this could
130 suggest targets for potential intervention and prevention targets for subsequent mental health

131 problems. For example, screening, monitoring and/or early intervention among allergic disease
132 patients could reduce the risk of later bipolar disorder. If the effects do act via inflammatory
133 mechanisms, then repurposing existing treatments for inflammatory disease could be effective here.
134 Nonsteroidal anti-inflammatory drugs (NSAIDS) have been suggested to be an effective adjunct
135 therapy for bipolar disorder, however this finding remains inconclusive^{11,12}. Studies investigating the
136 progression of disease rather than onset will further inform on the effectiveness of repurposing
137 opportunities to treat current sufferers¹³.

138 We used data from the UK Biobank study to further investigate the phenotypic associations between
139 allergic disease and mental health in a population of European ancestry. We also performed two-
140 sample Mendelian randomization (MR) using summary data from relevant genome-wide association
141 studies (GWAS) to investigate the causal nature of these associations. MR is an approach that
142 enables us to infer causality using observational data. The method uses genetic variants as a proxy
143 for modifiable exposures, and subject to the instrumental variable assumptions holding, should not
144 be subject to the issues affecting conventional observational epidemiology^{14,15}. This is based on the
145 assumptions that the instrumental variable is truly associated with the exposure and not associated
146 with confounders, and also has an effect upon the outcome via the exposure and not via alternative
147 pathways¹⁴.

148 Disentangling the nature of the relationship between allergic disease and mental health could
149 enable us to focus efforts on improving intervention or prevention strategies. Whether there is a
150 causal effect of allergic disease on mental health, as suggested by previous observational studies, is
151 a critical question for intervening on the initial presentation of allergic disease to improve mental
152 health outcomes of patients.

153

154 **Methods**

155 ***Study populations***

156 Phenotypic association – UK Biobank

157 Data was available from the UK Biobank for individuals aged between 37 and 73 years¹⁶, including
158 those with asthma, AD, hay fever and the broad allergic disease phenotype (any one of asthma, AD
159 or hay fever) (Table 1). Phenotype data was also available for a number of mental health and
160 personality traits including depression, anxiety, bipolar disorder, schizophrenia, stress and
161 neuroticism. All individuals were of European ethnicity who had provided written informed consent.
162 UK Biobank is approved by the National Health Service National Research Ethics Service (ref
163 11/NW/0382; UK Biobank application number 9142).

164 *Mental health and personality phenotypes:* Self-reported measures of depression, anxiety, bipolar
165 disorder, schizophrenia and stress were derived from the non-cancer illness item asked at the first
166 assessment centre (field ID: 20002). Diagnoses of major depressive disorder (MDD) and bipolar
167 disorder were derived from responses to the mental health touchscreen questionnaire completed at
168 the first assessment centre. Neuroticism summary scores were based on 12 neurotic behaviour
169 domains as derived by Smith et al¹⁷.

170 *Allergic disease phenotypes:* Asthma, AD and hay fever phenotypes were also derived from the self-
171 reported non-cancer illness item at the first assessment centre. Participants were designated as
172 controls for the relevant phenotype if they did not report asthma, AD or hay fever based on the self-
173 reported non-cancer illness item, and if they did not report a doctor diagnosis of asthma or AD/hay
174 fever (field ID: 6152). A broad allergic disease phenotype was derived from these phenotypes,
175 participants reporting either asthma, hay fever or AD (or any combination of these phenotypes)
176 were assigned case status. Participants who did not report either asthma, AD or hay fever as
177 described for the individual phenotypes were designated as controls.

Trait	Cases / controls (prevalence)	N
Allergic disease (broad phenotype)	78,768/369,866 (17.6%)	448,634
Asthma	53,031/398,301 (11.8%)	451,332
Atopic Dermatitis	11,571/441,038 (2.6%)	452,609
Hay fever	25,471/427,220 (5.6%)	452,691

178 **Table 1 - Descriptive statistics of UK Biobank individuals with allergic disease**

179 Causal relationship - Summary GWAS data

180 Published summary GWAS results were available for the most recent GWAS for the broad allergic
181 disease phenotype (n=360,868), which had considered the existence of any one of the atopic triad
182 (asthma, AD and hay fever)¹⁸. Summary GWAS results were also available for asthma (n=127,669)¹⁹,
183 hay fever (n=38,838)²⁰, and AD (n=40,835)²¹. Similarly, published GWAS results were available for the
184 mental health outcomes investigated; major depressive disorder (MDD)²², bipolar disorder²³,
185 schizophrenia²⁴, neuroticism²⁵ and anxiety²⁶. All published results were from analyses restricted to
186 individuals of European ancestry.

187

188 ***Statistical analyses***

189 *Observational analyses*

190 Observational analyses were carried out using individual level data from UK Biobank participants to
191 investigate the phenotypic association between the allergic disease phenotypes and psychiatric
192 traits. This was performed using linear or logistic regression as appropriate while adjusting for age
193 and sex. All observational analyses were performed using Stata 15²⁷. Given the multi-testing burden,
194 we note that a global $P=0.05$ is equivalent to an individual test P -value of 0.0016 (32 tests).

195

196 *Analysis of causal relationships*

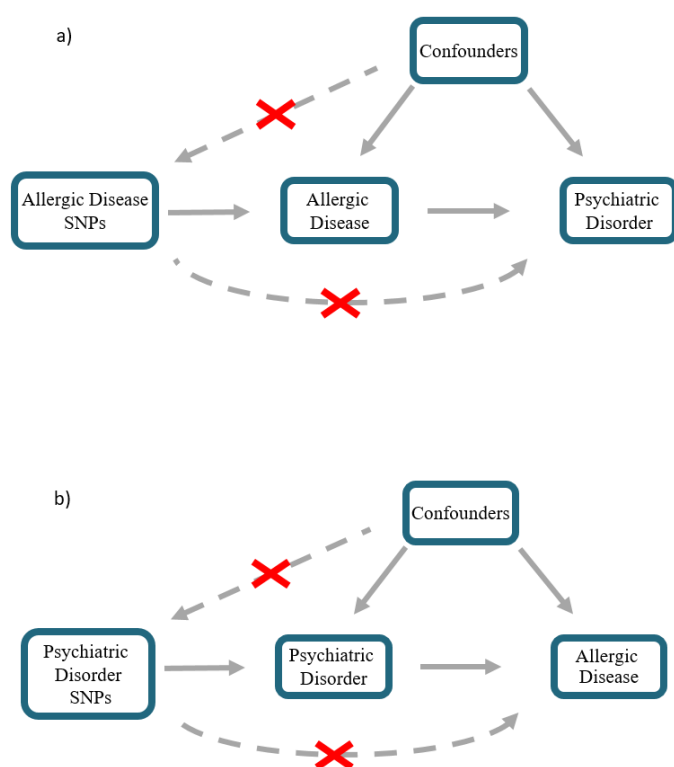
197 A genetic instrument was defined for the broad allergic disease phenotype using 89 independent (r^2
198 < 0.01) single-nucleotide polymorphisms (SNPs) from loci reported to be most strongly associated (P
199 $< 5 \times 10^{-8}$) by Ferreira and colleagues¹⁸. Genetic instruments were also defined for asthma (16 SNPs)
200 ¹⁹, AD (23 SNPs)²¹ and hay fever (37 SNPs)²⁰ using independent ($r^2 < 0.01$) SNPs associated at the
201 genome-wide significance threshold ($P < 5 \times 10^{-8}$) from the largest GWAS of these conditions (see
202 Tables E1 to E4 in the Online Repository). Effect sizes for each of these SNPs were extracted from
203 recent GWAS of each mental health phenotype to create our outcome datasets. MR was then
204 performed using the TwoSample MR R package²⁸ to determine the causal effect of allergic disease
205 liability upon the risk for mental disorders (Figure 1a). A causal estimate was obtained using the
206 inverse-variance weighted (IVW) method, which is akin to a weighted regression of the SNP-
207 outcome coefficients upon the SNP-exposure coefficients. In doing so the SNP-exposure and SNP-
208 outcome associations were combined in a meta-analysis. For ease of interpretation, the resulting
209 causal estimates were multiplied by 0.693 to represent the change in outcome per doubling odds of
210 the exposure as demonstrated by Burgess and Labreque²⁹.

211 MR analyses were also performed in the reverse direction to estimate the causal effect of liability for
212 mental health traits upon allergic disease risk (Figure 1b). Genetic instruments were derived from
213 associated independent variants ($P < 5 \times 10^{-8}$; $r^2 < 0.01$) reported for MDD (32 SNPs)²², bipolar
214 disorder (22 SNPs)²³, anxiety (5 SNPs)³⁰, schizophrenia (79 SNPs)²⁴ and neuroticism (66 SNPs)²⁵ (see
215 Tables E5 to E9 in the Online Repository).

216 *Sample overlap*

217 UK Biobank participants were included in the discovery samples for the broad allergic disease
218 phenotype, hay fever, MDD and anxiety. This sample overlap has the potential to bias causal effect
219 estimates towards the phenotypic exposure-outcome association³¹. To avoid sample overlap, we
220 generated genetic instruments for MDD (Wray et al. 2018) based on summary statistics excluding UK

221 Biobank (31 SNPs). Summary data for hay fever excluding UK Biobank was also available when hay
222 fever was the outcome²⁰. An alternative anxiety genetic instrument was also generated using SNP-
223 exposure coefficients from an older anxiety GWAS that did not include UK Biobank²⁶. We do note
224 that due to limitations of data availability, there were some analyses where sample overlap could
225 not be avoided, these being when investigating causality between the broad allergic disease and
226 neuroticism (estimated sample overlap = 42.0%) as well as for hay fever and neuroticism (estimated
227 sample overlap = 44.4%).



228
229 **Figure 1 - Schematic representation of MR analyses.** a) Allergic disease SNPs were used as genetic
230 instruments to investigate the causal effect of allergic disease liability upon various psychiatric
231 disorders and mental health outcomes. b) SNPs for various psychiatric disorders were used as
232 genetic instrument to investigate to causal effect of liability for psychiatric disorders and mental
233 health outcomes upon allergic disease. SNP = single nucleotide polymorphism

234
235 *Sensitivity analyses*

236 The causal estimate could be biased by SNPs within the genetic instrument which act through a
237 horizontally pleiotropic pathway (whereby a SNP affects the outcome by a path other than via the
238 exposure – the bottom dotted arrows in Fig 1). Various sensitivity analyses have been designed to
239 detect such pleiotropy and ensure that the assumption that instruments are only influencing the
240 outcome via the exposure is not violated. We used four sensitivity methods that all rely on different
241 assumptions to test for or account for potential pleiotropy. These are MR-Egger regression³²,
242 weighted median analysis³² and the weighted mode-based estimate (MBE)³³ and Cochran's Q
243 statistic³⁴. In addition, the Steiger directionality test was also performed to ensure that the variance
244 explained by the genetic instrument was greater in the exposure compared to the outcome³⁵.

245 All MR analyses were performed using R (www.r-project.org). The code and datasets used to carry
246 out the MR analyses are available on GitHub ([https://github.com/abudu-](https://github.com/abudu-aggrey/Allergic_Disease_Mental_Health_MR)
247 [aggrey/Allergic_Disease_Mental_Health_MR](https://github.com/abudu-aggrey/Allergic_Disease_Mental_Health_MR)).

248

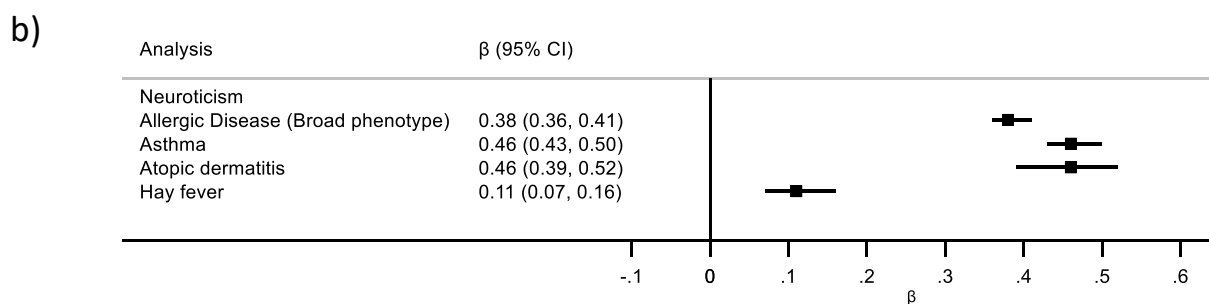
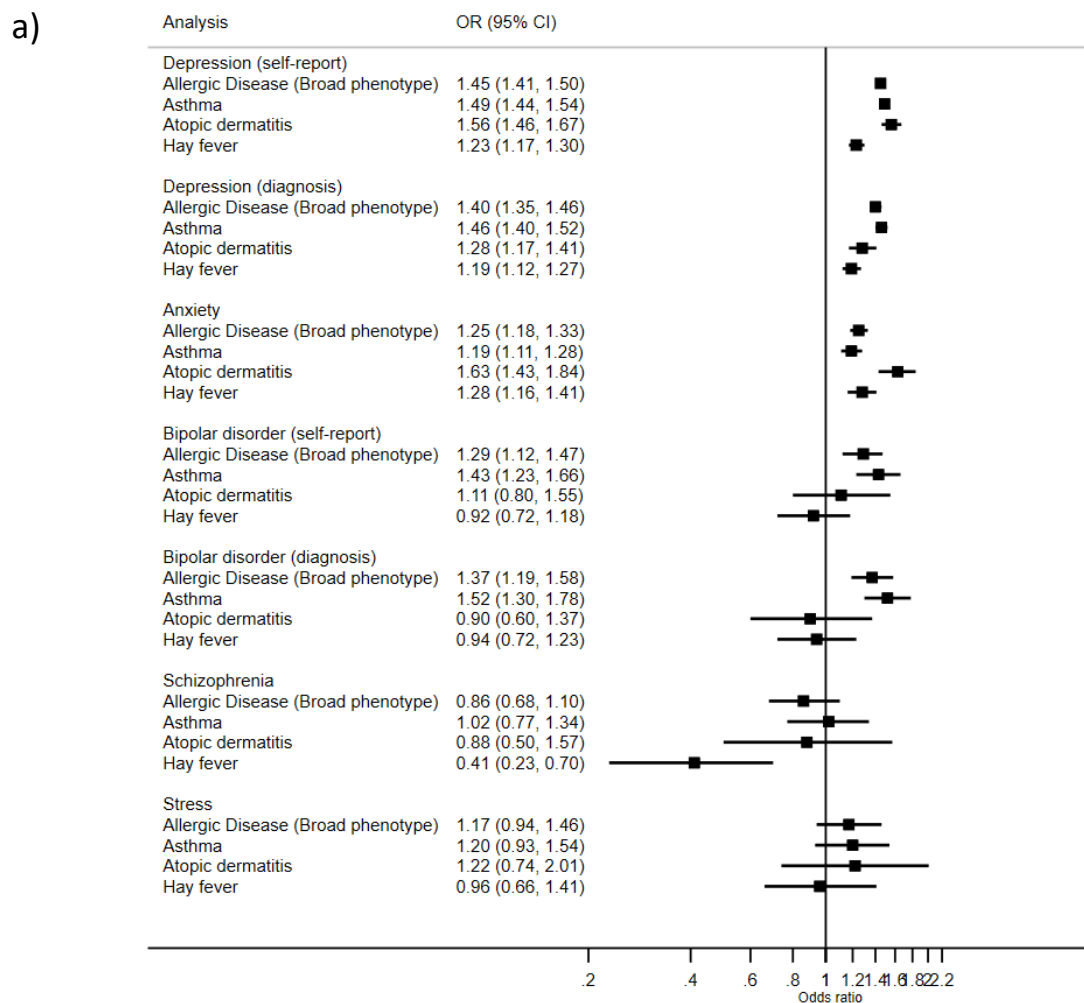
249

250 **Results**

251 **Observational analyses**

252 We found strong observational evidence for an association of the broad allergic disease phenotype
253 with both self-reported (OR = 1.45; 95% CI = 1.41, 1.50; P -value = 3.63×10^{-130}) and clinically
254 diagnosed depression (OR = 1.40; 95% CI = 1.35, 1.46; P -value = 2.63×10^{-76}) (Figure 2a). The direction
255 and magnitude of the effect estimate is consistent with that previously reported in a Taiwanese
256 population¹ suggesting an increased odds of depression in allergic disease sufferers compared to
257 non-sufferers. A strong association was also seen between depression and the individual asthma, AD
258 and hay fever phenotypes, though with different magnitudes (Figure 2a, see Table E11 in the Online
259 Repository). However, we do note that the adult prevalence of AD (5-10%)³⁶, asthma (18.2%)³⁷ and
260 hay fever (10-30%)³⁸ in the population is greater than that identified in UK Biobank (Table 1).

261 Anxiety also showed evidence for association with the broad allergic disease phenotype (OR = 1.25;
262 95% CI = 1.18, 1.33; P -value = 6.45×10^{-13}), where stronger evidence was seen with AD and weaker
263 associations with asthma and hay fever (Figure 2a, see Table E11 in the Online Repository). Bipolar
264 disorder was associated with the broad allergic disease phenotype and appeared to be driven by
265 asthma. This association was not consistent for hay fever or AD. (Figure 2a, see Table E11 in the
266 Online Repository). Of the allergic disease phenotypes investigated only hay fever showed evidence
267 of association with schizophrenia with a protective direction of effect (OR = 0.41; 95% CI = 0.23,
268 0.70; P -value = 1.36×10^{-3}) (Figure 2a, see Table E11 in the Online Repository). There was very weak
269 evidence of a phenotypic association between stress and the allergic disease phenotypes. All
270 phenotypes showed evidence of association with neuroticism, most strongly with the broad allergic
271 disease phenotype, asthma and AD (Figure 2b, see Table E11 in the Online Repository).



272

273 **Figure 2 - Phenotypic association between broad allergic disease and mental health and**

274 **personality traits**

275 a) Estimates (ORs) given for odds of mental health traits in allergic disease sufferers versus non-

276 sufferers. b) Neuroticism estimate (β) given for change in summary score in allergic disease sufferers

277 versus non-sufferers. CI, confidence interval.

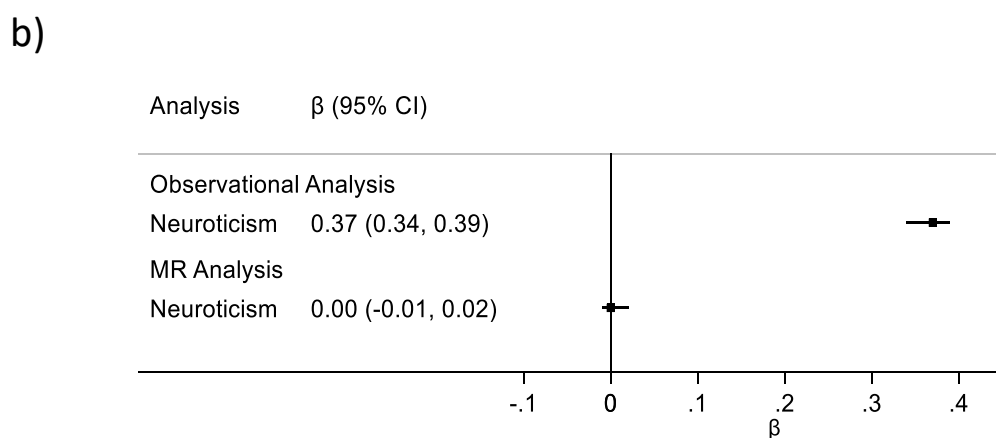
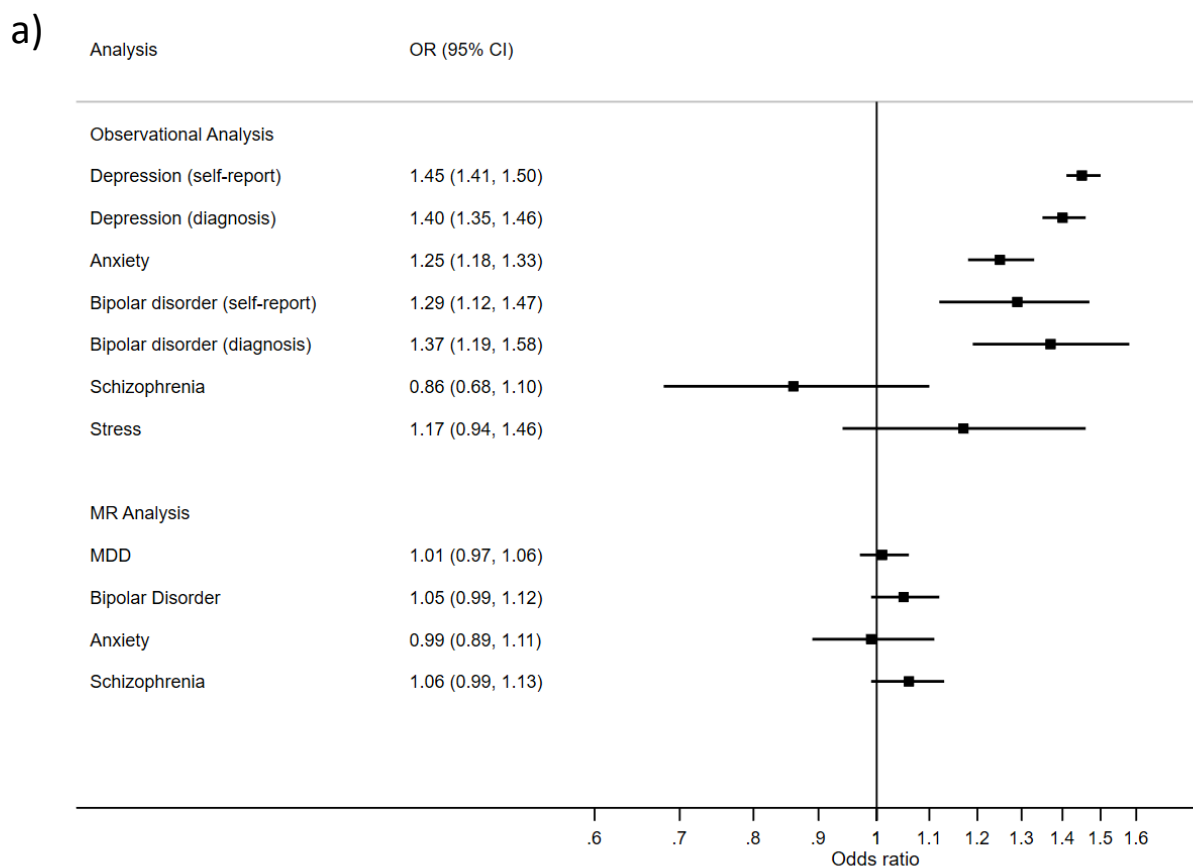
278

279 **MR analyses**

280 *Causal effect of allergic disease genetic risk upon psychiatric traits – broad phenotype*

281 Two-sample MR found little evidence that genetic liability for the broad allergic disease phenotype
282 causally increases the risk of psychiatric traits (Figure 3a, see Table E12 in the Online Repository).
283 When investigating the causal effect upon MDD risk, the MR estimate was in a consistent direction
284 with that found phenotypically (Figure 2a); however, the phenotypic associations failed to replicate
285 in the MR analysis (OR = 1.01 per doubling odds of allergic disease; 95 % CI = 0.97, 1.06; *P*-value =
286 0.51). These estimates suggest that a reduction in MDD risk > 21% or increase in risk MDD > 6%,
287 which would be clinically important effects, are unlikely. There was weak evidence that genetic
288 liability for the broad allergic disease phenotype increased the risk bipolar disorder. The direction of
289 effect was consistent with the phenotypic estimate, though the confidence intervals crossed the null
290 line (OR = 1.05; 95% CI = 0.99, 1.12; *P*-value = 0.10) (Figure 3a, see Table E12 in the Online
291 Repository), suggests a reduction in risk > 1% or increase > 12% is unlikely. The magnitude of effect
292 was also smaller than that found phenotypically.

293 When looking at the causal effects on anxiety, schizophrenia and neuroticism, the phenotypic
294 association we observed with the broad allergic disease phenotype failed to replicate, and causal
295 effect estimates were null (Figure 3).



296

297 **Figure 3 - Causal effect of broad allergic disease genetic liability upon mental health outcomes**

298 a) Observational analysis: Estimates (ORs) are given for odds of mental health outcomes in

299 individuals with the broad allergic disease phenotype versus those without. MR Analysis: Estimates

300 are given for odds of mental health outcomes per doubling odds of broad allergic disease

301 phenotype.

302 b) Observational analysis: Neuroticism estimate (β) given for change in summary score in allergic
303 disease sufferers versus non-sufferers. MR Analysis: Causal estimate given for change
304 in total neuroticism score per doubling odds of broad allergic disease phenotype. CI, confidence
305 interval

306

307 *Causal effect of allergic disease genetic risk upon psychiatric traits – individual phenotypes*

308 When assessing the individual allergic disease phenotypes, the strongest effect was found between
309 hay fever and increased risk of bipolar disorder (OR = 1.09; 95% CI = 1.00, 1.19; P -value = 0.06) (see
310 Figure E2 in the Online Repository) and effect estimates were consistent across each sensitivity
311 analysis (Figure E3 in the Online Repository). Furthermore, no variants were excluded from the hay
312 fever genetic instrument upon Steiger filtering. However, the confidence intervals did cross the null
313 line and there was some heterogeneity detected ($Q = 65$; P -value = 3.69×10^{-04}). There was little
314 evidence of a phenotypic association between hay fever and bipolar disorder, and the effects were
315 in opposing directions for self-report and diagnosis.

316 Although the strongest phenotypic association was identified between bipolar disorder and asthma,
317 we found little evidence that genetic liability for asthma influenced the risk of bipolar disorder (see
318 Figure E4 in the Online Repository) and the confidence intervals did not overlap with the phenotypic
319 estimates (OR = 1.04 per doubling odds of asthma; 95% CI = 0.98, 1.10; P -value = 0.19).

320 While anxiety and neuroticism were phenotypically associated with asthma, AD and hay fever, there
321 was little evidence that these relationships were causal in the MR analysis. The causal effect
322 estimates were close to the null and were generally not in a consistent direction to the phenotypic
323 estimates (see Figure E2, E4, E5 and E6 in the Online Repository).

324

325 *Causal effect of psychiatric disorder genetic risk upon allergic disease.*

326 We found little evidence that any of the mental health phenotypes causally affected the broad
327 allergic disease phenotype (see Table E13 in the Online Repository). There was some weak evidence
328 of a causal effect of MDD genetic risk on the broad allergic disease phenotype (OR=1.10 per doubling
329 odds of MDD; 95% CI = 0.98, 1.23; *P*-value = 0.10), however, this was of a much smaller magnitude
330 than the phenotypic association and the confidence intervals did not overlap (see Figure E7 in the
331 Online Repository). There was also weak evidence found for neuroticism genetic risk causally
332 increasing risk for the broad allergic disease phenotype (OR = 1.06 per unit change in total
333 neuroticism score; 95% CI = 1.00, 1.13; *P*-value = 0.05). This again was of a smaller magnitude and
334 had an opposite direction of effect to the phenotypic association (See Table E13 and Figure E8 in the
335 Online Repository). Furthermore, the effect estimates obtained from the sensitivity analyses were
336 not consistent in direction and there was some heterogeneity detected ($Q = 65$; *P*-value = 1.32×10^{-05})
337 (See Figure E9 in the Online Repository).

338 For the individual allergic disease phenotypes, we found some evidence for bipolar disorder genetic
339 liability having a protective effect upon hay fever (OR=0.94 per doubling odds of bipolar disorder;
340 95 % CI = 0.90, 0.99; *P*-value = 0.02) (see Figure E10 in the Online Repository); which is weaker than
341 the magnitude of effect found for hay fever genetic risk upon bipolar disorder. Estimates obtained
342 from the MR sensitivity analyses also had a protective direction of effect (see Figure E11 in the
343 Online Repository), with little evidence of horizontal pleiotropy (MR-Egger intercept = 0.03; 95% CI =
344 -0.02, 0.08; *P*-value = 0.21) or heterogeneity ($Q = 7.4$; *P* = 0.99). Steiger filtering did not exclude any
345 SNPs from the bipolar disorder instrument. However, a protective effect of bipolar disorder upon
346 hay fever was not observed in the phenotypic analysis.

347 The phenotypic associations between depression and anxiety with asthma, AD and hay fever
348 individually were not replicated in the MR analyses of mental health traits upon these allergic
349 disease phenotypes. This was also seen for the association of bipolar disorder with AD and asthma,
350 and also between schizophrenia and hay fever (see Figure E10, E12, E13 in the Online Repository).

352 **Discussion**

353 We investigated the association between allergic disease and mental health using both
354 observational multivariable adjusted regression based on UK Biobank data, and two-sample MR
355 approaches based on publicly available GWAS summary data. With the exception of schizophrenia
356 and stress, we found strong evidence of phenotypic associations between all mental health and
357 personality phenotypes investigated with the broad allergic disease phenotype, particularly with
358 depression, replicating findings previously reported in a Taiwanese population¹. We also identified
359 associations with specific allergic diseases (hay fever, AD, asthma). Anxiety and neuroticism were
360 phenotypically associated with each of the individual diseases, but the association between the
361 broad allergic disease phenotype and bipolar disorder appeared to be driven by asthma. However,
362 when using an MR approach, we found very little evidence that any of these phenotypic associations
363 were likely to be causal, and where there was evidence for this, the causal effect estimates were of a
364 much smaller magnitude. Given these results, it seems likely that the majority of phenotypic
365 associations between allergic disease and mental health are due to confounding or some other form
366 of bias. This suggests that the observed clinical co-morbidity between allergic disease and mental
367 health problems is unlikely to be causal and that intervening to prevent onset of allergic disease is
368 unlikely to directly improve mental health (and vice versa).

369 We did find some evidence of a causal effect of genetic liability for bipolar disorder upon hay fever
370 risk. However, we did not find evidence for a phenotypic association. It is interesting to note that
371 Steiger filtering gave evidence that the correct direction of causality was being tested in both
372 instances. Although evidence for a casual effect of hay fever genetic risk upon bipolar disorder was
373 weak, it is possible that this relationship acts through inflammatory mechanisms. This would support
374 the inflammatory hypothesis, where several psychiatric traits, including bipolar disorder have been
375 reported to be associated with increased inflammatory markers¹¹.

376 Although our findings suggest that there is no direct causal effect of onset of allergic disease on the
377 onset of mental health phenotypes, there is some evidence that effectively treating skin disease can
378 improve mental wellbeing³⁹. A recent report by the All-Party Parliamentary Group on Skin (APPGS)
379 has recommended that patients with a chronic skin condition should receive an annual assessment
380 of the psychological impact of their condition⁴⁰. In our study the genetic instruments we used were
381 identified in GWAS which looked at the onset of allergic disease or mental health phenotypes. In
382 primary care and trial settings, interventions often aim to improve these phenotypes rather than
383 prevent their onset, which could have different causal relationships¹³. Methods are currently being
384 developed which will enable us to investigate the causal effects of disease progression rather than
385 disease onset, such as the recent slope hunter approach proposed by Mahmood and colleagues⁴¹.
386 Future work should follow up these relationships to investigate whether interventions that aim to
387 improve allergic disease show stronger evidence of a causal effect on mental health (and vice versa).
388 Triangulating findings using both observational and MR approaches using studies with large sample
389 sizes, and across multiple contexts by comparison with published findings from international
390 cohorts, is a particular strength of this study. This enables us to compare the magnitude of effect
391 across approaches. For the majority of our analyses, the confidence intervals for the observational
392 and causal effect estimates did not overlap, indicating that any causal effect of allergic disease is
393 likely to be much smaller than the phenotypic estimates suggest. Although we did not find strong
394 evidence for a clinically relevant causal effect of allergic disease on mental health (or vice versa), the
395 MR estimates particularly for the allergic disease exposures are precise, enabling us to estimate the
396 maximum causal effect we are likely to see. In addition, investigating both the broad allergic disease
397 phenotype and separating out the specific effects of asthma/AD/hay fever, enabled us to determine
398 whether the relationship is driven by certain phenotypes.

399 There are some limitations to this study that should be considered. First, the available instruments
400 for the mental health phenotypes were weaker than those used for the allergic disease phenotypes.

401 It is therefore difficult to rule out bidirectional effects that were not uncovered, as it is possible that
402 we did not have enough power to detect causal effects of mental health and personality on allergic
403 disease. Second, although the evidence was strongest for the causal effect of bipolar disorder
404 genetic liability upon hay fever, after accounting for multiple testing using a Bonferroni correction,
405 none of the MR analyses passed the suggested threshold ($P < 1.25 \times 10^{-3}$). However, this approach is
406 likely overly conservative given the correlation between our phenotypes. Third, the UK Biobank
407 phenotypes used within this study were predominantly self-reported, which could increase the
408 potential for misreporting. However, where possible we repeated the observational analysis using
409 mental health diagnoses, and the results were consistent. Fourth, there was some sample overlap in
410 our MR analyses of neuroticism and both the broad allergic disease and hay fever phenotype, due to
411 the inclusion of UK Biobank in both GWAS. Sample overlap can bias the causal estimate towards the
412 phenotypic exposure-outcome association³¹, however our MR estimates for these associations were
413 null so this was not an issue. Fifth, the results from this study may not be generalisable across
414 populations. Both the observational data and the publicly available GWAS data used for the MR used
415 data from predominantly white European samples in adulthood. More diverse GWAS are required to
416 improve transferability of results across populations and age groups⁴². Finally, it is important to note
417 that here we only estimate the effects of genetic liability to a particular phenotype, not the effect of
418 developing the phenotype²⁹. It is therefore possible that getting specific allergic disease or mental
419 health phenotypes could have different effects to those reported here.

420 In conclusion, few of the observed associations between allergic disease and mental health were
421 replicated. The causal effect we did identify appears to be much lower in magnitude than that
422 suggested observationally. This suggests that the majority of co-incidence observed clinically is
423 unlikely to be causal. Therefore, intervening to prevent onset of allergic disease is unlikely to directly
424 prevent the onset of mental ill-health. But future work should aim to investigate whether
425 interventions that aim to improve allergic disease have a causal effect on mental health (and vice
426 versa).

427 **Acknowledgements**

428 This research has been conducted using the UK Biobank Resource under Application Number 9142.
429 Details of patient and public involvement in the UK Biobank are available online
430 (<http://www.ukbiobank.ac.uk/about-biobank-uk/> and [https://www.ukbiobank.ac.uk/wp-](https://www.ukbiobank.ac.uk/wp-content/uploads/2011/07/Summary-EGF-consultation.pdf)
431 [content/uploads/2011/07/Summary-EGF-consultation.pdf](https://www.ukbiobank.ac.uk/wp-content/uploads/2011/07/Summary-EGF-consultation.pdf)). No patients were specifically involved in
432 setting the research question or the outcome measures, nor were they involved in developing plans
433 for recruitment, design, or implementation of this study. No patients were asked to advise on
434 interpretation or writing up of results. There are no specific plans to disseminate the results of the
435 research to study participants, but the UK Biobank disseminates key findings from projects on its
436 website.

437

438 **Contributors**

439 AB-A, SJB, LP and HS conceived the study concept. AB-A and HS managed the project. SJ, AB-A and
440 HS performed the statistical analysis. SJ, AB-A, SJB, LP and HS drafted the manuscript. All authors
441 were involved in the interpretation of the data and contributed to and approved the final version of
442 the manuscript.

443

444 **Data sharing**

445 The UK Biobank dataset used to conduct the research in this paper is available via application
446 directly to the UK Biobank. Applications are assessed for meeting the required criteria for access,
447 including legal and ethics standards. More information regarding data access can be found here:
448 <http://www.ukbiobank.ac.uk/scientists-3/>. The code and datasets used to carry out the MR analyses
449 are available on GitHub (https://github.com/abudu-aggrey/Allergic_Disease_Mental_Health_MR).

450

451 **References**

- 452 1. Tzeng NS, Chang HA, Chung CH, Kao YC, Chang CC, Yeh HW, Chiang WS, Chou YC, Chang SY,
453 Chien WC. Increased risk of psychiatric disorders in allergic diseases: A nationwide,
454 population-based, cohort study. *Front Psychiatry*. 2018;9(APR):133.
- 455 2. Pawankar R. Allergic diseases and asthma: A global public health concern and a call to action.
456 *World Allergy Organ J*. 2014;7(1):12.
- 457 3. Friedrich MJ. Depression Is the Leading Cause of Disability Around the World. *JAMA*.
458 2017;317(15):1517.
- 459 4. GBD. Global Burden of Disease Study 2016 (GBD 2016) Data Resources | GHDx. *Ihme*.
460 2016;2016(Gbd 2016):1-2.
- 461 5. Yaghmaie P, Koudelka CW, Simpson EL. Mental health comorbidity in patients with atopic
462 dermatitis. *J Allergy Clin Immunol*. 2013;131(2):428-433.
- 463 6. Wang W-C, Lu M-L, Chen VC-H, Ng M-H, Huang K-Y, Hsieh M-H, Hsieh M-J, McIntyre RS, Lee Y,
464 Lee CT-C. Asthma, corticosteroid use and schizophrenia: A nationwide population-based
465 study in Taiwan. Wu P-H, ed. *PLoS One*. 2017;12(3):e0173063.
- 466 7. Lin TC, Lee CTC, Lai TJ, Lee C Te, Lee KY, Chen VCH, Stewart R. Association of asthma and
467 bipolar disorder: A nationwide population-based study in Taiwan. *J Affect Disord*.
468 2014;168:30-36.
- 469 8. Chen YH, Lee HC, Lin HC. Prevalence and risk of atopic disorders among schizophrenia
470 patients: A nationwide population based study. *Schizophr Res*. 2009;108(1-3):191-196.
- 471 9. Dunn AJ, Swiergiel AH, De Beaurepaire R. Cytokines as mediators of depression: What can we
472 learn from animal studies? *Neurosci Biobehav Rev*. 2005;29(4-5):891-909.
- 473 10. Smith RS. The macrophage theory of depression. *Med Hypotheses*. 1991;35(4):298-306.

- 474 11. Martone G. *The Inflammation Hypothesis and Mental Illness*. Vol 2. Pulsus Group; 2019.
- 475 12. Köhler-Forsberg O, Sylvia L, Thase M, Calabrese JR, Deckersbach T, Tohen M, Bowden CL,
476 McInnis M, Kocsis JH, Friedman ES, Ketter TA, McElroy S, Shelton RC, Nierenberg AA.
477 Nonsteroidal anti-inflammatory drugs (NSAIDs) and paracetamol do not affect 6-month
478 mood-stabilizing treatment outcome among 482 patients with bipolar disorder. *Depress*
479 *Anxiety*. 2017;34(3):281-290.
- 480 13. Paternoster L, Tilling K, Davey Smith G. Genetic epidemiology and Mendelian randomization
481 for informing disease therapeutics: Conceptual and methodological challenges. Barsh GS, ed.
482 *PLoS Genet*. 2017;13(10):e1006944.
- 483 14. Lawlor DA, Harbord RM, Sterne JAC, Timpson N, Davey Smith G. Mendelian randomization:
484 using genes as instruments for making causal inferences in epidemiology. *Stat Med*.
485 2008;27(8):1133-1163.
- 486 15. Davey Smith G, Ebrahim S. What can mendelian randomisation tell us about modifiable
487 behavioural and environmental exposures? *BMJ*. 2005;330(7499):1076-1079.
- 488 16. Sudlow C, Gallacher J, Allen N, Beral V, Burton P, Danesh J, Downey P, Elliott P, Green J,
489 Landray M, Liu B, Matthews P, Ong G, Pell J, Silman A, Young A, Sprosen T, Peakman T, Collins
490 R, et al. UK Biobank: An open access resource for identifying the causes of a wide range of
491 complex diseases of middle and old age. *PLOS Med*. 2015;12(3):e1001779.
- 492 17. Smith DJ, Nicholl BI, Cullen B, Martin D, Ul-Haq Z, Evans J, Gill JMR, Roberts B, Gallacher J,
493 Mackay D, Hotopf M, Deary I, Craddock N, Pell JP. Prevalence and Characteristics of Probable
494 Major Depression and Bipolar Disorder within UK Biobank: Cross-Sectional Study of 172,751
495 Participants. *PLoS One*. 2013;8(11):e75362.
- 496 18. Ferreira MA, Vonk JM, Baurecht H, Marenholz I, Tian C, Hoffman JD, Helmer Q, Tillander A,
497 Ullemar V, van Dongen J, Lu Y, Rüschenhoff F, Esparza-Gordillo J, Medway CW, Mountjoy E,

- 498 Burrows K, Hummel O, Grosche S, Brumpton BM, et al. Shared genetic origin of asthma, hay
499 fever and eczema elucidates allergic disease biology. *Nat Genet*. Published online October
500 2017.
- 501 19. Demenais F, Margaritte-Jeannin P, Barnes KC, Cookson WOC, Altmüller J, Ang W, Barr RG,
502 Beaty TH, Becker AB, Beilby J, Bisgaard H, Bjornsdottir US, Bleecker E, Bønnelykke K,
503 Boomsma DI, Bouzigon E, Brightling CE, Brossard M, Brusselle GG, et al. Multiancestry
504 association study identifies new asthma risk loci that colocalize with immune-cell enhancer
505 marks. *Nat Genet*. 2018;50(1):42-53.
- 506 20. Waage J, Standl M, Curtin JA, Jessen LE, Thorsen J, Tian C, Schoettler N, Flores C, Abdellaoui
507 A, Ahluwalia TS, Alves AC, Amaral AFS, Antó JM, Arnold A, Barreto-Luis A, Baurecht H, van
508 Beijsterveldt CEM, Bleecker ER, Bonàs-Guarch S, et al. Genome-wide association and HLA
509 fine-mapping studies identify risk loci and genetic pathways underlying allergic rhinitis. *Nat*
510 *Genet*. 2018;50(8):1072-1080.
- 511 21. Paternoster L, Standl M, Waage J, Baurecht H, Hotze M, Strachan DP, Curtin JA, Bønnelykke K,
512 Tian C, Takahashi A, Esparza-Gordillo J, Alves AC, Thyssen JP, den Dekker HT, Ferreira MA,
513 Altmaier E, Sleiman PMA, Xiao FL, Gonzalez JR, et al. Multi-ancestry genome-wide association
514 study of 21,000 cases and 95,000 controls identifies new risk loci for atopic dermatitis. *Nat*
515 *Genet*. 2015;47(12):1449-1456.
- 516 22. Wray NR, Ripke S, Mattheisen M, Trzaskowski M, Byrne EM, Abdellaoui A, Adams MJ, Agerbo
517 E, Air TM, Andlauer TMF, Bacanu S-A, Bækvad-Hansen M, Beekman AFT, Bigdeli TB, Binder
518 EB, Blackwood DRH, Bryois J, Buttenschøn HN, Bybjerg-Grauholm J, et al. Genome-wide
519 association analyses identify 44 risk variants and refine the genetic architecture of major
520 depression. *Nat Genet*. 2018;50(5):668-681.
- 521 23. Stahl EA, Breen G, Forstner AJ, McQuillin A, Ripke S, Trubetskoy V, Mattheisen M, Wang Y,

- 522 Coleman JRI, Gaspar HA, de Leeuw CA, Steinberg S, Pavlides JMW, Trzaskowski M, Byrne EM,
523 Pers TH, Holmans PA, Richards AL, Abbott L, et al. Genome-wide association study identifies
524 30 loci associated with bipolar disorder. *Nat Genet.* 2019;51(5):793-803.
- 525 24. Ripke S, Neale BM, Corvin A, Walters JTR, Farh KH, Holmans PA, Lee P, Bulik-Sullivan B, Collier
526 DA, Huang H, Pers TH, Agartz I, Agerbo E, Albus M, Alexander M, Amin F, Bacanu SA,
527 Begemann M, Belliveau RA, et al. Biological insights from 108 schizophrenia-associated
528 genetic loci. *Nature.* 2014;511(7510):421-427.
- 529 25. Luciano M, Hagenaars SP, Davies G, Hill WD, Clarke T-K, Shireh M, Harris SE, Marioni RE,
530 Liewald DC, Fawns-Ritchie C, Adams MJ, Howard DM, Lewis CM, Gale CR, McIntosh AM,
531 Deary IJ. Association analysis in over 329,000 individuals identifies 116 independent variants
532 influencing neuroticism. *Nat Genet.* 2018;50(1):6-11.
- 533 26. Otowa T, Hek K, Lee M, Byrne EM, Mirza SS, Nivard MG, Bigdeli T, Aggen SH, Adkins D, Wolen
534 A, Fanous A, Keller MC, Castelao E, Kutalik Z, Der Auwera S V., Homuth G, Nauck M, Teumer
535 A, Milaneschi Y, et al. Meta-analysis of genome-wide association studies of anxiety disorders.
536 *Mol Psychiatry.* 2016;21(10):1391-1399.
- 537 27. College Station TSL. *StataCorp. 2017.; 2017.*
- 538 28. Hemani G, Zheng J, Elsworth B, Wade KH, Haberland V, Baird D, Laurin C, Burgess S, Bowden
539 J, Langdon R, Tan VY, Yarmolinsky J, Shihab HA, Timpson NJ, Evans DM, Relton C, Martin RM,
540 Davey Smith G, Gaunt TR, et al. The MR-base platform supports systematic causal inference
541 across the human phenome. *Elife.* 2018;7.
- 542 29. Burgess S, Labrecque JA. Mendelian randomization with a binary exposure variable:
543 interpretation and presentation of causal estimates. *Eur J Epidemiol.* 2018;33(10):947-952.
- 544 30. Purves KL, Coleman JRI, Meier SM, Rayner C, Davis KAS, Cheesman R, Bækvad-Hansen M,
545 Børghlum AD, Wan Cho S, Jürgen Deckert J, Gaspar HA, Bybjerg-Grauholm J, Hetttema JM,

- 546 Hotopf M, Hougaard D, Hübel C, Kan C, McIntosh AM, Mors O, et al. A major role for common
547 genetic variation in anxiety disorders. *Mol Psychiatry*. Published online November 20, 2019:1-
548 12.
- 549 31. Burgess S, Davies NM, Thompson SG. Bias due to participant overlap in two-sample
550 Mendelian randomization. *Genet Epidemiol*. 2016;40(7):597-608.
- 551 32. Bowden J, Davey Smith G, Haycock PC, Burgess S. Consistent Estimation in Mendelian
552 Randomization with Some Invalid Instruments Using a Weighted Median Estimator. *Genet*
553 *Epidemiol*. 2016;40(4):304-314.
- 554 33. Hartwig FP, Smith GD, Bowden J. Robust inference in summary data Mendelian
555 randomization via the zero modal pleiotropy assumption. *Int J Epidemiol*. 2017;46(6):1985-
556 1998.
- 557 34. Bowden J, Fabiola Del Greco M, Minelli C, Smith GD, Sheehan NA, Thompson JR. Assessing
558 the suitability of summary data for two-sample mendelian randomization analyses using MR-
559 Egger regression: The role of the I² statistic. *Int J Epidemiol*. 2016;45(6):1961-1974.
- 560 35. Hemani G, Tilling K, Davey Smith G. Orienting the causal relationship between imprecisely
561 measured traits using GWAS summary data. Li J, ed. *PLOS Genet*. 2017;13(11):e1007081.
- 562 36. Weidinger S, Novak N. Atopic dermatitis. *Lancet*. 2016;387(10023):1109-1122.
- 563 37. To T, Stanojevic S, Moores G, Gershon AS, Bateman ED, Cruz AA, Boulet LP. Global asthma
564 prevalence in adults: Findings from the cross-sectional world health survey. *BMC Public*
565 *Health*. Published online 2012.
- 566 38. Pawankar R, Canonica G, Holgate S, Lockey R. WAO white book on allergy : update 2013.
567 *Pediatrriya*. Published online 2013.
- 568 39. Hedman-Lagerlöf E, Bergman A, Lindefors N, Bradley M. Exposure-based cognitive behavior

- 569 therapy for atopic dermatitis: an open trial. *Cogn Behav Ther.* 2019;48(4):300-310.
- 570 40. All-Party Parliamentary Group on Skin. *Mental Health and Skin Disease.*; 2020.
- 571 41. Mahmoud O, Dudbridge F, Smith GD, Munafo M, Tilling K. Slope-Hunter: A robust method for
572 index-event bias correction in genome-wide association studies of subsequent traits. *bioRxiv.*
573 Published online January 1, 2020:2020.01.31.928077.
- 574 42. Mills MC, Rahal C. The GWAS Diversity Monitor tracks diversity by disease in real time. *Nat*
575 *Genet.* 2020;52(3):242-243.
- 576
- 577