

26 **Abstract:**

27 In an older cohort of veterans with a high comorbidity burden, age was the largest predictor of
28 hospitalization, peak disease severity, and mortality. Most infections in six New England states
29 until September, 2020, were from SARS-CoV-2 B.1 lineage, dominated by spike protein D614G
30 substitution in 97.3% of samples.

31 **Keywords:** COVID-19, Veterans, Age, SARS-CoV-2, Variant

32

33 **Background**

34 Disease severity and outcomes of Coronavirus Disease 2019 (COVID-19) caused by
35 Severe Acute Respiratory Syndrome Coronavirus-2 (SARS-CoV-2) vary among individuals who
36 become infected, with several factors that have been suggested as predictors of mortality,
37 including Charlson comorbidity index score, age, and body mass index (BMI) [2-6]. Virologic
38 characteristics have also been suggested to impact the severity of disease, and concern has been
39 raised about several variants being more transmissible or more lethal [7,8,9,10]. A dynamic
40 nomenclature system (Pangolin) was developed to classify SARS-CoV-2 and identify lineages
41 and mutations that could impact infectivity and virulence [11]. Understanding viral epidemiology
42 and a regional evaluation of viral variants, with their respective clinical correlations, is important
43 to provide a full understanding of the disease.

44 Given the high variability and conflicting data in predicting who will have poor
45 outcomes, assessment of specific populations is necessary to give providers the best clinical
46 picture on their patients. Clinical outcomes of veterans with COVID-19 in New England and
47 respective SARS-CoV-2 genomics have not been described. We aimed to (1) describe patient
48 characteristics, comorbidities, and disease factors that impact patient outcomes and (2) present
49 data on the genomic composition of the SARS-CoV-2 infecting these patients.

50

51 **Study Design**

52 Our cohort was composed of all veterans receiving care at Veterans Administration (VA)
53 healthcare centers in six New England states (Connecticut, Massachusetts, Maine, New
54 Hampshire, Rhode Island, Vermont) who tested positive for COVID-19 from April 8, 2020, to
55 September 16, 2020. Inclusion criteria included patients with accessible chart records and a

56 diagnosis of COVID-19 based on one of three tests: Xpert[®] Xpress SARS-CoV-2 (Cepheid),
57 Simplexa[®] COVID-19 Direct Kit (DiaSorin), and Roche cobas[®] 6800 system. We manually
58 reviewed charts and recorded demographics [age, gender, race, body-mass index (BMI), long-
59 term care facility (LTC) status, and state of residence when diagnosed with COVID-19].
60 Comorbidities recorded were immunosuppression, dementia, diabetes mellitus, chronic kidney
61 disease stage ≥ 3 , chronic liver disease, coronary artery disease (CAD), heart failure, atrial
62 fibrillation, chronic obstructive pulmonary disease, asthma, and active tobacco use. Clinical
63 database and Viral RNA repositories were created and approved by VA Connecticut Institutional
64 Review Board. Whole genome sequencing was conducted on SARS-CoV-2 isolates with a cycle
65 threshold (Ct) value <36 , and provided near-complete or complete genome results where Ct
66 value was <30 .

67 We recorded hospitalization status, mortality, and oxygen (O₂)-requirement within 24
68 hours of admission. We divided patients based on their peak disease severity into five categories
69 depending on oxygenation requirements: 1) no O₂-requirement, 2) 1-3 liters (L) by nasal cannula
70 (NC), 3) 4-6 L NC, 4) >6 L O₂ or non-invasive positive pressure ventilation, and 5) mechanical
71 ventilation. We used STATA v16 for univariate and multivariate logistic regressions to predict
72 the outcomes of interest.

73 We sequenced whole virus genomes ($\geq 20\times$ coverage depth across $\geq 70\%$ of the genome)
74 using Illumina (n = 238) and Nanopore (n = 61) platforms. Using BWA-MEM version 0.7.15,
75 we aligned reads to the Wuhan-Hu-1 reference genomes (GenBank MN908937.3). With iVar
76 v1.2.1, we trimmed sequencing adaptors and primer sequences and called bases by simple
77 majority ($>50\%$ frequency) at each site to generate consensus genomes. An ambiguous N was
78 used when < 10 reads were present at a site. We aligned consensus genomes with MAFFT [12],

79 and masked problematic sites [13]. We built a phylogenetic tree with IQTree [14] using an HKY
80 substitution model and 1000 bootstraps, visualized it with Python module baltic v0.1.5, and
81 assigned lineages with Pangolin [11].

82

83 **Results**

84 Of 476 veterans in six New England states with confirmed SARS-CoV-2 during the study
85 period, 274 had complete and accessible charts. Of 274 veterans, 92.7% were men, 83.2% White,
86 and mean age was 63 years (standard deviation: 17.6 years) and over a third resided in LTC
87 (n=92) (Supplementary Table 1). The most common comorbidities were CAD (27%), diabetes
88 (25%), and tobacco use (23%).

89 Notably, 11.7% patients required O₂ above their baseline home O₂-requirement within
90 24 hours of admission, and 20.8% of all patients required O₂ support at some point during
91 hospitalization. In terms of peak severity, 78.5% required only room air, 10.9% required 1-3 L
92 O₂, 4.0% required 4-6 L O₂, 3.6% required >6L O₂ or NIPPV, and 2.2% were intubated. The
93 hospitalization rate was 28.8% (Supplementary Figure 1), and overall mortality rate was 10.6%
94 (Supplementary Figure 2).

95 Univariate regression analysis results are reported in Table 1. In multivariate regression,
96 significant predictors of hospitalization were age (OR: 1.05) and non-White race (OR: 2.39)
97 (Table 3). Peak severity also varied by age (OR: 1.07) and O₂ requirement on admission (OR:
98 45.7). Mortality was predicted by age (OR: 1.06), dementia (OR:3.44), and O₂ requirement on
99 admission (OR: 6.74). In other words, for every year increase in age, the odds of hospitalization
100 increased by 5%, peak severity increased by 7%, and mortality increased by 6%.

101 For the genomic characteristics, amongst the 426 patients, 299 patients' genomes had
102 adequate coverage for analysis. We found the majority of our specimens (51.5%) were from
103 SARS-CoV-2 lineage B.1, or a sub-lineage of B.1 (e.g. B.1.302, B.1.303, B.1.356; 137/299,
104 45.8%), all of which are defined by D614G substitution (Figure 1, Supplementary Table 2). Only
105 2.4% were from the lineage A that lack the D614G mutation. There were 41 SARS-CoV-2
106 lineages detected in our cohort, and we did not have the power to test for clinical correlates. Our
107 sequencing data does inform us that the outcomes presented in this VA cohort are dominated by
108 the impacts of the B lineage D614G mutation.

109

110 **Discussion**

111 Our study found that in an older cohort of veterans with a high comorbidity burden, age
112 significantly associated with risk of hospitalization, peak disease severity, and mortality. The
113 CDC provides a list of chronic medical conditions that predispose individuals to severe illness
114 from SARS-CoV-2 infection [15], but >75% of United States adults fall under a high-risk
115 category [16]. Veterans are a unique cohort because of advanced age on average, and more
116 comorbidities. Understanding clinical factors that impact outcomes in veterans will help
117 clinicians risk-stratify patients with similar demographic profiles.

118 Many COVID-19 studies have found age to be a predictor of worse outcomes [4,17-20].
119 In our study, age was a significant predictor for all of our outcomes and was a confounder for
120 other variables. Interestingly, LTC status predicted all three of our outcomes on univariate
121 analysis, but not on multivariate analyses. Earlier in the COVID-19 pandemic, residents of
122 nursing homes had higher rates of infection as well as severe illness and mortality [21]. Our

123 study shows that among veterans in LTC facility, disease outcomes were not impacted by their
124 residence status.

125 Concurrent work from our group suggests that O2-requirement within 24 hours of
126 admission predicts poor outcomes in veterans, which has helped inform the triage guidelines at
127 our healthcare system. This is an important finding because other ways of determining
128 oxygenation status can frequently change, and thus become difficult for clinicians to use in
129 practice [22].

130 Our study supports data from previous reports that non-White patients are at increased
131 risk of hospitalization but have similar peak severity and mortality outcomes [23-26]. Many
132 studies have shown that minorities often have delays in seeking care, causing higher risk of
133 hospitalization when they do seek care [27,28]. This may explain the outcomes in our study. It is
134 critical to continue ongoing efforts to combat medical inequities and target prevention efforts and
135 education to communities and racial groups most affected by COVID-19.

136 After adjusting for age and other comorbidities, we found that patients with dementia had
137 a higher risk of death. This is similar to other studies on patients with COVID-19 and dementia
138 [18, 29-31]. This may be explained by a host of biological factors, but it emphasizes the
139 importance of extra care and monitoring required when approaching a patient with dementia.

140 Limitations of this work include the smaller sample size. Furthermore, our study is
141 specific to veterans, which is a largely male and older cohort, and results may not therefore be
142 generalizable. The time period of this study was prior to established medical therapies for
143 COVID-19 and our outcomes reported are likely worse than expected today. Strengths of our
144 study include its comprehensive scope, wide geographic range, manual chart review allowing for

145 the capturing of all comorbidities and oxygenation parameters that may not be available
146 otherwise in a database, and multivariate analysis of many potential risk factors.

147

148 **Conclusion**

149 Our study found that in an older cohort of veterans from the six New England states with
150 a high comorbidity burden, age was the single strongest predictor of hospitalization, peak
151 severity, and mortality. Non-white veterans were more likely to be hospitalized, and patients who
152 required oxygen on admission were more likely to have severe disease and higher rates of
153 mortality. Furthermore, patients with dementia were more likely to die. Multiple genomic
154 variants of SARS-CoV-2 were distributed in patients in New England early in the COVID-19
155 era, mostly from a B.1 sub-lineage with the spike D614G mutation.

156

157 **Acknowledgements:** N.D.G. is a paid consultant of Tempus labs for infectious disease

158 genomics. The other authors report no conflicts of interest.

159 **Funding:** This work was supported by Centers for Disease Control and Prevention [BAA

160 75D301-20-R-68024 to N.D.G. and S.G.] and the Yale Center for Clinical Investigation TL1

161 TR001864 (M.E.P.).

162

163

164

165

166

167

168

169

170

171

172

173

174

175

176

177

178

179

180
181
182
183
184
185
186
187
188
189
190
191
192
193
194
195
196
197
198
199
200
201
202
203
204
205
206
207
208
209
210
211
212
213
214
215
216
217
218
219
220
221
222
223
224
225

Literature Cited

1. U.S. Department of Health & Human Services. Published COVID Data Tracker. Accessed May 25, 2021.
2. Simonnet A, Chetboun M, Poissy J, et al. High Prevalence of Obesity in Severe Acute Respiratory Syndrome Coronavirus-2 (SARS-CoV-2) Requiring Invasive Mechanical Ventilation. *Obesity (Silver Spring)*. 2020;28(7):1195-1199.
3. Garg S, Kim L, Whitaker M, et al. Hospitalization Rates and Characteristics of Patients Hospitalized with Laboratory-Confirmed Coronavirus Disease 2019 - COVID-NET, 14 States, March 1-30, 2020. *MMWR Morb Mortal Wkly Rep*. 2020;69(15):458-464.
4. Ioannou GN, Locke E, Green P, et al. Risk Factors for Hospitalization, Mechanical Ventilation, or Death Among 10 131 US Veterans With SARS-CoV-2 Infection. *JAMA Netw Open*. 2020;3(9):e2022310.
5. Richardson S, Hirsch JS, Narasimhan M, et al. Presenting Characteristics, Comorbidities, and Outcomes Among 5700 Patients Hospitalized With COVID-19 in the New York City Area. *Jama*. 2020;323(20):2052-2059.
6. Wu C, Chen X, Cai Y, et al. Risk Factors Associated With Acute Respiratory Distress Syndrome and Death in Patients With Coronavirus Disease 2019 Pneumonia in Wuhan, China. *JAMA Intern Med*. 2020;180(7):934-943.
7. Brufsky A. Distinct viral clades of SARS-CoV-2: Implications for modeling of viral spread. *Journal of Medical Virology*. 2020;92(9):1386-1390.
8. Korber B, Fischer WM, Gnanakaran S, et al. Tracking Changes in SARS-CoV-2 Spike: Evidence that D614G Increases Infectivity of the COVID-19 Virus. *Cell*. 2020;182(4):812-827.e819.
9. Lorenzo-Redondo R, Nam HH, Roberts SC, et al. A clade of SARS-CoV-2 viruses associated with lower viral loads in patient upper airways. *EBioMedicine*. 2020;62.
10. Davies NG, Jarvis CI, Edmunds WJ, Jewell NP, Diaz-Ordaz K, Keogh RH. Increased mortality in community-tested cases of SARS-CoV-2 lineage B.1.1.7. *Nature*. 2021.
11. Rambaut A, Holmes EC, O'Toole Á, et al. A dynamic nomenclature proposal for SARS-CoV-2 lineages to assist genomic epidemiology. *Nature Microbiology*. 2020;5(11):1403-1407.
12. Katoh K, Standley DM. MAFFT Multiple Sequence Alignment Software Version 7: Improvements in Performance and Usability. *Molecular Biology and Evolution*. 2013;30(4):772-780.
13. Nicola De Maio* CW, Rui Borges, Lukas Weilguny, Greg Slodkowitz, Nick Goldman. Masking strategies for SARS-CoV-2 alignments. <https://virological.org/t/masking-strategies-for-sars-cov-2-alignments/480>. Published 2020. Accessed April 9, 2021.
14. Minh BQ, Schmidt HA, Chernomor O, et al. IQ-TREE 2: New Models and Efficient Methods for Phylogenetic Inference in the Genomic Era. *Molecular Biology and Evolution*. 2020;37(5):1530-1534.
15. CDC COVID-19 Guidance for Healthcare Professionals. Underlying Medical Conditions. Updated May 13, 2021. https://www.cdc.gov/coronavirus/2019-ncov/hcp/clinical-care/underlyingconditions.html#ref_
16. Ajufu E, Rao S, Navar AM, Pandey A, Ayers CR, Khera A. U.S. population at increased risk of severe illness from COVID-19. *Am J Prev Cardiol*. 2021;6:100156-100156.

- 226 17. Docherty AB, Harrison EM, Green CA, et al. Features of 20 133 UK patients in hospital
227 with covid-19 using the ISARIC WHO Clinical Characterisation Protocol: prospective
228 observational cohort study. *BMJ*. 2020;369:m1985-m1985.
- 229 18. Giorgi Rossi P, Marino M, Formisano D, et al. Characteristics and outcomes of a cohort
230 of COVID-19 patients in the Province of Reggio Emilia, Italy. *PLoS One*.
231 2020;15(8):e0238281-e0238281.
- 232 19. Kim L, Garg S, O'Halloran A, et al. Risk Factors for Intensive Care Unit Admission and
233 In-hospital Mortality among Hospitalized Adults Identified through the U.S. Coronavirus
234 Disease 2019 (COVID-19)-Associated Hospitalization Surveillance Network (COVID-
235 NET). *Clin Infect Dis*. 2020:ciaa1012.
- 236 20. Williamson EJ, Walker AJ, Bhaskaran K, et al. Factors associated with COVID-19-
237 related death using OpenSAFELY. *Nature*. 2020;584(7821):430-436.
- 238 21. Bagchi S MJ, Li Q, et al. *MMWR Morb Mortal Wkly Rep* 2021. Rates of COVID-19
239 Among Residents and Staff Members in Nursing Homes —United States, May 25–
240 November 22, 2020;70:52–55.
- 241 22. Garibaldi BT, Fiksel J, Muschelli J, et al. Patient Trajectories Among Persons
242 Hospitalized for COVID-19 : A Cohort Study. *Ann Intern Med*. 2021;174(1):33-41.
- 243 23. Cardemil CV, Dahl R, Prill MM, et al. COVID-19-Related Hospitalization Rates and
244 Severe Outcomes Among Veterans From 5 Veterans Affairs Medical Centers: Hospital-
245 Based Surveillance Study. *JMIR Public Health Surveill*. 2021;7(1):e24502-e24502.
- 246 24. Gold JAW, Wong KK, Szablewski CM, et al. Characteristics and Clinical Outcomes of
247 Adult Patients Hospitalized with COVID-19 - Georgia, March 2020. *MMWR Morb*
248 *Mortal Wkly Rep*. 2020;69(18):545-550.
- 249 25. Kabariti R, Brodin NP, Maron MI, et al. Association of Race and Ethnicity With
250 Comorbidities and Survival Among Patients With COVID-19 at an Urban Medical
251 Center in New York. *JAMA network open*. 2020;3(9):e2019795-e2019795.
- 252 26. Azar KMJ, Shen Z, Romanelli RJ, et al. Disparities In Outcomes Among COVID-19
253 Patients In A Large Health Care System In California. *Health Aff (Millwood)*.
254 2020;39(7):1253-1262.
- 255 27. Hall WJ, Chapman MV, Lee KM, et al. Implicit Racial/Ethnic Bias Among Health Care
256 Professionals and Its Influence on Health Care Outcomes: A Systematic Review. *Am J*
257 *Public Health*. 2015;105(12):e60-e76.
- 258 28. Nelson A. Unequal treatment: confronting racial and ethnic disparities in health care. *J*
259 *Natl Med Assoc*. 2002;94(8):666-668.
- 260 29. Harrison SL, Fazio-Eynullayeva E, Lane DA, Underhill P, Lip GYH. Comorbidities
261 associated with mortality in 31,461 adults with COVID-19 in the United States: A
262 federated electronic medical record analysis. *PLoS Med*. 2020;17(9):e1003321-e1003321.
- 263 30. Miyashita S, Yamada T, Mikami T, Miyashita H, Chopra N, Rizk D. Impact of dementia
264 on clinical outcomes in elderly patients with coronavirus 2019 (COVID-19): an
265 experience in New York. *Geriatr Gerontol Int*. 2020;20(7):732-734.
- 266 31. Hariyanto TI, Putri C, Arisa J, Situmeang RFV, Kurniawan A. Dementia and outcomes
267 from coronavirus disease 2019 (COVID-19) pneumonia: A systematic review and meta-
268 analysis. *Arch Gerontol Geriatr*. 2021;93:104299-104299.

269
270
271

273 Table 1. Univariate and multivariate regression analysis of factors that predict hospitalization, peak severity, and death

	Hospitalization		Peak Severity		Death	
	Unadjusted OR (95% CI)	P-value	Unadjusted OR (95% CI)	P-value	Unadjusted OR (95% CI)	P-value
Univariate Regression						
Age	1.06 (1.03-1.08)	<0.001*	1.06 (1.04 - 1.09)	<0.001*	1.1 (1.06 - 1.14)	<0.001*
Female Gender	0.41 (0.12- 1.45)	0.17	0.42 (0.95 - 1.9)	0.26	n/a	n/a
Non-White Race	1.97 (1.02 - 3.8)	0.04*	1.3 (0.6 - 2.6)	0.55	0.54 (0.16 - 1.9)	0.33
From Long Term Facility	1.78 (1.04 - 3.07)	0.04*	2.8 (1.5 - 5.1)	0.001*	7.9 (3.2 - 19.2)	<0.001*
BMI < 30	1.52 (0.9 - 2.7)	0.14	1.1 (0.6 - 2)	0.77	5.8 (2.1 - 15.9)	0.001*
Dementia	0.63 (0.29 - 1.4)	0.25	1.6 (0.7 - 3.3)	0.26	7.2 (3.2 - 16.6)	<0.001*
COPD	3.04 (1.6 - 5.9)	0.001*	1.5 (0.74 - 3.2)	0.25	1.8 (0.7 - 4.5)	0.22
Heart Failure	1.6 (0.7 - 3.5)	0.25	1.8 (0.8 - 4.0)	0.18	1.9 (0.67 - 5.5)	0.23
CAD	2.93 (1.66 - 5.2)	<0.001*	2.1 (1.2 - 3.9)	0.016*	2.1 (0.9 - 4.6)	0.07
Atrial Fibrillation	2.05 (1.03 - 4.1)	0.04*	3 (1.4 - 5.9)	0.002*	3.1 (1.3 - 7.4)	0.01*
Hospitalization	n/a		n/a		2.58 (1.18-5.65)	0.017*
O2 on admission	n/a		46.2 (19.9, 107.3)	<0.001*	4.34 (1.77 - 10.6)	0.001*
Multivariate Regression						
Age	1.05 (1.03, 1.08)	<.001*	1.07 (1.03 - 1.11)	<0.001*	1.06 (1.01, 1.11)	0.019*
Non-White Race	2.39 (1.13, 5.01)	0.021*				
From long term facility	0.70 (0.36, 1.38)	0.307	1.18 (0.55, 2.55)	0.668	2.0 (0.58, 6.88)	0.273
BMI < 30	n/a		n/a		2.95 (0.81, 10.75)	0.102
Dementia	n/a		n/a		3.44 (1.07, 11.1)	0.038*
COPD	1.73 (0.84, 3.35)	0.136	n/a		n/a	
CAD	1.44 (0.75, 2.81)	0.273	0.71 (0.32, 1.55)	0.390	0.57 (0.209, 1.57)	0.283
Atrial Fibrillation	0.984 (0.45, 2.16)	0.969	1.11 (0.46, 2.64)	0.819	1.25 (0.42, 3.69)	0.686
Hospitalization	n/a		n/a		1.36 (0.40, 4.65)	0.631
O2 on admission	n/a		45.7 (18.79, 111)	<0.001*	6.74 (1.74, 26.1)	0.006*

274 *p<0.05

275 *Abbreviations: BMI – body mass index, CI – confidence interval, CAD – coronary artery disease, CKD – chronic kidney disease,*
276 *COPD – chronic obstructive pulmonary disease, LTC - long term care, O2 – oxygen, OR – odds ratio, OSA – obstructive sleep apnea*
277

278

279

280

281

282

283

284

285

286

287

288

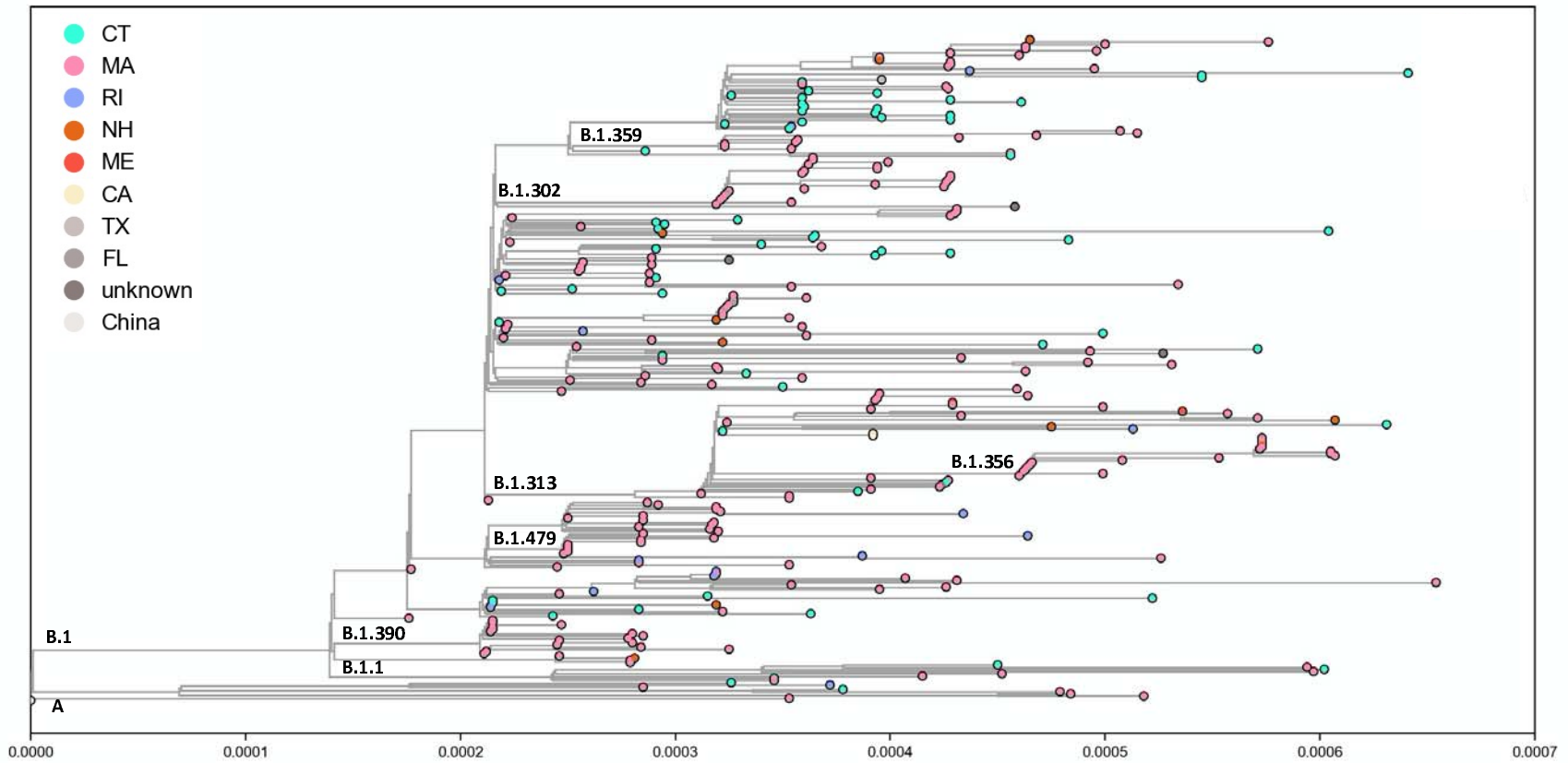
289

290

291

292

293 Figure 1. Maximum Likelihood tree of genomes



294
295
296

297 Supplemental Table 1. Patient Characteristics (n=274)
 298

Table 1 – Patient Characteristics (n = 274)

Demographics		Comorbidities	
Age (years)	62.9+17.6	Immunosuppressed	10 (4)
Gender		Dementia	42 (15)
Male	254 (93)	Diabetes	68 (25)
Female	20 (7)	CKD 3	18 (7)
Race		Chronic liver disease	32 (12)
White	228 (83)	Chronic heart disease	107 (39)
Non-white	46 (17)	CAD	74 (27)
BMI > 30	110 (40)	Heart failure	29 (11)
From LTC	92 (34)	Atrial fibrillation	40 (15)
State		Chronic Lung disease	97 (35)
Connecticut	89 (32)	COPD	44 (16)
Massachusetts	150 (55)	Asthma	19 (7)
Maine	4 (1)	OSA	55 (20)
New Hampshire	9 (3)	Tobacco Use	62 (23)
Rhode Island	20 (7)		
Vermont	2 (1)		

299 *Results are presented as numbers (percentages).*
 300 *Abbreviations: LTC - long term care, BMI – body mass index, CKD – chronic kidney disease,*
 301 *CAD – coronary artery disease, COPD – chronic obstructive pulmonary disease, OSA –*
 302 *obstructive sleep apnea*

303
 304
 305
 306
 307
 308
 309
 310
 311
 312
 313
 314
 315
 316
 317
 318
 319

320 Supplemental Table 2. Lineages of genomes
321

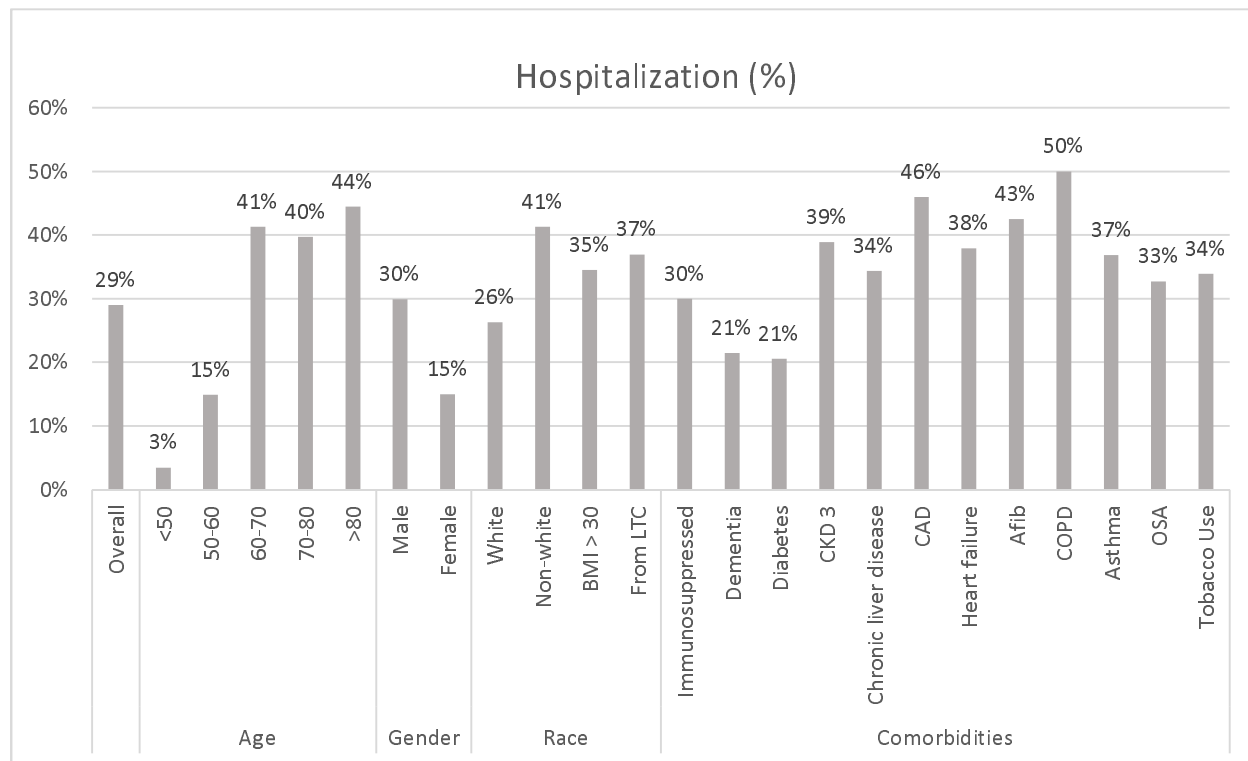
Lineage	Count	Percent
A.1	3	1.0%
A.2	2	0.7%
A.3	2	0.7%
B	1	0.3%
B.1	154	51.5%
B.1.1.10	1	0.3%
B.1.1.113	1	0.3%
B.1.1.128	1	0.3%
B.1.1.163	1	0.3%
B.1.1.192	1	0.3%
B.1.1.225	1	0.3%
B.1.1.307	1	0.3%
B.1.104	4	1.3%
B.1.108	1	0.3%
B.1.110.3	1	0.3%
B.1.2	3	1.0%
B.1.243	1	0.3%
B.1.268	1	0.3%
B.1.280	2	0.7%
B.1.302	26	8.7%
B.1.313	19	6.4%
B.1.319	1	0.3%
B.1.320	1	0.3%
B.1.331	1	0.3%
B.1.356	18	6.0%
B.1.359	8	2.7%
B.1.36	1	0.3%
B.1.369	3	1.0%
B.1.382	1	0.3%
B.1.385	1	0.3%
B.1.390	16	5.4%
B.1.403	1	0.3%
B.1.413	1	0.3%

B.1.448	2	0.7%
B.1.448	1	0.3%
B.1.479	10	3.3%
B.1.509	2	0.7%
B.1.517	1	0.3%
B.1.521	1	0.3%
B.35	1	0.3%
N.1	1	0.3%

322
323
324
325
326
327
328
329
330
331
332
333
334
335
336
337
338
339
340
341
342
343
344
345
346
347
348
349
350
351
352
353
354
355
356

357 Supplemental Figure 1. Percent of patients hospitalized, based on patient demographics and
 358 comorbidities

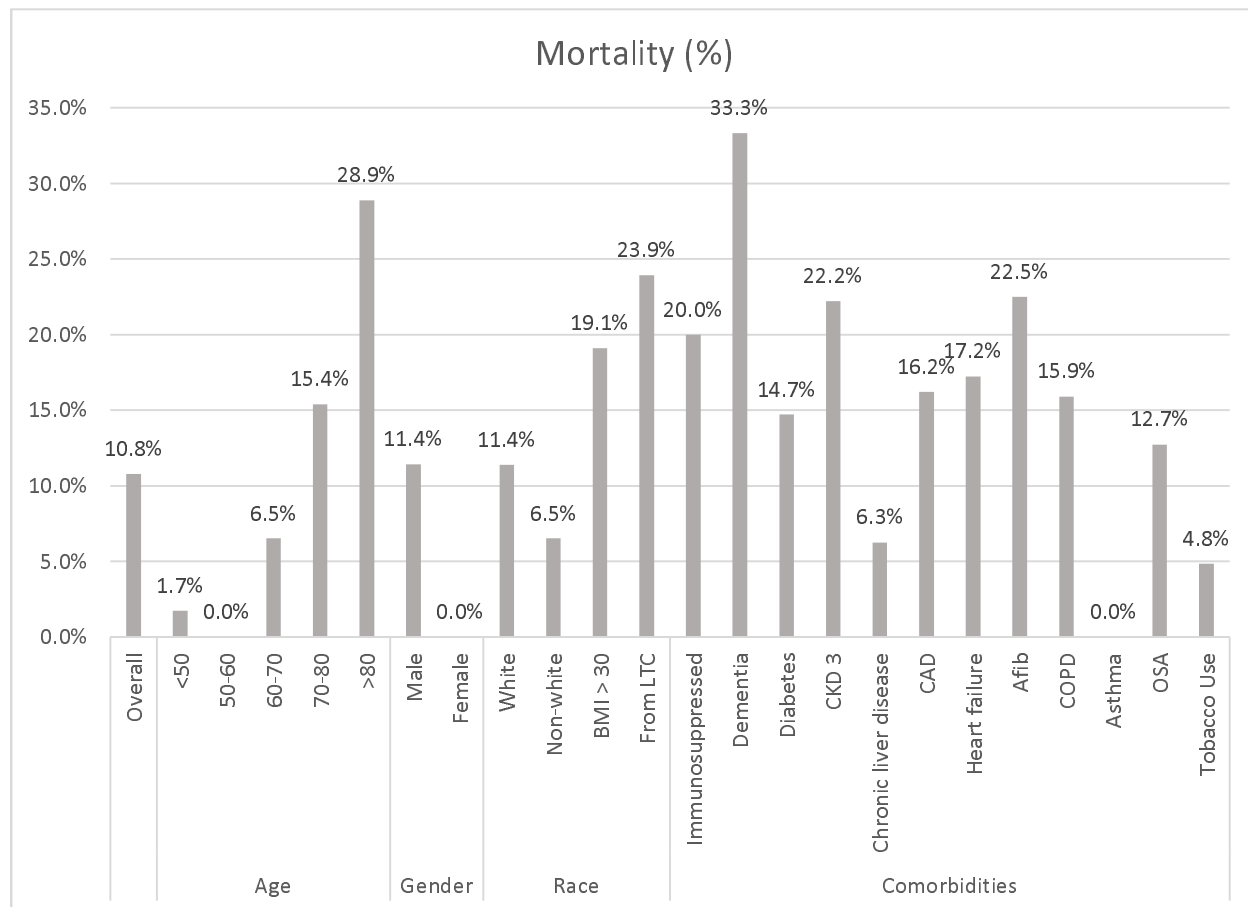
359



360
 361
 362
 363
 364
 365
 366
 367
 368
 369
 370
 371
 372
 373
 374
 375
 376
 377
 378
 379
 380
 381

382 Supplemental Figure 2. Percent of patients who died, based on patient demographics and
 383 comorbidities

384



385