

1 **COVID-19 Outcomes and Genomic characterization of SARS-CoV-2 isolated from**
2 **Veterans in New England States**

3 Megan Lee, BS^{1*}; Ya Haddy Sallah, MPH^{1*}; Mary E. Petrone, BS^{2*}; Matthew Ringer, MD³;
4 Danielle Cosentino, BS⁴; Chantal B.F. Vogels, PhD²; Joseph R. Fauver, PhD²; Tara Alpert,
5 PhD²; Nathan D. Grubaugh, PhD²; Shaili Gupta, MBBS^{3,5}

6 ¹Yale School of Medicine, 333 Cedar St., New Haven, CT 06511

7 ²Department of Epidemiology of Microbial Diseases, Yale School of Public Health, 60 College
8 St, New Haven, CT 06510

9 ³Department of Internal Medicine, Yale School of Medicine, 333 Cedar St, New Haven, CT
10 06510

11 ⁴Department of Clinical Informatics, AV Connecticut Healthcare System, 950 Campbell Ave,
12 West Haven, CT 06516

13 ⁵Department of Medicine, VA Connecticut Healthcare System, 950 Campbell Ave, West Haven,
14 CT 06516

15 * M.L., Y.H.S. and M.E.P. contributed equally to this work and are co-first authors.

16
17 **Running Title:** COVID-19 Outcomes and SARS-CoV-2 lineages in New England Veterans

18 **Corresponding Author:**

19 Shaili Gupta, MBBS

20 Department of Medicine, Yale School of Medicine

21 VA Connecticut Healthcare System

22 950 Campbell Ave, Bldg 1, 5th floor, Mailstop 111

23 West Haven, CT 06516

24 E-mail: shaili.gupta@yale.edu; phone: 203-932-5711, ext 4412; fax: 203-932-3748

25 **Word count:** Abstract: 250. Main text: 2,037.

26 **Abstract:**

27

28 **Background:** Clinical and virologic characteristics of COVID-19 infections in veterans in New
29 England have not been described.

30 **Objectives:** To evaluate clinical and virologic factors impacting COVID-19 outcomes.

31 **Study Design:** We reviewed charts and sequenced virus from nasopharyngeal specimens with
32 confirmed SARS-CoV-2 from 426 veterans in six New England states between April and
33 September, 2020. Peak disease severity, hospitalization, and mortality were correlated to clinical,
34 demographic, and virologic factors.

35 **Results:** Of 426 veterans, 274 had complete and accessible charts. 92.7% were men, 83.2%
36 White, with mean age 63 years. On multivariate regression, significant predictors of
37 hospitalization were age (OR: 1.05) and non-white race (OR: 2.39). Mortality and peak disease
38 severity varied by age (OR 1.06 and 1.07 respectively) and oxygen requirement on admission
39 (OR 6.74 and 45.7). Dementia (OR: 3.44) was also associated with mortality. Most (97.3%) of
40 our samples were dominated by the spike protein D614G substitution, and were from SARS-
41 CoV-2 B.1 lineage or one of 37 different B.1 sub-lineages, with none representing more than
42 8.7% of the cases.

43 **Conclusions:** In an older cohort of veterans from the six New England states with a high
44 comorbidity burden, age was the largest predictor of hospitalization, peak disease severity, and
45 mortality. Non-white veterans were more likely to be hospitalized, and patients who required
46 oxygen on admission were more likely to have severe disease and higher rates of mortality.
47 Multiple SARS-CoV-2 lineages were distributed in patients in New England early in the
48 COVID-19 era, mostly related to viruses from New York with D614G mutation.

49 **Keywords:** COVID-19, Outcomes, Veterans, Age, SARS-CoV-2, D614G

50
51
52
53
54
55
56
57
58
59
60
61
62
63
64
65
66
67
68
69
70
71
72
73

Background

The Coronavirus Disease 2019 (COVID-19) caused by Severe Acute Respiratory

Syndrome Coronavirus-2 (SARS-CoV-2) has infected >30 million people in the United States and caused nearly 600,000 deaths [1]. Disease severities and outcomes vary among individuals who become infected. Throughout the course of the pandemic, researchers have tried to identify patient and viral characteristics that predispose patients to having worse outcomes. Some host-factors known to impact disease severity and mortality include Charlson comorbidity index score, age, and body mass index (BMI) [2-6].

Virologic characteristics have also been suggested to impact the severity of disease.

A dynamic nomenclature system (Pangolin) was developed to classify SARS-CoV-2 and identify lineages and mutations that could impact infectivity and virulence [7]. Early during the pandemic course in the United States, viral isolates on the East Coast of the US were predominantly of the B.1 lineage that contained the Spike protein D614G substitution [8]. This substitution has been suggested to have higher transmissibility [9], supported by the higher upper airway viral loads and higher viral replication in lung epithelial cells [10]. At the same time, viruses with the D614G substitution has also been found to be more susceptible to neutralization by antibodies generated by infection with wild-type virus [11,12]. With the increasing focus on emerging SARS-CoV-2 genetic variants, such as the lethality of B.1.1.7 [13], more research is required on how mutations affect patient outcomes. Furthermore, understanding viral epidemiology and a regional evaluation of viral variants, with their respective clinical correlations, is important to provide a full understanding of the disease.

74 **Objectives**

75 Given the high variability and conflicting data in predicting who will have poor
76 outcomes, assessment of specific populations is necessary to give providers the best clinical
77 picture on their patients. Clinical outcomes of veterans with COVID-19 in New England and
78 respective SARS-CoV-2 genomics have not been described. We aimed to (1) describe patient
79 characteristics, comorbidities, and disease factors that impact patient outcomes and (2) present
80 data on the genomic composition of the SARS-CoV-2 infecting these patients. Factors impacting
81 outcomes help inform triage and management algorithms for COVID-19.

82

83 **Study Design**

84 Our cohort was composed of all veterans receiving care at Veterans Administration (VA)
85 healthcare centers who tested positive in six New England states (Connecticut, Massachusetts,
86 Maine, New Hampshire, Rhode Island, Vermont) from April 8, 2020, to September 16, 2020.
87 Inclusion criteria included patients with accessible chart records and a positive COVID-19 test.
88 We manually reviewed charts and recorded demographics [age, gender, race, body-mass index
89 (BMI), long-term care facility (LTC) status, and state of residence when diagnosed with COVID-
90 19]. Comorbidities recorded were immunosuppression, dementia, diabetes mellitus, chronic
91 kidney disease (CKD) stage ≥ 3 , chronic liver disease, coronary artery disease (CAD), heart
92 failure, atrial fibrillation (aFib), chronic obstructive pulmonary disease (COPD), asthma, and
93 active tobacco use. A clinical database repository and virologic repository was created for all
94 veterans diagnosed with COVID-19 in the VA healthcare system of New England, and was
95 approved by VA Connecticut Institutional Review Board. Whole genome sequencing was

96 conducted on SARS-CoV-2 isolates with a cycle threshold (Ct) value <36, and provided near-
97 complete or complete genome results where Ct value was <30.

98 We recorded hospitalization status of patients, mortality, and whether patients required
99 oxygen (O₂) within 24 hours of admission. Lastly, we divided patients based on their peak
100 disease severity into five categories depending on oxygenation requirements: 1) no O₂
101 requirement, 2) 1-3 liters (L) by nasal cannula (NC), 3) 4-6 L NC, 4) >6 L O₂ or non-invasive
102 positive pressure ventilation (NIPPV), and 5) mechanical ventilation. We used STATA v16 for
103 univariate and multivariate logistic regressions to predict the outcomes of interest.

104 For the genetic data, we sequenced whole virus genomes ($\geq 20\times$ coverage depth across
105 $\geq 70\%$ of the genome) using Illumina (n = 238) and Nanopore (n = 61) platforms. Using BWA-
106 MEM version 0.7.15, we aligned reads to the Wuhan-Hu-1 reference genomes (GenBank
107 MN908937.3). With iVar v1.2.1, we trimmed sequencing adaptors and primer sequences and
108 called bases by simple majority (>50% frequency) at each site to generate consensus genomes.
109 An ambiguous N was used when fewer than 10 reads were present at a site. We aligned these
110 consensus genomes with MAFFT [14], and masked problematic sites [15]. We then built a
111 phylogenetic tree with IQTree [16] using an HKY substitution model and 1000 bootstraps. We
112 visualized this tree using the Python module baltic v0.1.5. We used Pangolin to assign lineages
113 to our genomes [7].

114

115 **Results**

116 Of 476 veterans in six New England states with confirmed SARS-CoV-2 during the study
117 period, 274 had complete and accessible charts. Of 274 veterans, 92.7% were men, 83.2% White,
118 and mean age was 63 years (standard deviation: 17.6 years) (Table 1). Over a third resided in

119 LTC (n=92), of which 76% were at the VA's community living center. Over half the residents
120 were from Massachusetts, and one third from Connecticut. The most common comorbidities
121 were CAD (27%), diabetes (25%), and tobacco use (23%).

122 Notably, 11.7% patients required O₂ above their baseline home oxygen requirements
123 within 24 hours of admission, and 20.8% of all patients required oxygen support at some point
124 during hospitalization. In terms of peak severity, 78.5% required only room air, 10.9% required
125 1-3 L O₂ via NC, 4.0% required 4-6 L O₂ via NC, 3.6% required >6L O₂ or NIPPV, and 2.2%
126 were intubated. The hospitalization rate was 28.8% (Figure 1), with the highest rates in people
127 with COPD (50%), CAD (45.9%), and those over age 80 years (44.4%). The overall mortality
128 rate was 10.6% (Figure 2), with the highest rates in people with dementia (33.3%), age >80
129 (28.9%), and those from LTC (23.9%).

130 In univariate regressions, significant predictors of hospitalization were age (Odds Ratio
131 (OR), 95% confidence interval (CI): 1.06), non-White race (OR: 1.97), LTC residence (OR:
132 1.78), COPD (OR: 3.04), CAD (OR: 2.93), and aFib (OR: 2.05). Peak severity increased with
133 age (OR: 1.06), LTC residence (OR: 2.8), CAD (OR: 2.1), aFib (OR: 2.97), and O₂ requirement
134 on admission (OR: 46.2). Higher mortality was seen with age (OR: 1.10), LTC residence (OR:
135 7.86), BMI<30 (OR: 5.80), dementia (OR: 7.23), aFib (OR: 3.11), hospitalization (OR: 2.58),
136 and O₂ requirement on admission (OR: 4.34) (Table 2).

137 Using multivariate regression, significant predictors of hospitalization were age (OR:
138 1.05) and non-White race (OR: 2.39) (Table 3). Peak severity also varied by age (OR: 1.07) and
139 O₂ requirement on admission (OR: 45.7). Mortality was predicted by age (OR: 1.06), dementia
140 (OR:3.44), and O₂ requirement on admission (OR: 6.74). In other words, for every year increase

141 in age, the odds of hospitalization increased by 5%, peak severity increased by 7%, and mortality
142 increased by 6%.

143 For the genomic characteristics, amongst the 426 patients, 299 patients genomes had
144 adequate coverage for analysis. We found the majority of our specimens (154/299, 51.5%) were
145 from SARS-CoV-2 lineage B.1, or a sub-lineage of B.1 (e.g. B.1.302, B.1.303, B.1.356;
146 137/299, 45.8%), all of which are defined by D614G substitution (Figure 3, Appendix Table 1).
147 Only 2.4% (7/299) were from the lineage A that lack the D614G mutation. Since there were 41
148 SARS-CoV-2 lineages detected in our cohort, with none of the sub-lineages consisting of more
149 than 26 COVID-19 cases, we did not have the power to test for clinical correlates. Our
150 sequencing data does inform us that the outcomes presented in this VA cohort are dominated by
151 the impacts, whatever they may be, of the B lineage D614G mutation.

152

153 **Discussion**

154 Our study found that in an older cohort of veterans with a high comorbidity burden, age
155 significantly associated with of hospitalization, peak disease severity, and mortality. Our study is
156 unique in that it is the first to look at several COVID-19 outcomes in veterans from the six New
157 England states. The CDC currently has a list of chronic medical conditions that predispose
158 individuals to severe illness from SARS-CoV-2 infection [17]. This comprehensive list of
159 comorbidities can be difficult to interpret, however, and one study found that >75% of United
160 States adults would fall under a high-risk category [18]. Veterans are a unique cohort because
161 they suffer from high rates of comorbid disease and advanced age. Understanding clinical factors
162 that impact outcomes in veterans will help clinicians risk-stratify patients with similar
163 demographic profiles.

164 Many COVID-19 studies have found age to be a predictor of worse outcomes [4,19-22].
165 In our study, age was a significant predictor for all of our outcomes and was a confounder for
166 other variables. Interestingly, LTC status predicted all three of our outcomes on univariate
167 analysis, but not on multivariate analyses. Because age is associated with both having COVID-
168 19 and living in an LTC, it confounded the relationship between the outcomes and LTC status.
169 Earlier in the COVID-19 pandemic, residents of nursing homes had higher rates of infection as
170 well as severe illness and mortality [23]. Our study shows that among veterans in LTC facility,
171 disease outcomes were not impacted by their residence status.

172 Concurrent work in our lab suggests that oxygen requirement on admission predicts poor
173 outcomes in veterans (Ringer et al, unpublished work). This has helped inform the triage
174 guidelines at our healthcare system. This is an important finding because other ways of
175 determining oxygenation status, such as the arterial oxygen saturation/ fraction of inspired
176 oxygen (SaO₂/FiO₂) ratio [24], can frequently change, and thus become difficult for clinicians to
177 use in practice.

178 Our study supports data from previous trials that non-White patients are at increased risk
179 of hospitalization but have similar peak severity and mortality outcomes [25,26]. One study of
180 5,902 patients with COVID-19 in New York found that non-Hispanic Black patients were more
181 likely to test positive for coronavirus but had similar outcomes [27]. Similar to our study, Azar et
182 al. found that in 1052 cases of COVID-19 in California, non-Hispanic African American patients
183 had 2.7 increase in odds of being hospitalized [28]. Cardemil et al. also found a 4.6 and 4.2-fold
184 increase in rates of hospitalization for Hispanic and Black veterans, respectively.[25] Many
185 studies have shown that minorities often have delays in care due to mistrust of the medical
186 system because of providers' implicit biases [29,30], which might explain the outcomes in our

187 study. It is critical to continue ongoing efforts to combat medical inequities and target prevention
188 efforts and education to communities and racial groups most affected by COVID-19.

189 After adjusting for age and other comorbidities, we found that patients with dementia had
190 a higher risk of death. This is similar to other studies on patients with COVID-19 and dementia
191 [20,31,32]. In a meta-analysis of 46,391 patients, Hariyanto et al. found that dementia was
192 associated with a higher risk of severe infection (relative risk: 2.63) and death (relative risk:
193 2.62) [33]. This may be explained by a host of biological factors, but it emphasizes the
194 importance of extra care and monitoring required when approaching a patient with dementia. In
195 this vulnerable population, providers and caregivers must ensure they receive sufficient support
196 throughout the course of their illness.

197 Limitations of this work include the smaller sample size. Furthermore, our study is
198 specific to veterans, which is a largely male and older cohort, and results may not therefore be
199 generalizable. The time period of this study was prior to established medical therapies for
200 COVID-19 and our outcomes reported are likely worse than you would expect today. Since this
201 was during the first wave of the pandemic when standard guidelines were not yet solidified,
202 many patients not requiring oxygen were admitted which is not standard of practice today.
203 Strengths of our study include its comprehensive scope, wide geographic range, manual chart
204 review allowing for the capturing of all comorbidities and oxygenation parameters that may not
205 be available otherwise in a database, and multivariate analysis of many potential risk factors.

206

207 **Conclusion**

208 Our study found that in an older cohort of veterans from the six New England states with a high
209 comorbidity burden, age was the single strongest predictor of hospitalization, peak severity, and

210 mortality. Non-white veterans were more likely to be hospitalized, and patients who required
211 oxygen on admission were more likely to have severe disease and higher rates of mortality.
212 Furthermore, patients with dementia were more likely to die. Multiple genomic variants of
213 SARS-CoV-2 were distributed in patients in New England early in the COVID-19 era, mostly
214 from a B.1 sub-lineage with the spike D614G mutation.
215

216 **Acknowledgements:** The authors report no conflicts of interest.

217 **Funding:** This work was supported by Centers for Disease Control and Prevention [BAA

218 75D301-20-R-68024 to N.D.G. and S.G.] and the Yale Center for Clinical Investigation TL1

219 TR001864 (M.E.P.).

220

221

222

223

224

225

226

227

228

229

230

231

232

233

234

235

236

237

238

239

240
241
242
243
244
245
246
247
248
249
250
251
252
253
254
255
256
257
258
259
260
261
262
263
264
265
266
267
268
269
270
271
272
273
274
275
276
277
278
279
280
281
282
283

Literature Cited

1. U.S. Department of Health & Human Services. Published COVID Data Tracker. Accessed March 25, 2021.
2. Simonnet A, Chetboun M, Poissy J, et al. High Prevalence of Obesity in Severe Acute Respiratory Syndrome Coronavirus-2 (SARS-CoV-2) Requiring Invasive Mechanical Ventilation. *Obesity (Silver Spring)*. 2020;28(7):1195-1199.
3. Garg S, Kim L, Whitaker M, et al. Hospitalization Rates and Characteristics of Patients Hospitalized with Laboratory-Confirmed Coronavirus Disease 2019 - COVID-NET, 14 States, March 1-30, 2020. *MMWR Morb Mortal Wkly Rep*. 2020;69(15):458-464.
4. Ioannou GN, Locke E, Green P, et al. Risk Factors for Hospitalization, Mechanical Ventilation, or Death Among 10□131 US Veterans With SARS-CoV-2 Infection. *JAMA Netw Open*. 2020;3(9):e2022310.
5. Richardson S, Hirsch JS, Narasimhan M, et al. Presenting Characteristics, Comorbidities, and Outcomes Among 5700 Patients Hospitalized With COVID-19 in the New York City Area. *Jama*. 2020;323(20):2052-2059.
6. Wu C, Chen X, Cai Y, et al. Risk Factors Associated With Acute Respiratory Distress Syndrome and Death in Patients With Coronavirus Disease 2019 Pneumonia in Wuhan, China. *JAMA Intern Med*. 2020;180(7):934-943.
7. Rambaut A, Holmes EC, O’Toole Á, et al. A dynamic nomenclature proposal for SARS-CoV-2 lineages to assist genomic epidemiology. *Nature Microbiology*. 2020;5(11):1403-1407.
8. Brufsky A. Distinct viral clades of SARS-CoV-2: Implications for modeling of viral spread. *Journal of Medical Virology*. 2020;92(9):1386-1390.
9. Korber B, Fischer WM, Gnanakaran S, et al. Tracking Changes in SARS-CoV-2 Spike: Evidence that D614G Increases Infectivity of the COVID-19 Virus. *Cell*. 2020;182(4):812-827.e819.
10. Lorenzo-Redondo R, Nam HH, Roberts SC, et al. A clade of SARS-CoV-2 viruses associated with lower viral loads in patient upper airways. *EBioMedicine*. 2020;62.
11. Plante JA, Liu Y, Liu J, et al. Spike mutation D614G alters SARS-CoV-2 fitness. *Nature*. 2021;592(7852):116-121.
12. Weissman D, Alameh MG, de Silva T, et al. D614G Spike Mutation Increases SARS CoV-2 Susceptibility to Neutralization. *Cell Host Microbe*. 2021;29(1):23-31.e24.
13. Davies NG, Jarvis CI, Edmunds WJ, Jewell NP, Diaz-Ordaz K, Keogh RH. Increased mortality in community-tested cases of SARS-CoV-2 lineage B.1.1.7. *Nature*. 2021.
14. Katoh K, Standley DM. MAFFT Multiple Sequence Alignment Software Version 7: Improvements in Performance and Usability. *Molecular Biology and Evolution*. 2013;30(4):772-780.
15. Nicola De Maio* CW, Rui Borges, Lukas Weilguny, Greg Slodkowitz, Nick Goldman. Masking strategies for SARS-CoV-2 alignments. <https://virological.org/t/masking-strategies-for-sars-cov-2-alignments/480>. Published 2020. Accessed April 9, 2021.

- 284 16. Minh BQ, Schmidt HA, Chernomor O, et al. IQ-TREE 2: New Models and Efficient
285 Methods for Phylogenetic Inference in the Genomic Era. *Molecular Biology and*
286 *Evolution*. 2020;37(5):1530-1534.
- 287 17. People with Certain Medical Conditions. In: CDC, ed2021.
- 288 18. Ajufo E, Rao S, Navar AM, Pandey A, Ayers CR, Khera A. U.S. population at increased
289 risk of severe illness from COVID-19. *Am J Prev Cardiol*. 2021;6:100156-100156.
- 290 19. Docherty AB, Harrison EM, Green CA, et al. Features of 20 133 UK patients in hospital
291 with covid-19 using the ISARIC WHO Clinical Characterisation Protocol: prospective
292 observational cohort study. *BMJ*. 2020;369:m1985-m1985.
- 293 20. Giorgi Rossi P, Marino M, Formisano D, et al. Characteristics and outcomes of a cohort
294 of COVID-19 patients in the Province of Reggio Emilia, Italy. *PLoS One*.
295 2020;15(8):e0238281-e0238281.
- 296 21. Kim L, Garg S, O'Halloran A, et al. Risk Factors for Intensive Care Unit Admission and
297 In-hospital Mortality among Hospitalized Adults Identified through the U.S. Coronavirus
298 Disease 2019 (COVID-19)-Associated Hospitalization Surveillance Network (COVID-
299 NET). *Clin Infect Dis*. 2020:ciaa1012.
- 300 22. Williamson EJ, Walker AJ, Bhaskaran K, et al. Factors associated with COVID-19-
301 related death using OpenSAFELY. *Nature*. 2020;584(7821):430-436.
- 302 23. Bagchi S MJ, Li Q, et al. *MMWR Morb Mortal Wkly Rep 2021*. Rates of COVID-19
303 Among Residents and Staff Members in Nursing Homes —
304 United States, May 25–November 22, 2020;70:52–55.
- 305 24. Garibaldi BT, Fiksel J, Muschelli J, et al. Patient Trajectories Among Persons
306 Hospitalized for COVID-19 : A Cohort Study. *Ann Intern Med*. 2021;174(1):33-41.
- 307 25. Cardemil CV, Dahl R, Prill MM, et al. COVID-19-Related Hospitalization Rates and
308 Severe Outcomes Among Veterans From 5 Veterans Affairs Medical Centers: Hospital-
309 Based Surveillance Study. *JMIR Public Health Surveill*. 2021;7(1):e24502-e24502.
- 310 26. Gold JAW, Wong KK, Szablewski CM, et al. Characteristics and Clinical Outcomes of
311 Adult Patients Hospitalized with COVID-19 - Georgia, March 2020. *MMWR Morb*
312 *Mortal Wkly Rep*. 2020;69(18):545-550.
- 313 27. Kabarriti R, Brodin NP, Maron MI, et al. Association of Race and Ethnicity With
314 Comorbidities and Survival Among Patients With COVID-19 at an Urban Medical
315 Center in New York. *JAMA network open*. 2020;3(9):e2019795-e2019795.
- 316 28. Azar KMJ, Shen Z, Romanelli RJ, et al. Disparities In Outcomes Among COVID-19
317 Patients In A Large Health Care System In California. *Health Aff (Millwood)*.
318 2020;39(7):1253-1262.
- 319 29. Hall WJ, Chapman MV, Lee KM, et al. Implicit Racial/Ethnic Bias Among Health Care
320 Professionals and Its Influence on Health Care Outcomes: A Systematic Review. *Am J*
321 *Public Health*. 2015;105(12):e60-e76.
- 322 30. Nelson A. Unequal treatment: confronting racial and ethnic disparities in health care. *J*
323 *Natl Med Assoc*. 2002;94(8):666-668.
- 324 31. Harrison SL, Fazio-Eynullayeva E, Lane DA, Underhill P, Lip GYH. Comorbidities
325 associated with mortality in 31,461 adults with COVID-19 in the United States: A
326 federated electronic medical record analysis. *PLoS Med*. 2020;17(9):e1003321-e1003321.
- 327 32. Miyashita S, Yamada T, Mikami T, Miyashita H, Chopra N, Rizk D. Impact of dementia
328 on clinical outcomes in elderly patients with coronavirus 2019 (COVID-19): an
329 experience in New York. *Geriatr Gerontol Int*. 2020;20(7):732-734.

330 33. Hariyanto TI, Putri C, Arisa J, Situmeang RFV, Kurniawan A. Dementia and outcomes
 331 from coronavirus disease 2019 (COVID-19) pneumonia: A systematic review and meta-
 332 analysis. *Arch Gerontol Geriatr.* 2021;93:104299-104299.
 333

Demographics		Comorbidities	
Age (years)	62.9+17.6	Immunosuppressed	10 (4)
Gender		Dementia	42 (15)
Male	254 (93)	Diabetes	68 (25)
Female	20 (7)	CKD 3	18 (7)
Race		Chronic liver disease	32 (12)
White	228 (83)	Chronic heart disease	107 (39)
Non-white	46 (17)	CAD	74 (27)
BMI > 30	110 (40)	Heart failure	29 (11)
From LTC	92 (34)	Atrial fibrillation	40 (15)
State		Chronic Lung disease	97 (35)
Connecticut	89 (32)	COPD	44 (16)
Massachusetts	150 (55)	Asthma	19 (7)
Maine	4 (1)	OSA	55 (20)
New Hampshire	9 (3)	Tobacco Use	62 (23)
Rhode Island	20 (7)		
Vermont	2 (1)		

334 *Results are presented as numbers (percentages).*
 335 *Abbreviations: LTC - long term care, BMI – body mass index, CKD – chronic kidney disease,*
 336 *CAD – coronary artery disease, COPD – chronic obstructive pulmonary disease, OSA –*
 337 *obstructive sleep apnea*
 338

339 **Table 1. Patient Characteristics (n=274)**
 340
 341

Demographics	Hospitalization		Peak Severity		Death	
	Unadjusted OR (95% CI)	P-value	Unadjusted OR (95% CI)	P-value	Unadjusted OR (95% C.)	P-value
Age	1.06 (1.03-1.08)	<0.001*	1.06 (1.04 - 1.09)	<0.001*	1.1 (1.06 - 1.14)	<0.001*
Gender						
Male	Ref		Ref		Ref	
Female	0.41 (0.12-1.45)	0.17	0.42 (0.95 - 1.9)	0.26	n/a	n/a
Race						
White	Ref		Ref		Ref	
Non-White	1.97 (1.02 - 3.8)	0.04*	1.3 (0.6 - 2.6)	0.55	0.54 (0.16 - 1.9)	0.33
From Long Term Facility	1.78 (1.04 - 3.07)	0.04*	2.8 (1.5 - 5.1)	0.001*	7.9 (3.2 - 19.2)	<0.001*
Clinical Characteristics						
BMI < 30	1.52 (0.9 - 2.7)	0.14	1.1 (0.6 - 2)	0.77	5.8 (2.1 - 15.9)	0.001*
Dementia	0.63 (0.29 - 1.4)	0.25	1.6 (0.7 - 3.3)	0.26	7.2 (3.2 - 16.6)	<0.001*
COPD	3.04 (1.6 - 5.9)	0.001*	1.5 (0.74 - 3.2)	0.25	1.8 (0.7 - 4.5)	0.22
Heart Failure	1.6 (0.7 - 3.5)	0.25	1.8 (0.8 - 4.0)	0.18	1.9 (0.67 - 5.5)	0.23
CAD	2.93 (1.66 - 5.2)	<0.001*	2.1 (1.2 - 3.9)	0.016*	2.1 (0.9 - 4.6)	0.07
Atrial Fibrillation	2.05 (1.03 - 4.1)	0.04*	3 (1.4 - 5.9)	0.002*	3.1 (1.3 - 7.4)	0.01*
Hospitalization	n/a		n/a		2.58 (1.18-5.65)	0.017*
O2 on admission	n/a		46.2 (19.9, 107.3)	<0.001*	4.34 (1.77 - 10.6)	0.001*

342 *p<0.05

343 **Table 2. Univariate regression analysis of factors that predict hospitalization, peak severity,**

344 **and death**

345

Demographics	Hospitalization		Peak Severity		Death	
	OR (95% C.I)	P-value	OR (95% C.I)	P-value	OR (95% C.I)	P-value
Age	1.05 (1.03, 1.08)	<.001*	1.07 (1.03 - 1.11)	<0.001*	1.06 (1.01, 1.11)	0.019*
Race						
White	Ref		n/a		n/a	
Non-White	2.39 (1.13, 5.01)	0.021*				
From long term facility	0.70 (0.36, 1.38)	0.307	1.18 (0.55, 2.55)	0.668	2.0 (0.58, 6.88)	0.273
Clinical Characteristics						
BMI < 30	n/a		n/a		2.95 (0.81, 10.75)	0.102
Dementia	n/a		n/a		3.44 (1.07, 11.1)	0.038*
COPD	1.73 (0.84, 3.35)	0.136	n/a		n/a	
CAD	1.44 (0.75, 2.81)	0.273	0.71 (0.32, 1.55)	0.390	0.57 (0.209, 1.57)	0.283
Atrial Fibrillation	0.984 (0.45, 2.16)	0.969	1.11 (0.46, 2.64)	0.819	1.25 (0.42, 3.69)	0.686
Hospitalization	n/a		n/a		1.36 (0.40, 4.65)	0.631
O2 on admission	n/a		45.7 (18.79, 111)	<0.001*	6.74 (1.74, 26.1)	0.006*

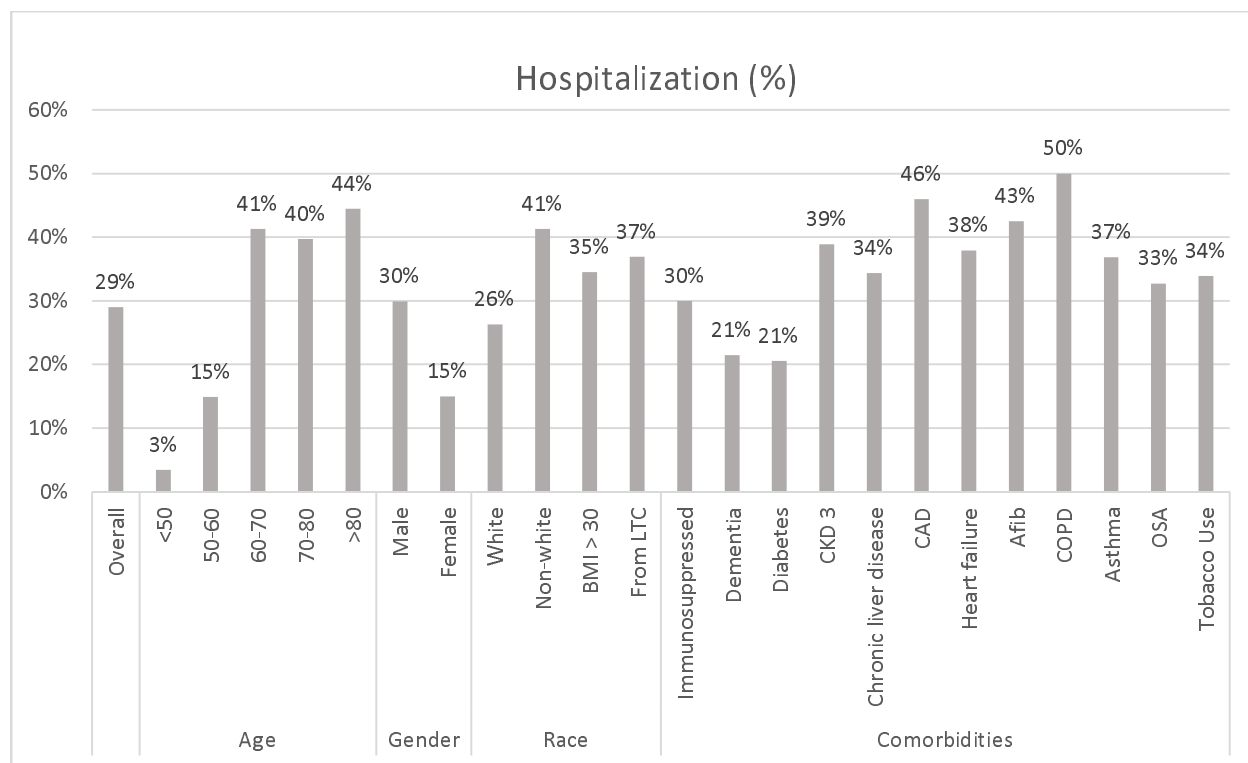
346 *p<0.05

347

348 **Table 3. Multivariate regression analysis of factors that predict hospitalization, peak**

349 **severity, and death**

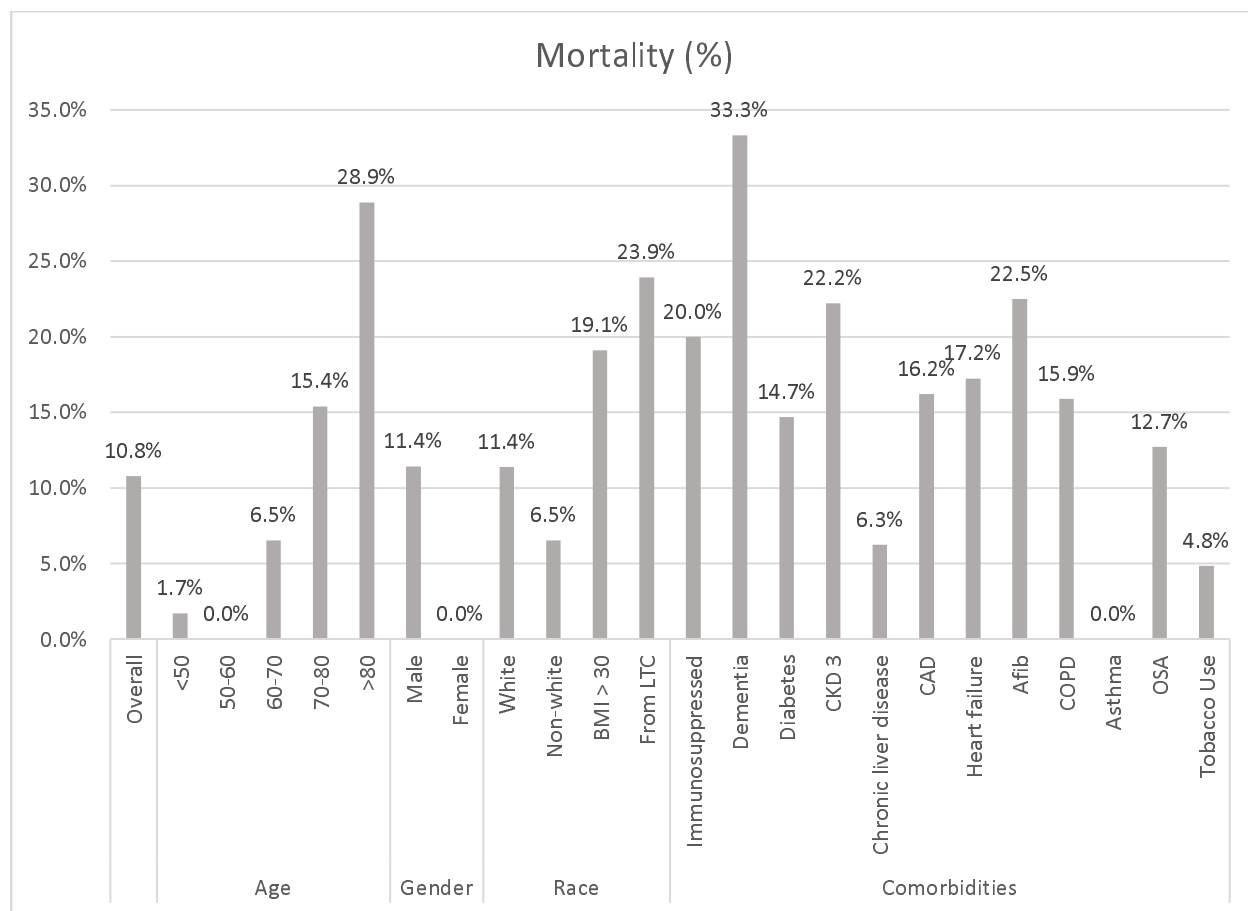
350



351

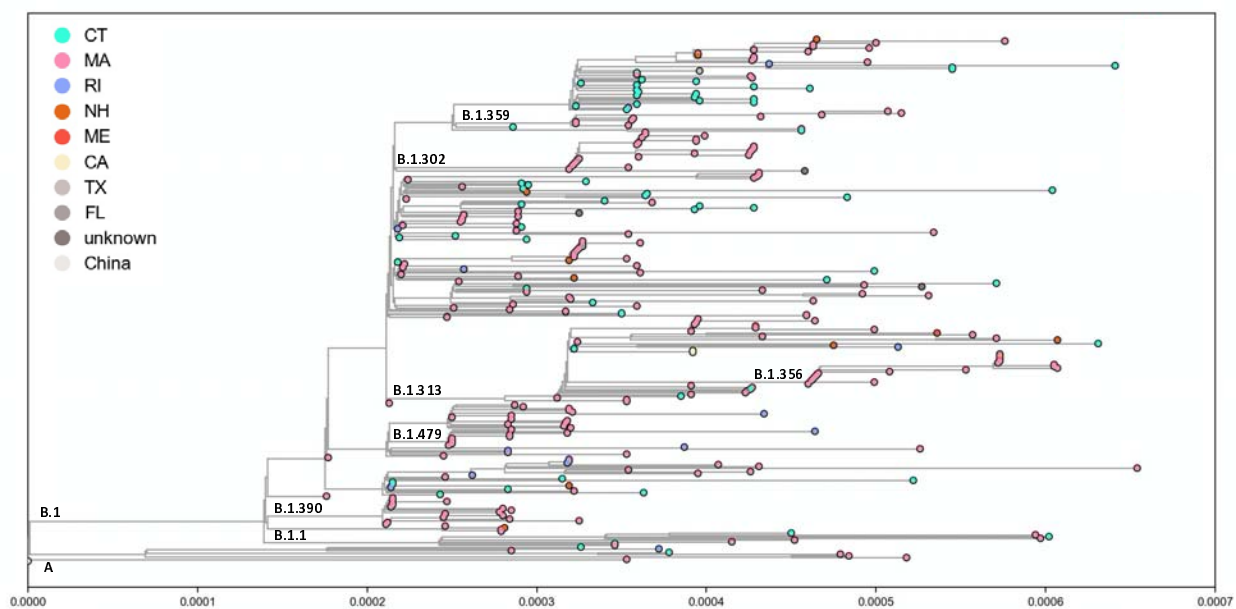
352 **Figure 1. Percent of patients hospitalized, based on patient demographics and**
353 **comorbidities**

354



355
356
357
358

Figure 2. Percent of patients who died, based on patient demographics and comorbidities



359
360 **Figure 3. Maximum Likelihood tree of genomes**
361
362 **Note: The authors would prefer color online only**
363

364 **Appendix Table. Lineages of genomes**
365

Lineage	Count	Percent
A.1	3	1.0%
A.2	2	0.7%
A.3	2	0.7%
B	1	0.3%
B.1	154	51.5%
B.1.1.10	1	0.3%
B.1.1.113	1	0.3%
B.1.1.128	1	0.3%
B.1.1.163	1	0.3%
B.1.1.192	1	0.3%
B.1.1.225	1	0.3%
B.1.1.307	1	0.3%
B.1.104	4	1.3%
B.1.108	1	0.3%
B.1.110.3	1	0.3%
B.1.2	3	1.0%
B.1.243	1	0.3%
B.1.268	1	0.3%
B.1.280	2	0.7%
B.1.302	26	8.7%
B.1.313	19	6.4%
B.1.319	1	0.3%
B.1.320	1	0.3%
B.1.331	1	0.3%
B.1.356	18	6.0%
B.1.359	8	2.7%
B.1.36	1	0.3%
B.1.369	3	1.0%
B.1.382	1	0.3%
B.1.385	1	0.3%
B.1.390	16	5.4%
B.1.403	1	0.3%
B.1.413	1	0.3%

B.1.448	2	0.7%
B.1.448	1	0.3%
B.1.479	10	3.3%
B.1.509	2	0.7%
B.1.517	1	0.3%
B.1.521	1	0.3%
B.35	1	0.3%
N.1	1	0.3%

366