

1 Genetic analyses on the health impacts of testosterone highlights effects on female-specific diseases and
2 sex differences

3 Jaakko T. Leinonen¹, Nina Mars^{1*}, Leevi E. Lehtonen^{1*}, Ari Ahola-Olli^{1*}, Sanni Ruotsalainen¹, Terho
4 Lehtimäki^{2,3}, Mika Kähönen^{3,4}, Olli Raitakari^{5,6,7}, Mark Daly^{1,8}, Tiinamaija Tuomi^{1,9,10,11,12}, Samuli Ripatti^{1,8,13},
5 Matti Pirinen^{1,13,14}, Taru Tukiainen¹

6 1 = Institute for Molecular Medicine Finland (FIMM), HiLIFE, University of Helsinki, Helsinki, Finland; 2 = Department of Clinical Chemistry, Finnish
7 Cardiovascular Research Center – Tampere; 3 = Faculty of Medicine and Health Technology, Tampere University, Tampere, Finland; 4 = Department
8 of Clinical Physiology, Finnish Cardiovascular Research Center – Tampere; 5 = Centre for Population Health Research, University of Turku and Turku
9 University Hospital; 6 = Research Centre of Applied and Preventive Cardiovascular Medicine, University of Turku; 7 = Department of Clinical
10 Physiology and Nuclear Medicine, Turku University Hospital, Turku, Finland; 8 = Broad Institute of MIT and Harvard, Cambridge, MA, USA, 9 =
11 Department of Endocrinology, Abdominal Centre, Helsinki University Hospital, Helsinki, Finland, 10 = Folkhalsan Research Center, Helsinki, Finland,
12 11 = Research Programs Unit, Clinical and Molecular Metabolism, University of Helsinki, Helsinki, Finland, 12 = Lund University Diabetes Centre,
13 Department of Clinical Sciences Malmö, Lund University, Malmö, Sweden, 13 = Department of Public Health, Faculty of Medicine, University of
14 Helsinki, Helsinki, Finland, 14 = Helsinki Institute for Information Technology HIIT and Department of Mathematics and Statistics, University of
15 Helsinki, Helsinki, Finland. * Authors contributed equally to this work. Correspondence: taru.tukiainen@helsinki.fi

16 Abstract

17 Testosterone (T) is linked with diverse characteristics of human health, yet, whether these associations
18 reflect correlation or causation remains debated. Here, we provide a broad perspective on the role of T on
19 complex diseases in both sexes leveraging genetic and health registry data from the UK Biobank and FinnGen
20 (total N=625,650).

21 We find genetically predicted T affects sex-biased and sex-specific traits, with a particularly pronounced
22 impact on female reproductive health. We show T levels are intricately involved in metabolism, sharing many
23 associations with sex hormone binding globulin (SHBG), but report lack of direct causality behind most of
24 these associations. Across other disease domains, including behavior, we find little evidence for a significant
25 contribution from normal variation in T levels. Highlighting T's unique biology, we show T displays
26 antagonistic effects on stroke risk and reproduction in males and females.

27 Overall, we underscore the involvement of T in both male and female health, and the complex mechanisms
28 linking T levels to disease risk and sex differences.

NOTE: This preprint reports new research that has not been certified by peer review and should not be used to guide clinical practice.

29 Introduction

30 Testosterone (T) is the male sex hormone responsible for regulation of development of primary and
31 secondary male sexual characteristics. Individual variation in T levels has been suggested to shape human
32 physiology broadly, including effects on disease risk in both males and females (1-3). Epidemiological studies
33 and randomized clinical trials for T replacement therapy have observed associations between serum T levels
34 and various traits ranging from type 2 diabetes (T2D) and cardiovascular disease to body composition and
35 behavior (1-11). Yet, these studies have yielded partly mixed results, and, in many instances, the proposed
36 relationships between T, complex traits and disease remain elusive (2, 7-11).

37 Besides the disease links, T is a known driver for sex differences. After puberty, males and females differ
38 extensively with respect to their average T levels, with males showing roughly 7-15-fold higher serum total T
39 concentrations (1, 12). This difference largely results from the testicular T production in males that far
40 exceeds the amount of T produced in the ovaries and the adrenal gland in females, and is known to directly
41 contribute to variation in, for instance, body composition between the sexes (1, 12).

42 In the human body, the majority of T is bound to a carrier molecule, whereas only a small fraction (1-3%) of
43 this total T exists as free T, considered to represent the most potent form of T in terms of biological activity
44 (13-15). Most of the remaining T in circulation is tightly bound by sex hormone-binding globulin (SHBG), and
45 the bulk of the rest remains attached to carrier proteins like serum albumin (13, 14). Non-SHBG bound T is
46 often approximated with free androgen index (FAI) (Figure 1A) (4, 13, 14).

47 In addition to processes affecting T production, circulating T levels are determined in both sexes by factors
48 affecting T uptake in tissues, metabolism of T and the excretion of T, subject to homeostatic and allostatic
49 regulation, allowing T levels to fluctuate based on internal and external stimuli on a daily basis (16, 17).
50 However, twin studies indicate that heritability of serum T is relatively high in both sexes, up to 65% in males
51 (18, 19). Until recently, few genetic variants were shown to associate with circulating T levels and related
52 traits in the general population (4, 18, 20, 21). Yet, through the emergence of genetic and biomarker data

53 from large biobanks, currently more than a hundred loci for serum total T, SHBG and bioavailable T (i.e. free
54 T and FAI) have been identified, with evidence for sex-specific genetic effects (22-24).

55 Recent efforts have used genetics to address the potential causal contribution of adult T to selected complex
56 traits in both sexes, including T2D, body composition and hormonal cancers, or have examined the effects of
57 free T more broadly in males based on the UK Biobank data (22, 23, 25-27). Here, we extend these
58 investigations combining data from the UK Biobank (N=408,186) and FinnGen (N=217,464). Leveraging the
59 extensive healthcare registry data of FinnGen, sex-specific polygenic scores (PGS) for T traits and SHBG, and
60 public data from genome-wide association studies (GWAS), we studied the role of T in both sexes across traits
61 ranging from metabolic conditions and sex-specific reproductive disorders to neurological and behavioral
62 endpoints.

63 Combining multiple analysis strategies, we illustrate causal links between T and sex-specific diseases and sex-
64 biased traits, including many reproductive conditions in females, while finding that the association between
65 T and many metabolic phenotypes may instead largely stem from shared etiology. Overall, our data provides
66 cues into the biology of T and its contribution to disease risk and complex traits, stressing the unique genetic
67 architecture of serum T levels, and emphasizing the crucial role of the hormone also for women's health.

68

69

70

71

72

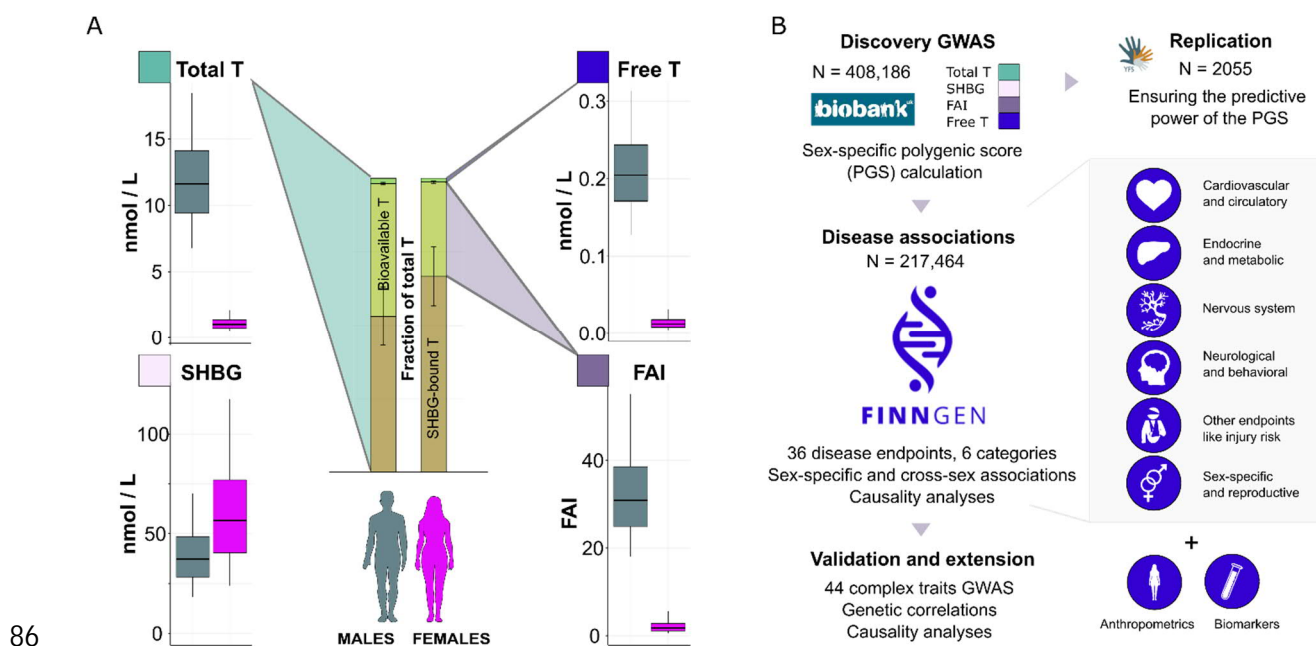
73

74

75

76 Results

77 We utilized the rich biochemical and health information available in two population-scale genetic datasets
 78 and analysis methods building on GWAS discovery (Figure 1). In brief, we conducted sex-stratified GWAS for
 79 T, SHBG, FAI and free T, using data available in the UK Biobank (Figure 1A), from which we built sex-specific
 80 PGS for these four traits. The PGSs capture the combined genetic effects on T and SHBG levels, and therefore
 81 serve as a proxy for cumulative post-pubertal T exposure. Using an external dataset (Young Finns Study; YFS),
 82 we validated the performance of the PGSs. We then investigated the effects of the PGSs on a wide range of
 83 diseases across diverse clinical entities using the FinnGen study (Figure 1B). Lastly, we evaluated causal
 84 relationships and genetic correlations between the studied T traits and complex traits, leveraging publicly
 85 available GWAS summary statistics.



87 Figure 1. Illustration of the studied traits and study overview. A) Sex-specific distributions for serum total T and SHBG
 88 and calculated FAI and free T levels for the UK Biobank participants included in the genome-wide association study
 89 (GWAS). The box plots show median (black line), lower and upper quartiles (colored area of the box) and the error bars
 90 indicate 5% and 95% quantiles. B) Overview of the study design to assess the contribution of T to health and disease
 91 using genetic approaches and biobank data. We conducted the discovery GWAS in the UK Biobank, built sex-specific
 92 PGSs for the four T-related traits, validated the PGSs in the Young Finns Study (YFS), and performed complex disease
 93 and trait associations in FinnGen (release 5) and using publicly available GWAS data.

94 GWAS and polygenic scores for testosterone traits

95 We identified more than a hundred genome-wide significant ($p < 5 \times 10^{-8}$) loci for all testosterone traits (up to
96 263 loci for SHBG in males) in the UK Biobank GWAS (Methods; Supplementary Tables 1-9). In both sexes, all
97 traits displayed significant contribution from common variants (allele frequency $> 1\%$) to the trait variability,
98 with the SNP heritability (h^2) estimates ranging from 10% for total T in females to 28% for SHBG in males
99 (Supplementary Table 9). The associated loci were enriched for genes affecting steroid hormone
100 biosynthesis, metabolism and excretion, with preferential expression in the liver for all the studied traits, in
101 line with recent findings (Supplementary Figures 1&2, Supplementary Table 10) (22-24).

102 The loci affecting SHBG were largely shared between the sexes (genetic correlation (r_g) = 0.88, $p = 9.7 \times 10^{-197}$),
103 for FAI sharing was intermediate ($r_g = 0.54$, $p = 5.8 \times 10^{-26}$), and we observed a near-zero genetic correlation
104 estimates for both serum T and free T between males and females ($r_g = 0.08$ and 0.05 , respectively, $p > 0.05$),
105 indicating sex-specific genetic determinants, as previously reported (22, 23). Co-localization analyses
106 between the male and female GWAS further confirmed the widespread sex-specificity of the genetic loci
107 (Methods, Supplementary Figure 3 and Supplementary Tables 11-19) (23).

108 Reflecting the sex-specific genetic architecture, we observed strong genetic correlation between total T and
109 SHBG only in males ($r_g = 0.78$ in males vs. 0.05 in females, Supplementary Figure 3 and Supplementary Table
110 9). In females, instead, the genetic determinants for FAI and free T were shared with SHBG (e.g. $r_g = -0.80$ with
111 FAI). Further highlighting the close connection between T and SHBG, we detected evidence for SHBG being
112 causal for total T levels in males (genetic causality proportion (GCP) = 0.80, $p = 5.8 \times 10^{-5}$, Methods), whereas in
113 females SHBG appeared to control especially FAI and free T fractions (GCP = 0.83, $p = 3.8 \times 10^{-7}$ for free T,
114 Supplementary Table 9).

115 To study the impacts of T in datasets where T measurements are not directly available, we next constructed
116 sex-specific genetic predictors for T levels, PGS, for each trait applying the LDpred algorithm (28) to the sex-
117 specific GWASs (Methods). We tested the predictive ability of the PGS in the YFS where the phenotypic
118 variance explained by the PGS (R^2) ranged between 2.5% (male free T) to 9.1% (male SHBG), indicating the

119 PGS predict T and SHBG levels in an independent cohort (Supplementary Table 20). Notably, the sex-specific
120 PGs for T and free T had no predictive value in the opposite sex (Supplementary Table 20 and Supplementary
121 Figure 4).

122 Studying the links between cumulative T exposure and disease

123 We continued by using the PGS to study how post-pubertal T exposure associates with disease risk, the
124 associations potentially implying causal relationships (28). To this end we used the FinnGen data, consisting
125 of 217,464 (94,478 males, 122,986 females) Finnish participants with genotypes linked to up to 46 years of
126 follow-up within nationwide healthcare registries. At present, the study includes roughly 5% of the Finnish
127 adult population (29). We studied 36 diseases with potential links to hormones from the following categories:
128 1) endocrine and metabolic problems, 2) sex-specific endpoints (many specific to females, e.g.
129 postmenopausal bleeding, (PMB)), 3) cardiovascular and circulatory system, 4) nervous system disease, 5)
130 behavioral and neurological diagnoses and 6) other endpoints like injury risk (Supplementary Table 21). The
131 number of cases ranged from 229 individuals diagnosed with hirsutism to 68,774 statin users.

132 We first tested whether the PGS are associated with disease risk in a sex-specific manner, observing 32
133 associations ($p < 0.0014$, after Bonferroni correction for 36 independent tests; Supplementary Table 21 and
134 Supplementary Figure 5). The vast majority of these associations involved endocrine, metabolic and sex-
135 specific disorders, highlighting in particular female-specific endpoints (Figure 2A&B, and Supplementary
136 Table 21). Further, multiple PGs often associated with the same endpoint. In males, both total T and SHBG
137 PGs often associated with reduced disease risk, whereas we saw few associations to free T. In females,
138 higher bioavailable T (FAI and free T) PGs were linked with an increased risk for multiple diseases, often
139 showing inverse associations to SHBG. Given these shared associations with SHBG, we additionally included
140 the SHBG PGS as a covariate in the analyses to distinguish true T-driven effects.

141 Underscoring T's involvement in metabolism, larger PGS values for T and SHBG were consistently associated
142 with reduced T2D risk and statin use in both sexes (for total T in males, HR=0.94, $p=1.4e-17$ and 0.96, $p=1.1e-$
143 15; for total T in females, HR=0.94, $p=9.4e-12$ and 0.97, $p=5.9e-06$ per 1SD increase in PGS, T2D and statin

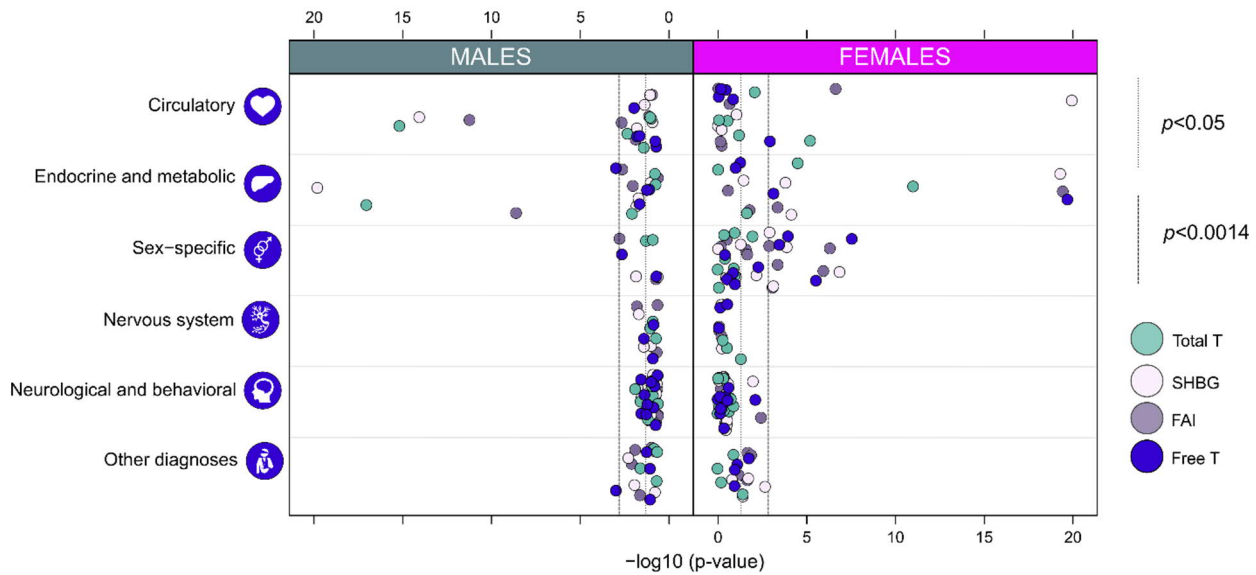
144 use, respectively). However, the SHBG adjusted analyses suggested these associations were not primarily
145 attributable to androgen action, as the effect of the T was substantially attenuated in all cases (e.g. HR=1.00,
146 $p=0.93$ for T and T2D in females, Supplementary Table 21 and Supplementary Figure 6). In females, higher T
147 PGS was additionally associated with lower hypothyroidism risk (HR=0.97, $p=3.0e-05$), an association that
148 remained after SHBG adjustment (HR=0.97, $p=3.0e-04$). We also detected suggestive links to bone strength
149 and injury risk in both sexes, but with the exception of SHBG associating with osteoporosis in females
150 (HR=1.08, $p=0.00015$), none of these findings reached statistical significance after Bonferroni correction.

151 In the sex-specific category, we replicated the known associations of free T to PCOS and breast cancer risk in
152 females (22) (HR=1.02, $p=2.8e-06$ and HR=1.04, $p=0.0001$ for free T PGS) (Figure 2B and Supplementary Table
153 20). Of the novel endpoints, we robustly linked free T with hirsutism and post-menopausal bleeding
154 (HR=1.45, $p=2.7e-08$ and HR=1.05, $p=0.00032$). The association to hirsutism (excessive hair growth in a male-
155 type fashion) appeared particularly pronounced, with the risk of this condition almost doubling with a 2SD
156 change in free T PGS. With the exception of PCOS, all these associations strengthened upon SHBG adjustment
157 (Supplementary Table 21 and Supplementary Figure 6). Higher FAI and free T PGSs associated also with
158 increased infertility risk in females (HR=1.04, $p=0.00076$ and HR=1.04, $p=0.0050$, respectively), but here we
159 instead observed confounding by SHBG. In contrast to FAI and free T, higher PGS for SHBG associated with
160 positive effects on several of the female reproductive health endpoints (e.g. HR=0.98, $p=0.00116$ for irregular
161 menstruation). In males, higher PGSs for male free T and FAI were linked with increased prostate cancer risk
162 in a nominally significant fashion (HR=1.03, $p=0.0083$ for free T, HR=1.03, $p=0.0058$ for FAI).

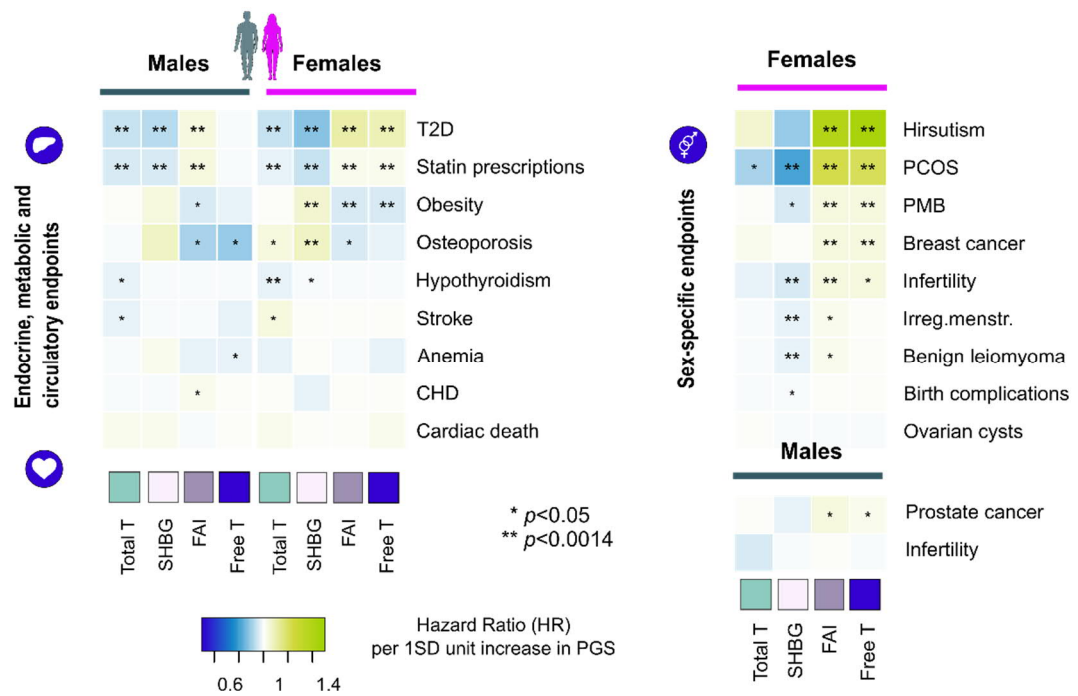
163 We observed no statistically significant associations to other diseases (Figure 2A). We for example detected
164 no associations to any of the 13 neurological/behavioral endpoints studied, including Alzheimer's disease,
165 alcohol use, and conduct and anxiety disorders (all $p>0.0014$) in both sexes. However, the PGSs did show
166 several nominal associations to cardiovascular disease (HR=1.02, $p=0.0077$ for FAI and coronary heart disease
167 (CHD) risk in males; HR=0.97, $p=0.017$ for T and stroke risk in males; HR=1.04, $p=0.0080$ for T and stroke risk
168 in females; Figure 2, and Supplementary Table 21).

169

A



B



170

171 Figure 2. Results from the PGS associations with disease endpoints in the FinnGen. Panel A illustrates the distribution of association
 172 p -values by disease category for each biomarker PGS separately for both sexes. For visual clarity p -values capped at $1e-20$. Panel B
 173 shows hazard ratios per one SD increase in PGS for 20 traits from endocrine, metabolic, circulatory and sex-specific categories.
 174 $*p < 0.05$, $**p < 0.0014$, corresponding to Bonferroni correction for 36 independent traits. PCOS = polycystic ovary syndrome, PMB =
 175 post-menopausal bleeding, CHD = coronary heart disease.

176

177

178 Evaluation of causal relationships between T and disease

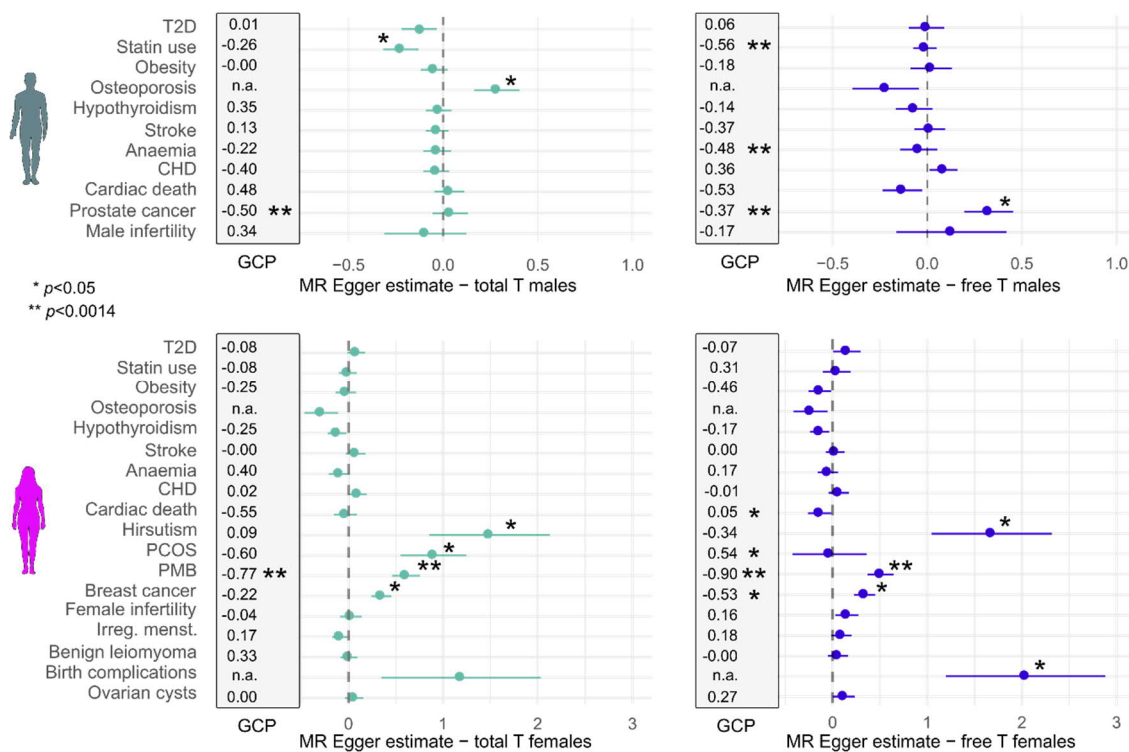
179 Although the PGS associations may imply direct causality of the first trait to another, these are also prone for
180 confounders including genetic pleiotropy (30). We estimated causal relationships between T and the studied
181 endpoints using two complementary MR methods that correct for potential pleiotropy: LCV (31),
182 representing a genome-wide approach, and MR-Egger (32) that uses significantly associated SNPs. For the
183 sex-specific PGS data, in 23/252 instances one or both methods suggested evidence for a causal relationship
184 ($p < 0.0014$) between a PGS and a disease (Figure 3, Supplementary Figure 7, and Supplementary Table 22).
185 Finally, we distinguished between the effects of T and SHBG by including the latter as a covariate in
186 multivariable MR Egger analyses (33).

187 The causality analyses supported the role of T in the regulation of female reproductive health. Under both
188 MR models, we observed causality between total and free T and postmenopausal bleeding ($\beta = 0.61$, $p = 8.6e-$
189 05 and $\beta = 0.51$, $p = 0.00034$). We also observed nominally significant evidence also for expected causal
190 relationships between female free T, hirsutism ($\beta = 1.68$, $p = 0.0095$) and PCOS (GCP = 0.54, $p = 0.0017$) (Figure 3
191 and Supplementary Table 22). Additionally, both approaches indicated causality between T and hormonal
192 cancers (e.g. GCP = -0.55, $p = 0.041$ and $\beta = 0.34$, $p = 0.0031$ for female free T and breast cancer; GCP = -0.37,
193 $p = 2.8e-16$; $\beta = 0.32$, $p = 0.014$ for male free T and prostate cancer). Notably, genetically predicted free T was
194 linked with increased cancer risk also in the opposite sex (GCP = -0.37, $p = 6.6e-19$ for male free T and breast
195 cancer, and GCP = -0.74, $p = 0.0041$ for female free T and prostate cancer). Although SHBG appeared causal to
196 irregular menstruation (GCP = 0.83, $p = 1.8e-06$, $\beta = -0.11$, $p = 0.022$), adjusting for the effects of SHBG in the
197 multivariable MR Egger analyses seemed to rather strengthen most causality estimates for T and free T
198 (Supplementary Table 22).

199 Despite the many associations to metabolism-related endpoints (Figure 2), here the evidence for causality
200 was limited to nominally significant links between female FAI and obesity (GCP = -0.63, $p = 0.014$) and male T
201 and SHBG with statin use ($\beta = -0.22$, $p = 0.018$ and $\beta = -0.14$, $p = 0.016$). The support for T levels being causal for

202 metabolic traits was thus sparse, and for example the link between total T and statins appeared confounded
203 by SHBG (the effect being close to zero in the adjusted model, Supplementary Table 22). Notably, we also
204 consistently saw no causality between T and T2D under LCV and both univariate and multivariate MR-Egger
205 models ($p > 0.05$ for all), a result that remained with both sex-combined and sex-specific T2D GWAS from
206 FinnGen (Figure 3, Supplementary Figure 7 and Supplementary Table 22).

207 Finally, evidence for a causal relationship between T levels and disease risk was detected in some instances
208 where the PGS were not associated with a given endpoint. Both T and SHBG were for example linked with
209 injury risk in both sexes (e.g. GCP=0.53, $p=0.0018$ and $\beta=0.17$, $p=1.3e-05$ for SHBG increasing forearm/elbow
210 injuries in males), potentially aligned with known hormonal contribution to bone strength (34). Notably,
211 nominal causality between male total T and osteoporosis risk vanished when adjusting with SHBG ($\beta=0.28$,
212 $p=0.019$ to $\beta=0.034$, $p=0.85$ Figure 3 and Supplementary Table 22). The multivariable MR Egger analyses also
213 highlighted the potential protective effect of T on seropositive rheumatoid arthritis (RA) in females ($\beta=-0.43$,
214 $p=0.0079$ for 1SD increase in total T, $\beta=-0.61$, $p=4.7e-05$ for FAI and $\beta=-0.48$, $p=0.0025$ for free T). Also, while
215 the PGSs did not associate with any of the neurological endpoints, LCV suggested a causal relationship
216 between higher SHBG and ADHD in both sexes, and higher free T and increased risk for conduct disorder but
217 decreased risk for emotional instability in males ($p < 0.0014$, Supplementary Table 22), pointing to potential
218 hormonal involvement in the regulation of neuronal processes.



219

220 Figure 3. Results from the causality analyses in FinnGen, showing MR estimates for total and free T in males and females. The
 221 figure includes traits from the endocrine, metabolic, circulatory and sex-specific categories shown in Figure 2. Shown are both genetic
 222 causality proportion (GCP) estimates from LCV (within the grey boxes, 0=no causality, 1= fully causal, minus sign indicates suggested
 223 reverse causality i.e. the endpoint affecting T), and MR Egger betas and standard error for each trait (horizontal lines). The MR Egger
 224 value in the x-axis corresponds to SD increase in risk/per SD increase in T/free T. * $p < 0.05$, ** $p < 0.0014$, n.a.=not applicable due to low
 225 heritability estimate in FinnGen under the LCV model.

226 Results from the cross-sex PGS associations in FinnGen

227 Owing to the unique genetic architecture, the sex-specific PGS for T and free T do not predict the
 228 corresponding hormone levels in the opposite sex (Supplementary Table 20). Given this, we reasoned that
 229 cross-sex analyses, i.e., analysis of the effect of a sex-specific PGS in the opposite sex, would provide us with
 230 an additional means to assess if the original associations stem from T action, and to detect potential
 231 antagonistic effects for the PGSs between the sexes.

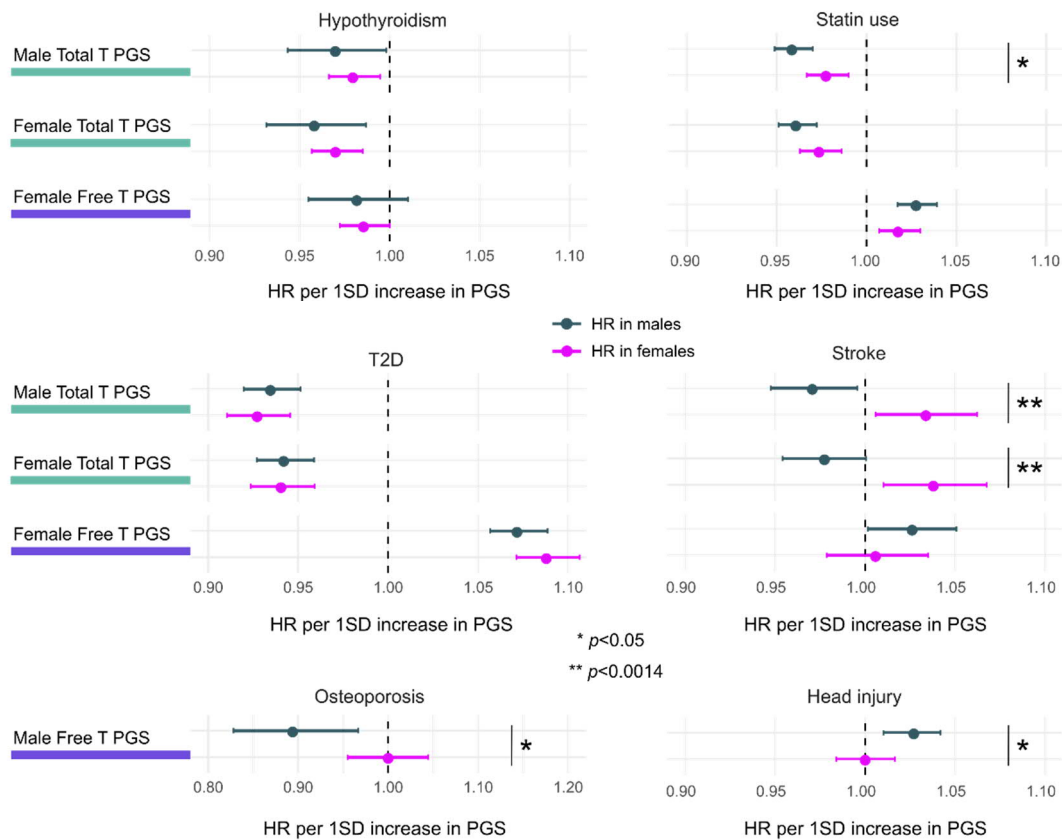
232 We first concentrated on replicating the associations of total and free T PGSs on endpoints common to both
 233 sexes. Here, aligning with the results from the MR analyses, 15/20 of the nominally significant ($p < 0.05$)
 234 associations remained similar (Z-test $p > 0.05$ for difference in PGS effects) also in the cross-sex analyses,

235 pointing to shared genetic etiology rather than T action as the likely cause for these associations. For
236 example, both female and male total T PGSs, with and without SHBG adjustment, associated with
237 hypothyroidism risk with a similar effect size in the opposite sex, and all PGS associations to T2D were
238 replicated in the other sex (Figure 4A, and Supplementary Tables 23&24).

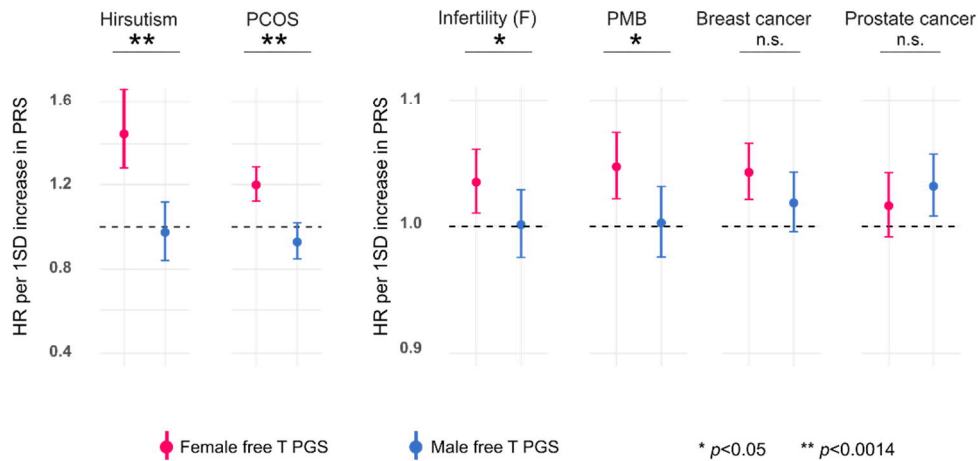
239 The sex-specific associations were not replicated (Z-test $p < 0.05$) in the opposite sex for total T PGS and stroke
240 in both sexes, and the male free T PGS, head injury risk and osteoporosis (Figure 4A, and Supplementary
241 Tables 23&24). In addition, the effect of male total T PGS on statin use was attenuated in females.
242 Intriguingly, while both male and female total T PGSs associated with increased risk for stroke in females
243 (HR=1.03, $p=0.017$ and HR=1.04, $p=0.0079$, respectively), the same PGSs rather associated with a reduced
244 stroke risk in males (HR=0.97, $p=0.017$ and HR=0.98, $p=0.073$). This was the only endpoint for which we
245 detected statistically significant evidence for a PGS having antagonistic effects depending on sex. The
246 antagonistic effect of male total T PGS on stroke enhanced with SHBG adjustment (HR=0.96, $p=0.011$ in males
247 and HR=1.07, $p=0.0010$ in females). In contrast, the female total T PGS showed no association with stroke in
248 males after the SHBG adjustment (HR 0.99, $p=0.65$), suggesting all the PGS associations to stroke may not be
249 fully androgen-driven. The results nevertheless indicate the genetic effects on stroke risk may be partly sex-
250 specific (35), with potential interplay from sex hormones.

251 Finally, the cross-sex analyses further implied increased androgen load as a direct contributor to poorer
252 reproductive health in females, agreeing with the MR-based causality assessments. For the reproductive
253 endpoints that were associated with female free T PGS, i.e., infertility, PMB, PCOS and hirsutism, the male
254 free T PGS had no predictive power (all $p < 0.05$, Figure 4B, Supplementary Tables 23&24). Yet, this approach
255 did not fully support exclusive sex-specific causality of free T for breast cancer in females and prostate cancer
256 in males. Here, we observed that the effect sizes of the PGS associations were attenuated, but not in a
257 statistically significant manner ($p > 0.05$, Figure 4B). Echoing the findings from the causality analyses, these
258 results thus suggest some degree of shared genetic risk, irrespective of T levels, between male and female
259 hormonal cancers.

A



B



260

261

262

263

264

265

266

Figure 4. Results from the cross-sex analyses. A) Illustration of cross-sex PGS associations with hypothyroidism, statin use, T2D and stroke. $p < 0.05$ suggests that the effects of a given PGS vary depending on sex B) Illustration of cases where only the female-specific free T PGS associates significantly with a trait and there is statistical evidence for male and female PGSs having different effects (hirsutism, polycystic ovary syndrome (PCOS), infertility and post-menopausal bleeding (PMB)). However this did not hold for breast and prostate cancers. *Chi-Squared $p < 0.05$, ** = Chi-Squared $p < 0.0014$, n.s. = not significant. Panels A and B show HR point estimates with 95% confidence intervals.

267 Extending the FinnGen discoveries

268 We next sought to validate and refine the FinnGen discoveries in additional datasets, extending our analysis
269 to include quantitative traits not available in large numbers in FinnGen. To this end, we used genetic
270 correlation analysis, allowing for estimation of the extent to which two traits are affected by the same genetic
271 factors (36, 37), followed by causality estimations.

272 We selected 44 traits with publicly available GWAS summary statistics, identical to (e.g., T2D, breast and
273 prostate cancers) or closely reflecting the studied disease phenotypes (heel bone mineral density (HBMD),
274 mood swings) from FinnGen, adding anthropometric traits to the analyses (Supplementary Table 25). For
275 most female-specific phenotypes studied in FinnGen, including hirsutism and PMB, we had no comparable
276 phenotypes, as there are no published GWAS available.

277 We found evidence of significant genetic correlation in 72/352 instances ($p < 0.0011$, corresponding to
278 Bonferroni correction for 44 independent tests) (Figure 5, Supplementary Table 25) with the results reflecting
279 the FinnGen PGS associations. We observed significant genetic correlations to traits related to metabolism,
280 including many biomarkers and anthropometrics, but detected only few correlations to behavioral traits, and
281 no significant correlations to neurological or temperamental traits (Figure 5, Supplementary Table 25).
282 Notably, in all cases where we observed genetic correlation to behavioral traits, these had clear links to
283 metabolism (smoking, sleep duration and exercise).

284 The genetic factors increasing serum total T and SHBG appeared to promote a favorable metabolic profile in
285 males, supporting the PGS findings. Despite correlating with increased BMI, total T and SHBG were positively
286 correlated to adiponectin, high-density lipoprotein (HDL) and lower waist-to-hip ratio (WHR) ($r_g > 0.20$,
287 $p < 0.0011$) whilst lowering triglycerides and T2D incidence in males ($r_g < -0.25$, $p < 0.0011$). In contrast, higher
288 FAI and free T fractions in females associated with negative metabolic effects, including higher WHR ($r_g = 0.25$,
289 $p = 1.6e-22$) and lower HDL cholesterol ($r_g = -0.18$, $p = 4.2e-05$), whilst free T showed no significant correlations
290 to these metabolism-related traits in males. Strong correlations were observed also between SHBG and

291 metabolic traits in females, including negative associations to markers of liver damage (alanine transaminase
292 (ALAT), $r_g=-0.21$, $p=1.7e-08$) and gamma-glutamyl transferase (GGT), $r_g=-0.16$, $p=0.0001$).

293 We observed significant genetic correlations to hormonal cancers in both sexes, in line with recent findings
294 (22, 25). In males, the genetic factors increasing FAI and free T promoted prostate cancer ($r_g=0.12$, $p=0.0004$),
295 whereas in females these increased especially the risk of estrogen receptor (ER) positive breast cancer
296 ($r_g=0.15$, $p=9.1e-09$). Finally, consistent with existing genetic, epidemiological and experimental data (1, 25),
297 the genetic correlation analyses pointed towards shared genetic background for T, hemoglobin levels and
298 body fat in both sexes (e.g. $r_g=0.15$, $p=1.0e-07$ and $r_g=-0.14$, $p=0.0002$ for hemoglobin and body fat,
299 respectively, with male free T).

300 In the LCV and MR-Egger analyses we found statistically significant evidence ($p<0.0011$) of a causal
301 relationship in 7% (26/354) of instances across the 44 traits (Figure 5 and Supplementary Table 26).
302 Reflecting the results from FinnGen, despite the genetic correlations to many traits there was no evidence
303 for significant causality, but the few suggested causal relationships involved traits with clear biological links
304 to T function.

305 As examples of expected causal relationships (1, 25, 38), our analyses supported the contribution of free T
306 levels to male-pattern baldness (MPB, $GCP=0.44$, $p=7.7e-19$) and hemoglobin levels ($GCP=0.64$, $p=0.00085$)
307 (Figure 5 and Supplementary Table 26). In addition, despite the lack of significant genetic correlations
308 between these traits, higher T in males was linked to increased number of children fathered (NCF, $GCP=0.62$,
309 $p=1.2e-15$ for total T, $GCP=0.42$, $p=0.011$ for free T), raising speculation about the potential evolutionary
310 benefits of males maintaining adequate T levels.

311 The MR Egger analyses supported the causality of female total T and free T to ER+ breast cancer ($\beta=0.282$,
312 $p=0.00014$ and $\beta=0.250$, $p=0.002$, respectively). Instead of T, in these analyses prostate cancer risk was linked
313 to SHBG levels in males ($GCP=-0.64$, $p=0.00019$) (39). Additionally, SHBG increased lymphocyte count in both
314 sexes ($GCP=0.39$, $p=1.6e-07$ in males, $GCP=0.42$, $p=0.00014$ in females) (40), and in males, we linked SHBG
315 also with reduced risk of erectile dysfunction ($GCP=0.42$, $p=0.00032$). In females, we observed causality

316 between SHBG and age at menopause ($\beta=-0.756$, $p=0.0010$), suggesting that inherited differences in SHBG
317 levels likely modify reproductive phenotypes across female lifespan.

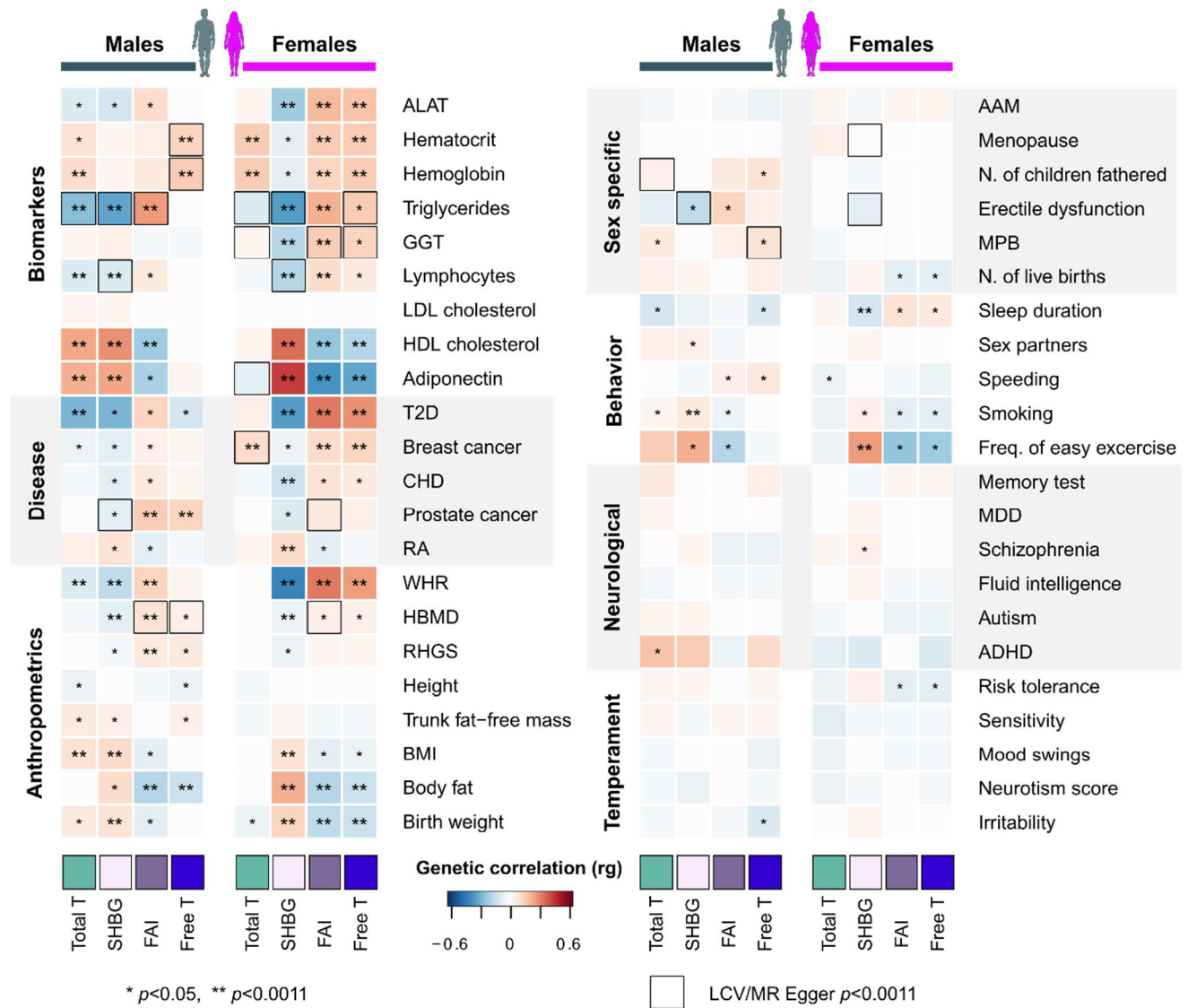
318 In most instances, we however found no evidence of a significant causal relationship between T levels and
319 the studied traits (Supplementary Table 26). Yet, emphasizing the intricate relationship between hormone
320 levels and metabolism (41), some connections to metabolism-related biomarkers emerged: for example, it
321 appeared that triglycerides may causally influence T (GCP=-0.48, $p=1.3e-30$) and free T (GCP=-0.80, $p=1.4e-$
322 06) levels in females. In combination with the PGS analyses, these results thus further suggest that whilst
323 some sex-biased phenotypes may be directly related to T levels, in most instances T's relationship to complex
324 traits and diseases is not straightforward.

325

326

327

328



329

330

331

332

333

334

335

336

337

338

Figure 5. Genetic correlation and causal relationships between the 44 traits and phenotypes from public GWAS data based on LDSC and MR analyses. * $p < 0.05$, ** $p < 0.0011$ (significant correlation after Bonferroni correction for 44 independent tests). Black boxes = ($p < 0.0011$) for a causal relationship between the tested traits based on LCV and MR Egger analyses. AAM = age at menarche, ALAT = alanine transaminase, ADHD = attention deficit and hyperactivity disorder, CHD = Coronary heart disease, GGT = Gamma-glutamyl transferase, HBMD = Heel bone mineral density, MDD = major depressive disorder, MPB = male pattern baldness, RA = rheumatoid arthritis, RHGS = relative handgrip strength, WHR = waist-to-hip ratio.

339 Discussion

340 Since its discovery in the early 20th century, testosterone (T) has been proposed to modify phenotypes and
341 diseases that differ between the sexes, due to the extensive male-female differences in circulating T levels.
342 To provide a broad and systematic perspective into the involvement of T as a regulator of health and disease
343 in males and females, we have used genetic data as an anchor allowing us to address the potential causal
344 role of post-pubertal T exposure for a wide range of diseases and traits thought to be under hormonal control.
345 We leveraged the UK Biobank resource to construct PGSs - predictors for genetically determined T levels -
346 for both males and females, which we then associated with a uniquely rich collection of disease endpoints
347 from 217,464 participants in FinnGen. This combination allowed us to extend and refine recent efforts that
348 have utilized genetic data to understand the disease impacts of T, concentrating on a limited set of
349 phenotypes or only to males (22, 23, 25-27). For instance, we included many novel endpoints from FinnGen,
350 including registry-based phenotypes like statin use, female-specific endpoints such as hirsutism and post-
351 menopausal bleeding, and neurological diagnoses like conduct disorder, where hormonal contribution has
352 not been previously studied using genetic approaches. In addition, by taking advantage of the sex-specific
353 genetic determinants of T in cross-sex analyses, and through careful Mendelian Randomization strategies,
354 we could pinpoint T's causal effects on adult health.

355 Post-pubertal T exposure and disease risk

356 Based on our analyses, three major themes emerged regarding T's contribution to disease. First, contrary to
357 T's established role as a male androgen, we report that the studied PGSs associated with disease risk
358 especially in females. Secondly, we highlight distinct association profiles for total T and free T in both sexes,
359 consistent with proposed divergent biological effects for the bound and unbound T fractions (13-15).
360 Underscoring the potential role of SHBG as a confounder when studying the action of T, the former closely
361 correlates with SHBG levels in males, and the latter in females (13-15). Thirdly, in many, but not all instances,
362 the associations with the T and free T PGSs truly seemed to reflect androgen action. We observed causal
363 relationships between a genetic predisposition to higher free T levels and several sex-specific and sex-biased

364 phenotypes with clear biological links to T, but less contribution to most other phenotypes, echoing
365 experimental data and findings from recent MR studies (22, 25).

366 Overall, our study highlights T's intricate connections to reproduction and metabolism. Besides the causal
367 links to several female-specific reproductive endpoints, many of the significant associations involved diseases
368 and traits from the metabolic and endocrine categories. We stress the complexity of these relationships, as
369 for many metabolic traits SHBG – either directly or potentially through its action on other hormones -
370 appeared to confound T's associations and causality estimates. Beyond this T/SHBG relationship, we
371 speculate that some of the observed associations to metabolic health, including T2D, may reflect even more
372 widespread genetic pleiotropy and thus overall complex shared genetic etiology rather than T action.

373 Due to the lack of significant associations and causality for many other traits, we anyhow speculate that
374 normal variation in T levels - contrary to popular beliefs - has only modest effects on most phenotypes.
375 Particularly, the grounds to explain some temperamental and neurological phenotypes like anxiety and
376 emotional instability with heritable differences in adult T levels (42, 43) appears unsubstantiated in the light
377 of our study. Although we cannot exclude a causal relationship between T and some of these phenotypes,
378 our data suggests that especially without larger sample sizes or refined phenotyping, efforts to establish
379 relationships between T levels and e.g. behavior will likely be unproductive. Taken together, supporting
380 recent recommendations, our data thus suggests that for example the risks and benefits of using T as a
381 medical treatment should be carefully weighted, given T's complex and indirect relationship to most
382 phenotypes and potential adverse and beneficial outcomes in both sexes (7, 25).

383 T as a contributor to sex differences

384 Having comprehensively mapped the impacts of T across diverse complex disease and traits, we can start
385 drawing inferences on the role of T as a contributor to the male-female differences. We reason that should
386 T causally contribute to within-sex variability of a trait, T should similarly be accountable for a fraction of the
387 between-sex difference detected in the same trait. Indeed, in such instances where causality of T was
388 implicated for a sex-shared trait, the effect estimates often aligned with the direction of the phenotypic sex

389 bias in the given trait, i.e., higher T levels associated with typical male characteristics. For instance, our work
390 highlighted causal connections between increasing free T, higher hemoglobin and higher bone strength,
391 backed up by previous experimental observations (1, 34, 44) and thus suggests the involvement of T as a
392 mediator of the established sex differences in these characteristics. Extrapolating from the MR estimates, we
393 estimate that ~10-20% of the mean difference in hemoglobin levels between males and females may result
394 from average differences in free T levels, consistent with the notion that T directly affects male-female
395 differences in, e.g., athletic capacity (1). Moreover, we find that higher free T levels are causal to masculine
396 external features like hirsutism in females and baldness in males, further implicating direct involvement of T
397 in defining sex differences. Additionally, in females higher bioavailable T levels correlated genetically with a
398 shift of metabolism into a male-like direction (e.g., increased BMI, WHR, and poorer blood lipids, yet reduced
399 risk for obesity and reduced body fat levels).

400 Overall, the limited evidence for the causal involvement of T for most of the studied traits suggests that most
401 phenotypic sex differences are not attributable to a linear relationship between T levels and a phenotype.
402 Instead the impact of T can be mediated through a threshold effect, potentially at a given developmental
403 time window, acting as a switch that results in more global rewiring of biological processes and thereby in
404 systematic male-female differences. Under this model, the within-sex variability in T may have non-existent
405 or very subtle effects on many phenotypes, complicating the detection of potential causality of T in a study
406 setting like ours that utilizes normal physiological ranges of adult T levels.

407 Connection between reproductive success and distinct genetic architecture of T between sexes?

408 Finally, our study provides some unique insight into the potential causes behind the sex differences in T
409 levels. In the cross-sex PGS analyses, we found only one case where there was clear evidence of antagonistic
410 effects for the T PGS between the sexes, which in theory might promote sex-differences in T levels. Both
411 male- and female-specific total T PGS protected from stroke in males, whereas the same PGSs had exactly
412 the opposite effects on stroke risk in females. Although we cannot conclude that the action of T truly drives

413 all of these associations, the result agrees with a degree of sex-specificity in the genetic disease mechanisms
414 for stroke (35).

415 The observation that the genetic variants responsible for regulating T levels are largely distinct between
416 males and females anyhow raises speculation about the evolutionary forces maintaining sex differences and
417 shaping the biology of T. The cross-sex genetic correlations for traits related to fitness (e.g., reproductive
418 success) are generally expected to be low, due to potentially conflicting evolutionary pressures (45). We
419 indeed associated T positively with reproductive success in males (T increasing the number of children
420 fathered), but negatively with both pre- and postmenopausal reproductive health in females with evidence
421 for a causal role of T behind these associations. We may thus speculate that there exists a selective advantage
422 in relation to reproductive success to maintain higher T levels in males, whereas the opposite may be true
423 for females, potentially promoting the widespread sex differences across multiple traits.

424 Challenges for genetic analyses in addressing T function

425 In this study, the combination of data from two independent biobanks should result in reduced confounding,
426 allowing robust inferences about the contribution of T to human phenotypes. Although based on extensive
427 data sets, our study still has some limitations. We stress that studying T levels differs drastically from studying
428 T action, the serum T levels serving only as a proxy for the latter. Theoretically, variants increasing T activity
429 may include 1) variants increasing T production or decreasing T metabolism and breakdown, resulting in
430 consistently higher T levels and 2) variants increasing T uptake in peripheral tissues or the sensitivity of body
431 to T, lowering circulating T levels. This severely limits the potential of standard genetic methods, expecting
432 linear relationships between two endpoints, to find links between T levels and complex traits. In light of the
433 established model of regulation of T levels via the hypothalamic-pituitary-gonadal (HPG) axis, (high T levels
434 leading to downregulation of gonadotropin secretion, ultimately lowering T levels), this limitation may apply
435 especially to studying T action in males (16, 17).

436 Moreover, likewise to other recent studies (22, 25), we emphasize the challenges the close ties between
437 SHBG and T may pose. Earlier studies have addressed this issue by attempting to distinguish genetic variants

438 with more specific effects for testosterone by using clustering-based approaches (22, 25). We, besides
439 accounting for the effect of SHBG by calculating the level of bioavailable T, additionally examined how SHBG-
440 adjustment influences the results of the testosterone PGS analyses and causality estimates, allowing for the
441 detection of some traits with clear SHBG confounding.

442 Besides this specific example, genetic studies are also prone to confounding by pleiotropy in a more general
443 sense, whereby a gene influences multiple traits via independent biological pathways (30). Although we
444 opted for adjusting for the effect of BMI in our GWAS – obesity being a known confounder for testosterone
445 levels (Supplementary Figure 8) (46, 47) - it remains possible that this connection still affects our findings.
446 Genetic pleiotropy may confound also MR analyses, and despite the vast potential of MR in establishing
447 causal relationships (48), we generally propose caution in interpreting these findings. In our case all MR
448 models did not always agree on causality (Supplementary Tables 22 and 27), common to recent MR studies
449 assessing the function of T (22, 23, 25). When based on large number of variants, the MR analyses often
450 include variants that do not fulfill the strict definition of an instrumental variable. Here we show via MR and
451 cross-sex PGS analyses that such pleiotropic variants may underlie for example the T associations with T2D
452 and hypothyroidism.

453 Finally, our setting does not allow for assessing the effects of fetal T exposure, which may be critical, e.g., for
454 neurological traits (49). We also emphasize that our results are based on normal variation in T levels, not on
455 the effects of supraphysiological T injections. Additionally, many of T's effects depend on its conversion to
456 estradiol also in males, and we cannot rule this out as a potential confounder in our study. Finally, the data
457 used in our study does not allow for assessing the effects of acute changes in hormone secretion, and
458 personal differences in the response to such fluctuations may be crucial for some phenotypes.

459 Despite these challenges, we were able to highlight several novel albeit often expected relationships with
460 genetically determined T levels, human health, and sex differences. Overall, we show the power of biobank-
461 scale genetic analyses to extend and clarify the results obtained from epidemiological and experimental
462 studies, leading to improved understanding on how human phenotypes are related to sex hormone levels.

463 Conclusion

464 Here, by combining PGS and electronic health records, we have assessed the link between T, disease risk and
465 complex traits, including many understudied phenotypes. We provide a broad genetic perspective on disease
466 impacts and phenotypic effects of post-pubertal T exposure, extending previous experimental and MR
467 studies. We shed light on the interplay between T and complex traits in both sexes, and the role of T in driving
468 sex differences. Finally, we underscore some critical factors that should be taken into account when assessing
469 these relationships, providing a reference point for future genetic and epidemiological studies studying the
470 action of T.

471

472 Methods

473 Genotype and phenotype data from the UK Biobank

474 The genetic association analysis was based on data from the UK Biobank, a population-based biobank
475 consisting of 502 637 subjects (aged 37-73 years)(50). At recruitment, participants provided electronic signed
476 consent. Ethics approval for the UK Biobank study was obtained from the North West Centre for Research
477 Ethics Committee (11/NW/0382). All experiments were performed in accordance to relevant guidelines and
478 regulations including the Declaration of Helsinki ethical principles for medical research. This study was run
479 under UK Biobank application number 22627.

480 Multiple biochemical assays have been performed on the entire UK Biobank cohort, including measurements
481 of serum testosterone, SHBG and serum albumin. These measurements were performed once for each
482 participant for using Beckman Coulter DXI 800 Chemiluminescent Immunoassay, with competitive binding
483 for testosterone and two-step sandwich for SHBG, referenced in
484 https://biobank.ndph.ox.ac.uk/showcase/showcase/docs/serum_biochemistry.pdf. The document contains
485 also details about the extensive QC procedures for all biochemical measurements in the UK Biobank. For
486 example, assay consistency was monitored by using internal QC samples between batches, and external
487 quality assurance schemes against the ISO 17025:2005 standard.

488 We restricted our study to encompass 408,186 individuals from the white British subset. We removed
489 outliers for genotype heterozygosity and missingness, as well as samples with sex chromosome aneuploidies,
490 mismatches between reported and inferred sex, and samples that UK Biobank did not use in relatedness
491 calculations (50). We did not exclude related samples since our analysis method (BOLT-LMM) allows for their
492 inclusion.

493 For the GWASs, we used biochemically measured testosterone and SHBG, and calculated FAI and free T. For
494 calculation of FAI, we used the formula $100 * \text{Testosterone} / \text{SHBG}$ (nmol/ml). Calculated free T was derived
495 using the Vermeulen equation using directly measured albumin values for each participant in the equation,
496 as described in (51, 52).

497 All four traits were separated by sex and log transformed. A linear regression model was fit for each trait with
498 BMI and age as covariates, as well as menopause status for females. Subjects with residuals values of ± 5 SD
499 from the mean were excluded from the analyses, serving as a further QC step to exclude outliers potentially
500 reflecting medical conditions or drug use affecting androgen levels. Inverse normalized values of the
501 remaining residuals were used as phenotype values for the GWAS analyses. After the QC-steps, our study
502 included altogether 177,499 males and 205,141 females.

503 Genetic association analysis and definition of the lead SNPs

504 The GWAS analyses were performed using BOLT-LMM (v2.3.2)(51, 52). Imputed SNPs were restricted to
505 variants with $MAF \geq 0.1\%$ and imputation quality ≥ 0.7 (50). 1000 Genomes European data was used as
506 reference LD scores for calibrating the BOLT-LMM statistic. First 10 Principal Components were used as
507 quantitative covariates in the runs. A linear regression model was fit for each trait with BMI and age as
508 covariates, as well as menopause status for females. Genetic correlation analyses, heritability estimates and
509 number of loci found implied the results remained consistent with different covariate configurations
510 (Supplementary Figure 8), but we chose to include body mass index (BMI), known to associate with T levels
511 (28, 29), as a covariate in our GWAS. Including up to 127 covariates (based on (53)), e.g., assay center, dilution

512 factors, blood draw time, and socioeconomic status indicators, or excluding related individuals from the
513 analysis all showed negligible effects on the genetic findings we report here (Supplementary Figure 8).

514 Independent lead SNPs were selected for each chromosome by recursively taking the SNP with the lowest p-
515 value (until none below the p -value threshold $5e-08$ were left) from the GWAS summary statistics and
516 removing all SNPs 500kb on each side of it from the next round. The chromosomal positions of these 1mb
517 windows were stored, and overlapping windows were merged into the final list of loci. The SNP with the
518 lowest p-value in each of these windows was selected as the lead SNP.

519 Pathway, tissue enrichment and co-localisation analyses

520 Tissue and gene set enrichment analyses were carried out with SNP2GENE and GENE2FUNC implemented in
521 FUMA using default settings (54). For testing in which tissues the genes residing in the GWAS loci were
522 preferably expressed, we used the full distribution of SNP p-values and the GTEx v6 30 general tissue types.
523 For pathway analysis, to assess whether the genes in the GWAS loci are overrepresented in pre-defined gene
524 sets via hypergeometric tests, we selected manually curated KEGG-pathways (55). For co-localisation
525 analyses to assess whether the genetic loci showed evidence for shared genetic effects between males and
526 females, and to estimate the maximum posterior probability (MAP) for the loci being shared, we used gwas-
527 pw (56).

528 Replication in the Young Finns Cohort and calculation of PGS

529 The Cardiovascular Risk in Young Finns Study (YFS) is a longitudinal follow-up of 3,596 subjects at baseline.
530 The baseline survey was conducted in 1980 and subsequent follow-ups involving the whole sample were held
531 in 1983, 1986, 2001, 2007, 2011, and 2017. For testosterone and SHBG, we used data on 2001 follow-up
532 (Subjects aged 24-39 yrs). A venous blood sample was drawn from antecubital vein after 12-hour overnight
533 fast. Serum was aliquoted and stored in -70 Celsius degrees until analysis. In males, total testosterone
534 quantification was performed in 2009 with competitive radioimmunoassay (Spectria Testosterone kit, Orion
535 Diagnostica, Espoo, Finland) and Bio-Rad Lyphocheck control serums 1, 2, and 3 were used in quality control.
536 Before quantification, serum aliquots had been melted three times. Total testosterone was quantified first

537 and aliquots were re-frozen before SHBG quantification. In females, total testosterone quantification was
538 performed in 2011. SHBG quantification for males was done in 2009 and for females in 2011 with Spectria
539 SHBG IRMA kit (Orion Diagnostica, Espoo, Finland). Free testosterone was estimated using Vermeulen's
540 formula. As albumin concentration was not available, we used fixed albumin concentration of 43 g/l.

541 In YFS, genotyping was performed at the Wellcome Trust Sanger Institute (UK) using customized Illumina
542 Human Map 670k bead array. The custom content on 670k array replaced some poor performing probes on
543 Human610 and added more CNV content. As quality control, we excluded individuals and probes with over
544 5% of missingness (--geno and --mind filters in Plink). Variants deviating from Hardy-Weinberg equilibrium (p
545 $< 1 \times 10^{-6}$) and minor allele frequency below 1% were excluded. Related samples were excluded ($n=51$) with
546 π -hat cut-off of 0.2. Total of 2,442 individuals and 546,674 variants passed the quality control measures. The
547 mean call rate across all included markers after the quality control was 0.9984. Next, imputation was
548 performed using population-specific Sequencing Initiative Suomi (SISu) as reference panel. We examined the
549 association of the UK Biobank GWAS lead SNPs with the corresponding T trait in YFS. If the annotated lead
550 SNP was not available in YFS, we used LDstore2 (v2.0b) (57) to calculate LD in a 100kb window around the
551 lead SNP in the UK Biobank imputed data and selected the closest SNP with $R^2 > 0.8$ with the lead SNP as a
552 proxy.

553 To construct PGS we applied the LDpred (28) method to the sex-specific GWAS results from the UK Biobank
554 for total T, SHBG, FAI and free T using 1000 Genomes Europeans as LD reference and the default LD radius to
555 account for LD. We then used the weights from the LDpred infinitesimal model to construct genome-wide
556 PGSs for each individual in the YFS with Plink 2.0 (11 Feb 2018). Only variants imputed with high confidence
557 (imputation INFO ≥ 0.8) were included in PGS calculation. Variants in chromosomes 1-22 and chrX were
558 included. In males, allele dosage of 2 was used for X-chromosomal haploid variants. To evaluate the PGS
559 prediction accuracy in the YFS, we calculated the R^2 for each trait using using linear regression with z-score
560 normalized PGS as predictor, age and 10 PCs as covariates and z-score normalized T trait as outcome.

561 Estimation of heritability and calculation of the genetic correlations by LDSC

562 SNP-based heritability for the studied T traits and genetic correlations between these and with 44 additional
563 phenotypes were estimated using linkage disequilibrium score regression (LDSC)(36). The summary statistics
564 for the 44 traits were downloaded directly from the source repositories and analysed locally, for the original
565 sources please see references in Supplementary Table 25. For the genetic correlation analyses, pre-computed
566 LD Scores from 1000 Genomes Europeans excluding the HLA region were used. For 23 traits we performed
567 the analyses using sex-specific GWAS results and compared these to data from sex-combined GWAS
568 (Supplementary Table 27). Generally, genetic correlation results using either sex-specific or sex-combined
569 GWAS data were highly similar.

570 Disease associations in FinnGen

571 To assess if the PGS for studied traits associate with disease risk we utilized the FinnGen study (data freeze
572 5), consisting of 217,464 (94,478 males, 122,986 females) (29). FinnGen is comprised of Finnish prospective
573 epidemiological and disease-based cohorts and voluntary biobank samples collected by hospital biobanks.
574 The genotypes have been linked to national hospital discharge (available from 1968), death (1969–), cancer
575 (1953–) and medication reimbursement (1964–) registries as well as the registry on medication purchases
576 (1995–). The samples were genotyped with Illumina and Affymetrix arrays (Illumina Inc., San Diego, and
577 Thermo Fisher Scientific, Santa Clara, CA, USA). The genotypes have been imputed with using the SISu v3
578 population-specific reference panel developed from high-quality data for 3,775 high-coverage (25-30x)
579 whole-genome sequencing in Finns. The detailed genotype imputation workflow can be found at
580 <https://dx.doi.org/10.17504/protocols.io.xbgfijw>. The dataset uses genome build 38 (hg38).

581 For PGS analyses, we used same variant weights (LDpred infinitesimal model) as for YFS, and calculated
582 genome-wide PGSs for each individual with PLINK2 (v2.00a2.3LM). Variants in chromosomes 1-22 and
583 chromosome X (imputed with high confidence, imputation INFO ≥ 0.7) were included (total number of
584 variants ranging from 6,535,263 for female total T to 6,536,405 for female SHBG) and we used genotype
585 dosages to incorporate imputation uncertainty. In males, allele dosage of 2 was used for X-chromosomal
586 haploid variants. We studied the PGS associations to 36 disease endpoints with potential links to androgens,

587 representing six loosely defined disease categories. For details of the studied phenotypes see Supplementary
588 Table 21, www.finnngen.fi and risteys.finnngen.fi. Cox proportional hazards models were used for estimating
589 hazard ratios (HRs) and 95% CIs, with age as the time scale and 10 first principal components of ancestry and
590 genotyping batch as covariates. The proportionality assumption for Cox models was assessed with
591 Schoenfeld residuals and log-log plots. For the cross-sex analyses, we took the sex-specific PGSs, and checked
592 whether these would associate with the studied endpoints in the other sex, using the z-test to compare
593 equality between the original and cross-sex associations. We additionally performed SHBG-adjusted PGS
594 associations to all endpoints to control for potential confounding of SHBG to total and free T.

595 Patients and control participants in FinnGen provided informed consent for biobank research, based on the
596 Finnish Biobank Act. Alternatively, older research cohorts, collected prior the start of FinnGen (in August
597 2017), were collected based on study-specific consents and later transferred to the Finnish biobanks after
598 approval by Valvira, the National Supervisory Authority for Welfare and Health. Recruitment protocols
599 followed the biobank protocols approved by Valvira. The Coordinating Ethics Committee of the Hospital
600 District of Helsinki and Uusimaa (HUS) approved the FinnGen study protocol Nr HUS/990/2017.

601 The FinnGen study is approved by Finnish Institute for Health and Welfare (THL), approval number
602 THL/2031/6.02.00/2017, amendments THL/1101/5.05.00/2017, THL/341/6.02.00/2018,
603 THL/2222/6.02.00/2018, THL/283/6.02.00/2019, THL/1721/5.05.00/2019, Digital and population data
604 service agency VRK43431/2017-3, VRK/6909/2018-3, VRK/4415/2019-3 the Social Insurance Institution
605 (KELA) KELA 58/522/2017, KELA 131/522/2018, KELA 70/522/2019, KELA 98/522/2019, and Statistics Finland
606 TK-53-1041-17. The Biobank Access Decisions for FinnGen samples and data utilized in FinnGen Data Freeze
607 6 include: THL Biobank BB2017_55, BB2017_111, BB2018_19, BB_2018_34, BB_2018_67, BB2018_71,
608 BB2019_7, BB2019_8, BB2019_26, Finnish Red Cross Blood Service Biobank 7.12.2017, Helsinki Biobank
609 HUS/359/2017, Auria Biobank AB17-5154, Biobank Borealis of Northern Finland_2017_1013, Biobank of
610 Eastern Finland 1186/2018, Finnish Clinical Biobank Tampere MH0004, Central Finland Biobank 1-2017, and
611 Terveystalo Biobank STB 2018001.

612 Causality analyses

613 MR analyses treat genetic variants as instrumental variables and their reliability depends on two key
614 assumptions: 1) alleles are randomly assigned, and 2) that alleles that influence exposure do not influence
615 the outcome via any other means. The first assumption is controlled by using BOLT-LMM as our model in the
616 primary GWAS analysis, but the second is harder to control when using a large number of SNPs as
617 instrumental variables. In line with the observed wide-spread genetic pleiotropy affecting most complex
618 traits, we noted that the GWAS loci contained many genes associated with pleiotropic effects on human
619 phenotypes (for example, *LIN28B* (58), *GCKR* (56) and *TYK2*(59)). Therefore, given the vast polygenicity of the
620 studied T traits, we chose latent causal variable (LCV) (31) and MR-Egger (32) as our primary MR methods,
621 designed to take into account pleiotropy-induced confounding when assessing causal relationships. LCV has
622 been proposed to provide more unbiased causality estimates than conventional MR approaches, whereas
623 MR Egger should provide accurate causality estimates under the InSIDE assumption (the genetic variants
624 have pleiotropic effects that are independent in magnitude and are thus not mediated by a single confounder
625 exposure), besides its recommended use as a sensitivity analysis for conventional MR (31, 32). For
626 comparison we also ran conventional MR analyses (Inverse-Variance Weighted (IVW)), that remains more
627 sensitive for confounding by genetic correlation and pleiotropy (31). To extend the basic MR Egger analysis
628 and to tease out the potential effects of SHBG on causality estimates of total and free T, we used multivariable
629 MR Egger (33). LCV reports genetic causality proportion (GCP) as an estimate of causality, under a model
630 where genetic correlation between two traits is mediated by a latent variable having a causal effect on each
631 trait. $GCP=1$ means trait 1 is fully correlated with the latent variable, and hence fully causal to trait 2. A high
632 GCP value and a statistically significant effect support partial genetic causality between the traits, and suggest
633 that interventions targeting trait 1 are likely to affect trait 2. The p -value obtained in the analysis refers to
634 the null hypothesis that the $GCP=0$. A highly significant p -value does not require a high GCP. Positive GCP
635 value indicates causality of trait1 to trait2, whereas a negative value indicates support for causality of trait 2
636 to trait 1. LCV also estimates genetic correlation between the traits. To estimate the how much T could
637 explain sex differences in hemoglobin we calculated $((FT_m-FT_f/SD_{FT_m}) * \beta * SD_{H_m}) / ((H_m-$

638 H_f/SD_{H_m}), where FT = mean free Testosterone, m=males, f=females, SD = standard deviation, β =MR
639 estimate, H=Hemoglobin in UK Biobank based on (60). We applied the LCV, MR-Egger, multivariate MR-Egger
640 and IWW models locally using R 4.0.2. The MR analyses were run using TwoSampleMR (v0.5.2) (61) and
641 MendelianRandomization (v0.5.0) R packages (62). For the traits from public GWAS included in genetic
642 correlation analyses, in 16 out of 44 instances we could perform two sample MR (phenotype data not based on
643 UK Biobank samples, Supplementary Table 24). FinnGen represents an independent research cohort from
644 the UK Biobank and thus all FinnGen causality analyses were two-sample MR analyses.

645

646 References

- 647 1. Handelsman DJ, Hirschberg AL, Bermon S. Circulating Testosterone as the Hormonal Basis of Sex
648 Differences in Athletic Performance. *Endocr Rev.* 2018;39(5):803-29.
- 649 2. Tyagi V, Scordo M, Yoon RS, Liporace FA, Greene LW. Revisiting the role of testosterone: Are we
650 missing something? *Rev Urol.* 2017;19(1):16-24.
- 651 3. Davis SR, Wahlin-Jacobsen S. Testosterone in women—the clinical significance. *The Lancet*
652 *Diabetes & Endocrinology.* 2015;3(12):980-92.
- 653 4. Vandendput L, Ohlsson C. Genome-wide association studies on serum sex steroid levels. *Mol Cell*
654 *Endocrinol.* 2014;382(1):758-66.
- 655 5. Kloner RA, Carson C, Dobs A, Kopecky S, Mohler ER. Testosterone and Cardiovascular Disease. *J Am*
656 *Coll Cardiol.* 2016;67(5):545-57.
- 657 6. Gagliano-Jucá T, Basaria S. Testosterone replacement therapy and cardiovascular risk. *Nature*
658 *Reviews Cardiology.* 2019;16(9):555-74.
- 659 7. Bhasin S, Brito JP, Cunningham GR, Hayes FJ, Hodis HN, Matsumoto AM, Snyder PJ, Swerdloff RS, Wu
660 FC, Yialamas MA. Testosterone Therapy in Men With Hypogonadism: An Endocrine Society* Clinical Practice
661 Guideline. *The Journal of Clinical Endocrinology & Metabolism.* 2018;103(5):1715-44.
- 662 8. Celec P, Ostatníková D, Hodosy J. On the effects of testosterone on brain behavioral functions. *Front*
663 *Neurosci.* 2015;9:12-.
- 664 9. Venturelli E, Orenti A, Fabricio ASC, Garrone G, Agresti R, Paolini B, Bonini C, Gion M, Berrino F,
665 Desmedt C, Coradini D, Biganzoli E. Observational study on the prognostic value of testosterone and adiposity
666 in postmenopausal estrogen receptor positive breast cancer patients. *BMC Cancer.* 2018;18(1):651-.
- 667 10. Stattin P, Lumme S, Tenkanen L, Alfthan H, Jellum E, Hallmans G, Thoresen S, Hakulinen T,
668 Luostarinen T, Lehtinen M, Dillner J, Stenman U-H, Hakama M. High levels of circulating testosterone are not
669 associated with increased prostate cancer risk: A pooled prospective study. 2004;108(3):418-24.
- 670 11. Eisenegger C, Naef M, Snozzi R, Heinrichs M, Fehr E. Prejudice and truth about the effect of
671 testosterone on human bargaining behaviour. *Nature.* 2010;463(7279):356-9.
- 672 12. Clark RV, Wald JA, Swerdloff RS, Wang C, Wu FCW, Bowers LD, Matsumoto AM. Large divergence in
673 testosterone concentrations between men and women: Frame of reference for elite athletes in sex-specific
674 competition in sports, a narrative review. 2019;90(1):15-22.
- 675 13. Goldman AL, Bhasin S, Wu FCW, Krishna M, Matsumoto AM, Jasuja R. A Reappraisal of Testosterone's
676 Binding in Circulation: Physiological and Clinical Implications. *Endocr Rev.* 2017;38(4):302-24.
- 677 14. Cunningham SK, Loughlin T, Culliton M, McKenna TJ. The Relationship between Sex Steroids and Sex-
678 Hormone-Binding Globulin in Plasma in Physiological and Pathological Conditions. 1985;22(5):489-97.

- 679 15. Mendel CM. The Free Hormone Hypothesis: A Physiologically Based Mathematical Model*. *Endocr*
680 *Rev.* 1989;10(3):232-74.
- 681 16. Pasquali R. The hypothalamic-pituitary-adrenal axis and sex hormones in chronic stress and obesity:
682 pathophysiological and clinical aspects. *Ann N Y Acad Sci.* 2012;1264(1):20-35.
- 683 17. Trost LW, Mulhall JP. Challenges in Testosterone Measurement, Data Interpretation,
684 and Methodological Appraisal of Interventional Trials. *The journal of sexual medicine.* 2016;13(7):1029-46.
- 685 18. Ohlsson C, Wallaschofski H, Lunetta KL, Stolk L, Perry JRB, Koster A, Petersen A-K, Eriksson J,
686 Lehtimäki T, Huhtaniemi IT, Hammond GL, Maggio M, Coviello AD, Group ES, Ferrucci L, Heier M, Hofman A,
687 Holliday KL, Jansson J-O, Kähönen M, Karasik D, Karlsson MK, Kiel DP, Liu Y, Ljunggren Ö, Lorentzon M,
688 Lyytikäinen L-P, Meitinger T, Mellström D, Melzer D, Miljkovic I, Nauck M, Nilsson M, Penninx B, Pye SR, Vasan
689 RS, Reincke M, Rivadeneira F, Tajar A, Teumer A, Uitterlinden AG, Ulloor J, Viikari J, Völker U, Völzke H,
690 Wichmann HE, Wu T-S, Zhuang WV, Ziv E, Wu FCW, Raitakari O, Eriksson A, Bidlingmaier M, Harris TB, Murray
691 A, de Jong FH, Murabito JM, Bhasin S, Vandenput L, Haring R. Genetic Determinants of Serum Testosterone
692 Concentrations in Men. *PLOS Genetics.* 2011;7(10):e1002313.
- 693 19. Harris JA, Vernon PA, Boomsma DIJBG. The Heritability of Testosterone: A Study of Dutch Adolescent
694 Twins and Their Parents. 1998;28(3):165-71.
- 695 20. Ruth KS, Campbell PJ, Chew S, Lim EM, Hadlow N, Stuckey BGA, Brown SJ, Feenstra B, Joseph J,
696 Surdulescu GL, Zheng HF, Richards JB, Murray A, Spector TD, Wilson SG, Perry JRB. Genome-wide association
697 study with 1000 genomes imputation identifies signals for nine sex hormone-related phenotypes. *Eur J Hum*
698 *Genet.* 2016;24(2):284-90.
- 699 21. Koenis MMG, Brouwer RM, van Baal GCM, van Soelen ILC, Peper JS, van Leeuwen M, Delemarre-van
700 de Waal HA, Boomsma DI, Hulshoff Pol HE. Longitudinal Study of Hormonal and Physical Development in
701 Young Twins. *The Journal of Clinical Endocrinology & Metabolism.* 2013;98(3):E518-E27.
- 702 22. Ruth KS, Day FR, Tyrrell J, Thompson DJ, Wood AR, Mahajan A, Beaumont RN, Wittemans L, Martin
703 S, Busch AS, Erzurumluoglu AM, Hollis B, O'Mara TA, McCarthy MI, Langenberg C, Easton DF, Wareham NJ,
704 Burgess S, Murray A, Ong KK, Frayling TM, Perry JRB, The Endometrial Cancer Association C. Using human
705 genetics to understand the disease impacts of testosterone in men and women. *Nat Med.* 2020;26(2):252-8.
- 706 23. Flynn E, Tanigawa Y, Rodriguez F, Altman RB, Sinnott-Armstrong N, Rivas MA. Sex-specific genetic
707 effects across biomarkers. *Eur J Hum Genet.* 2020.
- 708 24. Sinnott-Armstrong N, Naqvi S, Rivas M, Pritchard JK. GWAS of three molecular traits highlights core
709 genes and pathways alongside a highly polygenic background. *eLife.* 2021;10:e58615.
- 710 25. Mohammadi-Shemirani P, Chong M, Pigeyre M, Morton RW, Gerstein HC, Paré G. Effects of lifelong
711 testosterone exposure on health and disease using Mendelian randomization. *eLife.* 2020;9:e58914.
- 712 26. Hayes BL, Robinson T, Kar SP, Ruth KS, Tsilidis KK, Frayling TM, Murray A, Martin RM, Lawlor DA,
713 Richmond RC. Do sex hormones confound or mediate the effect of chronotype on breast and prostate
714 cancer? A Mendelian randomization study. 2021:2021.04.20.21255783.
- 715 27. Harrison S, Davies NM, Howe LD, Hughes A. Testosterone and socioeconomic position: Mendelian
716 Randomization in 306,248 men and women participants of UK Biobank. 2020:2020.11.06.20226944.
- 717 28. Vilhjálmsson Bjarni J, Yang J, Finucane Hilary K, Gusev A, Lindström S, Ripke S, Genovese G, Loh P-R,
718 Bhatia G, Do R, Hayeck T, Won H-H, Ripke S, Neale Benjamin M, Corvin A, Walters James TR, Farh K-H,
719 Holmans Peter A, Lee P, Bulik-Sullivan B, Collier David A, Huang H, Pers Tune H, Agartz I, Agerbo E, Albus M,
720 Alexander M, Amin F, Bacanu Silviu A, Begemann M, Belliveau Richard A, Jr., Bene J, Bergen Sarah E,
721 Bevilacqua E, Bigdeli Tim B, Black Donald W, Bruggeman R, Buccola Nancy G, Buckner Randy L, Byerley W,
722 Cahn W, Cai G, Champion D, Cantor Rita M, Carr Vaughan J, Carrera N, Catts Stanley V, Chambert Kimberly D,
723 Chan Raymond CK, Chen Ronald YL, Chen Eric YH, Cheng W, Cheung Eric FC, Chong Siow A, Cloninger CR,
724 Cohen D, Cohen N, Cormican P, Craddock N, Crowley James J, Curtis D, Davidson M, Davis Kenneth L,
725 Degenhardt F, Del Favero J, DeLisi Lynn E, Demontis D, Dikeos D, Dinan T, Djurovic S, Donohoe G, Drapeau E,
726 Duan J, Dudbridge F, Durmishi N, Eichhammer P, Eriksson J, Escott-Price V, Essioux L, Fanous Ayman H, Farrell
727 Martillas S, Frank J, Franke L, Freedman R, Freimer Nelson B, Friedl M, Friedman Joseph I, Fromer M,
728 Genovese G, Georgieva L, Gershon Elliot S, Giegling I, Giusti-Rodriguez P, Godard S, Goldstein Jacqueline I,
729 Golimbet V, Gopal S, Gratten J, Grove J, de Haan L, Hammer C, Hamshere Marian L, Hansen M, Hansen T,
730 Haroutunian V, Hartmann Annette M, Henskens Frans A, Herms S, Hirschhorn Joel N, Hoffmann P, Hofman

731 A, Hollegaard Mads V, Hougaard David M, Ikeda M, Joa I, Julia A, Kahn Rene S, Kalaydjieva L, Karachanak-
732 Yankova S, Karjalainen J, Kavanagh D, Keller Matthew C, Kelly Brian J, Kennedy James L, Khrunin A, Kim Y,
733 Klovins J, Knowles James A, Konte B, Kucinskas V, Kucinskiene Zita A, Kuzelova-Ptackova H, Kahler Anna K,
734 Laurent C, Keong Jimmy Lee C, Lee SH, Legge Sophie E, Lerer B, Li M, Li T, Liang K-Y, Lieberman J, Limborska
735 S, Loughland Carmel M, Lubinski J, Lnnqvist J, Macek M, Jr., Magnusson Patrik KE, Maher Brion S, Maier W,
736 Mallet J, Marsal S, Mattheisen M, Mattingdal M, McCarley Robert W, McDonald C, McIntosh Andrew M,
737 Meier S, Meijer Carin J, Melegh B, Melle I, Mesholam-Gately Raquelle I, Metspalu A, Michie Patricia T, Milani
738 L, Milanova V, Mokrab Y, Morris Derek W, Mors O, Mortensen Preben B, Murphy Kieran C, Murray Robin M,
739 Myin-Germeys I, Mller-Myhsok B, Nelis M, Nenadic I, Nertney Deborah A, Nestadt G, Nicodemus Kristin K,
740 Nikitina-Zake L, Nisenbaum L, Nordin A, O'Callaghan E, O'Dushlaine C, O'Neill FA, Oh S-Y, Olincy A, Olsen L,
741 Van Os J, Pantelis C, Papadimitriou George N, Papiol S, Parkhomenko E, Pato Michele T, Paunio T, Pejovic-
742 Milovancevic M, Perkins Diana O, Pietilinen O, Pimm J, Pocklington Andrew J, Powell J, Price A, Pulver Ann E,
743 Purcell Shaun M, Quested D, Rasmussen Henrik B, Reichenberg A, Reimers Mark A, Richards Alexander L,
744 Roffman Joshua L, Roussos P, Ruderfer Douglas M, Salomaa V, Sanders Alan R, Schall U, Schubert Christian R,
745 Schulze Thomas G, Schwab Sibylle G, Scolnick Edward M, Scott Rodney J, Seidman Larry J, Shi J, Sigurdsson E,
746 Silagadze T, Silverman Jeremy M, Sim K, Slominsky P, Smoller Jordan W, So H-C, Spencer Chris CA, Stahl Eli A,
747 Stefansson H, Steinberg S, Stogmann E, Straub Richard E, Strengman E, Strohmaier J, Stroup TS, Subramaniam
748 M, Suvisaari J, Svrakic Dragan M, Szatkiewicz Jin P, Sderman E, Thirumalai S, Toncheva D, Tooney Paul A,
749 Tosato S, Veijola J, Waddington J, Walsh D, Wang D, Wang Q, Webb Bradley T, Weiser M, Wildenauer
750 Dieter B, Williams Nigel M, Williams S, Witt Stephanie H, Wolen Aaron R, Wong Emily HM, Wormley
751 Brandon K, Wu Jing Q, Xi Hualin S, Zai Clement C, Zheng X, Zimprich F, Wray Naomi R, Stefansson K, Visscher
752 Peter M, Adolfsson R, Andreassen Ole A, Blackwood Douglas HR, Bramon E, Buxbaum Joseph D, Børglum
753 Anders D, Cichon S, Darvasi A, Domenici E, Ehrenreich H, Esko T, Gejman Pablo V, Gill M, Gurling H, Hultman
754 Christina M, Iwata N, Jablensky Assen V, Jonsson Erik G, Kendler Kenneth S, Kirov G, Knight J, Lencz T,
755 Levinson Douglas F, Li Qingqin S, Liu J, Malhotra Anil K, McCarroll Steven A, McQuillin A, Moran Jennifer L,
756 Mortensen Preben B, Mowry Bryan J, Nthen Markus M, Ophoff Roel A, Owen Michael J, Palotie A, Pato
757 Carlos N, Petryshen Tracey L, Posthuma D, Rietschel M, Riley Brien P, Rujescu D, Sham Pak C, Sklar P, St. Clair
758 D, Weinberger Daniel R, Wendland Jens R, Werge T, Daly Mark J, Sullivan Patrick F, O'Donovan Michael C,
759 Kraft P, Hunter DJ, Adank M, Ahsan H, Aittomäki K, Baglietto L, Berndt S, Blomquist C, Canzian F, Chang-
760 Claude J, Chanock SJ, Crisponi L, Czene K, Dahmen N, Silva IdS, Easton D, Eliassen AH, Figueroa J, Fletcher O,
761 Garcia-Closas M, Gaudet MM, Gibson L, Haiman CA, Hall P, Hazra A, Hein R, Henderson BE, Hofman A, Hopper
762 JL, Irwanto A, Johansson M, Kaaks R, Kibriya MG, Lichtner P, Lindström S, Liu J, Lund E, Makalic E, Meindl A,
763 Meijers-Heijboer H, Müller-Myhsok B, Muranen TA, Nevanlinna H, Peeters PH, Peto J, Prentice RL, Rahman
764 N, Sánchez MJ, Schmidt DF, Schmutzler RK, Southey MC, Tamimi R, Travis R, Turnbull C, Uitterlinden AG, van
765 der Luijt RB, Waisfisz Q, Wang Z, Whittemore AS, Yang R, Zheng W, Kathiresan S, Pato M, Pato C, Tamimi R,
766 Stahl E, Zaitlen N, Pasaniuc B, Belbin G, Kenny EE, Schierup MH, De Jager P, Patsopoulos NA, McCarroll S, Daly
767 M, Purcell S, Chasman D, Neale B, Goddard M, Visscher PM, Kraft P, Patterson N, Price AL. Modeling Linkage
768 Disequilibrium Increases Accuracy of Polygenic Risk Scores. *The American Journal of Human Genetics*.
769 2015;97(4):576-92.

770 29. Mars NJ, Koskela JT, Ripatti P, Kiiskinen TTJ, Havulinna AS, Lindbohm JV, Ahola-Olli A, Kurki M,
771 Karjalainen J, Palta P, Neale BM, Daly M, Salomaa V, Palotie A, Widén E, Ripatti S. Polygenic and clinical risk
772 scores and their impact on age at onset of cardiometabolic diseases and common cancers. 2019:727057.

773 30. Richardson TG, Harrison S, Hemani G, Davey Smith G. An atlas of polygenic risk score associations to
774 highlight putative causal relationships across the human phenome. *eLife*. 2019;8:e43657.

775 31. O'Connor LJ, Price AL. Distinguishing genetic correlation from causation across 52 diseases and
776 complex traits. *Nat Genet*. 2018;50(12):1728-34.

777 32. Burgess S, Thompson SG. Interpreting findings from Mendelian randomization using the MR-Egger
778 method. *Eur J Epidemiol*. 2017;32(5):377-89.

779 33. Rees JMB, Wood AM, Burgess S. Extending the MR-Egger method for multivariable Mendelian
780 randomization to correct for both measured and unmeasured pleiotropy. *Stat Med*. 2017;36(29):4705-18.

781 34. Snyder PJ, Kopperdahl DL, Stephens-Shields AJ, Ellenberg SS, Cauley JA, Ensrud KE, Lewis CE, Barrett-
782 Connor E, Schwartz AV, Lee DC, Bhasin S, Cunningham GR, Gill TM, Matsumoto AM, Swerdloff RS, Basaria S,

- 783 Diem SJ, Wang C, Hou X, Cifelli D, Dougar D, Zeldow B, Bauer DC, Keaveny TM. Effect of Testosterone
784 Treatment on Volumetric Bone Density and Strength in Older Men With Low Testosterone: A Controlled
785 Clinical Trial. *JAMA Intern Med.* 2017;177(4):471-9.
- 786 35. Traylor M, Rutten-Jacobs LCA, Holliday EG, Malik R, Sudlow C, Rothwell PM, Maguire JM, Koblar SA,
787 Bevan S, Boncoraglio G, Dichgans M, Levi C, Lewis CM, Markus HS. Differences in Common Genetic
788 Predisposition to Ischemic Stroke by Age and Sex. 2015;46(11):3042-7.
- 789 36. Bulik-Sullivan B, Finucane HK, Anttila V, Gusev A, Day FR, Loh P-R, Duncan L, Perry JRB, Patterson N,
790 Robinson EB, Daly MJ, Price AL, Neale BM, ReproGen C, Psychiatric Genomics C, Genetic Consortium for
791 Anorexia Nervosa of the Wellcome Trust Case Control C. An atlas of genetic correlations across human
792 diseases and traits. *Nat Genet.* 2015;47(11):1236-41.
- 793 37. van Rheenen W, Peyrot WJ, Schork AJ, Lee SH, Wray NR. Genetic correlations of polygenic disease
794 traits: from theory to practice. *Nature reviews Genetics.* 2019;20(10):567-81.
- 795 38. Choi MH, Yoo YS, Chung BC. Biochemical Roles of Testosterone and Epitestosterone to 5 α -Reductase
796 as Indicators of Male-Pattern Baldness. *J Invest Dermatol.* 2001;116(1):57-61.
- 797 39. Gann PH, Hennekens CH, Ma J, Longcope C, Stampfer MJ. Prospective Study of Sex Hormone Levels
798 and Risk of Prostate Cancer. *JNCI: Journal of the National Cancer Institute.* 1996;88(16):1118-26.
- 799 40. Brand JS, van der Schouw YT, Dowsett M, Folkert E, Luben RN, Wareham NJ, Khaw KT. Testosterone,
800 SHBG and differential white blood cell count in middle-aged and older men. *Maturitas.* 2012;71(3):274-8.
- 801 41. Palmisano BT, Zhu L, Eckel RH, Stafford JM. Sex differences in lipid and lipoprotein metabolism.
802 *Molecular Metabolism.* 2018;15:45-55.
- 803 42. McHenry J, Carrier N, Hull E, Kabbaj M. Sex differences in anxiety and depression: Role of
804 testosterone. *Front Neuroendocrinol.* 2014;35(1):42-57.
- 805 43. O'Connor DB, Archer J, Wu FCW. Effects of Testosterone on Mood, Aggression, and Sexual Behavior
806 in Young Men: A Double-Blind, Placebo-Controlled, Cross-Over Study. *The Journal of Clinical Endocrinology
807 & Metabolism.* 2004;89(6):2837-45.
- 808 44. Roy CN, Snyder PJ, Stephens-Shields AJ, Artz AS, Bhasin S, Cohen HJ, Farrar JT, Gill TM, Zeldow B, Cella
809 D, Barrett-Connor E, Cauley JA, Crandall JP, Cunningham GR, Ensrud KE, Lewis CE, Matsumoto AM, Molitch
810 ME, Pahor M, Swerdloff RS, Cifelli D, Hou X, Resnick SM, Walston JD, Anton S, Basaria S, Diem SJ, Wang C,
811 Schrier SL, Ellenberg SS. Association of Testosterone Levels With Anemia in Older Men: A Controlled Clinical
812 Trial. *JAMA Intern Med.* 2017;177(4):480-90.
- 813 45. Connallon T, Matthews G. Cross-sex genetic correlations for fitness and fitness components:
814 Connecting theoretical predictions to empirical patterns. *Evol Lett.* 2019;3(3):254-62.
- 815 46. Vihma V, Naukkarinen J, Turpeinen U, Hämäläinen E, Kaprio J, Rissanen A, Heinonen S, Hakkarainen
816 A, Lundbom J, Lundbom N, Mikkola TS, Tikkanen MJ, Pietiläinen KH. Metabolism of sex steroids is influenced
817 by acquired adiposity—A study of young adult male monozygotic twin pairs. *The Journal of Steroid
818 Biochemistry and Molecular Biology.* 2017;172:98-105.
- 819 47. Eriksson J, Haring R, Grarup N, Vandenput L, Wallaschofski H, Lorentzen E, Hansen T, Mellström D,
820 Pedersen O, Nauck M, Lorentzon M, Nystrup Husemoen LL, Völzke H, Karlsson M, Baumeister SE, Linneberg
821 A, Ohlsson C. Causal relationship between obesity and serum testosterone status in men: A bi-directional
822 mendelian randomization analysis. *PLoS One.* 2017;12(4):e0176277.
- 823 48. Davey Smith G, Hemani G. Mendelian randomization: genetic anchors for causal inference in
824 epidemiological studies. *Hum Mol Genet.* 2014;23(R1):R89-R98.
- 825 49. Suderman M, Simpkin A, Sharp G, Gaunt T, Lyttleton O, McArdle W, Ring S, Davey Smith G, Relton C.
826 Sex-associated autosomal DNA methylation differences are wide-spread and stable throughout childhood.
827 2017:118265.
- 828 50. Bycroft C, Freeman C, Petkova D, Band G, Elliott LT, Sharp K, Motyer A, Vukcevic D, Delaneau O,
829 O'Connell J, Cortes A, Welsh S, Young A, Effingham M, McVean G, Leslie S, Allen N, Donnelly P, Marchini J.
830 The UK Biobank resource with deep phenotyping and genomic data. *Nature.* 2018;562(7726):203-9.
- 831 51. Vermeulen A, Verdonck L, Kaufman JM. A Critical Evaluation of Simple Methods for the Estimation of
832 Free Testosterone in Serum. *The Journal of Clinical Endocrinology & Metabolism.* 1999;84(10):3666-72.
- 833 52. Emadi-Konjin P, Bain J, Bromberg IL. Evaluation of an algorithm for calculation of serum
834 "Bioavailable" testosterone (BAT). *Clin Biochem.* 2003;36(8):591-6.

- 835 53. Sinnott-Armstrong N, Tanigawa Y, Amar D, Mars NJ, Aguirre M, Venkataraman GR, Wainberg M, Ollila
836 HM, Pirruccello JP, Qian J, Shcherbina A, Rodriguez F, Assimes TL, Agarwala V, Tibshirani R, Hastie T, Ripatti
837 S, Pritchard JK, Daly MJ, Rivas MA. Genetics of 38 blood and urine biomarkers in the UK Biobank.
838 2019:660506.
- 839 54. Watanabe K, Taskesen E, van Bochoven A, Posthuma D. Functional mapping and annotation of
840 genetic associations with FUMA. *Nature Communications*. 2017;8(1):1826.
- 841 55. Kanehisa M, Sato Y, Kawashima M, Furumichi M, Tanabe M. KEGG as a reference resource for gene
842 and protein annotation. *Nucleic Acids Res*. 2015;44(D1):D457-D62.
- 843 56. Pickrell JK, Berisa T, Liu JZ, Séguérel L, Tung JY, Hinds DA. Detection and interpretation of shared
844 genetic influences on 42 human traits. *Nat Genet*. 2016;48(7):709-17.
- 845 57. Benner C, Havulinna AS, Järvelin MR, Salomaa V, Ripatti S, Pirinen M. Prospects of Fine-Mapping
846 Trait-Associated Genomic Regions by Using Summary Statistics from Genome-wide Association Studies. *Am*
847 *J Hum Genet*. 2017;101(4):539-51.
- 848 58. Leinonen JT, Chen Y-C, Pennonen J, Lehtonen L, Junna N, Tukiainen T, Panula P, Widén E. LIN28B
849 affects gene expression at the hypothalamic-pituitary axis and serum testosterone levels. *Sci Rep*.
850 2019;9(1):18060.
- 851 59. Sivakumaran S, Agakov F, Theodoratou E, Prendergast James G, Zgaga L, Manolio T, Rudan I,
852 McKeigue P, Wilson James F, Campbell H. Abundant Pleiotropy in Human Complex Diseases and Traits. *The*
853 *American Journal of Human Genetics*. 2011;89(5):607-18.
- 854 60. Astle WJ, Elding H, Jiang T, Allen D, Ruklisa D, Mann AL, Mead D, Bouman H, Riveros-Mckay F,
855 Kostadima MA, Lambourne JJ, Sivapalaratnam S, Downes K, Kundu K, Bomba L, Berentsen K, Bradley JR,
856 Daugherty LC, Delaneau O, Freson K, Garner SF, Grassi L, Guerrero J, Haimel M, Janssen-Megens EM, Kaan A,
857 Kamat M, Kim B, Mandoli A, Marchini J, Martens JHA, Meacham S, Megy K, O'Connell J, Petersen R, Sharifi N,
858 Sheard SM, Staley JR, Tuna S, van der Ent M, Walter K, Wang S-Y, Wheeler E, Wilder SP, Iotchkova V, Moore
859 C, Sambrook J, Stunnenberg HG, Di Angelantonio E, Kaptoge S, Kuijpers TW, Carrillo-de-Santa-Pau E, Juan D,
860 Rico D, Valencia A, Chen L, Ge B, Vasquez L, Kwan T, Garrido-Martín D, Watt S, Yang Y, Guigo R, Beck S, Paul
861 DS, Pastinen T, Bujold D, Bourque G, Frontini M, Danesh J, Roberts DJ, Ouwehand WH, Butterworth AS,
862 Soranzo N. The Allelic Landscape of Human Blood Cell Trait Variation and Links to Common Complex Disease.
863 *Cell*. 2016;167(5):1415-29.e19.
- 864 61. Hemani G, Zheng J, Elsworth B, Wade KH, Haberland V, Baird D, Laurin C, Burgess S, Bowden J,
865 Langdon R, Tan VY, Yarmolinsky J, Shihab HA, Timpson NJ, Evans DM, Relton C, Martin RM, Davey Smith G,
866 Gaunt TR, Haycock PC. The MR-Base platform supports systematic causal inference across the human
867 phenome. *eLife*. 2018;7:e34408.
- 868 62. Yavorska OO, Burgess S. MendelianRandomization: an R package for performing Mendelian
869 randomization analyses using summarized data. *Int J Epidemiol*. 2017;46(6):1734-9.

870