

EVIDENCE FOR BIOLOGICAL AGE ACCELERATION AND TELOMERE SHORTENING IN COVID-19 SURVIVORS

Alessia Mongelli¹, Veronica Barbi¹, Michela Gottardi Zamperla¹, Sandra Atlante¹, Luana Forleo¹, Marilisa Nesta², Massimo Massetti², Alfredo Pontecorvi², Simona Nanni², Antonella Farsetti³, Oronzo Catalano⁴, Maurizio Bussotti⁵, Laura della Vecchia⁵, Tiziana Bachetti⁶, Fabio Martelli⁷, Maria Teresa La Rovere^{6,8}, Carlo Gaetano^{1,8,*}.

1. Laboratorio di Epigenetica, Istituti Clinici Scientifici Maugeri IRCCS, Via Maugeri 4, 27100, Pavia, Italy
2. Università Cattolica del Sacro Cuore, Policlinico A.Gemelli, Largo S.Vito 1, Roma Italy.
3. Institute for Systems Analysis and Computer Science "A. Ruberti" (IASI), National Research Council (CNR) 00185, Rome, Italy
4. Unità Operativa di Cardiologia Riabilitativa, Istituti Clinici Scientifici Maugeri IRCCS, Via Maugeri 4, 27100 Pavia, Italy
5. Cardiorespiratory Rehabilitation Department, IRCCS Maugeri Clinical Scientific Institutes, Milan. laura.dallavecchia@icsmaugeri.it.
6. Direzione Scientifica, Istituti Clinici Scientifici Maugeri IRCCS, 27100 Pavia, Italy
7. Laboratorio di Cardiologia Molecolare, Policlinico San Donato IRCCS, San Donato Milanese, 20097 Milano; Italy, fabio.martelli@grupposandonato.it
8. Dipartimento di Cardiologia, Istituti Clinici Scientifici Maugeri IRCCS, Montescano (Pavia), 27040 Montescano (Pavia), Italy

*Corresponding

carlo.gaetano@icsmaugeri.it

ABSTRACT

Introduction & Background: the SARS-CoV-2 infection determines the COVID-19 syndrome characterized, in the worst cases, by severe respiratory distress, pulmonary and cardiac fibrosis, inflammatory cytokines release, and immunodepression. This condition has led to the death of about 2.15% of the total infected world population so far. Among survivors, the presence of the so-called post-COVID19 syndrome (PPCS) is a common finding. In patients who survived the SARS-CoV-2 infection, overt PPCS presents one or more symptoms such as fatigue, dyspnea, memory loss, sleep disorders, and difficulty concentrating. The pathophysiology of PPCS is currently poorly understood, and whether epigenetic mechanisms are involved in this process is unexplored.

Methods & Results: In this study, a cohort of 117 COVID19 survivors (post-COVID19) and 144 non-infected volunteers (COVID19-free) were analyzed using pyrosequencing of defined CpG islands previously identified as suitable for biological age determination. Besides, telomere length (TL) and ACE2 and DPP4 receptor expression were determined. The results show a consistent biological age increase in the post-covid population ($58,44 \pm 14,66$ ChronoAge Vs. $67,18 \pm 10,86$ BioAge, $P < 0,0001$), determining a DeltaAge acceleration of $10,45 \pm 7,29$ years ($+5.25$ years above range of normality) compared to $3,68 \pm 8,17$ years for the COVID19-free population ($P < 0,0001$). A significant telomere shortening parallels this finding in the post-COVID19 cohort compared to COVID19-free subjects (post-COVID19 TL: $3,03 \pm 2,39$ Kb vs. COVID19-free: $10,67 \pm 11,69$ Kb; $P < 0,0001$). Additionally, ACE2 expression was decreased in post-COVID19 patients compared to COVID19-free, while DPP-4 did not change.

NOTE: This preprint reports new research that has not been certified by peer review and should not be used to guide clinical practice.

43 **Conclusion:** In light of these observations, we hypothesize that some epigenetic alterations are
44 associated with the post-COVID19 condition, particularly in the younger (<60 years). Although the
45 consequences of such modifications on the long-term clinical outcome remain unclear, they might
46 indicate a direction to investigate the pathophysiological basis of the post-COVID19 syndrome.

47 **Keywords:** biological age, COVID19, post-COVID19, telomeres, epigenetics, DNA methylation,
48 ACE2, DPP-4, Deltage.

49 **Running title:** Biological clock acceleration in younger post-Covid survivors.

50

51 INTRODUCTION

52 In the last trimester of 2019, a new severe acute respiratory syndrome (SARS) outbreak
53 emerged due to a new Coronavirus (SARS-CoV-2) diffusion determining the COVID19 syndrome.
54 At the time of this writing, the virus infected about 143 million worldwide, causing so far >3 million
55 deaths (source: <https://coronavirus.jhu.edu/map.html>). More than 122 million survived the COVID19
56 syndrome (source: <https://www.statista.com/statistics/1087466/covid19-cases-recoveries-deaths-worldwide/>). Not surprisingly, nowadays, more and more frequently, survivors are coming to
57 clinicians' attention for the presence of post-COVID19 symptoms. Among others, the most
58 commonly reported are fatigue, dyspnea, memory loss, sleep disorders, and difficulty concentrating
59 (1), which recently contributed to defining the so-called persistent post-COVID19 syndrome (PPCS)
60 (1).
61 (1).

62 It has been observed that SARS-CoV-2 infected people who developed the adult respiratory
63 distress syndrome (ARDS) also accumulated an excessive deposition of extracellular matrix in the
64 alveolar compartment, causing pulmonary function's worsening (2). Fibrosis accumulation has also
65 been observed in the cardiovascular and nervous systems. The infection frequently caused increased
66 circulating Troponin T and Brain Natriuretic Peptides, suggesting the presence of myocardium
67 damage with possible activation of a remodeling process (3). Besides, a compromised heart function
68 with reduced contractility has often been observed (4). Other effects were on the vascular system and
69 included altering the coagulation cascade and clotting (5). In this case, the fibrinogen pathway's fast
70 activation enhanced the risk of thrombotic events, leading to acute stroke and pulmonary embolism
71 (6)(5). Interestingly, coagulation problems have been seen in post-COVID survivors and in PPCS
72 patients, in which anticoagulants are routinely prescribed.

73 In some COVID19 survivors, also neurological symptoms are present. They diversify going
74 from the most common and light, such as headache, dizziness, anosmia, and dysgeusia, to the most
75 severe ones, including ataxia and epilepsy. This clinical picture has often been associated with a
76 disrupted blood-brain barrier, possibly due to an intense cytokine storm (7)(8). Chronic headaches
77 and neuropathic pain, often localized in the back and neck, have been frequently reported as part of
78 the PPCS and resistant to standard analgesics (9).

79 Similar to what was observed in 2003 SARS and the Middle East respiratory syndrome
80 (MERS) epidemics, in COVID19 survivors, an increase of psychological disorders that include
81 depression, posttraumatic stress, and anxiety has been observed (10). Similar disorders are often
82 present in the general population exposed to stress determined by sociological factors often linked to
83 economic damage or the sudden loss of some beloved ones (10). Remarkably, during the SARS or

84 MERS epidemics, neuropsychiatric symptoms have been reported in hospital workers and caregivers
85 (11). A similar situation has been reported in hospital workers assisting COVID19 patients (12).

86 The COVID19 syndrome also compromises internal organs and apparatuses other than the
87 nervous or cardiovascular systems, including the gastrointestinal tract. Vomiting, diarrhea, and
88 abdominal pain are common in infected people. In PPCS, cholecystitis and mesenteric artery
89 thrombosis have been observed frequently (13). Furthermore, in pediatric patients, increased
90 inflammatory multisystemic syndrome, idiopathic thrombocytopenic purpura, Guillain–Barre
91 syndrome, and autoimmune hemolytic anemia have also been reported (13).

92 Despite all the variety and significance of the symptoms reported by numerous COVID19
93 survivors with or without PPCS, valuable biomolecular markers to monitor this condition are still
94 lacking.

95 Upon SARS-CoV-2 infection, the angiotensin-converting enzyme 2 (ACE2) expression level
96 in the vascular system tends to decrease (14). This enzyme is involved in regulating the renine-
97 angiotensin system (RAS); ACE2 contrasts the activity of the related angiotensin-converting enzyme
98 (ACE) by converting the Angiotensin-II in Angiotensin (1-7) (15)(16). A low expression of ACE2
99 causes an accumulation of Angiotensin II, which may associate with exacerbating conditions leading
100 to hypertension, arrhythmia, cardiac hypertrophy, left ventricular function failure, atherosclerosis,
101 and aortic aneurysms (16). Moreover, ACE2 is negatively correlated with aging; it is relatively
102 abundant in young and healthy people with significantly less risk of CVDs, while a lower quantity
103 has been observed in the elderly (17).

104 The dipeptidyl-peptidase IV (DPP-4) is the receptor of MERS coronavirus (MERS-CoV) and
105 has been reported in some cases to function as a co-receptor of SARS-CoV-2 (18). DPP4 expression
106 increases on the surface of senescent cells (19), and its transmembrane form can cleave many
107 molecules such as chemokines, neuropeptides, and incretin hormones. Because DPP-4 inactivates
108 incretin hormones, high levels of DPP-4 have been observed in patients with type 2 diabetes mellitus
109 and cardiovascular diseases. DPP-4 inhibitors have been used to treat T2DM, cardiac ischemia, and
110 systolic dysfunction (20) (21). Some evidence suggests that DPP-4 inhibitors might reduce the
111 coronavirus's entrance into the airway, envisaging an additional therapeutic tool for COVID19
112 treatment (22). Whether the level of ACE2 and DPP4 in peripheral blood may represent valuable
113 biomarkers to monitor recovery from COVID19 or the onset of PPCS is unclear.

114 In humans, telomere shortening is associated *in vivo* with the aging process, and, *in vitro*, it
115 characterizes the cellular replicative senescence (23). Telomeres possess properties that make them
116 suitable as biomarkers in several diseases or conditions, including cancer, CVDs, or aging (24) (25).
117 The inverse correlation between telomere length (TL) and chronological age has been used for age
118 prediction (26). Interestingly, among individuals infected by Sars-CoV-2, a reduced TL has been
119 associated with the risk of developing more severe symptoms suggesting that TL at the moment of
120 the infection might influence the clinical outcome (27). At present, little is known about the telomere
121 dynamics during Sars-CoV-2 infection and in COVID19 survivors and whether this parameter might
122 help predict the risk of developing PPCS.

123 In recent years, several studies aimed to identify biological or molecular markers of aging that
124 correlate with chronological age and could be helpful to estimate the biological vs. chronological age
125 (28). Some of these parameters have been defined based on modifications of the DNA methylome

126 that correlate with the chronological age and might be used in age prediction models to define the
127 biological age molecularly: the so-called DNAmAge (28). Many of these studies focalized on healthy
128 or diseased individuals for forensic or public health problems (29) (30). Since the seminal Horvath's
129 work (31), several methods have been developed to estimate variation in methylation levels in
130 selected DNA CpGs. These approaches apply to determining DNAmAge and have been used to
131 emphasize the difference with chronological age: the so-called DeltaAge. Some methods are based
132 on evaluating many CpGs, explored using a genome-wide array or next-generation sequencing
133 technologies. However, others have been developed, taking into account a reduced number of CpGs
134 analyzed by pyrosequencing (32)(33)(34). All systems are based on DNA methylation values
135 obtained from whole blood samples. Because of their practicality, several pyrosequencing blood-
136 based age-prediction models became recently popular, especially for forensic applications. These
137 simplified methods have the additional advantage of being rapid and suitable to most laboratory
138 settings without requiring bioinformatics (26)(35). A recent comparative study (36) analyzed the
139 performance of some of these "reductionist" methods and found that the algorithm proposed by
140 Bekaert B. et al., among others, worked well for biological age prediction in young and old subjects.
141 This algorithm considers a prediction result correct for individuals aged 60 or higher when the
142 predicted age matches the chronological age within a ± 5.2 years range (26)(37). Considering that
143 most post-COVID19 subjects fall within age 50 to 60 or higher, this method has been deemed suitable
144 for the present study (26).

145 All the procedures to determine the epigenetic biological clock estimate DNAmAge and
146 DeltaAge. A positive DeltaAge is considered an acceleration of the biological clock, while a negative
147 DeltaAge indicates a bioage younger than the chronological one. In some studies, this parameter
148 turned helpful to evaluate the risk of the onset of cardiovascular and neurodegenerative diseases,
149 cancer, and the occurrence of death by all-cause (38).

150 In infectious diseases, the application of these methods is still limited. However, a DeltaAge
151 acceleration has been observed in people infected by the Human Immunodeficiency Virus (HIV), the
152 Cytomegalovirus, or bacteria such as the *Helicobacter pylori* (38). Besides, in post-mortem brain
153 tissue, the DNAmAge of chronically HIV-positive individuals was higher than negative controls.
154 Interestingly, a partial reversion of the accelerated DNAmAge has been recently observed following
155 antiretroviral therapy (39)(40). Hence, this infection might change the epigenome landscape,
156 potentially enhancing the risk of developing age-related diseases such as neurocognitive disorders
157 (41). Similarly, in people infected by Cytomegalovirus, DNA methylation analyses performed in
158 circulating leucocytes revealed an increased DeltaAge (42). The long-term consequences of these
159 epigenomic alterations remain to be ascertained.

160 The present study investigates whether in COVID19 survivors there is a DNAmAge alteration
161 and a DeltaAge acceleration, which, in association with other molecular parameters such as the
162 telomere length and ACE2 expression in peripheral blood, might typify a set of biomarkers valuable
163 in other studies exploring the risk of PPCS-associated pathophysiological manifestations.

164

165

166

167

168 **RESULTS.**

169 Evaluation of DNAmAge and DeltaAge in COVID19 survivors.

170 A cohort of 117 COVID19 survivors came to the attention of our physicians. Upon approval
171 by the Ethical Committee and informed consent signing, peripheral blood was collected in EDTA
172 vacutainers. A group of 144 age- and sex-matched COVID-free volunteers with some risk factors
173 partially overlapping with the post-COVID19 patients (see Table I) were recruited among the hospital
174 workers and non-COVID patients. Genomic DNA was extracted from the whole blood by a robotized
175 station as described in methods. After bisulfite conversion and PCR amplification, pyrosequencing
176 was performed. DNAmAge calculations were completed according to Bekaert et al. (26). Results
177 indicate that the y-axis intercept differs significantly between the COVID19-free (Fig. 1A) and the
178 post-COVID19 (Fig. 1B) population. The post-COVID19 group intercepted the y-axis at value 35.22,
179 while the COVID19-free at 17.76. This difference determined an increment of DNAmAge of about
180 9 years in the post-COVID19 compared to the same group's chronological age. No difference was
181 appreciable in the controls (Table II). Accordingly, the vast majority (76.6%) of post-COVID19 had
182 an average DelyaAge acceleration of 10.45 years (Figure 2, red dots). Considering that this method
183 has a tolerance of about ± 5.2 years (26)(37), the corrected average accelerated DeltaAge for this group
184 was 5.25. On the contrary, all the COVID19-free volunteers had a DeltaAge of 3.68, falling well into
185 the range of normality (26) (Figure 2, blu squares). The post-COVID19/COVID19-free DeltaAge
186 ratio was 2.84 (Table II). Interestingly, the DeltaAge distribution within the two groups showed that
187 the COVID19-free samples were evenly distributed between the normal (39,9%) and the accelerated
188 range (48.9%) while the 12.8% had a decelerated biological clock. On the contrary, 76.6 % of post-
189 COVID19 had an accelerated DeltaAge, with only the 23.4% falling in the normal or decelerated
190 range (Figure3). Interestingly, while the COVID19-free DeltaAge was distributed evenly among the
191 different age groups, the increase of DeltaAge in the post-COVID19 population belonged to the
192 younger individuals (age 56 ± 12.8 years; Figure 3). This result suggests that the younger survivors
193 might be more sensitive to the SARS-CoV-2-dependent remodeling of the epigenomic landscape
194 (Figure 3A).

195

196 *Table I: Clinical information and risk factors in 117 COVID19 survivors and 144 COVID19-free*
197 *volunteers.*

CLINICAL DATA	COVID19-free	Post-COVID19
BMI \geq 30	9,0%	15,3%
Smokers	37,5%	16,9%
diabetics	11,1%	12,1%
Hypertension	40,3%	36,3%

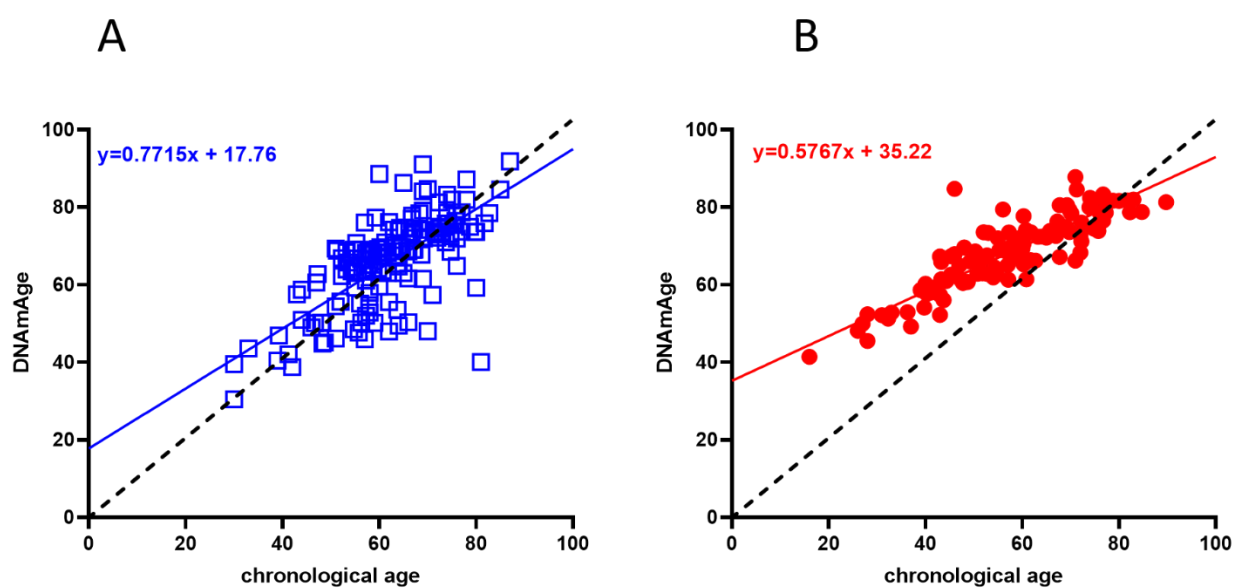
Clinical history of CVDs	33,3%	27,4%
Antecedent lung involvement	1,6%	20,2%
COVID19-related complications		
Pneumonia	/	57,3%
Oxygen therapy	/	52,4%
Artificial ventilation	/	35,5%
Length of viral positivity (average) in weeks	/	4,84

198

199

200

201

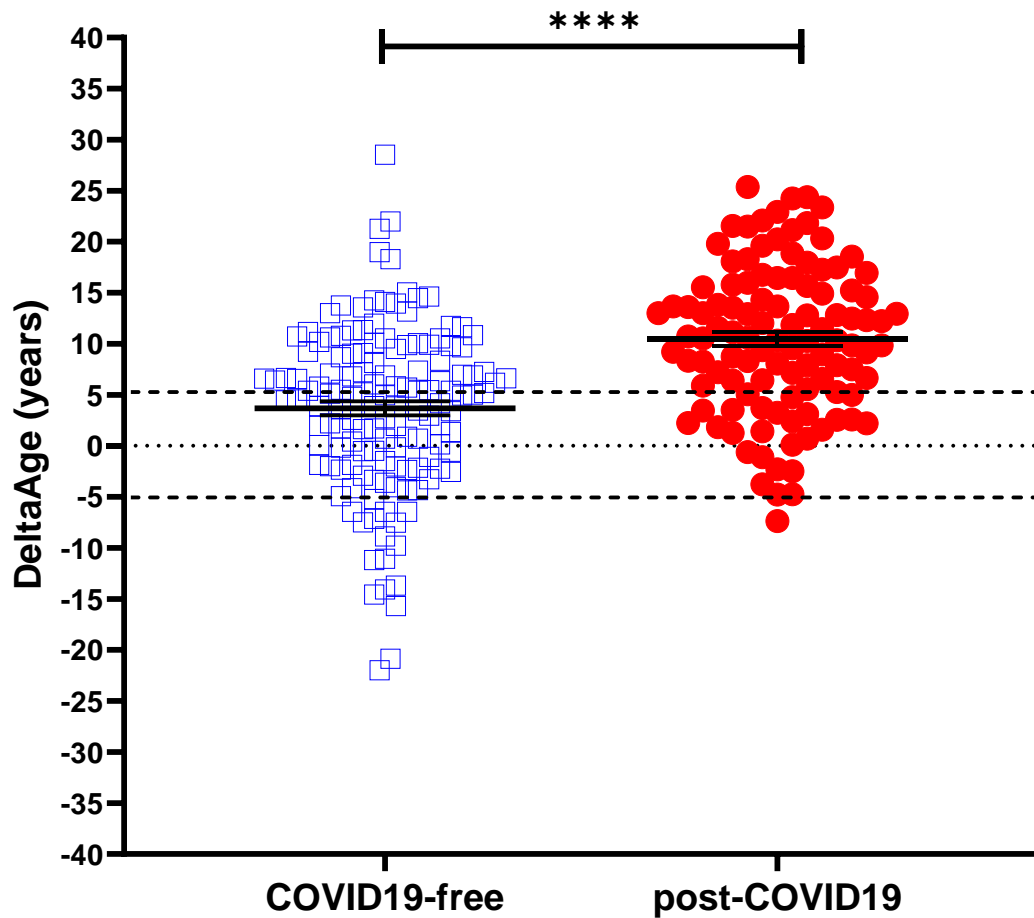


202

203

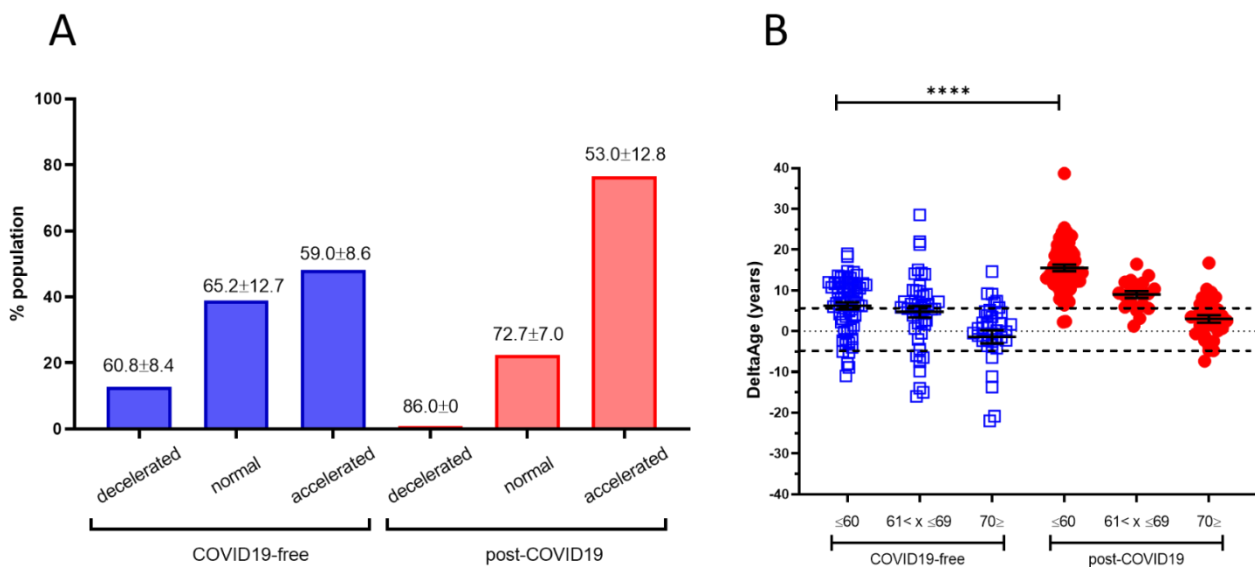
204 **Figure 1.** Biological age determination in COVID-free (blu squares) vs. post-COVID (red dots). A)
205 Linear regression of COVID19-free volunteers DNAmAge. B) Linear regression of DNAmAGE in the
206 post-COVID19 subjects. In both graphs, the black dashed line is the bisector and represents the
207 perfect correlation between chronological and biological age.

208



209

210 **Figure 2.** DeltaAge distribution between COVID-free (left; blu squares) and post-COVID survivors
 211 (right; red dots). The black dashed lines indicate the ± 5 years limit of the normal range according to
 212 the method. P-value of $<0,0001$.



213

214

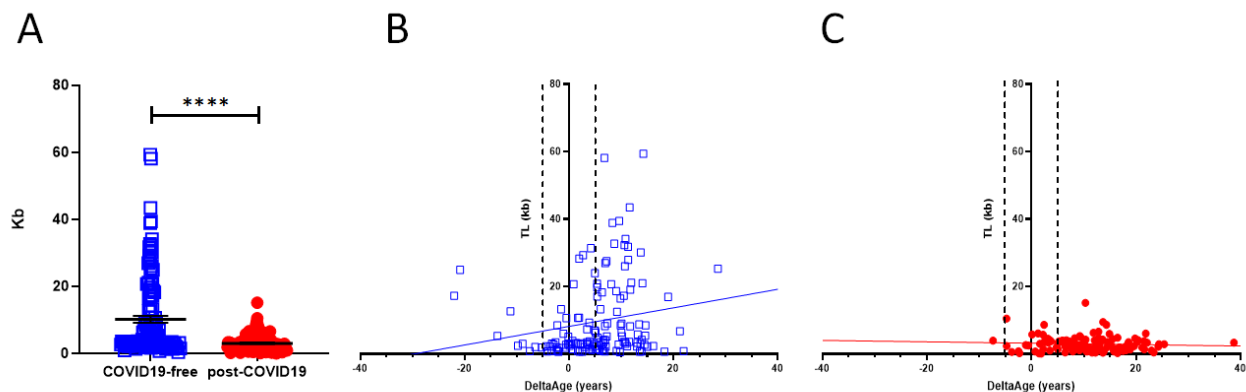
215 **Figure 3.** A) *DeltaAge* range of distribution within each age group. Specifically, in the COVID19-
216 free cohort (blu bars), 12.8% of the participants were decelerated (mean: -8.7 ± 5)*; 39.0% were
217 falling within normality, while 48.2 % presented an accelerated *DeltaAge* (mean: $+5.15 \pm 4.34$).
218 Interestingly, only a negligible portion (0.9%) of post-COVID19 patients (red bars) are in the
219 decelerated range. While 22.5 % were within the normal range, the vast majority (76.6 %) bore an
220 accelerated bioclock (mean: $+8.7 \pm 5.79$). The average chronological age is reported above each bin.
221 * *DeltaAge* mean values are considered after subtraction of the ± 5.2 normality range distribution. B)
222 The graph shows *DeltaAge* distribution according to the different chronological age groups. A
223 significance of $P < 0.0001$ is shown between the younger COVID19-free group (< 60) and the
224 corresponding post-COVID19 patients.

225

226 Telomere length quantification.

227 TL shortening has been reported as a risk factor for developing more severe COVID19 syndrome
228 (27). We investigated this parameter, which is also associated with the progression of the aging
229 process (25). Comparing COVID19-free vs. post-COVID19 individuals revealed the presence of a
230 significant chromosome ends shortness in the COVID19 survivors' group (Figure 4A). Specifically,
231 in the COVID19-free (Fig.4A; blu squares) volunteers, TL was 3.5 fold longer than in the post-
232 COVID19 group (red dots). The correlation between *DeltaAge* distribution and TL indicates that
233 post-COVID19 (Fig. 4B; red dots) compared with the COVID-free (Fig. 4C; blu squares) have shorter
234 telomeres independently by an accelerated *DeltaAge*, suggesting that these two parameters might be
235 independently regulated.

236



237

238 **Figure 3.** A) *Telomere length* analysis in COVID19 survivors (red dots) and COVID-free subjects.
239 The graph shows that the COVID19-free group has longer chromosome ends compared to the post-
240 COVID19. P -value $< 0,0001$. B, C) *Correlation between DeltaAge and TL*. COVID19-free volunteers
241 (B; blu squares) have longer chromosome ends than post-COVID19 (C; red dots) patients
242 independently of *DeltaAge*.

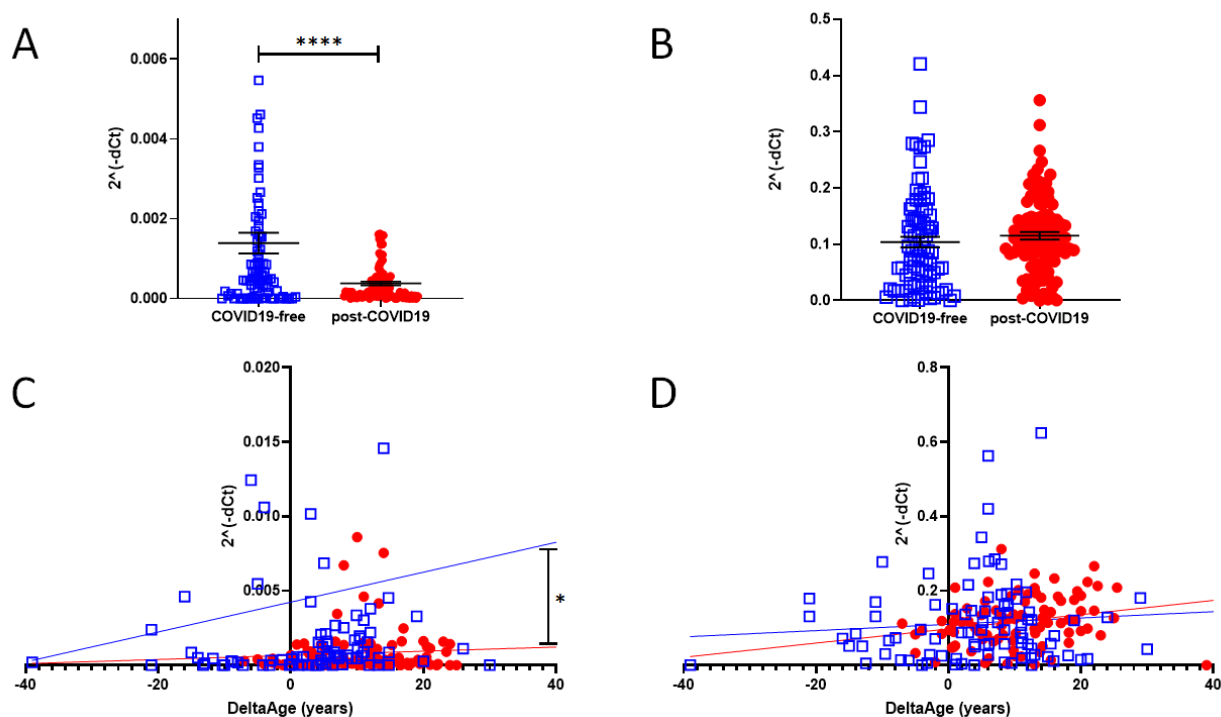
243

244

245

246 Peripheral blood expression of ACE2 and DPP-4

247 In a cell infected by SARS-Cov-2, the ACE2 expression decreases, but little is known about the
248 intensity of this biomarker in post-COVID19 survivors. We evaluated the mRNA level of ACE2
249 (SARS-CoV and SARS-CoV-2 receptor) and DPP-4 (MERS-CoV receptor). The results are shown
250 in Figures 5A and B. In the post-COVID19 population, at the time point in which the blood samples
251 were taken, longer than four weeks from the end of the viral infection (see Table I), ACE2 expression
252 was significantly reduced (Fig. 5A). The expression level of DPP4 was unchanged (Fig. 5B).



253

254 **Figure 5.** A) qPCR determination of ACE2 expression level in COVID19-free (blu squares) and post-
255 COVID19 ($P < 0.0001$). B) mRNA level determination of DPP4 in COVID19-free vs. post-COVID19
256 showing no difference between the two groups. C) Correlation between DeltaAge and the relative
257 expression levels of ACE2 mRNA in the peripheral blood of COVID19-free (blu squares) vs. post-
258 COVID individuals (red dots). D) Correlation between DeltaAge and the relative expression levels
259 of DPP4 mRNA in the peripheral blood of COVID19-free (blu squares) vs. post-COVID individuals
260 (red dots).

261

262

263

264

265

266

267

268 Interestingly, we found that the increased DeltaAge of the post-COVID19 group correlated well with
269 the lowest ACE2 expression level (Fig. 5C; $P < 0.01$). No differences were observed in the distribution
270 of DPP4 by DeltaAge (Fig. 5D).

271

272 **Discussion.**

273 Nowadays, the global vaccination program against the SARS-CoV-2 is actively ongoing, and
274 the incidence of COVID19 will soon decrease sensibly worldwide. Nevertheless, among the millions
275 of COVID19 survivors, many will require long-term assistance due to increased post-COVID19
276 clinical sequelae defined as PPCS (1)(9). Despite the many clinical manifestations associated with
277 PPCS, there is a lack of molecular biomarkers potentially valuable monitoring PPCS evolution. In
278 this study, we took advantage of prior indication that biological age, defined as DNAmAge, could be
279 altered in the presence of viral or bacterial infections (39)(42) (43) and from the fact that shorter
280 telomeres have been associated with the risk of developing a worse COVID19 (27). In this light, we
281 found that a consistently accelerated DeltaAge (+5.22 years above normal range) characterized the
282 post-COVID19 population, and particularly those chronologically under 60 years (Figure 3A and B).
283 This observation was paralleled by a significant telomere shortening (Figure 4). Although the two
284 parameters seem independent (Fig. 4B and C), both alterations coexisted in the post-COVID
285 population. The pathophysiology at the basis of these findings remains unclear; however, they may
286 reflect a modified epigenetic environment, particularly evident among the younger COVID19
287 survivors (Fig.3). It is well known that the progression of aging is associated with critical metabolic
288 changes. Some of these changes occur in the level of metabolites regulating the function of essential
289 epigenetic enzymes, such as in NAD⁺ levels, the cofactor of Sirtuins (44), and in alpha-ketoglutaric
290 acid (45), the cofactor for all dioxygenases, including those deputed to proteins and DNA
291 demethylation (46). Although very speculative, it may be that older adults are relatively less sensitive
292 to SARS-CoV-2-dependent epigenetic changes in consequence of their metabolic landscape.
293 Additional experiments are necessary to elucidate this relevant aspect. In light of this consideration,
294 a further question could be whether epigenetic changes might exist antecedently the first viral contact,
295 persisting perhaps or worsening progressively up to the post-COVID19 period.

296 Several epigenetic phenomena have been associated with the SARS-CoV-2 infection (47),
297 including the epigenetic regulation of ACE2 and IL-6, which has been reported to interest the
298 development of a worse COVID19 due to excessive inflammation (48). Besides, the SARS-CoV-2
299 has been found to induce changes in DNA methylation, which affect the expression of immune
300 response inhibitory genes that could, in part, contribute to the unfavorable progression of COVID-19
301 (49). Finally, it is noteworthy that a recently identified signature made of 44 variably methylated
302 CpGs has been predictive of subjects at risk of developing worse symptoms after SARS-CoV-2
303 infection (50). Interestingly, none of these newly identified CpGs overlap with those involved in the
304 DNAmAge prediction used in this (26) or other studies (31). Hypothetically, it might be possible that
305 distinct signals are regulating the structure of the epigenomic regions determining a higher risk of
306 developing a worse COVID19 syndrome and those associated with DNAmAge prediction.

307 Even though epigenetics might provide clinically relevant information about COVID19 (33)
308 progression, no data is so far available about the involvement of epigenetic processes in the post-
309 COVID19 syndrome or PPCS. In this light, our evidence indicates changes in the methylation level

310 of CpGs associated with biological age calculation. This observation might reflect a more extensive
311 phenomenon underlining unprecedented changes in the epigenome associated with the SARS-CoV-
312 2 infection.

313 The telomere length is a marker of aging: progressive telomere shortening is a well-
314 characterized phenomenon observed in older adults compared to the younger and attributed to the so-
315 called telomeric attrition. This condition is worsened by the absence of telomerase activity
316 physiologically silenced early post-natally and along adulthood (25). An accelerated TL shortening
317 is a parameter associated with an increased risk of developing cardiovascular diseases and other
318 disorders (51). In COVID19, patients bearing shorter telomeres in their peripheral leukocytes have
319 been proposed to risk a worse prognosis (52). In the post-COVID19 group analyzed here, the average
320 TL was $3,03 \pm 2,39$ Kb compared to the $10,67 \pm 11,69$ Kb of the control group ($P < 0.0001$). As shown
321 in Table 2, the chronological ages of the two cohorts were about comparable. Hence it is unlikely that
322 the aging process could have been a determinant eliciting the difference. Accordingly, our results
323 suggest that the observed TL shortening could be independent of DeltaAge (Figure 4B and C),
324 indicating that the SARS-CoV-2 infection might directly contribute to telomere erosion.

325 ACE2 is a crucial component of the SARS-CoV-2 infection process. SARS-CoV-2 uses the
326 ACE2 receptor to invade human alveolar epithelial cells and other cells, including cardiac fibroblasts
327 (53). In infected individuals, ACE2 is often down-regulated due to the infection (14)(48). The enzyme
328 is expressed in several tissues, including alveolar lung cells, gastrointestinal tissue, vascular cells, and
329 the brain; however, it is relatively under-represented in circulating blood cells. In all cases studied,
330 the total relative ACE2 mRNA level in the peripheral blood of non-COVID19 or post-COVID19
331 subjects was significantly lower than that of the MERS-CoV receptor DPP4. However, in the post-
332 COVID19 group, the ACE2 mRNA expression was reduced significantly compared to controls, while
333 DPP4 elicited similar expression levels in both groups. Interestingly, the accelerated DeltaAge,
334 predominant in the younger Post-COVID19 survivors, significantly correlated with the lower ACE2
335 mRNA level, suggesting for an adverse effect of DNAmAge on ACE2 density in peripheral blood
336 (Figure 5B and C).

337 The two groups considered in this study were not significantly different in terms of age, sex,
338 and known clinical conditions before SARS-CoV-2 infection except for a relatively higher incidence
339 of BMI>30 (15.3% vs. 9%) in the post-COVID19 population compared to controls as well as for a
340 record of more frequent lung diseases (20.2% vs. 1.6%; see Table I). The origin of the persistent
341 reduction in ACE2 expression in the post-COVID19 group remains unsolved, and a longitudinal
342 study should be performed monitoring this parameter.

343 **Conclusions.**

344 This study has many limitations, such as the limited numerosity of subjects investigated and the low
345 number of CpGs considered. However, it shows that individuals belonging to a group of COVID19
346 survivors had in common a significant acceleration of their biological age, occurring mainly in the
347 younger individuals. For the first time, this type of information has been correlated with TL
348 shortening and the expression of ACE2 mRNA. It is too early to extrapolate whether relevant clinical
349 indications may arise from this and other studies assessing the role of epigenetic changes in COVID19
350 syndrome (50) (49). Nevertheless, a warning might be raised that sequelae of SARS-CoV-2 infection
351 might rely on persistent epigenomic modifications, possibly underlying the presence of a COVID19

352 epigenetic memory. The epigenomic landscape of actual post-COVID19 survivors and in future
 353 COVID19 survivors from SARS-CoV-2 variants should also be taken under consideration to gain
 354 predictive prognosis insights and to monitor the response to treatment.

355

356

Table II: Summary

	COVID19-free	Post-COVID19	P-VALUE
Samples (n)	144 (Male 66,0 %; Female 34,0%)	117 (Male 60,7%; Female 39,3%)	
Chronological age (years)	62,48 ± 9,04	58,44 ± 14,66	Ns
Biological age (years)	63,81 ± 13,66	67,18 ± 10,86	Ns
Chronological Vs Biological (p-value)	Ns	<0,0001	
DeltaAge (years)	3,68 ± 8,17	10,45 ± 7,29	<0,0001
Ratio	1	2.84	
DeltaAge distribution			
Decelerated (%)	12,8	0,9	
Normal (%)	39,0	22,5	
Accelerated (%)	48,2	76,6	
Telomere length (kb)	10,67 ± 11,69	3,03 ± 2,39	<0,0001
ACE2 expression (2 ^{^(-dct)})	0,001390 ± 0,002298	0,0003801 ± 0,0004463	<0,0001
DPP4 expression (2 ^{^(-dct)})	0,1038 ± 0,089	0,1152 ± 0,069	ns

357

358

359

360 **Materials and methods.**

361 The samples have been classified into two groups: COVID19-free (n= 144), a heterogeneous group
362 that includes healthies, cardiovascular diseases, and obstructive sleep apnea patients, while the post-
363 COVID19 group includes all of the previous patients who had SARS-CoV-2 infection (n= 117). The
364 clinical features of both populations are summarised in Table 2.

365 DNA extraction from whole blood.

366 Blood samples collected in EDTA and 200 ul have been used to perform the extraction using QIAmp
367 DNA Blood Mini Kit (Qiagen, cat. 55106) associated with automated system QIAcube (Qiagen, cat.
368 9002160) according to manufacturer instructions. Then 2ul of DNA has been quantified with
369 QIAxpert (Qiagen, cat. 9002340)

370 Bisulfite Conversion.

371 1ug of DNA has been used to convert with Epiect fast DNA bisulfite (Qiagen, cat. 59824) following
372 the manufacturer instructions associated with RotorGene 2plex HRM (Qiagen, cat.9001560) and
373 QIAcube automated system. Then 2ul of converted DNA has been quantified with QIAxpert.

374 Polymerase chain reactions for pyrosequencing.

375 PCR reaction mixes were performed using PyroMark PCR kit (Qiagen, cat. 978103) following the
376 manufacturer's instructions. The sequences of primer used are available on Supplementary methods.

377 Pyrosequencing.

378 The amplicons have been sequenced in order to check the level of methylation in each CpG site.
379 PyroMark Q24 Advanced Reagents (Qiagen, cat. 970902) have been loaded in the PyroMark Q24
380 Cartridge (Qiagen, cat.979202) following the manufacturer instructions, and 5ul of PCR product has
381 been added to the reaction mix: Pyromark Binding Buffer (supplied in PyroMark Q24 Advanced
382 Reagents kit), StreptavidinSepharose High performance (GE Healthcare, cat. GE17-5113-01) and
383 H2O DNase/RNase free.

384 Then the samples have been shacked at room temperature for 15 minutes at 1400rpm.
385 Successively, the samples have been undergone to PyroMark Q24 Vacuum Station (Qiagen, cat.
386 9001515) procedure in which the target sequences have been purified and put into an annealing buffer
387 containing the sequencing primer [0,375 uM]. The sequences of oligos are available in supplementary
388 data. The plate containing the sequence to analyze and the primer has been heated at 80°C for
389 5minutes. Successively, the PyroMark Q24 Advanced (Qiagen, cat. 9001514) has been set to analyze
390 the target sequences (Supplementary methods).

391 DNAmAge estimation.

392 Bekaert's algorithm has been used to estimate the biological age of the sample (26). The complete
393 formula has been reported by Daunay et al. (37)as follows:

394 $26.44119 - 0.201902 * ASPA - 0.239205 * EDARADD + 0.0063745 * ELOVL22 + 0.6352654 * PDE4C$

395

396 Telomere length quantification.

397 The chromosome end has been quantified by PCR Real-Time of Absolute Human Telomere Length
398 Quantification qPCR Assay Kit (ScienCell, cat. 8918) following the manufacturer's instructions.
399

400 RNA extraction.

401 According to manufacturer instruction, the total RNA has been isolated from whole blood using
402 QIAmp RNA blood mini (Qiagen, cat. 52304) and automatized extractor QIACube. The RNA has
403 been quantified with QIAxpert.

404 cDNA synthesis and qPCR Real-Time.

405 Omniscript RT kit (Qiagen, cat. 205113) has been used to convert total RNA into cDNA following
406 the manufacturer's instructions.

407 The qPCR RealTime has been performed on RotorGene 2plex HRM using the RT2 SYBR Green
408 ROX FAST Mastermix (Qiagen, cat 330620). The sequences of primers are available on
409 supplementary data. To perform the amplification; the machine has been set:

410 Initial denaturation: 95° C, 5 minutes;

411 Denaturation: 95° C, 15 seconds;

412 Annealing: 60° C, 30 seconds;

413 Elongation: 72° C, 30 seconds;

414 Final elongation: 72° C, 1 minute.

415 Denaturation, annealing, and elongation have been repeated for 45 times.

416

417 Data analysis.

418 All data has been analyzed with GraphPad Prism 8.4.3

419 List of abbreviations:

420 adult respiratory distress syndrome (ARDS)

421 angiotensin-converting enzyme 2 (ACE2)

422 biological age based on DNA methylation (DNAmAge)

423 cardiovascular diseases (CVDs)

424 coronavirus disease 19 (COVID19)

425 Cytosine-Guanosine dinucleotides (CpGs)

426 dipeptidyl-peptidase IV (DPP-4)

427 Middle East respiratory syndrome (MERS)

428 MERS coronavirus (MERS-CoV)

429 persistent post-COVID19 syndrome (PPCS)

430 renine- angiotensine system (RAS)

431 severe acute respiratory syndrome (SARS)

432 severe acute respiratory syndrome CoronaVirus 2 (SARS-CoV-2)

433 Telomere length (TL)

434 type 2 diabetes mellitus (T2DM)

435 Declarations:

- 436 • This study have been approved by the Ethical committee of Istituti Clinici Scientifici
437 Maugeri Spa SB di Pavia. Document: METH-COVID19 - Studio epigenetico sulle
438 conseguenze dell'infezione da SarsCoV-2 (ID: 2543 CE)

439

440

441 REFERENCES

- 442 1. Oronsky B, Larson C, Hammond TC, Oronsky A, Kesari S, Lybeck M, et al. A Review of
443 Persistent Post-COVID Syndrome (PPCS). *Clin Rev Allergy Immunol* [Internet].
444 2021;(0123456789). Available from: <http://www.ncbi.nlm.nih.gov/pubmed/33609255>
- 445 2. Heshui Shi*, Xiaoyu Han*, Nanchuan Jiang*, Yukun Cao, Osamah Alwalid, Jin Gu,
446 Yanqing Fan† CZ, Summary. Radiological findings from 81 patients with COVID-19
447 pneumonia in Wuhan, China: a descriptive study. 2020;(January):19–21.
- 448 3. Bansal M. Cardiovascular disease and COVID-19. *Diabetes Metab Syndr*.
449 2020;14(4)(January):337–9.
- 450 4. Tan W, Aboulhosn J. The cardiovascular burden of coronavirus disease 2019 (COVID-19)
451 with a focus on congenital heart disease. 2020;(January).
- 452 5. Kloka FA, Kruipb MJHA, Meerc NJM van der, Arbousd MS, Gommerce DAMPJ, Kantf
453 KM, et al. incidence of thrombotic complications in critically ill ICU patients with COVID-
454 19. 2020;(January).
- 455 6. Walkey AJ, Summer R, Ho V, Alkana P. Acute respiratory distress syndrome: Epidemiology
456 and management approaches. *Clin Epidemiol*. 2012;4(1):159–69.
- 457 7. Zimba DPM& VA& AYG& O. Rheumatologists' perspective on coronavirus disease 19
458 (COVID-19) and potential therapeutic targets. *J Med Virol* [Internet].
459 2020;40(April):202005615. Available from:
460 <https://doi.org/10.1016/j.autrev.2020.102568>
461 <https://doi.org/10.1016/j.ijantimicag.2020.105954>
462 <https://doi.org/10.1007/s40261-020-00917-3>
463 <https://doi.org/10.1016/j.jcv.2020.104444>
<http://www.ncbi.nlm.nih.gov/pubmed/32359035>
<https://doi.org/10.1016/j.jcv.2020.104444>
- 464 8. Thepmankorn P, Bach J, Lasfar A, Zhao X, Souayah S. Cytokine storm induced by SARS-
465 CoV-2 infection: The spectrum of its neurological manifestations. 2020;(January).
- 466 9. Walitt B, Bartrum E. A clinical primer for the expected and potential. 2021;6:1–7.
- 467 10. Lai J, Ma S, Wang Y, Cai Z, Hu J, Wei N, et al. Factors Associated With Mental Health
468 Outcomes Among Health Care Workers Exposed to Coronavirus Disease 2019. *JAMA Netw*
469 *open*. 2020;3(3):e203976.
- 470 11. Liu X, Kakade M, Fuller CJ, Fan B, Fang Y, Kong J, et al. Depression after exposure to
471 stressful events: Lessons learned from the severe acute respiratory syndrome epidemic.
472 *Compr Psychiatry*. 2012;53(1):15–23.
- 473 12. Alexopoulos P, Soldatos R, Kontogianni E, Frouda M, Loanna Aligianni S, Skondra M, et al.
474 COVID-19 Crisis Effects on Caregiver Distress in Neurocognitive Disorder. *J Alzheimers*
475 *Dis*. 2021;79(1):459–66.
- 476 13. Raseen Tariq, MBBS; Srishti Saha, MBBS, MD; Fateeha Furqan M, Leslie Hassett, MLS;
477 Darrell Pardi, MD, MS; and Sahil Khanna, MBBS MA. Prevalence and Mortality of COVID-
478 19 Patients With Gastrointestinal Symptoms: A Systematic Review and Meta-analysis.
479 2020;21(1):1–9.
- 480 14. Gue YX, Gorog DA. Reduction in ACE2 may mediate the prothrombotic phenotype in
481 COVID-19. *Eur Heart J*. 2020;41(33):3198–9.
- 482 15. Xiao C. Li1,* , Jianfeng Zhang2,* and JLZ. The vasoprotective axes of the renin-angiotensin

- 483 system: physiological relevance and therapeutic implications in cardiovascular, hypertensive
484 and kidney diseases. *Physiol Behav.* 2016;176(1):139–48.
- 485 16. Wu CH, Mohammadmoradi S, Chen JZ, Sawada H, Daugherty A, Lu HS. Renin-angiotensin
486 system and cardiovascular functions. *Arterioscler Thromb Vasc Biol.* 2018;38(7):E108–16.
- 487 17. Sargiacomo C, Sotgia F, Lisanti MP. COVID-19 and chronological aging: Senolytics and
488 other anti-aging drugs for the treatment or prevention of corona virus infection? *Aging*
489 (Albany NY). 2020;12(8):6511–7.
- 490 18. Wang N, Shi X, Jiang L, Zhang S, Wang D, Tong P, et al. Structure of MERS-CoV spike
491 receptor-binding domain complexed with human receptor DPP4. *Cell Res [Internet].*
492 2013;23(8):986–93. Available from: <http://dx.doi.org/10.1038/cr.2013.92>
- 493 19. Kim KM, Noh JH, Bodogai M, Martindale JL, Yang X, Indig FE, et al. Identification of
494 senescent cell surface targetable protein DPP4. *Genes Dev.* 2017;31(15):1529–34.
- 495 20. Enz N, Vliegen G, De Meester I, Jungraithmayr W. CD26/DPP4 - a potential biomarker and
496 target for cancer therapy. *Pharmacol Ther [Internet].* 2019;198:135–59. Available from:
497 <https://doi.org/10.1016/j.pharmthera.2019.02.015>
- 498 21. Suda M, Shimizu I, Yoshida Y, Hayashi Y, Ikegami R, Katsuomi G, et al. Inhibition of
499 dipeptidyl peptidase-4 ameliorates cardiac ischemia and systolic dysfunction by up-
500 regulating the FGF-2/EGR-1 pathway. *PLoS One.* 2017;12(8):1–18.
- 501 22. Solerte SB, Di Sabatino A, Galli M, Fiorina P. Dipeptidyl peptidase-4 (DPP4) inhibition in
502 COVID-19. *Acta Diabetol [Internet].* 2020;57(7):779–83. Available from:
503 <https://doi.org/10.1007/s00592-020-01539-z>
- 504 23. HAYFLICK L, MOORHEAD PS. The serial cultivation of human diploid cell strains. *Exp*
505 *Cell Res.* 1961 Dec;25:585–621.
- 506 24. Zhan Y, Hägg S. Telomere length and cardiovascular disease risk. *Curr Opin Cardiol.* 2019
507 May;34(3):270–4.
- 508 25. Bekaert S, De Meyer T, Van Oostveldt P. Telomere attrition as ageing biomarker. *Anticancer*
509 *Res.* 2005;25(4):3011–22.
- 510 26. Bekaert B, Kamalandua A, Zapico SC, Van De Voorde W, Decorte R. Improved age
511 determination of blood and teeth samples using a selected set of DNA methylation markers.
512 *Epigenetics.* 2015;10(10):922–30.
- 513 27. Froidure A, Mahieu M, Hoton D, Laterre PF, Yombi JC, Koenig S, et al. Short telomeres
514 increase the risk of severe COVID-19. *Aging (Albany NY).* 2020;12(20):19911–22.
- 515 28. Horvath S, Raj K. DNA methylation-based biomarkers and the epigenetic clock theory of
516 ageing. *Nat Rev Genet.* 2018 Jun;19(6):371–84.
- 517 29. C Zapico S, Ubelaker DH. Applications of physiological bases of ageing to forensic sciences.
518 Estimation of age-at-death. *Ageing Res Rev.* 2013 Mar;12(2):605–17.
- 519 30. Jylhävä J, Pedersen NL, Hägg S. Biological Age Predictors. *EBioMedicine.* 2017 Jul;21:29–
520 36.
- 521 31. Horvath S. DNA methylation age of human tissues and cell types. *Genome Biol.*
522 2013;14(10).
- 523 32. Jung S-E, Shin K-J, Lee HY. DNA methylation-based age prediction from various tissues

- 524 and body fluids. *BMB Rep.* 2017 Nov;50(11):546–53.
- 525 33. Vidaki A, Kayser M. Recent progress, methods and perspectives in forensic epigenetics.
526 *Forensic Sci Int Genet.* 2018 Nov;37:180–95.
- 527 34. Zubakov D, Liu F, Kokmeijer I, Choi Y, van Meurs JBJ, van IJcken WFJ, et al. Human age
528 estimation from blood using mRNA, DNA methylation, DNA rearrangement, and telomere
529 length. *Forensic Sci Int Genet.* 2016 Sep;24:33–43.
- 530 35. Weidner CI, Lin Q, Koch CM, Eisele L, Beier F, Ziegler P, et al. aging of blood can be
531 tracked by DNA methylation changes at just three CpG sites. *Genome Biol.* 2014
532 Feb;15(2):R24.
- 533 36. Daunay A, Baudrin LG, Deleuze J-F, How-Kit A. Evaluation of six blood-based age
534 prediction models using DNA methylation analysis by pyrosequencing. *Sci Rep.* 2019
535 Jun;9(1):8862.
- 536 37. Daunay A, Baudrin LG, Deleuze JF, How-Kit A. Evaluation of six blood-based age
537 prediction models using DNA methylation analysis by pyrosequencing. *Sci Rep.*
538 2019;9(1):1–10.
- 539 38. Declerck K, Vanden Berghe W. Back to the future: Epigenetic clock plasticity towards
540 healthy aging. *Mech Ageing Dev [Internet].* 2018;174(January):18–29. Available from:
541 <https://doi.org/10.1016/j.mad.2018.01.002>
- 542 39. Horvath S, Levine AJ. HIV-1 infection accelerates age according to the epigenetic clock. *J*
543 *Infect Dis.* 2015;212(10):1563–73.
- 544 40. Esteban-cantos A, Rodríguez-centeno J, Barruz P, Alejos B, Saiz-medrano G, Nevado J, et
545 al. Epigenetic age acceleration changes 2 years after antiretroviral therapy initiation in adults
546 with HIV : a substudy of the NEAT001 / ANRS143 randomised trial. 2021;197–205.
- 547 41. Levine AJ, Quach A, Moore DJ, Achim CL, Soontornniyomkij V, Masliah E, et al.
548 Accelerated epigenetic aging in brain is associated with pre-mortem HIV-associated
549 neurocognitive disorders. *J Neurovirol [Internet].* 2016;22(3):366–75. Available from:
550 <http://dx.doi.org/10.1007/s13365-015-0406-3>
- 551 42. Kananen L, Nevalainen T, Jylhävä J, Marttila S, Hervonen A, Jylhä M, et al.
552 Cytomegalovirus infection accelerates epigenetic aging. *Exp Gerontol [Internet].*
553 2015;72:227–9. Available from: <http://dx.doi.org/10.1016/j.exger.2015.10.008>
- 554 43. Sabry D, Ahmed R, Abdalla S, Fathy W, Eldemery A, Elamir A. Braf, Kras and *Helicobacter*
555 *pylori* epigenetic changes-associated chronic gastritis in Egyptian patients with and without
556 gastric cancer. *World J Microbiol Biotechnol.* 2016;32(6):1–8.
- 557 44. Bonkowski MS, Sinclair DA. Slowing ageing by design: the rise of NAD(+) and sirtuin-
558 activating compounds. *Nat Rev Mol Cell Biol.* 2016 Nov;17(11):679–90.
- 559 45. Asadi Shahmirzadi A, Edgar D, Liao C-Y, Hsu Y-M, Lucanic M, Asadi Shahmirzadi A, et
560 al. Alpha-Ketoglutarate, an Endogenous Metabolite, Extends Lifespan and Compresses
561 Morbidity in Aging Mice. *Cell Metab.* 2020 Sep;32(3):447-456.e6.
- 562 46. Ito S, D'Alessio AC, Taranova O V, Hong K, Sowers LC, Zhang Y. Role of Tet proteins in
563 5mC to 5hmC conversion, ES-cell self-renewal and inner cell mass specification. *Nature.*
564 2010 Aug;466(7310):1129–33.
- 565 47. Atlante S, Mongelli A, Barbi V, Martelli F, Farsetti A, Gaetano C. The epigenetic
566 implication in coronavirus infection and therapy. *Clin Epigenetics.* 2020;12(1).

- 567 48. Sang ER, Tian Y, Miller LC. Epigenetic Evolution of ACE2 and IL-6 Genes: Non-Canonical
568 Interferon-Stimulated Genes Correlate to COVID-19 Susceptibility in Vertebrates. 2021;
- 569 49. Li S, Ma F, Yokota T, Garcia G, Palermo A, Wang Y, et al. Metabolic reprogramming and
570 epigenetic changes of vital organs in SARS-CoV-2–induced systemic toxicity. *JCI Insight*.
571 2021;6(2):1–18.
- 572 50. Castro de Moura M, Davalos V, Planas-Serra L, Alvarez-Errico D, Arribas C, Ruiz M,
573 Aguilera-Albesa S, Troya J, Valencia-Ramos J, Vélez-Santamaria V, Rodríguez-Palmero A,
574 Villar-Garcia J, Horcajada JP, Albu S, Casasnovas C, Rull A, Reverte L, Dietl B, Dalm EM.
575 Epigenome-wide association study of COVID-19 severity with respiratory failure.
576 *EBioMedicine*. 2021;
- 577 51. Cheng F, Carroll L, Joglekar M V, Januszewski AS, Wong KK, Hardikar AA, et al. Diabetes,
578 metabolic disease, and telomere length. *lancet Diabetes Endocrinol*. 2021 Feb;9(2):117–26.
- 579 52. Sanchez-Vazquez R, Guío-Carrión A, Zapatero-Gaviria A, Martínez P, Blasco MA. Shorter
580 telomere lengths in patients with severe COVID-19 disease. *Aging (Albany NY)*. 2021
581 Jan;13(1):1–15.
- 582 53. Amendola A, Garoffolo G, Songia P, Nardacci R, Ferrari S, Bernava G, et al. Human
583 cardiosphere-derived stromal cells exposed to SARS-CoV-2 evolve into hyper-
584 inflammatory/pro-fibrotic phenotype and produce infective viral particles depending on the
585 levels of ACE2 receptor expression. *Cardiovasc Res*. 2021 Mar;
- 586