

## **Abnormalities in migration of neural precursor cells in familial bipolar disorder**

Salil K. Sukumaran<sup>1</sup>, Pradip Paul<sup>1</sup>, Vishwesh Guttal<sup>2, 3</sup>, Bharath Holla<sup>4</sup>, Alekhya Vemula<sup>1</sup>, Harsimar Bhatt<sup>1</sup>, Piyush Bisht<sup>1</sup>, Kezia Mathew<sup>1</sup>, Ravi K Nadella<sup>1</sup>, Anu Mary Varghese<sup>5</sup>, Vijayalakshmi K<sup>5</sup>, Meera Purushottam<sup>1</sup>, Sanjeev Jain<sup>1</sup>, ADBS Consortium<sup>#</sup>, Reeteka Sud<sup>1\*</sup>, Biju Viswanath<sup>1\*</sup>

\*Co-corresponding authors

Author affiliations:

<sup>1</sup> Dept. of Psychiatry, National Institute of Mental Health and Neurosciences, Bangalore

<sup>2</sup> Centre for Ecological Sciences, Indian Institute of Science, Bangalore

<sup>3</sup> Centre for Biosystems and Bioengineering, Indian Institute of Science, Bangalore

<sup>4</sup> Dept. of Integrative Medicine, National Institute of Mental Health and Neurosciences, Bangalore

<sup>5</sup> Dept. of Neurophysiology, National Institute of Mental Health and Neurosciences, Bangalore

### **Address for correspondence:**

Department of Psychiatry

National Institute of Mental Health and Neurosciences

Hosur Road, Bangalore – 560029

Ph: 08026995791

Reeteka Sud (ORCID:0000-0002-7866-6983)

Biju Viswanath (ORCID:0000-0002-7317-1789)

Emails: [bijuv1@gmail.com](mailto:bijuv1@gmail.com); [reeteka@gmail.com](mailto:reeteka@gmail.com)

<sup>#</sup>Accelerator Program for Discovery in Brain disorders using Stem cells (ADBS) Consortium

Biju Viswanath<sup>1</sup>, Naren P. Rao<sup>1</sup>, Janardhanan C. Narayanaswamy<sup>1</sup>, Palanimuthu T. Sivakumar<sup>1</sup>, Arun Kandasamy<sup>1</sup>, Muralidharan Kesavan<sup>1</sup>, Urvakhsh Meherwan Mehta<sup>1</sup>,

Ganesan Venkatasubramanian<sup>1</sup>, John P. John<sup>1</sup>, Meera Purushottam<sup>1</sup>, Odity Mukherjee<sup>2</sup>, Bhupesh Mehta<sup>1</sup>, Thennarasu Kandavel<sup>1</sup>, B. Binukumar<sup>1</sup>, Jitender Saini<sup>1</sup>, Deepak Jayarajan<sup>1</sup>, A. Shyamsundar<sup>1</sup>, Sydney Moirangthem<sup>1</sup>, K. G. Vijay Kumar<sup>1</sup>, Jayant Mahadevan<sup>1</sup>, Bharath Holla<sup>1</sup>, Jagadisha Thirthalli<sup>1</sup>, Prabha S. Chandra<sup>1</sup>, Bangalore N. Gangadhar<sup>1</sup>, Pratima Murthy<sup>1</sup>, Mitradas M. Panicker<sup>3</sup>, Upinder S. Bhalla<sup>3</sup>, Sumantra Chattarji<sup>2</sup>, Vivek Benegal<sup>1</sup>, Mathew Varghese<sup>1</sup>, Janardhan Y. C. Reddy<sup>1</sup>, Raghu Padinjat<sup>3</sup>, Mahendra Rao<sup>2</sup>, Sanjeev Jain<sup>1</sup>,

1. National Institute of Mental Health and Neurosciences (NIMHANS), India

2. Institute for Stem Cell Biology and Regenerative Medicine (InStem), India

3. National Center for Biological Sciences (NCBS), India

**Keywords:** Bipolar disorder, cell migration, EGF/ERBB signaling, mean-squared displacement, genetics, brain structure.

## **SUMMARY STATEMENT**

We report abnormal cell migration patterns in neural precursors derived from bipolar disorder patients, which could contribute to already known structural changes in the brain.

## ABSTRACT

Cellular migration is a ubiquitous feature that brings brain cells into appropriate spatial relationships over time; and it helps in the formation of a functional brain. We studied the migration patterns of induced pluripotent stem cell (iPSC)-derived neural precursor cells (NPCs) from individuals with familial bipolar disorder (BD), in comparison with healthy control. The BD patients also had morphological brain abnormalities in magnetic resonance imaging. Time-lapse analysis of migrating cells was conducted, through which we were able to identify several parameters to be abnormal in cellular migration, including the speed and directionality of NPCs. We also performed transcriptomic analysis to probe the mechanisms behind aberrant cellular phenotype identified. Our analysis showed downregulation of a network of genes, centering on EGF/ERBB proteins. Present findings indicate that collective, systemic dysregulation may produce the aberrant cellular phenotype; which could contribute to the functional and structural changes in the brain, reported in bipolar disorder.

## 1. Introduction

Bipolar disorder (BD) is a severe disabling psychiatric illness with a genetic basis, and neurodevelopmental origins [Gandal et al., 2018]. Many of the identified genes in BD risk are implicated in neurodevelopmental processes and variations in brain morphology [Mühleisen et al., 2018; Ganesh et al., 2019; Dai et al., 2020; Ithal et al., 2021]. Multiple studies have documented abnormalities in brain structure in BD [Magioncalda and Martino, 2021] including smaller brain size, reduced cortical gray and white matter [Ching et al., 2020], cortical thinning [Hibar et al., 2018], and decreased interneurons in the cerebral cortex and hippocampus [Harrison et al., 2020]. Cortical plasticity would also mediate the structural alterations and cognitive changes, seen over the life span in those with BD [Van Rheenen et al., 2020]. Such brain changes in BD have also been shown to be predicted by genetic risk [Abé et al., 2020].

One method to interrogate cellular alterations related to brain abnormalities is to study induced pluripotent stem cells (IPSCs) derived from patients, in whom changes have been detected on brain imaging. Although a direct link is difficult, this could help to identify potential contributory mechanisms to brain abnormalities. Previous IPSC-based studies have uncovered that BD pathogenesis is associated with differences in (a) expression of ion channels and membrane-bound receptors in neurons [Chen et al., 2014]; (b) neurogenesis and expression of genes of the WNT signaling [Madison et al., 2015]; and (c) mitochondrial abnormalities in patient-derived neurons [Mertens et al., 2015], as well as neural precursors [Paul et al., 2020; Osete et al., 2021].

Previous attempts to integrate human brain imaging with IPSC experiments in psychiatry [Johnstone et al., 2019; Vasistha et al., 2019] evaluated persons from multiple affected families with schizophrenia. Johnstone et al., (2019) showed reduction of cortical brain volumes with abnormal proliferation of neural precursor cells (NPCs), whereas Vasistha et al., (2019) showed oligodendrocyte proliferation and morphology deficits in individuals who had white matter alterations in the brain using diffusion tensor imaging. In addition, there is indirect evidence on the role of neuronal migration defects in BD [Uribe and Wix, 2012; Tabares-Seisdedos et al., 2006]. But there is no direct evidence on the migration defects that could contribute to bipolar disorder.

Here, we have performed a pilot study using iPSC-derived NPCs from a single family with two BD patients who had abnormal MRI scans. We have previously reported rare damaging variants related to cellular migration in these patients [Paul et al., 2020, supplementary table 1]. We hypothesized that there would be migration abnormalities in iPSC-derived NPCs of these patients. We find that both patient-derived NPCs displayed greater quasi-Brownian randomness in migration patterns, unlike the relatively directed movements in the control NPCs. Transcriptome analysis revealed expression changes in several genes known to regulate cellular migration, implicating the EGF/ERBB signaling pathway.

## 2. Results

### 2.1 Morphological changes observed on MRIs in brains of BD patients

In the scans of patient B1, we found that all tissue-specific brain volumes were below the 5th centile, demonstrating a clear deviation from age-related trends. In B2, lower gray matter (cortical at 10th centile and subcortical at ~ 1/3rd centile) was detected, but the white matter volumes (~50th centile) did not differ from age-related trends (Fig. 1A).

### 2.2 Aberrant cellular migration in patient-derived neural precursors

Visual inspection revealed that cells from C1 line migrate in a directed manner; while B1 and B2 lines moved in a random (Brownian) manner throughout the duration of the experiment (Fig. 1D). The patient-derived lines also showed mixed patterns in the direction of migration: cells migrated in circular tracks as well as back-and-forth, in addition to some that migrated in a directed pattern (Fig. 1D; Supplementary Fig. S1). Quantitative analysis confirmed these visually observed differences between the migration trajectory of the control (C1) and both patient-derived lines (Fig. 1F). The value of MSD exponent  $\alpha$  was 1.54 (with a 95% confidence interval (CI) of 1.52 to 1.57) for control line (C1), which indicates while these cells did show randomness, they also exhibited a degree of directed motion. In contrast, the MSD exponent  $\alpha$  values were 1.22 (95% CI: 1.21 to 1.24) and 1.27 (95% CI: 1.26 to 1.28) for the B1 and B2 lines respectively, suggesting a trajectory that was closer to a Brownian pattern of movement (Fig. 1F). There were no differences in overall displacement (Fig. 1E), although B1 additionally showed an increased speed of migration (Fig. 1G).

### 2.3 Transcriptome analysis revealed differential expression of RNA transcripts related to cell migration

Our analysis for the migration-related genes (N=290) in the transcriptome data revealed that there were 61 transcripts in B1 and 58 in B2 that were differentially expressed, in comparison with C1. Of these, 29 transcripts were dysregulated across both patient-derived lines (Fig. 2B, C). The expression level of *LAMA1* and *NRG2* was confirmed using real-time q-PCR and was found to be downregulated (Supplementary. Fig. S3). Functional interaction of the above 29 using STRING highlighted a densely interconnected network of proteins, centered on ERBB proteins (Fig. 2D, Supplementary. Fig. S2).

### 3. Discussion

The BD patients in this study were chosen from a dense family, who had multiple rare damaging variants implicated in cellular migration, and had structural abnormalities noted on brain MRI (Fig. 1A). Cellular migration analysis showed that while patient-derived NPCs showed a random trajectory, the NPCs from a healthy control migrated towards other cells (directed/ ballistic movement), (Fig. 1C, D, F). Transcriptome analysis (Fig. 2A) showed that numerous migration-related genes were dysregulated in patient-derived NPCs (Fig. 2B, C).

The results of the STRING analysis (Fig. 2D, Supplementary Fig. S2) implicated a network centered at ERBB proteins. This network includes several proteins including tyrosine protein kinases that function as cell surface receptors for neuregulins, EGF and other ligands. They are involved in organogenesis, including the brain, where they regulate many functions including cell proliferation, differentiation, migration and apoptosis. Proteins that are part of the EGF/ERBB network (Supplementary Fig. S2) fulfil different roles in migration of neural precursors. EGFR, PLCG2 and PRKCA, for instance, regulate migration via calcium signaling [Büttner et al., 2018]. Inhibition of ERBB receptors can lead to suppression of cancer cell migration [Momeny et al., 2017]; and inhibition of NRG1/ERBB2 signaling reduces migration of human glioma cells [Ritch et al., 2003].

The trajectory of migrating neural precursors lays down the foundations of developing central nervous system [Rahimi-Balaei et al., (2018); Barber et al., (2015)]. The speed and direction of migrating cells can alter the regional cellular make-up, and therefore wiring of cortical areas. These observations at the level of individual cells may alter collective behavior (tissue organization); and is thus a question of fundamental importance in the context of brain disease, and behavior. Stochasticity is inherent in all biological systems, and its characterization may help us decipher localscale interactions among individuals, be it organisms or cells [Jhavar et al., 2020; Jhavar and Guttal 2020; Bruckner et al., 2019]. An understanding of how single cells move, their inherent stochasticity and interaction can be crucial for understanding phenomena across scales, from tissue organization to wound healing and repair, and organization within the brain [Davidson et al., 2021; Otsuki and Brand, 2020; Zinner et al., 2020; Silva et al., 2019].



Overall, our previous work [Paul et al., 2020] and current analysis indicate that there are identifiable cellular abnormalities in NPCs derived from BD patients. These cells proliferate faster, and exhibit aberrant migration patterns. Whether these could, in part, be responsible for the deviations in gray and white matter noted on MRI imaging is a matter of conjecture at this point. Also, generalization of study findings is possible only by replication in larger sets of NPCs derived from several such families. The present work could extend to an investigation in 3D organoids (mini-brains), to examine organizational aspects and functionality in more detail, currently in progress in our lab. The integration of deep clinical phenotyping with iPSC models in such sample sets will be crucial to understand the pathobiology of BD, and the mechanisms of recovery and resilience.

## **4. Materials and Methods**

The NPCs from two BD-patients from a multiplex family, and one healthy control line were used for experiments (pedigree and clinical details in Paul et al., 2020). Details of clinical assessments [Viswanath et al., 2018], magnetic resonance imaging (MRI) [Bhalerao et al., 2021; Holla et al., 2018; Parekh and Naik, 2021], generation of NPCs and their cellular characterization have been described earlier [Mukherjee et al., 2019; Paul et al., 2020]. The study was approved by the ethics committee of the National Institute of Mental Health and Neurosciences, Bengaluru, India, and conforms to the ethical norms and standards in the Declaration of Helsinki.

### **4.1 MRI analysis**

Global brain volumes (gray and white matter) were calculated using the FreeSurfer software suite (v6.0). Individualized centiles for each tissue class were calculated using out of sample log likelihood estimation against the bootstrapped model parameters obtained from the expected age-related trends from a large aggregated database of reference brain volumes [Bethlehem R.A.I, 2021]. This database included normative brain volumes of Indian subjects for ages 6-60 years [Bethlehem R.A.I, 2021; Holla et al., 2020].

### **4.2 Assessment of migratory capacity of neural precursor cells**

Cells were seeded in ibidi Culture-Insert 2-well in  $\mu$ -dish (Cat. no. 81176, ibidi GmbH, Germany), at a density of 15000 - 20000 cells. Passage numbers for NPCs ranged between P10-P19. Movement of cells across the 500- $\mu$ m gap in the ibidi dish was recorded in time-lapse images — every 15 min, for 15 hours with an Olympus microscope equipped with a camera (Hamamatsu) using a 10X dry objective. The experiments for each cell line were done in three biological replicates. Migration of NPCs were tracked for 12 hours, in a 37°C humidified chamber with 5% CO<sub>2</sub> and quantified using ImageJ (Version IJ1.46r) with the plugin 'Manual Tracking'.

### **4.3 Quantitative movement analysis of cellular migration**

The paths of migrating NPCs were tracked with the help of X and Y coordinates from the images taken. From the trajectories of each cell, we estimated the (i) average speed (over 15 minutes intervals) and (ii) displacement between the initial and final locations (after 15

hours). The box-plot (Fig. 1E) shows displacement of 100 cells (cumulative from three experiments) for each cell line.

From (ii), we also computed mean-squared displacement (MSD) as a function of time separation between any two points along a cell's trajectory. The MSD exponent  $\alpha$ , which determines the functional relationship between MSD and the time lag ( $\tau$ ), given by  $MSD(\tau) \sim \tau^\alpha$ , was also calculated. When  $\alpha = 1$ , the cells are said to exhibit Brownian motion (or diffusive motion), whereas deviation from this value — termed anomalous diffusion values of  $\alpha > 1$  represent super-diffusive motion (or if  $\alpha < 1$ , sub-diffusive motion). A value of  $\alpha = 2$ , implies that cells are migrating via a highly persistent or ballistic motion [Dieterich et al., 2008; Gal et al., 2013].

#### 4.4 Transcriptome analysis

RNA-Seq of the NPCs was performed on the Illumina® Hi-Seq platform. Genes which showed >1-fold difference with FDR adjusted P-value < 0.05 were considered differentially expressed, as detailed elsewhere [Paul et al., 2020]. Since we observed migration deficits in patient-derived lines, we performed a targeted analysis focusing on genes already implicated in cellular migration. The gene list was extracted from the ConsensusPathDB analysis (Release 34) [Kamburov et al., 2011, 2009] (keywords “migration” and “motility”). In addition, the data from published references on genes related to migration were included [Snel et al., 2000; Suyama et al., 2003; Simpson et al., 2008; Wu et al., 2008; Bavamian et al., 2015; Madison et al., 2015; Buchsbaum and Cappello, 2019; Szklarczyk et al., 2019] to create a collated list of migration related genes (N=290).

## **Acknowledgements**

The authors would like to thank Dr. Jitesh Jhavar, postdoctoral researcher, Department of Collective Behavior, Max Planck Institute of Animal Behavior, University of Konstanz, for his valuable suggestions on ImageJ analysis; Dr. Ravi Muddashetty and Dr. Dasaradhi Palakodeti for providing computational facilities for transcriptome analysis; Ms.Chitra B. and Mr. Mallappa M. for technical support. We are grateful to the participants and their families for their cooperation, as well as to clinicians and staff at NIMHANS for their assistance.

## **Author Contributions:**

S.K.S - NPC experiments, wrote the first draft, prepared figures, read and approved the final manuscript. S.K.S and P.P - Performed q-PCR. V.G. - Performed NPC quantitative movement data analysis. B.H. - MRI data analysis. A.V. and K.M. - Transcriptome data analysis. H.B. - Helped with the migration experiments. P.B. - Standardised the primers. R.K.N. - Performed clinical assessments. A.M.V and V.K. - Helped with the migration experiments. M.P. - Supervision of cellular experiments, read and approved the final manuscript. S.J. - Supervision of experiments, read and approved the final manuscript. R.S. - Supervision of cellular experiments, editing drafts, read and approved the final manuscript. B.V. - supervised clinical assessments and cellular experiments, read and approved the final manuscript. The overall study design was developed as part of the ADBS. All authors contributed to and have approved the final manuscript.

## **Role of funding source:**

This work was supported by a grant from the Department of Biotechnology (DBT) (India) funded grants- “Accelerating program for discovery in brain disorders using stem cells” (BT/PR17316/MED/31/326/2015) (ADBS); the Department of Science and Technology, “Targeted generation and interrogation of cellular models and networks in neuro-psychiatric disorders using candidate genes” (BT/01/CEIB/11/VI/11/2012); “Imaging-genomics approach to identify molecular markers of Lithium response in Bipolar disorder” through the Department of Science and Technology (India) - INSPIRE Faculty Fellowship awarded to Dr. Biju Viswanath (Project number 00671, Code: IFA-12-LSBM-44); Science & Engineering Research Board (India) project “Dissecting the biology of lithium response in human induced pluripotent stem cell derived neurons from patients with bipolar affective disorder” (ECR/2016/002076); and “Deciphering the mechanisms of lithium response in patients with bipolar disorder” through

the DBT/ Wellcome Intermediate Clinical Fellowship awarded to Dr. Biju Viswanath (IA/CPHI/20/1/505266) - This funding has also been used for our experiments along with the other grants. The results of this work have been partially presented as a poster in the conference- at XXVIIIth World Congress of Psychiatry Genetics, 2020, and also received the Hugh Gurling award 2020.

**Conflict of Interest:**

The authors declare that they have no conflict of interest

## References

- Abé, C., Liberg, B., Song, J., Bergen, S. E., Petrovic, P., Ekman, C. J., Sellgren, C. M., Ingvar, M. and Landén, M.** (2020). Longitudinal Cortical Thickness Changes in Bipolar Disorder and the Relationship to Genetic Risk, Mania, and Lithium Use. *Biol. Psychiatry* **87**, 271–281.
- Barber, M., Arai, Y., Morishita, Y., Vigier, L., Causeret, F., Borello, U., Ledonne, F., Coppola, E., Contremoulins, V., Pfrieder, F. W., et al.** (2015). Migration speed of Cajal-Retzius cells modulated by vesicular trafficking controls the size of higher-order cortical areas. *Curr. Biol.* **25**, 2466–2478.
- Bavamian, S., Mellios, N., Lalonde, J., Fass, D. M., Wang, J., Sheridan, S. D., Madison, J. M., Zhou, F., Rueckert, E. H., Barker, D., et al.** (2015). Dysregulation of miR-34a links neuronal development to genetic risk factors for bipolar disorder. *Mol. Psychiatry* **20**, 573–584.
- Bethlehem R.A.I** (2021). Brain charts for the human lifespan. *bioRxiv* doi: <https://doi.org/10.1101/2021.06.08.447489>
- Bhalerao, G. V., Parekh, P., Saini, J., Venkatasubramanian, G., John, J. P., Viswanath, B., Rao, N. P., Narayanaswamy, J. C., Sivakumar, P. T., Kandasamy, A., et al.** (2021). Systematic evaluation of the impact of defacing on quality and volumetric assessments on T1-weighted MR-images. *J. Neuroradiol.* **9861**(21).
- Brückner, D. B., Fink, A., Schreiber, C., Röttgermann, P. J. F., Rädler, J. O. and Broedersz, C. P.** (2019). Stochastic nonlinear dynamics of confined cell migration in two-state systems. *Nat. Phys.* **15**, 595–601.
- Buchsbaum, I. Y. and Cappello, S.** (2019). Neuronal migration in the CNS during development and disease: Insights from in vivo and in vitro models. *Dev.* **146**(1).
- Büttner, P., Ueberham, L., Shoemaker, M. B., Roden, D. M., Dinov, B., Hindricks, G., Bollmann, A. and Husser, D.** (2018). Identification of central regulators of calcium signaling and ECM-receptor interaction genetically associated with the progression and recurrence of atrial fibrillation. *Front. Genet.* **9**, 1–6.
- Chen, H. M., DeLong, C. J., Bame, M., Rajapakse, I., Herron, T. J., McInnis, M. G. and O’Shea, K. S.** (2014). Transcripts involved in calcium signaling and telencephalic neuronal fate are altered in induced pluripotent stem cells from bipolar disorder patients. *Transl. Psychiatry* **4**(3).
- Ching, C. R. K., Hibar, D. P., Gurholt, T. P., Nunes, A., Thomopoulos, S. I., Abé, C., Agartz, I., Brouwer, R. M., Cannon, D. M., de Zwarte, S. M. C., et al.** (2020). What we learn about bipolar disorder from large-scale neuroimaging:

Findings and future directions from the ENIGMA Bipolar Disorder Working Group. *Hum. Brain Mapp.* 1–27.

**Dai, Y., O'Brien, T. D., Pei, G., Zhao, Z. and Jia, P.** (2020). Characterization of genome-wide association study data reveals spatiotemporal heterogeneity of mental disorders. *BMC Med. Genomics* **13**, 192–205.

**Davidson, J. D., Vishwakarma, M. and Smith, M. L.** (2021). Hierarchical Approach for Comparing Collective Behavior Across Scales: Cellular Systems to Honey Bee Colonies. *Front. Ecol. Evol.* **9**, 1–11.

**Dieterich, P., Klages, R., Preuss, R. & Schwab, A.** (2008). Anomalous dynamics of cell migration. *Proceedings of the National Academy of Sciences.* **105**, 459–463.

**Gal, N., Lechtman-Goldstein, D. & Weihs, D.** (2013). Particle tracking in living cells: a review of the mean square displacement method and beyond. *Rheologica Acta.* **52**, 425–443.

**Gandal, M. J., Zhang, P., Hadjimichael, E., Walker, R. L., Liu, S., Won, H., Bakel, H. Van, Varghese, M., Wang, Y., Shieh, A. W., et al.** (2018). Transcriptome-wide isoform-level dysregulation in ASD, schizophrenia, and bipolar disorder. **362**, 1–32.

**Ganesh, S., Ahmed P., H., Nadella, R. K., More, R. P., Seshadri, M., Viswanath, B., Rao, M., Jain, S. and Mukherjee, O.** (2019). Exome sequencing in families with severe mental illness identifies novel and rare variants in genes implicated in Mendelian neuropsychiatric syndromes. *Psychiatry Clin. Neurosci.* **73**(1), 11–19.

**Harrison, P. J., Colbourne, L. and Harrison, C. H.** (2020). The neuropathology of bipolar disorder: systematic review and meta-analysis. *Mol. Psychiatry* **25**, 1787–1808.

**Hibar, D. P., Westlye, L. T., Doan, N. T., Jahanshad, N., Cheung, J. W., Ching, C. R. K., Versace, A., Bilderbeck, A. C., Uhlmann, A., Mwangi, B., et al.** (2018). Cortical abnormalities in bipolar disorder: An MRI analysis of 6503 individuals from the ENIGMA Bipolar Disorder Working Group. *Mol. Psychiatry* **23**, 932–942.

**Holla, B., Karthik, S., Biswal, J. and Viswanath, B.** (2018). Brain Functional Magnetic Resonance Imaging Cue-reactivity Can Predict Baclofen Response in Alcohol Use Disorders Cognition View project Yoga and Schizophrenia-a Comprehensive Assessment of Neuroplasticity View project. *Artic. Clin. Psychopharmacol. Neurosci.* **16**, 290–300.

**Holla, B., Taylor, P. A., Glen, D. R., Lee, J. A., Vaidya, N., Mehta, U. M., Venkatasubramanian, G., Pal, P. K., Saini, J., Rao, N. P., et al.** (2020). A series

of five population-specific Indian brain templates and atlases spanning ages 6–60 years. *Hum. Brain Mapp.* **41**, 5164–5175.

**Ithal, D., Sukumaran, S.K., Bhattacharjee, D., Vemula, A., Nadella, R., Mahadevan, J., Sud, R., Viswanath, B., Purushottam, M., Jain, S.** (2021). Exome hits demystified: The next frontier. *Asian J Psychiatr.* **59**, 102640.

**Jhawar, J. and Guttal, V.** (2020). Noise-induced effects in collective dynamics and inferring local interactions from data: Inferring Noise-induced States. *Philos. Trans. R. Soc. B Biol. Sci.* **375**, 11–13.

**Jhawar, J., Morris, R. G., Amith-Kumar, U. R., Raj, M. D., Rogers, T., Rajendran, H., Guttal, V.** (2020). Noise-induced schooling of fish. *Nature Physics.* **16**(4), 488–493.

**Johnstone, M., Vasistha, N. A., Barbu, M. C., Dando, O., Burr, K., Christopher, E., Glen, S., Robert, C., Fetit, R., Macleod, K. G., et al.** (2019). Reversal of proliferation deficits caused by chromosome 16p13.11 microduplication through targeting NFκB signaling: an integrated study of patient-derived neuronal precursor cells, cerebral organoids and in vivo brain imaging. *Mol. Psychiatry* **24**, 294–311.

**Kamburov, A., Wierling, C., Lehrach, H. and Herwig, R.** (2009). ConsensusPathDB - A database for integrating human functional interaction networks. *Nucleic Acids Res.* **37**, 623–628.

**Kamburov, A., Pentchev, K., Galicka, H., Wierling, C., Lehrach, H. and Herwig, R.** (2011). ConsensusPathDB: Toward a more complete picture of cell biology. *Nucleic Acids Res.* **39**, 712–717.

**Madison, J. M., Zhou, F., Nigam, A., Hussain, A., Barker, D. D., Nehme, R., Van Der Ven, K., Hsu, J., Wolf, P., Fleishman, M., et al.** (2015). Characterization of bipolar disorder patient-specific induced pluripotent stem cells from a family reveals neurodevelopmental and mRNA expression abnormalities. *Mol. Psychiatry* **20**, 703–717.

**Magioncalda, P. and Martino, M.** (2021). A unified model of the pathophysiology of bipolar disorder. *Mol. Psychiatry.*

**Mertens, J., Wang, Q.-W., Kim, Y., Yu, D. X., Pham, S., Yang, B., Zheng, Y., Diffenderfer, K. E., Zhang, J., Soltani, S., et al.** (2015). Differential responses to lithium in hyperexcitable neurons from patients with bipolar disorder. *Nature* **527**, 95–99.

**Momeny, M., Zarrinrad, G., Moghaddaskho, F., Poursheikhani, A., Sankanian, G., Zaghali, A., Mirshahvaladi, S., Esmaceli, F., Eyvani, H., Barghi, F., et al.** (2017). Dacomitinib, a pan-inhibitor of ErbB receptors, suppresses growth and



invasive capacity of chemoresistant ovarian carcinoma cells. *Sci. Rep.* **7**, 1–12.

**Mühleisen, T. W., Reinbold, C. S., Forstner, A. J., Abramova, L. I., Alda, M., Babadjanova, G., Bauer, M., Brennan, P., Chuchalin, A., Cruceanu, C., et al.** (2018). Gene set enrichment analysis and expression pattern exploration implicate an involvement of neurodevelopmental processes in bipolar disorder. *J Affect Disord.* **228**, 20-25.

**Mukherjee, O., Acharya, S. and Rao, M.** (2019). Making NSC and neurons from patient-derived tissue samples. *Methods Mol. Biol.* **1919**, 9–24.

**Osete, J. R., Akkouch, I. A., de Assis, D. R., Szabo, A., Frei, E., Hughes, T., Smeland, O. B., Steen, N. E., Andreassen, O. A. and Djurovic, S.** (2021). Lithium increases mitochondrial respiration in iPSC-derived neural precursor cells from lithium responders. *Mol. Psychiatry.* **26**(11):6789-6805.

**Otsuki, L., Brand, A. H.** (2020). Quiescent neural stem cells for brain repair and regeneration: lessons from model systems. *Trends Neurosci.* **43**(4), 213-226.

**Parekh, H. P. and Naik, S. A. P.** (2021). Role of Magnetic Resonance Imaging in Study of the Patellofemoral Joint Morphological Abnormalities Predisposing to Patellar Instability. *Int. J. Sci. Healthc. Res.* **6**, 208–215.

**Paul, P., Iyer, S., Nadella, R. K., Nayak, R., Chellappa, A. S., Ambardar, S., Sud, R., Sukumaran, S. K., Purushottam, M., Jain, S., et al.** (2020). Lithium response in bipolar disorder correlates with improved cell viability of patient derived cell lines. *Sci. Rep.* **10**, 1–10.

**Rahimi-Balaei, M., Bergen, H., Kong, J. and Marzban, H.** (2018). Neuronal migration during development of the cerebellum. *Front. Cell. Neurosci.* **12**, 1–16.

**Ritch, P. A., Carroll, S. L. and Sontheimer, H.** (2003). Neuregulin-1 enhances motility and migration of human astrocytic glioma cells. *J. Biol. Chem.* **278**, 20971–20978.

**Simpson, K. J., Selfors, L. M., Bui, J., Reynolds, A., Leake, D., Khvorova, A. and Brugge, J. S.** (2008). Identification of genes that regulate epithelial cell migration using an siRNA screening approach. *Nat. Cell Biol.* **10**, 1027–1038.

**Silva, C. G., Peyre, E., Nguyen, L.** (2019). Cell migration promotes dynamic cellular interactions to control cerebral cortex morphogenesis. *Nature Reviews Neuroscience*, **20**(6), 318-329.

**Snel, B., Lehmann, G., Bork, P. and Huynen, M. A.** (2000). String: A web-server to retrieve and display the repeatedly occurring neighbourhood of a gene. *Nucleic Acids Res.* **28**, 3442–3444.

- Suyama, E., Kawasaki, H., Kasaoka, T. and Taira, K.** (2003). Identification of genes responsible for cell migration by a library of randomized ribozymes. *Cancer Res.* **63**, 119–124.
- Szklarczyk, D., Gable, A. L., Lyon, D., Junge, A., Wyder, S., Huerta-Cepas, J., Simonovic, M., Doncheva, N. T., Morris, J. H., Bork, P., et al.** (2019). STRING v11: Protein-protein association networks with increased coverage, supporting functional discovery in genome-wide experimental datasets. *Nucleic Acids Res.* **47**, D607–D613.
- Tabarés-Seisdedos, R., Escámez, T., Martínez-Giménez, J.A., Balanzá, V., Salazar, J., Selva, G., Rubio, C., Vieta, E., Geijó-Barrientos, E., Martínez-Arán, A., et al.** (2006). Variations in genes regulating neuronal migration predict reduced prefrontal cognition in schizophrenia and bipolar subjects from mediterranean Spain: a preliminary study. *Neuroscience.* **139**(4):1289-300.
- Uribe, E. and Wix, R.** (2012). Neuronal migration, apoptosis and bipolar disorder. *Rev Psiquiatr Salud Ment.* **5**(2):127-33.
- Van Rheenen, T. E., Lewandowski, K. E., Bauer, I. E., Kapczinski, F., Miskowiak, K., Burdick, K. E. and Balanzá-Martínez, V.** (2020). Current understandings of the trajectory and emerging correlates of cognitive impairment in bipolar disorder: An overview of evidence. *Bipolar Disord.* **22**, 13–27.
- Vasistha, N.A., Johnstone, M., Barton, S.K., Mayerl, S.E., Thangaraj Selvaraj, B., Thomson, P.A., Dando, O., Grünewald, E., Alloza, C., Bastin, M.E., et al.** (2019). Familial t(1;11) translocation is associated with disruption of white matter structural integrity and oligodendrocyte-myelin dysfunction. *Mol Psychiatry.* **24**(11), 1641-1654.
- Viswanath, B., Rao, N. P., Narayanaswamy, J. C., Sivakumar, P. T., Kandasamy, A., Kesavan, M., Mehta, U. M., Venkatasubramanian, G., John, J. P., Mukherjee, O., et al.** (2018). Discovery biology of neuropsychiatric syndromes (DBNS): A center for integrating clinical medicine and basic science. *BMC Psychiatry.* **18**, 108.
- Wu, X., Kodama, A. and Fuchs, E.** (2008). ACF7 Regulates Cytoskeletal-Focal Adhesion Dynamics and Migration and Has ATPase Activity. *Cell* **135**, 137–148.
- Zinner, M., Lukonin, I., Liberali, P.** (2020). Design principles of tissue organisation: How single cells coordinate across scales. *Curr Opin Cell Biol.* **67**, 37-45.



## Figure legends:

### Figure 1: Abnormal migration phenotype in patient-derived neural precursors

- A. Freesurfer based segmentation of T1w image into gray matter (dark gray), white matter (light gray) and ventricles (light blue). The top row shows axial slices for B1 and bottom row shows axial slices for B2. A, Anterior; P, Posterior; R, Right; and L, Left. cGMV, Total cortical gray matter volume; WMV, Total cerebral white matter volume; sGMV, Subcortical gray matter volume.
- B. Migration of neural precursor cells from C1, B1 and B2 at different time points. Only C1 closed the gap after 12 hours of migration.
- C. Direction of migration: C1 migrated in a directional pattern; B1 and B2 cells, on the other hand, migrated in random, non-directed manner. Both BD lines showed back and forth movement, directional and circular patterns of migration.
- D. Sample migratory paths of C1, B1 and B2 lines over 15 hours.
- E. Box plots of displacement of the migrating cells after 15 hours (n = 100 cells per line).
- F. Mean squared displacement (MSD) as a function of time (in minutes), averaged over 100 cells per line.
- G. Comparing the speed of migration for C1, B1 and B2 cells (Mean  $\pm$  SD, over 15 hours): B1 cells migrated at a speed  $1.21 \pm 0.15 \mu\text{m}/\text{min}^{***}$ , B2 cells at  $0.50 \pm 0.17 \mu\text{m}/\text{min}^{***}$ ; whereas C1 cells moved at  $0.55 \pm 0.17 \mu\text{m}/\text{min}$ . Mean speed of C1 and B2 cell lines are statistically different from those of B1(P value:  $^{***} < 0.001$ ).

### Figure 2: RNA-seq analysis shows dysregulated EGF/ERBB signaling pathway in patient-derived NPCs

- A. Transcriptome analysis pipeline
- B. Transcripts common and unique to B1 and B2 patient-derived lines
- C. Comparison of fold change for common transcripts among the two patient-derived neural precursor lines.

D. Protein interaction network, centered on ERBB4, that is downregulated in patient-derived NPCs. The interactions were plotted using STRING online database (<https://string-db.org/>).

The entire interaction network is shown in Supplementary Figure S2.

### Supplementary Methods:

Total RNA was extracted using the Qiagen RNeasy Mini Kit (Cat. No: 74104). cDNA synthesis was performed with 1.5ug of RNA using High-Capacity cDNA Reverse Transcription Kit (Thermofisher Cat. No: 4368814). Sample cDNA and ‘no template control’ (NTC) were run in triplicates with the QuantStudio<sup>®</sup>6 Flex Real-time qPCR system (Thermofisher). The qPCR reaction was carried out with SYBR Green Master Mix (Takyon<sup>™</sup> Low ROX) and 0.5 µM of each primer. Relative gene expression was estimated as previously described (Paul et al. 2020), and normalized to housekeeping gene *UBC*.

The primer sequences are:

*LAMA1* Forward : 5’ GAGCATGGAGAGATTCATACATC 3’

*LAMA1* Reverse : 5’ GGTCATGAGATCTGCATTGA 3’

*NRG2* Forward : 5’ GCAACGGCAGAAAGAACTCA 3’

*NRG2* Reverse : 5’ CTTCCCCAGGATGTTCTCGG 3’

*UBC* Forward : 5’ CTGGAAGATGGTCGTACCCTG 3’

*UBC* Reverse : 5’ GGTCTTGCCAGTGAGTGTCT 3’



## Supplementary Figures:

**S1.** Representative recordings of cellular migration in B1, B2 and C1 lines. Migration tracks of individual cells were recorded by marking the position of the nucleus in individual frames. Colored lines indicate positions of individual cells during the duration of migration assay. While the migration pattern in C1 is largely linear (S1-A), showing individual cells from either side of 500µm gap; in B1 and B2 lines (S1-B and S1-C), we encountered mixed patterns of cellular migration: apart from linear trajectory, these NPCs also demonstrated back-and-forth as well as circular motions. Images for migration of control and B1 cells were captured with 4x objective and B2 cell migration captured with 10x objective.

**S2.** Functional interactions among proteins shortlisted from Fig. 2C, explored using STRING online database. Only those proteins were included where direction of change of expression was similar in the two patient-derived lines.

**S3.** Real-time qPCR analysis of *LAMA1* and *NRG2* gene expression in B1 and B2 lines. Data are represented as Mean  $\pm$  SD from three samples per individual group of two independent experiments.

## Supplementary Table 1:

Rare damaging exome variants identified in patients.



Figure 1

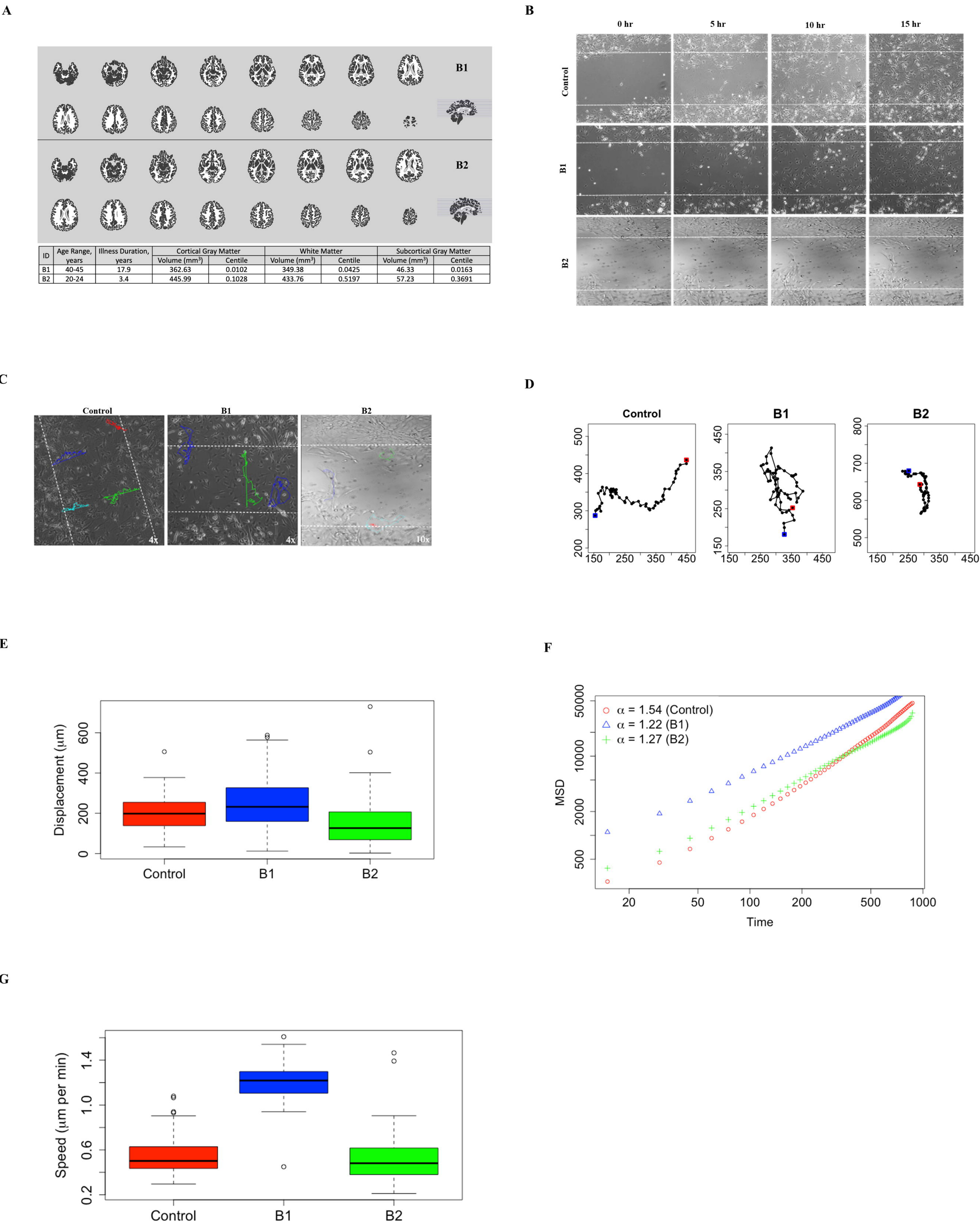
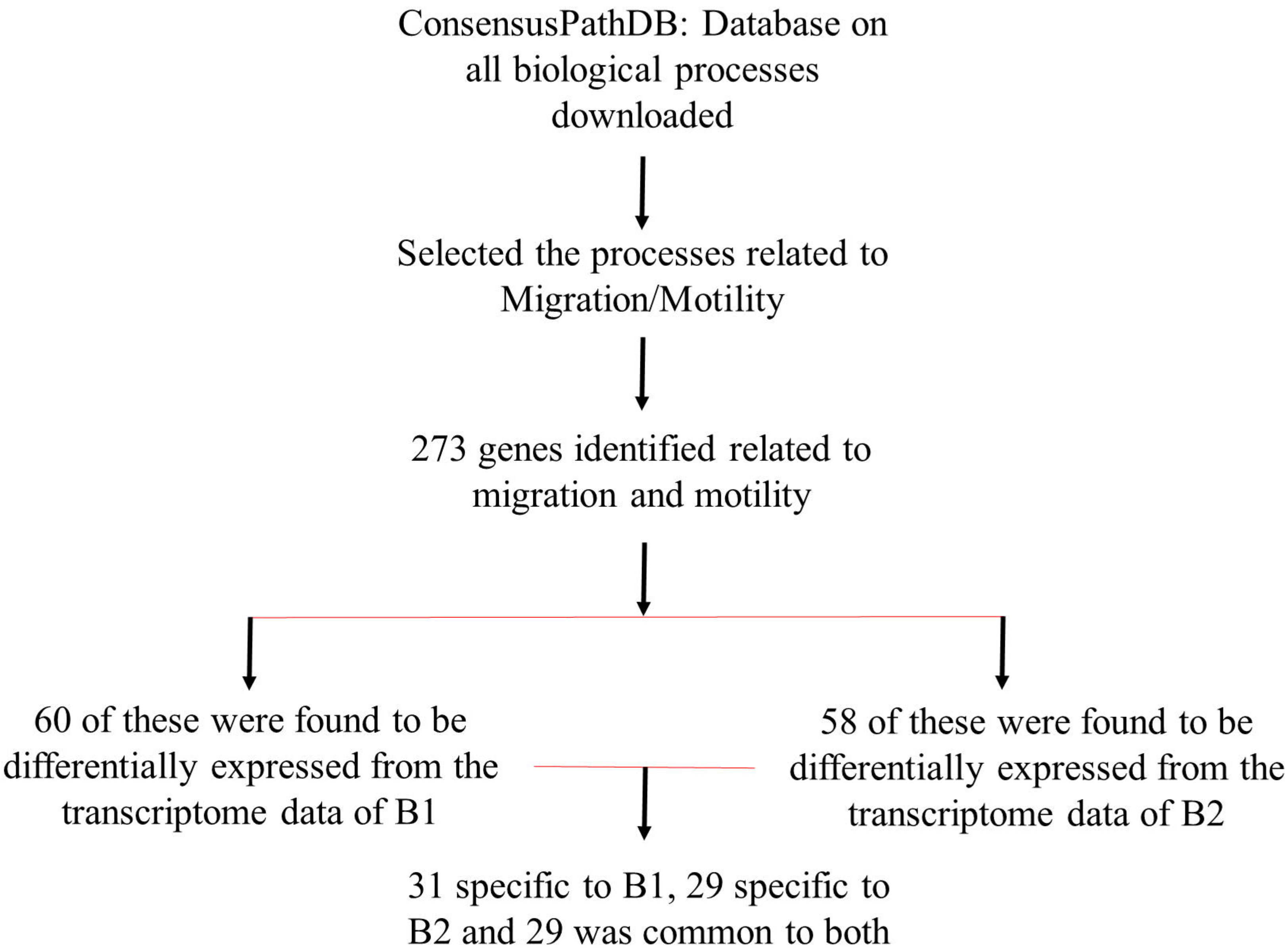




Figure 2

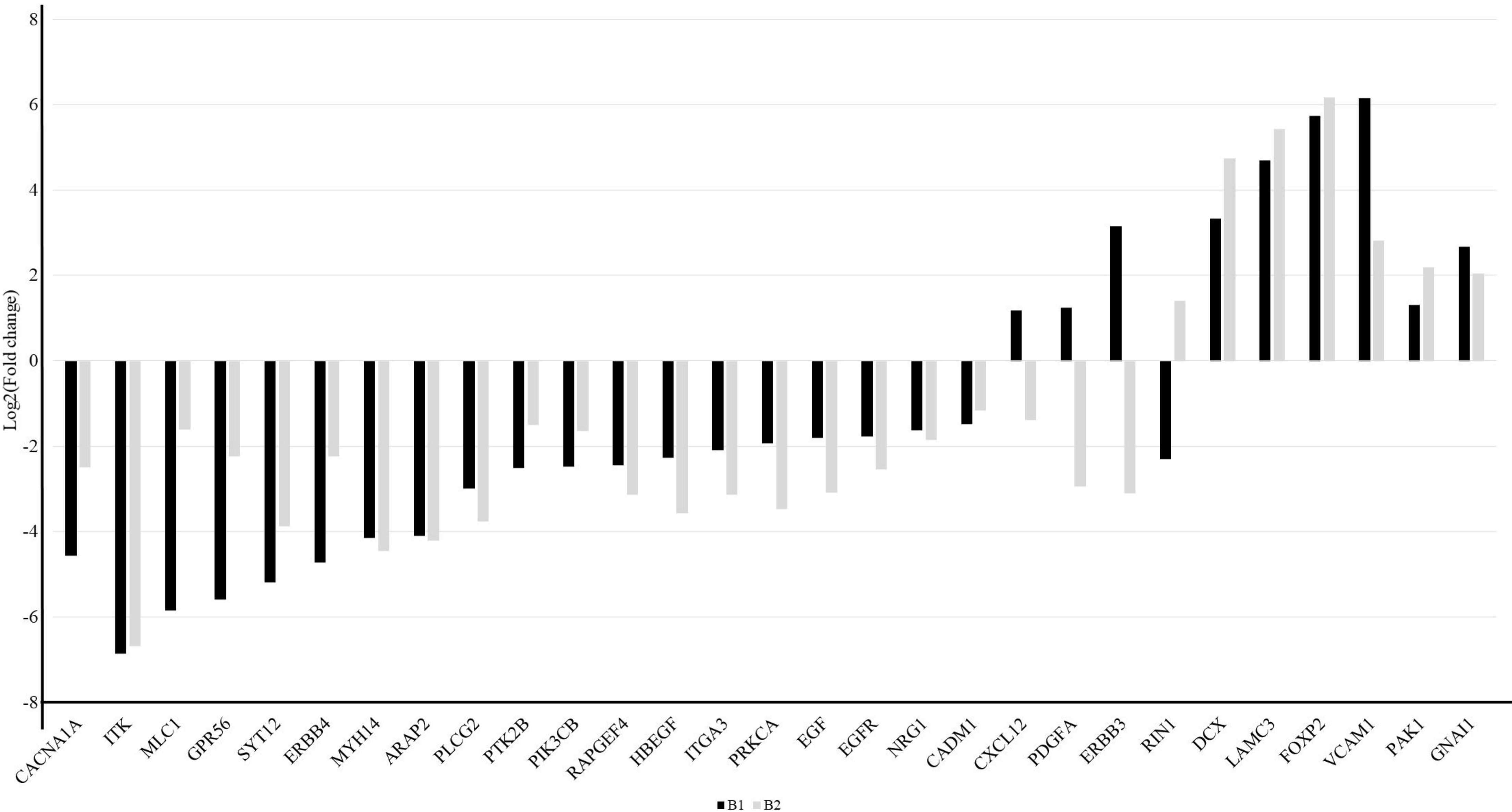
A



B

Common genes in B1 and B2	Genes specific to B1	Genes specific to B2
CACNA1A	RND1	SHC1
HBEGF	ZMIZ1	MMP2
ITGA3	ADPRHL1	IQGAP1
MLC1	LAMB1	LAMA5
ERBB4	MAP1B	VCL
PDGFA	CYBA	COL4A1
DCX	DOCK5	VAV3
SYT12	PRKAR2B	CXCR4
RAPGEF4	HGF	CACNA1D
ITK	VASP	MYH10
VCAM1	LAMA1	CTNNA2
PRKCA	CHN1	PTPRT
PAK1	DAB1	DNAH5
PIK3CB	SEMA3G	LARGE
CXCL12	FAT4	MYH9
FOXP2	LIMK1	TRIO
GPR56	LIMK2	RHOC
GNAI1	PLXNB1	PXN
ARAP2	MET	CAPNS1
EGFR	ACTA1	LAMB2
EGF	MYLK	MAP2K1
MYH14	MGAT4A	ANK3
PTK2B	MYL12A	NRG3
NRG1	RUNX2	SEMA4D
PLCG2	PIK3R2	CLIP1
CADM1	NRG2	TNS3
LAMC3	GAB1	CAPN2
ERBB3	SH3PXD2A	MSN
RIN1	ARX	PIP5K1B
	MAPK11	
	ITGA4	

C



D

