

Is coagulation-protein consumption upon admission linked to COVID-19 severity and mortality?

Running title: Coagulation proteins and COVID-19

Authors:

Francisco C. CEBALLOS ¹; Pablo RYAN ²; Rafael Blancas GÓMEZ-CASERO ³; María MARTIN-VICENTE ¹; Erick Joan VIDAL-ALCÁNTARA ¹; Felipe PERÉZ-GARCÍA ⁴, Sofía BARTOLOME ¹; Juan CHURRUCA-SARASQUETA ⁵, Ana VIRSEDA-BERDICES ¹, Oscar MARTÍNEZ-GONZÁLEZ ³, Oscar BROCHADO-KITH ¹; Marta RAVA ⁶; Carolina VILCHES-MEDKOURI ⁷, Natalia BLANCA-LÓPEZ ⁸; Ignacio RAMIREZ MARTINEZ-ACITORES ³, Patricia MOREIRA-ESCRICHE ⁹, Carmen DE JUAN ⁹, Salvador RESINO ¹ (*), Amanda FERNÁNDEZ-RODRÍGUEZ ¹ (¥, *), María Ángeles JIMÉNEZ-SOUSA ¹ (¥).

Correspondence: amandafr@isciii.es (A.F.R) and sresino@isciii.es (S.R.).

(¥), Both authors contributed equally to this study.

Current affiliations:

(1) Unit of Viral Infection and Immunity, National Center for Microbiology (CNM), Health Institute Carlos III (ISCIII), Majadahonda, Madrid, Spain.

(2) Department of Infectious Diseases, Hospital Universitario Infanta Leonor, Madrid, Spain

(3) Critical Care Department, Hospital Universitario del Tajo, Aranjuez, Spain.

(4) Clinical Microbiology Department, Hospital Universitario Príncipe de Asturias, Alcalá de Henares, Spain.

(5) Haematology and Haemostasis Department, University Hospital Infanta Leonor, Madrid, Spain

(6) Unit AIDS Research Network Cohort (CoRIS). National Center of Epidemiology (CNE). Health Institute Carlos III (ISCIII). Majadahonda, Madrid, Spain.

(7) Clinical Analysis Service, Hospital Universitario Príncipe de Asturias, Alcalá de Henares, Spain.

(8) Allergology Department, University Hospital Infanta Leonor, Madrid, Spain.

(9) Department of Infectious Diseases, Hospital Universitario Severo Ochoa, Madrid, Spain.

1 **ABSTRACT**

2 The link between coagulation system disorders and COVID-19 has not yet been fully
3 elucidated. With the aim of evaluating the association of several coagulation proteins
4 with COVID-19 severity and mortality, we performed a cross-sectional study in 134
5 patients classified according to the highest disease severity reached during the disease.
6 We found higher levels of antithrombin, prothrombin, factor XI, factor XII and factor XIII
7 in asymptomatic/mild and moderate COVID-19 patients than healthy individuals.
8 Interestingly, decreased levels of antithrombin, factor XI, XII and XIII were observed in
9 those patients who eventually developed severe illness. Additionally, survival models
10 showed us that patients with lower levels of these coagulation proteins had an increased
11 risk of death. In conclusion, COVID-19 provokes early increments of some specific
12 coagulation proteins in most patients. However, lower levels of these proteins at
13 diagnosis might “paradoxically” imply a higher risk of progression to severe disease and
14 COVID-19-related mortality.

15

16 **Keywords**

17 SARS-CoV2; COVID-19; coagulation; severity; mortality.

18

19

20 INTRODUCTION

21 Coronavirus disease 2019 (COVID-19) is associated with a significant activation of the
22 coagulation cascade. While thrombosis has been classically described in acute and
23 chronic infections including respiratory diseases (1) , thrombotic risk appears to be
24 higher in COVID-19 (2). Consequently, thromboembolic complications are common in
25 hospitalized patients, especially among those in intensive care units (ICU) (3). In this
26 setting, several mechanisms of coagulation activation have been postulated (4) and
27 large dynamic fluctuations in coagulation and fibrinolysis laboratory parameters have
28 been described during disease course (5). Development of overt disseminated
29 intravascular coagulation (DIC) seems to be rare and to follow a different pattern from
30 other infection-derived DIC (5-7) , but it has been reported in up to 71% of fatal cases as
31 a late and ominous sign (8).

32 Additionally, both venous and arterial thrombotic events have been independently
33 associated with mortality (9). Several haemostatic-system abnormalities such as
34 thrombocytopenia, elevated D-dimer levels, prolonged prothrombin time (PT) or
35 activated partial thromboplastin time (APTT), decreased factor V activity,
36 hypofibrinogenemia and reduced levels of natural anticoagulants (e.g antithrombin)
37 appear with increasing disease severity and are linked to death (6, 8) (10). However, the
38 bidirectional relationship between SARS-CoV-2 and the coagulation system is still not
39 completely understood (4). A predominant increase of D-dimer is typical, and its
40 presence on admission has been repeatedly described as significantly higher in non-
41 survivors (11) but scarce or no abnormalities in PT and APTT are usually found at disease
42 onset (5, 12). To date, coagulation markers measured in the early phase of COVID-19

43 have evidenced a complex scenario and elucidation of the pathophysiology of
44 immunothrombosis is evolving. Therefore, to continue unravelling the insights of COVID-
45 19-induced coagulopathies, we evaluate several coagulation proteins at an early stage
46 of disease onset and their association with the highest disease severity and mortality.

47 **METHODS**

48 **Design and study population**

49 Cross-sectional study in 128 COVID-19 patients enrolled from March to September 2020
50 at three hospitals in Madrid (Infanta Leonor University Hospital, Aranjuez University
51 Hospital and Príncipe de Asturias University Hospital). The study protocol was approved
52 by the Ethics Committee of the Institute of Health Carlos III (PI 33_2020-v3) and the
53 Ethics Committee of each hospital.

54 Patients were classified according to their highest severity grade during the course of
55 COVID-19, (**Supplementary Figure 1**): 1) Severe: i) death during hospitalization, ii) ICU
56 admission, iii) invasive mechanical ventilation; or iv) presence of bilateral pulmonary
57 infiltrates, mechanical ventilation and oxygen saturation (SatO_2) $\leq 93\%$; 2) Moderate: the
58 remaining hospitalized patients who did not fulfill severe COVID-19 criteria; 3)
59 Asymptomatic/Mild (AM): individuals who had minor or no COVID-19 symptoms; 4) A
60 control group of 16 pre-pandemic healthy controls without any known infection was
61 included. The STROBE-ID checklist was used to strength the design and conduct the
62 study.

63 **Clinical data and samples**

64 Epidemiological, clinical, disease evolution data, as well as laboratory parameters such
65 as PT, international normalized ratio (INR) and APTT were collected from clinical records

66 using an electronic case report form (eCRF) which was built using REDCap (13). Plasma
67 samples were obtained after centrifugation blood in EDTA tubes at hospital admission
68 (median = 2 days, IQR = 4 days). Samples were processed at the National Center for
69 Microbiology (Majadahonda), Institute of Health Carlos III (Madrid, Spain).

70 **Coagulation proteins**

71 Coagulation proteins (antithrombin, prothrombin, factor XI, factor XII and factor XIII)
72 were measured by ProcartaPlex Panel (Invitrogen) multiplex immunoassay by using a
73 Luminex 200™ analyzer (Luminex Corporation, United States) according to the
74 manufacturer's specifications.

75 **Statistical Analysis**

76 As outcome variables, the highest disease severity during COVID-19 infection and the
77 mortality were considered. For descriptive data, differences between groups were
78 tested using Chi² or Fisher's exact test with Monte Carlo simulated p-value for
79 categorical and Kruskal-Wallis test for continuous variables. The association between
80 coagulation proteins, measured in the first days of disease, and the severity was
81 explored using generalized linear mixed models (GLMM) (See Supplementary material
82 and methods for extended information). Survival time was defined as time between
83 hospitalization and death, and individuals alive at 90 days were considered censored
84 data. Survival curves were modelled using Kaplan Meier method and log rank test was
85 performed to assess univariate differences in survival time according to coagulant
86 proteins tertiles levels. Death risk was estimated with the Cox Proportional-Hazard and
87 Aalen's additive models. Age and sex were included as covariables. Two-sided tests were
88 used for all statistical methods. Analyses were performed using the R 4.0.3 software.

89 RESULTS

90 Patient's characteristics are shown in **Table 1**. Coagulation proteins were mostly
91 measured before therapy administration, and no associations were found with
92 comorbidities, chronic medications or COVID-19 presenting (**Supplementary Table 1**,
93 **Supplementary Figure 2**), showing no prior bias. Additionally, APTT and PT (INR) levels
94 did not show differences among the three groups of COVID-19 (**Supplementary Figure**
95 **3**).

96 Distribution of antithrombin, prothrombin, factor XI, factor XII and factor XIII protein
97 levels for each disease severity group is shown in **Figure 1A**. Statistical differences
98 between severity groups are shown through the GLMM in **Figure 2**. AM, moderate and
99 severe individuals had higher concentrations of coagulation proteins compared to
100 healthy individuals. Also, we detected a significant reduction of factor XI, factor XII and
101 factor XIII concentration in severe patients respect to moderate individuals (**Figure 2**;
102 **Supplementary Table 2**). These pairwise differences between COVID-19 severity groups
103 were also detected at individual protein level (**Figure 2**; **Supplementary Table 3**). Kaplan-
104 Meier analyses showed that the patients with lower levels of the analysed proteins had
105 an increased risk of death during hospitalization (**Figure 1B**). For antithrombin,
106 prothrombin, factor XI and XIII, this increase is more accentuated in men
107 (**Supplementary Figure 4**). The effect of proteins levels on the survival is confirmed by
108 the Cox proportional-hazard models and Aalen's additive regression (**Supplementary**
109 **Table 4**). Both models found a significant effect of the different coagulation proteins on
110 the survival. These models found a negative correlation between the proteins'
111 concentration and the time of survival (**Supplementary Table 4**). A reduction in the
112 coagulation proteins concentration involves a higher risk of death, however, the effect

113 size was slight for each individual protein (**Supplementary Table 4**). ROC curves showed
114 that the addition of the coagulation proteins to the basic model composed by sex and
115 age slightly improved the survival prediction although was not significant
116 (**Supplementary Figure 5**).

117 **DISCUSSION**

118 Our study shows that coagulation protein levels are affected at the first stages of the
119 COVID-19 infection and that those early changes already reflect disease severity in its
120 acute phase. We report increased levels of antithrombin, prothrombin, factor XI, factor
121 XII and factor XIII in AM and moderate patients, compared to healthy individuals. The
122 increase in natural anticoagulant and procoagulant proteins in COVID-19 has been
123 attributed to thromboinflammatory response caused by SARS-CoV-2, which provokes
124 endotheliitis and increases the hepatic production of factors (14). These could explain
125 the increases of clotting proteins found in our study even in early and mild stages. In
126 contrast, significantly decreased levels of antithrombin, factor XI, XII and XIII were found
127 at presentation in severe with respect to moderate patients. Therefore, an early reduced
128 production or more likely increased consumption due to pulmonary or systemic
129 coagulopathy of clotting proteins in severe cases could predict a poor prognosis. Results
130 of the survival models are in accordance with previous studies (15) that show a
131 consumption of coagulation proteins among COVID-19 non-survivors. Besides, it is
132 important to note that this negative association was more pronounced in men.

133 Several limitations should be considered. First one is the limited sample size, of healthy
134 and asymptomatic cases, which could have limited the possibility to find statistical
135 significance differences in some comparisons. Second one is that we have analysed five

136 coagulation protein; as coagulation cascade is extremely complex, further studies
137 should consider additional factors to fully describe the COVID-19 effects over the entire
138 coagulation cascade. However, these additional factors have been extensively studied,
139 and we analysed those that were not previously addressed.

140 In conclusion, our results indicate that: 1) COVID-19 causes an early increase of some
141 specific coagulation proteins such as antithrombin, prothrombin, contact factors and
142 factor XIII in most patients, even in those who won't suffer from clinically significant
143 disease, suggesting that commonly elevated D-dimer levels are driven by an initial
144 enhanced procoagulant state and not just by hyperfibrinolysis; 2) Although not reflected
145 in routine tests such as PT and APTT, and despite common initial hyperfibrinogenemia,
146 patients who will eventually advance to severe disease show early decreased levels of
147 these anticoagulant and procoagulant markers, suggesting factor consumption, as these
148 levels were associated with higher COVID-19 related mortality. Evolving investigations
149 will allow us to better clarify the crosstalk between the immune and clotting systems in
150 this pandemic disease.

151 **CONFLICT OF INTEREST**

152 The authors declare that they have no competing interests.

153

154 **FUNDING**

155 This study was supported by grants from Instituto de Salud Carlos III (ISCIII; grant
156 number COV20/1144 [MPY224/20] to AFR/MAJS). AFR, MAJS and MR are Miguel Servet
157 researchers supported and funded by ISCIII (grant numbers: CP14CIII/00010 to AFR,
158 CP17CIII/00007 to MAJS and CP19CIII/00002 to MR).

159

160 **ACKNOWLEDGEMENTS**

161 This study would not have been possible without the collaboration of all the patients,
162 their families, medical and nursery staff, and data managers who have taken part in the
163 project.

164

165 **ACCESS TO DATA**

166 All data are available upon request to corresponding authors.

167

168 **CONTRIBUTION**

169 Funding body: AFR and MAJS.

170 Study concept and design: AFR, MAJS and FCC

171 Patients' selection and clinical data acquisition: PR, RBGC, MMV, AVB, OBK, FCC, FPG,

172 OMG, CVM, NB, IRMA.

173 Sample preparation, and biomarker analysis: MMV, AVB, EJVA, SB, OBK.

174 Statistical analysis and interpretation of data: FCC, AFR, and MAJS.

175 Writing of the manuscript: FCC, AFR, and MAJS.

176 Critical revision of the manuscript for relevant intellectual content: PR, RBGC, FPG, JCZ,

177 OMG, MR, PME, CJ, SR.

178 Supervision and visualization: AFR and MAJS.

179 All authors read and approved the final manuscript.

180

181

182 **REFERENCES**

183 1. Grimnes G, Isaksen T, Tichelaar YIGV, Brækkan SK, Hansen JB. Acute infection as
184 a trigger for incident venous thromboembolism: Results from a population-based case-
185 crossover study. *Res Pract Thromb Haemost.* 2018;2(1):85-92.
186 2. Hadid T, Kafri Z, Al-Katib A. Coagulation and anticoagulation in COVID-19. *Blood*
187 *Rev.* 2020:100761.
188 3. Poissy J, Goutay J, Caplan M, Parmentier E, Duburcq T, Lassalle F, et al. Pulmonary
189 Embolism in Patients With COVID-19: Awareness of an Increased Prevalence.
190 *Circulation.* 2020;142(2):184-6.
191 4. Iba T, Connors JM, Levy JH. The coagulopathy, endotheliopathy, and vasculitis of
192 COVID-19. *Inflamm Res.* 2020;69(12):1181-9.
193 5. Asakura H, Ogawa H. COVID-19-associated coagulopathy and disseminated
194 intravascular coagulation. *Int J Hematol.* 2020.
195 6. Helms J, Tacquard C, Severac F, Leonard-Lorant I, Ohana M, Delabranche X, et al.
196 High risk of thrombosis in patients with severe SARS-CoV-2 infection: a multicenter
197 prospective cohort study. *Intensive Care Med.* 2020;46(6):1089-98.
198 7. Muñoz-Rivas N, Abad-Motos A, Mestre-Gómez B, Sierra-Hidalgo F, Cortina-
199 Camarero C, Lorente-Ramos RM, et al. Systemic thrombosis in a large cohort of COVID-
200 19 patients despite thromboprophylaxis: A retrospective study. *Thromb Res.*
201 2021;199:132-42.
202 8. Tang N, Li D, Wang X, Sun Z. Abnormal coagulation parameters are associated
203 with poor prognosis in patients with novel coronavirus pneumonia. *J Thromb Haemost.*
204 2020;18(4):844-7.
205 9. Bilaloglu S, Aphinyanaphongs Y, Jones S, Iturrate E, Hochman J, Berger JS.
206 Thrombosis in Hospitalized Patients With COVID-19 in a New York City Health System.
207 *JAMA.* 2020;324(8):799-801.
208 10. Stefely JA, Christensen BB, Gogakos T, Cone Sullivan JK, Montgomery GG,
209 Barranco JP, et al. Marked factor V activity elevation in severe COVID-19 is associated
210 with venous thromboembolism. *Am J Hematol.* 2020;95(12):1522-30.
211 11. Zhang L, Yan X, Fan Q, Liu H, Liu X, Liu Z, et al. D-dimer levels on admission to
212 predict in-hospital mortality in patients with Covid-19. *J Thromb Haemost.*
213 2020;18(6):1324-9.
214 12. Levi M, Iba T. COVID-19 coagulopathy: is it disseminated intravascular
215 coagulation? *Intern Emerg Med.* 2020.
216 13. Harris PA, Taylor R, Minor BL, Elliott V, Fernandez M, O'Neal L, et al. The REDCap
217 consortium: Building an international community of software platform partners. *J*
218 *Biomed Inform.* 2019;95:103208.
219 14. Wise J. Covid-19 and thrombosis: what do we know about the risks and
220 treatment? *BMJ.* 2020;369:m2058.
221 15. Martín-Rojas RM, Pérez-Rus G, Delgado-Pinos VE, Domingo-González A,
222 Regalado-Artamendi I, Alba-Urdiales N, et al. COVID-19 coagulopathy: An in-depth
223 analysis of the coagulation system. *Eur J Haematol.* 2020;105(6):741-50.

224

225

226 **FIGURE LEGENDS**

227 **Figure 1. Coagulation proteins levels regarding COVID-19 severity and survival analysis**
228 **for each of the coagulation proteins analysed in this study. A.** Boxplots of healthy
229 (purple, n=16), AM (blue, n=13), moderate (green, n=68) and severe (yellow, n=47)
230 individuals. P-values from ordinal logistic regression (OLR) are shown in each boxplot. **B.**
231 Kaplan-Meier plot. The cut-offs of coagulation proteins for the Kaplan-Meier plot were
232 obtained using three quantiles to get low (blue), medium (yellow) and high (pink)
233 percentage of the reference plasma. The specific categorical levels by using tertiles were
234 as follows: Antithrombin: low [12.14 – 41.3], medium [41.3 – 54.1], high [54.1 – 136.7].
235 Prothrombin: low [16.3 – 48.7], medium [48.7 – 72.2], high [72.2 – 545]. Factor XI: low
236 [10.8 – 56.4], medium [56.4 – 90.1], high [90.1 – 200.9]. Factor XII: low [11.7 – 47.8],
237 medium [47.8 – 87.1], high [87.1 – 301.9]. Factor XIII: low [8.3 – 82.6], medium [82.6 –
238 118.3], high [118.3 – 242.7]. **Abbreviations:** AM, Asymptomatic/Mild patients; OLR,
239 ordinal logistic regression.

240

241 **Figure 2. Pairwise association between coagulation protein levels and the different**
242 **severity classes. Statistics:** Pairwise comparisons between COVID-19 severity classes
243 were obtained using a logistic mixed model where the protein was considered a random
244 effect. (see Supplementary Material and Methods). Pairwise comparisons within each
245 protein were obtained using multiple logistic regression analysis. The False Discovery
246 Rate or FDR was used to cope with multiple testing, q-values are provided.
247 **Abbreviations:** AM, Asymptomatic/Mild patients.

248

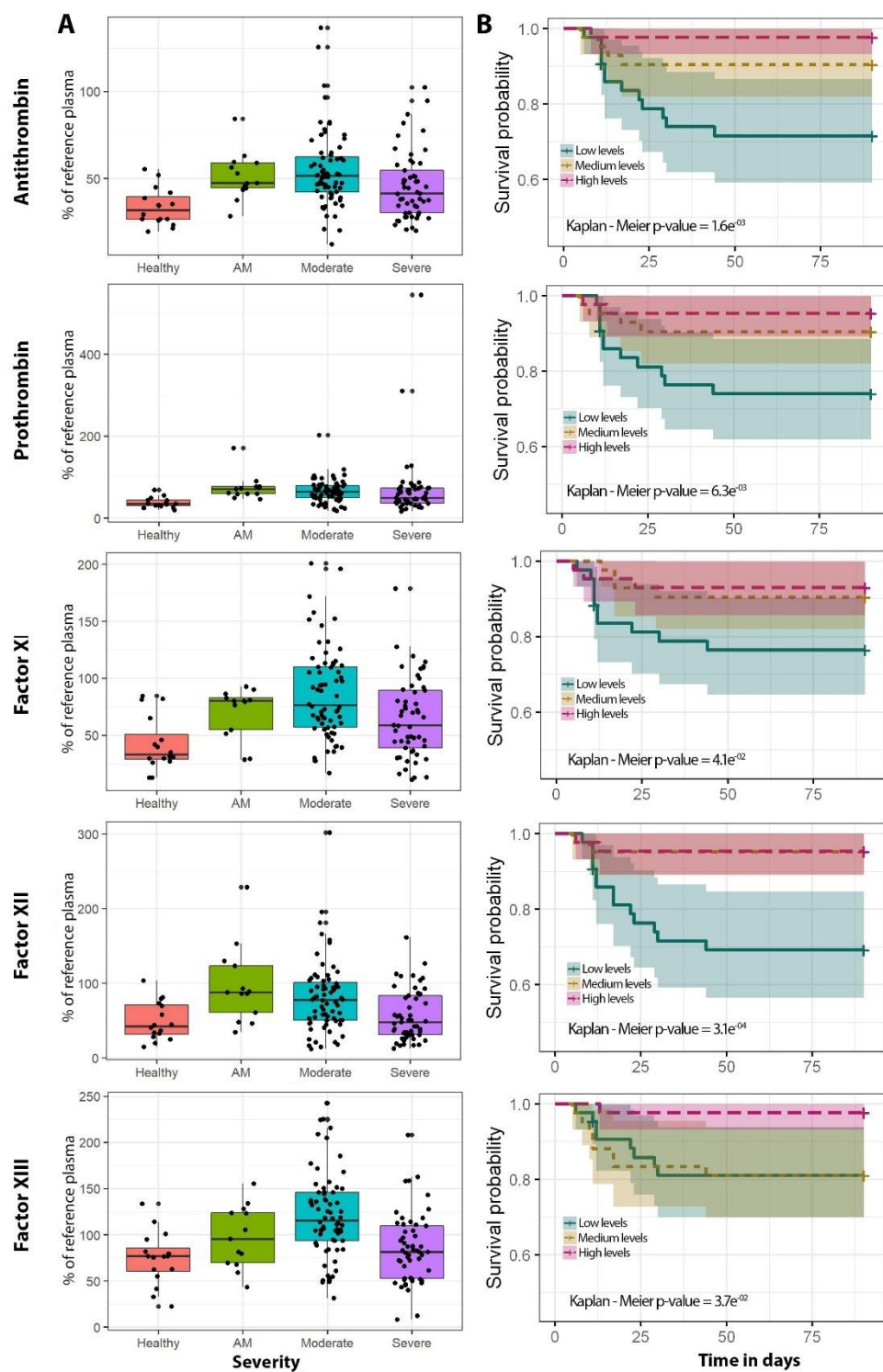
249

250 **Table 1. Patient's characteristics.** Patients were classified according to the highest disease severity
 251 reached during the COVID-19 evolution. Denominator indicates number of patients with available data.
 252 **Statistics:** Individual characteristics were summarized using standard descriptive statistics: mean ±
 253 standard deviation for continue variables and count (percentage) for categorical variables. Differences
 254 between groups were tested using Fisher's exact test. No statistically significant association was found
 255 between covariates and disease severity with the exception of the following treatments:
 256 Cloroquine/hydroxychloroquine (Fisher's exact test = $1.6e^{-05}$), Tocilizumab (Fisher's exact test = $8.1e^{-05}$),
 257 corticosteroids (Fisher's exact test = $5.7e^{-08}$), and the use of supplemental oxygen (Fisher's exact test =
 258 $3.2.e^{-07}$). **Abbreviations:** NA, non-available ; BMI, body mass index; NSAIDs, Nonsteroidal anti-
 259 inflammatory drugs; ACE, Angiotensin-converting-enzyme; ARBs, angiotensin II inhibitors; HIV, human
 260 immunodeficiency virus; ICU, intensive care unit.
 261

	COVID-19 Severity			
	Healthy	Asymptomatic/Mild	Moderate	Severe
Demographics				
N	16	13	68	47
Age	58.8 ±12.3	64.3 ±18.1	61.1 ±15.3	62.1 ±18.1
Gender (male)	9/16 (56.2%)	5/13 (38.4%)	38/68 (55.8%)	33/47 (70.2%)
BMI>=25	8/11 (72.7%)	2/12 (16.6%)	11/68 (16.1%)	13/47 (27.6%)
Smoke status (Yes)	NA	2/13 (15.3%)	3/68 (4.4%)	3/47 (6.3%)
Former smoker	NA	4/13 (30.7%)	8/68 (11.7%)	11/47 (23.4%)
Comorbidities				
Hypertension	NA	5/13 (38.4%)	30/68 (44.1%)	23/47 (48.9%)
Cardiopathy	NA	4/13 (30.7%)	12/68 (17.6%)	8/47 (17.0%)
Chronic pulmonary disease	NA	0/13 (0%)	8/68 (11.7%)	10/47 (21.2%)
Chronic kidney disease	NA	2/13 (15.3%)	4/68 (5.8%)	9/47 (19.1%)
Chronic liver disease	NA	NA	4/65 (6.2%)	2/47 (4.2%)
Chronic neurological disease	NA	0/13 (0%)	9/67 (13.4%)	8/47 (17.0%)
Neoplasia	NA	NA	3/63 (4.8%)	4/47 (8.5%)
Diabetes	NA	2/13 (15.3%)	10/68 (14.7%)	11/47 (23.4%)
Chronic inflammatory disease	NA	NA	2/63 (3.1%)	5/47 (10.6%)
Autoimmune disease	NA	NA	1/63 (1.5%)	4/47 (8.5%)
Therapy				
Chronic medications				
NSAIDs	NA	0/13 (0%)	0/68 (0%)	7/47 (14.9%)
ACE inhibitors	NA	0/13 (0%)	15/68 (22.3%)	11/47 (23.4%)
ARBs	NA	1/13 (7.6%)	7/68 (10.4%)	8/47 (17.0%)
Corticosteroids	NA	NA	6/68 (9.5%)	6/47 (12.8%)
HIV antiretrovirals	NA	NA	1/68 (1.5%)	1/47 (2.1%)
Treatment				
Chloroquine and hidroxychloroquine	0/16 (0%)	0/13 (0%)	62/63 (98.4%)	33/47 (70.2%)
Tocilizumab	0/16 (0%)	0/13 (0%)	10/67 (15.0%)	20/47 (42.5%)
Corticosteroids	0/16 (0%)	0/13 (0%)	26/67 (38.8%)	40/47 (85.1%)
COVID-19 related symptoms				
Dyspnoea	0/16 (0%)	0/13 (0%)	43/68 (63.2%)	41/47 (87.2%)
Cough	0/16 (0%)	0/13 (0%)	48/63 (76.1%)	34/47 (72.3%)
Headache	0/16 (0%)	0/13 (0%)	24/63 (38.1%)	10/47 (21.2%)
Diarrhea or abdominal pain	0/16 (0%)	0/13 (0%)	33/63 (52.4%)	19/47 (40.4%)
Hospitalization				
Length of stay (days)	0/16 (0%)	0/13 (0%)	10.7 ± 8.6	22.1 ± 15.6
Maximum Temperature	NA	NA	37.8 ± 0.8	38.2 ± 0.8
Oxygen therapy	0/16 (0%)	0/13 (0%)	39/68 (57.3%)	47/47 (100%)
Non-Invasive mechanical ventilation	0/16 (0%)	0/13 (0%)	3/67 (4.5%)	20/47 (38.99%)
Invasive mechanical ventilation	0/16 (0%)	0/13 (0%)	0/67 (0%)	18/47 (38.2%)
Pulmonary infiltrates	0/16 (0%)	0/13 (0%)	60/68 (88.2%)	47/47 (100%)
ICU				
ICU length of stay	0	0	0	6.61 ± 13.5
Death	0/16 (0%)	0/13 (0%)	0/68 (0%)	18/47 (38.3%)

262

263 **Figure 1**



264

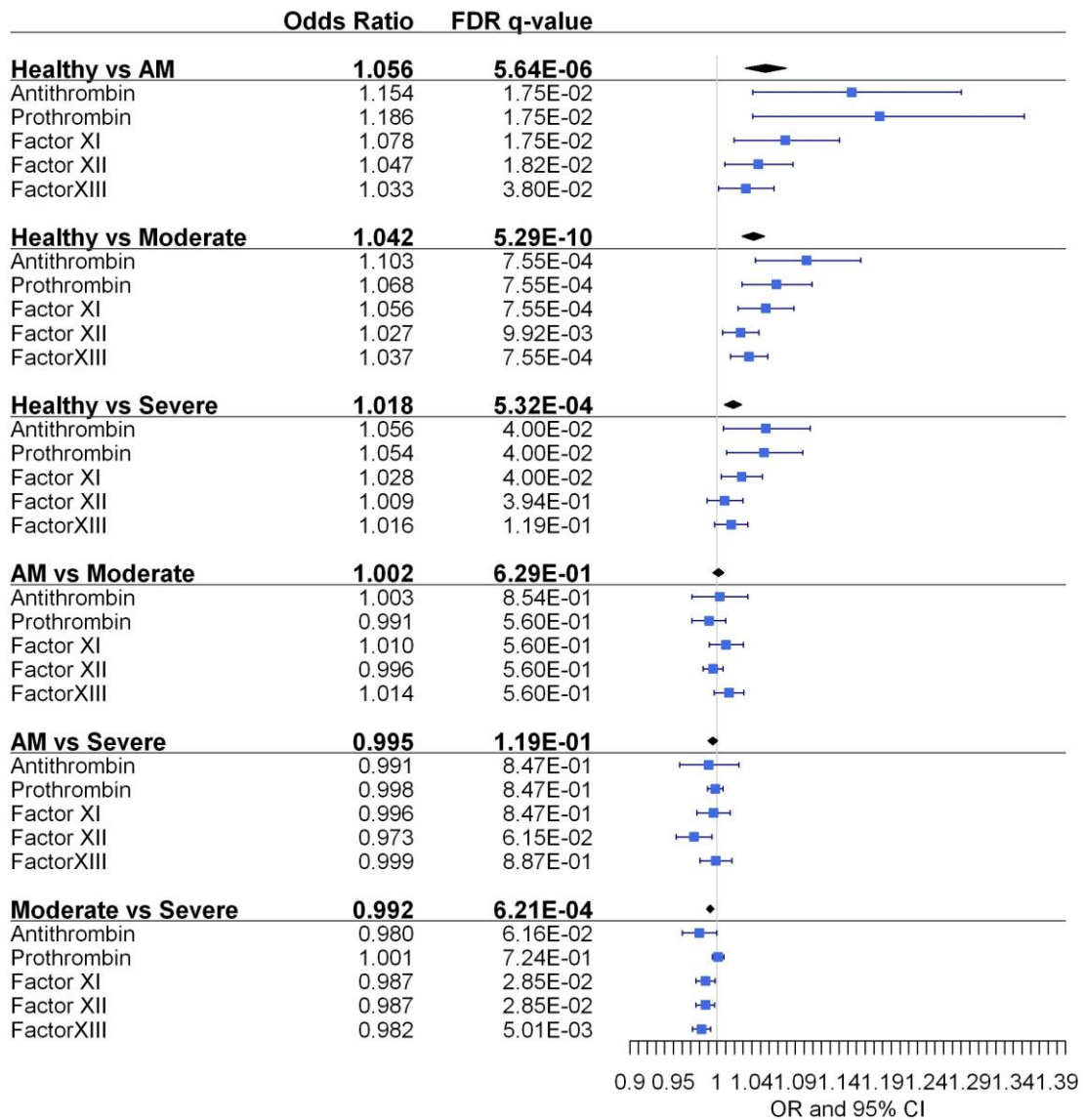
265

266

267

268

269 **Figure 2.**



270

271

272

273

274

275

276

277

278

279

280 **SUPPLEMENTARY MATERIAL AND METHODS.**

281 **Statistical Analysis**

282 We use a generalized linear mixed model (GLMM) to test the pairwise difference among disease
283 severity classes by grouping the four coagulation proteins analysed in this study. We fit a model
284 where the protein was considered a random effect:

285

$$286 Y_{Severity\ class\ A, severity\ class\ B} = (\beta_0 + b_{p,0p}) + \beta_1 X_i \beta_2 X_j + \beta_3 X_k + e_{pijk} \quad (1)$$

287

288 Where $b_{p,0p}$ is the random effect of each coagulation protein, $\beta_1 X_i$ is the fixed effect of the protein
289 concentrations, $\beta_2 X_j$ is the fixed effect of the age and $\beta_3 X_k$ is the fixed effect of the sex. By using
290 this model, we tested whether we were able to detect general effects between disease severity
291 classes. We were also interested in study the behaviour each coagulation protein. Pairwise
292 comparisons between disease severity classes, for each protein, were carried out using
293 multivariable logistic regressions. Sex and age were included as covariables in the multivariable
294 analysis.

295 Survival Cox Proportional-Hazard model's goodness of fit was evaluated by the Harrel's
296 concordance index (C-index). This index ranges from 0 to 1 and the intuition behind it is that, if
297 the risk model is good, patients who had shorter times-to-death should have higher risk scores.
298 Values of C-index near 0.5 indicates that the risk score predictions are not better than chance in
299 determining which individual with die first. Coagulation proteins discrimination capabilities were
300 measured by the area under the receiver operating characteristic (ROC) curve.

301

302

303

304 **Supplementary Table 1. Differences in the levels of coagulation proteins regarding discrete**
 305 **covariables.**

	Antithrombin	Prothrombin	Factor_XI	Factor_XII	Factor_XIII
Sex	0.996	0.933	0.933	0.971	0.623
BMI>=25	0.832	0.683	0.683	0.799	0.623
Smoker	0.600	0.323	0.364	0.517	0.314
Hypertension	0.832	0.683	0.683	0.872	0.623
Cardiopathy	0.832	0.933	0.933	0.799	0.658
Chronic pulmonary disease	0.832	0.323	0.364	0.517	0.917
Chronic kidney disease	0.832	0.323	0.364	0.799	0.314
Chronic liver disease	0.947	0.683	0.683	0.872	0.658
Chronic neurological disease	0.832	0.933	0.933	0.872	0.623
Neoplasia	0.832	0.683	0.683	0.872	0.624
Diabetes	0.956	0.933	0.933	0.948	0.314
Chronic inflammatory disease	0.625	0.933	0.933	0.872	0.413
Autoimmune disease	0.996	0.933	0.933	0.872	0.643
NSAIDs	0.947	0.718	0.718	0.958	0.658
ACE inhibitors	0.947	0.683	0.683	0.932	0.658
ARBs	0.947	0.683	0.683	0.932	0.623
Dyspnoea	0.996	0.683	0.683	0.932	0.658
Cough	0.996	0.683	0.683	0.981	0.658
Headache	0.915	0.946	0.946	0.902	0.314
Diarrhea or abdominal pain	0.600	0.323	0.364	0.517	0.717

306

307 **Statistics:** Differences were evaluated by Kruskal Wallis rank sum test (False Discovery Rate
 308 (FDR) q-values for the Kruskal Wallis are shown). **Abbreviations:** BMI, body mass index;
 309 NSAIDs, Nonsteroidal anti-inflammatory drugs; ACE, Angiotensin-converting-enzyme; ARBs,
 310 angiotensin II inhibitors.

311

312 **Supplementary Table 2. Pairwise differences between COVID-19 severity classes.**

	OR	2.5%	97.5%	FDR q-value
Healthy vs AM				
Prot. Concentration	1.056	1.033	1.080	5.64E-06
Age	0.946	0.918	0.976	4.12E-04
Sex	0.289	0.119	0.700	5.98E-03
Healthy vs Moderate				
Prot. Concentration	1.042	1.029	1.055	5.29E-10
Age	0.983	0.965	1.001	7.07E-02
Sex	1.222	0.705	2.119	4.76E-01
Healthy vs Severe				
Prot. Concentration	1.018	1.008	1.028	5.32E-04
Age	1.004	0.987	1.021	6.74E-01
Sex	2.428	1.420	4.151	1.19E-03
AM vs Moderate				
Prot. Concentration	1.002	0.995	1.008	6.29E-01
Age	1.021	1.005	1.037	1.04E-02
Sex	3.181	1.785	5.670	8.65E-05
AM vs Severe				
Prot. Concentration	0.995	0.990	1.001	1.19E-01
Age	1.018	1.002	1.034	2.72E-02
Sex	5.297	2.889	9.715	7.11E-08
Moderate vs Severe				
Prot. Concentration	0.992	0.988	0.997	6.21E-04
Age	1.010	0.999	1.021	6.87E-02
Sex	1.918	1.335	2.755	4.26E-04

313

314 **Statistics:** A general linear mixed model (GLMM) was fit considering the coagulation protein a
 315 random effect. Protein concentration, age and sex were considered fixed effects. Odds ratio,
 316 95% confidence intervals (lower boundary: 2.5%, upper boundary: 97.5%), and the False
 317 Discovery Rate (FDR) q-values are shown for every model.

318

319

320

321

322

323 **Supplementary Table 3. Association between coagulation proteins and COVID-19 severity.**

	OR	2.5%	97.5%	FDR q-value
Healthy vs AM				
Antithrombin	1.155	1.041	1.280	1.75E-02
Prothrombin	1.187	1.041	1.353	1.75E-02
Factor XI	1.078	1.019	1.141	1.75E-02
Factor XII	1.047	1.009	1.087	1.82E-02
Factor XIII	1.033	1.002	1.065	3.80E-02
Healthy vs Moderate				
Antitrombin	1.103	1.044	1.165	7.55E-04
Prothrombin	1.068	1.029	1.109	7.55E-04
Factor XI	1.056	1.024	1.088	7.55E-04
Factor XII	1.027	1.006	1.048	9.92E-03
Factor XIII	1.037	1.016	1.058	7.55E-04
Healthy vs Severe				
Antitrombin	1.056	1.007	1.107	4.00E-02
Prothrombin	1.054	1.011	1.099	4.00E-02
Factor XI	1.028	1.005	1.052	4.00E-02
Factor XII	1.009	0.989	1.030	3.94E-01
Factor XIII	1.016	0.997	1.036	1.19E-01
AM vs Moderate				
Antitrombin	1.003	0.971	1.036	8.54E-01
Prothrombin	0.991	0.972	1.010	5.60E-01
Factor XI	1.010	0.991	1.030	5.60E-01
Factor XII	0.996	0.984	1.007	5.60E-01
Factor XIII	1.014	0.997	1.031	5.60E-01
AM vs Severe				
Antitrombin	0.991	0.957	1.025	8.47E-01
Prothrombin	0.998	0.989	1.007	8.47E-01
Factor XI	0.996	0.977	1.015	8.47E-01
Factor XII	0.973	0.953	0.994	6.15E-02
Factor XIII	0.999	0.981	1.017	8.87E-01
Moderate vs Severe				
Antitrombin	0.980	0.960	1.000	6.16E-02
Prothrombin	1.001	0.995	1.008	7.24E-01
Factor XI	0.987	0.976	0.998	2.85E-02
Factor XII	0.987	0.976	0.997	2.85E-02
Factor XIII	0.982	0.972	0.993	5.01E-03

324

325 **Statistics:** Pairwise logistic regression models were fit for each protein and pair of COVID-19
 326 severity classes. Age and sex were added in each model as covariables. Odds ratio, 95%
 327 confidence intervals (lower boundary: 2.5%, upper boundary: 97.5%), and the False Discovery
 328 Rate (FDR) q-values are shown for every model.

329

330

331

332

333

334

335

336

337 **Supplementary Table 4. Survival analysis in COVID-19 patients according to coagulation**
 338 **proteins' levels.**

Cox Proportional- Hazard	Cox Proportional-Hazard			Aalen's Additive Regression	
	HR	p-value	C-index	Coefficient	p-value
Antithrombin			0.865 ±0.035		
Antithrombin	0.959	1.38E-03		-1.84E-02	1.17E-03
Age	1.091	2.23E-05		6.12E-04	5.64E-05
Sex	2.282	1.43E-01		7.87E-03	9.12E-03
Prothrombin			0.819 ±0.056		
Prothrombin	1.005	9.43E-02		5.62E-05	7.23E-01
Age	1.106	1.17E-06		5.85E-05	7.01E-05
Sex	3.273	3.06E-02		6.91E-03	1.05E-01
Factor_XI			0.832 ±0.045		
Factor_XI	0.987	1.77E-01		-1.25E-04	5.81E-03
Age	1.091	1.87E-05		6.24E-04	5.41E-04
Sex	2.692	7.41E-03		7.21E-03	7.74E-03
Factor_XII			0.851 ±0.043		
Factor_XII	0.981	3.36E-03		-8.92E-05	8.52E-03
Age	1.085	3.73E-05		5.65E-04	7.97E-04
Sex	2.312	1.31E-01		6.28E-03	1.48E-01
Factor_XIII			0.851 ±0.044		
Factor_XIII	0.971	2.34E-03		-1.28E-03	2.61E-04
Age	1.098	7.07E-06		6.34E-04	5.47E-04
Sex	2.141	1.89E-02		5.91E-03	1.56E-01

339

340 **Statistics:** Cox Proportional-Hazard and Aalen's Additive Regression. Hazard ratio, p-values and
 341 Harrell's concordance index (C-index) are shown for the Cox models. C-index is a goodness of fit
 342 measure for models that produces risk scores. Models with higher C-index indicate a shorter
 343 time-to-disease for those patients with higher risk score. A C-index's value of 0.5 entails that the
 344 risk score predictions are no better than chance. Values near 1 indicates perfect separation of
 345 patients with different outcomes. Regression coefficients and their associated p-values are also
 346 shown for the Aalen's models. The Aalen model allows for time-varying covariate effects.
 347 Regarding the covariables it is possible to notice that age and sex have a positive and significant
 348 effect over mortality. Abbreviations: HR, hazard ratio.

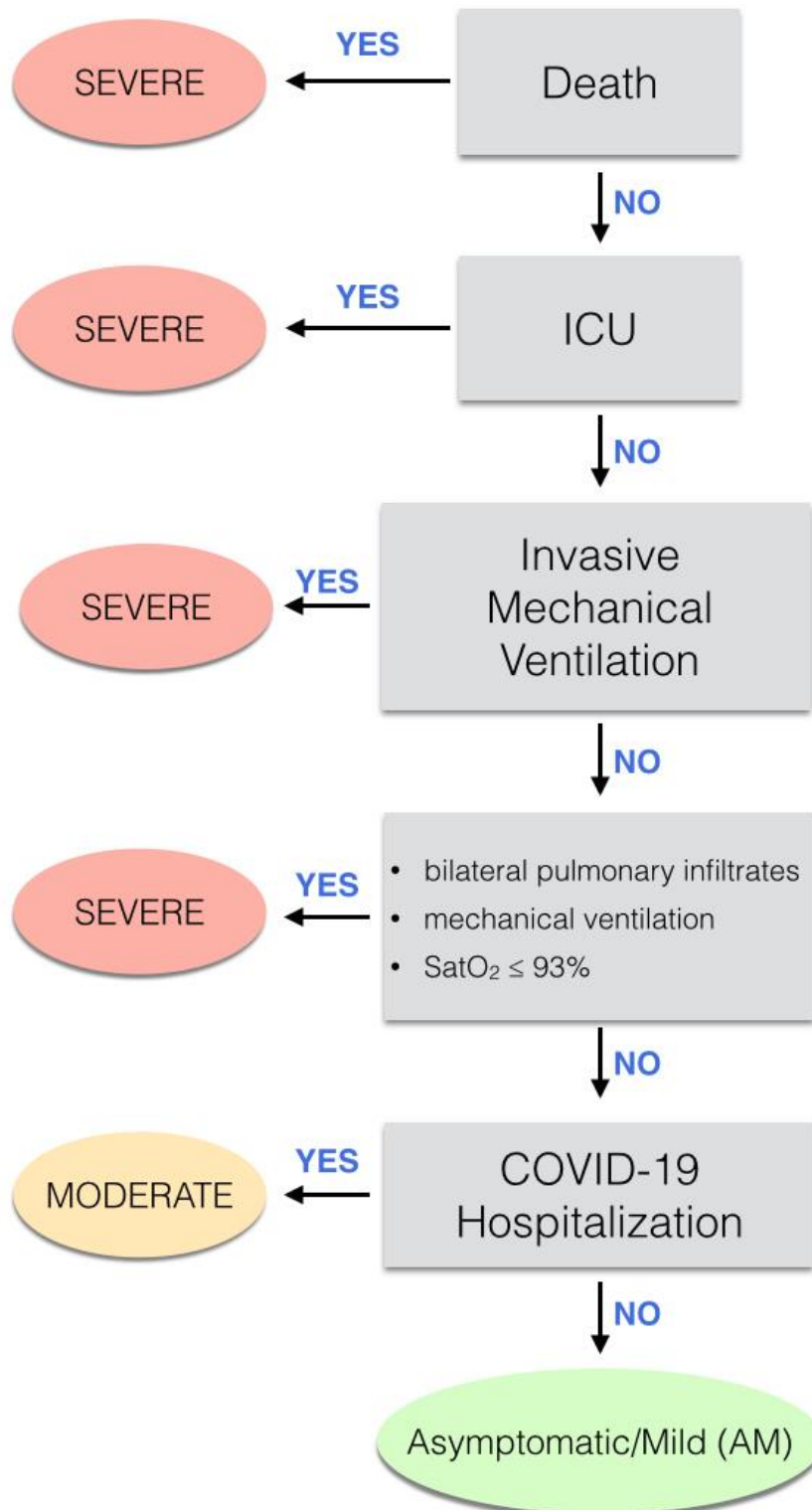
349

350

351

352

353 **Supplementary Figure 1. Flowchart describing the classification of patients with respect to**
354 **COVID-19 severity.**



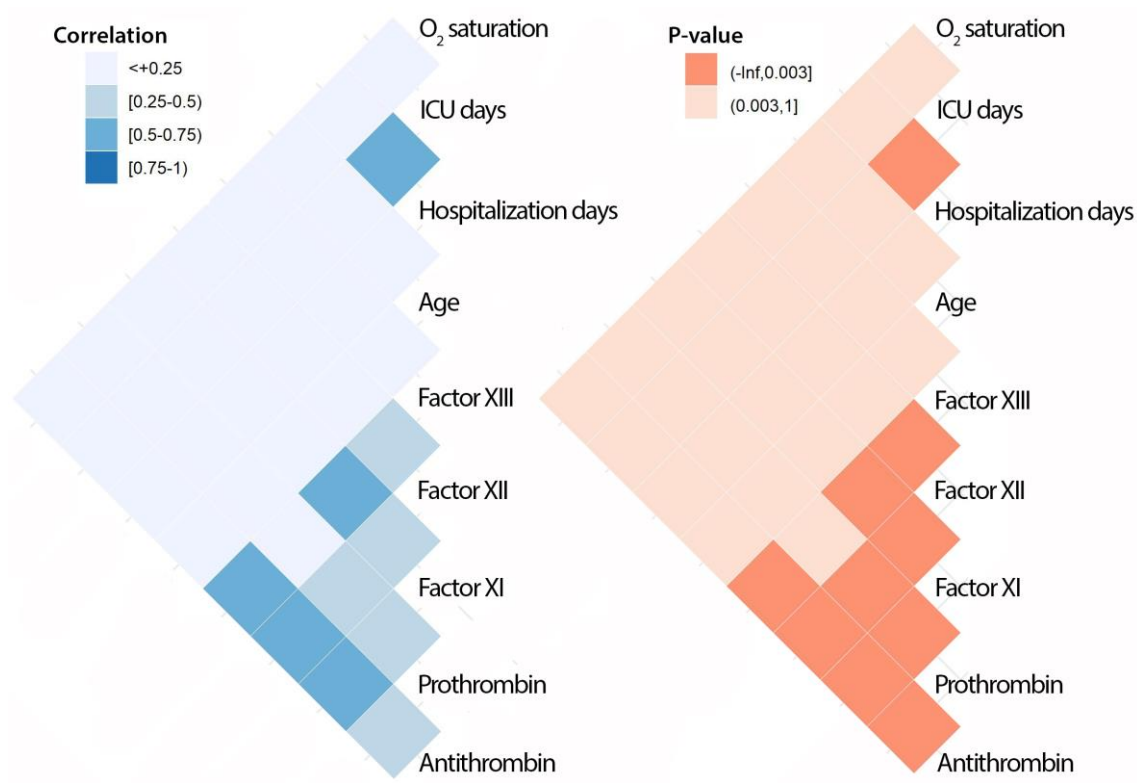
355

356 **Abbreviations:** ICU. Intensive care unit; ARDS, acute respiratory distress syndrome; AM:
357 asymptomatic/mild patients.

358

359 **Supplementary Figure 2. Correlation between coagulation proteins and continuous**
360 **covariables related to severity.**

361



362

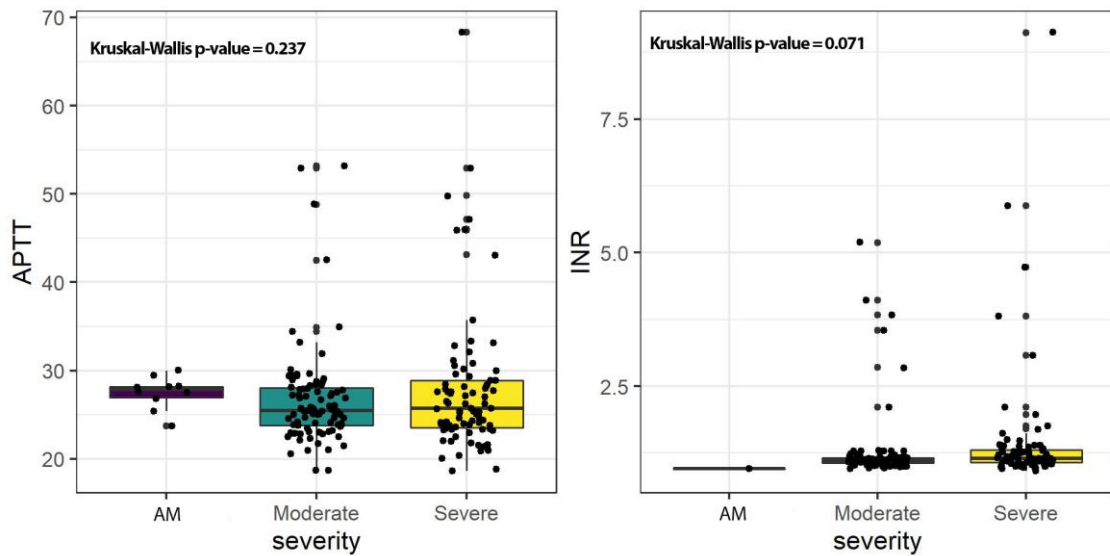
363 **Statistics:** Pearson correlation. Heatmaps are provided for the correlation coefficients and its
364 associated p-values. A regular Bonferroni correction for multiple testing was applied, being
365 significance set at $3.0e^{-03}$. **Abbreviations:** O₂, oxygen; ICU, intensive care unit.

366

367

368 **Supplementary Figure 3. Differences in activated partial thromboplastin time (APTT) and**
369 **international normalized ratio (INR) between the severity groups.**

370



371

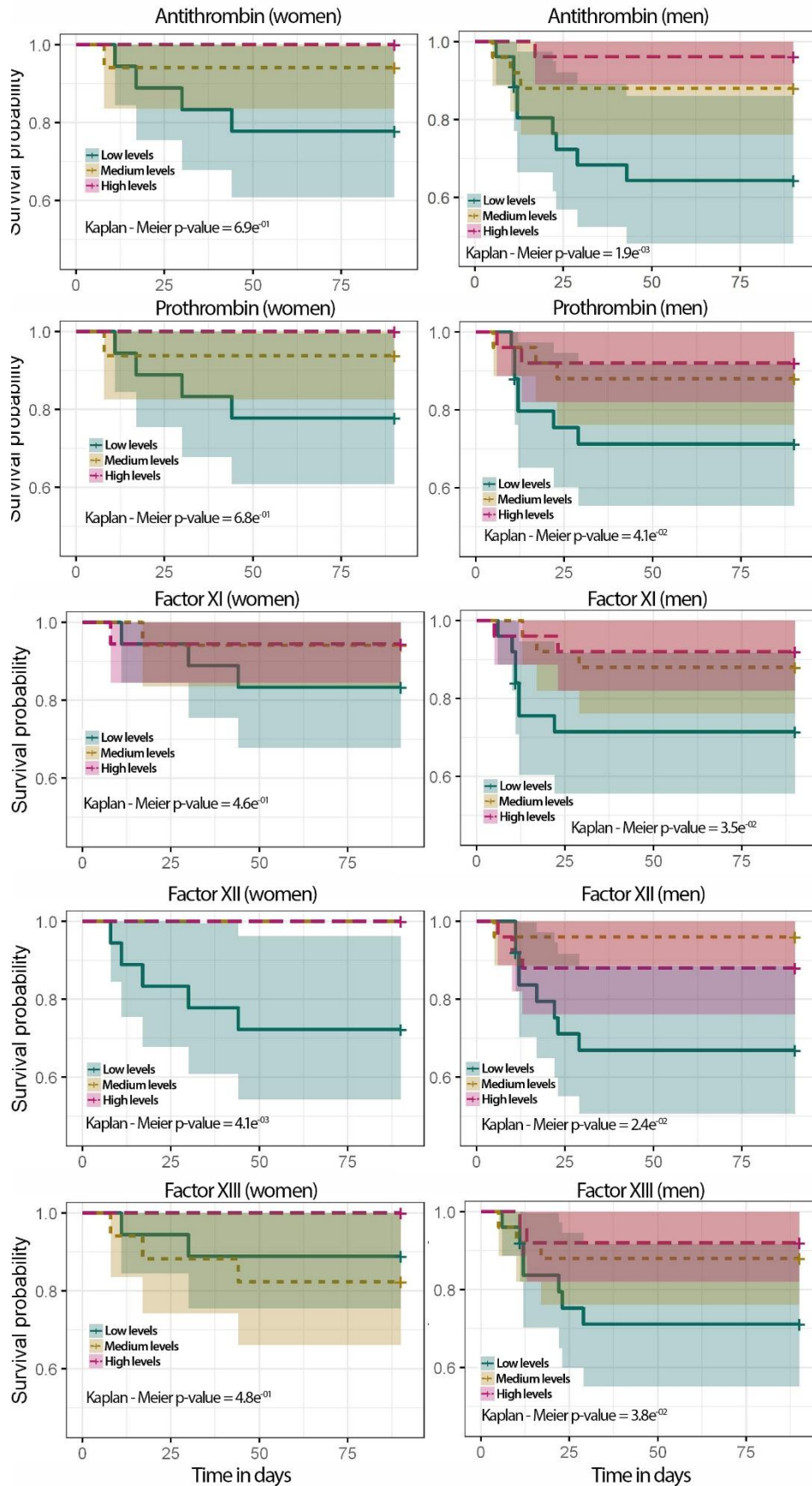
372 **Statistics:** Distributions were presented in box plots and significance was calculated by Kruskal-
373 Wallis test. APTT and INR levels did not show differences among the three groups of
374 COVID-19 (p-value = 0.237 and p-value = 0.071, respectively). **Abbreviations:** AM,
375 asymptomatic/mild patients; APTT, activated partial thromboplastin time; INR, international
376 normalized ratio.

377

378

379

380 **Supplementary Figure 4. Kaplan-Meier plots regarding coagulation protein levels and**
381 **grouped by sex.**



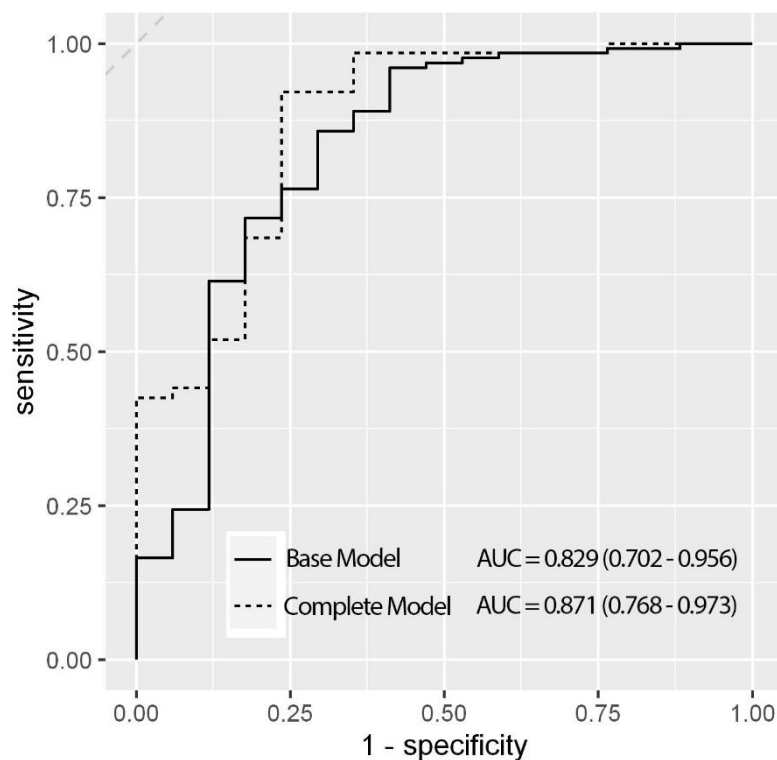
382

383

384 **Statistics:** Coagulation proteins' classes were obtained using 3 quantiles to get low (blue),
385 medium (yellow) and high (pink) factor levels. P-values of the Kaplan-Meier analysis are shown
386 in each plot. Men = 75, Women = 53.

387

388 **Supplementary Figure 5. Predictive accuracy of the model with coagulation proteins in**
389 **combination with epidemiological variables.**



390

391

392 **Statistics:** ROC curves and the Area Under the Curve (AUC) with its 95% CI in brackets. Base
393 model: mortality is modelled according to age and sex covariables. Complete Model: all five
394 coagulation protein levels were included (antithrombin, prothrombin, Factor XI, Factor XII,
395 Factor XIII) to the base model. No significant differences were found between models.

396