

1 **Thromboembolism risk is higher among patients with diabetes and COVID-19 and is**
2 **associated to poor clinical outcome.**

3 Stefania L Calvisi^{1§}; Giuseppe A Ramirez^{2,3§}; Marina Scavini⁴; Valentina Da Prat¹; Giuseppe
4 Di Lucca¹; Andrea Laurenzi^{4,5}; Gabriele Gallina^{1,3}; Ludovica Cavallo^{1,3}; Giorgia Borio^{1,3};
5 Federica Farolfi^{1,3}; Maria Pascali^{1,3}; Jacopo Castellani^{1,3}; Vito Lampasona⁴; Armando
6 D'Angelo^{3,6}; Giovanni Landoni^{3,7}; Fabio Ciceri^{3,7}; Patrizia Rovere Querini^{3,5}; Moreno
7 Tresoldi^{1*}; Lorenzo Piemonti^{3,4*}

8
9 ¹ Unit of General Medicine and Advanced Care, IRCCS Ospedale San Raffaele, Milan, Italy

10 ² Unit of Immunology, Rheumatology, Allergy and Rare Diseases, IRCCS San Raffaele
11 Scientific Institute, Milan, Italy

12 ³ Università Vita-Salute San Raffaele, Milan, Italy

13 ⁴ Diabetes Research Institute, IRCCS Ospedale San Raffaele, Milan, Italy.

14 ⁵ Unit of Internal Medicine and Endocrinology, IRCCS Ospedale San Raffaele, Milan, Italy

15 ⁶ Coagulation service and Thrombosis Research Unit, IRCCS Ospedale San Raffaele, Milan,
16 Italy

17 ⁷ Department of Anesthesia and Intensive Care, IRCCS San Raffaele Scientific Institute,
18 Milan, Italy

19 ⁸ Hematology and Bone Marrow Transplantation Unit, IRCCS Ospedale San Raffaele, Milan,
20 Italy.

21
22 § SLC and GAR equally contributed to this work ; * MT and LP equally contributed to this
23 work

24
25 **ORCID**

26 0000-0002-9685-4582: SL Calvisi; 0000-0002-2889-366X: GA Ramirez; 0000-0002-7983-
27 6905: M Scavini; 0000-0001-8783-1904: V Da Prat; 0000-0001-5162-8445: V Lampasona;
28 0000-0002-9857-4509: A D'Angelo; 0000-0002-8594-5980: G Landoni; 0000-0003-2615-
29 3649: P Rovere-Querini; 0000-0003-0873-0123: F Ciceri; 0000-0003-1541-6650: M Tresoldi
30

31 **Short title:** Thromboembolism, diabetes and COVID-19 pneumonia

32
33 **Keywords:** COVID-19, diabetes, clinical outcome, humoral response, SARS-CoV-2,
34 Thromboembolism.

35
36 **Correspondence to:** Lorenzo Piemonti, Diabetes Research Institute, San Raffaele Scientific
37 Institute, Via Olgettina 60, 20132 Milan, Italy. Tel: 39 02 26432706, Fax: 39 02 26432871, E-
38 mail: piemonti.lorenzo@hsr.it

39
40 Word count: abstract: 249; text: 3,944;

41 Table: 2

42 Figure: 2

43
44 **Declaration of interests.** The authors have no conflict of interest to disclose in relation to the
45 topic of this manuscript. This work was funded by Program Project COVID-19 OSR-UniSR
46 and Ministero della Salute (COVID-2020-12371617).

47

48 **ABSTRACT**

49 **Purpose.** Individuals with diabetes carry an increased risk for adverse clinical outcome in
50 case of SARS-CoV-2 infection. The purpose of this study was to evaluate whether this risk is,
51 at least in part, modulated by an increase of thromboembolic complications.

52 **Methods.** We prospectively followed 169 hospitalized patients with confirmed COVID-19
53 pneumonia admitted to the Internal Medicine Units of San Raffaele Hospital. We analysed
54 inflammation and tissue damage biomarkers, hemostatic parameters, thrombotic events and
55 clinical outcome according to the presence of hyperglycaemia or diagnosed diabetes.

56 **Results.** Among 169 patients, 51 (30.2%) had diabetes. Diabetes and hyperglycemia were
57 associated with increased inflammation and tissue damage circulating markers, higher D-
58 dimer levels, increased prothrombin time and lower antithrombin III activity. Forty-eight
59 venous and 10 arterial thrombotic events were identified in 49 (29%) patients. Diabetes (HR
60 2.71, $p=0.001$), fasting blood glucose (HR 4.32, $p<0.001$), glucose variability (HR 1.6, $p <$
61 0.009), presence of antiphospholipid antibodies (HR 4.18, $p=0.033$) and the positivity for
62 virus spike protein antibodies (RBD IgG, HR 3.93, $p=0.006$; S1/S2 IgG, HR 3.36, $p=0.027$
63 and RBD IgA, HR 4.98, $p=0.001$) were all associated with an increased risk of
64 thromboembolic complication. Thromboembolic complications significantly increased the
65 risk for an adverse clinical outcome only in the presence of diabetes (HR 3.05, $p=0.01$) or
66 hyperglycaemia (HR 3.07, $p=0.015$).

67 **Conclusions.** Thromboembolism risk is higher among patients with diabetes and COVID-19
68 pneumonia and is associated to poor clinical outcome. In case of SARS-Cov-2 infection
69 patients with diabetes could be considered for a more intensive prophylactic anticoagulation
70 regimen.

71 **INTRODUCTION**

72 Diabetes has been confirmed as one of the most consistent risk factors for severe disease in
73 case of SARS-CoV-2 infection (1,2). In fact, the risk of admission to an Intensive Care Unit
74 (ICU) and of in-hospital mortality are increased two to three fold by the presence of diabetes
75 in patients with COVID 19 pneumonia (3). Different pathophysiological mechanisms were
76 suggested to explain the worse clinical outcome, including hyperglycemia, older age and the
77 presence of comorbidities (i.e., hypertension, obesity, and cardiovascular disease) (4).
78 However, because of the syndromic nature of diabetes, additional potential causative factors
79 should be considered, such as the increased susceptibility to hyperinflammation (5), the
80 diminished immunological function (6) and the prothrombotic state (7) associated with
81 hyperglycemia. We recently investigated whether diabetes or hyperglycemia are linked to a
82 defect in the humoral immune response against SARS-CoV-2 (8,9). Our data showed that the
83 antibody response against multiple SARS-CoV-2 antigens in patients with diabetes is
84 superimposable in terms of timing, persistence, classes, titers, and neutralizing activity to that
85 of non-diabetic patients (9,10). However, in our cohort of patients with SARS-CoV-2
86 pneumonia, we also observed a significant correlation between serum D-dimer levels and
87 diabetes/glycemia, a finding confirmed also by others (11-13). Elevated D-dimer levels are a
88 direct consequence of increased fibrin formation and lysis and thus an indicator of increased
89 thrombotic activity, such as disseminated intravascular coagulation (DIC) and
90 thromboembolism (14). COVID-19 is associated with an increased risk of arterial and venous
91 thrombosis (15-17) because of a multitude of factors, including systemic inflammation,
92 endothelial dysfunction, platelet activation, immobilization, mechanical ventilation and the
93 use of central venous catheters (18-20). Since diabetes is associated with a pro-thrombotic
94 status (7) and elevated D-dimer levels (12), we hypothesized that diabetes is associated with
95 an increased risk of thrombotic events in patients with COVID-19 pneumonia. To prove this
96 hypothesis we designed a prospective observational study in a cohort of 169 consecutively

97 hospitalized patients with COVID-19 pneumonia, focusing on thrombotic events which
98 occurred during hospitalization and risk factors associated with these events.

99

100 **MATERIAL AND METHODS**

101 **Study population and data sources.** The study population consisted of 180 adult patients
102 (≥ 18 years) with confirmed COVID-19 pneumonia admitted to the Internal Medicine Units of
103 San Raffaele Hospital, Milan, Italy from March 2nd to May 7th 2020. This series of patients is
104 part of the COVID-19 institutional clinical–biological cohort, assessing patients with COVID-
105 19 at our institution, a 1,350 bed tertiary care hospital in Milan, Italy (COVID-BioB;
106 ClinicalTrials.gov Identifier: NCT04318366). A confirmed infection case was defined as a
107 SARS-CoV-2-positive RT-PCR test from a nasal/throat swab, and/or signs, symptoms and
108 radiological findings suggestive of COVID-19 pneumonia. There were no exclusion criteria.
109 Within 48 hours from admission, we recorded demographic information, clinical features and
110 laboratory exams on the day of admission on a dedicated data collection form. Data were
111 recorded until hospital discharge or death, whichever occurred first. Data were cross-checked
112 in blind and verified by data managers and clinicians for accuracy. We also recorded mortality
113 beyond hospital discharge clinic: for patients non attending our dedicated outpatient follow-
114 up clinic, we checked patient’s vital status with either family members or family physician.
115 The study was approved by the local Institutional Review Board (protocol n 34/int/2020;
116 NCT04318366). Patients signed a written informed consent granting permission to access
117 their sensitive data for the purposes of this study.

118 **Thrombotic complications.** The occurrence of any thrombotic complication (TC) throughout
119 the hospitalization was the primary outcome of the study. Thrombotic complications included
120 deep vein thrombosis (DVT), pulmonary embolism (PE), and lower and upper limb ischemia,
121 catheter-related thrombosis with deep vein involvement, mesenteric ischemia, stroke and
122 myocardial infarction. A standard protocol to assess patients for thrombotic complications

123 was implemented based on the position paper from the Italian Society on Thrombosis and
124 Haemostasis (SISST) (21) and to the interim guidance to recognition and management of
125 coagulopathy in COVID-19 from the International Society on Thrombosis and Hemostasis
126 (ISTH) (22). A close control of hemostasis parameters and clinical signs and symptoms was
127 methodically pursued. Additional investigations, including CT scan and/or ultrasound, were
128 performed on the basis of clinical suspicion of thromboembolic events: (i) elevated D-dimer
129 levels and/or (ii) presence of respiratory failure and/or (iii) presence of symptoms suggestive
130 of thrombotic events. All patients received thromboprophylaxis with enoxaparin 4,000 IU/day
131 [adjusted to 6,000 IU/day or 3,000 IU/day in overweight (>100 kg) or underweight (<50kg)
132 subjects, respectively] or, alternatively, with mechanical compression of the lower limbs in
133 case of anticoagulant contraindications (active bleeding and platelet count less than $25 \times$
134 $10^9/l$). If chronic oral anticoagulant therapy with direct oral anticoagulants (DOACs) or
135 warfarin/acenocoumarol (OAT) was prescribed prior to admission, it was changed to LMWH
136 anticoagulant treatment. Thromboprophylaxis was administered on admission and during the
137 entire duration of the hospital stay. Anti-Xa measurement was used to monitor anticoagulant
138 treatment. There were no cases of heparin-induced thrombocytopenia. No major
139 haemorrhagic event occurred in patients with thromboprophylaxis. The Padua Prediction
140 Score and the IMPROVE Bleeding Risk Assessment Score were used at hospital admission
141 for stratification of the venous thromboembolism and bleeding risks, respectively. A Padua
142 score ≥ 4 identified patients at high risk for venous thromboembolism, an IMPROVE
143 Bleeding Risk Assessment Score ≥ 7 identified patients at increased risk of bleeding. Overt
144 DIC was defined when the ISTH diagnostic score was ≥ 5 (23).

145 **Definition of diabetes.** Study participants were defined as having diabetes if they had a
146 documented diagnosis before the hospital admission for COVID-19 pneumonia [Comorbid
147 diabetes: fasting plasma glucose (FPG) ≥ 7.0 mmol/l or HbA_{1c} $\geq 6.5\%$ (48 mmol/mol), or
148 prescription for diabetes medications] or if patients without a previous diagnosis of diabetes

149 had a mean FPG ≥ 7.0 mmol/l. during the hospitalization for COVID-19 pneumonia (newly
150 diagnosed diabetes). We computed mean FPG and glucose variability (standard deviation)
151 from all fasting laboratory glucose values measured during hospitalisation.

152 **Laboratory variables** Routine blood tests encompassed serum biochemistry [including renal
153 and liver function, lactate dehydrogenase (LDH) and electrolytes], complete blood count with
154 differential, markers of myocardial damage [troponin T and pro-brain natriuretic peptide
155 (proBNP)], and inflammation markers [C-reactive protein (CRP), ferritin, erythrocyte
156 sedimentation rate (ESR), interleukin-6 (IL-6)]. Specific antibodies to different SARS-CoV-2
157 antigens were tested in a subset of patients by a luciferase immunoprecipitation system (LIPS)
158 assay, as previously described (11). An extended coagulation profile assessment was
159 performed including D-dimer, PT, PTT, fibrinogen, antithrombin activity, vWF,
160 homocysteine, protein C and S. D-dimer levels were measured through a STA-R® automatic
161 coagulation analyser. Age-specific high D-dimer (aD-dimer) was defined as D-dimer levels
162 above $0.5 \mu\text{g}/\text{dl}$ for patients with less than 50 years of age and above their age divided by 100
163 in patients older than 50 years (24). Antiphospholipid antibodies including IgG and IgM
164 anticardiolipin (aCL), anti $\beta 2$ -glycoprotein (aB2GPI) and anti-phosphatidylserine/prothrombin
165 (aPSPT) antibodies were measured by using a Bioflash® automated chemiluminescent
166 analyser. Cut-off levels for aCL and aB2GPI was set to 20U/ml and to 30U/ml for aPSPT,
167 according to the manufacturer's instructions. Lupus anticoagulant (LA) was assessed via a
168 sensitive aPTT reagent (PTT-LA, Stago), mixing studies, and phospholipid addition to
169 platelet-free plasma in a kaolin clotting time system (OPTION2).

170 **Statistical analysis.** Continuous variables were presented as median with inter-quartile range
171 (IQR) in parenthesis. Categorical variables were reported as frequency or percent. Continuous
172 variables were compared using the Wilcoxon rank sum or Kruskal-Wallis test. Categorical
173 variables were compared using the Chi-square or Fischer's exact test, as appropriate.
174 Imputation for missing data was not performed. Associations between baseline variables and

175 diabetes was assessed by logistic regression. The effect estimates were reported as Odd Ratios
176 (ORs). Survival was estimated according to Kaplan–Meier. The time-to-event was calculated
177 from the date of symptom onset to the date of the event, or of last follow-up visit, whichever
178 occurred first. We calculated univariate and multivariate Cox proportional hazards models to
179 study the association between patient characteristics with time to thrombotic complication or
180 time to adverse outcome (as defined by composite endpoint of transfer to ICU or death,
181 whichever occurred first). In Cox proportional hazards models, the onset of a thrombotic
182 complication was considered a time-varying covariate. The effect estimates were reported as
183 Hazard Ratios (HRs) with the corresponding 95% CI, estimated according to the Wald
184 approximation. Multivariate analyses were performed including variables significant at the
185 level of <0.1 in the univariate analysis. Two-tailed P values are reported, with P value <0.05
186 indicating statistical significance. All confidence intervals are two-sided and not adjusted for
187 multiple testing. Statistical analyses were performed with the SPSS 24 (SPSS Inc. /IBM) and
188 the R software version 3.4.0 (R Core Team (2020)).

189

190 **RESULTS**

191 **Study participants.** A total of 180 consecutive patients with confirmed COVID-19 were
192 prospectively enrolled. Data from 11 out of 180 (6.11%) patients were considered incomplete
193 and excluded from the analysis. Among the 169 cases included in our study [median hospital
194 stay 17 (8-31) days], 61 patients (36.1%) were treated with non-invasive ventilation and 23
195 (13.6%) accessed an ICU over the hospitalization period. As of January 25, 2021 the median
196 follow-up time after symptoms onset was 222 (95% CI: 211-232) days. Thirty five patients
197 died during follow-up (20.7%). Fifty patients (29.6%) had an adverse in-hospital outcome,
198 according to the composite endpoint of transfer to ICU or death, whichever occurred first.

199 **Baseline characteristics of study population.** The characteristics of study participants,
200 according to diabetes status or glucose levels, are reported in Supplementary Table 1 and

201 Table 2 (25). Comorbid diabetes and newly diagnosed diabetes accounted for 11.2% ($n=19$)
202 and 18.9% ($n=32$) of the patients, respectively. Higher BMI [OR 1.112 (95% IC 1.03-1.2);
203 $p=0.007$], older age [OR 1.029 x year (95% IC 1.01-1.05); $p=0.013$], and hypertension [OR
204 4.036 (1.04-3.98); $p=0.037$] were all associated with diabetes. As for diabetes treatment, 3.9%
205 of subject with diabetes were being treated with lifestyle modifications, 11.8% with insulin,
206 39.2% with non-insulin oral or injectable anti-diabetes medications, 7.8% with insulin and
207 oral diabetes medications, while patients with newly diagnosed diabetes (37.3%) were
208 untreated. The median time from symptoms onset to hospital admission was 7 (1-12.5) and 5
209 (1-8) days for patients without and with diabetes, respectively ($p=0.33$). On admission,
210 18.3% ($n=31$) of the patients were taking ACE-inhibitors (25.5% vs 15.3%, $p=0.132$ diabetes
211 vs no diabetes), 14.2% ($n=24$) chronic antiplatelet therapy (21.6% vs 11%, $p=0.092$ diabetes
212 vs no diabetes) and 18.3% ($n=31$) anticoagulant treatments (23.5% vs 16.1%, $p=0.28$ diabetes
213 vs no diabetes).

214 **Hospital admission.** On admission signs of respiratory insufficiency were evident in most
215 patients [PaO₂/FiO₂ ratio 280 (200-368)] and a PaO₂/FiO₂ ratio <200 was present in 20%
216 and 29.4% of patients with or without diabetes, respectively ($p=0.31$). Diabetes was
217 associated with worse kidney function [serum creatinine: 96.4 (65.4-152) vs 82.2 (65.4-106)
218 $\mu\text{mol/L}$, $p=0.039$; urea nitrogen 18.6 (10.5-33.8) vs 11.9 (8.66-19.6) mmol/L, $p=0.004$],
219 increased inflammation [CRP 87.5 (35.7-184) vs 53.5 (17.9-112) mg/L; $p=0.009$] and tissue
220 damage markers [LDH 6.65 (4.33–8.8) vs 5.04 (3.82–8.8) $\mu\text{kat/L}$, $p=0.006$; AST 0.82 (0.64–
221 1.35) vs 0.6 (0.43–0.91) $\mu\text{kat/L}$, $p=0.006$; ALT 0.73 (0.45–0.97) vs 0.57 (0.33–0.83) $\mu\text{kat/L}$,
222 $p=0.077$; pro-BNP 738 (193-2238) vs 193 (59-910) ng/L, $p=0.011$; troponin T 19.5 (11.4-
223 61.55) vs 12.7 (6-42.6) $\mu\text{g/L}$, $p=0.078$]. The same changes were associated with
224 progressively higher blood glucose levels [Supplementary Table 2 (25)]. Data regarding the
225 IgG, IgM and IgA responses to the SARS-CoV-2 spike protein (RBD or S1+S2) and IgG to

226 NP (Table 1) were available for a subgroup of patients, as they were part of a previous cohort
227 evaluated for the humoral response in the presence of diabetes (12). Marginal differences
228 between patients with and without diabetes were evident, with the exception for a trend of
229 higher prevalence of IgA RBD positive subjects (68% vs 42.9%, $p=0.057$). Over the
230 hospitalization period antibiotic (80.4% vs 61.9%, $p=0.02$) and oxygen (84.3% vs 61%,
231 $p=0.004$) treatments were more frequently used in patients with diabetes while antiviral,
232 immunomodulatory and biologic therapies were equally prescribed.

233 **Hemostatic parameters.** Upon admission patients with diabetes exhibited significantly
234 higher D-dimer levels [11.8 (5.5-12.4) vs 4.2 (2.3-9.3) $\mu\text{g/ml}$, $p<0.001$] and increased
235 prothrombin time (PT-INR 1.16 (1.02-1.25 vs 1.04 (0.98-1.15), $p=0.001$) compared with
236 patients without diabetes (Table 1). Concordantly, the percentage of subject with elevated
237 age-specific D-dimer was significantly higher in the presence of diabetes (76.5% vs 56.8%,
238 $p=0.016$). Partial thromboplastin time, platelet count and fibrinogen were not affected by
239 diabetes. Advanced markers of thrombophilia were available for a subgroup of patients (Table
240 1). Exploratory analysis did not show significant changes in coagulation factors levels or
241 activity in subjects with diabetes, except for a lower antithrombin III activity [91% (80-120)
242 vs 100% (92-106)]. Antiphospholipid antibody (either positive LA and/or aCL, aB2GPI,
243 aPSPT IgG or IgM antibodies) were above the reference range in 8 out of 20 (40%) and 15
244 out of 45 (33.3%) patients with and without diabetes, respectively ($p=0.78$). Generally,
245 subjects positive for antiphospholipid antibody had lower antibody levels. The presence of
246 diabetes did not significantly increase the proportion of patients who at baseline had a higher
247 risk for venous thromboembolism based on the Padua score (Padua score ≥ 4 : 43.1% vs
248 31.4%, $p=0.16$), even if a marginal, although significant, difference in the Padua score was
249 evident [3 (3-5) vs 3 (1-5), $p=0.006$] (Table 1). Similarly, the proportion of patients at high
250 baseline bleeding risk based on the IMPROVE score was not affected by the presence of
251 diabetes (IMPROVE ≥ 7 : 9.8% vs 5.9%; $p= 0.35$), even if a marginal, although significant,

252 difference in the IMPROVE score was evident [2.2 (1.2-4.1) vs 1.6 (0.97-2.9), $p=0.024$]
253 (Table 1).

254 **Thromboembolic complications.** Forty eight venous and 10 arterial thrombotic events were
255 identified in 49 (29%) patients (Table 2). The median time from the onset of symptoms of
256 COVID-19 pneumonia to the thrombotic event was 17 (10-24) days. Patients with diabetes
257 developed more frequently a thromboembolic complication (47.1% vs 21.2%, $p=0.001$) than
258 patients without diabetes. Comorbid diabetes and newly diagnosed diabetes were both
259 associated with a higher prevalence of thromboembolic complication (52% vs 42.1%
260 respectively, $p=0.77$). Concordantly, the higher prevalence of thromboembolic complication
261 was associated with higher blood glucose levels during the hospitalization (Table 1).
262 Regarding the thrombosis site, venous events (in particular deep vein thrombosis) contributed
263 more significantly than arterial ones in determining the higher prevalence of thromboembolic
264 complications in patients with diabetes compared to those without diabetes. In patients with
265 and without diabetes, 3 and 1 (5.9% vs 0.8%, $p=0.083$) events were classified as overt DIC
266 (≥ 5 points, according to the ISTH diagnostic criteria), respectively. The results of a Cox
267 regression analysis for thromboembolic complications is presented in Fig. 1. The Cox
268 regression analysis adjusted for age and sex indicates that diabetes (HR 2.71, CI 1.53-4.8;
269 $p=0.001$), fasting plasma glucose [FPG mean (log1p) HR 4.32, CI 1.86-10, $p=0.001$] and
270 glucose variability [FPG standard deviation (log1p) HR 1.6, CI 1.13-2.28, $p=0.009$] were
271 associated with a higher risk of thromboembolic complications. Differences in smoke habit,
272 BMI, other comorbidities and preadmission antiplatelet or steroid were all statistically not
273 significant. A trend towards a protective effect of preadmission anticoagulant therapy was
274 evident (HR 0.45, CI 0.18-1.08; $p=0.075$). In a multivariate model, diabetes and preadmission
275 anticoagulant therapy confirmed their association with the thromboembolic complication.
276 Within the subgroup of patients for which data were available, positivity for antiphospholipid
277 antibodies (HR 4.18, CI 1.12-15.6, $p=0.033$) was associated with a higher risk of

278 thromboembolic complication. Unexpectedly, some humoral responses to the SARS-CoV-2
279 spike protein (RBD or S1+S2), but not to nucleoprotein (NP), were also associated with a
280 higher risk of thromboembolic complication: RBD IgG (HR 3.93, CI 1.48-10.4; p=0.006),
281 S1/S2 IgG (HR 3.36, CI 1.15-9.8; p=0.027) and RBD IgA (HR 4.98, CI 1.8-13.4; p=0.001).
282 The thrombosis-free survival curves according to the antibody positivity are reported in
283 Figure 1. Antibodies variables were not tested in a multivariate model since the availability of
284 antibody in only a fraction of patients would have led to an overfitting of the model.

285 **Thromboembolic complications and adverse clinical outcome in patients with and**
286 **without diabetes.** To assess whether the presence of thromboembolic complications had an
287 impact on patient outcome according to diabetes or glucose levels, we conducted a Kaplan-
288 Meier estimator log-rank test and a Cox proportional hazards model for adverse clinical
289 outcome (as defined by composite endpoint of transfer to ICU or death, whichever occurred
290 first) (Figure 2). The Cox regression analysis adjusted for age and *sex* indicated that diabetes
291 (HR 2.99, CI 1.7-5.03; p<0.001), fasting plasma glucose [FPG mean (log₁₀) HR 9.6, CI 4.59-
292 20; p<0.001] and glucose variability [FPG standard deviation (log₁₀) HR 2.02, CI 1.43-2.9;
293 p<0.001] were strongly associated with a higher risk of adverse clinical outcome (see also
294 Supplementary Table 2)(25). Thromboembolic complications were not associated with an
295 adverse clinical outcome in the absence of diabetes (HR 0.29, CI 0.04-2.16; p=0.225) or in the
296 presence of FBG <7 mmol/l (HR 0.54, CI 0.07-4.35; p=0.56), while they significantly
297 increased the risk in the presence of diabetes (HR 3.05, CI 1.31-7.09; p=0.01) or FBG ≥ 7
298 mmol/l (HR 3.07, CI 1.24-7.6; p=0.015).

299

300 **DISCUSSION**

301 There are few reports on the relationship between hyperglycemia and the rate of
302 thromboembolic complications in COVID-19 pneumonia and it is still unknown whether
303 thrombosis affects the prognosis of patients with COVID-19 pneumonia in the presence of

304 diabetes. Under the hypothesis of a relevant role for diabetes, we designed a prospective
305 observational study focusing on thrombotic events occurring during hospitalization and risk
306 factors associated with thromboembolic complications in patients with COVID-19
307 pneumonia. Our study generated several interesting findings in those patients. First, diabetes,
308 hyperglycemia and glycemic variability were strong risk factors for the development of
309 thromboembolic complications. Second, the rate of venous thrombosis events (in particular
310 deep vein thrombosis) was the most affected by the presence of diabetes or hyperglycemia.
311 Third, thromboembolic complications had an adverse impact on clinical outcome exclusively
312 in the presence of diabetes or hyperglycaemia. While reasonable, these results could not have
313 been taken for granted (26). Thromboembolic events have a higher incidence among patients
314 with COVID-19 (27-29) and diabetes is *per se* characterized by a pro-thrombotic status (7).
315 We and others have previously reported an increase of D-dimer in patients with diabetes and
316 COVID-19 pneumonia compared to those without diabetes (11-13). However the clinical
317 implications in term of thromboembolic risk of those findings were yet unclear. Moreover,
318 data on the correlation of thromboembolic complications with clinical outcome were limited
319 and contradictory, with some studies finding a higher risk of adverse outcome associated with
320 thromboembolic events in hospitalized patients with COVID-19 (30), while others did not
321 find any association (31). The pathophysiological mechanisms related to the increased risk of
322 thrombotic complications in patients with COVID-19 pneumonia and diabetes are still
323 incompletely understood. In our study, diabetes was associated with both inflammation and
324 coagulopathy (elevated C reactive protein and D-dimer levels, mild prolongation of the
325 prothrombin time and decreased antithrombin III), suggesting that an hyperglycaemia-related
326 amplification of the pathobiological mechanisms of immunothrombosis (32) could be
327 responsible of the increased thrombotic risk. The reduced activity of antithrombin III is of
328 particular interest in this context (33). In fact, antithrombin III is a powerful natural
329 anticoagulant which is regulated by inflammation (34). Therefore, it can be speculated that

330 hyperinflammation might have been triggering a decrease in antithrombin III levels and its
331 physiological anticoagulant activity. Furthermore, since the clinical anticoagulant efficacy of
332 heparin requires interaction with antithrombin III, an impaired levels/activity of antithrombin
333 III may be associated with “heparin resistance” (34). In agreement with this hypothesis, an
334 association between antithrombin III levels and mortality in patients with COVID-19
335 pneumonia has already been reported (35).

336 In addition to diabetes and hyperglycemia, our data show an association between
337 thromboembolic complications and the presence of antiphospholipid antibodies in patients
338 with COVID-19 pneumonia. This association has been previously reported in case reports,
339 case series, cohort studies, and cross-sectional studies, although with contradictory results
340 (36). Unfortunately, our data are insufficient to provide new insights. In fact, antiphospholipid
341 antibody measurements were available only for a subgroup of patients and, therefore, it was
342 impossible to include them in a multivariate model to test for their contribution to
343 thromboembolic risk. Moreover, antiphospholipid antibody positivity was generally weak and
344 obtained at just at single time point, with no subsequent confirmatory tests being available.
345 Finally, it is known that an intermittent lupus anticoagulant increase is associated with
346 inflammation and its assessment in this and other studies could be challenging in the presence
347 of the widespread use of low molecular weight heparin in such patients. Since the presence of
348 antiphospholipid antibodies is recognized as one of the most common causes of acquired
349 thrombophilia, its role in inducing thrombotic vascular events after SARS-CoV-2 infection
350 seems reasonable, definitively needs further studies (37). More intriguing, albeit within the
351 limits of the availability of data only in a subgroup of patients, is the association between
352 thromboembolic complications and the antibody response against the spike protein of SARS-
353 CoV-2. The IgA response against the receptor binding domain, which tended to be more
354 frequently associated with diabetes at admission, appeared to be the more strongly associated
355 with the risk of thrombotic complications. This evidence has never been described before and

356 is open to different interpretations. One hypothesis is that both antibody response and
357 thrombophilia are epiphenomena of the hyperinflammation associated with diabetes. In a
358 larger cohort of subjects, we previously reported marginal differences in the humoral response
359 against SARS-CoV-2 between patients with and without diabetes, including a higher
360 quantitative response of anti-RBD antibodies at weeks 2 and 3 after the onset of symptoms of
361 COVID-19 pneumonia (9). An early maturation of the antibody response might be favored by
362 the state of hyperinflammation present in patients with diabetes, in whom other authors have
363 described an increased percentage of proinflammatory memory B cells and a decreased
364 percentage of the anti-inflammatory B cell subset (38). A second hypothesis is that virus
365 specific antibodies may interfere with the interaction between spike protein and angiotensin-
366 converting enzyme 2 (ACE-2), and this may result in a prothrombotic phenotype during
367 COVID-19 pneumonia. ACE-2 is expressed on endothelial cells and both ACE-2 activation
368 and down-regulation were associated with the increased thrombotic risk in COVID-19
369 pneumonia (39). Antibodies responses against the spike protein could unbalance the ACE-2
370 regulation during SARS-CoV-2 acute infection. Some reports showed an inverse correlations
371 between spike protein antibody levels with disease severity (40), but whether this difference
372 was related to an increased rate of thromboembolic complications was not reported. Further
373 studies are warranted to understand whether in patients with diabetes an increased production
374 of antibodies against SARS-CoV-2 is partly responsible for the prothrombotic phenotype in
375 patients with diabetes, or if it is just the result of the severity of the disease.

376 Our study encompasses some limitations: first, our cohort was limited to hospitalized patients
377 and results could be different in less severe COVID-19 disease. Second, the definition of
378 newly diagnosed diabetes did not exclude stress-induced hyperglycemia and, as the study
379 included mainly patients with the characteristics of type 2 diabetes, we cannot generalize our
380 findings to other types of diabetes. Third, even if the overall venous and arterial
381 thromboembolism rate was similar to that described until now in various studies (18), our

382 monocentric cohort was relatively small, and, therefore, a selection bias cannot be excluded.
383 Fourth, we were unable to evaluate the specific role of some markers as predictors of
384 thrombosis in multivariate models since a complete set of biochemical coagulation data was
385 available only for a fraction of patients. Nevertheless our study generated additional valuable
386 knowledge about the role of diabetes in predicting thrombotic events and in stratifying their
387 prognostic significance. In conclusion, many evidences indicate that patients with diabetes, in
388 case of COVID-19 pneumonia, carry a significant increased risk for adverse clinical outcome
389 when compared with patients without diabetes. It is clear from our study that part of this risk
390 is due to an increase in thromboembolic complications. These findings suggest that in in case
391 of SARS-Cov-2 pneumonia, patients with diabetes could be considered for a more intensive
392 prophylactic anticoagulation regimen.

393 DATA AVAILABILITY. Some or all datasets generated during and/or analyzed during the
394 current study are not publicly available but are available from the corresponding author on
395 reasonable request.

396

397 **ACKNOWLEDGMENTS**

398 *This work was funded by Program Project COVID-19 OSR-UniSR and Ministero della Salute*
399 *(COVID-2020-12371617).*

400 *Declaration of interests.* The authors have no conflict of interest to disclose in relation to the
401 topic of this manuscript. The authors declare that there are no relationships or activities that
402 might bias, or be perceived to bias, their work.

403 *Individual contributions* LP, SLC and GAR contributed to the conception of the study, wrote
404 the manuscript, researched data and contributed to the discussion. MSc and VL contributed to
405 the acquisition and analysis of antibody data and revised the manuscript. VDP, GDL, AL,
406 PRQ and FC recruited patients, contributed to the acquisition of samples, managed the
407 biobanking activities and critically revised the manuscript, AD and GL contributed to the
408 acquisition, analysis and interpretation of data and critically revised the manuscript. MT
409 contributed to the design of the study and critically reviewed/edited the manuscript. LP is the
410 guarantor of this work and, as such, had full access to all the data presented in the study and
411 takes responsibility for the integrity of the data and the accuracy of the data analysis. The
412 final manuscript has been read and approved by all named authors.

413 **REFERENCES**

- 414 1. Huang C, Wang Y, Li X, Ren L, Zhao J, Hu Y, Zhang L, Fan G, Xu J, Gu X, Cheng
415 Z, Yu T, Xia J, Wei Y, Wu W, Xie X, Yin W, Li H, Liu M, Xiao Y, Gao H, Guo L,
416 Xie J, Wang G, Jiang R, Gao Z, Jin Q, Wang J, Cao B. Clinical features of patients
417 infected with 2019 novel coronavirus in Wuhan, China. *Lancet*. 2020;395(10223):497-
418 506.
- 419 2. Guan WJ, Ni ZY, Hu Y, Liang WH, Ou CQ, He JX, Liu L, Shan H, Lei CL, Hui DSC,
420 Du B, Li LJ, Zeng G, Yuen KY, Chen RC, Tang CL, Wang T, Chen PY, Xiang J, Li
421 SY, Wang JL, Liang ZJ, Peng YX, Wei L, Liu Y, Hu YH, Peng P, Wang JM, Liu JY,
422 Chen Z, Li G, Zheng ZJ, Qiu SQ, Luo J, Ye CJ, Zhu SY, Zhong NS. Clinical
423 Characteristics of Coronavirus Disease 2019 in China. *N Engl J Med*.
424 2020;382(18):1708-1720.
- 425 3. Mantovani A, Byrne CD, Zheng MH, Targher G. Diabetes as a risk factor for greater
426 COVID-19 severity and in-hospital death: A meta-analysis of observational studies.
427 *Nutr Metab Cardiovasc Dis*. 2020.
- 428 4. Apicella M, Campopiano MC, Mantuano M, Mazoni L, Coppelli A, Del Prato S.
429 COVID-19 in people with diabetes: understanding the reasons for worse outcomes.
430 *Lancet Diabetes Endocrinol*. 2020.
- 431 5. Guo W, Li M, Dong Y, Zhou H, Zhang Z, Tian C, Qin R, Wang H, Shen Y, Du K,
432 Zhao L, Fan H, Luo S, Hu D. Diabetes is a risk factor for the progression and
433 prognosis of COVID-19. *Diabetes Metab Res Rev*. 2020:e3319.
- 434 6. Geerlings SE, Hoepelman AI. Immune dysfunction in patients with diabetes mellitus
435 (DM). *FEMS Immunol Med Microbiol*. 1999;26(3-4):259-265.
- 436 7. Vazzana N, Ranalli P, Cuccurullo C, Davi G. Diabetes mellitus and thrombosis.
437 *Thromb Res*. 2012;129(3):371-377.

- 438 8. Secchi M, Bazzigaluppi E, Brigatti C, Marzinotto I, Tresoldi C, Rovere-Querini P,
439 Poli A, Castagna A, Scarlatti G, Zangrillo A, Ciceri F, Piemonti L, Lampasona V.
440 COVID-19 survival associates with the immunoglobulin response to the SARS-CoV-2
441 spike receptor binding domain. *J Clin Invest.* 2020.
- 442 9. Lampasona V, Secchi M, Scavini M, Bazzigaluppi E, Brigatti C, Marzinotto I, Davalli
443 A, Caretto A, Laurenzi A, Martinenghi S, Molinari C, Vitali G, Di Filippo L, Mercalli
444 A, Melzi R, Tresoldi C, Rovere-Querini P, Landoni G, Ciceri F, Bosi E, Piemonti L.
445 Antibody response to multiple antigens of SARS-CoV-2 in patients with diabetes: an
446 observational cohort study. *Diabetologia.* 2020;63(12):2548-2558.
- 447 10. Dispinseri S, Lampasona V, Secchi M, Cara A, Bazzigaluppi E, Negri D, Brigatti C,
448 Pirillo MF, Marzinotto I, Borghi M, Rovere-Querini P, Tresoldi C, Ciceri F, Scavini
449 M, Scarlatti G, Piemonti L. Robust neutralizing antibodies to SARS-CoV-2 develop
450 and persist in subjects with diabetes and COVID-19 pneumonia. *J Clin Endocrinol*
451 *Metab.* 2021.
- 452 11. Yan Y, Yang Y, Wang F, Ren H, Zhang S, Shi X, Yu X, Dong K. Clinical
453 characteristics and outcomes of patients with severe covid-19 with diabetes. *BMJ*
454 *Open Diabetes Res Care.* 2020;8(1).
- 455 12. Mishra Y, Pathak BK, Mohakuda SS, Tilak T, Sen S, P H, Singh R, Singh AR.
456 Relation of D-dimer levels of COVID-19 patients with diabetes mellitus. *Diabetes*
457 *Metab Syndr.* 2020;14(6):1927-1930.
- 458 13. Sardu C, D'Onofrio N, Balestrieri ML, Barbieri M, Rizzo MR, Messina V, Maggi P,
459 Coppola N, Paolisso G, Marfella R. Outcomes in Patients With Hyperglycemia
460 Affected by COVID-19: Can We Do More on Glycemic Control? *Diabetes Care.*
461 2020;43(7):1408-1415.

- 462 14. Soomro AY, Guerchicoff A, Nichols DJ, Suleman J, Dangas GD. The current role and
463 future prospects of D-dimer biomarker. *Eur Heart J Cardiovasc Pharmacother.*
464 2016;2(3):175-184.
- 465 15. Malas MB, Naazie IN, Elsayed N, Mathlouthi A, Marmor R, Clary B.
466 Thromboembolism risk of COVID-19 is high and associated with a higher risk of
467 mortality: A systematic review and meta-analysis. *EClinicalMedicine.*
468 2020;29:100639.
- 469 16. Wang C, Zhang H, Zhou M, Cheng Y, Ye L, Chen J, Wang M, Feng Z. Prognosis of
470 COVID-19 in patients with vein thrombosis: a systematic review and meta-analysis.
471 *Eur Rev Med Pharmacol Sci.* 2020;24(19):10279-10285.
- 472 17. Tang N, Li D, Wang X, Sun Z. Abnormal coagulation parameters are associated with
473 poor prognosis in patients with novel coronavirus pneumonia. *J Thromb Haemost.*
474 2020;18(4):844-847.
- 475 18. Connors JM, Levy JH. Thromboinflammation and the hypercoagulability of COVID-
476 19. *J Thromb Haemost.* 2020.
- 477 19. Bozzani A, Arici V, Tavazzi G, Franciscone MM, Danesino V, Rota M, Rossini R,
478 Sterpetti AV, Ticozzelli G, Rumi E, Mojoli F, Bruno R, Ragni F. Acute arterial and
479 deep venous thromboembolism in COVID-19 patients: Risk factors and personalized
480 therapy. *Surgery.* 2020;168(6):987-992.
- 481 20. Gu SX, Tyagi T, Jain K, Gu VW, Lee SH, Hwa JM, Kwan JM, Krause DS, Lee AI,
482 Halene S, Martin KA, Chun HJ, Hwa J. Thrombocytopenia and endotheliopathy:
483 crucial contributors to COVID-19 thromboinflammation. *Nat Rev Cardiol.* 2020.
- 484 21. Marietta M, Ageno W, Artoni A, De Candia E, Gresele P, Marchetti M, Marcucci R,
485 Tripodi A. COVID-19 and haemostasis: a position paper from Italian Society on
486 Thrombosis and Haemostasis (SISST). *Blood Transfus.* 2020;18(3):167-169.

- 487 22. Thachil J, Tang N, Gando S, Falanga A, Cattaneo M, Levi M, Clark C, Iba T. ISTH
488 interim guidance on recognition and management of coagulopathy in COVID-19. *J*
489 *Thromb Haemost.* 2020;18(5):1023-1026.
- 490 23. Taylor FB, Jr., Toh CH, Hoots WK, Wada H, Levi M. Towards definition, clinical and
491 laboratory criteria, and a scoring system for disseminated intravascular coagulation.
492 *Thromb Haemost.* 2001;86(5):1327-1330.
- 493 24. Righini M, Van Es J, Den Exter PL, Roy PM, Verschuren F, Ghuysen A, Rutschmann
494 OT, Sanchez O, Jaffrelot M, Trinh-Duc A, Le Gall C, Moustafa F, Principe A, Van
495 Houten AA, Ten Wolde M, Douma RA, Hazelaar G, Erkens PM, Van Kralingen KW,
496 Grootenboers MJ, Durian MF, Cheung YW, Meyer G, Bounameaux H, Huisman MV,
497 Kamphuisen PW, Le Gal G. Age-adjusted D-dimer cutoff levels to rule out pulmonary
498 embolism: the ADJUST-PE study. *Jama.* 2014;311(11):1117-1124.
- 499 25. Stefania L C, Giuseppe A. R, Marina S, Valentina DP, Giuseppe DL, Andrea L,
500 Gabriele G, Ludovica C, Giorgia B, Federica F, Maria P, Jacopo C, Vito L, Armando
501 DA, Giovanni L, Fabio C, Patrizia R-Q, Moreno T, Lorenzo P. Data from:
502 Thromboembolism risk is higher among patients with diabetes and COVID-19
503 pneumonia and is associated to poor clinical outcome: an observational cohort study.
504 Deposited 7 April 2021. 10.6084/m9.figshare.14381777.v2,
505 [https://figshare.com/articles/online_resource/Thromboembolism_risk_is_higher_amon](https://figshare.com/articles/online_resource/Thromboembolism_risk_is_higher_among_patients_with_diabetes_and_COVID-19_pneumonia_and_is_associated_to_poor_clinical_outcome_an_observational_cohort_study/14381777)
506 [g_patients_with_diabetes_and_COVID-](https://figshare.com/articles/online_resource/Thromboembolism_risk_is_higher_among_patients_with_diabetes_and_COVID-19_pneumonia_and_is_associated_to_poor_clinical_outcome_an_observational_cohort_study/14381777)
507 [19_pneumonia_and_is_associated_to_poor_clinical_outcome_an_observational_cohor](https://figshare.com/articles/online_resource/Thromboembolism_risk_is_higher_among_patients_with_diabetes_and_COVID-19_pneumonia_and_is_associated_to_poor_clinical_outcome_an_observational_cohort_study/14381777)
508 [t_study/14381777.](https://figshare.com/articles/online_resource/Thromboembolism_risk_is_higher_among_patients_with_diabetes_and_COVID-19_pneumonia_and_is_associated_to_poor_clinical_outcome_an_observational_cohort_study/14381777)
- 509 26. Wijaya I, Andhika R, Huang I. Hypercoagulable state in COVID-19 with diabetes
510 mellitus and obesity: Is therapeutic-dose or higher-dose anticoagulant
511 thromboprophylaxis necessary? *Diabetes Metab Syndr.* 2020;14(5):1241-1242.

- 512 27. Lodigiani C, Iapichino G, Carenzo L, Cecconi M, Ferrazzi P, Sebastian T, Kucher N,
513 Studt JD, Sacco C, Bertuzzi A, Sandri MT, Barco S. Venous and arterial
514 thromboembolic complications in COVID-19 patients admitted to an academic
515 hospital in Milan, Italy. *Thromb Res.* 2020;191:9-14.
- 516 28. Helms J, Tacquard C, Severac F, Leonard-Lorant I, Ohana M, Delabranche X, Merdji
517 H, Clere-Jehl R, Schenck M, Fagot Gandet F, Fafi-Kremer S, Castelain V, Schneider
518 F, Grunebaum L, Angles-Cano E, Sattler L, Mertes PM, Meziani F. High risk of
519 thrombosis in patients with severe SARS-CoV-2 infection: a multicenter prospective
520 cohort study. *Intensive Care Med.* 2020;46(6):1089-1098.
- 521 29. Ali MAM, Spinler SA. COVID-19 and thrombosis: From bench to bedside. *Trends*
522 *Cardiovasc Med.* 2020.
- 523 30. Zhang L, Feng X, Zhang D, Jiang C, Mei H, Wang J, Zhang C, Li H, Xia X, Kong S,
524 Liao J, Jia H, Pang X, Song Y, Tian Y, Wang B, Wu C, Yuan H, Zhang Y, Li Y, Sun
525 W, Zhu S, Wang S, Xie Y, Ge S, Hu Y, Xie M. Deep Vein Thrombosis in
526 Hospitalized Patients With COVID-19 in Wuhan, China: Prevalence, Risk Factors,
527 and Outcome. *Circulation.* 2020;142(2):114-128.
- 528 31. Hippensteel JA, Burnham EL, Jolley SE. Prevalence of venous thromboembolism in
529 critically ill patients with COVID-19. *Br J Haematol.* 2020;190(3):e134-e137.
- 530 32. Loo J, Spittle DA, Newnham M. COVID-19, immunothrombosis and venous
531 thromboembolism: biological mechanisms. *Thorax.* 2021.
- 532 33. Mir N, D'Amico A, Dasher J, Tolwani A, Valentine V. Understanding the andromeda
533 strain - The role of cytokine release, coagulopathy and antithrombin III in SARS-
534 CoV2 critical illness. *Blood Rev.* 2020:100731.
- 535 34. Levy JH, Sniecinski RM, Welsby IJ, Levi M. Antithrombin: anti-inflammatory
536 properties and clinical applications. *Thromb Haemost.* 2016;115(4):712-728.

- 537 35. Gazzaruso C, Paolozzi E, Valenti C, Brocchetta M, Naldani D, Grignani C, Salvucci
538 F, Marino F, Coppola A, Gallotti P. Association between antithrombin and mortality
539 in patients with COVID-19. A possible link with obesity. *Nutr Metab Cardiovasc Dis.*
540 2020;30(11):1914-1919.
- 541 36. El Hasbani G, Taher AT, Jawad A, Uthman I. COVID-19, Antiphospholipid
542 Antibodies, and Catastrophic Antiphospholipid Syndrome: A Possible Association?
543 *Clin Med Insights Arthritis Musculoskelet Disord.* 2020;13:1179544120978667.
- 544 37. Zuo Y, Estes SK, Ali RA, Gandhi AA, Yalavarthi S, Shi H, Sule G, Gockman K,
545 Madison JA, Zuo M, Yadav V, Wang J, Woodard W, Lezak SP, Lugogo NL, Smith
546 SA, Morrissey JH, Kanthi Y, Knight JS. Prothrombotic autoantibodies in serum from
547 patients hospitalized with COVID-19. *Sci Transl Med.* 2020;12(570).
- 548 38. DeFuria J, Belkina AC, Jagannathan-Bogdan M, Snyder-Cappione J, Carr JD,
549 Nersesova YR, Markham D, Strissel KJ, Watkins AA, Zhu M, Allen J, Bouchard J,
550 Toraldo G, Jasuja R, Obin MS, McDonnell ME, Apovian C, Denis GV, Nikolajczyk
551 BS. B cells promote inflammation in obesity and type 2 diabetes through regulation of
552 T-cell function and an inflammatory cytokine profile. *Proc Natl Acad Sci U S A.*
553 2013;110(13):5133-5138.
- 554 39. Lupi L, Adamo M, Inciardi RM, Metra M. ACE2 down-regulation may contribute to
555 the increased thrombotic risk in COVID-19. *European Heart Journal.*
556 2020;41(33):3200-3200.
- 557 40. Imai K, Kitagawa Y, Tabata S, Kubota K, Nagura-Ikeda M, Matsuoka M, Miyoshi K,
558 Sakai J, Ishibashi N, Tarumoto N, Takeuchi S, Ito T, Maesaki S, Tamura K, Maeda T.
559 Antibody response patterns in COVID-19 patients with different levels of disease
560 severity—Japan. *medRxiv.* 2020:2020.2011.2020.20231696.

561
562

564 **FIGURE LEGEND**

565 **Figure 1. Thromboembolic complications in patients with COVID-19.** The forest plots
566 (panel a) show the Hazard Ratios (HR) for thrombosis for each factor tested. Upper panel:
567 univariate Cox regression analysis adjusted for sex and age. Lower panel: multivariate Cox
568 regression analysis adjusted for sex and age including variables significant at the level of <0.1
569 in the univariate analysis. Dots represent the HR, lines represent 95% confidence interval
570 (CI), and solid dots indicate $P < 0.05$. (*) indicates that the analysis was performed in a
571 subgroup of patients: antiphospholipid antibody, 75 out of 169 (44.4%); RBG (IgG, IgA, and
572 IgM), 93 out of 169 (55%); S1+S2 (IgG, IgA, and IgM), 93 out of 169 (55%); NP (IgG), 93
573 out of 169 (55%). Kaplan-Meier thrombosis-free survival estimates for patients with COVID-
574 19 pneumonia (panel b). Survival rate was estimated for the presence of diabetes or antibody
575 positivity. The log-rank test was used to test differences in the estimated survival rate. Crosses
576 indicate censored patients (censoring for death end of follow-up data).

577

578 **Figure 2. Survival in the absence of adverse clinical outcome in patients with COVID-19**
579 **with or without thrombotic events, according to diabetes or hyperglycemia.** Kaplan-
580 Meier patient survival estimates for 169 patients with COVID-19 pneumonia (panel a).
581 Survival rate in the absence of adverse clinical outcome (defined by composite endpoint of
582 transfer to ICU or death, whichever occurred first) was estimated for the presence of any
583 thrombotic event separately according to diabetes or fasting plasma glucose. The log-rank test
584 was used to test differences in the estimated survival rate between groups. Crosses indicate
585 censored patients (censoring for death or end of follow-up data). The forest plots (panel b)
586 show the hazard ratios for survival in the absence of adverse clinical outcome according to
587 presence/absence of diabetes, or to fasting plasma glucose level (FBG) categories. The
588 presence of thrombotic complications was considered as a time-varying covariate in Cox
589 proportional hazards models. The effect estimates were reported as Hazard Ratios (HRs) with

590 the corresponding 95% CI, estimated according to the Wald approximation. Cox regression
591 analysis was adjusted for sex and age. Dots represent the HR, lines represent 95% confidence
592 interval (CI), and solid dots indicate $P < 0.05$.

Table 1. Hemostatic parameters, inflammation markers and SARS-Cov2 antibodies according to diabetes and median fasting plasma glucose

Characteristics	All	Diabetes		p	Median fasting glucose (mmol/l)			p	Missing
		No	Yes		<5.6	5.6-6.9	≥ 7		
N		118	51		90	37	42		
Platelets (x10 ⁹ /L)	225 (153-307)	230 (157-309)	212 (151-301)	0.61	229 (157-379)	200 (160-321)	225 (146-324)	0.90	1
D-dimer (µg/ml)	5.9 (2.8-16.6)	4.2 (2.3-9.3)	11.8 (5.5-12.4)	<0.001	4.16 (2.3-9)	5.75 (2.35-11.4)	15.1 (6-35.6)	<0.001	10
Elevated aD-dimer [N (%)]	106 (62.7)	67 (56.8)	39 (76.5)	0.016	51 (56.7)	21 (56.8)	34 (81)	0.019	0
PT-INR	1.06 (0.99-1.2)	1.04 (0.98-1.15)	1.16 (1.02-1.25)	0.001	1.04 (0.98-1.17)	1.06 (0.97-1.16)	1.17 (1.04-1.27)	0.005	4
PTT-R	0.99 (0.94-1.05)	1 (0.95—1.05)	0.98 (0.91-1.06)	0.52	0.99 (0.94-1.05)	1.01 (0.95-1.1)	0.97 (0.9-1.06)	0.27	4
Fibrinogen (g/L)	5.53 (4.19-6.39)	5.46 (4.16-6.19)	5.65 (4.18-7.34)	0.24	5.11 (3.89-5.85)	5.87 (5.57-6.59)	5.75 (4.78-7.46)	0.004	42
von Willebrand factor (%)	307 (190-379)	306 (212-377)	336 (165-420)	0.92	307 (191-376)	301 (176-372)	358 (184-420)	0.49	101
Protein C (%)	86 (72-106)	86 (77-103)	73.5 (53-111)	0.24	87 (76-104)	82.5 (72-93)	78.5 (53-111)	0.59	96
Protein S (%)	78 (60-98)	82 (60-98)	68 (56-94)	0.36	84 (61.5-101.5)	78.5 (59-94.5)	68 (63-88.5)	0.56	98
Antithrombin III (%)	98 (88-106)	100 (92-106)	91 (80-102)	0.041	100 (88.25-105)	98 (93-109)	89 (79-104)	0.23	95
Homocysteine (µmol/L)	14.8 (10.1-19.4)	14.4 (10-18.4)	16.5 (12.3-23.5)	0.17	13.4 (10-16)	19.4 (10-24)	15.4 (9.9-21.7)	0.140	102
IgG β2-glycoprotein 1 [N (%)]	2 (3)	0 (0)	2 (11.8)	0.063	0 (0)	0 (0)	2 (13.3)	0.030	103
IgM β2-glycoprotein 1 [N (%)]	1 (1.5)	0 (0)	1 (5.6)	0.27	0 (0)	0 (0)	1 (6.7)	0.17	102
IgG cardiolipin [N (%)]	5 (7.5)	3 (6)	2 (11.8)	0.59	2 (5.3)	1 (7.1)	2 (13.3)	0.60	104
IgM cardiolipin [N (%)]	4 (6.1)	1 (2.1)	3 (16.7)	0.059	1 (2.7)	0 (0)	3 (20)	0.034	103
IgG phosphatidylserine [N (%)]	8 (12.5)	5 (11.4)	3 (15)	0.7	3 (9.1)	2 (14.3)	3 (17.6)	0.67	105
IgM phosphatidylserine [N (%)]	15 (22.7)	9 (19.6)	6 (30)	0.36	7 (20)	2 (14.3)	6 (35.3)	0.32	103
Antiphospholipid antibody [N (%)]	23 (35.4%)	15 (33.3)	8 (40)	0.779	11 (32.4)	4 (28.6)	8 (47.1)	0.49	104
LA [N (%)]	7 (9.6)	4 (7.5)	3 (15)	0.38	4 (10.3)	1 (5.6)	2 (12.5)	0.77	96
Padua score	3 (2-5)	3(1-5)	3 (3-5)	0.006	3 (1-5)	3 (1.5-4.5)	3 (3-5)	0.049	0
Padua score ≥ 4 [N (%)]	59 (34.9)	37 (31.4)	22 (43.1)	0.16	30 (33.3)	11 (29.7)	18 (42.9)	0.43	0
IMPROVE score	2 (1-3)	1.6 (0.97-2.9)	2.2 (1.2-4.1)	0.024	1.6 (0.9-2.9)	1.5 (1.1-2.9)	2.2 (1.42-4.02)	0.15	0
IMPROVE score ≥ 7 [N (%)]	12 (7.1)	7 (5.9)	5 (9.8)	0.35	7 (7.8)	1 (2.7)	4 (9.5)	0.47	0
DIC by ISTH definitions [N (%)]	4 (2.4)	1 (0.8)	3 (5.9)	0.083	0 (0)	1 (2.7)	3 (7.1)	0.042	0
C reactive protein (mg/l)	57.5 (20.7-128.6)	53.5 (17.9-112)	87.5 (35.7-184)	0.009	35.4 (11.7-92.5)	69.1 (54-130)	117 (47.2-204)	<0.001	4
ESR (mm/h)	57 (20.7-128.6)	54 (31-85)	68.5 (35.5-104)	0.67	48.5 (24-82.7)	70.5 (54.7-87.25)	73 (37-107)	0.021	70
Ferritin µg/L	903 (387-1514)	804 (331-1450)	1058 (484-1689)	0.17	700 (308-1115)	1367 (447-2492)	1092 (588-1821)	0.003	29
IL-6 (pg/ml)	43.3 (15.4-98.5)	43.7 (13.2-95.85)	41.5 (22-124)	0.26	39.2 (9.5-86)	74.3 (13.4-131)	41.4 (26.7-153)	0.12	44
IgG RBD [N (%)]	45 (51.1)	30 (47.6)	15 (60)	0.349	24 (50)	8 (47.1)	13 (56.5)	0.817	81
IgM RBD [N (%)]	46 (52.3)	33 (52.4)	13 (52)	0.99	24 (50)	10 (58.8)	12 (52.2)	0.822	81
IgA RBD [N (%)]	44 (50)	27 (42.9)	17 (68)	0.057	19 (39.6)	9 (52.9)	16 (69.6)	0.059	81
IgG S1/S2	53 (60.2)	36 (57.1)	17 (68)	0.470	28 (58.3)	10 (58.8)	15 (65.2)	0.850	81
IgM S1/S2	61 (69.3)	42 (66.7)	19 (76)	0.452	33 (68.8)	11 (64.7)	17 (73.9)	0.816	81
IgA S1/S2	66 (75)	45 (71.4)	21 (84)	0.281	34 (70.8)	13 (76.5)	19 (82.6)	0.556	81
IgG NP	58 (65.9)	42 (66.7)	16 (64)	0.808	31 (64.6)	12 (70.6)	15 (65.2)	0.901	81

DIC disseminated intravascular coagulation; ESR erythrocyte sedimentation rate; INR: international normalized ratio ISTH: International Society of Thrombosis and Haemostasis; PT prothrombin time; PTT: partial thromboplastin time.

Table 2: Thrombotic events

	Diabetes				Diabetes			Median fasting glucose (mmol/l)			
	All	No	Yes	p	Comorbid	New	p	<5.6	5.6-6.9	≥ 7	p
N	169	118	51		32	19		90	37	42	
Patients with at least one event [N (%)]	49 (29)	25 (21.2)	24 (47.1)	0.001	16 (50)	8 (42.1)	0.77	20 (22.2)	9 (24.3)	20 (47.6)	0.009
Median time from symptoms to thrombosis	17 (10-24)	11 (2-20)	18 (8-28)	0.11	21 (11-31)	11 (0-28)	0.44	13 (4-22)	6 (0-12)	18 (3-33)	0.19
Arterial events [N (%)]											
- Myocardial infarction	3 (1.8)	1 (0.8)	2 (3.9)	0.22	2 (6.3)	0 (0)	0.52	0 (0)	2 (5.4)	1 (2.4)	0.10
- Stroke	1 (0.6)	0 (0)	1 (2)	0.30	1 (3.1)	0 (0)	0.99	0 (0)	0 (0)	1 (2.4)	0.19
- Limb ischaemia	6 (3.6)	4 (3.4)	2 (3.9)	0.99	1 (3.1)	1 (5.3)	0.99	4 (4.4)	0 (0)	2 (4.8)	0.42
- Intestinal ischaemia	0 (0)	0 (0)	0 (0)	-	0 (0)	0 (0)	-	0 (0)	0 (0)	0 (0)	-
Total patients with arterial event	10 (5.9)	5 (4.2)	5 (9.8)	0.17	4 (12.5)	1 (5.3)	0.64	4 (4.4)	2 (5.4)	4 (9.5)	0.51
Venous events [N (%)]											
- Isolated spontaneous DVT	17 (10.1)	6 (5.1)	11 (21.6)	0.004	8 (25)	3 (15.8)	0.50	6 (6.7)	3 (8.1)	8 (19)	0.08
- Isolated PVT	15 (8.9)	8 (6.8)	7 (13.7)	0.15	4 (12.5)	3 (15.8)	0.99	4 (4.4)	5 (13.5)	6 (14.3)	0.096
- DVT+ PVT	8 (4.7)	6 (5.1)	2 (3.9)	0.99	1 (3.1)	1 (5.3)	0.99	6 (6.7)	0 (0)	2 (4.8)	0.27
- Catheter-related DVT	8 (4.7)	3 (2.5)	5 (9.8)	0.055	4 (12.5)	1 (5.3)	0.64	4 (4.4)	1 (2.7)	3 (7.1)	0.64
Total patients with venous events	43 (25.4)	22 (18.6)	21 (48.8)	0.004	13 (40.6)	8 (42.1)	0.99	18 (20)	8 (21.6)	17 (40.5)	0.035
Arterial and venous events [N (%)]											
- Myocardial infarction + DVT/PVT	1 (0.6)	0 (0)	1 (2)	0.3	1 (3.1)	0 (0)	0.99	0 (0)	1 (2.7)	0 (0)	0.17
- Stroke + DVT/PVT	0 (0)	0 (0)	0 (0)	-	0 (0)	0 (0)	-	0 (0)	0 (0)	0 (0)	-
- Limb ischemia + DVT/PVT	3 (1.8)	2 (1.7)	1 (2)	0.99	0 (0)	1 (5.3)	0.37	2 (2.2)	0 (0)	1 (2.4)	0.65
Total patients with arterial and venous events	4 (2.4)	2 (1.7)	2 (3.9)	0.58	1 (3.1)	1 (5.3)	0.99	2 (2.2)	1 (2.7)	1 (2.4)	0.99

DVT: Deep vein thrombosis; PVT: Pulmonary vein thrombosis

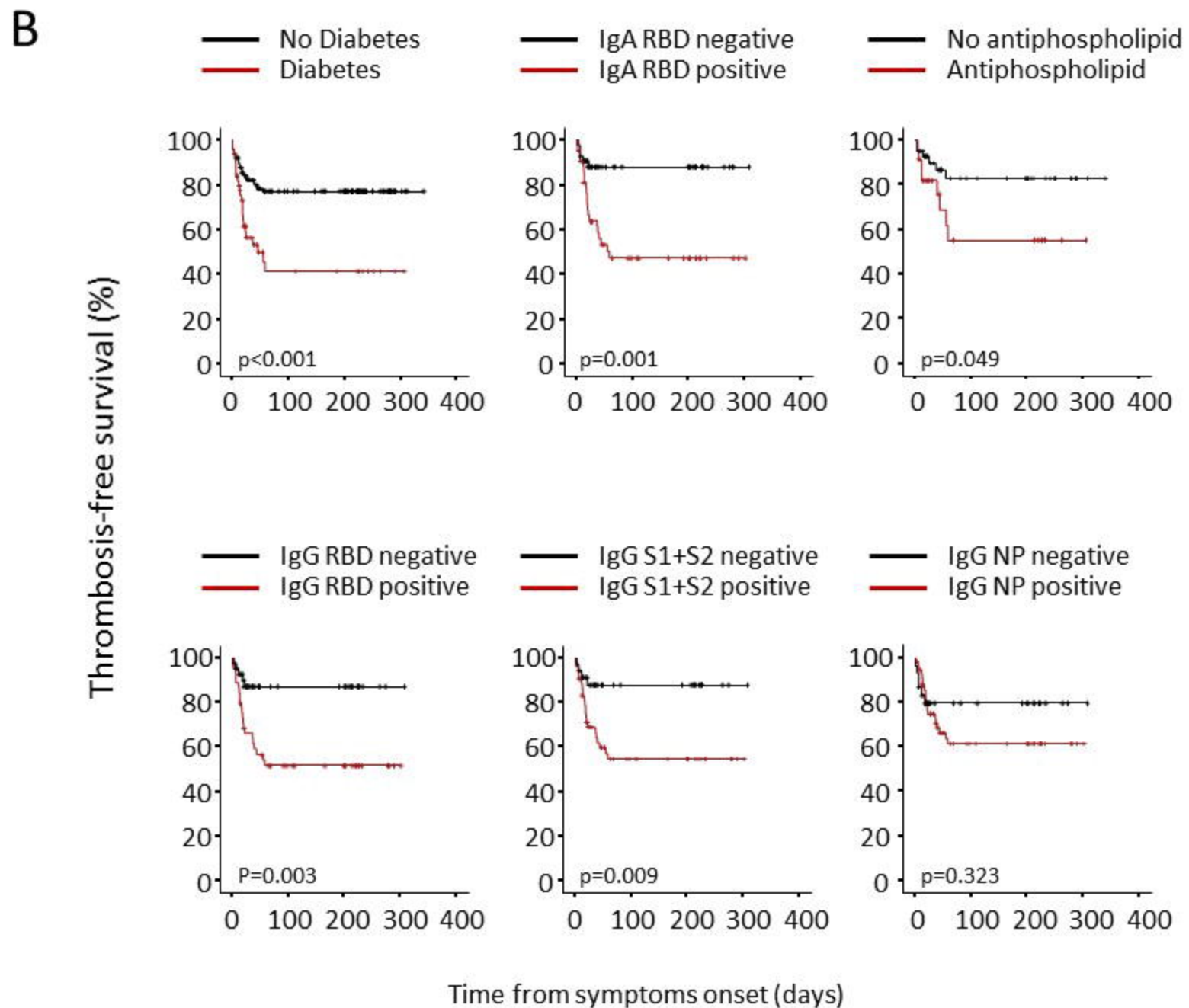
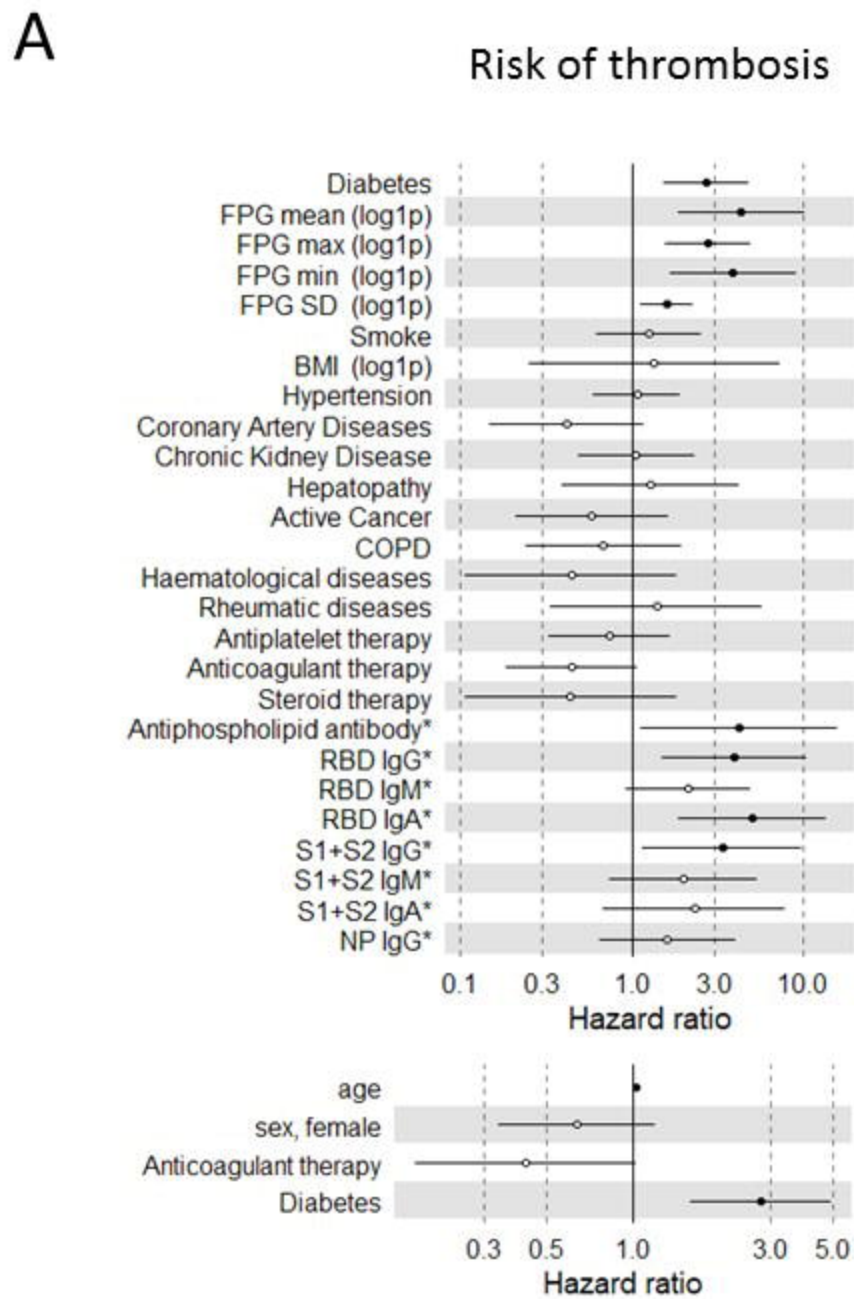


Figure 1

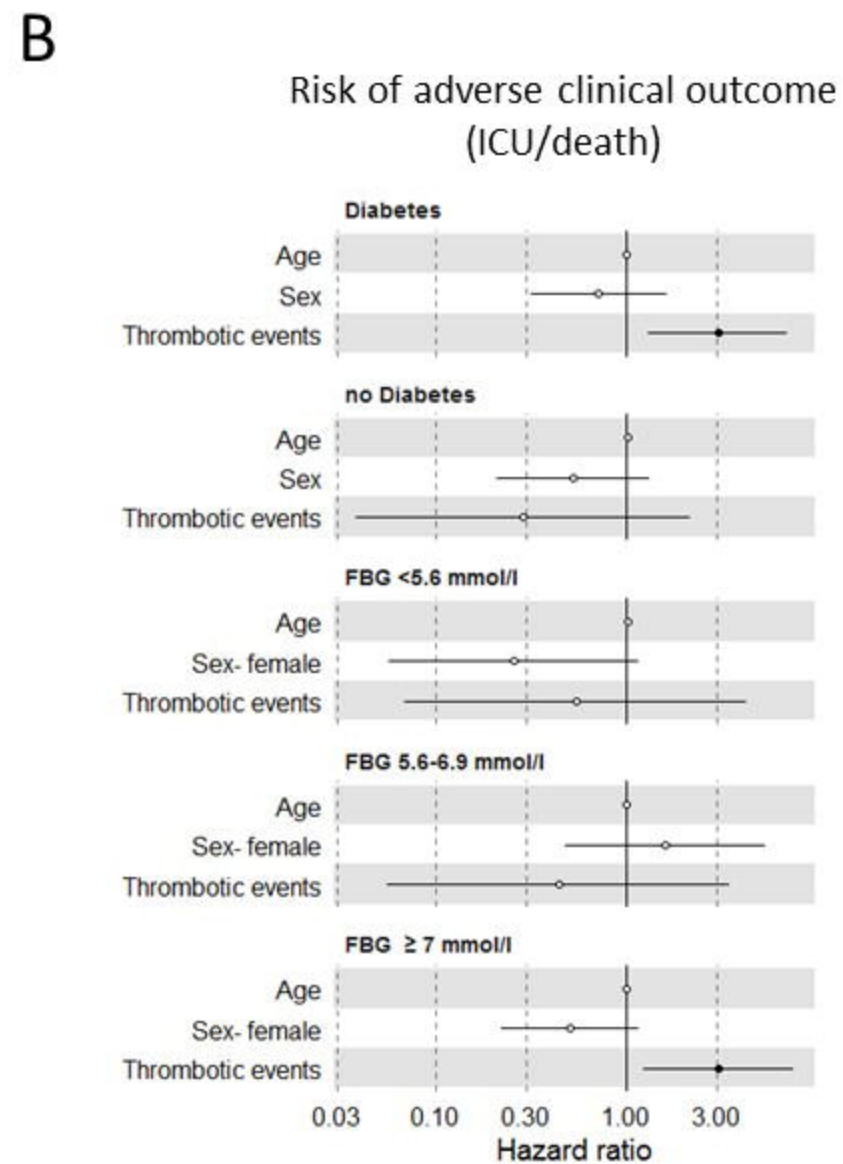
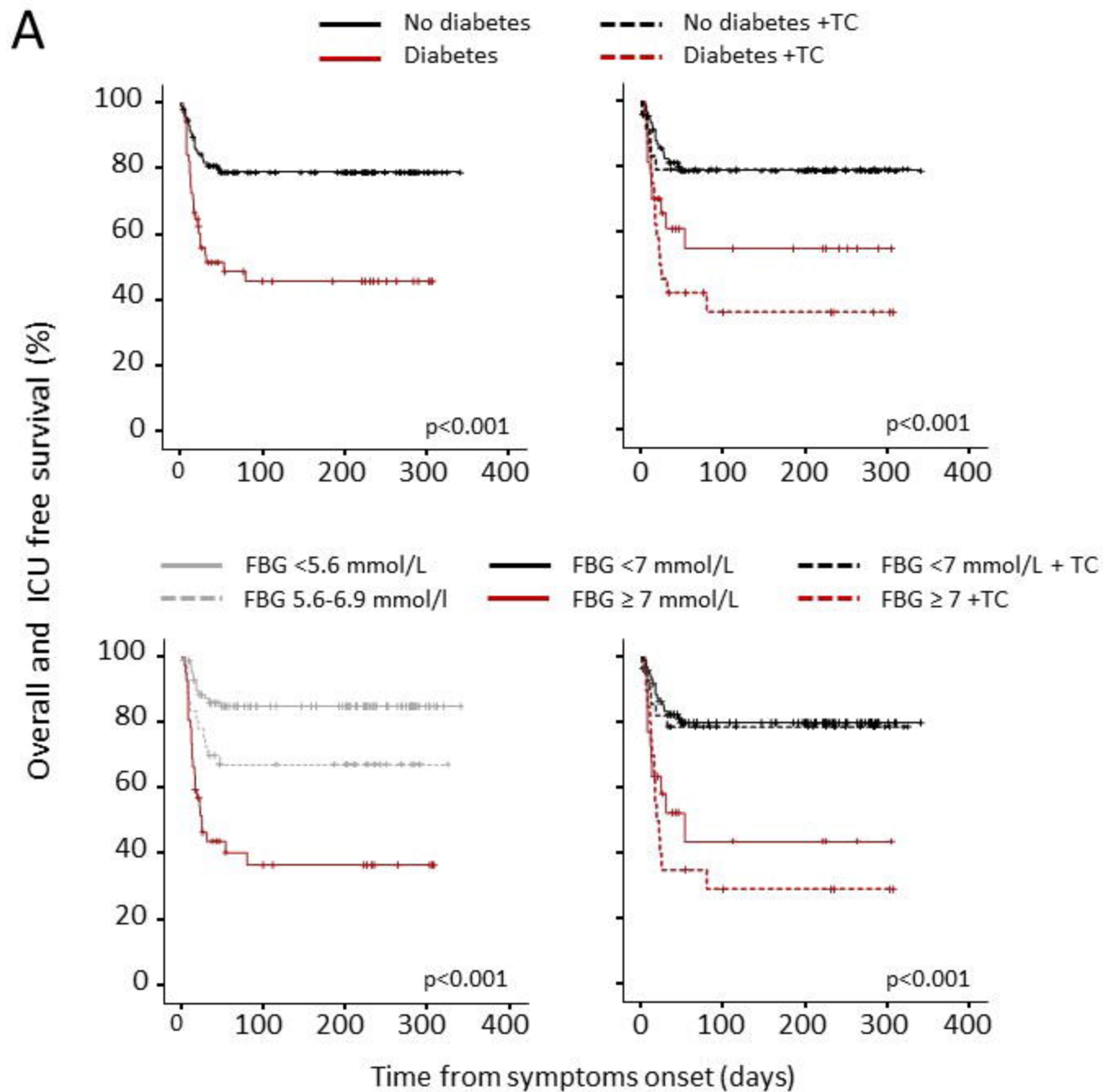


Figure 2