

1 **Title:** Disparities in SARS-CoV-2 Vaccination-to-Infection Risk, Massachusetts 2020-2021

2 **Revision date:** April 14, 2021

3 **Authors:**

4 Scott Dryden-Peterson, MD, MSc

5 Gustavo E. Velásquez, MD, MPH

6 Thomas J. Stopka, PhD, MHS

7 Sonya Davey, MD, MPhil

8 Rajesh T. Gandhi, MD

9 Shahin Lockman, MD, MSc

10 Bisola O. Ojikutu, MD, MPH

11 **Author Affiliations:**

12 Division of Infectious Diseases, Brigham and Women's Hospital, Boston, Massachusetts

13 (Dryden-Peterson, Velásquez, Lockman, Ojikutu);

14 Department of Immunology and Infectious Diseases, Harvard T.H. Chan School of Public Health

15 Boston, Massachusetts (Dryden-Peterson, Lockman);

16 Botswana Harvard AIDS Institute, Boston, Massachusetts (Dryden-Peterson, Lockman);

17 Division of Global Health Equity, Brigham and Women's Hospital, Boston, Massachusetts

18 (Velásquez, Ojikutu);

19 Department of Global Health and Social Medicine, Harvard Medical School, Boston,

20 Massachusetts (Velásquez);

21 Department of Public Health and Community Medicine, Tufts University School of Medicine,

22 Boston, Massachusetts (Stopka);

23 Tufts Clinical and Translational Science Institute, Boston, Massachusetts (Stopka);
24 Department of Medicine, Brigham and Women’s Hospital, Boston, Massachusetts (Davey);
25 Division of Infectious Diseases, Massachusetts General Hospital, Boston, Massachusetts
26 (Gandhi, Ojikutu);

27 **Corresponding Author:** Scott Dryden-Peterson, MD, MSc, Division of Infectious Diseases,
28 Brigham and Women’s Hospital, 75 Francis Street, Boston, MA 02115. Work: (617) 732-8881.
29 sldrydenpeterson@bwh.harvard.edu

30 **Word count (max 600):** 598

31 **References included:** 6

32 **Acknowledgements:** The work was made possible with help from the Harvard University Center
33 for AIDS Research (CFAR), a funded program of the National Institutes of Health (P30
34 AI060354), the National Institute of Allergy and Infectious Diseases (K08 AI141740, K24
35 AI131928, UM1 AI069412), the Dr. Lynne Reid/Drs. Eleanor and Miles Shore Fellowship at
36 Harvard Medical School, and the Burke Global Health Fellowship at the Harvard Global Health
37 Institute. The contents of this manuscript are solely the responsibility of the authors and do not
38 necessarily represent the official views of the National Institutes of Health or the institutions
39 with which the authors are affiliated. The funding source had no role in the design and conduct
40 of the study; collection, management, analysis, and interpretation of the data; preparation,
41 review, or approval of the manuscript; and decision to submit the manuscript for publication.
42 Dr. Dryden-Peterson had full access to all the data in the study and takes responsibility for the
43 integrity of the data and the accuracy of the data analysis.

44

45 **Abstract:**

46 Background:

47 Effective vaccine-based containment strategies for SARS-CoV-2 require equitable coverage of
48 communities at greatest risk of infection. We sought to examine the alignment of vaccination
49 and SARS-CoV-2 risk in Massachusetts to inform public health response.

50

51 Methods:

52 We aggregated cumulative SARS-CoV-2 testing and vaccination data from the Massachusetts
53 Department of Public Health and the Boston Public Health Commission from January 29, 2020
54 to April 9, 2021. We used two approaches to assess vaccination equity: vaccination-to-infection
55 risk (VIR) ratio and Lorenz curves. The VIR ratio was calculated for each community as the
56 quotient of the number of fully vaccinated individuals divided by the cumulative number of
57 confirmed SARS-CoV-2 infections. Lorenz curves were used to describe vaccination relative to
58 COVID-19 burden. A multivariable Poisson model was used to assess predictors of VIR ratio.

59

60 Results:

61 A total of 607,120 (8.9%) SARS-CoV-2 infections were confirmed in Massachusetts residents
62 and 1,485,266 (21.8%) residents were fully vaccinated. Communities with increased
63 socioeconomic vulnerability had lower VIR ratios indicating less equitable vaccination relative to
64 infection risk. In multivariable analysis, decreased vaccination relative to infection risk was
65 independently associated with increasing socioeconomic vulnerability (aRR 0.82 per quartile
66 increase, 95% CI 0.77 to 0.87) and with greater than 20% of the community identified as Black

67 and/or Latinx (aRR 0.67, 95% CI 0.56 to 0.81). Improved community vaccine delivery was
68 associated with higher community proportion of residents aged 65 or older (aRR 1.23 per 5%
69 increase in proportion, 95% CI 1.15 to 1.31). Lorenz curves indicated considerable inequity (Gini
70 0.46 between communities). An estimated 330,000 full vaccination courses would need to be
71 diverted to under-vaccinated communities to achieve equity.

72

73 Conclusion:

74 In conclusion, disparities in vaccine delivery highlight ongoing inequities in our approach to
75 COVID-19 and imperil efforts to control the pandemic.

76 **Introduction:**

77 Effective vaccine-based containment strategies for SARS-CoV-2 require equitable coverage of
78 communities at greatest risk of infection.¹ However, significant disparities in vaccination rates
79 have been observed.² Adapting a concept from HIV prevention efforts,³ we examined the
80 alignment of vaccination and SARS-CoV-2 risk in Massachusetts, creating and applying a
81 vaccination-to-infection risk ratio.

82

83 **Methods:**

84 We aggregated cumulative SARS-CoV-2 testing and vaccination data from the Massachusetts
85 Department of Public Health (MDPH) and the Boston Public Health Commission from January
86 29, 2020 to April 9, 2021. We limited analysis to 291 communities (276 cities and towns; 15
87 Boston neighborhoods) with a population over 3,000 residents (total population 6,795,000).

88

89 We considered each community's cumulative incidence of confirmed SARS-CoV-2 infections to
90 be the best available indicator of future infection risk. We used two approaches to assess
91 vaccination equity: vaccination-to-infection risk (VIR) ratio and Lorenz curves. The VIR ratio was
92 calculated for each community as the quotient of the number of fully vaccinated individuals
93 divided by the cumulative number of confirmed SARS-CoV-2 infections. Communities with VIR
94 ratios below the state-wide mean have lower vaccination coverage relative to their infection
95 risk. Lorenz curves, which assess equity in resource distribution,⁴ were used to describe
96 vaccination relative to COVID-19 burden and calculate summaries of inequity (Gini index) and
97 magnitude of vaccine re-allocation required to achieve equity (Hoover index).

98

99 We utilized population estimates from MDPH and the American Community Survey (2014-
100 2018) to determine community age, race, and ethnic composition. Socioeconomic vulnerability
101 was estimated using the Socioeconomic Status domain of the Social Vulnerability Index.⁵ We fit
102 a Poisson model utilizing robust sandwich estimators to assess associations between
103 community VIR ratios and *a priori* selected predictors: proportion aged 65 years or older (an
104 early vaccination eligibility criterion), proportion identified as Black and/or Latinx (<20% or
105 ≥20%), quartile of socioeconomic vulnerability, and community population (<50,000 or ≥50,000
106 residents). We adhered to STROBE guidelines; this work was designated as exempt by the Mass
107 General Brigham IRB.

108

109 **Results:**

110 As of April 9, 2021, 607,120 (8.9%) SARS-CoV-2 infections had been confirmed in Massachusetts
111 residents and 1,485,266 (21.8%) residents were fully vaccinated. Cumulative incidence of
112 confirmed SARS-CoV-2 infection (minimum: 1.9%, maximum: 22.7%) and complete vaccination
113 (minimum: 10.1%, maximum: 53%) varied considerably between communities. Communities
114 with increased socioeconomic vulnerability had lower VIR ratios indicating less equitable
115 vaccination relative to infection risk (**Figure 1**).

116

117 In multivariable analysis, decreased vaccination relative to infection risk was independently
118 associated with increasing socioeconomic vulnerability (adjusted relative risk [aRR] 0.82 per
119 quartile increase, 95% CI 0.77 to 0.87, $p < 0.001$) and with greater than 20% of the community

120 identified as Black and/or Latinx (aRR 0.67, 95% CI 0.56 to 0.81, $p < 0.001$). Improved community
121 vaccine delivery was associated with higher community proportion of residents aged 65 or
122 older (aRR 1.23 per 5% increase in proportion, 95% CI 1.15 to 1.31, $p < 0.001$). Community
123 population size was not associated with the VIR ratio ($p = 0.65$).

124
125 Lorenz curves indicated considerable inequity, with an estimated Gini coefficient (1, perfect
126 equity; 0, perfect inequity) of 0.46 between communities and 0.51 by individuals statewide
127 (**Figure 2**). An estimated 330,000 full vaccination courses would need to be diverted to under-
128 vaccinated communities to achieve equity.

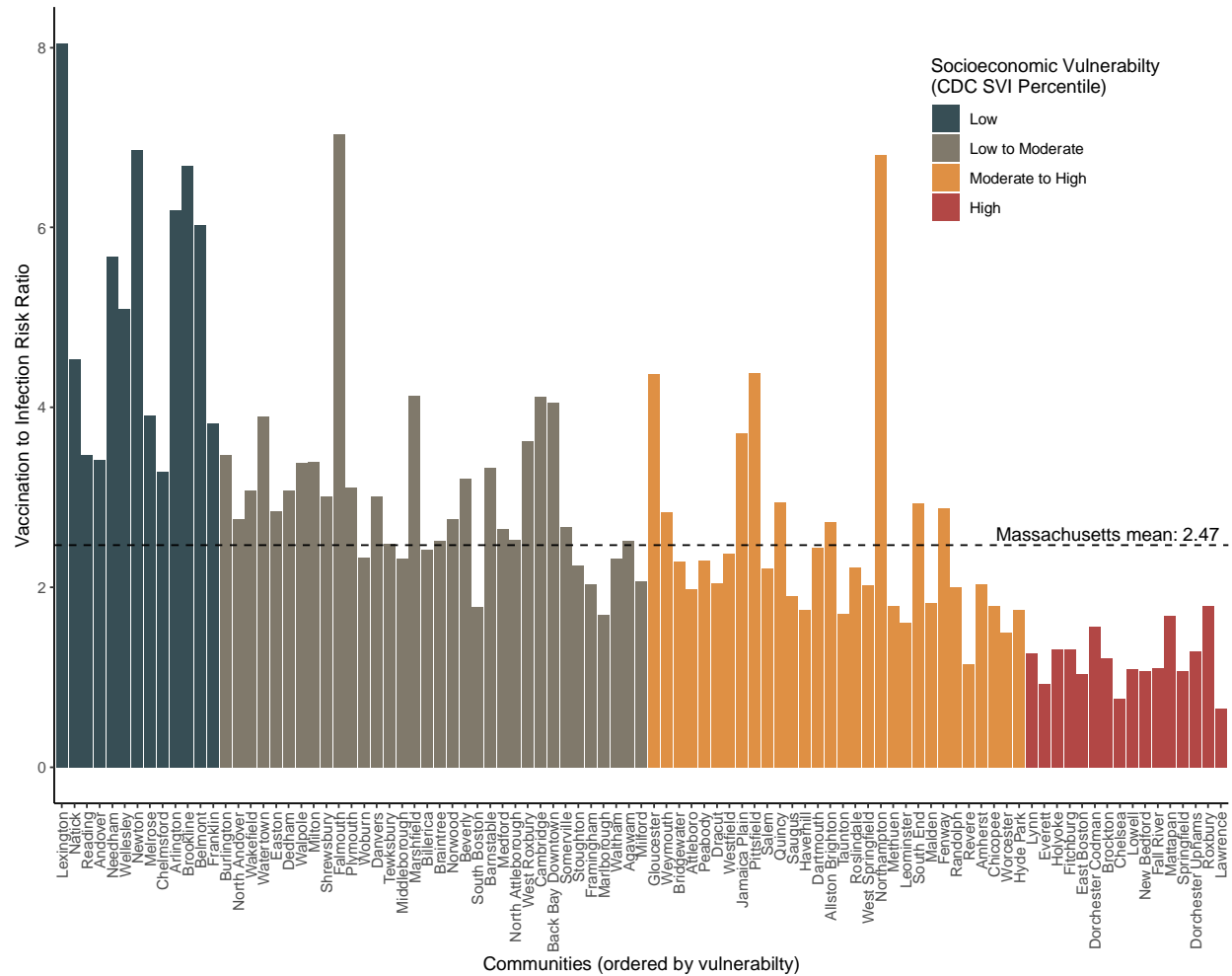
129

130 **Discussion:**

131 These analyses of SARS-CoV-2 vaccination indicate lower vaccine delivery relative to infection
132 risk in socioeconomically vulnerable communities and those with larger proportions of Black
133 and Latinx populations. The disparities reported here are greater than those previously
134 reported using county-level data,² and emphasize the importance of monitoring and targeting
135 smaller geographic units to guide equitable distribution of vaccines.⁶

136

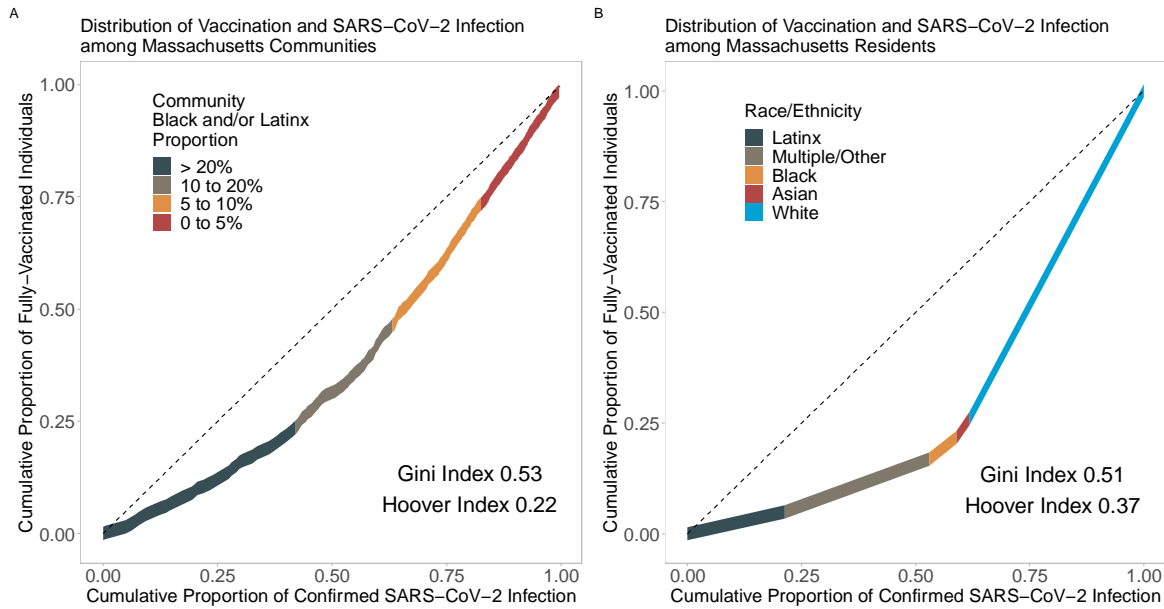
137 In conclusion, disparities in vaccine delivery highlight ongoing inequities in our approach to
138 COVID-19 and imperil efforts to control the pandemic.



139

140

141 **Figure 1.** The vaccination-to-infection risk (VIR) ratio among Massachusetts communities with a
 142 population greater than 25,000 residents, ordered by socioeconomic vulnerability. The VIR ratio
 143 is calculated as the cumulative number of fully vaccinated individuals divided by the cumulative
 144 number of confirmed SARS-CoV-2 infections in each community reported from January 29,
 145 2020 through April 9, 2021.



146

147

148 **Figure 2.** Lorenz curves of cumulative proportion of individuals who have been fully vaccinated

149 against SARS-CoV-2 versus the cumulative proportion of confirmed COVID-19 infections by

150 communities (A) and individual residents (B) in Massachusetts, grouped by measures of racial

151 and ethnic composition. Non-White residents account for 62% of confirmed infections and only

152 26% of full vaccinations. Cases and vaccinations reported from January 29, 2020 through April

153 9, 2021 are included.

154 **References**

155

156 1. Wrigley-Field E, Kiang MV, Riley AR, et al. Geographically-targeted COVID-19 vaccination is
157 more equitable than age-based thresholds alone. *medRxiv*. 2021.03.25.21254272;
158 doi:10.1101/2021.03.25.21254272

159 2. Hughes MM, Wang A, Grossman MK, et al. County-Level COVID-19 Vaccination Coverage and
160 Social Vulnerability — United States, December 14, 2020–March 1, 2021. *MMWR Morb Mortal*
161 *Wkly Rep*. 2021;70(12):431-436. doi:10.15585/mmwr.mm7012e1

162 3. Siegler AJ, Mouhanna F, Giler RM, et al. The prevalence of pre-exposure prophylaxis use and
163 the pre-exposure prophylaxis-to-need ratio in the fourth quarter of 2017, United States. *Ann*
164 *Epidemiol*. 2018;28(12):841-849. doi:10.1016/j.annepidem.2018.06.005

165 4. Mody A, Pfeifauf K, Geng EH. Using Lorenz Curves to Measure Racial Inequities in COVID-19
166 Testing. *Jama Netw Open*. 2021;4(1):e2032696. doi:10.1001/jamanetworkopen.2020.32696

167 5. Centers for Disease Control and Prevention/ Agency for Toxic Substances and Disease
168 Registry/ Geospatial Research, Analysis, and Services Program. CDC Social Vulnerability Index
169 2018 Database US.
170 https://www.atsdr.cdc.gov/placeandhealth/svi/data_documentation_download.html. Accessed
171 on September 9, 2020.

172 6. Jean-Jacques M, Bauchner H. Vaccine Distribution—Equity Left Behind? *JAMA*.
173 2021;325(9):829-830. doi:10.1001/jama.2021.1205

174