

## **TITLE**

**Study protocol for a cross-sectional study on knowledge, attitude, and practice towards thalassemia among Indonesian youth**

## **AUTHORS**

Muhammad Maulana Wildani<sup>1</sup>, Visabella Rizky Triatmono<sup>1</sup>, Edward Christopher Yo<sup>1</sup>, Mikhael Yosia<sup>1</sup>, Pustika Amalia Wahidiyat<sup>2</sup>

## **AFFILIATIONS**

1. Faculty of Medicine Universitas Indonesia, Jakarta, Indonesia
2. Department of Child Health, Faculty of Medicine, Universitas Indonesia - Cipto Mangunkusumo Hospital, Jakarta, Indonesia

### ***Corresponding author***

Pustika Amalia Wahidiyat, Division of Hematology and Oncology, Department of Child Health, Cipto Mangunkusumo Hospital - Faculty of Medicine Universitas Indonesia, Jalan Pangeran Diponegoro No. 71, Kenari, Senen, Jakarta Pusat 10430. Email: pa.wahidiyat@gmail.com

### ***Word count:***

3989 words

## **ABSTRACT**

### ***Introduction***

Thalassemia is an inherited hemoglobinopathy with high prevalence and incidence in Indonesia. It leads to health, psychosocial, and economic burdens that affect patients, caregivers, and the country. As treatments for thalassemia in Indonesia remain expensive, not readily available, or associated with poor compliance, thalassemia prevention through screening programs is highly recommended to reduce the number of new cases. It is best to target thalassemia prevention and education to youth, but baseline data regarding their knowledge, attitude, and practice must first be assessed to measure their current awareness level as well as behavioral patterns regarding thalassemia. Currently, there has been limited research on public perception towards thalassemia in Indonesia.

### ***Methods and analysis***

This observational, cross-sectional study will recruit at least 500 participants between the age of 15 - 24 across all provinces in Indonesia. This is the first nationwide thalassemia study that explores knowledge, attitude, and practice among Indonesian youth (15 - 24 years old) – including thalassemia major patients, carriers, unaffected individuals, and individuals with unknown carrier status. A questionnaire will be disseminated online through social media. The questionnaire will consist of 28 questions to assess knowledge, attitude, and practice from the general population and 38 questions to assess knowledge, attitude, and practice specifically from thalassemia major patients. Questions about whether thalassemia is perceived as a curse, role of consanguinity on the mode of inheritance, and willingness to undergo screening are incorporated to specifically suit Indonesian sociocultural settings.

### ***Ethics and dissemination***

This study has been approved by the Ethical Committee of Faculty of Medicine, Universitas Indonesia, and Cipto Mangunkusumo Hospital. Informed consent will be obtained from all participants before completing the online questionnaire. Results will be published in a relevant journal and scientific meetings as well as shared with local stakeholders and policymakers.

### ***Study registration***

This study has been registered at ClinicalTrials.gov (NCT04706585).

### ***Keywords***

*Observational, Cross-sectional study, Knowledge, Attitude, Practice, Thalassemia, Indonesia, Youth*

## ARTICLE SUMMARY

### *Strengths and limitations of this study*

- First nationwide knowledge, attitude, and practice study on Indonesian youth that provides baseline data for thalassemia major patients, carriers, unaffected individuals, and individuals with unknown carrier status.
- Incorporation of knowledge, attitude, and practice questions that are specific to Indonesian cultural settings, which include perception of thalassemia as a curse and impact of consanguinity on inheritance of thalassemia.
- Online dissemination of the survey via social media allows us to reach a large number of Indonesian youth from all backgrounds who are located in all 34 provinces of Indonesia
- The use of online self-administered questionnaire for data collection may discourage those with poor Internet connection, particularly in remote areas, from participating.
- Lack of background data on public perception towards thalassemia in Indonesia means that some assumptions from expert opinions and educated guesses have to be made when developing the questionnaire.

## INTRODUCTION

Around the globe, it is estimated that around 330,000 people are affected by hemoglobin abnormalities (hemoglobinopathy) every year, and thalassemia is a type of inherited hemoglobinopathy that is responsible for most of the cases[1]. Thalassemia is a condition where mutation occurs to the globin gene, which causes a defect in the  $\alpha$ -globin or  $\beta$ -globin hemoglobin chain. This results in  $\alpha$ -thalassemia and  $\beta$ -thalassemia, respectively[2]. The most severe type is  $\beta$ -thalassemia major as the patients will have severe anemia and require lifelong blood transfusion[1]. A significant number of thalassemia cases are found within the “thalassemia belt”, which spans across the Mediterranean ocean to Asia, including Indonesia. Approximately 5% of Indonesian population carry the thalassemia gene as carriers. With a total population of 270 million people, this percentage is really high when compared to that in other countries within the thalassemia belt[3,4]. Moreover, the data from 2019 showed that Indonesia has around 10,500 diagnosed cases across the country, and it is projected that the number could reach 20,000 by 2020. Nevertheless, these numbers are likely underestimated since many thalassemia cases in Indonesia remain undiagnosed[5,6].

In addition to high prevalence and incidence in Indonesia, thalassemia carries a high burden on the lives of patients. Thalassemia major patients are required to undergo blood transfusion as one of the therapies. However, long-term and routine blood transfusion may result in iron overload on organs such as the heart, liver, endocrine organs, and bone[7]. In addition, thalassemia major patients may suffer from conditions such as impaired growth and development, delayed puberty, mental retardation, depression, and anxiety[8-10]. This may lead to lower productivity as studies showed that thalassemia patients are frequently absent from school or work. Around 34% of patients on employment were absent from work for one or more days, while around 40% of students were absent from school for more than 8 weeks[11,12]. Among patients from the youth age group, poor psychosocial wellbeing is commonly found as stunted growth, skeletal abnormalities, and delayed puberty cause dissatisfaction towards body image[13,14]. Since thalassemia is a chronic condition, it also exposes caregivers to high stress levels. Overall, thalassemia negatively impacts the quality of life of patients and their caregivers[15].

It is possible to reduce the number of thalassemia cases through adequate prevention, screening, and education programs. Several countries within the thalassemia belt such as Cyprus, Greece, and Italy already implemented thalassemia prevention programs to reduce the number of thalassemia cases in their countries[16]. By 2007, Cyprus had successfully cut down the number of thalassemia major

cases into zero cases following a mandatory national thalassemia prevention program which includes screening and prenatal diagnosis[17]. Similar preventive approach may even offer greater benefits to low-to-middle-income countries including Indonesia, where definitive treatments (i.e., bone marrow transplant, hematopoietic stem cell therapy) and supportive treatments (i.e., blood transfusion, iron chelating drugs) for thalassemia remain either expensive, not readily available, or associated with poor compliance[6,18]. The Indonesian Ministry of Health claimed that funding for thalassemia treatment accounted for USD 149 million between 2014 and 2018, putting it as the fifth most expensive spending from the total healthcare budget. Treatment for thalassemia patients in Indonesia can cost up to USD 28,500 per person, whereas the budget for thalassemia screening only cost USD 29 per person[19]. Hence, in addition to reducing the number of newborns affected by thalassemia every year, prevention and screening for thalassemia can also save a country from high economic burden. As stated by Indonesian Ministry of Health, screening for thalassemia aims to identify carriers and inform them about the chances of having a thalassemia-affected offspring as well as the preventive measures. To date, only Jakarta, the capital city of Indonesia, mandates mean corpuscular volume (MCV) and mean corpuscular hemoglobin (MCH) examinations prior to marriage[6]. It is currently unclear whether the Indonesian government plans to extend this policy about mandatory premarital screening to other regions[20].

Despite the good intention of premarital screening policy, the majority of couples screened may still proceed to marriage regardless of their screening result. This often happens in highly religious countries including Indonesia, where the legal dimension of marriage is intertwined with cultural and religious values. A study in Iran discovered that half of all couples proceeded to marriage despite the fact that they were carriers of  $\beta$ -thalassemia trait[21]. Another study in Central Java, Indonesia, found that half of the couples who applied for marriage had poor knowledge regarding thalassemia and none of them participated in premarital screening[20]. To overcome this limitation, some countries have suggested the implementation of antenatal screening, which is performed during pregnancy[16]. However, since Indonesian law currently does not allow abortion following antenatal screening, antenatal screening is not a feasible solution. This dilemma has led experts in Indonesia to suggest that it may be best to conduct thalassemia screening programs on school-aged children and university students, so they can consider potential marriage partners from an early age[6].

In order for prevention and education programs for the youth to be successful, the level of their knowledge, attitude, and practice (KAP) must first be assessed. This is because KAP often translates into awareness level towards a disease and enables behavioral patterns of a specific population to be

defined. Results from past studies in other countries regarding KAP towards thalassemia have been used to inform thalassemia screening policy and education program[22-25]. Considering the high burden of thalassemia as well as lack of prevention and education programs in Indonesia, there is an urgent need to investigate KAP that is representative of the Indonesian youth population.

## METHODS AND ANALYSIS

### *Study design and aims*

The study is designed as an observational, cross-sectional survey using a newly developed questionnaire. The primary objective of this study is to assess the knowledge, attitude, and practice of young people in Indonesia towards thalassemia. Another objective is to determine their willingness to undergo thalassemia screening independently. Results from the study will also be intended to serve as a foundation for future research and policies to inform better thalassemia prevention and promotion strategy.

### *Time period*

The study started its planning phase between March 2021 and April 2021 and is expected to run until August 2021. Questionnaire distribution to collect the data will begin in June 2021.

**Table 1. Gantt chart depicting the study timeline**

Task	March 2021	April 2021	May 2021	June 2021	July 2021	August 2021
Planning and obtaining ethical clearance	■	■				
Finalizing and drafting the study protocol			■			
Questionnaire development through literature review and discussion with experts			■			
Pilot test and questionnaire finalization				■		
Questionnaire distribution - data collection				■		





### ***Sample size calculation***

The minimum sample size is calculated using the formula:  $N = (Z\alpha^2 \times p \times q) / L^2$ .  $Z\alpha$  is the level of confidence,  $p$  is the probability of individuals that have the disease,  $q$  is the probability of individuals who do not have the disease ( $1 - p$ ), and  $L$  is the precision of estimate or the margin of error. Value for  $Z\alpha$  is 1.96 (95% confidence interval),  $p$  is 0.5, and  $q$  is 0.5. The value 0.5 is chosen for  $p$  since reliable data on the number of thalassemia patients in Indonesia, despite its high prevalence, is not available. Value for  $L$  is 0.10 for thalassemia major patients and 0.05 for the rest of the participants. The result of the calculations is 480. This is rounded up to the nearest hundred, so a minimum of 500 participants is required for this study.

### ***Development and refinement of questionnaire***

#### **1. Stage 1 - Translating and drafting the questionnaire**

Since there was no previous study in Indonesia that corresponds to our research objectives, a self-developed questionnaire is produced. Literature search is conducted through Google Scholar, PubMed, and other databases which include studies that investigate KAP for thalassemia in other countries. The researchers, who have proficient English language skills, then compile together a list of previously used and validated KAP questions and translate them into Bahasa Indonesia, which is the official language of Indonesia. Questions that are suitable with the context of Indonesian population will be given priority. The list of questions will then be discussed and appraised together with a professor of pediatric hematology involved in thalassemia management for many years and an expert physician with expertise in public health research. A combination of 12 questions for knowledge, 10 questions for attitude, and 6 questions for practice is selected from the list to assess the KAP of members from the general population. Furthermore, an addition of 8 specific questions for knowledge and 2 specific questions for attitude is also added but only to be answered by thalassemia major patients only. Hence, there will be a total of 28 questions to assess KAP of members from the general population and 38 questions to assess KAP of thalassemia major patients.

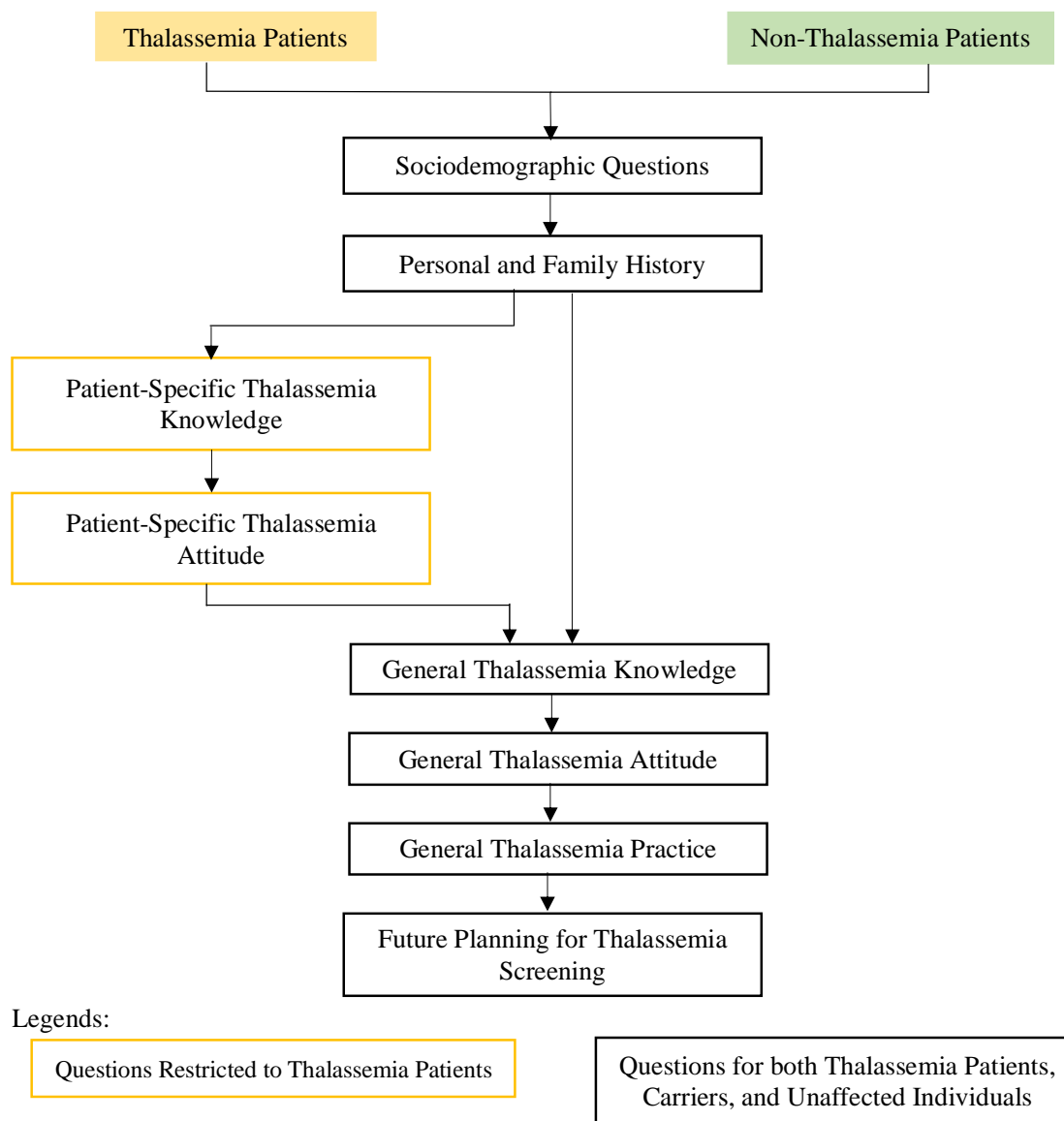
The questions will be in multiple choice format for the knowledge component (Yes/No/Don't know and statements to choose) and four-point Likert scale (1 = fully disagree; 4 = fully agree) for attitude and practice components. KAP questions about thalassemia include its cause, mode of transmission and inheritance, carrier, signs and symptoms, therapy, complications, prevention and screening, and information-seeking behavior.

In addition, the questionnaire includes questions about the participants' sex, age, ethnicity, religion, location, socioeconomic level, education level, parents' characteristics, source of information for thalassemia, and other demographic information. All questions will be uploaded into one single Google Form and made online. Through a customizable feature in Google Form, the additional 8

knowledge and 2 attitude questions can only be seen and answered by thalassemia major patients but not by the rest of the participants.

## 2. Stage 2 - Pilot test and final revision of questionnaire

The questionnaire will be piloted among 50 randomly chosen eligible participants to evaluate its difficulty, readability, validity, and reliability. These selected participants will be asked whether they believe that some questions are hard to comprehend or not appropriate. After re-evaluation of feedback by the research team and same panel of experts, changes will be made where necessary. These may include modification of the question wording, deletion of inappropriate or irrelevant questions, or addition of questions. The participants who are asked to complete the questionnaire during pilot test will not be included in the whole study sample.



**Figure 1. Flow chart of the questionnaire**

### ***Informed consent***

After reading and understanding the research aims, potential participants will be asked to give their consent in the first page of the questionnaire. They cannot proceed to the next section without consent. There will be no attempt to coerce potential participants to give consent, and they are free to withdraw anytime during the questionnaire completion.

### ***Questionnaire distribution and coordination***

This study uses convenience and snowball sampling methods. Starting from the first week of June 2021 until the end of the month where necessary, the online survey link will be distributed mainly through social media. The social media platforms include Facebook, Twitter, Instagram, WhatsApp, and LINE as they all have a large share of audience from Indonesia. Visual aid in the form of posters will also be produced and deployed to help attract attention. Each member of the research team is responsible for distributing the link and poster with as many peers and colleagues as possible. Every week, a virtual meeting will be held to evaluate the progress and number of responses. If responses from a particular province or demographic group are lacking, the research team will encourage participants from those groups to distribute the link with their network. For example, if there is still a limited number of responses from middle school and high school students, the research team will enlist the help of teachers and schools. Another targeted approach for recruiting thalassemia patients will be to work with youth groups and non-governmental organizations (NGOs) specializing in thalassemia to disseminate the survey link.

### ***Data management***

After the data collection period, all responses in Google Form will be downloaded as Microsoft Excel file. Data will be cleaned to exclude duplicates and invalid responses. Responses from thalassemia major patients and the rest of the participants will then be put in two separate documents as they are intended to be analyzed separately. All files will be encrypted with a password that can only be accessed by the research team. Finally, the data sets will be transferred to SPSS version 24 software for statistical analysis.

### ***Data analysis***

For KAP assessment, the widely adopted Bloom's cutoff points are the following: 80-100% (good KAP), 60-79% (moderate KAP), and less than 60% (poor KAP)[29-31]. In this study, a modified Bloom's cutoff value of 75% will be used to categorize participants' knowledge, attitude, and practice into two levels: poor/negative and good/positive. This cutoff value is also based on previously published KAP studies[32-35].

Regarding the knowledge component, the number of correct answers by each participant will be automatically scored by Google Form based on our answer key. A correct answer will be given 1 point while an incorrect or “don’t know” answer will be given 0 point. For thalassemia major patients, a score from 0 to 14 indicates “poor” knowledge, whereas a score from 15 to 20 indicates “good” knowledge. For the rest of the participants, a score from 0 to 8 indicates “poor” knowledge, whereas a score from 9 to 12 indicates “good” knowledge.

Regarding the attitude component, a total score based on the responses to statements on a four-point Likert scale will first be computed. For thalassemia major patients, a score from 12 to 35 reflects “negative” attitude, whereas a score from 36 to 48 reflects “positive”. For the rest of the participants, a score from 10 to 29 reflects “negative” attitude, whereas a score from 30 to 40 reflects “positive” attitude.

Regarding the practice component, a total score based on the responses to statements on a four-point Likert scale will first be computed. Since the set of questions for practice is identical for both thalassemia major patients and the rest of the participants, the score range used is the same. A score from 6 to 17 reflects “poor” practice, whereas a score from 18 to 24 reflects “good” practice.

The result of descriptive statistics will be analyzed to assess the overall trend in KAP scores and summary of the sample demographic characteristics. Moreover, responses towards willingness to undergo thalassemia screening and information source related to thalassemia will be described. Chi-square test will be used to evaluate the association between participants’ KAP levels and their demographic characteristics, followed by logistic regression to determine the relative importance of certain variables in predicting participants’ KAP levels. Odds ratio (OR) and 95% confidence intervals (CI) will be calculated. Pearson correlation will be used to assess whether knowledge, attitude, and practice scores are associated with one another. Significance level is set at  $p < 0.05$ .

### ***Ethics and dissemination***

The study has been granted ethical clearance by the Ethical Committee of Faculty of Medicine, Universitas Indonesia, and Cipto Mangunkusumo Hospital (KET-1517/UN2.F1/ETIK/PPM.00.02/2020). Prior to questionnaire distribution, any necessary changes in protocol will be communicated to and approved by the same ethical committee. Informed consent will be obtained from all participants before completing the online questionnaire. Results will be published in a relevant open-access, peer-reviewed journal and scientific meetings as well as shared with local stakeholders and policymakers.

### ***Confidentiality and data retention***

The responses collected through the online questionnaire are meant to be confidential and anonymous. Participants will not be asked to include their name, address, or other personal information that may be traceable. The only exception is phone numbers, in which participants have to include it in the early section of the questionnaire. This, however, is not part of the study's interest and will only be used as participant's unique identifier to remove duplicate responses. It will not be used for other purposes or published anywhere. There will be no attempt to identify the individuals to which data belong to. All collected data will be stored in a cloud storage that can only be accessed by the research team. Data backup will also be made and stored in the primary investigator's personal computer.

### ***Patient and public involvement***

Both thalassemia patients and the general public are involved in the conception of the study, development of the study protocol, finalization of the questionnaire, and sample collection procedure. They will also be involved in dissemination of the key findings from our study, as short campaign and webinar will be planned to raise thalassemia awareness among Indonesian youth. Feedbacks and personal experiences from thalassemia patients and their community are gathered to inform the study's background and research questions. Prior to widespread survey distribution, the questionnaire will be piloted among 50 young people in order to suggest changes in the questionnaire content. Lastly, all participants can provide criticism and suggestions as the phone number of a representative of the research team will be attached in the front page of the online questionnaire.

## DISCUSSION

Despite the notion that prevention is fundamental in reducing the high disease burden of thalassemia, most existing studies focused on the clinical aspects of thalassemia[36-39]. On the other hand, public perception and awareness towards the disease, especially in Indonesia, remain understudied. To our knowledge, this is the first nationwide study that explores KAP towards thalassemia among Indonesian youth. Currently, 80% of the productive age population in Indonesia (15-64 years old) are mainly from the reproductive age group (15-49 years old)[40]. This study focuses on Indonesian youth of age 15-24 as they will soon enter the stage of marriage and parenthood, since thalassemia gene can be passed down from parents to their offspring. Previously, a study in Semarang, Indonesia explored the KAP of 96 medical students towards thalassemia prevention. Based on the study, a large proportion of the respondents had good knowledge (42.7%), positive attitude towards thalassemia screening (72.9%), good practice towards preventive measures of the disease (91.7%), but lacked the willingness to undergo screening immediately[41]. However, its results are not representative of the whole Indonesian youth population as the study was targeted to medical students in one region.

This study includes thalassemia major patients, carriers, unaffected individuals, and individuals with unknown carrier status as it wants to test the hypothesis about whether thalassemia major patients have better KAP than the rest of the respondents. It is assumed that thalassemia major patients are equipped with better knowledge about the disease as they have undergone series of counselling with their healthcare providers. Education about the disease is an essential component of a patient's life as it can promote their capability to perform self-care[42]. In correlation to this, the study also aims to measure to what extent thalassemia major patients understand their disease.

Considering the ongoing pandemic in Indonesia, the questionnaire will be disseminated online. A major advantage of using an online questionnaire is that all responses are automatically gathered in one online sheet. The researchers will be able to observe real-time demographic distribution of the respondents. Hence, if a particular region or demographic group is underrepresented, targeted questionnaire distribution through snowball sampling can be performed immediately. Online distribution of the questionnaire also allows for a streamlined data collection approach, faster data collection, easier monitoring, and less resources. Throughout the pandemic, this method has gained increasing popularity among observational, cross-sectional studies.

Regarding knowledge and attitude in Indonesian context, the study specifically incorporates questions about whether thalassemia is perceived by respondents as a curse. This is to explore whether such misguided stigma, as what is perceived by the public towards leprosy, is also present towards

thalassemia. A study that explored public perception towards leprosy in Cirebon, Indonesia revealed that some patients believed that sorcery is one of the causes of the disease. In practice, these patients also prefer seeking treatment from traditional healers instead of licensed physicians[43].

As thalassemia is inherited through autosomal recessive manner, consanguineous marriage increases the risk of passing down the gene to offspring[44]. The prevalence of incest cases in Indonesia has increased over the decade. Surprisingly, 77% of the perpetrators are biological fathers or step-fathers of the daughter[45]. Hence, the questionnaire also includes questions that explore respondents' view towards consanguinity and its relation to thalassemia.

Furthermore, the questionnaire also explores respondents' willingness to undergo thalassemia screening and when do they plan to do so. A question that measures the proportion of respondents who have had screening before is also included. The decision to include these questions is influenced by previous studies that suggested there is a high prevalence of thalassemia carriers across several areas in Indonesia[46-50]. It is important to understand the trend of the answers to these questions in order to inform future thalassemia prevention, screening, and education programs in Indonesia.

Despite the study's strengths and novelty, there are several challenges that may be encountered during the data collection process. Since the questionnaire will be fully online, respondents in remote locations with poor Internet connection may not be able to access it. Additionally, as the questionnaire will be self-administered, respondents who are struggling with functional illiteracy may also have difficulty in understanding the questions. Last but not least, the findings of our study may not be generalizable to populations of other age groups and other countries.

## **CONCLUSION**

High burden of thalassemia in Indonesia can be significantly reduced through adequate prevention, screening, and education programs. These programs are best delivered to the youth population who will soon enter the stage of marriage and parenthood, so they can consider potential marriage partners from an early age and therefore prevent the birth of newborns with thalassemia major. Through the use of an online questionnaire, this novel study will measure the KAP towards thalassemia among Indonesian youth. Several questions that are unique to the Indonesian settings such as whether thalassemia is perceived as a curse and the role of consanguinity in its mode of inheritance are included. The results of this nationwide study will serve as the foundation for future studies and policies.

## LIST OF ABBREVIATIONS

CI	Confidence interval
KAP	Knowledge, attitude, practice
MCH	Mean corpuscular hemoglobin
MCV	Mean corpuscular volume
NGO	Non-governmental organization
OR	Odds ratio
SPSS	Statistical Package for the Social Sciences
UNFPA	United Nations Population Fund
USD	United States dollar

### *Acknowledgement*

We are grateful to Thalassemia Movement community for their help in disseminating the online survey particularly to thalassemia major patients across Indonesia. We would also like to express our gratitude to the Faculty of Medicine, Universitas Indonesia for the support.

### *Authors contribution*

MMW, ECY, VRT, MY, and PAW equally contributed to the conception of the study, development of the study protocol, and development of the questionnaire. MMW, ECY, and VRT performed literature search and drafted the manuscript. MY and PAW reviewed the manuscript and suggested necessary changes. All authors have approved of the final version of this manuscript.

### *Funding statement*

This research received no specific grant from any funding agency in the public, commercial or not-for-profit sectors.

### *Competing interests statement*

The authors declare that they have no competing interests.



## REFERENCES

1. Kountouris P, Lederer CW, Fanis P, et al. IthaGenes: an interactive database for haemoglobin variations and epidemiology. *PLoS One* 2014;9(7):e103020. doi: 10.1371/journal.pone.0103020
2. Taher AT, Weatherall DJ, Cappellini MD. Thalassaemia. *Lancet* 2018;391:155-67. doi: 10.1016/S0140-6736(17)31822-6
3. Colah R, Gorakshakar A, Nadkarni A. Global burden, distribution and prevention of  $\beta$ -thalassemias and hemoglobin E disorders. *Expert Rev Hematol* 2010;3(1):103-17. doi: 10.1586/ehm.09.74
4. The world bank in Indonesia: overview [Internet]. The World Bank; 2020 [cited 2021 Jan 3]. Available from: <https://www.worldbank.org/en/country/indonesia/overview#1>
5. Wahidayat I, Wahidayat PA. Genetic problems at present and their challenges in the future: thalassaemia as a model. *Paediatr Indones* 2006;46(5):189-94. doi: 10.14238/pi46.5.2006.189-94
6. Wahidiyat PA, Sari TT, Rahmartani LD, et al. An insight into Indonesian current thalassaemia care and challenges. *ISBT Sci Ser* 2020:334-41. doi: 10.1111/voxs.12544
7. Betts M, Flight PA, Paramore LC, et al. Systematic literature review of the burden of disease and treatment for transfusion-dependent  $\beta$ -thalassaemia. *Clin Ther* 2020;42(2):322-37. doi: 10.1016/j.clinthera.2019.12.003
8. Gharaibeh H, Barqawi MA. Clinical burdens of  $\beta$ -thalassaemia major in affected children. *J Pediatr Hematol Oncol* 2018;40(3):182-7. doi: 10.1097/MPH.0000000000001104
9. Khoury B, Musallam KM, Abi-habib R, et al. Prevalence of depression and anxiety in adult patients with  $\beta$ -thalassaemia major and intermedia. *Int J Psychiatry Med* 2012;44(4):291-303. doi: 10.2190/PM.44.4.a
10. Ghanizadeh A, Khajavian S, Ashkani H. Prevalence of psychiatric disorders, depression, and suicidal behavior in child and adolescent with thalassaemia major. *J Pediatr Hematol Oncol* 2006;28:781-4. doi: 10.1097/01.mph.0000243665.79303.9e
11. Scalone L, Mantovani LG, Krol M, et al. Costs, quality of life, treatment satisfaction and compliance in patients with beta-thalassaemia major undergoing iron chelation therapy: the ITHACA study. *Curr Med Res Opin* 2008 Jul;24(7):1905-17. doi: 10.1185/03007990802160834
12. Hongally C, Benakappa AD, Reena S. Study of behavioral problems in multi-transfused thalassaemic children. *Indian J Psychiatry* 2012;54(4):333-6. doi: 10.4103/0019-5545.104819
13. Clemente C, Tsiantis J, Kolvin I, et al. Social adjustment in three cultures: data from families affected by chronic blood disorders. a sibling study. *Haemophilia* 2003;9(3):317-24. doi: 10.1046/j.1365-2516.2003.00768.x
14. Khurana A, Katyal S, Marwaha RK. Psychosocial burden in thalassaemia. *Indian J Pediatr* 2006 Oct;73(10):877-80. doi: 10.1007/BF02859278
15. Paramore C, Levine L, Bagshaw E, et al. Patient- and caregiver-reported burden of transfusion-dependent  $\beta$ -thalassaemia measured using a digital application. *Patient* 2020 Oct 30:1-12. doi: 10.1007/s40271-020-00473-0
16. Cousens NE, Gaff CL, Metcalfe SA, et al. Carrier screening for beta-thalassaemia: a review of international practice. *Eur J Hum Genet* 2010 Oct;18(10):1077-83. doi: 10.1038/ejhg.2010.90
17. Bozkurt G. Results from the North Cyprus thalassaemia prevention program. *Hemoglobin* 2007;31:257-64. doi: 10.1080/03630260701297204

18. Fucharoen S, Winichagoon P. Haemoglobinopathies in southeast Asia. *Indian J Med Res* 2011 Oct;134(4):498-506.
19. Ministry of Health Republic of Indonesia. Talasemia, penyakit berbiaya tertinggi ke-5 di Indonesia. Jakarta: Ministry of Health Republic of Indonesia; 2019 May 20 [cited 2021 Jan 24]. Available from: <https://www.kemkes.go.id/article/view/19052100001/-talasemia-penyakit-berbiaya-tinggi-ke-5-di-indonesia.html>
20. Utami ST, Kusumaningrum NSD. Knowledge of premarital couples regarding premarital screening thalassemia. *Jurnal Keperawatan* 2020;11(2). doi: 10.22219/jk.v11i2.10740
21. Samavat A, Modell B. Iranian national thalassemia screening programme. *BMJ* 2004;329:1134-7. doi: 10.1136/bmj.329.7475.1134
22. Armeli C, Robbins SJ, Eunpu D. Comparing knowledge of  $\beta$ -thalassemia in samples of Italians, Italian-Americans, and non-Italian-Americans. *J Genet Couns* 2005;14(5):365-76. doi: 10.1007/s10897-005-1123-5
23. Chawla S, Singh RK, Lakkakula BV, et al. Attitudes and beliefs among high- and low-risk population groups towards  $\beta$ -thalassemia prevention: a cross-sectional descriptive study from India. *J Community Genet* 2007;8:159-66. doi: 10.1007/s12687-017-0298-4
24. Maheen H, Malik F, Siddique B, et al. Assessing parental knowledge about thalassemia in a thalassemia center of Karachi, Pakistan. *J Genet Counsel* 2015;24:945-51. doi: 10.1007/s10897-015-9830-z
25. Lee YL, Lin DT, Tsai SF. Disease knowledge and treatment adherence among patients with thalassemia major and their mothers in Taiwan. *J Clin Nurs* 2009 Feb;18(4):529-38. doi: 10.1111/j.1365-2702.2007.02150.x
26. Indonesia population [Internet]. Worldometer; 2020 [cited 2021 Jan 3]. Available from: <https://www.worldometers.info/world-population/indonesia-population/>.
27. Adioetomo SM, Posselt H, Utomo A. Youth in Indonesia. Jakarta: United Nations Population Fund; 2014.
28. Youth. United Nations; 2021 [cited 2021 Jan 3]. Available from: <https://www.un.org/en/sections/issues-depth/youth-0/>.
29. Kaliyaperumal K. Guideline for conducting a knowledge, attitude and practice (KAP) study. *Community Ophthalmol* 2004;4:8-9.
30. Olum R, Chekwech G, Wekha G, et al. Coronavirus disease-2019: knowledge, attitude, and practices of health care workers at Makerere University Teaching Hospitals, Uganda. *Front Public Health* 2020;8. Available from: <https://www.frontiersin.org/articles/10.3389/fpubh.2020.00181/full>. doi: 10.3389/fpubh.2020.00181
31. Seid MA, Hussen MS. Knowledge and attitude towards antimicrobial resistance among final year undergraduate paramedical students at University of Gondar, Ethiopia. *BMC Infectious Dis* 2018 Dec;18(1):312. doi: 10.1186/s12879-018-3199-1
32. Okello G, Izudi J, Teguzirigwa S, et al. Findings of a cross-sectional survey on knowledge, attitudes, and practices about COVID-19 in Uganda: implications for public health prevention and control measures. Jiang W, editor. *Biomed Res Int* 2020 Dec;2020:5917378. doi: 10.1155/2020/5917378
33. Bharathi N, Karthikayan S, Ramakritinan CM. KAP study on dengue epidemiology among paramedical students. *Int J Fauna Biol* 2015;2(2):62-64.

34. Basheer R, Bhargavi PG, Prakash HP. Knowledge, attitude, and practice of printing press workers towards noise-induced hearing loss. *Noise Health* 2019;21(99):62–8. doi: 10.4103/nah.NAH\_9\_19
35. Wan Rozita WM, Yap BW, Veronica S, et al. Knowledge, attitude and practice (KAP) survey on dengue fever in an urban Malay residential area in Kuala Lumpur. *Malaysian Journal of Public Health Medicine* 2006;6(2):62-7.
36. Hidayati NI, Wijayanti N, Handayani NSN. Detection of HBB:c.92+5G>C and HBB:c.108delC mutations in  $\beta$ -thalassemia carriers using high-resolution melting analysis. *Mol Biol Rep* 2020;47(7):5665-71. doi: 10.1007/s11033-020-05625-x
37. Sari TT, Gatot D, Akib AA, et al. Immune response of thalassemia major patients in Indonesia with and without splenectomy. *Acta Med Indones* 2014;46(3):217-25.
38. Rujito L, Basalamah M, Siswandari W, et al. Modifying effect of XmnI, BCL11A, and HBS1L-MYB on clinical appearances: A study on  $\beta$ -thalassemia and hemoglobin E/ $\beta$ -thalassemia patients in Indonesia. *Hematol Oncol Stem Cell Ther* 2016;9(2):55-63. doi: 10.1016/j.hemonc.2016.02.003.
39. Wulandari RD, Lyrawati D, Fatchiyah F, et al. Thalassemia major and intermedia patients in East Java do not show fetal hemoglobin level difference in relation to XMNI polymorphism. *Med Arch* 2020;74(2):90-4. doi:10.5455/medarh.2020.74.90-94
40. Universal access to reproductive health services: an unfinished business. Jakarta: UNFPA; 2012.
41. Tursinawati Y, Fuad W. Pengetahuan pengaruhi sikap dan tindakan mahasiswa terhadap program pencegahan thalassemia di Indonesia. *Higeia Journal of Public Health Research and Development* 2018:654-62. doi:10.5455/medarh.2020.74.90-94
42. Gharaati F, Aghamolaei T, Hosseini Z, et al. Effect of a mobile-phone mediated based education on self-care behaviors of patients With thalassemia major. *J Caring Sci* 2019;8(3):149-55. doi:10.15171/jcs.2019.022
43. Peters RM, Dadun, Lusli M, et al. The meaning of leprosy and everyday experiences: an exploration in Cirebon, Indonesia. *J Trop Med* 2013;2013:507034. doi: 10.1155/2013/507034
44. Denic S, Aden B, Nagelkerke N, et al. beta-Thalassemia in Abu Dhabi: consanguinity and tribal stratification are major factors explaining the high prevalence of the disease. *Hemoglobin* 2013;37(4):351-8. doi:10.3109/03630269.2013.790827
45. Suyanto B, Hidayat MA, Sugihartati R, et al. Incestuous abuse of Indonesian girls: An exploratory study of media coverage. *Children and Youth Services Review* 2019;96:364-71. doi: 10.1016/j.childyouth.2018.11.034
46. Setiawan D, Farihatun A, Nurmalasari A. Skrining Talasemia Beta Minor pada Pelajar SMK di Kecamatan Ciamis. *Jurnal Kesehatan Vokasional* 2020;5(3). doi: 10.22146/jkesvo.57621
47. Sotianingsih, Charles A, Ita M. Skrining thalassemia pada suku anak dalam di provinsi Jambi. *Jambi Medical Journal* 2018 Nov;6(2):159-64. doi: 10.22437/jmj.v6i2.5946
48. Husna N, Arif AA, Putri C, et al. Prevalence and distribution of thalassemia trait screening. *Journal of the Medical Sciences (Berkala Ilmu Kedokteran)* 2017;49(03):106-13. doi: 10.19106/JMedSci004903201702
49. Aiyumnah P, Ghozali M, Dalimoenthe NZ. Skrining thalassemia beta minor pada siswa SMA di Jatinangor. *Jurnal Sistem Kesehatan* 2016;1(3):133-8. doi: 10.24198/jsk.v1i3.10358
50. Ganie RA. Distribusi pembawa sifat thalassemia ( $\alpha$  &  $\beta$ ) dan hemoglobin-e pada penduduk Medan. *Majalah Kedokteran Nusantara* 2008 Jun;41(2):117-22.