

1 **Immunoglobulin G glycome composition in transition from pre-menopause to menopause**

2

3 Domagoj Kifer¹, Helena Deriš², Ana Cindrić², Tea Petrović², Ana Cvetko¹, Irena Trbojević-
4 Akmačić², Louise Newson³, Tim Spector⁴, Cristina Menni⁴, and Gordan Lauc^{1,2}

5

6

7 ¹Faculty of Pharmacy and Biochemistry, University of Zagreb, Zagreb 10000, Croatia

8 ²Genos Glycoscience Research Laboratory, Zagreb 10000, Croatia

9 ³Newson Health Menopause & Wellbeing Centre, Church Street Stratford-Upon-Avon

10 CV37 6HB, UK

11 ⁴Department of Twin Research and Genetic Epidemiology, King's College London,

12 Westminster Bridge Road, SE17EH London, UK

13

14

15

16 **Abstract**

17 Background

18 Glycosylation of immunoglobulin G (IgG) is an important regulator of the immune system
19 and its changes are believed to be a significant contributor to inflammaging. Gonadal
20 hormones affect IgG glycome composition, suggesting that alterations in IgG glycosylation
21 might be one of the molecular mechanisms behind increased disease risk in perimenopause.

22 Methods

23 IgG was isolated from 5,354 plasma samples collected from 1,940 females and 113 males at
24 multiple time points. IgG glycans were released, labelled with a fluorescent dye and
25 analysed by ultra-high-performance liquid chromatography. Mixed modelling was used to
26 determine average levels of individual IgG glycans in pre-menopausal women, menopausal
27 women, and men.

28 Findings

29 Large and statistically significant differences in IgG glycome composition were observed,
30 mainly reflecting decreased galactosylation and sialylation of glycans in menopausal
31 women. During perimenopause women had a significant higher rate of increase in
32 agalactosylated structures (0.051/yr; 95%CI = 0.043 - 0.059, $p < 0.001$), and decrease in
33 digalactosylated (-0.043/yr; 95%CI = -0.050 – -0.037, $p < 0.001$), and monosialylated glycans (-
34 0.029/yr; 95%CI = -0.034 – -0.024, $p < 0.001$), compared to premenopausal women.

35 Interpretation

36 Proinflammatory IgG glycome and the resulting decrease in the ability of IgG to suppress
37 low-grade chronic inflammation may be an important molecular mechanism mediating the
38 increased health risk in perimenopause. IgG glycome changes considerably during
39 perimenopause and may aid the diagnosis of perimenopause.

40 Funding

41 Croatian National Centre of Excellence in Personalised Healthcare, ESI Funds grant for the
42 Centre of Competences in Molecular Diagnostics, the Wellcome Trust and the Medical
43 Research Council (MRC)/British Heart Foundation (BHF).

44

45 **Introduction**

46 Glycosylation of immunoglobulin G (IgG) is an important regulator of the immune system ¹.
47 In addition to directly affecting the effector functions of IgG by promoting its binding to
48 different Fc receptors ², glycans attached to IgG have numerous other roles in the regulation
49 of the immune system ^{3,4}. Glycans are also important mediators of the anti-inflammatory
50 activity of IgG ^{5,6} as well as the driving force for one of the molecular mechanisms underlying
51 immunosuppressive activity of intravenous IgG (IVIG) therapy used to treat a variety of
52 immunological disorders ⁷. Changes in IgG glycosylation are also believed to be an important
53 contributor to aging at the molecular level through a process called inflammaging ⁸.

54 IgG glycome composition is tightly regulated and, despite the absence of a direct genetic
55 template, is heritable to a significant extent ^{9,10}. Alternative glycosylation (the attachment of
56 different glycan structures to the same glycosylation site) is structurally and functionally
57 analogous to coding mutations, but instead of being defined by sequence variation in
58 individual genes, glycome composition is inherited as a complex trait encoded by multiple
59 genes ¹¹. Genome-wide association studies identified a network of over 30 genes that
60 associate with the IgG glycome composition ¹²⁻¹⁴. One of the regulators of IgG glycosylation
61 are sex hormones, and the association between estradiol and the IgG glycome composition
62 was confirmed to be causal ¹⁵. Recent randomised placebo-controlled clinical study
63 demonstrated that the deprivation of gonadal hormones resulted in an increase of
64 biological age measured by IgG glycans, which was completely prevented by estradiol
65 supplementation ¹⁶.

66 Large population studies revealed that IgG glycome composition changes with age and that
67 in females this change is particularly pronounced in the time preceding the average age of
68 menopause ^{17,18}. However, the association between changes in the IgG glycome
69 composition and menopause has not yet been validated. Perimenopause is accompanied by
70 different symptoms and is very often misdiagnosed due to changing hormone levels and
71 symptom overlap with other conditions. Menopause associates with an increased risk of
72 developing a range of diseases affecting metabolism, bones, cardiovascular system, brain,
73 even cancer ¹⁹. Early perimenopause diagnosis would enable timely interventions to ease
74 the symptoms, decrease risks of developing accompanying diseases, and timely monitoring
75 of any changes in women's health status due to hormonal changes. To fill this knowledge
76 gap and explore the association of IgG glycome changes with perimenopause, we analysed
77 IgG N-glycome composition in 5,080 samples from 1,940 females in multiple time points
78 during their transition from pre-menopause to menopause, along with 274 samples from
79 113 males as an additional control.

80

81

82 **Methods**

83 Study population

84 Study subjects were individuals enrolled in the TwinsUK registry, a national register of adult
85 twins recruited as volunteers without selecting for any particular disease or traits²⁰. Data on
86 menopause was gathered through the multiple choice questionnaire asking women at each
87 visit: “What is your menopausal status?” with possible answers “Pre menopausal”, “Going
88 through the menopause”, “Post menopausal” and “Don’t know” and “How old were you
89 when you became post-menopausal (when you stopped having periods for one year or
90 more)?”. Consequently sample was defined as menopausal if questionar resulted with
91 “Post-menopausal” answer or age larger then reported age of becoming postmenopausal.
92 Similarly sample was defined as premenopausal if questionnaire resulted with “Pre
93 menopausa” answer of age at sampleing was less then reported age of becoming
94 postmenopausal reduced by 1 year. Any inconsistent (i.e. “Pre menopausal” answer at age
95 after becoming menopausal) or unreliable data (i.e. answered as “Going through the
96 menopause”) were dropped from the study (Supplementary Table 1). The TwinsUK study
97 was approved by NRES Committee London–Westminster, and all twins provided informed
98 written consent.

99

100 Isolation of IgG

101 IgG isolation from serum samples was performed on protein G monolithic 96-well plates as
102 previously described²¹. In brief, 100 µL of serum was diluted 1:7 (v/v) with PBS (phosphate
103 buffer saline) followed by filtration on a 0.45 µm GHP filter plate (Pall Corporation, USA).
104 Diluted and filtered serum samples were then transferred to the protein G monolithic plate,
105 which was then washed. Elution of IgG was performed with 1 mL of 0.1 mol/L formic acid
106 (Merck, Germany) followed by immediate neutralization of the mixture with ammonium
107 bicarbonate (Acros Organics, USA) to pH 7.0. IgG-containing eluate was aliquoted into PCR
108 plate (average mass of 15 µg of IgG per sample) and dried in a vacuum centrifuge.

109

110 Deglycosylation, labelling and purification of IgG N-glycans

111 Deglycosylation, RapiFluor-MS labelling and purification of IgG N-glycans were performed
112 using the GlycoWorks RapiFluor-MS N-Glycan Kit obtained from Waters Corporation (USA).
113 The entire procedure was done following Waters’ protocol (Waters Corporation 2017,
114 <https://www.waters.com/webassets/cms/support/docs/715004793en.pdf>). In the end, the
115 samples of released and labelled IgG glycans were stored at -20 °C until further use.

116

117 HILIC-UHPLC-FLR analysis of RapiFluor-MS labelled IgG N-glycans

118 RapiFluor-MS labelled IgG N-glycans were analysed using ultra-high-performance liquid
119 chromatography based on hydrophilic interactions with fluorescence detection (HILIC-
120 UHPLC-FLR) on Waters Acquity UPLC H-class instruments. The instruments were controlled
121 and monitored with the Empower 3 software, build 3471 (Waters, USA). Chromatographic
122 separation of glycan structures was performed on Waters UPLC Glycan bridged ethylene
123 hybrid (BEH) Amide chromatographic columns (130 Å, 1.7 µm BEH particles, 2.1x100 mm).
124 Solvent A was 50 mmol/L ammonium formate, pH 4.4, while solvent B was 100% LC-MS
125 grade acetonitrile. A linear gradient of 75–61.5 % acetonitrile (v/v) was used at a flow rate
126 of 0.4 mL/min over 30 minutes in a 42-minute analytical run. Each chromatogram was
127 separated into 22 glycan peaks containing IgG glycan structures (**Supplementary Figure 1.**),
128 by automated integration²² resulting in relative quantification of IgG N-glycans (total area

129 normalization). Specific N-glycan structures found in each glycan peak according to Keser et
130 al.²³ are presented in **Supplementary Table 2**. Formulas used for the calculation of IgG
131 derived traits are presented in **Supplementary Table 3**.

132

133 *Statistical analysis*

134 After UHPLC analysis, each measured glycan peak was normalized by total chromatogram
135 area. Observed relative glycan abundances were log transformed and batch corrected using
136 ComBat method (R package 'sva'²⁴). After batch correction, values were back-transformed
137 to relative abundance and derived traits were calculated according to **Supplementary Table**
138 **3**.

139 Overlapping measured N-glycomes and information available on menopause found in
140 TwinsUK register, resulted in 5354 samples from 1940 females and 113 males.

141 For each glycan trait the effect of menopause on the abundance was estimated by mixed
142 modelling (R package 'lme4'²⁵). Logit transformed relative abundance was used as
143 dependent variable and sex, menopausal status (nested within sex), age and age-
144 menopausal status interaction as fixed factors, as well as family ID and individual ID (nested
145 within family ID) as random intercepts and age as random slope. Using model, mean values
146 were estimated for each group and pairwise compared using t-test (post-hoc) (R package
147 'emmeans'²⁶). Given multiple testing for large number of glycans, the control of false
148 discovery rate (FDR) was done by adjusting p values according to Benjamini-Hochberg's
149 method.

150 For the analysis of the rate of change of glycan abundances, average yearly changes were
151 calculated from two timepoints according to the formula: $\text{rate} = (\text{logit}(\text{glycan}_2) - \text{logit}(\text{glycan}_1)) / (\text{age}_2 - \text{age}_1)$, where glycan is relative abundance resulted from normalized
152 chromatogram, and age is represented in years, assuming $\text{age}_2 > \text{age}_1$. Depending on
153 menopausal status in the first and second timepoint measurements were classified into
154 three categories: premenopausal (both timepoints before menopause), perimenopausal
155 (first timepoint before, and second in the menopause), and menopausal (both timepoints in
156 menopause). Mean rates were estimated by the mixed model, in which rate was dependent
157 variable, and sex, menopausal group (nested within menopausal status) and mean age
158 (calculated as $(\text{age}_2 + \text{age}_1) / 2$) were set as fixed factors, as well as family ID and individual ID
159 (nested within family ID) as random intercepts. Estimated mean rates for each menopausal
160 group and males were pairwise compared using t-test (post-hoc). FDR control was done by
161 adjusting p values according to Benjamini-Hochberg's method.
162

163 N-glycome (observed in one timepoint) potential for diagnosis of perimenopause was
164 analysed in a subset of women aged between 45 and 55 years by logistic regression with L1
165 regularization technique (R package 'caret' and 'glmnet'^{27,28}). The subset was split into
166 training (randomly chosen one measurement per family) and test (everything else) subset.
167 The logistic model was defined with menopausal status (TRUE/FALSE) as the dependent
168 variable, and age and all directly measured glycans as independent variables. To avoid
169 overfitting, coefficients of the logistic model were estimated by 10-fold cross validation on
170 training subset data, with hyperparameter lambda set to λ_{min} . The model was tested
171 on test subset; results are presented by receiver operating characteristic (ROC) curve. In
172 parallel, the null model was fitted in the same way but using only age as a predictor.
173 Observed ROC curves of the two models were compared by a bootstrap test (B = 2000) (R
174 package 'pROC'²⁹).

175 The rate of N-glycome change (based on two timepoints) potential for diagnosis of
176 perimenopause was analysed in a subset of women with median two-timepoint age
177 between 45 and 55 years in the same way as diagnosis of menopause with IgG glycome
178 analysed in one timepoint. The perimenopausal category was defined as TRUE, while others
179 (menopausal and premenopausal) were defined as FALSE. All statistical analyses were done
180 using R³⁰.

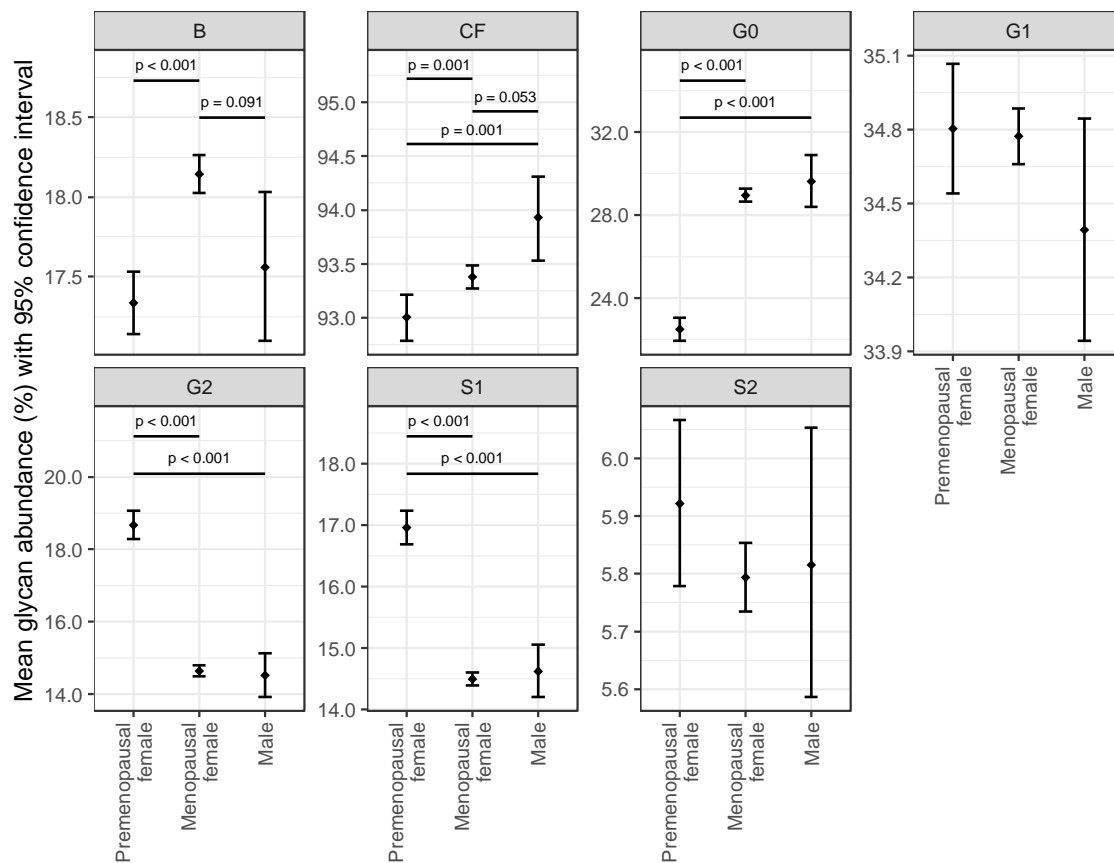
181

182

183

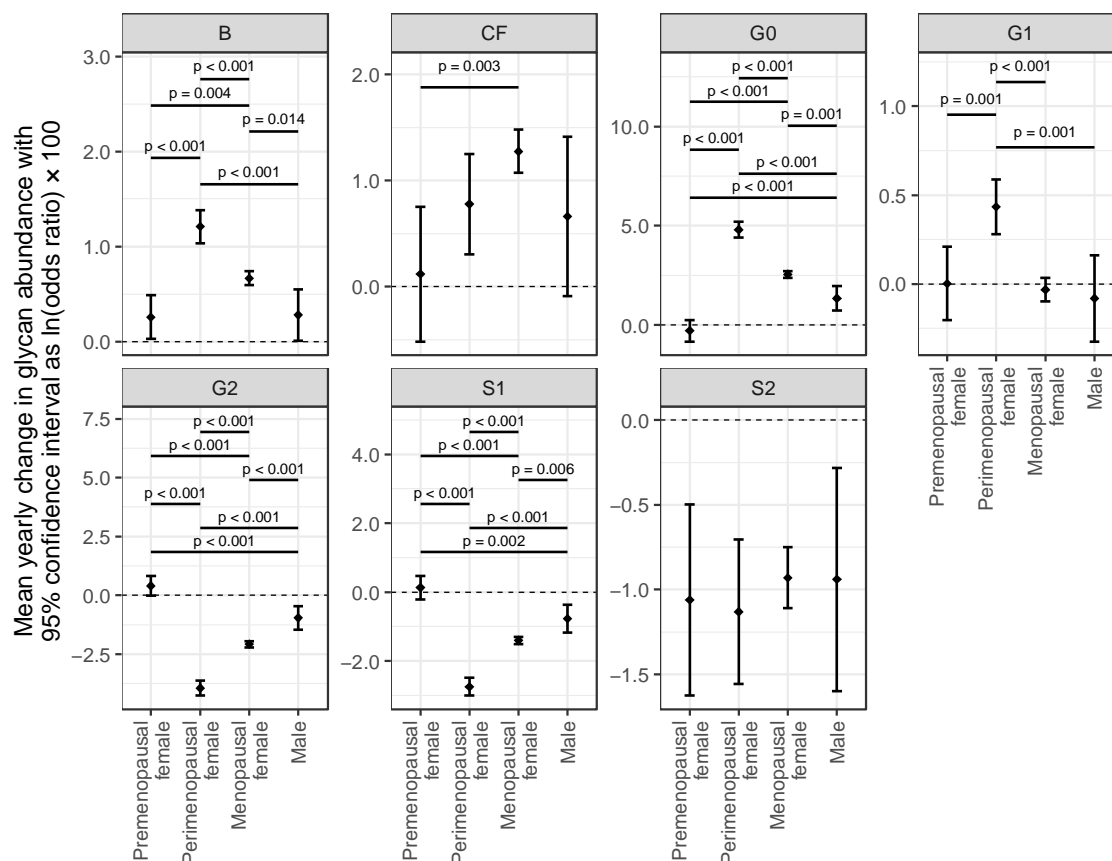
184 **Results**

185 IgG glycome composition was analysed in multiple samples from 1,940 females and 113
 186 males from the UK registry of adult twins. The 1,087 samples from 732 individual twins (500
 187 families) were collected prior to the onset of menopause, while 3,993 samples from 1,678
 188 individual twins (969 families) were collected after the onset of menopause (Supplementary
 189 Table 1). Additionally, IgG glycome was analysed in 113 men (274 samples) as an additional
 190 control. A representative chromatogram with detailed structures of individual IgG glycans is
 191 shown in Supplementary Figure 1. Mixed modelling was used to determine average levels of
 192 individual IgG glycans in pre-menopausal women, menopausal women, and men. Large and
 193 statistically significant differences were observed in multiple glycans, mainly reflecting
 194 decreased galactosylation and sialylation of glycans in menopausal women (Figure 1). Levels
 195 of individual IgG glycans are available in Supplementary Figure 2.
 196



197
 198 Figure 1. IgG glycome composition in premenopausal women, menopausal women, and
 199 men. Mean glycan abundances (% of total IgG glycome) and corresponding 95% confidence
 200 intervals were estimated from fitted mixed model with logit transformed glycan as
 201 dependent variable and sex, menopausal status (nested within sex), age and age-
 202 menopausal status interaction as fixed factors, as well as family ID and individual ID (nested
 203 within family ID) as random intercepts and age as random slope. Only adjusted post-hoc p
 204 values less than 0.1 are shown. B - bisecting N-acetylglucosamine (GlcNAc), CF - core fucose,
 205 G0 - agalactosylated glycans, G1 - monogalactosylated glycans, G2 - digalactosylated
 206 glycans, S1 - monosialylated glycans, and S2 - disialylated glycans.
 207

208 It is known that IgG galactosylation and sialylation decrease with age¹⁷ thus we attempted
 209 to evaluate whether the changes in glycans associated with the transition to menopause
 210 were more extensive than the age-related changes. Since we had multiple samples from the
 211 same individual, we were able to calculate the rate of change of individual IgG glycans
 212 through time. A subset of women in our cohort (n = 379) entered menopause between two
 213 sampling time points, thus for them, we were also able to calculate the rate of changes in
 214 individual IgG glycans during the perimenopausal period. The comparison of the rate of age-
 215 related IgG glycome changes (when there was no change of the menopause status) with the
 216 rate of IgG glycome changes during perimenopause (i.e., between time points when the
 217 transition to menopause occurred) revealed statistically significant differences for a number
 218 of glycans (Supplementary Figure 3). The most prominent differences in the perimenopause
 219 period were the significantly larger rates of increase in the agalactosylated structures (G0)
 220 and the decrease of digalactosylated (G2) and monosialylated (S1) glycans (Figure 2). During
 221 perimenopause women had a significant higher rate of increase in agalactosylated
 222 structures (0.051/yr; 95%CI = 0.043 - 0.059, p<0.001), and decrease in digalactosylated (-
 223 0.043/yr; 95%CI = -0.050 - -0.037, p<0.001), and monosialylated glycans (-0.029/yr; 95%CI =
 224 -0.034 - -0.024, p<0.001), compared to premenopausal women.
 225



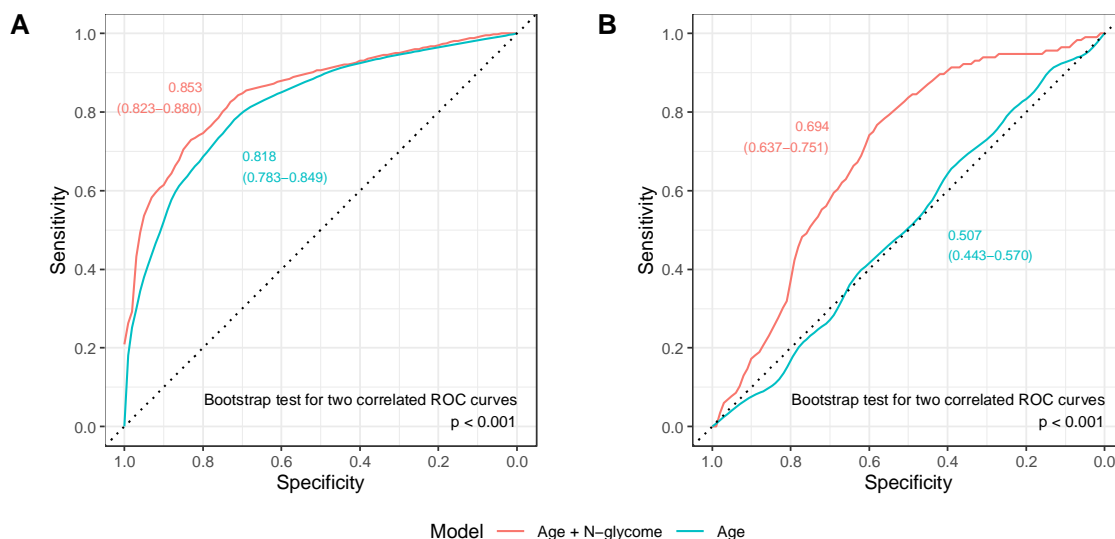
226
 227 Figure 2. Average yearly change of IgG glycans in females during the perimenopause period,
 228 females in pre- or post-menopause, and males. Mean yearly change in IgG glycan
 229 abundances and corresponding 95% confidence intervals were estimated from fitted mixed
 230 model with logit transformed glycan as dependent variable and sex, menopausal status
 231 (nested within sex), age and age-menopausal status interaction as fixed factors, as well as

232 family ID and individual ID (nested within family ID) as random intercepts and age as
233 random slope. Only adjusted post-hoc p values less than 0.1 are shown. B - bisecting
234 GlcNAc, CF - core fucose, G0 - agalactosylated glycans, G1 - monogalactosylated glycans, G2
235 - digalactosylated glycans, S1 - monosialylated glycans, and S2 - disialylated glycans.

236 Using single-point measurements of IgG N-glycans we attempted to predict menopause
237 status. The lasso model was fitted with menopausal status (TRUE for those who entered
238 menopause and FALSE for all others) as dependent variable and age and all directly
239 measured IgG glycans as predictors. The model was fitted on a randomly chosen one twin
240 per family (training set) in the subset of women with a two-timepoint median age between
241 45 and 55 years. The remaining twins were used for testing the fitted model. The same train
242 and test subset model with only mean age as a predictor were used to fit and test the model
243 for comparison (Figure 3A). IgG N-glycome in combination with age measured in a single
244 timepoint has shown a good classification performance, with the AUC of 0.853 (95% CI
245 0.823-0.880) outperforming only age as a predictor of perimenopause (AUC of 0.818, 95% CI
246 0.783-0.849).

247 Since changes in the IgG glycome composition were the most prominent in the period of
248 perimenopause, we used the rate of changes in glycans to predict whether a given women
249 already entered the period of perimenopause, or not (Figure 3B). The model was fitted on a
250 randomly chosen one twin per family (training set) in the subset of women with a two-
251 timepoint median age between 45 and 55 years. The remaining twins were used for testing
252 the fitted model. The addition of the information about changes in the IgG glycan levels to a
253 prediction model notably increases AUC value compared to using only age (0.694, 95% CI
254 0.637-0.751 compared to 0.507, 95% CI 0.443-0.570, respectively).

255
256



257
258
259

260 Figure 3. . Receiver operating characteristic (ROC) curves for the prediction of
261 perimenopause using IgG glycans measured in a single time point (A) and the change in IgG
262 glycan levels between the two timepoints (B). Graphs are showing area under the curve
263 (AUC) values with 95% confidence intervals.

264

265 Discussion

266 In this study we have shown the association between the period of perimenopause and the
267 extensive changes in the IgG glycome composition. Aging continuously associates with the
268 transition of the IgG glycome from an inflammation-suppressive to a proinflammatory
269 composition, but this change is much faster in the period when women are progressing
270 from a regular cycle to menopause. The depletion of estrogen during perimenopause and
271 menopause is an important event of aging since low hormone levels increase vulnerability
272 to diseases in hormone-responsive tissues, including the brain, bone, and the cardiovascular
273 system. Menopause is therefore more complex than just being a natural condition resulting
274 in symptoms; it needs to be considered as a long-term hormone deficiency leading to health
275 risks if not appropriately managed with lifestyle adjustments or hormone replacement
276 therapy (HRT)³¹. After entering menopause, there is an increased risk of developing obesity
277 and metabolic disease, cardiovascular diseases, osteoporosis and arthritis, dementia and
278 cognitive decline, and cancer¹⁹.

279 Previous population studies revealed that IgG N-glycome composition changes with age,
280 especially in females in the time preceding the average age of menopause^{17,18}. In this study
281 we used multiple samples from the same individuals to confirm the association between
282 perimenopause and the extensive changes in the IgG glycome composition. The most
283 extensive change in the IgG glycome during perimenopause was a decrease in
284 galactosylation and sialylation, a change that is generally associated with aging¹. Aging
285 continuously associates with the transition of the IgG N-glycome from an inflammation-
286 suppressive to a proinflammatory composition, but this change is much faster in the period
287 when women are progressing from a regular cycle to menopause.

288 The age-related gradual decrease in the level of galactosylated IgG and the build-up of
289 agalactosylated IgG is known to exacerbate low-grade chronic inflammation³²⁻³⁴ and acts as
290 an effector of pro-inflammatory pathological changes^{35,36}. Decreased levels of IgG
291 galactosylation and/or sialylation have been associated with a wide range of autoimmune
292 conditions, such as systemic lupus erythematosus, inflammatory bowel disease, and many
293 others. Changes in these IgG glycosylation traits are also associated with disease
294 progression, disease activity, symptom severity, and response to treatment. In many cases,
295 these changes occur before the onset of symptoms³⁷.

296

297 The rate of change from “young” to “old” IgG glycome increased significantly in the
298 perimenopausal period, suggesting that the loss of immunosuppressive functions of IgG may
299 be an underlying molecular mediator of at least some health risks in this period. The results
300 of this study also indicate the potential of the IgG glycome composition as a biomarker for
301 perimenopause. Perimenopause can last up to 15 years and is difficult to diagnose due to
302 highly irregular hormonal cycles³⁸. As a result of poor awareness and inappropriate use of
303 hormonal tests, women are often misdiagnosed with conditions such as fibromyalgia,
304 migraines, depression, or chronic fatigue syndrome and are frequently prescribed
305 antidepressants despite there being no evidence to support their use to improve the low
306 mood associated with perimenopause or menopause³⁹. The importance of early diagnosis
307 of perimenopause is supported by the research which has shown that early use of HRT leads
308 to a greater reduction of future disease incidence as well as minimising the duration of
309 symptoms⁴⁰.

310

311 Recent placebo-controlled randomised trials indicated the importance of estrogens in the
312 regulation of IgG glycosylation^{15,41}, thus it seems quite probable that the decrease in
313 estrogen levels is an important driver of changes in IgG glycosylation in perimenopause.
314 Contrary to estrogens that have a very short half-life in circulation, IgG has a half-life of
315 three weeks⁴², which implies that the current composition of the IgG glycome is affected by
316 average concentrations of estrogen in the past 3-4 weeks. Since changes in the IgG glycome
317 during perimenopause are so extensive, they could potentially be used as a diagnostic tool.
318 In fact, IgG glycome composition could be used to determine long-term average
319 concentrations of sex hormones in the same way glycosylated hemoglobin (HbA1c) is used to
320 determine long-term concentrations of blood glucose.

321

322 ***Limitations of the study***

323 The main limitation of this study is relatively long time between individual sampling time
324 points (6.9 ± 2.6 years) that was not tailored for the occurrence of menopause. Therefore, in
325 some cases, perimenopause was just a short part of the period in which the change in the
326 IgG N-glycome occurred, while in others sampling might have occurred within the
327 perimenopause period, with part of the perimenopause being before and another part after
328 a specific sampling. Hopefully, a future study that would have more frequent sampling
329 during the perimenopause period would enable an even more accurate assessment of IgG
330 glycome association with perimenopause.

331

332 ***Conclusions***

333 Changes in IgG glycosylation from “young” to “old” glycome associate with many health
334 risks that accompany menopause¹. In some diseases like rheumatoid arthritis^{43,44} and
335 cardiovascular diseases^{45,46} this change was shown to occur years before disease onset,
336 suggesting the causal role of IgG glycans in disease development. Proinflammatory IgG
337 glycome and the resulting decrease in the ability of IgG to suppress low-grade chronic
338 inflammation may be an important molecular mechanism that mediates the increased
339 health risk in perimenopause, thus this topic should be studied in more detail.

340 **Competing interests**

341 A patent covering all the main aspects of the use of IgG glycome as a predictor of
342 menopause and perimenopause has been filed by Genos Ltd (application number:
343 P20210509A). The application is currently pending. D.K., C.M., and G.L. are named as co-
344 inventors on the patent application. G.L. is the founder and owner of Genos Ltd, a biotech
345 company specialising in high-throughput glycomics that also has several patents in the field.
346 H.D., A.Ci. T.P., and I.T.-A. are employees of Genos Ltd. The remaining authors declare no
347 competing interests.

348

349 **Acknowledgements**

350 This study has been supported by the Croatian National Centre of Excellence in Personalised
351 Healthcare (Contract no. KK.01.1.1.01.0010), ESI Funds grant for the Centre of Competences
352 in Molecular Diagnostics and the Human Glycome Project. Equipment and products from
353 Waters and New England Biolabs were used for this research. The Department of Twin
354 Research receives support from grants from the Wellcome Trust (212904/Z/18/Z) and the
355 Medical Research Council (MRC)/British Heart Foundation (BHF) Ancestry and Biological
356 Informative Markers for Stratification of Hypertension (AIM-HY; MR/M016560/1), European
357 Union, Chronic Disease Research Foundation (CDRF), Zoe Global Ltd., the NIHR Clinical
358 Research Facility and Biomedical Research Centre (based at Guy's and St Thomas' NHS
359 Foundation Trust in partnership with King's College London). C.M. is funded by the Chronic
360 Disease Research Foundation and by the MRC AIM-HY project grant.

361

362

363 References

364

- 365 1 Martinić Kavur M, Lauc G, Pezer M. Systems Glycobiology: Immunoglobulin G Glycans
366 as Biomarkers and Functional Effectors in Aging and Diseases. In: Reference Module
367 in Chemistry, Molecular Sciences and Chemical Engineering. Elsevier, 2021.
368 DOI:10.1016/b978-0-12-819475-1.00086-9.
- 369 2 Nimmerjahn F, Ravetch J V. Fcγ receptors as regulators of immune responses.
370 *Nat Rev Immunol* 2008; **8**: 34–47.
- 371 3 Seeling M, Brückner C, Nimmerjahn F. Differential antibody glycosylation in
372 autoimmunity: Sweet biomarker or modulator of disease activity? *Nat Rev Rheumatol*
373 2017; **13**: 621–30.
- 374 4 Ipsen-Escobedo A, Nimmerjahn F. More Rules, Still Exceptions: Understanding
375 Immunomodulatory Antibody Activity In Vivo. *Cancer Cell* 2018; **33**: 545–6.
- 376 5 Schwab I, Nimmerjahn F. Intravenous immunoglobulin therapy: how does IgG
377 modulate the immune system? *Nat Rev Immunol* 2013; **13**: 176–89.
- 378 6 Karsten CM, Pandey MK, Figge J, *et al.* Anti-inflammatory activity of IgG1 mediated by
379 Fc galactosylation and association of FcγRIIB and dectin-1. *Nat Med* 2012; **18**:
380 1401–6.
- 381 7 Nimmerjahn F, Ravetch J V. Anti-inflammatory actions of intravenous
382 immunoglobulin. *Annu Rev Immunol* 2008; **26**: 513–33.
- 383 8 Franceschi C, Garagnani P, Parini P, Giuliani C, Santoro A. Inflammaging: a new
384 immune–metabolic viewpoint for age-related diseases. *Nat. Rev. Endocrinol.* 2018;
385 **14**: 576–90.
- 386 9 Pučić M, Knežević A, Vidič J, *et al.* High throughput isolation and glycosylation analysis
387 of IgG-variability and heritability of the IgG glycome in three isolated human
388 populations. *Mol Cell Proteomics* 2011; **10**: M111.010090.
- 389 10 Menni C, Keser T, Mangino M, *et al.* Glycosylation of immunoglobulin G: Role of
390 genetic and epigenetic influences. *PLoS One* 2013; **8**.
391 DOI:10.1371/journal.pone.0082558.
- 392 11 Krištić J, Zaytseva OO, Ram R, *et al.* Profiling and genetic control of the murine
393 immunoglobulin G glycome. *Nat Chem Biol* 2018; **14**: 516–24.
- 394 12 Shen X, Klarić L, Sharapov S, *et al.* Multivariate discovery and replication of five novel
395 loci associated with Immunoglobulin G N-glycosylation. *Nat Commun* 2017; **8**.
396 DOI:10.1038/s41467-017-00453-3.
- 397 13 Klaric L, Tsepilov YA, Stanton CM, *et al.* Glycosylation of immunoglobulin G is
398 regulated by a large network of genes pleiotropic with inflammatory diseases. *Sci Adv*
399 2020; **6**. DOI:10.1126/sciadv.aax0301.
- 400 14 Lauc G, Huffman JE, Pučić M, *et al.* Loci Associated with N-Glycosylation of Human
401 Immunoglobulin G Show Pleiotropy with Autoimmune Diseases and Haematological
402 Cancers. *PLoS Genet* 2013; **9**. DOI:10.1371/journal.pgen.1003225.
- 403 15 Ercan A, Kohrt WM, Cui J, *et al.* Estrogens regulate glycosylation of IgG in women and
404 men. *JCI Insight* 2017; **2**. DOI:10.1172/jci.insight.89703.
- 405 16 Juric J, Kohrt WM, Kifer D, *et al.* Effects of estradiol on biological age measured using
406 the glycan age index. *AGING-US* 2020; **12**: 19756–65.
- 407 17 Krištić J, Vučković F, Menni C, *et al.* Glycans are a novel biomarker of chronological
408 and biological ages. *Journals Gerontol - Ser A Biol Sci Med Sci* 2014; **69**: 779–89.
- 409 18 Stambuk J, Nakic N, Vuckovic F, *et al.* Global variability of the human IgG glycome.

- 410 *AGING-US* 2020; **12**: 15222–59.
- 411 19 Lobo RA, Davis SR, De Villiers TJ, *et al.* Prevention of diseases after menopause.
412 *Climacteric* 2014; **17**: 540–56.
- 413 20 Verdi S, Abbasian G, Bowyer RCE, *et al.* TwinsUK: The UK Adult Twin Registry Update.
414 *Twin Res Hum Genet* 2019; **22**: 523–9.
- 415 21 Trbojević-Akmačić I, Ugrina I, Lauc G. Comparative Analysis and Validation of
416 Different Steps in Glycomics Studies. *Methods Enzymol* 2017; **586**: 37–55.
- 417 22 Agakova A, Vučković F, Klarić L, Lauc G, Agakov F. Automated integration of a UPLC
418 glycomic profile. 2017 DOI:10.1007/978-1-4939-6493-2_17.
- 419 23 Keser T, Pavic T, Lauc G, Gornik O. Comparison of 2-aminobenzamide, procainamide
420 and RapiFluor-MS as derivatizing agents for high-throughput HILIC-UPLC-FLR-MS N-
421 glycan analysis. *Front Chem* 2018; **6**. DOI:10.3389/fchem.2018.00324.
- 422 24 Leek JT, Johnson WE, Parker HS, Jaffe AE, Storey JD. The sva package for removing
423 batch effects and other unwanted variation in high-throughput experiments.
424 *Bioinformatics* 2012; **28**: 882–3.
- 425 25 Bates D, Mächler M, Bolker B, Walker S. Fitting Linear Mixed-Effects Models Using
426 lme4. *J Stat Softw* 2015; **67**. DOI:10.18637/jss.v067.i01.
- 427 26 Lenth R. emmeans: Estimated Marginal Means, aka Least-Squares Means. 2020.
- 428 27 Friedman J, Hastie T, Tibshirani R. Regularization paths for generalized linear models
429 via coordinate descent. *J Stat Softw* 2010; **33**.
- 430 28 Kuhn M. caret: Classification and Regression Training. 2020.
- 431 29 Robin X, Turck N, Hainard A, *et al.* pROC: an open-source package for R and S+ to
432 analyze and compare ROC curves. *BMC Bioinformatics* 2011; **12**: 77.
- 433 30 R Core Team, Team RDC, R Core Team. R: A Language and Environment for Statistical
434 Computing. 2020.
- 435 31 Gambacciani M, Cagnacci A, Lello S. Hormone replacement therapy and prevention of
436 chronic conditions. *Climacteric*. 2019; **22**: 303–6.
- 437 32 Franceschi C, Bonafe M, Valensin S, *et al.* Inflamm-aging. An evolutionary perspective
438 on immunosenescence. *Ann N Y Acad Sci* 2000; **908**: 244–54.
- 439 33 De Martinis M, Franceschi C, Monti D, Ginaldi L. Inflamm-aging and lifelong antigenic
440 load as major determinants of ageing rate and longevity. *FEBS Lett* 2005; **579**: 2035–
441 9.
- 442 34 Monti D, Ostan R, Borelli V, Castellani G, Franceschi C. Inflammaging and human
443 longevity in the omics era. *Mech Ageing Dev* 2017; **165**: 129–38.
- 444 35 Franceschi C, Capri M, Monti D, *et al.* Inflammaging and anti-inflammaging: A
445 systemic perspective on aging and longevity emerged from studies in humans. *Mech*
446 *Ageing Dev* 2007; **128**: 92–105.
- 447 36 Dall’Olio F, Vanhooren V, Chen CC, Slagboom PE, Wuhrer M, Franceschi C. N-glycomic
448 biomarkers of biological aging and longevity: A link with inflammaging. *Ageing Res*
449 *Rev* 2013; **12**: 685–98.
- 450 37 Gudelj I, Lauc G, Pezer M. Immunoglobulin G glycosylation in aging and diseases. *Cell*
451 *Immunol* 2018; **333**: 65–79.
- 452 38 National Institute for Health and Care Excellence. Menopause: Diagnosis and
453 Management. *Nice* 2015.
- 454 39 Leonhardt M. Low mood and depressive symptoms during perimenopause – Should
455 General Practitioners prescribe hormone replacement therapy or antidepressants as
456 the first-line treatment? *Post Reprod Heal* 2019; **25**: 124–30.

- 457 40 Ward K, Deneris A. An Update on Menopause Management. *J. Midwifery Women's*
458 *Heal.* 2018; **63**: 168–77.
- 459 41 Jurić J, Kohrt WM, Kifer D, *et al.* Effects of estradiol on biological age measured using
460 the glycan age index. *Aging (Albany NY)* 2020; **12**: 19756–65.
- 461 42 Vidarsson G, Dekkers G, Rispens T. IgG subclasses and allotypes: From structure to
462 effector functions. *Front Immunol* 2014; **5**. DOI:10.3389/fimmu.2014.00520.
- 463 43 Gudelj I, Salo PP, Trbojević-Akmačić I, *et al.* Low galactosylation of IgG associates with
464 higher risk for future diagnosis of rheumatoid arthritis during 10 years of follow-up.
465 *Biochim Biophys Acta - Mol Basis Dis* 2018. DOI:10.1016/j.bbadis.2018.03.018.
- 466 44 Ercan A, Cui J, Chatterton DE, *et al.* Aberrant IgG galactosylation precedes disease
467 onset, correlates with disease activity, and is prevalent in autoantibodies in
468 rheumatoid arthritis. *Arthritis Rheum* 2010; **62**: 2239–48.
- 469 45 Menni C, Gudelj I, MacDonald-Dunlop E, *et al.* Glycosylation Profile of
470 Immunoglobulin G Is Cross-Sectionally Associated with Cardiovascular Disease Risk
471 Score and Subclinical Atherosclerosis in Two Independent Cohorts. *Circ Res* 2018;
472 **122**: 1555–64.
- 473 46 Wittenbecher C, Štambuk T, Kuxhaus O, *et al.* Plasma N-glycans as emerging
474 biomarkers of cardiometabolic risk: A prospective investigation in the EPIC-Potsdam
475 cohort study. *Diabetes Care* 2020; **43**: 661–8.
- 476
477
478

479 **Supplementary Tables and Figures**

480 **Supplementary Table 1.** Descriptive information about the cohort

	Samples	Individuals	Families
Count, N	5354	2053	1173
- by sex (%)			
Male	274 (5)	113 (6)	69 (6)
Female	5080 (95)	1940 (94)	1104 (94)
- by group (%)			
Pre-menopause	1087 (21)	732	500
Menopause	3993 (79)	1678	969
- by age subset (%)			
Between 45 and 55 years	1374 (26)	1065 (52)	670 (57)
- by sex (%)			
Male	87 (6)	59 (6)	39 (6)
Female	1287 (94)	1006 (94)	631 (94)
- by group (%)			
Pre-menopause	507 (39)	453	340
Menopause	780 (61)	662	458
- by number of samples (%)			
One		203 (10)	
Two		399 (19)	
Three		1451 (71)	
Age in years, mean (SD)	58.3 (11.3)	57.6 (10.3)	57.2 (10.3)
- by sex			
Male	57.9 (11.7)	57.4 (10.8)	57.4 (10.9)
Female	58.3 (11.2)	57.6 (10.3)	57.2 (10.3)
- by group			
Pre-menopause	43.1 (7.1)	44.0 (6.0)	44.6 (5.9)
Menopause	62.4 (8.2)	61.7 (6.6)	61.3 (6.7)
- by age subset			
Between 45 and 55 years	50.6 (3.1)	50.7 (2.6)	50.6 (2.6)
- by sex			
Male	50.5 (3.1)	50.6 (2.6)	50.6 (2.5)
Female	50.6 (3.1)	50.7 (2.6)	50.6 (2.6)
- by group			
Pre-menopause	48.5 (2.6)	48.5 (2.4)	48.7 (2.4)
Menopause	51.9 (2.7)	52.2 (2.3)	52.0 (2.2)
Follow up time in years, mean (SD) between consecutive samples		6.94 (2.58)	
- by sex			
Male		7.17 (2.94)	
Female		6.93 (2.56)	
total follow up time		12.2 (4.3)	
- by sex			
Male		12.1 (4.8)	
Female		12.2 (4.3)	

481

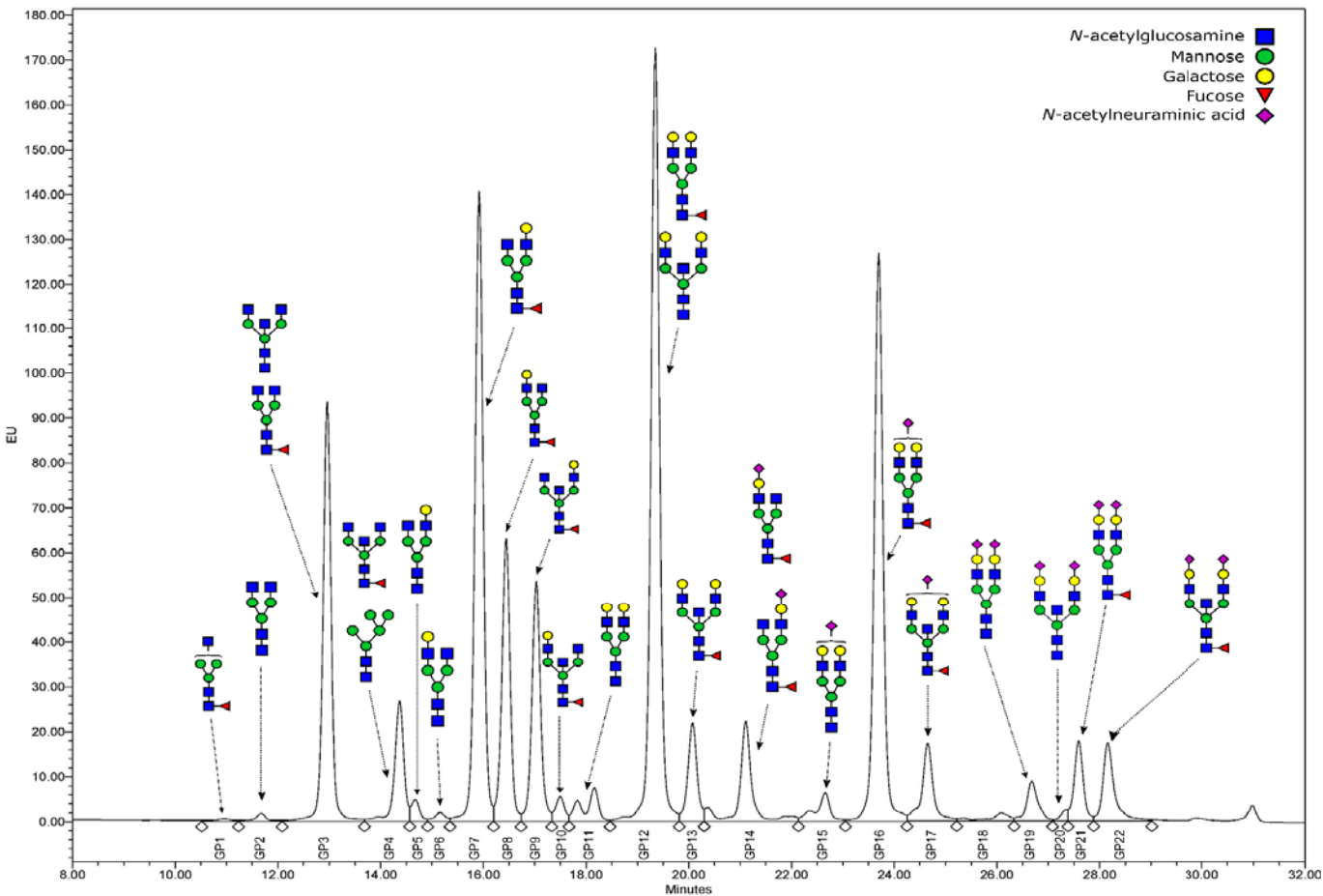
482 **Supplementary Table 2.** Detailed description of glycan structures according to Keser et al.²³
 483 corresponding to every individual immunoglobulin RapiFluor-MS glycan peak.*

RapiFluor-MS glycan peak	Glycan structure	Description	Formula
GP1	FA1	core fucosylated, monoantennary	GP1 / GP
GP2	A2	agalactosylated, biantennary	GP2 / GP
GP3	FA2; A2B	core fucosylated, biantennary (major); biantennary with bisecting GlcNAc (minor)	GP3 / GP
GP4	FA2B; M5	core fucosylated, biantennary with bisecting GlcNAc (major); oligomannose (minor)	GP4 / GP
GP5	A2[6]G1	monogalactosylated, biantennary	GP5 / GP
GP6	A2[3]G1	monogalactosylated, biantennary	GP6 / GP
GP7	FA2[6]G1	core fucosylated and monogalactosylated, biantennary	GP7 / GP
GP8	FA2[3]G1	core fucosylated and monogalactosylated, biantennary	GP8 / GP
GP9	FA2[6]BG1	core fucosylated and monogalactosylated, biantennary with bisecting GlcNAc	GP9 / GP
GP10	FA2[3]BG1	core fucosylated and monogalactosylated, biantennary with bisecting GlcNAc	GP10 / GP
GP11	A2G2	digalactosylated, biantennary	GP11 / GP
GP12	FA2G2; A2BG2	core fucosylated, digalactosylated, biantennary (major); digalactosylated, biantennary with bisecting GlcNAc (minor)	GP12 / GP
GP13	FA2BG2	core fucosylated, digalactosylated, biantennary with bisecting GlcNAc	GP13 / GP
GP14	FA2[6]G1S1; FA2[3]G1S1	core fucosylated, monogalactosylated and monosialylated biantennary; core fucosylated, monogalactosylated and monosialylated biantennary	GP14 / GP
GP15	A2G2S1	digalactosylated and monosialylated biantennary	GP15 / GP
GP16	FA2G2S1	core fucosylated, digalactosylated and monosialylated biantennary	GP16 / GP
GP17	FA2BG2S1	core fucosylated, digalactosylated and monosialylated biantennary with bisecting GlcNAc	GP17 / GP
GP18	n.d.	structure not determined	GP18 / GP
GP19	A2G2S2	digalactosylated and disialylated biantennary	GP19 / GP
GP20	A2BG2S2	digalactosylated and disialylated biantennary with bisecting GlcNAc	GP20 / GP
GP21	FA2G2S2	core fucosylated, digalactosylated and disialylated biantennary	GP21 / GP
GP22	FA2BG2S2	core fucosylated, digalactosylated and disialylated biantennary with bisecting GlcNAc	GP22 / GP

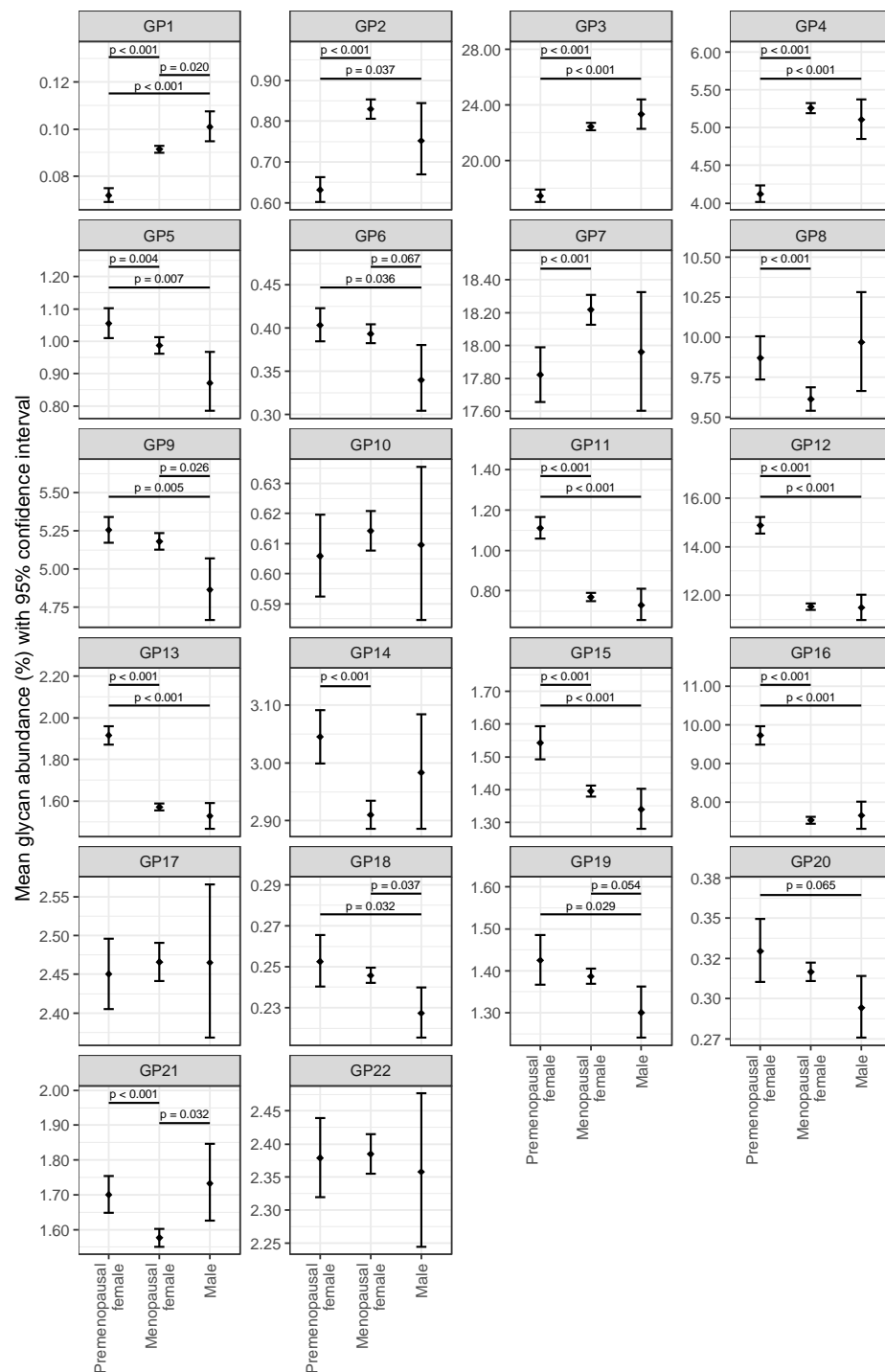
484 *structure abbreviations – all N-glycans have two core N-acetylglucosamines (GlcNAcs); F at
 485 the start of the abbreviation indicates a core-fucose α 1,6-linked to the inner GlcNAc; Mx,
 486 number (x) of mannose on core GlcNAcs; Ax, number of antenna (GlcNAc) on trimannosyl
 487 core; A2, biantennary with both GlcNAcs as β 1,2-linked; B, bisecting GlcNAc linked β 1,4 to
 488 β 1,3 mannose; G(x), number (x) of β 1,4 linked galactose on antenna; S(x), number (x) of
 489 sialic acids linked to galactose

Supplementary Table 3 Formulas used for the calculation of IgG derived traits

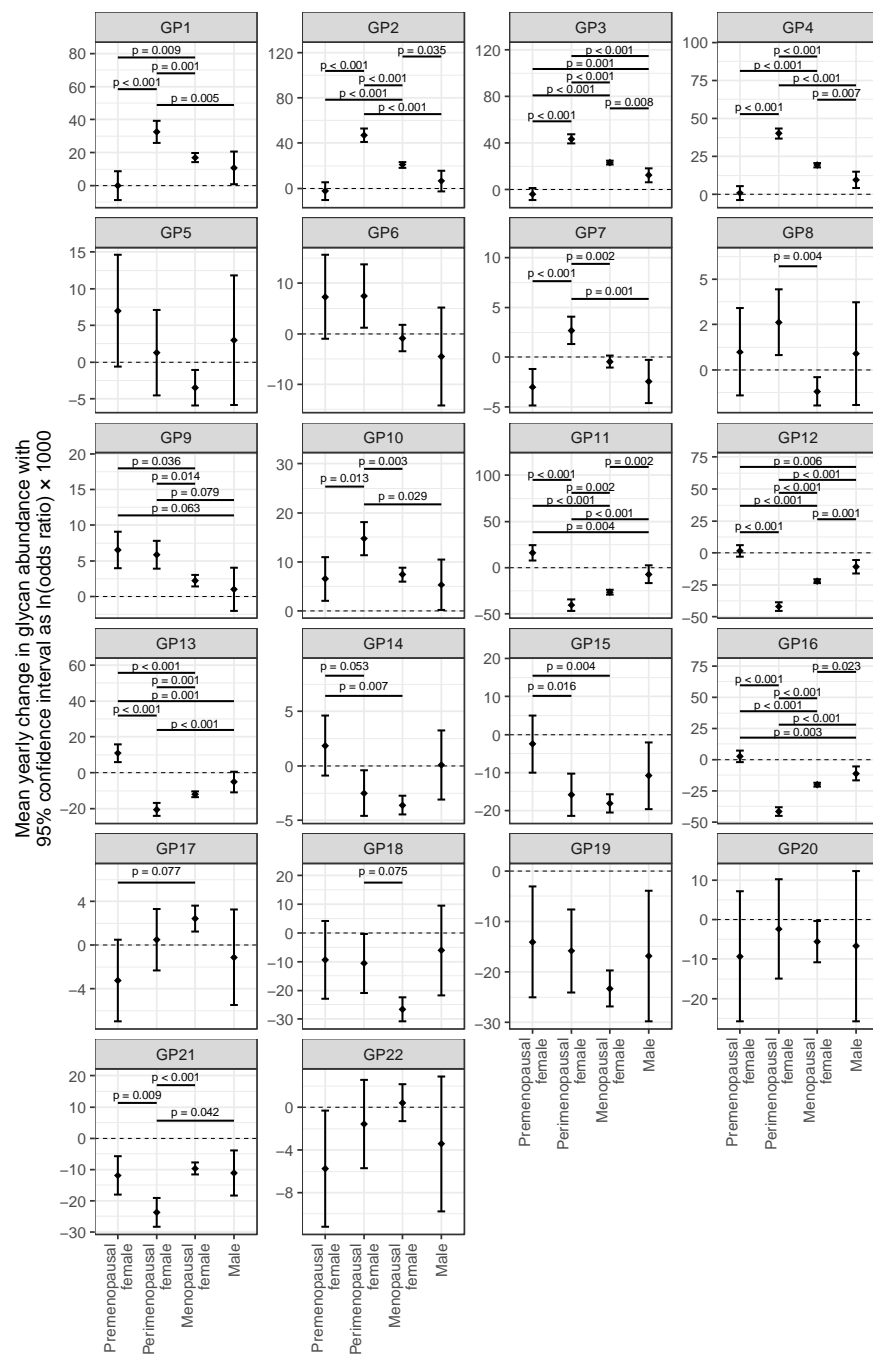
<i>Structural feature</i>	<i>Formula</i>
Agalactosylation (G0)	GP1+GP2+GP3+GP4
Monogalactosylation (G1)	GP5+GP6+GP7+GP8+GP9
Digalactosylation (G2)	GP10+GP11+GP12+GP13
Monosialylation (S1)	GP14+GP15+GP16+GP17
Disialylation (S2)	GP19+GP20+GP21+GP22
Incidence of bisecting GlcNAc (B)	GP4+GP9+GP10+GP13+GP17+GP20+GP22
Core fucosylation (CF)	GP1+GP3+GP4+GP7+GP8+GP9+GP10+GP12+GP13+GP14+GP16+GP17+GP21+GP22



Supplementary Figure 1 Representative HILIC-UPLC-FLR chromatographic profile of the immunoglobulin G RapiFluor-MS labelled N-glycome, with a graphic representation of the glycan structures corresponding to each glycan peak (GP). In case of multiple structures per GP, the upper structure is the major one, and the lower one is minor in abundance.



Supplementary Figure 2. IgG glycome composition in premenopausal and menopausal women, and men. Mean glycan abundances (% of total IgG N-glycome) and corresponding 95% confidence intervals were estimated from fitted mixed model with logit transformed glycan as dependent variable and sex, menopausal status (nested within sex), age and age-menopausal status interaction as fixed factors, as well as family ID and individual ID (nested within family ID) as random intercepts and age as random slope. Only adjusted post-hoc p values less than 0.1 are shown.



Supplementary Figure 3. Average annual change of IgG glycans in females during the perimenopause period, females in pre- or post-menopause, and males. Mean yearly change in glycan abundances and corresponding 95% confidence intervals were estimated from fitted mixed model with logit transformed glycan as dependent variable and sex, menopausal status (nested within sex), age and age-menopausal status interaction as fixed factors, as well as family ID and individual ID (nested within family ID) as random intercepts and age as random slope. Only adjusted post-hoc p values less than 0.1 are shown.

