

# **Incidence of Long-term Post-acute Sequelae of SARS-CoV-2 Infection Related to Pain and Other Symptoms: A Living Systematic Review and Meta-analysis**

Hiroshi Hoshijima, D.D.S., Ph.D.<sup>1</sup>; Takahiro Mihara, M.D., Ph.D.<sup>2</sup>; Hiroyuki Seki, M.D.,  
Ph.D.<sup>3</sup>; Shunsuke Hyuga, M.D.<sup>4</sup>; Norifumi Kuratani, M.D., Ph.D., M.P.H.<sup>5</sup>; Toshiya Shiga,  
M.D., Ph.D.<sup>6</sup>

<sup>1</sup>Division of Dento-oral Anesthesiology, Tohoku University Graduate School of Dentistry

<sup>2</sup>Department of Anesthesiology and Critical Care Medicine, Yokohama City University  
Graduate School of Medicine

<sup>3</sup>Department of Anesthesiology, Kyorin University School of Medicine

<sup>4</sup> Department of Anesthesiology, Kitasato University School of Medicine

<sup>5</sup> Department of Anesthesiology, Saitama Children's Medical Center

<sup>6</sup>Department of Anesthesiology and Pain Medicine, International University of Health and  
Welfare Ichikawa Hospital

**Corresponding Author:** Toshiya Shiga

Department of Anesthesiology and Pain Medicine, International University of Health and

**NOTE:** This preprint reports new research that has not been certified by peer review and should not be used to guide clinical practice.

Welfare Ichikawa Hospital, 6-1-14, Kounodai, Ichikawa, Chiba 272-0827, Japan

E-mail address: qzx02115@nifty.com

Tel: +81-47-375-1111

Word count: 2,210 words

## Abstract

**Importance:** Persistent symptoms are reported in patients who survive the initial stage of COVID-19, often referred to as “long COVID” or “post-acute sequelae of SARS-CoV-2 infection” (PASC); however, evidence on incidence is still lacking, and symptoms relevant to pain are yet to be assessed.

**Objective:** To determine long-term symptoms in COVID-19 survivors after infection.

**Data Sources:** A literature search was performed using the electronic databases PubMed, EMBASE, Scopus, and CHINAL and preprint servers MedRxiv and BioRxiv through January 15, 2021.

**Study Selection:** Eligible studies were those reporting patients with a confirmed diagnosis of SARS-CoV-2 and who showed any symptoms persisting beyond the acute phase.

**Data Extraction and Synthesis:** Incidence rate of symptoms were pooled using inverse variance methods with a DerSimonian-Laird random-effects model.

**Main Outcomes and Measures:** The primary outcome was pain-related symptoms such as headache or myalgia. Secondary outcomes were symptoms relevant to pain (depression or muscle weakness) and symptoms frequently reported (anosmia and dyspnea). Heterogeneity among studies and publication bias for each symptom were estimated. The source of heterogeneity was explored using meta-regression, with follow-up period, age and sex as covariates.

**Results:** In total, 35 studies including 18,711 patients were eligible. Eight pain-related symptoms and 26 other symptoms were identified. The highest pooled incidence among pain-related symptoms was chest pain (17%, 95% CI, 12%-25%), followed by headache (16%, 95% CI, 9%-27%), arthralgia (13%, 95% CI, 7%-24%), neuralgia (12%, 95% CI, 3%-38%) and abdominal pain (11%, 95% CI, 7%-16%). The highest pooled incidence among other symptoms was fatigue (45%, 95% CI, 32%-59%), followed by insomnia (26%, 95% CI, 9%-57%), dyspnea (25%, 95% CI, 15%-38%), weakness (25%, 95% CI, 8%-56%) and anosmia (19%, 95% CI, 13%-27%). Substantial heterogeneity was identified ( $I^2$ , 50-100%). Meta-regression analyses partially accounted for the source of heterogeneity, and yet, 53% of the symptoms remained unexplained.

**Conclusions and Relevance:** The current meta-analysis may provide a complete picture of incidence in PASC. It remains unclear, however, whether post-COVID symptoms progress or regress over time or to what extent PASC are associated with age or sex.

## Key Points

**Question:** What is the incidence rate of long-term post-acute sequelae of SARS-Cov-2

infection related to pain and other symptoms?

**Findings:** In the current meta-analysis of 35 studies with 18,711 patients, the highest estimated incidence among pain-related symptoms was chest pain (17%), followed by headache (16%), arthralgia (13%), neuralgia (12%) and abdominal pain (11%). That among other symptoms was fatigue (45%), followed by insomnia (26%), dyspnea (25%), weakness (25%) and anosmia (19%).

**Meaning:** These findings suggest that long-term post-acute sequelae of SARS-Cov-2 infection must not be overlooked or underestimated especially when vaccination has become the focus.

## Introduction

A broad range of symptoms have been reported to persist beyond the acute phase of SARS-CoV-2 virus infection.<sup>1-6</sup> These are referred to as “long COVID”,<sup>1,3,5,6</sup> “long-hauler”<sup>5</sup> or “Post-COVID-19 syndrome”.<sup>4,5</sup> The National Institute of Health currently advocates calling it post-acute sequelae of SARS-CoV-2 infection (PASC).<sup>7</sup> This syndrome is sometimes covered sensationally by news media or social networks, but little is known about its etiology, natural history, risk factors, or therapeutic interventions. Even more, evidence on its incidence is still lacking.

On a cellular level, the spike protein in the SARS-CoV-2 virus combines with angiotensin-converting enzyme 2 (ACE2) receptor, invades human cells, and injures multiple organs.<sup>8</sup> Central and peripheral nerve systems are one of the most susceptible targets for SARS-CoV-2 virus (neurotropism).<sup>9</sup> Frequently reported symptoms range from fatigue, muscle weakness and memory loss to anosmia, ageusia, confusion and headache.<sup>1-6,10</sup> Some of these symptoms are directly or indirectly related to chronic pain, often worsening quality of life for a long period. As well, a prolonged period of mechanical ventilation in the ICU may cause what is called “post intensive care syndrome” or “ICU-acquired weakness”,<sup>9</sup> manifesting as cognitive dysfunction, muscle atrophy, sensory disruption and joint-related pain.<sup>8</sup> These patients will be at elevated risk of developing chronic pain. Furthermore, SARS-CoV-2 virus causes “cytokine storm”, which aggravates damage in multiple tissues including

joints and muscles that possibly triggers pain-related symptoms.<sup>8</sup> A recent study<sup>11</sup> has shown that the prevalence of new-onset headache was substantially higher in COVID-19 survivors compared with those in controlled subjects. Nevertheless, pain in COVID-19 survivors has been underestimated or paid little attention. Treatment of pain in such patients is prone to be of low priority, especially due to overburdened healthcare services or difficulty in consulting with a specialist over the course of the pandemic.<sup>12</sup>

As pain clinicians, we believe that understanding and managing pain-related symptoms along with other symptoms will help to improve the quality of life of SARS-CoV-2 survivors. Therefore, we collected currently available living evidence and conducted rapid systematic reviews and meta-analyses of observational studies to determine the incidence of pain-related and other symptoms in SARS-CoV-2 convalescents.

## Methods

We defined long-term complications as symptoms from which patients suffered for more than 1 month after onset of the first COVID-19 symptoms or after discharge from hospital. A meta-analysis was conducted according to the reporting guidelines for the Meta-analysis of Observational Studies in Epidemiology (MOOSE) Statement.<sup>13</sup> The protocol was previously registered on PROSPERO (CRD42021228393).

### *Search Strategy*

Three reviewers (HH, SH and TS) searched the electronic databases PubMed, EMBASE, Scopus, CHINAL and preprint servers MedRxiv and BioRxiv. No language restriction was applied. The last search was done on January 15, 2021. The full search strategy is described in eAppendix 1 in the Supplement. Reference lists of all identified articles on “long-covid” were manually searched. All relevant references obtained in the RIS (Research Information Systems) formats were transferred to EndNote X8.2 (USACO Corporation, Tokyo, Japan) and web-platform manager Covidence (Melbourne, Australia).

### *Eligibility Criteria*

Studies involving adults (>18 years old) with a confirmed diagnosis of SARS-CoV-2 were included, as were studies that followed up patients for a minimum of 2 weeks after discharge. Studies only focusing on acute symptoms from admission without any mention of long-term symptoms were excluded. Prospective or retrospective cohort studies were also included. Reviews, editorials, meta-analyses, case reports, case series and case-control studies were excluded. Regardless of whether a reported symptom was pain-related or not, studies reporting any relevant “long-covid” symptoms were included. Studies reporting only radiological findings of lung or brain were excluded.



### *Screening and Data Extraction*

Two reviewers (HH and TS) independently screened titles and abstracts of obtained references by using Covidence. Disagreements were resolved by discussion with a third reviewer (SH). Data extraction was performed by five reviewers (HH, TM, HS, SH and TS), and the extracted data was saved in an Excel spreadsheet. Extracted data included study setting, country where study was performed, patient setting, diagnostic criteria of SARS-CoV-2, respiratory support, mean age, percentage of males, follow-up period and information for evaluating study quality. The primary outcome was defined as pain-related symptoms such as headache or myalgia. The secondary outcome was defined as symptoms other than but relevant to pain such as depression or fatigue, or frequently reported symptoms such as anosmia or dyspnea. When data were reported as a graph only, we reproduced numerical data using Plot Digitizer (<http://plotdigitizer.sourceforge.net>).

### *Assessment of Study Quality*

The Newcastle-Ottawa scale for cohort studies<sup>14</sup> was used to assess the methodological quality of the studies by the five reviewers. Briefly, the scale consists of three subcategories: selection, comparability and outcome and 9 items. However, we focused on pooled incidence of long-covid symptoms rather than any treatment effects and all patients exposed to SARS-Cov-2 virus (excluding the non-exposed cohort); therefore, some of the items were

impossible to evaluate such as selection of the non-exposed cohort and comparability. Thus, these two items were excluded from the checklist and study quality was assessed by the rest of the items. One point was given for each item, for a maximum score of 6 and a minimum score of 0.

### *Statistical Analysis*

At least 3 studies were required per one symptom, due to constraints in performing data synthesis. The proportions of symptoms in an individual study were pooled using inverse variance methods following logit transformation.<sup>15</sup> Between-study variances were quantified using the DerSimonian-Laird estimator.<sup>16</sup> To calculate 95% confidence intervals in an individual study, the Clopper-Pearson interval was used. The  $I^2$  statistic was used as a measure of heterogeneity ( $I^2 > 60\%$ : high heterogeneity; 40-60%: moderate heterogeneity;  $< 40\%$ : low heterogeneity). Sensitivity analysis and subgroup analysis were not performed because our aim in this meta-analysis was to exploratorily collect currently available evidence of overall incidence.

We explored the source of heterogeneity by meta-regression using a mixed-effects model.<sup>17</sup> We incorporated three covariates (follow-up period, mean age and percentage of males) with fixed effects, and each study as a random effect.  $R^2$  was used as a measure of the amount of heterogeneity that could be accounted for by the covariate. Briefly, an index  $R^2$

value is defined as the ratio of explained heterogeneity to total heterogeneity, with a range of 0% to 100%. We plotted the logit transformed incidence of each symptom on the Y axis and the covariate on the X axis, along with predicted regression line (bubble plot).

Statistical significance was set at a 2-tailed  $\alpha = .05$ . To evaluate small-study effects (publication bias), a funnel plot was depicted and Egger test was performed,<sup>18</sup> with significance applied at  $P < .010$ . All statistical analyses were conducted using the *meta* package of R version 4.0.3 (The R Foundation for Statistical Computing) and RStudio 1.4 (Boston, MA).

## Results

The initial search yielded 1290 citations, of which 105 potentially relevant studies were assessed in full text, and finally, 35 studies<sup>19-53</sup> comprising 18,711 patients were included in the meta-analysis (Figure 1). All studies were written in English. A summary of the included studies is presented in eTable 1. Studies were reported mainly from Europe, followed by the USA and China. Follow-up duration ranged from 0.5 to 7 months.

The results of the Newcastle-Ottawa scale are shown in eTable 2. Most of the studies (30/35, 86%) scored 5 or 6, and the median score of the 35 studies was 5 (range: 3-6).

The results of each symptom on the forest plot are shown in eFigure 1-. The pooled incidence of each primary and secondary outcome is shown in order of frequency in Figures

2 and 3, respectively.

The most frequent symptom among pain-related symptoms was chest pain (17%, 95% CI, 12%-25%), followed by headache (16%, 95% CI, 9%-27%), arthralgia (13%, 95% CI, 7%-24%), neuralgia (12%, 95% CI, 3%-38%) and abdominal pain (11%, 95% CI, 7%-16%).

The most frequent symptom in the secondary outcomes was fatigue (45%, 95% CI, 32%-59%), followed by insomnia (26%, 95% CI, 9%-57%), dyspnea (25%, 95% CI, 15%-38%), weakness (25%, 95% CI, 8%-56%) and anosmia (19%, 95% CI, 13%-27%).

The results of  $R^2$  obtained by meta-regression are shown in the Table, and those of the statistical analyses and bubble plots are detailed in eFigures 1-. Among pain-related symptoms, significant correlations were identified only for neuralgia: however, only three studies with this symptom were included. For instance, the regression coefficient for follow-up period was 0.39 (logit transformed), which means that every one month of follow-up corresponds to an increase of 1.45 units (45% increase) in prevalence in patients who developed neuralgia after acute COVID-19 infection. For the other symptoms, significant correlations were found for insomnia, dyspnea, weakness, anosmia, cough, ageusia, memory impairment, depression, anxiety, nasal blockage, weight loss, sputum, chills and nausea. Among the symptoms overall, 53% remained unexplained when using the three covariates in the model.

The results of the funnel plot are shown in eFigure 1-. For pain-related symptoms,

small-study effects as assessed by Egger test were observed for 4 of 8 symptoms. For other symptoms, small-study effects were observed for 15 of 26 symptoms. In total, small-study effects were identified for 56% of the symptoms.

## Discussion

The current meta-analysis suggested three main findings. First, pain-related symptoms in COVID-19 survivors were multifarious with a incidence of 5-17%. Second, other symptoms were more multifaceted with incidences ranging from 2% to 45%. Third, every symptom varied extensively in its incidence, and the three major covariates (follow-up, age and sex) could not explain the heterogeneity.

Among pain-related symptoms, the highest pooled incidence was chest pain (17%), followed by headache (16%), arthralgia (13%), neuralgia (12%) and abdominal pain (11%). Chest pain is also referred to as “lung burn”, which is considered to be a result of lung injury by SARS-CoV-2 infection.<sup>6</sup> Alternatively, other researchers pointed out that chest pain may result from pericarditis caused by infection.<sup>29</sup> Headache is one of the most common CNS symptoms in patients with SARS-CoV-2 infection.<sup>54,55</sup> It can persist over the period of the initial infection,<sup>56</sup> or it can develop as a new-onset form during healing.<sup>11</sup> Proposed mechanisms include direct invasion of trigeminal nerve endings by SARS-CoV-2 via disruption of the brain-blood barrier, trigeminovascular activation via involvement of

endothelial cells with ACE2 expression, or triggering of perivascular trigeminal nerve endings by release of cytokines and pro-inflammatory mediators.<sup>56</sup>

Among other symptoms, almost half of the patients developed fatigue. Generally, fatigue is considered to be closely related to chronic pain. Myalgic encephalomyelitis/chronic fatigue syndrome (ME/CFS)<sup>57</sup> or fibromyalgia<sup>58</sup> are good examples. A recent report suggested that there are similarities and overlap in pathology between long COVID symptoms and ME/CFS.<sup>4,57</sup> As fatigue is often refractory to a single approach, holistic management such as rehabilitation or cognitive behavioral therapy is required.<sup>6</sup> Weakness, often accompanied by myalgia and arthralgia, is a musculoskeletal manifestation of SARS-CoV-2 infection.<sup>59</sup> Muscle fiber atrophy, extensive use of corticosteroids, prolonged mechanical ventilation or systematic inflammation may be the causes of weakness.<sup>59</sup>

From the results of the meta-regression, the incidence of neuralgia was significantly associated with follow-up period, age or sex to some extent; however, only 3 studies were included with this symptom. Therefore, it is difficult to consider this result to be valid. As another example, an inverse association was found between the incidence of weakness and age, but we could not explain this well. In any case, we are aware that these statistical models are preliminary and exploratory, and 53% of symptoms were not explainable despite three typical covariates being incorporated into the model. Symptoms of long COVID are reported to be on-and-off, cyclic or multiphasic,<sup>5</sup> which is why the linear regression model did not fit

well.

To our knowledge, two similar systematic reviews with or without meta-analysis on long COVID still exist in preprint form.<sup>60,61</sup> The strength of our study is that it highlights various symptoms from the perspective of pain, which might provide physicians with new insight into the management of patients who suffer from long-term sequelae of SARS-CoV-2 infection.

## **Limitations**

This study has several limitations. First, considerable heterogeneity was found in most of the symptoms, and meta-regression could not explain it in just over half of symptoms. Possible reasons may be the following: in the light of the nature of observational studies, the subjects are not homogenous. The current study includes reports from a wide range of countries; thus, the definition and diagnostic criteria of symptoms might vary from study to study. The majority of data were collected via telephone interview or online survey. A face-to-face visit was not always possible during the COVID-19 pandemic, and therefore, recall bias might possibly have occurred. Second, the current study did not include “brain fog”, “covid toe” or “post-exertional malaise”, which are widely known as post-COVID symptoms,<sup>2,6,26,59</sup> because these symptoms did not fulfill our inclusion criteria of at least three studies being required for data synthesis. However, we will be able to update this review if more reports are published

on these symptoms in the future. Third, publication bias was identified for 56% of all symptoms. This suggested that the point estimates of the incidence of symptoms in our study might have been overestimated or underestimated. Lastly, the current study is a rapid, living meta-analysis. More robust evidence will be collected in the near future.

## **Conclusions**

The present meta-analysis highlighted the incidence in pain-related and other typical symptoms in patients with PASC. It remains uncertain whether post-COVID symptoms progress or regress over time and to what extent PASC are associated with age or sex.



## References

1. The Lancet. Facing up to long COVID. *Lancet*. 2020;396(10266):1861. doi: 10.1016/s0140-6736(20)32662-3
2. Yelin D, Wirthem E, Vetter P, et al. Long-term consequences of COVID-19: research needs. *Lancet Infect Dis*. 2020;20(10):1115-1117. doi: 10.1016/s1473-3099(20)30701-5
3. Mahase E. Covid-19: What do we know about "long covid"? *BMJ*. 2020;370:m2815. doi: 10.1136/bmj.m2815
4. Long COVID: let patients help define long-lasting COVID symptoms. *Nature*. 2020;586(7828):170. doi: 10.1038/d41586-020-02796-2
5. Callard F, Perego E. How and why patients made Long Covid. *Soc Sci Med*. 2021;268:113426. doi: <https://doi.org/10.1016/j.socscimed.2020.113426>
6. Mendelson M, Nel J, Blumberg L, et al. Long-COVID: An evolving problem with an extensive impact. *S Afr Med J*. 2020;111(1):10-12. doi: 10.7196/SAMJ.2020.v111i11.15433
7. National Institutes of Health. NIH launches new initiative to study “Long COVID”. <https://www.nih.gov/about-nih/who-we-are/nih-director/statements/nih-launches-new-initiative-study-long-covid>. Accessed March 21, 2021.
8. Su S, Cui H, Wang T, Shen X, Ma C. Pain: A potential new label of COVID-19. *Brain Behav Immun*. 2020;87:159-160. doi: <https://doi.org/10.1016/j.bbi.2020.05.025>
9. Kemp HI, Corner E, Colvin LA. Chronic pain after COVID-19: implications for rehabilitation. *Brit J Anaesth*. 2020;125(4):436-440. doi: 10.1016/j.bja.2020.05.021
10. Prescott HC. Outcomes for patients following hospitalization for COVID-19. *JAMA*. 2021 doi: 10.1001/jama.2021.3430
11. Soares FHC, Kubota GT, Fernandes AM, et al. Prevalence and characteristics of new-onset pain in COVID-19 survivors, a controlled study. *Eur J Pain*. 2021 doi: 10.1002/ejp.1755
12. Lokugamage AU, Bowen MA, Blair J. Long covid: doctors must assess and investigate

patients properly. *BMJ*. 2020;371:m4583. doi: 10.1136/bmj.m4583

13. Stroup DF, Berlin JA, Morton SC, et al. Meta-analysis of observational studies in epidemiology: a proposal for reporting. Meta-analysis Of Observational Studies in Epidemiology (MOOSE) group. *JAMA*. 2000;283(15):2008-12. doi: 10.1001/jama.283.15.2008

14. Wells GA, Shea B, O'Connell D, et al. The Newcastle–Ottawa scale(NOS) for assessing the quality of nonrandomised studies in meta-analyses. [www.ohri.ca/programs/clinical\\_epidemiology/oxford.asp](http://www.ohri.ca/programs/clinical_epidemiology/oxford.asp). Accessed March 21, 2021.

15. Barendregt JJ, Doi SA, Lee YY, Norman RE, Vos T. Meta-analysis of prevalence. *J Epidemiol Community Health*. 2013;67(11):974-8. doi: 10.1136/jech-2013-203104

16. DerSimonian R, Laird N. Meta-analysis in clinical trials. *Control Clin Trials*. 1986;7(3):177-88. doi: 10.1016/0197-2456(86)90046-2

17. Borenstein M, Hedges, LV, Higgins JT, Rothstein, HR, eds. *Introduction to Meta-Analysis*. West Sussex, UK: John Wiley and Sons, Ltd; 2009.

18. Egger M, Davey Smith G, Schneider M, Minder C. Bias in meta-analysis detected by a simple, graphical test. *BMJ*. 1997;315(7109):629-34. doi: 10.1136/bmj.315.7109.629

19. Arnold DT, Hamilton FW, Milne A, et al. Patient outcomes after hospitalisation with COVID-19 and implications for follow-up: Results from a prospective UK cohort. *Thorax*. 2020 doi: 10.1136/thoraxjnl-2020-216086

20. Boscolo-Rizzo P, Borsetto D, Fabbris C, et al. Evolution of altered sense of smell or taste in patients with mildly symptomatic COVID-19. *JAMA Otolaryngol Head Neck Surg*. 2020;146(8):729-732. doi: 10.1001/jamaoto.2020.1379

21. Carfi A, Bernabei R, Landi F. Persistent symptoms in patients after acute COVID-19. *JAMA* 2020;324(6):603-605. doi: 10.1001/jama.2020.12603

22. Carvalho-Schneider C, Laurent E, Lemaigen A, et al. Follow-up of adults with noncritical COVID-19 two months after symptom onset. *Clin Microbiol Infect*. 2020;27(2):258-263. doi: 10.1016/j.cmi.2020.09.052

23. Cheng D, Calderwood C, Skjellberg E, Ainley A. Clinical characteristics and outcomes of adult patients admitted with COVID-19 in East London: a retrospective cohort analysis. *BMJ Open Respir Res.* 2021;8(1):e000813. doi: 10.1136/bmjresp-2020-000813
  
24. Chiesa-Estomba CM, Lechien JR, Radulesco T, et al. Patterns of smell recovery in 751 patients affected by the COVID-19 outbreak. *Eur J Neurol.* 2020;27(11):2318-2321. doi: 10.1111/ene.14440
  
25. Cirulli ET, Schiabor Barrett KM, Riffle S, et al. Long-term COVID-19 symptoms in a large unselected population. *medRxiv.* 2020:2020.10.07.20208702. doi: 10.1101/2020.10.07.20208702
  
26. Davis HE, Assaf GS, McCorkell L, et al. Characterizing long COVID in an international cohort: 7 months of symptoms and their impact. *medRxiv.* 2020:2020.12.24.20248802. doi: 10.1101/2020.12.24.20248802
  
27. Dennis A, Wamil M, Kapur S, et al. Multi-organ impairment in low-risk individuals with long COVID. *medRxiv.* 2020:2020.10.14.20212555. doi: 10.1101/2020.10.14.20212555
  
28. Eiros R, Barreiro-Perez M, Martin-Garcia A, et al. Pericarditis and myocarditis long after SARS-CoV-2 infection: a cross-sectional descriptive study in health-care workers. *medRxiv.* 2020:2020.07.12.20151316. doi: 10.1101/2020.07.12.20151316
  
29. Goërtz YMJ, Van Herck M, Delbressine JM, et al. Persistent symptoms 3 months after a SARS-CoV-2 infection: the post-COVID-19 syndrome? *ERJ Open Res.* 2020;6(4):00542-2020. doi: 10.1183/23120541.00542-2020
  
30. Halpin SJ, McIvor C, Whyatt G, et al. Postdischarge symptoms and rehabilitation needs in survivors of COVID-19 infection: a cross-sectional evaluation. *J Med Virol.* 2021;93(2):1013-1022. doi: 10.1002/jmv.26368
  
31. Huang C, Huang L, Wang Y, et al. 6-month consequences of COVID-19 in patients discharged from hospital: a cohort study. *Lancet.* 2021 doi: 10.1016/S0140-6736(20)32656-8
  
32. Klein H, Asseo K, Karni N, et al. Onset, duration, and persistence of taste and smell changes and other COVID-19 symptoms: longitudinal study in Israeli patients. *medRxiv.* 2020:2020.09.25.20201343. doi: 10.1101/2020.09.25.20201343

33. Lovato A, Galletti C, Galletti B, de Filippis C. Clinical characteristics associated with persistent olfactory and taste alterations in COVID-19: a preliminary report on 121 patients. *Am J Otolaryngol*. 2020;41(5):102548. doi: 10.1016/j.amjoto.2020.102548
34. Mandal S, Barnett J, Brill SE, et al. 'Long-COVID': a cross-sectional study of persisting symptoms, biomarker and imaging abnormalities following hospitalisation for COVID-19. *Thorax*. 2020 doi: 10.1136/thoraxjnl-2020-215818
35. Moradian ST, Parandeh A, Khalili R, Karimi L. Delayed symptoms in patients recovered from COVID-19. *Iran J Public Health*. 2020;49(11):2120-2127. doi: 10.18502/ijph.v49i11.4729
36. Neto DB, Fornazieri MA, Dib C, et al. Chemosensory dysfunction in COVID-19: prevalences, recovery rates, and clinical associations on a large Brazilian sample. *JAMA. Otolaryngol Head Neck Surg* 2020:194599820954825. doi: 10.1177/0194599820954825
37. Petersen MS, Kristiansen MF, Hanusson KD, et al. Long COVID in the Faroe Islands - a longitudinal study among non-hospitalized patients. *Clin Infect Dis*. 2020;ciaa1792. doi: 10.1093/cid/ciaa1792
38. Pilotto A, Cristillo V, Piccinelli SC, et al. COVID-19 severity impacts on long-term neurological manifestation after hospitalisation. *medRxiv*. 2021:2020.12.27.20248903. doi: 10.1101/2020.12.27.20248903
39. Poncet-Megemont L, Paris P, Tronchere A, et al. High prevalence of headaches during Covid-19 infection: a retrospective cohort study. *Headache*. 2020;60(10):2578-2582. doi: 10.1111/head.13923
40. Rahmani H, Davoudi-Monfared E, Nourian A, et al. Comparing outcomes of hospitalized patients with moderate and severe COVID-19 following treatment with hydroxychloroquine plus atazanavir/ritonavir. *Daru*. 2020;28(2):625-634. doi: 10.1007/s40199-020-00369-2
41. Salmon-Ceron D, Slama D, De Broucker T, et al. Clinical, virological and imaging profile in patients with prolonged forms of COVID-19: a cross-sectional study. *J Infect*. 2020 doi: 10.1016/j.jinf.2020.12.002
42. Savarraj JPJ, Burkett AB, Hinds SN, et al. Three-month outcomes in hospitalized

COVID-19 patients. *medRxiv*. 2020:2020.10.16.20211029. doi: 10.1101/2020.10.16.20211029

43. Stavem K, Ghanima W, Olsen MK, Gilboe HM, Einvik G. Persistent symptoms 1.5-6 months after COVID-19 in non-hospitalised subjects: a population-based cohort study. *Thorax*. 2020;thoraxjnl-2020-216377. doi: 10.1136/thoraxjnl-2020-216377

44. Sudre CH, Murray B, Varsavsky T, et al. Attributes and predictors of Long-COVID: analysis of COVID cases and their symptoms collected by the Covid Symptoms Study App. *medRxiv*. 2020:2020.10.19.20214494. doi: 10.1101/2020.10.19.20214494

45. Tenforde MW, Kim SS, Lindsell CJ, et al. Symptom duration and risk factors for delayed return to usual health among outpatients with COVID-19 in a multistate health care systems network - United States, March-June 2020. *MMWR Morb Mortal Wkly Rep*. 2020;69(30):993-998. doi: 10.15585/mmwr.mm6930e1

46. Tomasoni D, Bai F, Castoldi R, et al. Anxiety and depression symptoms after virological clearance of COVID-19: a cross-sectional study in Milan, Italy. *J Med Virol*. 2021;93(2):1175-1179. doi: 10.1002/jmv.26459

47. Townsend L, Dyer AH, Jones K, et al. Persistent fatigue following SARS-CoV-2 infection is common and independent of severity of initial infection. *PLoS One*. 2020;15(11):e0240784. doi: 10.1371/journal.pone.024078

48. Wang X, Xu H, Jiang H, et al. Clinical features and outcomes of discharged coronavirus disease 2019 patients: a prospective cohort study. *QJM*. 2020;113(9):657-665. doi: 10.1093/qjmed/hcaa178

49. Weerahandi H, Hochman KA, Simon E, et al. Post-discharge health status and symptoms in patients with severe COVID-19. *J Gen Intern Med*. 2021;36(3):738-745. doi: 10.1007/s11606-020-06338-4

50. Wu C, Hu X, Song J, et al. Mental health status and related influencing factors of COVID-19 survivors in Wuhan, China. *Clin Transl Med*. 2020;10(2):e52. doi: 10.1002/ctm2.52

51. Xiong Q, Xu M, Li J, et al. Clinical sequelae of COVID-19 survivors in Wuhan, China: a single-centre longitudinal study. *Clin Microbiol Infect*. 2021;27(1):89-95. doi:

10.1016/j.cmi.2020.09.023

52. Yan N, Wang W, Gao Y, et al. Medium term follow-up of 337 patients with coronavirus disease 2019 (COVID-19) in a Fangcang Shelter Hospital in Wuhan, China. *Front Med (Lausanne)*. 2020;7:373. doi: 10.3389/fmed.2020.00373

53. Zhao YM, Shang YM, Song WB, et al. Follow-up study of the pulmonary function and related physiological characteristics of COVID-19 survivors three months after recovery. *EClinicalMedicine*. 2020;25:100463. doi: 10.1016/j.eclinm.2020.100463

54. Berger JR. COVID-19 and the nervous system. *J Neurovirol*. 2020;26(2):143-148. doi: 10.1007/s13365-020-00840-5

55. Niazkar HR, Zibaee B, Nasimi A, Bahri N. The neurological manifestations of COVID-19: a review article. *Neurol Sci*. 2020;41(7):1667-1671. doi: 10.1007/s10072-020-04486-3

56. Bolay H, Gül A, Baykan B. COVID-19 is a real headache! *Headache*. 2020;60(7):1415-1421. doi: 10.1111/head.13856

57. Friedman KJ, Murovska M, Pheby DFH, Zalewski P. Our evolving understanding of ME/CFS. *Medicina (Kaunas)*. 2021;57(3):200. doi: 10.3390/medicina57030200

58. Bair MJ, Krebs EE. Fibromyalgia. *Ann Intern Med*. 2020;172(5):ITC33-ITC48. doi: 10.7326/aitc202003030

59. Disser NP, De Micheli AJ, Schonk MM, et al. Musculoskeletal consequences of COVID-19. *J Bone Joint Surg Am*. 2020;102(14):1197-1204. doi: 10.2106/jbjs.20.00847

60. Michelen M, Manoharan L, Elkheir N, et al. Characterising long-term covid-19: a rapid living systematic review. *medRxiv*. 2020:2020.12.08.20246025. doi: 10.1101/2020.12.08.20246025

61. Lopez-Leon S, Wegman-Ostrosky T, Perelman C, et al. More than 50 long-term effects of COVID-19: a systematic review and meta-analysis. *Res Sq [Preprint]*. 2021:rs.3.rs-266574. doi: 10.21203/rs.3.rs-266574/v1

## Figures Legends

**Figure 1. PRISMA flow diagram for literature search, study screening and selection.**

**Figure 2. Summary random effects estimates with 95% confidence interval (CI) from 8 meta-analyses on the incidence of pain-related symptoms.**  $I^2$  represents the degree of heterogeneity, and Egger's P represents publication bias.

**Figure 3. Summary random effects estimates with 95% confidence interval (CI) from 8 meta-analyses on the incidence of other symptoms.**  $I^2$  represents the degree of heterogeneity, and Egger's P represents publication bias.

**Table. Results of Meta-regression to Explore the Source of Heterogeneity**

| Symptoms              | No of studies | Heterogeneity (I <sup>2</sup> ) | Amount of heterogeneity accounting for (R <sup>2</sup> ) |        |            |
|-----------------------|---------------|---------------------------------|--|--------|------------|
|                       |               |                                 | (%)  |        |            |
|                       |               |                                 | Follow-up period   | Age    | Sex (male) |
| Pain-related symptoms |               |                                 |  |        |            |
| Chest pain            | 16            | 99                              | 0  | 0      | 0          |
| Headache              | 20            | 99                              | 0  | 0      | 0          |
| Arthralgia            | 13            | 99                              | 0  | 0      | 0          |
| Neuralgia             | 3             | 97                              | 100 (+)  | 92 (-) | 69 (+)     |
| Abdominal pain        | 10            | 98                              | 0  | 0      | 0          |
| Myalgia               | 17            | 100                             | 0  | 0      | 0          |
| Sore throat           | 17            | 99                              | 0  | 0      | 0          |
| Ear pain              | 4             | 99                              | 0  | 0      | 0          |
| Other symptoms        |               |                                 |  |        |            |
| Fatigue               | 26            | 99                              | 0  | 0      | 0          |
| Insomnia              | 6             | 100                             | 44 (+)   | 24 (-) | 75 (+)     |
| Dyspnea               | 21            | 99                              | 35 (+)   | 0      | 0          |
| Weakness              | 5             | 98                              | 0  | 64 (-) | 0          |
| Anosmia               | 23            | 99                              | 0  | 35 (-) | 0          |
| Cough                 | 20            | 99                              | 0  | 37 (-) | 6 (-)      |
| Ageusia               | 18            | 98                              | 0  | 0      | 19 (-)     |
| Memory impairment     | 7             | 99                              | 66 (+)   | 0      | 14 (+)     |
| Confusion             | 5             | 94                              | 0  | 0      | 0          |
| Depression            | 10            | 99                              | 55 (-)   | 0      | 23 (+)     |
| Fever                 | 16            | 98                              | 0  | 0      | 0          |
| Rhinorrhea            | 8             | 96                              | 0  | 0      | 0          |
| Anxiety               | 8             | 99                              | 66 (+)   | 0      | 67 (+)     |
| Palpitation           | 8             | 100                             | 0  | 0      | 0          |
| Sneezing              | 3             | 99                              | 0  | 0      | 0          |
| Alopecia              | 5             | 94                              | 0  | 0      | 0          |
| Anorexia              | 9             | 99                              | 0  | 0      | 0          |
| Nasal blockage        | 4             | 74                              | 33 (-)   | 0      | 70 (+)     |
| Diarrhea              | 17            | 99                              | 0  | 0      | 0          |
| Vertigo (Dizziness)   | 13            | 99                              | 0  | 0      | 0          |
| Weight loss           | 13            | 93                              | 23 (-)   | 0      | 40 (+)     |
| Sputum                | 6             | 50                              | 65 (-)   | 0      | 0          |
| Chills                | 6             | 99                              | 72 (+)   | 0      | 77 (+)     |



|          |    |    |        |       |   |
|----------|----|----|--------|-------|---|
| Nausea   | 11 | 99 | 54 (+) | 1 (-) | 0 |
| Vomiting | 6  | 91 | 7 (+)  | 0     | 0 |

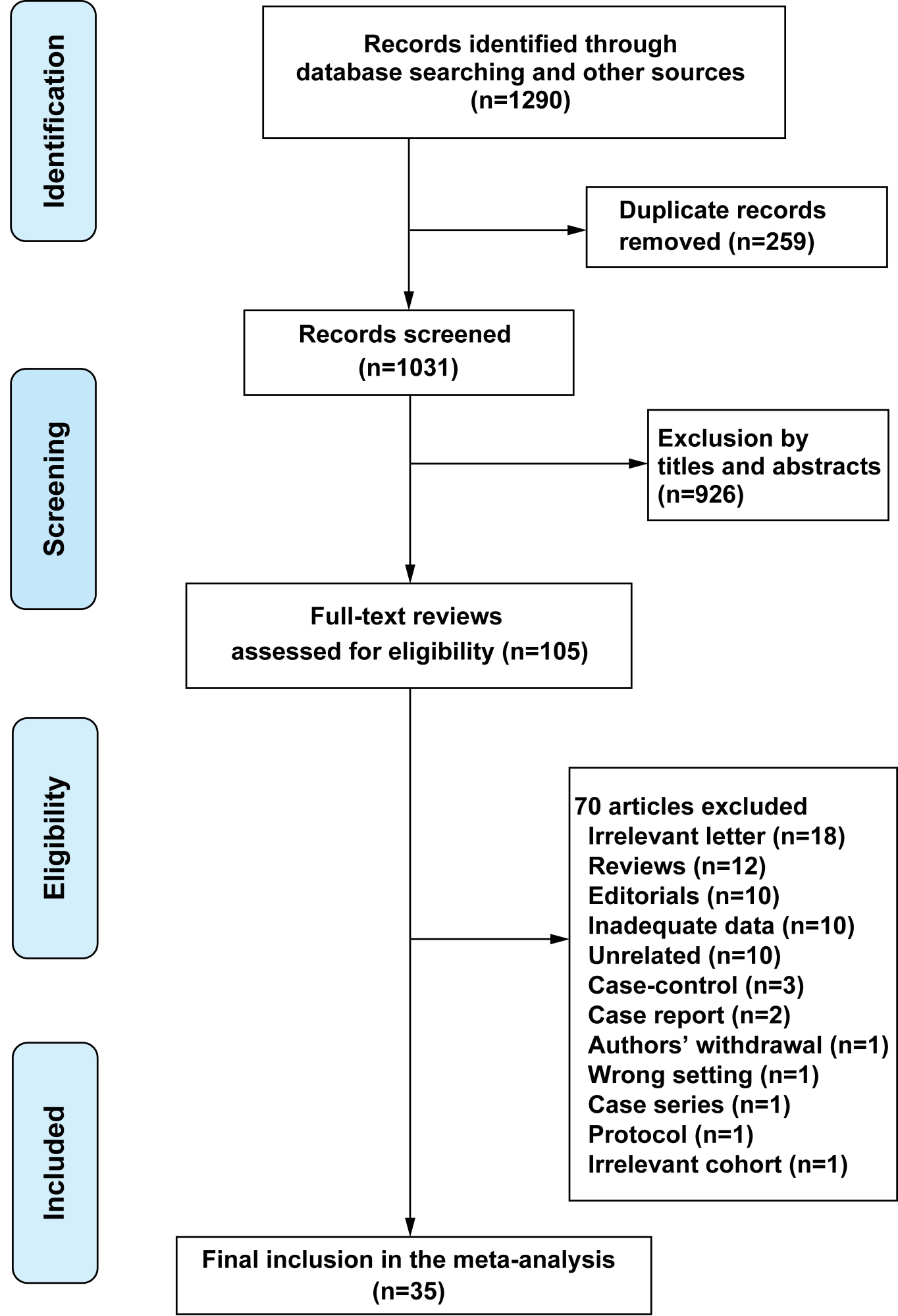
$R^2$  represents a measure of the amount of heterogeneity that can be explained by the covariate.

Bold numbers indicate that a significant correlation was found between the symptom and the covariate.

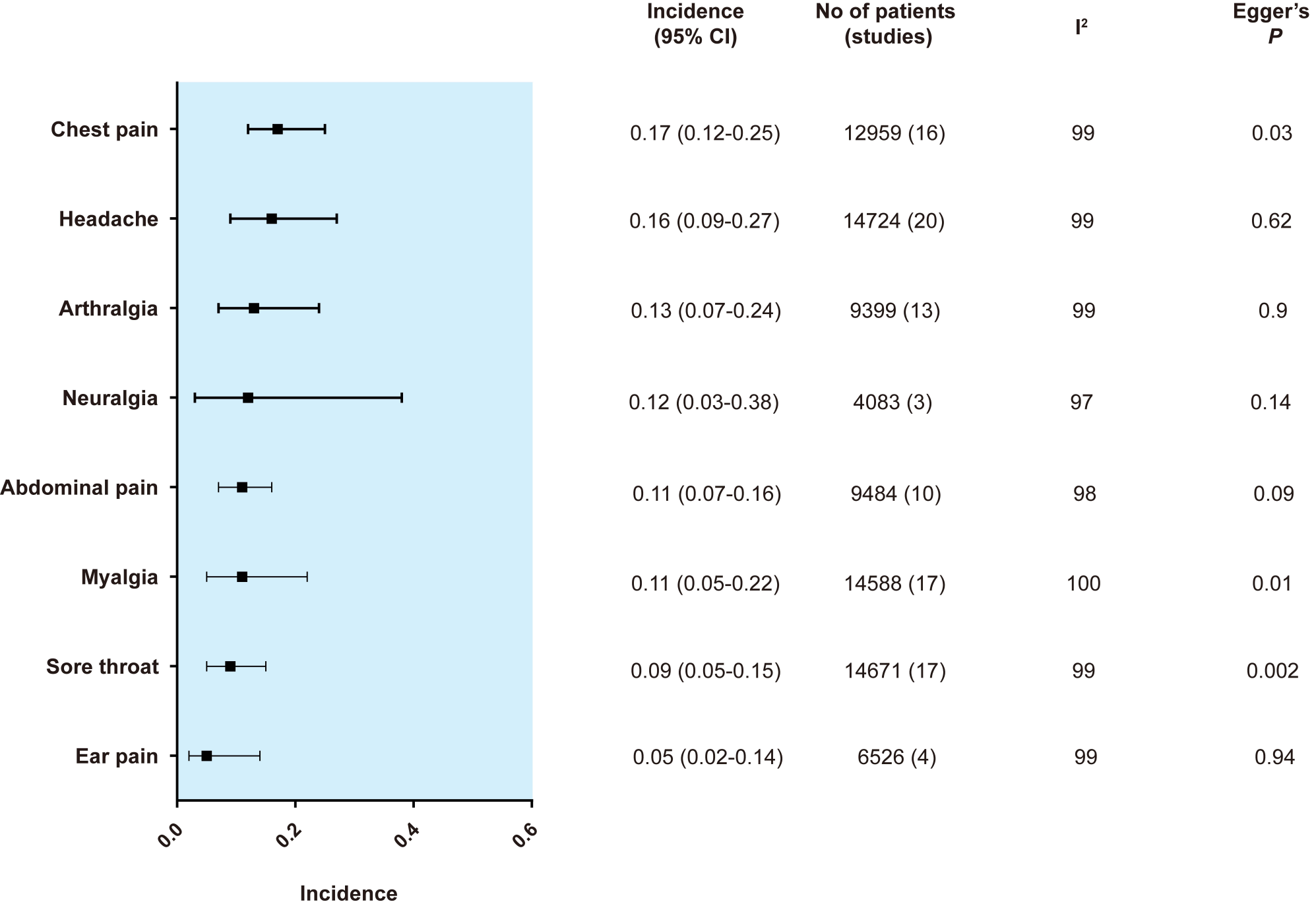
+ or – in parenthesis indicates a positive or negative coefficient in the regression model.

Note that for insomnia and follow-up period, for instance, the incidence of insomnia is significantly higher when the follow-up period increases (positive correlation).

Note that for ageusia and sex, the incidence of ageusia is significantly higher when the ratio of males in a study population decreases (inverse correlation).



**Figure 1**



**Figure 2**

