

1 **Full title: Exploring the causal effect of maternal pregnancy adiposity on offspring**  
2 **adiposity: Mendelian randomization using polygenic risk scores**

3 **Short title: Exploring the causal effect of maternal pregnancy adiposity on offspring**  
4 **adiposity**

5 Tom A Bond<sup>1,2,3,4,5,\*</sup>, Rebecca C Richmond<sup>4,5</sup>, Ville Karhunen<sup>1,6,7</sup>, Gabriel Cuellar-Partida<sup>3,8</sup>,  
6 Maria Carolina Borges<sup>4,5</sup>, Verena Zuber<sup>1,9</sup>, Alexessander Couto Alves<sup>1,10</sup>, Dan Mason<sup>11</sup>,  
7 Tiffany C Yang<sup>11</sup>, Marc J Gunter<sup>12</sup>, Abbas Dehghan<sup>1,2</sup>, Ioanna Tzoulaki<sup>1,2,13</sup>, Sylvain Sebert<sup>6</sup>,  
8 David M Evans<sup>3,4</sup>, Alex M Lewin<sup>1,14</sup>, Paul F O'Reilly<sup>15</sup>, Deborah A Lawlor<sup>4,5,§</sup>, Marjo-Riitta  
9 Järvelin<sup>1,2,6,16,17,§</sup>

10 <sup>1</sup>Department of Epidemiology and Biostatistics, Imperial College London, London, UK.

11 <sup>2</sup>MRC-PHE Centre for Environment and Health, School of Public Health, Imperial College  
12 London, London, UK.

13 <sup>3</sup>The University of Queensland Diamantina Institute, The University of Queensland,  
14 Brisbane, Australia.

15 <sup>4</sup>MRC Integrative Epidemiology Unit at the University of Bristol, Bristol, UK.

16 <sup>5</sup>Population Health Sciences, Bristol Medical School, University of Bristol, Bristol, UK.

17 <sup>6</sup>Center for Life-course Health Research, Faculty of Medicine, University of Oulu, Oulu,  
18 Finland.

19 <sup>7</sup>Research Unit of Mathematical Sciences, University of Oulu, Oulu, Finland.

20 <sup>8</sup>23andMe, Inc., Sunnyvale, CA, USA.

21 <sup>9</sup>MRC Biostatistics Unit, School of Clinical Medicine, University of Cambridge, Cambridge,  
22 UK.

23 <sup>10</sup>School of Biosciences and Medicine, Faculty of Health and Medical Sciences, University of  
24 Surrey, Guildford, UK.

25 <sup>11</sup>Born in Bradford, Bradford Institute for Health Research, Bradford Teaching Hospitals NHS  
26 Foundation Trust, Bradford, UK.

27 <sup>12</sup>Section of Nutrition and Metabolism, IARC, Lyon, France.

28 <sup>13</sup>Department of Hygiene and Epidemiology, University of Ioannina Medical School,  
29 Ioannina, Greece

30 <sup>14</sup>Department of Medical Statistics, London School of Hygiene and Tropical Medicine,  
31 London, UK.

32 <sup>15</sup>Genetics and Genomic Sciences, Icahn School of Medicine at Mount Sinai, New York,  
33 USA.

34 <sup>16</sup>Unit of Primary Care, Oulu University Hospital, Oulu, Finland.

35 <sup>17</sup>Department of Life Sciences, College of Health and Life Sciences, Brunel University  
36 London, London, UK.

37 \*Corresponding author

38 §These authors contributed equally to this work

39

## 40 **Abstract**

### 41 Background

42 It has been hypothesised that greater maternal adiposity before or during pregnancy causes  
43 greater offspring adiposity in childhood and adulthood, via causal intrauterine or  
44 periconceptual mechanisms. Previous Mendelian randomization (MR) estimates were  
45 imprecise, with wide confidence intervals that included potentially important protective or  
46 adverse effects, and may have been biased by collider effects or imperfect adjustment for  
47 genetic inheritance. Here we use an improved MR approach to investigate whether  
48 associations between maternal pre-/early pregnancy body mass index (BMI) and offspring  
49 adiposity from birth to adolescence are causal, or are instead due to confounding.

### 50 Methods and findings

51 We undertook confounder adjusted multivariable (MV) regression and Mendelian  
52 randomization (MR) using mother-offspring pairs from two UK cohorts: Avon Longitudinal  
53 Study of Parents and Children (ALSPAC) and Born in Bradford (BiB). In ALSPAC and BiB  
54 the outcomes were birthweight (BW;  $N = 9339$ ) and BMI at age 1 ( $N = 8659$ ) and 4 years ( $N = 7575$ ), and in ALSPAC only we investigated BMI at 10 ( $N = 4476$ ) and 15 years ( $N = 4112$ )  
55 and dual-energy X-ray absorptiometry (DXA) determined fat mass index (FMI) from age 10–  
56 18 years ( $N = 2659$  to  $3855$ ). We compared MR results from several polygenic risk scores  
57 (PRS), calculated from maternal non-transmitted alleles at between 29 and 80,939 single  
58 nucleotide polymorphisms (SNPs). MV and MR showed a consistent positive association of  
59 maternal BMI with BW, but for adiposity at most older ages MR estimates were weaker than  
60 MV estimates. In MV regression a one standard deviation (SD) higher maternal BMI was  
61 associated with a 0.13 (95% confidence interval [CI]: 0.10, 0.16) SD increase in offspring  
62 BW. The corresponding MR estimate from the strongest PRS (including up to 80,939 SNPs)  
63 was 0.14 (95% CI: 0.05, 0.23), with no difference between the two estimates ( $P_{\text{difference}} =$   
64 0.84). For 15 year BMI the MV and MR estimates (80,939 SNPs) were 0.32 (95% CI: 0.29,  
65 0.36) and 0.13 (95% CI: 0.01, 0.24) respectively ( $P_{\text{difference}} = 1.0e-3$ ). Results for FMI were  
66 similar to those for adolescent BMI. As the number of SNPs included in the PRS increased,  
67 the MR confidence intervals narrowed and the effect estimates for adolescent adiposity  
68 became closer to the MV estimates. Sensitivity analyses suggested the stronger effects with  
69 more SNPs were explained by horizontal pleiotropic bias away from zero. Consequently, the  
70 unbiased difference between the MV and MR estimates is probably greater than shown in  
71 our main analyses. Furthermore, MR estimates from IVs with fewer SNPs provided no strong  
72 evidence for a causal effect on adolescent adiposity.  
73

### 74 Conclusions

75 Our results suggest that higher maternal pre-/early-pregnancy BMI is not a key driver of  
76 higher adiposity in the next generation. Thus, they support interventions that target the whole  
77 population for reducing overweight and obesity, rather than a specific focus on women of  
78 reproductive age.

## 79 Introduction

80 It has been hypothesised that prenatal exposure to greater maternal adiposity during or prior  
81 to pregnancy causes greater adiposity in the offspring throughout life, via intrauterine effects  
82 or periconceptional mechanisms (for example effects on the oocyte) (1-4). There are well  
83 replicated observational associations between maternal body mass index (BMI) before or  
84 during pregnancy and offspring adiposity and cardiometabolic outcomes in childhood,  
85 adolescence and adulthood (5-8). Furthermore, evidence from animal experiments suggests  
86 that such associations are plausibly due to causal biological effects in the intrauterine period  
87 (9, 10). If true, this could have important implications for obesity prevention policy, because  
88 interventions to reduce maternal obesity before pregnancy might reduce offspring obesity  
89 risk in later life (1, 2, 6).

90 Triangulated epidemiological evidence from different study designs (11) suggests that  
91 associations between maternal BMI and offspring childhood/adolescent adiposity may *not*  
92 reflect a causal effect. For example, negative paternal exposure control studies (12-18) and  
93 studies examining associations within sibling groups (19, 20) suggest that confounding by  
94 genetic and/or environmental factors shared within families may be an important explanation  
95 for the associations. In addition, two Mendelian randomization (MR) (21, 22) studies, which  
96 used genetic variants as instrumental variables (IVs) for maternal BMI, provided no strong  
97 evidence for a causal effect (14, 23). However, the primary analysis in the most recent MR  
98 study (23) was adjusted for an offspring weighted allele score, and simulations suggest that  
99 the use of a *weighted* allele score may not be the optimal approach to avoid bias due to  
100 genetic inheritance (24). Also, previous studies (21, 22) were only able to adjust for offspring  
101 genetic variants, and it may be necessary to control for paternal genotype as well to avoid  
102 collider bias (25) (see **Supplementary information S1**). Furthermore, the causal estimates  
103 from previous MR studies were imprecise (14, 23, 25). For example, in the largest study ( $N =$   
104 6057) a one SD higher maternal BMI was associated with a 0.05 SD increase in mean  
105 offspring BMI at age 7, but the 95% confidence interval was consistent with a 0.11 SD  
106 reduction or a 0.21 SD increase (23). If a positive causal effect is present this could have  
107 important public health implications, because it could lead to an accelerating  
108 intergenerational cycle of obesity that is difficult to break (1, 26). It is therefore important to  
109 conduct further MR investigations with improved methods, in order to obtain more precise  
110 estimates that are not subject to the aforementioned biases.

111 An alternative approach for avoiding bias due to genetic inheritance is to use maternal  
112 alleles that were not inherited by the offspring (maternal non-transmitted alleles) (27, 28),  
113 which avoids the need to adjust for offspring genotype. The precision of estimates could be  
114 improved by increasing the study sample size, but the feasibility of this is limited by the small  
115 number of studies worldwide with the necessary data for maternal non-transmitted allele  
116 analyses: maternal and offspring genotype, maternal pregnancy exposures and offspring  
117 outcomes. An alternative way to increase precision would be to increase the strength of the  
118 genetic IV (29). Previous MR studies followed the widely used practice of using only genome  
119 wide significant (GWS;  $P < 5e-8$ ) genetic variants (hereafter referred to as single nucleotide  
120 polymorphisms [SNPs]) to calculate the genetic risk score to be used as an IV (14, 23).  
121 However, for polygenic traits such as BMI it is known that substantially improved phenotypic  
122 prediction can be achieved by including more SNPs in the genetic risk score (i.e. more  
123 weakly associated SNPs that individually are not GWS) (30-33). Such polygenic risk scores  
124 (PRS) have been shown to associate strongly with BMI throughout the life course (31).

125 We aimed to use maternal non-transmitted allele PRS as IVs in a one-sample MR design, to  
126 explore the causal effect of maternal BMI on offspring adiposity from birth to adolescence,

127 and to compare those results with confounder adjusted multivariable (MV) regression  
128 estimates. Based on previous MR studies (23, 28, 34) we hypothesised that greater  
129 maternal BMI would cause increased offspring BW, but that the causal effect would  
130 attenuate over childhood and adolescence. **Supplementary information S1** shows our MR  
131 analyses diagrammatically.

## 132 **Methods**

### 133 Study design

134 We conducted one-sample MR and compared these results with confounder adjusted  
135 multivariable (MV) regression analyses. We analysed data from two population based  
136 prospective birth cohorts: the Avon Longitudinal Study of Parents and Children (ALSPAC)  
137 and Born in Bradford (BiB). ALSPAC enrolled pregnant women who resided in and around  
138 the city of Bristol in the South West of England and had an expected delivery date between  
139 April 1, 1991 and December 31, 1992. The enrolled cohort included 15,247 pregnancies  
140 resulting in 14,775 live born babies. Ethical approval was obtained from the ALSPAC Ethics  
141 and Law Committee and the Local Research Ethics Committees. The study website contains  
142 details of all the data that are available through a fully searchable data dictionary and  
143 variable search tool and details of the study methodology have been reported previously (35,  
144 36). BiB enrolled women who resided in the city of Bradford in the North of England who  
145 attended an antenatal booking clinic between March 2007 and December 2010. The  
146 recruited cohort included 13,776 pregnancies resulting in 13,740 live born babies. Ethical  
147 approval was obtained from Bradford National Health Service Ethics Committee (ref  
148 06/Q1202/48) and details of the study methodology have been reported previously (37).

### 149 Selection of participants

150 Details of sample selection for each cohort are given in the flow charts in **Supplementary**  
151 **information S2**. We included live-born singletons with maternal and offspring genotype  
152 data, maternal BMI data and at least one offspring adiposity measure available, and selected  
153 one offspring from any sibling groups for inclusion (chosen at random in ALSPAC or to  
154 maximise the sample size with data available in BiB). As the effects we were exploring may  
155 differ by ethnicity (38) we limited analyses to two ethnic groups: White European and South  
156 Asian. There were very few participants from other ethnic groups in either cohort, therefore  
157 these participants were excluded. ALSPAC (93% White European) contributed only to the  
158 analyses in White Europeans and we meta-analysed these results with those from models  
159 fitted separately for BiB South Asians and BiB White Europeans. In ALSPAC, ethnicity was  
160 assessed by genetic multidimensional scaling (MDS) analysis during the quality control  
161 procedure for maternal, paternal and offspring genotype data. In BiB, mothers reported their  
162 ethnicity and the place of birth of their parents at the baseline interview and this was  
163 augmented by information from General Practitioner records (**Supplementary information**  
164 **S3**). For the offspring phenotypes the overall sample size for MR analyses ranged from  
165 2659–5085 for ALSPAC, 1566–2262 for BiB South Asians and 1339–1992 for BiB White  
166 Europeans. The sample sizes for confounder adjusted MV estimates were somewhat  
167 smaller due to missing confounder data (1884–3265 for ALSPAC, 325–449 for BiB South  
168 Asians and 442–604 for BiB White Europeans). To enable comparison between the  
169 confounder adjusted MV estimates from models that adjusted for different covariates, we  
170 fitted all the models for each outcome using an identical sample with non-missing data for all  
171 relevant variables.

### 172 Parental anthropometric variables

173 In ALSPAC, maternal pre-pregnancy weight and height were retrospectively reported by the  
174 women during pregnancy (at a mean gestational age of 24.7 weeks [SD 6.3]) or postnatally  
175 for 11.2% of mothers (at a mean of 22.0 weeks after birth [SD 6.7]); the reported weights  
176 correlated highly with weight recorded at the first antenatal clinic (Pearson correlation  
177 coefficient = 0.96). Paternal height and weight were reported by the fathers during their  
178 partner's pregnancy (or postnatally for a minority of fathers). In BiB, early pregnancy BMI  
179 was calculated from height reported by the mothers at recruitment (26–28 weeks gestation)  
180 and weight extracted from the first antenatal clinic records (median 12 weeks gestation).  
181 Paternal height and weight were reported by the fathers at recruitment, which for the majority  
182 of fathers was at the time of their partner's pregnancy.

### 183 Offspring anthropometric variables

184 Offspring outcomes included BW and BMI at age 1 and 4 years (in ALSPAC and BiB), BMI  
185 at age 10 and 15 years (ALSPAC only) and FMI at age 10, 12, 14, 16 and 18 years  
186 (ALSPAC only). The assessment of these outcomes is described in **Supplementary**  
187 **information S4**. Offspring BW was extracted from the birth record in BiB, and extracted from  
188 the birth record/notification or measured by research staff in ALSPAC. Birth length in  
189 ALSPAC was obtained similarly, and is not available for BiB participants. In ALSPAC, child  
190 and adolescent height and weight were obtained from clinical examination by study staff  
191 using a Harpenden Stadiometer (Holtain Limited, Dyfed, UK) and Tanita Body Fat Analyser  
192 (Model TBF 305; Tanita UK Limited, Viewsley, UK) respectively, or from child health records  
193 or maternal/offspring questionnaire responses (**Supplementary information S5**). In BiB,  
194 childhood height and weight were obtained from a variety of sources including clinical  
195 measurement by study staff or measurement at around age 4 years as part of the UK  
196 Government National Child Measurement Programme (NCMP) (in both cases using a  
197 Leicester Height Measure [Seca] and Seca digital scales), child health records, primary care  
198 records and school nurse records (**Supplementary information S5**). In ALSPAC, we  
199 calculated FMI as fat mass (kg) / height (m)<sup>2</sup> using fat mass measured by whole body DXA  
200 carried out with a Lunar Prodigy DXA scanner (GE Medical Systems Lunar, Madison, WI,  
201 USA). The scans were visually inspected and realigned where necessary. Once complete,  
202 the tester examined the scan to ensure its quality, and if necessary repeated the scan.

### 203 Anthropometric variable standardisation

204 In each of the three samples (ALSPAC, BiB White Europeans and BiB South Asians) we  
205 internally standardised exposure and outcome variables to give measures in standard  
206 deviation (SD) units. We standardised maternal BMI by maternal age (at delivery), in one  
207 year age categories. We standardised offspring BW by sex, and offspring BMI and FMI by  
208 sex and age (in one month categories).

### 209 Confounder adjusted multivariable regression

210 We considered the following variables to be potential confounders: maternal age (which was  
211 adjusted for in the standardised exposure by calculating z-scores within maternal age  
212 strata), parity, maternal smoking during pregnancy, parental occupation, maternal  
213 educational attainment, paternal educational attainment and paternal BMI. Standard  
214 protocols for assessing these variables were used in each cohort, and full details are  
215 provided in **Supplementary information S6**. We fitted three MV regression models: in  
216 model one we adjusted for maternal age, offspring age and offspring sex, in model two we  
217 additionally adjusted for the potential confounders listed above except for paternal BMI, and  
218 in model three (which was the main multivariable model of interest and is presented in  
219 **Results**) we additionally adjusted for paternal BMI. We took a complete case approach and

220 excluded individuals with any missing data, therefore models one to three were fitted using  
221 identical samples. In sensitivity analyses we adjusted all models for gestational age at  
222 delivery, and for 20 genetic principal components (PCs) which we calculated from genome-  
223 wide SNPs separately for each of the three samples (**Supplementary information S7**), in  
224 order to adjust for ancestry. In BiB we had to exclude a large number of individuals from the  
225 main MV models due to missing paternal BMI data. We therefore refitted models one and  
226 two without first excluding individuals with missing paternal BMI data (i.e. on larger samples),  
227 in order to explore potential selection bias.

#### 228 Genotyping, quality control and imputation

229 Mothers, offspring and (in ALSPAC only) fathers were genotyped using genome-wide arrays,  
230 followed by standard quality control (QC) measures (**Supplementary information S8**).  
231 Array genotypes were then imputed to the Haplotype Reference Consortium (HRC), 1000  
232 Genomes or UK10K reference panels (39-41) (**Supplementary information S8**). In order to  
233 maximize the sample size we did not exclude cryptically related individuals for the primary  
234 analyses. As a sensitivity analysis we removed cryptic relatedness at a level corresponding  
235 to first cousins by applying a KING (48) kinship coefficient threshold of 0.044 to the offspring  
236 using the PLINK software package version 2.00 (49, 50).

#### 237 Inference of maternal non-transmitted alleles

238 After conversion of imputed genotypes to hard calls (integer valued allele dosages) and  
239 application of QC filters (**Supplementary information S8**), we phased offspring imputed  
240 SNPs (for the sample of genotyped mother-offspring duos) using the duoHMM method  
241 implemented in the SHAPEIT v2 (r904) software package, with a window size of 5 Mb as per  
242 the authors recommendations for parent-offspring duos (42). This yielded maternal  
243 transmitted alleles (i.e. maternal alleles that were inherited by the offspring), which we used  
244 (along with the maternal genotypes) to infer the maternal non-transmitted alleles. For MR  
245 analyses we used PRS calculated from the maternal non-transmitted alleles (27), having first  
246 estimated SNP weights using maternal genotypes (see below).

#### 247 Polygenic risk score calculation

248 In order to maximise statistical power we used genome-wide SNPs to calculate a BMI PRS,  
249 as a weighted sum of BMI-increasing maternal non-transmitted alleles at SNPs across the  
250 genome. We tested four PRS methods (clumping and thresholding (43), LDpred (44),  
251 lassosum (45, 46) and the BOLT-LMM linear predictor (47)) (**Supplementary information**  
252 **S9**). Of these four methods, lassosum explained the highest proportion of variance ( $R^2$ ) for  
253 maternal BMI in both ALSPAC and BiB (which we refer to as the target datasets), therefore  
254 we used the lassosum PRS for subsequent MR analyses. Lassosum requires summary  
255 statistics from a genome wide association study (GWAS), which we refer to as the base  
256 dataset. We conducted a GWAS in the UK Biobank (UKB), a prospective cohort of 502,628  
257 volunteers (with 5% response rate of those invited), recruited from across the UK at age 40–  
258 69 years between 2006 and 2010 (48, 49) (**Supplementary information S9**). In order to  
259 avoid overfitting due to overlap between the base and target samples we excluded  
260 attendees of the Bristol or Leeds UKB assessment centres. We meta-analysed the summary  
261 statistics from the UKB GWAS with a published BMI GWAS from the GIANT consortium  
262 (50), giving a total base sample size of up to 756,048. We applied the lassosum algorithm to  
263 the meta-analysed base dataset; lassosum uses penalised regression to carry out shrinkage  
264 and selection on the base GWAS SNP effects and accounts for LD information from a  
265 reference panel. We used the ALSPAC or BiB datasets as the reference panels as per the  
266 authors' recommendations) (45). PLINK was used to calculate the PRS for ALSPAC and BiB

267 individuals using the lassosum SNP weights for around 80,000 SNPs (see **Table 2** for the  
268 exact number of SNPs for each cohort). We also calculated three PRS from fewer SNPs, to  
269 be used in sensitivity analyses to explore potential pleiotropic effects (see below). These  
270 PRS used (i) around 30 GWS SNPs identified in a 2010 BMI GWAS (51), (ii) around 90  
271 GWS SNPs identified in a 2015 BMI GWAS (50), and (iii) around 500 GWS SNPs identified  
272 as primary signals in a 2018 BMI GWAS (30). Full details of these analyses, including the  
273 exact number of SNPs used to calculate each PRS (which varied between samples) are  
274 given in **Supplementary information S10**.

### 275 Mendelian randomization

276 For the primary MR analyses we used the lassosum non-transmitted allele BMI PRS as an  
277 IV for maternal BMI and fitted models using the two-stage least squares (TSLS) method (22)  
278 (i.e. one sample MR). We included 20 genetic PCs as covariates in order to adjust for  
279 population stratification. We tested for a difference between the most extensively confounder  
280 adjusted MV estimates (model three) and MR estimates using a z-test (**Supplementary**  
281 **information S11**), and used a bootstrapping procedure to estimate the covariance between  
282 MV and MR estimates in order to calculate the z-statistic. Evidence for a difference between  
283 the two could reflect residual confounding in the MV analyses or violation of one or more of  
284 the MR assumptions.

### 285 Meta-analysis

286 We examined the point estimates,  $I^2$  statistics and Cochran's Q test P-values for the MV and  
287 MR associations and found little evidence for heterogeneity between ALSPAC, BiB South  
288 Asians and BiB White Europeans (**Supplementary information S12**). We therefore meta-  
289 analysed estimates from the three samples using a fixed effects model. Results were similar  
290 when we instead used a random effects model. For the meta-analyses we used the ratio  
291 estimator (calculated as the meta-analysed PRS-outcome regression coefficient  $\hat{\beta}_{ZY}$  divided  
292 by the meta-analysed PRS-exposure regression coefficient  $\hat{\beta}_{ZX}$ ; in the present study both  
293 coefficients were estimated in the same sample) which gives equivalent results to TSLS  
294 (52). We calculated the standard errors for the pooled MR estimates using a Taylor series  
295 approximation (53).

### 296 Checking MR assumptions

297 We checked the assumptions made by MR analyses (**Supplementary information S1**); if  
298 these assumptions are met then our MR estimates can be interpreted as causal effect  
299 estimates (22). We first assessed whether the PRS were associated with maternal BMI  
300 using the  $R^2$  and  $F$ -statistics. Next, we explored whether the PRS-outcome associations  
301 were confounded by ancestry (population stratification) using a linear mixed model (LMM).  
302 LMMs have been widely used in GWAS to adjust for population stratification and cryptic  
303 relatedness (54). We fitted models for the numerator and denominator of the ratio estimator  
304 separately, using the `--reml-est-fix` command in the GCTA software package (version  
305 1.91.7beta) (55). Further details of the LMM approach are given in **Supplementary**  
306 **information S13**. Finally, we conducted several analyses to explore whether the maternal  
307 PRS influences offspring adiposity via mechanisms other than intrauterine or  
308 periconceptional exposure to increased maternal BMI (horizontal pleiotropy). We first tested  
309 for associations of the PRS with other potential risk factors for the offspring outcomes (56).  
310 We would expect that the risk of pleiotropic bias might decrease as fewer SNPs are included  
311 in the IV. We therefore repeated MR analyses with IVs calculated from a single BMI-  
312 associated SNP (rs9939609 at the *FTO* locus, the locus at which there is currently the  
313 strongest evidence for association with BMI (30)), as well as the three PRS calculated from

314 only strongly BMI-associated (GWS) SNPs, as described above. Furthermore, most of the  
315 SNPs included in the lassosum BMI PRS had small effect sizes, and the consequences of  
316 this for the extent of horizontal pleiotropic effects are unclear (57), so we explored how MR  
317 estimates varied with varying SNP effect size distributions. We also tested for evidence of  
318 between-SNP MR estimate heterogeneity (Cochran's Q test) and used MR Egger regression  
319 (58) to investigate horizontal pleiotropy, for the analyses based on GWS SNPs. Finally, to  
320 investigate collider bias and bias due to assortative mating we examined the association  
321 between the maternal and paternal lassosum BMI PRS, in the subset of ALSPAC  
322 participants with paternal genotype data available ( $N = 1325$ ).

### 323 Other sensitivity analyses

324 We explored departure from linearity of the MV and MR associations by examining  
325 augmented partial residual plots with overlaid linear regression lines and nonparametric  
326 loess smoothers (59). The residuals from several models involving adolescent BMI and FMI  
327 variables were somewhat positively skewed so we repeated MV and MR analyses using the  
328 natural log of the relevant variables. We examined whether results differed for BW, BMI and  
329 ponderal index (weight [kg] / length [m]<sup>3</sup>) at birth (in ALSPAC only as birth length was not  
330 available in BiB). Finally, we tested for interaction by offspring sex for the MV and MR  
331 models. We carried out statistical analyses in R version 3.5.1 (60), and Stata version 13.1  
332 (StataCorp, College Station, TX, USA).

## 333 **Results**

### 334 Participant characteristics

335 **Table 1** shows the participant characteristics. The prevalence of maternal obesity (maternal  
336 BMI  $\geq 30$ ) was 5.5% (95% confidence interval [CI]: 4.9%, 6.1%) in ALSPAC and markedly  
337 higher in BiB South Asians (20.5% [95% CI: 18.9%, 22.2%]) and BiB White Europeans  
338 (26.0% [95% CI: 24.1%, 28.0%]). There were similar differences in mean maternal BMI  
339 between samples. Mean maternal age was highest in ALSPAC, lower in BiB South Asian  
340 participants and the lowest in BiB white participants, whilst mean offspring BW was greatest  
341 in ALSPAC, lower in BiB white participants and markedly lower in BiB South Asian  
342 participants ( $P$ -values for all comparisons described here  $< 6.9 \times 10^{-7}$ ). The samples for our  
343 analyses were smaller than those for the full cohorts at birth due to missing data, particularly  
344 for the MV associations. Despite this there were not large differences in the distributions of  
345 BW, maternal BMI or offspring sex between the baseline samples and those from which we  
346 calculated the MV estimates (**Supplementary information S14**). Furthermore, when we  
347 fitted MV models one and two on a larger sample (retaining individuals with missing paternal  
348 BMI) there were not large differences in the primary MV results (**Supplementary**  
349 **information S21**).

350



351 **Table 1:** Characteristics of the mothers and offspring in ALSPAC and BiB

Cohort	N	Exposure/outcome		Age at exposure/outcome assessment		Female offspring (%)		
		Mean	SD	Mean	SD			
ALSPAC	5085	Maternal BMI (kg/m <sup>2</sup> )	23.0	3.8	Maternal age at offspring birth (years)	29.3	4.5	
BiB (SA)	2262		25.8	5.5		28.8	5.0	
BiB (WE)	1992		26.9	6.0		27.4	6.0	
ALSPAC	5085	Birth weight (kg)	3.45	0.52	Gestational age at birth (weeks)	39.6	1.7	50.5
BiB (SA)	2262		3.12	0.49		39.1	1.5	47.9
BiB (WE)	1992		3.36	0.53		39.4	1.6	47.9
ALSPAC	4838	1yr BMI (kg/m <sup>2</sup> )	17.5	1.5	Age at BMI measurement (years)	0.9	0.2	50.6
BiB (SA)	2023		16.7	1.6		0.8	0.3	48.1
BiB (WE)	1798		17.4	1.6		0.8	0.3	47.8
ALSPAC	4670	4yr BMI (kg/m <sup>2</sup> )	16.1	1.5		4.1	0.7	50.2
BiB (SA)	1566		15.9	1.8		4.5	0.7	48.5
BiB (WE)	1339		16.4	1.5		4.5	0.7	48.6
ALSPAC	4476	10yr BMI (kg/m <sup>2</sup> )	17.7	2.8		9.9	0.5	51.3
ALSPAC	4112	15yr BMI (kg/m <sup>2</sup> )	21.0	3.5		15.0	0.8	51.7

352 **SA:** South Asians, **WE:** White Europeans, **SD:** standard deviations

353

354 Associations of genetic IVs with maternal BMI and offspring genotype

355 As we included more SNPs in the IV the  $R^2$  for maternal BMI increased markedly, from <1%  
 356 for the *FTO* IV to ~3–7% for the lassosum IV (**Table 2**). First-stage *F*-statistics were >75 for  
 357 all lassosum MR models (**Supplementary information S15**). The lassosum maternal non-  
 358 transmitted allele BMI PRS was not correlated with the offspring's PRS (results available  
 359 from the authors on request).

360 Associations of maternal BMI and BMI PRS with confounders/outcome risk factors

361 There was strong evidence in all three samples for associations between maternal BMI and  
 362 several other potential risk factors for the offspring outcomes, including parental occupation,  
 363 educational attainment, maternal parity and paternal BMI (results are summarised in **Table**  
 364 **2**, and full regression results including the direction of associations are given in  
 365 **Supplementary information S16–S19**). Genetic IVs based on fewer SNPs (i.e. <100  
 366 SNPs) were generally not associated with the outcome risk factors. In ALSPAC however  
 367 there was strong evidence for association of the lassosum IV (based on 80,939 SNPs) with  
 368 parental occupation, parental educational attainment, parental age, maternal smoking and  
 369 paternal BMI. These associations were mostly present for BiB White Europeans but absent  
 370 for BiB South Asians.

371 **Table 2:** Associations of maternal BMI with outcome risk factors, and of the genetic IVs (maternal  
372 non-transmitted alleles) with maternal BMI and outcome risk factors

	N SNPs	$R^2$ maternal BMI	Correlation with outcome risk factors <sup>a</sup>							
			Parental occupation	Maternal education	Paternal education	Maternal smoking	Parity	Paternal BMI	Maternal age	Paternal age
<b>ALSPAC</b>										
N		5157	4807	4826	4572	4891	5042	3766	5157	3593
Maternal BMI <sup>b</sup>			0.11***	-0.12***	-0.11***	-0.01	0.06**	0.16***	0.00 <sup>c</sup>	-0.01 <sup>c</sup>
Genetic IV										
<i>FTO</i>	1	0.36%	0.03*	-0.01	-0.01	0.00	0.02	-0.01	-0.01	0.00
Speliotes	31	0.89%	0.02	0.00	-0.03*	-0.01	0.02	0.01	0.00	0.01
Locke	87	1.02%	0.03	-0.01	-0.04*	-0.01	0.03*	0.01	0.00	0.00
Yengo	497	2.37%	0.04*	-0.04*	-0.05**	0.02	0.03	0.01	-0.02	-0.01
Lassosum	80939	6.61%	0.08***	-0.07***	-0.08***	0.07***	0.02	0.03*	-0.08***	-0.06**
<b>BiB (SA)</b>										
N		2267	1689	2259	2258	2262	2215	475	2267	583
Maternal BMI <sup>b</sup>			-0.10**	-0.08**	-0.03	0.01	0.15***	0.12*	-0.02 <sup>c</sup>	0.02 <sup>c</sup>
Genetic IV										
<i>FTO</i>	1	0.77%	-0.01	-0.01	0.00	-0.03	0.00	0.00	0.02	0.06
Speliotes	29	1.71%	-0.01	0.01	0.01	-0.04	0.00	-0.01	0.00	-0.05
Locke	82	1.33%	-0.04	0.02	0.03	-0.05*	-0.01	-0.06	0.00	0.02
Yengo	446	1.64%	-0.04	-0.04*	0.01	0.01	0.01	-0.03	-0.02	-0.03
Lassosum	79101	3.46%	-0.01	-0.02	-0.02	0.01	-0.02	-0.04	-0.04	-0.06
<b>BiB (WE)</b>										
N		2000	1587	2000	1999	1999	1951	639	2000	788
Maternal BMI <sup>b</sup>			-0.09**	-0.07*	0.01	0.01	0.11***	0.22***	0.00 <sup>c</sup>	0.04 <sup>c</sup>
Genetic IV										
<i>FTO</i>	1	0.56%	0.03	0.02	-0.01	0.00	0.00	0.03	0.00	-0.02
Speliotes	31	0.92%	0.05	0.01	0.03	-0.03	0.00	0.02	0.00	-0.01
Locke	86	1.16%	0.03	0.00	0.04	-0.01	-0.01	0.04	-0.02	-0.02
Yengo	453	1.78%	-0.01	0.00	0.05*	0.01	0.00	0.00	-0.03	0.00
Lassosum	79101	5.21%	-0.08*	-0.05*	0.04	0.07*	0.04	0.03	-0.07*	0.01

373

374 **a:** Pearson correlation coefficients are presented here to give an indication of the direction and  
375 magnitude of associations; full regression results are presented in **Supplementary information S16–**  
376 **S19**, \*  $P < 0.05$ , \*\*  $P < 0.001$ , \*\*\*  $P < 1e-5$ , **b:** age-standardised z-scores for maternal BMI, as per the  
377 primary analyses, **c:** maternal BMI is not correlated with maternal or paternal age because it was age-  
378 standardised, **SA:** South Asians, **WE:** White Europeans,  $R^2$ : proportion of maternal BMI variance  
379 explained by the IV (maternal non-transmitted allele scores), **FTO:** rs9939609 at the *FTO* locus,  
380 **Speliotes, Locke, Yengo:** PRS calculated from SNPs that reached genome wide significance in the  
381 BMI GWAS with the indicated first author, **Lassosum:** PRS calculated by the lassosum method

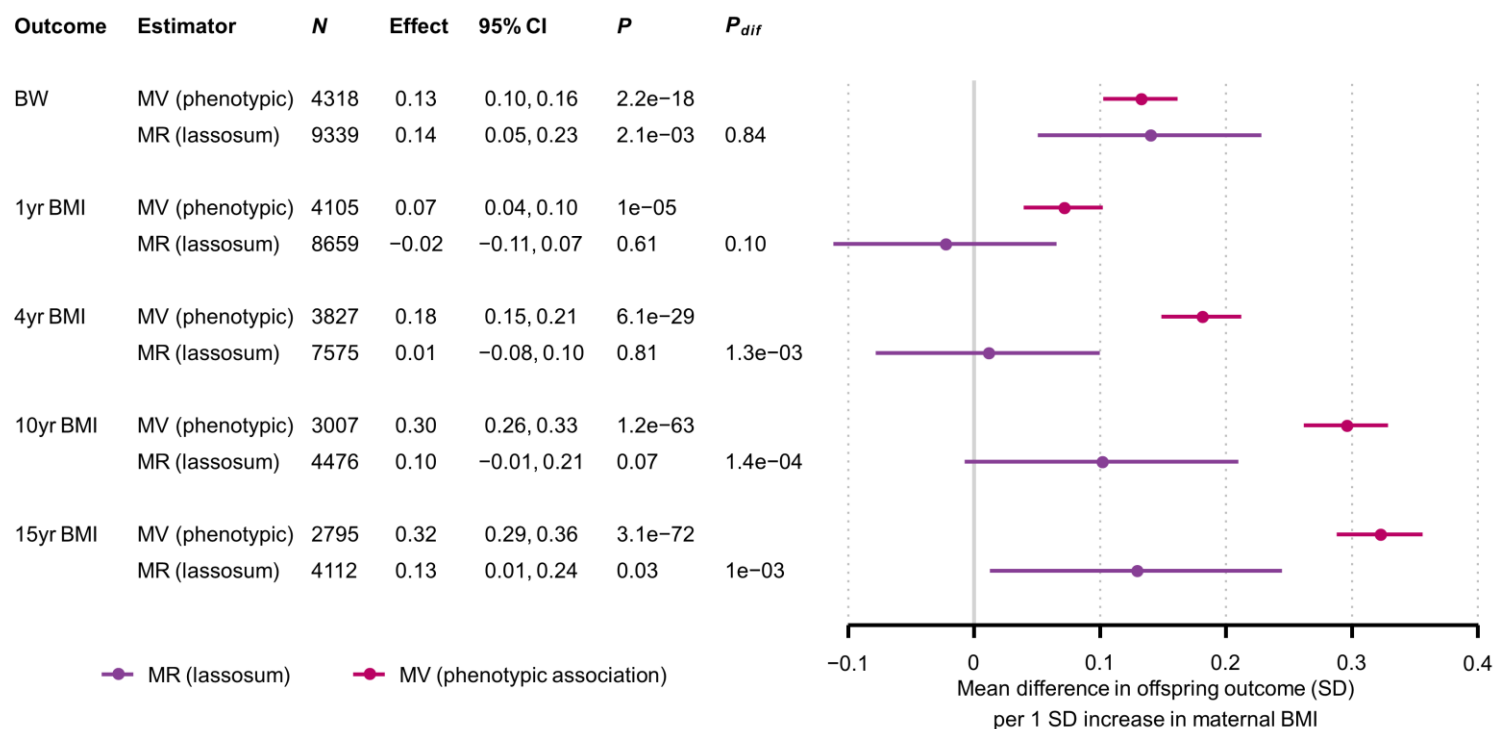
## 382 Confounder adjusted MV regression and MR results

383 In confounder adjusted MV regression models maternal BMI was positively associated with  
384 all offspring outcomes (**Figure 1, Supplementary information S20**; meta-analysis  
385 heterogeneity statistics are given in **Supplementary information S12**). When we meta-  
386 analysed MV estimates from all three samples, a 1 SD higher age-adjusted maternal BMI  
387 was associated with a 0.13 (95% CI: 0.10, 0.16) SD higher sex adjusted BW; the  
388 corresponding estimates for 1 and 4 year age- and sex-adjusted BMI were 0.07 (0.04, 0.10)  
389 and 0.18 (0.15, 0.21) respectively. For ALSPAC, the MV estimate for 15 year BMI was 0.32  
390 (0.29, 0.36), and estimates were similar for 10 year BMI and FMI from 10–18 years.  
391 Adjustment for potential confounders had a negligible impact on the estimates, aside from a  
392 small attenuation on adjustment for paternal BMI for outcomes after birth. Results were  
393 similar when we refitted MV models one and two on larger samples without excluding  
394 individuals with missing paternal BMI data (**Supplementary information S21**). Additional  
395 adjustment for gestational age at birth or 20 genetic PCs had a negligible effect  
396 (**Supplementary information S22, S23**), and there was not a large difference when BMI or  
397 ponderal index at birth was substituted for BW in ALSPAC (**Supplementary information**  
398 **S24**).

399 For BW the MR estimate for the lassosum PRS for all three samples meta-analysed was  
400 0.14 (0.05, 0.23), which was similar to the MV estimate;  $P_{\text{difference (MV vs. MR)}} = 0.84$ ) (**Figure 1**).  
401 The corresponding lassosum MR estimates for 1 year BMI and 4 year BMI were -0.02 (-0.11,  
402 0.07) and 0.01 (-0.08, 0.10) respectively, and there was moderate to strong evidence for an  
403 MR-MV difference ( $P_{\text{difference}} = 0.10$  and  $1.3e-3$  respectively). The MR estimates for 10 and 15  
404 year BMI in ALSPAC (0.10 [-0.01, 0.21] and 0.13 [0.01, 0.24] respectively) were also smaller  
405 than the MV estimates ( $P_{\text{difference}} = 1.4e-4$  and  $1.0e-3$  respectively). Results for FMI were  
406 similar to those for BMI (**Supplementary information S25**). We did not observe strong  
407 evidence for non-linearity or interaction by sex for either the MV or MR models (results  
408 available from the authors), and results were similar when we (i) substituted BMI or ponderal  
409 index at birth for BW (**Supplementary information S25**), (ii) natural log transformed skewed  
410 variables (results available from the authors), (iii) removed cryptic relatedness from the  
411 sample (results available from the authors), and (iv) used linear mixed models to adjust for  
412 population structure (**Supplementary information S26**). In linear regression models (as  
413 opposed to two-stage least squares regression) there was strong to moderate evidence that  
414 the lassosum maternal non-transmitted allele BMI PRS was associated with offspring BW  
415 and adolescent adiposity (**Supplementary information S27, S28**).

416

417 **Figure 1:** Mean difference in offspring outcomes (SD) per 1SD increase in maternal BMI, from MR  
 418 (lassosum) and confounder adjusted multivariable regression (MV) models



419 Confounder adjusted multivariable regression (MV) estimates are from model three (**Methods**).  $P$ :  $P$ -  
 420 value for the null hypothesis that the effect equals zero,  $P_{dif}$ :  $P$ -value for the null hypothesis that MR  
 421 effect equals the MV effect.

#### 422 MR estimates for IVs with fewer SNPs

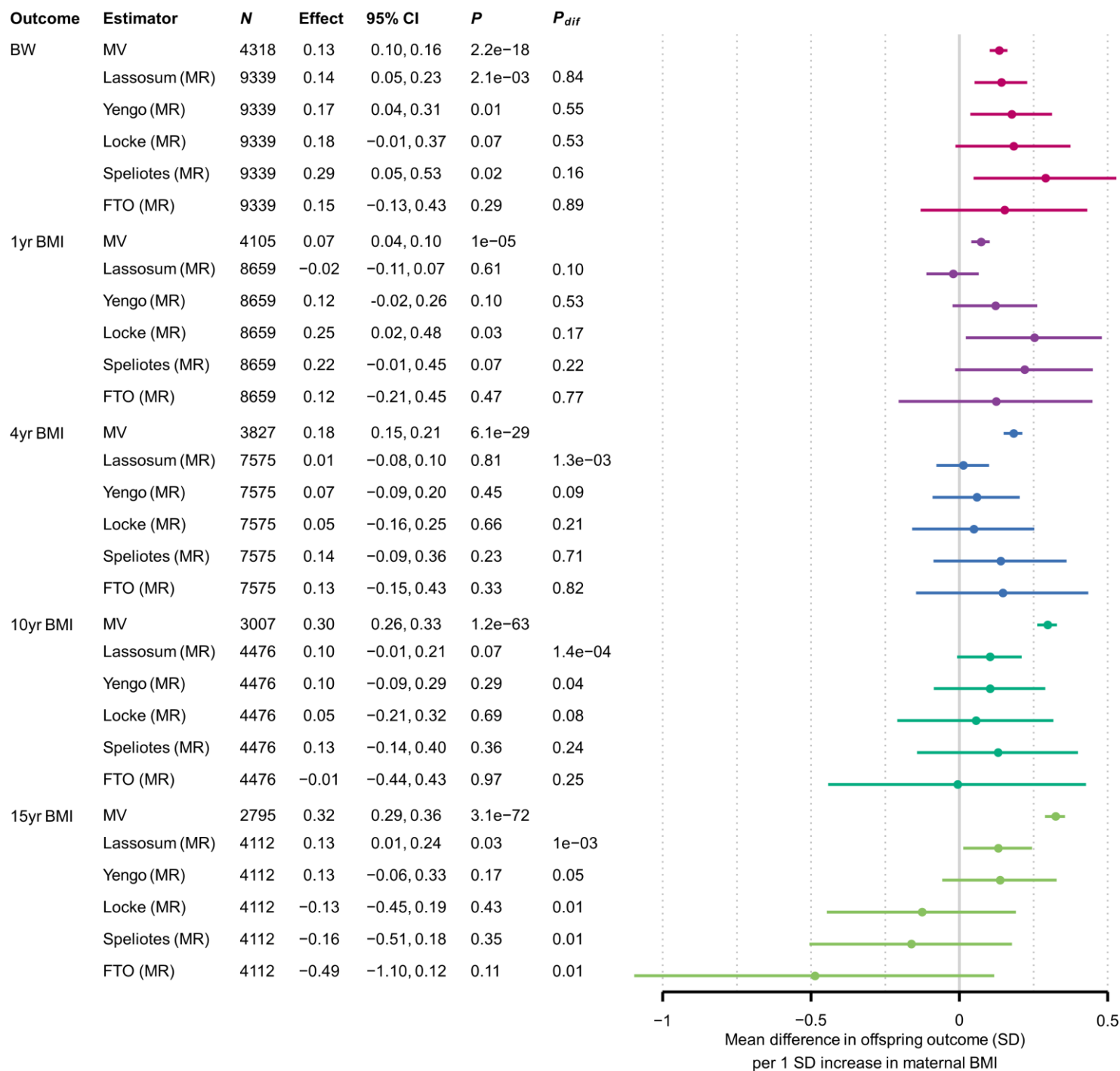
423 When we replaced the lassosum PRS with alternative IVs calculated from fewer SNPs, our  
 424 MR estimates varied in a manner that was specific to the offspring outcome (**Figure 2**). For  
 425 BW, including fewer SNPs in the IV did not result in large differences in the MR estimates,  
 426 although the precision reduced markedly as we used fewer SNPs. For 1 and 4 year BMI, MR  
 427 estimates increased as we used fewer SNPs, whereas for 10 year BMI they largely  
 428 remained stable and for 15 year BMI they decreased. The patterns for FMI were similar to  
 429 those for BMI (**Supplementary information S25**). For all outcomes apart from BW,  
 430 including more SNPs in the IV resulted in stronger evidence that MR estimates differed from  
 431 MV estimates (i.e. smaller  $P_{dif}$ ).

#### 432 MR estimates for SNPs with differing effect size distributions, between-SNP heterogeneity 433 and MR Egger results

434 For the majority of outcomes (particularly in adolescence) there was moderate to strong  
 435 statistical evidence that SNPs with smaller effect sizes gave larger (more positive) MR  
 436 estimates, and this was not driven by weak instrument bias (**Supplementary information**  
 437 **S29**). When using only large-effect (GWS) SNPs, in general there was not strong statistical  
 438 evidence for between-SNP MR estimate heterogeneity (Cochran's Q), nor was there strong  
 439 evidence that the MR-Egger intercept differed from zero (**Supplementary information S30**).

440

441 **Figure 2:** Mean difference in offspring outcomes (SD) per 1SD increase in maternal BMI, from MR  
 442 models using different SNP sets and confounder adjusted multivariable regression (MV) models



443 Confounder adjusted multivariable regression (MV) estimates are from model three (**Methods**).  $P$ :  $P$ -  
 444 value for the null hypothesis that the effect equals zero,  $P_{dif}$ :  $P$ -value for the null hypothesis that MR  
 445 effect equals the MV effect, **FTO**: rs9939609 at the *FTO* locus, **Speliotes**, **Locke**, **Yengo**: GWS  
 446 SNPs from the GWAS with the indicated first author, **Lassosum**: PRS calculated by the lassosum  
 447 method. Colours denote outcomes

#### 448 Parental phenotypic and PRS correlations

449 In ALSPAC there was strong evidence for correlation between maternal and paternal BMI  
450 (Pearson's  $r$ : 0.22, 95% CI: 0.16, 0.28,  $P = 7.9e-14$ ), but no evidence for correlation between  
451 maternal non-transmitted allele and paternal lassosum BMI PRS ( $r$ : 0.02, 95% CI: -0.04,  
452 0.07,  $P = 0.55$ ). For comparison, a maternal lassosum BMI PRS that was calculated from  
453 both transmitted and non-transmitted alleles was slightly more strongly correlated with the  
454 paternal PRS ( $r$ : 0.04, 95% CI: -0.01, 0.10,  $P = 0.14$ ).

#### 455 **Discussion**

456 We applied a Mendelian randomization (MR) approach using PRS calculated from maternal  
457 non-transmitted alleles, to explore the causality of associations between maternal pre-/early-  
458 pregnancy BMI and offspring birth weight (BW) and child/adolescent adiposity. For the  
459 association between maternal BMI and offspring BW, our MR and confounder adjusted  
460 multivariable regression (MV) estimates were similar. In contrast, for offspring adiposity  
461 outcomes beyond 1 year of age the MR estimates were weaker than the MV estimates.  
462 These results markedly strengthen evidence that confounder adjusted observational  
463 associations between maternal BMI and offspring adolescent adiposity are subject to  
464 residual confounding. We found no strong evidence for a causal effect of maternal BMI on  
465 offspring adiposity beyond birth, although based on the present results we cannot rule out a  
466 small to moderate causal effect.

467 Our data build on two previous MR studies which investigated associations between  
468 maternal BMI and offspring child/adolescent adiposity (14, 23), and a methodological paper  
469 which presented a limited investigation of adiposity outcomes as an empirical example (25).  
470 Although the previous studies provided no strong evidence for a causal effect, they were  
471 limited by wide confidence intervals and/or potential biases (see **Strengths and Limitations**  
472 below). The present study overcame these limitations by using more powerful PRS and a  
473 maternal non-transmitted allele score approach. For the association between maternal BMI  
474 and offspring BW, our MR and MV estimates were highly concordant, in agreement with  
475 previous MR studies that supported a causal effect of greater maternal BMI on greater  
476 offspring BW (28, 34). We have previously shown that genetic confounding (i.e. confounding  
477 due to direct effects of maternal alleles inherited by the offspring) is unlikely to explain the  
478 association of maternal BMI with BW, but may potentially be important for the association  
479 with adolescent BMI (61). The present results are consistent with this, as well as with the  
480 balance of evidence from negative paternal exposure control studies (12-18) and within  
481 sibship analyses (19, 20), which suggests that familial confounding is an important  
482 explanation of the maternal BMI-offspring child/adolescent adiposity association. Studies  
483 that examined the effect of extreme maternal obesity using a pre- and post-bariatric surgery  
484 design (62-65) have small sample sizes and have not been entirely consistent, therefore do  
485 not provide strong evidence against this conclusion.

486 Although we found no strong evidence for a causal effect in late childhood/adolescence, we  
487 cannot rule out a small to moderate causal effect, due to the imprecision of our MR  
488 estimates. Indeed, the primary lassosum MR estimates were greater than zero for 15 year  
489 BMI and 14–18 year FMI. We do not interpret these as unbiased estimates for the causal  
490 effect of maternal BMI, because of the possibility of pleiotropic bias (see below). These  
491 results do suggest however that some maternal exposure(s) that are correlated with the  
492 maternal BMI PRS have a causal effect on offspring child/adolescent adiposity, although our  
493 analyses are unable to distinguish whether this is a pre or postnatal effect. Plausible  
494 mechanisms include intrauterine effects such as fetal overnutrition (1) and postnatal effects  
495 such as maternal influence on offspring eating behaviour (66), but other mechanisms have

496 been hypothesised, including periconceptional effects (such as altered oocyte structure or  
497 function (3)). In linear regression analyses we found moderate to strong evidence for  
498 associations between the maternal non-transmitted allele BMI PRS and offspring adolescent  
499 adiposity. Such associations are due to indirect effects of maternal genotype on offspring  
500 adiposity, mediated via the offspring's pre or postnatal environment (67) (also known as  
501 genetic nurture (68), dynastic effects (69) and social genetic effects (70)). These observed  
502 maternal genetic effects merit further investigation in other datasets, particularly as previous  
503 studies have not found evidence for parental genetic effects on BMI in childhood (71) or  
504 adulthood (68).

505 In ALSPAC and BiB White Europeans we observed associations between the maternal BMI  
506 PRS and variables that are often considered to be potential confounders in epidemiological  
507 studies, including parental occupation, education, age and maternal smoking. Such  
508 associations were largely absent for the IVs calculated from fewer SNPs, and in BiB South  
509 Asians (although it is notable that in BiB South Asians the genetic IVs explained less  
510 maternal BMI variance). These results invite careful consideration of which of the ever-  
511 increasing number of GWS associated BMI SNPs are likely (in combinations) to be the most  
512 valid instruments for MR studies, having taken account of all IV assumptions. Such  
513 considerations may also extend to other exposures, in line with concerns raised by other  
514 authors (32, 57, 72, 73).

#### 515 Strengths and limitations

516 Our study has several key strengths. We studied two prospective birth cohorts with maternal  
517 and offspring genome-wide genotype data, maternal BMI measurements and offspring  
518 adiposity outcomes available, allowing us to conduct mother-offspring MR analyses. We  
519 used state-of-the-art methods to calculate a powerful PRS from around 80,000 SNPs. This  
520 yielded a substantial increase in statistical power over previous MR studies, which analysed  
521 similar ALSPAC datasets to ours, but employed either a single SNP in the *FTO* gene (14) or  
522 allele scores calculated from up to 97 SNPs (23, 25) (similar to the “Speliotes” and “Locke”  
523 IVs in the present analysis). Our primary lassosum PRS explained 3–7% of maternal BMI  
524 variance, compared to ~1.5% for the strongest IVs used previously (power calculations are  
525 given in **Supplementary information S31**).

526 Another strength over previous work is our use of maternal non-transmitted allele PRS,  
527 thereby avoiding the need to control for genetic inheritance by adjusting for offspring  
528 genotype. A previous methodological paper made limited use of this approach (25), but  
529 investigated a far smaller subset of adiposity outcomes than that which we have explored  
530 here. Controlling for offspring genotype may be suboptimal for two distinct reasons: (i) it may  
531 introduce collider bias if paternal genotype influences the offspring outcome independently of  
532 offspring genotype (i.e. if paternal genetic effects exist) (25, 74), and (ii) if the investigator  
533 adjusts for a *weighted* allele score, this may introduce bias by inadequately blocking the  
534 genetic inheritance path (24). Because these two biases may be in opposite directions, the  
535 net direction of any bias affecting the largest previous study (23) is uncertain. We  
536 acknowledge that our primary MR estimates may be affected by pleiotropic bias due to the  
537 large number of SNPs, many of which had small effect sizes, that we used to calculate the  
538 PRS. This possibility is also suggested by the associations that we observed between the  
539 lassosum BMI PRS and several potential confounders of the maternal BMI-offspring  
540 adiposity association. However, sensitivity analyses suggested that for most outcomes such  
541 bias is likely to be away from zero, which would weaken the apparent evidence for an MR-  
542 MV difference (**Supplementary information S29, S30**). Thus, our primary MR results are  
543 conservative, in that they may overstate the size of the causal effect (which we hypothesised

544 to be zero). The fact that for 10 and 15 year BMI, using more SNPs yielded increased  
545 precision and stronger evidence for an MR-MV difference (**Figure 2**), despite the potential  
546 pleiotropic bias away from zero, illustrates the benefit of our approach.

547 We also conducted extensive sensitivity analyses to explore other potential biases in our  
548 results. When we used a linear mixed model (LMM) to adjust for population structure the  
549 results were similar to our primary estimates. We did not remove cryptic relatedness for our  
550 primary analyses, in order to maximise the sample size and because the LMM controls for  
551 bias due to cryptic relatedness (54). However, results were similar when we removed cryptic  
552 relatedness at a level corresponding to first cousins. Finally, we found no strong evidence  
553 that maternal and paternal lassosum BMI PRS were correlated, suggesting that our results  
554 are not importantly biased due to assortative mating.

555 We acknowledge several other limitations of our study. First, although the results in BiB and  
556 ALSPAC were similar, replication in other cohorts with suitable data, and in particular with  
557 adolescent adiposity measures (which we could only examine in ALSPAC) would be  
558 valuable. A previous study meta-analysed data from ALSPAC and the Generation R cohort  
559 using 32 maternal SNPs (23), but we were unable to extend our approach to Generation R  
560 due to the unavailability of maternal genome-wide SNP data. We have only studied UK  
561 participants. However, the similarity of findings between White European and South Asian  
562 BiB participants, and between BiB (a cohort with high levels of deprivation born during the  
563 obesity epidemic) and ALSPAC (more affluent than the UK average) suggest that our  
564 findings may be generalisable to other populations. Second, BMI (especially self-reported  
565 BMI) is an imperfect proxy measure for adiposity. However, it has been shown previously in  
566 ALSPAC that self-reported pre-pregnancy BMI is strongly correlated with BMI measured in  
567 early pregnancy (23), and that any misreporting does not markedly differ by mean weight  
568 (75). There is also evidence that the correlation with directly measured adiposity is strong for  
569 child and adult BMI (76, 77) and moderate for neonatal weight (78); furthermore, our results  
570 were similar for DXA derived FMI. Third, we assumed that causal relationships between  
571 exposures and outcomes were linear. Although our data provided no evidence for non-  
572 linearity, a slight plateauing of the observational association between maternal BMI and  
573 offspring child/adolescent BMI at higher maternal BMI levels was previously observed in a  
574 large meta-analysis (6). MR estimates such as ours, which assume linearity, nevertheless  
575 approximate the population-averaged causal effect (which is the average effect resulting  
576 from a unit increase in the exposure for all individuals in the population, regardless of their  
577 initial exposure level) (79). However, given the shape of the observational association (6) it  
578 is plausible that our MR estimates overstate the true causal effect for mothers with  
579 overweight/obesity. Finally, the samples used for some of our analyses were smaller than  
580 the full samples at baseline due to missing data and loss to follow up. This was particularly  
581 the case for BiB MV models, because in BiB BMI data were only available for a minority of  
582 fathers. This raises the possibility that our results are affected by selection bias, which can  
583 occur even for studies such as ours which estimate genetic effects (80). However, the  
584 distributions of maternal BMI, BW and offspring sex were similar for the samples used for  
585 our analyses and the samples at baseline, and MV results were similar when we refitted  
586 models on larger samples without excluding individuals with missing paternal BMI data. It  
587 therefore seems unlikely that selection bias would be of sufficient magnitude to alter our  
588 conclusions.

## 589 Conclusion

590 We explored the causality of associations between maternal pre-/early-pregnancy BMI and  
591 offspring BW and child/adolescent adiposity, using an MR approach with PRS calculated



592 from maternal non-transmitted alleles. This approach yielded narrower confidence intervals  
593 compared with previous studies, and avoided sources of bias that may have affected  
594 previous work. We found no strong evidence for a causal effect of maternal BMI on offspring  
595 adiposity beyond birth, but strong evidence that confounder adjusted observational  
596 associations between maternal BMI and adolescent adiposity are affected by residual  
597 confounding. Although we cannot rule out a small or moderate causal effect on  
598 child/adolescent adiposity, the present study suggests that higher maternal pre-/early-  
599 pregnancy BMI is not a key driver of greater adiposity in the next generation. Thus, our  
600 results support interventions that target the whole population for reducing overweight and  
601 obesity, rather than a specific focus on women of reproductive age.

602 **Author contributions**

603 Conceptualization: TAB, MRJ, DAL

604 Methodology: DAL, VZ, PFO, MG, AL, SS, DME, MRJ

605 Software: TAB, RCR, VK, GCP

606 Formal analysis: TAB

607 Data curation: TAB, IT, AD, ACA, DM, TY, MCB

608 Writing- original draft preparation: TAB, MRJ, DAL, RCR, PFO

609 Writing- review and editing: TAB, MRJ, DAL, RCR, PFO, VZ, MG, AL, SS, IT, AD, DM, TY,  
610 VK, ACA, GCP, DME, MCB

611 This publication is the work of the authors and TAB, MRJ and DAL will serve as guarantors  
612 for the contents of this paper.

613 **Conflict of interest**

614 DAL has received support from numerous national and international government and charity  
615 funders and from Medtronic LTD and Roche Diagnostics for research unconnected with that  
616 presented in this study. GCP is an employee of 23andMe Inc and may hold stock or stock  
617 options. All other authors report no conflict of interest.

618 **Acknowledgements**

619 We thank Tom Palmer, Eleanor Sanderson and Stephen Burgess for helpful discussions,  
620 Mark Iles for provision of BiB ethnicity variables and Amanda Hill and David Hughes for  
621 support in delivery and management of the ALSPAC data. We gratefully acknowledge the  
622 GIANT (Genetic Investigation of ANthropometric Traits) Consortium for making GWAS  
623 summary statistics available. This publication is the work of the authors and may not reflect  
624 the views of those acknowledged here.

625 We are extremely grateful to all the families who took part in ALSPAC, the midwives for their  
626 help in recruiting them, and the whole ALSPAC team, which includes interviewers, computer  
627 and laboratory technicians, clerical workers, research scientists, volunteers, managers,  
628 receptionists and nurses. Born in Bradford is only possible because of the enthusiasm and  
629 commitment of the Children and Parents in BiB. We are grateful to all the participants, health  
630 professionals and researchers who have made Born in Bradford happen. We gratefully  
631 acknowledge the contribution of TPP and the TPP ResearchOne team in completing study  
632 participant matching to GP primary care records and in providing ongoing informatics  
633 support. This research has been conducted using the UK Biobank Resource under  
634 applications 10035, 13436 and 236 granting access to the corresponding UK Biobank  
635 genetic and phenotype data. We are extremely grateful to all the UK Biobank participants,  
636 investigators and team members.

637 **Data availability**

638 The ALSPAC study website (<http://www.bristol.ac.uk/alspac/researchers/our-data/>) contains  
639 details of all the data that are available through a fully searchable data dictionary and  
640 variable search tool. Scientists are encouraged and able to use BiB data. Data requests are  
641 made to the BiB executive using the form available from the study website  
642 <http://www.borninbradford.nhs.uk> (please click on 'Science and Research' to access the  
643 form). Guidance for researchers and collaborators, the study protocol and the data collection

644 schedule are all available via the website. All requests are carefully considered and  
645 accepted where possible. UK Biobank data are available from the UK Biobank  
646 (<http://biobank.ndph.ox.ac.uk/showcase/>).

## 647 Funding

648 The UK Medical Research Council and Wellcome (102215/2/13/2) and the University of  
649 Bristol provide core support for ALSPAC. Genotyping of the ALSPAC maternal samples was  
650 funded by the Wellcome Trust (WT088806) and the offspring samples were genotyped by  
651 Sample Logistics and Genotyping Facilities at the Wellcome Trust Sanger Institute and  
652 LabCorp (Laboratory Corporation of America) using support from 23andMe. A  
653 comprehensive list of grants funding is available on the ALSPAC website  
654 (<http://www.bristol.ac.uk/alspac/external/documents/grant-acknowledgements.pdf>). BiB  
655 receives core infrastructure funding from the Wellcome Trust (WT101597MA), a joint grant  
656 from the UK Medical Research Council (MRC) and UK Economic and Social Science  
657 Research Council (ESRC) (MR/N024397/1), the British Heart Foundation (CS/16/4/32482)  
658 and the National Institute for Health Research (NIHR) under its Collaboration for Applied  
659 Health Research and Care (CLAHRC) for Yorkshire and Humber. Further support for  
660 genome-wide data is from the UK Medical Research Council (G0600705) and the National  
661 Institute of Health Research (NF-SI-0611-10196). The work presented here was also  
662 supported by the US National Institute of Health (R01 DK10324), the European Research  
663 Council under the European Union's Seventh Framework Programme (FP7/2007-2013)/ERC  
664 grant agreement (669545) and the British Heart Foundation (AA/18/7/34219). TAB is  
665 supported by the Medical Research Council (MRC) (UK) (MR/K501281/1), TAB and DME  
666 are supported by the NHMRC (Australia) (GNT1183074 and GNT1157714), DAL, TAB and  
667 RCR work in/are affiliated with a unit that is supported by the UK Medical Research Council  
668 (MC\_UU\_00011/1 & MC\_UU\_00011/6) and DAL is a NIHR Senior Investigator (NF-0616-  
669 10102). DAL and TAB are supported by the British Heart Foundation Accelerator Award at  
670 the University of Bristol (AA/18/7/34219). VK is funded by the European Union's Horizon  
671 2020 research and innovation program under the Marie Skłodowska-Curie grant (721567).  
672 MRJ is funded by EU-H2020 LifeCycle Action (733206), EU-H2020 EDCMET (825762), EU-  
673 H2020 EUCAN Connect (824989), EU H2020-MSCA-ITN-2016 CAPICE Marie Skłodowska-  
674 Curie grant (721567) and the MRC (UK) (MRC/BBSRC and MR/S03658X/1 [JPI HDHL]).  
675 RCR is a de Pass Vice Chancellor's Research Fellow at the University of Bristol. AL and  
676 MRJ are supported by the MRC (UK) (MR/M013138/1) and the European Union Horizon  
677 2020 programme (633595). The funders had no role in study design, data collection and  
678 analysis, decision to publish, or preparation of the manuscript.

## 679 References

- 680 1. Lawlor DA. The Society for Social Medicine John Pemberton Lecture 2011.  
681 Developmental overnutrition—an old hypothesis with new importance? *Int J Epidemiol.*  
682 2013;42(1):7-29.
- 683 2. Godfrey KM, Reynolds RM, Prescott SL, *et al.* Influence of maternal obesity on the  
684 long-term health of offspring. *Lancet Diabetes Endo.* 2017;5(1):53-64.
- 685 3. Fleming TP, Watkins AJ, Velazquez MA, *et al.* Origins of lifetime health around the  
686 time of conception: causes and consequences. *The Lancet.* 2018;391(10132):1842-52.
- 687 4. Larqué E, Labayen I, Flodmark C-E, *et al.* From conception to infancy—early risk  
688 factors for childhood obesity. *Nature Reviews Endocrinology.* 2019:1.
- 689 5. Voerman E, Santos S, Golab BP, *et al.* Maternal body mass index, gestational weight  
690 gain, and the risk of overweight and obesity across childhood: An individual participant data  
691 meta-analysis. *PLoS Med.* 2019;16(2):e1002744.

- 692 6. Heslehurst N, Vieira R, Akhter Z, *et al.* The association between maternal body mass  
693 index and child obesity: A systematic review and meta-analysis. *PLoS Med.*  
694 2019;16(6):e1002817.
- 695 7. Reynolds RM, Allan KM, Raja EA, *et al.* Maternal obesity during pregnancy and  
696 premature mortality from cardiovascular event in adult offspring: follow-up of 1 323 275  
697 person years. *BMJ.* 2013;347:f4539.
- 698 8. Lahti-Pulkkinen M, Bhattacharya S, Wild SH, *et al.* Consequences of being  
699 overweight or obese during pregnancy on diabetes in the offspring: a record linkage study in  
700 Aberdeen, Scotland. *Diabetologia.* 2019:1-8.
- 701 9. Friedman JE. Developmental programming of obesity and diabetes in mouse,  
702 monkey, and man in 2018: where are we headed? *Diabetes.* 2018;67(11):2137-51.
- 703 10. Poston L. Maternal obesity, gestational weight gain and diet as determinants of  
704 offspring long term health. *Best Practice & Research Clinical Endocrinology & Metabolism.*  
705 2012;26(5):627-39.
- 706 11. Lawlor DA, Tilling K, Davey Smith G. Triangulation in aetiological epidemiology. *Int J*  
707 *Epidemiol.* 2016;45(6):1866-86.
- 708 12. Fleten C, Nystad W, Stigum H, *et al.* Parent-offspring body mass index associations  
709 in the Norwegian Mother and Child Cohort Study: a family-based approach to studying the  
710 role of the intrauterine environment in childhood adiposity. *Am J Epidemiol.* 2012;176(2):83-  
711 92.
- 712 13. Patro B, Liber A, Zalewski B, Poston L, Szajewska H, Koletzko B. Maternal and  
713 paternal body mass index and offspring obesity: a systematic review. *Ann Nutr Metab.*  
714 2013;63(1-2):32-41.
- 715 14. Lawlor DA, Timpson NJ, Harbord RM, *et al.* Exploring the developmental  
716 overnutrition hypothesis using parental-offspring associations and FTO as an instrumental  
717 variable. *PLoS Med.* 2008;5(3):e33.
- 718 15. Gaillard R, Steegers EA, Duijts L, *et al.* Childhood cardiometabolic outcomes of  
719 maternal obesity during pregnancy: The Generation R Study. *Hypertension.* 2014;63(4):683-  
720 91.
- 721 16. Santos Ferreira DL, Williams DM, Kangas AJ, *et al.* Association of pre-pregnancy  
722 body mass index with offspring metabolic profile: Analyses of 3 European prospective birth  
723 cohorts. *PLoS Med.* 2017;14(8):e1002376.
- 724 17. Zalbazar N, Najman J, McIntyre HD, Mamun A. Parental pre-pregnancy BMI  
725 influences on offspring BMI and waist circumference at 21 years. *Aust N Z J Public Health.*  
726 2016;40(6):572-8.
- 727 18. Sørensen TI, Ajslev TA, Ängquist L, Morgen CS, Ciuchi IG, Smith GD. Comparison  
728 of associations of maternal peri-pregnancy and paternal anthropometrics with child  
729 anthropometrics from birth through age 7 y assessed in the Danish National Birth Cohort.  
730 *Am J Clin Nutr.* 2016;104(2):389-96.
- 731 19. Branum AM, Parker JD, Keim SA, Schempf AH. Prepregnancy body mass index and  
732 gestational weight gain in relation to child body mass index among siblings. *Am J Epidemiol.*  
733 2011:kwr250.
- 734 20. Lawlor DA, Lichtenstein P, Långström N. Association of Maternal Diabetes Mellitus in  
735 Pregnancy With Offspring Adiposity Into Early Adulthood: Clinical Perspective. *Circulation.*  
736 2011;123(3):258-65.
- 737 21. Davey Smith G, Ebrahim S. 'Mendelian randomization': can genetic epidemiology  
738 contribute to understanding environmental determinants of disease? *Int J Epidemiol.*  
739 2003;32(1):1-22.
- 740 22. Lawlor DA, Harbord RM, Sterne JA, Timpson N, Davey Smith G. Mendelian  
741 randomization: using genes as instruments for making causal inferences in epidemiology.  
742 *Stat Med.* 2008;27(8):1133-63.
- 743 23. Richmond RC, Timpson NJ, Felix JF, *et al.* Using genetic variation to explore the  
744 causal effect of maternal pregnancy adiposity on future offspring adiposity: a Mendelian  
745 randomisation study. *PLoS Med.* 2017;14(1):e1002221.
- 746 24. Wang G, Warrington N, Evans DM. *Personal communication.* 2020.

- 747 25. Lawlor D, Richmond R, Warrington N, *et al.* Using Mendelian randomization to  
748 determine causal effects of maternal pregnancy (intrauterine) exposures on offspring  
749 outcomes: Sources of bias and methods for assessing them. *Wellcome Open Research*.  
750 2017;2.
- 751 26. Ebbeling CB, Pawlak DB, Ludwig DS. Childhood obesity: public-health crisis,  
752 common sense cure. *The Lancet*. 2002;360(9331):473-82.
- 753 27. Zhang G, Bacelis J, Lengyel C, *et al.* Assessing the causal relationship of maternal  
754 height on birth size and gestational age at birth: a mendelian randomization analysis. *PLoS*  
755 *Med*. 2015;12(8):e1001865.
- 756 28. Chen J, Bacelis J, Sole-Navais P, *et al.* Dissecting maternal and fetal genetic effects  
757 underlying the associations between maternal phenotypes, birth outcomes, and adult  
758 phenotypes: A mendelian-randomization and haplotype-based genetic score analysis in  
759 10,734 mother–infant pairs. *PLoS Med*. 2020;17(8):e1003305.
- 760 29. Brion M-JA, Shakhbazov K, Visscher PM. Calculating statistical power in Mendelian  
761 randomization studies. *Int J Epidemiol*. 2012;42(5):1497-501.
- 762 30. Yengo L, Sidorenko J, Kemper KE, *et al.* Meta-analysis of genome-wide association  
763 studies for height and body mass index in ~700000 individuals of European ancestry. *Hum*  
764 *Mol Genet*. 2018;27(20):3641-9.
- 765 31. Khera AV, Chaffin M, Wade KH, *et al.* Polygenic prediction of weight and obesity  
766 trajectories from birth to adulthood. *Cell*. 2019;177(3):587-96. e9.
- 767 32. Evans DM, Brion MJA, Paternoster L, *et al.* Mining the human phenome using allelic  
768 scores that index biological intermediates. *PLoS Genetics*. 2013;9(10):e1003919.
- 769 33. Evans DM, Visscher PM, Wray NR. Harnessing the information contained within  
770 genome-wide association studies to improve individual prediction of complex disease risk.  
771 *Hum Mol Genet*. 2009;18(18):3525-31.
- 772 34. Tyrrell J, Richmond RC, Palmer TM, *et al.* Genetic evidence for causal relationships  
773 between maternal obesity-related traits and birth weight. *JAMA*. 2016;315(11):1129-40.
- 774 35. Fraser A, Macdonald-Wallis C, Tilling K, *et al.* Cohort profile: the Avon Longitudinal  
775 Study of Parents and Children: ALSPAC mothers cohort. *Int J Epidemiol*. 2012;42(1):97-110.
- 776 36. Boyd A, Golding J, Macleod J, *et al.* Cohort profile: the 'children of the 90s'—the  
777 index offspring of the Avon Longitudinal Study of Parents and Children. *Int J Epidemiol*.  
778 2013;42(1):111-27.
- 779 37. Wright J, Small N, Raynor P, *et al.* Cohort profile: the Born in Bradford multi-ethnic  
780 family cohort study. *Int J Epidemiol*. 2012;42(4):978-91.
- 781 38. West J, Santorelli G, Whincup PH, *et al.* Association of maternal exposures with  
782 adiposity at age 4/5 years in white British and Pakistani children: findings from the Born in  
783 Bradford study. *Diabetologia*. 2018;61(1):242-52.
- 784 39. McCarthy S, Das S, Kretzschmar W, *et al.* A reference panel of 64,976 haplotypes  
785 for genotype imputation. *Nat Genet*. 2016;48(10):1279.
- 786 40. The 1000 Genomes Project Consortium. A global reference for human genetic  
787 variation. *Nature*. 2015;526(7571):68.
- 788 41. Huang J, Howie B, McCarthy S, *et al.* Improved imputation of low-frequency and rare  
789 variants using the UK10K haplotype reference panel. *Nature Communications*. 2015;6:8111.
- 790 42. O'Connell J, Gurdasani D, Delaneau O, *et al.* A General Approach for Haplotype  
791 Phasing across the Full Spectrum of Relatedness. *PLOS Genetics*. 2014;10(4):e1004234.
- 792 43. Choi SW, O'Reilly PF. PRSice-2: Polygenic Risk Score software for biobank-scale  
793 data. *GigaScience*. 2019;8(7):giz082.
- 794 44. Vilhjálmsson BJ, Yang J, Finucane HK, *et al.* Modeling linkage disequilibrium  
795 increases accuracy of polygenic risk scores. *The American Journal of Human Genetics*.  
796 2015;97(4):576-92.
- 797 45. Mak TSH, Porsch RM, Choi SW, Zhou X, Sham PC. Polygenic scores via penalized  
798 regression on summary statistics. *Genet Epidemiol*. 2017;41(6):469-80.
- 799 46. Mak TSH, Porsch RM. *lassosum: LASSO with summary statistics and a reference*  
800 *panel. R package version 0.4.4*. 2019.

- 801 47. Loh P-R, Kichaev G, Gazal S, Schoech AP, Price AL. Mixed-model association for  
802 biobank-scale datasets. *Nat Genet.* 2018:1.
- 803 48. Bycroft C, Freeman C, Petkova D, *et al.* Genome-wide genetic data on ~ 500,000 UK  
804 Biobank participants. *BioRxiv.* 2017:166298.
- 805 49. Sudlow C, Gallacher J, Allen N, *et al.* UK biobank: an open access resource for  
806 identifying the causes of a wide range of complex diseases of middle and old age. *PLoS*  
807 *Med.* 2015;12(3):e1001779.
- 808 50. Locke AE, Kahali B, Berndt SI, *et al.* Genetic studies of body mass index yield new  
809 insights for obesity biology. *Nature.* 2015;518(7538):197-206.
- 810 51. Speliotes EK, Willer CJ, Berndt SI, *et al.* Association analyses of 249,796 individuals  
811 reveal 18 new loci associated with body mass index. *Nat Genet.* 2010;42(11):937.
- 812 52. Burgess S, Small DS, Thompson SG. A review of instrumental variable estimators for  
813 Mendelian randomization. *Stat Methods Med Res.* 2017;26(5):2333-55.
- 814 53. Thomas DC, Lawlor DA, Thompson JR. Re: Estimation of bias in nongenetic  
815 observational studies using “Mendelian triangulation” by Bautista *et al.* *Ann Epidemiol.*  
816 2007;7(17):511-3.
- 817 54. Yang J, Zaitlen NA, Goddard ME, Visscher PM, Price AL. Advantages and pitfalls in  
818 the application of mixed-model association methods. *Nat Genet.* 2014;46(2):100.
- 819 55. Yang J, Lee SH, Goddard ME, Visscher PM. GCTA: a tool for genome-wide complex  
820 trait analysis. *Am J Hum Genet.* 2011;88(1):76-82.
- 821 56. Yang Q, Sanderson E, Tilling K, Borges MC, Lawlor DA. Exploring and mitigating  
822 potential bias when genetic instrumental variables are associated with multiple non-exposure  
823 traits in Mendelian randomization. *medRxiv.* 2019:19009605.
- 824 57. Hemani G, Bowden J, Davey Smith G. Evaluating the potential role of pleiotropy in  
825 Mendelian randomization studies. *Hum Mol Genet.* 2018;27(R2):R195-R208.
- 826 58. Bowden J, Davey Smith G, Burgess S. Mendelian randomization with invalid  
827 instruments: effect estimation and bias detection through Egger regression. *Int J Epidemiol.*  
828 2015;44(2):512-25.
- 829 59. StataCorp. *Stata 13 Base Reference Manual.* College Station, TX: Stata Press; 2013.
- 830 60. R Core Team. *R: A language and environment for statistical computing.* Vienna,  
831 Austria: R Foundation for Statistical Computing; 2018.
- 832 61. Bond TA, Karhunen V, Wielscher M, *et al.* Exploring the role of genetic confounding  
833 in the association between maternal and offspring body mass index: evidence from three  
834 birth cohorts. *Int J Epidemiol.* 2019.
- 835 62. Smith J, Cianflone K, Biron S, *et al.* Effects of maternal surgical weight loss in  
836 mothers on intergenerational transmission of obesity. *The Journal of Clinical Endocrinology*  
837 *& Metabolism.* 2009;94(11):4275-83.
- 838 63. Kral JG, Biron S, Simard S, *et al.* Large maternal weight loss from obesity surgery  
839 prevents transmission of obesity to children who were followed for 2 to 18 years. *Pediatrics.*  
840 2006;118(6):e1644-e9.
- 841 64. Willmer M, Berglind D, Sørensen TI, Näslund E, Tynelius P, Rasmussen F. Surgically  
842 induced interpregnancy weight loss and prevalence of overweight and obesity in offspring.  
843 *PLoS One.* 2013;8(12):e82247.
- 844 65. Barisione M, Carlini F, Gradaschi R, Camerini G, Adami GF. Body weight at  
845 developmental age in siblings born to mothers before and after surgically induced weight  
846 loss. *Surg Obes Relat Dis.* 2012;8(4):387-91.
- 847 66. Patel C, Karasouli E, Shuttlewood E, Meyer C. Food Parenting Practices among  
848 Parents with Overweight and Obesity: A Systematic Review. *Nutrients.* 2018;10(12):1966.
- 849 67. Lynch M, Walsh B. *Genetics and analysis of quantitative traits.* Sunderland, MA:  
850 Sinauer; 1998.
- 851 68. Kong A, Thorleifsson G, Frigge ML, *et al.* The nature of nurture: Effects of parental  
852 genotypes. *Science.* 2018;359(6374):424-8.
- 853 69. Brumpton B, Sanderson E, Heilbron K, *et al.* Avoiding dynastic, assortative mating,  
854 and population stratification biases in Mendelian randomization through within-family  
855 analyses. *Nature Communications.* 2020;11(1):3519.

- 856 70. Baud A, Mulligan MK, Casale FP, *et al.* Genetic variation in the social environment  
857 contributes to health and disease. *PLoS Genetics*. 2017;13(1):e1006498.
- 858 71. Schnurr TM, Morgen CS, Borisevich D, *et al.* The influence of transmitted and non-  
859 transmitted parental BMI-associated alleles on the risk of overweight in childhood. *Sci Rep*.  
860 2020;10(1):1-10.
- 861 72. Richardson TG, Harrison S, Hemani G, Smith GD. An atlas of polygenic risk score  
862 associations to highlight putative causal relationships across the human phenome. *Elife*.  
863 2019;8:e43657.
- 864 73. Burgess S, Butterworth AS, Thompson JR. Beyond Mendelian randomization: how to  
865 interpret evidence of shared genetic predictors. *J Clin Epidemiol*. 2016;69:208-16.
- 866 74. Tubbs JD, Zhang YD, Sham PC. Intermediate confounding in trio relationships: The  
867 importance of complete data in effect size estimation. *Genet Epidemiol*. 2020;44(4):395-9.
- 868 75. Sharp GC, Lawlor DA, Richmond RC, *et al.* Maternal pre-pregnancy BMI and  
869 gestational weight gain, offspring DNA methylation and later offspring adiposity: findings  
870 from the Avon Longitudinal Study of Parents and Children. *Int J Epidemiol*. 2015;44(4):1288-  
871 304.
- 872 76. Lawlor DA, Benfield L, Logue J, *et al.* Association between general and central  
873 adiposity in childhood, and change in these, with cardiovascular risk factors in adolescence:  
874 prospective cohort study. *BMJ*. 2010;341:c6224.
- 875 77. Fox C, Massaro J, Hoffmann U, *et al.* Abdominal visceral and subcutaneous adipose  
876 tissue compartments: association with metabolic risk factors in the Framingham Heart Study.  
877 *Circulation*. 2007;116(1):39-48.
- 878 78. Eriksson B, Löf M, Forsum E. Body composition in full-term healthy infants measured  
879 with air displacement plethysmography at 1 and 12 weeks of age. *Acta Paediatr*.  
880 2010;99(4):563-8.
- 881 79. Burgess S, Davies NM, Thompson SG, EPIC-InterAct Consortium. Instrumental  
882 variable analysis with a nonlinear exposure-outcome relationship. *Epidemiology*.  
883 2014;25(6):877-85.
- 884 80. Munafò MR, Tilling K, Taylor AE, Evans DM, Davey Smith G. Collider scope: when  
885 selection bias can substantially influence observed associations. *Int J Epidemiol*. 2017.
- 886