

1 **Retrospective feasibility study of *Mycobacterium tuberculosis* modified**
2 **lipoprotein as a potential biomarker for TB detection in children**

3

4 Xinxin Yang,^{a,b} Matthew F. Wiperman,^{a,c} Sharon Nachman,^d Nicole S. Sampson^{a,#}

5

6 ^aDepartment of Chemistry, Stony Brook University, Stony Brook, NY 11794-3400

7 ^bChronus Pharmaceuticals, Inc., 25 Health Sciences Drive, Stony Brook, NY 11790

8 ^cCurrent address: Clinical and Translational Science Center, Weill Cornell Medicine,
9 New York, NY 10065

10 ^dDepartment of Pediatrics, Renaissance School of Medicine, Stony Brook University,
11 Stony Brook, NY 11794-3400

12

13 Running title: Retrospective Mtb lipoprotein biomarker in children

14

15 #Corresponding author: nicole.sampson@stonybrook.edu

16

17 Abstract

18 **Background:** Current TB diagnostic methods available have been developed for adults
19 and development efforts have neglected the differences in disease and sampling that
20 occur between adults and children. Diagnostic challenges are even greater in HIV co-
21 infected children and infants.

22 **Methods and results:** We established a sandwich ELISA assay to detect

23 *Mycobacterium tuberculosis* modified lipoprotein (TLP) ex vivo in plasma. The study

24 population contains plasma samples from 21 patients with active TB and 24 control
25 samples with no TB, collected in the International Maternal Pediatric Adolescent AIDS
26 Clinical Trials (IMPAACT) P1041 study. Retrospective analysis was performed and the
27 result demonstrate that TLP level is associated with TB disease.

28 **Conclusions:** Plasma levels of TLP associate with active TB disease in HIV positive
29 subjects and can be used as an indicator for TB detection in children.

30

31 **Keywords**

32 Childhood TB, HIV co-infection, diagnosis, sandwich ELISA, lipoprotein, low-density
33 lipoprotein, apoB, biomarker

34 **BACKGROUND**

35 Childhood TB is estimated to contribute 12% of the disease burden, with
36 approximately 10 million cases in 2019 worldwide [1]. Existing gold-standard diagnostic
37 culture tools fail to confirm TB in most children, who typically have low bacterial counts
38 and cannot produce sputum like adults. Diagnostic challenges are great in HIV co-
39 infected children and infants [2], where the clinical presentation of pulmonary TB may
40 be non-specific [3], acute [4, 5], and chest radiographs may be atypical [2]. Although
41 rates of bacteriological confirmation appear similar in HIV-infected and uninfected
42 children [6], diagnostic delay and HIV-related immune pathology contribute to higher
43 rates of TB disease progression with increased disease severity, morbidity, and
44 mortality [7-10]. Infants, young children, and HIV-infected children are at increased risk
45 of developing TB following infection and of disseminated or severe disease, including
46 TB meningitis [11]. Because TB in children is typically paucibacillary, even if a sputum
47 sample or gastric aspirate is obtained, the utility of PCR based diagnostic methods like
48 GeneXpert is limited. More sensitive and child-friendly diagnostic tools are urgently
49 needed to diagnose TB in children [12].

50 *Mycobacterium tuberculosis* (*Mtb*) is an intracellular pathogen that is capable of
51 surviving and replicating within macrophages, the frontline of the innate host defense,
52 and has evolved multiple mechanisms to escape these immune cells [13]. One of the
53 immune evasion strategies of *Mtb* is the deregulation of lipid metabolism, leading to the
54 formation of foamy macrophages (FM), a hallmark of granulomata in tuberculosis
55 lesions [14]. However, only pathogenic mycobacterial strains including *M. tuberculosis*
56 [15], *M. avium*, *M. abscessus*, or *M. bovis* , but not non-pathogenic mycobacterial

57 strains, like *M. smegmatis*, induce foam cell formation upon infection [16, 17]. Foam
58 cells are associated with chronic inflammation in many metabolic diseases and certain
59 cancers besides infectious diseases [18, 19]. For example, foamy macrophages are
60 critical to the initial formation, development, and instability of atherosclerotic plaques
61 and are therefore therapeutic targets in atherosclerosis. Foam cell formation is induced
62 primarily by malondialdehyde-modified low density lipoprotein (MDA-LDL) and not by
63 native or extensively oxidized LDL in atherosclerosis [20]. Elevated plasma levels of
64 MDA-LDL in patients are associated with acute coronary syndromes and are used as
65 diagnostic tools clinically [21].

66 In this study we identified human lipoprotein modification specific to exposure to
67 *Mtb*. The pathogen modified host lipoprotein, TLP, is detectable ex vivo in plasma using
68 a sandwich ELISA assay. We further evaluated the association between the presence of
69 TLP and TB disease status in children.

70

71 **METHODS**

72 ***Preparation of malondialdehyde-conjugated LDL (MDA-LDL) [20] and Mtb-***
73 ***modified lipoprotein (TLP).*** HepG2 human liver cells (ATCC HB-8065) were grown to
74 80% confluence in HepG2 growth media (DMEM, 10% fetal bovine serum, 20 mM L-
75 glutamine, 100 U/mL penicillin, 100 µg/mL streptomycin, and 10 mM HEPES). Cells
76 were grown for 4-5 days and culture supernatants were then harvested and
77 concentrated. LDL particles were separated by density gradient ultracentrifugation and
78 desalted by ultrafiltration through a 100-kDa molecular weight filter. MDA-LDL was
79 prepared by incubation 2 mg protein/mL of LDL with 2 µM acrolein at 37 °C for 24 h

80 under nitrogen atmosphere. *Mycobacterium tuberculosis* was cultured in Middlebrook
81 7H9 (broth) supplemented with 0.2% glycerol, 0.5% BSA, 0.08% NaCl, 0.05% (v/v)
82 tyloxapol to OD~0.7. LDL was added and the culture was incubated at 37 °C for 7 days.
83 TLP was isolated from the culture supernatant, concentrated and washed with PBS.

84 ***Agarose gel electrophoresis and western blot analysis.*** Agarose gel
85 electrophoresis was performed in 0.06 M barbital buffer (pH 8.6). The gel was 0.8% and
86 stained with Sudan Red 7B. Lipoproteins were separated on a 6% sodium dodecyl
87 sulfate polyacrylamide gel electrophoresis (SDS-PAGE), proteins were transferred to a
88 PVDF membrane and immunoblotted with specific antibodies. The primary antibodies
89 used for western blot were monoclonal anti-LDL (MDA oxidized) antibody (Abcam) and
90 polyclonal anti-apoB Ab (H-300, Santa Cruz). Membranes were treated with anti-mouse,
91 or anti-rabbit IgG HRP conjugates as secondary antibodies.

92 ***THP-1 macrophage preparation and treatment.*** THP-1 cells (ATCC TIB-202)
93 were maintained in RPMI-1640 medium containing heat-inactivated 10% fetal bovine
94 serum (FBS), 0.05 mM 2-mercaptoethanol, 100 U/mL penicillin and 100 mg/mL
95 streptomycin (RPMI complete medium). The cells were plated into 6-well plates
96 containing coverslips (1.5×10^6 /well), treated with phorbol 12-myristate 13-acetate
97 (PMA, 150 nM) in RPMI complete media. Media was replaced with fresh RPMI
98 complete media at 48 hours after plating. At 72 hours after media change, THP-1
99 macrophages were treated with LDL, MDA-LDL and TLP at 200 µg/mL in PBS for 24
100 hours. All cells were incubated in a humid atmosphere at 37°C with 95% air and 5%
101 CO₂.

102 **Lipid body staining and immunostaining.** Following lipoprotein treatment,
103 macrophages were washed with PBS and fixed with 4% paraformaldehyde at room
104 temperature for 30 minutes. Cells were stained with Oil Red O solution for 20 minutes at
105 room temperature. The slides were then counterstained with haematoxylin and
106 observed under an inverted microscope (Zeiss Axiovert 200M). Percent foam cell
107 formation was quantified by counting stained versus total cells in 10 fields.

108 **Generation of anti-TLP antibodies** [22, 23]. Monoclonal antibodies against
109 TLP were identified utilizing Human Combinatorial Antibody Library (HuCAL, Bio-Rad
110 AbD Serotec GmbH). The HuCAL phage display library was depleted of antibodies that
111 recognize intact LDL. The depleted library was panned for three rounds of binding,
112 elution, and amplification to isolate antibodies specific for TLP. Binding of anti-TLP
113 antibodies to control antigens including BSA, HSA, N1-CD33-His6 and intact LDL, was
114 checked by indirect ELISA assays, with anti-TLP antibodies as primary antibodies and
115 an anti-Fab-AP conjugate (Bio-Rad) as a secondary antibody.

116 **Sandwich ELISA assay.** Briefly, 96 well plates were coated overnight at 4°C
117 with 5 µg/mL capture antibody (AbD28580, amino acid sequence shown in Table S2) in
118 phosphate buffered saline (PBS). Plates were washed with PBS containing 0.05%
119 Tween-20 (PBST) 3 times, blocked with 3% BSA in PBST for 1 hour at room
120 temperature. Then serial dilutions of standards and test samples in HISPEC assay
121 diluent (Bio-Rad) were loaded and allowed to react for 2 hours at room temperature.
122 Plates were then washed 3 times with PBST and treated with 2 µg/mL of HRP
123 conjugated detection antibody (AbD28582) in HISPEC assay diluent for 1 hour at room
124 temperature. After washing 6 times with PBST, the plates were developed with

125 QuantaBlu fluorogenic peroxidase substrate kit (Thermo Scientific) for 30 min at room
126 temperature. Fluorescence was recorded (ex. $320 \pm 25\text{nm}$, em. $430 \pm 35\text{nm}$).

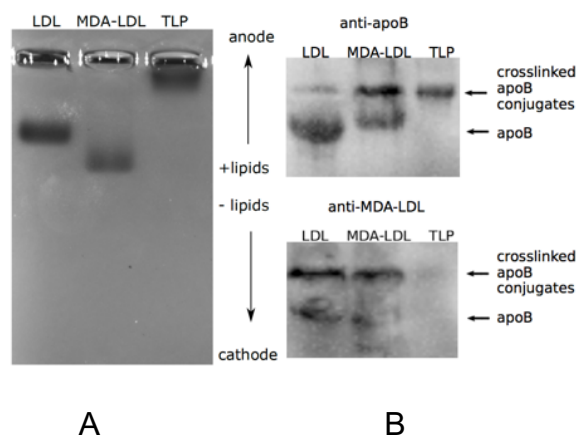
127 **Subjects and samples.** Retrospective analysis was performed on a total of 45
128 plasma samples from International Maternal Pediatric Adolescent AIDS Clinical Trails
129 (IMPAACT) P1041 [24, 25]. P1041 was a Phase II/ III, randomized, double-blind,
130 placebo-controlled clinical trial to evaluate the efficacy of isoniazid prophylaxis on TB
131 disease and latent *Mtb* infection free survival in HIV-infected and HIV-exposed, but
132 uninfected infants up to 192 weeks of follow up [25, 26]. Samples include 24 with noTB
133 and 21 with TBDIS, all HIV infected. Patients without *Mtb* infection were categorized as
134 noTB; patients with a positive tuberculin skin test but lacking any clinical, radiographic
135 or laboratory evidence of disease caused by *Mtb* were categorized as latent TB
136 infection (LTBI); and patients presenting clinical, radiographic or laboratory evidence of
137 disease caused by *Mtb* were categorized as TBDIS. Plasma samples were collected,
138 frozen and thawed before use.

139 **Statistical Analysis.** Categorical variables were compared using t-student test,
140 whenever appropriate. Non-parametric tests (Mann-Whitney) were used for non-
141 normally distributed variables. Assay accuracy, including 95% confidence intervals, was
142 assessed using sensitivity, specificity, predictive values and area under the ROC in the
143 TB and non-TB groups. Statistical calculations were performed with GraphPad
144 Prism® Software.

145

146 **RESULTS**

147 ***Mtb* modified lipoprotein (TLP) is different from MDA-LDL.** We purified and
 148 treated native LDL with *Mycobacterium tuberculosis* in vitro to obtain *Mtb* modified
 149 lipoprotein (TLP). Decreased mobility of TLP in agarose electrophoresis indicates that
 150 TLP is more positively charged than native LDL (Figure 1A). In contrast, MDA-LDL, one
 151 of the end products of lipid peroxidation, is more negatively charged than native LDL
 152 [20]. The increased size of TLP compared to native LDL was also confirmed by dynamic
 153 light scattering analysis (Table S1). Furthermore, TLP is recognized by anti-
 154 apolipoprotein B (apoB) antibodies but not anti-MDA-LDL antibodies, indicating TLP
 155 does not contain a malondialdehyde-modified apoB derivative (Figure 1B). We
 156 demonstrate that LDL is altered in the presence of *Mtb*, and the resulting TLP is distinct
 157 from the typical atherosclerotic species malondialdehyde-modified LDL (MDA-LDL)
 158 present in human blood [27].
 159



160
 161 **A** **B**

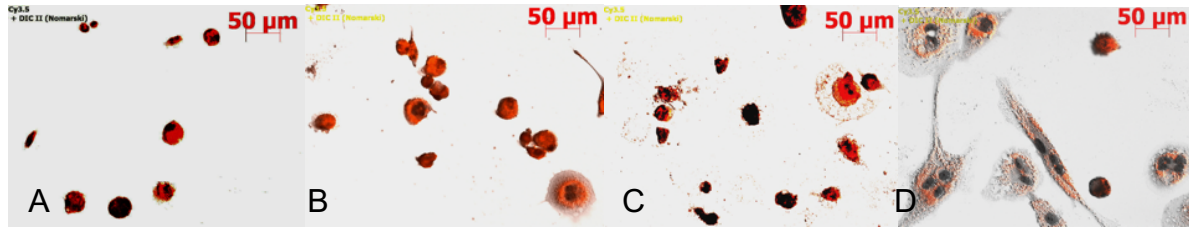
162 **Figure 1. TLP is different from MDA-LDL.** (A) an agarose gel electrophoresis showing
 163 TLP is larger in size and more positively charged than native LDL. (B) Immunoblots
 164 showing TLP is recognized by anti- apolipoprotein B (apoB) antibodies (top) but not
 165 anti- MDA-LDL antibodies (bottom). Images of the entire gel and blots are in Figure S1.

166

167 ***Mtb modified LDL induces lipid body accumulation in macrophages.*** The
168 induction of foamy macrophages have been reported as hallmarks in many pathologies
169 associated with chronic proinflammatory stimuli including atherosclerosis [15]. It has
170 also been reported that *Mtb* lipids induce the formation of giant multinuclear
171 macrophages [28]. We therefore used foamy macrophage formation as a tool to assess
172 the bioactive components that trigger a tissue response similar to granuloma formation
173 in TB. Lipid bodies were stained with Oil red O. The buffer control showed no
174 accumulation of lipid bodies and the cells remained rounded (Figure 2A). LDL treated
175 macrophage showed some lipid accumulation, with a commensurate increase in cell
176 size (Figure 2B). In contrast, MDA-LDL, commonly associated with atherosclerosis,
177 treated macrophages exhibited more extensive accumulation of lipid bodies than the
178 LDL treated macrophages. These macrophage phenotypes are consistent with previous
179 reports of in vitro foamy macrophage formation [20, 29]. Most importantly, TLP treated
180 macrophages had extensive lipid body accumulation per cell compared to macrophages
181 treated with other LDLs (Figure 2 and S2B). Moreover, the TLP-treated macrophage
182 morphology was distinct from other samples. The majority of the TLP-treated
183 macrophages became multinucleated (Figure 2D and S2A) and developed long
184 filopodia consistent with cell migration or exocytosis. Thus, we hypothesize that the
185 modified LDL is detectable in vivo to serve as a biomarker for TB disease, and an
186 antibody specific for recognition of TLP is an *Mtb*-specific indicator of infection and
187 progression to (active) TB disease.

188

189



190

191

192 **Figure 2. TLP induces lipid body accumulation in macrophages.** Microscopic
193 images of Oil Red O-hematoxylin stained THP-1 macrophage culture treated with PBS
194 control (A), LDL (B), MDA-LDL (C) and TLP (D) at 200 µg/mL for 2 days.

195

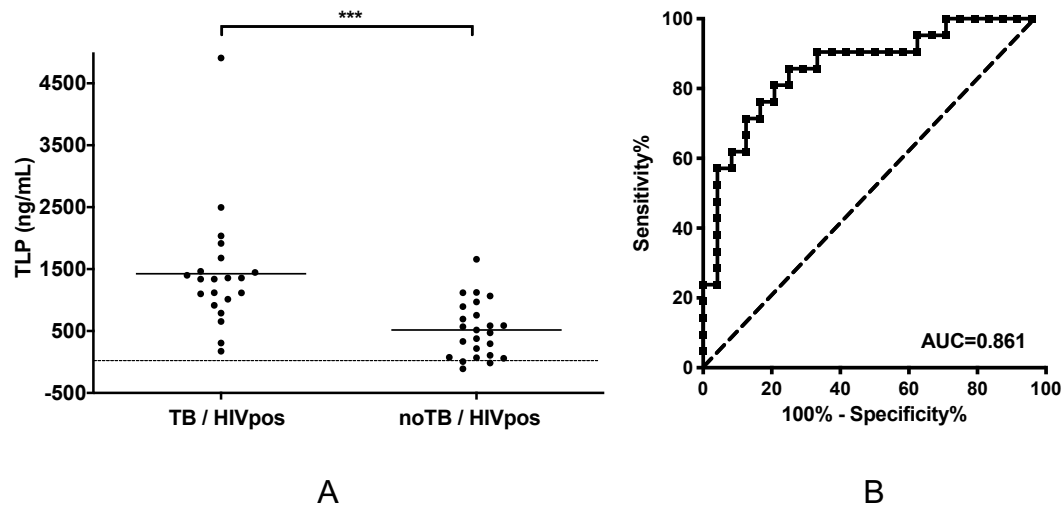
196 ***Anti-TLP monoclonal antibodies were generated and a TLP Sandwich ELISA***

197 ***assay was established.*** We generated 13 anti-TLP monoclonal antibodies (Fad-A-FH,
198 bivalent Fab-bacterial alkaline phosphatase fusion antibody followed by FLAG[®] and His6-
199 tag) from the Human Combinatorial Antibody Library (HuCAL, Bio-Rad AbD Serotec
200 GmbH) using in vitro selection and counter selection [22, 23]. HuCAL is a phage display
201 library containing highly specific, fully human monoclonal antibodies, with DNA sequence
202 encoded for each antibody fragment. The HuCAL phage display library was depleted of
203 antibodies that recognize LDL (Figure S3). The depleted library was panned for three
204 rounds of binding, elution, and amplification to isolate antibodies specific for TLP. Among
205 the antibody hits selected, 13 antibodies were identified as unique by DNA sequencing.
206 These antibodies were produced heterologously for further development. The cross-
207 reactivity with native LDL, human serum albumin, bovine serum albumin, and His₆ affinity
208 tag was determined in an indirect ELISA format. Eight antibodies showed a specific signal
209 for TLP at least 4-fold above native LDL background (Figure S3). We tested pairwise

210 combinations of antibodies to identify antibody pairs that have non-overlapping epitopes
211 suitable for use in a sandwich ELISA (Figure S4A). 5 sandwich pairs were identified with
212 good signal over background and the assay conditions were optimized for the best pair,
213 AbD28582 and AbD28580 (amino acid sequence shown in Table S2). We established
214 the linear response of the sandwich ELISA (Figure S4B) to antigen spiked into pediatric
215 plasma. TLP is specifically detected at ≥ 4 ppm in the presence of plasma LDL, which is
216 around 10^6 ng/mL [30].

217 ***Levels of TLP are increased in patients with active TB compared to no TB***
218 ***controls.*** We assayed stored plasma samples from the HIV IMPAACT P1041 trial for
219 the presence of TLP. The median plasma levels of TLP was 494 ng/mL in control
220 subjects, and 2.7 fold higher in active TB subjects (Figure 3A). The difference between
221 control subjects and active TB subjects is significant ($p < 0.001$). The receiver operating
222 characteristic (ROC) analysis describes the relationship between the sensitivity and
223 specificity at any cut-off values. An ROC curve of TLP concentration for active TB
224 versus control subjects is presented in Figure 3B. The area under the ROC curve (AUC)
225 is 0.86 (95% CI=0.75-0.97, $p < 0.0001$). An optimal cutoff of 1064 ng/mL rendered 71%
226 sensitivity and 88% specificity. Alternatively, a cutoff of 1230 ng/mL provided 57%
227 sensitivity and of 96% specificity.

228



229

230

231 **Figure 3. Retrospective analysis of P1041 HIV positive plasma samples. (A)**

232 Plasma levels of TLP in HIV positive subjects clinically diagnosed probably having

233 active stage tuberculosis disease (TB) and not having TB (noTB). Individual patients are

234 depicted as dots with group mean. The dashed line represents the detection limit of the

235 assay. *** $p < 0.001$. (B) ROC curve of TLP concentration for active TB versus control

236 subjects of HIV positive patients. AUC, area under curve. The dashed line represents

237 the no-discrimination line from the left bottom to the top right corners.

238

239 We also monitored apoB levels, i.e., LDL levels, of all the samples using Human

240 apoB ELISA kits (ab190806, Abcam) and found there was no linear correlation between

241 TLP and apoB levels (Figure S6A), suggesting that plasma LDL fluctuation does not

242 interfere with TLP detection. There is a weak correlation between TLP levels and time

243 before or after diagnosis (Figure S6B). The samples collected before diagnosis may

244 represent disease progression from no infection or infection but without clinical signs of

245 disease to outward manifestation of disease. Samples collected after diagnosis may

246 represent a mixed outcome of disease progression and anti-tubercular treatment. We

247 do not have additional sample sets to demonstrate if anti-tubercular treatment affects
248 TLP levels. However, the discrimination of TLP levels between control subjects and
249 active TB subjects (post diagnosis with treatment less than 40 weeks) was improved
250 with the exclusion of samples collected after 40 weeks of treatment ($p < 0.0001$), which
251 may represent patients clear of TB (Figure S6). ROC (Receiver operating characteristic)
252 analysis provided an AUC (area under the ROC curve) of 0.88 (95% CI=0.76-0.99,
253 $p < 0.0001$). An optimal cutoff of 632 ng/mL gave 67% sensitivity and 93% specificity.
254 The results provide further evidence that TLP levels are associated with active TB
255 disease. Overall, the results clearly highlight the potential of TLP as a biomarker in the
256 diagnosis of active TB in HIV positive children.

257

258 **DISCUSSION AND CONCLUSIONS**

259 The wide spectrum of disease observed in children, and the non-specific signs and
260 symptoms especially in young and HIV+ children, contribute to diagnostic delay and
261 missed opportunities to detect TB, which in turn, favors TB disease progression and poor
262 treatment outcomes. There is urgent need to search for a “Rapid Non-sputum-based
263 Biomarker Test for Tuberculosis Detection” [12]. Most of the biomarkers currently studied
264 are host-derived biomarkers including metabolites and cytokines,^[31, 32] the levels of which
265 can be affected by many confounding factors. On the other hand, *Mtb* products can be
266 detected directly in blood, sputum or urine, and are increasingly being used for
267 diagnosis.^[33] We have characterized a unique biomolecule, *Mtb* modified lipoprotein,
268 which results from a combination of host and *Mtb* pathogen activity. Functionally, TLP
269 increases the flux of lipid into activated macrophages, thereby stimulating their conversion

270 into foamy multi-nucleated macrophages. The TLP-stimulated macrophages accumulate
271 lipid bodies but have a distinct phenotype from MDA-LDL-stimulated macrophages
272 (Figure 2). We reason that detection of this biomolecule in patient plasma may withstand
273 the heterogeneity associated with variations derived from host and be pathogen or
274 disease specific. Thus, TLP detection may be used as TB diagnosis in young children.

275 The lipoprotein modification can take place in macrophages in contact with *M.*
276 *tuberculosis*. There are also reports demonstrating that extracellular vesicles carrying
277 bacterial components are released from infected macrophages and circulated beyond
278 the site of infection [34], where host lipoproteins could be modified via contact with the
279 extracellular vesicles. In addition, the intracellular bacilli are able to avoid killing by
280 escaping phagosome-lysosome fusion. In certain individuals, especially children below
281 5 years of age and immunosuppressed subjects, the extracellular bacilli may disperse to
282 distant metastatic sites via lymphatics and the bloodstream [35], where host lipoproteins
283 may be modified by direct contact with *M. tuberculosis*. Our data demonstrate that the
284 modified lipoprotein in the present study is distinct from other commonly recognized
285 disease associated LDLs, which are typically negatively charged and smaller in particle
286 size compared to native LDL [36].

287 The present study established a rapid, non-invasive, and robust sandwich ELISA
288 assay for the detection of a novel biomolecule TLP in plasma. We demonstrate that
289 plasma levels of TLP are significantly distinguishable in HIV positive subjects with active
290 TB disease compared to no TB controls (Figure 3). The significant elevation of plasma
291 levels of TLP in HIV positive subjects with active TB disease suggests the detection of
292 TLP associate with TB active disease in HIV positive subjects. The AUC value of 0.86

293 evidenced the diagnostic value of TLP for TB detection in child. The target product profiles
294 (TPP) adopted by the World Health Organization (WHO) in 2015 for a “Rapid Non-
295 sputum-based Biomarker Test for Tuberculosis Detection” is a diagnostic sensitivity $\geq 66\%$
296 for microbiologically confirmed pediatric TB and 98% specificity for a pediatric test [12].
297 The TPP proposed sensitivity is similar to the sensitivity of the Xpert MTB/RIF assay in
298 microbiologically confirmed samples. Our assay renders 57% sensitivity and 96%
299 specificity, which has the potential to meet the WHO TPP for detection of active TB in
300 children, given the highly heterogenous population of P1041 samples, with respect to the
301 bacteriological and clinical status.

302 Samples used in our study were obtained from IMPAACT P1041 clinical trial. The
303 accuracy of TB diagnosis for the P1041 trial samples is not known due to the absence of
304 good pediatric TB diagnostics. In addition, microbiological confirmation of TB disease was
305 not obtained for any of these patients in the P1041 trial. TB disease subjects used in the
306 present study are patients infected with TB presenting clinical symptoms of disease. The
307 ELISA assays were performed retrospectively and the variance in storage conditions
308 might affect the antigen integrity and therefore the accuracy of the assay. We have
309 insufficient samples to include other clinical characteristics of the patients into data
310 analysis. The clinical characteristics include but not limited to BCG administration,
311 immunosuppression status like CD4 counts, or clinical manifestation of tuberculosis
312 (pulmonary and extra-pulmonary TB). The consideration of those characteristics may help
313 define the limitation of our TLP assay or render improved accuracy with the combination
314 of other clinical factors.

315 We focused on HIV positive subjects in the current study. TB diagnosis is particularly
316 difficult among HIV co-infected individuals who may have atypical, nonspecific clinical
317 presentation, high rates of smear negative disease and high rates of extrapulmonary TB
318 [37]. P1041 samples were obtained from TB endemic settings, therefore patients were
319 typically being diagnosed at more advanced stages than those living in the US. Therefore,
320 the heterogenous stages of TB disease may contribute to the wide dispersity of TLP levels
321 in TB disease subjects (Figure 3A), which is common among TB diagnostic assays. In
322 addition, the duration of anti-tubercular treatment was not consistent among patients in
323 the present study. Change of LDL modification is a dynamic process and may have the
324 potential to monitor treatment outcome. Although not statistically significant, the slight
325 decrease in the TLP level post diagnosis/ anti-tubercular treatment of 40 weeks may be
326 related to a reduction in microbial load (Figures S6A and S6B). Further studies are
327 required to elucidate the effect of different disease status and/or treatment status on TLP
328 levels in plasma, and to extend our preliminary results to other populations such as HIV
329 negative subjects and adults.

330 It is a growing notion in the field that a single biomarker will not be sufficient for
331 distinguishing TB status in different patient groups, and multiple biomarkers may be
332 used to increase sensitivity and specificity. Further gains in clinical sensitivity and
333 specificity may be obtained by combining the current assay with other biomarkers or
334 diagnostic tests.

335

336 **LIST OF ABBREVIATIONS**

337 TB, tuberculosis; *Mtb*, *Mycobacterium tuberculosis*; ELISA, enzyme-linked
338 immunosorbent assay; FM, foamy macrophages; MDA-LDL, malondialdehyde-modified
339 low density lipoprotein; TLP, *Mycobacterium tuberculosis* modified lipoprotein; ROC,
340 receiver operating characteristic; AUC, area under the ROC curve.

341

342 **DECLARATIONS**

343 ***Ethics approval and consent to participate***

344 The NIH-IMPAACT Scientific Leadership Group (SLG) reviewed and approved the
345 use of P1041 trial samples under NWCS127. The Wits Health Consortium,
346 University of Witwatersrand, South Africa provided deidentified samples to Stony
347 Brook University for which informed consent had been obtained from a parent
348 and/or legal guardian. The Stony Brook University CORIHS determined the
349 experiments in this manuscript were not human subjects research under either
350 the Common Rule or FDA Regulations.

351 ***Consent for publication***

352 All authors have approved the manuscript for submission.

353 ***Availability of data and materials***

354 The datasets used and/or analysed during the current study are available from
355 the corresponding author on reasonable request.

356 ***Competing interests***

357 NSS is President and co-owner of Chronus Pharmaceuticals, Inc. XY was an
358 employee of both Chronus Pharmaceuticals, Inc and Stony Brook University. All
359 intellectual property is currently owned by Stony Brook University. SN and MFM
360 have no conflict of interest.

361 ***Funding***

362 Research reported in this publication was supported by the National Heart, Lung,
363 and Blood Institute of the National Institutes of Health under Award Number
364 U01HL127522, and National Institute of Allergy and Infectious Diseases (NIAID)
365 under award number R41AI136071 to Chronus Pharmaceuticals, Inc with a
366 subcontract to Stony Brook University (NSS) and the National Center for
367 Advancing Translational Sciences under award number TL1TR002386 (MFW).

368 Overall support for the International Maternal Pediatric Adolescent AIDS Clinical
369 Trials (IMPAACT) Network was provided by the National Institute of Allergy and
370 Infectious Diseases (NIAID) of the National Institutes of Health (NIH) under Award
371 Numbers UM1AI068632 (IMPAACT LOC), UM1AI068616 (IMPAACT SDMC) and
372 UM1AI106716 (IMPAACT LC), with co-funding from the Eunice Kennedy Shriver
373 National Institute of Child Health and Human Development (NICHD) and the
374 National Institute of Mental Health (NIMH). The content is solely the
375 responsibility of the authors and does not necessarily represent the official views
376 of the NIH.

377 **Authors' contributions**

378 SN, MFW, XY, NSS conceived the experiments

379 SN, MFW, obtained sample resource

380 XY performed the experiments

381 XY, NSS wrote the main manuscript text

382 XY prepared all figures

383 All authors reviewed the manuscript

384 **Acknowledgements**

385 We thank Guannan Chen for help with initial LDL purification experiments.

386

387 **REFERENCES**

388 1. WHO. 2020. Global tuberculosis report

389 <https://apps.who.int/iris/bitstream/handle/10665/336069/9789240013131-eng.pdf>

390 Accessed 16 March 2021.

391 2. Cotton MF, Schaaf HS, Hesselning AC, Madhi SA: **HIV and childhood tuberculosis: the way**

392 **forward.** *The international journal of tuberculosis and lung disease : the official journal of the*

393 *International Union against Tuberculosis and Lung Disease* 2004, **8**(5):675-682.

394 3. Marais BJ, Gie RP, Obihara CC, Hesselning AC, Schaaf HS, Beyers N: **Well defined symptoms**

395 **are of value in the diagnosis of childhood pulmonary tuberculosis.** *Archives of disease in*

396 *childhood* 2005, **90**(11):1162-1165.

397 4. Moore DP, Klugman KP, Madhi SA: **Role of Streptococcus pneumoniae in hospitalization**

398 **for acute community-acquired pneumonia associated with culture-confirmed**

- 399 ***Mycobacterium tuberculosis* in children: a pneumococcal conjugate vaccine probe**
400 **study.** *The Pediatric infectious disease journal* 2010, **29**(12):1099-1004.
- 401 5. Zar HJ, Tannenbaum E, Apolles P, Roux P, Hanslo D, Hussey G: **Sputum induction for the**
402 **diagnosis of pulmonary tuberculosis in infants and young children in an urban setting**
403 **in South Africa.** *Archives of disease in childhood* 2000, **82**(4):305-308.
- 404 6. Walters E, Cotton MF, Rabie H, Schaaf HS, Walters LO, Marais BJ: **Clinical presentation and**
405 **outcome of tuberculosis in human immunodeficiency virus infected children on anti-**
406 **retroviral therapy.** *BMC pediatrics* 2008, **8**:1.
- 407 7. Jeena PM, Mitha T, Bamber S, Wesley A, Coutsooudis A, Coovadia HM: **Effects of the human**
408 **immunodeficiency virus on tuberculosis in children.** *Tubercle and lung disease : the*
409 *official journal of the International Union against Tuberculosis and Lung Disease* 1996,
410 **77**(5):437-443.
- 411 8. Schaaf HS, Gie RP, Beyers N, Smuts N, Donald PR: **Tuberculosis in infants less than 3**
412 **months of age.** *Archives of disease in childhood* 1993, **69**(3):371-374.
- 413 9. Jeena PM, Pillay P, Pillay T, Coovadia HM: **Impact of HIV-1 co-infection on presentation**
414 **and hospital-related mortality in children with culture proven pulmonary**
415 **tuberculosis in Durban, South Africa.** *The international journal of tuberculosis and lung*
416 *disease : the official journal of the International Union against Tuberculosis and Lung Disease*
417 2002, **6**(8):672-678.
- 418 10. Madhi SA, Huebner RE, Doedens L, Aduc T, Wesley D, Cooper PA: **HIV-1 co-infection in**
419 **children hospitalised with tuberculosis in South Africa.** *The international journal of*
420 *tuberculosis and lung disease : the official journal of the International Union against*
421 *Tuberculosis and Lung Disease* 2000, **4**(5):448-454.
- 422 11. Marais BJ, Gie RP, Schaaf HS, Hesselning AC, Obihara CC, Starke JJ, Enarson DA, Donald PR,
423 Beyers N: **The natural history of childhood intra-thoracic tuberculosis: a critical review**

- 424 **of literature from the pre-chemotherapy era.** *The international journal of tuberculosis and*
425 *lung disease : the official journal of the International Union against Tuberculosis and Lung*
426 *Disease* 2004, **8**(4):392-402.
- 427 12. Denkinger CM, Kik SV, Cirillo DM, Casenghi M, Shinnick T, Weyer K, Gilpin C, Boehme CC,
428 Schito M, Kimerling M *et al*: **Defining the needs for next generation assays for**
429 **tuberculosis.** *J Infect Dis* 2015, **211 Suppl 2**:S29-38.
- 430 13. Abdalla AE, Ejaz H, Mahjoob MO, Alameen AAM, Abosalif KOA, Elamir MYM, Mousa MA:
431 **Intelligent Mechanisms of Macrophage Apoptosis Subversion by Mycobacterium.**
432 *Pathogens* 2020, **9**(3).
- 433 14. Genoula M, Marin Franco JL, Dupont M, Kviatcovsky D, Milillo A, Schierloh P, Morana EJ, Poggi
434 S, Palmero D, Mata-Espinosa D *et al*: **Formation of Foamy Macrophages by Tuberculous**
435 **Pleural Effusions Is Triggered by the Interleukin-10/Signal Transducer and Activator**
436 **of Transcription 3 Axis through ACAT Upregulation.** *Front Immunol* 2018, **9**:459.
- 437 15. Russell DG, Cardona PJ, Kim MJ, Allain S, Altare F: **Foamy macrophages and the progression**
438 **of the human tuberculosis granuloma.** *Nat Immunol* 2009, **10**(9):943-948.
- 439 16. Viljoen A, Blaise M, de Chastellier C, Kremer L: **MAB_3551c encodes the primary**
440 **triacylglycerol synthase involved in lipid accumulation in Mycobacterium abscessus.**
441 *Mol Microbiol* 2016, **102**(4):611-627.
- 442 17. Caire-Brandli I, Papadopoulos A, Malaga W, Marais D, Canaan S, Thilo L, de Chastellier C:
443 **Reversible lipid accumulation and associated division arrest of Mycobacterium avium**
444 **in lipoprotein-induced foamy macrophages may resemble key events during latency**
445 **and reactivation of tuberculosis.** *Infect Immun* 2014, **82**(2):476-490.
- 446 18. Guerrini V, Gennaro ML: **Foam Cells: One Size Doesn't Fit All.** *Trends Immunol* 2019,
447 **40**(12):1163-1179.

- 448 19. Agarwal P, Combes TW, Shojaee-Moradie F, Fielding B, Gordon S, Mizrahi V, Martinez FO:
449 **Foam Cells Control Mycobacterium tuberculosis Infection.** *Front Microbiol* 2020, **11**:1394.
- 450 20. Watanabe K, Nakazato Y, Saiki R, Igarashi K, Kitada M, Ishii I: **Acrolein-conjugated low-**
451 **density lipoprotein induces macrophage foam cell formation.** *Atherosclerosis* 2013,
452 **227(1):51-57.**
- 453 21. Holvoet P, Vanhaecke J, Janssens S, Van de Werf F, Collen D: **Oxidized LDL and**
454 **malondialdehyde-modified LDL in patients with acute coronary syndromes and stable**
455 **coronary artery disease.** *Circulation* 1998, **98(15):1487-1494.**
- 456 22. Knappik A, Ge L, Honegger A, Pack P, Fischer M, Wellnhofer G, Hoess A, Wolle J, Pluckthun A,
457 Virnekas B: **Fully synthetic human combinatorial antibody libraries (HuCAL) based on**
458 **modular consensus frameworks and CDRs randomized with trinucleotides.** *J Mol Biol*
459 2000, **296(1):57-86.**
- 460 23. Prassler J, Thiel S, Pracht C, Polzer A, Peters S, Bauer M, Norenberg S, Stark Y, Kolln J, Popp A
461 *et al*: **HuCAL PLATINUM, a synthetic Fab library optimized for sequence diversity and**
462 **superior performance in mammalian expression systems.** *J Mol Biol* 2011, **413(1):261-**
463 **278.**
- 464 24. Madhi SA, Nachman S, Violari A, Kim S, Cotton MF, Bobat R, Jean-Philippe P, McSherry G,
465 Mitchell C, Team PS: **Primary isoniazid prophylaxis against tuberculosis in HIV-exposed**
466 **children.** *The New England journal of medicine* 2011, **365(1):21-31.**
- 467 25. **A randomized, double blind, placebo controlled trial to determine the efficacy of**
468 **isoniazid (INH) in preventing tuberculosis disease and latent tuberculosis infection**
469 **among infants with perinatal exposure to HIV.**
470 [https://impaactnetwork.org/DocFiles/P1041/P1041V2_11Jul07.pdf]
- 471 26. Gupta A, Montepiedra G, Gupte A, Zeldow B, Jubulis J, Detrick B, Violari A, Madhi S, Bobat R,
472 Cotton M *et al*: **Low Vitamin-D Levels Combined with PKP3-SIGIRR-TMEM16J Host**

- 473 **Variants Is Associated with Tuberculosis and Death in HIV-Infected and -Exposed**
474 **Infants.** *PloS one* 2016, **11**(2):e0148649.
- 475 27. Yoshida M, Higashi K, Kobayashi E, Saeki N, Wakui K, Kusaka T, Takizawa H, Kashiwado K,
476 Suzuki N, Fukuda K *et al*: **Correlation between images of silent brain infarction, carotid**
477 **atherosclerosis and white matter hyperintensity, and plasma levels of acrolein, IL-6**
478 **and CRP.** *Atherosclerosis* 2010, **211**(2):475-479.
- 479 28. Puissegur MP, Lay G, Gilleron M, Botella L, Nigou J, Marrakchi H, Mari B, Duteyrat JL, Guerardel
480 Y, Kremer L *et al*: **Mycobacterial lipomannan induces granuloma macrophage fusion via**
481 **a TLR2-dependent, ADAM9- and beta1 integrin-mediated pathway.** *J Immunol* 2007,
482 **178**(5):3161-3169.
- 483 29. Nezami N, Ghorbanihaghjo A, Rashtchizadeh N, Argani H, Tafrishinejad A, Ghorashi S,
484 Hajhosseini B: **Atherogenic changes of low-density lipoprotein susceptibility to**
485 **oxidation, and antioxidant enzymes in pulmonary tuberculosis.** *Atherosclerosis* 2011,
486 **217**(1):268-273.
- 487 30. Sacks FM, Moye LA, Davis BR, Cole TG, Rouleau JL, Nash DT, Pfeffer MA, Braunwald E:
488 **Relationship between plasma LDL concentrations during treatment with pravastatin**
489 **and recurrent coronary events in the cholesterol and recurrent events trial.** *Circulation*
490 1998, **97**(15):1446-1452.
- 491 31. Weiner J, Kaufmann SH: **Recent advances towards tuberculosis control: vaccines and**
492 **biomarkers.** *Journal of internal medicine* 2014.
- 493 32. Walzl G, Ronacher K, Hanekom W, Scriba TJ, Zumla A: **Immunological biomarkers of**
494 **tuberculosis.** *Nature reviews Immunology* 2011, **11**(5):343-354.
- 495 33. Goletti D, Lee MR, Wang JY, Walter N, Ottenhoff THM: **Update on tuberculosis biomarkers:**
496 **from correlates of risk, to correlates of active disease and of cure from disease.**
497 *Respirology* 2018, **23**(5):455-466.

- 498 34. Athman JJ, Wang Y, McDonald DJ, Boom WH, Harding CV, Wearsch PA: **Bacterial membrane**
499 **vesicles mediate the release of Mycobacterium tuberculosis lipoglycans and**
500 **lipoproteins from infected macrophages.** *J Immunol* 2015, **195**(3):1044-1053.
- 501 35. Grosset J: **Mycobacterium tuberculosis in the extracellular compartment: an**
502 **underestimated adversary.** *Antimicrob Agents Chemother* 2003, **47**(3):833-836.
- 503 36. Orekhov AN: **LDL and foam cell formation as the basis of atherogenesis.** *Curr Opin Lipidol*
504 2018, **29**(4):279-284.
- 505 37. Scott L, da Silva P, Boehme CC, Stevens W, Gilpin CM: **Diagnosis of opportunistic infections:**
506 **HIV co-infections - tuberculosis.** *Curr Opin HIV AIDS* 2017, **12**(2):129-138.
- 507