

1     **Implementation of the 2021 molecular ESGO/ESTRO/ESP risk**  
2                                    **groups in endometrial cancer**

3 .  
4 Sara Imboden<sup>2</sup>, Denis Nastic<sup>1</sup>, Mehran Ghaderi<sup>1</sup>, Filippa Rydberg<sup>1</sup>, Franziska Siegenthaler<sup>2</sup>,  
5 Michael D Mueller<sup>2</sup>, Tilman T Rau<sup>3</sup>, Elisabeth Epstein<sup>4</sup>, Joseph W. Carlson<sup>1\*</sup>

6  
7 <sup>1</sup> Department of Oncology-Pathology, Karolinska Institutet, and Department of Pathology and  
8 Cytology, Karolinska University Hospital, Stockholm, Sweden

9 <sup>2</sup> Department of Obstetrics and Gynecology, Bern University Hospital and University of  
10 Bern, Bern, Switzerland

11 <sup>3</sup> Institute of Pathology, University of Bern, Bern, Switzerland

12 <sup>4</sup> Department of Clinical Science and Education, Karolinska Institutet, and Department of  
13 Obstetrics and Gynecology, Södersjukhuset, Stockholm, Sweden

14  
15 \* Corresponding author

16 Joseph W. Carlson

17 Radiumhemmet P1:02

18 Dept of Pathology and Cytology

19 Karolinska University Hospital – Solna campus

20 17176, Stockholm. SWEDEN

21 Tel: +46 (0)76 1130912

22 FAX: +46 (0)8 517 745 24

23 Email: [joseph.carlson@ki.se](mailto:joseph.carlson@ki.se) (JC)

24 Twitter handle: @joseph\_carlson

25

26 **Funding information and Acknowledgments**

27 The funders had no role in study design, data collection and analysis, decision to publish, or  
28 preparation of the manuscript. Funding sources are: Bernese Cancer League  
29 (<https://bern.krebsliga.ch/>), Swiss National Science Foundation  
30 (IZSE70\_177073)<http://www.snf.ch/>; Avtal om Läkarutbildning och Forskning (ALF), ALF-  
31 Stockholm County (grant no 550411)<https://ki.se>, Cancer research funding from  
32 'Radiumhemmet' Stockholm, Sweden (grant no 154112) <https://www.rahfo.se>, Magnus  
33 Bergvalls Stiftelse, Cancerfonden, and Foundation for clinical-experimental cancer research.  
34

## 35 **ABSTRACT**

### 36 **Introduction**

37 In 2021, a joint ESGO/ESTRO/ESP committee updated their evidence-based guidelines for  
38 endometrial cancer, recommending a new risk grouping incorporating both clinicopathologic  
39 and molecular parameters. We applied the new risk grouping and compared the results to those  
40 of the prior 2016 clinicopathologic system.

### 41 **Materials and methods**

42 We classified molecularly a cohort of 604 women diagnosed with endometrial cancer using  
43 immunohistochemistry for TP53 and MMR proteins on a tissue microarray, as well as Sanger  
44 sequencing for *POLE* mutations. These results, combined with clinicopathologic data, allowed  
45 the patients to be risk grouped using both the new 2021 molecular/clinicopathologic parameters  
46 and the prior 2016 clinicopathologic system. In addition, clinical treatment and outcome data  
47 were collected from medical records.

### 48 **Results**

49 The application of the 2021 molecular markers shows Kaplan-Meier curves with a significant  
50 difference between the groups for all survival. Molecular classification under the 2021  
51 guidelines revealed a total of 39 patients (39/594, 7%) with a change in risk group in relation  
52 to the 2016 classification system: the shift was alone due to either P53abn or *POLEmut*  
53 molecular marker. In order to ensure correct 2021 molecular risk classification, not all patients  
54 with endometrial cancer need a molecular diagnostic: 386 (65.0%) cases would need to be  
55 analyzed by TP53 IHC, only 44 (7.4%) by MMR IHC and 109 (18.4%) *POLE* sequencing  
56 reactions.

### 57 **Conclusion**

58 Application of the 2021 molecular risk groups is feasible and shows significant differences in  
59 survival. IHC for TP53 and MMR and applying *POLE* sequencing is only needed in selected

60 cases and leads to shifting risk groups both upward and downward for a sizeable number of  
61 patients.

62

63 **Keywords:** endometrial cancer, genomic subgroups, risk group, MMR, POLE, P53

64

65 **Abbreviations:** EC, endometrial cancer; LVSI, lymphovascular space invasion; POLE,  
66 polymerase epsilon; TGCA, The Cancer Genome Atlas; TMA, tissue microarray; OS, overall  
67 survival, DSS, disease-specific survival, RFS, recurrence-free survival, IHC,  
68 Immunohistochemistry, ESGO, European Society of Gynecological Oncology, ESTRO,  
69 European Society for Radiotherapy and Oncology, ESP , European Society of Pathology.

70

71

## 72 INTRODUCTION

73 In January 2021 the European Society of Gynecological Oncology (ESGO), the European  
74 Society for Radiotherapy and Oncology (ESTRO), and the European Society of Pathology  
75 (ESP) published updated guidelines for risk group determination in endometrial cancer,  
76 integrating both molecular diagnostics and clinicopathologic variables, with the goal of  
77 improving patient treatment[1]. These molecular prognostic risk groups represent a  
78 revolutionary change in the management of women with endometrial cancer (EC) and will  
79 require a total reorientation of how these patients are diagnosed and treated. Prior to the  
80 issuance of these guidelines, prognostic risk groups were based on postoperative  
81 clinicopathologic findings such as tumor histology, stage of disease, grade, and lymphovascular  
82 space invasion (LVSI) [2–5]. The new 2021 molecular risk groups are a hybrid of  
83 clinicopathologic findings and molecular markers. The new risk grouping serves as the basis  
84 for patient management, especially the use and type of adjuvant therapy. However,  
85 implementation of the 2021 molecular risk groups carries with it numerous challenges. These  
86 include, but are not limited to, (1) introduction of molecular testing for a relatively common  
87 tumor that is treated at both specialized cancer centers and smaller, more community-based,  
88 centers, (2) interpretation of molecular diagnostic results by clinical teams that may not have  
89 encountered them previously, and (3) movement of patients between risk groups in sometimes  
90 surprising ways, which may cause worry and concern by the patient and care team.

91 The molecular understanding of EC has seen an incredible evolution over the past decade. In  
92 2014, The Cancer Genome Atlas (TCGA) [6] developed an integrated genomic classification  
93 of endometrial cancer (EC), dividing cases into four genomic subgroups: (1) copy number high  
94 “serous-like,” (2) copy number low “endometrioid-like,” (3) polymerase epsilon (*POLE*)  
95 ultramutated, and (4) microsatellite unstable “MSI (hypermutated)”, with each group exhibiting  
96 a different progression-free survival. Since then, numerous research groups have explored ways

97 to introduce a clinically applicable molecular-based classification system for EC[7–15]. These  
98 molecular markers have been evaluated in isolation, as well as in classification schema, in order  
99 to compare them with traditional clinicopathologic based systems. Finally, in the 5<sup>th</sup> addition  
100 of the WHO Classification of Female Genital Tumors, published in September 2019, the  
101 molecular classification is integrated, finalizing the definite place of molecular markers in the  
102 diagnosis of EC [16].

103 The primary objective of the current study was to evaluate the implementation of the 2021  
104 ESGO/ESTRO/ESP molecular risk groups in a large and unselected EC patient cohort. A  
105 second objective was to compare the new risk groups with the 2016 clinicopathologic only,  
106 non-molecular risk groups. A third objective was to identify challenges to implementation, with  
107 the goal of providing concrete guidance to clinics, large and small, implementing this system  
108 [2,17].

109

## 110 **MATERIALS AND METHODS**

### 111 **Patient cohort and clinical data**

112 The study was approved by the local ethics boards in Stockholm and in Bern (2016/362 and  
113 2018-00479, respectively); ethics approval for the bio banking of tissue was granted from the  
114 regional biobank review board in each country. All women provided written informed consent  
115 for the use of their bio banked tissue and clinical data for research purposes.

116 This is a retrospective cohort study; the women were selected without reference to tumor type  
117 and therefore can be said to represent a population-based cohort of all EC women during the  
118 years 2004-2015. A cohort of 349 women diagnosed with EC from Karolinska University  
119 Hospital (2011-2015) and 255 women from Bern University Hospital (2004-2015) was  
120 established (KImBer cohort). Clinical and radiological data, medical history, and treatment data  
121 as well as pathology-associated parameters were obtained through a review of digital medical

122 records and pathology reports. Follow-up data on recurrence and survival are available through  
123 standardized databases and follow-up controls in both clinics. All pathology slides were  
124 reviewed by reference pathologists (Karolinska cases, DN, JC, and Bern cases, TR) to confirm  
125 grade and histotype.

126

### 127 **Molecular classification: 2021 ESGO/ESTRO/ESP**

128 Molecular analysis was applied following the WHO Classification of Tumours, 5th Edition,  
129 Volume 4: Female Genital Tumours. Cases were classified as *POLE*mut, MMRd, NSMP, and  
130 p53abn [7–10,18–21]). We constructed a TMA (tissue microarray) upon which we performed  
131 immunohistochemistry for p53 and MMR proteins MLH1, MSH2, MSH6, and PMS2.  
132 Mismatch repair protein deficiency (MMRd) was defined as loss of nuclear staining in at least  
133 one out of the four MMR proteins. P53 aberrant protein expression (p53abn) was defined as  
134 either complete loss of nuclear protein expression or strong homogenous nuclear  
135 overexpression.

### 136 ***POLE* sequencing**

137 To identify *POLE* (ultramutated) tumors, DNA was isolated from two 1 mm core punches of  
138 formalin-fixed paraffin-embedded tumor tissue using a commercial DNA extraction kit  
139 (PerkinElmer chemagen Technology, chemagic protocol name: DNA formalin-fixed paraffin-  
140 embedded external lysis VD101124.che) according to the manufacturer's protocol. All EC cases  
141 were analyzed for mutations of *POLE* gene (NM.006231) exons 9-14 by Sanger sequencing.  
142 Details of primers and interpretation of mutations has been published previously[15].

143 A tumor was considered *POLE* mutated (*POLE*mut) if sequencing proved the existence of a  
144 hotspot mutation in the exonuclease domain *POLE*, as described in our publication on  
145 *POLE*mut tumors [15] and verified by Gilks et al [22].

### 146 **Multiple classifiers**

147 Analyzing tumors for p53, MMR and *POLE* can reveal defects in multiple molecular markers.  
148 These tumors were classified as recommended in the 2021 ESGO/ESTRO/ESP system (i.e.,  
149 first *POLE*mut, then MMRd, then p53abn).

150

### 151 **Prognostic risk grouping**

152 The patients were divided into two prognostic risk groups: (1) addition of the new 2021  
153 ESGO/ESTRO/ESP molecular classification system and (2) the 2016 clinicopathologic system  
154 only.

155 A flow chart was developed, that allowed an identification of each patient into a risk category  
156 by using as few supplementary tasting as possible.

### 157 **STATISTICAL ANALYSIS**

158 To address the first objective of our study, prognostic risk groups were examined looking at  
159 overall survival (OS), disease-specific survival (DSS), and recurrence-free survival (RFS) using  
160 both Kaplan–Meier plots with log-rank significance testing and Cox proportional-hazards  
161 regression models.

162 Associations between molecular classifiers and other variables such as demographic and  
163 clinicopathological factors were tested using non-parametric tests. T-test and ANOVA were  
164 used for continuous variables; log-rank test, chi-square, and Fisher’s exact test were used for  
165 categorical variables.

166 A statistical significance level of 0.05 was used. IBM SPSS software version 24.0 was applied.

167

## 168 **RESULTS**

### 169 **General clinicopathological characteristics**

170 Initially, 604 women were included in this study. Molecular classification (one or more  
171 molecular markers) was not possible for 10 of them; these women were therefore excluded



172 from the analyses. At initial diagnosis, mean and median ages were 66.1/67 (range 31-93) years,  
173 and BMI was 29/27.6 (range 16.4-58.6). Only 53 (8.9%) of the women were premenopausal at  
174 the time of initial diagnosis. Most of the women were either para 2 (32.5%) or nulliparous  
175 (23.6%) (range 0-9).

## 176 **Application of Molecular Markers**

177 Results of the molecular classification and associations with clinicopathological characteristics  
178 are summarized in Table 1.

179 Only three clinicopathological factors showed no significant association with the molecular  
180 classification (BMI, myometrial invasion and lymph node status: *p* values of 0.68, 0.08, and  
181 0.2 respectively). Or else the groups differ significantly in their clinical features.

## 182 **2021 ESGO/ESTRO/ESP Molecular Prognostic Risk Groups**

183 Application of the 2021 molecular prognostic risk groups to the cohort revealed the  
184 distribution in the five risk groups: low risk N=243(40.9%), intermediate risk N=84 (14.1%)  
185 high-intermediate N=89 (15.0%) high risk N=148 (24.9%) and advanced N=30 (5.1%). A  
186 detailed comparison of the 2021 molecular with the 2016 clinicopathologic only prognostic  
187 risk groups is shown as a cross table (Table 2).

188

189 A total of 39 patients changed group in the new classification. In 17 patients, there is a shift  
190 upward due to classification as p53abn. In 22 patients, there is a shift downward due to  
191 classification as *POLE*mut. The shift of patients between prognostic risk groups, as well as  
192 the distribution of the molecular subtypes within the prognostic groups, is shown in Figure 1.  
193 Additionally, three patients show advanced, FIGO Stage 3 disease and *POLE* mutation. All  
194 three patients had hotspot mutations (S297F, V411L and P286R). In the 2021 molecular risk  
195 groups, these patients are not clearly classifiable and were left in the high / advanced risk group.

196

## 197 **Double and Triple Classifiers**

198 In this cohort, 47 patients had tumors with multiple molecular aberrations. There were 45  
199 tumors with double aberrations (32 with P53abn and MMRd, 10 with P53abn and POLEmut,  
200 2 with MMRd and POLEmut). There were 2 cases with three aberrations (i.e. P53abn,  
201 POLEmut and MMRd).

202 A total of 126 tumors were P53abn, but of these 10 had a POLEmut and 32 were MMRd (2  
203 both). Thus, only 86 tumors were finally classified as P53abn. Similarly, 204 tumors showed  
204 MMRd, but of these 5 had a POLEmut. Thus, only 199 tumors were finally classified as  
205 MMRd.

206 Double and triple classifiers influence the shift of cases between 2021 prognostic risk groups.  
207 For example, as described above, a case can be placed in the P53abn classification group only  
208 if POLEmut and MMRd have been excluded. In this cohort, 10/594 (1.7%) had both a POLE  
209 and p53 mutation, of these 9/10 (90%) were FIGO stage I or II. Similarly, a case can be  
210 placed in the MMRd classification group only if a POLEmut has been excluded. In this  
211 cohort, 2/594 (0.3%) had both a POLEmut and MMRd.

## 212 **Assessment of prognosis**

213 The 2021 molecular risk groups show a significant difference (all log rank  $p=0.000$ ) among  
214 the groups when considering recurrence free survival (RFS), disease specific survival (DSS)  
215 and overall survival (OS) (Figure 2).

216

## 217 **Implementation of molecular diagnostics**

218 For the 2021 molecular risk grouping, a shift upward is seen only in FIGO Stage I and II tumors  
219 classified as P53abn. A shift downward was seen only in tumors classified as *POLEmut*.  
220 Therefore, we tested a model where few supplementary diagnostic tests are applied.

221 In our study we have N=498, 83.3% with all FIGO Stage I and II tumors. In the low risk group  
222 with endometrioid Histology, no myometrial invasion, Grade 1 or 2 and no LVSI no molecular  
223 analysis is needed, since even if they are P53abn they stay in low risk. In the endometrioid cohort  
224 therefore, in N=386 (65.0%) patients we need immunohistochemistry for p53. In cases showing  
225 an aberrant staining pattern (P53abn) (N=44, 7.4%), immunohistochemistry is needed for  
226 MMRd and sequencing for *POLE*mut, to allow correct molecular classification.  
227 In order to identify high risk cases that might potentially be shifted downward due to *POLE*mut  
228 classification, an additional 109 (18.4%) cases would need to be *POLE* sequenced.  
229 Therefore, as summarized in Figure 3, in this population based cohort of patients with EC with  
230 N=594 patients, in 65% need a staining for P53, 7.4% for MMR Proteins and a total of N=153  
231 (25.8%) need a sequencing for *POLE*mut (endometrioid and non-endometrioid) to allow a  
232 correct 2021 risk grouping.

233

## 234 **DISCUSSION**

235 In this study, we evaluate the implementation of the 2021 molecular ESGO/ESTRO/ESP  
236 prognostic risk groupings in an unselected cohort of endometrial cancer patients. We identify  
237 several areas where these groupings differ from their predecessor, and which may cause  
238 difficulty upon implementation.

239 We can confirm that, the implementation of the 2021 molecular prognostic groupings show  
240 significant differences in all survival outcomes, which proves the practicability of the new risk  
241 grouping. The last adaptation with introduction of LVSI was performed 2016 showing similar  
242 results in stratifying the risk groups[23,24].

243 Implementation of the 2021 molecular risk groups on the cohort reveals several important  
244 aspects. First, not all P53abn cases are non endometrioid. Indeed, 26 endometrioid FIGO Grade  
245 1 and 2 (low-grade) cases were identified, which would be improperly classified if molecular

246 markers had not been applied. Are all MMRd cases endometrioid? Even here, 29 MMRd cases  
247 were judged to be non endometrioid. The results indicate that using histologic subtype to  
248 attempt to “triage” cases to molecular subgroups may lead to significant problems with  
249 classification and suggest that markers should be applied independent of histology, this was  
250 also confirmed in the recent publication by Weigelt et al[25]. Applying TP53  
251 immunohistochemistry on all cases of endometrioid FIGO 1 and 2 would represent a significant  
252 change for most pathology labs[26]. In our cohort, fully one-third (26/80, 33%) of P53abn cases  
253 would have been missed if endometrioid grade 1 and 2 cases were not stained. Similarly, 15%  
254 (29/199) of MMRd cases would have been missed if only endometrioid cases were evaluated  
255 for MMRd. Finally, it is important for labs to have access to *POLE* and MMR analyses, because  
256 assignment to the TP53 molecular group should occur only if *POLE*mut and MMRd have been  
257 excluded. Similarly, assignment to MMRd requires that a *POLE*mut has been excluded. In our  
258 algorithm we could show, that not in all cases a molecular diagnostic is needed, rather only in  
259 FIGO Stage I and II. By applying IHC for P53 in 65% and *POLE* sequencing in less than 20%  
260 we found a model that is probably more practicable than performing a next generation  
261 sequencing for all patients with EC.

262 Comparing the 2016 clinicopathologic and the 2021 molecular risk classification reveals  
263 several interesting aspects. First, 8% of high-risk cases (12/145) downshifted to low-risk after  
264 molecular classification due to *POLE*mut. These cases are specifically mentioned in the  
265 recommendations as “rare”, but in our cohort they represented the most prevalent reason for  
266 risk group shifting[22,27]. In the PORTEC-3 trial, *POLE*mut stage 3 patients had an excellent  
267 outcome, but all were treated with external beam radiotherapy. Second, 5% of low-risk cases  
268 (12/235) shifted upward to high-risk after molecular classification, due to P53abn. Given that  
269 low-risk disease is the most common, this means that potentially 1 out of 20 low-risk cases may  
270 be misclassified, and subsequently undertreated, without molecular classification. Again,

271 PORTEC-3 indicates that combined therapy leads to a statistically significant survival  
272 advantage for P53abn stage 1-3 [28]. Finally, note that the 2021 recommendations make a  
273 difference between P53abn with and without myometrial invasion[1].

274 Should molecular evaluation be performed preoperatively? Studies have shown that molecular  
275 markers performed upon biopsy material show similar results to those performed on  
276 hysterectomy material[29]. Indeed, biopsy material can have the advantage of more rapid  
277 fixation, potentially allowing for more reliable analysis. However, it is important to note that  
278 the 2021 molecular risk groups cannot be determined using biopsy material alone, due to the  
279 inclusion of clinicopathologic variables such as FIGO Stage and lymphovascular space  
280 invasion. Thus, it is not clear that information beyond histologic tumor type and grade is  
281 necessary.

282 Is it necessary to identify MMRd patients if it does not contribute to their risk grouping? There  
283 are several motivations for identifying MMRd patients beyond risk classification, including the  
284 desire to identify patients with Lynch syndrome. This is a worthy and important goal for reasons  
285 outlined in numerous publications[30,31]. However, from the standpoint of risk classification,  
286 MMRd is necessary to correctly classify patients as P53abn. It is important to keep the  
287 motivation for the testing clear, so that clinical genetics is consulted and involved in these  
288 changes in practice.

289 Evaluating the minimum testing regime necessary to correctly classify patients revealed that  
290 correct classification could be achieved in this cohort with 386/594 (65%) TP53  
291 immunohistochemistry, 44/594 (7%) MMR immunohistochemistry, and 153 (26%) *POLE*mut  
292 analyses. Note that additional MMRd analyses may be useful for adjuvant therapy if  
293 immunotherapy is potentially indicated.

294

295 **CONCLUSION**

296 The 2021 ESGO/ESTRO/ESP molecular risk groups represent a fundamental change in the  
297 clinical diagnosis and treatment of endometrial cancer. Implementing and evaluating these  
298 changes is a complex task that is only just beginning. Compared to the 2016 clinicopathologic  
299 risk groups, 3.7% of high-risk patients were shifted downward to low-risk due to a *POLE*  
300 mutation, and 2.9% of low-risk patients were shifted upward to high risk due to a P53abn  
301 classification. It is possible to significantly reduce the number of analyses required to  
302 implement the classification if resources are limited. Finally, it is important to note that the  
303 P53abn group requires exclusion of *POLE*mut and MMRd, making it distinct from prior  
304 descriptions of TP53 mutated tumors (where these exclusions were not made). Although no  
305 cases were shifted upward or downward due to MMRd, this analysis is useful in identifying  
306 women with Lynch syndrome or as a marker for immunotherapy.

307

308

### 309 **Conflict of interest statement**

310 JWC has received funding from ThermoFisher Scientific / Affymetrix for a different study.

311 The authors have stated explicitly that there is otherwise no conflict of interest in connection  
312 with this article.

313

### 314 **Authors' contributions:**

315 SI, EE, DN, TTR and JWC designed the study protocol and data collection, FR, FS and SI  
316 collected, cleaned and analysed the data, SI, DO, DN and JWC performed statistical analysis, MG  
317 performed the molecular analysis and analysed the mutations, all authors drafted and revised the  
318 paper.

319

320

## 321 References

- 322 [1] N. Concin, X. Matias-, I. Vergote, D. Cibula, M.R. Mirza, S. Marnitz, J. Ledermann, T.  
323 Bosse, C. Chargari, A. Fagotti, ESGO / ESTRO / ESP guidelines for the management  
324 of patients with endometrial carcinoma, (2021) 12–39. doi:10.1136/ijgc-2020-002230.
- 325 [2] N. Colombo, C. Creutzberg, F. Amant, T. Bosse, A. González-Martín, J. Ledermann,  
326 C. Marth, R. Nout, D. Querleu, M.R. Mirza, C. Sessa, ESMO-ESGO-ESTRO  
327 Endometrial Consensus Conference Working Group, ESMO-ESGO-ESTRO  
328 Consensus Conference on Endometrial Cancer: diagnosis, treatment and follow-up.,  
329 Ann. Oncol. Off. J. Eur. Soc. Med. Oncol. 27 (2016) 16–41.  
330 doi:10.1093/annonc/mdv484.
- 331 [3] S. Bendifallah, G. Canlorbe, P. Collinet, E. Arsène, F. Huguet, C. Coutant, D. Hudry,  
332 O. Graesslin, E. Raimond, C. Touboul, E. Darai, M. Ballester, Just how accurate are  
333 the major risk stratification systems for early-stage endometrial cancer?, Br. J. Cancer.  
334 112 (2015) 793–801. doi:10.1038/bjc.2015.35.
- 335 [4] S. Bendifallah, G. Canlorbe, E. Raimond, D. Hudry, C. Coutant, O. Graesslin, C.  
336 Touboul, F. Huguet, A. Cortez, E. Darai, M. Ballester, A clue towards improving the  
337 European Society of Medical Oncology risk group classification in apparent early stage  
338 endometrial cancer? Impact of lymphovascular space invasion, Br. J. Cancer. 110  
339 (2014) 2640–2646. doi:10.1038/bjc.2014.237.
- 340 [5] T.W. Kong, S.-J. Chang, J. Paek, Y. Lee, M. Chun, H.-S. Ryu, Risk group criteria for  
341 tailoring adjuvant treatment in patients with endometrial cancer: a validation study of  
342 the Gynecologic Oncology Group criteria, J. Gynecol. Oncol. 26 (2015) 32.  
343 doi:10.3802/jgo.2015.26.1.32.
- 344 [6] Cancer Genome Atlas Research Network, C. Kandoth, N. Schultz, A.D. Cherniack, R.  
345 Akbani, Y. Liu, H. Shen, A.G. Robertson, I. Pashtan, R. Shen, C.C. Benz, C. Yau,  
346 P.W. Laird, L. Ding, W. Zhang, G.B. Mills, R. Kucherlapati, E.R. Mardis, D.A.  
347 Levine, Integrated genomic characterization of endometrial carcinoma., Nature. 497  
348 (2013) 67–73. doi:10.1038/nature12113.
- 349 [7] A. Talhouk, M.K. McConechy, S. Leung, W. Yang, A. Lum, J. Senz, N. Boyd, J. Pike,  
350 M. Anglesio, J.S. Kwon, A.N. Karnezis, D.G. Huntsman, C.B. Gilks, J.N. McAlpine,  
351 Confirmation of ProMisE: A simple, genomics-based clinical classifier for endometrial  
352 cancer, Cancer. 123 (2017) 802–813. doi:10.1002/cncr.30496.
- 353 [8] A. Talhouk, L.N. Hoang, M.K. McConechy, Q. Nakonechny, J. Leo, A. Cheng, S.  
354 Leung, W. Yang, A. Lum, M. Köbel, C.H. Lee, R.A. Soslow, D.G. Huntsman, C.B.  
355 Gilks, J.N. McAlpine, Molecular classification of endometrial carcinoma on diagnostic  
356 specimens is highly concordant with final hysterectomy: Earlier prognostic information  
357 to guide treatment, Gynecol. Oncol. 143 (2016) 46–53.  
358 doi:10.1016/j.ygyno.2016.07.090.
- 359 [9] A.N. Karnezis, S. Leung, J. Magrill, M.K. McConechy, W. Yang, C. Chow, M. Kobel,  
360 C.-H. Lee, D.G. Huntsman, A. Talhouk, F. Kommoss, C.B. Gilks, J.N. McAlpine,  
361 Evaluation of endometrial carcinoma prognostic immunohistochemistry markers in the  
362 context of molecular classification, J. Pathol. Clin. Res. 3 (2017) 279–293.  
363 doi:10.1002/cjp2.82.
- 364 [10] A. Talhouk, M.K. McConechy, S. Leung, H.H. Li-Chang, J.S. Kwon, N. Melnyk, W.  
365 Yang, J. Senz, N. Boyd, A.N. Karnezis, D.G. Huntsman, C.B. Gilks, J.N. McAlpine, A  
366 clinically applicable molecular-based classification for endometrial cancers, Br. J.  
367 Cancer. 113 (2015) 299–310. doi:10.1038/bjc.2015.190.
- 368 [11] S. Kommoss, M.K. McConechy, F. Kommoss, S. Leung, A. Bunz, J. Magrill, H.  
369 Britton, F. Kommoss, F. Grevenkamp, A. Karnezis, W. Yang, A. Lum, B. Krämer, F.



- 370 Taran, A. Staebler, S. Lax, S.Y. Brucker, D.G. Huntsman, C.B. Gilks, J.N. McAlpine,  
371 A. Talhouk, Final Validation of the ProMisE Molecular Classifier for Endometrial  
372 Carcinoma in a Large Population-based Case Series., *Ann. Oncol. Off. J. Eur. Soc.*  
373 *Med. Oncol.* (2018). doi:10.1093/annonc/mdy058.
- [12] L. Vermij, V. Smit, R. Nout, T. Bosse, Incorporation of molecular characteristics into  
374 endometrial cancer management, *Histopathology*. 76 (2020) 52–63.  
375 doi:10.1111/his.14015.
- [13] E. Stelloo, T. Bosse, R.A. Nout, H.J. Mackay, D.N. Church, H.W. Nijman, A. Leary,  
376 R.J. Edmondson, M.E. Powell, E.J. Crosbie, H.C. Kitchener, L. Mileskin, P.M.  
377 Pollock, V.T. Smit, C.L. Creutzberg, Refining prognosis and identifying targetable  
378 pathways for high-risk endometrial cancer; A TransPORTEC initiative, *Mod. Pathol.*  
379 28 (2015) 836–844. doi:10.1038/modpathol.2015.43.
- [14] J. McAlpine, A. Leon-Castillo, T. Bosse, The rise of a novel classification system for  
380 endometrial carcinoma; integration of molecular subclasses, *J. Pathol.* (2018).  
381 doi:10.1002/path.5034.
- [15] S. Imboden, D. Nastic, M. Ghaderi, F. Rydberg, T.T. Rau, M.D. Mueller, E. Epstein,  
382 J.W. Carlson, Phenotype of POLE-mutated endometrial cancer, *PLoS One*. (2019).  
383 doi:10.1371/journal.pone.0214318.
- [16] E. Oliva, A. Cheung, S. Lax, WHO Classification of Tumours of the Female Genital  
384 Tract, 2020.
- [17] N. Colombo, E. Preti, F. Landoni, S. Carinelli, A. Colombo, C. Marini, C. Sessa,  
385 Endometrial cancer: ESMO clinical practice guidelines for diagnosis, treatment and  
386 follow-up, *Ann. Oncol.* 24 (2013). doi:10.1093/annonc/mdt353.
- [18] D.N. Church, E. Stelloo, R.A. Nout, N. Valtcheva, J. Depreeuw, N. ter Haar, A. Noske,  
387 F. Amant, I.P.M.M. Tomlinson, P.J. Wild, D. Lambrechts, I.M. Jürgenliemk-Schulz,  
388 J.J. Jobsen, V.T.H.B.M. Smit, C.L. Creutzberg, T. Bosse, Prognostic significance of  
389 POLE proofreading mutations in endometrial cancer., *J. Natl. Cancer Inst.* 107 (2015)  
390 402. doi:10.1093/jnci/dju402.
- [19] E. Stelloo, R.A.A. Nout, E.M.M. Osse, I.J. Jürgenliemk-Schulz, J.J.J. Jobsen, L.C.C.  
391 Lutgens, E.M.M. van der Steen-Banasik, H.W.W. Nijman, H. Putter, T. Bosse, C.L.L.  
392 Creutzberg, V.T.H.B.M.T.H.B.M. Smit, I.J. Jürgenliemk-Schulz, J.J.J. Jobsen, L.C.C.  
393 Lutgens, E.M.M. van der Steen-Banasik, H.W.W. Nijman, H. Putter, T. Bosse, C.L.L.  
394 Creutzberg, V.T.H.B.M.T.H.B.M. Smit, Improved risk assessment by integrating  
395 molecular and clinicopathological factors in early-stage endometrial cancer - combined  
396 analysis of PORTEC cohorts, *Clin. Cancer Res.* 22 (2016). doi:10.1158/1078-  
397 0432.CCR-15-2878.
- [20] C.M. Cosgrove, D.L. Trichter, D.E. Cohn, D.G. Mutch, C.M. Rush, H.A. Lankes,  
398 W.T. Creasman, D.S. Miller, N.C. Ramirez, M.A. Geller, M.A. Powell, F.J. Backes,  
399 L.M. Landrum, C. Timmers, A.A. Suarez, R.J. Zaino, M.L. Pearl, P.A. DiSilvestro,  
400 S.B. Lele, P.J. Goodfellow, P. Goodfellow, An NRG Oncology/GOG study of  
401 molecular classification for risk prediction in endometrioid endometrial cancer HHS  
402 Public Access, *Gynecol Oncol.* 148 (2018) 174–180. doi:10.1016/j.ygyno.2017.10.037.
- [21] E. Stelloo, T. Bosse, R.A. Nout, H.J. MacKay, D.N. Church, H.W. Nijman, A. Leary,  
403 R.J. Edmondson, M.E. Powell, E.J. Crosbie, H.C. Kitchener, L. Mileskin, P.M.  
404 Pollock, V.T. Smit, C.L. Creutzberg, Refining prognosis and identifying targetable  
405 pathways for high-risk endometrial cancer; a TransPORTEC initiative, *Mod. Pathol.* 28  
406 (2015) 836–844. doi:10.1038/modpathol.2015.43.
- [22] A. León-Castillo, H. Britton, M.K. McConechy, J.N. McAlpine, R. Nout, S. Kommos,  
407 S.Y. Brucker, J.W. Carlson, E. Epstein, T.T. Rau, T. Bosse, D.N. Church, C.B. Gilks,  
408 Interpretation of somatic POLE mutations in endometrial carcinoma., *J. Pathol.* 250  
409



- 420 (2020) 323–335. doi:10.1002/path.5372.
- 421 [23] S. Bendifallah, L. Ouldamer, V. Lavoue, G. Canlorbe, E. Raimond, C. Coutant, O.  
422 Graesslin, C. Touboul, P. Collinet, E. Daraï, M. Ballester, Patterns of recurrence and  
423 outcomes in surgically treated women with endometrial cancer according to ESMO-  
424 ESGO-ESTRO Consensus Conference risk groups: Results from the FRANCOGYN  
425 study Group, *Gynecol. Oncol.* 144 (2017) 107–112. doi:10.1016/j.ygyno.2016.10.025.
- 426 [24] N. Colombo, C. Creutzberg, F. Amant, T. Bosse, A. González-Martín, J. Ledermann,  
427 C. Marth, R. Nout, D. Querleu, M.R. Mirza, C. Sessa, ESMO-ESGO-ESTRO  
428 Consensus Conference on Endometrial Cancer: diagnosis, treatment and follow-up,  
429 *Ann. Oncol. Off. J. Eur. Soc. Med. Oncol.* 27 (2016) 16–41.  
430 doi:10.1093/annonc/mdv484.
- 431 [25] A. Da, C. Paula, D.F. Delair, L. Ferrando, D.J. Fix, R.A. Soslow, K.J. Park, S. Chiang,  
432 J.S. Reis-filho, A. Zehir, M.T.A. Donoghue, M. Wu, D.N. Brown, R. Murali, C.F.  
433 Friedman, D. Zamarin, V. Makker, J.J. Mueller, M.M. Leitao, N.R. Abu-rustum, C.  
434 Aghajanian, B. Weigelt, Gynecologic Oncology Genetic and molecular subtype  
435 heterogeneity in newly diagnosed early- and advanced-stage endometrial cancer,  
436 *Gynecol. Oncol.* (2021). doi:10.1016/j.ygyno.2021.02.015.
- 437 [26] A. Manuscript, P. Onlinefirst, Downloaded from [clincancerres.aacrjournals.org](https://clincancerres.aacrjournals.org) on  
438 March 11, 2021. © 2021 American Association for Cancer Research., (2021).  
439 doi:10.1158/1078-0432.CCR-20-4436.
- 440 [27] D.N. Church, E. Stelloo, R.A. Nout, N. Valtcheva, J. Depreeuw, N. Ter Haar, A.  
441 Noske, F. Amant, I.P.M. Tomlinson, P.J. Wild, D. Lambrechts, I.M. J?rgenliemk-  
442 Schulz, J.J. Jobsen, V.T.H.B.M. Smit, C.L. Creutzberg, T. Bosse, Prognostic  
443 significance of POLE proofreading mutations in endometrial cancer, *J. Natl. Cancer*  
444 *Inst.* 107 (2015). doi:10.1093/jnci/dju402.
- 445 [28] S.M. De Boer, M.E. Powell, L.R. Mileshekin, H.J. Mackay, A. Leary, H.W. Nijman, N.  
446 Singh, P.M. Pollock, P. Bessette, A. Fyles, C. Haie-meder, V.T.H.B.M. Smit, R.J.  
447 Edmondson, H. Putter, H.C. Kitchener, E.J. Crosbie, M. De Bruyn, R.A. Nout, N.  
448 Horeweg, C.L. Creutzberg, T. Bosse, Molecular Classification of the PORTEC-3  
449 Trial for High-Risk Endometrial Cancer : Impact on Prognosis and Bene fi t From  
450 Adjuvant Therapy abstract, 38 (2021). doi:10.1200/JCO.20.00549.
- 451 [29] A. Talhouk, L.N. Hoang, M.K. Mcconechny, Q. Nakonechny, J. Leo, A. Cheng, S.  
452 Leung, W. Yang, A. Lum, M. Köbel, C.-H. Lee, R.A. Soslow, D.G. Huntsman, C.B.  
453 Gilks, J.N. Mcalpine, Molecular classification of endometrial carcinoma on diagnostic  
454 specimens is highly concordant with final hysterectomy: Earlier prognostic information  
455 to guide treatment, *Gynecol. Oncol.* 143 (2016) 46–53.  
456 doi:10.1016/j.ygyno.2016.07.090.
- 457 [30] A.M. Mills, E.A. Sloan, M. Thomas, S.C. Modesitt, M.H. Stoler, K.A. Atkins, C.A.  
458 Moskaluk, Clinicopathologic Comparison of Lynch Syndrome – associated and “  
459 Lynch-like ” Endometrial Carcinomas Identified on Universal Screening Using  
460 Mismatch Repair Protein Immunohistochemistry, 40 (2016) 155–165.
- 461 [31] C. Stinton, H. Fraser, L. Al-khudairy, R. Court, M. Jordan, D. Grammatopoulos, S.  
462 Taylor-phillips, Gynecologic Oncology Testing for lynch syndrome in people with  
463 endometrial cancer using immunohistochemistry and microsatellite instability-based  
464 testing strategies – A systematic review of test accuracy, *Gynecol. Oncol.* 160 (2021)  
465 148–160. doi:10.1016/j.ygyno.2020.10.003.
- 466  
467

## 468 **Figures and table legends**

469 **Table 1.** Patient characteristics with molecular markers, demographic, and clinicopathologic  
470 factors.

471 **Table 2.** Shifting upward and downward of cases between the 2016 and the 2021 molecular  
472 risk groups. The cross table reveals a significant change in the prognostic groups, ( $p=0,000$   
473 Chi-square).

### 474 **Figure 1. Change between the old and new risk classification**

475 The shift of patients between prognostic risk groups, as well as the distribution of the  
476 molecular subtypes within the prognostic groups. Red arrow: p53abn, green: POLEmut

477

### 478 **Figure 2. Kaplan-Meier survival curves for PFS for molecular subgroups.** Kaplan-Meier

479 curves with log-rank test demonstrating the prognosis of patients stratified using the 2021  
480 ESGO/ESTRO/ESP molecular prognostic groups compared to the prior clinicopathologic  
481 only risk groups. Comparison performed showing Progression free survival (PFS), Disease  
482 specific survival (DSS) and overall survival (OS).

483

### 484 **Figure 3. Flow chart with selective analysis for molecular testing**

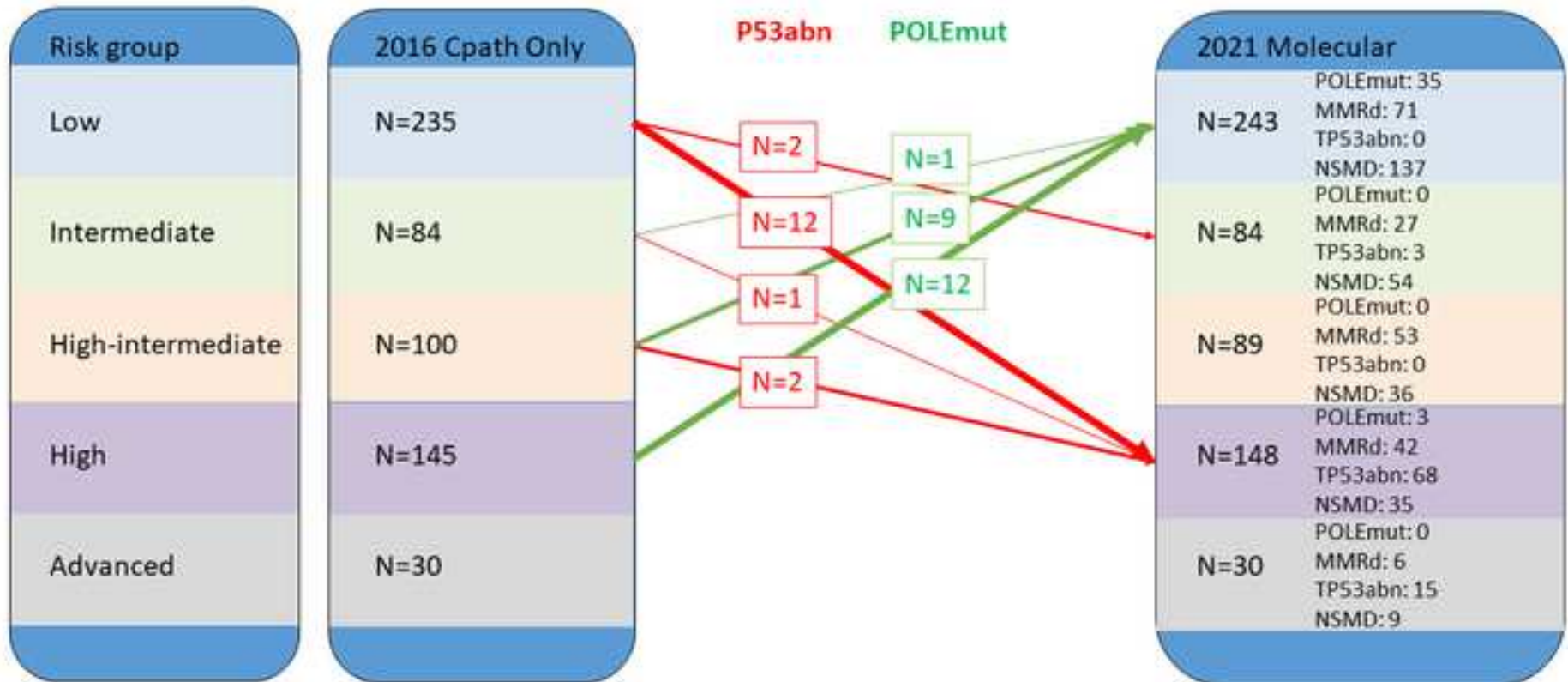
485 Flow chart, which shows how the patients can be triaged to allow testing for P53, MMR or  
486 POLE only when indicated.

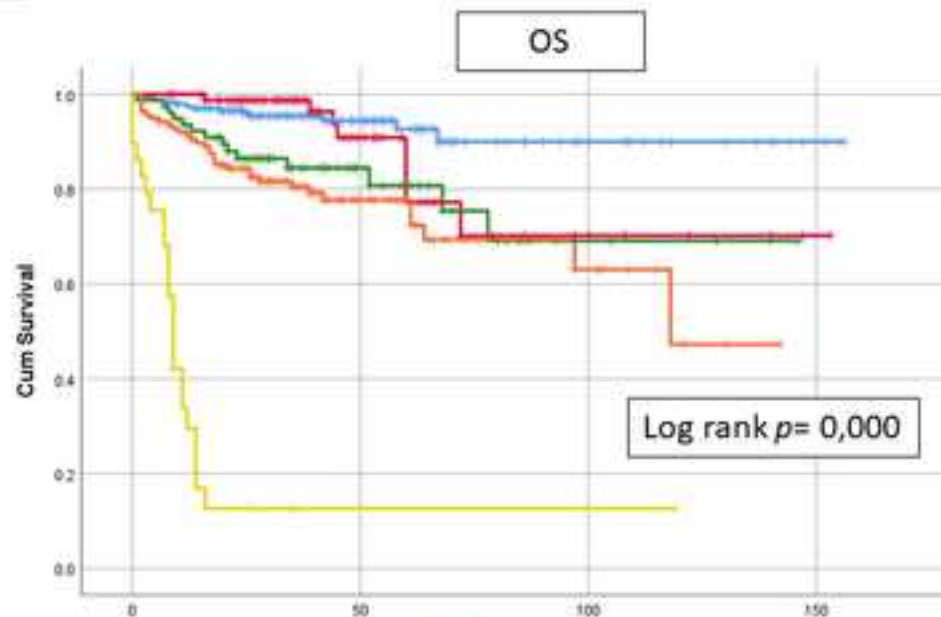
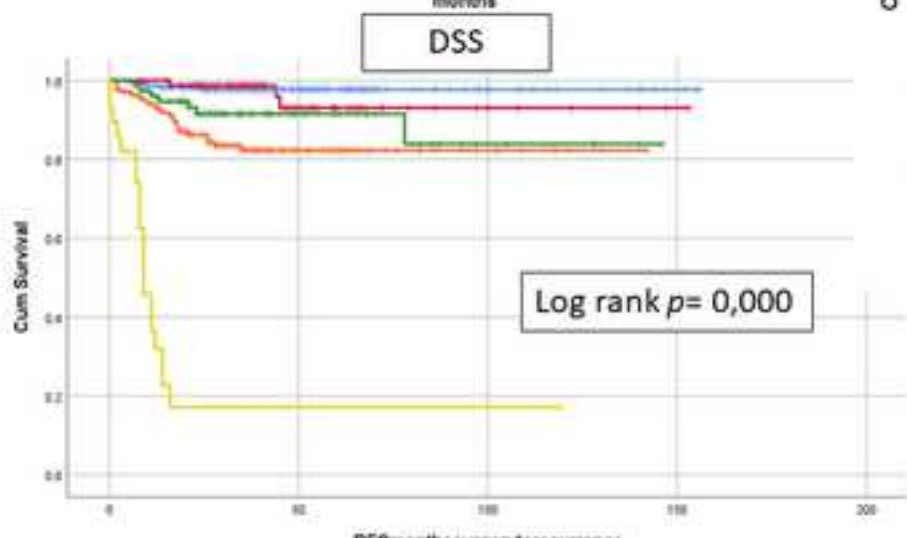
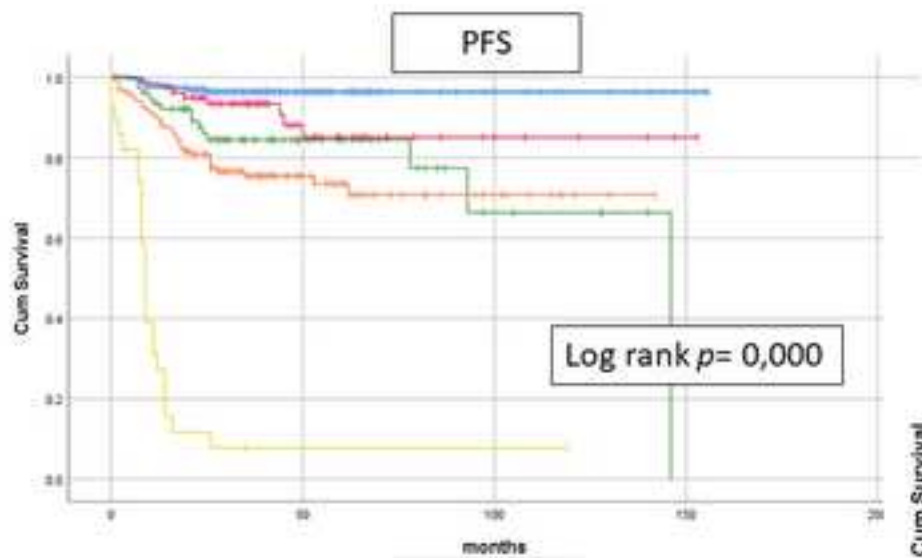
Table 1. Association between molecular markers, demographic and clinicopathologic factors.

Variable	Molecular classifier					
	Total N (%)	MMRd	POLEmut	P53adn	NSMP	p-value association
<b>No. Of patients (%)</b>	594 (100)	199 (33.5)	38 (6.4)	86 (14.5)	271 (45.6)	
<b>Age</b>						<i>p</i> =0.001
<i>Mean ±SE</i>	66±0.4	67.2±0.7	60.1±1.4	67±1	65.8±0.6	
<i>Median</i>	67	68	60.5	67	66	
<b>BMI mean±SE</b>	29.1±0.3	28.5±0.5	27.3±1.0	29.3±0.9	29.7±0.5	<i>p</i> =0.68
Missing	106	35	2	18	51	
<b>Grade (%)</b>						<i>p</i> =0.00
G1	226 (38.0)	59 (29.6)	13 (34.2)	14 (16.3)	140 (51.7)	
G2	202 (34.0)	88 (44.2)	9 (23.7)	12 (13.9)	93 (34.3)	
G3	166 (27.9)	52 (26.1)	16 (42.1)	60 (69.8)	38 (14.0)	
<b>Histotype</b>						<i>p</i> =0.00
Non-endo	100 (16.8)	29 (14.6)	7 (18.4)	48 (55.8)	16 (5.9)	
Endometrioid	494 (83.2)	170 (85.4)	31 (81.6)	38 (44.2)	255 (94.1)	
<b>LVSI</b>						<i>p</i> =0.00
Yes	161 (27.1)	62 (31.2)	15 (39.5)	34 (39.5)	50 (18.5)	
No	433 (72.9)	137 (68.8)	23 (60.5)	52 (60.5)	221 (81.5)	
<b>FIGO Stage</b>						<i>p</i> =0.00
I	443 (74.6)	147 (73.9)	33 (86.8)	49 (57.0)	214 (79.0)	
II	55 (9.3)	21 (10.6)	2 (5.2)	9 (10.5)	23 (8.5)	
III	69 (11.6)	27 (13.6)	3 (7.9)	14 (16.3)	25 (9.2)	
IV	27 (4.5)	4 (2.0)	0 (0)	14 (16.3)	9 (3.3)	
<b>Myometrial invasion</b>						<i>p</i> =0.08
intramucosal	53 (8.9)	16 (8.0)	1 (2.6)	4 (4.7)	32 (11.8)	
<50%	305 (51.3)	100 (50.3)	23 (60.5)	39 (45.3)	143 (52.8)	
>50%	235 (39.6)	82 (41.2)	14 (36.8)	43 (50.0)	96 (35.4)	
Missing	1 (0.2)	1 (0.5)	0	0	0	
<b>Lymph node status</b>						<i>p</i> =0.01
LN removed	323	84 (31.3)	22 (8.2%)	51(19.0)	111(41.1)	<i>p</i> =0.20
Pos	63 (10.6)	20 (10.1)	2 (5.3)	17 (19.8)	24 (8.9)	
Neg	236 (39.7)	76 (38.2)	21 (55.3)	41 (47.7)	98 (36.2)	
<b>Adjuvant treat</b>						<i>p</i> =0.00
No	342 (57.6)	111 (55.8)	22 (57.9)	28 (32.6)	181 (66.8)	
Yes	239 (40.2)	80 (40.2)	16 (42.1)	57 (66.2)	86 (31.7)	
Missing	13 (2.2)	8 (4.0)	0 (0)	1 (1.2)	4 (1.5)	
<b>Recurrence</b>						<i>p</i> =0.00
Yes	88 (14.8)	29 (14.6)	1 (2.6)	26 (30.2)	32 (11.8)	
No	470 (79.1)	152 (76.3)	36 (94.7)	58 (67.4)	224 (82.7)	
Missing	36 (6.1)	18 (9.0)	1 (2.6)	2 (2.3)	15 (5.5)	
<b>Survival</b>						<i>p</i> =0.00
Alive	486 (82.1)	162 (81.4)	37 (97.4)	60 (69.7)	227 (83.8)	
DOD	57 (9.6)	15 (7.5)	1 (2.6)	21 (24.4)	20 (7.4)	
Other cause	28 (4.7)	9 (4.5)	0	3 (3.5)	16 (5.9)	
Unknown cause	15 (2.5)	9 (4.5)	0		6 (2.2)	
Treatment	3 (0.5)	1 (0.5)	0	2 (2.3)	0	
Missing	3(0.5)	3 (1.5)	0	0	2 (0.7)	

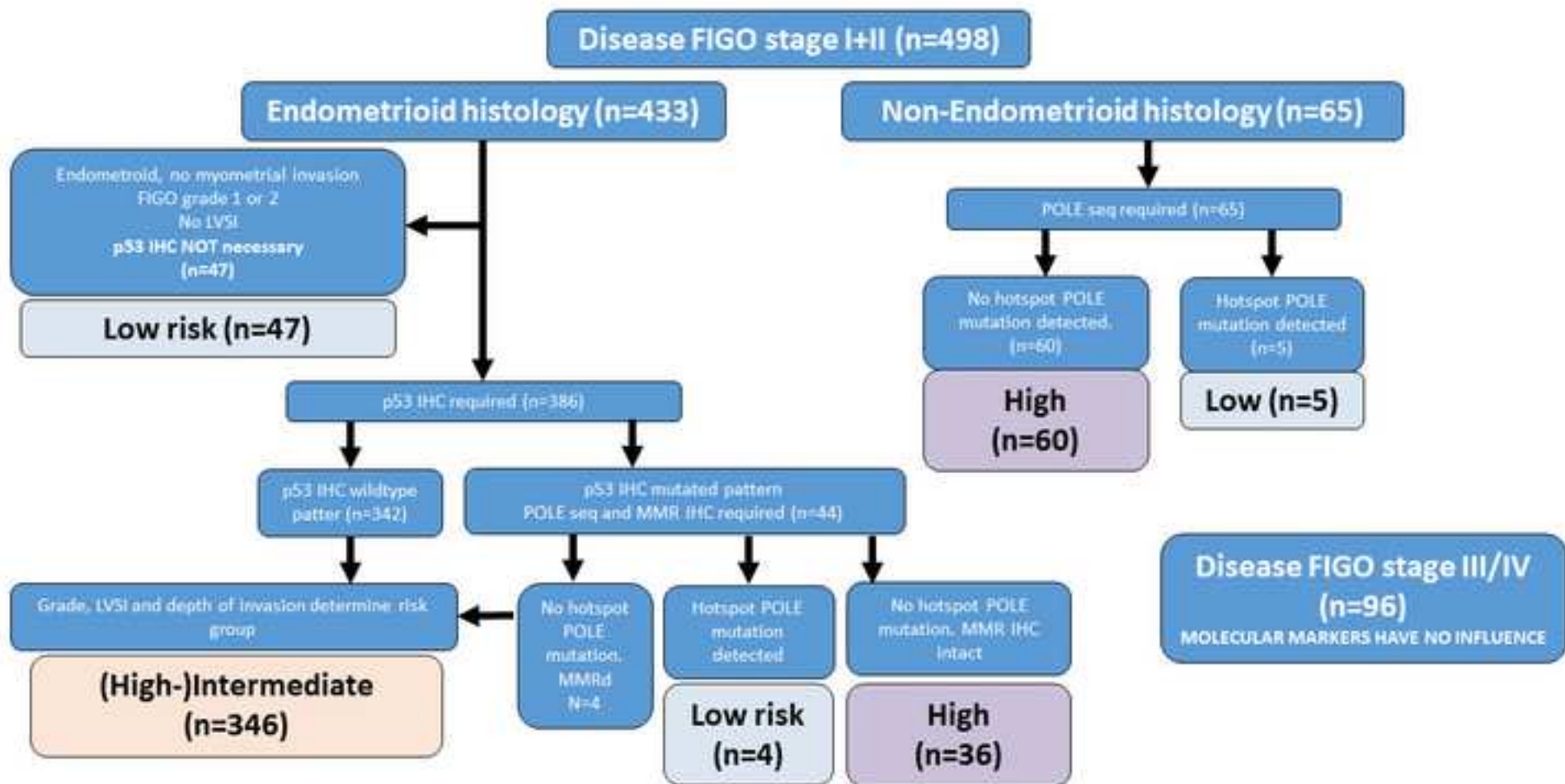
Table 2. Shifting upward and downward of cases between the 2016 and the 2021 molecular risk groups.

		2016 Clinicopathologic Risk Groups					
2021 ESGO/ESTRO/ESP Molecular Risk Groups		Low risk	Intermed risk	High- intermed risk	High risk	Advanced / metastatic	Total
	Low risk	221	1	9	12	0	243
	Intermed risk	2	82	0	0	0	84
	High- intermed risk	0	0	89	0	0	89
	High risk	12	1	2	133	0	148
	Advanced / metastatic	0	0	0	0	30	30
	Total	235	84	100	145	30	594





- low risk
- intermediate risk
- high intermediate risk
- high risk
- advanced



**Highlights:**

- Application of the 2021 ESGO/ESTRO/ESP molecular risk groups is feasible and shows significant differences in survival.
- Immunohistochemistry for TP53 and MMR and applying POLE sequencing is only needed in selected cases.
- The shift in the risk groups are done by P53 and POLEmut classifications in a sizeable number of patients.