

Mortality in individuals treated with COVID-19 convalescent plasma varies with the geographic provenance of donors

Katie L. Kunze^{1†}, Ph.D., Patrick W. Johnson^{2†}, B.S., Noud van Helmond³, M.D., Jonathon W. Senefeld⁴, Ph.D., Molly M. Petersen¹, B.S., Stephen A. Klassen⁴, Ph.D., Chad C. Wiggins⁴, Ph.D., Allan M. Klompas⁴, M.B., B.Ch., B.A.O., Katelyn A. Bruno⁵, Ph.D., John R. Mills⁶, Ph.D., Elitza S. Theel⁶, Ph.D., Matthew R. Buras¹, M.S., Michael A. Golafshar¹, M.S., Matthew A. Sexton⁴, M.D., Juan C. Diaz Soto⁴, M.D., Sarah E. Baker⁴, Ph.D., John R.A. Shepherd⁴, M.D., Nicole C. Verdun⁷, M.D., Peter Marks⁷, M.D., Ph.D., Nigel S. Paneth^{8,9}, M.D., Ph.D., M.P.H., DeLisa Fairweather⁵, Ph.D., R. Scott Wright^{10,11}, M.D., Arturo Casadevall¹², M.D., Ph.D., Rickey E. Carter^{#2}, Ph.D., Michael J. Joyner^{4**}, M.D., *[the US EAP COVID-19 Plasma Consortium](#)*,

[US EAP COVID-19 Plasma Consortium](#): Camille M. van Buskirk⁶, M.D., Jeffrey L. Winters⁶, M.D., James R. Stubbs⁶, M.D., Katherine A. Senese⁴, Michaela C. Pletsch⁴, Zachary A. Buchholtz⁴, Robert F. Rea¹⁰, M.D., Vitaly Herasevich³, M.D., Ph.D., Emily R. Whelan⁵, B.S., Andrew J. Clayburn⁴, B.S., Kathryn F. Larson¹⁰, M.D., Juan G. Ripoll⁴, M.D., Kylie J. Andersen⁴, Elizabeth R. Lesser², M.S., Matthew N.P. Vogt⁴, M.D., Joshua J. Dennis⁴, B.S., Riley J. Regimbal⁴, B.S., Philippe R. Bauer¹³, M.D., Ph.D., and Janis E. Blair¹⁴, M.D.

Affiliations

¹Department of Quantitative Health Sciences, Mayo Clinic, Scottsdale, Arizona

²Department of Quantitative Health Sciences, Mayo Clinic, Jacksonville, Florida

³Department of Anesthesiology, Cooper Medical School of Rowan University, Cooper University Health

⁴Department of Anesthesiology and Perioperative Medicine, Mayo Clinic, Rochester, Minnesota
Care, Camden, New Jersey

⁵Department of Cardiovascular Medicine, Mayo Clinic, Jacksonville, Florida

⁶Department of Laboratory Medicine and Pathology, Mayo Clinic, Rochester, Minnesota

⁷Center for Biologics Evaluation and Research, U.S. Food and Drug Administration, Silver Spring, Maryland

⁸Department of Epidemiology and Biostatistics, College of Human Medicine, Michigan State University, East Lansing, Michigan

⁹Department of Pediatrics and Human Development, College of Human Medicine, Michigan State University, East Lansing, Michigan

¹⁰Department of Cardiovascular Medicine, Mayo Clinic, Rochester, Minnesota

¹¹Human Research Protection Program, Mayo Clinic, Rochester, Minnesota

¹²Department of Molecular Microbiology and Immunology, Johns Hopkins Bloomberg School of Public Health, Baltimore, Maryland

¹³Department of Internal Medicine, Division of Pulmonary and Critical Care Medicine, Mayo Clinic, Rochester, Minnesota

¹⁴Department of Internal Medicine, Division of Infectious Diseases, Mayo Clinic, Phoenix, Arizona

*Correspondence:

Michael J. Joyner, M.D., Department of Anesthesiology and Perioperative Medicine
Mayo Clinic | 200 First Street SW | Rochester, MN 55905
joyner.michael@mayo.edu | 507-255-7197

[†]Dr. Kunze and Mr. Johnson contributed equally as first authors to the work of the study and manuscript.

[#]Drs. Carter and Joyner contributed equally as senior authors to the work of the study and manuscript.

Abstract

Treatment and prevention of coronavirus disease 2019 (COVID-19) have attempted to harness the immune response to severe acute respiratory syndrome coronavirus 2 (SARS-CoV-2) including the development of successful COVID-19 vaccines and therapeutics (e.g., Remdesivir, convalescent plasma [CP]). Evidence that SARS-CoV-2 exists as quasispecies evolving locally suggests that immunological differences may exist that could impact the effectiveness of antibody-based treatments and vaccines. Regional variants of SARS-CoV-2 were reported in the USA beginning in November 2020 but were likely present earlier. There is available evidence that the effectiveness of CP obtained from donors infected with earlier strains in the pandemic may be reduced when tested for neutralization against newer SARS-Cov-2 variants. Using data from the Expanded Access Program to convalescent plasma, we used a gradient-boosting machine to identify predictors of 30-day mortality and a series of regression models to estimate the relative risk of death at 30 days post-transfusion for those receiving near sourced plasma (defined as plasma transported ≤ 150 miles) vs. distantly sourced plasma (> 150 miles). Our results show a lower risk of death at 30 days post-transfusion for near sourced plasma. Additional analyses stratified by disease severity, time to treatment, and donor region further supported these findings. The results of this study suggest that near sourced plasma is superior to distantly sourced plasma, which has implications for interpreting the results of clinical studies and designing effective treatment of COVID-19 patients as additional local variant are likely to emerge.

Background

Potential treatments to prevent coronavirus disease 2019 (COVID-19) or to ameliorate disease course have converged on harnessing the immune response to severe acute respiratory syndrome coronavirus 2 (SARS-CoV-2). Despite the successful development of COVID-19 vaccines[1-3] and identification of COVID-19 therapeutics (e.g. convalescent plasma [CP], Remdesivir, monoclonal antibodies, and steroids), there was an unexpected rise in global COVID-19 cases in late 2020 partially attributed to the emergence of several new SARS-CoV-2 variants which were specific to geographic regions[4, 5]. Recent evidence suggests that SARS-CoV-2 exists as quasispecies which evolve locally[6-8]. These small changes occurring locally may translate into immunological differences impacting effectiveness of available treatments, and, in some cases, COVID-19 vaccines have already demonstrated regionally specific effectiveness. For example, the chimpanzee adenovirus-vectored vaccine (ChAdOx1 nCoV-19) demonstrated 74% efficacy in the UK[9] but only 22% efficacy in South Africa [10]. The emergence of SARS-CoV-2 variants is a cause for concern, and vaccine and therapeutic strategies must account for local differences in transmissible SARS-CoV-2 variants.

Regional variants of SARS-CoV-2 were reported in the United States as early as November 2020 but were likely present much earlier [11]. Early research has shown that local variants may impact the effectiveness of CP, such that antibody responses to earlier viral strains are less effective against newer SARS-CoV-2 variants [12]. One of the perplexing findings observed with the use of CP for COVID-19 is that observational studies have generally yielded favorable results whereas randomized controlled trials have been less encouraging [13]. Large controlled clinical trials are more likely to use a central source of CP whereas observational studies likely depend on local infrastructure. The existence of differences in efficacy related to donor location could help to explain the wide variety of results observed in CP studies.

Given that near sourced CP is likely to reflect the antigenic composition of local viral strains, we hypothesized that CP has a higher efficacy when the treated patient and donor are in close geographic proximity. We evaluated this hypothesis in a US registry of 94,287 hospitalized COVID-19 patients who were treated with CP from 313 participating blood banks. This allowed sufficient variability in donor-patient distance to test whether near sourced CP provides a survival benefit when compared to distantly sourced CP in transfused COVID-19 patients.

Methods

We analyzed data from the Expanded Access Program to Convalescent Plasma for COVID-19, which has been described in detail previously [14, 15]. The study was approved by the Mayo Clinic institutional review board (IND 19832 Sponsor: Dr. Michael J. Joyner, MD). Written informed consent was obtained from the patients, from legally authorized representatives of the patients, or by means of an emergency consent process if necessary.

For the current effort, we used a similar approach to our previous analyses which found a dose-response relationship between the antibody levels in CP units and risk of death in COVID-19 patients [15]. Regression models and Cochran-Mantel-Haenszel techniques were used to estimate the adjusted relative risk death within 30 days after transfusion between local and remote donors. Hospitalized patients with COVID-19 between the ages of 18 and 65 years who were transfused with one or two units of CP from a single donor between June 1, 2020 and August 31, 2020 were included in this analysis. Mechanically ventilated patients were excluded because current evidence suggests that CP is not effective in this subpopulation [15]. Given that age is a pronounced risk factor for mortality, patients over age 65 were excluded to further explore the impacts of other potential risk factors[16]. The study period was defined to assess the second wave of enrollment in the EAP cohort and to ensure efficient supply of plasma had been established.

A gradient-boosting machine (GBM) was used to identify important predictors of 30-day mortality which included patient characteristics, indicators of disease severity, treatment methods, and distance between COVID-19 patients and plasma donors. Results of the GBM were used to design a series of unadjusted and adjusted relative risk regression models [17]. We also examined the relative risk of death at 30 days among subgroups of patient risk factors, time to treatment, and donor region for patients receiving near sourced plasma vs. distantly sourced plasma. Near sourced plasma was defined as plasma collected within 150 miles of the receiving patient. This value was selected from the partial dependence plot of the GBM and was considered a reasonable commute time between and within communities. All other plasma was considered remote.

Data were used as reported in the case report forms, and missing data were not imputed. Analyses were performed with the use of R software [18]. Point estimates for crude mortality were calculated using rates, and 95% confidence intervals were estimated using binomial proportions via the Wilson method. Reported P values are two-sided with $\alpha = 0.05$.

Results

Of the 94,287 patients receiving transfusions through EAP, 27,952 met inclusion criteria for the current analyses (Figure S1). Primary demographic and baseline characteristics of COVID-19 patients are reported in Table 1 stratified by geographic proximity of the plasma donation used to treat the COVID-19 patients. Rates of baseline characteristics were similar across distance cohorts except for geographic region and race/ethnicity. Figure 1 represents the movement of CP donations within and between US Census geographic areas [19] with both divisions and regions represented.

The rate of death within 30 days of transfusion for the entire cohort was 9.76% (2,728 of 27,952; 95% confidence interval (CI), 9.42% to 10.11%). Death within 30 days occurred in 8.60% (1,125 of 13,088; 95% CI 8.13% to 9.09%) of the group receiving near sourced CP and in 10.78% (1,603 out of 14,864; 95% CI 10.30% to 11.29%) of the group receiving remote distantly sourced CP ($P < 0.001$). The variable importance plots from the GBM analysis showed that the number of miles between collection and treatment facilities was of high importance in predicting death at 30 days post infusion (Figure 2a). The partial dependence plot for distance displays the predicted probabilities of death within 30 days across the observed distances of plasma transport (Figure 2b). Note that extreme distances were transformed in the GBM to set the upper limit at 2,500 miles (i.e., winsorized).

Patients in the group receiving near sourced CP had a lower relative risk of death within 30 days of transfusion than patients receiving distantly sourced CP (relative risk, 0.80; 95% CI 0.74 to 0.86). Adjusted regression models showed similar results (Table 2). Results of the additional analysis using a stratified-data analytic approach further supported these findings by controlling for disease severity, time to treatment, and donor region (Figure 3). These sub-groupings capture the combination of U.S. Census area and the combined variable of time to treatment and disease severity (early administration with no complications, early administration with some complications, and late administration or with many complications). The pooled relative risk of death within 30 days of transfusion across the subgroups for near sourced vs. distantly sourced CP was 0.73 (95% CI 0.67 to 0.80).

Discussion

In a large sample of COVID-19 patients aged 18 to 65 transfused with CP under the EAP, patients receiving near sourced plasma exhibited lower mortality compared to patients transfused with distantly sourced plasma (8.6 vs. 10.8%). This trend was consistent across all regions of the US and persisted when controlling for other variables (e.g. patient characteristics, disease severity, and treatment

methods). We interpret these observations to suggest that convalescent plasma donated from nearby COVID-19 survivors contained antibodies specific to local variants enabling greater viral neutralization and reduced mortality.

Our results are consistent with the biology of SARS-CoV-2 and the immunology of COVID-19. SARS-CoV-2 is an RNA virus that generates new variants through error-prone replication of its genome and thus exists as a constantly changing quasispecies[9]. Over the past year, error-prone replication has led to the emergence of numerous major variants, some of which are much less susceptible to neutralization by antibodies elicited by earlier circulating strains[9]. These variants tend to attract attention when they replace the prior prevalent viral types through increased transmission, mortality and/or when they defeat vaccine immunity and antibody-based therapies through antigenic changes [20, 21]. However, these major known variants are the proverbial ‘tip of the iceberg’ for the genomic and antigenic diversity that exists for SARS-CoV-2. For example, even with the Washington DC USA capital region different cities have different proportions of SARS-Cov-2 clades, implying tremendous regional diversity[22]. Hence, different communities can be expected to harbor distinct quasispecies of SARS-Cov-2 that while insufficient to come to medical attention by virtue of not having acquired obvious new properties, in aggregate they could elicit different antibody responses that translate into CP with variable antiviral capacity. In addition, these SARS-CoV-2 variants could have differential mortality rates which may explain the high importance of region observed in the GBM. Stresses on local healthcare infrastructure and quality and availability of care during the waves of infection would also impact regional mortality rates. Regions of treatment and donor proximity are likely coupled due to convalescent plasma availability and distribution.

Our finding that near sourced CP was associated with lower mortality than far sourced CP implies that small differences in the human immune response to local variants can translate to a major effect on therapeutic outcomes. This can be particularly important for CP where the active agent consists of polyclonal antibodies representing a complex mix of immunoglobulins that bind to many epitopes in viral proteins. This observation has far-reaching consequences. First, it provides indirect immunological evidence for the notion that medically important variants were present in many US communities as early as the spring and summer of 2020. Second, it implies the superiority of locally sourced CP for the therapy of COVID-19. Third, it suggests a biological explanation for the differences in efficacy between studies that used locally sourced CP versus those that relied on central repositories. Fourth, as CP continues to be used, these observations support a need to divert locally produced CP for local needs

and to increase collection in geographic areas with poor or no CP collection capacity. Fifth, it implies that securing maximal efficacy from CP will require better matching of its antibody specificities and the local SARS-CoV-2 strains, which would require more detailed characterization than simply measuring total and neutralizing titer.

This study is limited by the data available in the EAP and the completeness of data collected by participating sites. We determined a priori that patient receiving distantly source CP may have been at higher risk for death than patients receiving near sourced plasma. Additionally, the associations observed in the presented analyses do not correct for regional variations in socioeconomic status or other indicators of healthcare quality as it was not collected within the EAP database. Lastly, the open-label design and lack of a randomized placebo or other control group in the EAP limit the interpretability of these results.

References

1. Chagla, Z., *The BNT162b2 (BioNTech/Pfizer) vaccine had 95% efficacy against COVID-19 ≥ 7 days after the 2nd dose.* Ann Intern Med, 2021. **174**(2): p. JC15.
2. Chagla, Z., *In high-risk adults, the Moderna vaccine had 94% efficacy against COVID-19 ≥ 14 d after the 2nd dose.* Ann Intern Med, 2021. **174**(3): p. JC28.
3. Sadoff, J., et al., *Interim Results of a Phase 1-2a Trial of Ad26.COV2.S Covid-19 Vaccine.* N Engl J Med, 2021.
4. Chen, J., et al., *Mutations Strengthened SARS-CoV-2 Infectivity.* J Mol Biol, 2020. **432**(19): p. 5212-5226.
5. Wang, R., et al., *Analysis of SARS-CoV-2 mutations in the United States suggests presence of four substrains and novel variants.* Commun Biol, 2021. **4**(1): p. 228.
6. Karamitros, T., et al., *SARS-CoV-2 exhibits intra-host genomic plasticity and low-frequency polymorphic quasispecies.* J Clin Virol, 2020. **131**: p. 104585.
7. Rueca, M., et al., *Compartmentalized Replication of SARS-Cov-2 in Upper vs. Lower Respiratory Tract Assessed by Whole Genome Quasispecies Analysis.* Microorganisms, 2020. **8**(9).
8. Rochman, N.D., et al., *Ongoing Global and Regional Adaptive Evolution of SARS-CoV-2.* bioRxiv, 2021.
9. Chagla, Z., *In adults, the Oxford/AstraZeneca vaccine had 70% efficacy against COVID-19 > 14 d after the 2nd dose.* Ann Intern Med, 2021. **174**(3): p. JC29.
10. Cohen, J., *South Africa suspends use of AstraZeneca's COVID-19 vaccine after it fails to clearly stop virus variant,* in Science 2021: <https://doi.org/10.1126/science.abg9559>.
11. Peng, J., et al., *Estimation of secondary household attack rates for emergent SARS-CoV-2 variants detected by genomic surveillance at a community-based testing site in San Francisco.* medRxiv, 2021: p. 2021.03.01.21252705.
12. Chen, R.E., et al., *Resistance of SARS-CoV-2 variants to neutralization by monoclonal and serum-derived polyclonal antibodies.* Nature Medicine, 2021.
13. Stephen A. Klassen, J.W.S., Patrick W. Johnson, Rickey E. Carter, Chad C. Wiggins, Shmuel Shoham, Brenda J. Grossman, Jeffrey P. Henderson, James Musser, Eric Salazar, William R. Hartman, Nicole M. Bouvier, Sean T. H. Liu, Liise-anne Pirofski, Sarah E. Baker, Noud van Helmond, R. Scott Wright, DeLisa Fairweather, Katelyn A. Bruno, Zhen Wang, Nigel S. Paneth, Arturo Casadevall, and Michael J. Joyner, *The Effect of Convalescent Plasma Therapy on COVID-19 Patient Mortality: Systematic Review and Meta-analysis.* Mayo Clinic Proceedings, 2021.
14. Joyner, M.J., et al., *Safety Update: COVID-19 Convalescent Plasma in 20,000 Hospitalized Patients.* Mayo Clin Proc, 2020. **95**(9): p. 1888-1897.
15. Joyner, M.J., et al., *Convalescent Plasma Antibody Levels and the Risk of Death from Covid-19.* N Engl J Med, 2021.
16. Yoon, H.A., et al., *Treatment of severe COVID-19 with convalescent plasma in Bronx, NYC.* JCI Insight, 2021. **6**(4).
17. Carter, R.E., S.R. Lipsitz, and B.C. Tilley, *Quasi-likelihood estimation for relative risk regression models.* Biostatistics, 2005. **6**(1): p. 39-44.
18. R Development Core Team, *R: A language and environment for statistical computing.* R Foundation for Statistical Computing. 2020, R Foundation for Statistical Computing: Vienna, Austria.
19. United States. Bureau of the Census., *Geographic areas reference manual.* 1994, Washington, D.C.: U.S. Dept. of Commerce, Economics and Statistics Administration, Bureau of the Census.
20. Challen, R., et al., *Risk of mortality in patients infected with SARS-CoV-2 variant of concern 202012/1: matched cohort study.* BMJ, 2021. **372**: p. n579.

21. Wang, P., et al., *Antibody Resistance of SARS-CoV-2 Variants B.1.351 and B.1.1.7*. Nature, 2021.
22. Thielen, P.M., et al., *Genomic Diversity of SARS-CoV-2 During Early Introduction into the United States National Capital Region*. medRxiv, 2020.

Table 1. Characteristics of Patients with Covid-19 who Received Convalescent Plasma, According to Donor Location

	Patients Receiving Near Sourced Plasma (N=13,088)	Patients Receiving Distantly Sourced Plasma (N=14,864)	All Patients (N=27,952)
Age category at enrollment			
18-39 years	2,327/13,088 (17.8)	2,466/14,864 (16.6)	4,793/27,952 (17.1)
40-50 years	3,015/13,088 (23.0)	3,504/14,864 (23.6)	6,519/27,952 (23.3)
50-60 years	4,828/13,088 (36.9)	5,604/14,864 (37.7)	10,432/27,952 (37.3)
60-65 years	2,918/13,088 (22.3)	3,290/14,864 (22.1)	6,208/27,952 (22.2)
Sex			
Women	5,470/13,088 (41.8)	6,146/14,864 (41.3)	11,616/27,952 (41.6)
Men	7,559/13,088 (57.8)	8,650/14,864 (58.2)	16,209/27,952 (58.0)
Other	59/13,088 (0.5)	68/14,864 (0.5)	127/27,952 (0.5)
Weight Status^a			
Underweight or Normal Weight	1,226/13,085 (9.4)	1,320/14,841 (8.9)	2,546/27,926 (9.1)
Overweight	3,029/13,085 (23.1)	3,424/14,841 (23.1)	6,453/27,926 (23.1)
Class 1 Obesity	3,366/13,085 (25.7)	3,938/14,841 (26.5)	7,304/27,926 (26.2)
Class 2 Obesity	2,296/13,085 (17.5)	2,595/14,841 (17.5)	4,891/27,926 (17.5)
Class 3 Obesity	3,168/13,085 (24.2)	3,564/14,841 (24.0)	6,732/27,926 (24.1)
Race^b			
White	6,300/13,088 (48.1)	7,393/14,864 (49.7)	13,693/27,952 (49.0)
Black	2,282/13,088 (17.4)	3,347/14,864 (22.5)	5,629/27,952 (20.1)
Other race	4,506/13,088 (34.4)	4,124/14,864 (27.7)	8,630/27,952 (30.9)
Ethnicity			
Hispanic/Latino	5,598/13,088 (42.8)	6,727/14,864 (45.3)	12,325/27,952 (44.1)
Not Hispanic/Latino	7,490/13,088 (57.2)	8,137/14,864 (54.7)	15,627/27,952 (55.9)
US Census Region			
Midwest	1,809/13,052 (13.9)	1,056/14,847 (7.1)	2,865/27,899 (10.3)
Northeast	566/13,052 (4.3)	108/14,847 (0.7)	674/27,899 (2.4)
South	7,132/13,052 (54.6)	11,234/14,847 (75.7)	18,366/27,899 (65.8)
West	3,545/13,052 (27.2)	2,449/14,847 (16.5)	5,994/27,899 (21.5)
ICU care before infusion			
Severe/life-threatening COVID-19	3,590/13,088 (27.4)	3,783/14,864 (25.5)	7,373/27,952 (26.4)
Time to infusion category			
<= 3 days	7,048/13,088 (53.9)	8,144/14,864 (54.8)	15,192/27,952 (54.4)
4+ days	6,545/13,088 (50.0)	6,888/14,864 (46.3)	13,433/27,952 (48.1)
6,543/13,088 (50.0)	7,976/14,864 (53.7)	14,519/27,952 (51.9)	
Treatment month			
June	3,215/13,088 (24.6)	3,046/14,864 (20.5)	6,261/27,952 (22.4)
July	5,532/13,088 (42.3)	7,827/14,864 (52.7)	13,359/27,952 (47.8)
August	4,341/13,088 (33.2)	3,991/14,864 (26.9)	8,332/27,952 (29.8)
Risk factors for severe Covid-19 in subgroup of patients with severe or life-threatening Covid-19			
Respiratory failure	3,124/7,048 (44.3)	4,107/8,144 (50.4)	7,231/15,192 (47.6)

Table 1. Characteristics of Patients with Covid-19 who Received Convalescent Plasma, According to Donor Location

	Patients Receiving Near Sourced Plasma (N=13,088)	Patients Receiving Distantly Sourced Plasma (N=14,864)	All Patients (N=27,952)
Dyspnea	6,101/7,048 (86.6)	6,812/8,144 (83.6)	12,913/15,192 (85.0)
Blood oxygen saturation ≤ 93%	5,883/7,048 (83.5)	6,457/8,144 (79.3)	12,340/15,192 (81.2)
Lung infiltrates > 50% (24 to 48 hours)	2,455/7,048 (34.8)	2,619/8,144 (32.2)	5,074/15,192 (33.4)
Respiratory frequency ≥ 30/min	2,800/7,048 (39.7)	2,975/8,144 (36.5)	5,775/15,192 (38.0)
PaO ₂ :FiO ₂ ratio < 300 ^c	1,290/7,048 (18.3)	1,373/8,144 (16.9)	2,663/15,192 (17.5)
Multiple organ dysfunction or failure	185/7,048 (2.6)	242/8,144 (3.0)	427/15,192 (2.8)
Septic shock	93/7,048 (1.3)	118/8,144 (1.4)	211/15,192 (1.4)
Medications during hospital stay			
ARB ^d	230/4,386 (5.2)	324/4,910 (6.6)	554/9,296 (6.0)
ACE inhibitors ^e	359/4,386 (8.2)	386/4,910 (7.9)	745/9,296 (8.0)
Azithromycin	2,027/4,386 (46.2)	2,553/4,910 (52.0)	4,580/9,296 (49.3)
Remdesivir	2,355/4,386 (53.7)	2,472/4,910 (50.3)	4,827/9,296 (51.9)
Steroids	3,043/4,386 (69.4)	3,934/4,910 (80.1)	6,977/9,296 (75.1)
(Hydroxy)chloroquine	94/4,386 (2.1)	126/4,910 (2.6)	220/9,296 (2.4)

All values are represented as number/total number (percent).

^aWeight Status based on BMI. Underweight or Normal Weight: Below 25; Overweight: 25 - 29; Class 1 Obesity: 30 - 34; Class 2 Obesity: 35 - 39; Class 3 Obesity: 40+

^bIn the "Other race" category, 463 patients were American Indian/Alaska Native, 223 were Native Hawaiian/Other Pacific Islander, 107 were multiracial, and 7,108 were reported as other or unknown.

^cPaO₂:FiO₂ = Ratio of partial pressure of arterial oxygen to fraction of inspired oxygen

^dARB = Angiotensin II receptor blockers

^eACE = Angiotensin-converting-enzyme

Table 2. Models of the Association between Donor Proximity and the Risk of Death

	Estimated Relative Risk (95% CI)	P value
Base Model (n = 27,952)		
Donor Distance (Local)	0.80 (0.74, 0.86)	<0.001
Model 2 (n = 27,899)		
Age	1.06 (1.05, 1.06)	<0.001
ICU prior to infusion (Yes)	2.09 (1.94, 2.25)	<0.001
Respiratory failure (Yes)	1.69 (1.57, 1.82)	<0.001
Region (Northeast)	1.47 (1.10, 1.98)	0.010
Region (South)	1.88 (1.61, 2.18)	<0.001
Region (West)	2.06 (1.75, 2.43)	<0.001
Gender (Men)	1.21 (1.13, 1.30)	<0.001
Gender (Other)	1.28 (0.78, 2.09)	0.32
Time to transfusion (days)	1.01 (1.00, 1.02)	0.006
Donor Distance (Local)	0.83 (0.78, 0.90)	<0.001
Model 3 (n = 9,279)		
Age	1.06 (1.05, 1.07)	<0.001
ICU prior to infusion (Yes)	2.05 (1.80, 2.33)	<0.001
Region (Northeast)	1.83 (1.14, 2.93)	0.012
Region (South)	1.81 (1.36, 2.41)	<0.001
Region (West)	2.19 (1.63, 2.95)	<0.001
Weight Status (Overweight)	0.73 (0.59, 0.91)	0.005
Weight Status (Class 1 Obesity)	0.85 (0.69, 1.05)	0.14
Weight Status (Class 2 Obesity)	0.89 (0.71, 1.12)	0.32
Weight Status (Class 3 Obesity)	1.13 (0.91, 1.40)	0.25
Gender (Men)	1.11 (0.98, 1.26)	0.11
Gender (Other)	0.99 (0.38, 2.58)	0.99
Lung infiltrates or low PAO ₂ :FIO ₂ (Yes)	1.42 (1.24, 1.62)	<0.001
Remdesivir (Yes)	0.81 (0.72, 0.92)	<0.001
Steroids (Yes)	1.46 (1.23, 1.72)	<0.001
Time to transfusion (days)	1.01 (0.99, 1.02)	0.25
Donor Distance (Local)	0.77 (0.68, 0.87)	<0.001

Note that the sample size for Model 3 is noticeably smaller as fewer patients had medications reported during the study time window.

Figure 1. Sankey Diagram of Movement of Convalescent Plasma Donations between Regions. Flow of plasma donations from the location of their collection to the location treatment is depicted by lines connecting divisions. The width of each line is proportional to number of patients treated. The color of each line represents the US Census region from which the plasma was donated. Note that low rates of transfusions in the Middle Atlantic and New England divisions, which make up the Eastern region, are due to a combination of the analysis time window and the exclusion of mechanically ventilated patients.

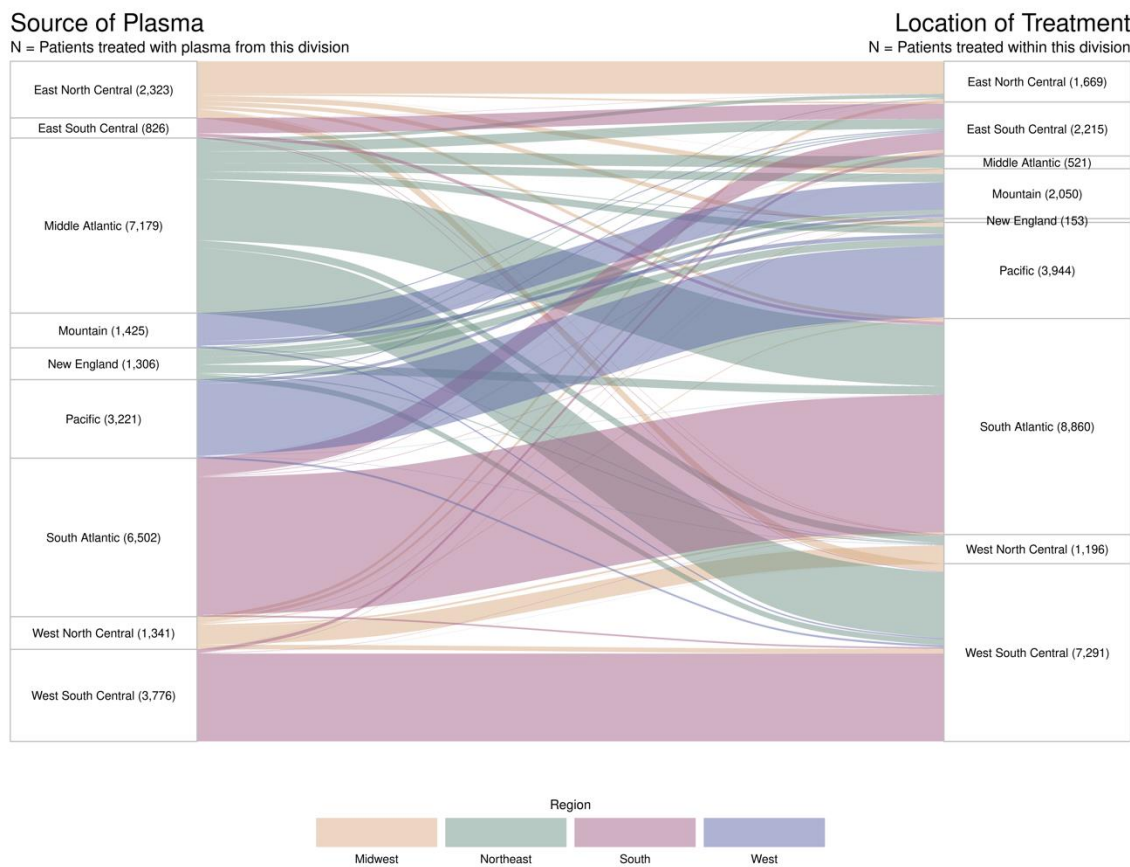


Figure 2. The Variable Importance Plot (A) and the Partial Dependence Plot (B) from the Gradient-Boosting Machine. The variable importance plot shows the relative importance of each variable in predicting 30-day mortality. All variables included in the gradient-boosting machine are shown below. The partial dependence plot shows the estimated probability of death across donor-patient distances when accounting for the average effect of all other predictors in the model. Distance was winsorized in Figure 2b at 2500 miles.

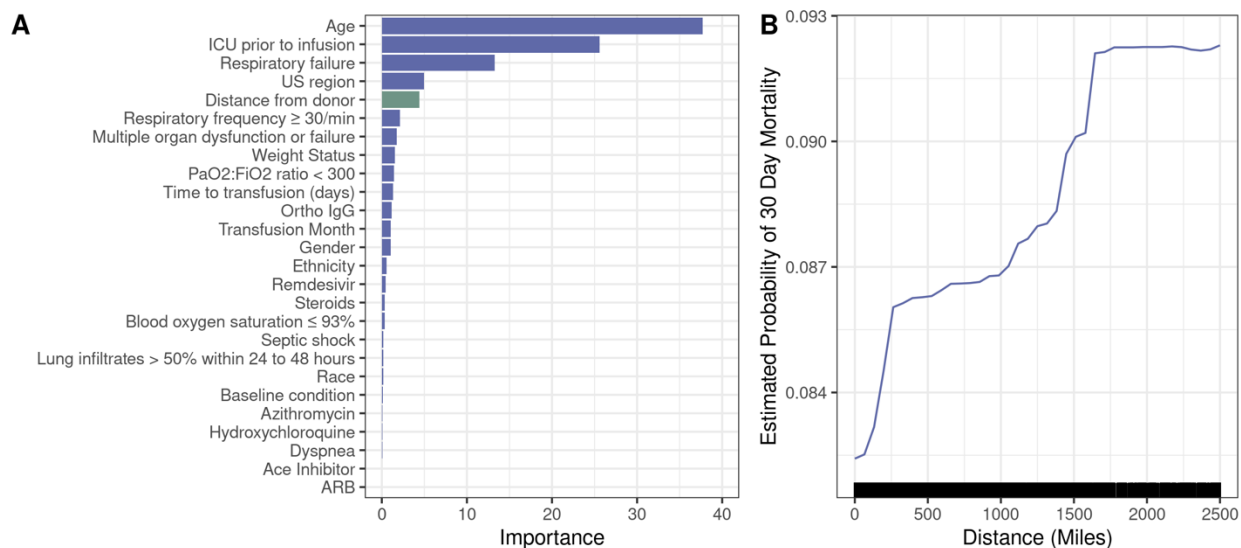
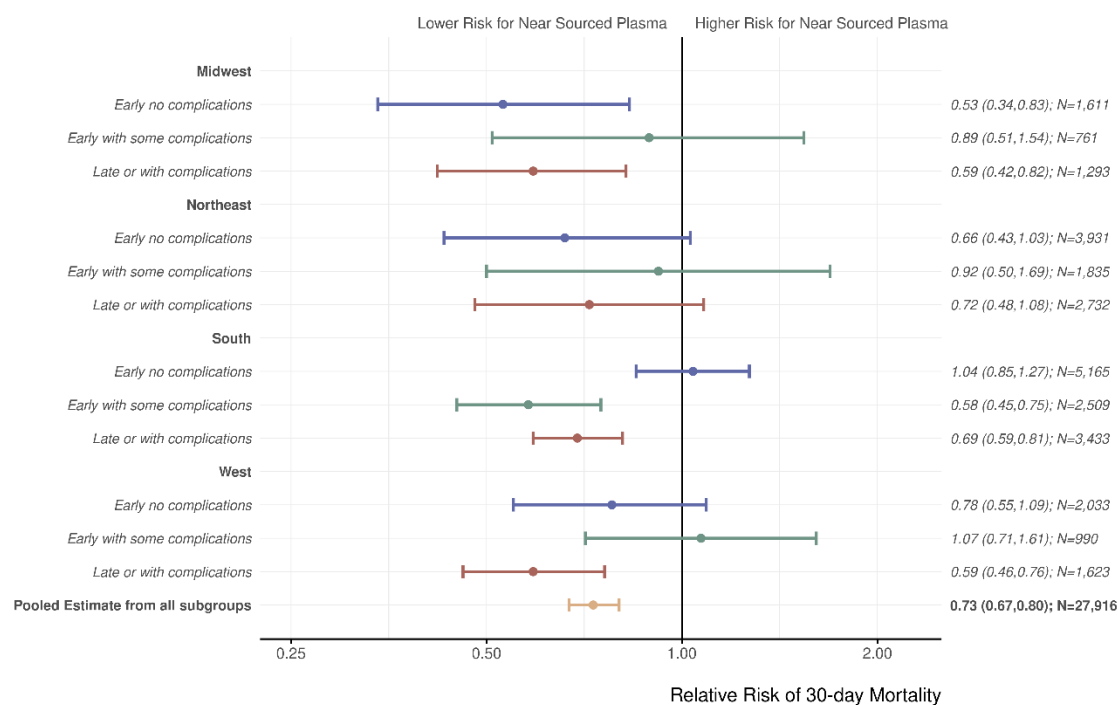


Figure 3. Relative Risk of Death within 30 Days after Receiving Convalescent Plasma Transfusion from Local vs. Remote Donor. This forest plot shows the relative risk of death associated with receiving local convalescent plasma vs. remote (≤ 150 miles vs. >150 miles). The subgroups are the 12 mutually exclusive categories of donor region and patient disease severity. The pooled estimate captures the combined effect across subgroups. Patient disease severity was defined as follows: Early Treatment = either days to transfusion ≤ 3 or symptom onset to infusion was < 7 days, No Complications = no observed risk factors for severe COVID-19 (e.g., respiratory failure; See Table 1), Some Complications = 1-2 severe risk factors, With Complications = 3+ severe risk factors.



Supplemental Data

Supplemental Figure 1. Transfusions in the Expanded Access Program (EAP) for Convalescent Plasma over the Entire EAP Duration and for the Data Used in Current Study. The purple bars represent daily transfusions of new patients during the study period, and grey bars are transfusions that occurred beforehand. The overlaid trend line represents a 7-day rolling average. The funnel diagram depicts the cohort selection criteria that resulted in the inclusion of 27,952 patients.

