

# 1 The effect of COVID-19 vaccination in Italy and perspectives for 2 “living with the virus”

3 Valentina Marziano <sup>1,2,#</sup>, Giorgio Guzzetta <sup>1,2,#</sup>, Alessia Mammone <sup>3</sup>, Flavia Riccardo <sup>4</sup>, Piero Poletti <sup>1,2</sup>,  
4 Filippo Trentini <sup>1,2</sup>, Mattia Manica <sup>1,2</sup>, Andrea Siddu <sup>3</sup>, Antonino Bella <sup>4</sup>, Paola Stefanelli <sup>4</sup>, Patrizio  
5 Pezzotti <sup>4</sup>, Marco Ajelli <sup>5,6,^</sup>, Silvio Brusaferrero <sup>4,^</sup>, Giovanni Rezza <sup>3,^</sup>, Stefano Merler <sup>1,2,^,\*</sup>

## 6 Affiliations:

7 1 Center for Health Emergencies, Bruno Kessler Foundation, Trento, Italy

8 2 Epilab-JRU, FEM-FBK Joint Research Unit, Trento, Italy

9 3 Health Prevention, Ministry of Health, Rome, Italy

10 4 Istituto Superiore di Sanità, Rome, Italy

11 5 Laboratory for Computational Epidemiology and Public Health, Indiana University School of Public  
12 Health, Bloomington, United States

13 6 Laboratory for the Modeling of Biological and Socio-technical Systems, Northeastern University,  
14 Boston, United States

15 # joint first authors

16 ^ joint senior authors

17 \* corresponding author: Stefano Merler, merler@fbk.eu

## 18 Abstract

19 Vaccination campaigns against COVID-19 are allowing the progressive release of physical distancing  
20 restrictions in many countries. However, the global spread of the highly transmissible Delta variant  
21 has likely suppressed the residual chances of SARS-CoV-2 elimination through herd immunity alone.  
22 Here we assess the impact of the vaccination program in Italy since its start on December 27, 2020  
23 and evaluate possible prospects for reopening the society while at the same time keeping COVID-19  
24 under control. To this aim, we propose a mathematical modeling framework where levels of social  
25 activity are adjusted to match the time-series of the net reproduction number as estimated from  
26 surveillance data. We compared the estimated level of social contacts, number of deaths, and  
27 transmission potential with those of a counterfactual scenario where the same epidemic trajectory is  
28 obtained in absence of vaccination. We then evaluate the prospective impact of different scenarios of  
29 vaccination coverage and different social activity levels on SARS-CoV-2 reproduction number. We  
30 estimate that by June 30, 2021, the COVID-19 vaccination program allowed the resumption of about  
31 half the social contacts that were recorded in pre-pandemic times; in absence of vaccination, only  
32 about one third could have been resumed to obtain the same number of cases, with the added cost  
33 of about 12,100 (95%CI: 6,600-21,000) extra deaths (+27%; 95%CI: 15-47%) between December 27,  
34 2020 and June 30, 2021. We show that the negative effect of the Delta variant diffusion in July was  
35 entirely offset by vaccination in the month of July and August 2021. Finally, we estimate that a  
36 complete return to the pre-pandemic life could be safely attained only if >90%, including children  
37 from 5 years on, will be vaccinated using mRNA vaccines developed in 2020. In any case, increasing  
38 the vaccination coverage will allow further margins for societal reopening even in absence of a  
39 pediatric vaccine. These results may support the definition of vaccination targets for countries that  
40 have already achieved a broad population coverage.

**NOTE: This preprint reports new research that has not been certified by peer review and should not be used to guide clinical practice.**

## 41 Introduction

42 Since December 2020, vaccination against COVID-19 is being rolled out in all countries of the world, in  
43 a race to put an end to the devastating effects of the pandemic in terms of lives lost [1], hospital  
44 congestion [2], economic disruption [3], and mental health [4]. While African countries are painfully  
45 struggling to have access to vaccines and to distribute them (only 4.5% of the population in Africa is  
46 fully vaccinated, as of October 1, 2021 [5]), most high-income countries had a fast deployment, with  
47 over half of their citizens being fully immunized by July 2021 [5]. Thanks to the high efficacy and  
48 effectiveness of the licensed vaccines against SARS-CoV-2 infection, severe disease, and death [6-10],  
49 and to the prioritization of the highest risk categories, these countries were able to limit the damages  
50 caused by the emergence of the hypertransmissible Delta variant [11-13]. In the European Union, for  
51 example, despite ample relaxations of physical distancing restrictions conceded by governments over  
52 the summer of 2021, the peak mortality never exceeded 1.5 deaths per million since Delta become  
53 dominant in July, as compared to values over three times higher from November 2020 through April  
54 2021 [5]. Similarly, the incidence of confirmed cases remained within about 150 cases per million, a  
55 value that is lower than those systematically observed between mid-October 2020 and mid-May 2021  
56 [5]. With the ongoing progress of immunization campaigns, there is a need to quantitatively assess  
57 their impact on health and social activities, as well as to evaluate potential future epidemiological  
58 scenarios. In particular, as the emergence of the Delta variant has severely dwindled chances to  
59 eliminate SARS-CoV-2 [14] in countries that have not managed to maintain a zero-COVID approach  
60 [15], there is a need to identify strategic objectives towards “living with COVID-19” [16] at least in the  
61 medium term.

62 In this study, we use a mathematical model of SARS-CoV-2 transmission, informed by detailed real-  
63 world data, to retrospectively evaluate the effect of COVID-19 vaccination in Italy during the first half  
64 of 2021, and to prospectively assess potential future scenarios associated to different coverage levels.

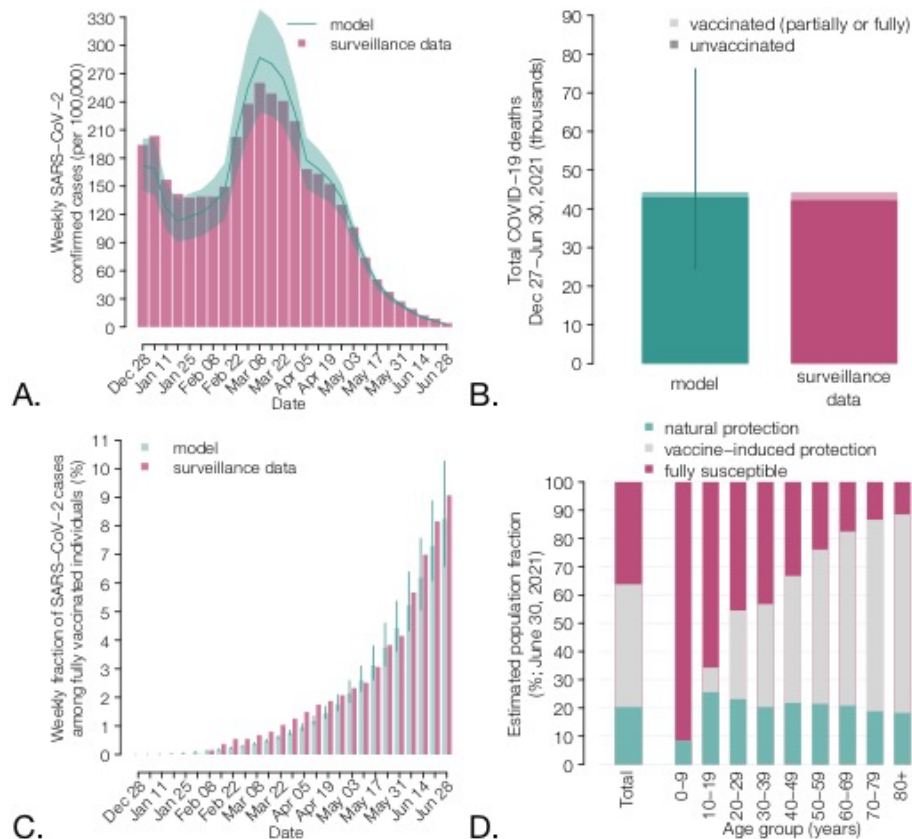
65

## 66 Results

67 We adapted an age-structured, compartmental model of SARS-CoV-2 transmission in Italy [17,18] that  
68 estimates the level of social activity needed to match the net reproduction number, as computed  
69 from official epidemic curves recorded in the national integrated surveillance system [10,19]. The  
70 level of social activity is expressed in terms of the proportion of social contacts measured before the  
71 pandemic [20]. The model keeps into account the dynamics of age-specific population immunity due  
72 to both infection [17], the progression of the vaccination campaign [21], and waning of immunity. We  
73 assume that protection from both natural and vaccine-induced immune response wanes  
74 exponentially with a baseline average duration of 2 years [22, 23]. We assume that successfully  
75 vaccinated individuals are not fully immune (“leaky vaccine”) with different efficacy values for  
76 preventing infection and lethal disease. We tuned the model with data from the initial phase of the  
77 vaccination campaign (December 27 - June 30, 2021), when the SARS-CoV-2 Alpha variant was  
78 dominant in the country [24], and we project model results for the future by considering the  
79 progression of the vaccination campaign and the dominance of the Delta variant as of October 2021  
80 [25,26]. Further details on the model are provided in Section Methods.

81 **Retrospective analysis.** The model reproduces the observed number of COVID-19 cases and deaths in  
82 vaccinated (partially or fully) and unvaccinated individuals over the first half of 2021 (Figure 1A-C).

83 Considering the population immunity acquired from both vaccination and infection, a significant  
 84 fraction of the Italian population (36.2%, 95% CI: 35.9-36.7%) was estimated to be fully susceptible to  
 85 SARS-CoV-2 as of June 30, 2021, with high heterogeneity by age (Figure 1D). This population immunity  
 86 profile would have been insufficient to avoid potential successive outbreaks if caution was not applied  
 87 when lifting physical distancing restrictions; for example, a complete resumption of pre-pandemic  
 88 social activity would result in an effective reproduction number of 1.9 (95% CI: 1.8-2.1) on June 30,  
 89 2021, even in absence of the more transmissible Delta variant.  
 90



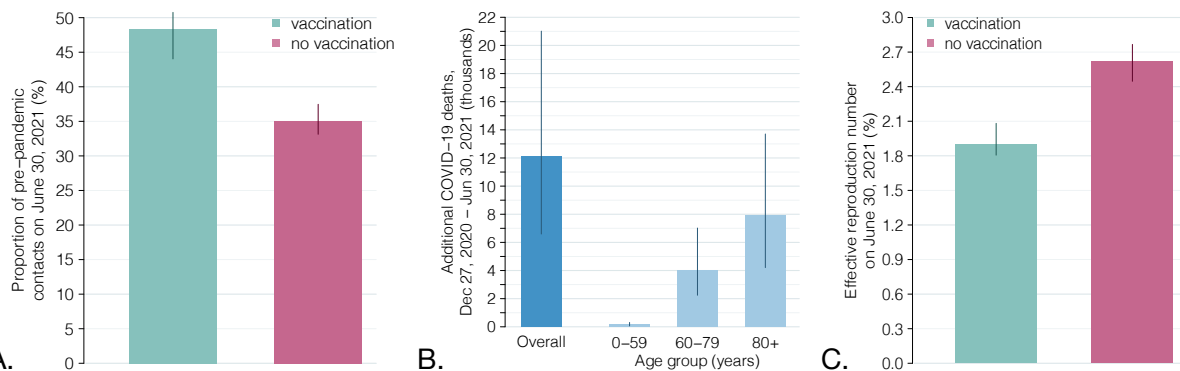
91 **Figure 1. Characteristics of the COVID-19 epidemic in Italy during the first half of 2021.** A) Weekly incidence per  
 92 100,000 population of COVID-19 confirmed cases (the x axis reports the starting day of the considered week);  
 93 gray bars: data from the Italian Integrated Surveillance System [27]; green lines: mean of the model estimates;  
 94 green shaded area: 95% CI. B) Total number of COVID-19 deaths over the study period (in thousands) among  
 95 vaccinated (partially or fully) and unvaccinated individuals; green: model; red: data from the Italian Integrated  
 96 Surveillance System [28]. C) Weekly percentage of confirmed COVID-19 cases occurring in fully vaccinated  
 97 individuals over the total. The fraction of cases in completely vaccinated individuals increases over time because  
 98 of the progressive increase in the vaccinated population. Bars: mean model estimate and observed data; vertical  
 99 lines: 95% CI. D) Estimated immunity profile of the Italian population, overall and by age groups, on June 30,  
 100 2021. Individuals who have been infected after being vaccinated or who have been vaccinated despite still  
 101 having a protection from infection are counted under the natural protection bar; individuals who have never  
 102 been infected or who have lost their natural protection and were vaccinated (partially or fully) are included  
 103 under the vaccine-induced protection bar; individuals who were never vaccinated nor infected, or who were  
 104 infected but lost their natural protection, or who were vaccinated but lost their vaccine-induced protection are  
 105 included under the fully susceptible bar.  
 106

107 To evaluate the impact of the COVID-19 vaccination program in Italy over the first half of 2021, we  
 108 simulated a scenario where we assume that the actual epidemic trajectory would be maintained, in

109 absence of vaccination, by an appropriate reduction in social activity over time, due to both  
 110 governmental measures and individual behavioral choices. Under these hypotheses, a decrease of  
 111 about one fourth – from 48% (95% CI: 44-51%) to 35% (95% CI: 33-37%) – of the average proportion  
 112 of active social contacts at the end of June 2021 would have been needed (Figure 2A). Furthermore,  
 113 we estimate that about 12,100 additional deaths (95% CI: 6,600-21,000, corresponding to an increase  
 114 of 27%, 95% CI: 15-47%), would have occurred in the population even under the same cumulative  
 115 number of cases (Figure 2B), mostly because of a larger proportion of infections among the high-risk  
 116 segments of the population. Finally, we estimate that the potential for successive waves would be  
 117 much larger due to the lower population immunity under this scenario, with an estimated effective  
 118 reproduction number of 2.6 (95% CI: 2.4-2.8) (Figure 2C).

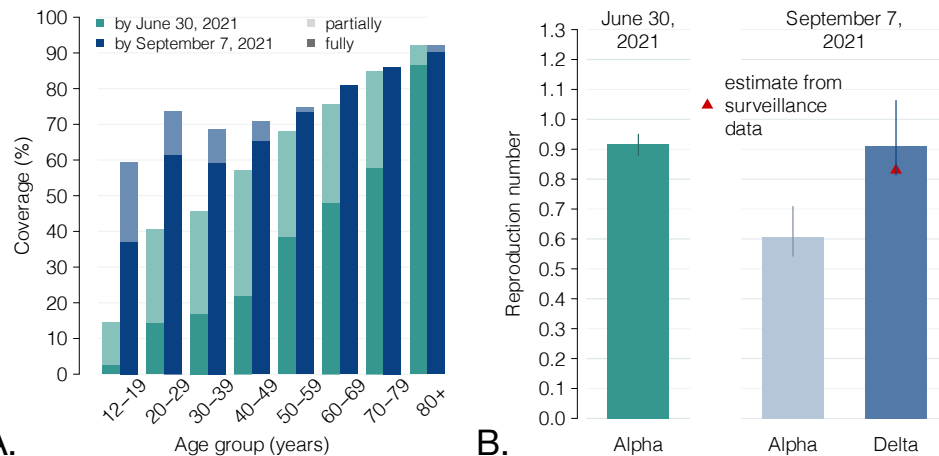
119 If the Alpha variant had remained dominant until September 2020, we estimated that the progress of  
 120 the vaccination campaign in July and August 2021 (Figure 3A) would have resulted in a decline of the  
 121 reproduction number from 0.92 (95% CI: 0.88-0.95) on June 30 to 0.61 (95% CI: 0.54-0.71) on  
 122 September 7, 2021 (Figure 3B). However, the Delta variant had rapidly replaced Alpha in July 2021  
 123 [25]. Considering a 50% increase in transmissibility of the Delta variant [11-13], the estimated  
 124 reproduction number on September 7, 2021, is 0.91 (95% CI: 0.81-1.06), close to the observed value  
 125 of 0.83 (95% CI: 0.82-0.84) [29]. Thus, the increased transmissibility of the new variant and the  
 126 progress of the vaccination campaign in the summer of 2021 have essentially leveled out, resulting in  
 127 similar values of the reproduction number at the end of June and beginning of September, 2021.

128



129

130 **Figure 2. Impact of the vaccination program during the first half of 2021.** A) Estimated active social contacts on  
 131 June 30, 2021, as a proportion of pre-pandemic contacts, with and without a vaccination program, under the  
 132 constraint that the two scenarios reproduce the same observed epidemic trajectory. B) Estimated additional  
 133 COVID-19 deaths between December 27, 2020 and June 30, 2021, total and by age group, under a no-  
 134 vaccination scenario. C) Effective reproduction number (i.e., under complete resumption of pre-pandemic  
 135 contacts) on June 30, 2021, with and without vaccination. Bars: mean estimates; vertical lines: 95% CI.



136

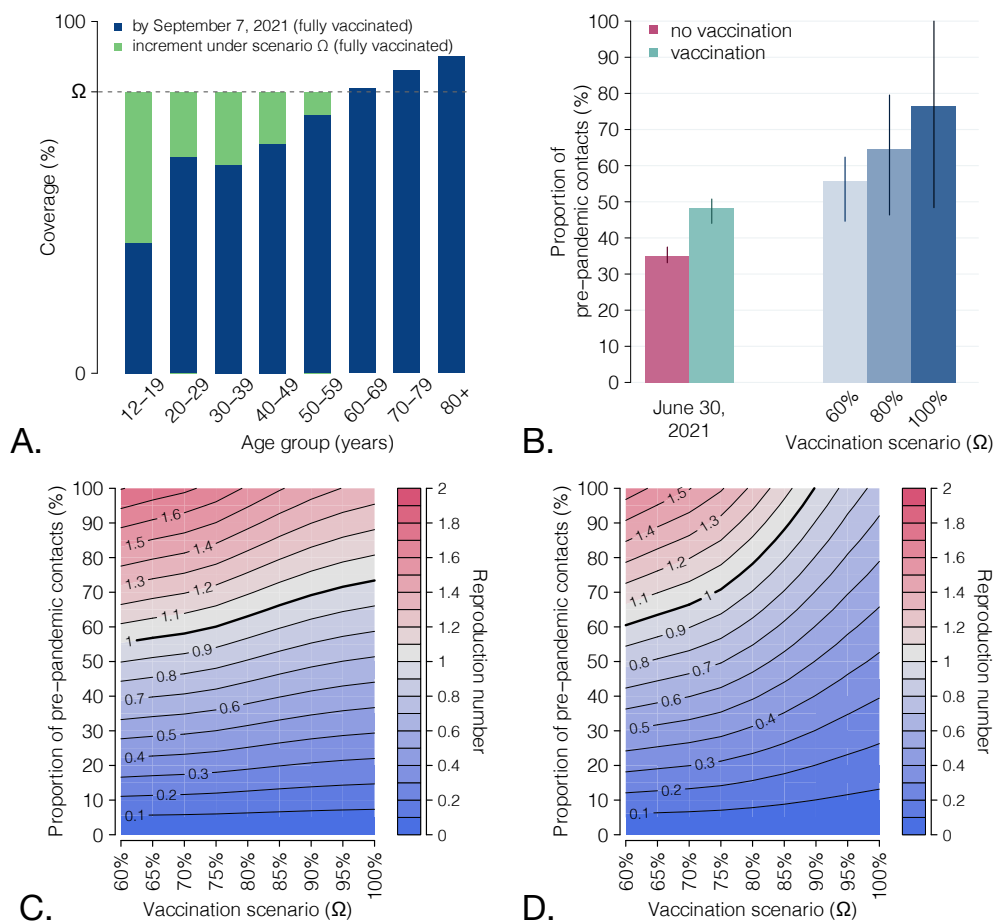
A.

B.

137 **Figure 3. Vaccination coverage by June 30 and September 7, 2021, and effect of the replacement of the Alpha**  
 138 **variant by the Delta variant.** A) Comparison between the fraction of the Italian population that was partially and  
 139 fully vaccinated by June 30, 2021, and by September 7, 2021, by age group. B) Green: net reproduction number  
 140 estimated on June 30, 2021, when the Alpha variant was still largely dominant. Light blue: mean estimated value  
 141 of the reproduction number, given the progression of the vaccination program until September 7 and under the  
 142 assumption that the Alpha variant remained dominant. Dark blue: the same effect under the assumption of a  
 143 50% increase in transmissibility to reproduce the replacement of the Alpha variant with the Delta, occurred  
 144 during the summer of 2021 [11-13, 25]. Vertical lines: 95% CI. Red triangle: value of the reproduction number as  
 145 estimated from surveillance data [29]; for this estimate, the 95% CI is not visible at the scale of the plot.

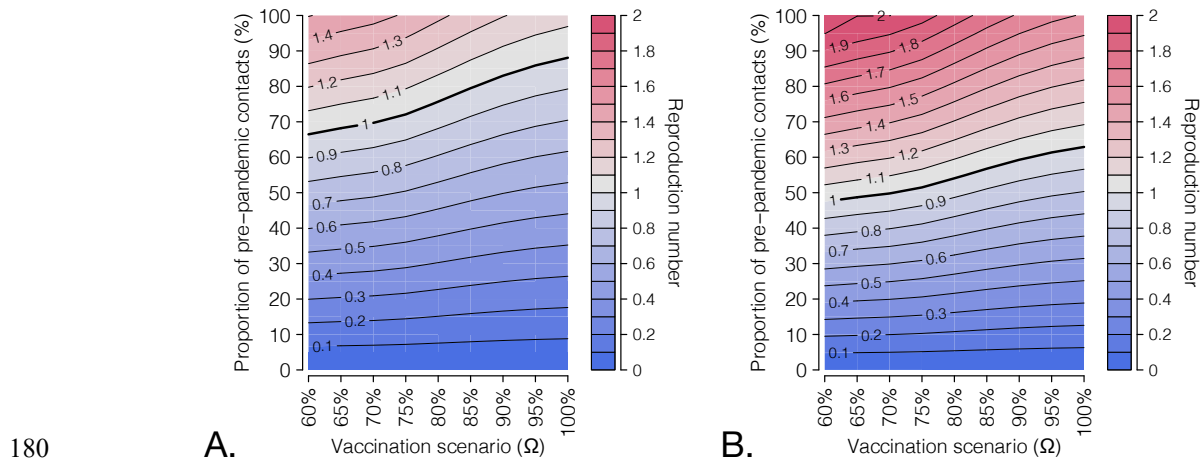
146 **Future vaccination scenarios.** We projected the potential impact of a further future progression of the  
 147 vaccination campaign. To this aim, we evaluated scenarios in which all age groups will reach a given  
 148 coverage  $\Omega$ ; age groups which were already above that coverage on September 7, 2021, will remain  
 149 unaffected (see the schematic example on Figure 4A). We then projected the reproduction number  
 150 for different values of  $\Omega$  and different proportions of pre-pandemic contacts that are resumed (Figure  
 151 4C). A complete return to the pre-pandemic lifestyle would still result in reproduction numbers  
 152 significantly higher than the epidemic threshold of 1 and is therefore unlikely to achieve, even with an  
 153 almost complete coverage of the population aged 12+ years. This is due to the high transmissibility of  
 154 the Delta variant and the imperfect protection against infection granted by vaccination. However,  
 155 expanding the coverage would allow a significant resumption of social activity while maintaining the  
 156 reproduction number under the epidemic threshold (Figure 4B), from a 56% (95% CI: 45-62%) of pre-  
 157 pandemic contacts estimated for a coverage >60% in all age classes (close to the uptake level already  
 158 achieved on September 7, 2021) to a projected 76% (95% CI: 48-100%) for a 100% coverage of the  
 159 eligible age groups (12 years or older). If a pediatric vaccine (for children aged 5 years and older) will  
 160 be licensed and widely distributed, we projected that herd immunity may be reached even for a  
 161 complete return to pre-pandemic social behavior with a coverage of at least 90% in all age classes  
 162 (Figure 4D). Such herd immunity, however, would be only temporary, due to the waning vaccine  
 163 protection over time.

164 We analyze the sensitivity of the estimated prospective reproduction numbers against different  
 165 values for the increase in transmissibility of Delta compared to Alpha (and in absence of a pediatric  
 166 vaccine). We show that for a transmissibility increase of 25%, the proportion of pre-pandemic  
 167 contacts that could be resumed without causing an epidemic would increase to 65-85%, depending  
 168 on the coverage scenario (Figure 5A). If Delta is 75% more transmissible than Alpha, the  
 169 corresponding range would be limited to 45-60% (Figure 5B).



170

171 **Figure 4. Scenarios for the expansion of vaccination coverage.** A) Schematic of simulated scenarios. All age  
 172 classes with coverage below a given value  $\Omega$  are assumed to progress to  $\Omega$ ; all age classes above  $\Omega$  will remain at  
 173 the coverage level achieved on Sep 7. B) Proportion of pre-pandemic contacts corresponding to a reproduction  
 174 number of 1 for three selected vaccination scenarios; levels estimated to be active on June 30, 2021 (with and  
 175 without vaccination) are reported for comparison. Bars: mean; vertical lines: 95% CI. C) Heatmap of the  
 176 estimated reproduction number for different vaccination scenarios (x axis) and different levels of social activity  
 177 (y axis). Contour lines discriminate different values of the reproduction number. The thicker contour line  
 178 represents the epidemic threshold of 1. D) As C, but assuming that coverage  $\Omega$  is achieved also in pediatric age-  
 179 groups (5-11 years).



180

181 **Figure 5. Sensitivity analysis with respect to the transmissibility increase of the Delta with respect to the Alpha**  
182 **variant.** Heatmap of the projected reproduction number for different vaccination scenarios (x axis) and different  
183 levels of social activity (y axis), under a transmissibility increased by A) 25% and B) 75%, compared to the Alpha  
184 variant.

185

## 186 Discussion

187 In this work, we quantified the retrospective and prospective impact of the COVID-19 vaccination  
188 campaign in Italy, which kicked off on December 27, 2020. First, we show that in the first half of 2021,  
189 a similar epidemic trajectory in absence of the vaccine would have resulted in a 27% (95% CI 15-47%)  
190 excess of COVID-19 deaths compared to the ones observed in the same period. This would have also  
191 required a reduction of social activity by one quarter (from 48% to 35% of pre-pandemic contacts at  
192 the end of June). In addition, a much higher risk for further waves of infection would be maintained,  
193 with an average effective reproduction number on June 30, 2021, of 2.6, instead of the 1.9 estimated  
194 in the presence of vaccination. Second, our results suggest that the replacement of the Alpha variant  
195 (and of other lineages) with the more transmissible Delta variant during the month of July was offset  
196 by the progression of the vaccination campaign in the months of July and August, resulting in a value  
197 of the reproduction number in early September that was similar to the one estimated at the end of  
198 June 2021. Summer vaccinations, however, did not reduce the transmissibility alone, but also the risk  
199 of severe disease and death in the population, given the high effectiveness of vaccines against these  
200 endpoints; thus, despite the Delta variant, the epidemiological outlook at the start of September 2021  
201 was likely better than that at the end of June 2021. Finally, we estimate that expanding the vaccine  
202 coverage will allow a further increase of social activity while maintaining the reproduction number  
203 below the epidemic threshold. However, the high transmissibility of Delta and the imperfect vaccine  
204 protection against infection will not allow a complete return of society to the pre-pandemic life  
205 without the risk of occurrence of further pandemic waves. Should a pediatric vaccine (for ages 5 and  
206 older) be licensed and a coverage >90% be achieved in all age classes, a complete return to pre-  
207 pandemic society could still be envisioned. For these estimates, we assume that between September  
208 7, 2021, and the time the coverage for that vaccination scenario has been reached, the alteration of  
209 the population immunity profile due to the opposite forces of waning immunity and of the continued  
210 circulation of SARS-CoV-2 will be negligible, compared to that caused by the progression of  
211 vaccination. This assumption may be broken if large waves of COVID-19 occur before reaching the  
212 considered coverage or if enough time elapses (several months) for a substantial waning of immunity.

213 However, the administration of booster doses that is taking off in the fall of 2021 in countries with a  
214 high population coverage, including Italy [30], will likely reduce the risks related to waning immunity.

215 One limitation of this study is that we implicitly assumed that vaccinated and unvaccinated individuals  
216 have the same probability of contacting each other. However, it is known that vaccine hesitancy  
217 clusters spatially and demographically [31], increasing the probability of local outbreaks in  
218 undervaccinated pockets even when the average reproduction number is below the epidemic  
219 threshold. To explore this effect, data on the clustering of COVID-19 vaccine hesitancy are warranted.

220 We did not consider the effect on our results of other features of the Delta variant, such as its  
221 potential ability to escape natural immunity [24, 32-34], which is still partially undefined. In addition,  
222 even the increased transmissibility of Delta is subject to several unknowns; its value was estimated in  
223 situations where physical distancing restrictions were broadly active and thus a large proportion of  
224 interactions were with close contacts [12,13]. It is possible that, as interventions relax and social  
225 contacts increases, the estimated transmission advantage of Delta over Alpha (about 50%) will be  
226 different. In a sensitivity analysis, we showed that the actual value of this parameter critically affects  
227 epidemiological prospects.

228 The dynamics of loss of protection over time for different population demographics (age,  
229 comorbidities) and clinical endpoints (infection, death, transmissibility of breakthrough infections) will  
230 likely affect future COVID-19 trajectories and must be better elucidated with long-term follow-up  
231 studies. Based on preliminary studies [22, 23], we assumed an average duration of two years for the  
232 protection conferred by both infection and vaccination, and equal for all individuals. In sensitivity  
233 analyses, we show that different durations of the natural immunity may affect our estimates of the  
234 effective reproduction number at the end of June, 2021 and therefore impact prospective scenarios  
235 for the next year (see Appendix). Similarly, if breakthrough infections were as transmissible as  
236 infections in unvaccinated individual, this would increase the estimated reproduction numbers and  
237 reduce the levels of societal reopening that would be affordable (see Appendix).

238 This work highlights the multiple epidemiological and social benefits allowed by the vaccination  
239 efforts in terms of averted deaths, reopening of social activity, and reduced risks of further epidemic  
240 waves. In addition, our study shows the potential for further resuming social activities granted by the  
241 expansion of vaccination coverage in the perspective of “living with the virus”. In particular, the  
242 availability of pediatric vaccines, which, as of October 2021, are under scientific investigation and  
243 regulatory scrutiny [35], could greatly contribute to societal reopening should the coverage be  
244 sufficiently high. However, the acceptability of a pediatric vaccine may be limited by the perceived  
245 small risk of COVID-19 disease in children, especially if adverse vaccine events will be recorded even  
246 with very low rates [36].

247 The scenario of complete resumption of pre-pandemic social life would entail removing all of the  
248 persisting factors that today still reduce the number of an individual’s contacts compared to the pre-  
249 COVID-19 era. These include: residual governmental limitations (e.g., capacities in stadiums and  
250 discotheques, number of people who can be seated together at restaurants indoors, etc.);  
251 organizational measures reducing crowding (e.g., capacity of workplace spaces and the use of work  
252 from home, distancing of desks in schools, mandatory booking for recreational and cultural activities,  
253 regulations for weddings and other large events); social distancing etiquette; and individual choices to  
254 reduce one’s own risks of infection. In addition, several preventive measures further reduce the  
255 contacts that are important for transmission (those considered in the model) without significantly



256 affecting social interactions, e.g., mandates for EU digital COVID-19 certificate [37] (currently required  
257 in Italy for accessing workplaces, schools, and indoor recreational facilities), ventilation policies and air  
258 filtering systems on public transport, plexiglass separators between restaurant tables or at counters of  
259 commercial and public offices, face masks, and testing, tracing and isolation protocols. Although  
260 quantifying the impact of each of these measures and norms is extremely hard, it is likely that many  
261 of them will linger for a long time without a significant negative influence on either the economy or  
262 the social life of individuals. Therefore, a complete resumption of pre-pandemic contacts in the sense  
263 considered by the model may not necessarily be a key objective. Depending on the measures that will  
264 be maintained and on the acquired coverage, we estimate the SARS-CoV-2 reproduction number to  
265 take values between 0.7 (if contacts will not increase and coverage will be close to 100%) and 1.8 (if  
266 social activity will be fully resumed and norms will be abandoned without increases in vaccine  
267 coverage).

268 Finally, we stress that our prospective results need to be revised in case of the future emergence of  
269 new hypertransmissible variants. Such a possibility could jeopardize the gains afforded by vaccination  
270 programs, forcing new setbacks in the recovery of social contacts and exacerbating the burden of a  
271 potential further epidemic resurgence.

272

## 273 **Methods**

274 We developed an age-structured stochastic model of SARS-CoV-2 transmission and vaccination, based  
275 on a susceptible-infectious-removed-susceptible (SIRS) scheme [17,18]. The population is stratified by  
276 age (17 5-year age groups from 0 to 84 years plus one age group for individuals aged 85 years or  
277 older) and presence/absence of comorbidities. Mixing patterns are encoded by an age-specific social  
278 contact matrix estimated prior to the COVID-19 pandemic [20]. Susceptibility to SARS-CoV-2 infection  
279 is assumed to be age-dependent (lower in children under 15 years of age and higher for the elderly  
280 above 65 years, compared to individuals aged 15-65) [38]. Infectiousness was assumed to be  
281 homogeneous by age groups and symptomatic status [38, 39]. We consider a basic reproduction  
282 number  $R_0$  for historical lineages of 3.0 [19,40, 41]. The model was used to simulate the vaccination  
283 campaign and the evolution of COVID-19 epidemiology in Italy between December 27, 2020 (start of  
284 vaccination) and June 30, 2021. Throughout this period, the dominant variant was Alpha [24];  
285 therefore, in our retrospective investigation we considered an increase in transmissibility by 50%  
286 compared to historical lineages [24, 42, 43].

287 The rollout of the vaccination campaign is modeled using detailed data on the daily age-specific  
288 number of doses administered over the considered period [21]. Individuals are considered eligible for  
289 vaccination, independently of a previous diagnosis of SARS-CoV-2 infection. To account for  
290 preferential administration of different types of vaccines by age group, we estimated the age-specific  
291 vaccine efficacy against infection by weighting the efficacy of a specific vaccine type (mRNA vs. viral  
292 vectors) by the number of vaccines of that type administered to each age group [21], considering a  
293 vaccine efficacy against infection of 89% after two doses of mRNA vaccine, and of 62% after two  
294 doses of viral vector vaccine [8,9]. The efficacy against death was set to 80.6% in partially and 96.4%  
295 in fully vaccinated individuals [28]. Breakthrough infections (i.e., infections in vaccinated individuals)  
296 were assumed to be half as infectious as those in unvaccinated individuals [44, 45]; we additionally  
297 considered a sensitivity analysis where the infectiousness is the same. Immune protection is assumed  
298 to wane after an exponentially distributed time (average 2 years [22, 23] in the baseline for both the

299 natural and vaccine-induced protection; alternative values are considered as sensitivity analyses).  
300 After waning of protection, individuals are considered fully susceptible.

301 To reproduce the epidemic curve over the study period, we adjusted a scaling factor representing the  
302 proportion of pre-pandemic contacts that were active on a given day, in such a way that the model's  
303 reproduction number (estimated via the Next Generation Matrix approach [46, 47]) would match the  
304 corresponding estimate from surveillance data [10]. We compared estimates obtained with the actual  
305 vaccination rollout against those that would be required in a hypothetical scenario without  
306 vaccination to obtain the same epidemic curve. We evaluated the prospective impact of the  
307 vaccination campaign by considering the replacement of the Alpha with the Delta variant (occurred in  
308 July 2021) [25], which is assumed to be 50% more transmissible [11-13] (transmissibility increases of  
309 25% and 75% are considered in sensitivity analyses). We also considered vaccination scenarios where  
310 the age-specific vaccination coverage achieved by September 7, 2021, is incremented for all age  
311 classes that were below a given target coverage  $\Omega$  at that date and left unchanged for age classes  
312 above. For each scenario, we estimate reproduction numbers under different degrees of resumption  
313 of pre-pandemic contacts (from 0% to 100%). Full model details are reported in Appendix.

314  
315

### 316 **Competing interest and funding**

317 M.A. has received research funding from Seqirus. The funding is not related to COVID-19. All other authors  
318 declare no competing interest. V.M., G.G., F.R., P.Po., F.T., M.M., P. Pe. and S.M. acknowledge funding from EU  
319 grant 874850 MOOD (catalogued as MOOD 020). V.M., G.G., P.Po., and S.M. acknowledge funding from the VRT  
320 Foundation Trento project COVIDVAX. The contents of this publication are the sole responsibility of the authors  
321 and don't necessarily reflect the views of the funders.

322  
323

### 323 **References**

- 324 1. WHO coronavirus (COVID-19) dashboard. <https://covid19.who.int/>. Accessed on Mar 15, 2021.
- 325 2. Trentini, F. et al. The pressure on healthcare system and intensive care utilization during the COVID-19  
326 outbreak in the Lombardy region: a retrospective observational study on 43,538 hospitalized patients.  
327 *Am. J. Epidemiol.* doi: 10.1093/aje/kwab252
- 328 3. McKibbin, W. & Fernando, R. The economic impact of COVID-19. *Economics in the Time of COVID-19*,  
329 45 (2020).
- 330 4. Pfefferbaum, B. & North, C. S. Mental health and the Covid-19 pandemic. *N. Engl. J. Med.*, 383(6), 510-  
331 512 (2020).
- 332 5. Our world in data. COVID-19 Data Explorer. [https://ourworldindata.org/explorers/coronavirus-data-](https://ourworldindata.org/explorers/coronavirus-data-explorer)  
333 [explorer](https://ourworldindata.org/explorers/coronavirus-data-explorer). Accessed on Oct 15, 2021.
- 334 6. Shapiro, J., Dean, N. E., Madewell, Z. J., Yang, Y., Halloran, M. E., Longini, I. Efficacy Estimates for  
335 Various COVID-19 Vaccines: What we Know from the Literature and Reports. medRxiv. doi:  
336 <https://doi.org/10.1101/2021.05.20.21257461> (2021).
- 337 7. Haas, E. J. et al. Impact and effectiveness of mRNA BNT162b2 vaccine against SARS-CoV-2 infections  
338 and COVID-19 cases, hospitalisations, and deaths following a nationwide vaccination campaign in  
339 Israel: an observational study using national surveillance data. *Lancet*, 397.10287: 1819-1829 (2021).
- 340 8. Emary, K. R. W. et al. Efficacy of ChAdOx1 nCoV-19 (AZD1222) vaccine against SARS-CoV-2 variant of  
341 concern 202012/01 (B.1.1.7): an exploratory analysis of a randomised controlled trial. *Lancet*,  
342 397(10282), 1351-1362 (2021).
- 343 9. Abu-Raddad, L. J., Chemaitelly, H., Butt, A. A. & National Study Group for COVID-19 Vaccination.  
344 Effectiveness of the BNT162b2 Covid-19 Vaccine against the B.1.1.7 and B.1.351 Variants. *N. Engl. J.*  
345 *Med.*, 385(2):187-189. doi: 10.1056/NEJMc2104974 (2021).

- 346 10. Istituto Superiore di Sanità. Epidemia COVID-19 - Aggiornamento nazionale 6 ottobre 2021. Available  
347 at: [https://www.epicentro.iss.it/coronavirus/bollettino/Bollettino-sorveglianza-integrata-COVID-19\\_6-](https://www.epicentro.iss.it/coronavirus/bollettino/Bollettino-sorveglianza-integrata-COVID-19_6-ottobre-2021.pdf)  
348 [ottobre-2021.pdf](https://www.epicentro.iss.it/coronavirus/bollettino/Bollettino-sorveglianza-integrata-COVID-19_6-ottobre-2021.pdf)
- 349 11. Campbell, F. et al. Increased transmissibility and global spread of SARS-CoV-2 variants of concern as at  
350 June 2021. *Eurosurveillance* 26(24):2100509. doi: 10.2807/1560-7917.ES.2021.26.24.2100509 (2021).
- 351 12. Keeling, M. J. Estimating the Transmission Advantage for B.1.617.2. Available at:  
352 [https://assets.publishing.service.gov.uk/government/uploads/system/uploads/attachment\\_data/file/9](https://assets.publishing.service.gov.uk/government/uploads/system/uploads/attachment_data/file/993156/S1269_WARWICKTransmission_Advantage.pdf)  
353 [93156/S1269\\_WARWICKTransmission\\_Advantage.pdf](https://assets.publishing.service.gov.uk/government/uploads/system/uploads/attachment_data/file/993156/S1269_WARWICKTransmission_Advantage.pdf)
- 354 13. Alizon, S. et al. Rapid spread of the SARS-CoV-2 Delta variant in some French regions, June 2021.  
355 *Eurosurveillance*, 26(28): 2100573 (2021).
- 356 14. Kofman, A., Kantor, R. & Adashi, E.Y. Potential COVID-19 Endgame Scenarios: Eradication, Elimination,  
357 Cohabitation, or Conflagration? *JAMA*, 326(4):303–304. doi:10.1001/jama.2021.11042 (2021).
- 358 15. Baker, M. G., Wilson, N. & Blakely, T. Elimination could be the optimal response strategy for COVID-19  
359 and other emerging pandemic diseases. *BMJ* 371, m4907 (2020).
- 360 16. Piot, P., & Spencer, J. Towards Societies Living with COVID-19 *China CDC Weekly*, 3(7): 144-145 (2021).  
361 doi: 10.46234/ccdcw2021.041
- 362 17. Marziano, V. et al. Retrospective analysis of the Italian exit strategy from COVID-19 lockdown. *Proc.*  
363 *Natl Acad. Sci.* 118, e2019617118 (2021).
- 364 18. Yang, J. et al. Despite vaccination, China needs non-pharmaceutical interventions to prevent  
365 widespread outbreaks of COVID-19 in 2021. *Nat. Hum. Behav.* 5, 1009–1020 (2021).  
366 <https://doi.org/10.1038/s41562-021-01155-z>
- 367 19. Riccardo, F. et al. Epidemiological characteristics of COVID-19 cases and estimates of the reproductive  
368 numbers 1 month into the epidemic, Italy, 28 January to 31 March 2020. *Eurosurveillance* 25, 2000790  
369 (2020).
- 370 20. Mossong, J. et al. Social contacts and mixing patterns relevant to the spread of infectious diseases.  
371 *PLoS Med.* 5, e74 (2008).
- 372 21. Struttura Commissariale per l'Emergenza Covid-19. Open data on COVID-19 vaccination in Italy.  
373 <https://github.com/italia/covid19-opendata-vaccini>. Accessed on October 15, 2021
- 374 22. Hall, V. J. et al. SARS-CoV-2 infection rates of antibody-positive compared with antibody-negative  
375 health-care workers in England: a large, multicentre, prospective cohort study (SIREN). *Lancet* 397,  
376 1459–1469 (2021).
- 377 23. Andrews, N. Vaccine effectiveness and duration of protection of Comirnaty, Vaxzevria and Spikevax  
378 against mild and severe COVID-19 in the UK. medRxiv. doi:  
379 <https://doi.org/10.1101/2021.09.15.21263583> (2021).
- 380 24. Stefanelli P. et al. Co-circulation of SARS-CoV-2 Alpha and Gamma variants in Italy, February-March  
381 2021. *Eurosurveillance* (in press).
- 382 25. Istituto Superiore di Sanità. Prevalenza e distribuzione delle varianti di SARS-CoV-2 di interesse per la  
383 sanità pubblica in Italia - Rapporto n. 5 del 23 luglio 2021. Available at:  
384 [https://www.epicentro.iss.it/coronavirus/pdf/sars-cov-2-monitoraggio-varianti-rapporti-periodici-23-](https://www.epicentro.iss.it/coronavirus/pdf/sars-cov-2-monitoraggio-varianti-rapporti-periodici-23-luglio-2021.pdf)  
385 [luglio-2021.pdf](https://www.epicentro.iss.it/coronavirus/pdf/sars-cov-2-monitoraggio-varianti-rapporti-periodici-23-luglio-2021.pdf)
- 386 26. Istituto Superiore di Sanità. Prevalenza e distribuzione delle varianti di SARS-CoV-2 di interesse per la  
387 sanità pubblica in Italia - Rapporto n. 9 del 17 settembre 2021. Available at:  
388 [https://www.epicentro.iss.it/coronavirus/pdf/sars-cov-2-monitoraggio-varianti-rapporti-periodici-17-](https://www.epicentro.iss.it/coronavirus/pdf/sars-cov-2-monitoraggio-varianti-rapporti-periodici-17-settembre-2021.pdf)  
389 [settembre-2021.pdf](https://www.epicentro.iss.it/coronavirus/pdf/sars-cov-2-monitoraggio-varianti-rapporti-periodici-17-settembre-2021.pdf)
- 390 27. Istituto Superiore di Sanità. COVID-19 ISS open data – EpiCentro. Available at:  
391 [https://www.epicentro.iss.it/coronavirus/open-data/covid\\_19-iss.xlsx](https://www.epicentro.iss.it/coronavirus/open-data/covid_19-iss.xlsx). Accessed on October 15, 2021
- 392 28. Istituto Superiore di Sanità. Epidemia COVID-19 - Aggiornamento nazionale 28 luglio 2021. Available at:  
393 [https://www.epicentro.iss.it/coronavirus/bollettino/Bollettino-sorveglianza-integrata-COVID-19\\_28-](https://www.epicentro.iss.it/coronavirus/bollettino/Bollettino-sorveglianza-integrata-COVID-19_28-luglio-2021.pdf)  
394 [luglio-2021.pdf](https://www.epicentro.iss.it/coronavirus/bollettino/Bollettino-sorveglianza-integrata-COVID-19_28-luglio-2021.pdf)

- 395 29. Istituto Superiore di Sanità. Epidemia COVID-19 - Aggiornamento nazionale 22 settembre 2021.  
396 Available at: [https://www.epicentro.iss.it/coronavirus/bollettino/Bollettino-sorveglianza-integrata-](https://www.epicentro.iss.it/coronavirus/bollettino/Bollettino-sorveglianza-integrata-COVID-19_22-settembre-2021.pdf)  
397 [COVID-19\\_22-settembre-2021.pdf](https://www.epicentro.iss.it/coronavirus/bollettino/Bollettino-sorveglianza-integrata-COVID-19_22-settembre-2021.pdf)
- 398 30. Ministero della Salute. Avvio della somministrazione di dosi “booster” nell’ambito della campagna di  
399 vaccinazione anti SARS-CoV-2/COVID-19. Available at:  
400 [trovanorme.salute.gov.it/norme/renderNormsanPdf?anno=2021&codLeg=82953&parte=1%20&serie=](trovanorme.salute.gov.it/norme/renderNormsanPdf?anno=2021&codLeg=82953&parte=1%20&serie=null)  
401 [null](trovanorme.salute.gov.it/norme/renderNormsanPdf?anno=2021&codLeg=82953&parte=1%20&serie=null)
- 402 31. Salathé, M. & Bonhoeffer, S. The Effect of Opinion Clustering on Disease Outbreaks. *J. R. Soc. Interface*  
403 *5*, 1505–1508 (2008).
- 404 32. Faria, N. R. et al. Genomics and epidemiology of the P.1 SARS-CoV-2 lineage in Manaus, Brazil. *Science*  
405 *372*, 815–821 (2021).
- 406 33. Greaney, A. J. et al. Comprehensive mapping of mutations in the SARS-CoV-2 receptor-binding domain  
407 that affect recognition by polyclonal human plasma antibodies. *Cell Host Microbe* *29*, 463–476 (2021).
- 408 34. Wang, P. et al. Antibody resistance of SARS-CoV-2 variants B.1.351 and B.1.1.7. *Nature* *593*, 130–135  
409 (2021).
- 410 35. Pfizer Inc. Pfizer and BioNtech submit initial data to U.S. FDA from pivotal trial of COVID-19 vaccine in  
411 children 5 to <12 years of age. Available at: [https://www.pfizer.com/news/press-release/press-release-](https://www.pfizer.com/news/press-release/press-release-detail/pfizer-and-biontech-submit-initial-data-us-fda-pivotal)  
412 [detail/pfizer-and-biontech-submit-initial-data-us-fda-pivotal](https://www.pfizer.com/news/press-release/press-release-detail/pfizer-and-biontech-submit-initial-data-us-fda-pivotal)
- 413 36. Bozkurt, B., Kamat, I., & Hotez, P. J. Myocarditis with COVID-19 mRNA vaccines. *Circulation*, *144*(6),  
414 471-484 (2021).
- 415 37. European Commission. EU Digital COVID Certificate. [https://ec.europa.eu/info/live-work-travel-](https://ec.europa.eu/info/live-work-travel-eu/coronavirus-response/safe-covid-19-vaccines-europeans/eu-digital-covid-certificate_en)  
416 [eu/coronavirus-response/safe-covid-19-vaccines-europeans/eu-digital-covid-certificate\\_en](https://ec.europa.eu/info/live-work-travel-eu/coronavirus-response/safe-covid-19-vaccines-europeans/eu-digital-covid-certificate_en)
- 417 38. Hu, S. et al. Infectivity, susceptibility, and risk factors associated with SARS-CoV-2 transmission under  
418 intensive contact tracing in Hunan, China. *Nat. Commun.* *12*, 1533 (2021).
- 419 39. Sun, K. et al. Transmission heterogeneities, kinetics, and controllability of SARS-CoV-2. *Science* *371*,  
420 eabe2424 (2021).
- 421 40. Cereda, D. et al. The early phase of the COVID-19 outbreak in Lombardy, Italy.  
422 <https://arxiv.org/pdf/2003.09320.pdf> (2020).
- 423 41. Guzzetta, G. et al. Impact of a nationwide lockdown on sars-cov-2 transmissibility, Italy. *Emerg. Infect.*  
424 *Dis.* *27*, 267 (2021).
- 425 42. Volz, E. et al. Assessing transmissibility of SARS-CoV-2 lineage B.1.1.7 in England. *Nature* *593*, 266–269  
426 (2021).
- 427 43. Davies, N. G. et al. Estimated transmissibility and impact of SARS-CoV-2 lineage B.1.1.7 in England.  
428 *Science* <https://doi.org/10.1126/science.abg3055> (2021).
- 429 44. Harris, R.J., Hall, J.A., Zaidi, A., Andrews, N.J., Dunbar, J. K., Dabrera, G. Effect of Vaccination on  
430 Household Transmission of SARS-CoV-2 in England. *N. Engl. J. Med.* *385*(8):759-760. doi:  
431 [10.1056/NEJMc2107717](https://doi.org/10.1056/NEJMc2107717) (2021).
- 432 45. Lipsitch, M. & Kahn, R. Interpreting vaccine efficacy trial results for infection and transmission. *Vaccine*,  
433 *39*(30): 4082-4088 (2021).
- 434 46. Diekmann, O., Heesterbeek, J. A. P. & Metz, J. A. On the definition and the computation of the basic  
435 reproduction ratio  $R_0$  in models for infectious diseases in heterogeneous populations. *J. Math Biol.* *28*,  
436 365–382 (1990).
- 437 47. Diekmann, O., Heesterbeek, J. A. & Roberts, M. G. The construction of next-generation matrices for  
438 compartmental epidemic models. *J. R. Soc. Interface* *7*, 873–885 (2010).