

Heightened COVID-19 Vaccine Response Following SARS-CoV-2 Infection

Departments of Thoracic Medicine and Surgery¹, Anatomy² and Emergency Medicine³
Lewis Katz School of Medicine at Temple University
Philadelphia PA 19140

Steven G. Kelsen¹, Alan S. Braverman^{1, 2}, Puja Patel¹, Mark O. Aksoy¹, Jacob Hayman¹,
Charu Rajput¹, Michael R. Ruggieri Sr.² and Nina Gentile³

Address Correspondence to:

Steven G. Kelsen MD
Room 735 Parkinson Pavilion
Temple University Hospital
3401 N. Broad St.
Philadelphia PA 19140
215-707-2237
kelsen@temple.edu

ABSTRACT

Background: The SARS–CoV–2 mRNA vaccines now available are highly effective at preventing infection and afford the prospect of an end to the pandemic. Vaccines are in scarce supply, however. Current recommendations in the United States are that subjects with a previous history of SARS CoV-2 infection/COVID-19 disease should receive the full vaccine regimen. This is despite the fact that prior SARS-CoV-2 infection confers some degree of protection and that the immune response to the vaccine is not well studied.

Methods: The present study compared the time course and magnitude of the humoral immune response to an mRNA SARS-CoV-2 vaccine (BNT162b2) in subjects with prior infection/COVID-19 disease (n=24) and those without prior infection (n=25). Serum anti-Spike RBD antibody and serum neutralizing activity were assessed longitudinally prior to and at 2-week intervals for 56 days post first dose of vaccine. Subjects received the standard Pfizer BNT162b2 mRNA vaccine regimen i.e., two doses of 30 µg, 3 weeks apart.

Findings: The cohort with prior COVID-19 achieved robust increases in anti-Spike IgG antibody and serum neutralizing activity compared to the SARS–CoV-2 naïve cohort at day 14 post vaccine. Thereafter, the COVID-19 cohort showed relatively little further increase in humoral immunity even after the second dose such that anti-Spike IgG and neutralizing activity were similar in the 2 groups from day 28 through day 56.

Conclusions: In contrast to the responses of SARS–CoV-2 naïve subjects in whom a 2 dose regimen appears to be required to achieve robust immune protection, subjects with prior SARS–CoV-2 infection exhibit immune memory and have a robust response to the first dose of an mRNA vaccine. They may require only a single dose of vaccine.

INTRODUCTION

Immune memory achieved either by primary infection or vaccination prevents or greatly attenuates the severity of SARS-CoV-2 re-infection and COVID-19¹⁻⁶. In fact, 90-99% of SARS-CoV-2 infected individuals develop humoral and cell-mediated, adaptive immunity⁷⁻⁹. In support of the existence of protective immunity following SARS-CoV-2 infection, epidemiological data indicate that symptomatic SARS-CoV-2 reinfection in the 6 to 12 months of the COVID-19 pandemic is rare^{4,10}. While the precise duration of immunity against SARS-CoV-2 remains to be determined, robust humoral and cell mediated immunity against SARS – CoV-2 persists for \geq 6 to 8 months in the majority of individuals^{9,11}.

Vaccines against the SARS–CoV–2 virus afford a way to rapidly achieve widespread, protective immunity of the uninfected US population and thus end the COVID-19 pandemic. In fact, phase 2/3 clinical trials of the “Pfizer”-BNT162b2 and “Moderna”-mRNA-1273 mRNA vaccines now in use demonstrate 90-95% protection against SARS-CoV-2 infection and 100% effectiveness in preventing severe COVID-19 disease, hospitalization or death^{3,5,12}. Similar protective efficacy of the Pfizer BNT162b2 vaccine has been reported in a country-wide population study in Israel³.

Both mRNA vaccines utilize the full length spike protein as the immunogen and generate robust levels of anti-spike IgG antibody and memory T and B cells¹³⁻¹⁵. In fact, both vaccines produce anti-Spike IgG levels which greatly exceed levels found in COVID-19 convalescent serum. Antibodies against the Spike protein, especially those attacking the receptor binding domain (RBD), are particularly important because they are “neutralizing” i.e., they prevent SARS-CoV-2 entry into human respiratory cells^{8,16}. In fact, a principal surrogate of immune protection and vaccine efficacy is the titer of anti-Spike IgG antibody generated^{9,17,18}.

Recommendations by US authorities (i.e. the CDC) recommend vaccination for all adults including those who have experienced SARS-CoV-2 infection or COVID-19 disease¹⁹. Interestingly, this recommendation has been made despite the fact that trials of both COVID-19 mRNA vaccines excluded volunteers with a history of COVID-19 disease; most subjects post COVID-19 have durable immune memory; and the rate of SARS-CoV-2 re-infection in the 9 months since the pandemic started has been quite low. Given the scarcity of vaccines, this approach has been questioned recently and it has been suggested that subjects with a history of prior SARS-CoV-2 infection receive 1 dose of the vaccine and the second dose at some future date²⁰⁻²³.

Accordingly, this longitudinal study examined the immune response to the Pfizer BNT162b2 vaccine in subjects with a prior SARS-CoV-2 infection / COVID-19 disease and compared their response to SARS-CoV-2 naïve subjects. Specifically, we investigated the magnitude and time course of the anti-Spike RBD IgG and serum neutralizing activity induced by the BNT162b2 vaccine in healthcare workers studied before and serially for 8 weeks post vaccination. A single vaccine i.e., BNT162b2, was used in order to avoid possible confounding effects of differences in immune potency across vaccines.

METHODS

Subjects recruited into the vaccine study (n=49) were first-line healthcare workers (i.e., physicians, nurses, respiratory therapists or other ancillary health care personnel) participating in an ongoing surveillance study of the prevalence of SARS-CoV-2 seropositivity in our multi-hospital Health System (n=281). Subjects in the vaccine sub-study agreed to have serum humoral immunity assessed prior to and at 2-week intervals for 56 days following the initial dose of the BNT162b2 mRNA vaccine. There were no exclusion criteria. The study was approved by our Institutional Review Board.

Subjects were placed into one of two groups: a prior SARS-CoV-2 infection / COVID-19 positive group (the COVID-19 group) or a SARS-CoV-2 naïve group (the control group). The COVID-19 group had either a positive

nasopharyngeal swab for virus RNA or seroconversion of IgG against the Spike protein. In contrast, the control group did not have detectable IgG against the Spike protein; viral RNA isolated by PCR; or COVID-19 compatible symptoms.

To define the rate of change and maximal levels of IgG antibodies achieved post vaccination, blood samples were obtained prior to vaccination and subsequently at days 14, 28, 35, 42, and 56 after the first vaccine dose. Those sampling intervals were based on the BNT162b2 phase 1 trial which demonstrated maximal immune responses by day 42 ¹⁴ .

At the pre-vaccination visit, all subjects completed a questionnaire detailing their history of SARS-CoV-2 infection / COVID-19 disease, job description, demographics and comorbidities.

The BNT162b2 vaccine was given to all subjects as currently recommended i.e., two 0.5 ml intramuscular injections of 30 µg given 3-weeks apart. Vaccine administration took place from December 16, 2020 to February 17, 2021.

SARS-CoV-2 Antibody

Serum IgG antibody levels against the SARS-CoV-2 Spike receptor binding domain (RBD) were quantified by a two-step immunoassay using the Beckman Coulter, Access[®] microparticle-based assay system run on a high throughput, Beckman Coulter immunoassay system (UniCel Dxl 800). This assay uses antigen-coated paramagnetic particles which when mixed with subject serum creates an antigen-antibody complex. Anti-human IgG acridinium-labeled conjugate is then added to create a chemiluminescent signal measured as relative light units (RLU). A standard curve constructed using recombinant human anti-SARS-CoV2 IgG1 antibody (clone CR3022, BEI Resources, Manassas, VA) over a range of concentrations was run with each group of samples to allow conversion of RLU to µg/mL. Serum samples were diluted 1:10 and 1:20 to ensure that signals remained in the linear range of the standard curve.

Neutralization Assay

Neutralization assays were performed using lentiviral particles pseudotyped for the SARS-CoV-2 Spike protein and expressing luciferase as previously described ^{24,25}. In brief, pseudovirus uptake via ACE2 receptor was assessed using HEK-293T cells overexpressing the ACE2 receptor (BEI Resources, #NR-52511). Luciferase activity was assayed with a luminometer (GloMax Discover, Promega Corp., #GM3000). Neutralizing activity was expressed as the serum dilution which produced 50% inhibition of pseudoparticle entry (IC₅₀). A neutralizing mAb targeting the Spike protein RBD (BEI Resources, #NR-53795) was run with each assay as a positive control.

Statistical Analysis

Group data was assessed as mean ± 1 standard error (SE). Comparison of group mean antibody concentrations at a given point in time was assessed by unpaired t test. Comparison of antibody results over time, or antibody levels in the COVID-19 and control groups, or neutralization data over a range of serum concentrations in the COVID-19 and control groups were assessed by analysis of variance (ANOVA) for repeated measures. Comparison of group mean antibody concentrations at a given point in time in the two groups was assessed by unpaired t test. Comparison of categorical variables between groups was assessed by Chi square – Fisher Exact test. Statistical significance of differences in group mean values was accepted at the <0.05 level.

RESULTS

Study Population

Demographic characteristics of SARS-CoV-2 / COVID-19 disease (n =24) and SARS-CoV-2 naïve, control groups (n= 25) are shown in **Table 1**.

Mean age in the COVID-19 and control groups was 46 years and 45 years, respectively ($p>0.90$). Gender was approximately equally divided between males and females 50% and 56% in COVID-19 and control groups, respectively ($p>0.90$). Most subjects in both groups were Caucasians (83% and 80%, respectively) but the groups also included African-Americans and Asians. Accordingly, subjects in the COVID-19 and control groups were well matched in terms of age, gender and ethnicity.

Clinical features of the COVID-19 group are shown in **Table 1**. The majority of subjects (88%) were mildly to moderately symptomatic. Most subjects experienced fatigue (58%) or myalgia (58%). A minority experienced fever (38%), shortness of breath (38%) or cough (42%). One subject had COVID–pneumonia but was not hypoxic. None were hospitalized or had a complicated course. Three (3) subjects in the COVID-19 group (12%) were asymptomatic. One asymptomatic subject had a positive nasal swab PCR during surveillance. Two were nasal swab PCR negative but were seropositive for the anti-Spike IgG antibody.

Vaccine Humoral Immune Responses

The first dose of vaccine was given to subjects in the COVID–19 group 200 ± 18 SE days post symptom onset (PSO) but the range was wide (**Table 1**). Most subjects (58%) received their first vaccine dose more than 220 days (i.e., > 7 months) PSO but two subjects (8%) received the vaccine less than 2 months PSO i.e., 25 and 38 days.

Anti-SARS-CoV-2 antibodies

Following the first dose of vaccine, anti-Spike RBD antibody increased progressively in both COVID-19 and control groups, reached peak values at 28 days and declined thereafter ($p<0.001$ for both groups)(**Figure 1**). However, the time course of the anti-Spike IgG antibody response differed significantly between the COVID-19 and control groups ($p<0.02$ by repeated measures ANOVA).

In particular, anti-Spike antibody level was significantly higher at day 14 in the COVID-19 group than in the control group (39.0 ± 6.9 $\mu\text{g/ml}$ vs 2.5 ± 0.6 $\mu\text{g} / \text{ml}$, respectively, $p<0.001$). At subsequent time points, anti-Spike Ab levels tended to be higher in the COVID-19 group but were not significantly different from controls. This was the case because anti-Spike antibody increased more from day 14 to day 28 in controls than in the COVID-19 group ($\Delta 57.1 \pm 8.7$ $\mu\text{g/ml}$ vs 27.8 ± 9.1 $\mu\text{g/ml}$, respectively, $p=0.005$).

Individual responses to the vaccine for all subjects are shown in **Figure 2**. At day 14, anti-Spike antibody levels were maximum in 27% of the COVID 19 group and 0% of the controls ($p<0.02$ by Chi square - Fishers Exact test). Between days 14 and 56, antibody levels increased still further in 100% of controls but only 73% of the COVID-19 group ($p<0.004$ by Chi square - Fishers Exact test).

Serum Neutralization Activity

The neutralization assay was performed post vaccination when anti-spike antibody levels in the two groups differed to the greatest extent (day 14) or reached a peak (day 28) (**Figures 3A and 3B**). Neutralizing activity was present in both groups at both time points. However, at day 14, neutralizing activity was significantly greater ($p < 0.001$ by 2-way ANOVA) in the COVID-19 group (mean $\text{IC}_{50} = 3.6 \times 10^{-4}$) than in the control group (mean $\text{IC}_{50} = 1 \times 10^{-2}$) (**Figure 3A**).

In contrast, neutralizing activity at day 28 (**Figure 3B**) was similar in the two groups ($p > 0.11$ by 2-way ANOVA) due to marked increases in neutralization activity in the control subjects (i.e., mean $IC_{50} = 3.0 \times 10^{-4}$). Neutralizing activity increased only slightly in the COVID-19 group at this time point (mean $IC_{50} = 5.0 \times 10^{-4}$).

DISCUSSION

This study compared the humoral immune responses to the COVID-19 mRNA vaccine, BNT162b2, in health care workers with prior SARS-CoV-2 infection / COVID-19 and SARS-CoV-2 naïve subjects (control). Subjects were studied longitudinally before and for 56 days post first dose of vaccine. This design allowed the time course and maximum response to be assessed in each subject.

Well accepted methods were utilized to assess anti-Spike IgG antibody levels and serum neutralization activity in response to the recommended two dose regimen of BNT162b2. IgG antibodies against the Spike protein RBD region were measured since the majority of neutralizing antibodies target this region of the protein^{26,27}. However, since antibodies to other Spike epitopes may also have neutralizing activity, we assessed global humoral immunity to SARS-CoV-2 using a well-accepted, lenti pseudovirus neutralization assay^{9,17,24,25}.

Our study demonstrates that anti-Spike RBD IgG antibody levels and serum neutralizing activity increase more rapidly in subjects who had prior SARS-Cov-2 infection - COVID-19 disease after the Pfizer BNT162b2 vaccine than in SARS-CoV-2 naïve subjects. Specifically, at day 14, anti-Spike IgG level in COVID-19 was ~15 fold greater (i.e., 39 vs 2.5 $\mu\text{g}/\text{mL}$) and serum neutralizing activity was ~28 fold greater (i.e., ~1:2,780 vs ~1:100 dilution) than in the control group. Anti-Spike antibody and neutralizing activity were not different across the two groups at later time points.

These data support and extend brief reports by others comparing the time course of the IgG Spike antibody response to the first dose of a COVID-19 mRNA vaccine in SARS-CoV-2 infected and naïve subjects using a cross-sectional design²⁰⁻²³.

After achieving a peak at 28 days, anti-Spike antibody levels fell in most subjects in both groups. A reduction from a peak to a lower, more sustained IgG antibody level is generally the case with most vaccines²⁸. The present study did not define this sustainable level or its duration. Additional time points will be needed in this regard, likely over several years given the robustness of the vaccine response.

The COVID and control groups were well matched for age and gender. This of importance since age and gender are important variables which determine immune responses to many vaccines^{28,29}. For example, females have greater vaccines responses than males while the elderly manifest lower responses than the young^{28,29}. Accordingly, differences in vaccine responses observed in the 2 groups in this study are not explainable by differences in gender or age.

Rather subjects with COVID-19 appear to have had an anamnestic response to the first dose of the vaccine as a result of long duration immune memory^{7,11}. In fact, most SARS-CoV-2 infected individuals maintain robust levels of circulating memory B-cells, T follicular helper cells and CD4 and CD8 Th1-cells for at least 8 months post infection¹¹. Our observation that subjects with COVID-19 responded rapidly and robustly to the first dose of vaccine more than 7 months after COVID is and demonstrates a functional correlate to the findings of long duration memory B and T cells after SARS-CoV-2 infection, consistent with B memory cell biology^{11,30,31}.

The COVID-19 group was comprised chiefly of subjects with mild disease. None were hospitalized. This is of interest since humoral and immune responses attend to be less in subjects with milder disease than those with

severe disease^{8,32}. Accordingly, it seems possible that subjects with a history of more severe COVID-19 disease may show greater responses to vaccination than the SARS-CoV-2 naïve group in this present study.

Of importance, in our study, the response to the second dose of the vaccine was attenuated in the COVID-19 group compared to the control group. In fact, antibody levels did not increase after day 14 in 27% of the COVID group. One implication of this finding is that subjects with a prior history of SARS-CoV-2 infection or COVID-19 may not need the second dose. In essence, the prior bout of COVID-19 may have provided sufficient immune stimulation that the first dose of vaccine elicited a near maximal response.

The possibility that a single dose of vaccine is as efficacious as the 2 dose regimen in achieving immune protection in subjects with prior SARS-CoV-2 infection / COVID-19 has important public health implications. It affords an opportunity to conserve approximately 30 million doses in the US alone which could be used for others. This issue, however, will require a proper controlled trial in SAR-CoV-2-infected individuals in which the protection against re-infection and COVID-19 achieved with 1 vaccine dose is compared with the current 2 dose regimen.

In conclusion, the present study indicates that subjects with a prior history of generally mild COVID-19 disease respond more quickly to a COVID mRNA vaccine and achieve a higher level of humoral immunity after a single dose than do SARS-CoV-2 naïve individuals. These data have important public health implications in terms of vaccine management.

ACKNOWLEDGEMENTS

The authors are grateful to the entire community of Temple University Hospital physicians, nurses, technicians and other health care workers who contributed a considerable amount of their time over many months in support of this project. Their altruism and courage in the care of our patients with COVID-19 was a source of inspiration to us all.

We also wish to thank BEI Resources whose repeated, timely shipments of crucial reagents allowed us to carry out the assays on which this project was based.

The following reagents were obtained through BEI Resources, NIAID, NIH: Monoclonal Anti-SARS Coronavirus Recombinant Human IgG1, Clone CR3022 (produced in *Nicotiana benthamiana*), NR-52392; SARS-Related Coronavirus 2, Wuhan-Hu-1 Spike-Pseudotyped Lentiviral Kit, NR-52948; Human Embryonic Kidney Cells (HEK-293T) Expressing Human Angiotensin-Converting Enzyme 2, HEK-293T-hACE2 Cell Line, NR-52511; Monoclonal Anti-SARS-Related Coronavirus 2 Spike Glycoprotein RBD-mFc Fusion Protein (produced in vitro), NR-53795.

The following reagent was produced under HHSN272201400008C and obtained through BEI Resources, NIAID, NIH: Spike Glycoprotein Receptor Binding Domain (RBD) from SARS-Related Coronavirus 2, Wuhan-Hu-1 with C-Terminal Histidine Tag, Recombinant from HEK293F Cells, NR-52366.

Table 1: Subject Demographics and COVID-19 Subject Characteristics

| | COVID-19 (n=24) | Non-COVID-19 (n=25) | p value |
|---|----------------------------|--------------------------------|--------------------|
| Age (years) | | | |
| Mean \pm SE | 46 \pm 3 | 45 \pm 2 | >0.90 |
| Min-Max | (29-72) | (22-70) | |
| Gender % (n) | | | |
| Males | 50 (12) | 56 (14) | >0.90 |
| Females | 50 (12) | 44 (11) | |
| Ethnicity % (n) | | | |
| Caucasian | 83 (20) | 80 (20) | NA |
| Asian | 13 (3) | 12 (3) | |
| African American | 4 (1) | 8 (2) | |
| Profession % (n) | | | |
| Physician | 42 (10) | 68 (17) | NA |
| Nurse | 54 (13) | 20 (5) | |
| Other | 4 (1) | 12 (3) | |
| <u>COVID-19 Subjects</u> | | | |
| Positive PCR, % (n) | | | 75 (18) |
| Symptoms, % (n) | | | |
| None | | | 13 (3) |
| Malaise | | | 58 (14) |
| Myalgia | | | 58 (14) |
| Headache | | | 46 (11) |
| Cough | | | 42 (10) |
| SOB | | | 38 (9) |
| Fever | | | 38 (9) |
| Anosmia | | | 33 (8) |
| Ageusia | | | 29 (7) |
| Sinus Congestion | | | 25 (6) |
| Chills | | | 17 (4) |
| Diarrhea | | | 17 (4) |
| Sore Throat | | | 13 (3) |
| Pneumonia | | | 4 (1) |
| Hospitalization | | | 0 (0) |
| Post symptom onset-vaccine interval (days) | | | |
| Mean \pm 1SE: | | | 200 \pm 18 |
| Range: | | | (25-277) |

FIGURE LEGENDS

Figure 1. Group (mean \pm 1SE) anti-Spike RBD IgG antibody responses to the BNT162b2 vaccine in the COVID (●) and control (i.e., SARS-CoV-2 naïve) subjects (●). Arrows denote time points of vaccinations 1 and 2. Note that the time course of anti-Spike RBD IgG antibody levels between COVID-19 and control groups were significantly different by 2 way repeated measures ANOVA ($p < 0.02$). Differences were most obvious at day 14 (asterisks ** denote $p < 0.01$). For COVID-19, sample size at each study time point was: day 14 (n=19), day 28 (n=24), day 42 (n=23) and day 56 (n=24). For control subjects, sample size at each time point was: day 14 (n=21), day 28 (n=25), day 42 (n=24) and day 56 (n=25).

Figure 2. Time course of anti-Spike RBD IgG antibody responses to the BNT162b2 vaccine for each individual subject. COVID-19 subjects (n=24) are shown with red symbols (●). Control subjects (n=25) are shown with black symbols (●). Subjects from both groups have been divided randomly into either the upper or lower panel for greater clarity in the data.

Figure 3. Serum neutralizing activity post-BNT162b2 vaccine in COVID-19 (● n=15) and control subjects (● n=16) using a SARS-CoV-2-pseudotyped lentivirus. Data from Day 14 and Day 42 are shown. Y-axis shows pseudovirus uptake assessed from luciferase activity (RLU). The 100% control value indicates maximal virus uptake assessed at a serum dilution of 1:10,000. Reductions in RLU indicate inhibition of virus entry as serum concentration increases (X-axis). At Day 14 (**Panel A**), the 2 curves were significantly different ($p < 0.001$ by 2-way ANOVA) and neutralizing activity assessed as the IC_{50} was markedly greater in the COVID-19 group ($IC_{50} = 3.6 \times 10^{-4}$) than in the control group ($IC_{50} = 1 \times 10^{-2}$). In contrast, at Day 42 (**Panel B**), the curves were not significantly different ($p = 0.110$ by 2-way ANOVA) and the IC_{50} was similar between the COVID-19 ($IC_{50} = 5 \times 10^{-4}$) and control group ($IC_{50} = 3 \times 10^{-4}$). Data are group mean \pm SEM of COVID-19 and control subjects in each panel. RLU = Relative Light Units.

Figure 1.

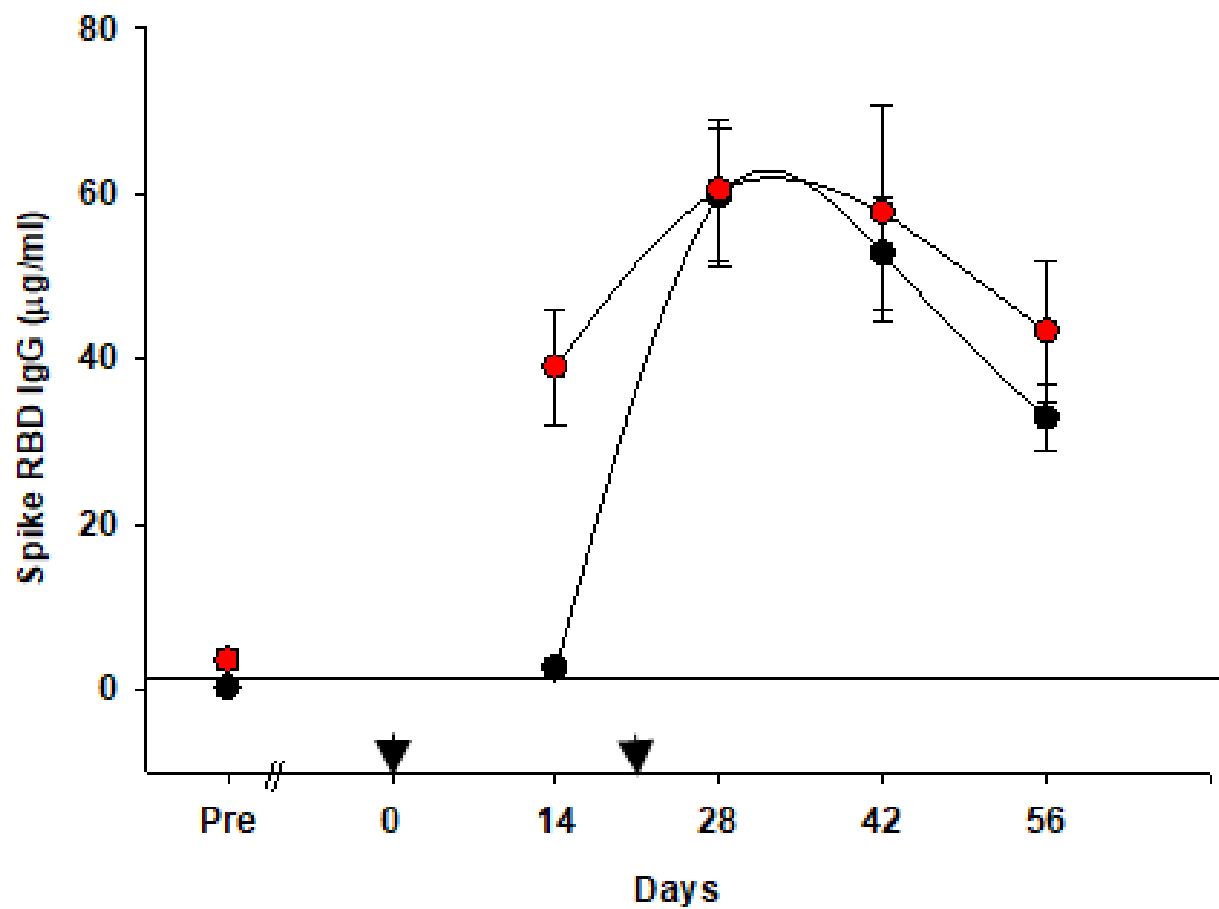


Figure 2.

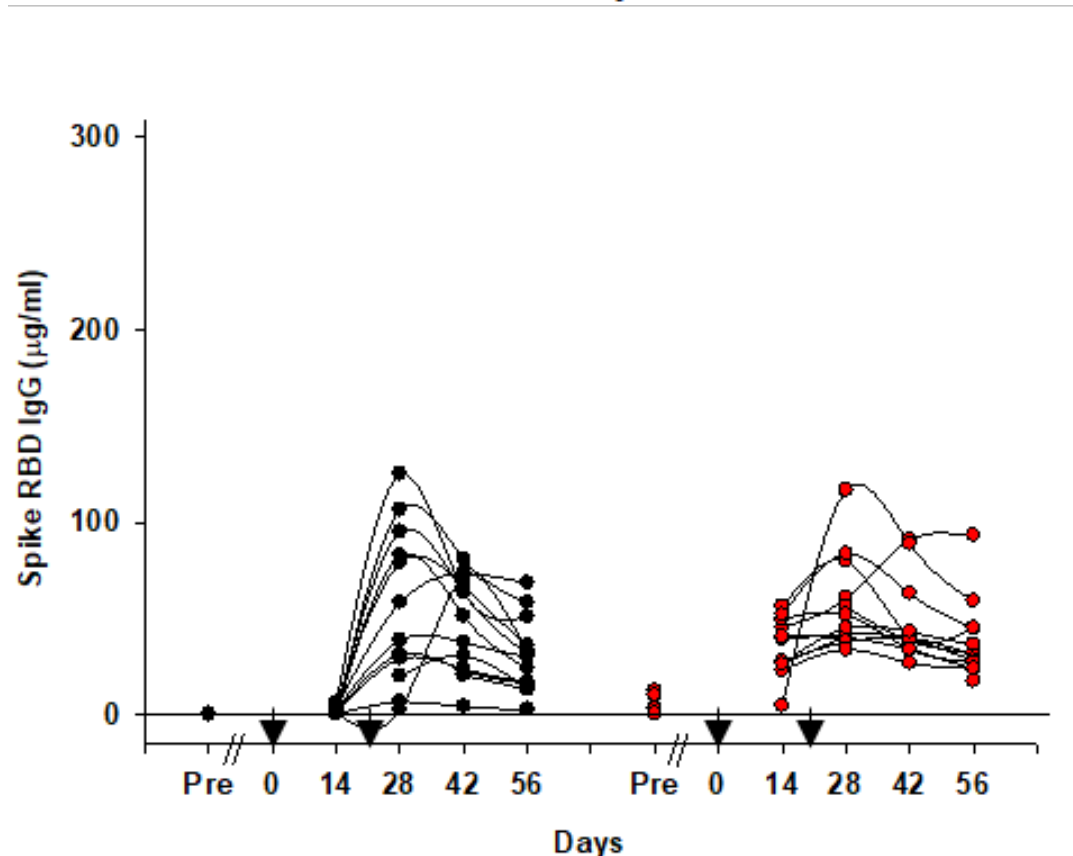
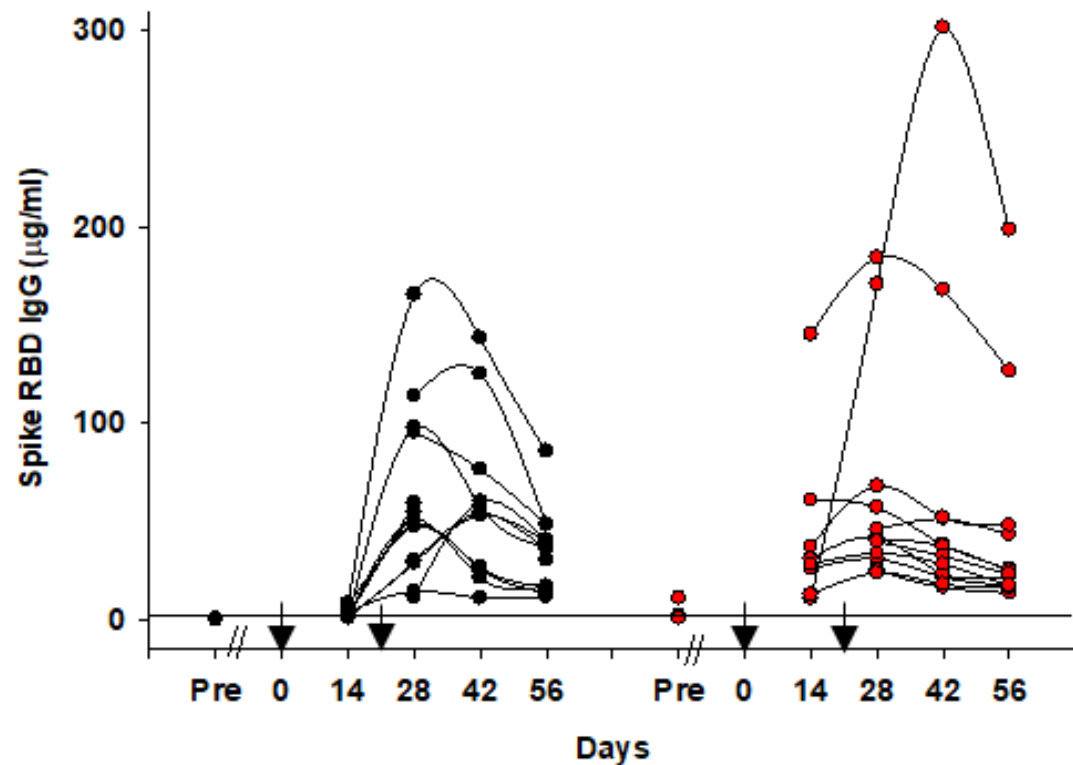
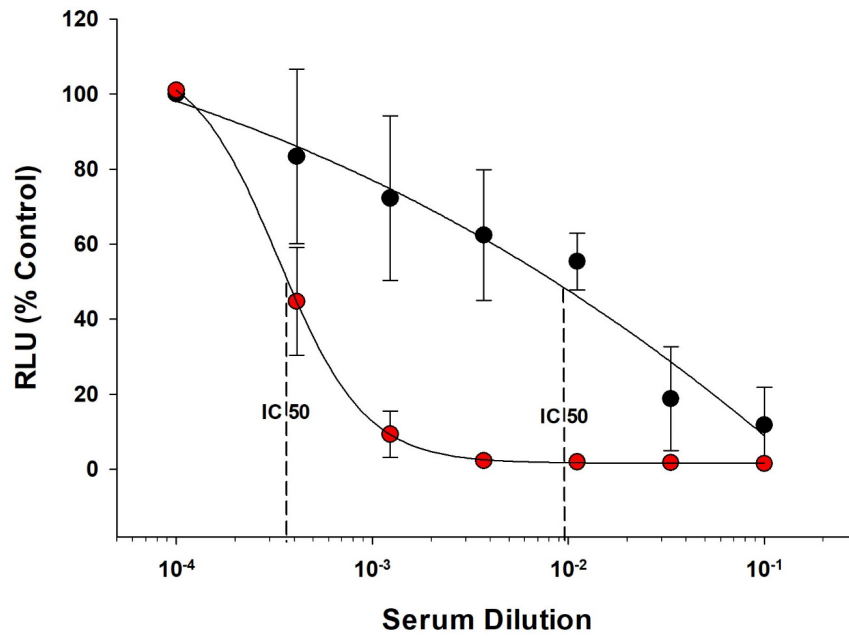
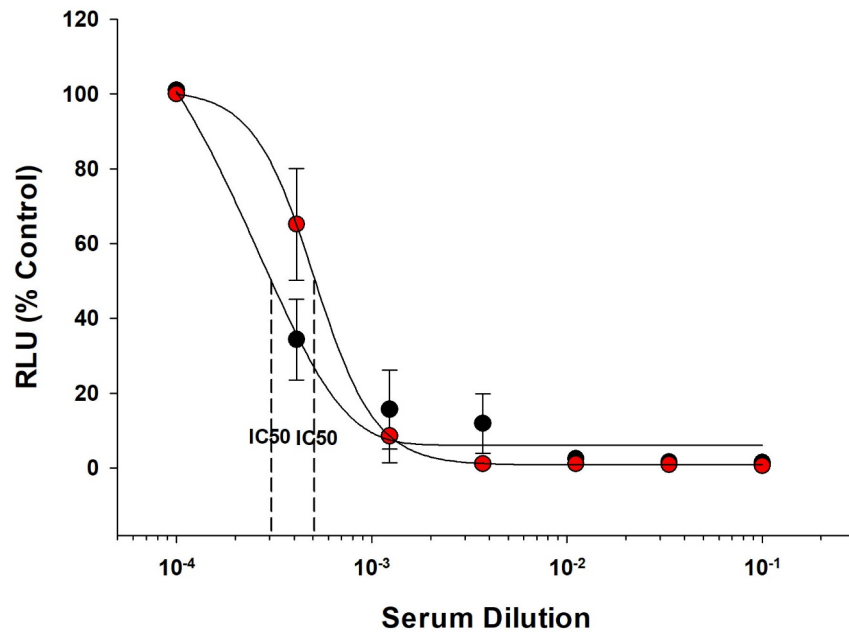


Figure 3.

Panel A



Panel B



REFERENCES

1. Addetia A, Crawford KHD, Dingens A, et al. Neutralizing Antibodies Correlate with Protection from SARS-CoV-2 in Humans during a Fishery Vessel Outbreak with a High Attack Rate. *J Clin Microbiol* 2020;58:e02107-20.
2. Chandrashekar A, Liu J, Martinot AJ, et al. SARS-CoV-2 infection protects against rechallenge in rhesus macaques. *Science* 2020;369:812-7.
3. Dagan N, Barda N, Kepten E, et al. BNT162b2 mRNA Covid-19 Vaccine in a Nationwide Mass Vaccination Setting. *N Engl J Med* 2021; Feb 24.doi: 10.1056/NEJMoa2101765.
4. Lumley SF, O'Donnell D, Stoesser NE, et al. Antibody Status and Incidence of SARS-CoV-2 Infection in Health Care Workers. *N Engl J Med* 2021;384:533-40.
5. Polack FP, Thomas SJ, Kitchin N, et al. Safety and Efficacy of the BNT162b2 mRNA Covid-19 Vaccine. *N Engl J Med* 2020;383:2603-15.
6. Yu X, Tsibane T, McGraw PA, et al. Neutralizing antibodies derived from the B cells of 1918 influenza pandemic survivors. *Nature* 2008;455:532-6.
7. Le Bert N, Tan AT, Kunasegaran K, et al. SARS-CoV-2-specific T cell immunity in cases of COVID-19 and SARS, and uninfected controls. *Nature* 2020;584:457-62.
8. Long QX, Liu BZ, Deng HJ, et al. Antibody responses to SARS-CoV-2 in patients with COVID-19. *Nat Med* 2020;26:845-8.
9. Wajnberg A, Amanat F, Firpo A, et al. Robust neutralizing antibodies to SARS-CoV-2 infection persist for months. *Science* 2020;370:1227-30.
10. Davies JR, Grilli EA. Natural or vaccine-induced antibody as a predictor of immunity in the face of natural challenge with influenza viruses. *Epidemiol Infect* 1989;102:325-33.
11. Dan JM, Mateus J, Kato Y, et al. Immunological memory to SARS-CoV-2 assessed for up to 8 months after infection. *Science* 2021;371:4063.
12. Baden LR, El Sahly HM, Essink B, et al. Efficacy and Safety of the mRNA-1273 SARS-CoV-2 Vaccine. *N Engl J Med* 2021;384:403-16.
13. Anderson EJ, Roupheal NG, Widge AT, et al. Safety and Immunogenicity of SARS-CoV-2 mRNA-1273 Vaccine in Older Adults. *N Engl J Med* 2020;383:2427-38.
14. Walsh EE, Frenck RW, Jr., Falsey AR, et al. Safety and Immunogenicity of Two RNA-Based Covid-19 Vaccine Candidates. *N Engl J Med* 2020;383:2439-50.
15. Widge AT, Roupheal NG, Jackson LA, et al. Durability of Responses after SARS-CoV-2 mRNA-1273 Vaccination. *N Engl J Med* 2021;384:80-2.
16. McMahan K, Yu J, Mercado NB, et al. Correlates of protection against SARS-CoV-2 in rhesus macaques. *Nature* 2021;590:630-4.
17. Bartsch YC, Fischinger S, Siddiqui SM, et al. Discrete SARS-CoV-2 antibody titers track with functional humoral stability. *Nat Commun* 2021;12:1018.

18. Baumgarth N, Nikolich-Zugich J, Lee FE, Bhattacharya D. Antibody Responses to SARS-CoV-2: Let's Stick to Known Knowns. *J Immunol* 2020;205:2342-50.
19. CDC. Interim Clinical Considerations for mRNA COVID-19 Vaccines Currently Authorized in the United States. <https://www.cdc.gov/vaccines/covid-19/info-by-product/clinical-considerations.html>.
20. Krammer F, Srivastava K, Alshammary H, et al. Antibody Responses in Seropositive Persons after a Single Dose of SARS-CoV-2 mRNA Vaccine. *N Engl J Med* 2021; Mar 10.doi: 10.1056/NEJMc2101667.
21. Manisty C, Otter AD, Treibel TA, et al. Antibody response to first BNT162b2 dose in previously SARS-CoV-2-infected individuals. *Lancet* 2021:00501-8.
22. Prendecki M, Clarke C, Brown J, et al. Effect of previous SARS-CoV-2 infection on humoral and T-cell responses to single-dose BNT162b2 vaccine. *Lancet* 2021:00502.
23. Velasco M, Galán MI, Casas ML, et al. Impact of previous COVID-19 on immune response after a single dose of BNT162b2 SARS-CoV-2 vaccine. *medRxiv* 2021:2021.03.08.21253065.
24. Carnell G, Grehan, K., Ferrara, F., Molesti, E. and Temperton, N. An Optimized Method for the Production Using PEI, Titration and Neutralization of SARS-CoV Spike Luciferase Pseudotypes. *Bio-protocol* 2017;7:e2514.
25. Crawford KHD, Eguia R, Dingens AS, et al. Protocol and Reagents for Pseudotyping Lentiviral Particles with SARS-CoV-2 Spike Protein for Neutralization Assays. *Viruses* 2020;12(5):513.doi: 10.3390/v12050513.
26. Baum A, Ajithdoss D, Copin R, et al. REGN-COV2 antibodies prevent and treat SARS-CoV-2 infection in rhesus macaques and hamsters. *Science* 2020;370:1110-5.
27. Hansen J, Baum A, Pascal KE, et al. Studies in humanized mice and convalescent humans yield a SARS-CoV-2 antibody cocktail. *Science* 2020;369:1010-4.
28. Plotkin SA. Vaccines: correlates of vaccine-induced immunity. *Clin Infect Dis* 2008;47:401-9.
29. Klein SL, Jedlicka A, Pekosz A. The Xs and Y of immune responses to viral vaccines. *Lancet Infect Dis* 2010;10:338-49.
30. Inoue T, Moran I, Shinnakasu R, Phan TG, Kurosaki T. Generation of memory B cells and their reactivation. *Immunol Rev* 2018;283:138-49.
31. Weisel F, Shlomchik M. Memory B Cells of Mice and Humans. *Annu Rev Immunol* 2017;35:255-84.
32. Wang Y, Zhang L, Sang L, et al. Kinetics of viral load and antibody response in relation to COVID-19 severity. *J Clin Invest* 2020;130:5235-44.