

Chronic hepatitis B infection is causally associated with extrahepatic cancers: a Mendelian randomization study

Abram Bunya Kamiza ^{1,*}, Segun Fatumo ^{2,3}, Mwiza Gideon Singini ^{4,5}, Chih-Ching Yeh ^{6,7,8},
Tinashe Chikowore ^{1,9}

¹ Sydney Brenner Institute for Molecular Bioscience, Faculty of Health Sciences, University of the Witwatersrand, Johannesburg, South Africa.

² The African Computational genomics (TACG) Research group, MRC/UVRI and LSHTM, Entebbe, Uganda.

³ Department of Non-communicable Disease Epidemiology (NCDE), London School of Hygiene and Tropical Medicine London, UK.

⁴ National Cancer Registry, National Health Laboratory Service, Johannesburg, 2131, South Africa.

⁵ School of Public Health, Faculty of Health Sciences, University of the Witwatersrand, Johannesburg, South Africa

⁶ School of Public Health, College of Public Health, Taipei Medical University, Taipei, Taiwan.

⁷ Department of Public Health, China Medical University, Taichung, Taiwan.

⁸ Cancer Centre, Wan Fang Hospital, Taipei Medical University, Taipei, Taiwan

⁹ MRC/Wits Developmental Pathways for Health Research Unit, Department of Paediatrics, Faculty of Health Sciences, University of the Witwatersrand, Johannesburg, South Africa.

***Correspondence:** Abram Bunya Kamiza, PhD.

Sydney Brenner Institute for Molecular Bioscience, University of the Witwatersrand,

9 Jubilee Road,

Johannesburg,

South Africa,

Tel: +27(0)117171000

E-mail: abramkamiza@gmail.com

Abstract

Overwhelming evidence suggests that chronic hepatitis infection is associated with extrahepatic cancers. However, uncertainty persists about the causal role of chronic hepatitis infection on extrahepatic cancers, as much of the current evidence originates from observational studies which are prone to confounding. Herein we performed two-sample Mendelian randomization (MR) to examine the causal associations between chronic hepatitis infection and extrahepatic cancers. Genetic variants associated with chronic hepatitis B virus (HBV) infection and chronic hepatitis C virus (HCV) infection were identified from a genome-wide association study and used as instrumental variables in our analysis. Summary level data for cancer of the biliary tract, cervix, colorectum, endometrium, esophagus, gastric, liver, lung, ovary and pancreas were obtained from the Biobank Japan. Using the inverse variance weighted methods, we found chronic HBV infection to be causally associated with gastric cancer (odds ratio [OR] = 1.19 and 95% confidence interval [CI] = 1.13-1.25, P-value = 0.001) and lung cancer (OR = 1.21, 95% CI = 1.14-1.28, P-value = 0.001). Moreover, chronic HBV infection (OR = 1.34, 95% CI = 1.17-1.53, P-value = 0.007) and chronic HCV infection (OR = 2.75, 95% CI = 2.21-3.42, P-value = 0.0008) were all causally associated with liver cancer, supporting a well-established association between chronic hepatitis infection and liver cancer. In conclusions, our MR findings revealed that chronic HBV infection is causally associated with extrahepatic cancers including gastric and lung cancers.

Keywords: HBV, HCV, cancer, Mendelian randomization, genetic, SNPs

Introduction

Globally about 360 million people are chronically infected with hepatitis B virus (HBV) and hepatitis C virus (HCV) [1,2]. Overwhelming evidence indicates that chronic hepatitis infection is the risk factor for liver cancer [3–5]. Further evidence suggests that chronic hepatitis infection is associated with extrahepatic cancers [6–10]. Moreover, our previous analysis revealed that chronic HBV infection is associated with cancer of the liver, pancreas, kidney, colorectum, ovary, non-Hodgkin's lymphoma, gallbladder and extrahepatic bile duct whilst chronic HCV infection was associated with cancer of the liver, ovary, non-Hodgkin's lymphoma, gallbladder and extrahepatic bile duct [11]. However, further evidence suggests that chronic hepatitis infection is not causally associated with extrahepatic cancers [12]. Uncertainty persists about the causal role of chronic hepatitis infection on extrahepatic cancers as much of the current evidence originates from observational studies [6–11], which are prone to confounding. Hence the causal nature of these findings needs further assessment using a different approach.

Mendelian randomisation (MR) is an analytical approach that uses genetic variants as instrumental variables to infer the causality of exposure to an outcome [13]. The MR is based on the idea that the inheritance of alleles are independent [14], thus suggesting that the exposure predicted by the genetic variants are independent of other exposures, thereby reducing biases commonly observed in observational studies. Unlike observational studies, MR analyses are not confounded by some unmeasured factors owing to the random independent segregation of alleles during meiosis [14,15]. Besides, MR analyses are not prone to reverse causation as genetic variants are fixed and do not change over time [16]. This makes MR an ideal approach for inferring causality of an exposure on an outcome. However, for MR estimates to be valid, three main assumptions must be met (i) instrumental variables must be strongly associated with the exposure (ii) instrument variables are not associated with other confounders of the exposure and outcome association and (iii) there is no horizontal pleiotropy between the instrument variables and outcome variable [17].

Here we performed a two-sample MR to examine the causal associations between chronic hepatitis infection and risk of extrahepatic cancers using genetic variants associated with chronic HBV infection and chronic HCV infection as instrumental variables. Genetic variants associated with chronic HBV infection and chronic HCV infection were identified from a recent genome-wide association study (GWAS) [18]. We examined the causal associations of genetic variants with risks of the biliary tract, cervical, colorectal, endometrial, esophageal, gastric, liver, lung, ovarian and pancreatic cancers.

Results

We identified six and four conditionally independent single nucleotide polymorphisms (SNPs) that were associated with chronic HBV infection and chronic HCV infection, respectively from the Biobank Japan (BBJ) (Table.S1). We defined the SNP to be independent if it were one megabase away from the lead SNP. SNPs with the weakest association with chronic hepatitis infection were replaced with suitable proxies that were strongly associated with chronic hepatitis infection.

Chronic HBV infection MR estimates

The IVW was our primary MR method in the absence of horizontal pleiotropy with MR-Egger regression intercept P-value > 0.05 (Table.S2). Firstly, we evaluated whether chronic HBV infection is causally associated with extrahepatic cancers. We found chronic HBV infection to be causally associated with a 34% higher risk of liver cancer, odds ratio (OR) = 1.34 and 95% confidence interval (CI) = 1.17-1.53, P-value = 0.007 (Table 1, Fig.1G). Additionally, chronic HBV infection was causally associated with extrahepatic cancers including gastric cancer (OR = 1.19, 95% CI = 1.13-1.25, P-value = 0.001, Fig.1F) and lung cancer (OR = 1.21, 95%CI = 1.14-1.28, P-value = 0.001, Fig.1H). Moreover, we found chronic HBV infection to be positively associated with esophageal cancer (OR = 1.12, 95% CI = 1.01-1.25, P-value = 0.039), however after correction for multiple testing our results were not statistically significant at P-value \leq 0.0083 (Table 1).

Chronic HCV infection MR estimates

For this analysis, we only found chronic HCV infection to be causally associated with liver cancer (OR = 2.75, 95%CI = 2.21-3.42, P-value = 0.0008, Fig.2G). Besides IVW method, simple median method (OR = 2.83, 95%CI = 2.06-3.88, P-value = 0.0009), weighted median method (OR = 2.61, 95%CI = 1.96-3.49, P-value = 0.001) and MR-Egger method (OR = 2.24, 95%CI = 1.33-3.75, P-value = 0.002) all show consistent causal association between chronic HCV infection and liver cancer (Table 1).

Sensitivity analyses

We performed sensitivity tests using MR-PRESSO and multivariable MR analysis. We found no evidence of horizontal pleiotropy for chronic HBV infection with all site-specific cancers with P-values >0.05 for the MR-Egger regression intercept approach (Table.S2). However, we found evidence of horizontal pleiotropy for chronic HCV infection with colorectal cancer and ovarian cancer with MR-Egger regression intercepts P-value = 0.012 and 0.030, respectively, (Table.S2). Moreover, we found the presence of heterogeneity for the causal association of chronic HBV infection with cervical cancer ($I^2 = 66.2\%$, $P_{\text{het}} = 0.011$) and also with liver cancer ($I^2 = 60.9\%$, $P_{\text{het}} = 0.025$, Table.S2). For chronic HCV infection, we found evidence for high heterogeneity for colorectal cancer ($I^2 = 62.4\%$, $P_{\text{het}} = 0.046$) and also in ovarian cancer ($I^2 = 66.5\%$, $P_{\text{het}} = 0.029$, Table.S2).

We then performed a sensitivity analysis and our results revealed rs116113866 as a genetic instrument driving the null association between chronic HBV infection and cervical cancer (OR = 1.04, 95%CI = 0.98-1.10, P-value = 0.209, Fig.1B). However, when we performed MR-PRESSO, which identify and remove outlier instrumental variables in MR analysis. Our outlier corrected MR-PRESSO for chronic HBV infection was causally associated with cervical cancer (OR = 1.30, 95%CI = 1.12-1.51, P-value = 0.0263). However, this finding was not statistically significant after Bonferroni corrections. Interestingly, for chronic HBV infection and liver cancer, our MR-PRESSO analysis was similar to the IVW method regardless of the presence of heterogeneity, which was corrected by using the random IVW method. Since there were heterogeneity and horizontal pleiotropy for chronic HCV infection with colorectal cancer, and ovarian cancer (Table.S2), we, therefore, used the weighted median method for MR analysis, which gives valid estimates under the presence of horizontal pleiotropy when up to 50% of the instruments variables are valid. However, our weighted median MR analysis for colorectal cancer (OR = 1.09, 95%CI = 0.94-1.27, P-value = 0.266) and for ovarian cancer (OR = 1.18, 95%CI = 0.75-1.87, P-value = 0.474) were not statistically significant (Table 1).

We further performed the multivariable MR analyses adjusting for chronic HCV infection and our results were largely unchanged from our main IVW results. Similarly, adjusting for chronic HBV infection did not attenuate the statistically significant results of chronic HCV infection and liver cancer (Table.S3).

Discussion

Our MR study was set out to investigate whether chronic hepatitis infection was causally associated with extrahepatic cancers. We found chronic HBV infection to be causally associated with extrahepatic cancers including gastric and lung cancer. Additionally, chronic HBV infection and chronic HCV infection were all causally associated with liver cancer, supporting the overwhelming evidence from observational studies that chronic hepatitis infection is a risk factor for liver cancer [3–6].

Using the IVW method, we found chronic HBV infection to be causally associated with gastric cancer, corroborating previous observational studies [7,19]. However, our previous analysis using the Taiwan National Health Insurance datasets failed to find any significant association between chronic HBV infection and gastric cancer [11]. In this MR analysis, only chronic HBV infection was significantly associated with gastric cancer suggesting that HBV may play a crucial role in tumorigenesis of gastric cancer. Although we found chronic HCV infection not to be significantly associated with gastric cancer (OR =1.11, 95% CI = 0.98-1.24, P-value = 0.093), the odds of developing gastric cancer was high among patients with chronic HCV infection (Table 1). Observational studies reported a high risk of developing lung cancer among patients with chronic HBV infection [6,20], supporting our MR analysis that chronic HBV infection is a risk factor for lung cancer. HBV a partially circular double-stranded DNA virus encode HBV protein X, a transcriptional coactivator that plays a pivotal role in tumorigenesis by modulating key regulators of the apoptosis, interfering with the DNA repair pathways and tumour suppressor genes [21].

Observational studies have further shown that chronic HBV infection increases the risk of the biliary tract, esophageal, endometrial, pancreatic, and colorectal cancer [6,7,9,11,20]. Although we failed to find significant associations between chronic HBV infection and these site-specific cancers in the current MR analysis, our ORs were >1 for these site-specific cancers (Table 1), suggesting that chronic HBV infection may be a risk

factor for these site-specific cancers. Surprisingly, we found a nonsignificant inverse association between chronic HBV infection and ovarian cancer, which is contrary to our previous analysis in Han Chinese patients [11]. This finding needs further validation by future studies.

Chronic HCV infection was causally associated with liver cancer, supporting the overwhelming evidence of a well-known causal association between chronic HCV infection and liver cancer from previous observational studies [3–5]. However, our MR analysis failed to find any significant association between chronic HCV infection and extrahepatic cancers, which is contrary to our previous analysis indicating that chronic HCV infection is a risk factor for ovarian, non-Hodgkin's lymphoma, gallbladder and extrahepatic bile duct cancer [11]. In this analysis, we did not have summary level data for non-Hodgkin's lymphoma, gallbladder and extrahepatic bile duct cancer, limiting our ability to assess this association further. Nevertheless, chronic HCV infection was not significantly associated with ovarian cancer, but our OR was 1.19 thus suggesting a possible positive association between chronic HCV infection and ovarian cancer which requires further follow up. Surprisingly, we also found a nonsignificant inverse association between chronic HCV infection with the biliary tract and endometrial cancer, suggesting that chronic HCV infection may not be a risk factor for these site-specific cancers.

The main strengths of this study are the use of MR design, which eliminates bias due to confounding and reverse causality. The use of multiple instrumental variables allowed us to perform sensitivity analyses to identify and adjust for horizontal pleiotropy. Another strength is the use of a homogenous population which minimises heterogeneity commonly observed when individuals of different ancestry population are used in genetic studies. However, our study had some limitations including a lack of power to find a significant association between chronic hepatitis infection and certain site-specific cancers. Our analyses included individuals of East Asian descent where there is a high prevalence of chronic hepatitis infection and therefore our results might not be generalizable to other

ancestry populations. Another limitation is the possibility of having individuals overlapping in the exposure and outcome datasets, which might introduce some bias in our MR estimation. Nevertheless, we performed a sensitivity analysis using four different approaches and our results were consistent and robust.

In conclusion, our results support a well-established relationship between chronic hepatitis infection and liver cancer and suggest that chronic HBV infection may also be a risk factor for gastric cancer and lung cancer. However, we found no evidence for the causal association between chronic HCV infection and extrahepatic cancers and future studies should investigate this further.

Methods

Exposure data

Instrumental variables for chronic hepatitis infection were selected from a recent large GWAS with more than 200,000 individuals of East Asian descent in Japan [18]. A total of 1,394 chronic HBV patients and 5,794 chronic HCV patients were used in the analysis. Independent single nucleotide polymorphisms (SNP) were defined when it was one megabase away from the lead SNP. A total of six and four conditionally independent SNPs were identified to be associated with chronic HBV and chronic HCV infection, respectively (Table.S1), at the genome-wide significance threshold (P -value $< 5 \times 10^{-8}$). SNPs with the weakest association with chronic hepatitis infection and also SNPs that were not available in the outcome datasets were subsequently replaced by suitable proxies. All our genetic instruments were strongly associated with chronic hepatitis infection and detailed information for the genetic variants used in this analysis is provided in Table.S1.

Outcome data

Summary level data for the associations of genetic variants and risks of biliary tract cervical, colorectal, endometrial, esophageal, gastric, liver, lung, ovarian and pancreatic cancers were obtained from GWAS of the East-Asians ancestry [18]. All participants included in the analysis were of East-Asian descent from Japan recruited into the Biobank Japan (BBJ) [22], which was launched in 2003 to provide evidence for the implementation of personalized medicine in Japan by investigating the role of environmental and genetic factors associated with various diseases and phenotypes [22]. The BBJ has over 47 diseases and phenotype including 13 site-specific cancers.

Statistical analysis

Our MR analyses were conducted using the inverse-variance weighted (IVW) method, simple median method, weighted median method, and MR-Egger method. The IVW

was our primary MR method and it provides accurate estimates when there is no heterogeneity and directional pleiotropy between the exposure and outcome [23]. We performed a two-sample MR using the fixed-effect IVW method. The heterogeneity of causal association between chronic hepatitis infection and extrahepatic cancers were investigated by estimating Cochran's Q statistics and I^2 statistics assuming a fixed-effect model [24].

We performed sensitivity analyses to check and correct for the presence of pleiotropy in the causal estimates [23]. We defined the presence of heterogeneity if the Q statistics were significant at a P-value ≤ 0.05 and consequently, we used a random-effect IVW method in our analysis [25]. We assessed the presence of horizontal pleiotropy using MR-Egger regression based on its intercept terms and MR pleiotropy residual sum and outlier (MR-PRESSO) [26,27]. When the MR-Egger intercept deviates from zero or its P-value is statistically significant at P-value ≤ 0.05 it indicates the presence of horizontal pleiotropy in the MR analysis [28] and a different MR method was used to report the results. In this analysis, we used the weighted median method in the presence of heterogeneity and horizontal pleiotropy. The weighted median methods can give valid estimates under the presence of horizontal pleiotropy when up to 50% of the instruments variables are valid [23]. MR-PRESSO was used to detect and remove outlier instrumental variable in the MR analysis [27]. Additionally, we performed a multivariable MR analysis using the fixed-effect IVW method with chronic HBV infection adjusted for chronic HCV infection and chronic HCV infection adjusted for chronic HBV infection [29]. All the statistical analyses were performed using the Mendelian Randomisation [30] and Two Sample MR [31] packages in the R programming language.

Multiple testing correction

We performed multiple testing using the Bonferroni correction method [32]. Since we used six instrumental variables in the MR analysis for chronic HBV infection and extrahepatic cancers and to adjust for multiple testing, our statistically significant P-value was ≤ 0.0083 . For chronic HCV infection, we used four instrumental variables and an

adjusted P-value ≤ 0.0125 was used for determining statistically significant results of the causal association between chronic HCV infection and extrahepatic cancers.

Acknowledgements

The study has been supported by the South African Medical Research Council (with funds received from the South African National Department of Health) and the UK Medical Research Council (with funds from the UK Government's Newton Fund) (MRC-RFA-SHIP 01-2015) for the Evolving Risk Factors for Cancers in African populations study (ERICA-SA). The funders stated therein had no role in the paper design, data collection, data analysis, interpretation and writing of the paper. TC is an international training fellow supported by the Wellcome Trust grant (214205/Z/18/Z). The contents of this publication are solely the responsibility of the authors and do not necessarily represent the official views of the South African Medical Research Council or the South African National Department of Health or the UK Medical Research Council from the UK Government's Newton Fund.

Authors' contributions

Conceptualization, ABK; methodology, ABK, FS, CCY, TC writing-original draft preparation, ABK, FS, TC; writing-review and editing, ABK, FS, MGS, CCY, TC.

Declaration of competing interests

The authors declare no conflict of interest.

Supplementary material

Table S1. Instrumental variables used in the causal analysis of chronic hepatitis infection with various site-specific cancers.

Table S2. Assessment of pleiotropy for the association between chronic hepatitis infections with site-specific cancers.

References

1. Razavi-Shearer, D.; Gamkrelidze, I.; Nguyen, M.H.; Chen, D.-S.; Damme, P.V.; Abbas, Z.; Abdulla, M.; Rached, A.A.; Adda, D.; Aho, I.; et al. Global Prevalence, Treatment, and Prevention of Hepatitis B Virus Infection in 2016: A Modelling Study. *The Lancet Gastroenterology & Hepatology* **2018**, *3*, 383–403, doi:10.1016/S2468-1253(18)30056-6.
2. Hajarizadeh, B.; Grebely, J.; Dore, G.J. Epidemiology and Natural History of HCV Infection. *Nat Rev Gastroenterol Hepatol* **2013**, *10*, 553–562, doi:10.1038/nrgastro.2013.107.
3. Hadziyannis, S.; Tabor, E.; Kaklamani, E.; Tzonou, A.; Stuver, S.; Tassopoulos, N.; Mueller, N.; Trichopoulos, D. A Case-Control Study of Hepatitis B and C Virus Infections in the Etiology of Hepatocellular Carcinoma. *Int J Cancer* **1995**, *60*, 627–631, doi:10.1002/ijc.2910600510.
4. Yu, M.C.; Tong, M.J.; Coursaget, P.; Ross, R.K.; Govindarajan, S.; Henderson, B.E. Prevalence of Hepatitis B and C Viral Markers in Black and White Patients with Hepatocellular Carcinoma in the United States. *J Natl Cancer Inst* **1990**, *82*, 1038–1041, doi:10.1093/jnci/82.12.1038.
5. Perz, J.F.; Armstrong, G.L.; Farrington, L.A.; Hutin, Y.J.F.; Bell, B.P. The Contributions of Hepatitis B Virus and Hepatitis C Virus Infections to Cirrhosis and Primary Liver Cancer Worldwide. *J Hepatol* **2006**, *45*, 529–538, doi:10.1016/j.jhep.2006.05.013.
6. Sundquist, K.; Sundquist, J.; Ji, J. Risk of Hepatocellular Carcinoma and Cancers at Other Sites among Patients Diagnosed with Chronic Hepatitis B Virus Infection in Sweden. *J Med Virol* **2014**, *86*, 18–22, doi:10.1002/jmv.23754.
7. Song, C.; Lv, J.; Liu, Y.; Chen, J.G.; Ge, Z.; Zhu, J.; Dai, J.; Du, L.-B.; Yu, C.; Guo, Y.; et al. Associations Between Hepatitis B Virus Infection and Risk of All Cancer Types. *JAMA Netw Open* **2019**, *2*, doi:10.1001/jamanetworkopen.2019.5718.
8. Amin, J.; Dore, G.J.; O'Connell, D.L.; Bartlett, M.; Tracey, E.; Kaldor, J.M.; Law, M.G. Cancer Incidence in People with Hepatitis B or C Infection: A Large Community-Based Linkage Study. *J Hepatol* **2006**, *45*, 197–203, doi:10.1016/j.jhep.2006.02.014.
9. Tian, T.; Song, C.; Jiang, L.; Dai, J.; Lin, Y.; Xu, X.; Yu, C.; Ge, Z.; Ding, Y.; Wen, Y.; et al. Hepatitis B Virus Infection and the Risk of Cancer among the Chinese Population. *International Journal of Cancer* **2020**, *147*, 3075–3084, doi:https://doi.org/10.1002/ijc.33130.
10. Hong, C.Y.; Sinn, D.H.; Kang, D.; Paik, S.W.; Guallar, E.; Cho, J.; Gwak, G.-Y. Incidence of Extrahepatic Cancers among Individuals with Chronic Hepatitis B or C Virus Infection: A Nationwide Cohort Study. *Journal of Viral Hepatitis* **2020**, *27*, 896–903, doi:https://doi.org/10.1111/jvh.13304.
11. Kamiza, A.B.; Su, F.-H.; Wang, W.-C.; Sung, F.-C.; Chang, S.-N.; Yeh, C.-C. Chronic Hepatitis Infection Is Associated with Extrahepatic Cancer Development: A Nationwide Population-Based Study in Taiwan. *BMC Cancer* **2016**, *16*.
12. Liu, B.; Zhang, Y.; Li, J.; Zhang, W. Hepatitis C Virus and Risk of Extrahepatic Malignancies: A Case-Control Study. *Sci Rep* **2019**, *9*, 19444, doi:10.1038/s41598-019-55249-w.
13. Davey Smith, G.; Hemani, G. Mendelian Randomization: Genetic Anchors for Causal Inference in Epidemiological Studies. *Hum Mol Genet* **2014**, *23*, R89-98, doi:10.1093/hmg/ddu328.
14. Davey Smith, G.; Ebrahim, S. 'Mendelian Randomization': Can Genetic Epidemiology Contribute to Understanding Environmental Determinants of Disease?*. *International Journal of Epidemiology* **2003**, *32*, 1–22, doi:10.1093/ije/dyg070.
15. Lawlor, D.A.; Harbord, R.M.; Sterne, J.A.C.; Timpson, N.; Davey Smith, G. Mendelian Randomization: Using Genes as Instruments for Making Causal Inferences in Epidemiology. *Stat Med* **2008**, *27*, 1133–1163, doi:10.1002/sim.3034.

16. Sekula, P.; Del Greco M, F.; Pattaro, C.; Köttgen, A. Mendelian Randomization as an Approach to Assess Causality Using Observational Data. *J Am Soc Nephrol* **2016**, *27*, 3253–3265, doi:10.1681/ASN.2016010098.
17. Bowden, J.; Davey Smith, G.; Haycock, P.C.; Burgess, S. Consistent Estimation in Mendelian Randomization with Some Invalid Instruments Using a Weighted Median Estimator. *Genet Epidemiol* **2016**, *40*, 304–314, doi:10.1002/gepi.21965.
18. Ishigaki, K.; Akiyama, M.; Kanai, M.; Takahashi, A.; Kawakami, E.; Sugishita, H.; Sakaue, S.; Matoba, N.; Low, S.-K.; Okada, Y.; et al. Large-Scale Genome-Wide Association Study in a Japanese Population Identifies Novel Susceptibility Loci across Different Diseases. *Nature Genetics* **2020**, *52*, 669–679, doi:10.1038/s41588-020-0640-3.
19. Wei, X.-L.; Qiu, M.-Z.; Jin, Y.; Huang, Y.-X.; Wang, R.-Y.; Chen, W.-W.; Wang, D.-S.; Wang, F.; Luo, H.-Y.; Zhang, D.-S.; et al. Hepatitis B Virus Infection Is Associated with Gastric Cancer in China: An Endemic Area of Both Diseases. *Br J Cancer* **2015**, *112*, 1283–1290, doi:10.1038/bjc.2014.406.
20. An, J.; Kim, J.W.; Shim, J.H.; Han, S.; Yu, C.S.; Choe, J.; Lee, D.; Kim, K.M.; Lim, Y.-S.; Chung, Y.-H.; et al. Chronic Hepatitis B Infection and Non-Hepatocellular Cancers: A Hospital Registry-Based, Case-Control Study. *PLOS ONE* **2018**, *13*, e0193232, doi:10.1371/journal.pone.0193232.
21. Gómez-Moreno, A.; Garaigorta, U. Hepatitis B Virus and DNA Damage Response: Interactions and Consequences for the Infection. *Viruses* **2017**, *9*, doi:10.3390/v9100304.
22. Nagai, A.; Hirata, M.; Kamatani, Y.; Muto, K.; Matsuda, K.; Kiyohara, Y.; Ninomiya, T.; Tamakoshi, A.; Yamagata, Z.; Mushiroda, T.; et al. Overview of the BioBank Japan Project: Study Design and Profile. *J Epidemiol* **2017**, *27*, S2–S8, doi:10.1016/j.je.2016.12.005.
23. Burgess, S.; Bowden, J.; Fall, T.; Ingelsson, E.; Thompson, S.G. Sensitivity Analyses for Robust Causal Inference from Mendelian Randomization Analyses with Multiple Genetic Variants. *Epidemiology* **2017**, *28*, 30–42, doi:10.1097/EDE.0000000000000559.
24. Higgins, J.P.T.; Thompson, S.G.; Deeks, J.J.; Altman, D.G. Measuring Inconsistency in Meta-Analyses. *BMJ* **2003**, *327*, 557–560, doi:10.1136/bmj.327.7414.557.
25. Bowden, J.; Del Greco M, F.; Minelli, C.; Davey Smith, G.; Sheehan, N.; Thompson, J. A Framework for the Investigation of Pleiotropy in Two-Sample Summary Data Mendelian Randomization. *Stat Med* **2017**, *36*, 1783–1802, doi:10.1002/sim.7221.
26. Bowden, J.; Davey Smith, G.; Burgess, S. Mendelian Randomization with Invalid Instruments: Effect Estimation and Bias Detection through Egger Regression. *Int J Epidemiol* **2015**, *44*, 512–525, doi:10.1093/ije/dyv080.
27. Verbanck, M.; Chen, C.-Y.; Neale, B.; Do, R. Detection of Widespread Horizontal Pleiotropy in Causal Relationships Inferred from Mendelian Randomization between Complex Traits and Diseases. *Nat Genet* **2018**, *50*, 693–698, doi:10.1038/s41588-018-0099-7.
28. Hemani, G.; Bowden, J.; Davey Smith, G. Evaluating the Potential Role of Pleiotropy in Mendelian Randomization Studies. *Human Molecular Genetics* **2018**, *27*, R195–R208, doi:10.1093/hmg/ddy163.
29. Burgess, S.; Thompson, S.G. Multivariable Mendelian Randomization: The Use of Pleiotropic Genetic Variants to Estimate Causal Effects. *Am J Epidemiol* **2015**, *181*, 251–260, doi:10.1093/aje/kwu283.
30. Yavorska, O.O.; Burgess, S. MendelianRandomization: An R Package for Performing Mendelian Randomization Analyses Using Summarized Data. *Int J Epidemiol* **2017**, *46*, 1734–1739, doi:10.1093/ije/dyx034.
31. Hemani, G.; Zheng, J.; Elsworth, B.; Wade, K.H.; Haberland, V.; Baird, D.; Laurin, C.; Burgess, S.; Bowden, J.; Langdon, R.; et al. The MR-Base Platform Supports Systematic Causal Inference across the Human Phenome. *Elife* **2018**, *7*, doi:10.7554/eLife.34408.

32. Benjamini, Y.; Hochberg, Y. Controlling the False Discovery Rate: A Practical and Powerful Approach to Multiple Testing. *Journal of the Royal Statistical Society. Series B (Methodological)* **1995**, *57*, 289–300.

Table 1. Mendelian randomization estimates for the causal association between chronic hepatitis infections with site-specific cancers.

Cancer sites	IVW method		Simple median method		Weighted median method		MR-Egger method	
	OR (95%CI)	P-value	OR (95%CI)	P-value	OR (95%CI)	P-value	OR (95%CI)	P-value
Hepatitis B								
Biliary tract	1.05 (0.86-1.28)	0.633	1.03 (0.79-1.34)	0.813	1.01 (0.80-1.28)	0.944	1.08 (0.51-2.29)	0.835
Cervix	1.20 (0.93-1.55)	0.153	1.41 (1.14-1.76)	0.002	1.23 (1.02-1.48)	0.032	0.70 (0.27-1.79)	0.455
Colorectum	1.04 (0.98-1.10)	0.209	1.04 (0.98-1.10)	0.212	1.04 (0.98-1.10)	0.170	1.02 (0.80-1.30)	0.865
Endometrium	1.00 (0.87-1.15)	0.969	1.03 (0.88-1.20)	0.741	1.04 (0.90-1.19)	0.632	0.70 (0.44-1.11)	0.129
Esophagus	1.12 (1.01-1.25)	0.039	1.17 (1.02-1.35)	0.027	1.09 (0.97-1.24)	0.162	0.82 (0.56-1.19)	0.297
Gastric	1.19 (1.13-1.25)	0.001	1.23 (1.14-1.33)	0.001	1.21 (1.13-1.29)	0.001	1.12 (0.91-1.38)	0.279
Liver	1.34 (1.17-1.53)	0.007	1.33 (1.17-1.52)	0.007	1.40 (1.25-1.56)	0.002	1.46 (0.83-2.57)	0.190
Lung	1.21 (1.14-1.28)	0.001	1.21 (1.12-1.32)	0.001	1.20 (1.12-1.29)	0.001	0.99 (0.80-1.24)	0.948
Ovary	0.98 (0.86-1.13)	0.807	0.99 (0.83-1.18)	0.887	0.98(0.84-1.15)	0.836	0.94(0.56-1.57)	0.803
Pancreas	1.01 (0.86-1.20)	0.868	1.06 (0.85-1.33)	0.597	1.03(0.84-1.27)	0.786	0.67(0.35-1.28)	0.226
Hepatitis C								
Biliary tract	0.98 (0.59-1.61)	0.924	0.98 (0.53-1.82)	0.959	0.89 (0.50-1.58)	0.685	0.70 (0.22-2.29)	0.561
Cervix	1.24 (0.74-2.06)	0.411	1.58 (0.97-2.58)	0.069	1.15 (0.72-1.84)	0.555	0.80 (0.22-2.97)	0.742
Colorectum	1.08 (0.90-1.29)	0.434	1.18 (0.99-1.41)	0.066	1.09 (0.94-1.27)	0.266	0.79 (0.61-1.03)	0.081
Endometrium	0.92 (0.69-1.23)	0.563	0.90 (0.63-1.30)	0.585	0.96 (0.68-1.34)	0.797	1.15 (0.58-2.29)	0.683
Esophagus	1.11 (0.86-1.43)	0.425	1.22 (0.88-1.68)	0.230	1.12 (0.83-1.52)	0.472	1.03 (0.56-1.89)	0.926
Gastric	1.11 (0.98-1.24)	0.093	1.10 (0.95-1.27)	0.182	1.09 (0.95-1.26)	0.207	1.05 (0.77-1.44)	0.765
Liver	2.75 (2.21-3.42)	0.0008	2.83 (2.06-3.88)	0.0007	2.61 (1.96-3.49)	0.0005	2.24 (1.33-3.75)	0.002
Lung	1.14 (0.94-1.39)	0.188	1.12 (0.90-1.39)	0.297	1.06 (0.88-1.27)	0.566	0.91 (0.58-1.42)	0.674
Ovary	1.19 (0.66-2.15)	0.566	1.39 (0.81-2.39)	0.238	1.18 (0.75-1.87)	0.474	0.47 (0.18-1.19)	0.110
Pancreas	1.09 (0.70-1.68)	0.709	1.08 (0.64-1.84)	0.771	1.06 (0.64-1.75)	0.823	0.90 (0.32-2.53)	0.843

IVW; inverse –variance weighted methods, MR; Mendelian randomization, OR; odds ratio, CI; confidence interval

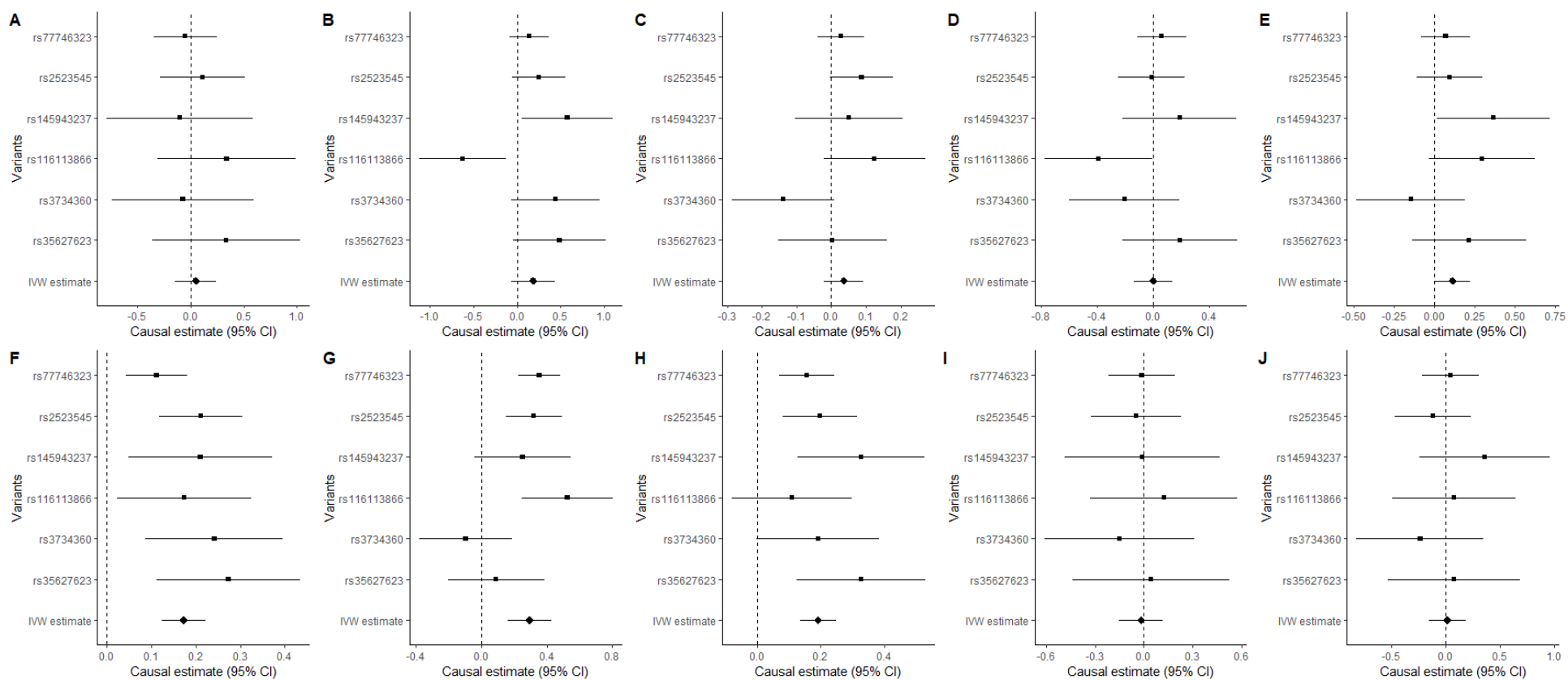


Fig.1 Mendelian randomization of chronic HBV infection and site-specific cancers. (A) biliary tract (B) cervix, (C) colorectum, (D) endometrium, (E) oesophagus, (F) gastric, (G) liver, (H) lung, (I) ovary, and (J) pancreas.

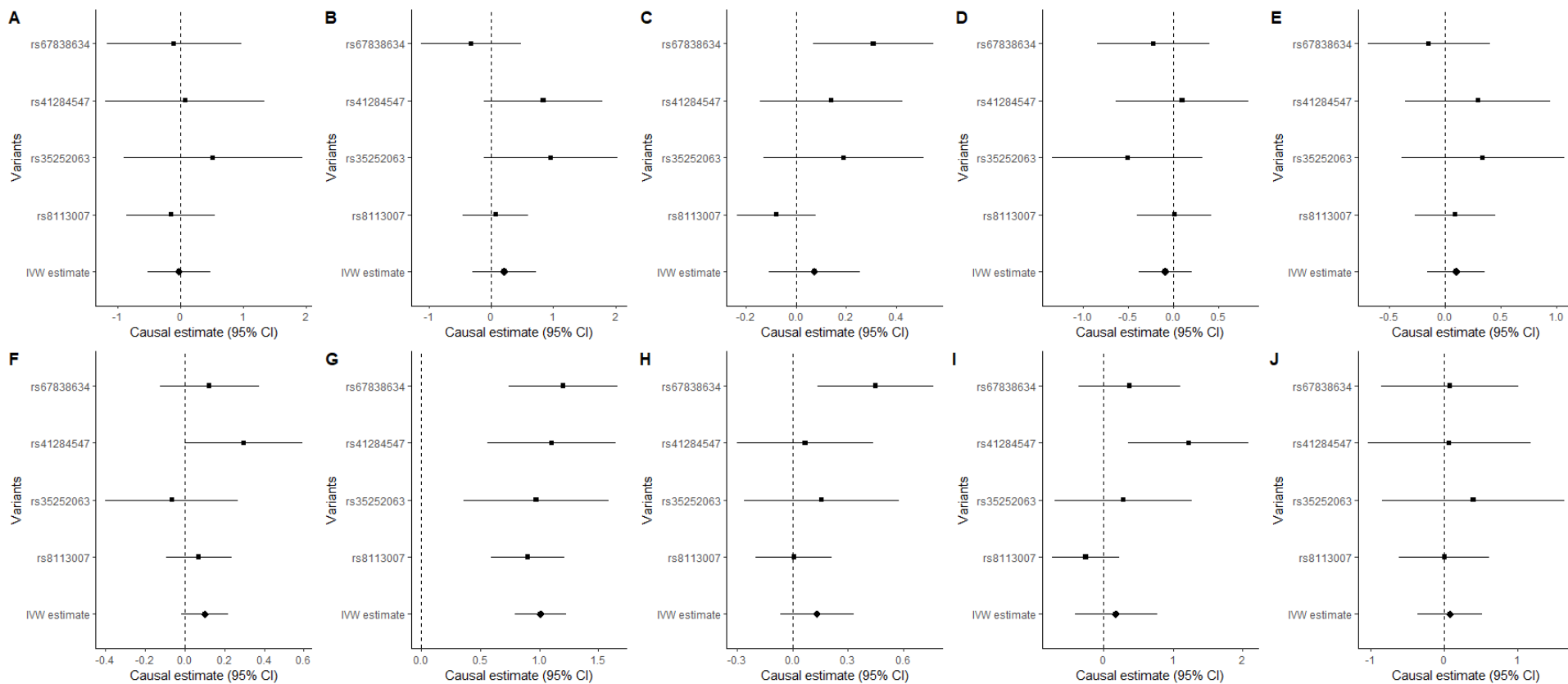


Fig.2 Mendelian randomization of chronic HCV infection and site-specific cancers. (A) biliary tract (B) cervix, (C) colorectum, (D) endometrium, (E) oesophagus, (F) gastric, (G) liver, (H) lung, (I) ovary, and (J) pancreas.

Supplementary material

Table S1. Instrumental variables used in the causal analysis of chronic hepatitis infection with various site-specific cancers.

SNP	Chr	Position	A1	A2	MAF	Beta	SE	Nearest genes	P-value
Hepatitis B									
rs77746323	6	33036401	C	T	0.599	0.517	0.040	<i>HLA-DPA1</i>	1.32 x 10 ⁻³⁸
rs2523545	6	31333499	G	A	0.872	0.551	0.060	<i>DHFRP2</i>	5.61 x 10 ⁻²⁰
rs145943237	6	26865972	G	T	0.725	0.271	0.048	<i>GUSBP2</i>	1.18 x 10 ⁻⁰⁸
rs116113866	6	30286105	C	G	0.043	-0.582	0.102	<i>HCG17</i>	1.34 x 10 ⁻⁰⁸
rs3734360	6	34100568	G	A	0.033	-0.640	0.116	<i>GRM4</i>	3.36 x 10 ⁻⁰⁸
rs35627623	6	28583377	A	C	0.885	0.355	0.065	<i>SCAND3</i>	4.54 x 10 ⁻⁰⁸
Hepatitis C									
rs67838634	6	32662128	A	G	0.437	-0.142	0.019	<i>MTCO3P1</i>	8.11 x 10 ⁻¹⁴
rs41284547	6	31390139	T	A	0.557	0.128	0.020	<i>HCP5</i>	3.11 x 10 ⁻¹⁰
rs35252063	6	29606954	A	G	0.279	-0.119	0.021	<i>SUMO2P1</i>	2.26 x 10 ⁻⁰⁸
rs8113007	19	39743103	A	T	0.105	0.356	0.033	<i>MSRB1P1</i>	6.59 x 10 ⁻²⁸

SNP; single nucleotide polymorphisms, Chr: chromosome, MAF; minor allele frequency, SE; standard error

Table S2. Assessment of pleiotropy for the association between chronic hepatitis infections with site-specific cancers.

Cancer sites	Chronic Hepatitis B infection					Chronic hepatitis C infection				
	MR-Egger intercept	P-value	Q-value	P _{het}	I ²	MR-Egger intercept	P-value	Q-value	P _{het}	I ²
Biliary tract	-0.016	0.930	2.24	0.813	0.00	0.063	0.550	0.72	0.868	0.00
Cervix	0.264	0.241	14.7	0.011	66.2	0.083	0.474	5.49	0.138	45.5
Colorectum	0.007	0.898	8.22	0.145	39.2	0.060	0.012	7.98	0.046	62.4
Endometrium	0.174	0.113	7.07	0.215	29.3	-0.044	0.470	1.61	0.656	0.00
Esophagus	0.154	0.090	6.07	0.299	17.7	0.015	0.787	1.54	0.674	0.00
Gastric	0.029	0.559	6.04	0.302	17.2	0.010	0.720	2.78	0.426	0.00
Liver	-0.041	0.760	12.7	0.025	60.9	0.039	0.390	1.28	0.732	0.00
Lung	0.096	0.065	4.81	0.438	0.00	0.044	0.270	5.47	0.140	45.2
Ovary	0.024	0.848	0.81	0.976	0.00	0.181	0.030	8.95	0.029	66.5
Pancreas	0.202	0.194	2.61	0.761	0.00	0.036	0.695	0.31	0.958	0.00

Q; Heterogeneity test statistic, P_{het}; P-value for heterogeneity, I²