

1 **Counterproductive effects of Daratumumab and checkpoint**  
2 **inhibitor for the treatment of patients with relapsing NK/T**  
3 **lymphoma**

4  
5 **Wendy W.L. Lee<sup>1</sup>, Jing Quan Lim<sup>2,3</sup>, Tiffany P.L Tang<sup>4</sup>, Daryl Tan<sup>5</sup>, Puan Kia**  
6 **Joo<sup>1</sup>, Kim Peng Tan<sup>1</sup>, Liang Wei Wang<sup>1</sup>, Ser Mei Koh<sup>1</sup>, Choon Kiat Ong<sup>2,7,8</sup>, Olaf**  
7 **Rotzschke<sup>1</sup>**

8 <sup>1</sup>Singapore Immunology Network, Agency for Science, Technology and Research  
9 (A\*STAR) Biopolis, Singapore

10 <sup>2</sup>Lymphoma Genomic Translational Research Laboratory, Division of Cellular and  
11 Molecular Research, National Cancer Centre Singapore, Singapore

12 <sup>3</sup>ONCO-ACP, Duke-NUS Medical School, Singapore

13 <sup>4</sup>Division of Medical Oncology, National Cancer Centre Singapore, Singapore

14 <sup>5</sup>Clinic for Lymphoma, Myeloma and Blood Disorders, Mount Elizabeth Hospital,  
15 Singapore

16 <sup>6</sup>Department of Hematology, Singapore General Hospital, Singapore

17 <sup>7</sup>Genome Institute of Singapore, Agency for Science, Technology and Research  
18 (A\*STAR) Biopolis, Singapore

19

20 <sup>8</sup>Duke-NUS Graduate Medical School, Singapore

21

**NOTE: This preprint reports new research that has not been certified by peer review and should not be used to guide clinical practice.**

22

23

24 **CORRESPONDENCE:**

25 Dr Olaf Rotzschke, 8A Biomedical Grove #04-06 Singapore 138648

26 [olaf\\_rotzschke@immunol.a-star.edu.sg](mailto:olaf_rotzschke@immunol.a-star.edu.sg)

27

28

29 **CONFLICT OF INTEREST**

30 All authors have no conflict of interest.

31

32 **GRANTS AND FINANCIAL SUPPORT**

33 The study was supported by the Biomedical Research Council, A\*STAR and  
34 Singapore Ministry of Health's National Medical Research Council (NMRC-OFLCG-  
35 18May0028). L.W.W is supported by MOH-OFYIRG19nov-0013. The funders had no  
36 role in study design, data collection and analysis, decision to publish, or preparation  
37 of the manuscript.

38

39 **ABSTRACT**

40 Natural killer/T cell lymphoma (NK/T L) is an aggressive malignancy associated with  
41 poor prognosis in relapsed patients. Although L-asparaginase based treatments are  
42 recommended as first-line treatment in relapsed patients, advances in  
43 immunotherapies such as checkpoint inhibitions have provided new therapeutic  
44 alternatives. However, as clinical outcomes for checkpoint inhibitors seemed to vary  
45 between NK/T L patients, combination therapies have been suggested to improve  
46 treatment efficacy. Here, we compared the effects of Daratumumab (anti-CD38)/anti-  
47 PD-1 combination therapy versus anti-PD-1 monotherapy on two relapsed NK/T L  
48 patients. Anti-PD-1 triggered an upregulation of CD38 on activated T cells, leading to  
49 depletion by Daratumumab. Concomittantly, EBV-specific antibody titer was also  
50 reduced alongside with depletion of CD38+ B cells and antibody-producing  
51 plasmablasts. Taken together, combining anti-CD38 and anti-PD-1 is likely to be  
52 antithetic.

53

54 Current wordcount: 126 words

55

## 56 INTRODUCTION

57 NK/T-cell lymphoma (NK/T L) is a rare and aggressive form of an Epstein Barr Virus  
58 (EBV)-associated cancer with a predilection for non-Caucasian populations.[1] Most  
59 early stage patients were administered radiotherapy, which gives a 50% 5-year  
60 survival rate.[2] L-asparaginase based regimens such as SMILE (steroid,  
61 methotrexate, ifosfamide, L-asparaginase and etoposide) is given at late stages or  
62 relapsed patients. However, these chemotherapy regimes typically gave rise to  
63 adverse events such as high grade lymphopenia and increased infection risks,  
64 leaving SMILE refractory NK/T L patients with a poor prognosis.[3]

65

66 In recent years, advances in immunotherapy provide a new avenue for the treatment  
67 of cancer patients. By harnessing the body's natural defence to fight cancer cells, this  
68 approach has proved to be effective for the treatment of many cancers including  
69 various forms of EBV-associated lymphomas. In particular, efficacy of checkpoint  
70 inhibition targeting receptor ligand pairs such as PD-1/PD-L1 monotherapy was  
71 demonstrated in patients with relapsed/refractory NK/T L, where ~30-70% of the  
72 patients achieved complete response (CR) from PD-1 blockade therapy.[4-7]

73

74 PD-1 is a immunoinhibitory molecule expressed on activated lymphocytes including  
75 CD8+ T cells. Its partner ligand PDL1 is commonly found on antigen-presenting cells  
76 and lymphoma cells. Ligation of PD-1 with PDL1 inhibits T cell cytotoxicity [8, 9] and  
77 the use of anti-PD-1 such as Pembrolizumab perturbs this receptor/ligand interaction,  
78 hence unleashing the cytotoxicity of T cells to kill the tumour cells.[10]

79

80 Another way to obliterate cancer cells through immunotherapy is based on antibody-

81 dependent cellular cytotoxicity (ADCC).[11] ADCC results in the depletion of cells  
82 that are bound by the targeting antibodies. For instance, anti-CD38 was found to  
83 effectively deplete multiple myeloma (MM) cells as these cells express high levels of  
84 CD38.[12] In another study, NK/T L cells were found to express CD38 and  
85 Daratumumab alone was highly efficacious in a patient with NK/T L.[13] Interestingly,  
86 CD38 is an activation marker that can be found on B cells, plasmablast and activated  
87 T cells.

88

89 In spite of the apparent effectiveness of immune checkpoint inhibition, it often works  
90 only in a subset of patients.[4-7] A common strategy to increase treatment efficiency  
91 is through the use of combination therapy to enhance synergistic effects.[14]  
92 However, not all treatments are compatible. Anti-PD1 and anti-CD38 monotherapy  
93 may have been effective for NK/T L patients. However, the effects of combining both  
94 treatment seems counterproductive as anti-CD38 treatment effectively eliminates key  
95 immune cell populations specifically activated by checkpoint inhibition. In this case  
96 study we demonstrate the neutralizing effect of Daratumumab on checkpoint  
97 inhibition by comparing immune cell composition, EBV DNA titer and EBV-specific  
98 antibody titers in blood samples of two relapsed NK/T L patients.

99

## 100 **METHODS**

### 101 **Sample collection**

102 Fresh blood samples were obtained from healthy volunteers and patients in  
103 accordance to the Helsinki declaration and approved by the SingHealth Centralised  
104 Institutional Review Board CIRB Ref: 2017/2806 and 2004/407/F respectively.

105 Written informed consent was obtained from volunteer donors prior to sample  
106 collection.

107

### 108 **Quantitation of EBV genomic DNA levels in patient plasma samples**

109 Patient plasma was split into two fractions and treated either Buffer RDD (QIAGEN)  
110 or DNase I (QIAGEN). DNA from the DNase I-treated fraction represents only virion-  
111 encapsidated DNA while DNA mock-treated by Buffer RDD represents total DNA  
112 from a patient's plasma (cell-free host DNA, virion-encapsidated DNA and free-  
113 floating viral DNA). An equal volume of cold phenol-saturated Tris-EDTA (10 mM Tris,  
114 pH 8.0 with 1 mM EDTA) was added to each tube prior to vigorous shaking. Samples  
115 were then centrifuged at maximum speed at 4°C for 15 min. An additional 100 µL of  
116 Buffer EB (QIAGEN) was gently added to facilitate aspiration. The aqueous phase of  
117 DNA was extracted and stored at -20°C until use. Standard ethanol precipitation  
118 using glycogen as carrier was performed to concentrate the DNA. Buffer EB  
119 (QIAGEN) was used to resuspend the purified DNA. Virus quantification was  
120 performed in accordance to published qPCR protocol using 1 µL template DNA.[15]  
121 Standard curve was generated using DNA from the Namalwa EBV-positive Burkitt's  
122 lymphoma cell line.[16]

123

### 124 **Anti-EBV VCA IgG and total IgG quantification**

125 Quantification of total IgG was performed according to manufacturer's protocol using  
126 Human IgG ELISA quantification set (Bethyl Laboratories) with heat inactivated  
127 human plasma samples diluted at 1:50,000. Quantification of anti-EBV VCA IgG was  
128 performed according to manufacturer's protocol using EBV-VCA IgG ELISA kit  
129 (Calbiotech) using heat inactivated human plasma samples.

130

### 131 **Immunophenotyping by mass cytometry**

132 PBMCs were isolated using Ficoll-Paque density gradient centrifugation, frozen in  
133 freezing medium (10% DMSO, 90% fetal bovine serum(FBS)) and stored at -80°C  
134 until use. For Immunophenotyping by mass cytometry, PBMCs were thawed using  
135 complete RPMI (RPMI+10%FBS) and washed with PBS. The cells are then treated  
136 with cisplatin for 5 mins, followed by incubation with metal-conjugated surface  
137 antibodies cocktail containing CD45, CD19, CD20, CD27, CD38, CD3, CD45RA,  
138 CD4, CD8 for 30mins on ice. Cells were washed twice with CyFACS buffer (PBS with  
139 4% FBS, 0.05% sodium azide) and fixed overnight using 2% PFA made in PBS. The  
140 next day, cells were barcoded and stained with Cell-ID Intercalator-Ir (Fluidigm) in  
141 PBS for 20 mins at room temperature. Cells were washed twice with CyFACS buffer  
142 followed by a final wash using MiliQ water and passed through size filter. Filtered  
143 cells were acquired using Helios mass cytometer (Fluidigm) on CyTOF software  
144 version 7.0.5189. Analyses were performed using Flowjo V10.5.3

145

## 146 **RESULTS**

### 147 **Treatment regimes**

148 For this study we longitudinally tracked two relapsed NK/T L patients who failed  
149 SMILE therapy (Figure 1A). The first patient underwent anti-PD1 monotherapy  
150 (pt\_MT) received Pembrolizumab on 21 and 24 days post SMILE treatment (dps)  
151 while the other patient who underwent combination therapy (pt\_CT) was treated on  
152 day 42 dps with Daratumumab followed by subsequent treatment with anti PD-1  
153 (Nivolumab) on 91, 105 and 120 dps. Pt\_CT also developed transient leukocytosis  
154 from 117-128 dps, before demise at 176 dps. For this study, blood samples were



155 obtained at days 21 and 24 dps for pt\_MT and on 91 and 105 dps for pt\_CT.

156

157 **Increased EBV viremia and reduced levels of EBV-specific IgG in patient**  
158 **undergoing combination therapy**

159 As NK/T L cells release EBV DNA, the tumour burden can be directly associated with  
160 the amount of EBV DNA circulating in the blood.[17] At the start of the  
161 Pembrolizumab treatment, comparable levels of serum EBV DNA detected in both  
162 patients (Figure 1B). While in patient pt\_MT, a slight reduction in the level of  
163 circulating EBV DNA was observed after anti-PD1 treatment, a marked increase was  
164 detected in patient pt\_CT (Figure 1B). Further analysis shows that a small  
165 percentage of the viral DNA in pt\_CT is derived from virions (DNase-protected),  
166 suggesting that the increased level of circulating DNA are likely at least in part due to  
167 reactivated virus replication. Notably, virion-encapsidated EBV DNA was not  
168 detected in the case of pt\_MT.

169

170 It is estimated that 90% of the world population has been infected by EBV.[18] Thus,  
171 it is expected that most of the healthy controls have high levels IgG against EBV  
172 (Figure 1C). Equally high levels of anti-EBV IgG were also found in patient pt\_MT  
173 (Figure 1C). Surprisingly, patient pt\_CT was found to be negative for anti-EBV IgG  
174 (Figure 1C). Notably, while EBV-specific IgG was undetectable, the patient was also  
175 found to have low levels of total IgG (Figure 1D).

176

177 **Depletion of antibody producing plasmablasts by anti-CD38**

178 The low levels of EBV-specific and total IgG in patient pt\_CT (Figure 1C and D)  
179 motivated us to check whether B cells are affected in this patient. Peripheral blood

180 mononuclear cells (PBMCs) from the two patients were analysed using flow  
181 cytometry. Healthy donors were included as controls. Prior to anti-PD1 treatment,  
182 both patients had substantially reduced B cell numbers as compared to healthy  
183 controls (Figure 2A). However, patient pt\_MT showed a marked increase in  
184 CD38+CD27+ B cells, which consist of plasma cells, antibody-producing  
185 plasmablasts and memory B cells (Figure 2B and C). Patient pt\_CT in turn showed a  
186 striking depletion of all CD38+ B cells to negligible levels. This was apparent in both  
187 CD38+CD27+ (Figure 2B and C) and CD38+CD27- (naïve and transitional) (Figure  
188 2B and D) B cell populations. The analysis for pt\_CT was done nearly 50 days after  
189 the anti-CD38 injection, stressing the efficiency of the cell depletion by Daratumumab.  
190 This was in line with another study which shows the effects of Daratumumab can  
191 persist up to 3 months post administration [19].

192

### 193 **Anti-CD38 therapy depletes the T cells activated by anti-PD1**

194 Given the effective depletion of Daratumumab on CD38+ antibody producing B cells,  
195 it is likely that it will have a similar effect on the T cell compartment. One of the  
196 desired outcomes for anti-PD1 treatment is to reinvigorate exhausted tumour-specific  
197 CD8+ T cells so that they can directly kill tumour cells. Comparative analysis of  
198 samples from patient pt\_MT taken before and after anti-PD-1 treatment confirmed  
199 the expansion of CD45RA- T cells (Figure 3A). Moreover, the analysis further  
200 revealed that these CD45RA- cells also strongly upregulated CD38.

201

202 Prior to the checkpoint inhibition, about 38% of the CD8 T cells were of CD45RA-  
203 CD38+ activated phenotype and this proportion further increase to more than 80%  
204 following anti-PD1 treatment (Figure 3A). On the other hand, a striking absence of

205 CD38+ CD8+ T cell was observed in patient pt\_CT (Figure 3A). This lack of CD38+ T  
206 cells were concordant before and after anti-PD1 treatment, suggesting that even 50  
207 days after injection there are still sufficient amounts of the anti-CD38 antibody in the  
208 circulation to deplete all cells expressing the surface marker as a result of the  
209 checkpoint inhibition. Intriguingly, this observation was also made in the CD4+ T cells  
210 compartment (Figure 3B).

211

## 212 **DISCUSSION**

213 Checkpoint inhibition therapy such as anti-PD1 and anti-CD38 depletion therapy  
214 have both been suggested to be alternative treatments for late-stage NK/T L patients  
215 that are refractory to chemotherapy.[4-7, 13] Checkpoint inhibition therapies works  
216 by preventing inhibitory receptor signals of tumour-specific immune cells to revigorate  
217 their cytotoxic capacity and has been shown to be effective for the treatment of  
218 tumours with high neo-antigen load.[20]

219

220 Recent studies have shown that anti-PD1/PD-L1 treatment is also effective for NK/T  
221 L.[4-7] In line with these reports, we observed that patient pt\_MT responded well to  
222 anti-PD1 treatment in terms of clinical progression as well as changes in the PBMC  
223 composition. Administration of anti-PD1 triggered a massive activation and  
224 expansion of CD45RA- effector/memory cells on both cytotoxic CD8+ as well as  
225 helper CD4+ subsets in the patient.

226

227 On the other hand, anti-CD38 depletion which directly target the tumour via ADCC  
228 was also shown to be an alternative treatment for NK/T L as high expression of CD38  
229 was found on the tumour cells. Daratumumab was reported to have some efficacy in

230 depletion of the lymphoma.[13]

231

232 While it has been suggested that a combination of these two approaches could  
233 further enhance treatment efficacy,[21] here we present data from two cases of NK/T  
234 L relapsed patients who have undergone anti-PD1 treatment and one of them with  
235 anti-CD38 treatment prior to anti-PD1 treatment, to show that the combined use likely  
236 to be counterproductive.

237

238 In addition to NK/T L, CD38 is also an activation marker expressed on activated T  
239 cells in response to anti-PD1 treatment. The importance of these CD38+ leukocytes  
240 was observed in hepatocarcinoma patients, where patients with higher levels of  
241 infiltrating CD38+ cells were found to respond better to anti-PD1 treatment.[22]

242

243 By monitoring the blood profile of patient pt\_CT, we demonstrated that anti-CD38  
244 treatment administered prior to anti-PD1 treatment depleted key immune populations  
245 activated by anti-PD1 treatment. Activation of T cells by anti-PD1 resulted in the  
246 upregulation of CD38 and predisposes these cells to depletion by the circulating  
247 Daratumumab antibodies, thus abrogating any beneficial effect that may have arisen  
248 from the checkpoint inhibition. Although the case of death may be unrelated to the  
249 treatment, patient pt\_CT succumbed to the disease shortly.

250

251 Daratumumab has shown clinical efficacy in the treatment for multiple myeloma (MM)  
252 as these cancer cells expresses high levels of CD38.[12] MM arises from plasma  
253 cells, which are antibody-secreting B cells which generally express high levels of  
254 CD38.[23] It is thus unsurprising to find patient pt\_CT to be severely depleted of

255 CD38+ B cells, which include plasma cells and plasmablasts. Depletion of these cells  
256 also accounted for very low total IgG levels and in particular, for the absence of anti-  
257 EBV IgG titer despite the high levels of circulating EBV DNA in the patient. The small  
258 burst of virion production as evidenced by the detection of encapsidated viral DNA  
259 may be detrimental as there is potential for secondary EBV infection of residual B  
260 cells. The loss of antibody titers and B cell responses can also cause patients to be  
261 more susceptible to infections, which could be a contributing factor to the  
262 uncontrollable increase in EBV viremia in patient pt\_CT. However, this observation  
263 contradicts the results from an MM study, where no reduction in IgG levels were seen  
264 in patients treated with Daratumumab.[24] It thus remains to be seen to what extent  
265 Daratumumab compromises the humoral response.

266  
267 Despite the small sample size, this study has important clinical implications in the  
268 treatment of NK/T L patients as it provided strong evidences to caution against the  
269 combined use of anti-PD1 and anti-CD38 agents, despite their successes in single-  
270 agent clinical studies.

271

## 272 **ACKNOWLEDGEMENTS**

273 We thank all patients and healthy donors for making this study possible.

274

## 275 **REFERENCES**

- 276 1. Morton, L.M., Wang, S.S., Devesa, S.S., et al., *Lymphoma incidence patterns*  
277 *by WHO subtype in the United States, 1992-2001*. Blood, 2006. **107**(1): p.  
278 265-276.
- 279 2. Isobe, K., Uno, T., Tamaru, J.-i., et al., *Extranodal natural killer/T-cell*  
280 *lymphoma, nasal type*. Cancer, 2006. **106**(3): p. 609-615.

- 281 3. Yamaguchi, M., Kwong, Y.L., Kim, W.S., et al., *Phase II study of SMILE*  
282 *chemotherapy for newly diagnosed stage IV, relapsed, or refractory extranodal*  
283 *natural killer (NK)/T-cell lymphoma, nasal type: the NK-Cell Tumor Study*  
284 *Group study*. J Clin Oncol, 2011. **29**(33): p. 4410-6.
- 285 4. Li, X., Cheng, Y., Zhang, M., et al., *Activity of pembrolizumab in*  
286 *relapsed/refractory NK/T-cell lymphoma*. Journal of Hematology & Oncology,  
287 2018. **11**(1): p. 15.
- 288 5. Kwong, Y.-L., Chan, T.S.Y., Tan, D., et al., *PD1 blockade with pembrolizumab*  
289 *is highly effective in relapsed or refractory NK/T-cell lymphoma failing l-*  
290 *asparaginase*. Blood, 2017. **129**(17): p. 2437-2442.
- 291 6. Lim, J.Q., Huang, D., Tang, T., et al., *Whole-genome sequencing identifies*  
292 *responders to Pembrolizumab in relapse/refractory natural-killer/T cell*  
293 *lymphoma*. Leukemia, 2020. **34**(12): p. 3413-3419.
- 294 7. Kim, S.J., Lim, J.Q., Laurensia, Y., et al., *Avelumab for the treatment of*  
295 *relapsed or refractory extranodal NK/T-cell lymphoma: an open-label phase 2*  
296 *study*. Blood, 2020. **136**(24): p. 2754-2763.
- 297 8. Freeman, G.J., Long, A.J., Iwai, Y., et al., *Engagement of the Pd-1*  
298 *Immunoinhibitory Receptor by a Novel B7 Family Member Leads to Negative*  
299 *Regulation of Lymphocyte Activation*. Journal of Experimental Medicine, 2000.  
300 **192**(7): p. 1027-1034.
- 301 9. Parry, R.V., Chemnitz, J.M., Frauwirth, K.A., et al., *CTLA-4 and PD-1*  
302 *Receptors Inhibit T-Cell Activation by Distinct Mechanisms*. Molecular and  
303 Cellular Biology, 2005. **25**(21): p. 9543-9553.
- 304 10. Garon, E.B., Rizvi, N.A., Hui, R., et al., *Pembrolizumab for the Treatment of*  
305 *Non–Small-Cell Lung Cancer*. New England Journal of Medicine, 2015.  
306 **372**(21): p. 2018-2028.
- 307 11. Wang, W., Erbe, A.K., Hank, J.A., et al., *NK Cell-Mediated Antibody-*  
308 *Dependent Cellular Cytotoxicity in Cancer Immunotherapy*. Frontiers in  
309 immunology, 2015. **6**: p. 368-368.
- 310 12. Lokhorst, H.M., Plesner, T., Laubach, J.P., et al., *Targeting CD38 with*  
311 *Daratumumab Monotherapy in Multiple Myeloma*. N Engl J Med, 2015.  
312 **373**(13): p. 1207-19.

- 313 13. Hari, P., Raj, R.V., and Olteanu, H., *Targeting CD38 in Refractory Extranodal*  
314 *Natural Killer Cell-T-Cell Lymphoma*. N Engl J Med, 2016. **375**(15): p. 1501-  
315 1502.
- 316 14. Mokhtari, R.B., Homayouni, T.S., Baluch, N., et al., *Combination therapy in*  
317 *combating cancer*. Oncotarget, 2017. **8**(23).
- 318 15. Lo, Y.M., Chan, L.Y., Lo, K.W., et al., *Quantitative analysis of cell-free Epstein-*  
319 *Barr virus DNA in plasma of patients with nasopharyngeal carcinoma*. Cancer  
320 Res, 1999. **59**(6): p. 1188-91.
- 321 16. Lawrence, J.B., Villnave, C.A., and Singer, R.H., *Sensitive, high-resolution*  
322 *chromatin and chromosome mapping in situ: presence and orientation of two*  
323 *closely integrated copies of EBV in a lymphoma line*. Cell, 1988. **52**(1): p. 51-  
324 61.
- 325 17. Lei, K.I.K., Chan, L.Y.S., Chan, W.-Y., et al., *Diagnostic and Prognostic*  
326 *Implications of Circulating Cell-free Epstein-Barr Virus DNA in Natural Killer/T-*  
327 *Cell Lymphoma*. Clinical Cancer Research, 2002. **8**(1): p. 29-34.
- 328 18. sde Martel, C., Ferlay, J., Franceschi, S., et al., *Global burden of cancers*  
329 *attributable to infections in 2008: a review and synthetic analysis*. The Lancet  
330 Oncology, 2012. **13**(6): p. 607-615.
- 331 19. Frerichs, K.A., Bosman, P.W.C., van Velzen, J.F., et al., *Effect of*  
332 *daratumumab on normal plasma cells, polyclonal immunoglobulin levels, and*  
333 *vaccination responses in extensively pre-treated multiple myeloma patients*.  
334 Haematologica, 2020. **105**(6): p. e302-e306.
- 335 20. Jiang, T., Shi, T., Zhang, H., et al., *Tumor neoantigens: from basic research to*  
336 *clinical applications*. Journal of Hematology & Oncology, 2019. **12**(1): p. 93.
- 337 21. Jaccard, A. and Hermine, O., *A major turning point in NK/T-cell lymphoma?*  
338 Blood, 2017. **129**(17): p. 2342-2343.
- 339 22. Goh, S., Ng, H.H.M., Chew, V., et al., *CD38 is a good predictor of anti-PD-1*  
340 *immunotherapy responsiveness in hepatocellular carcinoma*. bioRxiv, 2019: p.  
341 638981.
- 342 23. Sanz, I., Wei, C., Jenks, S.A., et al., *Challenges and Opportunities for*  
343 *Consistent Classification of Human B Cell and Plasma Cell Populations*.  
344 Frontiers in immunology, 2019. **10**: p. 2458-2458.
- 345 24. Frerichs, K.A., Bosman, P.W.C., van Velzen, J.F., et al., *Effect of*  
346 *daratumumab on normal plasma cells, polyclonal immunoglobulin levels, and*

347            *vaccination responses in extensively pre-treated multiple myeloma patients.*  
348            Haematologica, 2019.  
349  
350



351 **FIGURE LEGEND**

352 **Figure 1. Combination therapy reduces EBV-specific and total immunoglobulin**

353 **(A)** Timeline of treatment in patient undergoing anti-PD1 only monotherapy (pt\_MT)  
354 and patient undergoing anti-CD38 followed by anti-PD1 combination therapy (pt\_CT).  
355 pt\_CT developed transient leukocytosis (indicated by red line on timeline) during the  
356 course of anti-PD1 treatment. BP and AP indicate timepoint before and after anti-  
357 PD1 treatment respectively. Hash (#) indicates demise of patient pt\_CT. Numbers  
358 below the timeline shows the number of days after SMILE therapy was stopped for  
359 the respective patient. (B) Plasma samples were obtained from healthy donors (HC),  
360 pt\_MT and pt\_CT, at timepoints before (BP) and after anti-PD1 (AP) treatment. Bar  
361 charts showing **(B)** EBV viremia (with and without DNase added during sample  
362 extraction) and **(C)** levels of anti-EBV VCA IgG. **(D)** Total IgG quantification was also  
363 performed in HC and patients.

364

365 **Figure 2. Combination therapy depletes CD38+ B cells subsets**

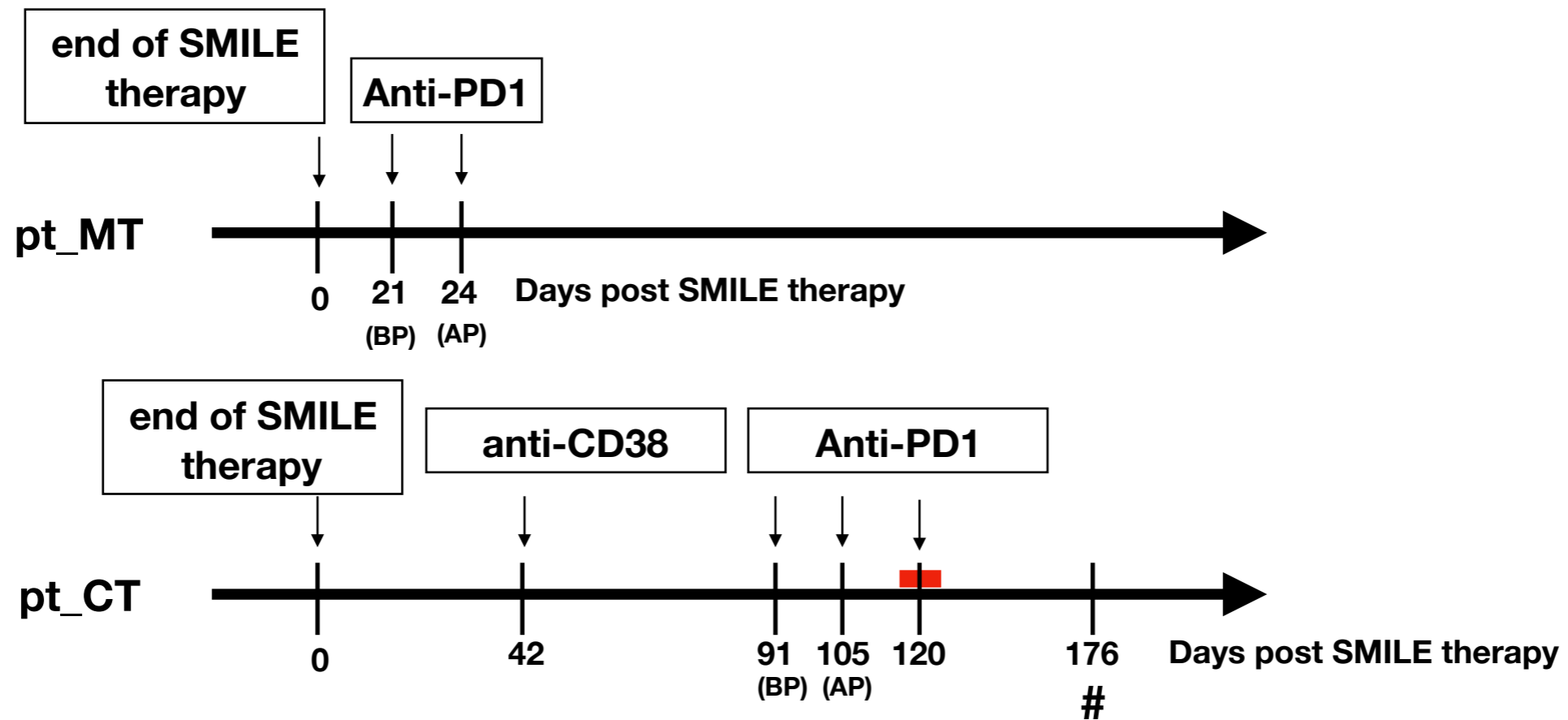
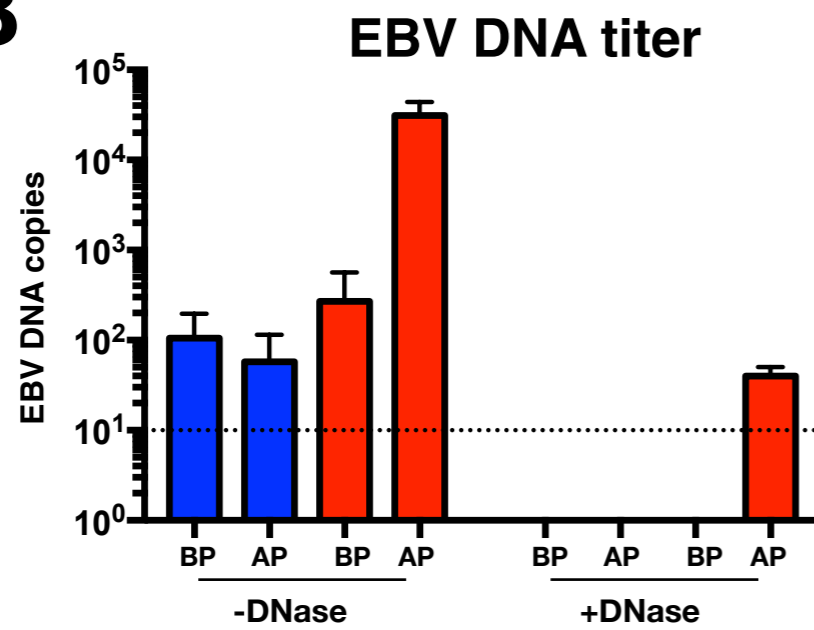
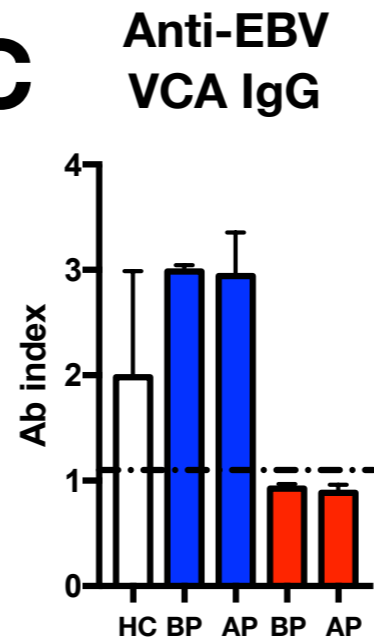
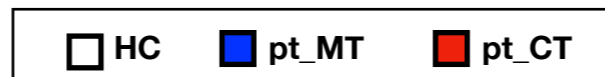
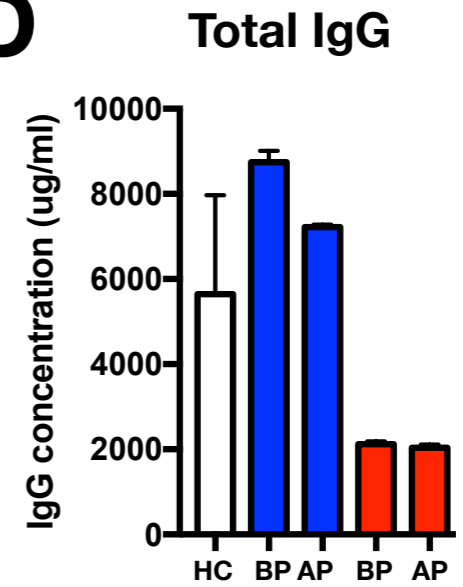
366 PBMC samples were obtained from HC, pt\_MT and pt\_CT, at timepoints before (BP)  
367 and after (AP) anti-PD1 treatment. Immunophenotyping of the PBMCs was  
368 performed. **(A)** Scatterplots (left) and barchart (right) showing percentage  
369 CD20+CD19+ B cells of total CD45+ leukocytes. Number in the scatterplot show the  
370 percentage of CD20+CD19+ B cells of total CD45+ leukocytes. **(B)** Scatterplots  
371 showing CD27 and CD38-expressing B cell subsets. Numbers in the scatterplot show  
372 the percentage of respective population within each quadrant of total B cells. Bar  
373 charts showing the percentage of **(C)** CD38+CD27+ B cells and **(D)** CD38+CD27- B  
374 cells of total B cells derived from **(B)**.

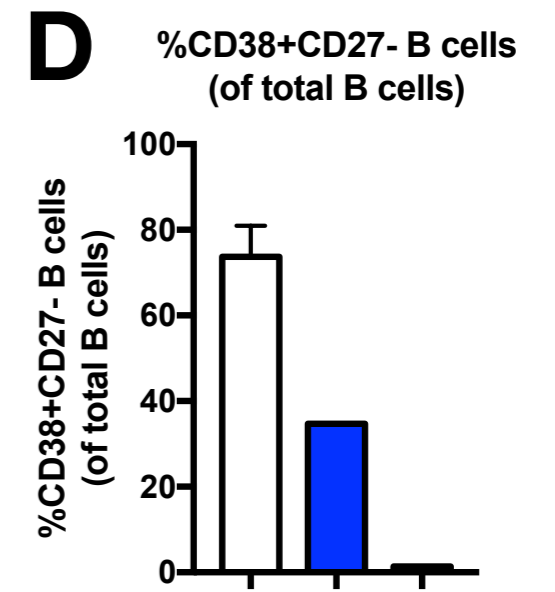
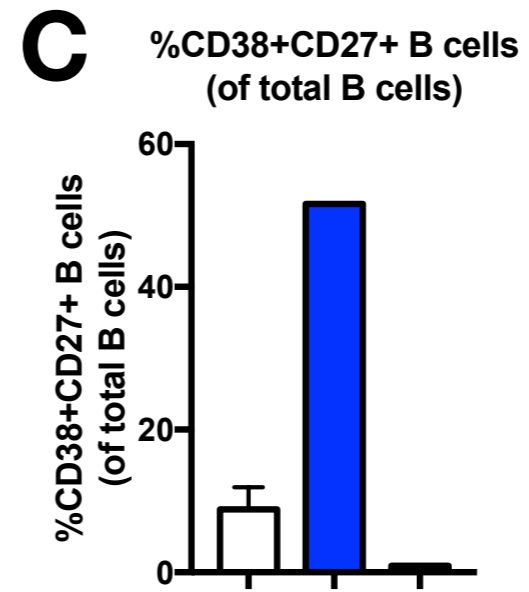
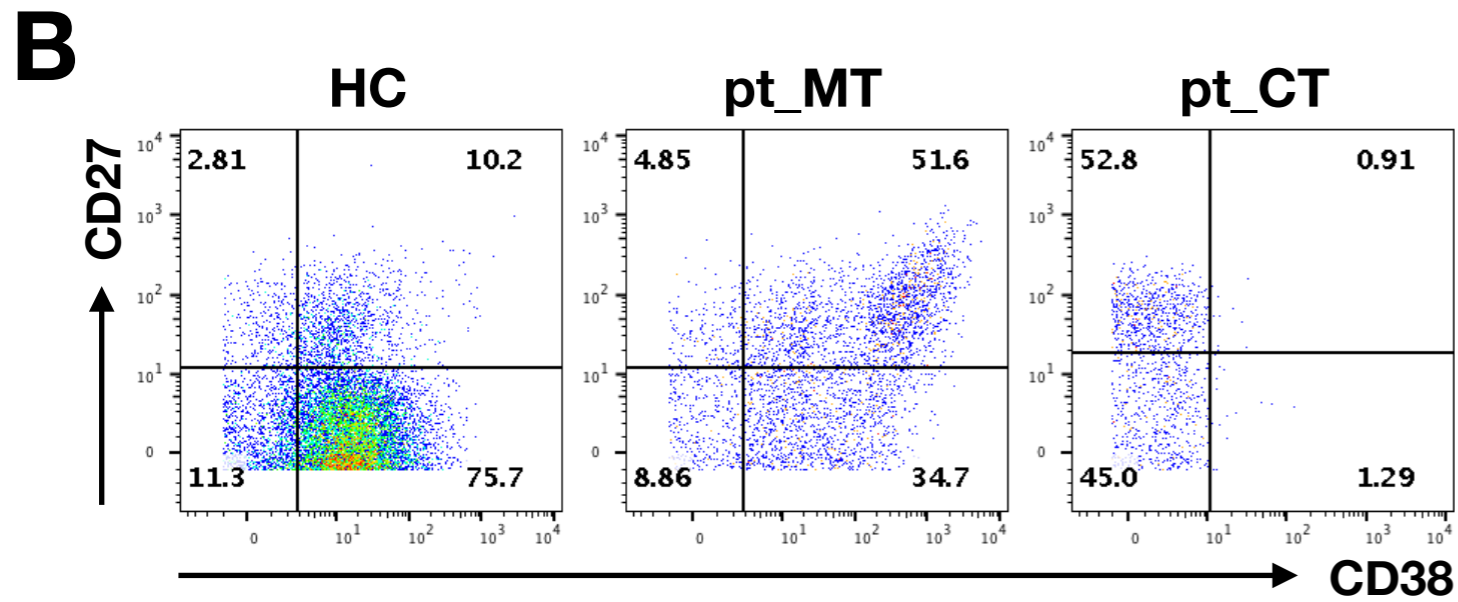
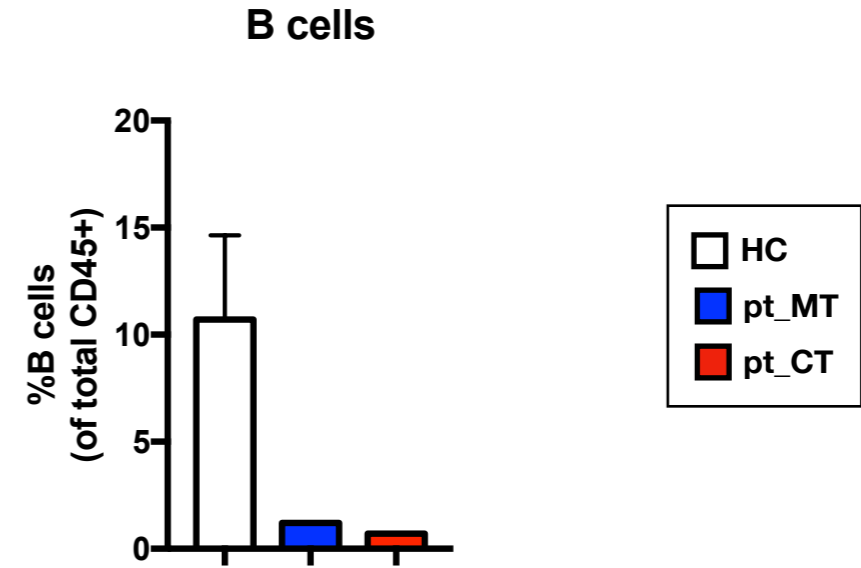
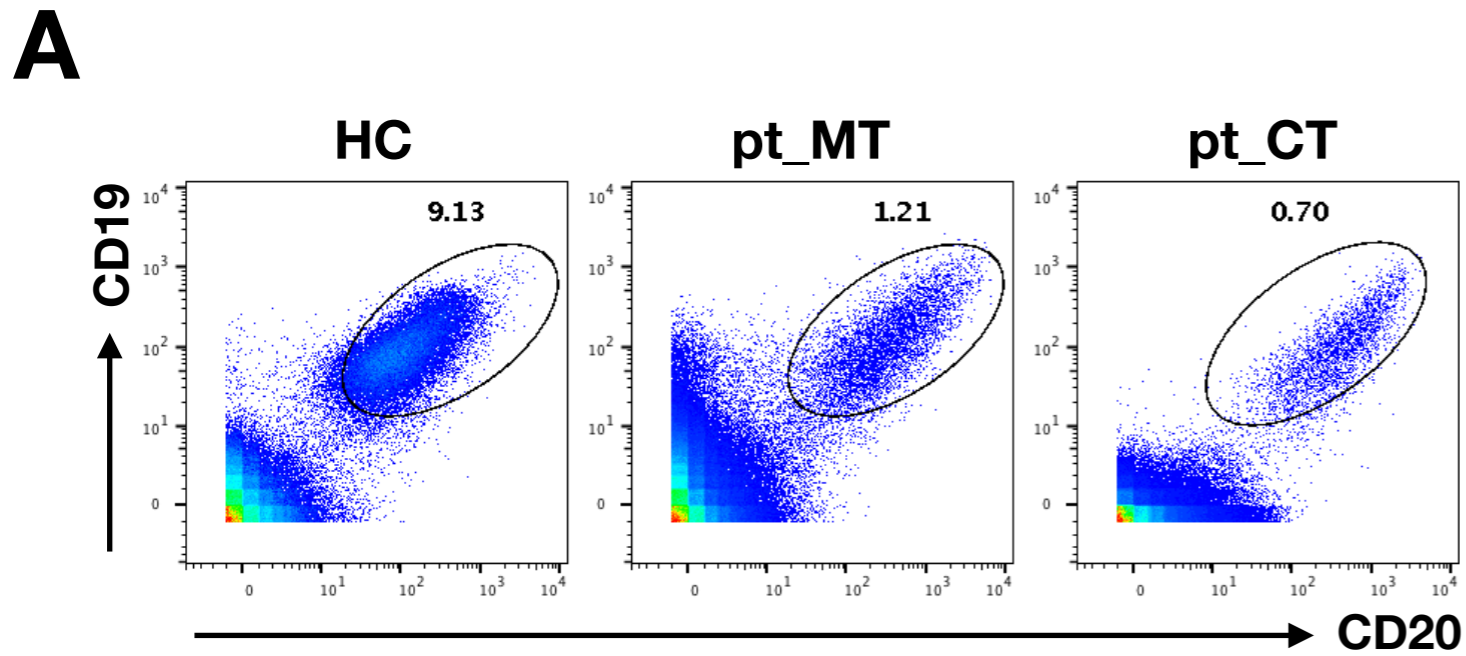
375

376 **Figure 3. Combination therapy abate activated CD38+ T cells**

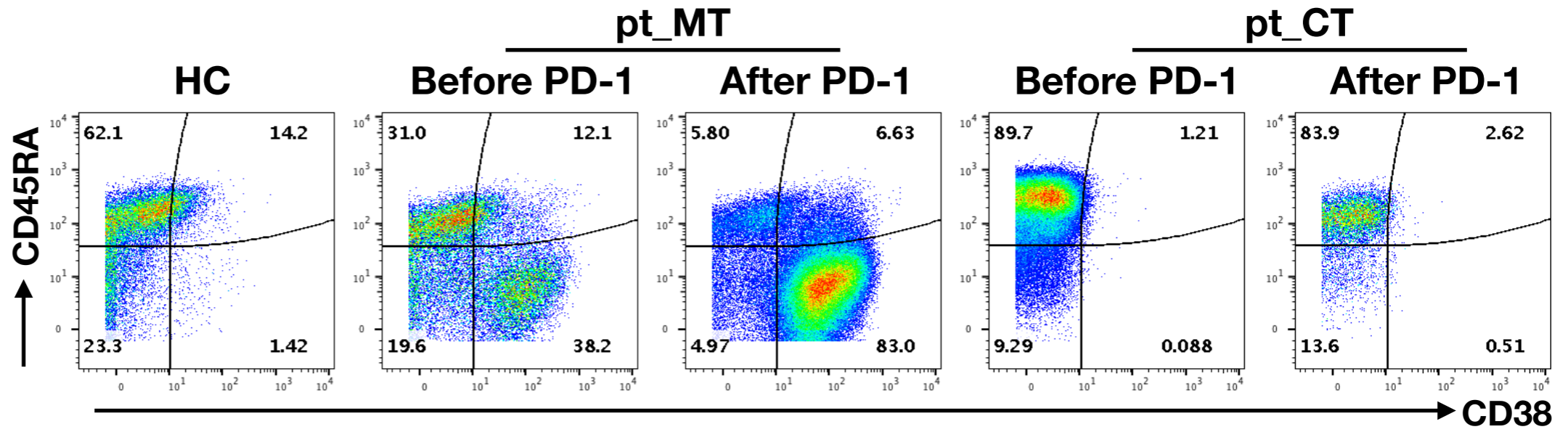
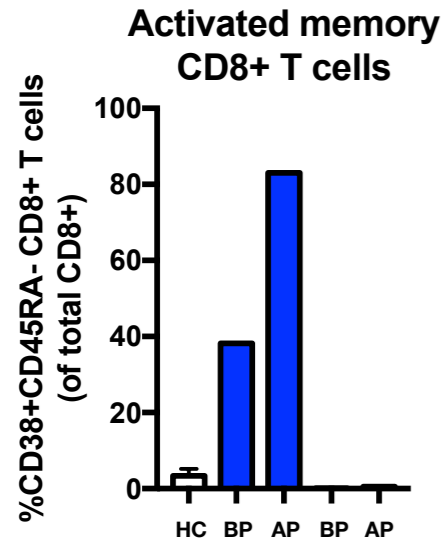
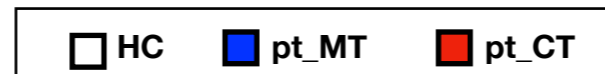
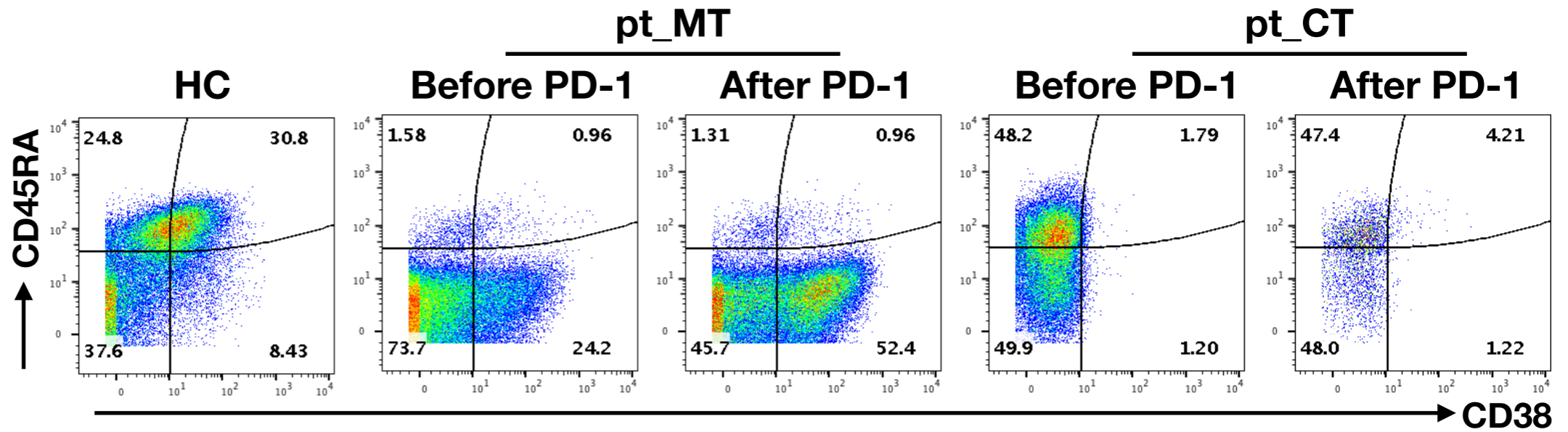
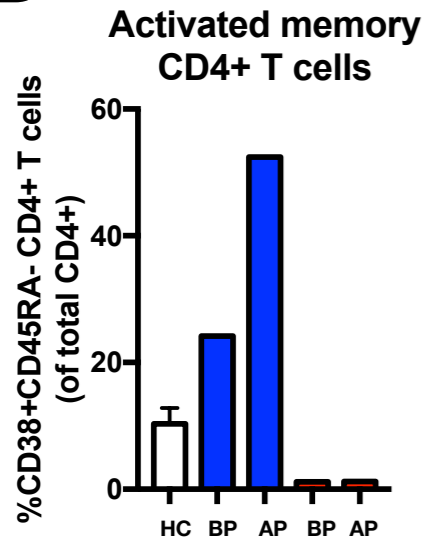
377 PBMC samples were obtained from HC, pt\_MT and pt\_CT, at timepoints before (BP)  
378 and after (AP) anti-PD1 treatment. Immunophenotyping of the PBMCs was  
379 performed and T cells populations were analysed. **(A)** Bar chart (left) showing the  
380 percentage of activated memory CD38+CD45RA- CD8+ T cells of total CD3+ T cell  
381 population. Scatterplots (right) show CD45RA and CD38-expressing CD8+ T cells.  
382 Numbers in the scatterplot show the percentage of respective population within each  
383 quadrant of total CD8+ T cells. **(B)** Bar chart (left) showing the percentage of  
384 activated memory CD38+CD45RA- CD4+ T cells of total CD3+ T cell population.  
385 Scatterplots (right) show CD45RA and CD38-expressing CD4+ T cells. Numbers in  
386 the scatterplot show the percentage of respective population within each quadrant of  
387 total CD4+ T cells.

388

**A****B****C****D****Figure 1**



**Figure 2**

**A****B****Figure 3**