

Immune response during lactation after anti-SARS-CoV2 mRNA vaccine

Yarden Golan, Ph.D., Mary Prah, M.D., Arianna Cassidy, M.D., Alan H.B. Wu, Ph.D., Unurzul Jigmeddagva, M.D., Christine Y. Lin, Veronica J. Gonzalez, M.D, Emilia Basilio, M.D, M.P.H, Lakshmi Warriar, Sirirak Buarpong, D.V.M., Ph.D., Ifeyinwa V. Asiodu, Ph.D, R.N., Nadav Ahituv, Ph.D., Valerie J. Flaherman, M.D., M.P.H., Stephanie L. Gaw, M.D., Ph.D

Author Affiliations

From the Department of Pediatrics, University of California, San Francisco, CA, 94143 (M.P., V.J.F.), Division of Pediatric Infectious Diseases and Global Health, University of California, San Francisco, CA, 94143 (M.P.), Department of Bioengineering and Therapeutic Sciences, University of California, San Francisco, CA, 94158 and Institute for Human Genetics, University of California, San Francisco, CA, 94158 (Y.G., N.A.), Department of Laboratory Medicine, University of California, San Francisco, CA, 94143 (A.H.B.W.) Department of Medicine, University of California, San Francisco, CA, 94143 (L.W.) Division of Maternal-Fetal Medicine, Department of Obstetrics, Gynecology, and Reproductive Sciences, University of California San Francisco, CA, 94143 (A.C., C.Y.L., V.J.G., E.B., S.L.G.). Center for Reproductive Sciences, Department of Obstetrics, Gynecology, and Reproductive Sciences, University of California San Francisco, CA, 94143 (U.J., S.L.G), Department of Family Health Care Nursing, University of California, San Francisco, CA, 94143 (I.V.A.)

Corresponding author: Stephanie L. Gaw- Division of Maternal-Fetal Medicine, Department of Obstetrics, Gynecology, and Reproductive Sciences, University of California San Francisco, 513

Parnassus Ave, HSE16, Box 0556, San Francisco, CA 94143. Phone: 415.476.0535. Email: Stephanie.Gaw@ucsf.edu

Key Points:

Question: What is the immunologic response to anti-COVID-19 mRNA-based vaccines during lactation and does vaccination induce secretion of IgA antibodies into human milk?

Findings: In a cohort of 23 lactating individuals who were vaccinated against SARS-CoV-2, we found significantly increased levels of anti-SARS-CoV2 IgG and IgM antibodies in plasma, as well as anti-SARS-CoV2 IgA in human milk.

Meaning: Lactating individuals receiving anti-COVID-19 vaccines transfer antibodies to their infants and given the long-term health benefits of breastfeeding for the maternal-infant dyad, lactating individuals should be encouraged to continue to breastfeed after vaccination.

Abstract:

Importance: Data regarding efficacy and safety of anti-COVID-19 mRNA vaccines during lactation is needed to address vaccination guidelines, ease vaccine hesitancy concerns, and inform public health strategies for this population.

Objective: To determine whether anti-COVID-19 mRNA-based vaccines administered during lactation illicit an immune response or the transfer of anti-SARS-CoV2 antibodies into human milk.

Design: Plasma and milk samples were collected from a prospective cohort of lactating individuals who received the mRNA-based vaccines for COVID-19 and from individuals who recovered from COVID-19 infection.

Setting: Ambulatory or during postpartum hospitalization.

Participants: We report results from lactating participants who received the mRNA-1273 (Moderna, n=9) or the BNT162b2 (Pfizer, n=14) vaccine or recovered from natural SARS-CoV-2 infection (n=3).

Interventions and Exposures: Anti-COVID-19 mRNA vaccination (BNT-162b2 and mRNA-1273) or natural SARS-CoV-2 infection.

Main Outcome(s) and Measure(s): Plasma and milk samples were collected from lactating individuals before first vaccine dose, on the day of the second dose, and 4 weeks after the second dose. Maternal plasma was evaluated for vaccine-derived IgM and IgG antibodies. Human milk was evaluated by ELISA for vaccine-induced IgA antibodies specific for SARS-CoV-2.

Results: Twenty-three lactating individuals were recruited for this study. Levels of IgG and IgM were significantly increased in plasma samples on the day of the second vaccine dose (post vaccine 1), when compared to pre-vaccine samples. In addition, plasma IgG levels 4 weeks after second vaccine dose were significantly higher than plasma IgG levels pre-vaccine or on the day of the second dose. In addition, our results show transfer of anti-SARS-CoV2-Receptor Binding Domain (RBD) IgA antibodies to human milk, 3-4 weeks after each dose of the COVID-19 mRNA vaccines (BNT-162b2 and mRNA-1273). The levels of anti-SARS-CoV2-RBD IgA antibody in milk of vaccinated individuals were not significantly different from levels among participants who experienced SARS-CoV-2 infection.

Conclusions and Relevance: Administration of anti-COVID-19 mRNA vaccines during lactation leads to increased anti-SARS-CoV2 IgM and IgG levels in the plasma of lactating mothers and increased anti-SARS-CoV2-RBD IgA levels in human milk. Lactating women who

receive the vaccine should continue breastfeeding their infant human milk to allow continuing transfer of anti-SARS-CoV-2 IgA antibodies to the neonate. Additional studies are needed to evaluate the effect of these vaccines on lactation outcomes and infant health.

Introduction:

Several countries have approved the use of anti-COVID-19 mRNA based vaccines under an emergency use authorization¹. However, the Phase III clinical trials^{2,3} of these vaccines excluded lactating individuals and therefore there is no available data on the efficacy and safety of these vaccines on lactating individuals and their infants. Currently, the World Health Organization (WHO) recommends lactating individuals to obtain the vaccine when eligible and does not advise cessation of breastfeeding following receipt of the vaccine⁴. The Academy of Breastfeeding Medicine (ABM) states that there is little plausible risk that vaccine lipid particles would enter the blood stream and be present in breast tissue, and that nanoparticles or mRNA would be transferred to milk⁵. We recently showed that mRNA from either the Pfizer- BioNTech (BNT-162b2) or Moderna (mRNA-1273) vaccines were not detected in human milk samples collected from vaccinated individuals 4-48 hours after vaccines⁶. However, despite these recommendations and evidence, some mothers have declined vaccination, chosen, or been advised to discard their milk for up to 72 hours post vaccine, or decided to stop breastfeeding earlier than planned due to the lack of solid evidence about the effect of the mRNA vaccine on human milk and infant health. An important benefit of human milk is the presence of IgA antibodies that provide passive immunity to the infant^{7,8}. In addition, anti-SARS-CoV2 antibodies were recently shown to be present in milk from lactating women that were infected with SARS-CoV2^{9,10}. However, there are no data on whether the COVID-19 mRNA vaccines induce the secretion of anti-SARS-CoV-2 antibodies into human milk. Here, we show that milk samples collected 3-8 weeks post BNT-162b2 and mRNA-1273 vaccination contain significantly higher levels of anti-SARS-CoV2-RBD IgA antibodies when compared to pre-vaccine samples. Importantly, we show significant increases in anti-SARS-CoV2 IgG and IgM levels post vaccine in plasma of lactating individuals.

Methods:

The University of California San Francisco (UCSF) institutional review board approved the study (20-32077, 20-30410). Informed consent was obtained from all participants. Detailed methods are described in the Supplemental Materials. Briefly, maternal plasma was analyzed for anti-SARS-CoV-2 IgM and IgG antibodies, which were quantified through Pylon 3D automated immunoassay (considered positive if ≥ 50 relative fluorescence units (RFU)). Blood samples were collected up to 24 hours before first vaccine dose (n=7), up to 24 hours before second dose (n=12), and 4 weeks after second vaccine dose (n=14). At similar time points, human milk samples were collected fresh or frozen immediately after expressing. For some participants, additional milk samples were collected weekly post vaccine. Human milk samples were assayed by ELISA for IgA antibodies specific to SARS-CoV-2 RBD protein.

Results:

We analyzed 7 pre-vaccine, 12 post first vaccine administration, and 14 post second vaccine administration plasma samples from vaccinated lactating individuals. We found a significant increase in anti-SARS-CoV-2 IgM and IgG antibodies post first vaccine administration and post second vaccine administration, when compared to pre-vaccine samples (**Figure 1A and 1B**). Furthermore, anti-SARS-CoV-2 IgG levels at 4 weeks after the second dose were significantly higher (P value <0.0001) compared to samples collected at 3-4 weeks after first dose (collected on the day of second dose) (**Figure 1A**). In contrast, anti-SARS-CoV-2 IgM levels were not significantly higher 4 weeks after the second dose compared to samples collected after the first dose (**Figure 1B**).

In addition, we found significantly higher levels of IgA antibodies specific to SARS-CoV-2 RBD protein in human milk samples collected after the first dose of both vaccines (**Figure 2A and 2B**). Seventeen out of 19 milk samples analysed at the day of the second vaccine dose were

positive for anti- SARS-CoV-2 IgA antibodies. Thirteen out of the 15 milk samples that were analysed 4 weeks after the second dose were positive for anti-SARS-CoV-2 RBD IgA (**Figure 2A and 2B**). We also analyzed 3 milk samples collect from lactating individuals who were previously infected by SARS-CoV-2 virus. Anti-SARS-CoV-2 RBD IgA antibodies levels in milk samples from vaccinated individuals were not significantly different from samples collected after natural SARS-CoV-2 infection (**Figure 2A and 2B**, right columns)

When analyzing serial samples collected from 0 to 64 days after first vaccine administration from 10 patients, we found variation in anti-SARS-CoV-2 RBD IgA antibodies levels in milk between individuals (**Figure 2C and 2D**). In contrast to the significant increase in plasma IgG after the second dose (**Figure 1A**), milk IgA levels largely remained stable 4 weeks after the second dose (**Figure 2C**).

Conclusion:

We show here that administration of anti-COVID-19 mRNA vaccines during lactation leads to a significant increase in anti-SARS-CoV2 IgM and IgG levels in the plasma. Consistent with results from previous studies that showed reduced IgM levels 28 days after COVID-19 infection,¹¹ our results show that IgM levels 4 weeks post second dose administration were not significantly higher compared to their levels after the first dose. Furthermore, our data clearly demonstrate increased anti-SARS-CoV2-RBD IgA levels in human milk consistent with levels found after SARS-CoV-2 infection. Taken together, our findings suggest that anti-COVID-19 vaccination is beneficial for lactating individuals and may also protect their infants.

Our results provide information needed to inform the care of lactating individuals and their infants¹². Although there is expert consensus of minimal or no potential risk for the infant from maternal anti-COVID-19 vaccination^{13,14}, no previous studies have demonstrated specific benefits during lactation. Our results now provide such evidence. Future studies are needed to

determine the degree of protection conferred by these IgA anti-SARS-CoV-2 antibodies. At the present time, our findings suggest that lactating individuals who receive vaccination should continue to breastfeed and chestfeed their infants in order to ensure transfer of anti-SARS-CoV-2 IgA antibodies to their baby that may potentially protect against COVID-19, important even during infancy¹⁵. Health care providers should continue to encourage lactating individuals to breastfeed and chestfeed their infant during and following COVID-19 vaccination.

References:

1. Krause PR, Gruber MF. Emergency Use Authorization of Covid Vaccines — Safety and Efficacy Follow-up Considerations. *N Engl J Med*. 2020;383(19):e107.
doi:10.1056/nejmp2031373
2. Polack FP, Thomas SJ, Kitchin N, et al. Safety and Efficacy of the BNT162b2 mRNA Covid-19 Vaccine. *N Engl J Med*. 2020;383(27):2603-2615.
doi:10.1056/NEJMoa2034577
3. Baden LR, El Sahly HM, Essink B, et al. Efficacy and Safety of the mRNA-1273 SARS-CoV-2 Vaccine. *N Engl J Med*. December 2020. doi:10.1056/nejmoa2035389
4. The Moderna COVID-19 (mRNA-1273) vaccine: what you need to know.
<https://www.who.int/news-room/feature-stories/detail/the-moderna-covid-19-mrna-1273-vaccine-what-you-need-to-know>. Accessed February 13, 2021.
5. ABM Statement: Considerations for COVID-19 Vaccination in Lactation.
<https://abm.memberclicks.net/abm-statement-considerations-for-covid-19-vaccination-in-lactation>. Accessed February 13, 2021.

6. Golan Y, Prah M, Cassidy A, et al. COVID-19 mRNA vaccine is not detected in human milk. *medRxiv*. March 2021:2021.03.05.21252998. doi:10.1101/2021.03.05.21252998
7. Labayo HKM, Pajuelo MJ, Tohma K, et al. Norovirus-specific immunoglobulin A in breast milk for protection against norovirus-associated diarrhea among infants. *EClinicalMedicine*. 2020;27:100561. doi:10.1016/j.eclinm.2020.100561
8. Sadeharju K, Knip M, Virtanen SM, et al. Maternal antibodies in breast milk protect the child from enterovirus infections. *Pediatrics*. 2007;119(5):941-946. doi:10.1542/peds.2006-0780
9. Fox A, Marino J, Amanat F, et al. Robust and Specific Secretory IgA Against SARS-CoV-2 Detected in Human Milk. 2020. doi:10.1016/j.isci.2020.101735
10. Demers-Mathieu V, Dung M, Mathijssen GB, et al. Difference in levels of SARS-CoV-2 S1 and S2 subunits- and nucleocapsid protein-reactive SIgM/IgM, IgG and SIgA/IgA antibodies in human milk. *J Perinatol*. September 2020:1-10. doi:10.1038/s41372-020-00805-w
11. Liu X, Wang J, Xu X, Liao G, Chen Y, Hu CH. Patterns of IgG and IgM antibody response in COVID-19 patients. *Emerg Microbes Infect*. 2020;9(1):1269-1274. doi:10.1080/22221751.2020.1773324
12. Adhikari EH, Spong CY. COVID-19 Vaccination in Pregnant and Lactating Women. *JAMA*. February 2021. doi:10.1001/jama.2021.1658
13. STAFFORD IA, PARCHEM JG, SIBAI BM. The COVID-19 vaccine in pregnancy: risks benefits and recommendations. *Am J Obstet Gynecol*. January 2021.

doi:10.1016/j.ajog.2021.01.022

14. Craig AM, Hughes BL, Swamy GK. Coronavirus disease 2019 vaccines in pregnancy. *Am J Obstet Gynecol MFM*. 2021;3(2):100295. doi:10.1016/j.ajogmf.2020.100295
15. Bhuiyan MU, Stiboy E, Hassan MZ, et al. Epidemiology of COVID-19 infection in young children under five years: A systematic review and meta-analysis. *Vaccine*. 2021;39(4):667-677. doi:10.1016/j.vaccine.2020.11.078

Conflict of interest:

The authors declare no conflicts of interest.

Funding:

These studies were supported by the Marino Family Foundation (to M.P), the Bill and Melinda Gates Foundation (INV-017035 to S.L.G and V.J.F.), the National Institutes of Health (NIAID K23AI127886 to M.P. and NIAID K08AI141728 to S.L.G.), the Weizmann Institute of Science - National Postdoctoral Award Program for Advancing Women in Science (to Y.G.), the International Society for Research In Human Milk and Lactation (ISRHML) Trainee Bridge Fund (to Y.G.), and of the Human Frontier Science Program (to Y.G.).

Figure 1:

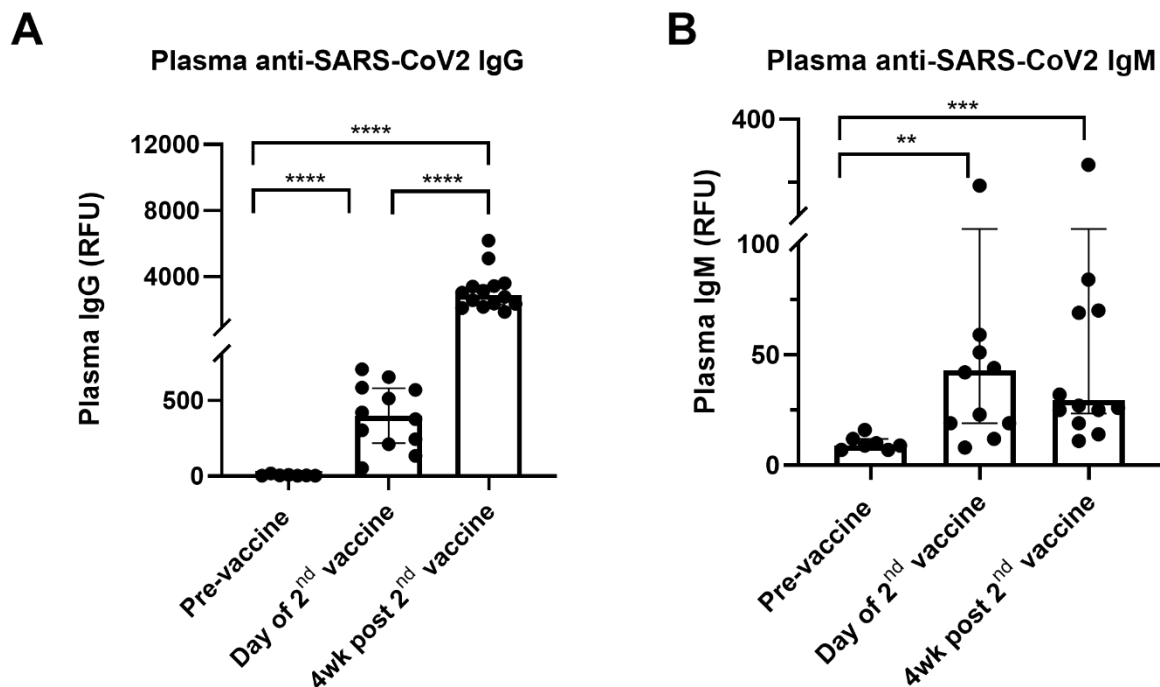


Figure 1: Elevated levels of plasma anti-SARS-CoV2 antibodies in COVID-19 mRNA vaccinated lactating individuals. Anti-SARS-CoV2 IgG (A) and IgM (B) levels in plasma of lactating individuals post COVID-19 mRNA vaccine (n=18, RFU- relative fluorescent units, positive cut-off >50 RFU-relative fluorescent units). Asterisks represents p-values: *= p-value <0.05, **= p-value <0.01, ***= <0.001, ****= <0.0001 as determined by unpaired Mann-Whitney test.

Figure 2:

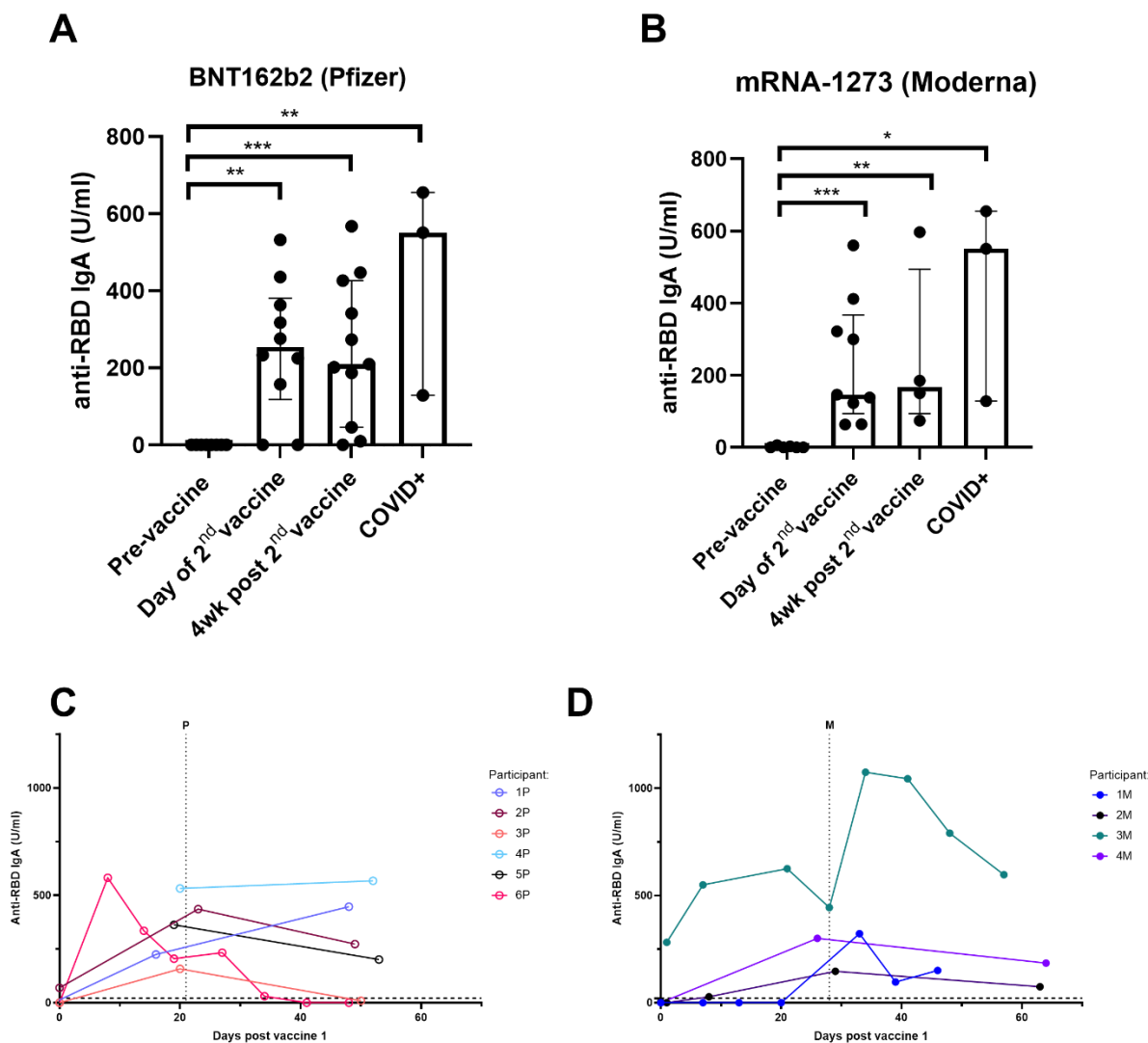


Figure 2: Elevated levels of milk anti-SARS-CoV2 IgA antibodies in COVID-19 mRNA

vaccinated lactating individuals. Milk samples from individuals receiving BNT-162b2 (n=14)

(A) and mRNA-1273 (n=9) (B) anti-COVID-19 vaccines were analysed for anti-SARS-CoV2 IgA

antibodies using ELISA. Asterisks represents p-values: * = p-value <0.05, ** = p-value <0.01, *** =

<0.001 as determined by unpaired Mann-Whitney test. Anti-SARS-CoV2 IgA antibodies levels in

milk at serial time points post first BNT-162b2 (C) and mRNA-1273 (D) vaccine dose

administration. Dashed vertical lines represent the timing of the second dose administration (P- BNT-162b2, M- mRNA-1273). Dashed horizontal lines represent 21.4 U/mL, values above this line were considered positive. Sample identification by participant number and type of vaccine observed (P- BNT-162b2, M- mRNA-1273). Note: first sample from M3 obtained 24h post first vaccine.