

1 **Prognosis of Acute Ischaemic Stroke in Cancer Patients: A National Inpatient Sample**  
2 **Study**

3 Cover title: *Cancer and Stroke Outcomes*

4

5 Tiberiu A Pana<sup>a,b</sup>, MRes (*Research Associate*); Mohamed O Mohamed<sup>a</sup>, MRCP (UK)  
6 (*Doctoral Research Fellow*); Mamas A Mamas<sup>a</sup>, DPhil (*Professor of Cardiology*); Phyo K  
7 Myint<sup>a,b,c</sup>, MD (*Chair in Old Age Medicine*);

8

9 <sup>a</sup>Keele Cardiovascular Research Group, Centre for Prognosis Research, Institute for Primary  
10 Care and Health Sciences, Keele University, Stoke-on-Trent, United Kingdom

11 <sup>b</sup>Institute of Applied Health Sciences, School of Medicine, Medical Sciences & Nutrition,  
12 University of Aberdeen, United Kingdom

13

14

15

16

17

18

19

20

21

22 Word count: 5998

23 Abstract word count: 248

24 Tables 1, Figures 4

25

26

27

28

29

30

31

32 **Correspondence to:**

33 Professor Phyo Kyaw Myint

34 Room 4:013, Polwarth Building

35 School of Medicine, Medical Sciences and Nutrition

36 Foresterhill, Aberdeen

37 AB25 2ZD,

38 Scotland, UK.

39 Tel: +44 (0) 1224 437841,

40 Fax: +44 (0) 1224 43791

41 Mail to: [pkyawmyint@gmail.com](mailto:pkyawmyint@gmail.com)

1 **ABSTRACT**

2 **Background and Purpose.** Whilst cancer is a risk factor for acute ischaemic stroke (AIS), its  
3 impact on AIS prognosis between metastatic and non-metastatic (MC and NMC) disease is  
4 poorly understood. Furthermore, the receipt of intravenous thrombolysis (IVT) and  
5 endovascular thrombectomy (ET) and their outcomes is poorly researched.

6 **Methods.** AIS admissions from the National Inpatient Sample (NIS) were included (October  
7 2015-December 2017). Multivariable logistic regressions adjusting for a wide range of  
8 confounders analysed the relationship between NMC and MC and AIS in-hospital outcomes  
9 (mortality, prolonged hospitalisation >4 days and routine home discharge). Interaction terms  
10 with IVT and ET were also computed to explore their impact amongst cancer patients.

11 **Results.** 221,249 records representative of 1,106,045 admissions were included. There were  
12 38,855 (3.51%) patients with co-morbid cancers: NMC=53.78% and MC=46.22%. NMC was  
13 associated with 23% increased odds of in-hospital mortality (odds ratio (95% confidence  
14 interval) = 1.23 (1.07-1.42)), which was mainly driven by pancreatic and respiratory cancers.  
15 This association was entirely offset by both IVT and ET. MC was associated with 2-fold  
16 increased odds of in-hospital mortality (2.16 (1.90-2.45)), which was mainly driven by  
17 respiratory, pancreatic and colorectal cancers. This association was only offset by ET. Both  
18 NMC and MC were significantly associated with prolonged hospitalisation and decreased  
19 odds of routine discharge.

20 **Conclusions.** Cancer patients are at higher odds of acute adverse outcomes after AIS and  
21 warrant robust primary prevention. IVT and ET improve these outcomes and should thus be  
22 offered routinely unless otherwise contraindicated in this group of stroke patients.

23 **Keywords:** ischaemic stroke; cancer; mortality; revascularisation; thrombolysis;  
24 thrombectomy;

25

1 **NON-STANDARD ABBREVIATIONS AND ACRONYMS**

- 2 AIS - Acute Ischaemic Stroke; ET - Endovascular Thrombectomy; HCUP - Healthcare Cost  
3 and Utilisation Project; ICD-19 - International Classification of Disease – tenth edition; IVT -  
4 Intravenous Thrombolysis; LoS - Length of stay; MC - Metastatic Cancer; NIS - National  
5 Inpatient Sample; NMC - Non-metastatic Cancer; US - United States;

## 1 INTRODUCTION

2 Malignancy is associated with increased risk of acute ischaemic stroke (AIS)<sup>1</sup>. This is  
3 mediated through a variety of mechanisms, including hypercoagulability<sup>2</sup> and shared risk  
4 factors<sup>1</sup>. Cancer is therefore important to consider in AIS, as it may not only be more  
5 prevalent amongst AIS patients<sup>3</sup>, but also be associated with adverse outcomes<sup>4,5</sup>. Despite  
6 that fact that cancer is a heterogenous disease, the distribution of organ-specific primary  
7 cancer types amongst AIS patients and the magnitude of the association between each cancer  
8 type and adverse AIS outcomes remain largely unknown.

9 Revascularisation therapies (intravenous thrombolysis – IVT and endovascular  
10 thrombectomy - ET) significantly improve AIS outcomes<sup>6,7</sup> and are thus recommended  
11 routinely in eligible patients<sup>8</sup>. Nevertheless, co-morbid cancer may hinder their use given that  
12 this population is more likely to exhibit contraindications to IVT or ET<sup>1</sup>. Current guidelines  
13 recommend IVT in AIS patients with systemic malignancy provided they have a life  
14 expectancy >6 months and no contraindications<sup>8</sup>. These recommendations are based on  
15 limited evidence, as landmark randomised controlled trials studying IVT<sup>9-12</sup> or ET<sup>7</sup> have  
16 excluded cancer patients. Previous smaller scale observational studies of AIS patients with  
17 cancer have found no increased haemorrhagic complications or mortality associated with  
18 IVT<sup>13-15</sup>. Nevertheless, guidelines currently provide no specific recommendations regarding  
19 ET for this population<sup>8</sup>, with the efficacy and safety of ET amongst AIS patients with cancer  
20 being largely unclear. While several small retrospective studies have found no association  
21 between cancer and adverse outcomes in AIS patients undergoing ET<sup>16,17</sup>, others have  
22 identified significantly higher mortality in cancer patients<sup>18</sup>.

23 This drives the need for a comprehensive description of the association between  
24 cancer and AIS outcomes in contemporary clinical practice and whether revascularisation  
25 therapies have an effect on these outcomes. In this study of a representative sample of AIS

- 1 admissions in the United States (US) between 2015-2017, we sought examine the prevalence
- 2 of comorbid cancer among patients with AIS and its association with in-hospital outcomes,
- 3 also stratifying by metastatic disease. We also aimed to examine the effect of IVT/ET on
- 4 outcomes in cancer patients through the use of interaction terms.

## 1   **METHODS**

2           This study was conducted in accordance with the principles of the Declaration of  
3   Helsinki (1975) and later amendments. The data that support the findings of this study are  
4   available from the corresponding author upon reasonable request.

### 5   **Data source and inclusion criteria**

6           The National Inpatient Sample (NIS) is a publicly available database containing >7  
7   million annual hospital admission records. NIS contains admission records representing a 20%  
8   stratified sample of all community hospital admissions in the United States. Using the  
9   provided sampling weights, the NIS data can be used to provide national estimates for the  
10   sampling population, representative of ~95% of the US population<sup>19,20</sup>. Prior to undertaking  
11   this project, all authors completed the Healthcare Cost and Utilisation Project (HCUP) Data  
12   Use Agreement Training Tool. All authors also read and signed the Data Use Agreement for  
13   Nationwide Databases. As the NIS is publicly available and contains no patient identifiable  
14   information, no ethical approval was needed. Using data files containing annual admissions  
15   between 2015-2017, all records with a primary diagnosis of ischaemic stroke (*International*  
16   *Classification of Disease – tenth edition* (ICD-10) codes I63.0-I63.9) were extracted. Only  
17   cases admitted between October 2015-December 2017 were included due to a change in co-  
18   morbidity coding (ICD-9 to ICD-10) occurring after September 2015<sup>20</sup>. Elective admissions  
19   and those with missing data on key variables were excluded.

### 20   **Statistical Analysis**

21           All analyses were performed using Stata 15.1SE, Stata Statistical Software. A 5%  
22   threshold of statistical significance was utilised for all analyses ( $P < 0.05$ ). Analyses were  
23   performed following HCUP guidelines<sup>21</sup>, utilising the provided discharge weights as  
24   probability weights and survey data analysis techniques stratifying by NIS stratum and year

1 of admission<sup>22</sup> in order to account for patient clustering within hospitals and produce US-  
2 wide estimates<sup>23</sup>.

### 3 *Outcomes*

4 The following outcomes were analysed: (1) in-hospital mortality, (2) prolonged  
5 hospital stay in excess of 4 days and (3) routine discharge from hospital. Vital status upon  
6 hospital discharge (dead/alive) and the length of stay (LoS) in hospital are provided as  
7 standard variables in the NIS<sup>24,25</sup>. Prolonged hospitalisation was defined as LoS >4 days,  
8 according to expert clinical opinion and previous studies assessing ischaemic stroke  
9 outcomes amongst patients admitted to hospital in the United States<sup>26</sup>. A dichotomous  
10 variable indicating patients hospitalised for >4 days was subsequently used as an outcome for  
11 LoS analyses. Discharge status was coded using the provided discharge destination<sup>27</sup>. All  
12 records of patients who were discharged against medical advice and those discharged to an  
13 unknown destination were excluded from the analyses prior to weighting (n=2187 (0.99 %)),  
14 allowing estimates for this particular outcome to be provided for 1,095,110 (99.01%) of AIS  
15 patients. Discharge destination was then dichotomised into routine discharges and other  
16 discharges ('home health care', 'short-term hospital', 'other facilities including intermediate  
17 care and skilled nursing home' and 'died in hospital'). The 'other discharges' category was  
18 subsequently used as a reference category in all analyses evaluating discharge destination.

### 19 *Exposures and confounders*

20 Co-morbid cancer (non-metastatic and metastatic) as well as the organ-specific types  
21 were the exposures of interest. All models were adjusted for the following confounders: age,  
22 sex, ethnicity, Elixhauser co-morbidities (congestive heart failure, valvular disease,  
23 pulmonary circulatory disease, peripheral vascular disease, paralysis, other neurological  
24 disorders, chronic pulmonary disease, diabetes, hypothyroidism, renal failure, liver disease,  
25 peptic ulcer disease, acquired immune deficiency syndrome, rheumatoid arthritis,

1 coagulopathy, obesity, weight loss, fluid and electrolyte disorders, anaemia, alcohol abuse,  
2 drug abuse, psychosis, depression and hypertension), previous history of cancer,  
3 haematological malignancies, other co-morbidities (dyslipidaemia, smoking, Parkinson  
4 disease, coronary heart disease, all-cause bleeding, pulmonary embolism, deep venous  
5 thrombosis, atrial fibrillation, arrhythmias other than atrial fibrillation, pneumonia (incl.  
6 aspiration), shock, previous cerebrovascular disease), hospital bedsize, location & teaching  
7 status and revascularisation therapy (thrombolysis, thrombectomy). Adjusting co-variates  
8 were selected based on clinical judgement and previous literature<sup>5,14,15,28</sup>.

9 Co-morbid non-metastatic and metastatic cancer diagnoses were identified using the  
10 Elixhauser co-morbidities<sup>29</sup>: solid tumour without metastases and metastatic cancer,  
11 respectively. Specific cancer types were identified using the Clinical Classification Software  
12 Refined (CCSR) codes (Supplemental Table I - please see  
13 <https://www.ahajournals.org/journal/str>)<sup>30</sup>. Previous history of cancer was identified using  
14 ICD10 codes Z85.x and Z86.0x. Elixhauser co-morbidities were determined using the HCUP  
15 Elixhauser co-morbidity software version 2020.1<sup>29</sup>. Co-morbid conditions other than the  
16 Elixhauser co-morbidities were identified using ICD-10 codes (Supplemental Table II -  
17 please see <https://www.ahajournals.org/journal/str>).

18

19

## 20 *Descriptive Statistics*

21 Patient characteristics were compared between AIS patients without cancer, those  
22 with non-metastatic cancer and those with metastatic disease. One-way analysis of variance  
23 and Pearson's  $\chi^2$  test were employed to compare patient characteristics for continuous and  
24 categorical variables, respectively. The distribution of each primary cancer type amongst the  
25 included sample as well as the proportion of metastatic disease amongst each cancer type



1 were determined. Patient characteristics were then also compared between AIS patients with  
2 the 5 most common types of primary cancers previously identified. No between-group tests  
3 of statistical significance were performed for these comparisons as the groups were not  
4 mutually exclusive.

5

#### 6 *Association between prevalent cancer and odds of receiving revascularisation therapy*

7       Multivariable logistic regressions were employed to analyse the relationship between  
8 co-morbid non-metastatic and metastatic cancer and the odds of receiving IVT and ET in  
9 hospital. All models were adjusted for the covariates listed above, with the exception of IVT  
10 or ET when this variable was used as the outcome.

11

#### 12 *Association between non-metastatic and metastatic cancer and in-hospital outcomes*

13       Multivariable logistic regressions were employed to analyse the relationship between  
14 co-morbid non-metastatic and metastatic cancer and in-hospital outcomes. Separate models  
15 containing interaction terms with IVT and ET were also computed to determine whether  
16 these relationships were modified by revascularisation therapies. All models were adjusted  
17 for the covariates listed above.

18

#### 19 *Association between the five most common primary cancer types and in-hospital outcomes*

20       Multivariable logistic regressions were employed to analyse the relationship between  
21 the five most common primary cancer types and in-hospital outcomes, stratifying each cancer  
22 type by the presence of metastases were also computed. All five cancer types were  
23 simultaneously introduced in the same model. All models were adjusted for the covariates  
24 listed above as well as other co-morbid cancer types.

## 1   **RESULTS**

2           Figure 1 details the study population. Out of 230,177 records extracted with a primary  
3   diagnosis of ischaemic stroke between October 2015-December 2017, a total of 8708 elective  
4   admission records as well as 220 records with missing data were excluded, yielding a total of  
5   221,249 included records. After the application of sampling weights and the exclusion of  
6   strata with single sampling units, the included records were used to provide estimates for the  
7   population from which they were sampled: 1,106,045 patients admitted with a primary  
8   diagnosis of AIS.

9

### 10   *Descriptive Statistics*

11           Figure 2 details the distribution of primary cancer types amongst the 38,855 AIS  
12   patients with co-morbid cancer, representing 3.51% of the entire included sample. The five  
13   most common types were: respiratory (9490 (24.42%)), prostate (4960 (12.77%)), breast  
14   (3375 (8.69%)), pancreatic (2640 (6.79%)) and colorectal cancers (2490 (6.41%)). There  
15   were 4750 (50.05%) metastatic respiratory cancer patients, 1250 (25.20%) metastatic prostate  
16   cancer patients, 1110 (32.89%) metastatic breast cancer patients, 1875 (71.02%) metastatic  
17   pancreatic cancer patients and 985 (39.56%) metastatic colorectal cancer patients.

18           Table 1 and Supplemental Table III (please see  
19   <https://www.ahajournals.org/journal/str>) detail the characteristics of the included patient  
20   population, representative of 1,106,045 AIS patients. The median (interquartile range) age  
21   was 72 (61-82) years and 50.41% were female. The median (interquartile range) length of  
22   stay was 3 (2-6) days. There were 20,895 (1.89%) patients with non-metastatic cancer and  
23   17,960 (1.62%) with metastatic cancer. Median age ranged between 70 and 75 years, highest  
24   among those with non-metastatic cancer and lowest amongst those with metastatic cancer.  
25   The highest proportion of females was recorded amongst patients with metastatic cancer

1 (51.03%), followed by those without active cancer (50.47%) and those with non-metastatic  
2 cancer (46.88%). Compared to patients without cancer, those with cancer had higher rates of  
3 prevalent chronic pulmonary disease, liver disease, coagulopathy and anaemia, but lower  
4 rates of congestive heart disease and diabetes. Compared to patients without cancer, those  
5 with cancer had higher rates of in-hospital mortality, prolonged hospitalisation and lower  
6 rates of routine discharge.

7 Supplemental Table IV (please see <https://www.ahajournals.org/journal/str>) details  
8 the characteristics of the included patients with the five most common co-morbid cancer  
9 types. Patients with prostate cancer were oldest, median (interquartile range) – 79 (71-85)  
10 years, followed by those with breast cancer – 74 (67-83) years, colorectal cancer – 74 (65-82)  
11 years, respiratory cancers – 71 (63-79) years and pancreatic cancer 71 (63-77) years. Patients  
12 with pancreatic cancer had the highest rate of in-hospital mortality (10.61%), followed by  
13 respiratory cancers (10.17%), colorectal cancer (6.22%), breast cancer (5.63%) and prostate  
14 cancer (3.73%).

15

#### 16 *Association between prevalent cancer and odds of receiving revascularisation therapy*

17 Supplemental Table V (please see <https://www.ahajournals.org/journal/str>) details the  
18 results of the multivariable logistic regressions evaluating the associations between non-  
19 metastatic and metastatic cancer and the odds of receiving thrombolysis or thrombectomy.  
20 Compared to patients without cancer, those with non-metastatic cancer had lower odds of  
21 receiving both IVT (odds ratio (95% confidence interval) – 0.77 (0.66-0.90)) and ET (0.80  
22 (0.63-0.9994)). Compared to patients without cancer, those with metastatic cancer had lower  
23 odds of receiving IVT (0.39 (0.32-0.47)) but not ET (0.87 (0.69-1.09)).

24

#### 25 *Association between non-metastatic and metastatic cancer and in-hospital outcomes*

1           Figure 3 details the results of the multivariable logistic regressions assessing the  
2           associations between non-metastatic and metastatic cancer and in-hospital outcomes. Non-  
3           metastatic cancer was associated with a 23% increase in the odds of in-hospital mortality  
4           (odds ratio (95% confidence interval) – 1.23 (1.07-1.42)). This association exhibited  
5           significant interactions with IVT and ET: non-metastatic cancer was not associated with  
6           increased in-hospital mortality amongst AIS patients undergoing either IVT or ET. Metastatic  
7           cancer was associated with a 2-fold increase in the odds of in-hospital mortality: 2.16 (1.90-  
8           2.45). This association also exhibited a significant interaction with ET, but not IVT:  
9           metastatic cancer was not associated with increased in-hospital mortality amongst AIS  
10          patients undergoing ET. Non-metastatic and metastatic cancers were also associated with  
11          increased odds of prolonged hospitalisation and decreased odds of routine discharge.

12

13          *Association between the five most common primary cancer types and in-hospital outcomes*

14          Figure 4 details the results of the multivariable logistic regression assessing the  
15          association between the five most common primary cancer types and in-hospital outcomes,  
16          stratifying by metastatic disease status. Respiratory cancers (both non-metastatic – 1.88  
17          (1.48-2.40) and metastatic – 2.40 (1.90-3.02)), pancreatic cancers (both non-metastatic (1.96  
18          (1.04-3.71)) and metastatic – 2.33 (1.61-3.37)) and metastatic colorectal cancer (2.08 (1.21-  
19          3.58)) were associated with significantly increased in-hospital mortality. There were no  
20          associations between metastatic prostate cancer, breast cancer (both non-metastatic and  
21          metastatic) and non-metastatic colorectal cancer and in-hospital mortality. Non-metastatic  
22          prostate cancer was associated with decreased odds of in-hospital mortality (0.62 (0.40-0.96)).  
23          Respiratory cancers, metastatic pancreatic and metastatic colorectal cancer were associated  
24          with increased odds of prolonged hospitalisation. Respiratory cancers, metastatic prostate

1 cancer, pancreatic cancer (both non-metastatic and metastatic) and metastatic colorectal  
2 cancer were associated with decreased odds of routine discharge.

3

4

## 5 **DISCUSSION**

6 In this study including a sample representative of 1,106,045 acute ischemic stroke  
7 patients admitted between 2015-2017, we have determined the distribution of prevalent  
8 cancers as well as their association with in-hospital outcomes. We have also determined how  
9 these associations are influenced by the use of revascularisation therapies.

10 The five most common cancer types were: respiratory (24.42%), prostate (12.77%),  
11 breast (8.69%), pancreatic (6.79%) and colorectal cancers (6.41%). We report significant  
12 differences in stroke treatment according to cancer diagnosis, with patients with non-  
13 metastatic cancer at 23% lower odds of receiving IVT and 20% lower odds of receiving ET.  
14 The disparities in treatments were even greater in patients with metastatic cancer who were at  
15 61% lower odds of receiving IVT compared to patients without cancer. Patients with cancer  
16 were at increased risk of adverse AIS outcomes. Non-metastatic cancer was associated with  
17 23% increased odds of in-hospital mortality, which was mainly driven by pancreatic (96%  
18 increased odds) and respiratory (88% increased odds) cancers. This association was entirely  
19 offset by both IVT and ET. Metastatic cancer was associated with 2-fold increased odds of  
20 in-hospital mortality, which was mainly driven by respiratory (2.43-fold increase), pancreatic  
21 (2.37-fold increase) and colorectal (2.11-fold) cancers. This association was only offset by  
22 ET. Non-metastatic and metastatic cancers were also associated with increased odds of  
23 prolonged hospitalisation and decreased odds of routine discharge.

24 The association between co-morbid cancer and AIS outcomes has been previously  
25 evaluated on smaller, single-centre cohorts<sup>4,31,32</sup>. A previous investigation including ~5000

1 AIS patients out of whom 1.46% had co-morbid cancer found a 3.7-fold increase in the odds  
2 of in-hospital mortality<sup>4</sup>. Another study including 468 AIS patients with co-morbid cancer  
3 found that metastatic disease was independently associated with a 4.5-fold increase in the risk  
4 of 6-month mortality compared to non-metastatic cancers<sup>32</sup>. Furthermore, gastric and  
5 pancreatic cancers were associated with increased mortality risk compared to other cancer  
6 types<sup>32</sup>. Our results complement these previous findings by providing a comprehensive  
7 description of the association between these disease entities based on a large, national real-  
8 world sample of AIS patients and highlight disparities in provision of evidence-based  
9 therapies.

10 Furthermore, our results provide additional insight into these relationships by  
11 exploring differences based on the presence of metastases and between different primary  
12 types. We found 23% increased odds of in-hospital mortality associated with non-metastatic  
13 cancer, which may be attributed to a higher proportion of cryptogenic strokes<sup>4</sup> with worse  
14 prognosis<sup>33</sup> and increased hypercoagulability leading to complications such as venous  
15 thromboembolism, recurrent stroke<sup>34</sup> and a greater risk of haemorrhagic transformation.  
16 Another important contributor to the increased risk of adverse outcomes was significant  
17 differences in the receipt of IVT and ET, with patients with cancer consistently less likely to  
18 receive revascularisation therapies.

19 Previous large clinical trials assessing the use of IVT for AIS revascularisation  
20 provide no specific information regarding AIS patients with cancer<sup>9-12</sup>. Nevertheless, several  
21 observational studies including AIS patients with co-morbid cancer have found no  
22 association between IVT and in-hospital mortality, major bleeding or functional  
23 outcomes<sup>13,14,35-38</sup>, while current guidelines recommend IVT in patients with systemic  
24 malignancy provided they have a life expectancy >6 months and no other contraindications<sup>8</sup>.  
25 We found that even after comprehensive adjustment, patients with co-morbid cancer were

1 less likely to receive IVT, suggesting that the lower rates of IVT in this population may not  
2 be fully explained by a higher prevalence of contraindications. This may reflect the fact that  
3 treating clinicians may be hesitant to use IVT solely based on cancer status, even in those  
4 with non-metastatic disease.

5 Our work shows for the first time that IVT offset the increased in-hospital mortality  
6 and decreased odds of routine discharge associated with non-metastatic cancer, providing  
7 supportive evidence for IVT therapy in these patients. Nevertheless, the associations between  
8 metastatic cancer and adverse in-hospital outcomes were not offset by IVT, suggesting that  
9 AIS patients with metastatic cancer may not fully benefit from this therapy. This may relate  
10 to the fact that strokes in this patient group may also relate to the presence of cerebral  
11 metastases and not due to an in-situ thrombosis in the cerebral vessels, or that there was a  
12 greater likelihood of haemorrhagic transformation that offset any benefit with thrombolysis.

13 As with IVT, clinical trials assessing the use of ET in AIS provide no specific data  
14 regarding its use in cancer patients<sup>7</sup>. Nevertheless, a few small retrospective observational  
15 studies have assessed the use of ET in Asian AIS patients with cancer, reaching different  
16 conclusions<sup>16,17,32</sup>. While similar acute outcomes were found amongst AIS patients with and  
17 without co-morbid cancer undergoing ET in two studies<sup>16,17</sup>, a third study found significantly  
18 worse functional outcomes in cancer patients treated with ET<sup>18</sup>. Furthermore, it has been  
19 postulated that AIS patients with cancer may have different clot composition, which may  
20 hinder successful recanalisation in this population<sup>16</sup>.

21 Our analysis shows that patients with non-metastatic cancer were significantly less  
22 likely to receive ET, while those with metastatic disease were equally likely to receive ET  
23 compared to patients without cancer. These differences may reflect the fact that metastatic  
24 cancer patients may be more likely to present with cardioembolic strokes caused large artery  
25 occlusion, rendering them more likely candidates for ET. Nevertheless, in the absence of

1 more granular stroke syndrome data, we could not assess this hypothesis and further research  
2 is thus warranted. Our study provides for the first time an analysis of the relationship between  
3 cancer and ET in AIS patients using a large, real-world and contemporary sample. ET offset  
4 the excess odds of in-hospital adverse outcomes associated both with non-metastatic and  
5 metastatic cancers, suggesting that ET may be a successful strategy in eligible patients with  
6 cancer, especially in those with metastases who may not fully benefit from IVT.

7         Our study has several strengths, such as including a large sample representative  
8 of >1 million AIS patients admitted between late 2015-2017 across the United States as well  
9 as having adjusted for a wide range of important confounders. Our results thus reflect  
10 contemporary stroke management, including the more widespread adoption of ET and thus  
11 allow the generalisation of clinical implications to patients with similar characteristics. Our  
12 findings show that both non-metastatic and metastatic disease are associated with significant  
13 increases in in-hospital mortality, prolonged hospitalisation and decreased odds of routine  
14 home discharge. This highlights that cancer patients warrant thorough primary prevention,  
15 since they are not only more likely to suffer an incident stroke, but also at higher odds of  
16 acute adverse stroke outcomes. Given our large sample size, our study is able to provide more  
17 granular information regarding individual associations between each primary cancer type and  
18 adverse acute outcomes.

19         Our study highlights inequalities in the receipt of evidence-based reperfusion  
20 therapies in cancer patients. Such differences have also been described in other cardiovascular  
21 conditions such as myocardial infarction<sup>28</sup>. We report that cancer patients offered treatment  
22 with IVT or ET may derive a benefit and that IVT may offset the non-metastatic cancer-  
23 associated excess odds of adverse outcomes. Furthermore, ET offsets the excess odds  
24 associated with both non-metastatic and metastatic disease. Along with previous findings, our



1 study also suggests that co-morbid cancer should not represent a contraindication to AIS  
2 revascularisation therapies in itself.

3 Naturally, our study also has limitations. Having used administrative data, we defined  
4 AIS using ICD-10 codes and thus lacked more detailed information regarding stroke severity,  
5 or classification. Nevertheless, all analyses were adjusted for a wide range of confounders  
6 including some important predictors of severe or cardioembolic stroke, such as atrial  
7 fibrillation and heart failure<sup>39,40</sup>, which may have partly accounted for stroke severity or  
8 classification. Furthermore, we also lacked more information regarding cancer staging except  
9 for metastases. We were thus unable to further stratify our analyses by cancer stage. Our  
10 database also did not capture treatments such as antithrombotic therapy, which may  
11 contribute to the differences in outcomes. Finally, our study only assessed in-hospital  
12 outcomes and further research including is also required to characterise the long-term stroke  
13 outcomes after hospital discharge associated with co-morbid cancer as well as their  
14 interaction with revascularisation strategies.

15 In conclusion, in this study of a sample representative of 1.1 million AIS admissions  
16 across the United States between 2015-2017, we reported that patients with cancer represent  
17 one in thirty acute stroke admissions in the United States and are associated with an increased  
18 risk of mortality. We also report that even after adjustment for differences in comorbidity,  
19 patients with cancer are less likely to be offered revascularisation therapies. These disparities  
20 in care may contribute to some of the observed adverse outcomes associated with a cancer  
21 diagnosis. Nevertheless, IVT offset the non-metastatic cancer-associated excess odds of  
22 mortality, while ET offset both the non-metastatic and metastatic cancer-associated excess  
23 odds of mortality. Both non-metastatic and metastatic cancers were associated with increased  
24 odds of prolonged hospitalisation and decreased odds of routine discharge. IVT and ET are

1 useful strategies to improve in-hospital outcomes in this population and should be offered  
2 routinely in cancer patients unless otherwise contraindicated.

3

#### 4 **ACKNOWLEDGEMENTS**

5 We thank Dr Jesus Perdomo-Lampignano for his assistance with the figures. We also  
6 acknowledge the HCUP Data Partners ([https://www.hcup-](https://www.hcup-us.ahrq.gov/db/hcupdatapartners.jsp)  
7 [us.ahrq.gov/db/hcupdatapartners.jsp](https://www.hcup-us.ahrq.gov/db/hcupdatapartners.jsp)). TAP, PKM and MAM conceived the study. Data were  
8 analysed by TAP. TAP and PKM drafted the article, and all the authors contributed to writing  
9 the article. PKM is the guarantor.

10

#### 11 **SOURCES OF FUNDING**

12 None.

13

#### 14 **CONFLICT OF INTEREST**

15 None.

16

#### 17 **SUPPLEMENTAL MATERIALS**

18 Supplemental Tables I-V.

19

20

## 1 REFERENCES

- 2 1. Navi BB, Iadecola C. Ischemic stroke in cancer patients: A review of an  
3 underappreciated pathology. *Ann. Neurol.* 2018;83:873–883.
- 4 2. Navi BB, Reiner AS, Kamel H, Iadecola C, Elkind MS V, Panageas KS, DeAngelis  
5 LM. Association between incident cancer and subsequent stroke. *Ann. Neurol.*  
6 2015;77:291–300.
- 7 3. Wilbers J, Sondag L, Mulder S, Siegerink B, van Dijk EJ. Cancer prevalence higher in  
8 stroke patients than in the general population: the Dutch String-of-Pearls Institute (PSI)  
9 Stroke study. *Eur. J. Neurol.* 2020;27:85–91.
- 10 4. Kneihsl M, Enzinger C, Wunsch G, Khalil M, Culea V, Urbanic-Purkart T, Payer F,  
11 Niederkorn K, Fazekas F, Gattringer T. Poor short-term outcome in patients with  
12 ischaemic stroke and active cancer. *J. Neurol.* 2016;263:150–156.
- 13 5. Corraini P, Szepligeti SK, Henderson VW, Ording AG, Horvath-Puho E, Sorensen HT.  
14 Comorbidity and the increased mortality after hospitalization for stroke: a population-  
15 based cohort study. *J. Thromb. Haemost.* 2018;16:242–252.
- 16 6. Wardlaw JM, Murray V, Berge E, del Zoppo GJ. Thrombolysis for acute ischaemic  
17 stroke. *Cochrane database Syst. Rev.* 2014;CD000213.
- 18 7. Goyal M, Menon BK, van Zwam WH, Dippel DWJ, Mitchell PJ, Demchuk AM,  
19 Davalos A, Majoie CBLM, van der Lugt A, de Miquel MA, et al. Endovascular  
20 thrombectomy after large-vessel ischaemic stroke: a meta- analysis of individual  
21 patient data from five randomised trials. *Lancet (London, England).* 2016;387:1723–  
22 1731.
- 23 8. Powers WJ, Rabinstein AA, Ackerson T, Adeoye OM, Bambakidis NC, Becker K,  
24 Biller J, Brown M, Demaerschalk BM, Hoh B, et al. Guidelines for the Early  
25 Management of Patients With Acute Ischemic Stroke: 2019 Update to the 2018

- 1 Guidelines for the Early Management of Acute Ischemic Stroke: A Guideline for  
2 Healthcare Professionals From the American Heart Association/American Stroke .  
3 Stroke. 2019;50:e344–e418.
- 4 9. Hacke W, Kaste M, Bluhmki E, Brozman M, Davalos A, Guidetti D, Larrue V, Lees  
5 KR, Medeghri Z, Machnig T, et al. Thrombolysis with alteplase 3 to 4.5 hours after  
6 acute ischemic stroke. *N. Engl. J. Med.* 2008;359:1317–1329.
- 7 10. National Institute of Neurological Disorders and Stroke rt-PA Stroke Study Group.  
8 Tissue plasminogen activator for acute ischemic stroke. *N. Engl. J. Med.*  
9 1995;333:1581–1587.
- 10 11. Sandercock P, Wardlaw JM, Lindley RI, Dennis M, Cohen G, Murray G, Innes K,  
11 Venables G, Czlonkowska A, Kobayashi A, et al. The benefits and harms of  
12 intravenous thrombolysis with recombinant tissue plasminogen activator within 6 h of  
13 acute ischaemic stroke (the third international stroke trial [IST-3]): a randomised  
14 controlled trial. *Lancet (London, England)*. 2012;379:2352–2363.
- 15 12. Bluhmki E, Chamorro A, Davalos A, Machnig T, Sauce C, Wahlgren N, Wardlaw J,  
16 Hacke W. Stroke treatment with alteplase given 3.0–4.5 h after onset of acute  
17 ischaemic stroke (ECASS III): additional outcomes and subgroup analysis of a  
18 randomised controlled trial. *Lancet. Neurol.* 2009;8:1095–1102.
- 19 13. Inohara T, Liang L, Kosinski AS, Smith EE, Schwamm LH, Hernandez AF, Bhatt DL,  
20 Fonarow GC, Peterson ED, Xian Y. Thrombolytic therapy in older acute ischemic  
21 stroke patients with gastrointestinal malignancy or recent bleeding. *Eur. stroke J.*  
22 2020;5:47–55.
- 23 14. Weeda ER, Bohm N. Association between comorbid cancer and outcomes among  
24 admissions for acute ischemic stroke receiving systemic thrombolysis. *Int. J. Stroke.*  
25 2019;14:48–52.

- 1 15. Murthy SB, Karanth S, Shah S, Shastri A, Rao CPV, Bershad EM, Suarez JI.  
2 Thrombolysis for acute ischemic stroke in patients with cancer: a population study.  
3 *Stroke*. 2013;44:3573–3576.
- 4 16. Jung S, Jung C, Hyoung Kim J, Se Choi B, Jung Bae Y, Sunwoo L, Geol Woo H,  
5 Young Chang J, Joon Kim B, Han M-K, et al. Procedural and clinical outcomes of  
6 endovascular recanalization therapy in patients with cancer-related stroke. *Interv.*  
7 *Neuroradiol*. 2018;24:520–528.
- 8 17. Cho B-H, Yoon W, Kim J-T, Choi K-H, Kang K-W, Lee J-H, Cho K-H, Park M-S.  
9 Outcomes of endovascular treatment in acute ischemic stroke patients with current  
10 malignancy. *Neurol. Sci*. 2020;41:379–385.
- 11 18. Lee D, Lee DH, Suh DC, Kwon HS, Jeong D-E, Kim J-G, Lee J-S, Kim JS, Kang D-  
12 W, Jeon S-B, et al. Intra-arterial thrombectomy for acute ischaemic stroke patients  
13 with active cancer. *J. Neurol*. 2019;266:2286–2293.
- 14 19. Mohamed MO, Kirchhof P, Vidovich M, Savage M, Rashid M, Kwok CS, Thomas M,  
15 El Omar O, Al Ayoubi F, Fischman DL, et al. Effect of Concomitant Atrial Fibrillation  
16 on In-Hospital Outcomes of Non- ST-Elevation-Acute Coronary Syndrome-Related  
17 Hospitalizations in the United States. *Am. J. Cardiol*. 2019;124:465–475.
- 18 20. (HCUP) Healthcare Cost and Utilization Project. NIS Database Documentation  
19 [Internet]. Agency Healthc. Res. Qual. Rockville, MD. 2018 [cited 2020 Apr  
20 28];Available from: [https://www.hcup-](https://www.hcup-us.ahrq.gov/db/nation/nis/nisdbdocumentation.jsp)  
21 [us.ahrq.gov/db/nation/nis/nisdbdocumentation.jsp](https://www.hcup-us.ahrq.gov/db/nation/nis/nisdbdocumentation.jsp)
- 22 21. (HCUP) Healthcare Cost and Utilization Project. Checklist for Working with the NIS  
23 [Internet]. Agency Healthc. Res. Qual. Rockville, MD. 2017 [cited 2020 Apr  
24 28];Available from: [www.hcup-us.ahrq.gov/db/nation/nis/nischecklist.jsp](http://www.hcup-us.ahrq.gov/db/nation/nis/nischecklist.jsp).
- 25 22. (HCUP) Healthcare Cost and Utilization Project. HCUP NIS Description of Data

- 1 Elements [Internet]. Agency Healthc. Res. Qual. Rockville, MD. 2008 [cited 2020 Apr  
2 28];Available from: [www.hcup-us.ahrq.gov/db/vars/nis\\_stratum/nisnote.jsp](http://www.hcup-us.ahrq.gov/db/vars/nis_stratum/nisnote.jsp).
- 3 23. Houchens R, Ross D, Elixhauser A. Final Report on Calculating National Inpatient  
4 Sample (NIS) Variances for Data Years 2012 and Later. 2015;
- 5 24. (HCUP) Healthcare Cost and Utilization Project. HCUP NIS Description of Data  
6 Elements [Internet]. Agency Healthc. Res. Qual. Rockville, MD. 2008 [cited 2020 Jun  
7 28];Available from: <https://www.hcup-us.ahrq.gov/db/vars/died/nisnote.jsp>
- 8 25. (HCUP) Healthcare Cost and Utilization Project. HCUP NIS Description of Data  
9 Elements [Internet]. Agency Healthc. Res. Qual. Rockville, MD. 2008 [cited 2020 Jun  
10 28];Available from: <https://www.hcup-us.ahrq.gov/db/vars/los/nisnote.jsp>
- 11 26. Myint PK, Sheng S, Xian Y, Matsouaka RA, Reeves MJ, Saver JL, Bhatt DL,  
12 Fonarow GC, Schwamm LH, Smith EE. Shock Index Predicts Patient-Related Clinical  
13 Outcomes in Stroke. *J. Am. Heart Assoc.* 2018;7:e007581.
- 14 27. (HCUP) Healthcare Cost and Utilization Project. HCUP NIS Description of Data  
15 Elements [Internet]. Agency Healthc. Res. Qual. Rockville, MD. 2008 [cited 2020 Apr  
16 28];Available from: [www.hcup-us.ahrq.gov/db/vars/dispuniform/nisnote.jsp](http://www.hcup-us.ahrq.gov/db/vars/dispuniform/nisnote.jsp).
- 17 28. Bharadwaj A, Potts J, Mohamed MO, Parwani P, Swamy P, Lopez-Mattei JC, Rashid  
18 M, Kwok CS, Fischman DL, Vassiliou VS, et al. Acute myocardial infarction  
19 treatments and outcomes in 6.5 million patients with a current or historical diagnosis  
20 of cancer in the USA. *Eur. Heart J.* 2020;41:2183–2193.
- 21 29. (HCUP) Healthcare Cost and Utilization Project. Tools Archive for Elixhauser  
22 Comorbidity Software Refined for ICD-10-CM [Internet]. Agency Healthc. Res. Qual.  
23 Rockville, MD. 2020 [cited 2021 Jan 30];Available from: [https://www.hcup-  
24 us.ahrq.gov/toolssoftware/comorbidityicd10/comorbidity\\_icd10\\_archive.jsp](https://www.hcup-us.ahrq.gov/toolssoftware/comorbidityicd10/comorbidity_icd10_archive.jsp)
- 25 30. Healthcare Cost and Utilization Project (HCUP). Clinical Classifications Software

- 1            Refined (CCSR). Agency Healthc. Res. Qual. Rockville, MD. 2020;
- 2    31.    Cutting S, Wettengel M, Connors JJ, Ouyang B, Busl K. Three-Month Outcomes Are  
3            Poor in Stroke Patients with Cancer Despite Acute Stroke Treatment. *J. Stroke*  
4            *Cerebrovasc. Dis.* 2017;26:809–815.
- 5    32.    Yoo J, Nam HS, Kim YD, Lee HS, Heo JH. Short-Term Outcome of Ischemic Stroke  
6            Patients With Systemic Malignancy. *Stroke.* 2019;50:507–511.
- 7    33.    Navi BB, Singer S, Merkler AE, Cheng NT, Stone JB, Kamel H, Iadecola C, Elkind  
8            MS V, DeAngelis LM. Cryptogenic subtype predicts reduced survival among cancer  
9            patients with ischemic stroke. *Stroke.* 2014;45:2292–2297.
- 10   34.    Navi BB, Singer S, Merkler AE, Cheng NT, Stone JB, Kamel H, Iadecola C, Elkind  
11           MS V, DeAngelis LM. Recurrent thromboembolic events after ischemic stroke in  
12           patients with cancer. *Neurology.* 2014;83:26–33.
- 13   35.    Murthy SB, Biffi A, Falcone GJ, Sansing LH, Torres Lopez V, Navi BB, Roh DJ,  
14           Mandava P, Hanley DF, Ziai WC, et al. Antiplatelet Therapy After Spontaneous  
15           Intracerebral Hemorrhage and Functional Outcomes. *Stroke.* 2019;50:3057–3063.
- 16   36.    Sobolewski P, Broła W, Szczuchniak W, Fudala M, Sobota A. Safety of intravenous  
17           thrombolysis for acute ischaemic stroke including concomitant neoplastic disease  
18           sufferers - experience from Poland. *Int. J. Clin. Pract.* 2015;69:666–673.
- 19   37.    Masrur S, Abdullah AR, Smith EE, Hidalgo R, El-Ghandour A, Rordorf G, Schwamm  
20           LH. Risk of thrombolytic therapy for acute ischemic stroke in patients with current  
21           malignancy. *J. Stroke Cerebrovasc. Dis.* 2011;20:124–130.
- 22   38.    Huang S, Lu X, Tang L V, Hu Y. Efficacy and safety of intravenous thrombolysis for  
23           acute ischemic stroke in cancer patients: a systemic review and meta-analysis. *Am. J.*  
24           *Transl. Res.* 2020;12:4795–4806.
- 25   39.    Arboix A, Alió J. Cardioembolic stroke: clinical features, specific cardiac disorders

- 1           and prognosis. *Curr. Cardiol. Rev.* 2010;6:150–161.
- 2    40.   Pana TA, McLernon DJ, Mamas MA, Bettencourt-Silva JH, Metcalf AK, Potter JF,
- 3           Myint PK. Individual and Combined Impact of Heart Failure and Atrial Fibrillation on
- 4           Ischemic Stroke Outcomes. *Stroke.* 2019;50:1838–1845.
- 5
- 6



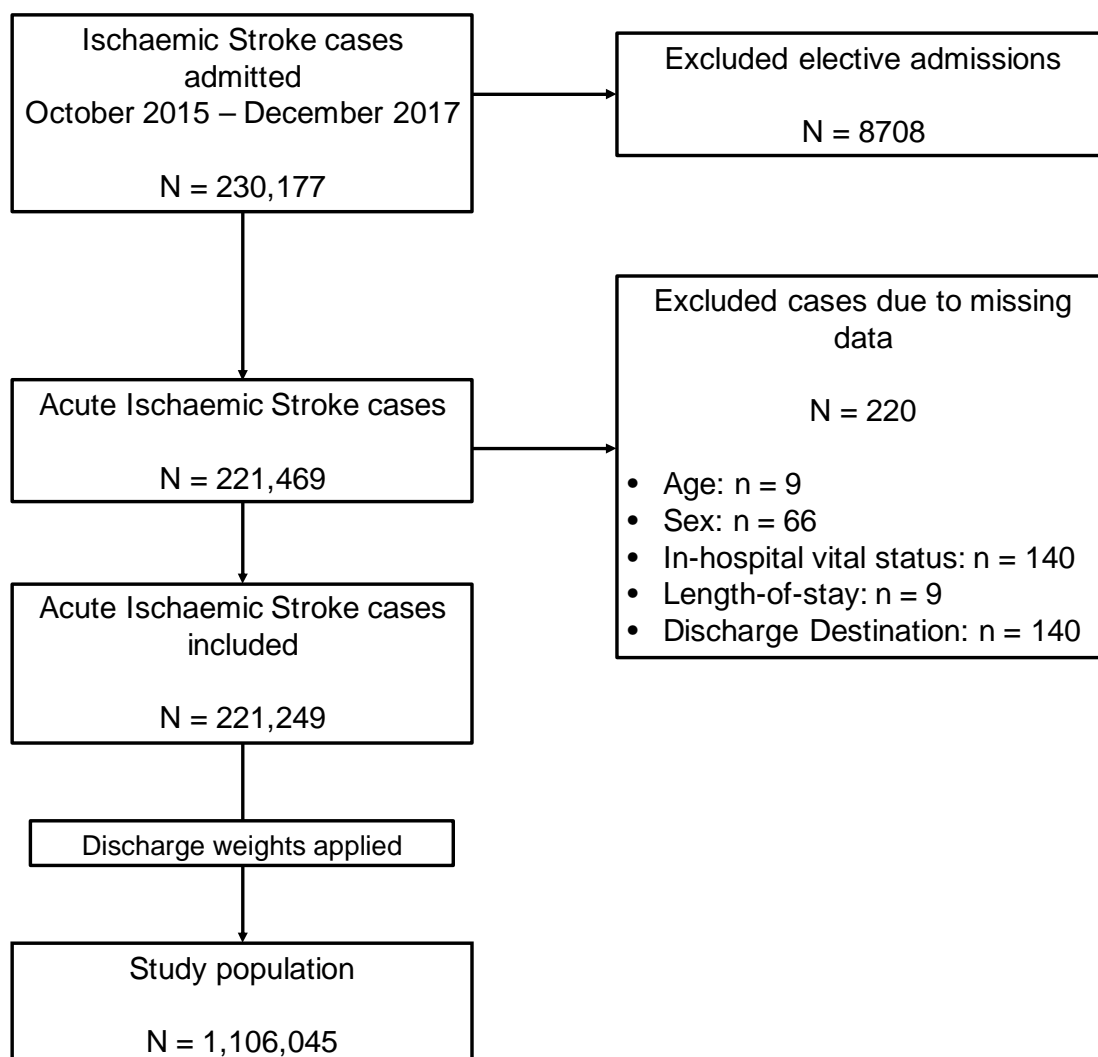
## TABLES

**Table 1.** Patient characteristics on admission, stratified by either co-existent non-metastatic or metastatic cancer. Further descriptive statistics are detailed in Supplemental Table III (please see <https://www.ahajournals.org/journal/str>).

	All	No Active Cancer	Non-metastatic Cancer	Metastatic Cancer	P value
N	1,106,045	1,067,190	20,895	17,960	
Age, median (IQR)	72.00 (61.00-82.00)	71.00 (60.00-82.00)	75.00 (67.00-83.00)	70.00 (62.00-78.00)	<0.001
Length-of-stay, median (IQR)	3.00 (2.00-6.00)	3.00 (2.00-6.00)	4.00 (2.00-7.00)	4.00 (2.00-7.00)	<0.001
Sex					
Female, N (%)	557595 (50.41)	538635 (50.47)	9795 (46.88)	9165 (51.03)	<0.001
<b>Ethnicity</b>					<0.001
White	735330 (66.48)	707550 (66.30)	15005 (71.81)	12775 (71.13)	
Black	183090 (16.55)	177790 (16.66)	2880 (13.78)	2420 (13.47)	
Hispanic	84950 (7.68)	82700 (7.75)	1240 (5.93)	1010 (5.62)	
Asian or Pacific Islander	31635 (2.86)	30500 (2.86)	530 (2.54)	605 (3.37)	
Native American	4700 (0.42)	4570 (0.43)	60 (0.29)	70 (0.39)	
Other	27460 (2.48)	26535 (2.49)	410 (1.96)	515 (2.87)	
<b>ELIXHAUSER CO-MORBIDITIES, N (%)</b>					
Congestive Heart Failure	172170 (15.57)	166950 (15.64)	3225 (15.43)	1995 (11.11)	<0.001
Valvular Disease	110540 (9.99)	106640 (9.99)	2300 (11.01)	1600 (8.91)	0.008
Pulmonary Circulation Disease	8460 (0.76)	6710 (0.63)	555 (2.66)	1195 (6.65)	<0.001
Peripheral Vascular Disease	112065 (10.13)	107955 (10.12)	2470 (11.82)	1640 (9.13)	<0.001
Paralysis	112895 (10.21)	108920 (10.21)	2260 (10.82)	1715 (9.55)	0.178
Other Neurological Disorders	6620 (0.60)	6275 (0.59)	210 (1.01)	135 (0.75)	0.001

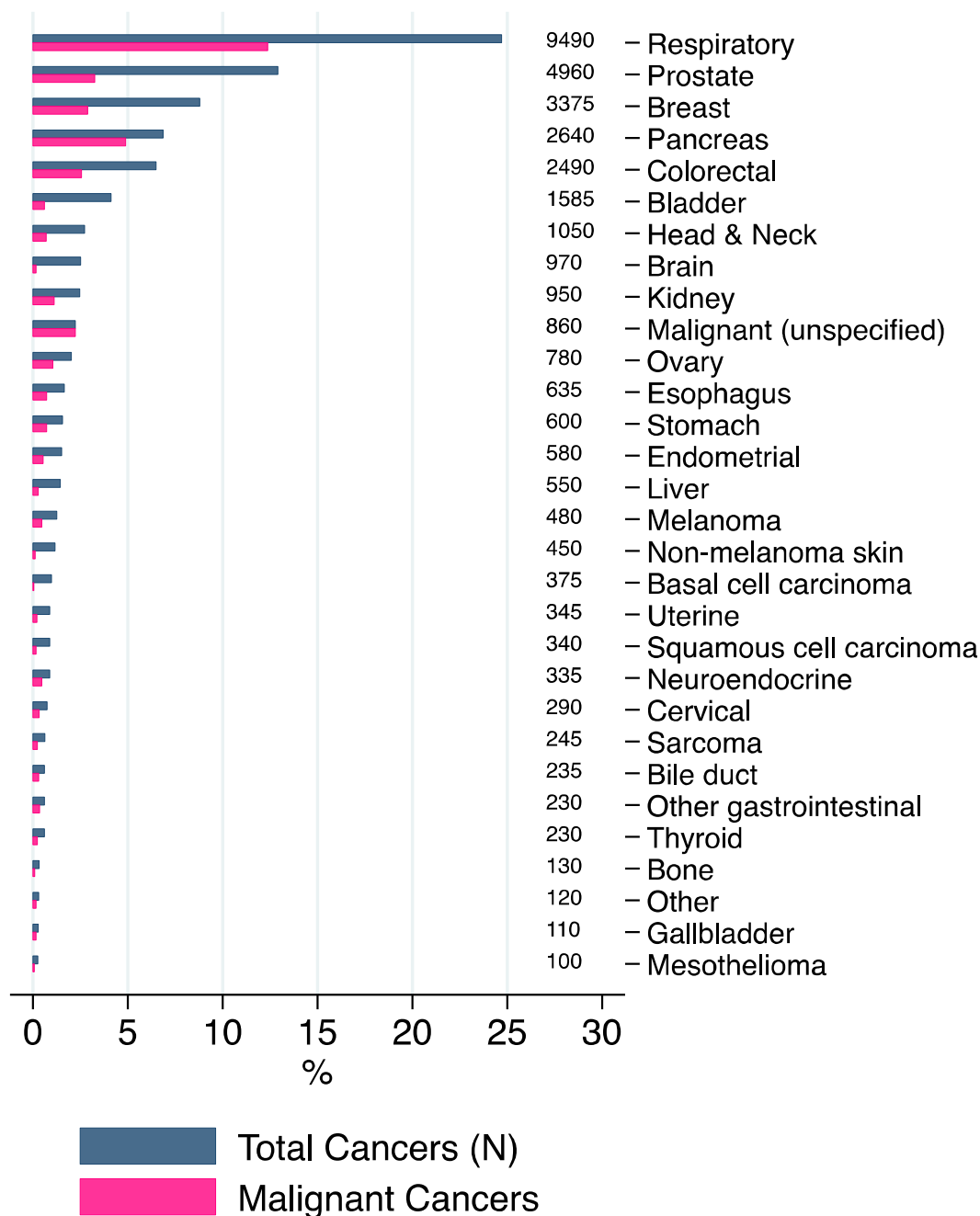
Chronic Pulmonary Disease	174180 (15.75)	165690 (15.53)	4795 (22.95)	3695 (20.57)	< <b>0.001</b>
Diabetes (without chronic complications)	210220 (19.01)	203765 (19.09)	3520 (16.85)	2935 (16.34)	< <b>0.001</b>
Diabetes (with chronic complications)	214400 (19.38)	209135 (19.60)	3095 (14.81)	2170 (12.08)	< <b>0.001</b>
Hypothyroidism	159160 (14.39)	153810 (14.41)	2950 (14.12)	2400 (13.36)	0.193
Renal Failure	181950 (16.45)	175960 (16.49)	3670 (17.56)	2320 (12.92)	< <b>0.001</b>
Liver Disease	18310 (1.66)	17275 (1.62)	550 (2.63)	485 (2.70)	< <b>0.001</b>
Peptic Ulcer Disease	7695 (0.70)	7400 (0.69)	175 (0.84)	120 (0.67)	0.527
Acquired Immune Deficiency Syndrome	2395 (0.22)	2280 (0.21)	100 (0.48)	15 (0.08)	< <b>0.001</b>
Lymphoma	5315 (0.48)	4915 (0.46)	220 (1.05)	180 (1.00)	< <b>0.001</b>
Rheumatoid Arthritis / Collagen Vascular Disease	30150 (2.73)	29240 (2.74)	520 (2.49)	390 (2.17)	0.075
Coagulopathy	41405 (3.74)	37105 (3.48)	1560 (7.47)	2740 (15.26)	< <b>0.001</b>
Obesity	145465 (13.15)	142575 (13.36)	1775 (8.49)	1115 (6.21)	< <b>0.001</b>
Weight loss	44030 (3.98)	39685 (3.72)	1795 (8.59)	2550 (14.20)	< <b>0.001</b>
Fluid and electrolyte disorders	246680 (22.30)	235750 (22.09)	5200 (24.89)	5730 (31.90)	< <b>0.001</b>
Anaemia (chronic blood loss)	4025 (0.36)	3590 (0.34)	240 (1.15)	195 (1.09)	< <b>0.001</b>
Anaemia (deficiency)	133005 (12.03)	123720 (11.59)	4375 (20.94)	4910 (27.34)	< <b>0.001</b>
Alcohol abuse	49375 (4.46)	48080 (4.51)	800 (3.83)	495 (2.76)	< <b>0.001</b>
Drug abuse	28985 (2.62)	28365 (2.66)	355 (1.70)	265 (1.48)	< <b>0.001</b>
Psychoses	26255 (2.37)	25490 (2.39)	440 (2.11)	325 (1.81)	<b>0.041</b>
Depression	124635 (11.27)	120280 (11.27)	2330 (11.15)	2025 (11.28)	0.971
Hypertension	946140 (85.54)	916430 (85.87)	16975 (81.24)	12735 (70.91)	< <b>0.001</b>
<b>PROCEDURES, N (%)</b>					

Thrombectomy	34420 (3.11)	33090 (3.10)	670 (3.21)	660 (3.67)	0.139
Thrombolysis	103600 (9.37)	101035 (9.47)	1730 (8.28)	835 (4.65)	< <b>0.001</b>
<b>OUTCOMES, N (%)</b>					
In-hospital mortality	43545 (3.94)	40545 (3.80)	1230 (5.89)	1770 (9.86)	< <b>0.001</b>
Length-of-stay >4 days	380605 (34.41)	363430 (34.05)	8680 (41.54)	8495 (47.30)	< <b>0.001</b>
Routine Discharge	394105 (35.99)	384490 (36.39)	5600 (26.94)	4015 (22.52)	< <b>0.001</b>

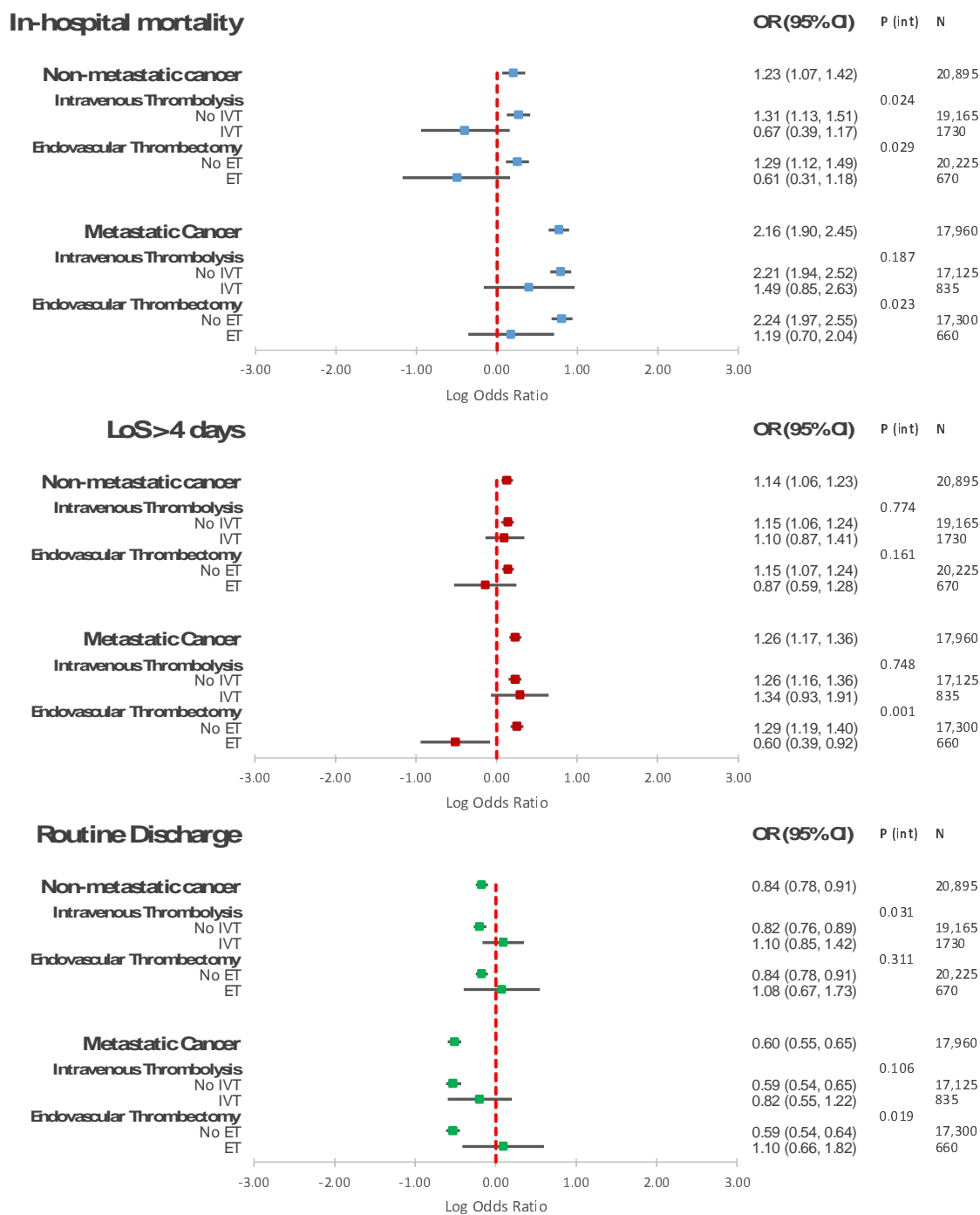


**FIGURES**

**Figure 1.** Patient Population Flowchart.



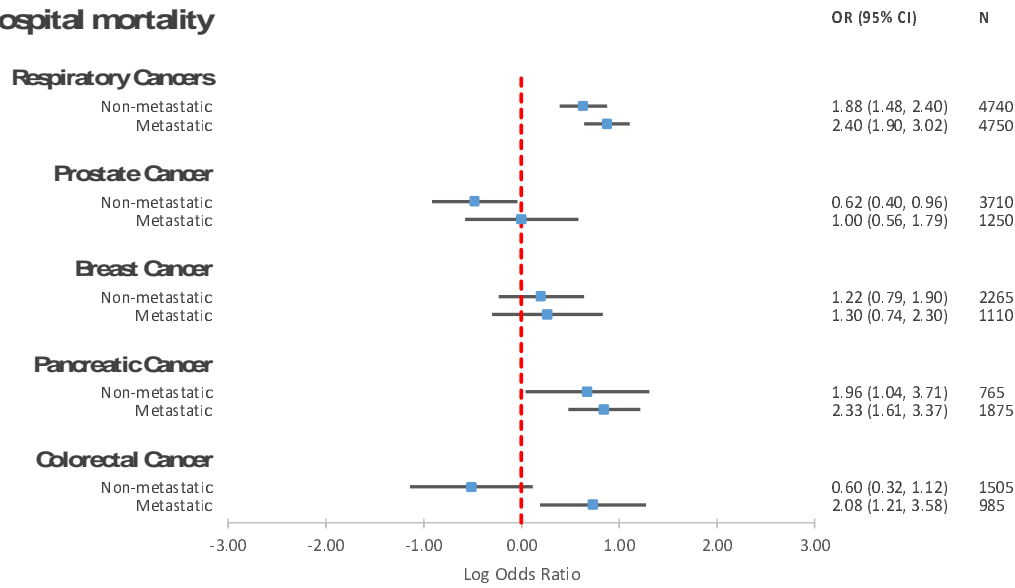
**Figure 2.** Distribution of each primary cancer type amongst the included sample of acute ischaemic stroke patients, representative of 1,106,045 patients.



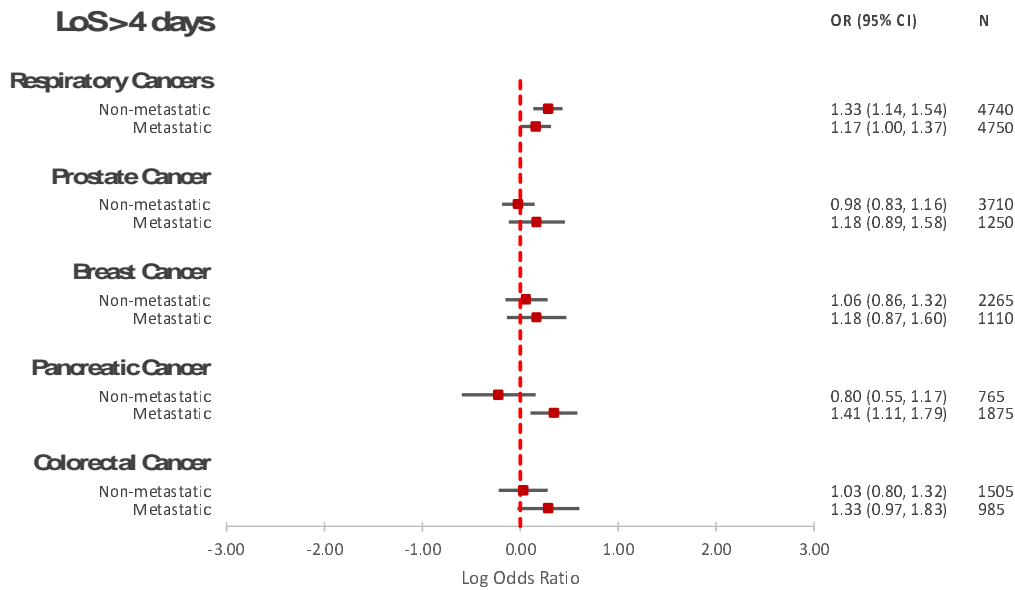
**Figure 3.** Results of multivariable logistic regressions assessing the association between co-morbid cancer (non-metastatic and metastatic) and acute ischaemic stroke in-hospital outcomes as well as the interaction with revascularisation therapies.

OR – odds ratio; CI – confidence interval; IVT – intravenous thrombolysis; ET – endovascular thrombectomy

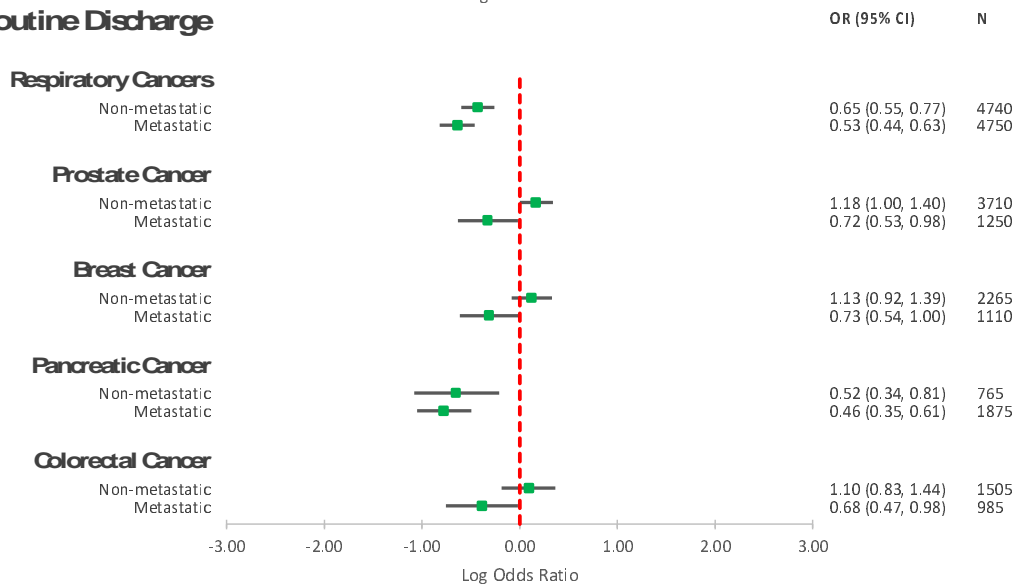
### In-hospital mortality



### LoS>4 days



### Routine Discharge



**Figure 4.** Results of multivariable logistic regressions assessing the association between the 5 most commonly occurring cancer types in the included cohort and acute ischaemic stroke in-hospital mortality as well as the interaction with revascularisation therapies.

OR – odds ratio; CI – confidence interval; IVT – intravenous thrombolysis; ET – endovascular thrombectomy