

1 **RAPID SCREENING FOR SARS-CoV-2 VARIANTS OF CONCERN IN CLINICAL AND**  
2 **ENVIRONMENTAL SAMPLES USING NESTED RT-PCR ASSAYS TARGETING KEY**  
3 **MUTATIONS OF THE SPIKE PROTEIN**

4

5

6

7 La Rosa G.<sup>1\*</sup>, Mancini P.<sup>1</sup>, Bonanno Ferraro G.<sup>1</sup>, Veneri C.<sup>1</sup>, Iaconelli M.<sup>1</sup>, Lucentini L.<sup>1</sup>, Bonadonna  
8 L.<sup>1</sup>, Brusaferrò S.<sup>2</sup>, Brandtner D.<sup>3</sup>, Fasanella A.<sup>4</sup>, Pace L.<sup>4</sup>, Parisi A.<sup>4</sup>, Galante D.<sup>4</sup>, Suffredini E.<sup>5</sup>

9

10 <sup>1</sup> Department of Environment and Health, Italian National Institute of Health, Rome, Italy.

11 <sup>2</sup> Office of the President, Istituto Superiore di Sanità, Rome, Italy

12 <sup>3</sup> Independent Researcher, Rome, Italy.

13 <sup>4</sup> Experimental Zooprophyllactic Institute of the Apulia and Basilicata Regions, Foggia, Italy.

14 <sup>5</sup> Department of Food Safety, Nutrition and Veterinary Public Health, Italian National Institute of  
15 Health, Rome, Italy.

16

17

**\*Corresponding author:**

Giuseppina La Rosa

Department of Environment and Health

Italian National Institute of Health, Rome, Italy

Phone: +390649902718

Email: giuseppina.larosa@iss.it

## 18 SUMMARY

19

20 New SARS-CoV-2 mutations are constantly emerging, raising concerns of increased  
21 transmissibility, virulence or escape from host immune response.

22 We describe a nested RT-PCR assay (~1500 bps) to detect multiple key spike protein mutations  
23 distinctive of the major known circulating SARS-CoV-2 variants, including the three Variants of  
24 Concern (VOCs) 20I/501Y.V1 (United Kingdom), 20H/501Y.V2 (South Africa), and 20J/501Y.V3  
25 (Brazil), as well as the 20E.EU1 variant (Spain), the CAL.20C recently identified in California, and  
26 the mink-associated variant (GR, lineage B.1.1.298). Prior to application to field samples, the  
27 discriminatory potential of this PCR assay was explored using GISAID and Nextclade. To extend  
28 variant detection to challenging matrices such as sewage, where the amplification of long fragments  
29 is problematic, two short nested RT-PCR assays (~300 bps) were also designed, targeting portions  
30 of the region spanned by the long nested assay.

31 The three newly-designed assays were then tested on field samples, including 7 fully-sequenced  
32 viral isolates from swab samples and 34 urban wastewater samples, some of which collected in  
33 areas where circulation of VOCs had been reported.

34 The long assay successfully amplified all the previously characterized viral isolates, allowing the  
35 correct identification of variants 20I/501Y.V1 and 20E.EU1 present in the panel. The sequences  
36 obtained using the short assays were consistent with those obtained with the long assay. Mutations  
37 characteristic of VOCs (UK and Brazilian variant) and of other variant (Spanish) were detected in  
38 sewage samples. To our knowledge, this is the first evidence of the presence of sequences harboring  
39 key mutations of 20I/501Y.V1 and 20J/501Y.V3 in urban wastewaters, highlighting the potential  
40 contribution of wastewater surveillance to explore SARS-CoV-2 diversity.

41 The developed nested RT-PCR assays can be used as an initial rapid screening test to select clinical  
42 samples containing mutations of interest. This can speed up diagnosis and optimize resources since

43 it allows full genome sequencing to be done only on clinically relevant specimens. The assays can  
44 be also employed for a rapid and cost-effective detection of VOCs or other variants in sewage for  
45 the purposes of wastewater-based epidemiology. The approach proposed here can be used to better  
46 understand SARS-CoV-2 variant diversity, geographic distribution and impact worldwide.

47

48

49 **Keywords:** SARS-CoV-2, variant, mutation, VOC, PCR, sequencing

50

51

52

## 53 **INTRODUCTION**

54

55 On 31 December 2019, the Wuhan Municipal Health and Health Commission reported a cluster of  
56 pneumonia cases of unknown aetiology. Further investigations identified a novel coronavirus as the  
57 causative agent of the disease (China CDC, 2020). On 11 March 2020, following the spread of the  
58 outbreak to other parts of China and to a number of countries worldwide, the Director General of  
59 the WHO declared the COVID-19 outbreak a pandemic (WHO, 2020a). As of 23 February 2021,  
60 111 million cases have been documented in 192 countries, with 2.4 million confirmed deaths  
61 (<https://coronavirus.jhu.edu/map.html>).

62 A growing number of SARS-CoV-2 variant sequences are being detected since the beginning of the  
63 pandemic, some of which considered of global concern. All of these variants have characteristic  
64 mutations, the most significant of which are located in the gene encoding the spike (S) protein,  
65 potentially affecting viral infectivity and antigenicity (Li et al., 2020; Pillay et al., 2020).

66 One mutation in the spike protein (D614G), in particular, emerged early in the epidemic and spread  
67 rapidly through Europe and North America (Korber et al., 2020; Volz et al., 2020).

68 In August/September 2020, a SARS-CoV-2 variant linked to infection among farmed minks,  
69 subsequently transmitted to humans, was identified in Denmark (Hammer et al., 2020). In all, six  
70 countries (Denmark, the Netherlands, Spain, Sweden, Italy and the United States) reported cases of  
71 farmed mink infected with SARS-CoV-2 to the World Organisation for Animal Health (OIE)  
72 (WHO, 2020b).

73 An additional novel variant - clade GV, lineage B.1.177 (GISAID) or 20E.EU1 (Nexstrain) -  
74 emerged in early summer of 2020 in Spain, and subsequently spread to multiple locations in  
75 Europe, possibly introduced into other countries by summer tourists (Hodcroft et al., 2020). The  
76 introduction of the B.1.177 lineage into Ontario, Canada, by a traveller returning from Europe in  
77 late September 2020 was also reported in a recent preprint (Guthrie et al., 2020).

78 On 14 December 2020, British authorities announced that a new SARS-CoV-2 variant had been  
79 identified through viral genomic sequencing (WHO, 2020c). The variant was initially termed  
80 SARS-CoV-2 VUI 202012/01 (Variant Under Investigation, year 2020, month 12, variant 01) and  
81 then re-designated VOC (Variant Of Concern) 202012/01 on 18 December 2020 (Chand et al.,  
82 2021). The new variant belongs to clade GR, lineage B.1.1.7 (GISAID), or clade 20I/501Y.V1  
83 (Nextstrain) and was discovered following an unforeseen rise in COVID-19 cases in South East  
84 England, with a more than three-fold increase in the period from 5 October to 13 December 2020  
85 (WHO, 2020d). As of 19 January 2021, 23 EU/EEA countries, including Italy, have reported the  
86 new COVID-19 variant 20I/501Y.V1. In the rest of the world, 37 additional countries reported it  
87 (ECDC, 2021b). The emergence of the new SARS-CoV-2 variant, which could be 40-70% more  
88 transmissible than previous strains circulating in the UK (WHO 2020b; ECDC, 2020), has  
89 prompted some countries to close their borders with the UK. A review by the UK's New and  
90 Emerging Respiratory Virus Threats Advisory Group (NERVTAG) advises that there is moderate  
91 confidence that 20I/501Y.V1 has a substantial increase in transmissibility compared to other  
92 variants (NERVTAG, 2020; Mahase 2020). However, there is not enough information at present to

93 determine whether this variant is associated with any change in clinical disease severity or increased  
94 mortality, though preliminary analyses in the United Kingdom, showed a risk ratio of death of 1.65  
95 for B.1.1.7 cases compared to non-B.1.1.7 cases (PHE, 2021). As for antigenic response, to date, it  
96 is considered unlikely that 20I/501Y.V1 may hinder vaccine-induced immunity (Conti et al., 2021).  
97 On 18 December 2020, national authorities in South Africa announced the detection of a new  
98 variant of SARS-CoV-2, designated VOC-202012/02 (the second Variant Of Concern, December  
99 2020). This variant, belonging to clade GH, lineage B.1.351 (GISAID) or 20H/501Y.V2  
100 (Nextstrain), was reported to be largely replacing other coronavirus strains in South Africa since at  
101 least November 2020. As of 19 January 2021, 10 EU/EEA countries (Germany, France, Ireland,  
102 Austria, Belgium, Finland, the Netherlands, Norway and Sweden) and 13 countries/territories  
103 outside of the EU/EEA have documented the presence of this new SARS-CoV-2 variant (ECDC,  
104 2021b). One case of the South African variant was detected in Italy, in a man who landed at  
105 Milan's Malpensa Airport from Africa at the end of January  
106 ([https://www.ansa.it/lombardia/notizie/2021/02/03/a-varese-primocaso-variante-sudafricana-in-](https://www.ansa.it/lombardia/notizie/2021/02/03/a-varese-primocaso-variante-sudafricana-in-italia_41b99448-367c-4000-ac88-9b3ae130d839.html)  
107 [italia\\_41b99448-367c-4000-ac88-9b3ae130d839.html](https://www.ansa.it/lombardia/notizie/2021/02/03/a-varese-primocaso-variante-sudafricana-in-italia_41b99448-367c-4000-ac88-9b3ae130d839.html)). Preliminary results indicate that it may have  
108 increased transmissibility. Here too, as with the VOC 202012/01 variant, there is no evidence that it  
109 is associated with a higher severity of infection (ECDC, 2021b).  
110 In January, another variant, clade GR lineage P.1 (GISAID) or 20J/501Y.V3 (Nextstrain) was  
111 identified in Japan in four travellers who had arrived from Brazil (NIID, 2021; Galloway et al.,  
112 2021). Whole genome sequences for all four isolates were deposited in GISAID EpiCoV on 10  
113 January 2021. On 13 January 2021, researchers from Fiocruz Amazônia announced the  
114 identification of this variant in the capital of Amazonas, Manaus, where an upsurge in COVID-19  
115 cases was registered in January of 2021 (Farias et al., 2021). To date, the P.1 variant has been  
116 identified either in Brazil, or in travellers from Brazil (mostly from the State of Amazonas),  
117 including one returning to Italy from Brazil (Maggi et al., 2021).

118 Lastly, on 17 January 2021, public health officials announced that the SARS-CoV-2 GH, lineage  
119 B.1.429 (GISAID) – also termed CAL.20C – has become increasingly common in multiple  
120 Californian counties and has been responsible for several large COVID-19 outbreaks in that state.  
121 All of these variants have characteristic mutations, the most significant of which are located in the  
122 gene encoding the spike (S) protein (Li et al., 2020; Pillay et al., 2020).  
123 The so-called ‘UK variant’ 20I/501Y.V1 is characterized by 23 mutations: 14 nonsynonymous  
124 mutations, 3 deletions and 6 synonymous mutations affecting ORF1ab, S, ORF8, and N (Chand et  
125 al, 2021). Mutations in the gene that encodes for the S protein, which is associated with viral entry  
126 into cells, has attracted the most attention. Ten mutations are documented in the S protein of the UK  
127 variant. Two of these, the N501Y (an asparagine to tyrosine amino acid substitution in the receptor  
128 binding domain) and the HV69-70del (a 6-base deletion), had already been circulating globally  
129 before merging into this new variant. The most relevant changes in the 20I/501Y.V1 variant are  
130 likely to be the N501Y mutation and the Y144del - a deletion potentially contributing to spike  
131 surface variation. The N501Y mutation is in the receptor binding domain (RDB), important to  
132 ACE2 binding and antibody recognition. It is likely to enhance the transmissibility of the virus by  
133 improving the S protein's affinity for the host's ACE2 receptor. *In vitro* (Starr et al., 2020) and  
134 animal experiments (Gu et al., 2020) seem to confirm this hypothesis.  
135 The 20H/501Y.V2 variant, first detected in South Africa, displays the same N501Y mutation (as  
136 well as the D614G) as the UK variant, but this mutation is thought to have arisen independently in  
137 the two lineages (WHO 2020b). It also carries additional mutations (the most common are L18F,  
138 K417N, E484K and K417N) in the S protein, which are not usually present in the UK strain, though  
139 mutation E484K has been recently detected in 21 B.1.1.7 sequences in UK (PHE, 2021).  
140 Furthermore, 501Y.V2 does not have the HV69-70del characterizing the UK variant, but presents in  
141 about 85% of sequences another deletion in the S region, that of amino acids 242 to 244 (LAL242-  
142 244del).

143 The new variant from Brazil, 20J/501Y.V3, harbors 12 mutations in the S protein, some of which it  
144 shares with either the ‘UK variant’ (N501Y and D614G) or the ‘South African variant’ (L18F,  
145 E484K, N501Y, D614G).

146 The Spanish variant 20E.EU1 is characterized by substitution A222V in the A domain of the S  
147 protein, a domain which is not considered to contribute directly to receptor binding or membrane  
148 fusion for SARS-CoV-2 (Hodcroft et al., 2020).

149 The rapid emergence of variants worldwide highlights the importance of genetic surveillance of the  
150 SARS-CoV-2 pandemic. The risk of introduction and community spread of variants of concern in  
151 the EU/EEA countries is considered very high (ECDC, 2021b). WHO advises all countries to  
152 increase the routine sequencing of SARS-CoV-2 viruses where possible, and to share sequence data  
153 internationally through open-source platforms (WHO 2021). ECDC also recommends urgent  
154 analysis and sequencing of virus isolates to identify cases of the new variants in a timely manner  
155 (ECDC, 2021a). Currently, whole genome sequencing (WGS) of human isolates has resulted in  
156 over 591,000 complete genomes available in GISAID as of 23 February, 2021.

157 A full genome approach (WGS), however, is time-consuming and costly, and requires specialized  
158 computational infrastructure and technical skills. Furthermore, WGS cannot be effectively  
159 performed in conditions of low virus titres, reduced sequence integrity and simultaneous occurrence  
160 of more than one genome.

161 We developed a long PCR nested RT-PCR assay (~1500 bp), followed by conventional Sanger  
162 sequencing, to quickly screen for the different circulating variants or detect the introduction of  
163 possible novel variants. The assay amplifies a key region of the S gene, the region containing the  
164 major mutations of the UK, South African and Brazilian variants, as well as crucial mutations of  
165 other variants of clinical interest, like the 20E.EU1 that emerged in Spain, the mink-associated  
166 variant, and the CAL.20C variant identified in California (see Table 1). Preliminary studies on  
167 sequences available in GISAID and Nextclade were performed before application on field samples.

168 The first, aimed at verifying whether specific mutation combinations are sufficiently informative to  
169 screen for specific SARS-CoV-2 variants, and the second, a comparative study of full-length  
170 sequences and their corresponding ~1500 bp fragments to ascertain whether the different variants  
171 would be correctly assigned to their respective clades on the sole basis of the genome region  
172 amplified by the long nested PCR assay.

173 We subsequently enhanced our method to allow variant detection in highly challenging matrices  
174 such as wastewater, where the amplification of long RNA fragments is difficult, by designing two  
175 additional short nested RT-PCRs targeting portions of the region spanned by the long assay.

176 SARS-CoV-2 is excreted by both symptomatic and asymptomatic individuals that are infected with  
177 the novel coronavirus, and ends up in wastewater systems (Foladori et al., 2020). By analysing  
178 wastewater, it is therefore possible to obtain information on viruses circulating in the population  
179 served by a given Wastewater Treatment Plant (WTP). Previous studies have detected SARS-CoV-  
180 2 RNA in wastewater samples worldwide, highlighting environmental surveillance as a valuable  
181 tool potentially allowing us to detect peaks in virus circulation and estimate the proportion of  
182 individuals infected with SARS-CoV-2 in a given catchment area (Hart et al., 2020), thus  
183 contributing to inform public health interventions.

184 All the assays were successfully tested on a 20I/501Y.V1 strain detected in Italy at the end of  
185 December 2020 (see Supplementary material), and on a Wuhan strain (clade 19A). Finally, the  
186 three assays were tested on a panel of field samples of clinical (viral isolates from swabs) and  
187 environmental (sewage) origin.

188 The methods proposed could be used to perform targeted sequencing of clinical and environmental  
189 samples for screening and early detection of SARS-CoV-2 variants.

190

191

192



## 193 MATERIALS AND METHODS

194

### 195 *Primer design and preliminary in silico studies*

196 Primers were designed to capture key mutations of different variants. Such mutations (Table 1),  
197 potentially affecting viral infectivity and antigenicity, are located in the gene encoding the spike (S)  
198 protein. Primers (Table 2 and Figure 1) were designed using the Primer 3 software  
199 (<http://www.bioinformatics.nl/cgi-bin/primer3plus/primer3plus.cgi>).

200 Ultimately, three assays were designed with different aims:

201 a) A long nested RT-PCR (first cycle - PCR ID 979; nested assay - PCR ID 980, 1583-1592 bps)  
202 designed to screen for the presence of mutations characteristic of the three VOCs (20I/501Y.V1,  
203 20H/501Y.V2, and 20J/501Y.V3), as well as other variants of interest such as 20E.EU1,CAL 20C,  
204 and mink variant, as shown in Table 1.

205 b) A short nested RT-PCR (319-327 bps) amplifying a portion of the region targeted by the long  
206 assay (first cycle - PCR ID 972; nested assay - PCR ID 973) designed to reveal the presence of the  
207 mutations HV69-70del and Y144del (UK variant), D80A (South African variant), and D138Y  
208 (Brazilian variant).

209 c) Another short nested RT-PCR (323 bps) amplifying a different portion of the region targeted by  
210 the long assay (first cycle - PCR ID 974; hemi-nested assay - PCR ID 975) designed to reveal the  
211 presence of the key mutation N501Y shared by different variants of concern. This amplicon can  
212 also reveal the presence of amino acid substitution A570D (combined with N501Y) of the  
213 20I/501Y.V1 variant, and E484K (combined with the N501Y) of either the 20H/501Y.V2 or the  
214 20J/501Y.V3 variant. It can also detect L452R of the Californian variant and Y453F of the mink  
215 variant.

216 Before application to field samples, a preliminary in silico study was performed to examine the  
217 discriminatory potential of the specific mutations covered by our long assay, for SARS-CoV-2

218 variant identification. This was done using GISAID (<https://www.gisaid.org/>) and Nextclade  
219 (<https://nextstrain.org/>). The GISAID study was performed on 20I/501Y.V1 (14 January 2021) and  
220 on 20H/501Y.V2 (17 January 2021) using complete genomes (see Supplementary Materials).  
221 Overall, considering the characteristic mutations of 20I/501Y.V1 present in the ~ 1500 bp fragment  
222 of the S gene chosen for the long assay (HV69-70del, Y144del, N501Y and A570D), the results  
223 showed that among the complete genomes belonging to lineage GR B.1.1.7 any combination of two  
224 mutations was present at a frequency ranging from 97.6% to 99.4%. Furthermore, cluster analysis  
225 attributed all of the sequences displaying at least two of the aforementioned mutations to the GR  
226 B.1.1.7 lineage. As for the 20H/501Y.V2 variant, characteristic mutations such as D80A, E484K,  
227 N501Y, LAL242-244del were present at a frequency ranging from 88.6 to 91.4%. Any combination  
228 of two of these mutations was present in clade GH lineage B.1.351 at a frequency exceeding 84.2%,  
229 and sequences displaying at least two of the mutations belonged to lineage B.1.351 in >99% of  
230 cases. One significant exception was the E484K/N501Y combination, which belonged to lineage  
231 GH B.1.351 in 96.8% of cases, due to its presence in the 20J/501Y.V3 (Brazilian) variant as well.  
232 Based on this preliminary analysis, it was concluded that, for these two variants, the detection of a  
233 combination of at least two mutations in the selected ~ 1500 bp fragment provided a strong  
234 indication of the presence of the variant in question.

235 To further explore the discriminatory potential of our newly-designed long nested PCR for the  
236 different SARS-CoV-2 variants, we compared the ~1500 bp fragments to their corresponding full-  
237 length sequences in terms of how they would be classified by Nextclade web tool. We therefore  
238 created two FASTA files: one containing 30 full-length genomes, comprising five GISAID strains  
239 for each of the following clades/variants: 19A (Wuhan, China), 20I/501Y.V1 (UK), 20H/501Y.V2  
240 (South Africa), 20J/501Y.V3 (Brazil), 20E.EU1 (Spain), CAL.20C (California) as described in the  
241 Supplementary Materials; and the other, derived from the first, containing the corresponding ~1500  
242 bp fragments amplified by our long nested PCR assay. Both files were then analyzed using the

243 Nextclade web tool ([nextstrain.org](https://nextstrain.org)) in order to determine whether our nested assay (PCR ID 980)  
244 would yield similar results to those given by a full sequence analysis. Nextclade web tool assigned  
245 all the variants correctly on the sole basis of the genome region amplified by the PCR ID 980. The  
246 only significant exception was the 20I/501Y.V1 variant, which was incorrectly assigned to clade  
247 20B. This misclassification, however, was due to a limitation of the Nextclade web tool, which, for  
248 the purposes of phylogenetic placement and clade assignment, uses only mutations and no gaps  
249 (<https://github.com/nextstrain/nextclade/issues/311#issuecomment-765904855>), and was therefore  
250 unable to take into consideration the deletions HV69-70del and Y144del for a correct assignment of  
251 our partial sequences of the S gene. Similarly, the two trees built with Nextclade, one based on full-  
252 length genomes and the other based on ~1500 bp fragments, both correctly assigned all of the  
253 variants to the branches corresponding to clades 19A, 20H/501Y.V2, 20J/501Y.V3 and 20E.EU1.  
254 Only the ‘UK variant’ was placed at the base of the 20I/501Y.V1 branch (Figure 2).

255

#### 256 *Primer validation on field samples and assay specificity*

257 The RNA of the 20I/501Y.V1 variant was obtained from a nasopharyngeal swab of an Apulian  
258 patient who had returned from the United Kingdom. The sample had previously been isolated on  
259 Vero E6 cells, fully sequenced (Experimental Zooprophyllactic Institute of Puglia and Basilicata),  
260 and the sequence submitted to GISAID under reference hCoV-19/Italy/APU-IZSPB-399PT/2020.  
261 RNA from the Wuhan strain (kindly provided by the Robert Koch-Institute under the RefBio  
262 project) was included as control.

263 Before being tested with the three nested PCR assays, both RNAs were standardized at a  
264 concentration ranging between  $10^2$  and  $10^3$  genome copies (g.c.)/ $\mu$ L using a previously published  
265 real-time RT-qPCR (La Rosa et al., 2021).

266 The European Virus Archive global (EVAg) Coronavirus RNA specificity panel (kindly provided  
267 by the Erasmus University Medical Center, Rotterdam, The Netherlands), which includes both

268 Alfa- and Beta-coronaviruses (HCoV-NL63, HCoV-229E, HCoV-OC43, MERS-CoV, SARS-CoV  
269 and SARS-CoV-2), was used to assess the specificity of our newly-designed primers.

270

271 *Field samples*

272 i) Clinical samples: Seven SARS-CoV-2 RNA samples had previously been extracted from viruses  
273 originating from nasopharyngeal swabs following isolation on Vero E6 cells, and had been  
274 characterized by WGS and deposited in GISAID as belonging to clades 20A, 20B, 20E.EU1 (two  
275 samples each), and 20I/501Y.V1 (one sample). Viral concentrations in these samples were  
276 calculated as previously described (La Rosa et al., 2021) and found to be in excess of  $10^6$  g.c./ $\mu$ L.  
277 The samples were subsequently diluted to an approximate concentration of  $10^4$  g.c./ $\mu$ L before  
278 testing by nested PCR.

279 ii) Environmental samples: a total of 34 sewage samples were included in the study. Twenty  
280 samples, collected in Wastewater Treatment Plants (WTPs) in Rome, Italy, between September and  
281 December 2020 (see Supplementary Materials), had been previously analyzed and found positive  
282 for SARS-CoV-2 following the procedure described in La Rosa et al. (2021). Briefly, concentration  
283 of sewage samples (250 ml) was performed by the two-phase polyethylene glycol-dextran  
284 separation method (WHO 2003) and nucleic acids were extracted using the NucliSens extraction  
285 system (bioMerieux, Marcy-l'Etoile, France). The eluted RNA (100  $\mu$ l) was aliquoted and stored at  
286  $-80^\circ\text{C}$  until molecular analysis. Viral concentrations in these samples ranged from 2.0 to 37.8  
287 g.c./ $\mu$ L of RNA (corresponding to  $1.6 \times 10^3$  to  $3.0 \times 10^4$  g.c./L of raw sewage).

288 Eight sewage samples (4 composite and 4 grab) were collected between 21 and 25 January 2021 in  
289 4 WTPs in the small town of Guardiagrele in Abruzzo (central Italy), where a cluster linked to the  
290 UK variant had been reported, to investigate whether the S mutations associated with 20I/501Y.V1  
291 were detectable in the local sewage.

292 Furthermore, six sewage samples were collected between 5 and 8 February 2021 in the city of  
293 Perugia, Umbria (central Italy), where the UK variant had been on the rise and the Brazilian variant  
294 had been identified as well  
295 (<https://www.regione.umbria.it/documents/18/25027633/Ordinanza+n.14+del+6+febbraio+2021.pdf>).

297

#### 298 *Nested RT-PCR conditions*

299 Following standardization of the protocol, SuperScript IV One-Step RT-PCR System with Platinum  
300 SuperFi RT-PCR Master mix (Invitrogen, Carlsbad, CA, USA) was used for the RT-PCR. The  
301 amplification conditions for the RT-PCR were as follows: reverse transcription at 45 °C for 10 min,  
302 denaturation at 98 °C for 2 min, followed by 35 cycles of 98 °C for 10 sec, 58 °C for 10 sec, 72 °C  
303 for either 30 sec (PCR ID 972 and 974) or 1 min (PCR ID 979), and a final extension at 72 °C for 5  
304 min. Each of the three PCR reactions was performed using 1 µL of each primer (10 µM; Table 1)  
305 and either 4 µL of RNA in a final volume of 25 µL (clinical samples) or 8 µL of RNA in a final  
306 volume of 50 µL (environmental samples). After the first round of PCR, nested PCR was performed  
307 using the Phusion Hot Start II DNA Polymerase with GC buffer (Thermo Fisher Scientific,  
308 Waltham, MA, USA), 2 µL of the first PCR product, 1 µL of each primer (10 µM) and the  
309 following conditions: initial denaturation at 98 °C for 30 sec, followed by 45 cycles of 98 °C for 10  
310 sec, 62 °C for 30 sec, 72 °C for either 30 sec (PCR ID 973 and 975) or 1 min (PCR ID 980), and a  
311 final extension at 72 °C for 10 min. Standard precautions were taken to avoid laboratory  
312 contamination. PCR products were observed by gel electrophoresis (2% agarose gel, stained with  
313 GelRed, Biotium; Fremont, CA, USA). To confirm amplifications, all products were purified from  
314 the PCR reaction or from gel using either Montage PCRm96 Micro-well Filter Plate (Millipore,  
315 Burlington, MA, USA) or GRS PCR & Gel Band Purification Kit (GRISP, Porto, Portugal) and

316 were sequenced (see Supplementary Materials) on both strands (Bio-Fab Research, Rome, Italy and  
317 Eurofins Genomics, Ebersberg, Germany).

318 Sequences were submitted to GenBank under the accession numbers [to be assigned; submission  
319 IDs 4852387, 4852507, and 4852527].

320

### 321 *Bioinformatics analysis*

322 The public database GISAID (Shu and McCauley, 2017) was used for BLAST searches and for  
323 mutation analysis. The Nextclade web tool v.012.0 (Hadfield et al., 2018) was used to compare  
324 study sequences to SARS-CoV-2 reference sequences, assign them to clades, and determine their  
325 position within the SARS-CoV-2 phylogenetic tree. As of 21 January 2021, the database includes  
326 11 major clades (19A, 19B, 20A, 20B, 20C, 20D, 20E(EU1), 20F, 20G, 20I/501Y.V1,  
327 20H/501Y.V2, 20J/501Y-V3). Auspice v2.0, an open-source interactive tool, was used to visualize  
328 phylogenetic trees.

329 All SARS-CoV-2 mutations found in field samples were compared with the GISAID reference  
330 strain hCoV-19/Wuhan/WIV04/2019 using the CoVsurver mutation analysis tool  
331 (<https://www.gisaid.org/epiflu-applications/covsurver-mutations-app/>), which provides geographic  
332 and temporal distributions of SARS-CoV-2 mutations.

333

334

335

## 336 **RESULTS**

337

### 338 *Primer validation and assay specificity*

339 All three newly designed PCR assays successfully amplified the two strains (the UK variant and the  
340 Wuhan strain) used for primer assessment.

341 Amplicon sequencing of the long fragment of the UK variant revealed the presence of mutations  
342 HV69-70del, Y144del, N501Y and A570D characteristic of 20I/501Y.V1 (Table 1). Sequencing of  
343 the short amplicons obtained using the other two assays confirmed this result. In the Nextclade tree  
344 constructed using the ~1500 bps sequence, this isolate fell at the base of the branch corresponding  
345 to clade 20I/501Y.V1, as predicted by the preliminary study we conducted with the UK variant in  
346 Nextrain prior to primer design (Figure 2). As for the Wuhan strain, although amplification was  
347 achieved with all three assays, the long PCR yielded a low amount of product, probably due to  
348 RNA fragmentation, allowing only partial sequencing of the fragment. Identity with GenBank  
349 reference sequence NC\_045512 was confirmed for amplicons provided by the two short assays.  
350 Specificity of the three designed assays was confirmed on the EVAg Coronavirus RNA panel.  
351 Amplicons of the expected size were obtained only for SARS-CoV-2 (sequencing confirmed 100%  
352 identity to reference sequence NC\_045512) while no amplification was present for HCoV-NL63,  
353 HCoV-229E, HCoV-OC43, MERS-CoV, and SARS-CoV RNAs.

354

### 355 *Clinical samples*

356 All of the seven SARS-CoV-2 RNAs extracted from viruses cultured on Vero E6 cells and  
357 previously characterized by WGS were successfully amplified by the three newly developed assays.  
358 Sequencing results of amplicons generated by the long PCR are summarized in Table 3. The  
359 geographic and temporal occurrence of the mutations detected in the field samples, obtained using  
360 the GISAID CoVsurver: Mutation Analysis tool, is summarized in Supplementary Materials.  
361 Sequences obtained by the long PCR confirmed the presence of the two variants in swab samples  
362 (20E.EU1 in swab IDs 29 and 30, and 20I/501Y.V1 in swab ID 31). The UK variant, however,  
363 could only be assigned to its correct lineage using the GISAID BLAST tool, given the  
364 aforementioned limitation of the Nextclade tool. Samples free of mutations or carrying mutations  
365 not specific to any VOC in the analyzed region (swab IDs 25 to 28) could not be differentiated and

366 assigned. Indeed, they showed 100% nt identity with different clades/lineages in GISAID, and were  
367 all classified as 19A by Nextclade (Table 3).

368 All clinical samples also tested positive using the two short nested PCR assays. Amplicon  
369 sequencing of the short PCR fragments confirmed the sequences obtained using the long nested  
370 PCR in all samples.

371

### 372 *Environmental samples*

373 A total of 34 wastewater samples were tested with the three nested PCR assays. PCR and  
374 sequencing results are summarized in Table 4. The long nested RT-PCR did not amplify any of the  
375 20 SARS-CoV-2-positive urban sewage samples collected from WTPs in Rome (IDs 3702 to 3815).  
376 Amplification, however, was achieved with PCR IDs 973 and 975 (8 and 10 samples, respectively,  
377 with an overlap of 5 samples). None of these samples displayed mutations indicative of VOCs.

378 With regard to the 14 sewage samples collected from locations experiencing outbreaks of SARS-  
379 CoV-2 variants, the long nested PCR successfully amplified two of the eight samples collected in  
380 Guardiagrele, Abruzzo (IDs 3863 and 3865) and one of the six samples collected in Perugia,  
381 Umbria (ID 3947). The first two samples showed mutations characteristic of the Spanish variant  
382 (A222V), while the sample ID 3947 carried the mutation characteristic of the Brazilian variant  
383 (D138Y, R190S, K417T, E484K, and N501Y). The short assays - PCR ID 973, and PCR ID 975 -  
384 successfully amplified 7 and 6 of the 14 sewage samples, respectively (with an overlap of 6  
385 samples, including the three samples testing positive also by the long assay).

386 Sequencing of fragments obtained by PCR 973 showed no mutations in the PCR amplicons  
387 originating from Guardiagrele. On the contrary, this short assay did find the presence of mutation  
388 D138Y, characteristic of the Brazilian variant, in three of the six samples collected in Perugia: ID  
389 3944, 3945, and 3947. Another sample from Perugia (ID 3949), showed the aa substitution E96G,  
390 while the remaining two amplifications did not display any mutation.



391 The second short assay, PCR 975, confirmed the results obtained by PCR 973 on the amplified  
392 samples from Guardiagrele (IDs 3862 and 3863), namely, the absence of mutations indicative of  
393 VOCs. In the four samples collected in Perugia and identified as carrying mutations, on the other  
394 hand, this short assay (PCR 975) showed the key mutation N501Y. This mutation was combined  
395 with E484K in three of them (IDs 3944, 3945, and 3947), a combination present in both the  
396 Brazilian and the South African variants (see Table 1). The results of PCR 973, where all three  
397 samples showed the aa substitution D138Y, and those of the long assay showing one of them (ID  
398 3847) to carry all 5 aa substitutions typical of the Brazilian variant, pointed to the presence of this  
399 VOC. The fourth sample from Perugia (ID3949) carried mutation N501Y along with A570D, a key  
400 signature of the UK variant.

401

402

403

#### 404 **DISCUSSION**

405

406 SARS-CoV-2 sequence diversity was initially thought to be low, but an increasing number of  
407 variant sequences have since been detected, indicating that new mutations are continually emerging.  
408 Major variants discovered thus far include the UK variant (clade GR, lineage B.1.1.7), the South  
409 African variant (GH, lineage B.1.351), the Brazilian variant (clade GR, lineage P1), the variant  
410 from California (GH, B.1.429), the Spanish variant, the mink variant, and others. All these SARS-  
411 CoV-2 variants carry characteristic mutations (deletions and/or missense mutations) in different  
412 parts of the genome, some in important regions in terms of potential clinical significance, such as  
413 the gene coding for the spike protein (the S gene). The spike protein appears to be critical for  
414 cellular entry, and allows the virus to attach to the host cell (Pillar et al., 2020), which is why this  
415 protein is also a target for vaccine development and antigen testing.

416 The analysis of SARS-CoV-2 virus genomes can complement and support strategies to reduce the  
417 burden of COVID-19 (WHO, 2021). Whole genome sequencing has proven to be a powerful tool  
418 capable of helping us understand outbreak transmission dynamics and spill-over events and to  
419 screen for mutations with a potential impact on transmissibility, pathogenicity or countermeasures  
420 (e.g. diagnostics, antiviral drugs and vaccines) (WHO, 2020d). For this reason, the WHO  
421 recommends that routine sequencing of SARS-CoV-2 viruses be increased where possible, and  
422 sequence data be shared through open-source platforms (WHO 2020c). The ECDC similarly  
423 encourages EU/EEA states to sequence at least 500 randomly selected samples each week, and to  
424 prioritize samples from large outbreaks, or samples collected from travellers and individuals with an  
425 infection detected 2 weeks after vaccination (ECDC, 2021b).

426 Whole genome sequencing demands substantial investment in terms of time and financial resources,  
427 however, and the acquisition of sufficient, high quality RNA to maximize sequencing yield and the  
428 validity of sequence data. In addition, bioinformatic analysis necessitates high-performance  
429 computational power and trained staff. To address some of these problems, we developed a rapid,  
430 inexpensive and sensitive long nested PCR assay to detect key changes in the S protein of SARS-  
431 CoV-2, indicative of the presence of VOCs 20I/501Y.V1, 20H/501Y.V2 and 20J/501Y.V3, as well  
432 as of other variants of clinical interest. This assay can be used as a first screening tool to select  
433 samples of interest for WGS characterization. Resources for genome sequencing would thus be  
434 optimized by allocating them to clinically relevant specimens. The region amplified by this long  
435 assay was specially chosen to reveal key mutations distinctive of main variants, as shown in Table  
436 1.

437 The discriminatory potential of the long PCR assay was initially explored in silico using GISAID  
438 and Nextclade. Phylogenetic trees predicted the ~1500 bps sequence of the S protein to have the  
439 same discriminatory power as the entire genome in assigning sequences with the S mutations  
440 characteristic of the VOCs to their corresponding clusters. The ability of primer pairs to amplify

441 SARS-CoV-2 RNA and the discriminatory power of the amplified fragments were then tested on  
442 field samples, consisting of SARS-CoV-2 viral isolates, already been fully sequenced. All of the  
443 clinical samples were successfully amplified with the long PCR. The 20I/501Y.V1 and 20E.EU1  
444 variants present in the panel were correctly identified by the long assay. Other variants of concern,  
445 like the Brazilian or the South African variants, were not available to us as field samples. Indeed,  
446 only one case of the South African variant had been detected in Italy, in a man who landed at  
447 Milan's Malpensa Airport from Africa at the end of January  
448 ([https://www.ansa.it/lombardia/notizie/2021/02/03/a-varese-primo-caso-variante-sudafricana-in-italia\\_41b99448-367c-4000-ac88-9b3ae130d839.html](https://www.ansa.it/lombardia/notizie/2021/02/03/a-varese-primo-caso-variante-sudafricana-in-italia_41b99448-367c-4000-ac88-9b3ae130d839.html)). Having downloaded the sequence (GISAID  
449 EPI\_ISL\_1012924), we verified that it harbors the Spike mutations D80A, D215G, L242del,  
450 L244del, K417N, E484K, and N501Y - all of which would have been detectable by our long PCR  
451 assay. Similarly, only three cases of the Brazilian variant had been identified and fully sequenced  
452 (GISAID EPI\_ISL\_875566 to ID EPI\_ISL\_875568) thus far in Italy. All these isolates carry the  
453 characteristic Spike mutations D138Y, R190S E484K, K417T, and N501Y included in our assay.  
454 Once we had confirmed that the developed PCR assay could be successfully used to screen for  
455 variants in clinical samples, we went on to investigate whether this assay could also be used for the  
456 screening of SARS-CoV-2 variants in complex matrices, such as urban wastewaters. Since the  
457 amplification of long fragments poses specific challenges in such matrices, we also designed two  
458 short nested RT-PCR assays targeting portions of the region spanned by the long assay, to be used  
459 in case of long PCR failure. A number of studies have demonstrated the added value of regular  
460 surveillance of wastewaters in combination with other indicators for the management of the  
461 pandemic and a recent document by the European Commission highlights the importance of  
462 wastewater surveillance to allow screening among large population groups (European Commission,  
463 2021). This can help public health authorities identify where more detailed analysis is needed and  
464 speed up the detection of variants as part of an increased genomic and epidemiological surveillance.

466 Two recent papers have demonstrated that environmental surveillance can be used to study SARS-CoV-  
467 2 diversity (Crits-Christoph et al., 2021; Martin et al., 2020). Crits-Christoph and co-workers  
468 sequenced SARS-CoV-2 RNA directly from sewage collected in the San Francisco Bay Area to  
469 generate complete and near-complete SARS-CoV-2 genomes, and found that the major consensus  
470 genotypes detected in the sewage were identical to clinical genomes from the region. Moreover,  
471 additional variants not found in clinical samples, were identified in wastewaters, suggesting that  
472 wastewater sequencing can provide evidence for recent introductions of viral lineages before they  
473 are detected by local clinical sequencing (Crits-Christoph et al., 2021). Metagenomic analysis of  
474 environmental matrices is a complex task, however, with high operational costs and specific  
475 requirements in terms of bioinformatic skills.

476 Martin and co-workers demonstrated changes in virus variant predominance during the COVID-19  
477 pandemic by tracking SARS-CoV-2 in sewage using a nested RT-PCR approach targeting five  
478 different regions of the viral genome (Martin et al., 2020). Here, we adopted a similar approach, but  
479 concentrated on a unique region of the SARS-CoV-2 genome - the spike protein gene, which  
480 harbors several key mutations associated with known VOCs and other variants of interest.

481 The newly-designed assays were therefore used on 34 sewage samples, including 20 SARS-CoV-2-  
482 positive samples collected from WTPs in Rome between September and December 2020, eight  
483 sewage sample collected from a small town in Abruzzo where an outbreak of the UK variant was  
484 reported in mid-January ([https://www.ansa.it/abruzzo/notizie/2021/01/18/covid-a-guardiagrele-36-](https://www.ansa.it/abruzzo/notizie/2021/01/18/covid-a-guardiagrele-36-casi-da-variante-inglese_fbfc1c88-649b-4f32-9042-d1f0648b2bbb.html)  
485 [casi-da-variante-inglese\\_fbfc1c88-649b-4f32-9042-d1f0648b2bbb.html](https://www.ansa.it/abruzzo/notizie/2021/01/18/covid-a-guardiagrele-36-casi-da-variante-inglese_fbfc1c88-649b-4f32-9042-d1f0648b2bbb.html)), and six sewage samples  
486 collected in Perugia, Umbria, where, at the beginning of February, both UK and Brazilian variants  
487 have been documented by public health authorities ([https://www.regione.umbria.it/documents/](https://www.regione.umbria.it/documents/18/25027633/Ordinanza+n.14+del+6+febbraio+2021.pdf)  
488 [18/25027633/Ordinanza+n.14+del+6+febbraio+2021.pdf](https://www.regione.umbria.it/documents/18/25027633/Ordinanza+n.14+del+6+febbraio+2021.pdf)).

489 As expected, only three of the samples could be amplified and successfully sequenced with the long  
490 PCR assay, one from Umbria, the others from Abruzzo. Wastewater is indeed a complex matrix

491 where the amplification of long fragments is seldom achieved, due to the presence of inhibitors,  
492 nucleic acids of different origin, and fragmented target genomes, often in low amounts. The  
493 sequences obtained by the long assay from samples collected in January in Abruzzo showed  
494 mutations characteristic of the Spanish variant, which was indeed the most common variant in the  
495 EU till December 2020 (ECDC, 2021a). The sequence obtained from Perugia displayed instead the  
496 mutations indicative of 20J/501Y.V3. Interestingly, this sample was collected on 6 February 2021  
497 from a WTP serving the outskirts of Perugia, including the local hospital, which had reportedly  
498 been experiencing nosocomial clusters of this variant, as per press releases issued by public health  
499 officials ([https://www.ansa.it/umbria/notizie/2021/02/05/rezza-in-umbria-variante-brasiliana-in-](https://www.ansa.it/umbria/notizie/2021/02/05/rezza-in-umbria-variante-brasiliana-in-cluster-ospedalieri_d50f6dce-9b78-443c-a0d8-0d23e16058a8.html)  
500 [cluster-ospedalieri\\_d50f6dce-9b78-443c-a0d8-0d23e16058a8.html](https://www.ansa.it/umbria/notizie/2021/02/05/rezza-in-umbria-variante-brasiliana-in-cluster-ospedalieri_d50f6dce-9b78-443c-a0d8-0d23e16058a8.html); [https://tg24.sky.it/salute-e-](https://tg24.sky.it/salute-e-benessere/2021/02/08/covid-umbria)  
501 [benessere/2021/02/08/covid-umbria](https://tg24.sky.it/salute-e-benessere/2021/02/08/covid-umbria)).

502 As expected, the two short nested RT-PCR assays were more sensitive than the long one,  
503 successfully amplifying about half of the tested sewage samples. No mutations of interest were  
504 detected in the samples collected in Rome and in Guardiagrele, Abruzzo, using the short assays, as  
505 the mutation A222V, characteristic of the Spanish variant, is not included in the short fragments.  
506 Conversely, sequences obtained from the sewage samples collected in Perugia, Umbria, showed the  
507 presence of mutations characteristic of the UK variant (one sample) and of the Brazilian variant  
508 (three samples, one of which was confirmed by the long assay). Both of these variants had been  
509 circulating in the area according to statements by public health authorities, but no genome  
510 sequences were available at the time of the study.

511 Comparing results obtained by the two nested PCRs for the same sample, concordant results were  
512 obtained for the Brazilian variant (presence of mutation D138Y in the fragment obtained by PCR  
513 973, and mutations E484K/N501Y in the amplicon of PCR 975). In contrast, the sample harboring  
514 mutations of the UK variant in the region amplified by PCR 975 (N501Y and A570D) did not show  
515 the expected mutations (HV69-70del and Y144del) in the region amplified by PCR 973. This

516 exposes a limit of the combined use of two short PCR assays. Since different SARS-CoV-2 strains  
517 may coexist in a single sewage sample, the use of separate tests may result in each of the tests  
518 amplifying a sequence belonging to a different strain. However, our GISAID in silico study showed  
519 the combination of the N501Y and A570D mutations to strongly suggest that the sequence carrying  
520 them belongs to lineage GR B.1.1.7. Furthermore, we only performed classical Sanger sequencing  
521 on PCR amplicons, and this approach may underestimate the existence of some, possibly less  
522 common, sequences. Our next goal is therefore to combine the protocol with NGS on PCR  
523 amplicons for a more in-depth analysis of sequences, as successfully applied to enteric viruses  
524 (Suffredini et al., 2018; Iaconelli et al, 2017).

525 To our knowledge, this is the first evidence of the presence of sequences harboring key mutations of  
526 20I/501Y.V1 and 20J/501Y.V3, as well as of the Spanish variant in urban wastewaters, highlighting  
527 the potential contribution of wastewater surveillance to explore SARS-CoV-2 diversity. Moreover,  
528 we demonstrated the potential of this approach, based on nested amplification followed by  
529 conventional Sanger sequencing, to allow the rapid identification of specific VOCs in the catchment  
530 of any given WTP to quickly identify areas where the intensification of clinical surveillance and/or  
531 targeted preventive intervention is required.

532 In conclusion, the method we propose can be used to rapidly screen SARS-CoV-2-positive samples  
533 for VOCs and other variants of clinical interest. Compared with WGS, conventional RT-PCR  
534 followed by Sanger sequencing can be performed routinely at low cost and does not require  
535 specialized expertise to interpret the results. Through the targeting of key mutations, this approach  
536 could enable the rapid screening of samples and the identification of samples to submit to WGS.  
537 Moreover, the long nested RT-PCR described here can provide significant, albeit partial, molecular  
538 information for samples in which low amounts or poor quality SARS-CoV-2 RNA hamper the  
539 successful application of WGS. The approach can also be applied to environmental samples for the  
540 purposes of SARS-CoV-2 wastewater-based epidemiology, to explore the possible presence of

541 VOCs or other variants of clinical interest, therefore highlighting geographical areas where an  
542 enhancement of clinical monitoring could be beneficial.

543 Due to an increase in the prevalence of new SARS-CoV2 variants with possible clinical  
544 implications, monitoring the spread of different variants in the general population in a timely, cost-  
545 effective manner is of utmost importance. The proposed method can contribute to achieve this goal.

546

547

548 **Declaration of interests**

549 We declare no competing interests.

550 **Acknowledgments**

551

552 This publication was supported by the European Virus Archive Global (EVA-GLOBAL) project,  
553 which provided the coronavirus RNA panel for the assessment of our in-house PCR. The EVA-  
554 GLOBAL project, in turn, received funding from the European Union's Horizon 2020 research and  
555 innovation programme under grant agreement No 871029.

556 Our thanks go to "Project RefBio - Germany's contribution to strengthen the bio-analytical  
557 reference laboratories in the UNSGM (2017-2021), EQAE on SARS-CoV-2 (2020), Centre for  
558 Biological Threats and Special Pathogens (ZBS 1-3) at RKI (Project Coordinator), Berlin,  
559 Germany" for providing the Wuhan strain.

560 We also thank Stefano Fontana for his insightful comments.

561 We thank Luigina Serrecchia, Viviana Manzulli, Valeria Rondinone, Ines della Rovere, Fiorenza  
562 Petrucci and Mr. Guido Asturio for their technical support.

563 We acknowledge the support of Utilitalia, Italian federation of energy, water and environmental  
564 services, and ACEA ATO2 for wastewater sampling in Rome. We also thank Tommaso Pagliani  
565 and Fabio Campitelli of SASI SpA (Società Abruzzese per il Servizio Idrico Integrato) and the  
566 Municipal Authorities for allowing wastewater collection in Guardiagrele (CH), Abruzzo, and  
567 Tiziana Buonfiglio, Andrea Vitali, Paolo Meniconi, Massimo Lorenzetti Renzetti and Marino  
568 Burini, Umbra Acque SpA, for allowing wastewater collection in Perugia, Umbria.

569

570



571 **References**

- 572 Bartolini B, Rueca M, Ernesto C, Gruber M, Messina F, Giombini E, Ippolito G, Capobianchi  
573 M R, Di Caro A. The newly introduced SARS-CoV-2 variant A222V is rapidly spreading in Lazio  
574 region, Italy. medRxiv 2020.11.28.20237016; doi: <https://doi.org/10.1101/2020.11.28.20237016>
- 575 CDC, 2020. Interim: Implications of the Emerging SARS-CoV-2 Variant VOC 202012/01. Interim:  
576 Implications of the Emerging SARS-CoV-2 Variant VOC 202012/01 | CDC, accessed on 12  
577 January, 2021.
- 578 Chand, Meera; Hopkins, Susan; Dabrera, Gavin; Achison, Christina; Barclay, Wendy; Ferguson,  
579 Neil; Volz, Erik; Loman, Nick; Rambaut, Andrew; Barrett, Jeff (21 December 2020). Investigation  
580 of novel SARS-COV-2 variant: Variant of Concern 202012/01 (PDF)(Report). Public Health  
581 England. Retrieved 12 January 2021.
- 582 China CDC Weekly. The Epidemiological Characteristics of an Outbreak of 2019 Novel  
583 Coronavirus Diseases (COVID-19) — China, 2020, COVID-19.pdf.pdf (onb.it)
- 584 Cleemput S, Dumon W, Fonseca V, Karim WA, Giovanetti M, Alcantara LC, Deforche K, de  
585 Oliveira T. Genome Detective Coronavirus Typing Tool for rapid identification and  
586 characterization of novel coronavirus genomes. bioRxiv [Preprint]. 2020 Feb 2:2020.01.31.928796.  
587 doi: 10.1101/2020.01.31.928796. Update in: Bioinformatics. 2020 Jun 1;36(11):3552-3555. PMID:  
588 32511309; PMCID: PMC7217295.
- 589 Conti P, Caraffa A, Gallenga CE, Kritas SK, Frydas I, Younes A, Di Emidio P, Tetè G, Pregliasco  
590 F, Ronconi G. The British variant of the new coronavirus-19 (Sars-Cov-2) should not create a  
591 vaccine problem. J Biol Regul Homeost Agents. 2021 Feb 24;35(1). doi: 10.23812/21-3-E. Epub  
592 ahead of print. PMID: 33377359.

593 Crits-Christoph A, Kantor RS, Olm MR, Whitney ON, Al-Shayeb B, Lou YC, Flamholz A,  
594 Kennedy LC, Greenwald H, Hinkle A, Hetzel J, Spitzer S, Koble J, Tan A, Hyde F, Schroth G,  
595 Kuersten S, Banfield JF, Nelson KL. Genome Sequencing of Sewage Detects Regionally Prevalent  
596 SARS-CoV-2 Variants. *mBio*. 2021 Jan 19;12(1):e02703-20. doi: 10.1128/mBio.02703-20. PMID:  
597 33468686.

598 ECDC, 2020. European Centre for Disease Prevention and Control, 2020. Threat Assessment Brief:  
599 Rapid increase of a SARS-CoV-2 variant with multiple spike protein mutations observed in the  
600 United Kingdom. Threat Assessment Brief: Rapid increase of a SARS-CoV-2 variant with multiple  
601 spike protein mutations observed in the United Kingdom (europa.eu), accessed on 12 January,  
602 2021.

603 ECDC, 2021a. European Centre for Disease Prevention and Control, 2020. Risk related to spread of  
604 new SARSCoV-2 variants of concern in the EU/EEA 29 December 2020

605 ECDC, 2021b. European Centre for Disease Prevention and Control, 2021. Risk of spread of new  
606 SARS-CoV-2 variants of concern in the EU/EEA - first update (europa.eu) ECDC

607 EUROPEAN COMMISSION, 2021. HERA Incubator: Anticipating together the threat of COVID-  
608 19 variants [https://ec.europa.eu/info/sites/info/files/communication-hera-incubator-anticipating-](https://ec.europa.eu/info/sites/info/files/communication-hera-incubator-anticipating-threat-covid-19-variants_en.pdf)  
609 [threat-covid-19-variants\\_en.pdf](https://ec.europa.eu/info/sites/info/files/communication-hera-incubator-anticipating-threat-covid-19-variants_en.pdf)

610 Foladori P, Cutrupi F, Segata N, Manara S, Pinto F, Malpei F, Bruni L, La Rosa G. SARS-CoV-2  
611 from faeces to wastewater treatment: What do we know? A review. *Sci Total Environ*. 2020 Nov  
612 15;743:140444. doi: 10.1016/j.scitotenv.2020.140444. Epub 2020 Jun 24. PMID: 32649988;  
613 PMCID: PMC7311891. GISAID 2020, UK reports new variant, termed VUI 202012/01. GISAID -  
614 UK reports new variant, termed VUI 202012/01, accessed on 12 January, 2021.

615 Galloway SE, Paul P, MacCannell DR, et al. Emergence of SARS-CoV-2 B.1.1.7 Lineage —  
616 United States, December 29, 2020–January 12, 2021. *MMWR Morb Mortal Wkly Rep*. ePub: 15  
617 January 2021. DOI: [http://dx.doi.org/10.15585/mmwr.mm7003e2external icon](http://dx.doi.org/10.15585/mmwr.mm7003e2external%20icon).

618 Groves DC, Rowland-Jones SL, Angyal A. The D614G mutations in the SARS-CoV-2 spike  
619 protein: Implications for viral infectivity, disease severity and vaccine design [published online  
620 ahead of print, 2020 Nov 5]. *Biochem Biophys Res Commun*. 2020;S0006-291X(20)32038-6.  
621 doi:10.1016/j.bbrc.2020.10.109

622 Gu, H. et al. Adaptation of SARS-CoV-2 in BALB/c mice for testing vaccine efficacy. *Science* 369  
623 (2020).

624 Hadfield J, Megill C, Bell SM, Huddleston J, Potter B, Callender C, Sagulenko P, Bedford T, Neher  
625 RA. Nextstrain: real-time tracking of pathogen evolution. *Bioinformatics*. 2018 Dec 1;34(23):4121-  
626 4123. doi: 10.1093/bioinformatics/bty407. PMID: 29790939; PMCID: PMC6247931.

627 Hammer AS, Quaade ML, Rasmussen TB, Fonager J, Rasmussen M, Mundbjerg K, Lohse L,  
628 Strandbygaard B, Jørgensen CS, Alfaro-Núñez A, Rosenstjerne MW, Boklund A, Halasa T,  
629 Fomsgaard A, Belsham GJ, Bøtner A. SARS-CoV-2 Transmission between Mink (*Neovison vison*)  
630 and Humans, Denmark. *Emerg Infect Dis*. 2020 Nov 18;27(2). doi: 10.3201/eid2702.203794. Epub  
631 ahead of print. PMID: 33207152.

632 Hart OE, Halden RU. Computational analysis of SARS-CoV-2/COVID-19 surveillance by  
633 wastewater-based epidemiology locally and globally: Feasibility, economy, opportunities and  
634 challenges. *Sci Total Environ*. 2020 Aug 15;730:138875. doi: 10.1016/j.scitotenv.2020.138875.  
635 Epub 2020 Apr 22. PMID: 32371231; PMCID: PMC7175865.

636 Hodcroft EB, Zuber M, Nadeau S, Crawford KHD, Bloom JD, Veessler D, Vaughan TG, Comas I,  
637 Candelas FG, Stadler T, Neher RA. Emergence and spread of a SARS-CoV-2 variant through  
638 Europe in the summer of 2020. medRxiv [Preprint]. 2020 Nov 27:2020.10.25.20219063. doi:  
639 10.1101/2020.10.25.20219063. PMID: 33269368; PMCID: PMC7709189.

640 Iaconelli M, Valdazo-González B, Equestre M, Ciccaglione AR, Marcantonio C, Della Libera S, La  
641 Rosa G. Molecular characterization of human adenoviruses in urban wastewaters using next  
642 generation and Sanger sequencing. Water Res. 2017 Sep 15;121:240-247. doi:  
643 10.1016/j.watres.2017.05.039. Epub 2017 May 19. PMID: 28550812.

644 . Guthrie JL, Teatero S, Zittermann S, Chen Y, Sullivan A, Rilkoff H, Joshi E, Sivaraman K, de  
645 Borja R, Sundaravadanam Y, Laszloffy M, Heisler L, Allen VG., Simpson JT., Fittipaldi N.  
646 Detection of the Novel SARS-CoV-2 European Lineage B.1.177 in Ontario, Canada.  
647 medRxiv 2020.11.30.20241265; doi: <https://doi.org/10.1101/2020.11.30.20241265>

648 Korber B, Fischer WM, Gnanakaran S, Yoon H, Theiler J, Abfalterer W, Hengartner N, Giorgi EE,  
649 Bhattacharya T, Foley B, Hastie KM, Parker MD, Partridge DG, Evans CM, Freeman TM, de Silva  
650 TI; Sheffield COVID-19 Genomics Group, McDanal C, Perez LG, Tang H, Moon-Walker A,  
651 Whelan SP, LaBranche CC, Sapphire EO, Montefiori DC. Tracking Changes in SARS-CoV-2 Spike:  
652 Evidence that D614G Increases Infectivity of the COVID-19 Virus. Cell. 2020 Aug 20;182(4):812-  
653 827.e19. doi: 10.1016/j.cell.2020.06.043. Epub 2020 Jul 3. PMID: 32697968; PMCID:  
654 PMC7332439.

655 La Rosa G, Mancini P, Bonanno Ferraro G, Veneri C, Iaconelli M, Bonadonna L, Lucentini L,  
656 Suffredini E. SARS-CoV-2 has been circulating in northern Italy since December 2019: Evidence  
657 from environmental monitoring. Sci Total Environ. 2021 Jan 1;750:141711. doi:  
658 10.1016/j.scitotenv.2020.141711. Epub 2020 Aug 15. PMID: 32835962; PMCID: PMC7428442.

659 Leung K, Shum MH, Leung GM, Lam TT, Wu JT. Early transmissibility assessment of the N501Y  
660 mutant strains of SARS-CoV-2 in the United Kingdom, October to November 2020. *Euro Surveill.*  
661 2021 Jan;26(1):2002106. doi: 10.2807/1560-7917.ES.2020.26.1.2002106. PMID: 33413740;  
662 PMID: PMC7791602.

663 Li Q, Wu J, Nie J, Zhang L, Hao H, Liu S, Zhao C, Zhang Q, Liu H, Nie L, Qin H, Wang M, Lu Q,  
664 Li X, Sun Q, Liu J, Zhang L, Li X, Huang W, Wang Y. The Impact of Mutations in SARS-CoV-2  
665 Spike on Viral Infectivity and Antigenicity. *Cell.* 2020 Sep 3;182(5):1284-1294.e9. doi:  
666 10.1016/j.cell.2020.07.012. Epub 2020 Jul 17. PMID: 32730807; PMID: PMC7366990.

667 Maggi F, Novazzi F, Genoni A, Baj A, Spezia PG, Focosi D, Zago C, Colombo A, Cassani G,  
668 Pasciuta R, Tamborini A, Rossi A, Prestia M, Capuano R, Azzi L, Donadini A, Catanoso G, Grossi  
669 PA, Maffioli L, Bonelli G. Imported SARS-COV-2 Variant P.1 Detected in Traveler Returning  
670 from Brazil to Italy. *Emerg Infect Dis.* 2021 Feb 10;27(4). doi: 10.3201/eid2704.210183. Epub  
671 ahead of print. PMID: 33567246.

672 Mahase, 2020. Covid-19: What have we learnt about the new variant in the UK?  
673 *BMJ* 2020; 371 doi: <https://doi.org/10.1136/bmj.m4944> (Published 23 December 2020)

674 Martin J, Klapsa D, Wilton T, Zambon M, Bentley E, Bujaki E, Fritzsche M, Mate R, Majumdar M.  
675 Tracking SARS-CoV-2 in Sewage: Evidence of Changes in Virus Variant Predominance during  
676 COVID-19 Pandemic. *Viruses.* 2020 Oct 9;12(10):1144. doi: 10.3390/v12101144. PMID:  
677 33050264; PMID: PMC7601348.

678 Martin J, Klapsa D, Wilton T, Zambon M, Bentley E, Bujaki E, Fritzsche M, Mate R, Majumdar M.  
679 Tracking SARS-CoV-2 in Sewage: Evidence of Changes in Virus Variant Predominance during  
680 COVID-19 Pandemic. *Viruses.* 2020 Oct 9;12(10):1144. doi: 10.3390/v12101144. PMID:  
681 33050264; PMID: PMC7601348.

682 Martínez-Puchol S, Rusiñol M, Fernández-Cassi X, Timoneda N, Itarte M, Andrés C, Antón A,  
683 Abril JF, Girones R, Bofill-Mas S. Characterisation of the sewage virome: comparison of NGS  
684 tools and occurrence of significant pathogens. *Sci Total Environ.* 2020 Apr 15;713:136604. doi:  
685 10.1016/j.scitotenv.2020.136604. Epub 2020 Jan 8. PMID: 31955099.

686 NERVTAG, 2020. New and Emerging Respiratory Virus Threats Advisory Group. NERVTAG  
687 meeting on SARS-CoV-2 variant under investigation VUI-202012/01, 18 December 2020.  
688 [NERVTAG meeting minutes on SARS-CoV-2 variant under investigation. 18 December](#)  
689 [\(khub.net\)](#), accessed on 12 January, 2021.

690 NIID, 2021. Brief report: New Variant Strain of SARS-CoV-2 Identified in Travelers from Brazil.  
691 PUBLISHED: 12 JANUARY 2021. Brief report: New Variant Strain of SARS-CoV-2 Identified in  
692 Travelers from Brazil ([niid.go.jp](http://niid.go.jp)). Accessed on 16 January 2021.

693

694 Public Health England (PHE) 2021. Investigation of novel SARS-CoV-2 variant: Variant of  
695 Concern 202012/01, Technical briefing 5. 2020 [updated January 2021]. Available from:  
696 [https://assets.publishing.service.gov.uk/government/uploads/system/uploads/attachment\\_data/file/9](https://assets.publishing.service.gov.uk/government/uploads/system/uploads/attachment_data/file/957504/Variant_of_Concern_VOC_202012_01_Technical_Briefing_5_England.pdf)  
697 [57504/Variant of Concern VOC 202012 01 Technical Briefing 5 England.pdf](https://assets.publishing.service.gov.uk/government/uploads/system/uploads/attachment_data/file/957504/Variant_of_Concern_VOC_202012_01_Technical_Briefing_5_England.pdf)

698 Pillay TS. Gene of the month: the 2019-nCoV/SARS-CoV-2 novel coronavirus spike protein. *J Clin*  
699 *Pathol.* 2020 Jul;73(7):366-369. doi: 10.1136/jclinpath-2020-206658. Epub 2020 May 6. PMID:  
700 32376714.

701 Ester C Sabino, Lewis F Buss, Maria P S Carvalho, Carlos A Prete Jr, Myuki A E Crispim, Nelson  
702 A Fraiji, Rafael H M Pereira, Kris V Parag, Pedro da Silva Peixoto, Moritz U G Kraemer, Marcio K  
703 Oikawa, Tassila Salomon, Zulma M Cucunuba, Márcia C Castro, Andreza Aruska de Souza Santos,

704 Vítor H Nascimento, Henrique S Pereira, Neil M Ferguson, Oliver G Pybus, Adam Kucharski,  
705 Michael P Busch, Christopher Dye, Nuno R Faria. Resurgence of COVID-19 in Manaus, Brazil,  
706 despite high seroprevalence. *The Lancet*, Published: January 27,  
707 2021 DOI: [https://doi.org/10.1016/S0140-6736\(21\)00183-5](https://doi.org/10.1016/S0140-6736(21)00183-5)

708 Starr, Tyler N., Allison J. Greaney, Sarah K. Hilton, Daniel Ellis, Katharine H. D. Crawford, Adam  
709 S. Dingens, Mary Jane Navarro, et al. 2020. “Deep Mutational Scanning of SARS-CoV-2 Receptor  
710 Binding Domain Reveals Constraints on Folding and ACE2 Binding.” *Cell* 182 (5): 1295–  
711 1310.e20.

712 Statens Serum Institut, Copenhagen S, DENMARK, 2020. Preliminary rapport on SARS-CoV-2  
713 spike mutations arising in Danish mink, 2 their spread to humans and neutralization data. SARS-  
714 CoV-2 spike mutations arising in Danish mink and their spread to 5 humans

715 Suffredini E, Iaconelli M, Equestre M, Valdazo-González B, Ciccaglione AR, Marcantonio C, Della  
716 Libera S, Bignami F, La Rosa G. Genetic Diversity Among Genogroup II Noroviruses and  
717 Progressive Emergence of GII.17 in Wastewaters in Italy (2011-2016) Revealed by Next-  
718 Generation and Sanger Sequencing. *Food Environ Virol.* 2018 Jun;10(2):141-150. doi:  
719 10.1007/s12560-017-9328-y. Epub 2017 Nov 28. Erratum in: *Food Environ Virol.* 2018 May 4;:  
720 PMID: 29185203.

721 Volz E, Hill V, McCrone JT, Price A, Jorgensen D, O’Toole Á, Southgate J, Johnson R, Jackson B,  
722 Nascimento FF, Rey SM, Nicholls SM, Colquhoun RM, da Silva Filipe A, Shepherd J, Pascall DJ,  
723 Shah R, Jesudason N, Li K, Jarrett R, Pacchiarini N, Bull M, Geidelberg L, Siveroni I; COG-UK  
724 Consortium, Goodfellow I, Loman NJ, Pybus OG, Robertson DL, Thomson EC, Rambaut A,  
725 Connor TR. Evaluating the Effects of SARS-CoV-2 Spike Mutation D614G on Transmissibility and

726 Pathogenicity. Cell. 2021 Jan 7;184(1):64-75.e11. doi: 10.1016/j.cell.2020.11.020. Epub 2020 Nov  
727 19. PMID: 33275900; PMCID: PMC7674007.

728 Shu Y, McCauley J. GISAID: Global initiative on sharing all influenza data - from vision to reality.  
729 Euro Surveill. 2017 Mar 30;22(13):30494. doi: 10.2807/1560-7917.ES.2017.22.13.30494. PMID:  
730 28382917; PMCID: PMC5388101.

731 Suffredini E, Iaconelli M, Equestre M, Valdazo-González B, Ciccaglione AR, Marcantonio C, Della  
732 Libera S, Bignami F, La Rosa G. Genetic Diversity Among Genogroup II Noroviruses and  
733 Progressive Emergence of GII.17 in Wastewaters in Italy (2011-2016) Revealed by Next-  
734 Generation and Sanger Sequencing. Food Environ Virol. 2018 Jun;10(2):141-150. doi:  
735 10.1007/s12560-017-9328-y. Epub 2017 Nov 28. Erratum in: Food Environ Virol. 2018 May 4;:  
736 PMID: 29185203.

737 WHO, 2020a. WHO Director-General's opening remarks at the media briefing on COVID-19 - 11  
738 March 2020. 11 March 2020

739 WHO, 2020b. Emergencies preparedness, response. SARS-CoV-2 mink-associated variant strain –  
740 Denmark Disease Outbreak News.6 November 2020. WHO | SARS-CoV-2 mink-associated variant  
741 strain – Denmark

742 WHO 2020c. Emergencies preparedness, response. SARS-CoV-2 Variant, WHO | SARS-CoV-2  
743 Variants

744 WHO 2020d. SARS-CoV-2 Variant – United Kingdom of Great Britain and Northern Ireland  
745 Disease Outbreak News, 21 December 2020 WHO | SARS-CoV-2 Variant – United Kingdom of  
746 Great Britain and Northern Ireland



747 WHO, 2021. Genomic sequencing of SARS-CoV-2 A guide to implementation for maximum  
748 impact on public health 8 January 2021. [9789240018440-eng.pdf](#)

749

750

Figure 1. Positions of the primers in the newly designed PCR assays in the Spike gene of SARS-CoV-2

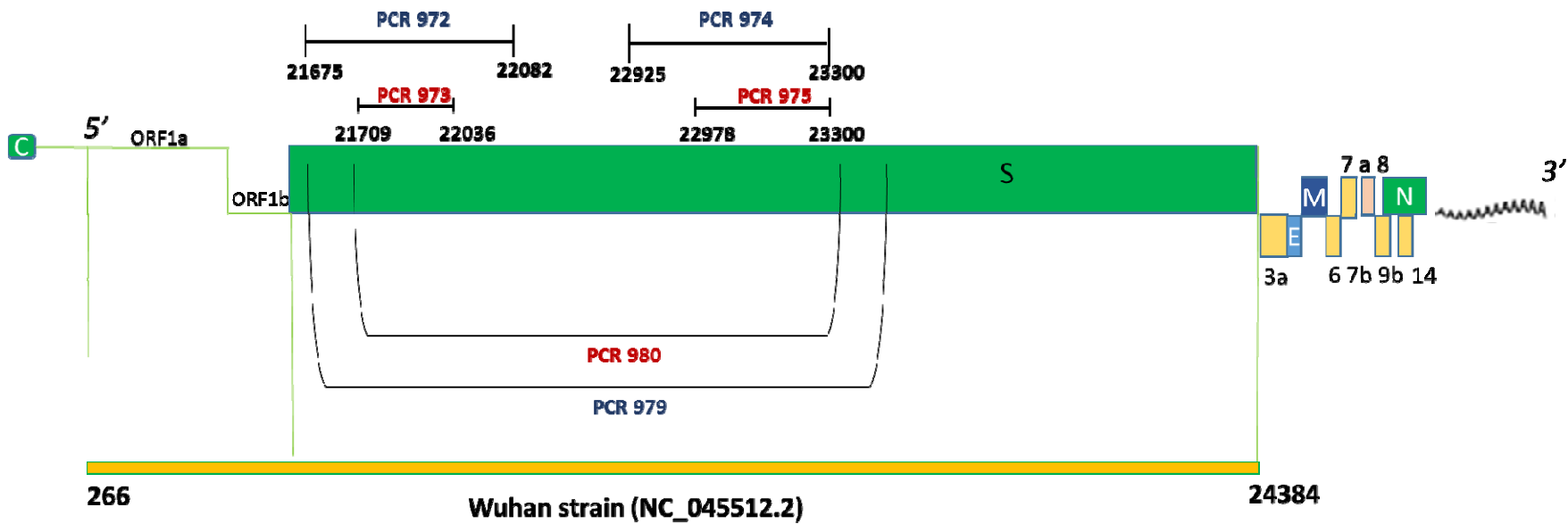
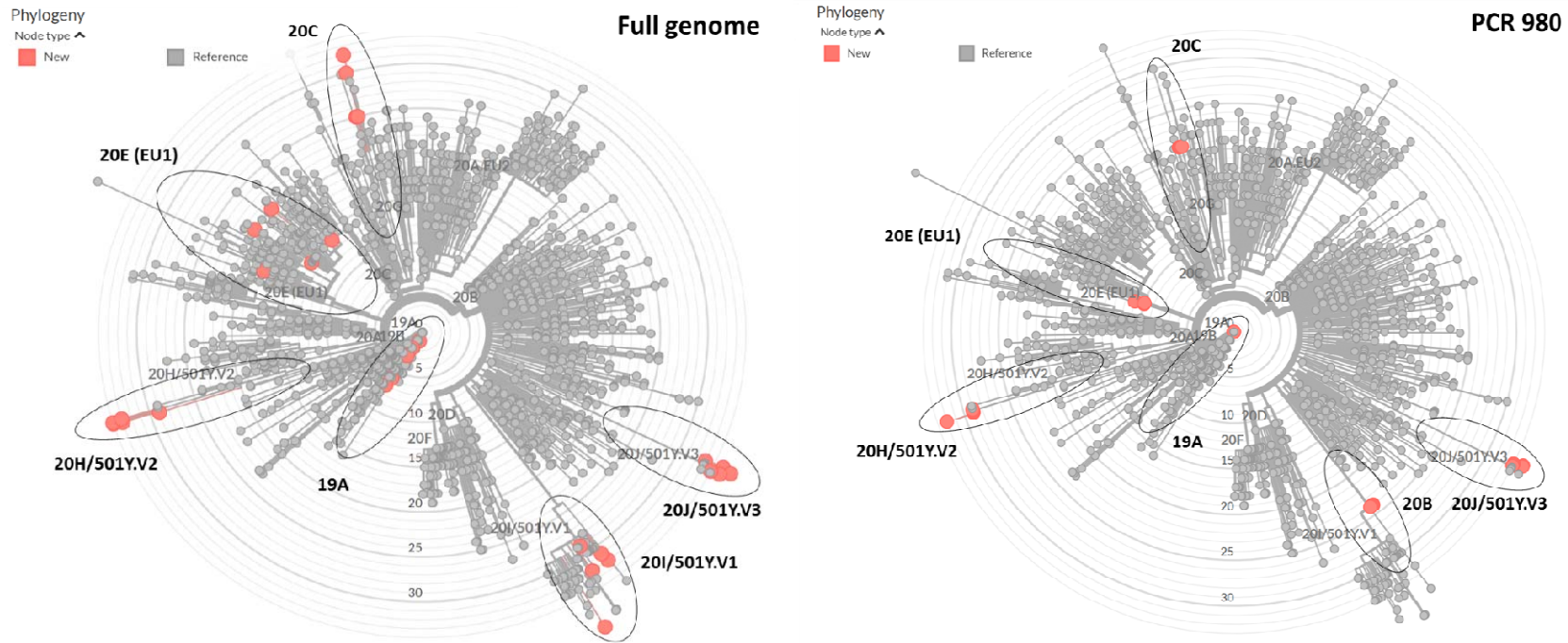


Figure 2. Nextclade web tool phylogenetic trees for representative strains of the different variants using the full genome or the Spike partial gene fragment amplified with PCR ID 980 - nextstrain.org with ad hoc modifications.



**Table 1. Mutations indicative of the main SARS-CoV-2 VOC detectable by the newly designed PCR assays**

Variant	Nucleotide position in the S gene																				
	207	210	240	414	432	456	570	645	666	726	729	732	735	738	1251	1356	1359	1452	1503	1710	
<b>20I/501Y.V1</b> (GR, B.1.1.7)	H69 del	V70 del			Y144 del															N501Y	A570D
<b>20H/501Y.V2</b> (GH, B.1.351)			D80A					D215G		L242H	A243 del	L244 del	H245 del	R246I	K417N					E484K	N501Y
<b>20J/501Y.V3</b> (GR, P1)				D138Y			R190S								K417T					E484K	N501Y
<b>20E.EU1</b> (GV, B.1.177)									A222V												
<b>CAL 20C</b> (GH, B.1.429)						W152C											L452R				
<b>Mink cluster V</b> (GR, B.1.1.298)	H69 del	V70 del																			Y453F
<b>PCR ID</b>	<b>PCR 973 (171-452)</b>																				
<b>(nt position in the S gene)</b>	<b>PCR 980 (171-1719)</b>															<b>PCR 975 (1436-1719)</b>					

**Table 2: Primers and PCRs used in this study**

PCR ID	Primer ID and sequence (5'-3')	Positions *	Amplicon (bps)
972	2319 ACCCTGACAAAGTTTTCAGATCCT	21675-21698	1 <sup>st</sup> cycle
	2320 GCTGAGAGACATATTCAAAGTGCA	22082-22058	399 to 408 bps
973	2321 TTCAACTCAGGACTTGTTCTTACC	21709-21732	nested
	2322 TCTGAACTCACTTTCATCCAA	22036-22015	319 to 327 bps
974	2323 TTGTTTAGGAAGTCTAATCTCAAACC	22925-22950	1 <sup>st</sup> cycle
	2326 GTGGATCACGGACAGCATC	23300-23282	375 bps
975	2325 CTATCAGGCCGGTAGCACAC	22978-22997	hemi-nested
	2326 GTGGATCACGGACAGCATC	23300-23282	323 bps
979	2319 ACCCTGACAAAGTTTTCAGATCCT	21675-21698	1 <sup>st</sup> cycle
	2324 CCTGATAAAGAACAGCAACCTG	23402-23381	1719**-1728 bps
980	2321 TTCAACTCAGGACTTGTTCTTACC	21709-21732	nested
	2326 GTGGATCACGGACAGCATC	23300-23282	1583**-1592 bps

\* Reference genome NC45512.2 (Wuhan)

\*\* Expected size for the 'UK variant'

**Table 3: Variant analysis of clinical samples obtained using PCR ID 980 and different bioinformatics tools**

Sample ID	Identification based on WGS	Mutation map <sup>1</sup>	GISAID blast	Nextclade
swab_25	G B.1 / 20A	-	Not assignable <sup>2</sup>	19A
swab_26	G B.1 / 20A	D215H	Not assignable <sup>3</sup>	19A
swab_27	GR B.1.1.316 / 20B	-	Not assignable <sup>2</sup>	19A
swab_28	GR B.1.1.229 / 20B	-	Not assignable <sup>2</sup>	19A
swab_29	GV B.1.177 / 20E EU1	A222V	GV_B.1.177	20E (EU1)
swab_30	GV B.1.177 / 20E EU1	A222V	GV_B.1.177	20E (EU1)
swab_31	GR B.1.1.7 / 20I/501Y.V1	H69del, V70del, Y144del, N501Y, A570D	GR/501Y.V1 (B.1.1.7)	20B

<sup>1</sup> Analysis with GISAID CoVsurver: Mutation Analysis (<https://www.gisaid.org/epiflu-applications/covsurver-mutations-app/>)

<sup>2</sup> 100% identity with sequences assigned to the following clades: GR\_B.1.1.222; GR\_B.1.1.70; GR\_B.1.1.119; GR\_B.1.1.28; GR\_B.1.1.316; GR\_B.1.1.33; GR\_B.1.1.103; GH\_B.1.2; GH\_B.1.425; G\_B.1; G\_B.1.91; GH\_B.1.4703

<sup>3</sup> 100% identity with sequences assigned to the following clades: G\_B.1; GH\_B.1.2; GR\_B.1.1.47; GR\_B.1.1.304; GR\_B.1.1.127; GR\_B.1.1.284; GR\_B.1.1.119; O\_B-13

n.d. not done due to absence of PCR amplification

**Table 4. Variant analysis of environmental samples obtained using PCR IDs 980, 973, and 975**

Sample ID	Sampling location	PCR ID 980		PCR ID 973		PCR ID 975	
		result	mutations	result	mutations	result	mutations
<i>Archive samples</i>							
3716	Rome East	-		-		+	none
3732	Rome North	-		+	none	+	none
3737	Rome East	-		-		+	none
3738	Rome East	-		+	none	+	none
3740	Rome East	-		-		+	none
3742	Rome Ostia	-		+	none	+	none
3750	Rome North	-		-		+	none
3798	Rome East	-		+	none	+	none
3801	Rome East	-		+	none	-	
3802	Rome East	-		-		+	none
3805	Rome East	-		+	none	-	
3808	Rome South	-		+	none	-	
3809	Rome Ostia	-		+	none	+	none
<i>Ad-hoc samples from outbreak locations</i>							
3862	Guardiagrele	-		+	none	+	none
3863	Guardiagrele	+	A222V	+	none	+	none
3865	Guardiagrele	+	A222V	+	none	-	
3944	Perugia	-		+	D138Y	+	E484K, N501Y
3945	Perugia	-		+	D138Y	+	E484K, N501Y
3947	Perugia	+	D138Y, R190S, K417T, E484K, and N501Y	+	D138Y	+	E484K, N501Y
3949	Perugia	-		+	E96G	+	N501Y, A570D

Samples IDs 3702, 3714, 3720, 3739, 3744, 3797, 3815, 3864, 3868, 3869, 3946 and 3948 did not provide amplification in any of the assays and were not included in the table.