

1 **COVID-19 mRNA vaccine is not detected in human milk**

2 Yarden Golan, Ph.D., Mary Prahl, M.D., Arianna Cassidy, M.D., Ph.D., Christine Y. Lin, Nadav
3 Ahituv, Ph.D., Valerie J. Flaherman, M.D., M.P.H., Stephanie L. Gaw, M.D., Ph.D.

4 **Author Affiliations**

5 From the Department of Bioengineering and Therapeutic Sciences, University of California, San
6 Francisco (Y.G., N.A.), Institute for Human Genetics, University of California, San Francisco
7 (Y.G., N.A.), Department of Pediatrics, University of California, San Francisco (M.P., V.F.),
8 Division of Pediatric Infectious Diseases and Global Health, University of California, San
9 Francisco (M.P.), Division of Maternal-Fetal Medicine, Department of Obstetrics, Gynecology,
10 and Reproductive Sciences, University of California San Francisco (C.Y.L., A.C., S.L.G.).

11 Corresponding author: Stephanie L. Gaw- Division of Maternal-Fetal Medicine, Department of
12 Obstetrics, Gynecology, and Reproductive Sciences, University of California San Francisco, 513
13 Parnassus Ave, HSE16, Box 0556, San Francisco, CA 94143. Phone: 415.476.0535. Email:
14 Stephanie.Gaw@ucsf.edu

15 **Abstract**

16 Several countries have recently approved the use of mRNA vaccines against COVID-19 under
17 an emergency use authorization. However, no pregnant or lactating individuals were included in
18 the Phase 3 clinical trials of these vaccines despite belonging to a group at high risk for severe
19 complications of COVID-19 infection. We show here that the mRNA from anti-COVID
20 BNT162b2 (Pfizer) and mRNA-1273 (Moderna) vaccines is not detected in human breast milk
21 samples collected 4-48 hours post-vaccine. These results strengthen the recommendation of
22 ABM and WHO that lactating individuals who receive the anti-COVID-19 mRNA-based vaccine
23 should continue to breastfeed their infants uninterrupted.

24 **Introduction**

25 Several countries have recently approved the use of mRNA vaccines against COVID-19 under
26 an emergency use authorization ¹. However, no pregnant or lactating individuals were included
27 in the Phase 3 clinical trials of these vaccines despite belonging to a group at high risk for
28 severe complications of COVID-19 infection ^{2,3}. As a result, there are no clinical data regarding
29 the safety or efficacy of the vaccine in these populations. The World Health Organization (WHO)
30 recommends breastfeeding people to obtain the vaccine if they are at a group recommended for
31 vaccination (e.g. health workers), and does not advise cessation of breastfeeding following
32 receipt of the vaccine ⁴. The Academy of Breastfeeding Medicine (ABM) states that there is little
33 plausible risk that vaccine lipid particles would enter the blood stream and be present in breast
34 tissue, and that nanoparticles or mRNA would be transferred to milk ⁵. However, regardless of
35 the low predicted risk of harm to the baby, some mothers have declined vaccination, chosen to
36 “pump and dump” breast milk for up to 72 hours after the vaccine, or decided to stop
37 breastfeeding due to the lack of solid evidence about the effect of the mRNA vaccine on human
38 milk.

39 We herein report that analysis of milk samples collected from six individuals within 24 hours
40 after mRNA vaccination against COVID-19, and of six serial milk samples collected 4, 8, 22, 28,
41 33, and 48 hours post vaccine showed no evidence of vaccine-related mRNA in breast milk.

42

43 **Methods:**

44 The University of California San Francisco (UCSF) institutional review board approved the study
45 (20-32077). Informed consent was obtained from all study participants.

46 Human breast milk samples were collected fresh or frozen (immediately after milk was
47 pumped). Total RNA was isolated from milk components (cells, milk supernatant and/or fat

48 layer) using the RNeasy Mini Kit (Qiagen) according to manufacturer's protocol. We performed
49 RT-qPCR in triplicate using specific primers (supplementary materials) targeting the vaccines
50 mRNA for SARS-CoV-2 spike protein. mRNA-1273 (Moderna) vaccine was spiked into pre-
51 vaccine milk sample before RNA isolation and served as a positive control for this assay. Pre-
52 vaccine samples served as negative controls.

53 **Results:**

54 Post-vaccine human milk samples were collected from six individuals 4-48 hours after
55 administration, 5 vaccinated with BNT162b2 (Pfizer) and 1 individual with mRNA-1273
56 (Moderna) vaccine (**Table 1**). We first optimized our RT-qPCR by isolating the residual vaccine
57 mRNA from vials, showing that our assay is capable to detect up to 1.5 pico grams of the
58 mRNA-1273 vaccine cDNA and up to 0.195 pico grams of the BNT162b2 vaccine (**Figure 1A**).
59 We next used pre-vaccine milk samples and spiked-in the mRNA-1273 vaccine (12 and
60 0.12ng/ul vaccine mRNA). RNA was extracted from the supernatant and fat layer of these
61 spiked-in milk samples. We were able to detect the spiked-in vaccine mRNA in these samples
62 (**Figure 1B**), with higher levels of vaccine mRNA in fat layer fraction (**Figure 1B**). We next
63 analyzed 12 post-vaccine samples (4-48 hours post vaccine, **Table 1**) and found that none of
64 the samples from vaccinated lactating mothers showed detectable levels of vaccine mRNA in
65 milk fat layer or milk supernatant at any time point (7 samples from 24h post vaccine are shown
66 in **Figure 1B**).

67 **Conclusion:**

68 We show here that the mRNA from anti-COVID vaccines is not detected in human breast milk
69 samples collected 4-48 hours post-vaccine. These results strengthen the recommendation of
70 ABM and WHO that lactating individuals who receive the anti-COVID-19 mRNA-based vaccine
71 should continue to breastfeed their infants uninterrupted. Clinical data from larger populations

72 need to be collected and analyzed to better estimate the effect of these vaccines on lactation
73 outcomes.

74

75 **References:**

- 76 1. Krause PR, Gruber MF. Emergency Use Authorization of Covid Vaccines — Safety and
77 Efficacy Follow-up Considerations. *N Engl J Med*. 2020;383(19):e107.
78 doi:10.1056/nejmp2031373
- 79 2. Woodworth KR, Olsen EO, Neelam V, et al. Birth and Infant Outcomes Following
80 Laboratory-Confirmed SARS-CoV-2 Infection in Pregnancy — SET-NET, 16 Jurisdictions,
81 March 29–October 14, 2020. *MMWR Morb Mortal Wkly Rep*. 2020;69(44):1635-1640.
82 doi:10.15585/mmwr.mm6944e2
- 83 3. Bardaji A, Sevene E, Cutland C, et al. The need for a global COVID-19 maternal
84 immunisation research plan. *Lancet*. 2021;0(0). doi:10.1016/s0140-6736(21)00146-x
- 85 4. The Moderna COVID-19 (mRNA-1273) vaccine: what you need to know.
86 [https://www.who.int/news-room/feature-stories/detail/the-moderna-covid-19-mrna-1273-](https://www.who.int/news-room/feature-stories/detail/the-moderna-covid-19-mrna-1273-vaccine-what-you-need-to-know)
87 [vaccine-what-you-need-to-know](https://www.who.int/news-room/feature-stories/detail/the-moderna-covid-19-mrna-1273-vaccine-what-you-need-to-know). Accessed February 13, 2021.
- 88 5. ABM Statement: Considerations for COVID-19 Vaccination in Lactation.
89 [https://abm.memberclicks.net/abm-statement-considerations-for-covid-19-vaccination-in-](https://abm.memberclicks.net/abm-statement-considerations-for-covid-19-vaccination-in-lactation)
90 [lactation](https://abm.memberclicks.net/abm-statement-considerations-for-covid-19-vaccination-in-lactation). Accessed February 13, 2021.

91

92 **Acknowledgment:**

93 We would like to acknowledge the milk donors that volunteered to this study. In addition, we
94 would like to acknowledge Kenneth Scott and Hannah Jang MSN, PhD for their contribution to
95 this study.

96

97 **Conflict of interest:**

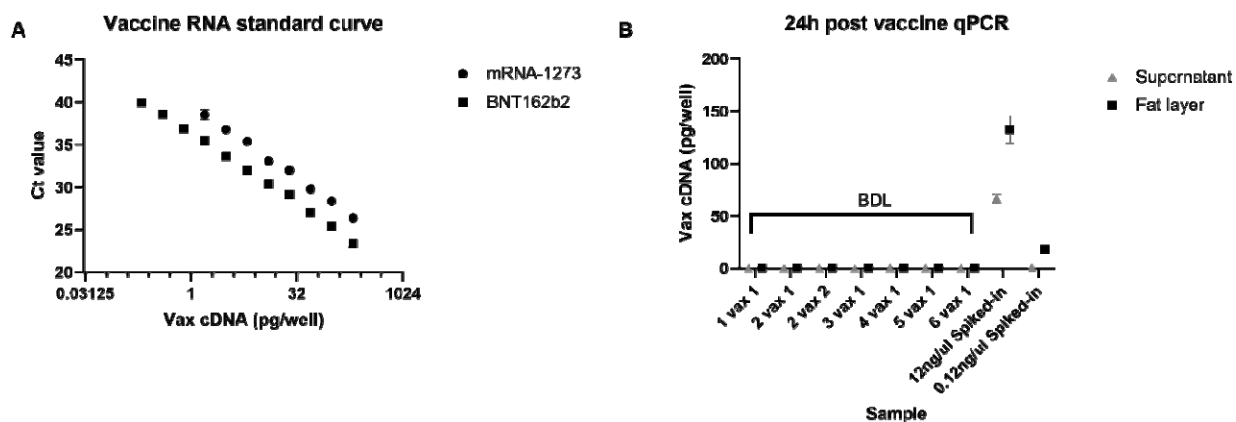
98 The authors declare no conflict of interest.

99 **Funding:**

100 Yarden Golan is an Awardee of the Weizmann Institute of Science -National Postdoctoral Award
101 Program for Advancing Women in Science, of the International Society for Research In Human
102 Milk and Lactation (ISRHML) Trainee Bridge Fund, and of the Human Frontier Science
103 Program.

104

Figure 1



105

106

107 **Figure 1- qPCR analysis of post vaccine milk samples.** A) standard curves for mRNA-1273
108 and BNT162b2 vaccines. B) mRNA concentrations of 24h post vaccine samples and spiked-in
109 samples were calculated based on equations from standard curves. Samples names stands for
110 participant number and if sample was collected after first (1) or second (2) vaccine (vax). Below
111 detectable levels (BDL). Mean values \pm SD are shown.

Table 1: Samples analyzed by qPCR analysis

Participant number	Vaccine	Time point	Collection Method		Milk Fraction		
			Fresh	Frozen	Supernatant	Fat	Cells
1	BNT162b2	Pre-vaccine		X	X		
		24h postvaccine 1		X	X	X	
2	BNT162b2	Pre-vaccine		X	X	X	
		24h postvaccine 1		X	X	X	
		24h postvaccine 2		X		X	
3	BNT162b2	24h postvaccine 1		X		X	
4	mRNA-1273	8h postvaccine 1		X	X	X	
		<24h postvaccine 1		X	X	X	
		28h postvaccine 1		X	X	X	
		33h postvaccine 1		X	X	X	
		48h postvaccine 1		X	X	X	
		4h post vaccine 2		X	X	X	
5	BNT162b2	24h postvaccine 1	X		X	X	
6	BNT162b2	Pre-vaccine		X	X	X	X
		24h postvaccine 1	X		X	X	X

112

113