

Title: Opening schools and trends in SARS-CoV-2 transmission in European countries

3

Authors: Alessandra Buja¹, Matteo Paganini², Vittorio Cristofori¹, Tatjana Baldovin¹, Riccardo Fusinato³, Giovanna Boccuzzo³, Silvia Cocchio¹, Silvia Coretti⁴, Vincenzo Rebba⁴, Maria Parpinel

6

Affiliations

1) *Department of Cardiologic, Vascular and Thoracic Sciences, and Public Health, University of Padova. Via Loredan 18, 35131, Padova, Italy.*

2) *Department of Biomedical Sciences, University of Padova. Via Marzolo 3, 35131 Padova, Italy.*

3) *Department of Statistical Sciences, University of Padova. Via Battisti 241, 35121 Padova, Italy.*

4) *Department of Economics and Management "Marco Fanno", University of Padova. Via del Santo 33, 35123, Padova, Italy.*

5) *Azienda Ospedaliero-Universitaria "Santa Maria della Misericordia", Istituto di Igiene ed Epidemiologia*

Corresponding author: Matteo Paganini, MD. Department of Biomedical Sciences, University of Padova, Via Marzolo 3, 35131 Padova, Italy. Phone: +39 049-8275387.

Email: matteo.paganini@unipd.it ORCID No. 0000-0002-7556-6928

Running title: Schools and the spread of SARS-CoV-2

Keywords: COVID-19; pandemic; education; schools; public health

NOTE: This preprint reports new research that has not been certified by peer review and should not be used to guide clinical practice.

Abstract

24 **Background:** It is important to understand the role of schools in the community transmission of
SARS-CoV-2, bearing in mind that children and adolescents can spread the infection within fami-
lies, even when their own symptoms are mild. The aim of this study was to examine the trends of
27 contagion before and after schools reopened across 27 countries in the European Union.

Methods: All data on the number of people testing positive for COVID-19 in each European coun-
try were collected from 20 days before schools reopened to 45 days afterwards. The Joinpoint re-
30 gression method was used to detect single change points on the trend of contagion. The Bayesian
Information Criterion (BIC) was used for model selection purposes.

Results: We calculated 27 linear regression models for the daily case numbers of SARS-CoV-2 in-
33 fection in the 27 countries from 20 days before schools reopened to 45 days afterwards. A signifi-
cant increase in the number of daily infections was seen for 21 countries after a change point in the
linear regression lines. The change points in different countries varied, ranging from 10 to 42 days
36 after schools reopened, with the majority occurring beyond the 21st day.

Conclusion: This study analysed the trend of SARS-CoV-2 transmission before and after schools
reopened in Europe. We observed a significant increase in the number of new daily cases in most
39 countries. This issue poses a public health problem that needs to be taken into account in deciding
strategies to contain the spread of COVID-19.

BACKGROUND

42 A large-scale epidemic of COVID-19 caused by the severe acute respiratory syndrome coronavirus
2 has been occurring in Europe since January 2020 ¹. To mitigate community transmission of
COVID-19, European governments introduced sweeping non-pharmaceutical interventions (NPIs)
45 during the first and second waves of the epidemic. These measures have varied from one country to
another, but have generally involved isolating confirmed cases, quarantine for contacts, social dis-
tancing, international and national travel restrictions, and the closure of schools and non-essential
48 (or less-essential) shops and services ².

The specific burden of each measure is hard to estimate because they have often been imposed
more or less simultaneously, and also because testing policies have changed over time ³.

51 It is important to understand the role of schools in the community transmission of SARS-CoV-2,
bearing in mind that children and adolescents can spread the infection within families, even when
their symptoms are mild ⁴.

54 Many countries and media have reported clusters in kindergartens, and in primary and secondary
schools ⁵⁻⁸. The prevalence of confirmed cases of SARS-CoV-2 infection in schools seems to be in-
fluenced mainly by the level of transmission in the local community ⁹. Transmission between chil-
57 dren in the same class seems to be rare ¹⁰, due to the use of face masks, frequent hand washing, so-
cial distancing, and aeration. The risk of infection differs for different age groups, however. There
is evidence of contagion rates usually being low in early childhood ^{11,12}, probably due to children
60 being less susceptible to SARS-CoV-2, while markedly higher rates are seen among adolescents.

Attending school involves groups having lessons together in classrooms for several hours, and also
other issues unconnected to face-to-face teaching, such as the use of public transport and eating
63 meals, which need to be taken into account. Another important factor concerns social contact,
which is known to be greater among adolescents, whose school attendance is often combined with
other types of behaviour that could facilitate the spread of viral infections, such as the use of public

66 transport, meeting in bars or similar venues after lessons, and studying together. The contribution of
this age group to the transmission of COVID-19 remains unclear, however.

In this study, we examined the trends of contagion before and after schools reopened across the 27
69 countries of the European Union.

METHODS

Data on the daily numbers of people testing positive for COVID-19 for each European country were
72 obtained from the Our World in Data (OWID) Coronavirus pandemic website, which is updated
daily ¹³. OWID is a project run by the Global Change Data Lab, a registered charity in England and
Wales. All data were collected from 20 days before schools reopened in each country to 45 days af-
75 terwards in 2020. Spain has not provided data on the number of new cases of infection identified
between Saturday and Sunday of each week since January 2020.

The dates when schools restarted in each European country were obtained from documents pub-
78 lished by the Education, Audiovisual and Culture Executive Agency (EACEA) as part of its Educa-
tion and Youth Policy Analysis ¹⁴, based on national data. As the starting dates varied between dif-
ferent European countries, and sometimes also between different levels of education, and different
81 regions of the same country, we considered the date when most of the schools started in a given
country.

The dependent variable was the raw count of new cases of COVID-19 detected each day. The num-
84 ber of days elapsing before or after schools reopened was considered as an independent variable. A
Joinpoint regression model with a Grid Search method was adapted to the data grouped by country,
based on the assumption of uncorrelated errors, in order to detect a single change point on the trend
87 of contagion. Then, whether the change point was statistically significant or not, two different re-
gression lines were estimated, both as follows:

$$\text{Number of daily cases} = \text{Intercept} + \text{Slope} \times \text{Days before or after schools reopened}$$

90 Then only the first line was retained for the whole observation period if the change point was not
statistically significant. The Bayesian Information Criterion (BIC) was used for model selection
purposes. All reported p-values are two-sided, with a significance threshold of $p < 0.05$. All statisti-
93 cal analyses were performed using the Joinpoint Regression Program in the SEER*Stat software,
version 4.8.0.1.

RESULTS

96 We performed 27 linear regression models for the daily numbers of SARS-CoV-2 infections recorded in the 27 European countries from 20 days before schools reopened to 45 days afterwards.

A significant increase in the number of daily infections was observed for 21 countries after a change
99 point in the linear regression lines, as shown in *Table 1*. The change points in the various countries ranged from 10 to 42 days after schools reopened, with the majority occurring after the 21st day.

In Hungary the trend appeared to slow beyond the change point. Only Estonia showed a decrease in
102 the trend of infections after schools reopened. The numbers of new cases detected each day in Germany, Spain, Sweden and Malta did not seem to increase after schools reopened (no change points were identified).

105 The slopes of the linear regression lines beyond the change points increased by less than 5 times for Austria and France, between 5 and 10 times for the Czech Republic, Portugal and Ireland, between 10 and 25 times for Luxembourg, Italy, Bulgaria, Belgium, Denmark, Finland, Slovakia, Greece,
108 the Netherlands and Romania, between 25 and 50 times for Lithuania, Poland, Latvia, Slovenia and Croatia, and over 50 times for Cyprus.

Figure 1 shows the changes in the slope for 8 European countries after schools reopened: Cyprus
111 (β_2/β_1 58.14); Slovenia (β_2/β_1 41.81); Poland (β_2/β_1 40.55); Croatia (β_2/β_1 34.97); Italy (β_2/β_1 22.22); Belgium (β_2/β_1 18.02); Hungary (β_2/β_1 0.43), the only country where the trend of the slope slackened off beyond the change point; and Estonia, the only country where the trend of the conta-
114 gion seemed to drop after schools reopened.

Table 1: Contagion trends in 27 European countries

Country	β_1 : First part of slope (p-value)	β_2 : Second part of slope (p-value)	Slope ratio ($ \beta_2/\beta_1 $)	Day of change in slope
Austria	13.74 (<0.001)	50.34 (<0.001)	3.66	29
Belgium	38.60	695.41	18.02	35

	(<0.001)	(<0.001)		
Bulgaria	10.38 (<0.001)	165.39 (<0.001)	15.93	33
Cyprus	0.21 (0.156)	12.21 (<0.001)	58.14	36
Croatia	-1.54 (0.296)	53.86 (<0.001)	34.97	29
Denmark	1.28 (0.273)	20.06 (<0.001)	15.67	24
Estonia	1.02 (<0.001)	-1.73 (0.019)	-	31
Finland	0.68 (<0.001)	7.99 (0.002)	11.75	37
France	214.31 (0.003)	946.07 (<0.001)	4.41	25
Germany	17.47 (<0.001)	No change point	-	-
Greece	4.55 (<0.001)	84.05 (<0.001)	18.47	35
Ireland	7.25 (<0.001)	48.76 (<0.001)	6.73	26
Italy	49.38 (<0.001)	1097.08 (<0.001)	22.22	27
Latvia	0.11 (0.569)	4.10 (<0.001)	37.27	20
Lithuania	0.15 (0.777)	3.82 (<0.001)	25.47	10
Luxembourg	2.34 (0.149)	52.94 (<0.001)	22.62	33
Netherlands	8.32 (<0.001)	106.83 (<0.001)	12.84	22
Poland	9.05 (0.048)	366.96 (<0.001)	40.55	30
Portugal	13.31 (<0.001)	115.69 (<0.001)	8.69	23
Czech Republic	56.12 (<0.001)	547.28 (<0.001)	9.75	34
Romania	8.80 (0.353)	106.80 (<0.001)	12.14	13
Slovakia	6.32 (0.018)	69.43 (<0.001)	10.99	27
Slovenia	4.44 (<0.001)	185.62 (<0.001)	41.81	42
Spain	95.41 (0.114)	No change point	-	-
Sweden	7.36	No change point	-	-

	(0.010)			
Hungary	24.77 (<0.001)	10.68 (0.006)	0.43	20
Malta	1.81 (<0.001)	No change point	-	-

117 A significant increase in the number of daily infections was observed for 21 countries, with the majority occurring after the 21st day.

120 **DISCUSSION**

This study analysed the trends of COVID-19 transmission before and after schools reopened in Europe. There was a significant increase in the number of new daily infections during the first 45 days
123 after school started for 21 of the 27 EU Member States. The trend of the contagion worsened in almost all European countries after a change point that occurred from 10 to 42 days after schools reopened. This finding indicates that caution is needed in assessing the cost-benefit balance when designing lockdown loosening policies. National school closures to stem the COVID-19 pandemic
126 had been implemented by 107 countries around the world by 18 March 2020, and in 192 countries by the end of April ^{2, 15}. The timing of their reopening has varied considerably across and within
129 countries, and for different levels of education ¹⁶.

A study analysing the relative rates of infection by age group identified higher rates among adolescents and young adults than among children during the first wave of the epidemic in Germany [RR
132 (age group): 0.78 (10-14); 1.14 (15-19); 1.40 (20-24); 1.06 (25-29)] ¹⁷. Another study conducted to identify sociodemographic factors behind the spread of COVID-19 found that provinces with lower aging indexes had higher rates of contagion, suggesting that younger people could be more responsible for spreading the virus at population level ¹⁸. Opposite findings emerged for Hungary, however: a recent publication showed that the trend of contagion slowed beyond the change point after
135 schools reopened. New cases of infection may have gone under-diagnosed, however, considering the high rate of positivity among the swabs obtained and the fact that Hungary had the lowest ratio
138 of swabs per 1000 population of all European countries during the period observed ¹⁹.

Our study revealed no change points after schools reopened for Germany, Malta, Sweden or Spain,
141 although the numbers of new infections were still growing in these countries. In Estonia the rate of infection even seems to have dropped after schools reopened. It is important to bear in mind, however, that we considered only a short-term follow-up (45 days), and it may be that rising case num-

144 bers do not become apparent for up to two months after relaxing such measures as school closures
20.

Our study has a major limitation that needs to be mentioned: we investigated changes in the slopes
147 of SARS-CoV-2 contagion after schools reopened, but this does not imply a causal inference. “Be-
fore and after” analyses typically suffer from several internal validity issues, one of which may con-
cern the effect of the passage of time: changes in an outcome measure might be due to some other
150 influential event(s) occurring in the meantime. In our scenario, for instance, the reopening of sports
facilities or seasonal temperature changes (which induce people to engage in different leisure activi-
ties) could have affected our outcome variable. In other words, the reopening of sports facilities,
153 greater access to leisure activities, and a more frequent use of public transport may have contributed
to the rise in disease transmission rates recorded after schools reopened ².

The management of school closures as a measure to contain the COVID-19 pandemic has repre-
156 sented a major challenge in European countries. Governments have faced a hard trade-off between
safeguarding the population’s health and assuring young people’s education. In many cases, the re-
opening of schools during the pandemic was hotly criticised by the public. However, one-hundred-
159 seven countries by March 18, 2020 and 192 countries by April, 2020 implemented national school
closures in response to the COVID-19 pandemic ^{2, 15}. The duration of school closures, and thus the
timing of re-opening, has been very heterogeneous across countries and among school degrees with-
162 in countries ¹⁶.

In conclusion, our results show that reopening schools correlated with a faster diffusion of SARS-
CoV-2 in most EU countries. That said, school closures and, more broadly, the suspension of face-
165 to-face education have negative consequences for students of various ages. As well as interfering
with their academic progress, they can give rise to higher dropout rates, higher economic costs for
families ²¹, and depression and anxiety in the young ²². This means that various decision-making

168 criteria and several different perspectives need to be taken into account when establishing policies relating to pandemic containment measures ²³.

171

REFERENCES

1. WHO. Coronavirus disease (COVID-19) Weekly Epidemiological Update and Weekly
174 Operational Update: <https://www.who.int/emergencies/diseases/novel-coronavirus-2019/situation-reports>. Accessed [18 February, 2021].
2. Pan A, Liu L, Wang C, et al. Association of public health interventions with the epidemiology of
177 the COVID-19 outbreak in Wuhan, China. JAMA. 2020 May 19;323(19):1915-1923. doi:
10.1001/jama.2020.6130.
3. Viner RM, Russell SJ, Croker H, et al. School closure and management practices during corona-
180 virus outbreaks including COVID-19: a rapid systematic review. Lancet Child Adolesc Health.
2020 May;4(5):397-404. doi: 10.1016/S2352-4642(20)30095-X.
4. Schwartz NG, Moorman AC, Makaretz A, et al. Adolescent with COVID-19 as the source of an
183 outbreak at a 3-week family gathering - four states, June–July 2020:
https://www.cdc.gov/mmwr/volumes/69/wr/mm6940e2.htm?s_cid=mm6940e2_w. Accessed [18
February, 2021].
- 186 5. Istituto Superiore di Sanità. School opening and trend of confirmed SARS-CoV-2 infections: the
situation in Italy. Version of December 30, 2020: [https://www.iss.it/rapporti-covid-19/-
189 /asset_publisher/btw1J82wtYzH/content/rapporto-iss-covid-19-n.-63-2020-apertura-delle-scuole-e-
andamento-dei-casi-confermati-di-sars-cov-2-la-situazione-in-italia.-versione-del-30-dicembre-
2020](https://www.iss.it/rapporti-covid-19/-/asset_publisher/btw1J82wtYzH/content/rapporto-iss-covid-19-n.-63-2020-apertura-delle-scuole-e-andamento-dei-casi-confermati-di-sars-cov-2-la-situazione-in-italia.-versione-del-30-dicembre-2020) . Accessed [18 February, 2021].
6. NBC News. 70 cases of COVID-19 at French schools days after reopening:
192 [https://www.nbcnews.com/health/health-news/70-cases-covid-19-french-schools-days-after-re-
opening-n1209591](https://www.nbcnews.com/health/health-news/70-cases-covid-19-french-schools-days-after-re-opening-n1209591) . Accessed [18 February, 2021].

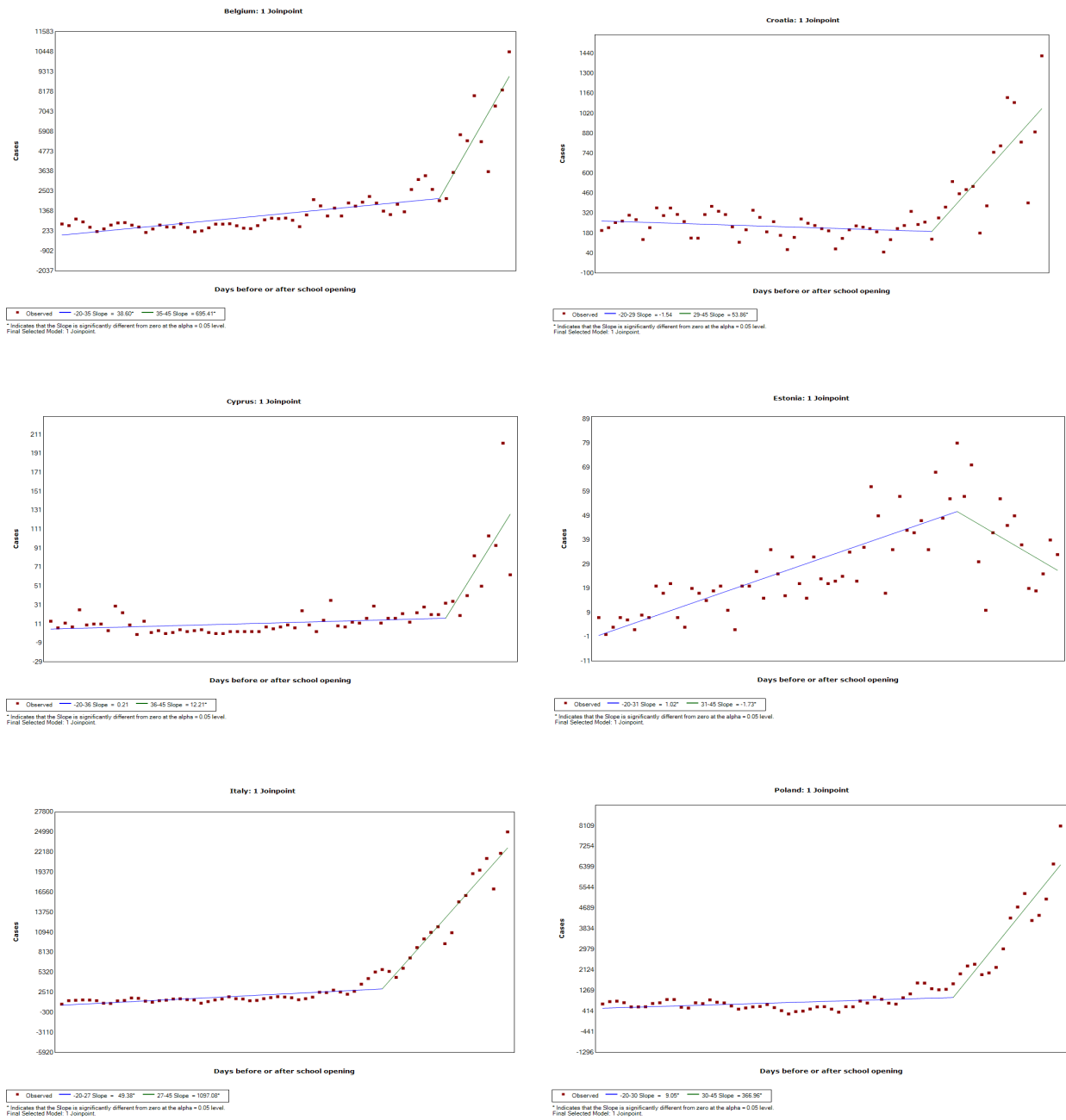
7. Stein-Zamir C, Abramson N, Shoob H, et al. A large COVID-19 outbreak in a high school 10 days after schools' reopening, Israel, May 2020. *Euro Surveill.* 2020;25(29):2001352. doi:10.2807/1560-7917.ES.2020.25.29.2001352
8. Otte Im Kampe E, Lehfeld AS, Buda S, Buchholz U, Haas W. Surveillance of COVID-19 school outbreaks, Germany, March to August 2020. *Euro Surveill.* 2020 Sep;25(38):2001645. doi: 10.2807/1560-7917.ES.2020.25.38.2001645.
9. European Centre for Disease Prevention and Control. Technical report: COVID-19 in children and the role of school settings in transmission first update: <https://www.ecdc.europa.eu/en/publications-data/children-and-school-settings-covid-19-transmission>. Accessed [18 February, 2021].
10. Buonsenso D, De Rose C, Moroni R, Valentini P. SARS-CoV-2 infections in Italian schools: preliminary findings after 1 month of school opening during the second wave of the pandemic. *Front Pediatr.* 2021 Jan 14;8:615894. doi: 10.3389/fped.2020.615894.
11. Edmunds WJ. Finding a path to reopen schools during the COVID-19 pandemic. *Lancet Child Adolesc Health.* 2020;4(11):796-797. doi:10.1016/S2352-4642(20)30249-2
12. Viner RM, Mytton OT, Bonell C, et al. Susceptibility to SARS-CoV-2 infection among children and adolescents compared with adults: a systematic review and meta-analysis. *JAMA Pediatr.* 2021 Feb 1;175(2):143-156. doi: 10.1001/jamapediatrics.2020.4573.
13. Roser M, Ritchie H, Ortiz-Ospina E, Joe Hasell J. Our World in Data - Coronavirus Pandemic (COVID-19): <https://ourworldindata.org/coronavirus> . Accessed [18 February, 2021].
14. European Commission/EACEA/Eurydice. The Organisation of School Time in Europe. Primary and General Secondary Education – 2020/21. Eurydice Facts and Figures. Luxembourg: Publications Office of the European Union. 2020: https://eacea.ec.europa.eu/national-policies/eurydice/content/organisation-school-time-europe-primary-and-general-secondary-education-202021_en Accessed [18 February, 2021].

- 219 15. Donohue JM, Miller E. COVID-19 and school closures. *JAMA*. 2020;324(9):845–847.
doi:10.1001/jama.2020.13092
16. OECD/European Union, Health at a Glance: Europe 2020: State of Health in the EU Cycle,
222 OECD Publishing, Paris, <https://doi.org/10.1787/82129230-en>.
17. Goldstein E, Lipsitch M. Temporal rise in the proportion of younger adults and older
adolescents among coronavirus disease (COVID-19) cases following the introduction of physical
225 distancing measures, Germany, March to April 2020 [published correction appears in Euro Surveill.
2020 May;25(18):]. *Euro Surveill*. 2020;25(17):2000596. doi:10.2807/1560-
7917.ES.2020.25.17.2000596
- 228 18. Buja A, Paganini M, Cocchio S, Scioni M, Rebba V, Baldo V. Demographic and socio-
economic factors, and healthcare resource indicators associated with the rapid spread of COVID-19
in Northern Italy: an ecological study. *PLoS One*. 2020;15(12):e0244535.
231 doi:10.1371/journal.pone.0244535
19. Roser M, Ritchie H, Ortiz-Ospina E, Joe Hasell J. Our World in Data - Coronavirus Pandemic
(COVID-19): [https://ourworldindata.org/coronavirus-data-
234 explorer?zoomToSelection=true&time=2020-08-12..2020-10-
15&country=~HUN®ion=World&positiveTestRate=true&interval=daily&hideControls=true&p
erCapita=true&smoothing=0&pickerMetric=location&pickerSort=asc](https://ourworldindata.org/coronavirus-data-explorer?zoomToSelection=true&time=2020-08-12..2020-10-15&country=~HUN®ion=World&positiveTestRate=true&interval=daily&hideControls=true&perCapita=true&smoothing=0&pickerMetric=location&pickerSort=asc). Accessed [18 February,
237 2021].
20. Scott N, Palmer A, Delport D, et al. Modelling the impact of relaxing COVID-19 control
measures during a period of low viral transmission. *Med J Aust*. 2021 Feb;214(2):79-83. doi:
240 10.5694/mja2.50845.
21. UNESCO. Adverse consequences of school closures:
<https://en.unesco.org/covid19/educationresponse/consequences>. Accessed [18 February, 2021].

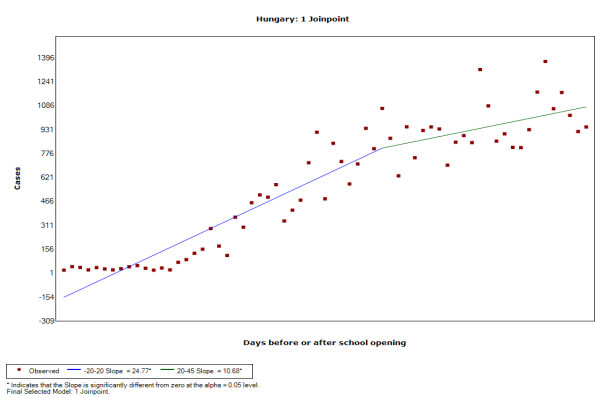
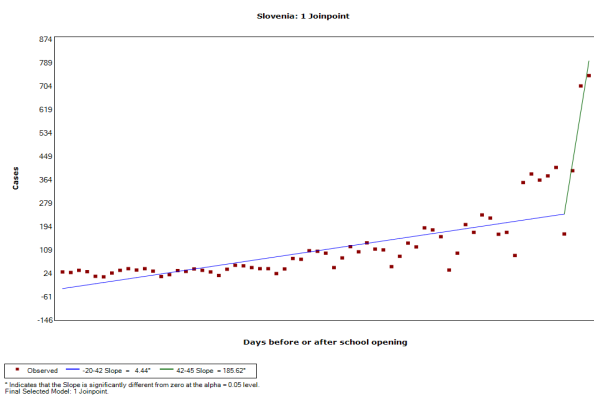
- 243 22. Courtney D, Watson P, Battaglia M, Mulsant BH, Szatmari P. COVID-19 impacts on child and
youth anxiety and depression: challenges and opportunities. *Can J Psychiatry*. 2020 Oct;65(10):688-
691. doi: 10.1177/0706743720935646.
- 246 23. Roope LSJ, Buckell J, Becker F, et al. How should a safe and effective COVID-19 vaccine be
allocated? Health economists need to be ready to take the baton. *Pharmacoeconomics - Open*. 2020
Dec;4(4):557-561. doi: 10.1007/s41669-020-00228-5.

249

Figure 1: Trend in numbers of new SARS-CoV-2 infections in selected countries over a period of 65 days (20 before and 45 after schools reopened)



255



258