

1 Running head: Long COVID-19 and cognition

2

3

4 **Long COVID neuropsychological deficits after severe, moderate or mild infection**

5

6 P. Voruz^{1,2,3}, G. Allali^{2,3}, L. Benzakour^{3,4}, A. Nuber-Champier¹, M. Thomasson^{1,2}, I. Jacot^{1,2},
7 J. Pierce¹, P. Lalive^{2,3}, K-O. Lövblad^{3,5}, O. Braillard⁶, M. Coen^{3,7}, J. Serratrice^{3,7}, J. Pugin^{3,8},
8 R. Ptak^{3,9}, I. Guessous^{3,6}, B.N. Landis^{3,10}, F. Assal^{2,3#} & J.A. Péron^{1,2#*}

9

10 # *These authors contributed equally to this work*

11

12 **Affiliations:**

13 ¹ Clinical and Experimental Neuropsychology Laboratory, Faculty of Psychology, University
14 of Geneva, Geneva, Switzerland

15 ² Neurology Department, Geneva University Hospitals, Switzerland

16 ³ Faculty of Medicine, University of Geneva, Switzerland

17 ⁴ Psychiatry Department, Geneva University Hospitals, Switzerland

18 ⁵ Diagnostic and Interventional Neuroradiology Department, Geneva University Hospitals,
19 Switzerland

20 ⁶ Division and Department of Primary Care, Geneva University Hospitals, Switzerland

21 ⁷ Internal Medicine Department, Geneva University Hospitals, Switzerland

22 ⁸ Intensive Care Department, Geneva University Hospitals, Switzerland

23 ⁹ Neurorehabilitation Department, Geneva University Hospital, Switzerland

24 ¹⁰ Rhinology-Olfactology Unit, Otorhinolaryngology Department, Geneva University
25 Hospitals, Switzerland

26

27 * *Corresponding author:*

28 Dre Julie Péron, Faculté de Psychologie et des Sciences de l'Éducation, 40 bd du Pont d'Arve,
29 1205 Geneva, Switzerland, Tel.: +41 22 379 94 55

30 julie.peron@unige.ch

31 **ABSTRACT**

32 **Background:** There is growing awareness that severe acute respiratory syndrome
33 coronavirus 2 (SARS-CoV-2) infection can include long-term neuropsychological deficits,
34 even in its mild or moderate respiratory forms.

35 **Methods:** Standardized neuropsychological, psychiatric, neurological and olfactory
36 tests were administered to 45 patients (categorized according to the severity of their
37 respiratory symptoms during the acute phase) 236.51 ± 22.54 days post-discharge following
38 SARS-CoV-2 infection.

39 **Results:** Deficits were found in all the domains of cognition and the prevalence of
40 psychiatric symptoms was also high in the three groups. The severe performed more poorly
41 on long-term episodic memory and exhibited greater anosognosia. The moderate had poorer
42 emotion recognition, which was positively correlated with persistent olfactory dysfunction.
43 The mild were more stressed, anxious and depressed.

44 **Conclusion:** The data support the hypothesis that the virus targets the central nervous
45 system (and notably the limbic system), and support the notion of different
46 neuropsychological phenotypes.

47

48 INTRODUCTION

49 The presence of long-term neuropsychological deficits following severe acute respiratory
50 syndrome coronavirus 2 (SARS-CoV-2) infection is strongly suspected, even in its mild or
51 moderate forms. This is based on four main arguments.

52 *First*, longitudinal studies of SARS-CoV and the Middle East respiratory syndrome,
53 which share many pathogenetic similarities with SARS-CoV-2, have demonstrated the
54 presence of sleep disorders, frequent recall of traumatic memories, emotional lability,
55 impaired concentration, fatigue, and impaired memory in more than 15% of affected patients
56 1 month to 3.5 years following infection (Rogers et al., 2020).

57 *Second*, neurological and cognitive symptoms observed in 38.6% of patients in the
58 acute phase (Mao et al., 2020) are hypothesized to have similar pathophysiological causes to
59 those responsible for short- and long-term cognitive impairment in other pathologies.
60 Neuropsychological studies among patients with neuro-immunological diseases such as HIV
61 (Wendelken & Valcour, 2012), multiple sclerosis (Piras et al., 2003), and encephalitis (van
62 Sonderen et al., 2016), have reported specific long-term deficits in cognitive functions (e.g.,
63 memory, executive or emotional processes) with a neuro-infectious and neuro-immunological
64 pathogenesis. Furthermore, increased prevalence of stroke has been reported in patients with
65 COVID-19 (Merkler et al., 2020; Nannoni, de Groot, Bell, & Markus, 2020), leading to
66 additional short- and long-term neurological and cognitive deficits, depending on the location
67 of the lesion, as described for example by Oxley et al. (2020), who examined five patients
68 aged under 50 years with large-vessel stroke.

69 *Third*, sudden-onset anosmia is a symptom that has been described extremely
70 frequently by patients following infection with SARS-CoV-2, regardless of the severity of
71 their respiratory symptoms (De Maria, Varese, Dentone, Barisione, & Bassetti, 2020; Lee &
72 Lee, 2020). Researchers have identified sustentacular cells as the potential entry point into the

73 olfactory epithelium (Brann et al., 2020). Unlike olfactory neurons, these cells carry ACE2
74 receptors (Fodoulian et al., 2020). However, the exact extent to which the olfactory
75 epithelium is affected is still unclear, so it is currently impossible to predict which patients
76 with COVID-19 will develop long-term olfactory disorders (Butowt & Bilinska, 2020). It is
77 not known if and how olfactory neurons are affected by disruption of sustentacular cell
78 function. It is also unclear whether the SARS-CoV-2 infection is confined solely to the
79 olfactory epithelium (Vaira et al., 2020), or whether it follows a neuroinvasive pathway via
80 the cribriform plate. Based on other neuro-olfactory pathologies, it has been suggested that
81 entry through the nose-brain barrier is likely and probably underestimated (Doty, 2008;
82 Landis, Vodicka, & Hummel, 2010). Some authors suggest that the olfactory bulb is damaged
83 following COVID-19 infection (Kandemirli, Altundag, Yildirim, Sanli, & Saatci, 2021;
84 Meinhardt et al., 2021). Interestingly, an ^{18}F -FDG PET study among patients with SARS-
85 CoV-2 and anosmia highlighted hypometabolism specifically in the neural substrates of the
86 olfactory circuit, which could indicate an attack on the central nervous system (CNS) (pre-
87 /postcentral gyrus, thalamus/hypothalamus, cerebellum and brainstem) via the olfactory
88 pathway (Guedj et al., 2021; Guedj et al., 2020).

89 *Fourth*, to our knowledge only one study has so far explored the short-term impact
90 (10-40 days post-hospital discharge) of SARS-CoV-2 infection on cognition using a validated
91 and standardized methodology with face-to-face interviews (Almeria, Cejudo, Sotoca, Deus,
92 & Krupinski, 2020). These authors reported short-term disruption of memory, attention, and
93 executive functions. Unfortunately, they did not explore the impact of the severity of the
94 respiratory symptoms. Hampshire et al. (2020) did consider the influence of severity in their
95 study, but only found a trend toward significance, and used online tests that had not been
96 psychometrically validated. Woo et al. (2020) also addressed the short-term (20-105 days
97 post-infection) impact of SARS-CoV-2 in mild or moderate patients, by administering the

98 Modified Telephone Interview for Cognitive Status, a screening battery that was initially
99 developed for the early detection of dementia. They reported memory and attentional deficits
100 in patients compared with matched controls. These approaches had several potential
101 methodological issues, such as the use of an online survey relying on participants' unverified
102 self-reports (Hampshire et al., 2020), and the failure to collect information about patients'
103 clinical history or medical antecedents (Almeria et al., 2020; Woo et al., 2020), which may
104 have induced interindividual variability in the results. Moreover, no study has investigated the
105 long-term effects of infection on the instrumental domains (including visuospatial processing,
106 ideomotor praxis, and language) or emotion recognition. Finally, to our knowledge, the
107 impact of psychiatric factors on the cognitive functioning of patients with SARS-CoV-2 has
108 not been studied thus far. Epidemiological studies have highlighted the impact of the
109 pandemic and related health measures such as lockdown on mental health (Bäuerle et al.,
110 2020; Röhr et al., 2020; Salari et al., 2020), with increased anxiety and depressive symptoms
111 (Wang et al., 2020) within the general population. Being infected by SARS-CoV-2 also has a
112 major affective impact (Almeria et al., 2020). Long-term psychiatric consequences of
113 COVID-19 described so far include anxiety, depressive symptoms, insomnia, and
114 posttraumatic stress disorder (PTSD) (Mazza et al., 2020), especially among patients with a
115 history of psychiatric illness or who required intensive care. All these symptoms may arise
116 from a neurobiological disturbance and the ensuing neuroinflammation process (Kohler,
117 Krogh, Mors, & Eriksen Benros, 2016).

118 In this context, the present study had three main objectives: i) investigate whether
119 SARS-COV-2 causes long-term (6-9 months after the acute phase) neuropsychological
120 deficits, identify the nature of the affected cognitive and psychiatric domains, and determine
121 their impact on quality of life; ii) explore whether cognitive and psychiatric symptoms are a
122 function of the severity of the respiratory symptoms in the acute phase, and whether patients

123 who present with moderate or even mild forms also exhibit cognitive dysfunctions and/or
124 psychiatric symptoms; and iii) look for correlations between long-term neuropsychological
125 deficits and psychiatric symptoms resulting from a neurobiological disturbance caused by
126 SARS-CoV-2 and/or personal stressful experience in the context of the global health crisis,
127 but also between these deficits and olfactory functions. To this end, patients underwent a
128 comprehensive neuropsychological assessment probing multiple cognitive domains, emotion
129 recognition, psychiatric symptoms, and olfaction. They were divided into three groups
130 according to the respiratory severity of the disease in the acute phase: severe (intensive care
131 with respiratory assistance), moderate (hospitalized without respiratory assistance), or mild
132 (not hospitalized).

133 Corresponding with our three objectives, we developed three hypotheses. First, we
134 hypothesized that SARS-CoV-2 causes long-term neuropsychological deficits that continue to
135 affect patients' functioning and quality of life 6-9 months post-infection. We expected to
136 observe cognitive deficits in memory, executive function and logical reasoning (Almeria et
137 al., 2020), as well as the emergence of psychiatric disorders such as anxiety, depressive
138 symptoms, insomnia, and PTSD (Troyer, Kohn, & Hong, 2020; Varatharaj et al., 2020).
139 Second, we hypothesized that the presence of neuropsychological deficits is positively
140 correlated with disease severity in the acute phase (Hampshire et al., 2020). Third, although
141 ours was an exploratory study, we hypothesized that pandemic- and disease-related
142 psychiatric symptoms explain a significant proportion (but not all) of the variance observed
143 for neuropsychological measures (Baig, Khaleeq, Ali, & Syeda, 2020). Based on Soudry,
144 Lemogne, Malinvaud, Consoli, and Bonfils (2011) and Guedj et al. (2021), we also predicted
145 that a long-term reduction in olfactory performance would correlate positively with any
146 impaired performance on memory and emotion recognition, owing to common neuronal
147 substrates.

148 **METHODS**

149 **Participants (see Table 1)**

150 Three groups of patients who had been infected with SARS-CoV-2 were included in the
151 study: 15 patients who had been admitted to intensive care during the acute phase of the
152 infection (severe); 15 patients who had been hospitalized but did not require intensive care
153 (moderate); and 15 patients who had tested positive but had not been hospitalized. All the
154 patients had had their infection confirmed by positive polymerase chain reaction (PCR) from
155 nasopharyngeal swab and/or positive serology. On average, the moderate patients had been
156 hospitalized for 9.27 days (\pm 9.52), and the severe patients for 37.40 days (\pm 30.50). In
157 comparison with other studies on SARS-CoV-2, the mean duration of hospitalization for the
158 moderate group was somewhat longer, but this was driven by a single patient. The median
159 number of days for this group was 7, which is comparable to that observed in other studies in
160 Switzerland (Regina et al., 2020).

161 The required number of participants in each group was determined by a power
162 analysis involving the comparison of two means: $N = \frac{2 \times \sigma^2 (z_{\alpha} + z_{\beta})}{(\bar{X}_1 - \bar{X}_2)^2}$. This analysis was based
163 on the literature evaluating the short-term neuropsychological effects of SARS-CoV-2 on
164 mild patients (Woo et al., 2020). To achieve the desired statistical power ($1 - \beta$) of 90% and
165 risk of Type I error (α) of 0.05, results indicated that for a one-sided hypothesis, 13
166 participants were needed in each group. As we planned to perform nonparametric analyses,
167 we had to increase the sample size by 15% (Lehmann, 2012), resulting in 15 participants per
168 group.

169 The three groups were matched for median age (mild = 57 years; moderate = 55 years;
170 severe = 59 years), sociocultural level, and clinical variables. Given the risk factors associated
171 with the severe form of SARS-CoV-2, there were significantly higher proportions of men

172 (severe = 86.66%; moderate = 40%; mild = 46.66%) and patients with diabetes. Participants
173 were recruited via admission lists provided by the treating doctors at Geneva University
174 Hospitals: LB and OB. For each patient, we carried out a medical file review, followed by a
175 telephone call inviting the patient to take part in the study, if all the eligibility criteria were
176 met. Exclusion criteria were a history of neurological issues, psychiatric disorders (two of the
177 included participants had had an episode of depression more than 10 years before their SARS-
178 CoV-2 infection), cancer (to exclude possible chemotherapy- and radiotherapy-related
179 cognitive impairment (Cascella et al., 2018)), neuro-developmental pathologies, pregnancy,
180 and age above 80 years.

181 **Table 1: Sociodemographic data and relevant medical antecedents**

182

	Mild <i>n</i> = 15	Moderate <i>n</i> = 15	Severe <i>n</i> = 15	<i>p</i> value
Age in years (mean ± <i>SD</i>)	53.33 (± 8.93)	55.87 (± 11.45)	61.80 (± 10.42)	<i>ns</i>
Education level in years (mean ± <i>SD</i>)	2.67 (± 0.49)	2.53 (± 0.74)	2.40 (± 0.63)	<i>ns</i>
Gender (F/M)	8/7	9/6	2/13	.021
Days of hospitalization (mean ± <i>SD</i>)	-	9.27 (± 9.52)	37.40 (± 30.50)	-
Diabetes	0/15	2/15	5/15	.041
Smoking	2/15	0/15	1/15	.351
History of respiratory disorders	3/15	3/15	5/15	.625
History of cardiovascular disorders	3/15	2/15	4/15	.605
History of neurological disorders	0/15	0/15	0/15	1
History of psychiatric disorders	1/15	0/15	1/15	.351
History of cancer	0/15	0/15	0/15	1
History of severe immunosuppression	0/15	0/15	0/15	1
History of developmental disorders	0/15	0/15	0/15	1
Chronic renal failure	0/15	0/15	2/15	.129
Sleep apnea syndrome	1/15	1/15	3/15	.071

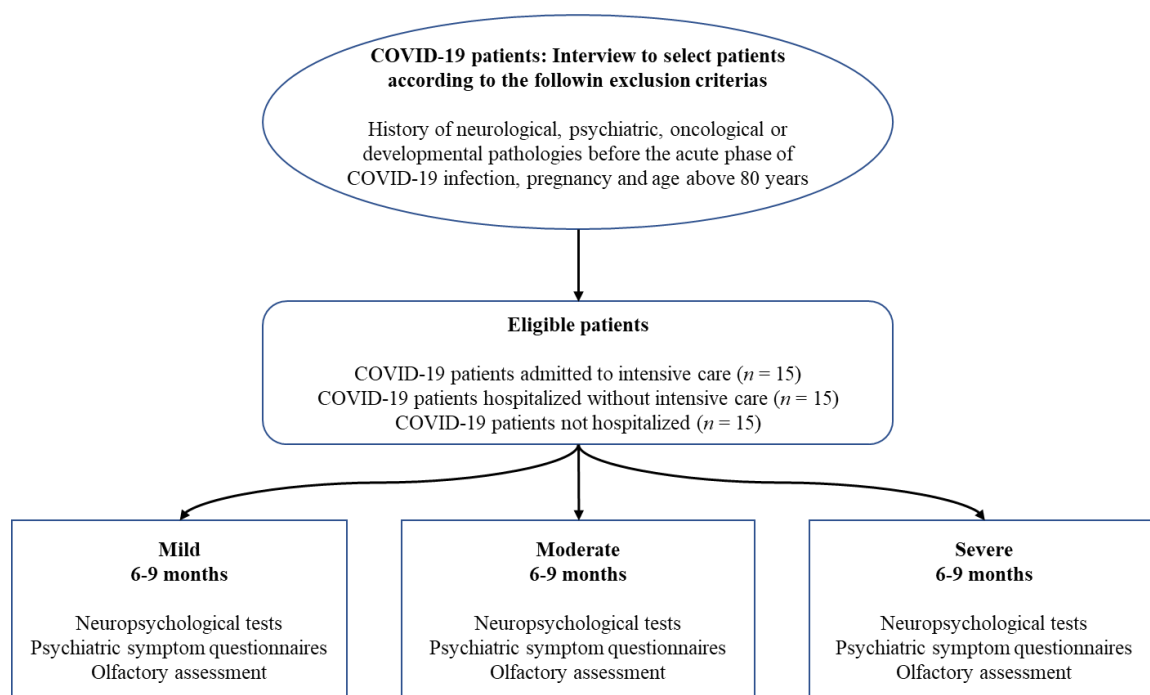
183

184 *Note.* F: female; M: male; *ns*: not significant; *SD*: standard deviation.

185 **General procedure and ethics**

186 A flowchart displaying the successive stages of the study according to the eligibility criteria
187 for each experimental group is provided in Figure 1.

188 After being given a complete description of the study, participants provided their
189 written informed consent. The study was conducted in accordance with the Declaration of
190 Helsinki, and the study protocol was approved by the cantonal ethics committee of Geneva
191 (CER-02186).



192

193

Figure 1: Flowchart of the study

194

195 **Neuropsychological assessment**

196 A comprehensive neuropsychological battery was administered to participants 6-9 months
197 after their positive PCR test (236.51 ± 22.54 days). This battery included a series of tests and
198 questionnaires assessing most of the domains of cognition, emotion recognition, fatigue, and
199 quality of life (see below). The tests were administered by clinical psychologists (mean

200 duration: approx. 180 minutes), and the questionnaires were administered online via Qualtrics
201 software (Qualtrics, Provo, UT) (mean duration: approx. 60 minutes).

202 *Executive functions.* Several tasks were administered to evaluate three executive
203 functions (i.e., inhibition, shifting and updating), in accordance with Miyake et al. (2000):
204 Stroop task, Trail Making Test, and categorical and lexical verbal fluency from the GREFEX
205 battery (Roussel & Godefroy, 2008). Verbal and visuospatial working memory were assessed
206 using the backward digit span (Drozdick, Raiford, Wahlstrom, & Weiss, 2018) and backward
207 Corsi test (Kessels, Van Zandvoort, Postma, Kappelle, & De Haan, 2000). We also
208 administered computer-based tasks designed to gauge focused attention, divided attention,
209 phasic alertness, working memory, and incompatibility using version 2.1 of the Test for
210 Attentional Performance (TAP) (Zimmermann & Fimm, 2007).

211 *Memory systems.* The short-term memory system was assessed with forward digit
212 spans (Drozdick et al., 2018) and the Corsi test (Kessels et al., 2000). Verbal episodic
213 memory was assessed with the 16-item Grober and Buschke free/cued recall (RL/RI 16)
214 paradigm (Grober & Buschke, 1987), as it distinguishes between the cognitive subprocesses
215 of encoding, storage, and recall (Van der Linden et al., 2004). Visual episodic memory was
216 assessed with the delayed recall of the Rey-Osterrieth Complex Figure test (Meyers &
217 Meyers, 1995).

218 *Instrumental function.* Language was assessed with the BECLA battery (Macoir,
219 Gauthier, Jean, & Potvin, 2016), ideomotor praxis with a short validated battery (Mahieux-
220 Laurent et al., 2009), visuoconstructive abilities with the Rey-Osterrieth Complex Figure test
221 (Meyers & Meyers, 1995), and visuoperceptual functions with 4 subtests from the Visual
222 Object and Space Perception battery (VOSP) (Warrington & James, 1991) measuring object
223 perception (fragmented letters, object decision) and spatial perception (localization of
224 numbers, analysis of cubes).

225 *Logical reasoning.* This was assessed using the Puzzle and Matrices subtests of the
226 Wechsler Adult Intelligence Scale–Fourth Edition (WAIS-4) (Wechsler, 2008).

227 *Emotion.* Multimodal emotion recognition was assessed with the Geneva Emotion
228 Recognition Test (GERT) (Schlegel, Grandjean, & Scherer, 2014). In this emotion
229 recognition task, participants watched 42 video clips, in which 10 actors displayed 14
230 different emotions (pride, fun, joy, pleasure, relief, interest, anger, irritation, fear, anxiety,
231 disgust, despair, sadness, surprise) while expressing nonverbal content. After each clip,
232 participants were asked to choose one emotion from the list of 14 that best described the
233 emotion played by the actor.

234 *Anosognosia and cognitive complaints.* We administered the Cognitive Complaints
235 Questionnaire (QPC) (Thomas-Antérion, Ribas, Honoré-Masson, Million, & Laurent, 2004)
236 and the Behavior Rating Inventory of Executive Function-adult Version (BRIEF-A) (Roth,
237 Gioia, & Isquith, 2005). To quantify anosognosia, we calculated a self-appraisal discrepancy
238 (SAD) score for each memory and executive domain evaluated by the QPC and BRIEF-A
239 (Leicht, Berwig, & Gertz, 2010; Rosen et al., 2010; Tondelli et al., 2018). First, we calculated
240 standardized scores for the cognitive complaints, dividing the raw scores of the self-report
241 questionnaires into four categories: 0 = normal behavior; 1 = limited influence on daily life; 2
242 = noticeable influence on daily life; and 3 = substantial influence on daily life. Then, each
243 standardized score yielded by one of these self-administered questionnaires of cognitive
244 complaints was subtracted from the standardized score for the relevant function. For example,
245 if a patient reported no memory disorders (QPC score = 3) but performed very poorly on
246 Grober and Buschke (RL/RI 16) – delayed free recall (score = 0), he/she would exhibit
247 anosognosia for memory dysfunction: 0 (standardized score on episodic memory test) – 3
248 (score on self-questionnaire of memory complaints) = -3. SAD scores could therefore range
249 from -3 to 3, and any score below 0 indicated anosognosia.

250 **Other clinical outcomes**

251 We collected patients' sociodemographic data and medical history. Psychiatric data (including
252 those concerning current fatigue, insomnia, and somnolence), olfactory abilities, and quality
253 of life at the time of the interview were also collected. Finally, a neurological assessment of
254 CNS and peripheral nervous system functions and walking was carried out by two certified
255 neurologists (FA and GA).

256 *Sociodemographic and clinical data.* In addition to age, collected during the inclusion
257 interview, we recorded patients' gender, handedness, and education level. To complement
258 information about previous neurological, psychiatric, and developmental conditions and
259 cancer collected during the inclusion interview, we asked patients about previous
260 cardiovascular disease, respiratory disorders, immunosuppression status, sleep apnea
261 syndrome, diabetes, and smoking. Participants were asked to describe the symptoms they had
262 experienced both during the acute phase of infection and currently (6-9 months post-
263 infection), and the number of days they had spent in hospital, where relevant.

264 *Psychiatric data.* Depression was assessed with the Beck Depression Inventory-
265 Second edition (BDI-II) (Beck, Steer, & Brown, 1996), anxiety with the State-Trait Anxiety
266 Inventory (STAI-S and STAI-T) (Spielberger, Gorsuch, Lushene, Vagg, & Jacobs, 1993),
267 apathy and its distinct subtypes with the Apathy Motivation Index (AMI) (Ang, Lockwood,
268 Apps, Muhammed, & Husain, 2017), PTSD with the Posttraumatic Stress Disorder Checklist
269 for DSM-5 (PCL-5) (Ashbaugh, Houle-Johnson, Herbert, El-Hage, & Brunet, 2016), manic
270 symptoms with the Goldberg Mania Inventory (Goldberg, 1993), dissociative symptoms in
271 the patient's daily life with the Dissociative Experience Scale (DES) (Carlson & Putnam,
272 1986), current stress perception with the Perceived Stress Scale – 14 items (PSS-14) (Lesage,
273 Berjot, & Deschamps, 2012), cognitive reappraisal of an emotional episode and expressive
274 emotional suppression capacities with the Emotion Regulation Questionnaire (ERQ) (Gross &

275 John, 2003) and susceptibility to others' emotions with the Emotion Contagion Scale (ECS)
276 (Doherty, 1997). Finally, fatigue was assessed with the French version of the Fatigue Impact
277 Scale (Debouverie, Pittion-Vouyovitch, Louis, & Guillemin, 2007), potential sleeping
278 disorders with the Insomnia Severity Index (ISI) (Morin, 1993), and symptoms of sleepiness
279 in daily life with the Epworth Sleepiness Scale (Johns, 1991).

280 *Olfaction.* Olfactory performance was measured with the Sniffin' Sticks test battery.
281 This test consists of commercially available pens with 16 common odors, which were each
282 presented for 2 s in front of both nostrils. For each odor, patients had to choose between four
283 descriptors in a multiple-choice task. Participants' scores ranged from 0 to 16. Based on
284 Kobal et al. (2000), we set three thresholds. Patients with an identification score of 0-7 were
285 considered anosmic, 8-12 hyposmic, and 12-16 normosmic.

286 *Quality of life.* We administered the SF-36 (Bousquet et al., 1994), which distinguishes
287 between the physical and mental aspects of quality of life.

288

289 **Statistical analyses**

290 *Prevalence of neuropsychological deficits and psychiatric symptoms (Objective 1)*

291 For each neuropsychological test, we first compared patients' performances with normative
292 data for the validated neuropsychological tools. As the standardization depended upon the
293 distribution of the normative data collected from the reference sample (t and z scores,
294 percentiles, or standard scores), the comparative tests were adjusted according to the
295 guidelines provided by the authors of the validation study for each test. Second, the data were
296 normalized according to the guidelines of the Swiss Association of Neuropsychology (Frei et
297 al., 2016; Heaton, Grant, & Matthews, 1991), making it possible to classify the standardized
298 as follows: far below the norm ($< 2^{\text{nd}}$ percentile), substandard (2^{nd} - 5^{th} percentiles), borderline
299 or below the normal limit (6^{th} - 15^{th} percentiles), normal ($\geq 16^{\text{th}}$ percentile). This
300 standardization allowed us to quantify the prevalence of each type of disorder, while
301 controlling for variables such as age, education level, and gender. To consider the possible
302 effect of fatigue and increase the robustness of the results, only those performances that were
303 far below the norm ($< 2^{\text{nd}}$ percentile) or substandard (2^{nd} - 5^{th} percentile) were used to calculate
304 the prevalence of neuropsychological deficits. Results that were just below the norm were
305 therefore not considered in the prevalence table.

306

307 *Neuropsychological deficits as a function of disease severity (Objective 2)*

308 For each neuropsychological, psychiatric or quality-of-life measure, we compared the three
309 groups (severe, moderate, and mild) on the raw data. Given the distribution of the samples, we
310 used nonparametric Kruskal-Wallis tests. For significant ($p < .05$) measures, Mann-Whitney
311 tests were performed for the 2 x 2 comparisons with Bonferroni-corrected p values.

312

313 *Relationships between neuropsychological deficits, psychiatric symptoms, and other*
314 *secondary variables (Objective 3)*

315 For each neuropsychological variable of interest, forward stepwise multiple regression
316 analyses were performed on the raw cognitive data with the significant sociodemographic
317 variables, sniff test results and psychiatric measures, to quantify relationships between these
318 variables and the neuropsychological functions.

319 In parallel, and in order to elucidate the cognitive data's underlying structure, we
320 performed a principal component analysis (PCA) on the raw test and questionnaire scores
321 assessing cognition and emotion recognition. The list of variables included in the PCA is
322 available in Supplementary Information 1. We extracted the first three components with the
323 highest eigenvalues. We then reran forward stepwise multiple regressions for each cognitive
324 component, with the same variables of interest as those described above.

325

326 **RESULTS**

327 **Neuropsychological, psychiatric and olfactory profiles 6-9 months post-** 328 **infection**

329 The first aim of this study was to assess the prevalence of neuropsychological impairments
330 and psychiatric symptoms 6-9 months after SARS-CoV-2 infection. We compared patients'
331 performances with available normative data to identify the number of impaired scores per
332 patient, group, and test. The prevalence of cognitive impairments in each group $236.51 \pm$
333 22.54 days after infection is set out in Table 2, and the prevalence of psychiatric symptoms in
334 Table 3

335 *Cognition.* Cognitive deficits common to all three groups were observed in the
336 following domains: long-term episodic memory in both the verbal and visual modalities,
337 executive functions (e.g., inhibition and mental flexibility, and both categorical and literal
338 verbal fluency), sustained and divided attention, and language (semantic matching and
339 naming). All three groups exhibited anosognosia for executive dysfunction (see Table 2)

340 *Psychiatric disorders.* All three groups displayed anxiety, mania, the social component
341 of apathy, stress, PTSD, and dissociative disorders. All three groups also reported insomnia,
342 fatigue and pathological somnolence (see Table 3). The only psychiatric variable where the
343 prevalence score stood out for severe patients was emotional apathy, as measured with AMI
344 (see Table 3).

345 *Olfaction.* 33.33% of the mild group, 73.33% of the moderate group, and 46.66% of
346 the severe group displayed hyposmia. There was no anosmia in the mild and moderate groups,
347 but 13.33% of the severe group were anosmic (see Table 3).

Table 2: Cognitive deficits among patients with mild, moderate or severe COVID-19 6-9 months post-infection

		Mild (n = 15)	Moderate (n = 15)	Severe (n = 15)	p value
		Prevalence (%)	Prevalence (%)	Prevalence (%)	
Memory					
Verbal episodic memory	Grober & Buschke (RL/RI 16) - Immediate recall	0.00	0.00	6.67	.066
	Grober & Buschke (RL/RI 16) – Sum of 3 free recalls	0.00	0.00	0.00	.110
	Grober & Buschke (RL/RI 16) – Sum of 3 total recalls	0.00	13.33	6.67	.229
	Grober & Buschke (RL/RI 16) - Delayed free recall	0.00	6.67	6.67	.005
	Grober & Buschke (RL/RI 16) - Delayed total recall	6.67	13.33	20.00	.450
Visuospatial episodic memory	Rey Figure - Copy time	0.00	0.00	0.00	.459
	Rey Figure - Score	6.67	20.00	6.67	.904
	Rey Figure - Immediate recall (3')	0.00	26.67	0.00	.117
	Rey Figure - Delayed recall (20')	0.00	13.33	0.00	.046
Verbal short-term memory	MEM III -Spans	0.00	6.67	6.67	.351
Visuospatial short-term memory	WAIS IV - Spans	0.00	0.00	0.00	.424
Executive functions					
Inhibition	Stroop (GREFEX) - Interference - Time	26.67	0.00	13.33	.112

	Stroop (GREFEX)- Interference - Errors	6.67	28.57	13.33	.312
	Stroop (GREFEX)- Interference/Naming - Score	13.33	7.14	13.33	.170
Working memory	MEM III – Verbal working memory	6.67	0.00	0.00	.273
	WAIS IV - Visuospatial working memory	6.67	6.67	0.00	.736
	TAP - Working memory item omissions	0.00	0.00	7.14	.664
	TAP - Working memory false alarms	0.00	6.67	14.29	.886
Mental flexibility	TMT A (GREFEX) - Time	0.00	0.00	0.00	.396
	TMT A (GREFEX) - Error	0.00	6.67	13.33	.343
	TMT B (GREFEX) - Time	0.00	13.33	6.67	.093
	TMT B (GREFEX) - Error	6.67	13.33	20.00	.543
	TMT B (GREFEX) - Perseverations	13.33	33.33	20.00	.140
	TMT B-A (GREFEX) - Score	0.00	20.00	6.67	.084
	Verbal fluency (GREFEX) - Literal (2')	6.67	13.33	6.67	.201
	Verbal fluency (GREFEX) - Categorical (2')	13.33	20.00	26.67	.246
Incompatibility	TAP - Compatibility – Reaction time	0.00	0.00	0.00	.834
	TAP - Compatibility - False alarms	0.00	20.00	13.33	.475
	TAP - Incompatibility - Reaction time	0.00	0.00	0.00	.548
	TAP - Incompatibility - False alarms	0.00	20.00	13.33	.528

Interhemispheric transfer	TAP - Incompatibility - Visual field score	13.33	6.67	13.33	.402
	TAP - Incompatibility task - Hands score	6.67	6.67	0.00	.631
Attentional functions					
Phasic alertness	TAP - Without warning sound - Reaction time	13.33	0.00	6.67	.869
	TAP - Without warning sound - <i>SD</i> of reaction time	13.33	0.00	0.00	.597
	TAP - With warning sound - Reaction time	13.33	0.00	0.00	.604
	TAP - With warning sound - <i>SD</i> of reaction time	6.67	0.00	0.00	.256
	TAP - Alertness index	6.67	6.67	0.00	.426
Sustained attention	TAP - Item omissions	13.33	30.77	7.69	.657
	TAP - False alarm	6.67	23.08	7.69	.101
Divided attention	TAP - Audio condition - Reaction time	20.00	13.33	13.33	.242
	TAP - Visual condition - Reaction time	6.67	0.00	0.00	.999
	TAP - Total omissions	6.67	13.33	0.00	.748
	TAP - Total false alarms	0.00	0.00	20.00	.101
Instrumental functions					
Language	BECLA - Semantic image matching	6.67	6.67	13.33	.409
	BECLA - Semantic word matching	6.67	13.33	6.67	.937
	BECLA - Object and action image naming	6.67	6.67	6.67	.879

	BECLA - Word repetition	0.00	0.00	0.00	.369
	BECLA - Nonword repetition	0.00	0.00	6.67	.191
Ideomotor praxis	Evaluation of ideomotor praxis - Symbolic gestures	0.00	0.00	0.00	.057
	Evaluation of ideomotor praxis - Action pantomimes	0.00	0.00	0.00	.222
	Evaluation of ideomotor praxis - Meaningless gestures	13.33	0.00	6.67	.902
Object perception	VOSP - Fragmented letters	0.00	6.67	0.00	.690
	VOSP - Object decision	20.00	33.33	0.00	.229
Spatial perception	VOSP - Number localization	0.00	20.00	6.67	.932
	VOSP - Cubic counting	0.00	6.67	0.00	.772
Logical reasoning	WAIS IV - Puzzle	6.67	6.67	0.00	.299
	WAIS IV - Matrix	0.00	13.33	0.00	.223
Anosognosia	Memory functions	0.00	40.00	40.00	.020
	Executive functions - Inhibition	20.00	26.67	53.33	.508
	Executive functions - Flexibility	20.00	33.33	33.33	.503
	Executive functions - Working memory	6.67	6.67	0.00	.390
Cognitive complaints	QPC	6.67	13.33	0	.041
	Executive complaints (BRIEF-5) (mean \pm <i>SD</i>)	112.47 (\pm 13.25)	113.20 (\pm 20.96)	99.60 (\pm 20.06)	.153
Emotion recognition	GERT – Emotion recognition task (mean \pm <i>SD</i>)	26.53 (\pm 5.14)	20.33 (\pm 6.17)	21.6 (\pm 7.23)	.023

1 **Note.** Prevalence was calculated according to normative scores, ranging from much lower than the norm (below 2nd percentile) to
2 substandard (between 2nd and 5th percentiles). Scores that were borderline or below the normal limit (between 6th and 15th percentiles) were not
3 included.

4 **Abbreviations:** BECLA: Batterie d'évaluation cognitive du langage (Macoir et al., 2016); GERT: Geneva Emotion Recognition Test
5 (Schlegel et al., 2014); GREFEX: Groupe de Réflexion sur l'Evaluation des Fonctions Exécutives (Roussel & Godefroy, 2008); MEM III:
6 Wechsler Memory Scale – Third Edition (Drozdick et al., 2018); QPC: Cognitive Complaint Questionnaire (Thomas-Antérion et al., 2004); Rey
7 figure: Rey-Osterrieth Complex Figure test (Meyers & Meyers, 1995); RL/RI-16: free/cued recall 16 items (Grober & Buschke, 1987); *SD*:
8 standard deviation; TAP: Test for Attentional Performance (TAP), Version 2.1 (Zimmermann & Fimm, 2007); TMT: Trail Making Test; VOSP:
9 Visual Object and Space Perception battery (Warrington & James, 1991); WAIS IV: Wechsler Adult Intelligence Scale–Fourth Edition
10 (Wechsler, 2008).

11 **Table 3: Psychiatric symptoms and olfaction in patients with mild, moderate or severe COVID-19 6-9 months post-infection**

12

Psychiatric symptoms	Mild (<i>n</i> = 15)	Moderate (<i>n</i> = 15)	Severe (<i>n</i> = 15)	<i>p</i> value
Depression (BDI-II) (prevalence)	Minor = 46.67%	Minor = 66.67%	Minor = 80%	.009
	Mild = 20%	Mild = 20%	Mild = 20%	
	Moderate = 33.33%	Moderate = 13.33%	Moderate = 0%	
	Severe = 0%	Severe = 0%	Severe = 0%	
State anxiety (STAI-state) (prevalence)	Very low = 26.67%	Very low = 60%	Very low = 86.67%	.002
	Low = 33.33%	Low = 6.67%	Low = 6.67%	
	Moderate = 13.33%	Moderate = 20%	Moderate = 6.67%	
	High = 26.67%	High = 13.33%	High = 0%	
	Very high = 0%	Very high = 0%	Very high = 0%	
Trait anxiety (STAI-trait) (prevalence)	Very low = 46.67%	Very low = 73.33%	Very low = 60%	.100
	Low = 26.67%	Low = 0%	Low = 33.33%	
	Moderate = 13.33%	Moderate = 20%	Moderate = 6.67%	
	High = 13.33%	High = 6.67%	High = 0%	
	Very high = 0%	Very high = 0%	Very high = 0%	

Mania (Goldberg Inventory) (prevalence)	Probably absent = 26.67% Hypomania = 26.67% Close to mania = 20% Moderate = 26.67% Ordinary to severe = 0% Severe = 0	Probably absent = 13.33% Hypomania = 26.67% Close to mania = 20% Moderate = 40% Ordinary to severe = 0% Severe = 0	Probably absent = 20% Hypomania = 46.67% Close to mania = 6.67% Moderate = 26.67% Ordinary to severe = 0% Severe = 0	.909
Apathy (AMI-total) (prevalence)	Absent = 86.67% Moderate = 13.33% High = 0%	Absent = 93.33% Moderate = 6.67% High = 0%	Absent = 73.33% Moderate = 26.67% High = 0%	.602
Behavioral apathy (AMI-behavioral) (prevalence)	Absent = 100% Moderate = 0% High = 0%	Absent = 100% Moderate = 0% High = 0%	Absent = 93.33% Moderate = 6.67% High = 0%	.211
Social apathy (AMI-social) (prevalence)	Absent = 93.33% Moderate = 6.67% High = 0%	Absent = 86.67% Moderate = 6.67% High = 6.67%	Absent = 73.33% Moderate = 26.67% High = 0%	.940
Emotional apathy (AMI-emotional) (prevalence)	Absent = 73.33% Moderate = 26.67% High = 0%	Absent = 60% Moderate = 40% High = 0%	Absent = 40% Moderate = 33.33% High = 26.67%	.029

Posttraumatic stress disorder (PCL-5) (prevalence)	Absent = 86.67% Present = 13.33%	Absent = 86.67% Present = 13.33%	Absent = 93.33% Present = 6.67%	.054
Stress (PSS-14) Mean (\pm <i>SD</i>)	26.13 (\pm 9.53)	19.6 (\pm 7.47)	14.93 (\pm 9.42)	.023
Dissociative disorder (DES) Mean (\pm <i>SD</i>)	7.68 (\pm 11.89)	10.45 (\pm 9.23)	3.98 (\pm 3.03)	.140
Emotional contagion (ECS) Mean (\pm <i>SD</i>)	41.40 (\pm 7.20)	44.6 (\pm 4.22)	36.13 (\pm 8.38)	.002
Emotional regulation (ERQ) Mean (\pm <i>SD</i>)	41.6 (\pm 7.39)	44.2 (\pm 8.33)	39.80 (\pm 11.77)	.416
Somnolence (Epworth) (prevalence)	Pathological = 40.00%	Pathological = 53.33%	Pathological = 26.67%	.036
Insomnia (ISI) (prevalence)	Absent = 20% Mild = 40% Moderate = 40% Severe = 0%	Absent = 46.67% Mild = 40% Moderate = 13.33% Severe = 0%	Absent = 60% Mild = 26.67% Moderate = 13.33% Severe = 0%	.040

Fatigue (EMIF-SEP) (prevalence)	Present = 13.33%	Present = 20%	Present = 6.67%	.088
Sniff test (anosmia) Mean (\pm <i>SD</i>)	13.07 (\pm 1.44)	11.53 (\pm 2.13)	11.47 (\pm 2.90)	.067

13 **Abbreviations:** AMI-behavioral: Apathy Motivation Index – behavioral score (Ang et al., 2017); AMI-emotional: Apathy Motivation
14 Index – emotional score (Ang et al., 2017); AMI-social: Apathy Motivation Index – social score (Ang et al., 2017); AMI-total: Apathy
15 Motivation Index – total score (Ang et al., 2017); BDI-II: Beck Depression Inventory-Second edition (Beck et al., 1996); DES: Dissociative
16 Experience Scale (Carlson & Putnam, 1986); ECS: Emotion Contagion Scale (Doherty, 1997); EMIF-SEP: Fatigue Impact Scale, French
17 adaptation (Debouverie et al., 2007); ERQ: Emotion Regulation Questionnaire (Gross & John, 2003); Epworth: Epworth Sleepiness Scale (Johns,
18 1991); Goldberg Inventory: Goldberg Mania Inventory (Goldberg, 1993); ISI: Insomnia Severity Index (Morin, 1993); PCL-5: Posttraumatic
19 Stress Disorder Checklist for DSM-5 (Ashbaugh et al., 2016); PSS-14: Perceived Stress Scale – 14 items (Lesage et al., 2012); STAI-trait: State-
20 Trait Anxiety Inventory (Spielberger et al., 1993); STAI-state: State-Trait Anxiety Inventory (Spielberger et al., 1993).

21 **Neuropsychological and psychiatric symptoms as a function of disease** 22 **severity**

23 The second aim was to determine whether cognitive deficits and psychiatric symptoms are a
24 function of the severity of the respiratory symptoms in the acute phase. To this end, we
25 compared the three groups on neuropsychological, psychiatric and other clinical data
26 (Kruskal-Wallis statistics and p values reported in Tables 2, 3 and 4; Bonferroni-corrected
27 Mann-Whitney statistics and p values reported below).

28
29 *i) Neuropsychological data (Fig. 2)*

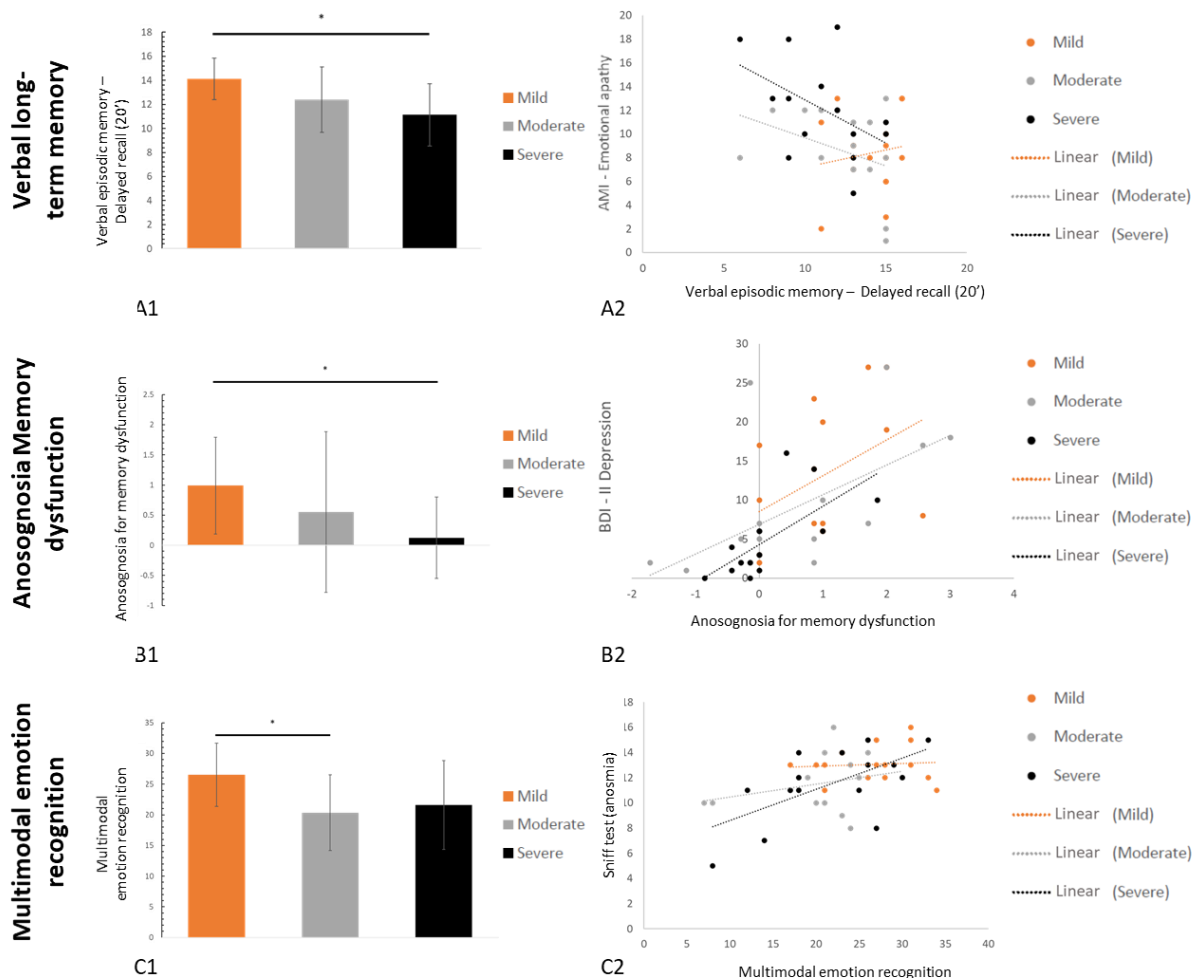
30 The three groups differed significantly on i) long-term episodic memory in both the
31 verbal (Grober and Buschke (RL/RI 16) delayed free recall, $H = 10.75$, $p = .005$) and visual
32 (Rey Figure delayed free recall, $H = 6.15$, $p = .046$) modalities, ii) multimodal emotion
33 recognition (GERT; $H = 7.55$, $p = .023$), iii) cognitive complaints (QPC; $H = 6.38$, $p = .041$)
34 and anosognosia for memory dysfunction (SAD; $H = 7.84$, $p = .020$). The other effects were
35 not significant ($p > .05$ for all comparisons).

36 *Episodic memory.* For Grober and Buschke delayed free recall, the mild patients
37 scored significantly higher than the severe patients ($z = 3.04$, $p = .002$), but the other two
38 pairwise comparisons were not significant after Bonferroni correction (moderate vs. severe: z
39 $= -1.47$, $p = .141$; mild vs. moderate: $z = 2.00$, $p = .046$). Pairwise comparisons were not
40 significant for visual episodic memory (mild vs. moderate: $z = 2.26$, $p = .023$; mild vs. severe:
41 $z = 0.48$, $p = .61$; moderate vs. severe: $z = 1.89$, $p = .059$).

42 *Emotion recognition.* Mild patients scored significantly higher than moderate patients
43 ($z = 2.61$, $p = 0.009$), but neither the difference between mild and severe patients ($z = 1.97$, p
44 $= 0.048$), nor the difference between moderate and severe patients ($z = .49$, $p = .620$) reached
45 significance after Bonferroni correction.

Long COVID-19 and cognition

46 *Cognitive complaints and anosognosia.* Mild patients had more cognitive complaints
 47 than severe patients ($z = -2.55, p = .010$), but there were no differences between either the
 48 mild and moderate patients ($z = -1.31, p = .191$), or the moderate and severe patients ($z = -$
 49 $0.93, p = .351$). By contrast, severe patients exhibited more anosognosia for memory
 50 dysfunction than mild patients did ($z = 2.97, p = .003$), while there were no differences
 51 between either the mild and moderate patients ($z = 1.41, p = .158$) or the moderate and severe
 52 patients ($z = -0.76, p = .443$).



53
 54 **Figure 2. Mean ratings (and standard deviations) for all three groups (severe in**
 55 **black, moderate in gray, and mild in orange) on tasks evaluating verbal episodic memory**

Long COVID-19 and cognition

56 **(A1), anosognosia for memory dysfunction (B1), and multimodal emotion recognition**
57 **(C1), as well as their respective predictors (A2, B2 and C2)**

58 **Note.** A2: The greater the emotional apathy, the poorer the performance on verbal
59 memory (except for the mild group); B2: The lower the depression, the greater the
60 anosognosia for memory dysfunction; C2: The poorer the olfactory recognition, the poorer the
61 emotion recognition.

62

63 ii) *Psychiatric data*

64 The three groups differed significantly on depression ($H = 9.40, p = .009$), state
65 anxiety ($H = 12.93, p = .002$), emotional apathy ($H = 7.10, p = .029$), stress ($H = 7.55, p =$
66 $.023$), and emotional contagion ($H = 9.73, p = .002$). The other effects were not significant (p
67 $> .05$ for all comparisons). Pairwise comparisons for each of these group differences are
68 described below.

69 *Depression, stress, and state anxiety.* The mild patients were more depressed, stressed
70 and anxious than the severe patients (BDI-II: $z = -2.99, p = .003$; PSS: $z = -2.55, p = .010$;
71 STAI-S: $z = -3.57, p < .001$), while there were no differences between either the severe and
72 moderate patients (BDI-II: $z = -1.38, p = .165$; PSS: $z = -1.08, p = .281$; STAI-S: $z = -1.76, p$
73 $= .078$) or the mild and moderate patients (BDI II: $z = -1.66, p = .097$; PSS: $z = -1.08, p =$
74 $.281$; STAI-S: $z = -1.72, p = .085$).

75 *Apathy.* For the AMI emotional subscore, pairwise comparisons failed to reach
76 significance after Bonferroni correction (severe vs. mild: $z = 2.32, p = .020$; severe vs.
77 moderate: $z = 2.20, p = .028$, mild vs. moderate: $z = 0.08, p = .933$).

Long COVID-19 and cognition

78 *Emotional contagion.* Pairwise comparisons failed to reach significance after
79 Bonferroni correction (severe vs. moderate: $z = -3.03, p = .017$; severe vs. mild: $z = -1.89, p =$
80 $.059$; moderate vs. mild: $z = 1.18, p = .237$).

81

82 *iii) Fatigue and quality of life*

83 Finally, the three groups differed on insomnia ($H = 6.66, p = .036$), fatigue ($H = 6.45,$
84 $p = .040$), vitality ($H = 6.50, p = .039$), and emotional wellbeing ($H = 9.18, p = .010$). The
85 other effects were not significant ($p > .05$ for all comparisons).

86 The mild patients reported more fatigue than the severe patients ($z = -2.57, p = .010$),
87 while there were no differences between either the mild and moderate patients ($z = -0.71, p =$
88 $.481$) or both moderate and severe patients ($z = -1.52, p = .130$). Pairwise comparisons did not
89 reach significance after Bonferroni correction (mild vs. moderate: $z = -1.99, p = .046$; mild vs.
90 severe: $z = -2.28, p = .023$; moderate vs. severe: $z = -0.71, p = .481$).

91 Conversely, severe patients reported more vitality, emotional wellbeing and social
92 function than mild patients (vitality: $z = 2.65, p = .008$; wellbeing: $z = 2.97, p = .003$; social
93 function: $z = 2.99, p = .002$). Pairwise comparisons between severe and moderate patients did
94 not reach significance after Bonferroni correction (wellbeing: $z = 2.01, p = .044$; vitality: $z =$
95 $1.06, p = .290$; social function: $z = 1.66, p = .097$), nor did those between mild and moderate
96 patients (wellbeing: $z = 0.68, p = .494$; vitality: $z = 1.12, p = .263$; social function: $z = 1.06, p$
97 $= .290$) (see Table 4).

98

Long COVID-19 and cognition

99 **Table 4: Quality of life of patients with mild, moderate or severe COVID-19 6-9**
100 **months post-infection**

101

Quality of life domains (SF-36)⁺	Mild (n = 15)	Moderate (n = 15)	Severe (n = 15)	p value
	Mean (± SD)	Mean (± SD)	Mean (± SD)	
Overall health	62.67 (± 16.89)	59.33 (± 27.31)	66.00 (± 24.14)	.808
Physical function	80.00 (± 17.22)	82.33 (± 19.44)	77.33 (± 24.41)	.806
Physical role	58.33 (± 30.86)	53.33 (± 43.16)	71.67 (± 36.43)	.353
Emotional role	64.45 (± 36.67)	73.34 (± 36.08)	80.00 (± 37.38)	.314
Social function	57.50 (± 23.05)	66.67 (± 31.93)	85.00 (± 18.42)	.011
Physical pain	57.83 (± 20.81)	72.00 (± 29.40)	71.83 (± 25.61)	.153
Emotional wellbeing	58.13 (± 17.75)	61.33 (± 24.96)	79.2 (± 17.90)	.010
Vitality score	38.66 (± 16.20)	49.00 (± 27.14)	56.00 (± 14.17)	.039
Health modification	30.00 (± 16.90)	35.00 (± 24.64)	43.33 (± 17.59)	.143

102

103 ⁺ The higher the score, the better the quality of life.

104

Long COVID-19 and cognition

105 **Relationships between neuropsychological deficits, psychiatric symptoms,** 106 **and other secondary variables**

107 The third aim was to examine whether the presence of long-term neuropsychological deficits
108 was correlated with psychiatric symptoms and/or other clinically relevant variables.

109 The results of the multiple regression performed on each cognitive variable are set out
110 in Table 5. Interestingly, apathy, depression, anxiety, emotion regulation, emotion contagion,
111 stress, PTSD, dissociative disorders, anosmia and diabetes all proved to be variables of
112 interest when it came to explaining the neuropsychological sequelae. Therefore, both
113 psychiatric and nonpsychiatric data correlated with neuropsychological deficits across the
114 three groups. There were at least three patterns of results, depending on the
115 neuropsychological domain: i) patterns in which neuropsychological sequelae did not
116 correlate with any psychiatric variables, but did with other clinical variables, such as
117 visuospatial long-term episodic memory (delayed recall of Rey-Osterrieth complex figure); ii)
118 patterns in which neuropsychological sequelae correlated with both psychiatric and clinical
119 variables, such as the object and action naming task scores (language); and iii) patterns in
120 which neuropsychological sequelae only correlated with psychiatric variables, such as
121 categorical verbal fluency. There was also a fourth possible pattern where the
122 neuropsychological sequelae correlated neither with psychiatric variables nor with clinical
123 ones, such as the score on the object decision task (object perception).

124 To reduce the dimensionality of the dataset, we computed a PCA. We selected the first
125 three orthogonal components accounting for 43.67% of the total variance. The first
126 component, accounting for 26.75% of the total variance, was difficult to interpret in terms of
127 underlying cognitive processes, as it included language (semantic word and image matching),
128 executive functions (mental flexibility), verbal episodic memory, and emotion recognition.

Long COVID-19 and cognition

129 Interestingly, these happened to be precisely the variables on which the three groups differed
130 significantly (see Section “*Neuropsychological and psychiatric symptoms as a function of*
131 *disease severity*”). We therefore labeled this component *respiratory disease severity*. The
132 second component (9.79% of total variance) was labeled *attention and anosognosia*, as it
133 included alertness, divided attention, and anosognosia for executive dysfunction. The third
134 component (7.15% of total variance) was labeled *instrumental functions*, as it included
135 language, visual perception, and ideomotor praxis.

136 For the respiratory disease severity component, the best fit was achieved with
137 emotional apathy ($R^2 = .28, p = .007$), stress ($R^2 = .19, p = .013$), and anosmia ($R^2 = .11, p =$
138 $.03$). For the attention and anosognosia component, the multiple regression was not significant
139 ($p > .1$). For the instrumental functions component, the best fit was achieved with anosmia (R^2
140 $= .23, p = .04$), mania ($R^2 = .23, p = .006$), and social apathy ($R^2 = .17, p = .004$).

141

Long COVID-19 and cognition

142 **Table 5. Multiple regression results for each of the neuropsychological variables**

		Regressor	R ²	p value
Memory functions				
Verbal episodic memory	Grober & Buschke (RL/RI 16) - Immediate recall	<i>ns</i>	<i>ns</i>	<i>ns</i>
	Grober & Buschke (RL/RI 16) - Delayed free recall	AMI – Emotional apathy	.45	.006
		Epworth - Sleepiness	.20	.022
		ERQ – Emotion regulation	.13	.034
		ECS – Emotion contagion	.08	.034
	Grober & Buschke (RL/RI 16) - Delayed total recall	AMI – Emotional apathy	.34	.022
		Epworth - Sleepiness	.22	.031
		AMI – Social apathy	.15	.034
Visuospatial episodic memory	Rey Figure - Copy time	ISI - Insomnia	.46	.005
		ERQ – Emotional regulation	.18	.035
	Rey Figure - Score	<i>ns</i>	<i>ns</i>	<i>ns</i>
	Rey Figure - Immediate recall (3')	<i>ns</i>	<i>ns</i>	<i>ns</i>
	Rey Figure - Delayed recall (20')	ISI – Insomnia	.30	.034
		Days of hospitalization	.22	.039
		Sniff test (anosmia)	.21	.013
Verbal short-term memory	MEM III - Spans	<i>ns</i>	<i>ns</i>	<i>ns</i>
Visuospatial short-term memory	WAIS IV - Spans	DES – Dissociation	.30	.035

Long COVID-19 and cognition

Executive functions				
Inhibition	Stroop (GREFEX) - Interference - Time	<i>ns</i>	<i>ns</i>	<i>ns</i>
	Stroop (GREFEX)- Interference - Errors	AMI – Total apathy	.37	.015
		ERQ – Emotion regulation	.21	.030
	Stroop (GREFEX) - Interference/Naming - Score	<i>ns</i>	<i>ns</i>	<i>ns</i>
Working memory	MEM III – Verbal working memory	AMI – Behavioral apathy	.33	.026
	WAIS IV - Visuospatial working memory	STAI-T Anxiety	.39	.013
		Diabetes	.25	.014
		STAI-S Anxiety	.13	.03
	TAP - Working memory item omissions	AMI – Emotional apathy	.30	.035
	TAP - Working memory false alarms	Diabetes	.47	.005
		Mania – Goldberg Inventory	.16	.044
Mental flexibility	TMT A (GREFEX) - Time	<i>ns</i>	<i>ns</i>	<i>ns</i>
	TMT A (GREFEX) - Errors	<i>ns</i>	<i>ns</i>	<i>ns</i>
	TMT B (GREFEX) - Time	<i>ns</i>	<i>ns</i>	<i>ns</i>
	TMT B (GREFEX) - Errors	AMI – Total apathy	.41	.010
		ERQ – Emotion regulation	.14	.024
		Gender	.13	.025

Long COVID-19 and cognition

	TMT B (GREFEX) - Perseverations	STAI-T Anxiety	.55	.002
		BDI-II - Depression	.16	.026
		ISI – Insomnia	.20	<.001
	TMT B-A (GREFEX) - Score	<i>ns</i>	<i>ns</i>	<i>ns</i>
	Verbal fluency (GREFEX) - Literal (2')	<i>ns</i>	<i>ns</i>	<i>ns</i>
	Verbal fluency (GREFEX) - Categorical fluency (2')	DES - Dissociation	.28	.047
Incompatibility	TAP - Compatibility – Reaction time	AMI – Social apathy	.50	.003
	TAP - Compatibility - False alarms	<i>ns</i>	<i>ns</i>	<i>ns</i>
	TAP - Incompatibility - Reaction Time	Sniff test (anosmia)	.28	.043
		DES - Dissociation	.25	.026
		ERQ – Emotion regulation	.13	.028
		Epworth - Sleepiness	.10	.017
	TAP - Incompatibility - False alarms	Sniff test (anosmia)	.27	.045
	TAP - Incompatibility - Visual field score	Days of hospitalization	.39	.013
		Diabetes	.23	.007
		STAI-T Anxiety	.08	.041
		PCL-5 Posttraumatic stress disorder	.06	.041
	TAP - Incompatibility task - Hands score	AMI – Social apathy	.44	.008

Long COVID-19 and cognition

	TAP - Incompatibility task - Visual fields * Hands score	ISI – Insomnia	.33	.025
		STAI-T Anxiety	.24	.025
		BDI-II - Depression	.18	.019
Attentional functions				
Phasic alertness	TAP - Without warning sound - Reaction time	Gender	.35	.019
	TAP - Without warning sound - <i>SD</i> of reaction time	AMI – Social apathy	.64	<.001
		Diabetes	.11	.041
		Sniff test (anosmia)	.10	.023
	TAP - With warning sound - Reaction time	DES - Dissociation	.30	.033
	TAP - With warning sound - <i>SD</i> of reaction time	<i>ns</i>	<i>ns</i>	<i>ns</i>
	TAP - Alertness index	Gender	.28	.041
Sustained attention	TAP - Items Omissions	STAI-Trait Anxiety	.46	.005
	TAP - False alarm	<i>ns</i>	<i>ns</i>	<i>ns</i>
Divided attention	TAP - Audio condition - Reaction time	DES - Dissociation	.41	.010
		AMI – Behavioral apathy	.27	.008
	TAP - Visual condition - Reaction time	Days of hospitalization	.38	.014
		Sniff test (anosmia)	.27	.009
		ISI - Insomnia	.23	<.001
		AMI – Emotional apathy	.05	.016
	TAP - Total omissions	<i>ns</i>	<i>ns</i>	<i>ns</i>
	TAP - Total false alarms	AMI – Emotional apathy	.32	.029

Long COVID-19 and cognition

		Epworth - Sleepiness	.28	.015
		AMI – Social apathy	.16	.023
Instrumental functions				
Language	BECLA - Semantic image matching	<i>ns</i>	<i>ns</i>	<i>ns</i>
	BECLA - Semantic word matching	<i>ns</i>	<i>ns</i>	<i>ns</i>
	BECLA - Object and action image naming	ECS – Emotional contagion	.38	.014
		STAI-State Anxiety	.29	.007
		AMI – Emotional apathy	.10	.014
		ISI - Insomnia	.08	.012
	BECLA - Word repetition	NV	NV	NV
	BECLA - Nonword repetition	<i>ns</i>	<i>ns</i>	<i>ns</i>
Ideomotor praxis	Symbolic gestures	ERQ – Emotion regulation	.35	.019
		AMI – Behavioral apathy	.33	.004
	Action pantomimes	BDI-II - Depression	.51	.003
	Meaningless gestures	AMI – Total apathy	.30	.033
		AMI – Social apathy	.18	.035
Object perception	VOSP - Fragmented letters	AMI – Total apathy	.26	.029
	VOSP - Object decision	<i>ns</i>	<i>ns</i>	<i>ns</i>
Spatial perception	VOSP - Number localization	<i>ns</i>	<i>ns</i>	<i>ns</i>
	VOSP - Cubic counting	Mania – Goldberg Inventory	.27	.047
		PSS - Stress	.24	.034
Logical reasoning	WAIS IV - Puzzle	Diabetes	.34	.021
	WAIS IV - Matrix	DES - Dissociation	.28	.041
		Gender	.40	.002

Long COVID-19 and cognition

Emotion recognition	GERT	ERQ – Emotion regulation	.33	.023
		AMI – Emotional apathy	.28	.011
		AMI – Behavioral apathy	.16	.004
		Sniff test (anosmia)	.06	.008
		AMI – Social apathy	.02	.027
Anosognosia	Memory dysfunctions	BDI-II - Depression	.62	<.001
		ISI - Insomnia	.12	.038
		AMI – Behavioral apathy	.09	.040
		Epworth - Sleepiness	.05	.033
	Executive functions - Inhibition	AMI – Total apathy	.40	.011
	Executive functions - Flexibility	AMI – Behavioral score	.28	.043
	Executive functions – Working memory	Epworth - Sleepiness	.38	.015
		Sniff test (anosmia)	.25	.015

143 **Abbreviations:** AMI-behavioral: Apathy Motivation Index – behavioral score (Ang et
144 al., 2017); AMI-emotional: Apathy Motivation Index – emotional score (Ang et al., 2017);
145 AMI-social: Apathy Motivation Index – social score (Ang et al., 2017); AMI-total: Apathy
146 Motivation Index – total score (Ang et al., 2017); BDI-II: Beck Depression Inventory-Second
147 Edition (Beck et al., 1996); BECLA: Batterie d’Evaluation Cognitive du Langage (Macoir et
148 al., 2016); DES: Dissociative Experience Scale (Carlson & Putnam, 1986); ECS: Emotion
149 Contagion Scale (Doherty, 1997); ERQ: Emotion Regulation Questionnaire (Gross & John,
150 2003); GERT: Geneva Emotion Recognition Test (Schlegel et al., 2014); Goldberg-Inventory:
151 Goldberg Mania Inventory (Goldberg, 1993); GREFEX: Groupe de Réflexion sur
152 l’Evaluation des Fonctions Exécutives (Roussel & Godefroy, 2008); MEM III: Wechsler
153 Memory Scale – Third Edition (Drozdick et al., 2018); NV: no variance; *ns*: not significant;
154 PCL-5: Posttraumatic Stress Disorder Checklist for DSM-5 (Ashbaugh et al., 2016); PSS-14:

Long COVID-19 and cognition

- 155 Perceived Stress Scale – 14 items (Lesage et al., 2012); Rey figure: Rey-Osterrieth Complex
156 Figure test (Meyers & Meyers, 1995); RL/RI 16: free/cued recall 16 items (RL/RI-16)
157 (Grober & Buschke, 1987); *SD*: standard deviation; STAI-S: State-Trait Anxiety Inventory
158 (Spielberger et al., 1993) STAI-T: State-Trait Anxiety Inventory (Spielberger et al., 1993);
159 TAP: Test for Attentional Performance (TAP), Version 2.1 (Zimmermann & Fimm, 2007);
160 TMT: Trail Making Test; VOSP: Visual Object and Space Perception battery (Warrington &
161 James, 1991); WAIS IV: Wechsler Adult Intelligence Scale–Fourth Edition (Wechsler, 2008).

Long COVID-19 and cognition

162 **DISCUSSION**

163 Even though there is growing evidence that SARS-CoV-2 can cause brain damage in the long
164 term, with an impact on cognition even in its mild and moderate forms, to date, the occurrence
165 and nature of such sequelae, the impact of respiratory disease severity in the acute phase, and
166 the relationship between these impairments and psychiatric disorders triggered or exacerbated
167 by the pandemic have not been studied in detail within a single sample of patients. In
168 addition, areas such as instrumental functions (ideomotor praxis, visual perception, or
169 language), cognitive complaints, anosognosia, and emotion recognition following SARS-
170 CoV-2 have yet to be explored. Finally, the relevant medical events have not been controlled
171 in studies published thus far. The present study used a robust, psychometrically validated
172 methodology and a stringent approach to the normative data of neuropsychological tests
173 (excluding borderline scores from the prevalence calculation). We included patients with no
174 history of cancer or neurological and developmental disorders, and no active psychiatric
175 disorders before SARS-CoV-2 infection, and divided them into mild, moderate and severe
176 groups, according to the respiratory severity of the disease during its acute phase.

177 The present study therefore improves our understanding of what we can call
178 *neurological long COVID*, highlighting three main patterns of results. First, important
179 prevalence of patients *across the three groups* performed below the normality threshold in all
180 domains of cognition (except ideomotor praxis) 6-9 months post-infection with SARS-CoV-2.
181 The prevalence of psychiatric symptoms, regardless of disease severity during the acute
182 phase, was also high, and individuals in all three groups exhibited depressive symptoms,
183 anxiety, mania, apathy, stress, PTSD and dissociative disorders, as well as reporting insomnia,
184 fatigue and pathological somnolence. Regarding olfaction, 33.33% of the mild group, 73.33%
185 of the moderate group, and 46.66% of the severe group were still hyposmic 6-9 months

Long COVID-19 and cognition

186 following infection, and 13.33% of the severe group were still anosmic. Second, despite the
187 presence of common cognitive deficits across the three groups, some domains of cognition
188 and mood were differentially impacted by the severity of respiratory disease during the acute
189 phase: the severe group performed more poorly than the mild group on long-term episodic
190 memory, and also exhibited more anosognosia for memory dysfunction. The mild group was
191 more depressed, stressed and anxious, and reported more cognitive complaints. Finally, the
192 moderate group recognized multimodal emotions less well than the mild group. All of this had
193 a substantial impact on patients' quality of life. Third, as predicted, neuropsychological
194 deficits correlated with psychiatric disorders such as depressive symptoms, stress and mania,
195 but not all of the variance was explained by psychiatric symptoms or transdiagnostic
196 syndrome (Husain & Roiser, 2018). A large proportion of the variance was explained by other
197 clinical variables. For instance, the long-term episodic memory deficits displayed by the
198 severe group were positively correlated with emotional apathy, their anosognosia for memory
199 dysfunction was correlated with depression, and their diminished emotion recognition, shared
200 by the moderate group, was positively correlated with hyposmia and/or anosmia.

201 The present study had several limitations that need to be acknowledged and addressed
202 before we can draw any inferences from our results. The first drawback was a possible
203 recruitment bias. By enrolling volunteers, we may have selected the most severe cases in the
204 mild group (who were interested in the study because of their cognitive complaints), while we
205 may not have recruited the most cognitively affected in the severe group, because they were
206 too disabled to join the study. Second, we had greater proportions of men and diabetics in the
207 severe group. These factors may have had an influence on the cognitive deficits observed in
208 this group, as diabetes is known to impact cognition (McCrimmon, Ryan, & Frier, 2012), and
209 gender on depression (Spagnolo, Manson, & Joffe, 2020), with a greater prevalence in women

Long COVID-19 and cognition

210 (Mazza et al., 2020). That said, although the proportion of women was higher for both the
211 mild and moderate groups, the mean depression scores by gender in the mild (women: $13.50 \pm$
212 9.10 ; men: 12.57 ± 8.52) and moderate (women: 6.11 ± 5.25 ; men: 13.33 ± 11.25) groups did
213 not indicate a greater proportion of women with depressive symptoms. Third, stroke is more
214 prevalent in patients after a severe SARS-CoV-2 infection (Merkler et al., 2020; Nannoni et
215 al., 2020), and may have gone unseen during the acute phase. In our study, no patient had any
216 central neurological deficit excluding major stroke, but minor stroke cannot be ruled out. Two
217 patients in the severe group reported mild signs of peripheral neuropathy, which may have
218 been due to their diabetes and not a direct consequence of the SARS-CoV-2 infection, while
219 one patient in the severe group had an unstable gait. Fourth, the absence of a control group
220 prevented us from observing a possible general effect of the pandemic and the resulting public
221 health measures on mental health. In the present study, the analyses of prevalence were based
222 on standardized normative data, allowing us to run comparisons with the normal population.
223 The tests were chosen carefully for their psychometric validity, with adequate sensitivity and
224 specificity. It is interesting to note that in a recent study, our multimodal emotion recognition
225 task (GERT) was administered to 469 participants during the pandemic (Schlegel, von
226 Gugelberg, Makowski, Gubler, & Troche, 2021) but the authors failed to find a reduction in
227 performances compared with validation studies (Schlegel et al., 2014), reinforcing the
228 hypothesis that our results reflected a specific effect of the infection and not just the public
229 health context. Fifth and last, it is important to note the relatively small number of
230 participants, which prevented us from considering more covariates. Nevertheless, the power
231 analysis, based on a previous study of the neurocognitive effects of SARS-CoV-2, did allow
232 us to estimate the necessary sample size.

Long COVID-19 and cognition

233 The present results demonstrate that cognitive deficits can be observed 6-9 months
234 post-SARS-CoV-2 infection, regardless of the severity of the disease in the acute phase. They
235 corroborate previous observations for the executive, attentional and memory domains, and go
236 one step further, with exhaustive neuropsychological and psychiatric assessments
237 demonstrating impairments in other previously unexplored cognitive and psychiatric domains.
238 Impairments were evident not only in the severe patient group, but also in the moderate and
239 mild groups. These deficits had an impact on quality of life, notably in the mild patients, as
240 evidenced by our results. These findings could be of great importance in understanding the
241 long-term damage and consequences of SARS-CoV-2 infection on cognition and mental
242 health. The relatively high prevalence of certain cognitive and psychiatric disorders,
243 regardless of the severity of the disease in the acute phase, suggests that long-term patient
244 management following SARS-CoV-2 infection may need to be adapted. Importantly, the
245 etiology of these disorders needs to be established, in order to provide people experiencing
246 these long-term sequelae with the best possible care. One potential explanation for these
247 effects, based on observational studies of the psychiatric impact of the pandemic in the
248 general population (Bäuerle et al., 2020), is that these cognitive deficits result from a stressful
249 or traumatic context. In this case, specific interventions on certain psychiatric variables could
250 considerably reduce their long-term impact on cognition and improve daily functioning.
251 Nevertheless, the present results do not exclude the hypothesis of direct damage of brain
252 networks by SARS-CoV-2 and its neurotropism, as well as indirect neurobiological effects,
253 which could lead to both to psychiatric and neurological disorders. COVID-19 may induce
254 CNS disturbance, and four main pathogenic mechanisms may act in combination: i) direct
255 viral encephalitis, ii) systemic inflammation, iii) peripheral organ dysfunction (liver, kidney,
256 lung), and iv) cerebrovascular changes (Iadecola, Anrather, & Kamel, 2020). At this stage, it

Long COVID-19 and cognition

257 is difficult to determine whether the cognitive deficits can be regarded as a marker of brain
258 damage, and/or should be linked to psychiatric variables that may themselves result directly
259 from infection with SARS-CoV-2 or else be triggered by the stressful nature of the general
260 pandemic and the individual experience of the disease.

261 Second, this study highlighted the presence of differential cognitive and psychiatric
262 profiles at 6-9 months post-infection as a function of the respiratory severity of the SARS-
263 CoV-2 infection in the acute phase. This suggests the existence of different clinical
264 phenotypes. In the identification/discrimination of these phenotypes, different cognitive
265 variables seem to be of interest, starting with cognitive complaints and anosognosia. While
266 the severe patients exhibited anosognosia for their memory dysfunction and greater long-term
267 verbal memory impairment than the mild patients did, the latter had more cognitive
268 complaints. This fits in well with the observations of Almeria et al. (2020), who found that the
269 patients with the most serious cognitive complaints did not have significantly more
270 neuropsychological impairments. In this sense, the tendency of the severe patients to report
271 greater wellbeing in quality-of-life assessments, together with the lack of awareness of their
272 cognitive difficulties, may be a clinical characteristic to bear in mind when interviewing this
273 type of patient. The present results in the domain of emotion recognition and episodic
274 memory are also highly relevant to the current debate on the neurotropism of SARS-CoV-2.
275 One of the main hypotheses regarding the pathways of direct attack of the CNS assumes
276 olfactory transmucosal invasion by the virus (Meinhardt et al., 2021). This hypothesis appears
277 to be supported by our results. It is worth noting that episodic memory and emotion
278 recognition were identified in a PCA as variables that explained most of the variance of our
279 data, and this first component was significantly correlated with hyposmia/anosmia, in addition
280 to stress and emotional apathy. Interestingly, a recent ¹⁸F-FDG PET study demonstrated

Long COVID-19 and cognition

281 hypometabolism at about 8 weeks post-infection in brain regions common to emotion and
282 olfaction in patients with SARS-CoV-2 (Guedj et al., 2020). Moreover, the literature suggests
283 that the viral load was probably greater in our severe group (Fajnzylber et al., 2020; Magleby
284 et al., 2020), which may have contributed to stronger effects on olfaction and emotion
285 recognition. This pathway could also partially explain the psychiatric results via disruption of
286 the limbic network, including subcortical regions (Lane, 2008), by SARS-CoV-2.

287 Our third level of analysis enabled us to go further in characterizing the hypothesized
288 clinical phenotypes. Quantified results pointed to the presence of at least three profiles
289 (patient clusters), corroborating the clinical impressions we had when interviewing and
290 assessing the patients for this study. Patients with the first (neurological) profile were
291 typically aged about 55 years, mostly men, of average educational level, and a small
292 proportion of them had a history of diabetes, cardiovascular disease, or sleep apnea syndrome.
293 At the cognitive level, these patients displayed long-term memory, executive and language
294 disorders. They had more severe anosognosia for their memory difficulties. Nearly all of them
295 reported sleep disorders and emotional apathy. Patients with the second (psychiatric) profile
296 were aged about 45-50 years, and there were equal numbers of men and women. No
297 significant medical antecedents were noted, and the majority of them had had mild or
298 moderate respiratory disease. At the cognitive level, they displayed executive and attentional
299 dysfunctions, which could influence other cognitive domains (e.g., memory recall strategies).
300 At the psychiatric level, they had high scores for depressive symptoms, anxiety, insomnia and
301 stress, and more sporadically exhibited PTSD and dissociative disorders. Our results also
302 indicated the presence of a third (mixed) profile combining the symptoms and clinical
303 characteristics of the two previously described profiles.

304

Long COVID-19 and cognition

305 **CONCLUSION**

306 This study unambiguously demonstrates the presence of long-term neuropsychological
307 sequelae following SARS-CoV-2 infection, regardless of the severity of the respiratory
308 disease in the acute phase. Some of the cognitive deficits could be explained by psychiatric
309 variables, emphasizing the importance of considering a broad range of psychiatric symptoms.
310 However, not all neuropsychological sequelae could be explained by these variables. The
311 presence of correlations between olfaction, emotion recognition and episodic memory, which
312 share common functional and anatomical substrates, reinforces the hypothesis that the virus
313 targets the CNS (and notably the limbic system). Finally, the data support the notion of
314 different clinical phenotypes, paving the way for clinical guidelines and recommendations for
315 the management of long-term neurological impairment following SARS-CoV-2 infection.

Long COVID-19 and cognition

316 **ACKNOWLEDGEMENTS**

317 The present research was supported by the Swiss National Science Foundation (SNSF)
318 within the framework of the COVID-19 National Research Program (NRP 78; grant no.
319 407840_198438, RNP 78) to JAP (PI) and FA (Co-PI). The funders had no role in data
320 collection, discussion of content, preparation of the manuscript, or decision to publish. We
321 would like to thank the patients for contributing their time to this study.

322

323 **CONFLICT OF INTEREST**

324 The authors report no conflicts of interest.

325

326

Long COVID-19 and cognition

327 **REFERENCES**

- 328 Almeria, M., Cejudo, J., Sotoca, J., Deus, J., & Krupinski, J. (2020). Cognitive profile
329 following COVID-19 infection: Clinical predictors leading to neuropsychological
330 impairment. *Brain, behavior, & immunity-health*, *9*, 100163.
- 331 Ang, Y.-S., Lockwood, P., Apps, M. A., Muhammed, K., & Husain, M. (2017). Distinct
332 subtypes of apathy revealed by the apathy motivation index. *PLoS One*, *12*(1),
333 e0169938.
- 334 Ashbaugh, A. R., Houle-Johnson, S., Herbert, C., El-Hage, W., & Brunet, A. (2016).
335 Psychometric validation of the English and French versions of the Posttraumatic Stress
336 Disorder Checklist for DSM-5 (PCL-5). *PloS one*, *11*(10).
- 337 Baig, A. M., Khaleeq, A., Ali, U., & Syeda, H. (2020). Evidence of the COVID-19 virus
338 targeting the CNS: tissue distribution, host–virus interaction, and proposed
339 neurotropic mechanisms. *ACS chemical neuroscience*, *11*(7), 995-998.
- 340 Bäuerle, A., Teufel, M., Musche, V., Weismüller, B., Kohler, H., Hetkamp, M., . . . Skoda, E.-
341 M. (2020). Increased generalized anxiety, depression and distress during the COVID-
342 19 pandemic: a cross-sectional study in Germany. *Journal of Public Health*, *42*(4),
343 672-678.
- 344 Beck, A. T., Steer, R. A., & Brown, G. K. (1996). Manual for the beck depression inventory-
345 II. *San Antonio, TX: Psychological Corporation*, *1*, 82.
- 346 Bousquet, J., Bullinger, M., Fayol, C., Marquis, P., Valentin, B., & Burtin, B. (1994).
347 Assessment of quality of life in patients with perennial allergic rhinitis with the French
348 version of the SF-36 Health Status Questionnaire. *Journal of allergy and clinical*
349 *immunology*, *94*(2), 182-188.

Long COVID-19 and cognition

- 350 Brann, D. H., Tsukahara, T., Weinreb, C., Lipovsek, M., Van den Berge, K., Gong, B., . . .
351 Fletcher, R. B. (2020). Non-neuronal expression of SARS-CoV-2 entry genes in the
352 olfactory system suggests mechanisms underlying COVID-19-associated anosmia.
353 *Science advances*, 6(31), eabc5801.
- 354 Butowt, R., & Bilinska, K. (2020). SARS-CoV-2: olfaction, brain infection, and the urgent
355 need for clinical samples allowing earlier virus detection. *ACS chemical neuroscience*,
356 11(9), 1200-1203.
- 357 Carlson, E. B., & Putnam, F. W. (1986). Dissociative experiences scale. *Journal of Nervous
358 and Mental Disease*, 174(12).
- 359 Cascella, M., Di Napoli, R., Carbone, D., Cuomo, G. F., Bimonte, S., & Muzio, M. R. (2018).
360 Chemotherapy-related cognitive impairment: mechanisms, clinical features and
361 research perspectives. *Recenti progressi in medicina*, 109(11), 523-530.
- 362 De Maria, A., Varese, P., Dentone, C., Barisione, E., & Bassetti, M. (2020). High prevalence
363 of olfactory and taste disorder during SARS-CoV-2 infection in outpatients. *Journal of
364 medical virology*, 92(11), 2310-2311.
- 365 Debouverie, M., Pittion-Vouyovitch, S., Louis, S., & Guillemin, F. (2007). Validity of a
366 French version of the fatigue impact scale in multiple sclerosis. *Multiple Sclerosis
367 Journal*, 13(8), 1026-1032.
- 368 Doherty, R. W. (1997). The emotional contagion scale: A measure of individual differences.
369 *Journal of nonverbal Behavior*, 21(2), 131-154.
- 370 Doty, R. L. (2008). The olfactory vector hypothesis of neurodegenerative disease: is it viable?
371 *Annals of Neurology: Official Journal of the American Neurological Association and
372 the Child Neurology Society*, 63(1), 7-15.

Long COVID-19 and cognition

- 373 Drozdick, L. W., Raiford, S. E., Wahlstrom, D., & Weiss, L. G. (2018). The Wechsler Adult
374 Intelligence Scale—Fourth Edition and the Wechsler Memory Scale—Fourth Edition.
375 Fajnzylber, J., Regan, J., Coxen, K., Corry, H., Wong, C., Rosenthal, A., . . . Atyeo, C.
376 (2020). SARS-CoV-2 viral load is associated with increased disease severity and
377 mortality. *Nature communications*, *11*(1), 1-9.
- 378 Fodoulian, L., Tuberosa, J., Rossier, D., Boillat, M., Kan, C., Pauli, V., . . . Carleton, A.
379 (2020). Sars-cov-2 receptors and entry genes are expressed in the human olfactory
380 neuroepithelium and brain. *Isience*, *23*(12), 101839.
- 381 Frei, A., Balzer, C., Gysi, F., Leros, J., Plohmann, A., & Steiger, G. (2016). Kriterien zur
382 Bestimmung des Schweregrades einer neuropsychologischen Störung sowie
383 Zuordnungen zur Funktions-und Arbeitsfähigkeit. *Zeitschrift für Neuropsychologie*.
- 384 Goldberg, I. K. (1993). *Questions & Answers about Depression and its Treatment: a*
385 *consultation with a leading psychiatrist*: Charles PressPub.
- 386 Grober, E., & Buschke, H. (1987). Genuine memory deficits in dementia. *Dev. Neuropsychol*,
387 *3*, 13-36.
- 388 Gross, J., & John, O. (2003). Emotion regulation questionnaire. *NeuroImage*, *48*(10), 9-9.
- 389 Guedj, Champion, J., Dudouet, P., Kaphan, E., Bregeon, F., Tissot-Dupont, H., . . . Ceccaldi,
390 M. (2021). 18 F-FDG brain PET hypometabolism in patients with long COVID.
391 *European journal of nuclear medicine and molecular imaging*, 1-11.
- 392 Guedj, Million, M., Dudouet, P., Tissot-Dupont, H., Bregeon, F., Cammilleri, S., & Raoult,
393 D. (2020). 18 F-FDG brain PET hypometabolism in post-SARS-CoV-2 infection:
394 substrate for persistent/delayed disorders? *European journal of nuclear medicine and*
395 *molecular imaging*, 1-4.

Long COVID-19 and cognition

- 396 Hampshire, A., Trender, W., Chamberlain, S., Jolly, A., Grant, J. E., Patrick, F., . . . Hellyer,
397 P. (2020). Cognitive deficits in people who have recovered from COVID-19 relative
398 to controls: An N= 84,285 online study. *MedRxiv*.
- 399 Heaton, R. K., Grant, I., & Matthews, C. G. (1991). *Comprehensive norms for an expanded*
400 *Halstead-Reitan battery: demographic corrections, research findings, and clinical*
401 *applications; with a supplement for the Wechsler Adult Intelligence Scale-Revised*
402 *(WAIS-R)*: Psychological Assessment Resources.
- 403 Husain, M., & Roiser, J. P. (2018). Neuroscience of apathy and anhedonia: a transdiagnostic
404 approach. *Nature Reviews Neuroscience*, *19*(8), 470-484.
- 405 Iadecola, C., Anrather, J., & Kamel, H. (2020). Effects of COVID-19 on the nervous system.
406 *Cell*.
- 407 Johns, M. W. (1991). A new method for measuring daytime sleepiness: the Epworth
408 sleepiness scale. *sleep*, *14*(6), 540-545.
- 409 Kandemirli, S. G., Altundag, A., Yildirim, D., Sanli, D. E. T., & Saatci, O. (2021). Olfactory
410 Bulb MRI and paranasal sinus CT findings in persistent COVID-19 anosmia.
411 *Academic Radiology*, *28*(1), 28-35.
- 412 Kessels, R. P., Van Zandvoort, M. J., Postma, A., Kappelle, L. J., & De Haan, E. H. (2000).
413 The Corsi block-tapping task: standardization and normative data. *Applied*
414 *neuropsychology*, *7*(4), 252-258.
- 415 Kohler, O., Krogh, J., Mors, O., & Eriksen Benros, M. (2016). Inflammation in depression
416 and the potential for anti-inflammatory treatment. *Current neuropharmacology*, *14*(7),
417 732-742.
- 418 Landis, B. N., Vodicka, J., & Hummel, T. (2010). Olfactory dysfunction following herpetic
419 meningoencephalitis. *Journal of neurology*, *257*(3), 439-443.

Long COVID-19 and cognition

- 420 Lane, R. D. (2008). Neural substrates of implicit and explicit emotional processes: a unifying
421 framework for psychosomatic medicine. *Psychosomatic medicine*, 70(2), 214-231.
- 422 Lee, J.-M., & Lee, S. J. (2020). Olfactory and gustatory dysfunction in a COVID-19 patient
423 with ankylosing spondylitis treated with etanercept: case report. *Journal of Korean
424 medical science*, 35(21).
- 425 Lehmann, E. L. (2012). Parametric versus nonparametrics: two alternative methodologies. In
426 *Selected works of EL Lehmann* (pp. 437-445): Springer.
- 427 Leicht, H., Berwig, M., & Gertz, H.-J. (2010). Anosognosia in Alzheimer's disease: the role of
428 impairment levels in assessment of insight across domains. *Journal of the
429 International Neuropsychological Society: JINS*, 16(3), 463.
- 430 Lesage, F.-X., Berjot, S., & Deschamps, F. (2012). Psychometric properties of the French
431 versions of the Perceived Stress Scale. *International journal of occupational medicine
432 and environmental health*, 25(2), 178-184.
- 433 Macoir, J., Gauthier, C., Jean, C., & Potvin, O. (2016). BECLA, a new assessment battery for
434 acquired deficits of language: Normative data from Quebec-French healthy younger
435 and older adults. *Journal of the neurological sciences*, 361, 220-228.
- 436 Magleby, R., Westblade, L. F., Trzebucki, A., Simon, M. S., Rajan, M., Park, J., . . . Satlin,
437 M. J. (2020). Impact of SARS-CoV-2 viral load on risk of intubation and mortality
438 among hospitalized patients with coronavirus disease 2019. *Clinical infectious
439 diseases*.
- 440 Mahieux-Laurent, F., Fabre, C., Galbrun, E., Dubrulle, A., Moroni, C., & Sud, G. d. r. s. l. p.
441 d. C. I.-d.-F. (2009). Validation d'une batterie brève d'évaluation des praxies
442 gestuelles pour consultation Mémoire. Évaluation chez 419 témoins, 127 patients

Long COVID-19 and cognition

- 443 atteints de troubles cognitifs légers et 320 patients atteints d'une démence. *Revue*
444 *neurologique*, 165(6-7), 560-567.
- 445 Mao, L., Jin, H., Wang, M., Hu, Y., Chen, S., He, Q., . . . Wang, D. (2020). Neurologic
446 manifestations of hospitalized patients with coronavirus disease 2019 in Wuhan,
447 China. *JAMA neurology*, 77(6), 683-690.
- 448 Mazza, M. G., De Lorenzo, R., Conte, C., Poletti, S., Vai, B., Bollettini, I., . . . Rovere-
449 Querini, P. (2020). Anxiety and depression in COVID-19 survivors: Role of
450 inflammatory and clinical predictors. *Brain, behavior, and immunity*, 89, 594-600.
- 451 McCrimmon, R. J., Ryan, C. M., & Frier, B. M. (2012). Diabetes and cognitive dysfunction.
452 *The Lancet*, 379(9833), 2291-2299.
- 453 Meinhardt, J., Radke, J., Dittmayer, C., Franz, J., Thomas, C., Mothes, R., . . . Greuel, S.
454 (2021). Olfactory transmucosal SARS-CoV-2 invasion as a port of central nervous
455 system entry in individuals with COVID-19. *Nature neuroscience*, 24(2), 168-175.
- 456 Merkler, A. E., Parikh, N. S., Mir, S., Gupta, A., Kamel, H., Lin, E., . . . Bruce, S. S. (2020).
457 Risk of ischemic stroke in patients with coronavirus disease 2019 (COVID-19) vs
458 patients with influenza. *JAMA neurology*, 77(11), 1366-1372.
- 459 Meyers, J. E., & Meyers, K. R. (1995). *Rey Complex Figure Test and recognition trial*
460 *professional manual*: Psychological Assessment Resources.
- 461 Miyake, A., Friedman, N. P., Emerson, M. J., Witzki, A. H., Howerter, A., & Wager, T. D.
462 (2000). The unity and diversity of executive functions and their contributions to
463 complex "frontal lobe" tasks: A latent variable analysis. *Cognitive psychology*, 41(1),
464 49-100.
- 465 Morin, C. M. (1993). *Insomnia: psychological assessment and management*: Guilford press.

Long COVID-19 and cognition

- 466 Nannoni, S., de Groot, R., Bell, S., & Markus, H. S. (2020). Stroke in COVID-19: a
467 systematic review and meta-analysis. *International Journal of Stroke*,
468 1747493020972922.
- 469 Oldfield, R. C. (1971). The assessment and analysis of handedness: the Edinburgh inventory.
470 *Neuropsychologia*, 9(1), 97-113.
- 471 Oxley, T. J., Mocco, J., Majidi, S., Kellner, C. P., Shoirah, H., Singh, I. P., . . . Yaeger, K. A.
472 (2020). Large-vessel stroke as a presenting feature of Covid-19 in the young. *New*
473 *England Journal of Medicine*, 382(20), e60.
- 474 Piras, M. R., Magnano, I., Canu, E. D. G., Paulus, K. S., Satta, W. M., Soddu, A., . . . Aiello,
475 I. (2003). Longitudinal study of cognitive dysfunction in multiple sclerosis:
476 neuropsychological, neuroradiological, and neurophysiological findings. *Journal of*
477 *Neurology, Neurosurgery & Psychiatry*, 74(7), 878-885.
- 478 Regina, J., Papadimitriou-Olivgeris, M., Burger, R., Le Pogam, M.-A., Niemi, T., Filippidis,
479 P., . . . Kampouri, E. (2020). Epidemiology, risk factors and clinical course of SARS-
480 CoV-2 infected patients in a Swiss university hospital: an observational retrospective
481 study. *PLoS One*, 15(11), e0240781.
- 482 Rogers, J. P., Chesney, E., Oliver, D., Pollak, T. A., McGuire, P., Fusar-Poli, P., . . . David,
483 A. S. (2020). Psychiatric and neuropsychiatric presentations associated with severe
484 coronavirus infections: a systematic review and meta-analysis with comparison to the
485 COVID-19 pandemic. *The Lancet Psychiatry*.
- 486 Röhr, S., Müller, F., Jung, F., Apfelbacher, C., Seidler, A., & Riedel-Heller, S. G. (2020).
487 Psychosocial impact of quarantine measures during serious coronavirus outbreaks: a
488 rapid review. *Psychiatrische Praxis*, 47(4), 179-189.

Long COVID-19 and cognition

- 489 Rosen, H. J., Alcantar, O., Rothlind, J., Sturm, V., Kramer, J. H., Weiner, M., & Miller, B. L.
490 (2010). Neuroanatomical correlates of cognitive self-appraisal in neurodegenerative
491 disease. *NeuroImage*, 49(4), 3358-3364.
- 492 Roth, R. M., Gioia, G. A., & Isquith, P. K. (2005). *BRIEF-A: Behavior Rating Inventory of*
493 *Executive Function--adult Version*.
- 494 Roussel, M., & Godefroy, O. (2008). La batterie GREFEX: données normatives. *Fonctions*
495 *exécutives et pathologies neurologiques et psychiatriques*, 231-252.
- 496 Salari, N., Hosseini-Far, A., Jalali, R., Vaisi-Raygani, A., Rasoulpoor, S., Mohammadi, M.,
497 . . . Khaledi-Paveh, B. (2020). Prevalence of stress, anxiety, depression among the
498 general population during the COVID-19 pandemic: a systematic review and meta-
499 analysis. *Globalization and health*, 16(1), 1-11.
- 500 Schlegel, K., Grandjean, D., & Scherer, K. R. (2014). Introducing the Geneva emotion
501 recognition test: an example of Rasch-based test development. *Psychological*
502 *Assessment*, 26(2), 666.
- 503 Schlegel, K., von Gugelberg, H. M., Makowski, L. M., Gubler, D. A., & Troche, S. J. (2021).
504 Emotion Recognition Ability as a Predictor of Well-Being During the COVID-19
505 Pandemic. *Social Psychological and Personality Science*, 1948550620982851.
- 506 Soudry, Y., Lemogne, C., Malinvaud, D., Consoli, S.-M., & Bonfils, P. (2011). Olfactory
507 system and emotion: common substrates. *European annals of otorhinolaryngology,*
508 *head and neck diseases*, 128(1), 18-23.
- 509 Spagnolo, P. A., Manson, J. E., & Joffe, H. (2020). Sex and gender differences in health: what
510 the COVID-19 pandemic can teach us. In: American College of Physicians.

Long COVID-19 and cognition

- 511 Spielberger, C. D., Gorsuch, R. L., Lushene, R., Vagg, P. R., & Jacobs, G. A. (1993). *Manuel*
512 *de l'inventaire d'anxiété état-trait forme Y (STAI-Y) [Inventory of state-trait anxiety*
513 *manual]*. Paris: Editions du Centre de Psychologie Appliquée.
- 514 Thomas-Antérion, C., Ribas, C., Honoré-Masson, S., Million, J., & Laurent, B. (2004).
515 Evaluation de la plainte cognitive de patients Alzheimer, de sujets MCI,
516 anxiodépressifs et de témoins avec le QPC (Questionnaire de Plainte Cognitive). *NPG*
517 *Neurologie-Psychiatrie-Gériatrie*, 4(20), 30-34.
- 518 Tondelli, M., Barbarulo, A. M., Vinceti, G., Vincenzi, C., Chiari, A., Nichelli, P. F., &
519 Zamboni, G. (2018). Neural correlates of Anosognosia in Alzheimer's disease and
520 mild cognitive impairment: A multi-method assessment. *Frontiers in Behavioral*
521 *Neuroscience*, 12, 100.
- 522 Troyer, E. A., Kohn, J. N., & Hong, S. (2020). Are we facing a crashing wave of
523 neuropsychiatric sequelae of COVID-19? Neuropsychiatric symptoms and potential
524 immunologic mechanisms. *Brain, behavior, and immunity*.
- 525 Vaira, L. A., Hopkins, C., Sandison, A., Manca, A., Machouchas, N., Turilli, D., . . . Cossu,
526 A. (2020). Olfactory epithelium histopathological findings in long-term coronavirus
527 disease 2019 related anosmia. *The Journal of Laryngology & Otology*, 1-5.
- 528 Van der Linden, M., Coyette, F., Poitrenaud, J., Kalafat, M., Calicis, F., Wyns, C., & Adam,
529 S. (2004). II. L'épreuve de rappel libre/rappel indicé à 16 items (RL/RI-16).
- 530 van Sonderen, A., Thijs, R. D., Coenders, E. C., Jiskoot, L. C., Sanchez, E., De Bruijn, M. A.,
531 . . . Smitt, P. A. S. (2016). Anti-LGI1 encephalitis: clinical syndrome and long-term
532 follow-up. *Neurology*, 87(14), 1449-1456.

Long COVID-19 and cognition

- 533 Varatharaj, A., Thomas, N., Ellul, M. A., Davies, N. W., Pollak, T. A., Tenorio, E. L., . . .
534 Zandi, M. (2020). Neurological and neuropsychiatric complications of COVID-19 in
535 153 patients: a UK-wide surveillance study. *The Lancet Psychiatry*, 7(10), 875-882.
- 536 Wang, C., Pan, R., Wan, X., Tan, Y., Xu, L., Ho, C. S., & Ho, R. C. (2020). Immediate
537 psychological responses and associated factors during the initial stage of the 2019
538 coronavirus disease (COVID-19) epidemic among the general population in China.
539 *International journal of environmental research and public health*, 17(5), 1729.
- 540 Warrington, E. K., & James, M. (1991). The visual object and space perception battery.
- 541 Wechsler, D. (2008). Wechsler adult intelligence scale—Fourth Edition (WAIS—IV). *San*
542 *Antonio, TX: NCS Pearson*, 22(498), 1.
- 543 Wendelken, L. A., & Valcour, V. (2012). Impact of HIV and aging on neuropsychological
544 function. *Journal of neurovirology*, 18(4), 256-263.
- 545 Woo, M. S., Malsy, J., Pöttgen, J., Seddiq Zai, S., Ufer, F., Hadjilaou, A., . . . Heesen, C.
546 (2020). Frequent neurocognitive deficits after recovery from mild COVID-19. *Brain*
547 *Communications*, 2(2), fcaa205.
- 548 Zimmermann, P., & Fimm, B. (2007). Test for Attentional Performance (TAP), Version 2.1,
549 Operating Manual. *Herzogenrath: PsyTest*.
- 550
- 551

Long COVID-19 and cognition

552 SUPPLEMENTARY INDEX

553 **Supplementary Index 1. Raw scores (cognitive tests; psychiatric questionnaires**

554 **included in the principal component analysis).**

555 Grober & Buschke (RL/RI 16) - Immediate recall

556 Grober & Buschke (RL/RI 16) - Delayed free recall

557 Grober & Buschke (RL/RI 16) - Delayed total recall

558 MEM III - Spans

559 MEM III - Working verbal memory

560 WAIS IV - Spans

561 WAIS IV - Visuospatial working memory

562 Rey Figure – Copy score

563 Rey Figure - Immediate recall (3')

564 Rey Figure - Delayed recall (20')

565 Stroop (GREFEX)- Interference - Errors

566 Stroop (GREFEX)- Interference/naming - Score

567 TMT B-A (GREFEX) - Score

568 Verbal fluency (GREFEX) - Literal (2')

569 Verbal fluency (GREFEX) - Categorical (2')

570 TAP phasic alertness - Without warning sound - Reaction time

571 TAP phasic alertness - With warning sound - Reaction time

572 TAP phasic alertness - Alertness index

573 TAP sustained attention - Item omissions

574 TAP sustained attention - False alarm

575 TAP divided attention - Audio condition - Reaction time

576 TAP divided attention - Visual condition - Reaction time

577 TAP divided attention - Total omissions

578 TAP divided attention - Total false alarms

579 TAP Incompatibility task - Visual fields * Hands score

580 BECLA - Semantic image matching

581 BECLA - Semantic word matching

Long COVID-19 and cognition

- 582 BECLA - Object and action image naming
- 583 BECLA - Word repetition
- 584 BECLA - Nonword repetition
- 585 Evaluation of gestural praxis - Symbolic gestures
- 586 Evaluation of gestural praxis - Action pantomimes
- 587 Evaluation of gestural praxis - Meaningless gestures
- 588 VOSP - Fragmented letters
- 589 VOSP - Object decision
- 590 VOSP - Number localization
- 591 VOSP - Cubic counting
- 592 WAIS IV - Puzzle
- 593 WAIS IV - Matrix
- 594 GERT – Emotion recognition task
- 595 Anosognosia - Memory functions
- 596 Anosognosia - Executive functions - Working memory
- 597 Anosognosia - Executive functions - Inhibition
- 598 Anosognosia - Executive functions - Flexibility