

11 **Abstract**

12 **Background:** Previous research has shown that the slope of the electroencephalography (EEG) power
13 spectrum mediates the difference between older and younger adults on a visuo-spatial working memory
14 task. The present study sought to replicate and extend that work using a larger sample and a validated
15 set of neuropsychological tests: The Repeatable Battery for the Assessment of Neuropsychological
16 Status (RBANS).

17 **Methods:** Forty-four participants (21 younger adults, 23 older adults) completed a battery of cognitive
18 and motor tasks that included the RBANS. EEG data were collected both during rest and on-task.
19 Excluding the alpha-band, RBANS scores were regressed onto the slope of the resting EEG power
20 spectrum, controlling for age and using robust mediation analysis.

21 **Results:** Older adults performed reliably lower on the RBANS composite and the Coding, List Recall, List
22 Recognition, and Figure Recall subtests. However, boot-strapped mediation models only showed a
23 mediating effect of the spectral slope on RBANS composite and the Coding subtest.

24 **Conclusions:** The resting slope of the EEG power spectrum mediated age-related differences in cognition
25 in the current study, which replicates prior work and is consistent with the neural noise hypothesis of
26 aging. In extending this work, it was shown that these effects are strongest in tasks requiring speeded
27 processing and/or executive functions, whereas this effect was weaker (to absent) for delayed memory,
28 even though age-related differences were present. This pilot study warrants further exploration of the
29 EEG power spectrum in age-related cognitive decline.

30

31 **Relating resting EEG power spectra to age-related changes in cognitive performance: An observational**
32 **pilot study.**

33 Voytek and colleagues (2015) showed that the slope of the resting EEG power spectrum
34 mediated age-related differences in a visuospatial working memory task in a cross-sectional study of
35 younger and older adults. Older adults were less accurate and slower in completing a task that required
36 them to briefly study an array of stimuli and then, following a delay, indicate whether a new set of
37 stimuli was the same or different from the previous set. Additionally, the older adults showed flatter
38 spectral slopes at rest than the younger adults, a finding consistent with the neural noise hypothesis of
39 aging (Voytek & Knight, 2015). That is, flatter spectral slopes are closer to “white noise”, a random signal
40 with an equal power at each frequency. Thus, flatter slopes for older adults suggest an imbalance in low-
41 frequency power compared to younger adults, which may reflect a reduced signal-to-noise ratio in
42 neural processing. Critically, the spectral slopes also mediated the relationship between age and
43 cognitive performance. Thus, those data are strongly suggestive that aging led to neurophysiological
44 changes (reflected in the spectral slope) that led to worse performance in a visuospatial working
45 memory task.

46 Although these data are exciting, there are a number of limitations we need to consider when
47 generalizing the results of Voytek et al (2015). First, the sample size was limited (n=11 younger adults
48 and n=13 older adults), which is appropriate for the first study of its kind, but needs to be expanded to
49 improve generalizability. Second, cognition was only assessed via a single laboratory test of visuospatial
50 working memory, and a broader view of cognition is warranted. While this finding is promising, the
51 relevance of a tightly constrained visuospatial working memory task to cognitive performance in daily
52 life is not clear. As such, our primary motivation in the current study was to recruit a larger sample of
53 participants and conceptually replicate the findings of Voytek et al., but using a larger battery of
54 clinically validated cognitive tests. Thus, similar to Voytek et al., 2015, our primary hypothesis was that

55 the slope of the EEG power spectrum (collected at rest), would mediate age-group difference in
56 performance on different subtests of the RBANS. Before discussing the methods in detail, however, is
57 worth spending some time discussing the slope of the EEG power spectrum, how it was operationally
58 measured in this experiment, and what it may physiologically represent.

59

60 **A Brief Explanation of the Spectral Slope (also called Inverse Frequency Noise)**

61 Inverse frequency ($1/f$) noise is a common finding in many biological, physical, and even social
62 systems (Ward & Greenwood, 2007). We can think of $1/f$ noise as any pattern where low frequencies
63 have the most power in the signal, and power decreases at higher frequencies; that is, there is a
64 negative relationship between power and frequency, as is common in human EEG (Cohen, 2014; Luck,
65 2014). More broadly, however, $1/f$ noise simply refers to a relationship that can be approximated by:

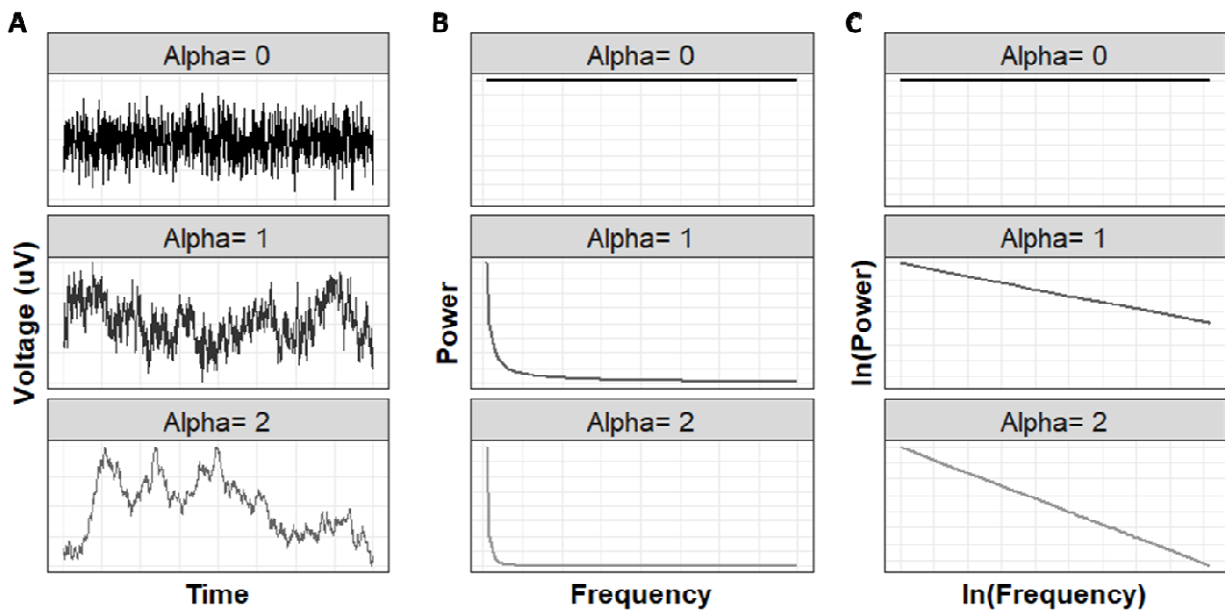
$$66 \quad (\text{Eq. 1.}) \quad P \sim \frac{k}{f^\alpha},$$

67 where the power in a signal (P) is inversely proportional to the frequency ($1/f$), with this
68 proportionality determined by a decay parameter (α) and a constant (k). When transformed into log-log
69 space, this relationship becomes a linear function:

$$70 \quad (\text{Eq. 2.}) \quad \ln(P) = \ln(k) - \alpha * \ln(f),$$

71 such that power in the signal monotonically decreases as the frequency increases, as shown in
72 Figure 1. Many systems show this proportionality (with some relabeling of terms) from geology
73 (Holliger, 1996), to music (Voss & Clarke, 1975), to human cognition (Gilden et al., 1995; Wagenmakers
74 et al., 2004). For our purposes, we will focus on this $1/f$ pattern in the power spectrum for surface EEG.
75 In human EEG, a large proportion of the signal follows a broad-band $1/f$ pattern, with deviations away
76 from pattern in the canonical frequency bands (e.g., alpha, beta, delta) that are related to specific
77 psychological states or processes (e.g., Linkenkaer-Hansen et al., 2001; Poil et al., 2013).

78



79

80 **Figure 1.** Three different time-series of hypothetical electrophysiological data. (A) Voltages are shown
81 over time. (B) Following a fast Fourier transform, an exponential function (—) is fit to the raw
82 power spectrum. (C) By log-transforming the Power and the Frequency of the power spectrum, we can
83 now approximate this relationship with a linear function (—). These
84 transformations are shown for three different cases where the value of the α exponent changes from 0
85 (shown in black, representing “white” noise), to 1 (shown in dark grey, representing “pink” noise), to 2
86 (shown in light grey, representing Brownian or “red” noise).

87

88

89 The ubiquity of $1/f$ noise makes it an intriguing puzzle for both mathematicians and applied
90 researchers. However, simply because a pattern is prevalent across many systems does not mean those
91 system share underlying properties. That is, although patterns of earthquakes and neural oscillations
92 have similar features, their etiology is clearly different. In the brain, there is evidence this $1/f$ pattern
93 may emerge passively, from anatomical features of the brain, skull, scalp, etc., which act as filters
94 (Bédard et al., 2006). These anatomical factors would explain why there are strong individual differences
95 in the resting EEG power spectrum (e.g., Pathania et al., 2021) and why the power spectrum changes
96 over the lifespan (e.g., as the brain and skull change during development; Voytek et al., 2015). As such,
97 this $1/f$ pattern to the power spectrum is often thought of as noise—it is a background signal that needs
98 to be controlled for, allowing us to focus on changes in narrow-band power that reflect specific
99 psychological and neurological functions (e.g., detrended fluctuation analysis; Cohen, 2014; Hardstone
100 et al., 2012).

101 A view of the $1/f$ component of the power spectrum as a background signal that underlies
102 changes in narrow-band power is largely correct; certainly, changes in $1/f$ appear to happen on a much
103 slower timescale than changes in narrow-band power (e.g., months and years compared to seconds and
104 milliseconds; Cohen, 2014). However, studies have shown that $1/f$ noise in the EEG power spectrum can
105 actually change on the order of hours (e.g., in a sleep deprivation study; Meisel et al., 2017) or minutes
106 (e.g., in a videogame task; Pathania et al., 2021). Furthermore, differences in the $1/f$ component of the
107 EEG power spectrum can actually predict the presence of psychosis (Peterson et al., 2017) and individual
108 differences in working memory (Voytek et al., 2015). As such, it is potentially misleading to refer to the
109 $1/f$ component as “noise.” Rather, it is a slowly changing, tonic signal. When our interest is in rapid,
110 phasic signals, we might justifiably treat the $1/f$ signal as noise, but it is important to recognize that it is
111 a signal in itself (Cohen, 2014).

112 As such, we will hereafter refer to $1/f$ noise as the “spectral slope”. Indeed, as shown in Eq. 2.,
113 we define this term as a slope (the α term) when the power spectrum is plotted in log-log space. Other
114 researchers have similarly redefined the $1/f$ component as the aperiodic slope (Donoghue et al., 2020),
115 but that formulation uses a different method of estimation than we use below, so we will use the term
116 spectral slope.

117

118 **Methods**

119 **Participants**

120 Forty-nine participants were recruited for the study: healthy young adults (YA; <35y; n=22);
121 cognitively healthy older adults (OA; >59y; n=24); and older adults with mild cognitive impairment (MCI;
122 n = 3) following approval of the University Institutional Review Board. We originally planned to recruit a
123 comparable sample of older adults with amnesic MCI, which is considered a prodrome of Alzheimer’s
124 disease (Levey et al., 2006). This sample would allow for comparison of neurological changes between
125 neurologically healthy older adults and those with MCI. Due to the onset of COVID-19 during data
126 collection, however, we had to postpone data collection in older adults with MCI as a safety precaution.
127 Nevertheless, we hit our target sample sizes for healthy younger adults and healthy older adults, which
128 are sufficient for the replication of Voytek et al. (2015). Thus, we are able to fulfill our primary aim
129 focused on cognitively intact younger and older adults with the current sample.

130 Following informed consent, participants completed a demographic survey, wherein they self-
131 reported their education status, handedness, current medical status, and physical activity status. Older
132 adults also self-reported their concurrent medications and sleep quality using The Pittsburgh Sleep
133 Quality Index (PSQI), but these data we not obtained for younger adults.

134 Participants over 18 were recruited and did not have any impairments that would limit the
135 function of their arms, hand, or legs. Participants were recruited from the local community by flyers and

136 word of mouth recruitment. Older adults specifically were also recruited through a participant database
137 maintained by the Center on Aging at the University of Utah. Participants with MCI were recruited from
138 an ongoing study by one of the coauthors (KD), a licensed neuropsychologist, who also provided their
139 diagnosis for amnesic MCI. Participants were excluded if they had any self-reported musculoskeletal,
140 neurological, or perceptual impairments that they thought would affect their performance in these
141 tasks, or any history of skin allergies (as a precaution for EEG data collection). In addition, participants
142 were excluded if they had any medical history of severe cognitive impairment (e.g., dementia) or
143 psychiatric conditions (e.g., severe depression, bipolar disorder, substance abuse).

144 **Tasks and Measures**

145 Participants completed a battery of cognitive and motor tasks: the RBANS to assess cognition, a
146 maximum grip-force task, a simulated feeding task (Schaefer et al., 2015; Schaefer & Hengge, 2016), and
147 a sensorimotor test of standing balance. A brief description of each task is provided below to give the
148 full context of the experiment. However, for the purposes of replicating the findings of Voytek et al.
149 (2015), the current study focuses only on the resting EEG data and the behavioral data from the RBANS.

150 ***Cognitive Assessment***

151 **RBANS:** This individually-administered, paper and pencil battery has been validated to assess
152 cognitive function in adults ages 20-89 (Randolph, 1998; 2012). It is a reliable and valid assessment of
153 cognitive status for detecting dementia (Duff et al., 2008), discriminating among individual differences in
154 healthy older adults (England et al., 2014; Patton et al., 2003), and in similarly aged clinical populations
155 (Larson et al., 2005). Furthermore, there is good evidence of convergent validity to show that RBANS
156 scores are associated with instrumental activities of daily living (Freilich & Hyer, 2007; Larson et al.,
157 2005). The RBANS consists of 12 subtests that load onto 5 indices of cognition: immediate memory,
158 visuospatial/constructional ability, language, attention, and delayed memory. To ensure consistency of
159 administration and scoring, all tests were administered and scored by the same author, AP. Although

160 age-corrected normative data is available, we elected to use non-age-corrected raw scores for the 12
161 subtests so that we could compare age-groups on their absolute performance (rather than performance
162 relative to age-matched peers).

163 ***Motor Assessments***

164 **Maximum Grip Force Task:** The maximum grip-force task was administered to provide a
165 measurement of basic neuromuscular function. To measure maximal isometric grip-force and grip-force
166 variability, a Biopac® TSD121C hand-grip dynamometer was used (amplified through a Biopac MP160).
167 Maximum grip force was recorded over 3x 4-second trials, the mean force measured during the force
168 plateau was recorded, and the mean of these three means served as our measure of average maximum
169 grip force. Electromyography (EMG) surface electrodes were placed on the wrist extensors and flexors
170 to record electrical activity during the grip-force task.

171 **Simulated Feeding Task (SiFT):** The next motor task administered was the simulated feeding
172 task (Schaefer et al., 2020; Schaefer & Hengge, 2016). This task has been validated in older adults and
173 reflects participants' ability to perform visually guided control of the arm and hand (Schaefer & Hengge,
174 2016), but has also been associated with cognitive function (Hooyman et al., 2021; Schaefer et al.,
175 2020).

176 **Sensory Motor Integration Task:** Participants completed a sensory organization test as a
177 measure of standing balance, modified from the Clinical Test of Sensory Interaction on Balance
178 (Freeman et al., 2018).

179 **EEG Processing and Aggregation**

180 Scalp EEG was collected from a 32-channel actiCAP active electrode system housed in a 64-
181 channel cap and amplified with a BrainAmp DC amplifier (BrainProducts GmbH). The electrodes were
182 labelled in accordance with the standard 10-10 geodesic montage (Oostenveld & Praamstra, 2001). The
183 specific electrode sites included, Fp1, Fz, F3, F7, FT9, FC5, FC1, C3, T7, TP9, CP5, CP1, Pz, P3, P7, O1, Oz,

184 O2, P4, P8, TP10, CP6, CP2, Cz, C4, T8, FT10, FC6, FC2, F4, F8, and Fp2. The data were online referenced
185 to the right ear, with a common ground on the left ear. The electrode impedances were maintained
186 below 25kΩ, with a sampling frequency of 1000Hz.

187 EEG data processing was conducted with the BrainVision Analyzer 2.1.2 software (BrainProducts
188 GmbH). No online filters were applied, but offline the data were band-pass filtered between 0.1 and 40
189 Hz with 24-dB rolloffs with a 60 Hz notch filter. The data were manually inspected, and eyeblinks marked
190 for ICA-based ocular correction within BrainVision Analyzer software (BrainProducts 2013). This function
191 was run with the FP2 electrode serving as the VEOG and the HEOG electrode. Using Welch's method,
192 the data were epoched in 1-s segments, which overlapped by 50%. Following that, segments with
193 artifacts were removed (average of 93% segments retained per person, SD = 17.28%). The remaining
194 segments were subjected to a fast Fourier transformation using 0.977 Hz bins and a Hamming window
195 with a 50% taper (Welch, 1967). The data were then truncated between 2-32 Hz to exclude gamma-
196 band power¹ and higher frequency muscle activation and were then averaged within sets of electrodes
197 to get the average power spectrum in each region (Frontal: F7, F3, Fz, F4, F8; Central: C3, Cz, C4;
198 Parietal: P7, P3, Pz, P4, P8; and Occipital: O1, Oz, O2). Finally, the alpha band (8-12 Hz) was excluded to
199 remove the major periodic component from the signal, improving the linear fit of the statistical model
200 and isolating the spectral slope (see Voytek et al., 2015).

201 **Statistical Analysis**

202 Following truncation of the power spectrum and the exclusion of the alpha bandwidth, we used
203 mixed-effects regression to fit the power spectrum for each participant and model the effects of age
204 (Bates et al., 2014). To account for the within-subject nature of the power-spectra, we included random

¹ Note that Voytek et al. (2015) restricted their data to 2-25 Hz. We selected 2-32 Hz to be more inclusive of the beta frequency band. Rerunning our analyses restricted to 2-25 Hz leads to a qualitatively similar pattern of results for both the effect of age and the mediation analyses that are presented below. All aggregated data and code are shared at https://github.com/keithlohse/spectral_slopes_aging, so interested readers can test the robustness of these results using different frequency cutoffs.

205 slopes and intercepts, with fixed-effects of Frequency (2-32 Hz), Region (Frontal, Central, Parietal, and
206 Occipital), Age Group (younger adults versus older adults), and the interactions between these terms.

207 To assess age-group differences in cognitive performance, we used independent samples t-tests
208 to compare performance on the raw RBANS scores between age groups. A priori, we chose to conduct
209 one-tailed tests as past data strongly suggest that older adults should generally score worse than
210 younger adults. First, we tested the effect of age group for RBANS composite scores, calculated from the
211 percentage of the total sub-score on each subtest.² As this difference was statistically significant, we
212 subsequently compared older to younger adults on each subtest of the RBANS. This creates a
213 multiplicity of t-tests, which increases the Type-I error rate of the experiment. However, we conducted
214 multiple tests for two reasons: (1) in this pilot study, we reasoned that the cost of a false negative error
215 was greater than the cost of a false positive error and (2) only the subtests that statistically differed
216 between conditions were selected for subsequent mediation analyses.

217 Finally, we used mediation analysis with non-parametric bootstrapping to assess the mediating
218 effect of the spectral slope on age-related declines in cognition (Imai et al., 2010; Tingley et al., 2014). A
219 *priori*, we chose to focus on the spectral slopes from the frontal electrodes only, reflecting our interest
220 in higher cognitive function. The slopes were extracted from the mixed-effects models (one frontal slope
221 value for each participant) and then used as a mediator in a series of regression models. Cognitive test
222 performance was regressed onto age group, the spectral slope was regressed onto age group, and
223 cognitive test performance was regressed onto age group and the spectral slope. Using k=5,000
224 iterations, these models were bootstrapped to estimate the total effect, the average direct effect, and
225 the average causal mediation effect. (We use the term causal here by convention, but we would
226 discourage a strictly causal interpretation of this association, as discussed below.)

² Note that this is a departure from the way RBANS scores are normally analyzed, which requires age-normalizing the scores. Because our planned analyses require us to test the effect of age and then its (potential) mediation, we chose not to age-normalize the RBANS scores. Thus, we focus on raw scores (when exploring individual RBANS subtests) or the percent-RBANS composite score (when exploring cognitive status on average across subtests).

227

228

Results

229 Demographics

230

Forty-nine participants were recruited from within the university and the larger community.

231

However, due to a data storage issue, we lost EEG data for one YA participant, bringing our total YA n =

232

21, and one OA participant, bringing our total OA n = 23. Demographic statistics for these participants

233

are shown in Table 1. Data from the N=3 older adults with MCI were too limited to include in statistical

234

analyses. All subsequent analyses are based on the N=44 cognitively intact older and younger adults.

235

236 **Table 1.** Summary statistics for the participant demographic surveys.

Variable	Younger Adults	Older Adults
Participants (n)	21	23
Age, mean (SD)	23.29(3.47)	70.83(5.77)
Age, range	19, 33	59, 83
Male (n)	11	4
Education level (years), mean (SD)	14.93 (1.58)	15.45(2.61)
# of Current Medications	<i>Not Collected</i>	1 to 23
No. of medications, mean (SD)	<i>Not Collected</i>	5.55(5.26)
Average Maximum Grip Force (kgf)	20.5 (6.5)	12.4 (4.2)
Self-Reported Physical Activity		
Vigorous PA (Days per week)	2.98(1.75)	2.22(2.33)
Vigorous PA (Hours per day)	1.21(0.64)	0.87(0.91)
Moderate PA (Days per week)	3.67(1.72)	4.15(2.52)
Moderate PA (Hours per day)	1.42(0.83)	1.51(1.22)
Light PA (Days per week)	5.76(2.12)	5.43(2.42)
Light PA (Hours per day)	3.74(3.15)	2.91(2.08)
Resistance training (Days per week)	2.52(2.09)	1.17(1.59)
Sleep Quality, mean (SD)	<i>Not Collected</i>	5.33(3.57)

237 Note that details of medications taken and the Pittsburgh Sleep Quality Index were only added to the
238 study protocol after data collection in the younger adults was finished. As such, these data are only
239 available for the older adults.

240 **Age-Related Differences in EEG Power Spectra**

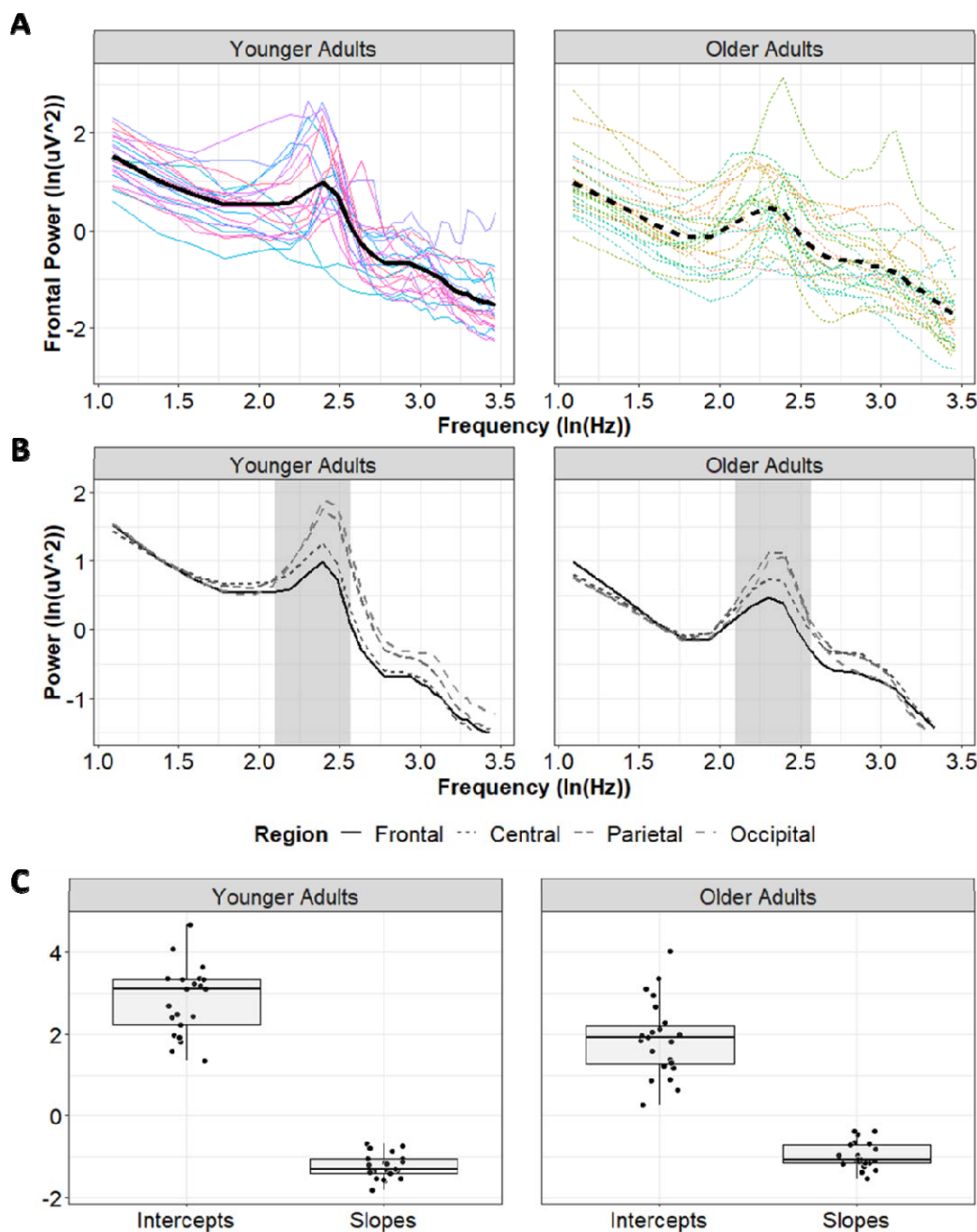
241 A linear mixed-effect regression model with fixed effects of Frequency, Region, Age Group, and
242 their interactions revealed main-effects of Frequency, $F(1,42)=580.3$, $p<0.001$, and Age Group,
243 $F(1,42)=14.1$, $p<0.001$, and interactions of Frequency x Region, $F(3,4124)=4.6$, $p=0.003$, and Frequency x
244 Age Group, $F(1,42)=7.3$, $p=0.009$. However, these effects were superseded by a Frequency x Age Group x
245 Region interaction, $F(3,4124)=7.4$, $p<0.001$. See Figure 2. To unpack this three-way interaction, we
246 created smaller models within each age group and within each region. All models had random-effects
247 for both the intercept and the slope (i.e., effect of Frequency).

248 Within the younger adults, there was a statistically significant effect of Frequency,
249 $F(1,20)=312.0$, $p<0.001$, Region, $F(3,1968)=3.7$, $p=0.011$, and a Frequency x Region interaction,
250 $F(3,1968)=15.2$, $p<0.001$. In contrast, older adults showed only a statistically significant effect of
251 Frequency, $F(1,22)=263.6$, $p<0.001$. However, neither the main-effect of region, $F(3,2156)=0.1$, $p=0.935$,
252 nor the Frequency x Region interaction, $F(3,2156)=0.4$, $p=0.785$, were statistically significant. This
253 difference in the Frequency x Region interactions suggests that younger adults had greater regional
254 differentiation in the spectral slope compared to older adults, who showed more similar slopes across
255 regions. See Figure 2C.

256 With regard to the analyses of effects within region, results indicated that in the frontal region,
257 as a group, older adults showed both lower intercepts ($b=1.86$, $t(42)=-3.5$, $p<0.001$) and flatter slopes
258 ($b=-0.95$, $t(42)=3.0$, $p=0.006$) than younger adults (intercept: $b=2.86$, $t(42)=14.1$, $p<0.001$; slope: $b=-1.25$,
259 $t(42)=-17.5$, $p<0.001$). In the central region, older adults showed both lower intercepts ($b=1.86$, $t(42)=-$
260 $t(42)=-3.8$, $p<0.001$) and flatter slopes ($b=-0.92$, $t(42)=3.6$, $p<0.001$) than younger adults (intercept:
261 $b=3.0$, $t(42)=14.3$, $p<0.001$; slope: $b=-1.3$, $t(42)=-18.0$, $p<0.001$). In the parietal region, older adults
262 showed both lower intercepts ($b=1.95$, $t(42)=-3.7$, $p<0.001$) and flatter slopes ($b=-0.97$, $t(42)=2.5$,

263 $p=0.014$) than younger adults (intercept: $b=2.95$, $t(42)=15.2$, $p<0.001$; slope: $b=-1.22$, $t(42)=-18.3$,
264 $p<0.001$).

265 This pattern was slightly different in the occipital region, where older adults showed lower
266 intercepts ($b=1.87$, $t(42)=-2.7$, $p=0.010$), but not reliably flatter slopes ($b=-0.97$, $t(42)=1.0$, $p=0.324$) than
267 younger adults (intercept: $b=2.68$, $t(42)=12.5$, $p<0.001$; slope: $b=-1.07$, $t(42)=-16.2$, $p<0.001$). Thus, as
268 suggested by the Frequency x Age Group x Region interaction, older adults generally showed lower
269 intercepts and flatter slopes, but the strength of this effect varied across regions.
270



271

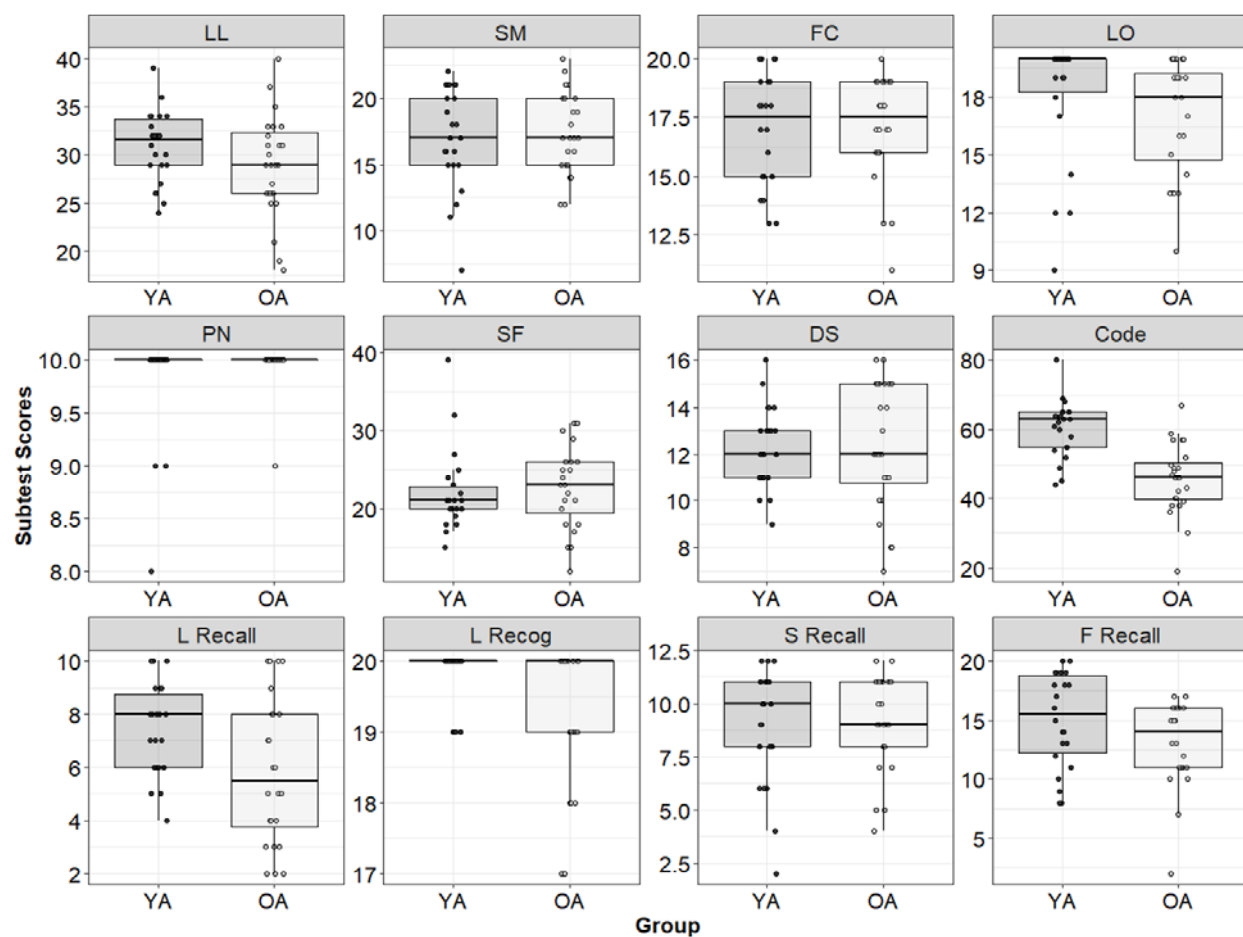
272 **Figure 2.** (A) Average power spectra across the frontal electrodes (F7, F3, Fz, F4, F8) as function of group,
273 shown in log-log space. Thin colored lines show individuals, thicker black lines show the average power
274 spectra for the whole group (line dashing varies with group). (B) Average power spectra in log-log space
275 shown as a function of group and electrode region (Frontal, Central, Parietal, and Occipital). Note that
276 the alpha band (8-12 Hz) is shaded in grey to indicate that frequencies in this range were excluded from
277 statistical analyses. (C) Slopes and intercepts from the mixed-effect regression for the frontal electrodes
278 as a function of group. Boxplots show the median and the interquartile range, whiskers are drawn to the
279 last point within 1.5*interquartile range.

280

281 **Age-Related Differences in Cognition**

282 As shown in Figure 3, there was considerable variability both within and between groups on the
283 different subtests of the RBANS. Statistical comparisons between the younger adults and older adults
284 are presented in Table 2. For RBANS composite scores there was a statistically significant difference
285 between younger and older adults ($p=0.034$), with older adults performing worse. Delving into the
286 specific subtests of the RBANS, only Coding ($p<0.001$), List Recall ($p=0.008$), List Recognition ($p=0.006$),
287 and Figure Recall ($p=0.045$) showed statistically significant differences.

288



289

290 **Figure 3.** RBANS subtest scores for each separate test as a function of group. LL = List Learning; SM =
291 Story Memory; FC = Figure Copy; LO = Line Orientation; PN = Picture Naming; SF = Semantic Fluency; DS
292 = Digit Span; Code = Coding; L Recall = List Recall; L Recog = List Recognition; S Recall = Story Recall; F
293 Recall = Figure Recall.

Table 2. Descriptive statistics and comparisons between younger adults and older adults on the different RBANS subtests.

RBANS Subtest	Younger Adults (n=21)		Older Adults (n=23)		p-value	
	Mean (SD)	95% CI	Mean (SD)	95% CI		
RBANS Composite (%)	78.8 (7.7)	[75.3, 82.3]	74.5 (7.7)	[71.2, 77.8]	0.034	*
List Learning (max = 40)	31.0 (3.8)	[29.3, 32.7]	28.9 (5.4)	[26.6, 31.2]	0.071	
Story Memory (max = 24)	16.7 (3.8)	[14.9, 18.4]	17.3 (3.0)	[16.0, 18.7]	0.742	
Figure Copy (max = 20)	17.0 (2.2)	[16.2, 18.2]	17.1 (2.3)	[16.1, 18.2]	0.440	
Line Orientation (max = 20)	18.0 (3.3)	[16.5, 19.6]	16.9 (3.0)	[15.6, 18.2]	0.121	
Picture Naming (max = 10)	9.8 (0.5)	[9.6, 10.0]	10.0 (0.2)	[9.9, 10.0]	0.885	
Semantic Fluency (max = 40)	22.1 (5.3)	[19.7, 24.5]	22.6 (5.2)	[20.4, 24.9]	0.615	
Digit Span (max = 16)	12.2 (1.7)	[11.4, 13.0]	12.3 (2.8)	[11.1, 13.5]	0.590	
Coding (max = 89)	60.6 (8.8)	[56.6, 64.5]	45.1 (10.2)	[40.7, 49.5]	<0.001	*
List Recall (max = 10)	7.6 (1.7)	[6.8, 8.3]	5.8 (2.8)	[4.6, 7.0]	0.008	*
List Recognition (max = 20)	19.9 (0.4)	[19.7, 20.0]	19.3 (1.0)	[18.8, 19.7]	0.006	*
Story Recall (max = 12)	8.9 (2.8)	[7.6, 10.2]	9.1 (2.3)	[8.1, 10.1]	0.593	
Figure Recall (max = 20)	15.0 (4.1)	[13.2, 16.9]	13.0 (3.6)	[11.4, 14.6]	0.045	*

Note that p-values refer to one-tailed hypothesis tests using Welch's t-test for independent samples, based on the *a priori* assumption that older adults should score lower on the raw RBANS subtests relative to younger adults. Only the younger and older adults were statistically compared, given the limited sample size for older adults with mild cognitive impairment (MCI). All subtests are presented in their raw units except for the RBANS composite, in which scores were converted to percentages for their respective subtests and then averaged together within a participant.

Does the spectral slope mediate age-related changes in cognition?

Spectral slopes from the frontal region were extracted for younger and older adults for inclusion in the mediation analyses. As shown in Figure 4, *a priori* we chose to focus only on those effects that showed the largest (statistically significant) differences between younger and older adults: RBANS composite scores, Coding, List Recall, List Recognition, and Figure Recall. Similarly, we focused only on the spectral slope estimated in the frontal electrodes. The results of the casual mediation analysis for each of the five significant outcome measures are provided below. These mediations were based on a non-parametric bootstrapping procedure with $k=5,000$ iterations to obtain robust estimates (Imai et al., 2010; Tingley et al., 2014).

RBANS Composite Scores. As shown in Figure 5A, age group was negatively associated with the RBANS composite scores. When frontal slopes were added into the model, this relationship was attenuated (from $b=4.34$ to $b'=2.16$) and the relationship between RBANS composite scores and frontal slopes was statistically significant ($b=-8.31$). Nonparametric bootstrapping of the mediation effect revealed an average causal mediation effect that was statistically significant, 2.18, 95% CI=[0.02, 5.60], $p=0.045$. However, the average direct effect of age group was not statistically significant, 2.16, CI=[-2.34, 6.53], $p=0.382$, nor was the total effect, 4.34, CI=[-0.06, 8.75], $p=0.053$.

Coding Subtest. As shown in Figure 5B, age group was strongly associated with Coding scores when entered into the model by itself (with younger adults scoring better than older adults). When frontal slopes were added into the model, this relationship was attenuated (from $b=15.42$ to $b'=12.47$) and the relationship between Coding and frontal slopes was itself statistically significant ($b=-10.86$). Nonparametric bootstrapping of the mediation effect revealed an average causal mediation effect of 2.95, 95% CI=[0.35, 6.69], $p=0.020$. The average direct effect of age group remained statistically significant, 12.47, CI=[5.89, 18.99], $p<0.001$. The total effect, which combines the direct effect of age

group with the variance in age group that was mediated by spectral slope, was also statistically significant, 15.42, CI=[9.66, 21.00], $p < 0.001$.

List Recall Subtest. As shown in Figure 5C, age group was strongly associated with List Recall scores when entered into the model by itself (with younger adults scoring better than older adults). When frontal slopes were added into the model, this relationship was attenuated (from $b=1.74$ to $b'=1.25$). The relationship between List Recall and frontal slopes was negative, but not statistically significant ($b=-1.87$). Nonparametric bootstrapping of the mediation effect revealed an average causal mediation effect that was not statistically significant, 0.49, 95% CI=[-0.10, 1.43], $p=0.116$. The average direct effect of age group was also not statistically significant, 1.25, CI=[-0.25, 2.56], $p=0.102$. The total effect, however, was statistically significant, 1.74, CI=[0.41, 3.04], $p=0.011$.

List Recognition Subtest. As shown in Figure 5D, age group was strongly associated with List Recognition scores when entered into the model by itself (with younger adults scoring better than older adults). When frontal slopes were added into the model, this relationship was attenuated (from $b=0.60$ to $b'=0.52$). The relationship between List Recognition and frontal slopes was negative, but not statistically significant ($b=-0.28$). Nonparametric bootstrapping of the mediation effect revealed an average causal mediation effect that was not statistically significant, 0.07, 95% CI=[-0.12, 0.30], $p=0.446$. However, the average direct effect of age group was statistically significant, 0.52, CI=[0.09, 0.99], $p=0.017$, as was the total effect, 0.60, CI=[0.18, 1.05], $p=0.004$.

Figure Recall Subtest. As shown in Figure 5E, age group was negatively associated with Figure Recall scores. When frontal slopes were added into the model, this relationship was attenuated (from $b=2.05$ to $b'=1.33$) and the relationship between Figure Recall scores and frontal slopes was negative, but not statistically significant ($b=-2.72$). Nonparametric bootstrapping of the mediation effect revealed an average causal mediation effect that was not statistically significant, 0.72, 95% CI=[-0.21, 2.04],

$p=0.146$. The average direct effect of age group was also not statistically significant, 1.33, $CI=[-1.00, 3.49]$, $p=0.258$, nor was the total effect, 2.05, $CI=[-0.26, 4.28]$, $p=0.079$.

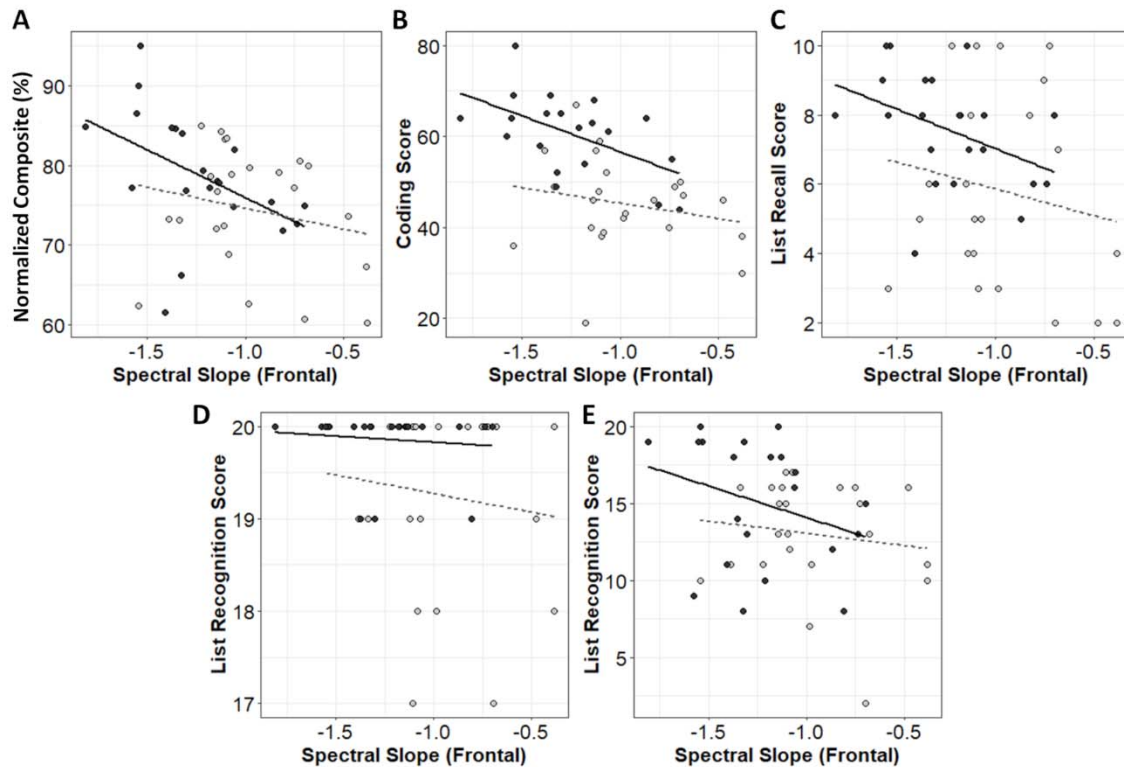


Figure 4. RBANS composite scores (A), Coding (B), List Recall (C), List Recognition (D), and Figure Recall subtest scores (D) as a function of the spectral slope across the frontal electrodes (estimated excluding alpha band power [8-12 Hz]). These subtests were selected for the statistically significant differences between younger (YA) and older adults (OA) shown in Table 2. Lines indicate the ordinary least squares regression line within each group.

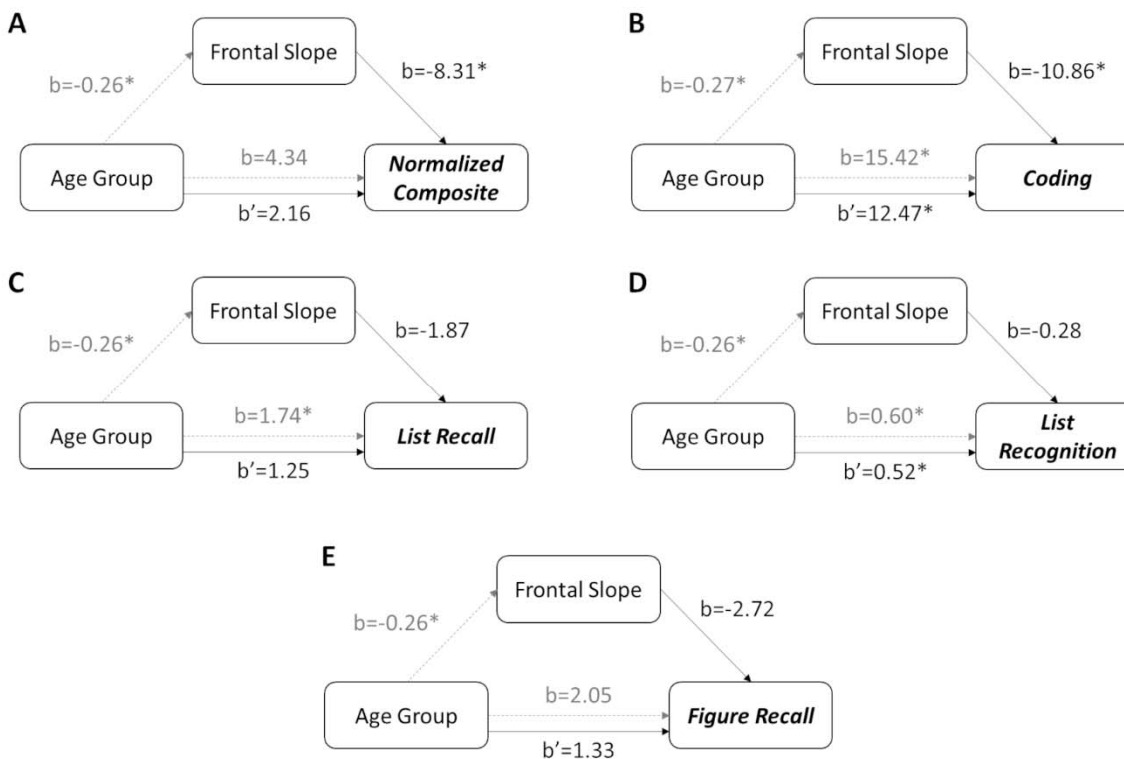


Figure 5. Mediation pathways for RBANS composite scores as a % across the RBANS (A), Coding (B), List Recall (C), List Recognition (D), and Figure Recall (E) subtest scores. Estimates are shown from ordinary least squares regression models for each pathway. Grey dashed lines and grey text reflect simple regressions and coefficients. Black lines and text reflect multiple regression with outcomes (A-E) explained by both Age Group and the estimated Spectral Slope in the frontal electrodes (averaging F7, F3, Fz, F4, and F8). Note the Frontal Slope~Age Group path is slightly different for Coding scores, because the Coding score was missing for one YA participant due to an administration error. Asterisks indicate $p < 0.05$.

Discussion

Consistent with the neural-noise hypothesis of aging, and in replication of Voytek et al. (2015), our data showed that (1) the slope of the resting EEG power spectrum is flatter in older compared to younger adults and (2) individual differences in the slope of the EEG power spectrum mediated age-related differences in cognition. However, it is important to note that this pattern was not evident across all subtests of the RBANS. The effect appeared to be strongest in the Coding subtest, and was potentially present in the RBANS composite scores, List Recall, List Recognition, and Figure Recall. Other subtests of the RBANS were not examined, as we did not find reliable evidence of cognitive differences between the performance of younger adults and older adults. Thus, combining these data with those of Voytek et al. (2015), it appears that the flattening of the spectral of slope with age is a reliable effect. Further, the spectral slope is related to cognition in both tightly controlled laboratory tasks (visuospatial working memory in the case of Voytek et al.) and in ecologically valid clinical tests (the Coding subtest of the RBANS in the present data).

The obtained pattern of results raises important questions about how the findings pertaining to Coding subtest of the RBANS should be interpreted. The Coding subtest falls under the “Attention” domain. Interestingly, the Digit Span is the other subtest in the Attention domain, and we failed to show a reliable difference between younger adults and older adults with respect to Digit Span scores. Ultimately, the reason for the strong association with the Coding subtest is not clear, but we posit a few possible (non-exclusive explanations). First, the Coding subtest has the strictest time requirements of any subtest on the RBANS, and is directly analogous to other symbol substitution tasks that are commonly used to assess the domain of processing speed in neuropsychology (Larrabee, 2017). To perform the task efficiently, participants need to memorize the correspondence between symbols presented on the paper and the numbers those symbols represent (i.e., a symbol-number pairing). As the task goes on, more efficient participants are able to encode the symbol-number pairings into

working memory, as opposed to repeatedly alternating between the symbol key and the response field. Thus, these tasks require the rapid integration of various sub-processes (much like the working memory task used in Voytek et al., 2015), including visual scanning, working memory, sustained attention, and visuomotor coordination, and quantify an individual's ability to rapidly learn, coordinate, and execute a set of simpler sub-tasks (Lezak et al., 2004).

A second, perhaps complementary, perspective on these measures highlights the importance of executive functions, via cognitive control and working memory, in allowing individuals to rapidly coordinate the necessary sub-processes when faced with a novel task and timed testing conditions (Koziol & Budding, 2009). Both of these perspectives are consistent with the large literatures that highlight: (1) the relative prominence of changes in the (interrelated) functions of processing speed, working memory, and fluid cognition with greater age (Salthouse, 2000; Salthouse & Davis, 2006), and (2) the effects of clinical conditions affecting distributed processing and/or white matter integrity on timed symbol-substitution tasks (e.g., DeLuca et al., 2004; Kinnunen et al., 2011; Lezak et al., 2004).

Interestingly, we did not find evidence for the spectral slope mediating age-related differences in delayed memory, as reflected in the non-significant mediations for List Recognition, List Recall, and Figure Recall. From these pilot data, we cannot conclude that there is no relationship between spectral slopes and delayed memory, but these data do suggest that the relationships for delayed memory are (at least) smaller than those observed for processing speed/executive functions. Again, however, this may also be confounded by the speed requirements of the RBANS; if participants were required to retrieve information from long-term memory very quickly, perhaps a reliable pattern would emerge. If that were the case, however, that would again suggest that resting spectral slopes are more related to processing speed than they are to long-term memory per se.

Finally, it is unfortunate that we were unable to collect data from our sample of older adults with MCI. The descriptive data for three participants are interesting, but far too limited to allow a

substantial qualitative interpretation. Based on the relationship between resting slopes and performance in cognitively intact older adults, however, we do think that these pilot data warrant further research into the clinical utility of the resting spectral slope as a biomarker of cognitive decline. We have shown the resting spectral slope is sensitive to individual differences in some aspects of cognition. Combined with past work showing how frequency-based EEG measures can longitudinally predict the conversion from MCI to Alzheimer's disease (Engedal et al., 2020; Poil et al., 2013), we think the present data warrant longitudinal studies to see if the spectral slope possibly outperforms other biomarkers, or if the predictive utility of other biomarkers is improved after the spectral slope is accounted for (Donoghue et al., 2020).

Limitations

There are a number of limitations in the present study of which we need to be cognizant. First and foremost, we have a limited sample size and we need to be careful in the interpretation of our hypothesis test results. Due to relatively low power in some analyses, significant results may not be representative of the real underlying effects, and non-significant results may have simply lacked adequate statistical power (Button et al., 2013; Lohse et al., 2016). Further, there were a number of processing choices in the handling of the EEG data that could have an effect on the results. For instance, as shown in Figure 2, the location of the alpha peak appeared to shift toward a lower frequency range from the younger adults to the older adults. As such, our decision to completely remove datapoints between 8-12 Hz as "the" alpha band is likely not trimming out alpha power equally for all participants. We could instead select individualized peaks for each person or adopt more sophisticated algorithmic methods (like "fitting oscillations with one-over-f"; Donoghue et al., 2020; Haller et al., 2018), but each of these methods would in turn require experimenter decisions that need to be justified. As such, we opted for the simple but objective criterion of simply removing data between 8-12 Hz (which is also

more consistent with Voytek et al., 2015). Additionally, we do suffer a multiple testing problem in examining age-group differences on all subtests of the RBANS. We fully acknowledge that this is a concern and the Type I (false positive) error rate is likely inflated. However, we would also argue that as a pilot study, the risk of Type II (false negative) errors is greater at this stage. Our goal was not to unequivocally test associations between these variables, but to attempt to replicate past work and generate confidence intervals for effects that will be helpful in planning future studies. Finally, although the RBANS does tap multiple cognitive domains, it does not have pure measures of executive functioning. Given the present results, future studies might examine if executive function specifically is influenced by age and spectral slope.

Conclusions

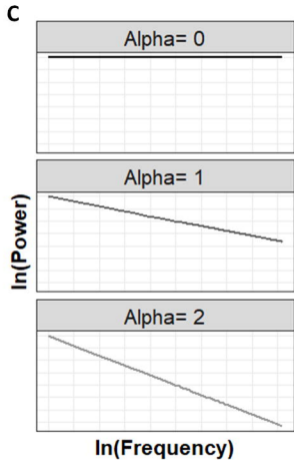
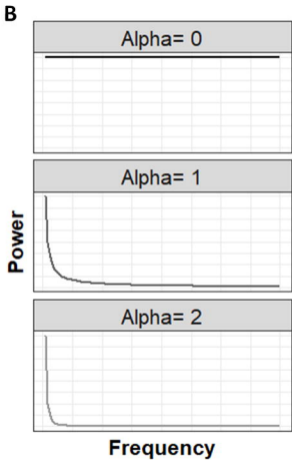
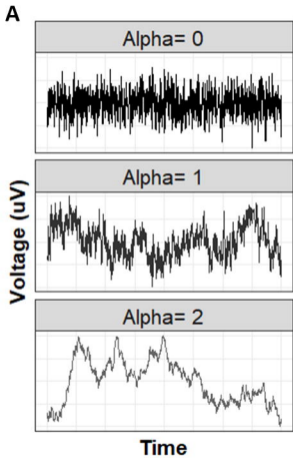
Consistent with the neural-noise hypothesis of aging, we replicated earlier work showing that the slope of the EEG power spectrum becomes flatter with age, and that individual differences in the spectral slope explain individual differences in cognition. We also extend this past work by demonstrating these effects in clinical assessments of cognitive status (rather than lab-based tasks) and show that these effects do not appear to be broadly applicable to all areas of cognition. These pilot data warrant the inclusion of the spectral slope as candidate biomarker in future studies on age-related cognitive decline.

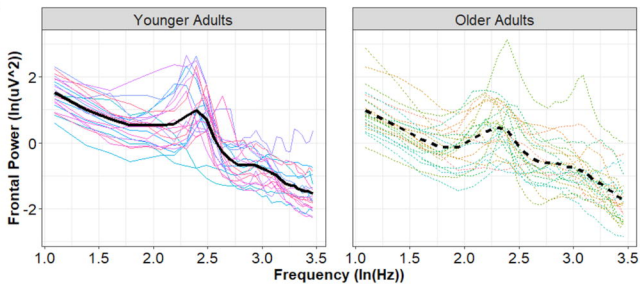
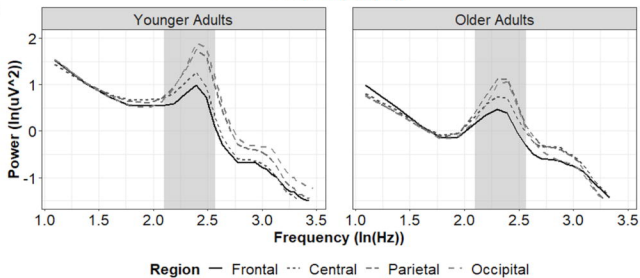
References

- Bates, D., Mächler, M., Bolker, B., & Walker, S. (2014). Fitting linear mixed-effects models using lme4. *ArXiv:1406.5823 [Stat]*.
- Bédard, C., Kröger, H., & Destexhe, A. (2006). Does the 1/f frequency scaling of brain signals reflect self-organized critical states? *Physical Review Letters*, *97*(11), 118102.
- Button, K. S., Ioannidis, J. P., Mokrysz, C., Nosek, B. A., Flint, J., Robinson, E. S., & Munafò, M. R. (2013). Power failure: why small sample size undermines the reliability of neuroscience. *Nature Reviews Neuroscience*, *14*(5), 365-376.
- Cohen, M. X. (2014). Analyzing neural time series data: theory and practice. MIT press.
- DeLuca, J., Chelune, G. J., Tulskey, D. S., Lengenfelder, J., & Chiaravalloti, N. D. (2004). Is speed of processing or working memory the primary information processing deficit in multiple sclerosis? *Journal of Clinical and Experimental Neuropsychology*, *26*(4), 550–562.
- Donoghue, T., Dominguez, J., & Voytek, B. (2020). electrophysiological frequency band ratio measures conflate periodic and aperiodic neural activity. *Eneuro*, *7*(6).
- Duff, K., Clark, H. J. D., O’Byrant, S. E., Mold, J. W., Schiffer, R. B., & Sutker, P. B. (2008). Utility of the RBANS in detecting cognitive impairment associated with Alzheimer’s disease: Sensitivity, specificity, and positive and negative predictive powers. *Archives of Clinical Neuropsychology*, *23*(5), 603–612.
- Engedal, K., Barca, M. L., Høgh, P., Bo Andersen, B., Dombernowsky, N.W., Naik, M., Gudmundsson, T. E., Øksengaard, A.R., Wahlund, L.O., & Snaedal, J. (2020). The power of EEG to predict conversion from mild cognitive impairment and subjective cognitive decline to dementia. *Dementia and Geriatric Cognitive Disorders*, *49*(1), 38–47.
- England, H. B., Gillis, M. M., & Hampstead, B. M. (2014). RBANS memory indices are related to medial temporal lobe volumetrics in healthy older adults and those with mild cognitive impairment. *Archives of Clinical Neuropsychology*, *29*(4), 322–328.
- Freeman, D. L., Gera, G., Horak, F. B., Blackinton, M. T., Besch, M., & King, L. (2018). The instrumented Test of Sensory Integration for Balance: a validation study. *Journal of Geriatric Physical Therapy* (2001), *41*(2), 77–84.
- Freilich, B. M., & Hyer, L. A. (2007). Relation of the Repeatable Battery for Assessment of Neuropsychological Status to measures of daily functioning in dementia. *Psychological Reports*, *101*(1), 119–129.
- Gilden, D. L., Thornton, T., & Mallon, M. W. (1995). 1/f noise in human cognition. *Science*, *267*(5205), 1837–1839.
- Haller, M., Donoghue, T., Peterson, E., Varma, P., Sebastian, P., Gao, R., Noto, T., Knight, R. T., Shestyuk, A., & Voytek, B. (2018). Parameterizing neural power spectra. *BioRxiv*, 299859.
- Hardstone, R., Poil, S.S., Schiavone, G., Jansen, R., Nikulin, V. V., Mansvelder, H. D., & Linkenkaer-Hansen, K. (2012). Detrended fluctuation analysis: a scale-free view on neuronal oscillations. *Frontiers in Physiology*, *3*, 450.

- Holliger, K. (1996). Fault scaling and 1/f noise scaling of seismic velocity fluctuations in the upper crystalline crust. *Geology*, 24(12), 1103–1106.
- Hooyman, A., Malek-Ahmadi, M., Fauth, E. B., & Schaefer, S. Y. (2021). Challenging the relationship of grip strength with cognitive status in older adults. *International Journal of Geriatric Psychiatry*, 36(3), 433–442.
- Imai, K., Keele, L., & Tingley, D. (2010). A general approach to causal mediation analysis. *Psychological Methods*, 15(4), 309–334.
- Kinnunen, K. M., Greenwood, R., Powell, J. H., Leech, R., Hawkins, P. C., Bonnelle, V., Patel, M. C., Counsell, S. J., & Sharp, D. J. (2011). White matter damage and cognitive impairment after traumatic brain injury. *Brain*, 134(2), 449–463.
- Koziol, L. F., & Budding, D. E. (2009). *Subcortical Structures and Cognition: Implications for Neuropsychological Assessment*. Springer Science & Business Media.
- Larrabee, G. J. (2018). 3 Psychometric Foundations of Neuropsychological Assessment. *Textbook of Clinical Neuropsychology*, 22-38.
- Larson, E. B., Kirschner, K., Bode, R., Heinemann, A., & Goodman, R. (2005). Construct and predictive validity of the repeatable battery for the assessment of neuropsychological status in the evaluation of stroke patients. *Journal of Clinical and Experimental Neuropsychology*, 27(1), 16–32.
- Levey, A., Lah, J., Goldstein, F., Steenland, K., & Bliwise, D. (2006). Mild cognitive impairment: an opportunity to identify patients at high risk for progression to Alzheimer's disease. *Clinical Therapeutics*, 28(7), 991–1001.
- Lezak, M. D., Howieson, D. B., Loring, D. W., & Fischer, J. S. (2004). *Neuropsychological assessment*. Oxford University Press, USA.
- Linkenkaer-Hansen, K., Nikouline, V. V., Palva, J. M., & Ilmoniemi, R. J. (2001). Long-Range temporal correlations and scaling behavior in human brain oscillations. *Journal of Neuroscience*, 21(4), 1370–1377.
- Lohse, K., Buchanan, T., & Miller, M. (2016). Underpowered and overworked: Problems with data analysis in motor learning studies. *Journal of Motor Learning and Development*, 4(1), 37-58.
- Luck, S. J. (2014). *An introduction to the event-related potential technique*. MIT press.
- Meisel, C., Bailey, K., Achermann, P., & Plenz, D. (2017). Decline of long-range temporal correlations in the human brain during sustained wakefulness. *Scientific reports*, 7(1), 1-11.
- Oostenveld, R., & Praamstra, P. (2001). The five percent electrode system for high-resolution EEG and ERP measurements. *Clinical Neurophysiology*, 112(4), 713–719.
- Pathania, A., Schreiber, M., Miller, M. W., Euler, M. J., & Lohse, K. R. (2021). Exploring the reliability and sensitivity of the EEG power spectrum as a biomarker. *International Journal of Psychophysiology*, 160, 18–27.

- Patton, D. E., Duff, K., Schoenberg, M. R., Mold, J., Scott, J. G., & Adams, R. L. (2003). Performance of cognitively normal African Americans on the RBANS in community dwelling older adults. *The Clinical Neuropsychologist*, 17(4), 515–530.
- Peterson, E. J., Rosen, B. Q., Campbell, A. M., Belger, A., & Voytek, B. (2017). 1/f neural noise is a better predictor of schizophrenia than neural oscillations. *Biorxiv*, 113449.
- Poil, S.S., De Haan, W., van der Flier, W. M., Mansvelder, H. D., Scheltens, P., & Linkenkaer-Hansen, K. (2013). Integrative EEG biomarkers predict progression to Alzheimer's disease at the MCI stage. *Frontiers in Aging Neuroscience*, 5.
- Randolph, C. (1998). *Repeatable Battery for the Assessment of Neuropsychological Status (RBANS)*. San Antonio, TX: Psychological Corporation.
- Randolph, C. (2012). *RBANS update: Repeatable battery for the assessment of neuropsychological status*. PsychCorp.
- Salthouse, T. A. (2000). Aging and measures of processing speed. *Biological Psychology*, 54(1), 35–54.
- Salthouse, T. A., & Davis, H. P. (2006). Organization of cognitive abilities and neuropsychological variables across the lifespan. *Developmental Review*, 26(1), 31–54.
- Schaefer, S. Y., Dibble, L. E., & Duff, K. (2015). Efficacy and feasibility of functional upper extremity task-specific training for older adults with and without cognitive impairment. *Neurorehabilitation and Neural Repair*, 29(7), 636–644.
- Schaefer, S. Y., & Hengge, C. R. (2016). Testing the concurrent validity of a naturalistic upper extremity reaching task. *Experimental Brain Research*, 234(1), 229–240.
- Schaefer, S. Y., Hooyman, A., & Duff, K. (2020). Using a timed motor task to predict one-year functional decline in amnesic Mild Cognitive Impairment. *Journal of Alzheimer's Disease*, 77(1), 53–58.
- Tingley, D., Yamamoto, T., Hirose, K., Keele, L., & Imai, K. (2014). Mediation: R package for causal mediation analysis.
- Voss, R. F., & Clarke, J. (1975). 1/f noise in music and speech. *Nature*, 258, 317–318.
- Voytek, B., & Knight, R. T. (2015). Dynamic network communication as a unifying neural basis for cognition, development, aging, and disease. *Biological Psychiatry*, 77(12), 1089–1097.
- Voytek, B., Kramer, M. A., Case, J., Lepage, K. Q., Tempesta, Z. R., Knight, R. T., & Gazzaley, A. (2015). Age-related changes in 1/f neural electrophysiological noise. *Journal of Neuroscience*, 35(38), 13257–13265.
- Wagenmakers, E.J., Farrell, S., & Ratcliff, R. (2004). Estimation and interpretation of 1/fa noise in human cognition. *Psychonomic Bulletin & Review*, 11(4), 579–615.
- Ward, L. M., & Greenwood, P. E. (2007). 1/f noise. *Scholarpedia*, 2(12), 1537.
- Welch, P. (1967). The use of fast Fourier transform for the estimation of power spectra: a method based on time averaging over short, modified periodograms. *IEEE Transactions on Audio and Electroacoustics*, 15(2), 70–73.



A**B****C**