

1 *Seroprevalence of SARS-CoV-2, symptom profiles and seroneutralization during the first*
2 *COVID-19 wave in a suburban area, France*

3 **Authors:** Anne GÉGOUT PETIT^{1†*}; Hélène JEULIN^{2,3†}; Karine LEGRAND⁴; Agathe
4 BOCHNAKIAN⁴; Pierre VALLOIS¹; Evelyne SCHVOERER^{2,3 ††}; Francis GUILLEMIN^{4 ††}

5 * corresponding author. Université de Lorraine, IECL, BP 70239, 54506 Vandoeuvre-lès-
6 Nancy Cedex, France. E-mail : anne-gegout-petit@univ-lorraine.fr

7 †Joint first authors

8 ††Joint senior authors

9 ¹Université de Lorraine, CNRS, Inria, IECL, F-54000 Nancy, France, ²Université de
10 Lorraine, CNRS, LCPME, F-54000 Nancy, France, ³Laboratoire de Virologie, CHRU de
11 Nancy Brabois, F-54500 Vandoeuvre-lès-Nancy, France, ⁴CHRU -Nancy, INSERM,
12 Université de Lorraine, CIC Epidémiologie clinique, F-54000 Nancy, France,

13

14

15

16

17

18

19 **Abstract**

20 *Background.* The World Health Organisation recommends monitoring the circulation of severe
21 acute respiratory syndrome coronavirus 2 (SARS-CoV-2). We aimed to estimate anti-SARS-
22 CoV-2 total immunoglobulin (IgT) antibody seroprevalence and describe symptom profiles and
23 *in vitro* seroneutralization in Nancy, France, in spring 2020.

24 *Methods.* Individuals were randomly sampled from electoral lists and invited with household
25 members over 5 years old to be tested for anti-SARS-CoV-2 (IgT, i.e. IgA/IgG/IgM) antibodies
26 by ELISA (Bio-rad). Serum samples were classified according to seroneutralization activity
27 >50% (NT50) on Vero CCL-81 cells. Age- and sex-adjusted seroprevalence was estimated.
28 Subgroups were compared by chi-square or Fisher exact test and logistic regression.

29 *Results.* Among 2006 individuals, 43 were SARS-CoV-2-positive; the raw seroprevalence was
30 2.1% (95% confidence interval 1.5 to 2.9), with adjusted metropolitan and national standardized
31 seroprevalence 2.5% (1.8 to 3.3) and 2.3% (1.7 to 3.1). Seroprevalence was highest for 20- to
32 34-year-old participants (4.7% [2.3 to 8.4]), within than out of socially deprived area (2.5% vs
33 1%, $P=0.02$) and with than without intra-family infection ($p<10^{-6}$). Moreover, 25% (23 to 27)
34 of participants presented at least one COVID-19 symptom associated with SARS-CoV-2
35 positivity ($p<10^{-13}$), with anosmia or ageusia highly discriminant (odds ratio 27.8 [13.9 to 54.5]),
36 associated with dyspnea and fever. Among the SARS-CoV-2-positives, 16.3% (6.8 to 30.7)
37 were asymptomatic. For 31 of these individuals, positive seroneutralization was demonstrated
38 *in vitro*.

39 *Conclusions.* In this population of very low anti-SARS-CoV-2 antibody seroprevalence, a
40 beneficial effect of the lockdown can be assumed, with frequent SARS-CoV-2
41 seroneutralization among IgT-positive patients.

42

43 *Key Messages*

- 44 • Total immunoglobulin antibody (IgT) measurement is an accurate tool to monitor the
45 circulation of severe acute respiratory syndrome coronavirus 2 (SARS-CoV-2) and a
46 key biological feature to assume the spread of COVID-19 later after the appearance of
47 symptoms.
- 48 • IgT seroprevalence was 2.1% in the Grand Nancy Metropolitan area, France; was
49 highest for young adults; in socially deprived area, but this was not confirmed at the
50 individual level; and was associated with high intra-family viral transmission.
- 51 • About two thirds of IgT-positive individuals exhibited SARS-CoV-2–positive
52 seroneutralization.

53 **Trial registration:** NCT04448769

54 **word count (max 3000 words main text only; excluding Abstract, References, tables and**
55 **figures): 2997**

56

57 **BACKGROUND**

58 The World Health Organisation (WHO) (1) recommends a good observation of the circulation
59 of the severe acute respiratory syndrome coronavirus 2 (SARS-CoV-2), including local
60 seroprevalence surveys, to adapt the public health response to COVID-19 (2). Indeed,
61 population containment, sanitary procedures and planning must be defined in terms of a
62 quantified health concern. To estimate the proportion of individuals who were or are infected
63 by the virus, serology assays for detecting anti-SARS-CoV-2 antibodies are useful in all
64 individuals with mild (or no) clinical signs, with or without a RT-PCR test.

65 Between January and July 2020, 13 general-population serology surveys of SARS-CoV-2 were
66 reported in Europe, 10 in the United States, 4 in Brazil, 1 in Pakistan and 1 in Japan (*personal*
67 *communication*). Most (n=20) estimated the seroprevalence between 0 and 5%; half under
68 2.5%. Six studies conducted in regions highly affected by the epidemic estimated the anti-
69 SARS-CoV-2 antibody seroprevalence at more than 15% (2–7). Few studies investigated the
70 relation between seroprevalence and social precariousness, despite some evidence that health
71 inequalities are reflected in the pandemic (8,9).

72 Serology assays usually detect antibodies against the viral spike “S” and nucleocapsid “N”
73 protein, both being highly antigenic and widely expressed during SARS-CoV-2 infection (10).
74 After primary infection, immunoglobulin G (IgG) levels increase continuously, peaking at
75 about 6 weeks after infection and often remaining high for 6 months. The neutralizing activity
76 usually peaks after 4 weeks and then can slowly decrease (11). At 4 months after a first positive
77 anti-SARS-CoV-2 antibody result, 41% of infected patients become negative for anti-N
78 antibodies, most still positive for anti-S antibodies (12). The viral infection requires the
79 receptor-binding domain (RBD) of the S protein, which is the molecular determinant of viral
80 attachment to the host cell receptor angiotensin-converting enzyme 2 (ACE-2) (13). Antibodies
81 targeting the S protein neutralize the virus entering into the cell, and the IgM, IgA and IgG

82 antibodies directed at the RBD of the S protein are highly neutralizing (14–16). Thus, well-
83 standardized, reproducible antibody assays are crucial to establish correlates of risk and
84 protection so that SARS-CoV-2 neutralization assays can be used for antibody monitoring in
85 natural infection and vaccine trials (17).

86 The first COVID-19 cases were reported in France in January 2020 (18) and a strong SARS-
87 CoV-2 emergence was observed in northeast France in March and April 2020, with numerous
88 patients presenting at Nancy University hospital, France (19). To document the strength of
89 SARS-CoV-2 circulation, biological samples from a random sample of the population were
90 needed for serological testing (1). Our primary objective was to estimate the anti-SARS-CoV-
91 2 total Ig (IgT) antibody seroprevalence in a random sample of the population of the Grand
92 Nancy Metropolitan area. The secondary objectives were to estimate 1) the proportion of
93 asymptomatic cases or symptom profiles, 2) the proportion of seropositive people according to
94 level of social precariousness, and 3) the *in vitro* neutralization capacity of viral infectivity for
95 the detected anti-SARS-CoV-2 antibodies.

96

97 **METHODS**

98

99 The COVAL Nancy cross-sectional study was conducted between 26 June and 24 July 2020.

100

101 **Sampling**

102 The target population consisted of all inhabitants of the Grand Nancy metropolitan area who
103 were ≥ 5 years old on 1 June 2020. Adults randomly sampled from the electoral lists were
104 invited to participate with all household members. To ensure representativeness, sampling was
105 carried out by strata of homogeneous housing areas according to socio-economic criteria (IRIS
106 habitat; INSEE Source(s): INSEE, Géographie à l'infra-communale [Official Geographic
107 Code]), with each homogeneous housing area (IRIS) associated with the European deprivation

108 index (EDI) (20). This continuous index consists of ecological variables best identified to reflect
109 the individual experience of deprivation and is grouped by INSEE into classes by quintiles; 5
110 is the most deprived class.

111 From preliminary regional estimates with strong county disparities (21) and given serologic test
112 sensitivity (100%) and specificity (99.5%), with 1% target precision and 95% confidence
113 interval, we needed 1987 individuals to detect a 5% seroprevalence. Accordingly, the survey
114 logistics were organized to account for estimated individual response rate, household members'
115 participation, appointment attendance and agreeing for blood sampling; we aimed to include
116 2000 individuals.

117 All invited individuals were informed of the objectives and the workflow of the study by using
118 comprehensive messaging adapted to age. All individuals gave their signed consent.

119 Ethical approval was obtained (Comité de Protection des Personnes EST III, NANCY,
120 France: ID RCB 2020-A01593-36) on 16 June 2020 and the French Commission for
121 Individual Data Protection and Public Liberties (CNIL) on 19 June 2020.

122 During the inclusion visit to the Nancy University Hospital, each participant completed a self-
123 reporting questionnaire adapted to age (adult, adolescent; child questionnaire completed by
124 parents). The following data were collected:

- 125 - socio-demographic characteristics: age, sex, socio-professional category, education level;
- 126 - Evaluation of Deprivation and Inequalities in Health Examination Centres (EPICES)
127 questionnaire (for adults) (22), a composite index commonly used to measure individual
128 deprivation. A score is calculated on the basis of 11 weighted questions related to material and
129 social deprivation, ranging from 0 to 100 (> 30 associated with social deprivation).
- 130 - health characteristics: body mass index, smoking status, influenza vaccination, health
131 problems, pregnancy;

132 - potential contacts with a person with COVID-19: perception of infection with the virus,
133 relatives infected;
134 - symptoms experienced since mid-February: fever, cough, runny nose, chest pain, anosmia or
135 ageusia, sore throat, muscle pain, aches, fatigue, headaches, skin rashes, appetite loss, shortness
136 of breath, diarrhoea, loss of balance, abdominal pain, nausea, and irritated eyes. According to
137 the European Center for Disease Prevention and Control (23), at least one symptom among
138 fever, cough, anosmia or ageusia, and shortness of breath indicates COVID-19.

139
140 **Serology**
141

142 Blood samples were centrifuged to collect serum, which was stored at +4°C and then -20°C.
143 Total anti-SARS-CoV-2 antibodies (IgA/IgG/IgM) were detected by using ELISA (Platelia
144 SARS-CoV-2 Total Ab Assay, Bio-rad) on an Evolis Premium device (Bio-rad). IgM and IgG
145 antibodies were detected by using an immunochromatographic test (Biosynex), with IgA by
146 ELISA (Anti-SARS-CoV-2 Assay, Euroimmun) on SARS-CoV-2–seropositive samples and on
147 samples from SARS-CoV-2–seronegative individuals living with SARS-CoV-2–positive
148 individuals.

149 A person was classified as SARS-CoV-2–seropositive if at least two serology tests were
150 positive (Figure 1).

151 **Seroneutralization assay**

152 The SARS-CoV-2 strain from a positive respiratory sample (Covi-Lor collection, Nancy
153 University hospital, France) was cultured on Vero CCL-81 cells (provided by L2CM
154 Laboratory, Nancy). Sera positive for anti-SARS-Cov-2 antibodies were diluted from 1/10 to
155 1/640 and incubated with virus suspension for 2 hr. Cells were inoculated with the final

156 suspension. Each dilution was tested five times in the same experiment and each sample in two
157 independent experiments. The cytopathic effect was read on day +6.
158 Negative controls were uninfected cells; positive controls were the virus incubated without sera
159 and the virus incubated with SARS-CoV-2–negative sera at a 1/10 ratio.
160 The samples were classified according to neutralization activity at the 1:40 dilution:
161 neutralization > 50% (NT50).

162

163 **Statistical analysis**

164 All statistical analyses involved using R 3.6.0. To calculate the 95% confidence interval for
165 fractions, we used the normal approximation interval except for the Clopper Pearson exact
166 method based on binomial distribution for the SARS-CoV-2–positive sample (too small size).
167 The raw seroprevalence estimate was adjusted for age, sex, and EDI quintile, then standardized
168 to the metropolitan and national population (24). For comparing seroprevalence or
169 characteristics between groups, we used chi-square or Fisher exact test and logistic regression,
170 estimating odds ratios (ORs) and 95% confidence intervals (CIs). We used the R package
171 ClustOfVar (25) to study the clustering of symptom variables and draw dendograms. Intra-
172 household infection spread was tested by a permutation test (26). The principle was to generate,
173 by simulation, the empirical distribution of the number of infected households under the null
174 hypothesis, respecting the number of individual cases and the structure of the households
175 observed in the sample. We used simulation to calculate the relative risk (and 95% CI) of being
176 SARS-CoV-2–positive in a household with a SARS-CoV-2–positive member.

177 **RESULTS**

178

179 *Sample description (Figure 2)*

180 We invited 6094 people to participate to enable the inclusion of 2006 participants, aged 5 to 95
181 years old from 1111 households: 55% were women and 148 under 18-year-old; 469 people
182 came to the visit alone, 938 came as a couple and the others (599) came as a family of 3 to 6
183 people.

184 The Grand Nancy Metropolitan area comprises 110 IRIS zones; 108 were represented. People
185 in neighbourhoods with a high socio-economic level (measured by the EDI) and high socio-
186 professional category responded better than others. According to the EPICES score, 388 of the
187 1816 (21%) participants with this score were considered to live in social precariousness.

188 Social precariousness was also linked to the IRIS EDI quintile: less than 16% in the first three
189 quintiles, up to 23% in the fourth quintile and 40% in the last quintile ($p < 10^{-5}$); it also increased
190 with age: 16% in the 5-44 age group, 18% in the 45-64 age group and 28% in those over 65
191 ($p < 10^{-5}$).

192 Among the 2006 participants, 16% were smokers, 2% used nicotine substitutes, and 29% were
193 former smokers. Moreover, 294 (14.6%) reported at least one comorbidity (among:
194 hypertension, cancer, diabetes, kidney failure, liver problems, immune deficiency,
195 immunosuppressive therapy, severe obesity). The presence of a comorbidity was not related to
196 EDI score but was strongly related to social precariousness: 26% of those in precarious
197 situations had at least one comorbidity as compared with 13% of others ($p < 10^{-5}$).

198 In total, 252 (12.6%) participants thought they were infected with COVID-19 because they
199 experienced symptoms (86%) and/or had been in contact with a sick person (44%). Among
200 contacts with COVID-19, 42% were from work areas, 28% were family and 22% were friends.

201 ***General seroprevalence***

202 According to the results of anti-SARS-CoV-2 IgT detection and complementary analyses
203 performed as described in Figure 1, 43 of the 2006 participants were found to be seropositive.
204 Thus, seroprevalence was 2.1% (95% CI 1.5 to 2.8]). On adjustment for age, sex and EDI
205 quintile, seroprevalence was 2.5 (1.8 to 3.3) standardized for the Grand Nancy Metropolitan
206 area and 2.3 (1.7 to 3.1) standardized for France.

207 Among the 43 SARS-CoV-2–positive samples, none was positive for anti–SARS-CoV-2 IgM
208 antibody only, 17 (39.5%) were positive for anti–SARS-CoV-2 IgM and IgG antibodies and 26
209 (60.5%) were positive for anti–SARS-CoV-2 IgG antibody only (Table 1).

210 *Seroprevalence by age and socioeconomic status (Table 2)*

211 Seroprevalence was highest in the 20-34 age group (4.7% [95% CI 2.3 to 8.4]) and in people
212 from area with lower socioeconomic level (2.7% vs 1% for EDI quintiles 3, 4 and 5 vs 1 and 2,
213 $P=0.02$). We observed little difference in prevalence among people without and with a
214 baccalaureate diploma (1.4% vs 2.6%, $P=0.10$) and social precariousness (1.0% vs 2.5% for
215 EPICES scores >30 vs ≤ 30 , $P=0.09$). Social precariousness had no protective effect as seen by
216 the probability of precariousness estimated with adjusted or random-effects models ($P=0.07$ to
217 0.11) (see Table 2 for one of the models).

218 *Seroprevalence with other factors*

219 Seroprevalence did not differ between smokers and non-smokers (1.2% vs 2.4%) ($P=0.18$) or
220 by sex, household size, weight status or presence of risk factors (Table 2). Of the 252
221 participants who thought they had COVID-19, 31 (12%) were SARS-CoV-2–positive and 6
222 (2%) were negative but lived in a household with a SARS-CoV-2–positive person. Furthermore,
223 72% of SARS-CoV-2–positive individuals thought they had been infected. Among those who

224 did not think they had COVID-19, 12 (0.7%) were SARS-CoV-2–positive and 20 (1.1%) were
225 negative but lived in a household with a SARS-CoV-2–positive person.

226 For households, 34 (3.1% [95% CI 2.1 to 4.3]) had at least one SARS-CoV-2–positive
227 individual. Household seroprevalence was slightly higher if the household size was ≥ 3 (4.1%
228 vs 2.7%, $P=0.26$). We found intra-household spread (permutation test, $p<10^{-6}$), and probability
229 of infection was multiplied by 30 (95% CI 11 to 78]) with a SARS-CoV-2–positive household
230 member.

231 *Symptoms*

232 In the overall sample, 25% (95% CI 23 to 27) showed symptoms that would indicate they had
233 COVID-19. This criterion was related to seroprevalence (6.5% vs 0.7% with and without
234 COVID-19 symptoms, $p<10^{-13}$). Nearly half of the individuals (47%) reported experiencing at
235 least one of the 18 collected symptoms (14% one “intense” symptom). Seroprevalence was
236 higher with than without at least one symptom (3.8% vs 0.7%, $p<10^{-3}$) and when at least one of
237 the symptoms was qualified as “intense” (9.4% vs 0.7%, $p<10^{-17}$). For each of the identified
238 symptoms (except irritated eyes and rash), seroprevalence was higher when the symptom was
239 expressed (see Table 3), with anosmia or ageusia the most discriminating symptom (OR 27.8
240 [95% CI 13.9 to 54.5]).

241 Focusing on the 43 SARS-CoV-2–positive individuals, 7 (16.3% [95% CI 6.8 to 30.7])
242 experienced no symptoms. The asymptomatic form did not depend on age ($P=0.4$) or sex
243 ($P=0.9$).

244 Most symptomatic people experienced symptoms in March (Figure 3), which shows a clear
245 effect of confinement on slowing/stopping the spread of the disease.

246 Among those with at least one symptom, many (72%) reported this symptom as “intense”. A
247 cluster analysis of symptoms in SARS-CoV-2–positive individuals grouped anosmia or
248 agueusia with influenza-like illness (Figure 4). Anosmia or agueusia was strongly associated
249 with shortness of breath ($P=0.0002$) and fever ($P=0.0008$) but almost never occurred without
250 fever (1/17).

251 *Seroneutralization assay*

252 For 31/43 (72% [95% CI 56 to 85]) SARS-CoV-2–positive individuals, antibody detection was
253 associated with neutralization activity ($NT50 \geq 40$) (Table 1). Twelve seropositive samples
254 presented no or weak neutralization capacity. Among 17 serum samples with recent
255 seroconversion (IgM+IgG positive), 12 (71%) presented seroneutralisation activity, as did
256 19/26 (73%) with older seroconversion (IgG only) ($NT50 \geq 40$). Seroconversion did not depend
257 on age ($P=0.8$), sex ($P=0.6$), or time between symptoms and data collection. Seroneutralization
258 did not depend on the presence of symptoms ($P=0.9$). The NT50 was increased with strong
259 symptoms ($P=0.24$).

260 **DISCUSSION**

261 In July 2020, the low seroprevalence of SARS-CoV-2 (i.e., 2.1% SARS-CoV-2–positive cases
262 among the 2006 included individuals) underlined how the Grand Nancy Metropolitan area
263 population remained immuno-naïve and susceptible to the second epidemic wave that occurred
264 during autumn/winter 2020/2021 in France. One in six SARS-CoV-2–positive individuals
265 remained asymptomatic.

266 Seropositivity was associated with the ecological marker social deprivation (EDI) but not when
267 assessed with social precariousness at the individual level (EPICES), which may indicate some
268 protective effect. Such discrepancy might be related to the social isolation of deprived

269 individuals during the lockdown, independent of residence, potentially resulting in less
270 exposure for many reasons (unemployment, fear of meeting people).

271 Within the *Coronaviridae* family, SARS-CoV-2 is phylogenetically close to SARS-CoV and to
272 a lesser extent MERS-CoV (27). Cross-reactivity with seasonal coronaviruses has to be
273 discussed. Even if recently, pre-existing HCoV-NL63 antibody response cross-reacting with
274 some SARS-CoV-2 antigens was detected in both pre- and mid-pandemic infected individuals
275 (28), no cross-reactivity of serology methods with the seasonal coronavirus was reported (29)
276 and no neutralizing activity of SARS-CoV-2 in pre-pandemic sera was observed (30). All
277 positive serum samples were positive for antibodies against the RBD of S protein (Biosynex
278 test). IgM and IgG antibodies directed against the RBD are assumed to decrease in titers during
279 the 6 months post-infection. Since the study took place less than 6 months after the first
280 epidemic peak, the seroprevalence is representative of the exposure of the population to SARS-
281 CoV-2 during the first wave. The question of the remaining humoral immunity is currently
282 unsolved, but even though the IgG titers and neutralizing activity decreases, the number of
283 RBD-specific memory B cells was unmodified at 6 months, which can contribute to the immune
284 response to a secondary infection (31). Moreover, the presence of high IgG and IgM antibodies
285 to the spike S1 C-terminal domain in recovered patients might be associated with efficient
286 immune protection in COVID-19 patients (32).

287 A recent work reported that standard commercially available SARS-CoV-2 IgG results could
288 be a useful surrogate for neutralizing antibody testing (32). However, in the present study,
289 antibody neutralizing titers were determined *in vitro* by using a native SARS-CoV-2 strain to
290 be closer to the physiological infection of cells by SARS-CoV-2 in northeast France (33).
291 Twelve of 43 SARS-CoV-2-positive individuals presenting no or weak neutralizing titers
292 agrees with a study of COVID-19 recovered patients (33).

293 This study has strengths. First, in this relatively small geographical area, we were able to
294 stratify sampling based on homogenous population zones (IRIS zones) and tag the level of
295 social deprivation by using the corresponding ecological EDI index, to better represent the
296 target population in terms of this variable that has been considered an important risk factor for
297 COVID-19 (8). Second, seroprevalent cases were carefully identified by using several
298 methods for confirming seropositivity (figure 1). Third, seroneutralization capacity was
299 investigated in duplicate, in line with recommended standard practices, instead of derived
300 from IgG results (33,34)

301 The study has some limitations. First, the sampling electoral database, chosen for its immediate
302 availability in such a small and delimited area, did not completely cover the adult population
303 because some people left the area (among the 6094 people invited, 38% were not really solicited
304 [wrong addresses, death etc.]), newcomers to the area did not yet register (not mandatory), and
305 non-European citizens were not eligible, which creates some representativeness bias (35).
306 Second, the estimated response rate was relatively low in a period immediately following the
307 lockdown, with many people already gone away for July summer holidays. Third, all data were
308 self-reported, which may lead to some measurement (declaration) bias. Moreover, even if the
309 number of individuals was sufficient to satisfy the main objective, the study lacked statistical
310 power for the study of risk factors.

311 Finally, with novel SARS-CoV-2 variants emerging all over the world (36), the neutralizing
312 activity of positive sera against novel SARS-CoV-2 variants could be evaluated.

313 In conclusion, IgT assays are key tools to monitor the circulation of SARS-CoV-2 and the
314 impact of public health guidelines (37). In this population of low anti-SARS-CoV-2
315 seroprevalence, a beneficial effect of the lockdown can be assumed with frequent SARS-CoV-

316 2 seroneutralization among IgT-positive patients. IgT seroprevalence was higher for young
317 adults and was associated with intra-family SARS-CoV-2 transmission.

318

319 **DATA AVAILABILITY STATEMENT**

320 The data for this article will be shared on reasonable request to the corresponding author.

321

322 **FUNDING**

323 This work was supported by a grant from the Métropole du Grand Nancy, Nancy, France.

324

325 **ACKNOWLEDGMENTS**

326 The authors warmly acknowledge the inhabitants of the Grand Nancy metropolitan who
327 participated in COVAL Nancy Study. COVAL is funded by the Grand Nancy metropolitan.

328 The sponsor was CHRU de Nancy (Direction de la Recherche Clinique et de l'Innovation).

329 Many people worked together enthusiastically to make the COVAL Nancy study a success. **For**

330 **Université de Lorraine**, we would like to thank Nicolas THORR, Julia Budzinski and Didier

331 GEMMERLÉ (Institut Élie Cartan de Lorraine) for participating in the draw and statistical
332 analysis.

333 Damien GARAUD for his open source code of Iris geolocation.

334 **For CHRU de Nancy**, we would like to express our gratitude to:

335 - the Département Méthodologie, Promotion, Investigation, Mehdi SIAGHY, Nathalie
336 THILLY, Marjorie STARCK and Louise GEND for their support.

337 - the Centre d'Investigation Clinique Epidémiologie Clinique members for their contribution to
338 organisation, blood samples and data collection, data entry and management, activity reporting,
339 and logistic with Sylvie KLEIN Marie SPONGA, Jean-Marc VIRION, Laurence EMPORTE,

340 Sandrine GRANDCLERE, Emilie JACQUOT, Sylvie RONCHETTI Agathe BOCHNAKIAN,
341 Heloise BRIANCON, Alfousseyni COLY, Marie Rita LETOURNEUR, Sandrine GERSET,
342 Nathalie DUMONT, Nathalie PIERREZ, Nina THIAVILLE, Sandrine TYRODE, Véronique
343 VOGEL, Christelle DUJON, Nicole KOEBEL, Philippe MELCHIOR and Samia
344 MAHMOUDI.

345 - the Centre d'Investigation Clinique Pluridisciplinaire members for their contribution to
346 organisation and realisation of blood samples: Patrick ROSSIGNOL, Nicolas GIRERD, Edith
347 DAUCHY, Helene COYARD, Evelyne MICOR, Agnes PEZZI, Lydie POINSIGNON and
348 Jonathan UDOT.

349 - the Unité d'Investigation Clinique for their contribution to organisation and realisation of
350 blood samples: Nathalie THILLY, Valerie BOUAZIZ and Marie Alexandra PAQUOT et Nelly
351 FRANCOIS

352 - the Hôpital d'Enfant, Cyril SCHWEITZER, Valerie RATAJCZAK, Herve LEROY the and
353 the pediatry nurses for the realisation of child blood samples

354 - the technical and management teams of the Laboratories for the realization of SARS-CoV-2
355 serology and samples management, Mihayl VARBANOV and Stéphanie PHILIPPOT of the
356 L2CM Laboratory (Nancy) for the cell model of culture of SARS-CoV-2 and Jonathan MAYER
357 (medical student) for his contribution to the performance of seroneutralization analyzes.

358 - the Direction des Soins in particularly Mireille GAUDRON, Sandrine HAYO VILLENEUVE,
359 Sandrine JORAY et Julie THOUVENIN-GALANTI

360 - the Centre de Ressources Biologiques (CRB) Lorrain of Nancy BB-0033-00035 for managing
361 patient samples : Catherine MALAPLATE and Sandra LOMAZZI.

362 - the Communication members Laurence VERGER and David KOZON

363 - the Direction des Services Informatiques in particularly Lionel SCHWEITZER

364

365

366 CONFLICT OF INTEREST

367 None declared

368

369 REFERENCES

- 370 1. Organization WH. Population-based age-stratified seroepidemiological investigation protocol
371 for coronavirus 2019 (COVID-19) infection, 26 May 2020.
372 <https://apps.who.int/iris/handle/10665/332188> (May, 2020 date last accessed)
- 373 2. Younas A, Waheed S, Khawaja S, Imam M, Borhany M, Shamsi T. Seroprevalence of SARS-CoV-2
374 antibodies among healthy blood donors in Karachi, Pakistan. *Transfus Apher Sci.* août
375 2020;102923.
- 376 3. McLaughlin CC, Doll MK, Morrison KT, et al. High Community SARS-CoV-2 Antibody
377 Seroprevalence in a Ski Resort Community, Blaine County, Idaho, US. Preliminary Results.
378 *MedRxiv Prepr Serv Health Sci.* 21 juill 2020;
- 379 4. Percivalle E, Cambiè G, Cassaniti I, et al. Prevalence of SARS-CoV-2 specific neutralising
380 antibodies in blood donors from the Lodi Red Zone in Lombardy, Italy, as at 06 April 2020.
381 *Eurosurveillance.* [https://www.eurosurveillance.org/content/10.2807/1560-](https://www.eurosurveillance.org/content/10.2807/1560-7917.ES.2020.25.24.2001031)
382 [7917.ES.2020.25.24.2001031](https://www.eurosurveillance.org/content/10.2807/1560-7917.ES.2020.25.24.2001031) (Jun, 2020 date last accessed)
- 383 5. Pagani G, Conti F, Giacomelli A, et al. Seroprevalence of SARS-CoV-2 significantly varies with
384 age: Preliminary results from a mass population screening. *J Infect.* 19 sept 2020;
- 385 6. Naranbhai V, Chang CC, Beltran WFG, et al. High Seroprevalence of Anti-SARS-CoV-2 Antibodies
386 in Chelsea, Massachusetts. *J Infect Dis.* 13 nov 2020;222(12):1955-9.
- 387 7. Borges LP, Martins AF, de Melo MS, , et al. Seroprevalence of SARS-CoV-2 IgM and IgG
388 antibodies in an asymptomatic population in Sergipe, Brazil. *Rev Panam Salud Publica Pan Am J*
389 *Public Health.* 2020;44:e108.
- 390 8. Kawachi I. COVID-19 and the 'rediscovery' of health inequities. *Int J Epidemiol.* 1 oct
391 2020;49(5):1415-8.
- 392 9. Hallal PC, Hartwig FP, Horta BL, et al. SARS-CoV-2 antibody prevalence in Brazil: results from
393 two successive nationwide serological household surveys. *Lancet Glob Health.*
394 2020;8(11):e1390-8.
- 395 10. Liu W, Liu L, Kou G, et al. Evaluation of nucleocapsid and spike protein-based enzyme-linked
396 immunosorbent assays for detecting antibodies against SARS-CoV-2. *J Clin Microbiol.*
397 2020;58(6).
- 398 11. Flehmig B, Schindler M, Ruetalo N, et al. Persisting Neutralizing Activity to SARS-CoV-2 over
399 Months in Sera of COVID-19 Patients. *Viruses.* déc 2020;12(12):1357.

- 400 12. Stefanelli P, Bella A, Fedele G, et al. Prevalence of SARS-CoV-2 IgG antibodies in an area of
401 northeastern Italy with a high incidence of COVID-19 cases: a population-based study. *Clin*
402 *Microbiol Infect.* [https://www.clinicalmicrobiologyandinfection.com/article/S1198-](https://www.clinicalmicrobiologyandinfection.com/article/S1198-743X(20)30709-6/abstract)
403 [743X\(20\)30709-6/abstract](https://www.clinicalmicrobiologyandinfection.com/article/S1198-743X(20)30709-6/abstract). (Nov, 2020 date last accessed).
- 404 13. Zost SJ, Gilchuk P, Chen RE, et al. Rapid isolation and profiling of a diverse panel of human
405 monoclonal antibodies targeting the SARS-CoV-2 spike protein. *bioRxiv.*
406 <https://www.ncbi.nlm.nih.gov/pmc/articles/PMC7263562/> (Mai, 2020 date last accessed).
- 407 14. Dogan M, Kozhaya L, Placek L, et al. Novel SARS-CoV-2 specific antibody and neutralization
408 assays reveal wide range of humoral immune response during COVID-19. *medRxiv.*
409 <https://www.ncbi.nlm.nih.gov/pmc/articles/PMC7359542/> (October, 2020 date last accessed).
- 410 15. Mazzini L, Martinuzzi D, Hyseni I, et al. Comparative analyses of SARS-CoV-2 binding (IgG, IgM,
411 IgA) and neutralizing antibodies from human serum samples. *J Immunol Methods.*
412 <https://www.ncbi.nlm.nih.gov/pmc/articles/PMC7695554/> (Nov, 2020 date last accessed)
- 413 16. Klingler J, Weiss S, Itri V, et al. Role of IgM and IgA Antibodies in the Neutralization of SARS-
414 CoV-2. <http://medrxiv.org/lookup/doi/10.1101/2020.08.18.20177303> (Aug, 2020 date last
415 accessed)
- 416 17. Sholukh AM, Fiore-Gartland A, Ford ES, et al. Evaluation of SARS-CoV-2 neutralization assays for
417 antibody monitoring in natural infection and vaccine trials. *Infectious Diseases (except*
418 *HIV/AIDS).* <http://medrxiv.org/lookup/doi/10.1101/2020.12.07.20245431> (Dec, 2020 date last
419 accessed)
- 420 18. Stoecklin SB, Rolland P, Silue Y, et al. First cases of coronavirus disease 2019 (COVID-19) in
421 France: surveillance, investigations and control measures, January 2020. *Eurosurveillance.* 13
422 févr 2020;25(6):2000094.
- 423 19. Oussalah A, Gleye S, Clerc Urmes I, et al. Long-term ACE Inhibitor/ARB Use Is Associated With
424 Severe Renal Dysfunction and Acute Kidney Injury in Patients With Severe COVID-19: Results
425 From a Referral Center Cohort in the Northeast of France. *Clin Infect Dis Off Publ Infect Dis Soc*
426 *Am.* 03 2020;71(9):2447-56.
- 427 20. Pornet C, Delpierre C, Dejardin O, et al. Construction of an adaptable European transnational
428 ecological deprivation index: the French version. *J Epidemiol Community Health.* nov
429 2012;66(11):982-9.
- 430 21. Salje H, Tran Kiem C, Lefrancq N, et al. Estimating the burden of SARS-CoV-2 in France. *Science.*
431 10 juill 2020;369(6500):208-11.
- 432 22. Labbe E, Moulin JJ, Gueguen R, Sass C, Chatain C, Gerbaud L. Un indicateur de mesure de la
433 précarité et de la « santé sociale » : le score EPICES: L'expérience des Centres d'examen de
434 santé de l'Assurance maladie. *Rev Ires.* 2007;53(1):3.
- 435 23. Case definition for coronavirus disease 2019 (COVID-19), as of 3 December 2020. European
436 Centre for Disease Prevention and Control. [https://www.ecdc.europa.eu/en/covid-](https://www.ecdc.europa.eu/en/covid-19/surveillance/case-definition)
437 [19/surveillance/case-definition](https://www.ecdc.europa.eu/en/covid-19/surveillance/case-definition) (Jan, 2020 date last accessed)
- 438 24. INSEE. Population par sexe et groupe d'âges [Internet]. 2020.
439 <https://www.insee.fr/fr/statistiques/2381474> (May, 2020 date last accessed)

- 440 25. Chavent M, Kuentz-Simonet V, Liquet B, Saracco J. ClustOfVar: An R Package for the Clustering
441 of Variables. *J Stat Softw.* 2012;50(13). Disponible sur: <http://www.jstatsoft.org/v50/i13/> (Dec,
442 2020 date last accessed)
- 443 26. Siegel S, Castellan NJ. *Nonparametric Statistics for the Behavioral Sciences.* McGraw-Hill; 1988.
444 440 p.
- 445 27. Naqvi AAT, Fatima K, Mohammad T, et al. Insights into SARS-CoV-2 genome, structure,
446 evolution, pathogenesis and therapies: Structural genomics approach. *Biochim Biophys Acta*
447 *BBA - Mol Basis Dis.* oct 2020;1866(10):165878.
- 448 28. Simula ER, Manca MA, Jasemi S, et al. HCoV-NL63 and SARS-CoV-2 Share Recognized Epitopes
449 by the Humoral Response in Sera of People Collected Pre- and during CoV-2 Pandemic.
450 *Microorganisms.* 14 déc 2020;8(12). Disponible sur:
451 <https://www.ncbi.nlm.nih.gov/pmc/articles/PMC7764996/> (Dec, 2020 date last accessed)
- 452 29. Guo L, Ren L, Yang S, et al. Profiling Early Humoral Response to Diagnose Novel Coronavirus
453 Disease (COVID-19). *Clin Infect Dis.* 28 juill 2020;71(15):778-85.
- 454 30. Poston D, Weisblum Y, Wise H, et al. Absence of SARS-CoV-2 neutralizing activity in pre-
455 pandemic sera from individuals with recent seasonal coronavirus infection. *medRxiv.* 11 oct
456 2020 ; <https://www.ncbi.nlm.nih.gov/pmc/articles/PMC7553167/> (Oct, 2020 date last
457 accessed)
- 458 31. Gaebler C, Wang Z, Lorenzi JCC, et al. Evolution of Antibody Immunity to SARS-CoV-2. *bioRxiv.* 5
459 nov 2020; <https://www.ncbi.nlm.nih.gov/pmc/articles/PMC7654855/> (Nov, 2020 date last
460 accessed)
- 461 32. Bao Y, Ling Y, Chen Y, et al. Dynamic Anti-Spike Protein Antibody Profiles in COVID-19 Patients.
462 *Int J Infect Dis.* dec 2020; Disponible sur:
463 <https://linkinghub.elsevier.com/retrieve/pii/S1201971220325376> (Dec, 2020 date last
464 accessed)
- 465 33. von Rhein C, Scholz T, Henss L, et al. Comparison of potency assays to assess SARS-CoV-2
466 neutralizing antibody capacity in COVID-19 convalescent plasma. *J Virol Methods.* févr
467 2021;288:114031.
- 468 34. Boonyaratanakornkit J, Morishima C, Selke S, et al. Clinical, laboratory, and temporal predictors
469 of neutralizing antibodies to SARS-CoV-2 among COVID-19 convalescent plasma donor
470 candidates. *J Clin Invest.* 15 dec 2020; <http://www.jci.org/articles/view/144930> (Dec, 2020 date
471 last accessed)
- 472 35. Shon J-LPK, Robertson G. Determinants of Electoral Non-Registration and Sensitive
473 Neighbourhoods in France. *Population.* Vol. 59(1):143-56.
- 474 36. Martin J, Klapsa D, Wilton T, et al. Tracking SARS-CoV-2 in Sewage: Evidence of Changes in Virus
475 Variant Predominance during COVID-19 Pandemic. *Viruses.* 9 oct 2020;12(10):1144.
- 476 37. West R, Kobokovich A, Connell N, Gronvall GK. COVID-19 Antibody Tests: A Valuable Public
477 Health Tool with Limited Relevance to Individuals. *Trends in Microbiology.* 2020, in press.

478

479

480 **TABLES AND FIGURES**

481 Table 1: Detection of anti-SARS-CoV-2 total immunoglobulin (IgT) antibodies, determination
482 of Ig isotypes and seroneutralisation activity of seropositive sera

<i>n</i>	IgT	IgM	IgA	IgG	Serological status	Seroneutralization capacity (<i>n</i>)
1923	Negative	NR	NR	NR	Seronegative	NE
32	Negative	Negative	Negative	Negative	Seronegative*	NE
8	Positive	Negative	Negative	Negative	Seronegative	NE
2	Negative	Negative	Positive	Positive	Seropositive*	0
14	Positive	Positive	Positive	Positive	Seropositive	11
0	Positive	Positive	Positive	Negative	Seropositive	NE
3	Positive	Positive	Negative	Positive	Seropositive	1
17	Positive	Negative	Positive	Positive	Seropositive	15
0	Positive	Positive	Negative	Negative	Seropositive	NE
0	Positive	Negative	Positive	Negative	Seropositive	NE
7	Positive	Negative	Negative	Positive	Seropositive	4
2006	Total					

* Living with seropositive people

NE: not evaluated

483

484

485 Table 2: Number of cases, seroprevalence for each risk factor modality. Data are 95%
486 confidence intervals (CIs), odds ratios (ORs) and p values.

Modalities	Positive /Total	%	% CI	OR	OR CI	P
Age						
05-19	2/203	1.0	0.1 - 3.5	0.7	0.1 - 3.2	0.65
20-34	10/215	4.7	2.3 - 8.4	3.4	1.2 - 10.9	0.03
35-49	5/350	1.4	0.5 - 3.3	ref		
50-64	16/553	2.9	1.7 - 4.7	2.1	0.8 - 6.3	0.16
65-79	9/573	1.6	0.7 - 3.0	1.1	0.4-3.6	0.86
80+	1/112	0.9	0.0 - 4.9	0.7	0.0 - 3.9	0.67
Gender						
Female	24/1104	2.2	1.4 - 3.2	ref		
Male	19/902	2.1	1.3 - 3.3	1.0	0.5 - 1.8	0.92
quintileEDI						
1-2	6/615	1.0	0.4 - 0.2	ref		
3-4-5	37/1391	2.7	1.9 - 3.7	2.8	1.3 - 7.3	0.02
Household size						
1	9/364	2.5	1.1 - 4.6	ref		
2	19/882	2.2	1.3 - 3.3	0.9*	0.4 - 2.0	0.74
>=3	15/760	2.0	1.1 - 3.2	0.6	0.2- 1.5	0.24
Educational level: baccaureate						
Yes	33/1266	2.6	1.8 - 3.6	ref		
No	8/586	1.4	0.6 - 2.7	0.5	0.2 - 1.1	0.1
missing	154					
Smoking status						
Non-Smoker	38/1583	2.4	0.2 - 3.3	ref	ref	
Smoker	4/338	1.2	0.3 - 3.0	0.5	0.1 - 1.2	0.17
Missing	85					
Body Mass Index						
<25	22/1162	1.9	1.2 - 2.9	ref		
[25 - 30[15/551	2.7	1.5 - 4.5	1.5	0.7 - 2.8	0.27
>=30	6/284	2.1	0.8 - 4.5	1.1	0.4 - 2.6	0.81
missing	9					
Comorbidity						
No	38/1726	2.20	1.6 - 3.0	ref		
Yes	5/280	1.78	0.6 - 4.1	0.8	0.3 - 1.9	0.65
Precariousness (Adjusted on Age, Sexe and EDI)						
EPICES<=30	35/1428	2.5	1.7 - 3.4	ref		
EPICES>30	4/388	1.0	0.3 - 2.6	0.4	0.1 - 1.0	0.1

487

488

489

490 Table 3: Frequency of symptoms by serology status

Clinical criterion	Seropositive	Seronegative	p-value
<i>n</i>	43	2006	
	%	%	
At least one symptom	83.7	47.6	3,E-06
At least one intense symptom	60.5	13.1	1,E-18
Clinical criteria poss Covid-19*	74.4	23.8	3,E-14
Fever	62.8	14.7	1,E-17
Cough	53.5	12.1	1,E-15
Fatigue	48.8	10.9	6,E-11
Shortness of breath	46.5	6.6	6,E-23
Aches	41.9	8.2	2,E-14
Anosmia/ageusia	39.5	2.3	5,E-44
Muscle pain	37.2	10.4	3,E-08
Sore throat	34.9	14.7	3,E-04
Headaches	32.6	10.1	2,E-06
Rhinorrhea	30.2	16.6	0.02
Chest pain	25.6	6.3	6,E-17
Diarrhea	23.30	8.4	0,0006
Abdominal pain	20.9	6.8	0,0004
Loss of balance	14.0	4.0	0,001
Nausea	14.0	3.8	0,0009
Appetite loss	11.6	1.1	2,E-09
Skin rashes	7.0	4.9	0.52
Irritated eyes	4.7	6.0	0.70

*Definition of ECDC

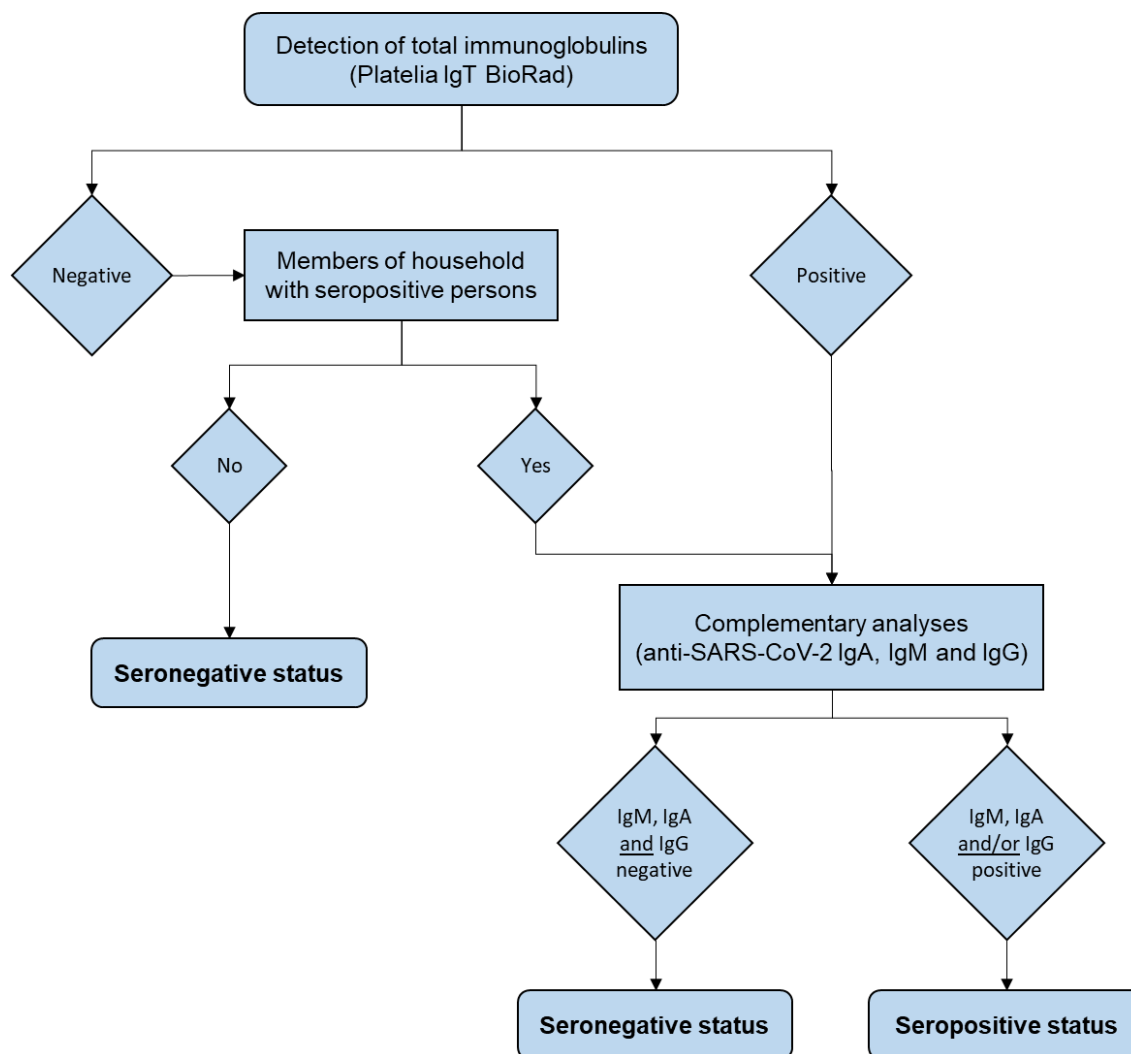
491

492

493

494

495 Figure 1. Flow of serology testing in the study.



496

497

498

499 Figure 2: Flow of participants in the study.

500

501 256 770 people in the Grand Nancy Metropolitan
502 area

503

504 6094 people of the Grand Nancy Metropolitan
505 area invited to participate with all members of the
506 household

507 2316 unsolicited (wrong addresses, death etc.)
508 3538 people did not respond
509 71 people refused
510 141 people contacted but did not visit

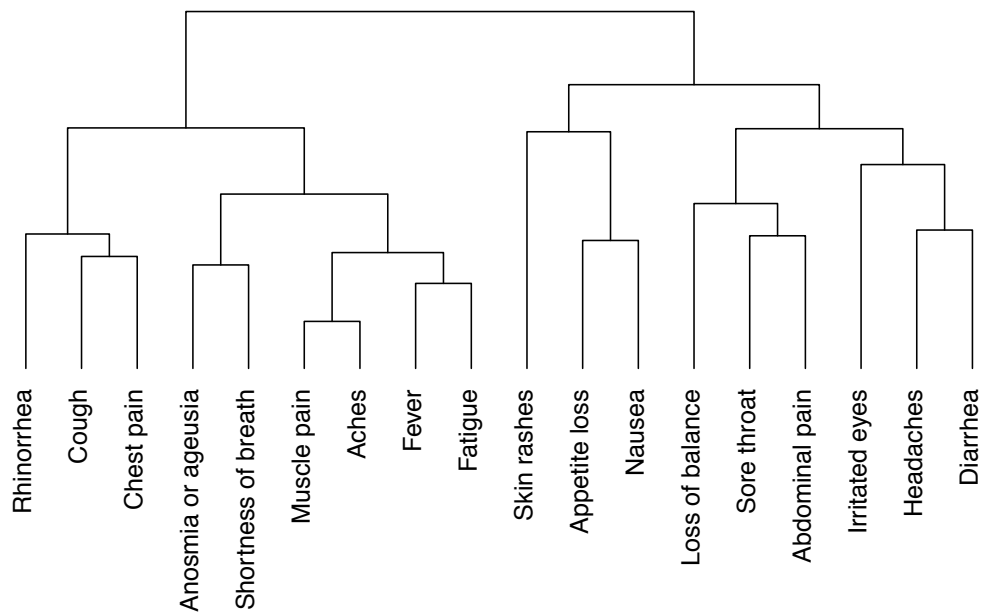
511 1142 households with planned inclusion visit

512 31 households did not participate in the visit

513

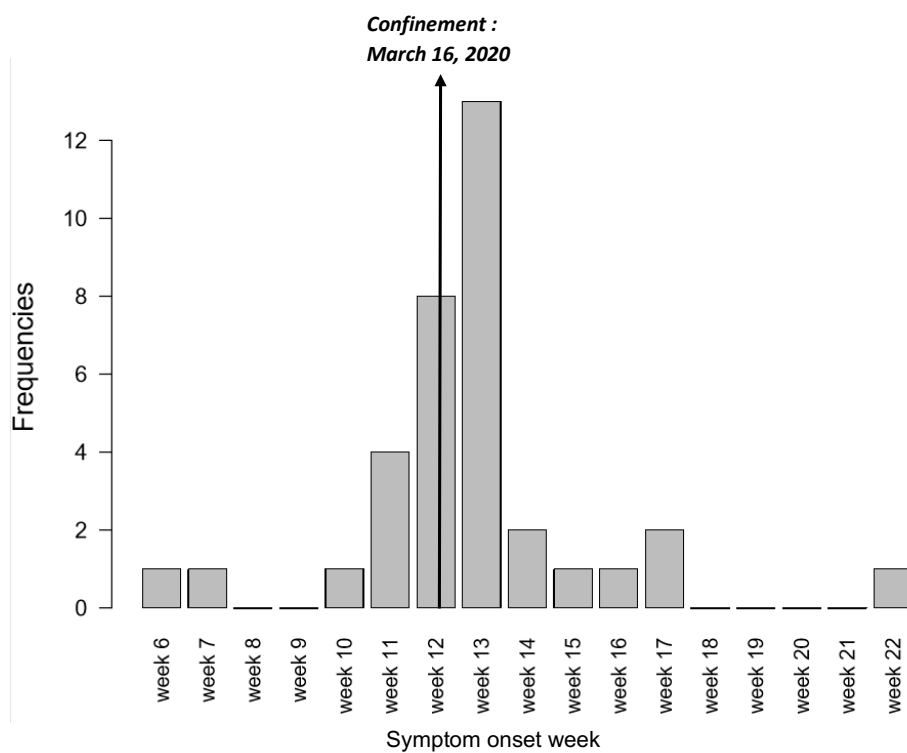
1111 households participated (2006 individuals)

514 Figure 3: Dendrogram of symptoms in seropositive individuals (n=43).



515

516 *Figure 4: Date of onset of symptoms in seropositive symptomatic individuals (n=36).*



517

518

519

520

521

522

523