

Economic evaluation of disease elimination: an extension to the net-benefit framework and application to human African trypanosomiasis

Marina Antillon^{a,b,2}, Ching-I Huang^{c,d}, Kat S Rock^{c,d,1}, and Fabrizio Tediosi^{a,b,1}

^aSwiss Tropical and Public Health Institute, Basel, Switzerland; ^bUniversity of Basel, Basel, Switzerland; ^cZeeman Institute, University of Warwick, Coventry, UK; ^dMathematics Institute, University of Warwick, Coventry, UK

This manuscript was compiled on April 30, 2021

1 **The global health community has earmarked a number of diseases**
2 **for elimination or eradication, and these goals have often been**
3 **praised on the premise of long-run cost-savings. However, decision-**
4 **makers must contend with a multitude of demands on health bud-**
5 **gets in the short- or medium-term, and costs-per-case often rise as**
6 **the burden of a disease falls, rendering such efforts beyond the cost-**
7 **effective use of scarce resources. In addition, these decisions must**
8 **be made in the presence of substantial uncertainty regarding the fea-**
9 **sibility and costs of elimination or eradication efforts. Therefore, an-**
10 **alytical frameworks are necessary to consider the additional effort**
11 **for reaching global goals, like elimination or eradication, that are be-**
12 **yond the cost-effective use of country resources. We propose a mod-**
13 **ification to the net-benefit framework to consider the implications**
14 **of switching from an optimal strategy, in terms of cost-per-burden-**
15 **averted, to a strategy with a higher likelihood of meeting the global**
16 **target of elimination of transmission by a specified date. We illus-**
17 **trate the properties of our framework by considering the economic**
18 **case of efforts to eliminate transmission of *gambiense* human African**
19 **trypanosomiasis (gHAT), a vector-borne parasitic disease in West**
20 **and Central Africa, by 2030.**

eradication | elimination | economic evaluation | mathematical modeling

1 **T**he successful eradication campaigns of smallpox and
2 rinderpest have curried political support for the elim-
3 ination or eradication of transmission (EEOT) of other dis-
4 eases. Thus far, regional elimination has been achieved for
5 land-transmitted rabies in Europe and for malaria in large
6 parts of the world. Yet, due to the strong correlation between
7 many of the diseases targeted for EEOT and poor sanitation,
8 health infrastructure, or overall material conditions, such dis-
9 ease campaigns are disproportionately focused in low-resource
10 settings, bringing to the fore important questions about the
11 efficiency of EEOT efforts (1, 2).

12 On the one hand, expensive EEOT interventions are of-
13 ten justified on the basis of future cessation of activities; one
14 front-loads the expenses on a disease on the premise that
15 public health activities can cease in the not-too-distant fu-
16 ture, at which time investments will be recovered. Smallpox
17 eradication is claimed to have saved, within just a few years,
18 billions of dollars (3). However, falling just short of EEOT
19 could be the worst of all possible scenarios: one has diverted
20 ever-increasing resources from other purposes, but one cannot
21 cease activities and recover investments. In part because of the
22 risk of failure and in part because of the accelerating per-case
23 cost of campaigns near the end-game, such efforts might not
24 be considered an efficient use of resources from the perspective
25 of decision-makers with limited budgets contending with a

26 variety of health challenges. For instance, there were 22–176
27 wild-type poliomyelitis cases reported yearly between 2016–
28 2020 but eradication campaigns cost approximately \$1B due
29 to the continued need for surveillance and vaccination globally
30 (4, 5). Guinea worm disease (GWD) caused only 54 cases
31 in 2019, yet it is the subject of campaigns that cost approxi-
32 mately \$30M (6, 7). The eradication targets of both diseases
33 have experienced delays of 23 years and 10 years, respectively,
34 therefore stalling the promise to recover investments (7, 8).

35 To explore, scrutinize, and provide insights into questions
36 surrounding EEOT, the epidemiology and health economics
37 fields have a rich toolbox that captures the non-linear transmis-
38 sion dynamics, temporal features, and economic implications
39 of disease control. Separately, a few studies have tried to
40 grapple with questions around the economic implications of
41 EEOT by employing game theoretic approaches (3, 9, 10).
42 These studies have designated different levels of coverage (i.e.
43 vaccine coverage) necessary for “control” and EEOT, and the
44 difference in costs between “control” and EEOT strategies
45 constitutes the price for elimination (3, 9, 10). While making
46 the problem theoretically tractable, the application is quite
47 narrow: in practice, addressing the burden of a disease may
48 require various distinct activities, and parsing the activities
49 that contribute uniquely to “control” or EEOT is not always

Significance Statement

Various diseases are earmarked for elimination by the global health community. While the health economic implications of elimination have been discussed before, the combination of uncertainty, cost-effectiveness in terms of cases averted, and elimination in the face of rising per-case costs has not been tackled before. We propose an approach that considers the tension between the dual objectives of cost-effectiveness and elimination while incorporating uncertainty in these objectives. We apply our method to strategies against human African trypanosomiasis in three settings, but this method could be directly applied to simulation-based studies of the cost-effectiveness of other disease elimination efforts. The method yields common metrics of efficiency when stakeholders have different objectives.

M.A. performed the formal analysis, created visualizations. M.A., K.S.R. and F.T. conceptualized the study and wrote the original draft. K.S.R. and F.T. acquired funding and supervised the study. C.H. performed simulations. All authors reviewed and edited the final draft.

The authors declare no conflict of interest.

¹ K.S.R. contributed equally to this work with F.T.

² To whom correspondence should be addressed. E-mail: marina.antillon@swisstph.ch

possible, as each activity contributes to both objectives to varying degrees.

Moreover, there is a lot of uncertainty in whether strategies lead to EEOT. In practice one cannot purchase EEOT with certainty, as GWD and polio have shown, one merely invests in activities that are conducive to EEOT, and therefore, the absence of probabilistic thinking in previous literature fails to capture a key component of the decision-making process. Frameworks with multiple objectives are exceedingly rare, and while some work has been done to consider policy analyses of stakeholders with differing fundamental objectives within a modelling framework (i.e. Probert *et al.* (11)), such approaches have seldom been developed for cost-effectiveness analyses (12) and never for analyses taking into account EEOT objectives.

Here we develop a framework that can handle 1) strategies that have different probabilities of EEOT, 2) where activities are not easily classified as exclusively “control” or “elimination” activities, 3) and where multiple objectives – specifically cost-per-DALY-averted and EEOT – are transparently considered. We extend the net-benefit framework, useful for decision-analysis in the presence of uncertainty, in order to evaluate cost-effectiveness of public health strategies while explicitly outlining the ‘premium’ of elimination, or the additional resources that are necessary to bring a country’s activities in line with global goals. One important feature of our framework is that it is operationalized within a probabilistic simulation framework, which makes it a simple extension to ubiquitously used approaches for decision analysis in the face of uncertainty, thereby being applicable in a wide array of situations.

We then apply our new framework to *gambiense* human African trypanosomiasis (gHAT) in three distinct regions of the Democratic Republic of Congo (DRC). The three regions highlight the strengths of our framework and its applications under different circumstances: circumstances of certainty, uncertainty, and where more than two strategies are reasonable candidates to abate disease burden and interrupt disease transmission.

Background. Our objective is to introduce an extension of the net-benefit framework to account for the resource implications of aligning potentially incongruous objectives of efficiency and EOT.

The keystone metric of value-for-money in cost-effectiveness analysis is the incremental cost-effectiveness ratio (ICER), which we touch on briefly as a point of departure for the net-benefit framework. The ICER is defined as the ratio of the difference in costs, ΔC , and the difference in health effects, ΔE of two interventions:

$$\text{ICER} = \frac{\Delta C}{\Delta E}$$

where the change in costs and health effects are computed as the net difference in costs and effects between strategies. Effects are usually denominated in disability-adjusted life-years (DALYs), a metric that is comparable across diseases. For the purpose of our analysis, the effects will be distinguished between DALYs and the probability of elimination of transmission (EOT).

Between two strategies, a second strategy will be considered cost-effective compared to the first (the comparator strategy) if

Table 1. Contextualizing willingness-to-pay values ($\lambda_{\text{DALY}}^{\text{WTP}}$) for low-income settings.

$\lambda_{\text{DALY}}^{\text{WTP}}$	Rationale
\$0	This is cost-saving or cost-neutral over the chosen time horizon of the analysis. It should be noted that annual expenditure or budgets not necessarily static across the whole period for all (or any) strategies.
\$250	Two studies that modelled the real investments made across countries estimated that the investments in DRC are \$5–\$230 per DALY averted in 2013 US\$(18) or \$54–\$69 per DALY averted in 2015 US\$ (19). We rounded up to \$250 for convenience.
\$500	Approximately equivalent to the annual gross national income (GDP) of DRC in 2018, which was the definition of a “very cost-effective” strategy as delineated in the WHO CHOICE program (20).
\$1500	Approximately equivalent to three times the annual gross domestic product (GDP) of DRC, which was the definition of a “cost-effective” strategy as delineated in the WHO CHOICE program (20).

the ICER does not exceed a health planner’s willingness-to-pay (λ^{WTP}) per DALY averted (13, 14).

$$\text{ICER} = \frac{\Delta C}{\Delta \text{DALYs}} \leq \lambda^{\text{WTP}}$$

The health planner’s λ^{WTP} per DALY averted is equivalent to the ICER of the least efficient strategy (the strategy with the highest ICER) in the health portfolio (15–18). Recently the World Health Organization (WHO) has advocated that cost-effectiveness results should be shown at a range of WTP values; Table 1 describes select values in the context of DRC, the country that will be the subject of our examples.

Not surprisingly, uncertainty in costs and DALYs exists, in particular with regards to diseases in populations that are difficult to study or diseases that have been historically neglected. There exists a literature devoted to the difficulties of accounting for parameter uncertainty when calculating ICERs while remaining consistent with the economic principles on which cost-effectiveness is grounded, primarily because ICERs are ratios (13, 21, 22). The net-benefit framework was therefore developed to circumvent some of the issues surrounding ICERs and uncertainty. The NMB is a simple arithmetic rearrangement of the ICER into a linear additive formulation:

$$\frac{\Delta C}{\Delta \text{DALYs}} \leq \lambda^{\text{WTP}}$$

$$\Delta C \leq \lambda^{\text{WTP}} \times \Delta \text{DALYs}$$

$$0 \leq \lambda^{\text{WTP}} \times \Delta \text{DALYs} - \Delta C$$

$$0 \leq \text{NMB}(\lambda^{\text{WTP}}).$$

where λ^{WTP} is the a monetary value for DALYs avoided. The linear additive formulation circumvents the technical issues with samples of ratios (22). Given a Monte Carlo sample of N iterates of the disease and cost model, a strategy is preferred over the comparator if the expected NMB exceeds zero:

$$0 \leq \mathbb{E}(\text{NMB}(\theta_i, \lambda^{\text{WTP}}))$$

where θ is a the parameter vector and $i \in \{1, \dots, N\}$ are the iterates of each parameter. In a multiple-strategy decision

analysis between J interventions, the preferred strategy is the strategy that maximizes $\mathbb{E}(\text{NMB}(\theta_i, \lambda^{\text{WTP}}))$:

$$\operatorname{argmax}_{j \in 1:J} \mathbb{E}(\text{NMB}(\text{Strat } j, \theta_i | \lambda^{\text{WTP}}))$$

the differences refer to the difference between the comparator strategy ($j = 1$) and any alternative strategy $j \in 2 : J$ in the analysis.

Simultaneously, the framework allows for a probabilistic interpretation of cost-effectiveness by conditioning on λ^{WTP} :

$$\mathbb{P}(\text{Strat } j \text{ is CE} | \lambda^{\text{WTP}}) = \frac{1}{N} \sum_{i=1}^N \mathbb{M}(j, \theta_i)$$

where

$$\mathbb{M}(j, \theta_i) = \begin{cases} 1 & \operatorname{argmax}_{j \in 1:J} \text{NMB}(\text{Strat } j, \theta_i | \lambda^{\text{WTP}}) \\ 0 & \text{Otherwise} \end{cases}$$

The algorithm therefore presents a measure of certainty that the strategy with the highest expected NMB is optimal over all other strategies, given by the proportion of samples where the strategy has the highest NMB of all strategies (13, 23).

The value judgements implied here are quite simple: the only relevant values are net costs (including the benefit of cost savings for the program by averted disease) and DALYs averted. Other considerations not accounted for include: the socioeconomic distribution of the beneficiaries vs remaining disease victims, ethical considerations, or if a pivotal threshold for disease evolution, such as re-emergence or eradication can be reached (24).

Economic evaluation framework for multiple objectives. Our proposal makes explicit the relationship between the WTP of dual objectives for averting disease burden, denominated in DALYs averted, and elimination, while taking into account the uncertainty in achieving those objectives and the concomitant costs.

$$\begin{aligned} & \text{Net Monetary and Elimination Benefits (NMEB}(\theta_i)) \\ & = 100\lambda_{\text{EOT}}^{\text{WTP}} \times \Delta \mathbb{I}_{\text{EOT}}(\theta_i) + \lambda_{\text{DALY}}^{\text{WTP}} \times \Delta \text{DALYs}(\theta_i) - \Delta C(\theta_i) \end{aligned}$$

where the indicator function, $\Delta \mathbb{I}_{\text{EOT}}$ is 1 if EOT is achieved by only one strategy and 0 if neither or both strategies achieve EOT (for parameter set θ_i and strategy j):

$$\Delta \mathbb{I}_{\text{EOT}}(\theta_i) = \mathbb{I}_{\text{EOT}}^{\text{strat B}}(\theta_i) - \mathbb{I}_{\text{EOT}}^{\text{strat A}}(\theta_i).$$

The use of $100\lambda_{\text{EOT}}^{\text{WTP}} \times \Delta \mathbb{I}_{\text{EOT}}(\theta_i)$ incorporates the WTP to raise the probability of elimination. While the term $\lambda_{\text{DALY}}^{\text{WTP}}$ is interpreted as the highest price paid to avert an additional DALY, $\lambda_{\text{EOT}}^{\text{WTP}}$ is interpreted as highest price paid per additional point increase in the probability of elimination.

The linear additive scale allows us to decompose the resource expenditure into two portions: the portion that is justifiable based on disease burden averted and the portion of the expenditure that is justifiable by concerns about global goals. While elimination and disease control are not separable or independent, which is accounted for in the dynamic transmission model, the linear form in this formulations allows us to separate the elimination benefits related to disease control (decreasing DALYs) and all other benefits of elimination above and beyond averted disease burden. This circumvents the need to calculate C_{DALY} and C_{EOT} , which are rarely separable as no

activity will contribute to a reduction in one metric without impacting the other.

In a manner analogous to the traditional NMB, the strategy that ought to be implemented is indicated by:

$$\operatorname{argmax}_{j \in 1:J} \mathbb{E}(\text{NMEB}(\text{Strat } j, \theta | \lambda_{\text{DALY}}^{\text{WTP}}, \lambda_{\text{EOT}}^{\text{WTP}})),$$

and the probability that a strategy is cost-effective is

$$\mathbb{P}(\text{Strat } j \text{ is CE} | \lambda_{\text{DALY}}^{\text{WTP}}, \lambda_{\text{EOT}}^{\text{WTP}}) = \frac{1}{N} \sum_{i=1}^N \mathbb{M}(j, \theta_i)$$

where

$$\mathbb{M}(j, \theta_i) = \begin{cases} 1 & \operatorname{argmax}_{j \in 1:J} \text{NMEB}(\text{Strat } j, \theta_i | \lambda_{\text{DALY}}^{\text{WTP}}, \lambda_{\text{EOT}}^{\text{WTP}}) \\ 0 & \text{Otherwise} \end{cases}$$

Premium of elimination. A useful metric easily calculated from the formulation of NMEB is the *premium of elimination*. We begin with a simple context: if we assume there are two strategies, which are to reach elimination with 0% and 100% certainty respectively, and we suppose that the elimination strategy would not avert any additional DALYs over the non-elimination strategy (e.g. detection and treatment are superb), then the expected premium of elimination, given here by $\text{Premium}_{\text{EOT}}$, would equal the expected cost difference between the two strategies:

$$\mathbb{E}(\text{Premium}_{\text{EOT}}(\theta)) = \Delta \mathbb{E}(C(\theta))$$

However, in practice any two or more strategies are unlikely to avert the same number of DALYs; in fact, most often the elimination-prone strategy is likely to avert some additional DALYs, albeit at a potentially high cost. The health planner has a certain $\lambda_{\text{DALY}}^{\text{WTP}}$ for those additional DALYs that the elimination strategy averts, though perhaps not a WTP that would completely bridge the gap in costs between the two strategies. In such a case, the expected $\text{Premium}_{\text{EOT}}$ is:

$$\begin{aligned} \mathbb{E}(\text{Premium}_{\text{EOT}}(\theta)) & = \\ & \max\{\Delta \mathbb{E}(C(\theta)) - \lambda_{\text{DALY}}^{\text{WTP}} \times \Delta \mathbb{E}(\text{DALYs}(\theta)), 0\}. \end{aligned}$$

In other words, the more the health planner is willing to pay for DALYs averted, the lower the additional premium that will be paid for elimination.

If one strategy has both a higher probability of achieving the elimination and a relatively low incremental cost, then the premium of elimination is equal to zero, as no additional resources are needed to justify elimination beyond those resources traditionally considered to be efficient (cost-effective) to avert disease.

Premium of elimination and NMEB. The NMEB and the $\text{Premium}_{\text{EOT}}$ are linked as follows.

$$100\lambda_{\text{EOT}}^{\text{WTP}} \times \Delta \mathbb{I}_{\text{EOT}}(\theta_i) \geq \Delta C(\theta_i) - \lambda_{\text{DALY}}^{\text{WTP}} \times \Delta \text{DALYs}(\theta_i)$$

taking the expectation of both sides of the equations:

$$100\lambda_{\text{EOT}}^{\text{WTP}} \times \Delta \text{Pr}_{\text{EOT}}(\theta) \geq \mathbb{E}(\text{Premium}_{\text{EOT}}(\theta))$$

In other words, the premium of elimination must be smaller than the product of the between-strategy differential probability of EOT and the WTP for additional certainty of EOT. For instance, if the comparator strategy (strategy A) is the preferred strategy under the traditional NMB framework, then in order to select strategy B on the basis of its higher probability of elimination, the product of $\lambda_{\text{EOT}}^{\text{WTP}}$ and the differential probability must be at least as large as the $\text{Premium}_{\text{EOT}}$.

Table 2. Strategies for control and elimination of gHAT in a typical endemic health district.

Component Interventions	Strategy			
	Mean AS [‡]	Max AS	Mean AS & VC	Max AS & VC
Mean active screening	✓	✓	✓	✓
Additional active screening		✓		✓
Passive surveillance	✓	✓	✓	✓
Vector control			✓	✓
Treatment of cases	✓	✓	✓	✓

[‡] Status quo strategy.

¹ Passive screening (PS): gHAT screening that occurs in local health posts of patients who present themselves with specific gHAT symptoms.

² Active screening (AS): The examination of individuals in their village by mobile teams who screen and confirm cases.

³ Treatment: Detected cases (either active or passive) are referred to the district hospital for treatment according to WHO guidelines (26).

⁴ Vector control (VC): biannual deployment of tiny targets to control the population of tsetse. Our simulation assumes that the tsetse population decreases by 80% in the first year, consistent with field studies (27–29).

Premium of elimination, discount rates, and time horizons.

Inadequately chosen time horizons and discount rates would impact the size of the premium of elimination, presenting not the monetary value of additional benefits of elimination, but rather uncaptured savings. While the benefits of elimination or eradication could reach infinitely into the future, one does not generally include these infinite benefits or savings for two reasons. First, the principles of time-preference generally dictate that we apply a discount rate, which would make the costs and benefits more than two or three decades into the future worth almost zero in present-day terms. Even if no discounting were to be taken into account, most analyses of interventions of non-chronic infectious diseases have time horizons under 20 years, and picking a longer time horizon for our analysis would not allow comparability across diseases in a health planner’s portfolio (20). Lastly, it is recognized that lifetime rewards for current-day strategies against infectious diseases are difficult to incorporate as the state of epidemics several decades into the future can be influenced by factors that cannot be adequately predicted (25). Therefore, we caution against overly short time horizons or unusually high discount rates, as this could raise the premium of elimination (by the same token, unusually long time-horizons and low discount rates would lower the premium of elimination).

Results

Health outcomes, costs, and traditional ICERs. Using a joint transmission and cost model we made projections of the epidemiological impact the resource use over 2020–2040 of four strategies in three locations against gHAT (Table 2 provides an overview on the component interventions, while further details can be found in the Materials and Methods). In Region 1, success or failure of the 2030 elimination of transmission (EOT) goal is certain depending on the selected strategy, but in Regions 2 and 3 success and failure of the EOT goal is uncertain (Table 3).

If the status (comparator) strategy remains in place (Mean active screening, AS) there will be an average of 477 cases and 207 deaths in Region 1, 23 cases and 12 deaths in Region 2, and 65 cases and 32 deaths in Region 3. In terms of DALYs,

those incidence levels give rise to 3,939 DALYs in Region 1, 247 DALYs in Region 2, and 676 DALYs in Region 3. Under any strategy in all settings, the burden of disease is expected to decline, but strategies with VC are expected to expedite this decline substantially (see Fig S3).

Costs per year show that while strategies that include vector control (VC) are more costly in the short-run, the investments begin to yield returns after 2028 in Region 1, after 2025 in Region 2, and after 2030 in Region 3 (Fig S4). Costs are driven by AS activities, and when applicable, by VC activities, so the timing of cessation of these activities plays an important role in the ability of ambitious investments to be recovered (see Fig S5). Nevertheless, it is not certain that these strategies will yield cost-savings over a 20-year investment period, although total costs are only marginally higher compared to the comparator (Mean AS).

Net Monetary Elimination Benefits: where success and failure are certain.

The probability of EOT in Region 1 is shown in 1A and the results of our decision analysis under the traditional net benefits framework is shown in Figure 1B. After taking into account parameter uncertainty, our analysis shows that Mean AS has an 80% probability of having the minimum cost (optimal at $\lambda_{DALY}^{WTP}=0$). However, if $\lambda_{DALY}^{WTP}>258$, the strategy Mean AS & VC is optimal with 47–55% probability.

In Region 1, Mean AS has a 0% probability of EOT by 2030, whereas Mean AS & VC has 100% probability of EOT. The expected $Premium_{EOT}$, is shown in 1C. In a policy environment of low λ_{DALY}^{WTP} , any health planner must be able to justify the entire \$709,800 cost difference between Mean AS and Mean AS & VC on the basis of EOT alone. When DALYs are not valued monetarily ($\lambda_{DALY}^{WTP}=\$0$), the $Premium_{EOT}$ is simply equivalent to the difference in costs between the two strategies. If, for instance, $\lambda_{DALY}^{WTP}=\$100$, a health planner must be able to justify only a $Premium_{EOT}$ of \$434,400, as the other \$275,400 that would be justifiable for DALYs averted. In a policy environment of a $\lambda_{DALY}^{WTP}=\$300$, the strategy that reaches elimination is entirely justifiable on the health gains achieved (DALYs averted), and the $Premium_{EOT}$ is therefore \$0.

Fig 1C shows the optimal choice of strategy for a range of λ_{DALY}^{WTP} and λ_{EOT}^{WTP} values. In a policy environment where $\lambda_{DALY}^{WTP}=0$ and $\lambda_{EOT}^{WTP}=7,098$ per additional probability point of EOT, the optimal strategy guarantees elimination, as that is the λ_{EOT}^{WTP} that justifies the \$709,800 premium of elimination.

Net Monetary Elimination Benefits: where success and failure are uncertain.

Region 2 illustrates a setting in where the comparator strategy (Mean AS) has a 79% probability of EOT, and therefore the binary conception of “control” or “elimination” strategies fails to adequately capture the decision-maker’s dilemma.

The conditions for which an economically optimal strategy maximizes the probability of EOT is shown in Fig 2. If $\lambda_{DALY}^{WTP}=0$, a strategy that almost ensures EOT – Mean AS & VC – is optimal if $\lambda_{EOT}^{WTP}>10,684$ per additional percentage point, and the $Premium_{EOT}$ is \$229,000 (Table S3). If, however, $\lambda_{DALY}^{WTP}=\$500$, then the $Premium_{EOT}$ is \$158,000 and the $\lambda_{EOT}^{WTP}>7,377$. At $\lambda_{DALY}^{WTP}=1,500$, then $Premium_{EOT}$ decreases to \$16,000 and $\lambda_{EOT}^{WTP}=\$764$.

Our most complex setting, Region 3, is shown in Fig 3. Under the traditional net benefits framework, either the Mean AS

Table 3. Intermediate outcomes, cost-effectiveness, and elimination of transmission in three sample health zones.

	Mean AS	Max AS	Mean AS & VC	Max AS & VC
Region 1				
Cases	477 (144, 1,081)	463 (136, 1,047)	116 (41, 235)	120 (38, 270)
Deaths	207 (41, 614)	174 (36, 499)	54 (18, 115)	49 (16, 105)
DALYs	3,939 (886, 11,007)	3,336 (779, 9,161)	1,185 (405, 2,494)	1,077 (362, 2,280)
ΔDALYs	Comparator	602 (-191, 2,221)	2,754 (339, 8,765)	2,862 (382, 8,956)
Costs (USD, × 1000)	3,101 (2,153, 4,736)	4,023 (2,734, 6,308)	3,811 (2,464, 6,007)	4,284 (2,732, 6,731)
ΔCosts (USD, × 1000)	Comparator	921 (451, 1,619)	709.8 (-763.9, 2,765)	1,182 (-291.7, 3,415)
Pr. EOT	0	0	100	100
ΔPr. EOT	Comparator	0	100	100
Region 2				
Cases	23 (1, 79)	22 (0, 92)	9 (0, 41)	10 (0, 54)
Deaths	12 (1, 42)	8 (0, 28)	5 (0, 15)	4 (0, 12)
DALYs	247 (20, 803)	167 (2, 564)	106 (1, 318)	82 (1, 262)
ΔDALYs	Comparator	80 (-87, 366)	142 (-41, 551)	165 (-21, 597)
Costs (USD, × 1000)	1,029 (508, 1,841)	1,407 (637, 2,652)	1,258 (636, 2,068)	1,529 (743, 2,544)
ΔCosts (USD, × 1000)	Comparator	377.5 (-164.3, 1,105)	229 (-451.9, 933.8)	499.7 (-209.8, 1,335)
Pr. EOT	79	92	100	100
ΔPr. EOT	Comparator	13	21	21
Region 3				
Cases	65 (2, 224)	64 (1, 264)	27 (1, 84)	31 (0, 122)
Deaths	32 (1, 137)	19 (0, 89)	14 (0, 54)	10 (0, 44)
DALYs	676 (23, 2,809)	414 (4, 1,885)	336 (10, 1,245)	242 (3, 1,008)
ΔDALYs	Comparator	262 (-38, 1,133)	340 (-50, 1,684)	434 (-14, 1,926)
Costs (USD, × 1000)	970 (524, 1,552)	1,164 (573, 2,058)	1,622 (869, 2,793)	1,659 (882, 3,023)
ΔCosts (USD, × 1000)	Comparator	193.5 (-138.4, 599.4)	651 (16, 1,613)	689 (38, 1,763)
Pr. EOT	42	54	100	100
ΔPr. EOT	Comparator	12	58	58

346 or Max AS strategy are cost-effective at λ_{DALY}^{WTP} values consistent with historical investment levels in low-income countries (Fig 3C), but these strategies have only a 42% and 54% probability of EOT (Fig 3B). Without an investment in elimination justified by benefits that extend beyond the averted DALYs, achievement of EOT is uncertain.

347 At $\lambda_{DALY}^{WTP}=0$, then a decision-maker must have a $\lambda_{EOT}^{WTP} \geq$ 348 \$15,747 and incur a $Premium_{EOT}=\$194,000$ to bolster the 349 chances of elimination from 42% to 54% or $\lambda_{EOT}^{WTP} \geq \$11,210$ 350 and incur a $Premium_{EOT}=\$651,000$ to bolster the probability 351 of elimination from 42% to >99%. Therefore, as long as one 352 does not value DALYs averted, the switch from Mean AS to 353 Max AS would incur a lower premium, but switching to Mean 354 AS & VC would be more efficient on the basis of per-point 355 probability of reaching EOT (Fig 4 and Table S4).

356 If, however, the policy environment is one where 357 $\lambda_{DALY}^{WTP}=\$500$, then Mean AS & VC has become dominated 358 by both objectives: Max AS will avert more DALYs than 359 Mean AS & VC because it treats more extant infections in 360 the short-term, and Max AS & VC is more efficient at both 361 averting DALYs and raising the probability of EOT on a 362 per-point basis. To maximise the probability of EOT when 363 $\lambda_{DALY}^{WTP}=\$500$, one would deploy Max AS & VC, which has a 364 $Premium_{EOT}=\$472,000$, equivalent to $\lambda_{EOT}^{WTP}>\$8,934$. At 365 $\lambda_{DALY}^{WTP}=\$1,500$, the strategy Max AS is cost-effective, so the 366 $Premium_{EOT}$ of Max AS & VC is \$237,000 and $\lambda_{EOT}^{WTP}>\$5,172$. 367

372 Discussion

373 Much of the early literature about cost-effectiveness and 374 decision-making in the presence of uncertainty was about 375 analytical methods to do what is now more easily done with 376 simulation (14, 21, 30, 31). Although simulation of a wide array

of epidemiological and policy questions is ubiquitous, the interpretation of those simulations must rest within frameworks which decompose uncertainty and frame economic optimization in a manner that is in line with economic theory. The existing tools in the health economics toolbox generally answer the question “are public health efforts economically justified?” but when the global health community has set ambitious goals, such as elimination of infectious diseases, questions of resource use across different administrative levels (local, national, regional, and global) do not fit neatly in existing frameworks and one asks “to what degree are public health objectives economically justified by various objectives?” In the context of EEOT of infectious diseases, there may be a tension between EEOT objectives and maintaining an efficient use of scarce resources (32). This is particularly salient because the same resources – in-kind, capital, and financial – that vie for EEOT efforts could be diverted to address other urgent health goals.

394 We have presented an extension to the net benefits framework to inform decisions that contain an elimination objective that may stand at odds with concerns about efficient resource allocation. Our proposed framework explicitly models the additional premium for elimination activities in the presence of uncertainty.

395 The illustrative analysis shows that in Region 1, EOT is 396 nearly impossible with the comparator strategy, but EOT 397 is cost-effective at a relatively low $\lambda_{DALY}^{WTP}>\$300$, therefore 398 yielding $\lambda_{EOT}^{WTP}=\$0$ (Fig 1 and Table S2). The other regions 399 present more complicated scenarios: EOT is likely in Region 400 2 (79%) and moderately likely in Region 3 (42%) even with 401 the comparator strategy (Mean AS), but the value-for-money 402 in terms of EOT objectives vary by location. In Region 2 403 when $\lambda_{DALY}^{WTP}=\$0$, the $Premium_{EOT}=\$229,000$ and on a per- 404 405 406 407 408

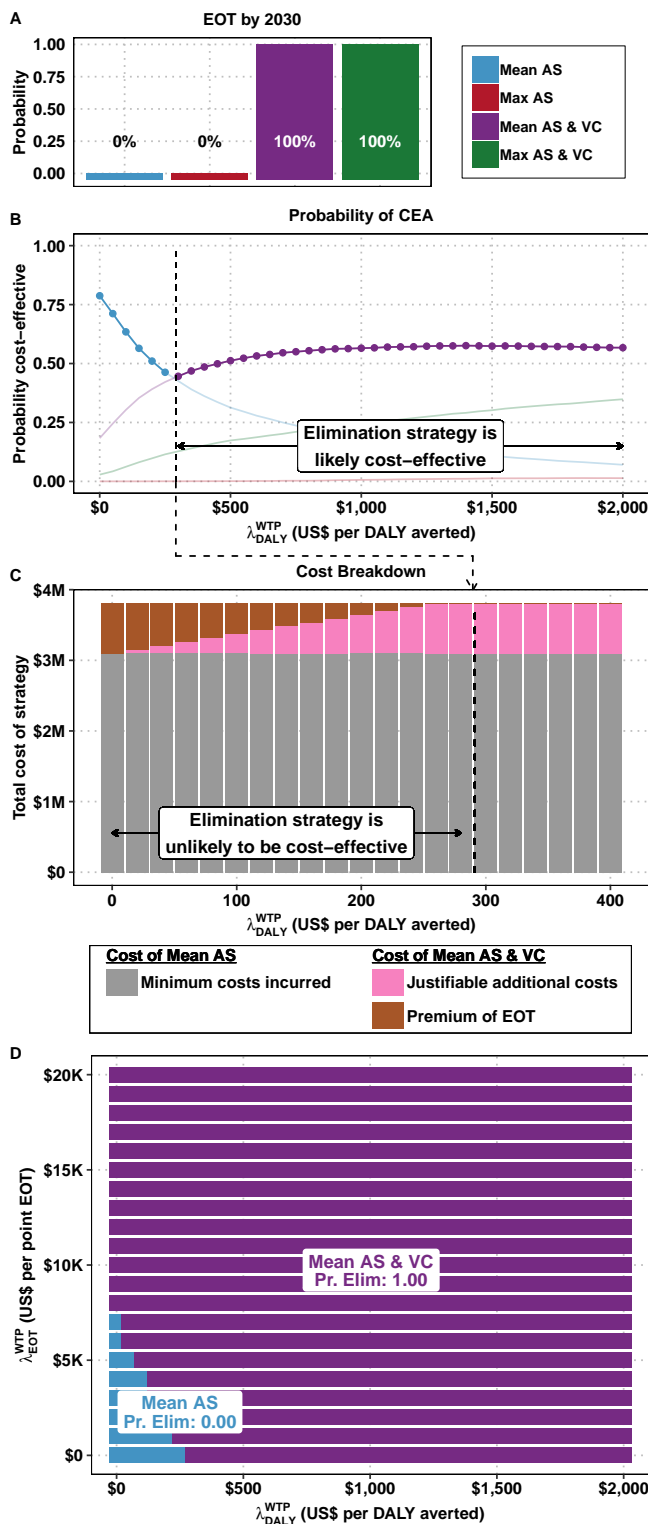


Fig. 1. Cost-effectiveness acceptability curves and cost breakdown for Region 1. A) the probability of EOT by 2030 for each strategy. B) The traditional cost-effectiveness acceptability frontiers (CEAFs). C) The total cost for a strategy that reaches elimination with 100% probability and the breakdown between minimum cost strategy, and justifiably additional costs and premium of elimination across λ_{DALY}^{WTP} values. D) Cost-effectiveness acceptability heatmaps (CEAH).

percentage-point basis $\lambda_{EOT}^{WTP} = \$10,684$ (Table S3). Region 3 has a moderate $Premium_{EOT}$ of \$651,000 for switching to a strategy sure to deliver EOT, but on a per-percentage-point basis, the cost (λ_{EOT}^{WTP}) is \$11,210 (Table S4). By contrast, although the $Premium_{EOT}$ is highest in Region 1 (\$709,800), it is the place where investments justified on the ground of elimination alone are the most efficient, $\lambda_{EOT}^{WTP} = \$7,098$. In short, while one could justify strategies that maximize the probability of elimination with a sufficiently high λ_{DALY}^{WTP} in Regions 1 and 2, that would not be possible in Region 3. In this way, if the current framework is employed simultaneously for various settings, as we have done here, or for multiple diseases marked for elimination, the results could aid in allocating resources to those locations or diseases where efforts for EOT are most efficient, starting where λ_{EOT}^{WTP} is lowest.

Existing literature on the economic evaluation of potential elimination strategies has been limited to diseases of person-to-person transmission, often considering one modality of prevention so that control vs elimination is a matter of the degree of coverage of vaccination (as with smallpox) or of treatment (as with HIV). This has made the analyses parsimonious, but it is unclear how such approaches generalize to real-world scenarios, where there are multiple modalities of control (3, 9, 10). In the case of gHAT as well as multiple other diseases, it is not clear that one activity alone is the key to elimination. Our framework therefore expands the categories of diseases that could be analyzed via a common set of metrics amenable to simulation analyses: λ_{DALY}^{WTP} , λ_{EOT}^{WTP} , and $Premium_{EOT}$. Alternatively, one could employ the same framework for another goal (i.e. reduction in inequality) to which there are benefits not captured by DALYs averted.

Our contention is that EOT is often not something that can be purchased outright, but rather something that can be invested on, and therefore the willingness-to-pay must be expressed in terms of the increased probability of reaching the goal. However, ascertaining the value of λ_{EOT}^{WTP} would probably be easier by asking stakeholders how much they would pay for elimination in a context where the probability of EOT is certain such that the probability is 0 or 1 with different strategies (like in region 1).

The EEOT of neglected tropical diseases is believed to drive towards achievement of several of the sustainable development goals (2, 33) as well as equity, as the elimination or eradication of a disease provides the same protection against that disease to individuals across the socioeconomic spectrum (34). Under the present framework, we contend that the investment on EEOT beyond its disease burden aspect (in terms of DALYs) are not only possible within campaigns that succeed, but that these benefits are achieved in relation to how close a strategy comes to elimination in terms of its probability of success. However, one does not necessarily need to enumerate each benefit of elimination and its relation to other social values, one only needs to have reasonable evidence of the presence of stakeholders that value EEOT to justify employing the approach we have presented here. Because the data to enumerate additional non-health benefits of elimination could be missing or weak, we propose an approach that circumvents such challenges by presenting the necessary lower bound for the willingness-to-pay for elimination.

Limitations. The total costs of EEOT will inevitably be affected by the size of the population that must be treated,

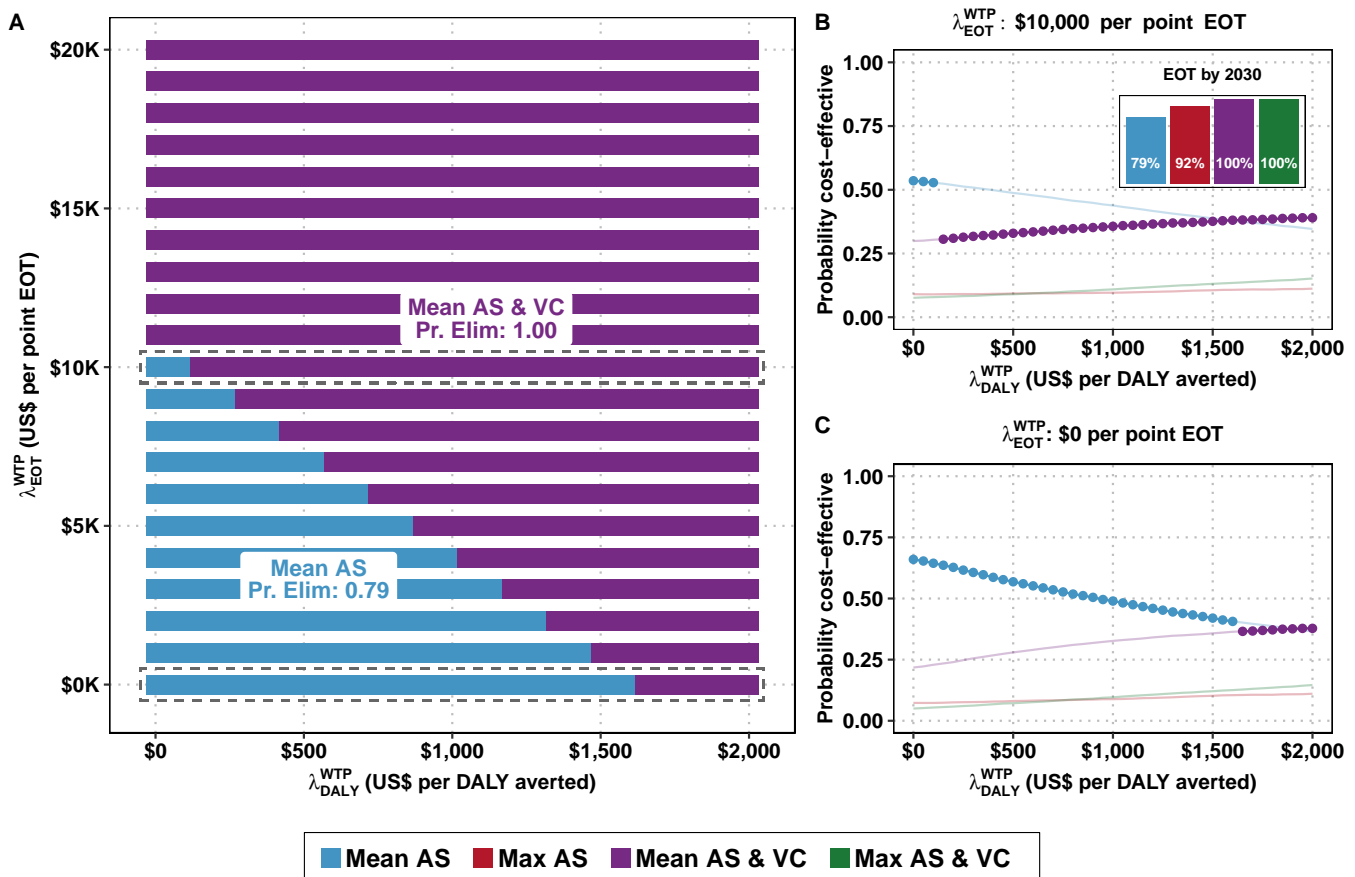


Fig. 2. Cost-effectiveness acceptability heatmaps for Region 2. A) Cost-effectiveness acceptability heatmap (CEAH). Along the x-axis is the cost-effectiveness threshold for averting disease burden, λ_{DALY}^{WTP} , and along y-axis is the cost-effectiveness threshold for elimination of transmission (EOT), λ_{EOT}^{WTP} , to raise the probability of EOT by 2030 by one percentage point. B–C) Cost-effectiveness acceptability frontiers (CEAFs). The inset in the top-right graph is the probability of each strategy’s EOT by 2030.

470 which involves the concepts of critical community size, the
 471 degree of connectivity of meta-populations, and importation
 472 probability—all factors that we do not examine here. Some
 473 diseases are worth eliminating in small patches because even
 474 one imported case will not re-establish transmission, while
 475 other diseases are only worth eliminating if elimination can
 476 be achieved throughout large interconnected networks of set-
 477 tlements (35–37).

478 Unlike many neglected tropical diseases, gHAT interven-
 479 tions have been very heterogeneous, even across the same
 480 administrative district, and so two regions with the same
 481 transmission in 2017 may have quite different underlying epi-
 482 demiology. We captured this uncertainty by utilising posterior
 483 parameters from various regions, however the present results
 484 are not designed to be representative of a single area. Tai-
 485 lored models, fitted to longitudinal case and intervention data
 486 will yield more reliable location-specific recommendations for
 487 gHAT strategies.

488 It is worth noting that the premium of elimination is not
 489 a subsidy, although this number could be used to inform
 490 a subsidy. Incurring outlays in the short-term may require
 491 financing products even in the context of a strategy that could
 492 be cost-saving in the long run.

493 While we do not address issues surrounding the elimination
 494 of diseases and their inequitable distribution, there is a budding
 495 literature regarding such concerns termed ‘equity-enhanced

496 CEA’, ‘extended CEA’, and ‘distributional CEA’ which look
 497 at how elimination and control can improve not only health
 498 but correct past inequities (32, 38–40).

499 **Conclusion.** In conclusion, with this method, one can attest
 500 whether health-resource efficiency, in terms of DALYs, is
 501 enough to justify efforts that bring about elimination. The dif-
 502 ference between the preferred strategy to reach each objective
 503 and the joint preferred strategy may set the basis for discus-
 504 sions on joint actions between stakeholders. In presenting
 505 such a flexible framework, it is tractable to perform analyses
 506 that could inform elimination priorities both within and across
 507 disease portfolios even when the benefits of elimination cannot
 508 be enumerated exactly.

509 **Materials and Methods**

510 **An application: human African trypanosomiasis.** *Gambiense* human
 511 African trypanosomiasis (gHAT) is a parasitic infection caused by
 512 *Trypanosoma brucei gambiense* and transmitted by tsetse (biting
 513 flies). gHAT infections are almost always fatal if untreated, and
 514 at the peak of the epidemic in the late 1990’s, it is suspected that
 515 up to tens of thousands of cases went undetected and untreated
 516 (41, 42). In 2012, the World Health Organization marked gHAT
 517 for elimination of transmission by 2030 (43). While gHAT has
 518 historically burdened 14 countries, the Democratic Republic of
 519 Congo (DRC) remains the most affected, accounting for over 74%
 520 of the worldwide caseload (44).

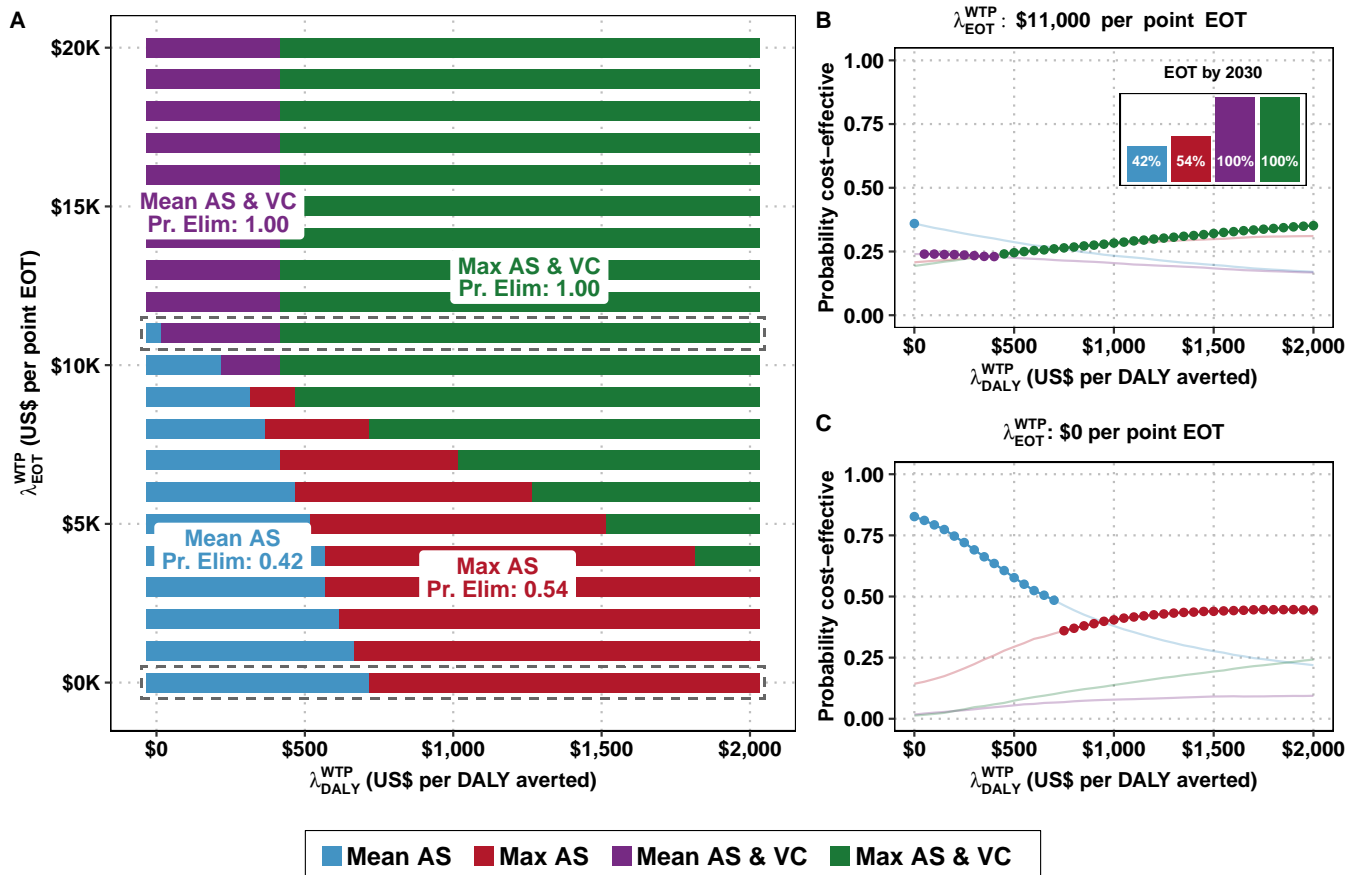


Fig. 3. Cost-effectiveness acceptability heatmaps for Region 3. A) Cost-effectiveness acceptability heatmap (CEAH). Along the x-axis is the cost-effectiveness threshold for averting disease burden, λ_{DALY}^{WTP} , and along y-axis is the cost-effectiveness threshold for elimination of transmission (EOT), λ_{EOT}^{WTP} , to raise the probability of EOT by 2030 by one percentage point. B–C) Traditional cost-effectiveness acceptability frontiers (CEAFs). The inset in the top-right graph is the probability of each strategy’s EOT by 2030.

521 Here we employed a previously published model of gHAT transmission fitted to historic data from three health zones in DRC: 522 Kwamouth, in Mai Ndombe province; Mosango, in Kwilu province; 523 Sia, in Kwilu province. Details about these health zones are in 524 SI section 1 and in a previous publication (45). Previously published 525 models are based on epidemiological data provided by the 526 WHO HAT Atlas (46). We selected these locations as they provide 527 interesting illustrative examples of the NMEB framework. 528

529 **Health effects, costs, and cost-effectiveness.** All modelling choices 530 are described in previous publications (45, 47, 48) and summarised 531 in the supplement (SI section 1). The model provided projections 532 under alternative strategies for 2020–2040 of future case-reporting 533 as well as unobservable features such as transmission events, disease 534 burden, and unreported deaths (47). Four strategies made up of 535 combinations of interventions are shown in Table 2 and illustrated 536 in SI Fig S1.

537 We then applied a model of the resource use for these strategies 538 (48) to estimate the costs and health burden accrued and averted 539 in terms of cases, deaths, and DALYs. Costs were denominated in 540 2018 US\$. Both costs and health effects are discounted at a rate of 541 3% in accordance with standard practice (20) and we performed 542 our main analysis from the perspective of the healthcare providers 543 collectively over a 20-year time-horizon (2020–2040).

544 Uncertainty was accounted for in two ways: 1) uncertainty in all 545 model parameters was propagated via Monte Carlo simulation, drawing 546 10,000 random samples from probability distributions chosen 547 to characterise the extant uncertainty in each parameter in accordance 548 with established practice (23), and 2) the model-simulated 549 stochasticity in case detections.

550 Because we are concerned with cost-effectiveness and uncertainty,

we construct cost-effectiveness acceptability frontiers (CEAFs), 551 which denote the optimal strategy (in terms of cost-effectiveness) 552 at a range of willingness to pay values (14). Lastly, we develop 553 the cost-effectiveness acceptability heatmaps (CEAHs), a form of 554 two-way CEAF with both λ (WTP) values as x- and y-axis and 555 the preferred intervention indicated by the color of the area of the 556 heatmap. We use no pre-defined thresholds for WTP values, as we 557 aim to provide guidance rather than prescription. 558

Acknowledgements

559 We wish to thank Dr. Ron Crump for original epidemiological 560 model fit to data (45), and Dr. Erick Miaka of the Programme 561 National de Lutte contre la Trypanosomiose Humaine 562 Africaine (PNLTHA) in DRC and Dr. Jose Ramón Franco 563 at the World Health Organization (WHO) for providing the 564 data (46) which was used for original model fitting (45) and 565 ongoing discussions on gHAT with our group. This work was 566 funded by the Bill and Melinda Gates Foundation (BMGF): 567 Human African Trypanosomiasis Modelling and Economic 568 Predictions for Policy (HAT MEPP) project (OPP1177824) and 569 the NTD Modelling Consortium (OPP1184344, OPP1156227, 570 and OPP1186851). 571

References

- 572 1. T Fürst, et al., Global health policy and neglected tropical diseases: Then, now, and in the 573 years to come. *PLOS Neglected Trop. Dis.* 11, e0005759 (2017). 574

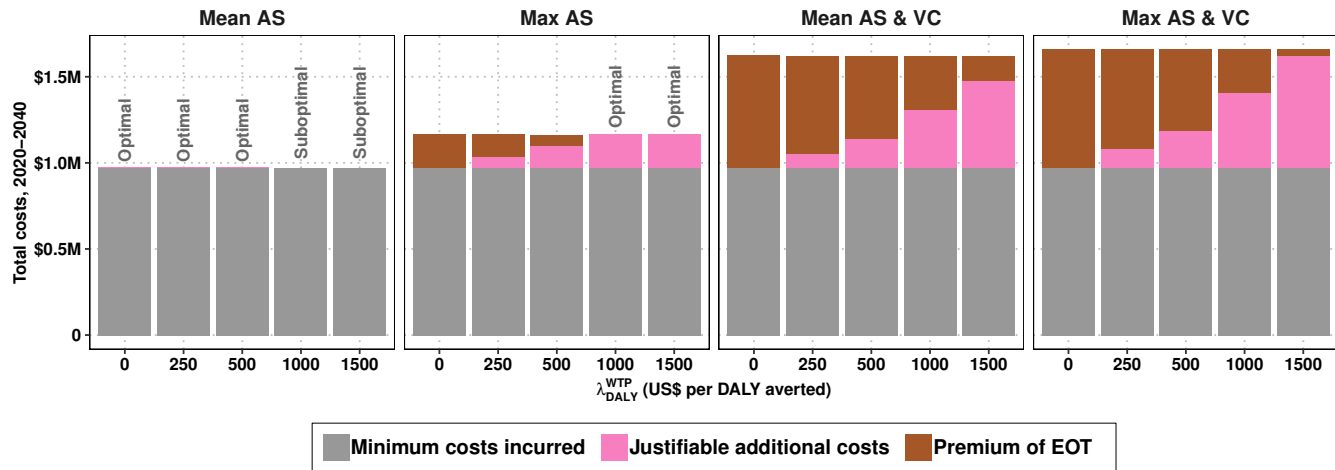


Fig. 4. Premium of elimination in Region 3, across different values of λ_{DALY}^{WTP} , contextualized in table 1.

575 2. M Bangert, DH Molyneux, SW Lindsay, C Fitzpatrick, D Engels, The cross-cutting contribution
576 of the end of neglected tropical diseases to the sustainable development goals. *Infect. Dis.*
577 *Poverty* **6**, 1–20 (2017).
578 3. S Barrett, Economic considerations for the eradication endgame. *Philos. Transactions Royal*
579 *Soc. B: Biol. Sci.* **368**, 20120149–20120149 (2013).
580 4. World Health Organization, Global Wild Poliovirus 2016–2021 (2021).
581 5. M Zimmermann, B Hagedorn, H Lyons, Projection of Costs of Polio Eradication Compared to
582 Permanent Control. *J. Infect. Dis.* **221**, 561–565 (2020).
583 6. C Fitzpatrick, et al., The cost-effectiveness of an eradication programme in the end game:
584 Evidence from guinea worm disease. *PLoS Neglected Trop. Dis.* **11** (2017).
585 7. L Roberts, Battle to wipe out Guinea worm stumbles. World Health Organization delays target
586 date for eradicating the parasite to 2030. *Nature* **574**, 157–158 (2019).
587 8. O Razum, et al., Polio: From eradication to systematic, sustained control. *BMJ Glob. Heal.* **4**,
588 1–4 (2019).
589 9. P Klepac, R Laxminarayan, BT Grenfell, Synthesizing epidemiological and economic optima
590 for control of immunizing infections. *Proc. Natl. Acad. Sci.* **108**, 14366–14370 (2011).
591 10. P Klepac, I Megiddo, BT Grenfell, R Laxminarayan, Self-enforcing regional vaccination agree-
592 ments. *J. Royal Soc. Interface* **13** (2016).
593 11. WJ Probert, et al., Decision-making for foot-and-mouth disease control: Objectives matter.
594 *Epidemics* **15**, 10–19 (2016).
595 12. S Verguet, DT Jamison, Health Policy Analysis: Applications of Extended Cost-Effectiveness
596 Analysis Methodology in Disease Control Priorities, Third Edition in *Disease Control Priorities:*
597 *Improving Health and Reducing Poverty*. pp. 157–166 (2017).
598 13. AA Stinnett, J Mullahy, Net Health Benefits: A New Framework for the Analysis of Uncertainty
599 in Cost-Effectiveness Analysis. *Med. Decis. Mak.* **18**, S68–S80 (1998).
600 14. E Fenwick, K Claxton, M Sculpher, Representing uncertainty: The role of cost-effectiveness
601 acceptability curves. *Heal. Econ.* **10**, 779–787 (2001).
602 15. E Marseille, B Larson, DS Kazi, JG Kahn, S Rosen, Thresholds for the cost-effectiveness of
603 interventions: Alternative approaches. *Bull. World Heal. Organ.* **93**, 118–124 (2015).
604 16. MY Bertram, et al., Disease control programme support costs: an update of WHO-CHOICE
605 methodology, price databases and quantity assumptions. *Cost Eff. Resour. Allocation* **15**, 21
606 (2017).
607 17. AJ Culyer, Cost-effectiveness thresholds in health care: a bookshelf guide to their meaning
608 and use. *Heal. Econ. Policy Law* **11**, 415–432 (2016).
609 18. B Woods, P Revill, M Sculpher, K Claxton, Country-Level Cost-Effectiveness Thresholds:
610 Initial Estimates and the Need for Further Research. *Value Heal.* **19**, 929–935 (2016).
611 19. J Ochalek, J Lomas, K Claxton, Estimating health opportunity costs in low-income and middle-
612 income countries: A novel approach and evidence from cross-country data. *BMJ Glob. Heal.*
613 **3** (2018).
614 20. World Health Organization, *Making Choices in Health: WHO guide to cost-effectiveness anal-*
615 *ysis*. (Geneva, Switzerland), (2003).
616 21. AA Stinnett, AD Paltiel, Estimating CE Ratios under Second-order Uncertainty. *Med. Decis.*
617 *Mak.* **17**, 483–489 (1997).
618 22. AH Briggs, Handling uncertainty in combined endpoints. *Pharmacoeconomics* **17**, 479–500
619 (2000).
620 23. A Briggs, K Claxton, M Sculpher, *Decision Modelling for Health Economic Evaluation*. (Oxford
621 University Press, Oxford, UK), First edition, (2006).
622 24. B Hofmann, et al., Revealing and Acknowledging Value Judgments in Health Technology
623 Assessment. *Int. J. Technol. Assess. Heal. Care* **30**, 579–586 (2014).
624 25. M Haacker, TB Hallett, R Atun, On time horizons in health economic evaluations. *Heal. Policy*
625 *Plan.* **35**, 1237–1243 (2020).
626 26. WHO Department of Control of Neglected Tropical Diseases, WHO interim guidelines for
627 the treatment of gambiense human African trypanosomiasis, (World Health Organization,
628 Geneva, Switzerland), Technical report (2019).
629 27. I Tirados, et al., Tsetse Control and Gambian Sleeping Sickness; Implications for Control
630 Strategy. *PLoS Neglected Trop. Dis.* **9**, e0003822 (2015).
631 28. F Courtin, et al., Reducing human-tsetse contact significantly enhances the efficacy of sleep-
632 ing sickness active screening campaigns: A promising result in the context of elimination.
633 *PLoS Neglected Trop. Dis.* **9**, 1–12 (2015).
634 29. MH Mahamat, et al., Adding tsetse control to medical activities contributes to decreasing
635 transmission of sleeping sickness in the Mandoul focus (Chad). *PLoS Neglected Trop. Dis.*
636 **11**, 1–19 (2017).
637 30. BA van Hout, MJ Al, GS Gordon, FFH Rutten, Costs, Effects and C / E-Ratios Alongside.
638 *Heal. Econ.* **3**, 309–319 (1994).
639 31. ZN Lothgren M, Definition, Interpretation and Calculation of Cost-effectiveness. *Heal. Econ.*
640 **630**, 623–630 (2000).
641 32. TC Bailey, MW Merritt, F Tediosi, Investing in justice: Ethics, evidence, and the eradication
642 investment cases for lymphatic filariasis and onchocerciasis. *Am. J. Public Heal.* **105**, 629–
643 636 (2015).
644 33. C Fitzpatrick, U Nwankwo, E Lenk, SJ de Vlas, DAP Bundy, An Investment Case for Ending
645 Neglected Tropical Diseases in *Major Infectious Diseases*, eds. KK Holmes, S Bertozzi, BR
646 Bloom, P Jha. (The World Bank, Washington, DC.), 3rd edition, pp. 411–431 (2017).
647 34. B Aylward, The Zero-Sum Goal. *Harv. Int. Rev.* **23**, 71–75 (2001).
648 35. MJ Keeling, BT Grenfell, Disease extinction and community size: Modeling the persistence
649 of measles. *Science* **275**, 65–67 (1997).
650 36. BT Grenfell, ON Bjornstad, BF Finkenstädt, Dynamics of measles epidemics: Scaling noise,
651 determinism, and predictability with the TSIR model. *Ecol. Monogr.* **72**, 185–202 (2002).
652 37. CJE Metcalf, K Hampson, AJ Tatem, BT Grenfell, ON Bjornstad, Persistence in Epidemic
653 Metapopulations: Quantifying the Rescue Effects for Measles, Mumps, Rubella and Whoop-
654 ing Cough. *PLoS ONE* **8**, 1–7 (2013).
655 38. M Asaria, S Griffin, R Cookson, Distributional cost-effectiveness analysis: A tutorial. *Med.*
656 *Decis. Mak.* **36**, 8–19 (2016).
657 39. MW Merritt, CS Sutherland, F Tediosi, Ethical Considerations for Global Health Decision-
658 Making: Justice-Enhanced Cost-Effectiveness Analysis of New Technologies for Try-
659 panosoma brucei gambiense. *Public Heal. Ethics* **11**, 275–292 (2018).
660 40. S Verguet, R Laxminarayan, DT Jamison, Universal Public Finance of Tuberculosis Treatment
661 in India: An Extended Cost-Effectiveness Analysis. *Heal. Econ.* **24**, 318–332 (2015).
662 41. M Ekwanzala, et al., In the heart of darkness: Sleeping sickness in Zaire. *Lancet* **348**, 1427–
663 1430 (1996).
664 42. D Mumba, et al., Prevalence of human African trypanosomiasis in the Democratic Republic
665 of the Congo. *PLoS Neglected Trop. Dis.* **5**, 1–5 (2011).
666 43. WHO Expert Committee on human African trypanosomiasis, Control and surveillance of hu-
667 man African trypanosomiasis: report of a WHO expert committee, Technical report (2013).
668 44. JR Franco, et al., Monitoring the elimination of human African trypanosomiasis at continental
669 and country level: Update to 2018. *PLoS Neglected Trop. Dis.* **14**, e0008261 (2020).
670 45. RE Crump, et al., Quantifying epidemiological drivers of gambiense human African Try-
671 panosomiasis across the Democratic Republic of Congo. *PLoS Comput. Biol.* **17**, e1008532
672 (2021).
673 46. PP Simarro, et al., The Atlas of human African trypanosomiasis: a contribution to global
674 mapping of neglected tropical diseases. *Int. journal health geographics* **9**, 57 (2010).
675 47. CI Huang, et al., Identifying regions for enhanced control of gambiense sleeping sickness in
676 the Democratic Republic of Congo (2020).
677 48. M Antillon, et al., Cost-effectiveness of sleeping sickness elimination campaigns in five set-
678 tings of the Democratic Republic of Congo (2020).