

1 **A SARS-CoV-2 lineage A variant (A.23.1) with altered spike has emerged and is**  
2 **dominating the current Uganda epidemic**

3 Daniel Lule Bugembe<sup>1\*</sup>, My V.T.Phan<sup>1,5\*</sup>, Isaac Ssewanyana<sup>2</sup>, Patrick Semanda<sup>2</sup>, Hellen  
4 Nansumba<sup>2</sup>, Beatrice Dhaala<sup>1</sup>, Susan Nabadda<sup>2</sup>, Áine Niamh O'Toole<sup>3</sup>, Andrew Rambaut<sup>3</sup>,  
5 Pontiano Kaleebu<sup>1,4</sup>, Matthew Cotten<sup>1,6</sup>

6  
7 **Affiliations**

8 1. MRC/UVRI & LSHTM Uganda Research Unit, Entebbe, Uganda

9 2. Central Public Health Laboratories of the Republic of Uganda, Kampala, Uganda

10 3. Institute for Evolutionary Biology, University of Edinburgh

11 4. Uganda Virus Research Institute, Entebbe, Uganda

12 5. EMC, Rotterdam

13 6. MRC-University of Glasgow Centre for Virus Research, Glasgow, UK

14 \*These authors contribute equally.

15  
16 Correspondence: Matthew Cotten (Matthew.Cotten@lshtm.ac.uk)

17  
18 **Keywords:** SARS-CoV-2, new variant, A.23; A.23.1, spike protein changes

19  
20 **Abstract**

21 The Severe Acute Respiratory Syndrome Coronavirus 2 (SARS-CoV-2) was first  
22 detected in March 2020 in Uganda. Recently the epidemic showed a shift of SARS-CoV-2  
23 variant distribution and we report here newly emerging A sub-lineages, A.23 and A.23.1,  
24 encoding replacements in the spike protein, nsp6, ORF8 and ORF9, with A.23.1 the major  
25 virus lineage now observed in Kampala. Although the clinical impact of the A.23.1 variant is  
26 not yet clear it is essential to continue careful monitoring of this variant, as well as rapid  
27

27 ~~assessment of the consequences of the spike protein changes for vaccine efficacy.~~  
medRxiv preprint doi: <https://doi.org/10.1101/2021.02.08.21251393>; this version posted February 11, 2021. The copyright holder for this preprint (which was not certified by peer review) is the author/funder, who has granted medRxiv a license to display the preprint in perpetuity. It is made available under a [CC-BY 4.0 International license](https://creativecommons.org/licenses/by/4.0/) .

## 28 **Main Text**

29           The novel Severe Acute Respiratory Syndrome Coronavirus 2 (SARS-CoV-2)(1) and  
30 the associated disease Coronavirus Disease 2019 (COVID-19)(2)(3) continue to spread  
31 throughout the world, causing >100 million infections and >2 million deaths ([Johns Hopkins](#)  
32 [COVID-19 Dashboard](#)). Genomic surveillance has played a key role in the responses to the  
33 pandemic; particularly, sequence data from SARS-CoV-2 provide information on the  
34 transmission patterns and the evolution of the virus as it enters new regions and spreads. As  
35 COVID-19 vaccines become available, monitoring SARS-CoV-2 genetic changes, especially  
36 changes at epitopes with implications for immune escape is crucial. A detailed classification  
37 system has been defined to help monitor SARS-CoV-2 as it evolves(4) and novel virus  
38 sequences first classified into 2 main phylogenetic lineages A and B representing the  
39 earliest divergence of SARS-CoV-2 in the pandemic and then into sub-lineages within these.  
40 Several Variants of Concern (VOCs) have emerged and spread with implications to  
41 compromise vaccine efficacy and/or therapeutic antibody treatments. These VOCs include  
42 lineage B.1.1.7 first identified in the UK (5), B.1.351 in South Africa (6) and lineage P.1  
43 (B.1.1.28.1) in Brazil (7). The novel sub-lineage A (A.23.1) reported here encodes multiple  
44 spike, nsp6, ORF8 and ORF9 protein changes, and some of the replacements are predicted  
45 to be functionally similar to those observed in lineage B VOCs.

46

## 47 **Status of the SARS-CoV-2 epidemic in Uganda**

48           The first SARS-CoV-2 infection in Uganda was detected in March 2020. Initially the  
49 virus was detected among international travellers until passenger flights were stopped in late  
50 March 2020, a second route of virus entry was with truck drivers entering from adjacent  
51 countries (8). Since August 2020, community transmission has dominated the Uganda case  
52 numbers. By end of January 2021 detected case count in Uganda is 39,000, with 318 deaths  
53 attributed to SARS-CoV-2 infection. The SARS-CoV-2 infection has spread throughout the

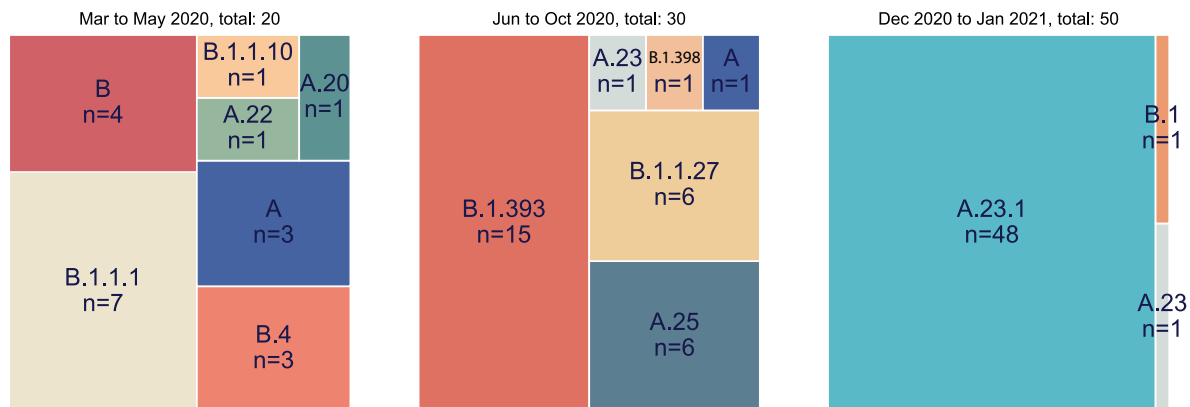
54 country, however the Kampala area is a major centre of virus infection where 60-80% of the  
55 daily new cases have been identified during the months of June 2020 to January 2021  
56 ([Uganda COVID-19 Daily Situation Report](#)). We have continued our efforts to generate  
57 SARS-CoV-2 genomic sequence data to monitor virus movement and changes (8).

58

### 59 **Changes in prevalence of lineage A viruses**

60 The genomes were classified into Pango lineages(4) using the Pangolin module  
61 pangoleARN (<https://github.com/cov-lineages/pangolin>) and into NextStrain clades using  
62 NextClade (9) (<https://clades.nextstrain.org/>). Across the entire epidemic, 80 (39%) strains  
63 belonged to the major lineage B whereas 123 (61%) strains were classified as lineage A  
64 (Supplementary Table 1). This distribution of lineages changed dramatically over the course  
65 of the year. A clear feature of the earlier COVID-19 epidemic in Uganda was the diversity of  
66 viruses found throughout the country attributed to frequent flights into Uganda from Europe,  
67 UK and Dubai (with origins further east); this is reflected in the range of lineages seen from  
68 March to May 2020 in the Kampala region (Figure 1, left panel). After passenger flights were  
69 limited in March, the virus was still able to enter via land travel, primarily with truck drivers.  
70 Uganda is landlocked country, characterised by its important geographical position, i.e. the  
71 crossing of two main routes of the Trans-Africa Highway in East Africa. The essential nature  
72 of produce and goods transport, therefore, resulted in potential virus movement from/to  
73 Kenya, South Sudan, DRC, Rwanda and Tanzania. In the period of June to October 2020  
74 characterised by truck driver movement and no flights, lineage B.1 strains predominated,  
75 similar to pattern observed in Kenya(10) (Figure 1 middle panel). Given the diversity of virus  
76 lineages found in the country from March until October 2020, it was unexpected that by late  
77 December 2020 to January 2021 almost exclusively lineage A viruses (N=49) were found in  
78 Kampala with only one B.1 (Figure 1 right panel). In all time periods, the SARS-CoV-2  
79 positive sample were obtained from 9 or more clinical locations throughout the Kampala

80 region indicating that the differences are unlikely to be due to sampling different  
81 subpopulations in the city at different times.



82

83 **Figure 1 SARS-CoV-2 lineage diversity Kampala.** All full genomes from the Kampala area  
84 were lineage typed using the pangolin resource (<https://github.com/cov-lineages/pangolin>)  
85 Lineage counts were stratified into three collection periods (March-May 2020, June-October  
86 202 and December 2020 to January 2021). The percentage of each lineage within each set  
87 was plotted as a treemap using squarify (<https://github.com/laserson/squarify>)with the size of  
88 each sector proportional to the number of genomes, genomes numbers are listed with "n=".  
89

## 90 Virus sequence diversity including fatal cases

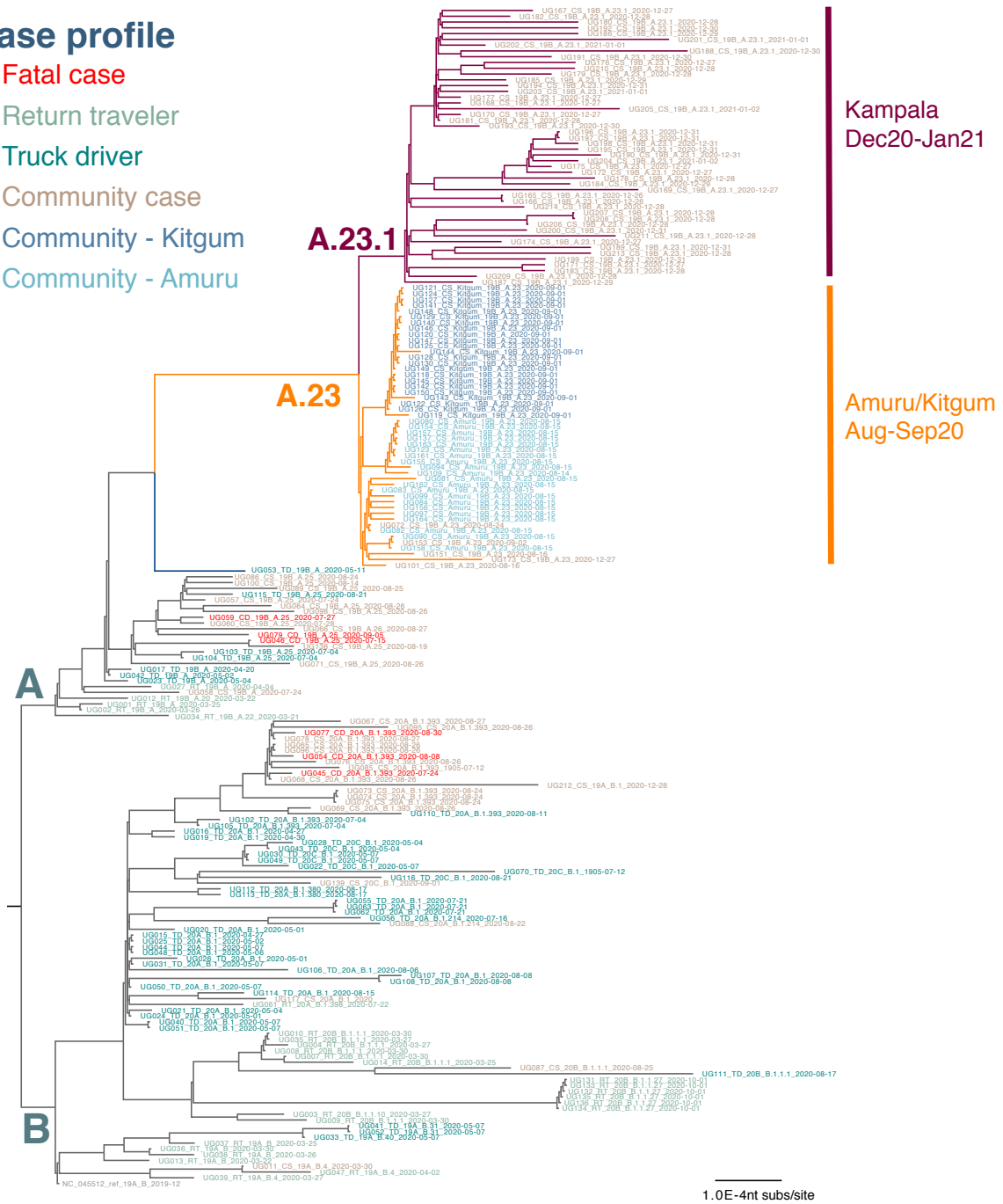
91 To monitor the epidemic in more detail, full genome SARS-CoV-2 sequences were  
92 generated from SARS-CoV-2 positive samples in Uganda using 1500bp amplicon followed  
93 by MinION sequencing using modified 1500 bp amplicon method(11). All newly and  
94 previously generated genomes that are complete and high-coverage (N=203) were used to  
95 construct a maximum-likelihood phylogenetic tree (Figure 2). Important details to note: the  
96 genome sequences from 6 lethal Ugandan cases belonged to two lineages A.25 and

97

B.1.393 (Figure 2).

**Case profile**

- Fatal case
- Return traveler
- Truck driver
- Community case
- Community - Kitgum
- Community - Amuru



98

99 **Figure 2. Maximum-likelihood phylogenetic tree comparing all available complete and**  
 100 **high-coverage Uganda sequences (N=203).** Strain names are coloured according to the  
 101 case profile (community: light brown, truck driver: dark green, return traveller: light green,  
 102 lethal cases: red). The clusters from the Amuru (light blue), Kitgum (dark blue) and the  
 103 recent community Kampala genomes are indicated. The tree was rooted where lineages A  
 104 and B were split. The branch length is drawn to the scale of number of nucleotide  
 105 substitutions per site, indicated in lower right.

106

107 Of note, the SARS-CoV-2 lineage A is far less prevalent than lineage B in Europe,  
108 UK and USA as compared to Asia. The presence of lineage A viruses from lethal and  
109 community cases throughout Uganda indicates that this lineage is circulating in Uganda and  
110 capable of producing a severe infection. Several variant lineages were observed at low  
111 frequencies and only briefly and may have undergone apparent extinction, similar to patterns  
112 observed in the UK (12) and Scotland (13).

113 A genome identified from a truck driver is often observed basal to each cluster  
114 (Figure 2), suggesting the importance of this route in the introduction and spread of the virus  
115 into Uganda. Additionally, genomes identified from truck drivers could provide important  
116 information, especially those truck drivers coming from ports of entries (POEs) bordering  
117 countries with limited genomic data on contemporary SARS-CoV-2 circulation, such as  
118 South Sudan and Tanzania (data not shown). As mentioned earlier, most of genomes  
119 identified from truck drivers coming from POEs bordering Kenya belonged to lineage B.1,  
120 consistent with the pattern reported in Kenyan cases (Supplementary Table 1). On the other  
121 hand, genomes identified from truck drivers from Tanzania, albeit small numbers, belonged  
122 to both A and B lineages (data not shown). From the small number of genomes from the  
123 Elegu POE bordering South Sudan, the viruses belonged to lineage A and B.1; the lineage A  
124 strain from this truck driver (strain UG053) was basal to the newly emergent A.23 variant  
125 (discussed below). Continued monitoring of all truck drivers coming in and out of the Uganda  
126 is therefore very important and would help us to better understand the inland cross-country  
127 import and export and circulation of strains in this part of world, where (large scale) genomic  
128 surveillance is scarce and resource is limited.

129

### 130 **SARS-CoV-2 outbreaks in prisons**

131 Outbreaks of SARS-CoV-2 infections were reported in the Amuru and Kitgum prisons  
132 in August 2020(14),(15). The SARS-CoV-2 genome sequences identified from individuals

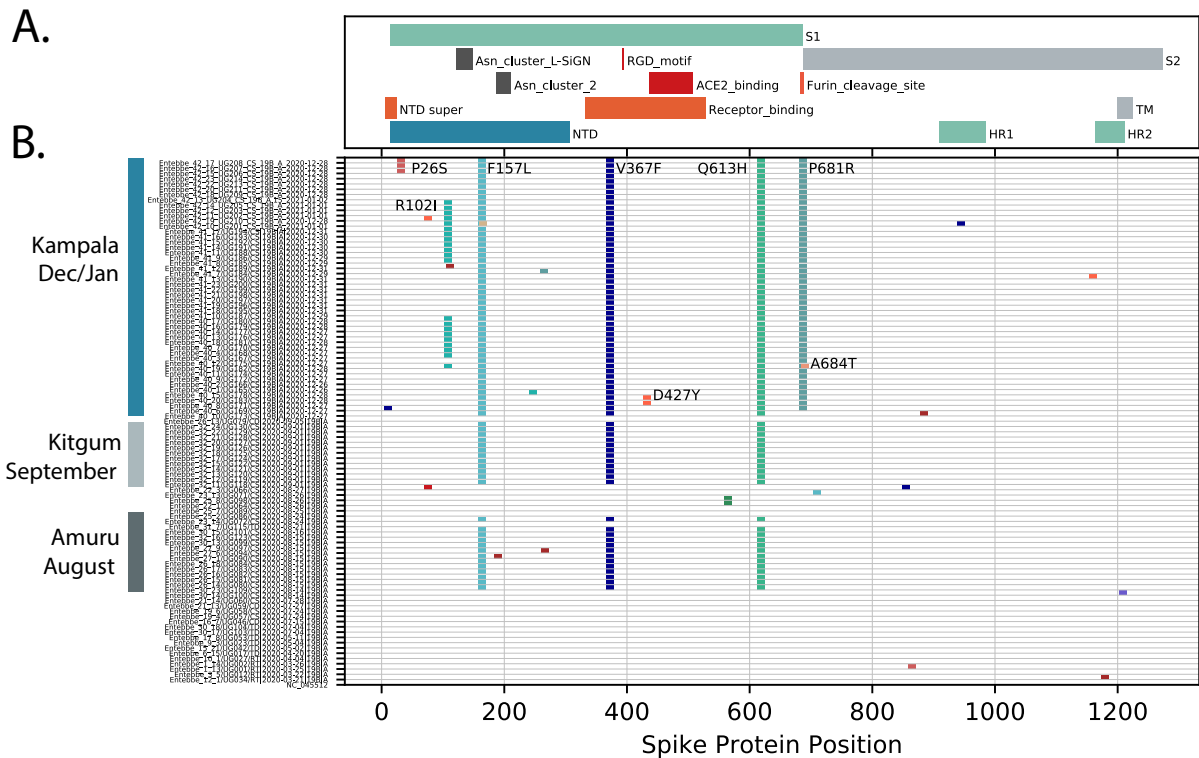
133 from Amuru and Kitgum prisons belonged exclusively to a lineage A (Figure 2) with three  
134 amino acid (aa) changes encoded in the spike protein (F157L, V367F and Q613H, Figure 3)  
135 that now define lineage A.23 (see below). Some individuals from Amuru prison were  
136 transferred to Kitgum prison, potentially facilitating virus movement between these prisons.  
137 By October 2020, lineage A.23 viruses were also found outside of the prisons in a  
138 community sample from Lira (a town 140 km from Amuru), and in two samples from the  
139 Kitgum hospital and in a community sample from Kampala. Lineage A viruses contributed to  
140 only 25% of the viruses in the Kampala region (Figure 1) in the period June to October 2020,  
141 which was consistent with the variety of virus entering Uganda and Kampala via international  
142 travellers and truck drivers seen in the initial period of the epidemic(8),(16). By December  
143 2020, 49 of the 50 sequenced samples from the Kampala region (from 9 clinical sites)  
144 belonged to the new A.23.1 lineage (Figure 1 and 2) The pattern of mutations in these virus  
145 sequences was consistent with their evolution from the original A.23 viruses observed in  
146 Amuru/Kitgum cluster (Figure 2). A plot of nucleotide changes over time for Ugandan lineage  
147 A viruses (results not shown) showed a consistent evolutionary rate of roughly 2 nucleotide  
148 change per month that has been observed for SARS-CoV-2 throughout the pandemic  
149 (17),(18).

#### 150 **Important changes observed in the spike protein**

151 The spike protein is crucial for virus entry into host cells, for tropism, and is a critical  
152 component of COVID-19 vaccine development and monitoring. The changes in spike protein  
153 observed in Uganda and global A.23 and A.23.1 viruses are shown in Figure 3. Many amino  
154 acid (aa) changes were single events with no apparent transmission observed. However, the  
155 initial lineage A.23 genomes from Amuru and Kitgum encoded three amino acid changes in  
156 the exposed S1 domain of spike, including F157L, V367F and Q613H (Figure 3). The V367F  
157 change is reported to modestly increase infectivity(19). Importantly, the Q613H change may  
158 have similar consequences as the D614G change observed in the B.1 lineage found



159 predominantly in Europe and USA; in particular, D614G was reported to increase infectivity,  
 160 spike trimer stability and furin cleavage (19),(20),(21),(22). These changes were not  
 161 encoded by the closest known related genome (strain UG053) from a truck driver entering  
 162 from South Sudan (Figure 2) and were not observed in previously reported genomes from  
 163 Uganda (8).



164  
 165 **Figure 3. Spike protein changes in lineage A.23 and A.23.1 relative to the SARS-CoV-2**  
 166 **reference strain (NC\_045512) encoded protein are documented. Lower panel:** Each line  
 167 represents the encoded spike protein sequence from a single genome, ordered by date of  
 168 samples collection (bottom earliest, top most recent). Sequences from Amuru in August  
 169 2020, Kitgum in September 2020 and Kampala December 2020/January 2021 are indicated.  
 170 Markers indicating the positions of amino acid (aa) differences from the reference strain,  
 171 changes observed in multiple genomes are annotated with the annotation (original aa  
 172 position new aa). Upper panel: The locations of important spike protein features are  
 173 indicated. NTD: N-terminal domain, RBD: receptor-binding domain, S1: spike 1, S1: Spike 2,  
 174 TM: transmembrane domain, HR1: helical repeat 1, HR2: helical repeat 2, NTD super: N-  
 175 terminal domain supersite.  
 176

177 Of concern, the recent Kampala and global A.23.1 virus sequences from December  
 178 2020-January 2021 now encoded 4 or 5 amino acid changes in the spike protein (now  
 179 defining lineage A.23.1, see below) plus additional protein changes in nsp3, nsp6, ORF8



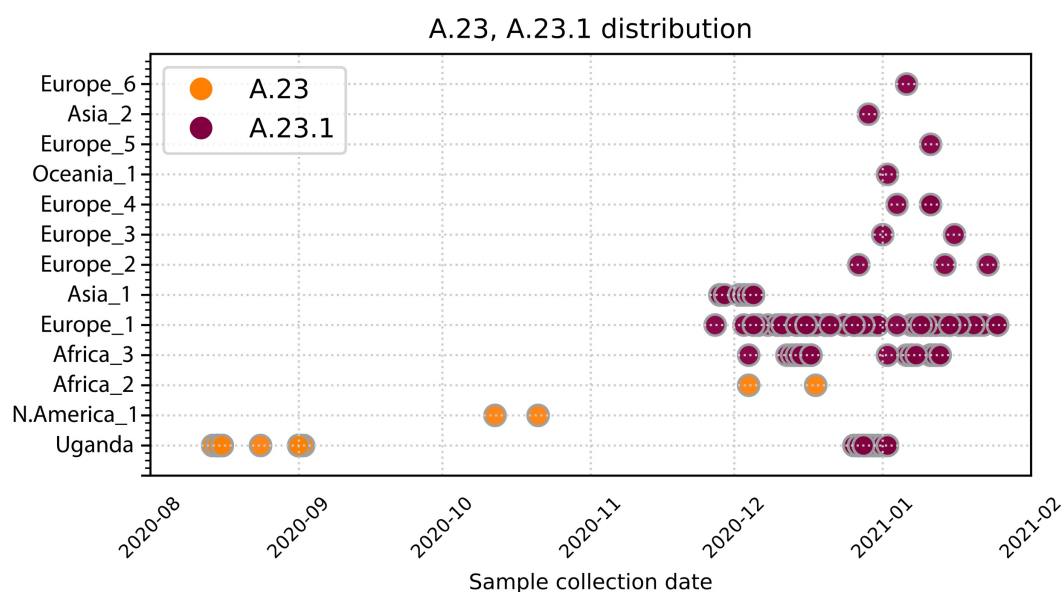
180 and ORF9 (Figure 3, 4). The P681R spike change encoded by all recent Kampala genomes  
181 since December 2020 adds a basic amino acid adjacent to the spike furin cleavage site. This  
182 same change has been shown *in vitro* to enhance the fusion activity of the SARS-CoV-2  
183 spike protein, likely due to increased cleavage by the cellular furin protease (23);  
184 importantly, a similar change (P681H) is encoded by the recently emerging VOC B.1.1.7 that  
185 is now spreading globally across 75 countries as of 5 February 2021 (5) (24). There are also  
186 changes in the spike N-terminal domain (NTD), a known target of immune selection,  
187 observed in samples from Kampala A.23.1 lineage, including P26S and R102I plus 8  
188 additional singleton changes (observed in only one genome, Figure 3).

### 189 **New lineage A designations.**

190 The viruses detected in Amuru and Kitgum met the criteria for a new SARS-CoV-2  
191 lineage (25)(26) by clustering together on a global phylogenetic tree, sharing epidemiological  
192 history and source from a single geographical origin, and encoding multiple defining SNPs.  
193 These features including especially the three spike changes F157L, Q613H and V367F  
194 define the new lineage A.23. Continued circulation and evolution of A.23 in Uganda was  
195 observed and two additional changes in spike R102I and P681R were observed in  
196 December 2020 in Kampala; these SNPs define the sub-lineage A.23.1. Additional changes  
197 in non-spike regions also define the A.23 and A.23.1, including nsp3: E95K, nsp6: M86I,  
198 L98F, ORF 8: L84S, E92K and ORF9 N: S202N, Q418H. These new lineages can be  
199 assigned since pangolin version v2.1.10 and pangoLEARN data release 2021-02-01.

200 Screening SARS-CoV-2 genomic data from GISAID, viruses from A.23 and A.23.1  
201 are now found in 12 countries outside Uganda (from Africa, Asia, Europe, North America  
202 and Oceania) indicating global movement of the newly emerging variants (Figure 4). In a  
203 screen of all available lineage A viruses in GISAID (Feb 4, 2021), the A.23 variant was first  
204 observed in Uganda in August 2020 and then in a country in North America (denoted as  
205 N.America\_1) in October and in country in Africa (denoted as Africa\_2) in December

206 (Figure 4). The variant A.23.1 was first seen in December in 2020 although we have a 2-  
 207 month gap in Uganda sequence data from October/November 2020. Outside of Uganda,  
 208 A.23.1 was found in another country in Africa (Africa\_3) from the end of November in 9  
 209 different countries across Europe (6 countries), Asia (2 countries) and Oceania (1 country).  
 210 Of note, the international flights out of Uganda were restarted on 1 October 2020 with  
 211 frequent flights to Europe and US overlaying via a country in Africa or Asia. Phylogenetic  
 212 analysis supports the close evolution of A.23 to A.23.1 (Supplementary Figure 1).

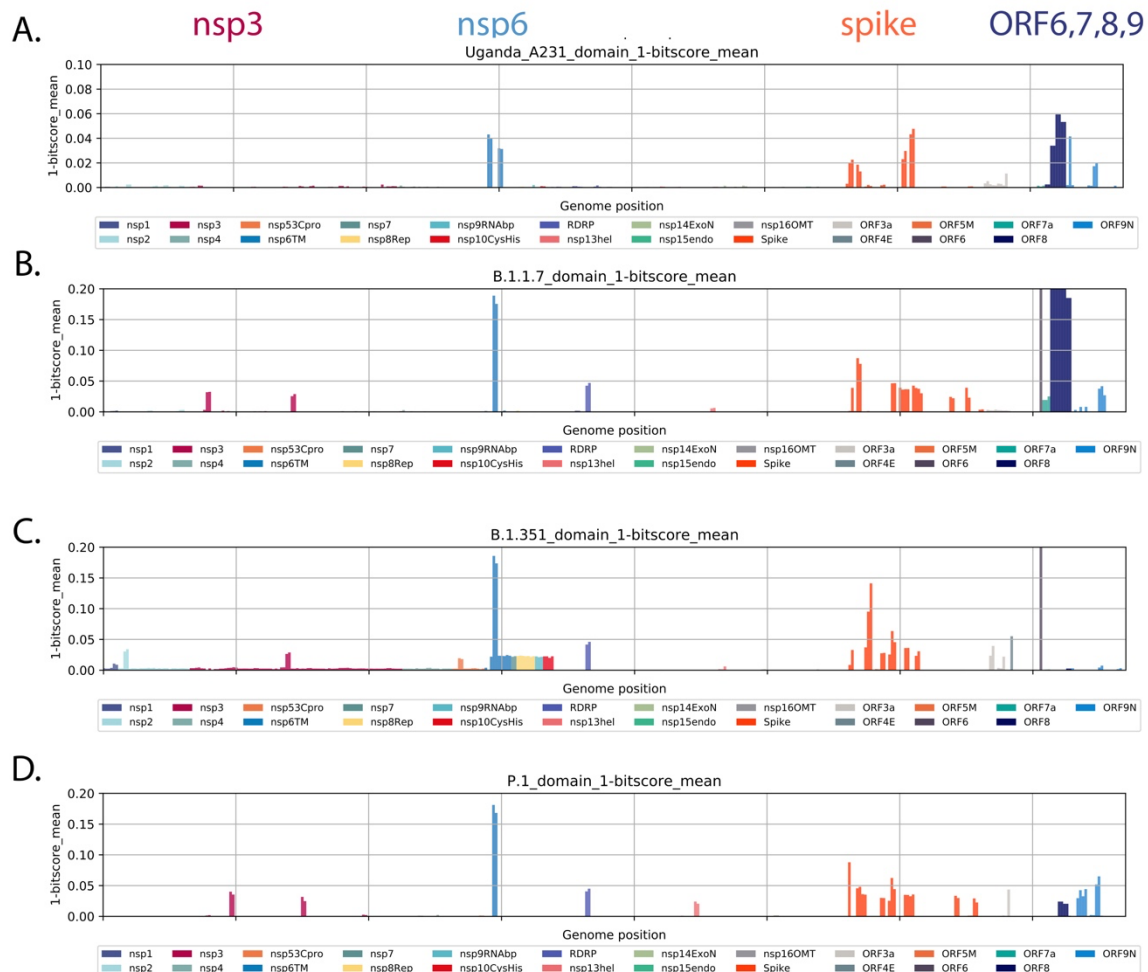


213  
 214 **Figure 4. Current global distribution of A.23 and A.23.1.** All available SARS-CoV-2  
 215 complete genomes annotated as complete and lineage A from GISAID were retrieved on  
 216 Feb 4 2021 and lineage typed using Pangolin(27). and confirmed as A.23 and A.23.1 by  
 217 extracting examining the encoded spike protein. A.23 and A.23.1 genomes were plotted by  
 218 country and sample collection date. Countries were anonymized by continent.  
 219

220 **Additional changes in Ugandan A.23 and A.23.1 genomes compared to other VOC**  
 221 **genomes**

222 There are changes in other genomic regions of the virus accompanying the  
 223 adaptation. We employed profile Hidden Markov Models (pHMMs) prepared from 44 amino  
 224 acid peptides across the SARS-CoV-2 proteome to detect and visualize protein changes  
 225 from the early lineage B reference strain NC\_045512. Measuring the identity score (bit-

226 scores) of each pHMMs across a query genome provides a measure of protein changes (in  
 227 44 amino acid steps) across the viral genome (Figure 5A). Applying this method to the most  
 228 recent lineage A.23.1 genome sequences the changes in spike (discussed above) as well as  
 229 changes in the transmembrane protein nsp6 and the interferon modulators ORF8 and 9  
 230 (Figure 5A). Modest changes were also observed in nsp13.



231

232 **Figure 5. All protein changes across lineage new variants.** All forward open reading  
 233 frames from the 35 early lineage B SARS-CoV-2 genomes were translated, and processed  
 234 into 44 aa peptides (with 22 aa overlap), clustered at 0.65 identity using Uclust (28), aligned  
 235 with MAAFT (29) and converted into pHMMs using HMMER-3(30). The presence of each  
 236 domains and its bit-score (a measure of the similarity between the query sequence and the  
 237 sequences used for the pHMM(30)) was sought in each set of SARS-CoV-2 VOC genomes  
 238 and the 1-mean of the normalized domain bit-scores was plotted across the genome (e.g. 1 -  
 239 the similarity of the identified query domain to the reference lineage B SARS-CoV-2  
 240 domain). Domains were coloured by the proteins from which they were derived with the  
 241 colour code indicated below the figure. **Panel A.** Query set are 49 most Uganda lineage  
 242 A.23.1 genomes. **Panel B.** All B.1.1.7 full genomes lacking Ns deposited in GISAID on Jan

243 26 2021, **Panel C.** All B.1.351 full genomes lacking Ns present in GISAID on Jan 26 2021,  
244 **Panel D.** All P.1 full genomes lacking Ns present in GISAID on Jan 26 2021.  
245

246 We asked if a similar pattern of evolution was appearing in VOCs as SARS-CoV-2  
247 adapted to human infection. We applied the same pHMM analysis to compare set of VOC or  
248 A.23.1 lineage viruses to the original SARS-CoV-2 lineage B genome sequences observed  
249 in December 2019/January 2020. The plots in Figure 5 show the difference in 44 amino acid  
250 steps across the viral proteome (see Methods for further details). We prepared sets of  
251 SARS-CoV-2 genomes annotated as B.1.1.7, B.1.351 or P.1 in GISAID and the A.23.1  
252 genomes from this study. Both the A.23.1 and the B.1.1.7 lineage encode nsp6, spike,  
253 ORF8 and 9 changes (Figure 5B). Lineage B.1.351 encodes nsp6, spike and ORF6  
254 changes (Figure 5C) and lineage P.1 encodes nsp6, spike and ORF6 changes (Figure 5D).  
255 Although the exact amino acid and positions of change within the proteins can differ in each  
256 lineage, there are some striking similarities in the common proteins that have been altered.  
257 Of interest, the nsp6 change present in B.1.1.7, B.1.351 and P.1 is a 3 amino acid deletion  
258 (106, 107 and 108) in a protein loop of nsp6 predicted to be on exterior of the autophagy  
259 vesicles on which the protein accumulates(31).The three amino acid nsp6 changes of  
260 lineage A.23.1 are L98F in the same exterior loop region, and the M86I and M183I changes  
261 predicted to be in intramembrane regions but adjacent to where the protein exits the  
262 membrane(31).

263 The spike changes affect the immunogenic N-terminal domain, the receptor binding  
264 domain, positions 613/614 (two lineages) and the furin cleavage site. A compilation of the  
265 amino acid changes in these lineages is found in Supplementary Table 2 with proteins that  
266 are altered in all 4 lineages marked in red.

267

268

269 **Discussion**

270 We report the emergence and spread of a new SARS-CoV-2 variant of the A lineage  
271 (A.23.1) with multiple protein changes throughout the viral genome. A similar phenomenon  
272 recently occurred with the B.1.1.7 lineage, detected first in the southeast of England (5) and  
273 now globally and with the B.1.351 lineage in South Africa(6), and P.1 lineage in Brazil(7)  
274 suggesting that local evolution and spread may be a common feature of SARS-CoV-2.  
275 Importantly, the lineage A.23.1 variant shares features found in the lineage B VOCs:  
276 alternation in key spike protein regions, especially the furin cleavage site and the 613/614  
277 change that may increase spike multimer formation. The VOCs and A.23.1 strains also  
278 encode changes in similar region of the nsp6 protein which may be important for altering  
279 cellular autophagy pathways that promote replication. Changes or disruption of ORF7,8 and  
280 9 are also present in the VOCs and A.23.1. The ORF8 changes or deletion probably  
281 indicates this protein is unnecessary for human replication, similar deletions accompanied  
282 SARS-CoV-2 adaption to humans(32),(33).

283 We suspect that all the emerging SARS-CoV-2 may be adjusting to infection and  
284 replication in humans and it is notable that the VOCs and lineage A.23.1 share a common  
285 patterns in their evolution. The spike changes are best understood due to the massive global  
286 effort to define the receptor and develop vaccines against the infection. The analysis  
287 reported in Figure 5 reveals common functions of SARS-CoV-2 that have been altered in all  
288 four variants, especially nsp6 and the ORF 7, 8 and 9. The functional consequences of the  
289 additional non-spike changes warrant additional studies and the current analysis may focus  
290 efforts of the proteins that are commonly changed in the variant lineages.

291

## 292 **Methods**

### 293 **Sample collection, whole genome MinION sequencing and genome assembly**

294 Residual nucleic acid extract from SARS-CoV-2 RT-PCR positive samples were  
295 obtained from Central Public Health Laboratory (Kampala, Uganda). The nucleic acid was

296 converted to cDNA and amplified using SARS-CoV specific 1500bp-amplicon spanning the  
297 entire genome as previously described(11).The resulting DNA amplicons were used to  
298 prepare sequencing libraries, barcoded individually and then pooled to sequence on MinION  
299 R.9.4.1 flowcells, following the standard manufacturer's protocol.

300 The genome assemblies were performed as previously described (8). Briefly, reads  
301 from fast5 files were basecalled and demultiplexed using Guppy 3.6 running on the UMIC  
302 HPC. Adapters and primers sequences were removed using Porechop  
303 (<https://github.com/rrwick/Porechop>) and the resulting reads were mapped to the reference  
304 genome Wuhan-1 (GenBank NC\_045512.2) using minimap2(34) and consensus genomes  
305 were generated in Geneious (Biomatters Ltd). Genome polishing was performed in Medaka,  
306 and SNPs and mismatches were checked and resolved by consulting raw reads.

307

### 308 **Phylogenetic analyses**

309 For the local Uganda virus comparison, all newly and previously generated genomes  
310 from Uganda (N=203, excluding 3 low coverage genomes) were aligned using MAFFT(29)  
311 and manually checked in AliView(35). The 5' and 3' untranslated regions (UTRs) were  
312 trimmed. Maximum-likelihood (ML) phylogenetic tree was constructed in IQTREE(36) under  
313 the GTR+F+R2 model as best-fitted substitution model according to Akaike Information  
314 Criterion (AIC) determined by ModelFinder in IQTREE and run for 100 pseudo-replicates.  
315 Resulting tree was visualised in Figtree(37) and rooted at the point of splitting lineage And B.

316 For phylogenetic analyses of Uganda lineage A.23 and A.23.1 strains comparing to  
317 global A.23 and A.23.1 strains, the global SARS-CoV-2 lineage A.23 and A.23.1 genomes  
318 were retrieved from GISAID on 4 February 2021 (N = 156). These global lineage A.23 and  
319 A.23.1 genomes combining with Ugandan A.23 and A.23.1 genomes (N = 97) and an  
320 outgroup of this A.23 lineage (Uganda strain UG053) were aligned using MAFFT and  
321 manually checked in AliView, followed by trimming 5' and 3' UTRs. From this alignment, the

322 spike protein region was extracted for phylogenetic construction. The global and Ugandan  
323 A.23 and A.23.1 genomes were used to construct a ML tree under the GTR+F+I model as  
324 best-fitted substitution model according to AIC determined by ModelFinder and run for 100  
325 pseudo-replicates in IQTREE. A ML tree was constructed in IQTREE for the nucleotide  
326 sequences encoding the spike protein from the global and Ugandan A.23 and A.23.1 strains,  
327 under the TPM2+F+I model of evolution as best-fitted model estimated by ModelFinder AIC  
328 and run for 100 pseudo-replicates. Resulting trees were visualised in Figtree and rooted  
329 using the strain UG053.

330

### 331 **Ethical approvals**

332 This study was approved by the Uganda Virus Research Institute- Research and  
333 Ethics Committee (UVRI-REC Federalwide Assurance [FWA] FWA No. 00001354, study  
334 reference. GC/127/20/04/771) and by the Uganda National Council for Science and  
335 Technology, reference number HS936ES. The novel reported SARS-CoV-2 genomes are  
336 available on GISAID (<https://www.gisaid.org/>) under the accession numbers  
337 EPI\_ISL\_954226-EPI\_ISL\_954300 and EPI\_ISL\_955136.

338

339

### 340 **Acknowledgements**

341 We thank all global SARS-CoV-2 sequencing groups for their open and rapid sharing  
342 of sequence data and GISAID for providing an effective platform for making these data  
343 available. We are grateful to the Oxford Nanopore Technologies and the ARTIC Network for  
344 their support and we thank Pope Moseley for his constructive comments on the manuscript.  
345 The SARS-CoV2 diagnostic and sequencing award is jointly funded by the UK Medical  
346 Research Council (MRC) and the UK Department for International Development (DFID)  
347 under the MRC/DFID Concordat agreement (grant agreement number NC\_PC\_19060) and



348 is also part of the EDCTP2 programme supported by the European Union. The UMIC high  
349 performance computer was supported by MRC (grant number MC\_EX\_MR/L016273/1) to  
350 PK. A.R. acknowledges the support of the Wellcome Trust (Collaborators Award  
351 206298/Z/17/Z [ARTIC network](#)) and the European Research Council (grant agreement no.  
352 725422 – ReservoirDOCS). The study is additionally funded by the Wellcome, DFID -  
353 Wellcome Epidemic Preparedness – Coronavirus (grant agreement number 220977/Z/20/Z)  
354 awarded to MC.

355

### 356 **Author contribution statement**

357 All authors contributed to the work presented in this paper.

358

### 359 **Competing Interests statement**

360 The authors declare no competing interests.

361

### 362 **References**

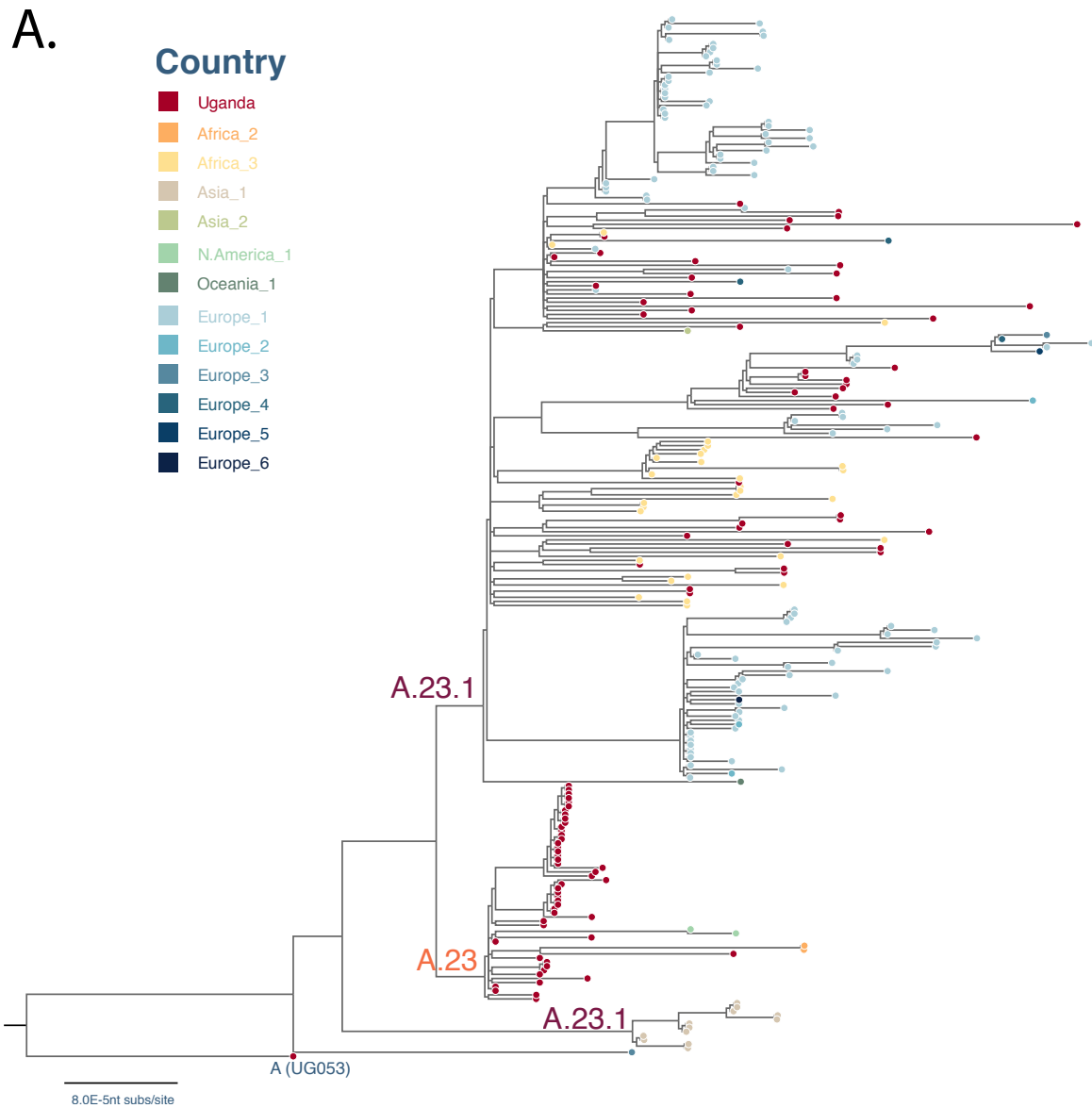
- 363 1. Edward C. Holmes, Yong-Zhen Zhang EC. Initial genome release of novel coronavirus.  
364 Virological.org [Internet]. 2020 [cited 2021 Jan 24]; Available from:  
365 <http://virological.org/t/319>
- 366 2. Li Q, Guan X, Wu P, Wang X, Zhou L, Tong Y, et al. Early Transmission Dynamics in  
367 Wuhan, China, of Novel Coronavirus–Infected Pneumonia. *N Engl J Med*. 2020 Jan  
368 29;NEJMoa2001316.
- 369 3. Yang X, Yu Y, Xu J, Shu H, Xia J, Liu H, et al. Clinical course and outcomes of critically  
370 ill patients with SARS-CoV-2 pneumonia in Wuhan, China: a single-centered,  
371 retrospective, observational study. *Lancet Respir Med*. 2020  
372 Feb;S2213260020300795.
- 373 4. Rambaut A, Holmes EC, O’Toole Á, Hill V, McCrone JT, Ruis C, et al. A dynamic  
374 nomenclature proposal for SARS-CoV-2 lineages to assist genomic epidemiology. *Nat*  
375 *Microbiol*. 2020 Nov;5(11):1403–7.
- 376 5. Volz E, Mishra S, Chand M, Barrett JC, Johnson R, Geidelberg L, et al. Transmission of  
377 SARS-CoV-2 Lineage B.1.1.7 in England: Insights from linking epidemiological and  
378 genetic data [Internet]. *Infectious Diseases (except HIV/AIDS)*; 2021 Jan [cited 2021  
379 Jan 29]. Available from: <http://medrxiv.org/lookup/doi/10.1101/2020.12.30.20249034>

- 380 6. Tegally H, Wilkinson E, Giovanetti M, Iranzadeh A, Fonseca V, Giandhari J, et al.  
381 Emergence and rapid spread of a new severe acute respiratory syndrome-related  
382 coronavirus 2 (SARS-CoV-2) lineage with multiple spike mutations in South Africa  
383 [Internet]. *Epidemiology*; 2020 Dec [cited 2021 Jan 6]. Available from:  
384 <http://medrxiv.org/lookup/doi/10.1101/2020.12.21.20248640>
- 385 7. Voloch CM, Silva F R da, de Almeida LGP, Cardoso CC, Brustolini OJ, Gerber AL, et al.  
386 Genomic characterization of a novel SARS-CoV-2 lineage from Rio de Janeiro, Brazil  
387 [Internet]. *Genetic and Genomic Medicine*; 2020 Dec [cited 2021 Jan 30]. Available  
388 from: <http://medrxiv.org/lookup/doi/10.1101/2020.12.23.20248598>
- 389 8. Bugembe DL, Kayiwa J, Phan MVT, Tushabe P, Balinandi S, Dhaala B, et al. Main  
390 Routes of Entry and Genomic Diversity of SARS-CoV-2, Uganda. *Emerg Infect Dis.*  
391 2020 Oct;26(10):2411–5.
- 392 9. Hadfield J, Megill C, Bell SM, Huddleston J, Potter B, Callender C, et al. Nextstrain: real-  
393 time tracking of pathogen evolution. Kelso J, editor. *Bioinformatics*. 2018 Dec  
394 1;34(23):4121–3.
- 395 10. Githinji G, de Laurent ZR, Mohammed KS, Omuoyo DO, Macharia PM, Morobe JM, et  
396 al. Tracking the introduction and spread of SARS-CoV-2 in coastal Kenya [Internet].  
397 *Epidemiology*; 2020 Oct [cited 2020 Dec 7]. Available from:  
398 <http://medrxiv.org/lookup/doi/10.1101/2020.10.05.20206730>
- 399 11. Cotten M, Bugembe DL, Kaleebu P, Phan MVT. Alternate primers for whole-genome  
400 SARS-CoV-2 sequencing [Internet]. *Genomics*; 2020 Oct [cited 2020 Nov 30]. Available  
401 from: <http://biorxiv.org/lookup/doi/10.1101/2020.10.12.335513>
- 402 12. Page AJ, Mather AE, Le Viet T, Meader EJ, Alikhan N-FJ, Kay GL, et al. Large scale  
403 sequencing of SARS-CoV-2 genomes from one region allows detailed epidemiology  
404 and enables local outbreak management [Internet]. *Epidemiology*; 2020 Sep [cited  
405 2020 Oct 9]. Available from:  
406 <http://medrxiv.org/lookup/doi/10.1101/2020.09.28.20201475>
- 407 13. Filipe ADS, Shepherd J, Williams T, Hughes J, Aranday-Cortes E, Asamaphan P, et al.  
408 Genomic epidemiology of SARS-CoV-2 spread in Scotland highlights the role of  
409 European travel in COVID-19 emergence [Internet]. *Infectious Diseases (except*  
410 *HIV/AIDS)*; 2020 Jun [cited 2020 Dec 14]. Available from:  
411 <http://medrxiv.org/lookup/doi/10.1101/2020.06.08.20124834>
- 412 14. Daily Monitor. Amuru prison closed as 153 test positive for Covid-19. 2020 Aug 23;  
413 Available from: [https://www.monitor.co.ug/uganda/news/national/amuru-prison-closed-](https://www.monitor.co.ug/uganda/news/national/amuru-prison-closed-as-153-test-positive-for-covid-19-1924660)  
414 [as-153-test-positive-for-covid-19-1924660](https://www.monitor.co.ug/uganda/news/national/amuru-prison-closed-as-153-test-positive-for-covid-19-1924660)
- 415 15. Penelope Nankunda. COVID-19: Uganda registers 318 new cases in a single day. MSN  
416 [Internet]. 2020 Aug 22; Available from: [https://www.msn.com/en-xl/news/other/covid-](https://www.msn.com/en-xl/news/other/covid-19-uganda-registers-318-new-cases-in-a-single-day/ar-BB18gprA)  
417 [19-uganda-registers-318-new-cases-in-a-single-day/ar-BB18gprA](https://www.msn.com/en-xl/news/other/covid-19-uganda-registers-318-new-cases-in-a-single-day/ar-BB18gprA)
- 418 16. Matthew Cotten et al. SARS-CoV-2 diversity in Uganda, December, 2020. *Virological.org*  
419 [Internet]. 2021; Available from: [https://virological.org/t/sars-cov-2-diversity-in-uganda-](https://virological.org/t/sars-cov-2-diversity-in-uganda-december-2020/571)  
420 [december-2020/571](https://virological.org/t/sars-cov-2-diversity-in-uganda-december-2020/571)

- 421 17. Duchene S, Featherstone L, Haritopoulou-Sinanidou M, Rambaut A, Lemey P, Baele G.  
422 Temporal signal and the phylodynamic threshold of SARS-CoV-2. *Virus Evol.* 2020 Jul  
423 1;6(2):veaa061.
- 424 18. Worobey M, Pekar J, Larsen BB, Nelson MI, Hill V, Joy JB, et al. The emergence of  
425 SARS-CoV-2 in Europe and North America. *Science.* 2020 Oct 30;370(6516):564–70.
- 426 19. Li Q, Wu J, Nie J, Zhang L, Hao H, Liu S, et al. The Impact of Mutations in SARS-CoV-2  
427 Spike on Viral Infectivity and Antigenicity. *Cell.* 2020 Sep 3;182(5):1284-1294.e9.
- 428 20. Nguyen HT, Zhang S, Wang Q, Anang S, Wang J, Ding H, et al. Spike glycoprotein and  
429 host cell determinants of SARS-CoV-2 entry and cytopathic effects. *J Virol.* 2020 Dec  
430 11;
- 431 21. Gobeil SM-C, Janowska K, McDowell S, Mansouri K, Parks R, Manne K, et al. D614G  
432 Mutation Alters SARS-CoV-2 Spike Conformation and Enhances Protease Cleavage at  
433 the S1/S2 Junction. *Cell Rep.* 2021 Jan 12;34(2):108630.
- 434 22. Volz E, Hill V, McCrone JT, Price A, Jorgensen D, O’Toole Á, et al. Evaluating the  
435 Effects of SARS-CoV-2 Spike Mutation D614G on Transmissibility and Pathogenicity.  
436 *Cell.* 2020 Nov;S0092867420315373.
- 437 23. Hoffmann M, Kleine-Weber H, Pöhlmann S. A Multibasic Cleavage Site in the Spike  
438 Protein of SARS-CoV-2 Is Essential for Infection of Human Lung Cells. *Mol Cell.* 2020  
439 May;78(4):779-784.e5.
- 440 24. Áine O’Toole et al. B.1.1.7 report 2021-02-05. 2021; Available from: [https://cov-](https://cov-lineages.org/global_report_B.1.1.7.html)  
441 [lineages.org/global\\_report\\_B.1.1.7.html](https://cov-lineages.org/global_report_B.1.1.7.html)
- 442 25. Áine O’Toole, JT McCrone, Verity Hill and Andrew Rambaut. Pangolin COVID-19  
443 Lineage Assigner. Available from: <https://pangolin.cog-uk.io/>
- 444 26. Rambaut A, Holmes EC, Hill V, O’Toole Á, McCrone J, Ruis C, et al. A dynamic  
445 nomenclature proposal for SARS-CoV-2 to assist genomic epidemiology [Internet].  
446 *Microbiology*; 2020 Apr [cited 2020 Apr 27]. Available from:  
447 <http://biorxiv.org/lookup/doi/10.1101/2020.04.17.046086>
- 448 27. Áine O’Toole et al. Phylogenetic Assignment of Named Global Outbreak LINEages  
449 (PANGOLIN). 2020; Available from: <https://github.com/cov-lineages/pangolin>
- 450 28. Edgar RC. Search and clustering orders of magnitude faster than BLAST.  
451 *Bioinformatics.* 2010 Oct 1;26(19):2460–1.
- 452 29. Katoh K, Standley DM. MAFFT Multiple Sequence Alignment Software Version 7:  
453 Improvements in Performance and Usability. *Mol Biol Evol.* 2013 Apr 1;30(4):772–80.
- 454 30. Eddy SR. Accelerated Profile HMM Searches. *PLOS Comput Biol.* 2011 Oct  
455 20;7(10):e1002195.
- 456 31. Benvenuto D, Angeletti S, Giovanetti M, Bianchi M, Pascarella S, Cauda R, et al.  
457 Evolutionary analysis of SARS-CoV-2: how mutation of Non-Structural Protein 6  
458 (NSP6) could affect viral autophagy. *J Infect.* 2020 Jul;81(1):e24–7.

- 459 32. Su YCF, Anderson DE, Young BE, Linster M, Zhu F, Jayakumar J, et al. Discovery and  
460 Genomic Characterization of a 382-Nucleotide Deletion in ORF7b and ORF8 during the  
461 Early Evolution of SARS-CoV-2. Schultz-Cherry S, editor. *mBio*. 2020 Jul  
462 21;11(4):e01610-20, /mbio/11/4/mBio.01610-20.atom.
- 463 33. The Chinese SARS Molecular Epidemiology Consortium. Molecular Evolution of the  
464 SARS Coronavirus During the Course of the SARS Epidemic in China. *Science*. 2004  
465 Mar 12;303(5664):1666–9.
- 466 34. Li H. Minimap2: pairwise alignment for nucleotide sequences. Birol I, editor.  
467 *Bioinformatics*. 2018 Sep 15;34(18):3094–100.
- 468 35. Larsson A. AliView: a fast and lightweight alignment viewer and editor for large datasets.  
469 *Bioinformatics*. 2014 Nov 15;30(22):3276–8.
- 470 36. Nguyen L-T, Schmidt HA, von Haeseler A, Minh BQ. IQ-TREE: A Fast and Effective  
471 Stochastic Algorithm for Estimating Maximum-Likelihood Phylogenies. *Mol Biol Evol*.  
472 2015 Jan;32(1):268–74.
- 473 37. Rambaut A. FigTree <http://tree.bio.ed.ac.uk/software/figtree>. 2019;
- 474 38. Josh B. Singer, Gifford R, Cotten M, Robertson DL. CoV-GLUE project. 2020; Available  
475 from: <http://cov-glue.cvr.gla.ac.uk/>
- 476
- 477

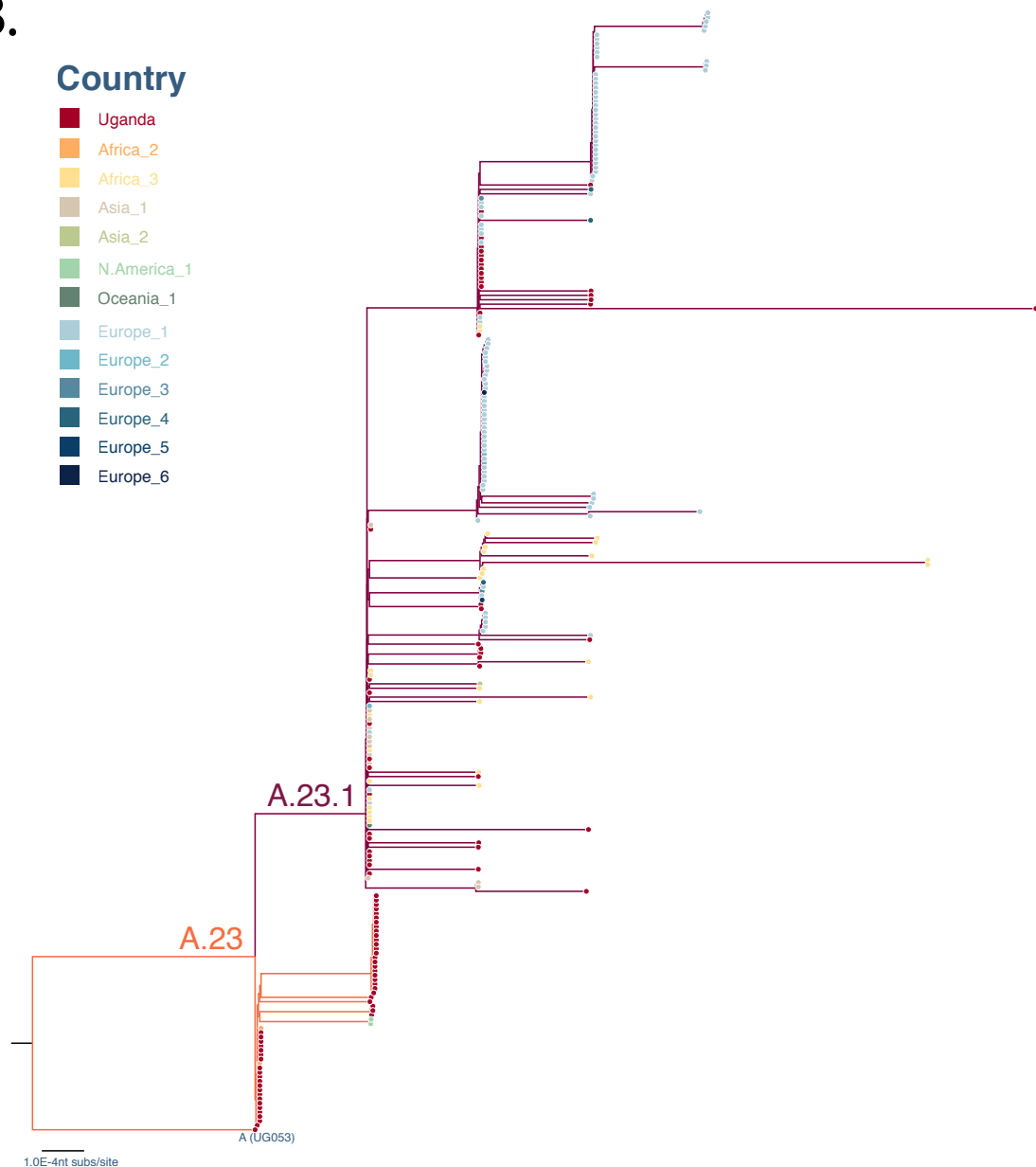
478 **Supplementary Material**



479

480

B.



481

482

483 **Supplemental Figure 1. Maximum-likelihood phylogenetic tree comparing**

484 **Uganda lineage A.23 and A.23.1 strains to global lineage A.23 and A.23.1. Panel**

485 **A:** A maximum-likelihood (ML) phylogenetic tree comparing Ugandan A.23 and A.23.1

486 (N = 97) with the global A.23 and A.23.1 (N = 156). **Panel B:** A ML phylogenetic tree

487 of the nucleotide sequence encoding the spike protein region, comparing Ugandan

488 A.23 and A.23.1 (N = 97) with the global A.23 and A.23.1 (N = 156). In both panels,

489 the tree was rooted by the outgroup strain UG053 and strains were coloured according

490 to the countries where they were identified. Branch length was drawn to the scale of

491 number of nucleotide substitutions per site and trees were visualised in Figtree (37).

492

493 **Supplementary Material Table 1. Lineage distribution in Uganda**

Lineage <sup>1</sup>	Count of lineage
A	8
A.20	1
A.22	1
A.23	49
A.23.1	48
A.25	16
B	4
B.1	31
B.1.1.1	9
B.1.1.10	1
B.1.1.27	6
B.1.214	2
B.1.380	2
B.1.393	18
B.1.398	1
B.31	3
B.4	3
<b>All lineage A and sub-A</b>	<b>123</b>
<b>All lineage B and sub-B</b>	<b>80</b>
<b>Total</b>	<b>203</b>

494 Footnote.

495 1. All available genomes from Uganda were classified into Pango lineages using pangolin  
496 (27).

497 **Supplementary Material Table 2.** Summary of replacements in the A.23.1 and 3 VOC lineages<sup>1</sup>.

Lineage	nsp2	nsp3	nsp5	nsp6	nsp12	spike	ORF3a	ORF4 E	ORF8	ORF9 N
A.23.1		nsp3: E95K		nsp6: M86I		S_R102I			ORF 8: L84S	N_S202N
A.23.1				nsp6: L98F		S_F157L			ORF 8: E92K	N_Q418H
A.23.1				nsp6: M183I		S_V367F				
A.23.1						S_Q613H				
A.23.1						S_P681R				
B.1.1.7		nsp3_T183I		nsp6_del_11288_11296	nsp12_P323L	S_N501Y			ORF 8_Q27*	N_D3L
B.1.1.7		nsp3_A890D				S_A570D			ORF 8_R62I	N_G204R
B.1.1.7		nsp3_I1412T				S_D614G			ORF 8_Y73C	N_R203K
B.1.1.7						S_P681H				N_S235F
B.1.1.7						S_T716I				
B.1.1.7						S_S982A				
B.1.1.7						S_D1118H				
B.1.1.7						S_del_21765_21770				
B.1.1.7						S_del_21991_21993				
B.1.351	nsp2_T85I	nsp3_K837N	nsp5_K90R	nsp6_del_11288_11296	nsp12_P323L	S_D80A	ORF 3a_Q57H	E_P71L		N_T205I
B.1.351						S_D215G				
B.1.351						S_K417N				
B.1.351						S_E484K				
B.1.351						S_N501Y				
B.1.351						S_D614G				
B.1.351						S_A701V				
B.1.351						S_non_cod_del_22281_22289				
B.1.281.1		nsp3_S370L		nsp6_del_11288_11296	nsp12_P323L	S_L18F	ORF 3a_S253P		ORF 8_E92K	N_P80R
B.1.281.1		nsp3_K977Q				S_T20N				N_R203K
B.1.281.1						S_P26S				N_G204R
B.1.281.1						S_D138Y				
B.1.281.1						S_R190S				
B.1.281.1						S_K417T				
B.1.281.1						S_E484K				
B.1.281.1						S_N501Y				
B.1.281.1						S_D614G				
B.1.281.1						S_H655Y				
B.1.281.1						S_T1027I				
B.1.281.1						S_V1176F				

498 1. Representative sets of each lineage (either all available gap-free full genomes (B.1.351 and  
499 B.1.281.1) or all genomes gap-free full genomes annotated as B.1.1.7 were analyzed using  
500 CoV-GLUE (38) to identify frequent amino acid replacements associated with each lineage.  
501