

1 **Association between COVID-19, mobility and environment in São Paulo, Brazil**

2

3 **Authors and affiliation**

4

5 Sergio Ibarra-Espinosa

6 Departamento de Ciências Atmosféricas, Instituto de Astronomia, Geofísica e Ciências Atmosféricas, Universidade
7 de São Paulo, Brazil

8

9 Edmilson Dias de Freitas

10 Departamento de Ciências Atmosféricas, Instituto de Astronomia, Geofísica e Ciências Atmosféricas, Universidade
11 de São Paulo, Brazil

12

13 Karl Ropkins

14 Institute for Transport Studies, University of Leeds, UK

15

16 Francesca Dominici

17 Harvard Data Science Initiative, Harvard University, Boston, MA 02138, USA

18

19 Amanda Rehbein

20 Departamento de Ciências Atmosféricas, Instituto de Astronomia, Geofísica e Ciências Atmosféricas, Universidade
21 de São Paulo, Brazil

22

23 **Corresponding author**

24 Sergio Ibarra-Espinosa

25 Departamento de Ciências Atmosféricas, Instituto de Astronomia, Geofísica e Ciências Atmosféricas, Universidade
26 de São Paulo, Brazil

27 Phone +55 (11) 934 909 778

28 E-mail: sergio.ibarra@usp.br

29

30 **Association between COVID-19, mobility and environment in São Paulo, Brazil**

31 Sergio Ibarra-Espinosa¹, Edmilson Dias de Freitas¹, Karl Ropkins², Francesca Dominici³, Amanda Rehbein¹

32 ¹ Departamento de Ciências Atmosféricas, Instituto de Astronomia, Geofísica e Ciências Atmosféricas,
33 Universidade de São Paulo, Brazil

34 ² Institute for Transport Studies, University of Leeds, UK

35 ³ Harvard Data Science Initiative, Harvard University, Boston, MA 02138, USA

36

37 Author correspondence: sergio.ibarra@usp.br

38

39 **Abstract**

40 **Background**

41 Brazil, the country most impacted by the coronavirus disease 2019 (COVID-19) on the southern hemisphere, use
42 intensive care admissions per day, mobility and other indices to control quarantines and prevent the transmissions of
43 SARS-CoV2. In this study we quantified the associations between residential mobility index (RMI), air pollution,
44 meteorology, and daily cases and deaths of COVID-19 in São Paulo, Brazil

45 **Objectives**

46 To estimate the associations between daily residential mobility index (RMI), air pollution, and meteorology, and
47 daily cases and deaths for COVID-19 in São Paulo, Brazil.

48 **Methods**

49 We applied a semiparametric generalized additive model (GAM) to estimate: 1) the association between residential
50 mobility index and cases and deaths due to COVID-19, accounting for ambient particulate matter (PM_{2.5}), ozone
51 (O₃), relative humidity, temperature and delayed exposure between 3-21 days and 2) the association between
52 exposure to for ambient particulate matter (PM_{2.5}), ozone (O₃), accounting for relative humidity, temperature and
53 mobility.

54 **Results**

55 We found an RMI of 45.28% results in 1,212 cases (95% CI: 1,189 to 1,235) and 44 deaths (95% CI: 40 to 47).
56 Reducing mobility 5% would avoid 438 cases and 21 deaths. Also, we found that an increment of 10 µg·m⁻³ of PM_{2.5}
57 risk of 1.140 (95% CI: 1.021 to 1.274) for cases and of 1.086 (95% CI: 1.008 to 1.170) for deaths, while O₃ produces

58 a relative risk of 1.075 (95% CI: 1.006 to 1.150) for cases and 1.063 (95% CI: 1.006 to 1.124) for deaths,
59 respectively.

60

61 **Discussion**

62 We compared our results with observations and literature review, finding well agreement. These results implicate
63 that authorities and policymakers can use such mobility indices as tools to support social distance activities and
64 assess their effectiveness in the coming weeks and months. Small increments of air pollution pose a risk of COVID-
65 19 cases.

66 **Conclusion**

67 Spatial distancing is a determinant factor to control cases and deaths for COVID-19. Small increments of air
68 pollution result in a high number of COVID-19 cases and deaths. $PM_{2.5}$ has higher relative risks for COVID-19 than
69 O_3 .

70

71 **Keywords:** COVID-19, SARS-CoV2, residential mobility index, air pollution, meteorology

72 **Introduction**

73 The world has been facing an unprecedented critical health crisis due to COVID-19 pandemic caused by the zoonotic
74 severe acute respiratory syndrome coronavirus 2 (SARS-CoV2). According to the Johns Hopkins University (JHU)
75 Center for Systems Science and Engineering (CSSE), on February 20th, 2021, there were 110,810,601 confirmed
76 cases of COVID-19 worldwide, and 2,454,047 deaths (Dong et al. 2020). Many countries implemented social
77 isolation and quarantine strategies, and internet companies released aggregated location data to provide information
78 on the effectiveness of quarantine and isolation (Google 2021). This new disease demonstrated that developed
79 countries such as Belgium, Italy, and Spain were unprepared, which resulted in infection fatality rates (deaths/cases)
80 of 15.4%, 13.5%, and 10.2%, respectively. Furthermore, new mutations of SARS-CoV2 would present higher
81 transmissibility and current vaccines might not offer protection against it (Gupta et al. 2021; Kupferschmidt 2021).
82 Therefore, it is urgent and crucial to conduct more research to better understand the relationships and associations
83 between SARS-CoV2 transmissibility and environmental factors.

84 COVID-19 spread very quickly across Latin America (Bolaño-Ortiz et al. 2020). As of January 4, 2021, Brazil is the
85 third country with more cases (7,733,746) and deaths (196,018) (Dong et al. 2020). Brazil is a continental country
86 with an area of 8.5 million km² and a population of 208 million. The city of São Paulo is the highest populated city
87 in Brazil, with 11.8 million people (IBGE 2014), and also, with the highest number of COVID-19 cases (404,025)
88 and deaths (15,725 (<https://covid.saude.gov.br/>)). In Brazil, only symptomatic cases are tested, hence, the real
89 number of SARS-CoV2 infections could be much higher. A recent study shows that COVID-19 death notification in
90 Brazil is underreported (Alves et al. 2020). On March 24th, 2020 (GESP 2020), São Paulo's government
91 recommended social distancing for suspected cases and introduced a local quarantine to reduce virus transmission.
92 Brazil adopted containment measures such as close contact and limited mobility as protective measures, however
93 "quarantine" was the official term used by São Paulo state government. During the São Paulo quarantine, the
94 concentrations of carbon monoxide (CO), nitrogen dioxide (NO₂), PM₁₀, and PM_{2.5} were reduced by -35.70%, -
95 29.56%, -17.80%, and -25.02%, respectively. However, O₃ increased by 53.25% between 21:00-03:00 Local Time
96 (LT) (Dantas et al. 2020; Freitas et al. 2020; Nakada and Urban 2020). Other studies showed reductions in China
97 (30% of NO₂ and 25% of CO₂) (Dutheil et al. 2020). However, there are indications that COVID-19 and air
98 pollution interactions may be more complex. Some early reports suggest that longer-term exposure to air pollution
99 increases susceptibility and severity upon infection (Tosepu et al. 2020; Wu et al. 2020). Similarly, meteorological

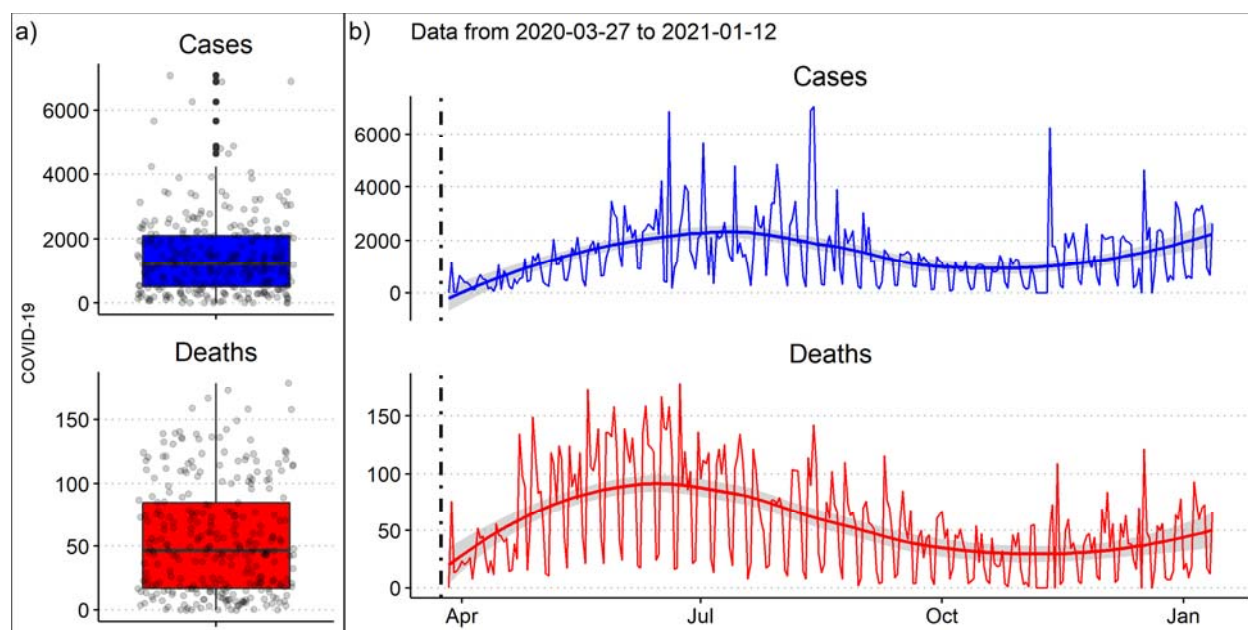
100 conditions are likely to be important but not easily predicted. For example, some studies have suggested that high
101 humidity and temperature would reduce virus transmission (Wang et al. 2020a, 2020b). Furthermore, the biological
102 inactivation rate of SARS-CoV2 is sensitive to humidity, with minimum half-life at 65% and higher at 40% and
103 85%, and its decays at 27 °C is 10 times faster than at 10 °C (Morris et al. 2020). However, estimations for the
104 Amazonian city of Manaus, which have a climatology¹ temperature 27 °C of and relative humidity 80.2% for July,
105 show that between 44% and 66% of the population was infected with SARS-CoV2 by July (Buss et al. 2020).
106 Few studies have evaluated the effect of mobility on COVID-19, mainly in China. Kraemer et al., (2020) found
107 correlation of 0.94 between real-time mobility data and COVID-19 cases from Wuhan, China, confirming the
108 exportation of cases from Wuhan to other provinces and the effectiveness of the sanitaire cordon. Tian et al (2020)
109 found that Wuhan shutdown delayed the appearance of COVID-19 in 2.9 days. In the US, Badr et al (2020)
110 associated county-level origin-destination matrices and COVID-19 cases finding that counties with more mobility
111 presented higher number of cases. In a related correspondence, Gatalo et al (2020) found that the absence of a strong
112 correlation between growth of cases and mobility may be related to other factors, such as wearing mask, keeping
113 distance in encounters and also, the existence of superspreading events.
114 Our study investigates the associations between RMI and COVID-19, and air pollution and COVID-19 on a
115 particular day, having accounted for environmental and meteorological factors. We analyzed the effects of mobility,
116 air pollution, and meteorology on the daily COVID-19 cases and deaths in the city of São Paulo. We applied
117 semiparametric generalized additive models to study the effect of each predictor by isolating confounding factors
118 (Peng and Dominici 2008). To the best of our knowledge, few studies have associated mobility air pollution,
119 meteorological factors, and COVID-19 simultaneously especially in Latin Ameirca.

120 **Material and Methods**

121 The Brazilian Ministry of Health reports the official daily time-series of cases and mortality associated with
122 COVID-19 at <https://covid.saude.gov.br/> updated once a day around 19:00 Brazilian official time (-3 GMT). This
123 information is gathered from the 26 states and the federal district health secretaries and provided at the national,
124 state, and municipality levels. The availability of data using the web site was interrupted on June 07th, 2020, and
125 returned on June 08th, 2020 after judicial demand (G1 2020). When returned, it included the data obtained when the

¹ Climatology between 1981-2010 <https://portal.inmet.gov.br/>

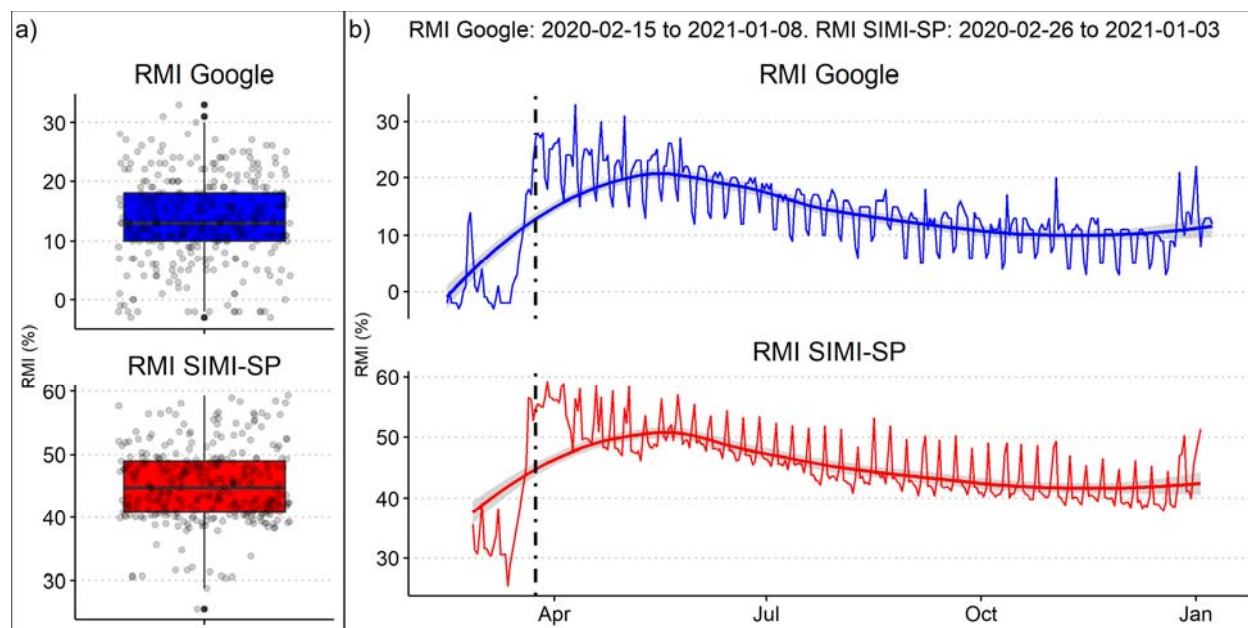
126 web site was offline. To check the trustworthiness of that data, we compared it with the dataset from BrasilIO
127 (<https://brasil.io/covid19/>). The BrasilIO is an independent organization made of voluntaries that also gathers
128 COVID-19 data from state health secretaries. Both datasets are very similar, in effect, we applied the Wilcoxon test
129 (R Core Team 2020) for cases and deaths getting p-values of 0.7798 and 0.922, meaning that there are no significant
130 differences between the two datasets. Therefore, we used the official data from the Brazilian Ministry of Health. The
131 day July 29th the number of cases reported included July 28th, therefore, we distributed the number of cases and
132 deaths equally in both days. Figure 1 shows the daily cases and deaths from COVID-19 in São Paulo State between
133 March 27th, 2020 and January 03rd, 2021. The daily mean cases is 1432 and deaths is 55, with a maximum of 7063
134 on August 13rd, 2020 and 179 on June 23rd, 2020, respectively. Furthermore, the variances are 1511183 for cases and
135 1889.89 for deaths, indicating overdispersion in the data. In effect, the dispersion parameter for cases is 1035.86 and
136 for deaths 33.84 (both p-value<0.05) (Kleiber and Zeileis 2008). Currently, São Paulo is experiencing a second
137 wave of COVID-19.



138
139 Figure 1. Daily cases and deaths of COVID-19 in (a) boxplots and (b) time series in São Paulo, Brazil, between
140 March 27th, 2020 and January 12nd, 2021 (Saúde 2021). The smooth lines on panel b) are the LOESS
141 regression made with ggplot2 and R (R Core Team 2020; Wickham 2016).
142

143 We obtained mobility indices datasets from Google mobility trends (Google, 2020) and the Intelligent Monitoring
144 System for the city of São Paulo (SIMI-SP). The Google data is based on the use of smart devices such as
145 cellphones, vehicle trackers, and other GPS enabled systems². The data reported by Google consists in mobility
146 trends related to places as percentage change from baseline, with baseline as the median value, for each day of the
147 week, during the 5-week period January 3rd and February 6th, 2020. We selected the mobility trend "residential",
148 because it better represent the situation of spatial isolation (Hereafter Residential Mobility Index, RMI). The SIMI-
149 SP data is collected by network companies which receive cellphone signals by triangulating with the nearest
150 cellphone communication tower³. This means that SIMI-SP does not need internet to collect mobility information.
151 Both indices are shown on Figure 2, meaning that higher values represent more stay-at-home and while lower
152 values pre-quarantine conditions. RMI is an indicator that represent exposure in two ways, first, staying out of home
153 increases the chances of getting infections with SARS-CoV2 present in aerosols (Morawska and Milton 2020) and
154 second, increases the exposure to air pollution with deleterious effect on human health which could pose a
155 synergetic effect. The trend on both RMI shows steady decline ahead of the start of quarantine on March 24th, 2020
156 (black vertical line) (GESP 2020). The median RMI for Google data 13.51% and for RMI SIMI-SP is 44.75% for
157 the whole period. The median RMI for the pre-quarantine period (first 15 days of March 2020), are -1% for Google
158 and 31.30% for SIMI-SP and after the quarantine 14% for Google and 45.48% for SIMI-SP.

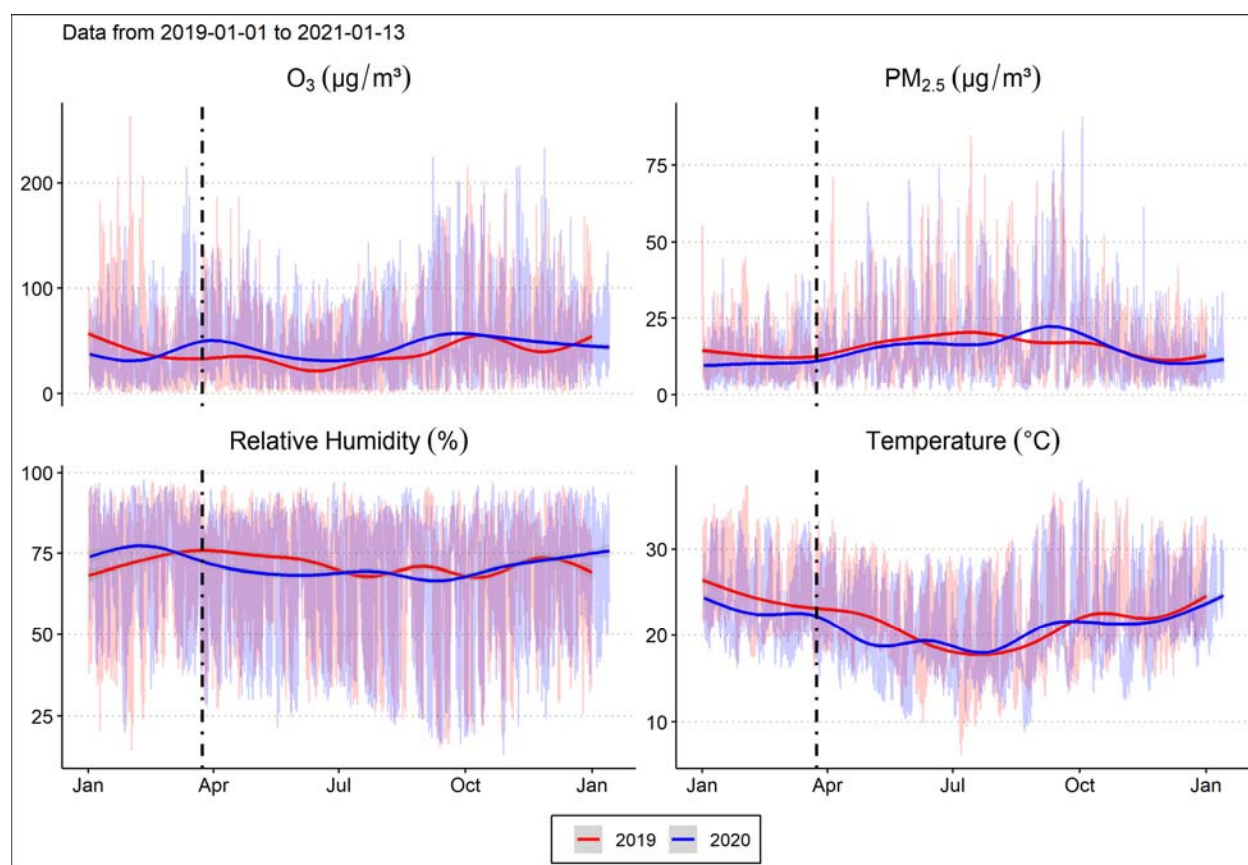
² <https://www.google.com/covid19/mobility/>



159
160
161
162
163
164
Figure 2. RMI values in São Paulo, Brazil, in a) boxplots and b) times series between January 15th and December 29th, 2020 for RMI Google (Google 2021) and between February 26, 2020 and January 3, 2021. Black vertical line shows when started the quarantine in São Paulo on March, 24. The smooth lines on panel b) are the LOESS regression made with ggplot2 and R (R Core Team 2020; Wickham 2016).

165 Air pollution and meteorology hourly surface measurements were obtained from the air quality system (QUALAR)
166 operated by the Environmental Agency of Sao Paulo State (CETESB, 2020). QUALAR archives air quality real-
167 time data using several stations spread in São Paulo. Hourly averages of O₃ (ug/m³), PM_{2.5} (ug/m³), relative humidity
168 (%) and temperature (°C) are shown in Figure 3, between January 01st, 2019 and January 4th, 2021. Locally
169 estimated scatterplot smoothing (or local regression LOESS) show that that the O₃ incremented after the quarantine
170 and remained higher than 2019 during most of 2020. The concentrations of PM2.5 during 2020 were lower than
171 2019, related to the decrease in human activity and also, as reported by other studies (Bolaño-Ortiz et al. 2020;
172 Debone et al. 2020; Nakada and Urban 2020), and just in September concentration increased. The quarantine
173 beginning coincided with the dry season beginning at São Paulo, presenting a decline in temperature compared to
174 the early months of 2020. The most significant feature of the São Paulo dry season (April to November), the wet
175 season counterpart (Vera et al. 2006), is the non-significative precipitation amount, caused by weak isolated events,
176 and long periods with no precipitation occurring in between (Rehbein et al. 2018), and the very low relative
177 humidity during the daytime (climate reports from the Climate Group of Studies - GrEC/USP,
178 <http://www.grec.iag.usp.br>). Also, a general decreasing in temperature occurs according to the austral winter and
179 presenting drops in temperature, associated to the synoptic systems crossing São Paulo and generally are not able to

180 organize convection (GrEC/USP, <http://www.grec.iag.usp.br>) or even sea breezes that eventually reaches the interior
181 of São Paulo (Freitas et al. 2007). In 2020, for instance, from April 3rd -May 3rd, 2020 there was very few (2 mm at
182 São Paulo-SESC Interlagos station, in the south of São Paulo) or no precipitation (at the São Paulo-Mirante de
183 Santana station, in the north of São Paulo) according to the official meteorological stations (www.inmet.gov.br),
184 while synoptic systems (such as cold fronts) were observed (CPTEC/INPE, <https://www.cptec.inpe.br>; GrEC/USP,
185 <http://www.grec.iag.usp.br>). The first semester of 2020 was drier and colder than 2019, but during the second
186 semester, relative humidity and temperature remained similar.



187
188 Figure 3. Hourly means of O₃ (µg/m³), PM_{2.5} (µg/m³) and Air Temperature (°C) between January 1st 2020 and
189 January 4th, 2021 for the city of São Paulo, Brazil (CETESB 2021). The means considered the parameters from the
190 stations Congonhas, Cid.Universitária-USP-Ipen, Santana, Ibirapuera, Mooca, Pinheiros and Parque D. Pedro II.
191 The red and blue lines are the automatic LOESS regression made with ggplot2 and R (R Core Team 2020; Wickham
192 2016).
193

194 *Association between mobility and COVID-19*

195 The statistical analyses consisted of the application of the generalized additive model (GAM) (Hastie and Tibshirani
196 1990). One of the most common applications of this framework consists of a semi-parametric model in

197 environmental studies to understand the associations between air pollution and health outcomes by controlling other
198 factors such as meteorology (Dominici et al. 2004; Peng and Dominici 2008). Recently, a study has shown that air
199 pollution can increase up to 15% of COVID-19 mortality and worldwide, 27% in East Asia, 19% in Europe and 17%
200 in North America (Pozzer et al. 2020). It has been shown that health effects of air pollution is related to previous
201 days' exposure (Abrutzky et al., 2013; Carracedo-Martínez et al., 2010; Leitte et al., 2009). In this study we need to
202 consider the incubation period for COVID-19, that is the period of time between the exposure to SARS-CoV2 and
203 the symptom onset. Furthermore, in this study we want to characterize how the exposure, measured by the mobility
204 indices, is associated with COVID-19. It has been reported that the incubation period for COVID-19 is 5.1 days
205 (95% CI, 4.5 to 5.8 days (Kraemer et al. 2020; Lauer et al. 2020), Lai et al (2020) found between 2 and 14 days with
206 a mean of 6.4 days another (Lai et al. 2020). Therefore, we calculated moving averages between 4 and 21 days of
207 mobility and environmental factors, and study possible associations with COVID-19. We used thin plate splines for
208 accounting confounding factors of $PM_{2.5}$, O_3 , temperature, relative humidity, day of the week and time, including
209 interactions between the variables with quasi-poisson and negative binomial distributions to capture over-dispersion
210 (Wood 2017; Zeileis et al. 2008). For instance, tropospheric O_3 is a secondary pollutant generated by reactions
211 between NO_x , Volatile Organic Compounds and solar radiation (Jacob 1999), and as the diurnal cycle of
212 temperature follows solar cycle, we would expect statistical interactions between O_3 and temperature. To identify
213 associations between mobility and COVID-19, by controlling confounding factors, we used the general equation 1.
214 We performed a detailed sensitivity analyses between the variables, shown supplementary material S1.

$$(1) \quad \log(u_i) = \beta_0 + \beta_1 * RMI_{m,n} + s(PM_{2.5m}) + s(O_{3m}) + s(RH_m) + s(temp_m) + s(time) + s(dow)$$

215
216 Where $\log(u)$ is the log-transform of the daily cases and deaths of COVID-19 with a quasi-poisson or negative
217 binomial distribution i , β_0 is the intercept β_1 is the coefficient that represents the association of $RMI_{m,n}$ moving
218 average m using mobility data n from Google or SIMI-SP on cases, s the thin plate, and $temp$ temperature, RH
219 relative humidity, $PM_{2.5}$ and O_3 atmospheric pollutants, $time$ represents each day to account unobserved factors,
220 $s(dow)$ is the cubic spline function with dimension of 7 to account for each day of the week. We used thin-plate
221 splines to avoid knot placement and, therefore, avoid overfitting (Wood 2003). The predicted number of COVID-19
222 cases is then $\exp(\beta_0 + \beta_1 * RMI_i)$, which is conditionally to the other predictors. Although more pollutants are
223 reported by São Paulo (QUALAR) air quality stations, e.g., NO_2 , CO , and PM_{10} , we limited the model to $PM_{2.5}$ and

224 O₃ to avoid multicollinearity between PM_{2.5} and these other species. As the objective of this study estimate the
225 associations between daily residential mobility index (RMI), air pollution, and meteorology, and daily cases and
226 deaths for COVID-19 in São Paulo, Brazil, the data were filtered starting on March 24th, 2020. In order to apply
227 GAM, we used the R programming language and the library mgcv (v1.8.31) (R Core Team 2020; Wood 2017). One
228 limitation of our method is the limited sample, consisting of 292 days between March 27th, 2020 and December 12nd,
229 2020. Nevertheless, we performed a comprehensive sensitivity analyses, as we evaluated 18 equations with 4-21
230 moving average lag periods, and compared RMI data from Google and SIMI-SP with quasi-poisson and negative
231 binomial distributions, this resulted in 1296 regressions. To ensure consistency, we repeated the analyses with data
232 only until November 2020 finding similar results.

233 *Association between air pollution and COVID-19*

234 We also investigated the effects of air pollution on COVID-19. In this case, we are interested in evaluating the effect
235 of specific level of air pollution present on the same or previous specific days, rather than the moving average of air
236 pollution. Many papers have used lag models to identify associations with air pollution and health outcomes
237 (Gasparrini 2011; Peng and Dominici 2008). Therefore, we used lags to account for the delayed effect of air
238 pollution on COVID-19 with a quasi-poisson and negative binomial distributions (Wood 2017; Zeileis et al. 2008).
239 Thus, we used single-lag generalized additive models and different configuration for confounding variables with
240 thin plate splines. To identify associations between air pollution and COVID-19, by controlling confounding factors,
241 we used the general equation 2. A sensitivity analyses is available on supplementary material S2.

242

$$(2) \quad \log(u_i) = \beta_0 + \beta_1 * P_L + s(RMI_L) + s(temp_L) + s(time) + s(dow)$$

243

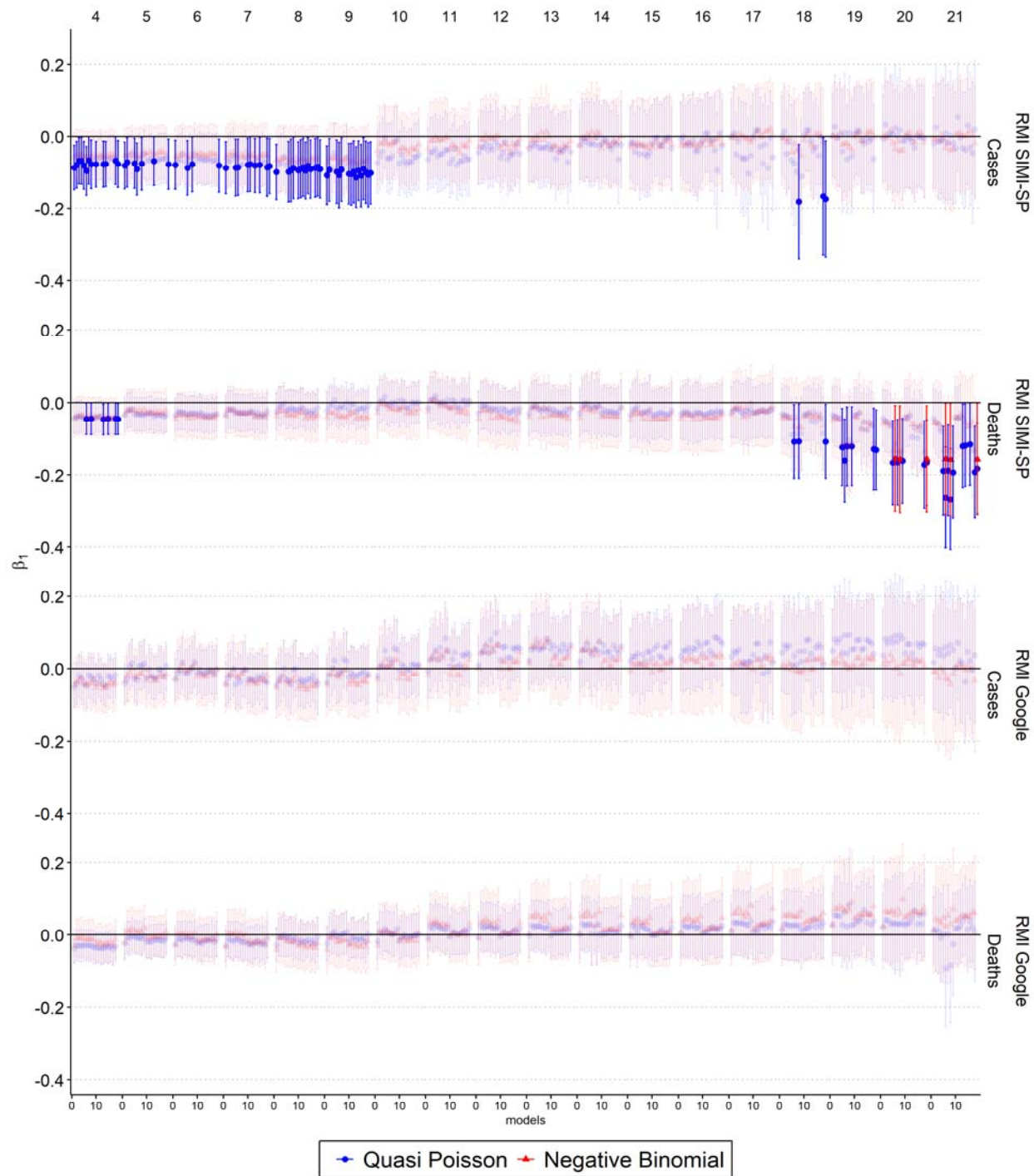
244 Where P represent the air pollutant concentrations of PM_{2.5L} or O_{3L}, temp_L, RH_L, and RMI_L are the delayed
245 environmental quantities at different lags l. The methodology is similar as we presented to calculate the effect of the
246 RMI index, but in this case, we controlled all the variables except air pollution. This is useful to compare with other
247 studies and to see the importance of exposure to air pollution and its effects on COVID-19 cases. Then, we
248 calculated the relative risks of new cases by the increment of 10 µg·m⁻³air pollution with the expression $\exp(\beta_1 * \text{pollutant})$.
249

250 **Results**

251 *Mobility and COVID-19 cases and deaths*

252 The associations between mobility indices RMI SIMI-SP and Google, parameter β_1 on equations 1-21, are shown on
253 Figure 4. The x-axis represents the model configurations from equations 1-20 and the facet labels 4-21 the delayed
254 effect of exposure as moving average. RMI Google was not significantly associated with COVID-19 in any model.
255 This can be explained by the low correlation between RMI Google with Cases -0.19 and with Deaths 0.1 (not
256 significant), as shown on Table 1 on supplementary material. Au contraire, we did find statistical association
257 between RMI SIMI-SP and COVID-19. It is evident increasing the mobility, that is staying out-of-home which
258 results in lower RMI, have a delayed effect increasing COVID-19 cases after four to nine days of exposure. While
259 some studies have shown that the incubation period for COVID-19 is between 4.5- 6.4 days (Kraemer et al. 2020;
260 Lai et al. 2020; Lauer et al. 2020) here we found more days to confirm the case appearance in Brazil the Reverse
261 transcription polymerase chain reaction (RT-PCR) tests to detect virus take between 3 days and one week. This
262 explanation also applies to the expected cases after seven, eight, nine and 18 days of exposure. Regarding the deaths,
263 we found more associations after 18-21 days of exposure, which makes sense because exposure between the
264 exposure and the deaths there is the severe disease, which naturally implies more days. We also found increased
265 deaths after 4 days of exposure, but the magnitude is also lower, near to zero. Furthermore, there is a trend after 14
266 days of exposure decreasing the β_1 , which means this association gains strength after more days, which after 21 days
267 of exposure most of models signalized the association with mobility and COVID-19 death. These associations were
268 found with negative binomial and quasi-poisson regressions, and the reader can reproduce these results following
269 the instructions available in this public repository <https://gitlab.com/ibarraespinosa/covid191>.

270



271
272
273
274
275

Figure 4. Coefficient of association between RMI SIMI-SP (%) and Google (%) and COVID-19 cases and deaths with a moving average of four to 21 days of delayed exposure with quasi-poisson and negative binomial distribution under different model configuration. β_1 non-significant associations (p -value > 0.05) are semi-transparent.

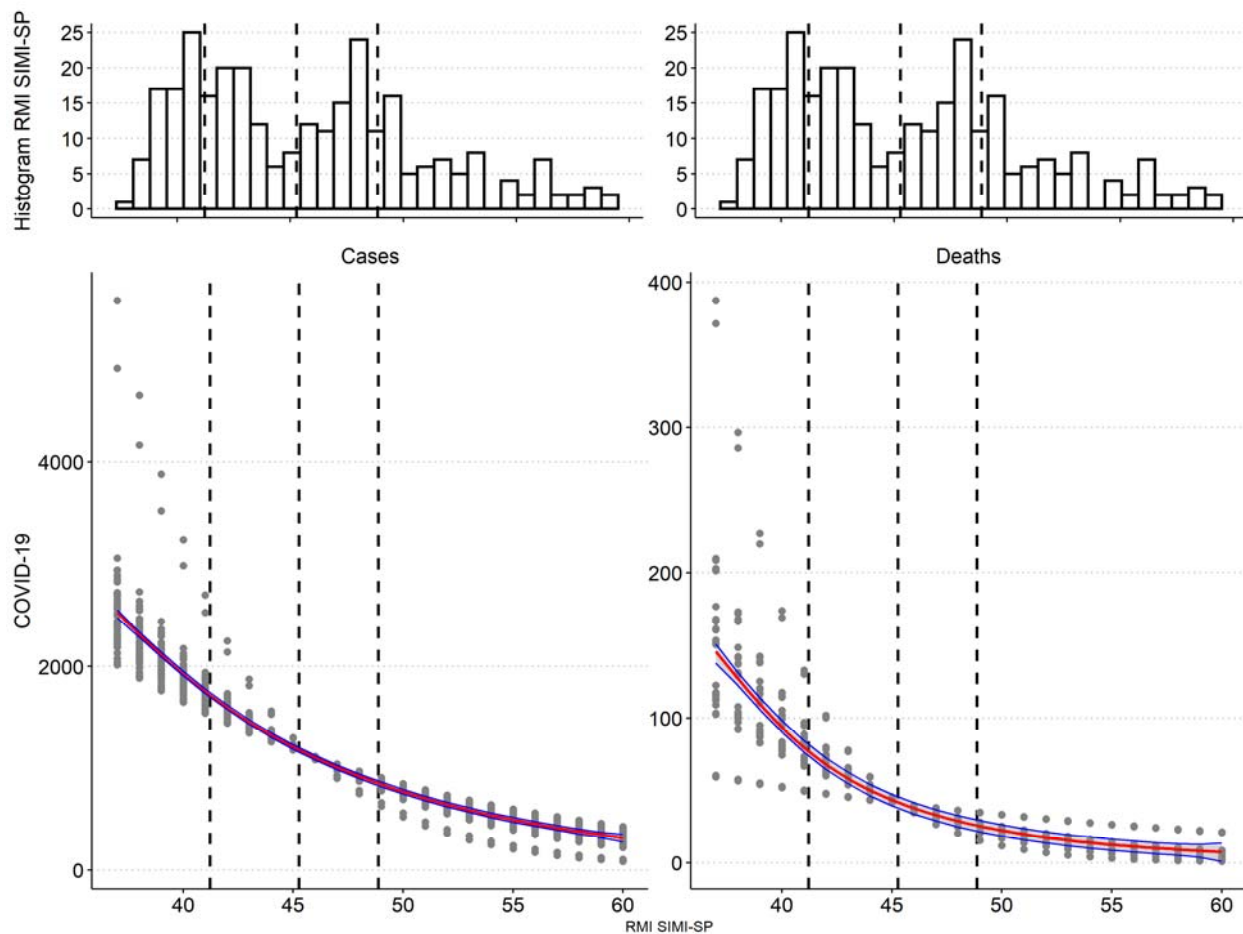
276
277

After analyzing the coefficients of association RMI and COVID-19, we calculated the expected outcomes after

278

moving average periods. As the RMI produce significant results after several days of exposure, we grouped the

279 results to obtain one curve exposure-response for cases and deaths, as shown on Figure 5. They grey points
280 represents the expected cases and deaths under different exposure levels, expressed as RMI SIMI-SP and the red
281 curves a gam regression with 95% confidence interval. We found strong associations between moving average of
282 delayed exposure and COVID-19 cases and deaths. In other words, when people stayed home COVID-19 cases and
283 deaths decreased. Likewise, with less RMI or increased outdoor activities, COVID-19 cases and resulting deaths
284 increased. The mean RMI SIMI-SP during pre-quarantine (before March 15) was 31.10% and just after the
285 quarantine (between March 27th and April 15th, 2020) was 54.77%, reducing the mobility. Then, the association
286 between RMI and cases was assessed with the median RMI SIMI-SP of 45.28% post-quarantine, presented as the
287 second vertical black line in Figure 5. Under this RMI we would expect 1,212 cases (95% CI: 1,189 to 1,235) and 44
288 deaths (95% CI: 40 to 47). We applied the expected outcomes for several RMI values to evaluate the resulting cases
289 for RMI extremes. For example, under the first quantile of RMI SIMI-SP, first vertical black line, that is 41.38%, it
290 would result in 1,757 cases (95% CI: 1,734 to 1,780) and 80 deaths (95% CI: 77 to 84) and under the third quantile
291 of 48.87%, third vertical black line, it would result in 846 cases (95% CI: 823 to 869) and 25 deaths (95% CI: 22 to
292 29). Analyzing the extreme values shows that, if the RMI SIMI-SP were 37.82% would result in 2,311 cases (95%
293 CI: 2,285 to 2,338) and 127 deaths (95% CI: 122 to 131) and with RMI SIMI-SP of 59.25%, 351 cases (95% CI:
294 325 to 378) and 8 deaths (95% CI: 4 to 13). Therefore, avoiding unnecessary outdoor activities and staying at home
295 would result in a reduction in expected cases and deaths. We added a repeated histogram of RMI SIMI-SP on the top
296 of Figure 5 so that it is easier to see the quantiles and histograms. This means that most of time RMI values are
297 below 49%, resulting that mobility was increased contributing to the current second COVID-19 wave occurring in
298 São Paulo.



299

300
301
302
303
304
305

Figure 5. Association between COVID-19 cases and deaths and the percentage of RMI SIMI-SP (%). The grey points show the association between COVID-19 and RMI after different periods of exposure. The red line represents the expected cases and deaths and blue lines upper and lower confidence intervals 95%. The vertical black lines show the first quantile, median and third quantile of RMI SIMI-SP. The histograms of RMI SIMI-SP are repeated.

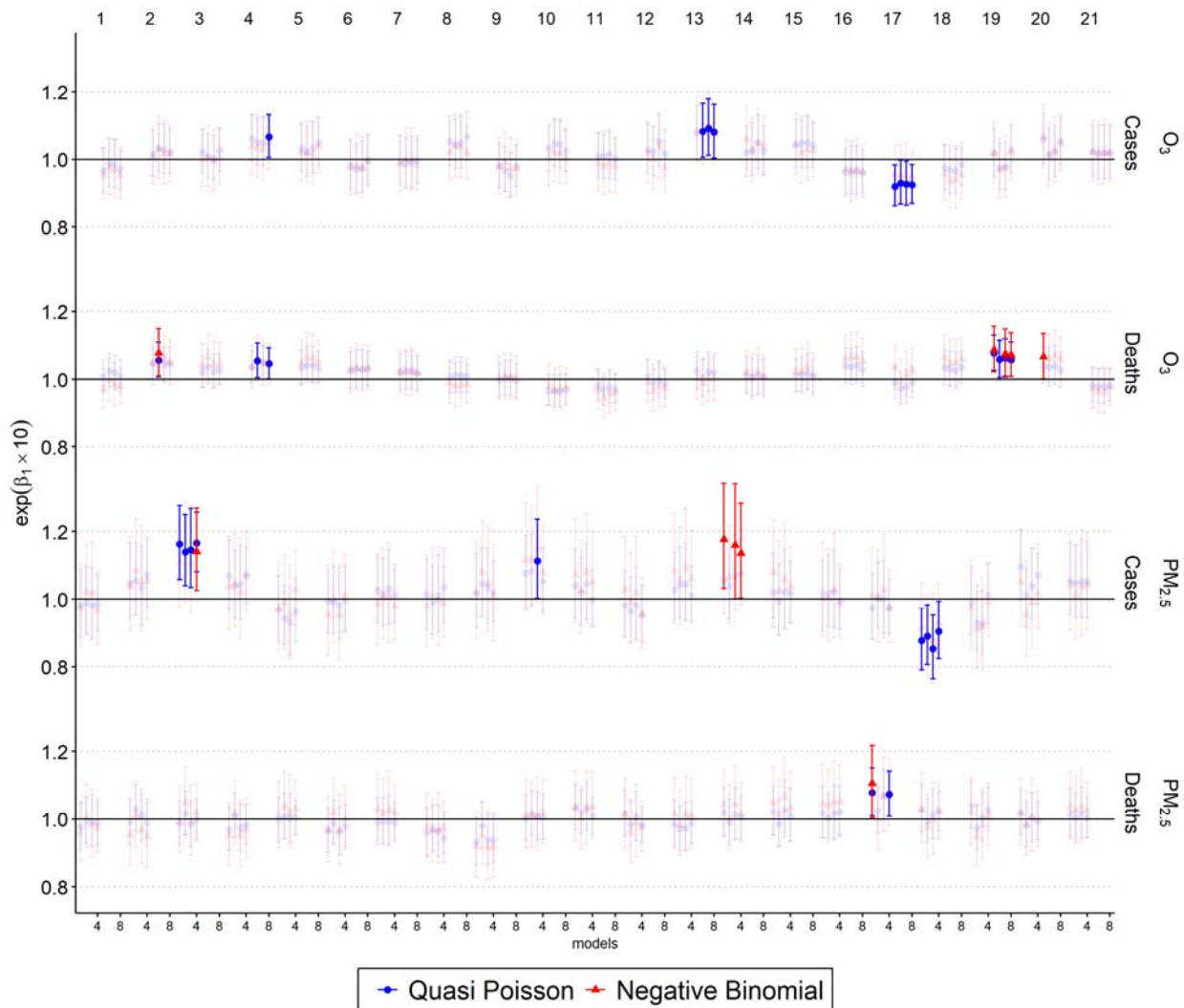
306
307

Air pollution and COVID-19 cases

308
309
310
311
312
313
314

We assessed the association between COVID-19 and increment of $10 \mu\text{g}\cdot\text{m}^{-3}$ of $\text{PM}_{2.5}$ and O_3 . Figure 6 shows the relative risks of COVID-19 cases and deaths after 1-21 days of exposure. We found that $\text{PM}_{2.5}$ and O_3 have positive relative risks for cases and deaths with both distributions. Furthermore, O_3 increment cases after four and 13 days of exposure, and deaths after two, four, 19 and 20 days of exposure. $\text{PM}_{2.5}$ poses positive relative risks after two, 10 and 13 days of exposure for cases and 17 days of exposure for deaths. Nevertheless, there are some relative risks below 1, which would provide protective factors for O_3 and $\text{PM}_{2.5}$ after 17 days for cases where more research is needed. The order of magnitude of relative risks within lagged group is very similar with different models, as shown

315 on equations 21-28. Therefore, we averaged the relative risks within groups resulting that an increment of $10 \mu\text{g}\cdot\text{m}^{-3}$
 316 of O_3 produce cases-relative risks of 1.066 (95% CI: 1.005 to 1.131) and 1.084 (95% CI: 1.007 to 1.168) after four
 317 and 13 days of exposure, respectively. In the case of deaths, the O_3 -related relative risks are 1.067 (95% CI: 1.008 to
 318 1.129), 1.050 (95% CI: 1.003 to 1.100), 1.070 (95% CI: 1.012 to 1.131) and 1.066 (95% CI: 1.001 to 1.135) after
 319 two, four, 19 and 20 days of exposure, respectively. Likewise, an increment of $10 \mu\text{g}\cdot\text{m}^{-3}$ of $\text{PM}_{2.5}$ produce cases-
 320 relative risks 1.151 (95% CI: 1.048 to 1.264), 1.113 (95% CI: 1.002 to 1.236) and 1.157(95% CI: 1.012 to 1.323)
 321 after three, 10 and 14 days of exposure and the risk for death is 1.086 (95% CI: 1.008 to 1.170) after 17 days. Based
 322 on these results, air pollution significantly increases COVID-19 cases and deaths. The mean relative risks for cases
 323 are 1.140 for $\text{PM}_{2.5}$ and 1.075 for O_3 , meaning that $\text{PM}_{2.5}$ increments 1.06 times more COVID-19 cases than O_3 . In
 324 the case of deaths, the relative risk for O_3 is 1.063 and for $\text{PM}_{2.5}$ 1.086.



325

326 Figure 6. The relative risks of COVID-19 cases and deaths due to $10 \mu\text{g}\cdot\text{m}^{-3}$ of $\text{PM}_{2.5}$ and O_3 after 1-21 days of
327 exposure with single-lag models. β_1 non-significant associations (p-value > 0.05) are semi-transparent.
328

329 Discussion

330 In this study, we used a semiparametric Generalized Additive Model (GAM) to explore possible associations
331 between RMI, air pollutants, and COVID-19 cases and deaths in São Paulo, Brazil, for March 27th, 2020 through
332 December 30th, 2020. We controlled environmental factors such as air temperature, relative humidity, and air
333 pollutant concentrations ($\text{PM}_{2.5}$ and O_3) with thin splines. Arguably, models like the one used here are more
334 commonly applied to much larger datasets. However, we present findings and caveats, to provide early evidence on
335 the transmission of COVID-19, and as part of efforts to highlight the potential value of the recently developed
336 mobility indices.

337
338 We found statistical associations between RMI and COVID-19 cases and a lower RMI (i.e., the increase of residents
339 staying-at-home) increase COVID-19 cases. Likewise, increased RMI or less outdoor activities decreases COVID-
340 19 cases. The median RMI after quarantine started was 45.28%, which represents most of the period of study. Under
341 this RMI, we would expect 1,212 cases (95% CI: 1,189 to 1,235) and 44 deaths (95% CI: 40 to 47). São Paulo's
342 COVID-19 median values are 1,214 and 46 for cases and deaths, which means that our predictions align with our
343 observations and previous literature regarding COVID-19 cases (Martins et al. 2020). We analyzed RMI values to
344 provide policymakers with several options to mitigate the number of COVID-19 cases and deaths and support public
345 health system. Then, if the mobility is reduced by increasing the RMI SIMI-SP index from 45.28% to 50.00%, we
346 would expect 774 (95% CI: 751 to 797) cases and 23 (95% CI: 19 to 26) deaths, representing a reduction 438 cases
347 and 21 deaths by only increasing the RMI 5%. Therefore, a policymaker can use this information and define RMI
348 targets based on the capacity of their health system.

349 We evaluated the effect of moving average air pollution on COVID-19 cases and deaths and we found strong
350 associations. The average of the significant relative risk over the 21 days of delayed exposure is 1.140 (95% CI:
351 1.021 to 1.274) for cases and 1.086 (95% CI: 1.008 to 1.170) for deaths due to an increment of $10 \mu\text{g}\cdot\text{m}^{-3}$ of $\text{PM}_{2.5}$,
352 and 1.075 (95% CI: 1.006 to 1.150) for cases and 1.086 (95% CI: 1.008 to 1.170) for deaths due to an increment of
353 $10 \mu\text{g}\cdot\text{m}^{-3}$ of O_3 . A global study about the association between air pollution and death-risk for COVID-19 found that
354 in South America the attributable fraction (AF) of COVID-19 mortality due $\text{PM}_{2.5}$, calculated as $1-1/\text{RR}$, is

355 approximately 15% in São Paulo (Pozzer et al. 2020), while the AF due the increment of PM_{2.5} in Sao Paulo is
356 12.28. Another study in China showed that 10 µg·m⁻³ of O₃ results in relative risk of 1.047 (Zhu et al. 2020), which
357 is slightly lower than our results of 1.075 presented in this study. Finally, Zhang et al (2021) found a country-
358 average relative risk for PM_{2.5} of 1.06 (95% CI: 1.03 to 1.08), while relative risk found in Northeast and Southwest
359 China oscillate around 1.2, similar to our result 1.140. Therefore, our results are in agreement with other studies.
360 As this study is based on 292 days of data, future research should consider the potential effects of a more extended
361 period to study the effect of air pollution on COVID-19 related cases and deaths. Recent social distancing and
362 quarantines have been introduced on unprecedented scales, made necessary by the high transmissivity and severity
363 of COVID-19, and the lack of effective vaccines or testing programs (Cohen and Kupferschmidt 2020). This
364 strongly suggests that mobility indices can be used to study infectious disease transmission and assess the
365 effectiveness of large-scale isolation and quarantine style management activities. Therefore, policymakers can use
366 the new mobility dataset to enforce efforts to implement more effective social distancing and quarantine-based
367 management strategies for COVID-19 in the other states of Brazil.

368 **Conclusion**

369 Spatial distancing was proven to be a determining factor to control COVID-19 cases and deaths. RMI is also
370 significantly associated with COVID-19 cases and deaths. Higher RMI values lower COVID-19 cases while lower
371 values are related to a higher number of COVID-19 cases and deaths. Our predictions align with mean observations
372 of COVID-19 cases. Air pollutant models revealed that an increment of 10 µg·m⁻³ of PM_{2.5} and O₃ produces a
373 relative risk of 1.140 (95% CI: 1.021 to 1.274) for cases and of 1.086 (95% CI: 1.008 to 1.170), and 1.075 (95% CI:
374 1.006 to 1.150) for cases and 1.063 (95% CI: 1.006 to 1.124) for deaths, respectively.

375 **References**

- 376 Abrutzky R, Ibarra S, Matus P, Romero-Lankao P, Pereyra V, Dawidowski L. 2013. Atmospheric pollution and
377 mortality. A comparative study between two Latin American cities: Buenos Aires (Argentina) and Santiago
378 (Chile). *Int J Environ Heal* 6; doi:10.1504/IJENVH.2013.056977.
- 379 Alves THE, de Souza TA, de Almeida Silva S, Ramos NA, de Oliveira SV. 2020. Underreporting of death by COVID-19
380 in Brazil's second most populous state. medRxiv.
- 381 Badr HS, Du H, Marshall M, Dong E, Squire MM, Gardner LM. 2020. Association between mobility patterns and

- 382 COVID-19 transmission in the USA: a mathematical modelling study. *Lancet Infect Dis* 20: 1247–1254.
- 383 Bolaño-Ortiz TR, Camargo-Caicedo Y, Puliafito SE, Ruggeri MF, Bolaño-Diaz S, Pascual-Flores R, et al. 2020. Spread
384 of SARS-CoV-2 through Latin America and the Caribbean region: a look from its economic conditions, climate
385 and air pollution indicators. *Environ Res* 109938; doi:<https://doi.org/10.1016/j.envres.2020.109938>.
- 386 Buss LF, Prete CA, Abraham CMM, Mendrone A, Salomon T, de Almeida-Neto C, et al. 2020. Three-quarters attack
387 rate of SARS-CoV-2 in the Brazilian Amazon during a largely unmitigated epidemic. *Science* (80-);
388 doi:[10.1126/science.abe9728](https://doi.org/10.1126/science.abe9728).
- 389 Carracedo-Martínez E, Taracido M, Tobias A, Saez M, Figueiras A. 2010. Case-crossover analysis of air pollution
390 health effects: a systematic review of methodology and application. *Environ Health Perspect* 118: 1173–
391 1182.
- 392 CETESB. 2021. Sistema de monitoramento de qualidade do ar QUALAR. Available:
393 <https://qualar.cetesb.sp.gov.br/> [accessed 4 January 2021].
- 394 Cohen J, Kupferschmidt K. 2020. Countries test tactics in ‘war’ against COVID-19.
- 395 Dantas G, Siciliano B, França BB, da Silva CM, Arbilla G. 2020. The impact of COVID-19 partial lockdown on the air
396 quality of the city of Rio de Janeiro, Brazil. *Sci Total Environ* 729:139085;
397 doi:<https://doi.org/10.1016/j.scitotenv.2020.139085>.
- 398 Debone D, da Costa M V, Miraglia SGEK. 2020. 90 days of COVID-19 social distancing and its impacts on air quality
399 and health in Sao Paulo, Brazil. *Sustainability* 12: 7440.
- 400 Dominici F, McDermott A, Hastie TJ. 2004. Improved semiparametric time series models of air pollution and
401 mortality. *J Am Stat Assoc* 99: 938–948.
- 402 Dong E, Du H, Gardner L. 2020. An interactive web-based dashboard to track COVID-19 in real time. *Lancet Infect*
403 *Dis* 20: 533–534.
- 404 Dutheil F, Baker JS, Navel V. 2020. COVID-19 as a factor influencing air pollution? *Environ Pollut* (Barking, Essex
405 1987).

- 406 Freitas ED, Rozoff CM, Cotton WR, Dias PLS. 2007. Interactions of an urban heat island and sea-breeze circulations
407 during winter over the metropolitan area of São Paulo, Brazil. *Boundary-Layer Meteorol* 122: 43–65.
- 408 Freitas, Ibarra-Espinosa S, Gavidia-Calderón M, Rehbein A, Abou Rafeem Sameh Martins J, Martins L, et al. 2020.
409 Mobility restrictions and air quality under COVID-19 pandemic in São Paulo, Brazil. Preprints;
410 doi:10.20944/preprints202004.0515.v1.
- 411 G1. 2020. Governo obedece à ordem do STF, e Ministério da Saúde volta a divulgar dados completos da covid |
412 Política | G1.
- 413 Gasparrini A. 2011. Distributed lag linear and non-linear models in {R}: the package {dlnm}. *J Stat Softw* 43: 1–20.
- 414 Gatalo O, Tseng K, Hamilton A, Lin G, Klein E. 2020. Associations between phone mobility data and COVID-19 cases.
415 *Lancet Infect Dis*.
- 416 GESP. 2020. Decreta quarentena no Estado de São Paulo, no contexto da pandemia do COVID-19. Available:
417 [http://dobuscadireta.imprensaoficial.com.br/default.aspx?DataPublicacao=20200323&Caderno=DOE-](http://dobuscadireta.imprensaoficial.com.br/default.aspx?DataPublicacao=20200323&Caderno=DOE-I&NumeroPagina=1)
418 [I&NumeroPagina=1.](http://dobuscadireta.imprensaoficial.com.br/default.aspx?DataPublicacao=20200323&Caderno=DOE-I&NumeroPagina=1)
- 419 Google. 2021. Community Mobility Reports. Available: <https://www.google.com/covid19/mobility/> [accessed 4
420 January 2021].
- 421 Gupta R, Collier D, De Marco A, Ferreira I, Meng B, Datir R, et al. 2021. SARS-CoV-2 B. 1.1. 7 escape from mRNA
422 vaccine-elicited neutralizing antibodies. Prepr (Version 1) available Res Sq [[https://doi.org/10.21203/rs-
423 156101/v1](https://doi.org/10.21203/rs.3.rs-156101/v1)].
- 424 Hastie TJ, Tibshirani RJ. 1990. *Generalized additive models*. CRC press.
- 425 IBGE. 2014. Instituto Brasileiro de Geografia e Estatística -- Población estimada 2014.
- 426 Jacob DJ. 1999. *Introduction to atmospheric chemistry*. Princeton University Press.
- 427 Kleiber C, Zeileis A. 2008. *Applied econometrics with R*. Springer Science & Business Media.
- 428 Kraemer MUG, Yang C-H, Gutierrez B, Wu C-H, Klein B, Pigott DM, et al. 2020. The effect of human mobility and
429 control measures on the COVID-19 epidemic in China. *Science (80-)* 368: 493–497.

- 430 Kupferschmidt K. 2021. Fast-spreading U.K. virus variant raises alarms. *Science* (80-) 371:9–10;
431 doi:10.1126/science.371.6524.9.
- 432 Lai C-C, Shih T-P, Ko W-C, Tang H-J, Hsueh P-R. 2020. Severe acute respiratory syndrome coronavirus 2 (SARS-CoV-
433 2) and corona virus disease-2019 (COVID-19): the epidemic and the challenges. *Int J Antimicrob Agents*
434 105924.
- 435 Lauer SA, Grantz KH, Bi Q, Jones FK, Zheng Q, Meredith HR, et al. 2020. The incubation period of coronavirus
436 disease 2019 (COVID-19) from publicly reported confirmed cases: estimation and application. *Ann Intern*
437 *Med*.
- 438 Leitte AM, Petrescu C, Franck U, Richter M, Suci O, Ionovici R, et al. 2009. Respiratory health, effects of ambient
439 air pollution and its modification by air humidity in Drobeta-Turnu Severin, Romania. *Sci Total Environ* 407:
440 4004–4011.
- 441 Martins LD, da Silva I, Batista WV, de Fátima Andrade M, de Freitas ED, Martins JA. 2020. How socio-economic and
442 atmospheric variables impact COVID-19 and influenza outbreaks in tropical and subtropical regions of Brazil.
443 *Environ Res* 191: 110184.
- 444 Morawska L, Milton DK. 2020. It Is Time to Address Airborne Transmission of Coronavirus Disease 2019 (COVID-
445 19). *Clin Infect Dis*; doi:10.1093/cid/ciaa939.
- 446 Morris DH, Yinda KC, Gamble A, Rossine FW, Huang Q, Bushmaker T, et al. 2020. Mechanistic theory predicts the
447 effects of temperature and humidity on inactivation of SARS-CoV-2 and other enveloped viruses. *bioRxiv*;
448 doi:10.1101/2020.10.16.341883.
- 449 Nakada LYK, Urban RC. 2020. COVID-19 pandemic: Impacts on the air quality during the partial lockdown in São
450 Paulo state, Brazil. *Sci Total Environ* 730:139087; doi:<https://doi.org/10.1016/j.scitotenv.2020.139087>.
- 451 Peng RD, Dominici F. 2008. Statistical methods for environmental epidemiology with R. R a case study air Pollut
452 Heal.
- 453 Pozzer A, Dominici F, Haines A, Witt C, Münzel T, Lelieveld J. 2020. Regional and global contributions of air

- 454 pollution to risk of death from COVID-19. *Cardiovasc Res*; doi:10.1093/cvr/cvaa288.
- 455 R Core Team. 2020. R: A Language and Environment for Statistical Computing.
- 456 Rehbein A, Dutra LMM, Ambrizzi T, da Rocha RP, Reboita MS, da Silva GAM, et al. 2018. Severe weather events
457 over southeastern Brazil during the 2016 dry season. *Adv Meteorol* 2018.
- 458 Saúde M de. 2021. Coronavírus Brasil. Available: <https://covid.saude.gov.br/> [accessed 4 January 2021].
- 459 Tian H, Liu Y, Li Y, Wu C-H, Chen B, Kraemer MUG, et al. 2020. An investigation of transmission control measures
460 during the first 50 days of the COVID-19 epidemic in China. *Science* (80-) 368:638–642;
461 doi:10.1126/science.abb6105.
- 462 Tosepu R, Gunawan J, Effendy DS, Lestari H, Bahar H, Asfian P, et al. 2020. Correlation between weather and Covid-
463 19 pandemic in Jakarta, Indonesia. *Sci Total Environ* 138436.
- 464 Vera C, Higgins W, Amador J, Ambrizzi T, Garreaud R, Gochis D, et al. 2006. Toward a Unified View of the American
465 Monsoon Systems. *J Clim* 19:4977–5000; doi:10.1175/JCLI3896.1.
- 466 Wang J, Tang K, Feng K, Lv W. 2020a. High temperature and high humidity reduce the transmission of COVID-19.
467 Available SSRN 3551767.
- 468 Wang M, Jiang A, Gong L, Luo L, Guo W, Li C, et al. 2020b. Temperature significant change COVID-19 Transmission
469 in 429 cities. medRxiv.
- 470 Wickham H. 2016. *ggplot2: Elegant Graphics for Data Analysis*. Springer-Verlag New York.
- 471 Wood S. 2017. *Generalized Additive Models: An Introduction with R*. Chapman and Hall/CRC.
- 472 Wood SN. 2003. Thin plate regression splines. *J R Stat Soc Ser B (Statistical Methodol* 65: 95–114.
- 473 Wu X, Nethery RC, Sabath BM, Braun D, Dominici F. 2020. Exposure to air pollution and COVID-19 mortality in the
474 United States. medRxiv.
- 475 Zeileis A, Kleiber C, Jackman S. 2008. Regression Models for Count Data in R. *J Stat Software, Artic* 27:1–25;
476 doi:10.18637/jss.v027.i08.

477 Zhang X, Tang M, Guo F, Wei F, Yu Z, Gao K, et al. 2021. Associations between air pollution and COVID-19 epidemic
478 during quarantine period in China. Environ Pollut 268:115897;
479 doi:<https://doi.org/10.1016/j.envpol.2020.115897>.

480 Zhu Y, Xie J, Huang F, Cao L. 2020. Association between short-term exposure to air pollution and COVID-19
481 infection: Evidence from China. Sci Total Environ 727:138704;
482 doi:<https://doi.org/10.1016/j.scitotenv.2020.138704>.

483

484 **Acknowledgments:** The authors would like to thank the São Paulo's Environmental Agency (CETESB), for making
485 possible the use of air quality measurements through its QUALAR platform. The authors would like to thank Lena
486 Goodwin for the support. **Funding:** This work was supported by FAPESP (Grants No. 2015/03804-9, 2016/18438-0
487 and 2016/10557-0) and "Coordenação de Aperfeiçoamento de Pessoal de Nível Superior – Brasil" (CAPES) Finance
488 Code 001; **Author contributions:** Conceptualization, S.I.E. and E.F.; Methodology, S.I.E, E.F., F.D., K.R., A.R.;
489 Investigation, S.I.E, E.F., K.R., F.D. and A.R.; Writing – Original Draft, S.I.E., K.R. and E.D.; Writing – Review &
490 Editing, S.I.E., K.R., E.F., F.D. and A.R.; Funding Acquisition, E.F.; Supervision, E.F. and F.D; **Competing**
491 **interests:** Authors declare no competing interests; and **Data and materials availability:** All the data and code used
492 in this study is available at the only repository <https://gitlab.com/ibarraespinoza/covid191>.