

Uncovering Survivorship Bias in Longitudinal Mental Health Surveys During the COVID-19 Pandemic

Title

Uncovering Survivorship Bias in Longitudinal Mental Health Surveys During the COVID-19 Pandemic

Authors

Mark É. Czeisler*, A.B.¹⁻³, Joshua F. Wiley, Ph.D.¹, Charles A. Czeisler, Ph.D., M.D.^{1,4,5}, Shantha M.W. Rajaratnam[†], Ph.D.^{1,2,4,5}, Mark E. Howard[†], M.B.B.S., Ph.D.^{1,2,6}

* Corresponding author.

Materials & Correspondence

Correspondence to Mark Czeisler (mark.czeisler@fulbrightmail.org).

Mark É. Czeisler, A.B., Australian-American Fulbright Scholar and Ph.D. Candidate

Turner Institute for Brain and Mental Health, Monash University,

Level 5, 18 Innovation Walk, Clayton Campus, Clayton, 3800, Victoria, Australia

[†] Joint senior authors.

Affiliations

¹ Turner Institute for Brain and Mental Health, Monash University, Melbourne, Victoria, Australia

² Institute for Breathing and Sleep, Austin Health, Melbourne, Victoria, Australia

³ Department of Psychiatry, Brigham & Women's Hospital, Boston, Massachusetts, United States

⁴ Division of Sleep and Circadian Disorders, Departments of Medicine and Neurology, Brigham & Women's Hospital, Boston, Massachusetts, United States

⁵ Division of Sleep Medicine, Harvard Medical School, Boston, Massachusetts, United States

⁶ Division of Medicine, University of Melbourne, Melbourne, Victoria, Australia

Author Open Researcher and Contributor Identifiers (ORCID IDs):

Uncovering Survivorship Bias in Longitudinal Mental Health Surveys During the COVID-19 Pandemic

Mark É. Czeisler (0000-0003-3100-7347)

Joshua F. Wiley (0000-0002-0271-6702)

Charles A. Czeisler (0000-0002-7408-1849)

Shantha M.W. Rajaratnam (0000-0001-7527-8558)

Mark E. Howard (0000-0001-7772-1496)

Manuscript type: Original Article

Main text word count: 3,094

Abstract word count: 249

Abstract

Background

Markedly elevated adverse mental health symptoms were widely observed early in the coronavirus disease 2019 (COVID-19) pandemic. Unlike the U.S., where cross-sectional data indicate anxiety and depression symptoms have remained elevated, such symptoms reportedly declined in the U.K., according to analysis of repeated measures from a largescale longitudinal study. However, nearly 40% of U.K. respondents (those who did not complete multiple follow-up surveys) were excluded from analysis, suggesting that survivorship bias might partially explain this discrepancy.

Methods

We therefore assessed survivorship bias among U.S. respondents invited to complete multiple mental health surveys during the pandemic. Survivorship bias was assessed for (1) demographic differences in follow-up survey participation, (2) differences in adjusted initial adverse mental health symptom prevalences, and (3) differences in follow-up survey participation based on mental health experiences.

Results

Adjusting for demographics, individuals who completed only one or two out of four surveys had higher prevalences of anxiety and depression symptoms in April 2020 (e.g., one-survey *versus* four-survey, anxiety symptoms, adjusted prevalence ratio [aPR]: 1.30, 95% confidence interval [CI]: 1.08-1.55, $P=0.0045$; depression symptoms, aPR: 1.43, 95% CI: 1.17-1.75, $P=0.00052$). Moreover, individuals who experienced incident anxiety or depression symptoms

Uncovering Survivorship Bias in Longitudinal Mental Health Surveys During the COVID-19 Pandemic

had higher odds of not completing follow-up surveys (adjusted odds ratio [aOR]: 1.68, 95% CI: 1.49-2.48, $P=0.0015$, aOR: 1.56, 95% CI: 1.15-2.12, $P=0.0046$, respectively).

Conclusions

Survivorship bias among longitudinal mental health survey respondents may lead to overly optimistic interpretations of mental health trends. Cross-sectional surveys may therefore provide more accurate estimates of population-level adverse mental health symptom prevalences.

Keywords

Survivorship bias, non-response, mental health, longitudinal surveys, COVID-19

Key messages

- Assessment of survivorship bias among 4,039 mental health survey respondents revealed that individuals who participated in fewer surveys had higher prevalences of anxiety and depression symptoms at the first timepoint and worse mental health trajectories over time.
- Individuals who experienced incident anxiety or depression symptoms in May 2020 after not having experienced these symptoms in April 2020 had higher odds of not completing subsequent follow-up surveys compared with those who did not experience these symptoms (adjusted odds ratio [OR]: 1.68, 95% CI: 1.49-2.48, $P=0.0015$, aOR: 1.56, 95% CI: 1.15-2.12, $P=0.0046$, respectively).
- Restricting analytic samples to only respondents who provide repeated assessments in longitudinal survey studies may introduce survivorship bias, which could lead to overly optimistic interpretations of mental health trends over time.
- Cross-sectional or planned missing data designs may provide more accurate estimates of adverse mental health symptom prevalences than longitudinal surveys.

Uncovering Survivorship Bias in Longitudinal Mental Health Surveys During the COVID-19 Pandemic

Introduction

Studies have documented acutely elevated prevalences of adverse mental health symptoms during the early months of the coronavirus disease 2019 (COVID-19) pandemic compared with pre-pandemic data.¹⁻⁹ Prevalences of clinically significant mental distress rose by approximately 40% in the U.K.,¹ and prevalences of anxiety and depression symptoms more than tripled in the U.S.²⁻⁴ Analysis of longitudinal U.K. survey data recently suggested that those increased prevalences may have been transient, with anxiety and depression symptoms declining among participants who completed two-or-more follow-up measures between April and August 2020.¹⁰ However, those longitudinal data from repeat-responders are not consistent with cross-sectional U.S. survey data, which indicate that levels of adverse mental health symptoms have remained persistently elevated.^{11,12} As 38.5% of U.K. respondents were excluded from analysis because did not complete multiple follow-up surveys, we analysed data from U.S. adults invited to complete surveys over a comparable time interval to determine if survivorship bias could account for the discrepancy between the published data from U.S. and U.K. adults. This investigation has practical and theoretical implications. Reliable assessment of the prevalences of adverse mental health symptoms could affect planning and resource allocation for mental health support services during the COVID-19 pandemic.¹³ More broadly, given that survivorship bias has not previously been reported to affect largescale internet-based mental health surveys, this investigation may influence mental health study design and interpretation of ongoing studies and previously published papers.

While bias induced by demographic differences in follow-up survey participation may be reduced by poststratification weighting using population estimates,¹⁴ this strategy cannot account for survivorship bias. Survivorship bias can be problematic if individuals who make it past a selection process are different than those who do not. In the context of longitudinal mental health surveys, this could result from restricting an analytic sample to respondents who consistently participated in surveys, ignoring individuals who dropped out. If the people who dropped out (i.e., study non-survivors) were to have meaningfully different mental health than those who remain active study participants (i.e., study survivors), the resulting analytic sample would be non-representative.

Longitudinal studies have provided evidence of survivorship bias related to mental health within specific populations.¹⁵⁻²³ For example, diagnosed depression has been associated with lower participation in follow-up surveys in parents and children^{15,16} and a naturalistic cohort on depression and anxiety,¹⁷ while assessment of three-

Uncovering Survivorship Bias in Longitudinal Mental Health Surveys During the COVID-19 Pandemic

year follow-up surveys in the Netherlands general population reported no association between mental health status at baseline and attrition.¹⁸ However, considerable effort was exerted to optimise participation, including a two-year initial contact and follow-up intervals, multiple attempts to recontact participants, and frequent contact between interviews. Other studies have that cancer survivors who completed surveys at multiple time points had higher health-related quality of life scores than those who completed surveys at a single timepoint¹⁹ and pregnant persons with psychological distress had higher odds of not completing follow-up surveys compared with pregnant persons without such distress.²⁰ Additionally, non-participation in follow-up surveys has been associated with smoking and alcohol use among trauma patients,²¹ and with lower perceived oral healthcare-specific self-efficacy among patients with chronic periodontitis.²² Finally, of 294 women who presented at an emergency department following sexual assault, 136 (46%) could not be reached within 48 hours, and 233 (79%) did not participate in six-month follow-up.²³ While anxiety and depression symptom ratings were attenuated in the analytic sample of 61 women who completed six-month follow-up surveys, women with higher rape-trauma-symptom scores were more likely to decline follow-up surveys. If survivorship bias existed in that study, generalizing data supporting declining adverse mental health levels from only those with lower initial rape-trauma-symptom scores could lead to an overly optimistic interpretation of mental health following sexual assault.

To our knowledge, survivorship bias assessment has not been described in general population longitudinal mental health internet-based survey data and is seldom addressed. As numerous studies have responded to the call for mental health research by launching longitudinal mental health survey studies, we undertook a robust assessment of potential survivorship bias in our longitudinal mental health survey study.

Methods

Study design

We conducted a retrospective analysis of U.S. participants in The COVID-19 Outbreak Public Evaluation (COPE) Initiative (www.thecopeinitiative.org).²⁴ Internet-based surveys were administered through Qualtrics, LLC²⁴ to 4,042 U.S. adults aged ≥ 18 years during April 2-8, 2020 (April-2020). The sample included 3,010 (74.5%) from across the U.S., plus additional respondents from New York City (n: 507 [12.5%]) and Los Angeles (n: 525 [13.0%]) to recruit participants from cities with different prevalences of SARS-CoV-2 during the early months of the pandemic.²⁶ All respondents were invited to complete follow-up surveys during May 5-12, 2020 (May-2020) and

Uncovering Survivorship Bias in Longitudinal Mental Health Surveys During the COVID-19 Pandemic

June 24-30, 2020 (June-2020).² Respondents who completed at least one of these follow-up surveys were also invited to complete surveys during August 28-September 6, 2020 (September-2020). Quota sampling and survey weighting (iterative proportional fitting with weights trimmed between 0.3 and 3.0, inclusive) were employed to improve sample representativeness by gender, age, and race/ethnicity using Census population estimates. Given that available Census data did not report on gender, for this analysis, Census data on sex was used to for weighting of dichotomized gender. One respondent who was inadvertently invited to and completed a September-2020 survey after not having participated in May-2020 or June-2020 surveys and two respondents who identified as “Other” gender were not included in this analysis.

Surveys contained demographic questions and assessed public attitudes and behaviours related to the pandemic and its mitigation, along with mental health symptoms. Validated screening instruments and modified questions from instruments were used. Among the mental health screening instruments were the 4-item Patient Health Questionnaire (PHQ),²⁷ with subscales for assessment of anxiety (2-item Generalized Anxiety Disorder [GAD-2]) and depression (2-item PHQ [PHQ-2]) symptoms, and the 2-item Sleep Condition Indicator (SCI-02) for assessment of insomnia symptoms.²⁸

Statistical analysis

We explored whether potential mental health survivorship bias could be explained by: (1) demographic differences in repeated measures respondents (i.e., cross-sectional versus longitudinal respondents differ in their demographics, but mental health is similar among members of a demographic subgroup); or (2) differences within demographic subgroups. Demographic survey weighting could considerably reduce bias in the first, but not second scenario.

Potential demographic differences in survey retention were assessed using chi-square tests for differences between the percentages of respondents who completed one, two, three, or four surveys by gender, age group in years, combined race/ethnicity, education attainment, and 2019 household income. Potential differences in initial mental health were assessed using weighted Poisson regression models with robust standard error estimators to estimate prevalence ratios (PRs) and 95% confidence intervals (CIs) for April-2020 anxiety symptoms (≥ 3 out of 6 on the GAD-2 subscale of the PHQ-4), depression symptoms (≥ 3 out of 6 on the PHQ-2 subscale of the PHQ-4), and insomnia symptoms (≤ 2 out of 8 on the SCI-02) based on the number of completed surveys, both unadjusted

Uncovering Survivorship Bias in Longitudinal Mental Health Surveys During the COVID-19 Pandemic

and adjusted for gender, age group, race/ethnicity, education attainment, and 2019 household income. Next, to assess for potential differences in population estimates for prevalences of anxiety, depression, and insomnia symptoms in April 2020 using samples with differing retention over time, the April-2020 sample was separated into four groups: respondents who completed one, two, three, or four surveys through September 2020. Each group was separately weighted to improve representativeness of the U.S. population by gender, age, and race/ethnicity. Prevalences of anxiety, depression, and insomnia symptoms were estimated based on these demographically representative groups. Chi-square tests were used to assess for different point-estimates for prevalence of April-2020 anxiety, depression, and insomnia symptoms between groups.

To evaluate potential differences in trajectories of adverse mental health symptoms over time by number of completed surveys, prevalences of symptoms of anxiety, depression, and insomnia over two timepoints (April-2020 to May-2020 and April-2020 to June-2020) among respondents who completed all four surveys were compared with those who completed two total surveys (only April-2020 and May-2020 or only April-2020 and June-2020). Respondents who participated in all four surveys completed three of three follow-up surveys (100% retention rate), whereas respondents who participated in two surveys only completed one of three follow-up surveys (33% retention rate). Chi-square tests were used to assess for differences in initial (April-2020) prevalence between samples, and for differences over time (April-2020 *versus* May-2020) within each sample. Prevalence ratios were used to estimate differences in prevalences between subsamples over time.

Finally, to assess whether changes in mental health symptoms were associated with differential participation in follow-up surveys, weighted ordinal logistic regressions were used to estimate odds ratios for lower participation in June-2020 and September-2020 surveys among respondents who completed April-2020 and May-2020 surveys based on symptoms of anxiety, depression, or insomnia reported in these two initial surveys. For each of these adverse mental health conditions over April-2020 and May-2020, respondents were categorized as having no symptoms at either timepoint, symptoms at both timepoints, incident symptoms in May-2020 after not having experienced symptoms in April-2020, or remitted symptoms in May-2020 after having experienced symptoms in April-2020. Odds ratios for lower participation in follow-up surveys were estimated with the dependent variables ordered as 0 (completed both follow-up surveys), 1 (completed one follow-up survey [either June-2020 or

Uncovering Survivorship Bias in Longitudinal Mental Health Surveys During the COVID-19 Pandemic

September-2020]), and 2 (completed neither follow-up survey). Odds were estimated both unadjusted and adjusted for gender, age group, race/ethnicity, education attainment, and 2019 household income.

Study approval and informed consent

The Monash University Human Research Ethics Committee approved the study protocol. Participants provided electronic informed consent. Rounded weighted values are reported unless otherwise specified. Analyses were conducted in R (version 4.0.2; The R Foundation)²⁹ with the R survey package (version 3.29)³⁰⁻³² and Python (version 3.7.8).³³

Results

Overall, 4,042 of 6,548 (61.7%) eligible invited adults completed surveys during the first wave of The COVID-19 Outbreak Public Evaluation (COPE) Initiative, administered during April 2-8, 2020. Of 4,039 (99.9%) who were included in this analysis, 2,098 (52.0%) completed May-2020 surveys, 1,619 (40.0%) completed June-2020 surveys, and 1,151 (28.5%) completed September-2020 surveys. In total, 1,712 (42.4%) completed one survey, 725 (17.9%) completed two surveys, 663 (16.4%) completed three surveys, and 939 (23.2%) completed all four surveys (Table). By age, 76.0% of respondents aged 18-24 years completed one survey, whereas 7.3% completed three or four surveys. In contrast, just 12.1% of respondents aged ≥ 65 years completed one survey, compared with 72.5% who completed three of four surveys ($P < 2.20 \times 10^{-16}$). By race/ethnicity, non-Hispanic White and non-Hispanic Asian respondents had the lowest prevalences of one-survey respondents (33.4% and 32.3%, respectively) and highest prevalences of four-survey respondents (29.7% and 23.9%), whereas non-Hispanic Black and Latinx respondents had the highest prevalences of one-survey respondents (65.7% and 60.7%, respectively) and lowest prevalences of four-survey respondents (8.6% and 10.1%); $P < 2.20 \times 10^{-16}$. Percentage of completed surveys also increased with higher education attainment (e.g., one-survey, high school diploma or less: 52.9%, after bachelor's degree: 33.1%, $P < 2.20 \times 10^{-16}$) and higher 2019 household income (e.g., one-survey, USD <25,000: 51.0%, $\geq 100,000$: 37.0%, $P = 1.68 \times 10^{-9}$).

Compared with respondents who completed all four surveys, those who completed only one or two surveys had higher prevalences of anxiety and depression symptoms in April-2020 surveys (Figure 1). Differences remained after adjusting for gender, age, race/ethnicity, education attainment, and 2019 household income among respondents

Uncovering Survivorship Bias in Longitudinal Mental Health Surveys During the COVID-19 Pandemic

(e.g., one-survey *versus* four-survey, anxiety symptoms, aPR: 1.30, 95% CI: 1.08-1.55, $P=0.0045$; depression symptoms, 1.43, 1.17-1.75, $P=0.00052$). Adjusted prevalence of insomnia symptoms in April-2020 was higher among individuals who completed only one survey compared with those who completed all four surveys (aPR: 1.33, 95% CI: 1.09-1.62, $P=0.0045$). Prevalence estimates for April-2020 adverse mental health symptoms among groups of respondents who completed one, two, three, or four surveys—each separately weighted to improve group representativeness of the U.S. population by gender, age, and race/ethnicity—revealed that estimates for anxiety and depression symptoms based on respondents who completed only one or two surveys were higher than those for respondents who completed three or four surveys (e.g., one-survey *versus* four-survey, anxiety symptoms: 25.5% *versus* 19.8%, $P=2.50\times 10^{-5}$; depression symptoms: 24.1% *versus* 15.6%, $P=1.91\times 10^{-10}$) (Figure 2). Prevalence estimates for these symptoms were similar between one- and two-survey respondents, and between three- and four-survey respondents. Estimates for insomnia symptoms were greater among respondents who completed one survey compared with those who completed multiple surveys (e.g., one-survey *versus* two-survey: 19.9% *versus* 16.1%, $P=0.0097$), but not among any respondents' groups who completed multiple surveys.

In the comparison of adverse mental health symptom prevalences among respondents who completed only two surveys versus those who completed all four surveys (n: 939), both two-survey groups (April-2020 and May-2020 only [April-and-May; n: 584], April-2020 and June-2020 only [April-and-June; n: 141]) started with higher April-2020 prevalences of anxiety and depression symptoms (April-and-May, anxiety symptoms PR: 1.57, depression symptoms PR: 1.66; April-and-June: 1.91 and 2.02, respectively), and the prevalence ratios increased for the second completed surveys (April-and-May: 2.15 and 1.99, respectively; April-and-June: 2.55 and 2.33, respectively) (Figure 3). The prevalence of anxiety symptoms among April-and-May and April-and-June two-survey respondents was similar between surveys (April-and-May: 25.8% and 28.6%, respectively, $P=0.19$; April-and-June: 31.3% and 33.9%, respectively, $P=0.57$), whereas the prevalence of anxiety symptoms in four-survey respondents decreased over these intervals (April-and-May: 16.4% and 13.3%, $P=0.012$; April-and-June: 16.4% and 11.1%, $P=1.11\times 10^{-5}$). The prevalence of depression symptoms increased among April-and-May two-survey respondents (21.4% and 27.5%, respectively, $P=0.0017$), but not among four-survey respondents (12.9% and 13.8%, $P=0.45$).

Analysis of respondents who completed April-2020 and May-2020 surveys revealed that, compared with individuals who did not experience anxiety or depression symptoms during these initial surveys, those who

Uncovering Survivorship Bias in Longitudinal Mental Health Surveys During the COVID-19 Pandemic

experienced incident anxiety or depression symptoms had increased odds of lower participation in future follow-up surveys (i.e., June-2020 and September-2020) (Figure 4). Individuals who experienced anxiety symptoms and depression symptoms in May-2020 after not having done so in April-2020 had 1.68-times (1.49-2.48, $P=0.0015$) and 1.56-times (1.15-2.12, $P=0.0046$) increased odds, respectively, of lower participation in June-2020 and September-2020 surveys. Odds of follow-up survey participation was similar by insomnia symptoms, or among those who experienced (1) remission of anxiety or depression symptoms or (2) persistent anxiety or depression symptoms compared with those who did not experience these symptoms in April-2020 or May-2020.

Discussion

Analysis of mental health among survey respondents based on their participation in follow-up surveys revealed considerable survivorship bias related to: (1) demographic differences in survey retention; (2) differences in initial mental health, adjusted for gender, age, race/ethnicity, education, and income; and (3) higher odds of lower participation in follow-up surveys among respondents who experienced worsened mental health over time. The first of these forms of survivorship bias can be reduced by the application of poststratification weights. The second of these forms of survivorship bias precludes use of a longitudinal sample alone to estimate population prevalences of adverse mental health symptoms. However, simultaneous collection of cross-sectional data from representative samples of independent participants could inform strategies to mitigate differences in initial prevalences of adverse mental health symptoms, which could include adjustment for baseline differences in mental health between cross-sectional versus longitudinal respondents. The third of these forms of survivorship bias is most challenging to account for given the unknown trajectories of respondents who do not consistently participate in follow-up surveys. Recognition that individuals who experienced incident anxiety or depression symptoms had higher odds of not completing follow-up surveys reveals the hazard of overlooking this form of survivorship bias and should temper conclusions about trends of anxiety and depression symptoms in longitudinal mental health survey respondents, especially as generalizing from repeated survey administration among longitudinal respondents without addressing these biases could lead to potentially erroneous conclusions (e.g., that adverse mental health symptom prevalences in a population are improving over time).

Understanding strengths and limitations of study approaches should inform the design and interpretation of findings.³⁴ Longitudinal studies have advantages, including increased power to detect causal pathways and

Uncovering Survivorship Bias in Longitudinal Mental Health Surveys During the COVID-19 Pandemic

mediating factors, reduced reliance on recall bias, and establishment of the order in which events and outcomes occur. However, survivorship bias in longitudinal mental health surveys suggest that longitudinal samples may be non-representative of population-level mental health. While unable to determine causation, cross-sectional studies can more rapidly generate data, and our data provide further evidence that cross-sectional data may be more reliable for the assessment of population-level prevalences of adverse mental health symptoms at a given timepoint.³⁵ For future study designs, researchers could consider implementing a planned missing data design³⁶ to benefit from the strengths of these study designs while minimizing associated biases.

Strengths of this analysis include four timepoints to assess response bias, high initial response (61.7%) and retention (39.6% of respondents completed three of four surveys) rates, utilization of clinically validated screening instruments, and implementation of quota sampling and survey weighting to improve sample representativeness by national estimates for gender, age, and race/ethnicity. Moreover, multiple types of survivorship bias were assessed, including differential demographic attrition and demographic-adjusted assessment of both initial mental health as well as odds of participation in follow-up surveys based on changes to mental health over the initial two surveys. Finally, bias was assessed both cross-sectionally and longitudinally. The findings in this report are also subject to limitations. First, while this analysis focused on survivorship bias, these data may be subject to other biases, including recall and response biases^{37,38}; however, quota sampling and survey weighting were employed to reduce demographic-related response bias. Second, though strategies were used to improve sample representativeness, and this Internet-based survey sample should represent the adult U.S. population by gender, age, and race/ethnicity, it may not fully represent all U.S. adults, especially with regards to Internet access. Third, April-2020 respondents who did not respond to invitations to complete surveys in either May-2020 or June-2020 were not invited to complete September-2020 surveys, so these respondents did not have the opportunity to complete September-2020 surveys. However, after having declined two successive invitations, it is unlikely that a substantial number of these respondents would have completed September-2020 surveys. Finally, a portion of the sample oversampled from the New York City and Los Angeles metropolitan areas. However, all 50 states and Washington D.C. were represented, and this analysis was not designed to produce national population estimates for adverse mental health symptoms.

Longitudinal survey-based assessment of mental health is a useful and widely used research method that can provide important insights gained from monitoring the same participants over time. However, our data demonstrate

Uncovering Survivorship Bias in Longitudinal Mental Health Surveys During the COVID-19 Pandemic

that analysing mental health trends among only individuals who consistently respond to longitudinal mental health surveys can lead to overly optimistic interpretations of mental health trends by excluding individuals who less frequently respond to follow-up survey invitations. Survivorship bias assessment should therefore be among bias assessments³⁸⁻⁴¹ applied before conclusions based on repeated assessments from participants in a longitudinal study are generalized. These data have critical implications for the design of future studies and interpretation of data from published papers and ongoing studies with longitudinal study designs, both during and beyond the COVID-19 pandemic.

Additional sections

Ethics approval

The protocol was approved by the Monash University Human Research Ethics Committee (MUHREC) (ref. no. 24036). This activity was also reviewed by the U.S. Centers for Disease Control and Prevention (C.D.C.) and was conducted consistent with applicable federal law and C.D.C. policy: 45 C.F.R. part 46, 21 C.F.R. part 56; 42 U.S.C. Sect. 241(d); 5 U.S.C. Sect. 552a; 44 U.S.C. Sect. 3501 et seq.

Funding

The present work was supported in part by institutional grants to Monash University from the United States Centers for Disease Control and Prevention Foundation with funding from BNY Mellon, and from WHOOP, Inc., and by institutional support from Philips Respironics and Alexandra Drane to Brigham & Women's Hospital, the Turner Institute for Brain and Mental Health, Monash University, and the Institute for Breathing and Sleep, Austin Hospital. M.É.C. gratefully acknowledges support from a 2020-2021 Fulbright Fellowship sponsored by The Kinghorn Foundation.

Availability of data and materials

All relevant data supporting the findings in this study are available from the corresponding author upon reasonable request.

Acknowledgements

We thank all survey respondents, along with Laura K. Barger, Ph.D. (Brigham & Women's Hospital, Harvard

Uncovering Survivorship Bias in Longitudinal Mental Health Surveys During the COVID-19 Pandemic

Medical School), Rebecca Robbins, Ph.D. (Brigham & Women's Hospital, Harvard Medical School), Elise R. Facer-Childs, Ph.D. (Monash University), and Matthew D. Weaver, Ph.D. (Brigham & Women's Hospital, Harvard Medical School) for their contributions to the initial survey instrument for The COPE Initiative.

Author contributions

M.É.C., C.A.C., S.M.W.R., and M.E.H. designed the study. M.É.C. and J.F.W. conceived the manuscript. M.É.C. worked with Qualtrics, LLC research services to administer the survey, and analysed the data with guidance from J.F.W. M.É.C. created the table and all figures. M.É.C. wrote the first paper draft. All authors provided critical input and revisions to the paper. S.M.W.R. and M.E.H. supervised.

Conflict of interest statement

All authors report institutional grants to Monash University from the CDC Foundation, with funding from BNY Mellon, and from WHOOP, Inc. MC reported grants from the Fulbright Foundation sponsored by The Kinghorn Foundation and personal fees from Vanda Pharmaceuticals Inc. CC reported receiving personal fees from Teva Pharma Australia, Inselspital Bern, the Institute of Digital Media and Child Development, the Klarman Family Foundation, Tencent Holdings Ltd, the Sleep Research Society Foundation, and Physician's Seal; receiving grants to Brigham and Women's Hospital from the Federal Aviation Administration, the National Health Lung and Blood Institute U01-HL-111478, the National Institute on Aging P01-AG09975, the National Aeronautics and Space Administration, and the National Institute of Occupational Safety and Health R01-OH-011773; receiving personal fees from and equity interest in Vanda Pharmaceuticals Inc.; educational and research support from Jazz Pharmaceuticals Plc, Philips Respironics Inc., Regeneron Pharmaceuticals, and Sanofi S.A.; an endowed professorship provided to Harvard Medical School from Cephalon, Inc.; an institutional gift from Alexandra Drane; and a patent on Actiwatch-2 and Actiwatch-Spectrum devices, with royalties paid from Philips Respironics, Inc. CC's interests were reviewed and managed by Brigham and Women's Hospital and Mass General Brigham in accordance with their conflict of interest policies. CC also served as a voluntary board member for the Institute for Experimental Psychiatry Research Foundation and a voluntary consensus panel chair for the National Sleep Foundation. SR reported receiving grants and personal fees from Cooperative Research Centre for Alertness, Safety and Productivity, receiving grants and institutional consultancy fees from Teva Pharma Australia, and institutional consultancy fees from Vanda Pharmaceuticals, Circadian Therapeutics, BHP Billiton, and Herbert Smith Freehills.

Uncovering Survivorship Bias in Longitudinal Mental Health Surveys During the COVID-19 Pandemic

No other disclosures were reported.

Disclaimer

This manuscript reflects the views of the authors and does not necessarily represent the official position of the Centers for Disease Control and Prevention.

Uncovering Survivorship Bias in Longitudinal Mental Health Surveys During the COVID-19 Pandemic

1. Pierce M, Hope H, Ford T, et al. Mental health before and during the COVID-19 pandemic: a longitudinal probability sample survey of the UK population. *Lancet Psychiatry* 2020; 7(10): 883-92.
2. Czeisler MÉ, Lane RI, Petrosky E, et al. Mental Health, Substance Use, and Suicidal Ideation During the COVID-19 Pandemic - United States, June 24-30, 2020. *MMWR Morb Mortal Wkly Rep* 2020; 69(32): 1049-57.
3. Ettman CK, Abdalla SM, Cohen GH, Sampson L, Vivier PM, Galea S. Prevalence of Depression Symptoms in US Adults Before and During the COVID-19 Pandemic. *JAMA Netw Open*. 2020 Sep 1;3(9):e2019686.
4. CDC, National Center for Health Statistics. Early release of selected mental health estimates based on data from the January–June 2019 National Health Interview Survey. Atlanta, GA: US Department of Health and Human Services, CDC, National Center for Health Statistics; 2020. <https://www.cdc.gov/nchs/data/nhis/earlyrelease/ERmentalhealth-508.pdf> (December 2020, date last accessed).
5. Wang C, Pan R, Wan X, et al. Immediate Psychological Responses and Associated Factors during the Initial Stage of the 2019 Coronavirus Disease (COVID-19) Epidemic among the General Population in China. *Int J Environ Res Public Health*. 2020;17(5). pii: E1729.
6. Li S, Wang Y, Xue J, Zhao N, Zhu T. The Impact of COVID-19 Epidemic Declaration on Psychological Consequences: A Study on Active Weibo Users. *Int J Environ Res Public Health*. 2020;17(6):2032.
7. Bonati M, Campi R, Zanetti M, et al. Psychological distress among Italians during the 2019 coronavirus disease (COVID-19) quarantine. *BMC Psychiatry*. 2021;21(1):20.
8. Browning MHEM, Larson LR, Sharaievska I, et al. Psychological impacts from COVID-19 among university students: Risk factors across seven states in the United States. *PLoS One*. 2021;16(1):e0245327.
9. Vindegaard N, Benros ME. COVID-19 pandemic and mental health consequences: Systematic review of the current evidence. *Brain Behav Immun*. 2020;89:531-542.

Uncovering Survivorship Bias in Longitudinal Mental Health Surveys During the COVID-19 Pandemic

10. Fancourt D, Steptoe A, Bu F. Trajectories of anxiety and depressive symptoms during enforced isolation due to COVID-19 in England: a longitudinal observational study. *Lancet Psychiatry*. 2021;8(2):141-149.
11. Czeisler MÉ, Lane RI, Wiley JF, Czeisler CA, Howard ME, Rajaratnam SMW. Follow-up Survey of US Adult Reports of Mental Health, Substance Use, and Suicidal Ideation During the COVID-19 Pandemic, September 2020. *JAMA Netw Open* (in press) 2021.
12. CDC, National Center for Health Statistics. Indicators of anxiety or depression based on reported frequency of symptoms during the last 7 days. Household Pulse Survey. Atlanta, GA: US Department of Health and Human Services, CDC, National Center for Health Statistics; 2020.
<https://www.cdc.gov/nchs/covid19/pulse/mental-health.htm> (December 2020, date last accessed).
13. Holmes EA, O'Connor RC, Perry VH, et al. Multidisciplinary research priorities for the COVID-19 pandemic: a call for action for mental health science. *Lancet Psychiatry*. 2020;7(6):547-560.
14. Corry NH, Williams CS, Battaglia M, et al. Assessing and adjusting for non-response in the Millennium Cohort Family Study. *BMC Med Res Methodol*. 2017;17(1):16.
15. Mayeda ER, Filshtein TJ, Tripodis Y, Glymour MM, Gross AL. Does selective survival before study enrolment attenuate estimated effects of education on rate of cognitive decline in older adults? A simulation approach for quantifying survival bias in life course epidemiology. *Int J Epidemiol*. 2018;47(5):1507-1517.
16. Cornish RP, Macleod J, Boyd A, Tilling K. Factors associated with participation over time in the Avon Longitudinal Study of Parents and Children: a study using linked education and primary care data. *Int J Epidemiol*. 2020:dyaal92.
17. Lamers F, Hoogendoorn AW, Smit JH, et al. Sociodemographic and psychiatric determinants of attrition in the Netherlands Study of Depression and Anxiety (NESDA). *Compr Psychiatry*. 2012;53(1):63-70.
18. de Graaf R, van Dorsselaer S, Tuithof M, ten Have M. Sociodemographic and psychiatric predictors of attrition in a prospective psychiatric epidemiological study among the general population. Result of the Netherlands Mental Health Survey and Incidence Study-2. *Compr Psychiatry*. 2013;54(8):1131-9.

Uncovering Survivorship Bias in Longitudinal Mental Health Surveys During the COVID-19 Pandemic

19. Ramsey I, de Rooij BH, Mols F, et al. Cancer survivors who fully participate in the PROFILES registry have better health-related quality of life than those who drop out. *J Cancer Surviv*. 2019;13(6):829-839.
20. Kigawa M, Tsuchida A, Matsumura K, et al. Japan Environment and Children's Study (JECS) Group. Factors of non-responsive or lost-to-follow-up Japanese mothers during the first year post partum following the Japan Environment and Children's Study: a longitudinal cohort study. *BMJ Open*. 2019; 9(11):e031222.
21. Neuner B, Fleming M, Born R, et al. Predictors of loss to follow-up in young patients with minor trauma after screening and written intervention for alcohol in an urban emergency department. *J Stud Alcohol Drugs*. 2007;68(1):133-40.
22. Kakudate N, Morita M, Yamazaki S, et al. Association between self-efficacy and loss to follow-up in long-term periodontal treatment. *J Clin Periodontol*. 2010;37(3):276-82.
23. Herbert CP, Grams GD, Berkowitz J. Sexual assault tracking study: who gets lost to follow-up? *CMAJ*. 1992;147(8):1177-84.
24. The COVID-19 Outbreak Public Evaluation Initiative. 2020-2021. www.thecopeinitiative.org (February 2021, date last accessed).
25. Qualtrics. April 2020 ed. Provo, Utah, USA. First release: 2005.
26. Czeisler MÉ, Howard ME, Robbins R, et al. COVID-19: Public Compliance with and Public Support for Stay-at-Home Mitigation Strategies. *medRxiv*, published online April 2020, preprint: not peer reviewed.
27. Löwe B, Wahl I, Rose M, et al. A 4-item measure of depression and anxiety: validation and standardization of the Patient Health Questionnaire-4 (PHQ-4) in the general population. *J Affect Disord*. 2010;122(1-2):86-95.
28. Espie CA, Kyle SD, Hames P, et al. The Sleep Condition Indicator: a clinical screening tool to evaluate insomnia disorder. *BMJ Open*. 2014;4(3):e004183.
29. R Core Team. R: A language and environment for statistical computing. R Foundation for Statistical Computing, Vienna, Austria. 2020. <https://www.R-project.org/>.

Uncovering Survivorship Bias in Longitudinal Mental Health Surveys During the COVID-19 Pandemic

30. Lumley T. "Analysis of Complex Survey Samples." *Journal of Statistical Software*, 9(1), 1-19. R package version 2.2; 2004.
31. Lumley T. *Complex Surveys: A Guide to Analysis Using R*. John Wiley and Sons; 2010.
32. Lumley T. "survey: analysis of complex survey samples." R package version 4.0; 2020.
33. Van Rossum G, Drake FL. *Python 3 Reference Manual*. Scotts Valley, CA: CreateSpace; 2009.
34. Pierce M, McManus S, Jessop C, et al. Says who? The significance of sampling in mental health surveys during COVID-19. *Lancet Psychiatry*. 2020;7(7): 567-8.
35. Sedgwick, P. Cross sectional studies: advantages and disadvantages. *BMJ*. 2014;348:g2276.
36. Rioux C, Lewin A, Odejimi OA, Little TD. Reflection on modern methods: planned missing data designs for epidemiological research. *Int J Epidemiol*. 2020;49(5):1702-1711.
37. Adams MJ, Hill WD, Howard DM, et al. Factors associated with sharing e-mail information and mental health survey participation in large population cohorts. *Int J Epidemiol*. 2020;49(2):410-421.
38. Infante-Rivard C, Cusson A. Reflection on modern methods: selection bias-a review of recent developments. *Int J Epidemiol*. 2018;47(5):1714-1722.
39. Mayeda ER, Tchetgen Tchetgen EJ, Power MC, et al. A Simulation Platform for Quantifying Survival Bias: An Application to Research on Determinants of Cognitive Decline. *Am J Epidemiol*. 2016;184(5):378-87.
40. Griffith GJ, Morris TT, Tudball MJ, et al. Collider bias undermines our understanding of COVID-19 disease risk and severity. *Nat Commun*. 2020;11(1):5749.
41. Sanderson S, Tatt ID, Higgins JP. Tools for assessing quality and susceptibility to bias in observational studies in epidemiology: a systematic review and annotated bibliography. *Int J Epidemiol*. 2007;36(3):666-76.

Uncovering Survivorship Bias in Longitudinal Mental Health Surveys During the COVID-19 Pandemic

Table and Figures

Table. Respondent characteristics, overall and by number of completed surveys

Figure 1. Adjusted prevalence ratios of anxiety, depression, and insomnia symptoms in April 2020 by number of completed surveys

Figure 2. Estimated prevalences of symptoms of anxiety, depression, and insomnia in April 2020 based on total number of completed surveys, with each group weighted to population estimates for gender, age, and race/ethnicity

Figure 3. Longitudinal comparisons of anxiety and depression symptom prevalences by number of repeated measures

Figure 4. Odds of lower participation in follow-up surveys based on mental health in earlier surveys

Uncovering Survivorship Bias in Longitudinal Mental Health Surveys During the COVID-19 Pandemic

Table. Respondent characteristics, overall and by number of completed surveys

	Number of respondents				Number of completed surveys				Chi-Sq P				
	Unweighted		Weighted		One		Two			Three		Four	
	n	(%)	n	(%)	n	(%)	n	(%)	n	(%)	n	(%)	
Total	4039	(100)	4039	(100)	1712	(42.4)	725	(17.9)	663	(16.4)	939	(23.2)	-
Gender													
Male	1814	(44.9)	1986	(49.2)	872	(43.9)	329	(16.6)	307	(15.5)	477	(24.0)	0.032
Female	2225	(55.1)	2053	(50.8)	840	(40.9)	395	(19.2)	356	(17.3)	462	(22.5)	
Age group in years													
18-24	456	(11.3)	528	(13.1)	401	(76.0)	88	(16.7)	22	(4.2)	17	(3.1)	<2.20×10 ^{-16*}
25-44	1335	(33.1)	1414	(35.0)	809	(57.2)	269	(19.0)	182	(12.8)	155	(11.0)	
45-64	1420	(35.2)	1403	(34.7)	418	(29.8)	261	(18.6)	291	(20.8)	433	(30.8)	
≥65	828	(20.5)	693	(17.2)	84	(12.1)	107	(15.4)	168	(24.2)	335	(48.3)	
Race/ethnicity													
White, non-Hispanic	2937	(72.7)	2575	(63.7)	860	(33.4)	459	(17.8)	491	(19.1)	765	(29.7)	<2.20×10 ^{-16*}
Black, non-Hispanic	329	(8.1)	493	(12.2)	324	(65.7)	72	(14.6)	55	(11.1)	43	(8.6)	
Asian, non-Hispanic	224	(5.5)	189	(4.7)	61	(32.3)	45	(24.0)	37	(19.8)	45	(23.9)	
Other, non-Hispanic	126	(3.1)	122	(3.0)	66	(54.4)	22	(18.5)	13	(11.0)	20	(16.1)	
Latinx	423	(10.5)	660	(16.3)	401	(60.7)	126	(19.0)	67	(10.1)	67	(10.1)	
Education attainment													
≤ High school diploma	735	(18.2)	777	(19.2)	411	(52.9)	137	(17.7)	86	(11.0)	143	(18.4)	<2.20×10 ^{-16*}
College or some college	2484	(61.5)	2473	(61.2)	1023	(41.4)	445	(18.0)	426	(17.2)	579	(23.4)	
> Bachelor's degree	792	(19.6)	756	(18.7)	250	(33.1)	142	(18.8)	150	(19.8)	215	(28.4)	
Unknown	28	(0.7)	34	(0.8)	28	(83.9)	1	(2.7)	2	(5.4)	3	(8.0)	
2019 Household income (USD)													
<25,000	578	(14.3)	607	(15.0)	309	(51.0)	111	(18.3)	86	(14.1)	101	(16.7)	1.68×10 ^{-9*}
25,000-49,999	816	(20.2)	834	(20.6)	395	(47.4)	155	(18.5)	112	(13.5)	172	(20.6)	
50,000-99,999	1291	(32.0)	1271	(31.5)	489	(38.5)	227	(17.9)	235	(18.5)	320	(25.1)	
≥100,000	1156	(28.6)	1125	(27.9)	416	(37.0)	202	(17.9)	203	(18.0)	305	(27.1)	
Unknown	198	(4.9)	202	(5.0)	103	(51.0)	31	(15.1)	27	(13.3)	42	(20.6)	

USD = United States Dollars

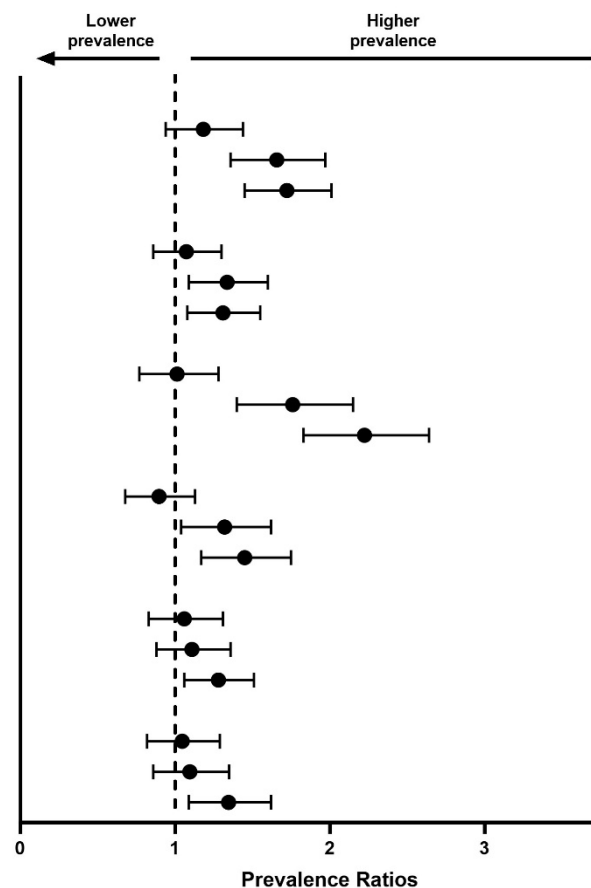
* $P < 0.025$.

The "Other, non-Hispanic," category includes respondents who identified as not Hispanic or Latino and as more than one race or as American Indian or Alaska Native, Native Hawaiian or Pacific Islander, or Other.

Uncovering Survivorship Bias in Longitudinal Mental Health Surveys During the COVID-19 Pandemic

Figure 1. Adjusted prevalence ratios of anxiety, depression, and insomnia symptoms in April 2020 by number of completed surveys

Measure	Number of completed surveys	Prevalence ratios and 95% Confidence Intervals	
Anxiety symptoms	Reference: Four	PR (95% CI)	P
	Three	1.17 (0.94, 1.44)	0.15
	Two	1.64 (1.36, 1.97)*	2.78×10 ⁻⁷
	One	1.71 (1.45, 2.01)*	1.32×10 ⁻¹⁰
	Reference: Four	aPR (95% CI)	P
	Three	1.06 (0.86, 1.30)	0.61
	Two	1.32 (1.09, 1.60)*	0.0041
Depression symptoms	Reference: Four	PR (95% CI)	P
	Three	0.99 (0.77, 1.28)	0.95
	Two	1.73 (1.40, 2.15)*	5.86×10 ⁻⁷
	One	2.20 (1.83, 2.64)*	<2.20×10 ⁻¹⁶
	Reference: Four	aPR (95% CI)	P
	Three	0.88 (0.68, 1.13)	0.30
	Two	1.30 (1.04, 1.62)*	0.012
Insomnia symptoms	Reference: Four	PR (95% CI)	P
	Three	1.04 (0.83, 1.31)	0.73
	Two	1.09 (0.88, 1.36)	0.42
	One	1.27 (1.06, 1.51)*	0.0097
	Reference: Four	aPR (95% CI)	P
	Three	1.03 (0.82, 1.29)	0.83
	Two	1.08 (0.86, 1.35)	0.51
One	1.33 (1.09, 1.62)*	0.0045	



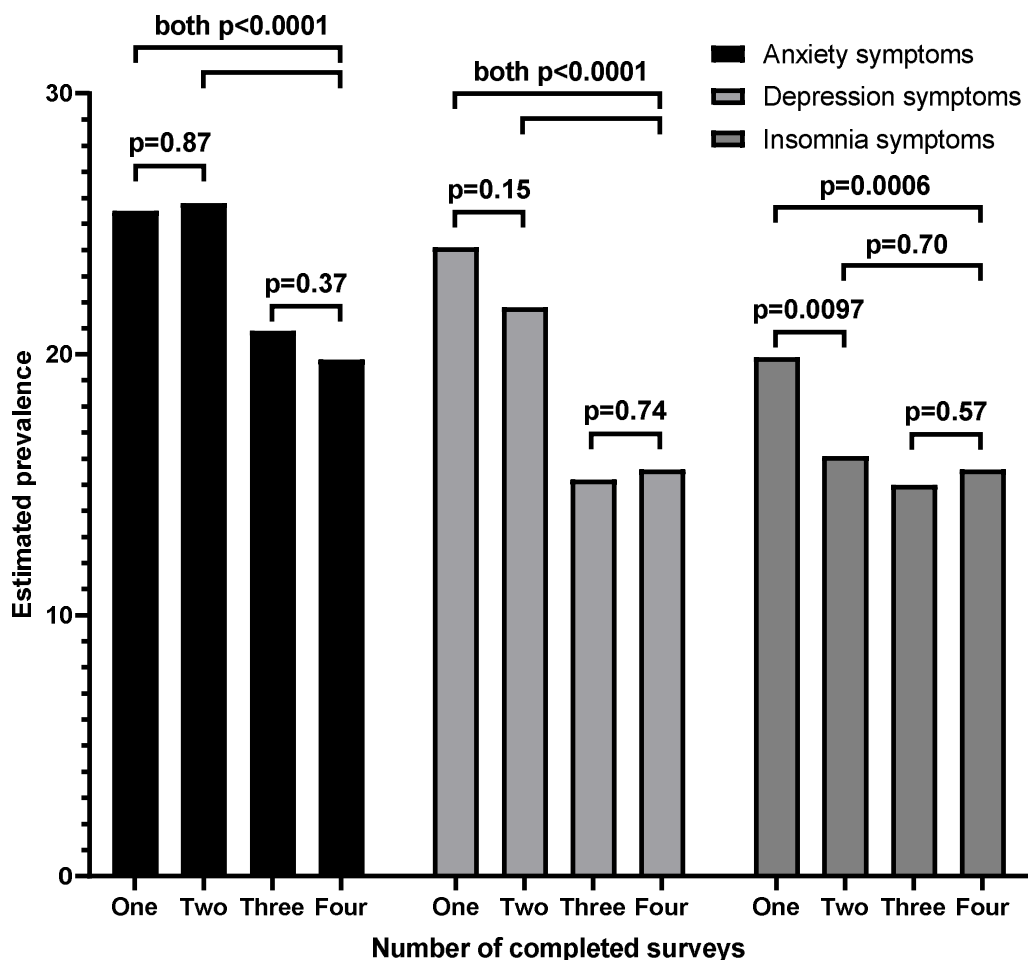
* $P < 0.025$.

Legend: Adjusted odds ratio estimates for lower participation in follow-up surveys were adjusted for gender, age group, race/ethnicity, education attainment, and 2019 household income.

Interpretation: Prevalence above one indicates that adjusting for specified demographic factors, compared with respondents who would eventually complete all four surveys, respondents in a given group (i.e., who completed one, two, or three total surveys) more commonly reported adverse mental health symptoms in the first survey (April 2020), which all respondents completed.

Uncovering Survivorship Bias in Longitudinal Mental Health Surveys During the COVID-19 Pandemic

Figure 2. Estimated prevalences of symptoms of anxiety, depression, and insomnia in April 2020 based on total number of completed surveys, with each group weighted to population estimates for gender, age, and race/ethnicity

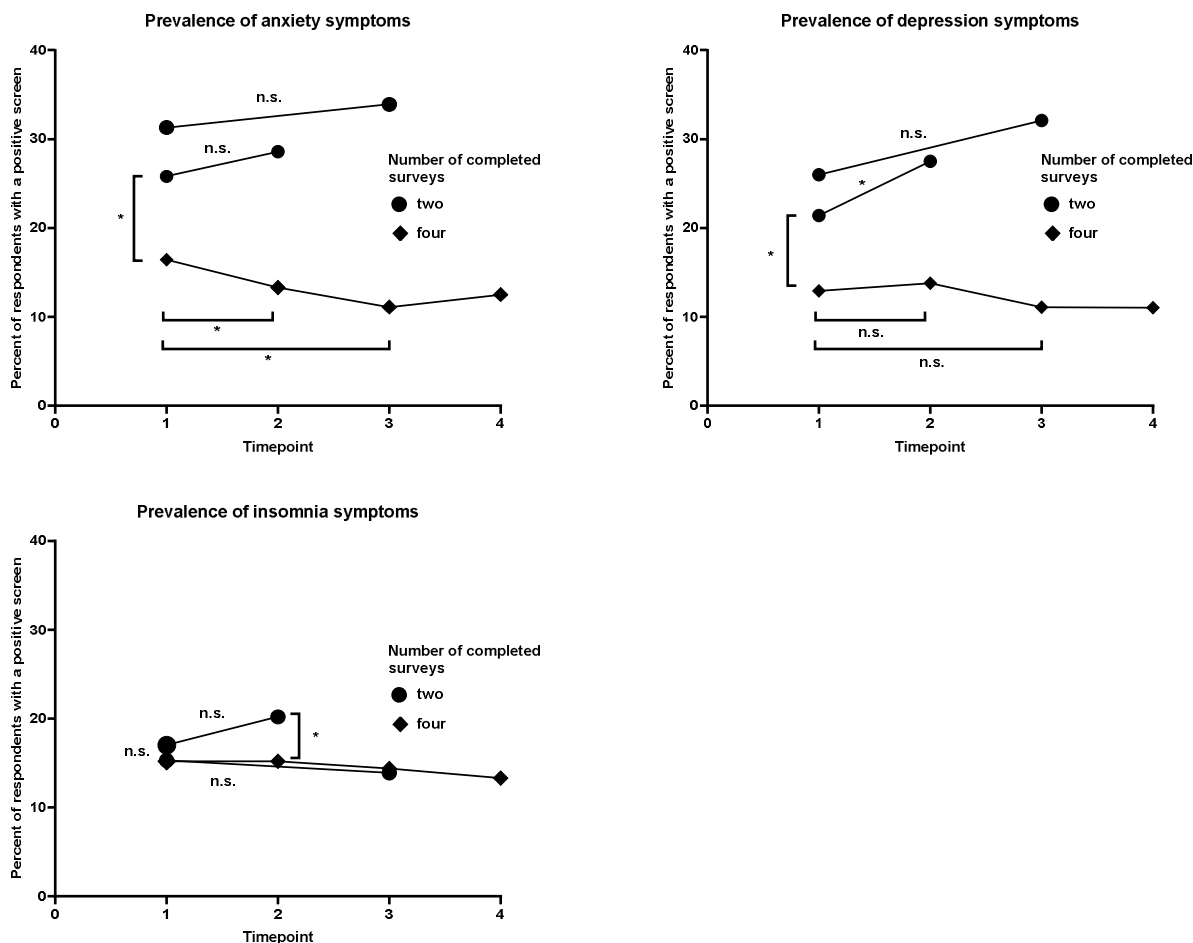


Number of completed surveys	Number of respondents		Anxiety symptoms		Depression symptoms		Insomnia symptoms	
	n	(%)	n	(%)	n	(%)	n	(%)
Total	4039	(100)	942	(23.3)	807	(20.0)	698	(17.3)
One	1587	(39.3)	405	(25.5)	382	(24.1)	316	(19.9)
Two	731	(18.1)	189	(25.8)	159	(21.8)	118	(16.1)
Three	700	(17.3)	146	(20.9)	106	(15.2)	105	(15.0)
Four	1021	(25.3)	202	(19.8)	159	(15.6)	160	(15.6)
Chi-Square			P		P		P	
One vs Two			0.87		0.15		0.0097*	
One vs Three			0.0050*		3.75×10 ⁻⁸ *		0.0012*	
One vs Four			2.50×10 ⁻⁵ *		1.91×10 ⁻¹⁰ *		0.00064*	
Two vs Three			0.0032*		2.34×10 ⁻⁵ *		0.44	
Two vs Four			1.13×10 ⁻⁵ *		1.43×10 ⁻⁶ *		0.70	
Three vs Four			0.37		0.74		0.57	

* P<0.025.

Uncovering Survivorship Bias in Longitudinal Mental Health Surveys During the COVID-19 Pandemic

Figure 3. Longitudinal comparisons of anxiety and depression symptom prevalences by number of repeated measures



Timepoints: 1 = April 2020; 2 = May 2020; 3 = June 2020; 4 = September 2020

Two-survey respondents completed surveys in April 2020 and EITHER May 2020 only OR June 2020 only

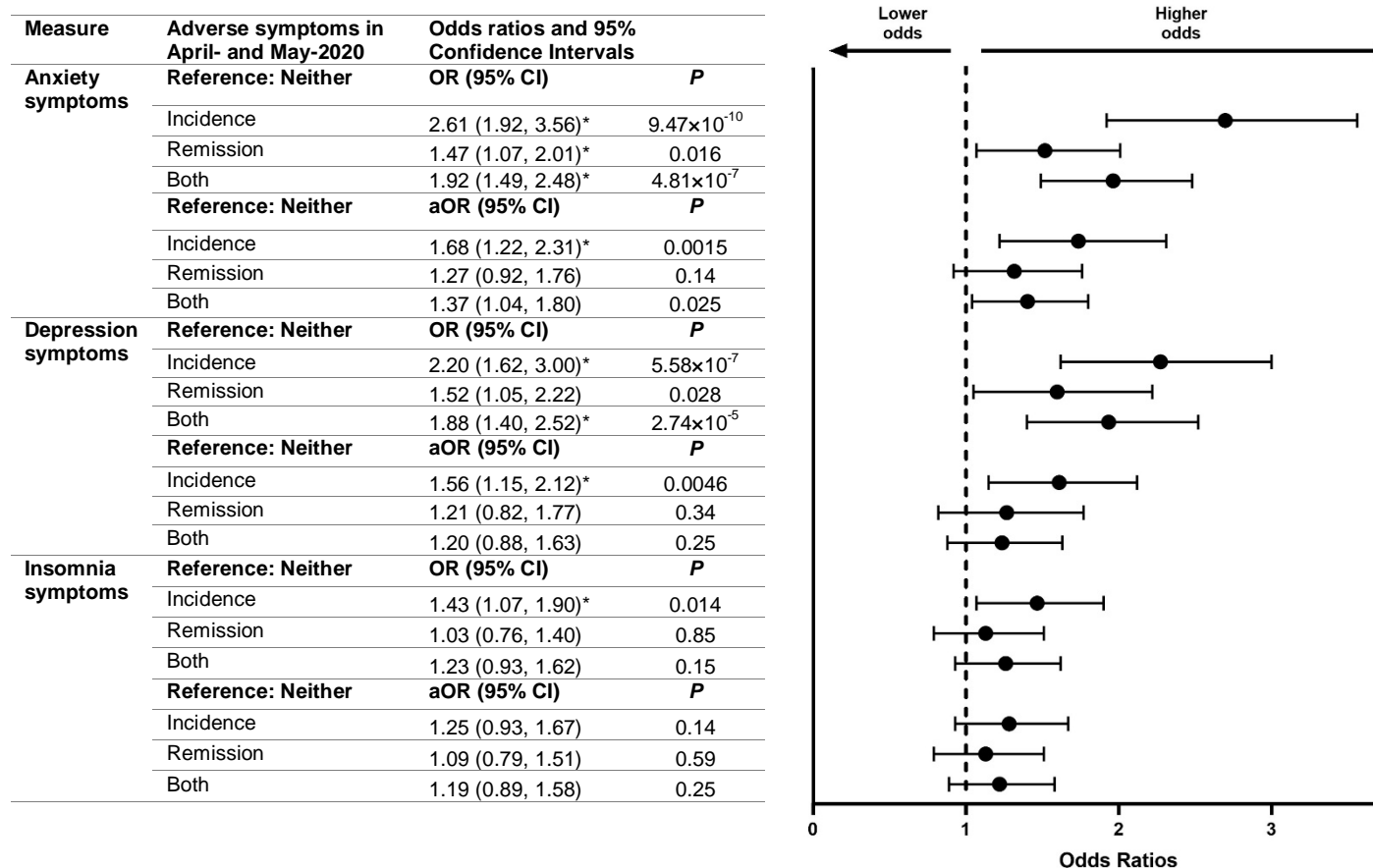
* $P < 0.025$.

n.s. $P \geq 0.025$.

Prevalence	Symptoms of:					
	Anxiety		Depression		Insomnia	
	n	(%)	n	(%)	n	(%)
Four-survey respondents (n = 939)						
April 2020	154	(16.4)	121	(12.9)	143	(15.2)
May 2020	125	(13.3)	130	(13.8)	142	(15.2)
Two-survey respondents (April and May only, n = 584)						
April 2020	151	(25.8)	125	(21.4)	99	(17)
May 2020	167	(28.6)	161	(27.5)	118	(20.2)
Two-survey respondents (April and June only, n = 141)						
April 2020	44	(31.3)	37	(26)	22	(15.3)
June 2020	48	(33.9)	45	(32.1)	20	(13.9)
Prevalence ratios (Two versus Four survey respondents)						
April and May 2020						
April 2020	-	1.57	-	1.66	-	1.12
May 2020	-	2.15	-	1.99	-	1.33
April and June 2020						
April 2020	-	1.91	-	2.02	-	1.01
June 2020	-	2.55	-	2.33	-	0.91

Uncovering Survivorship Bias in Longitudinal Mental Health Surveys During the COVID-19 Pandemic

Figure 4. Odds of lower participation in follow-up surveys based on mental health in earlier surveys



* $P < 0.025$.

Legend: Adjusted odds ratio estimates for lower participation in follow-up surveys were adjusted for gender, age group, race/ethnicity, education attainment, and 2019 household income. Incidence was classified as presence of adverse mental health symptoms in May 2020 after absence of such symptoms in April 2020. Remission was classified as absence of adverse mental health symptoms in May 2020 after presence of such symptoms in April 2020.

Interpretation: Odds above one indicates that adjusting for specified demographic factors, compared with respondents who did not experience adverse mental health symptoms in either April 2020 or May 2020, respondents in a given group (Incidence, Remission, or Both) had higher odds of having completed fewer follow-up surveys for which they received invitations in June 2020 and September 2020.