

1 **Population Pharmacokinetics of Oxcarbazepine: A Systematic Review**

2 Yue-ting Chen ^{1,2#}; Chen-yu Wang ^{1#}; Yi-wei Yin ^{1#}; Zi-ran Li ³; Wei-wei Lin ⁴; Min
3 Zhu ^{1,2}; Zheng Jiao ^{1*}

4 ¹ Department of Pharmacy, Shanghai Chest Hospital, Shanghai Jiao Tong University,
5 Shanghai, China;

6 ²School of Basic Medicine and Clinical Pharmacy, China Pharmaceutical University,
7 Nanjing, China;

8 ³Department of Pharmacy, Huashan Hospital, Fudan University, Shanghai, China;

9 ⁴Department of Pharmacy, The First Affiliated Hospital, Fujian Medical University,
10 Fuzhou, China.

11 Yue-ting Chen, Chen-yu Wang and Yi-wei Yin contributed equally to this work.

12 ***Corresponding author:**

13 Zheng Jiao, Professor

14 Department of Pharmacy, Shanghai Chest Hospital, Shanghai Jiao Tong University

15 241 Huaihai West Road, Shanghai, China, 200030

16 Tel.: +86 (21) 2220 0000 ext 3021

17 E-mail: jiaozhen@online.sh.cn;

18 ORCID: Zheng Jiao: <https://orcid.org/0000-0001-7999-7162>

19

20

21 **Abstract**

22 **Introduction:** Oxcarbazepine is commonly used as a first-line drug in the treatment
23 of partial seizures. Due to the high pharmacokinetic variability of oxcarbazepine,
24 many population pharmacokinetic models have been developed to optimise the
25 dosing regimen of oxcarbazepine.

26 **Areas covered:** This review summarize the published population pharmacokinetic
27 studies of oxcarbazepine in children and adults. The quality of the identified reports
28 from the PubMed and Embase databases was also evaluated. We also explored the
29 significant covariates that may have an impact on the dosage regimen and clinical use
30 of oxcarbazepine.

31 **Expert Opinion:** The oxcarbazepine dose regimen was dependent on weight and
32 co-administration with enzyme-inducing medications. In order to achieve more
33 accurate treatment, we should establish PK / PD model of OXC to evaluate the
34 effectiveness of dose adjustment from pharmacodynamic indicators. Furthermore,
35 exploring the pharmacokinetic in specific patients, such as infants is essential to
36 improve its safety.

37 **Keywords:** Epilepsy; Nonlinear mixed effect modelling; Oxcarbazepine; Population
38 pharmacokinetic;

39 **Article highlights**

- 40 ● In this review, we identified weight, renal function, and co-administered
41 medications as covariates that most likely to influence oxcarbazepine
42 pharmacokinetics.
- 43 ● Comparing to adult patients, paediatric patients show a higher clearance per
44 kilogramme weigh which lead to higher doses per kilogramme; they may also
45 require therapeutic drug monitoring owing to a larger variation in clearance.
- 46 ● Further studies are essential to evaluate oxcarbazepine pharmacokinetics in
47 special populations such as infants.

48 1. Introduction

49 Oxcarbazepine (OXC) is a commonly used anti-epilepsy drug with a chemical
50 structure similar carbamazepine (CBZ) [1]. It was approved by the Food and Drug
51 Administration as a monotherapy and adjunctive therapy for partial seizures in adult
52 and paediatric patients. It prevents seizures mainly through the blockage of
53 voltage-dependent sodium channels, similar to CBZ [2]. Owing to its comparable
54 effectiveness but better safety and tolerability, OXC is usually used as an alternative
55 to CBZ in patients who are unable to tolerate CBZ [3,4].

56 Oxcarbazepine is completely absorbed (>95%) and quickly transformed to its
57 active metabolite 10-hydroxycarbazepine (MHD) by cytosolic enzymes after oral
58 administration [5,6]. Owing to its rapid metabolism, OXC has a much lower area
59 under the concentration-time curve (AUC) than MHD *in vivo* (16.05 vs. 215.52
60 $\mu\text{g}\cdot\text{h}/\text{ml}$) [7]. Thus, the effectiveness of OXC is mainly determined by measuring
61 MHD concentration [8]. Following OXC administration, the concentration of MHD
62 reaches a peak in approximately 2–4 h [9]. MHD has a low protein binding rate
63 (~39%) [10], and its volume of distribution (Vd) is between 0.3 and 0.8 L/kg [6].
64 MHD is excreted unchanged in the urine or eliminated in conjugation with uridine
65 diphosphate-glucuronosyltransferase (UGT), with only a small fraction (4%) being
66 oxidised to its dihydroxy derivative (DHD) [5,11].

67 In special patient populations, such as patients with renal insufficiency, patients
68 who are co-administered OXC with enzyme-inducing antiepileptic drugs (EIAEDs) as
69 well as the elderly and infants, the pharmacokinetics (PK) of MHD varies greatly [12].

70 Rouan et al. [12] reported that the mean $AUC_{0-168\text{ h}}$ of MHD in patients with severe
71 renal impairment was around 2–2.5 times higher than that in healthy subjects after
72 receiving a single oral dose of OXC. A high exposure to OXC is associated with an
73 increased incidence of side effects [13]; therefore, to ensure effectiveness and safety,
74 therapeutic drug monitoring (TDM) is essential for patient-specific dose adjustment
75 [14]. Ideally, individualised doses need to be developed at the beginning of treatment;
76 however, the current TDM approach is usually implemented during the course of the
77 treatment. The population pharmacokinetic (PPK) approach has been used to identify
78 significant covariates that influence PK and is often used in clinical practice through
79 Bayesian forecasting to develop individualised therapy at the beginning and even
80 during the course of treatment [15,16].

81 Despite the reports of PPK study are numerous, no research has been conducted to
82 review the PPK of MHD. Analysing and understanding the significant covariates and
83 their relationship in different patient populations is critical for the development of
84 appropriate regimens for individualised therapy. In this review, we aim to summarise
85 the significant covariates affecting PK, identify unexplored covariates, and provide
86 evidence for the model informed of OXC.

87 **2. Methods**

88 **2.1 Search Strategy**

89 The PubMed and Embase databases were used to systematically search for articles
90 on PPK of OXC published before 31 October 2020 followed the principles of the
91 Preferred Reporting Items for Systematic Reviews and Meta-analyses (PRISMA)

92 statement. The search terms used included “oxcarbazepine”, “oxcarbamazepine”,
93 “ocbz”, “oxtellar”, or “trileptal” and “population pharmacokinetic”, “pharmacokinetic
94 modeling”, “nonlinear mixed effect model”, “NONMEM”, “Pmetrics”,
95 “WINNONMIX”, “ADAPT”, “P-PHARM”, “nlmixed”, “NLME”, “USC*PACK”, or
96 “MONOLIX”. Besides, references of all included studies were searched.

97 All the relevant articles selected from the databases and reference lists were
98 screened to evaluate their eligibility for inclusion according to the following criteria:
99 target group of studies was human; OXC was the study drug; PPK analysis was
100 conducted in the study; and the study was published in English. A study was excluded
101 if it was a review or external evaluation article; the data presented overlapped with
102 previous studies but with smaller sample sizes; or the PK parameters were incomplete.
103 Two independent authors screened the title and abstracts as well as the full-text of
104 each article to determine their eligibility. Discrepancies were resolved by a third
105 senior investigator.

106 **2.2 Evaluation of Literature Quality**

107 The quality of the PPK report was evaluated according to previous guidelines of
108 PK reports (Kanji et al. [17] and Jansen et al. [18]) that assist in transparent and
109 complete reporting. A checklist with 24 items was developed to summarise the key
110 points of the report. All items were categorised into five sections: the title and abstract,
111 background and introduction, methods, results, and discussion and conclusion,
112 according to their relevance to the sections of the research report.

113 If there was a description in the paper that conforms to the criterion, the scoring

114 item will be counted as 1 point. If it was not reported, zero points were given. Each
115 identified study was evaluated based on these criteria. Compliance of the included
116 PPK studies was reported as a proportion. The compliance rate was calculated as
117 follows:

$$\text{compliance rate (\%)} = \frac{\text{sum of reported items}}{\text{sum of all items}} \times 100\%$$

118 **2.3 Data Extraction**

119 A standardised data collection was used to extract the relevant information from
120 each eligible study as follows: patient characteristics, such as age, weight, and
121 laboratory test, ; the study design, such as research types, quantity of subjects and
122 observations; dose regimens; OXC formulation; and PPK study information such as
123 data analysis software and algorithm, model strategies, final PK parameters, and
124 tested and significant covariates.

125 **2.4 Study Comparison**

126 We developed virtual patients with different age: infants (10 kg, 1-year-old) taking
127 300 mg OXC every 12 h (q12h), children (30 kg, 10 years old) taking 300 mg OXC
128 q12h, and adults (70 kg, 40 years old) taking 600 mg OXC q12h. The
129 concentration–time profiles in virtual patients were drawn on the basis of the restored
130 PPK model and study population in each included study. They received multiple
131 doses of OXC alone and achieve stable state. The sex of the virtual patient was
132 selected as male.

133 The identified covariates effect on clearance (CL) in the included studies was
134 analysed and showed by a forest map. The CL change less than between 80%-125%

135 was not considered to have a significant clinical correlation [19]. For binary
136 covariates such as co-administration with medications, we use 0 for monotherapy and
137 1 for co-administration with medications. For continuous covariates that were
138 included in only one model, we used the same range values as the study. For
139 continuous covariates included in multiple studies, we scaled them to the same range
140 for comparison. The effect of each covariate on CL was shown as the ratio of CL in
141 the range of the covariate divided by the typical CL value in each study.

142 The simulation was conducted using NONMEM (version 7.4; ICON Development
143 Solutions, Ellicott City, MD, USA) software. R (version 3.5.1;
144 <http://www.r-project.org/>) was used to generate the concentration–time plots and
145 forest plots.

146 **3. Results**

147 **3.1 Study Identification**

148 A total of 155 articles were selected: 87 articles were selected from PubMed; 67
149 articles from the Embase database; and one article from the references of selected
150 articles. After initial screening, 16 full-text studies were assessed for eligibility. One
151 study was excluded because the final PK parameters were not presented [20], and two
152 were excluded because of language [21,22]. In addition, the study conducted by Sallas
153 et al. [23] was excluded because the study data overlapped with that of Sugiyama et al.
154 [24]. Finally, 12 articles were included in the study (**Fig. 1**).

155 **3.2 Evaluation of Literature Quality**

156 According to the guidelines, we summarised the quality of OXC PPK studies based

157 on 35 items, as outlined in **Table 1**. Compared with that of the PPK articles published
158 between 2005 and 2013, the quality of PPK studies published between 2014 and 2019
159 significantly improved [compliance rate median (range): 71.4% (68.6%–71.4%) vs.
160 94.3% (85.7%–97.1%)]. Generally, prospective studies show better compliance than
161 retrospective studies; however, the prospective study by Northam et al. [25] had a
162 compliance rate of only 73.5%. This may be due to the lack of a standard reporting
163 guide published at that time.

164 After the guidelines were published, the quality of PPK study reports improved
165 over time. Nonetheless, several studies still have compliance rate of less than 60%,
166 which included deficiencies in the description of sample, statistical methods and
167 software, and methods for handling missing data.

168 **3.3 Study Characteristics**

169 The included studies were published from 2005 to 2019. The total quantity of
170 subjects in included articles between 12 and 573. Most PPK analysis was performed
171 in patients with epilepsy [24,26-33], and only Antunes et al. [34] enrolled healthy
172 subjects. One study was conducted only in infants [25], seven studies were conducted
173 in children [24,25,27,28,30-32], two studies included both children and adults [26,33],
174 and two studies only enrolled adults [29,34]. Subjects in all the included studies were
175 administered OXC orally, with doses ranging from 75 to 1800 mg/d. In most studies,
176 sparse sampling was employed, with 1 to 4 samples collected per individual. Detailed
177 characteristics of all included studies were listed in **Table 1**.

178 The PPK analyses were all conducted using population modelling software,

179 including NONMEM (Icon, Dublin, Ireland) [24-26,29-31,34,35], Phoenix NLME
180 (Certara L.P. Pharsight, St. Louis, MO, USA) [26–28], and Monolix (Lixoft, Antony,
181 France) [32]. The most commonly used algorithm was first-order conditional
182 estimation with the η - ε interaction.

183 Most studies described the PK of MHD as a one-compartment model with
184 first-order absorption and elimination. Rodrigues et al. [32] described the PK of OXC
185 and its active metabolite MHD with a two-compartment model with first-order
186 absorption and elimination. Antunes et al. [34] described the PK of OXC and its
187 active metabolite enantiomers using a two-compartment model with transit absorption
188 and first-order elimination.

189 All studies used either internal or external evaluation. The commonly method of
190 external evaluation is the goodness-of-fit plot, while the second popular method was
191 the visual predictive check. Although a normalised prediction distribution error
192 (NPDE) has better properties [36], it is not commonly used [29,30,32,34]. Four
193 studies performed an external evaluation using an independent dataset, all of which
194 showed acceptable predictability [28,30,31,33].

195 **3.4 Study Comparison**

196 There were no obvious differences in the PK of OXC due to ethnicity. **Fig. 2** shows
197 concentration-time profiles of all studies that are simulated with virtual infant (a),
198 children (b) and adult (c) patients. The model established by Peng et al. [27] which
199 presented lower CL, displayed a much higher trough concentration (C_{trough}) than
200 others (CL: 0.016 vs. 0.035–0.073 L/h/kg). On the contrary, the PPK model

201 established by Yu et al. [33] which presented a higher CL, showed a considerably
202 lower C_{trough} than others (CL: 0.084 vs. 0.035–0.073 L/h/kg).

203 The estimated median CL was 0.078 L/h/kg for infants (10 kg, 1 year) [25], 0.058
204 (range: 0.016–0.084) L/h/kg for children (30 kg, 10 years) [24,26-28,30-33], and
205 0.033 (range: 0.029–0.0599) L/h/kg for adults (70 kg, 40 years) [26,29,33-35]. The
206 median CL per kg in infants and children was higher than that in adults. Furthermore,
207 children had a larger variability in CL than adults (0.016–0.084 L/h/kg vs. 0.029–0.06
208 L/h/kg).

209 Moreover, the median Vd per kg in infants and children was higher than that in
210 adults. The determined median Vd was 1.38 L/kg for infants, 0.78 (range: 0.47–2.16)
211 L/kg for children, and 0.45 (range: 0.2–1.48) L/kg for adults.

212 The final PK parameters included in our review are summarised in **Table 3**. The
213 between-subject variability (BSV) was determined from exponential models in all
214 included studies. The median (range) BSV was as follows: CL, 16.84%
215 (11.09%–34.21%); Vd, 35.35% (6.88%–104.4%); and Ka, 24.05% (8.27%–39.82%).
216 The residual unexplained variability (RUV) was described using the proportional
217 model: 12.05% (4%–32%) or additive model: 3.396 mg/L (0.93–0.512 mg/L).

218 All PPK analysis intended to explain the BSV of MHD PK by investigating
219 possible covariates. The covariates investigated and identified in each study are
220 visually shown in **Fig. 3**. The commonly investigated covariates included weight, sex,
221 age, co-administered medications, body surface area, and estimated glomerular
222 filtration rate (eGFR). The identified covariates for CL included weight,

223 co-administered medications, eGFR, dose. All the investigated and identified
224 covariates in the PPK model are summarised in **Table S1**.

225 It was found that eGFR significantly affected MHD CL, according to the
226 observations from Lin et al. [29]. In patients with impaired renal function (eGFR:
227 20–80 mL/min), the CL was 34.8% (9.4%–64.2%) lower than those with normal renal
228 function.

229 There was one study identified dose could affect CL, which may indicate a
230 nonlinear elimination of MHD [27]. However, these effects may on account of the
231 dose adjustment in clinical practice according to the TDM process, which can be
232 misinterpreted as nonlinearity in the system [37]. Therefore, further in-depth study on
233 the possible PK of MHD is necessary.

234 The influence of all included covariates on CL is shown in **Fig. 4**. The ranges of
235 continuous covariates that were scaled are as follows: the weight of adults was set at
236 40–100 kg and that of children was set at 16–40 kg. The age was set as 18–75 years.
237 The range of eGFR and alanine aminotransferase (ALT) were set as 20–120 mL/min
238 and 5–150 U/L, respectively. The dose of OXC was set as 75–1350 mg/kg/d.

239 Ten of all studies that investigated impact of the weight indicated that it was
240 associated with the CL of MHD [24,26-32,34,35]. Weight had a significant influence
241 on CL. Our finding showed that the CL of patients with different weight could range
242 from 0.54 to 1.8 times compared to the typical patient (children: 30kg, adults: 70kg).
243 Co-administration with EIAEDs also significantly affected CL in children and adults,
244 which approximately increased 1.17 to 1.63 times [24-26,28,32]; in four studies, the

245 clinical significance of the impact of EIAED co-administration on CL was more than
246 20% [24-26,32]. eGFR was identified to significantly affect the CL of adults with a
247 range of 0.33 to 1.24 times [29] compared to a typical patient with an eGFR of 90
248 mL/min. ALT was also found to have a significant impact on CL in children, with a
249 range of 0.73 to 1.35 times compared to a typical patient with an ALT level of 30 U/L
250 [33].

251 Four studies conducted a model-based simulation to show the influence of
252 covariates on the PK profile and optimize the dosage regimen to achieve the target
253 MHD concentrations of 3 and 35 mg/L recommended by the current guideline [29-32].
254 For adults and paediatric patients, all the four studies recommended adjusting the
255 dosage [29-32]. Chen et al. [31] and Rodrigues et al. [32] had a similar recommended
256 dose range for paediatric patients based on their weight. However, Lin et al. [30]
257 recommended a lower dose than others, which may be explained by the lower CL in
258 their study than others (0.04 L/h/kg vs. 0.059/0.057 L/h/kg). Meanwhile, Rodrigues et
259 al. [32] also recommended increasing the maintenance dose by 50% above the
260 recommended maintenance dose for children treated with EIAEDs.

261 **4. Discussion**

262 To our knowledge, this is the first review that summarised data concerning
263 previously published PPK models of OXC and its active metabolite MHD. We found
264 considerable PK differences between children and adults. We also provided evidence
265 regarding adjustment of the dose regimen according to weight, co-administration with
266 EIAEDs, and eGFR.

267 The PK of MHD showed no significant differences due to ethnicity. According to
268 the PPK studies, there were similar PK profiles in adults. The weight-standardised CL
269 in Caucasians (median: 0.045, range: 0.029–0.060 L/h/kg) was similar to that in
270 Asians (median: 0.036, range: 0.033–0.039 L/h/kg) ($P > 0.05$). Likewise, most PPK
271 studies performed in paediatric patients also displayed comparable PK profiles.
272 Moreover, Sugiyama et al. [24] directly compared the PK of MHD among Caucasian,
273 Black, and Asian populations and found no obvious differences among these
274 sub-populations. Nevertheless, studies conducted in Chinese populations showed
275 larger variabilities than other ethnicities (0.016–0.084 L/h/kg vs. 0.043–0.078 L/h/kg).
276 The reason for this is unclear and may require still exploration.

277 The PK of MHD displayed considerable difference among infant, children, and
278 adult patients. Adults generally displayed lower CL per kg than the infants and
279 children, consistent with the classical PK investigations [38]. This difference may be
280 attributed to the lower body fat/lean mass ratio, higher kidney blood flow, and higher
281 total body water in children [39]. Furthermore, children had a wider
282 weight-standardised CL range than adults, which is attributed to the maturity of the
283 liver and inefficient UGT enzyme capacity [40,41]. A higher CL resulted in a lower
284 concentration of MHD. Therefore, a higher dosage could be used in paediatric
285 patients to achieve the target steady-state concentration of MHD [23].

286 Recently, OXC was increasingly off-label used to treat epileptic seizures in infants
287 [39] owing to its linear PK, better safety, and well-tolerated profile [6]. Piña-Garza et
288 al. [42] reported that OXC is relatively safe and effective in the treatment of infant

289 seizures. To date, only one PPK study has been conducted in paediatric patients aged
290 0.2 to 3.75 years [25]; therefore, clinical data of OXC in the treatment of infants are
291 limited. To ensure better efficacy and safety in infants, further studies are necessary to
292 explore the covariates that affect the variability of OXC.

293 Previous PPK studies found that EIAEDs could significantly increase the CL of
294 MHD. This is consistent with the PK study performed by McKee et al. [43], who
295 found that CBZ and phenytoin (PHT) decreased the AUC of MHD by 40% and 29%,
296 respectively. As MHD is primarily cleared via glucuronic acid conjugation, EIAEDs
297 may play a more important role through the induction of UGT-mediated
298 glucuronidation to decrease serum MHD concentration [35]. Lower exposure could
299 increase the risk of seizures [44]; therefore, the dose of OXC may be increased when
300 co-administered with EIAEDs.

301 Renal function may also influence the CL of MHD because OXC and MHD are
302 almost completely excreted by the kidney (94%–97.7%) [5]. Lin et al. [29] found that
303 MHD CL decreased by 64.2% when the eGFR decreased to 20 mL/min and
304 recommended dose adjustment according to eGFR in adult patients. When the eGFR
305 is normal, at approximately 90–120 mL/min, the recommended dose is 225 or 300 mg
306 q12h [29]. When the eGFR is less than 30 mL/min, the recommended dose is 75 mg
307 q12h. This was similar to the OXC label recommendation that indicated that patients
308 with impaired renal function (creatinine clearance <30 mL/min) should initiate OXC
309 at one-half of the dose of 300 mg/day q12h. Therefore, to ensure a safe dose for adults
310 with renal dysfunction, a more detailed dose recommendation may be required.

311 However, there are also PPK studies that did not identify eGFR as a covariate [24,33].
312 This may be because of the low proportion of study cohorts with low eGFR levels.
313 Thus, patients with renal impairment on MHD clearance warrant further investigation
314 to optimise their dosing regimen.

315 There were many unknown variabilities in children that could not be explained by
316 previously reported PPK models. In the included studies, children had a larger RUV
317 (additive model 0.93–5.12 mg/L; proportional model 4%–32%) than adults (RUV:
318 additive model 2.38–3.80 mg/L; proportional model 1.7%–24.5%). Moreover, the
319 practice guideline for the TDM of AEDs indicated the benefits of TDM for children
320 such as diagnosis of clinical toxicity and guide dosage adjustment [45]. Thus, TDM
321 monitoring is more crucial for paediatric patients taking OXC.

322 **5. Conclusions**

323 The PPK studies of OXC have been extensively reviewed. The PK of MHD has a
324 large difference between children and adults. Furthermore, children have a larger
325 variability in PK than adults. This review showed that to optimise the dosing regimen
326 of OXC, the weight, identity of co-administered drugs, and renal function of patients
327 should be considered.

328 **6. Expert Opinion**

329 Long-term maintenance therapy with drugs is one of the important ways of
330 anti-epilepsy. It is high requirements for maintenance dose and dose adjustment, and
331 most antiepileptic drugs have great variability. Therefore, in order to improve the
332 safety and effectiveness, researchers have conducted PPK studies on antiepileptic

333 drugs, hoping to find the potential covariates that affect its PK variation.

334 Although, there are many PPK models established, few articles summarised the
335 information of the published PPK studies. This review attempts to summarize the
336 knowledge concerning the PPK modeling of oxcarbazepine to determine the factors
337 that can affect its clearance in the body. We find that there are no significantly
338 difference on races. However, our research shows that children have more variation
339 than adults. Finally, we also explored the significant covariates that may have clinical
340 impact to provide evidence for adjusting dosage regimens of oxcarbazepine.

341 Owing to the better PK profile and formula diversity, it is increasingly used in
342 the special populations, such as infants and elders. Infants have great variability
343 because of their physiological characteristics and TDM may help to optimize the
344 dosage regimen. However, most hospitals do not realize the importance of TDM
345 monitoring. In the future five years, it is necessary to conduct further studies on
346 infants to find significant covariates that affects their PK variation. Nevertheless, the
347 covariates selected are often different from the theory. This may be due to the smaller
348 variation range of the covariates or the lower proportion of the covariates with large
349 variation range. Therefore, in the future PPK studies, we need to focus on the
350 collection of people with large variation of potential covariates suspected in clinical
351 practice. We maybe get objective and credible results.

352 In clinical practice, we need to optimize dosing according to PK/PD. PPK studies
353 had shown that the co-administration with inducers can increase the dose of OXC to
354 achieve the therapeutic target concentration. However, there is no corresponding PD

355 index to determine whether the dose of OXC should be increased in combination with
356 inducers. Therefore, it is very important to establish PK / PD model to explore the
357 relationship between dose-exposure-response. Furthermore, we can also use the
358 established PK / PD model to refine the treatment window in the different disease
359 severity and population.

360 **6.1 Five-year Review**

361 In order to optimize the clinical administration scheme and reduce the occurrence of
362 adverse events, PPK modeling was conducted for drugs with large variability and
363 narrow treatment window. Although many models have been established, there is no
364 unified standard for the quality of effective identification models. External validation
365 is the most. In the five future years, it will explore the criteria for evaluating the
366 quality of models and apply them to evaluate the quality of published models.

367 The ultimate purpose of establishing PPK model is to solve practical difficulties.
368 However, the application of PPK models is mainly based on dose simulation. In the
369 future, exploring meaningful clinical application is one of the main development
370 directions of PPK study. For instance, the PPK model is used for the remedial
371 administration of missed late administration. Epilepsy patients are stricter with the
372 time of taking drugs. Once the occurrence of missing a dose, it is likely to relapse
373 epilepsy. FDA guidelines for remedial administration of antiepileptic drugs are vague.
374 Therefore, PPK models plus TDM can be used to give more precise and quantitative
375 remedy for patients with missed dose. It can minimize the deviation time from the
376 treatment window and maximize the benefit of patients.

377 **Acknowledgments:**

378 The authors would like to sincerely thank *Dr. Vincent Jullien* from Service de
379 Pharmacologie, Hôpital européen Georges Pompidou, France; *Yang Wang* and *Jing*
380 *Peng* from Department of Pharmacy, Wuhan Children's Hospital, China; *Yunli Yu*
381 from Department of Clinical Pharmacology, The Second Affiliated Hospital of
382 Soochow University, China for providing details about the research and active
383 discussions on the coding. We would like to thank *Hai-ni Wen* MPharm from
384 Shanghai Chest Hospital; and Ph.D. candidate *Xiao-qin Liu* from Department of
385 Pharmacy, Huashan Hospital, Fudan University, China for their critical comments.
386 We would also like to thank Editage (www.editage.cn) for English language editing.

387 **Funding:** Not applicable.

388 **Declaration of interest**

389 Yue-ting Chen, Chen-yu Wang, Yi-wei Yin, Zi-ran Li, Wei-wei Lin, Min Zhu and
390 Zheng Jiao declare that they have no conflict of interest.

391 **Author contributions**

392 **Yue-ting Chen:** Data curation, Writing- Original draft preparation, Writing-
393 Reviewing and Editing, Visualization; **Chen-yu Wang:** Data curation, Writing-
394 Reviewing and Editing; **Yi-Wei Yin:** Writing- Reviewing and Editing, Supervision;
395 **Zi-ran Li:** Software, Writing- Reviewing and Editing; **Wei-wei Lin:** Software,
396 Validation, Writing- Reviewing and Editing; **Min Zhu:** Software; **Zheng Jiao:**
397 Conceptualization, Methodology, Writing- Reviewing and Editing, Supervision.

398 **Reference**

- 399 1. Schwabe S. Oxcarbazepine: clinical development program. *Epilepsia*. 1994;35
400 Suppl 5:S51-3.
- 401 2. Wellington K, Goa KL. Oxcarbazepine: an update of its efficacy in the
402 management of epilepsy. *CNS Drugs*. 2001;15(2):137-63.
- 403 3. Schachter SC. Oxcarbazepine: current status and clinical applications. *Expert*
404 *Opin Investig Drugs*. 1999 Jul;8(7):1103-12.
- 405 4. Maiti R, Mishra BR, Sanyal S, et al. Effect of carbamazepine and
406 oxcarbazepine on serum neuron-specific enolase in focal seizures: A
407 randomized controlled trial. *Epilepsy Res*. 2017 Dec;138:5-10.
- 408 5. Schütz H, Feldmann KF, Faigle JW, et al. The metabolism of
409 ¹⁴C-oxcarbazepine in man. *Xenobiotica*. 1986 Aug;16(8):769-78.
- 410 6. May TW, Korn-Merker E, Rambeck B. Clinical pharmacokinetics of
411 oxcarbazepine. *Clin Pharmacokinet*. 2003;42(12):1023-42.
- 412 7. Di Girolamo G, Opezzo JA, Schere D, et al. Parent drug and/or metabolite?
413 Which of them is most appropriate to establish bioequivalence of two oral
414 oxcarbazepine formulations in healthy volunteers? *Expert Opin Pharmacother*.
415 2007 Jul;8(10):1415-23.
- 416 8. Lu Y, Fang Y, Wu X, et al. Effects of UGT1A9 genetic polymorphisms on
417 monohydroxylated derivative of oxcarbazepine concentrations and
418 oxcarbazepine monotherapeutic efficacy in Chinese patients with epilepsy. *Eur*
419 *J Clin Pharmacol*. 2017 Mar;73(3):307-315.

- 420 9. van Heiningen PN, Eve MD, Oosterhuis B, et al. The influence of age on the
421 pharmacokinetics of the antiepileptic agent oxcarbazepine. *Clin Pharmacol*
422 *Ther.* 1991 Oct;50(4):410-9.
- 423 10. Patsalos PN, Elyas AA, Zakrzewska JM. Protein binding of oxcarbazepine and
424 its primary active metabolite, 10-hydroxycarbazepine, in patients with
425 trigeminal neuralgia. *Eur J Clin Pharmacol.* 1990;39(4):413-5.
- 426 11. Flesch G. Overview of the clinical pharmacokinetics of oxcarbazepine. *Clin*
427 *Drug Investig.* 2004;24(4):185-203.
- 428 12. Rouan MC, Lecaillon JB, Godbillon J, et al. The effect of renal impairment on
429 the pharmacokinetics of oxcarbazepine and its metabolites. *Eur J Clin*
430 *Pharmacol.* 1994;47(2):161-7.
- 431 13. Sachdeo R, Beydoun A, Schachter S, et al. Oxcarbazepine (Trileptal) as
432 monotherapy in patients with partial seizures. *Neurology.* 2001 Sep
433 11;57(5):864-71.
- 434 14. Bring P, Ensom MH. Does oxcarbazepine warrant therapeutic drug monitoring?
435 A critical review. *Clin Pharmacokinet.* 2008;47(12):767-78.
- 436 15. Sheiner LB, Rosenberg B, Melmon KL. Modelling of individual
437 pharmacokinetics for computer-aided drug dosage. *Comput Biomed Res.* 1972
438 Oct;5(5):411-59.
- 439 16. Sasaki T, Tabuchi H, Higuchi S, et al. Warfarin-dosing algorithm based on a
440 population pharmacokinetic/pharmacodynamic model combined with
441 Bayesian forecasting. *Pharmacogenomics.* 2009 Aug;10(8):1257-66.

- 442 17. Kanji S, Hayes M, Ling A, et al. Reporting Guidelines for Clinical
443 Pharmacokinetic Studies: The ClinPK Statement. *Clin Pharmacokinet*. 2015
444 Jul;54(7):783-95.
- 445 18. Jansen KM, McLeay SC, Barras MA, et al. Reporting a population
446 pharmacokinetic-pharmacodynamic study: a journal's perspective. *Clin
447 Pharmacokinet*. 2014 Feb;53(2):111-22.
- 448 19. Burns DR, Elswick RK, Jr. Equivalence testing with dental clinical trials. *J
449 Dent Res*. 2001 Jun;80(6):1513-7.
- 450 20. Ahmad A, Garnett WR. Carbamazepine extended-release capsules vs.
451 oxcarbazepine: computer simulations of the effect of missed doses on drug
452 plasma concentrations. *Curr Med Res Opin*. 2005 Sep;21(9):1363-8.
- 453 21. Ling J, Qian LX, Ding JJ, et al. [Effects of multiple-trough sampling design
454 and algorithm on the estimation of population and individual pharmacokinetic
455 parameters]. *Yao Xue Xue Bao*. 2014 May;49(5):686-94.
- 456 22. Liu M, Ma CL, Jiao Z, et al. Population pharmacokinetics of oxcarbazepine in
457 Chinese epilepsy patients [Article]. *Yaoxue Xuebao*. 2018;53(8):1318-1323.
- 458 23. Sallas WM, Milosavljev S, D'Souza J, et al. Pharmacokinetic drug interactions
459 in children taking oxcarbazepine. *Clin Pharmacol Ther*. 2003
460 Aug;74(2):138-49.
- 461 24. Sugiyama I, Bouillon T, Yamaguchi M, et al. Population pharmacokinetic
462 analysis for 10-monohydroxy derivative of oxcarbazepine in pediatric
463 epileptic patients shows no difference between Japanese and other ethnicities.

- 464 Drug Metab Pharmacokinet. 2015 Apr;30(2):160-7.
- 465 25. Northam RS, Hernandez AW, Litzinger MJ, et al. Oxcarbazepine in infants
466 and young children with partial seizures. *Pediatr Neurol.* 2005
467 Nov;33(5):337-44.
- 468 26. Park KJ, Kim JR, Joo EY, et al. Drug interaction and pharmacokinetic
469 modeling of oxcarbazepine in korean patients with epilepsy. *Clin*
470 *Neuropharmacol.* 2012 Jan-Feb;35(1):40-4.
- 471 27. Peng J, Zhang HN, Liu ZS, et al. Population pharmacokinetics of
472 oxcarbazepine active metabolite in Chinese children with epilepsy. *Int J Clin*
473 *Pharmacol Ther.* 2014 Aug;52(8):684-92.
- 474 28. Wang Y, Zhang HN, Niu CH, et al. Population pharmacokinetics modeling of
475 oxcarbazepine to characterize drug interactions in Chinese children with
476 epilepsy. *Acta Pharmacol Sin.* 2014 Oct;35(10):1342-50.
- 477 29. Lin WW, Wang CL, Jiao Z, et al. Glomerular Filtration Rate Is a Major
478 Predictor of Clearance of Oxcarbazepine Active Metabolite in Adult Chinese
479 Epileptic Patients: A Population Pharmacokinetic Analysis. *Ther Drug Monit.*
480 2019 Oct;41(5):665-673.
- 481 30. Lin WW, Li XW, Jiao Z, et al. Population pharmacokinetics of oxcarbazepine
482 active metabolite in Chinese paediatric epilepsy patients and its application in
483 individualised dosage regimens. *Eur J Clin Pharmacol.* 2019
484 Mar;75(3):381-392.
- 485 31. Chen CY, Zhou Y, Cui YM, et al. Population pharmacokinetics and dose

- 486 simulation of oxcarbazepine in Chinese paediatric patients with epilepsy. *J*
487 *Clin Pharm Ther.* 2019 Apr;44(2):300-311.
- 488 32. Rodrigues C, Chiron C, Rey E, et al. Population pharmacokinetics of
489 oxcarbazepine and its monohydroxy derivative in epileptic children. *Br J Clin*
490 *Pharmacol.* 2017 Dec;83(12):2695-2708.
- 491 33. Yu Y, Zhang Q, Xu W, et al. Population pharmacokinetic modeling of
492 oxcarbazepine active metabolite in Chinese patients with epilepsy. *Eur J Drug*
493 *Metab Pharmacokinet.* 2016 Aug;41(4):345-51.
- 494 34. Antunes NJ, van Dijkman SC, Lanchote VL, et al. Population
495 pharmacokinetics of oxcarbazepine and its metabolite 10-hydroxycarbazepine
496 in healthy subjects. *Eur J Pharm Sci.* 2017 Nov 15;109s:S116-s123.
- 497 35. Wegner I, Edelbroek P, de Haan GJ, et al. Drug monitoring of lamotrigine and
498 oxcarbazepine combination during pregnancy. *Epilepsia.* 2010
499 Dec;51(12):2500-2.
- 500 36. Comets E, Brendel K, Mentré F. Computing normalised prediction distribution
501 errors to evaluate nonlinear mixed-effect models: the npde add-on package for
502 R. *Comput Methods Programs Biomed.* 2008 May;90(2):154-66.
- 503 37. Ahn JE, Birnbaum AK, Brundage RC. Inherent correlation between dose and
504 clearance in therapeutic drug monitoring settings: possible misinterpretation in
505 population pharmacokinetic analyses. *J Pharmacokinet Pharmacodyn.* 2005
506 Dec;32(5-6):703-18.
- 507 38. Perucca E. Pharmacokinetic variability of new antiepileptic drugs at different

- 508 ages. *Ther Drug Monit.* 2005 Dec;27(6):714-7.
- 509 39. Perucca E. Clinical pharmacokinetics of new-generation antiepileptic drugs at
510 the extremes of age. *Clin Pharmacokinet.* 2006;45(4):351-63.
- 511 40. Choonara IA, McKay P, Hain R, et al. Morphine metabolism in children. *Br J*
512 *Clin Pharmacol.* 1989 Nov;28(5):599-604.
- 513 41. de Wildt SN, Kearns GL, Leeder JS, et al. Glucuronidation in humans.
514 Pharmacogenetic and developmental aspects. *Clin Pharmacokinet.* 1999
515 Jun;36(6):439-52.
- 516 42. Piña-Garza JE, Espinoza R, Nordli D, et al. Oxcarbazepine adjunctive therapy
517 in infants and young children with partial seizures. *Neurology.* 2005 Nov
518 8;65(9):1370-5.
- 519 43. McKee PJ, Blacklaw J, Forrest G, et al. A double-blind, placebo-controlled
520 interaction study between oxcarbazepine and carbamazepine, sodium
521 valproate and phenytoin in epileptic patients. *Br J Clin Pharmacol.* 1994
522 Jan;37(1):27-32.
- 523 44. French JA, Baroldi P, Brittain ST, et al. Efficacy and safety of
524 extended-release oxcarbazepine (Oxtellar XR™) as adjunctive therapy in
525 patients with refractory partial-onset seizures: a randomized controlled trial.
526 *Acta Neurol Scand.* 2014 Mar;129(3):143-53.
- 527 45. Patsalos PN, Berry DJ, Bourgeois BF, et al. Antiepileptic drugs--best practice
528 guidelines for therapeutic drug monitoring: a position paper by the
529 subcommission on therapeutic drug monitoring, ILAE Commission on

530 Therapeutic Strategies. *Epilepsia*. 2008 Jul;49(7):1239-76.

531

532 **Figure legends**

533 **Fig. 1 PRISMA flow diagram for the identification of population**
534 **pharmacokinetic studies.**

535

536 **Fig. 2 Concentration-time profiles at steady state for (a) infants, (b) children, and**
537 **(c) adults in retrieved studies.**

538 The solid line represents median of the simulated concentration-time profile. The light
539 shadows represent the 10th-90th percentiles of the simulated concentration-time
540 profiles. The estimated glomerular filtration rate (eGFR) was set to 90 mL/min for
541 adults. The alanine aminotransferase (ALT) for children was set to 30 U/L. Age was
542 set to 18-75 years. All patients were assumed to be male receiving OXC monotherapy
543 at a dose of 300 mg for infants and children; 600 mg for adults.

544

545 **Fig. 3 Investigated and identified covariates for clearance of oxcarbazepine.**

546 AST: aspartate aminotransferase; ALT: alanine aminotransferase; BSA: body surface
547 area; BMI: body mass index; BUN: blood urea nitrogen; SCr: serum creatinine; eGFR:
548 the estimated glomerular filtration rate; HCT: red blood cell specific volume; HGB:
549 hemoglobin; HT: height; LTG: lamotrigine; LEV: levetiracetam; VPA:
550 co-administration with valproate acid; WT: weight.

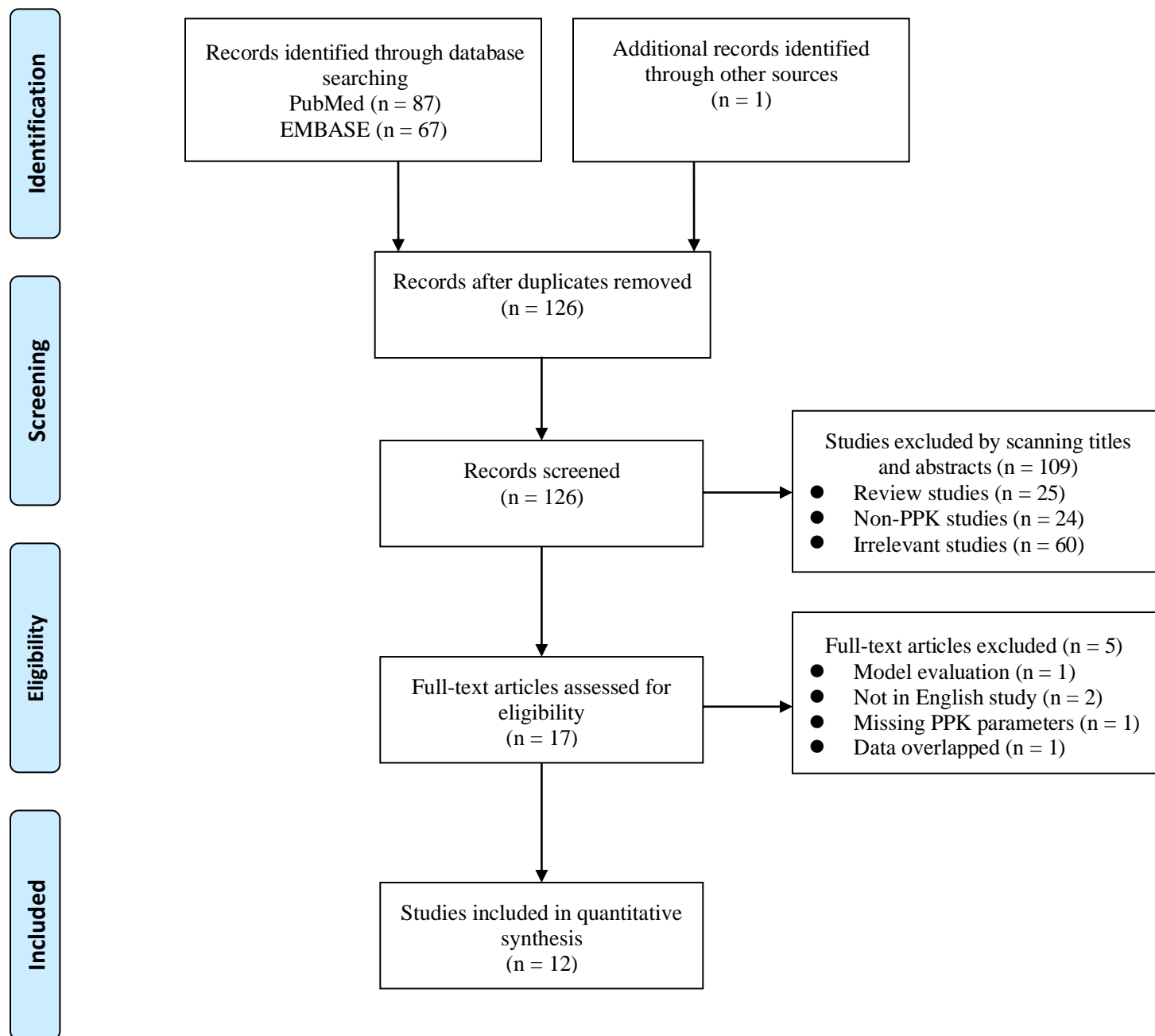
551

552 **Fig. 4 Covariate effect on the clearance of oxcarbazepine.**

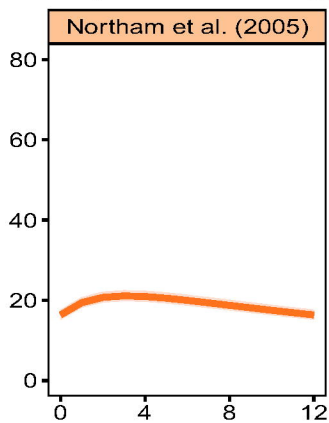
553 The horizontal bars represent the covariate effect on clearance in each study. The
554 typical value of clearance in each study was considered to be 1. The effect of each
555 covariate for clearance is displayed by the ratio of clearance in the range of each
556 covariate to the typical clearance value. The shaded gray area ranges from 0.8 to 1.25.

557 ALT: alanine aminotransferase; eGFR: the estimated glomerular filtration rate; LEV:
558 levetiracetam; LTG: lamotrigine; VPA: co-administration with valproate acid; Y: yes,
559 co-administration; N: no, not co-administration; M: male; F: female.

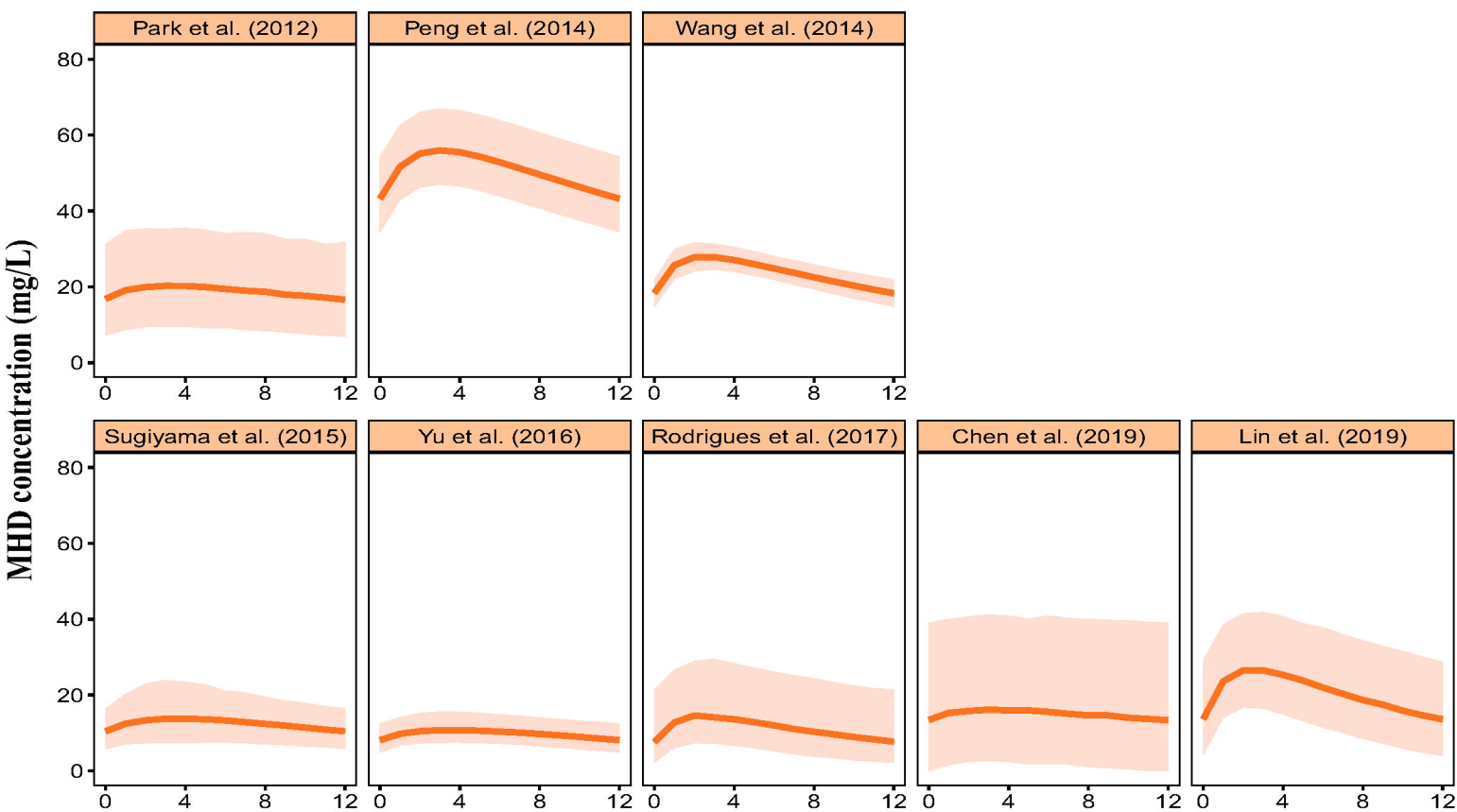
560



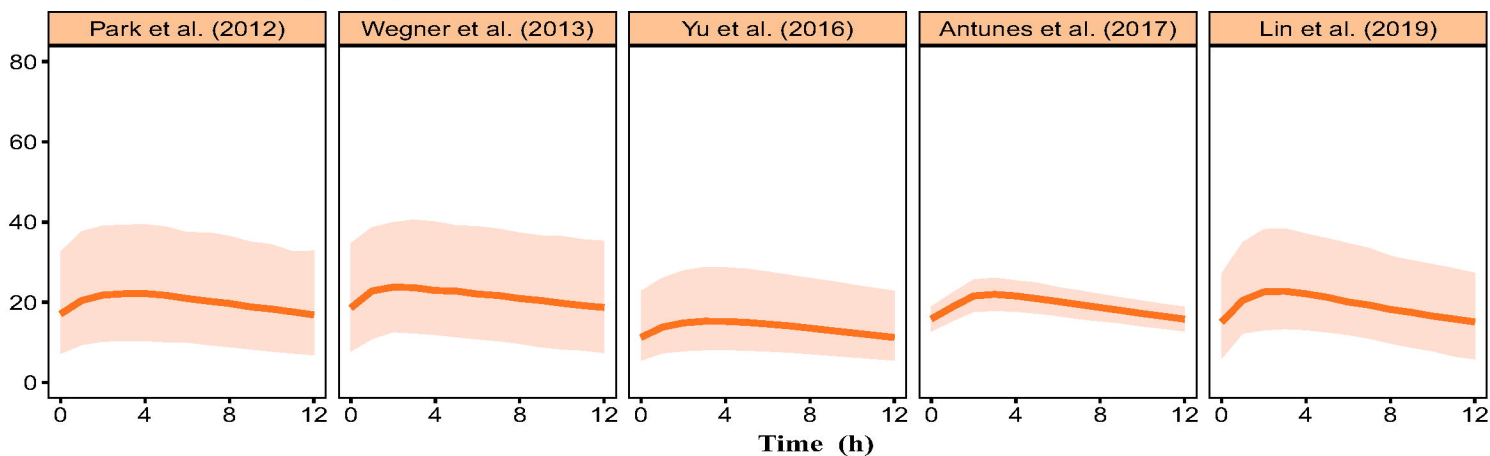
a (infants: 10 kg, 1 year)

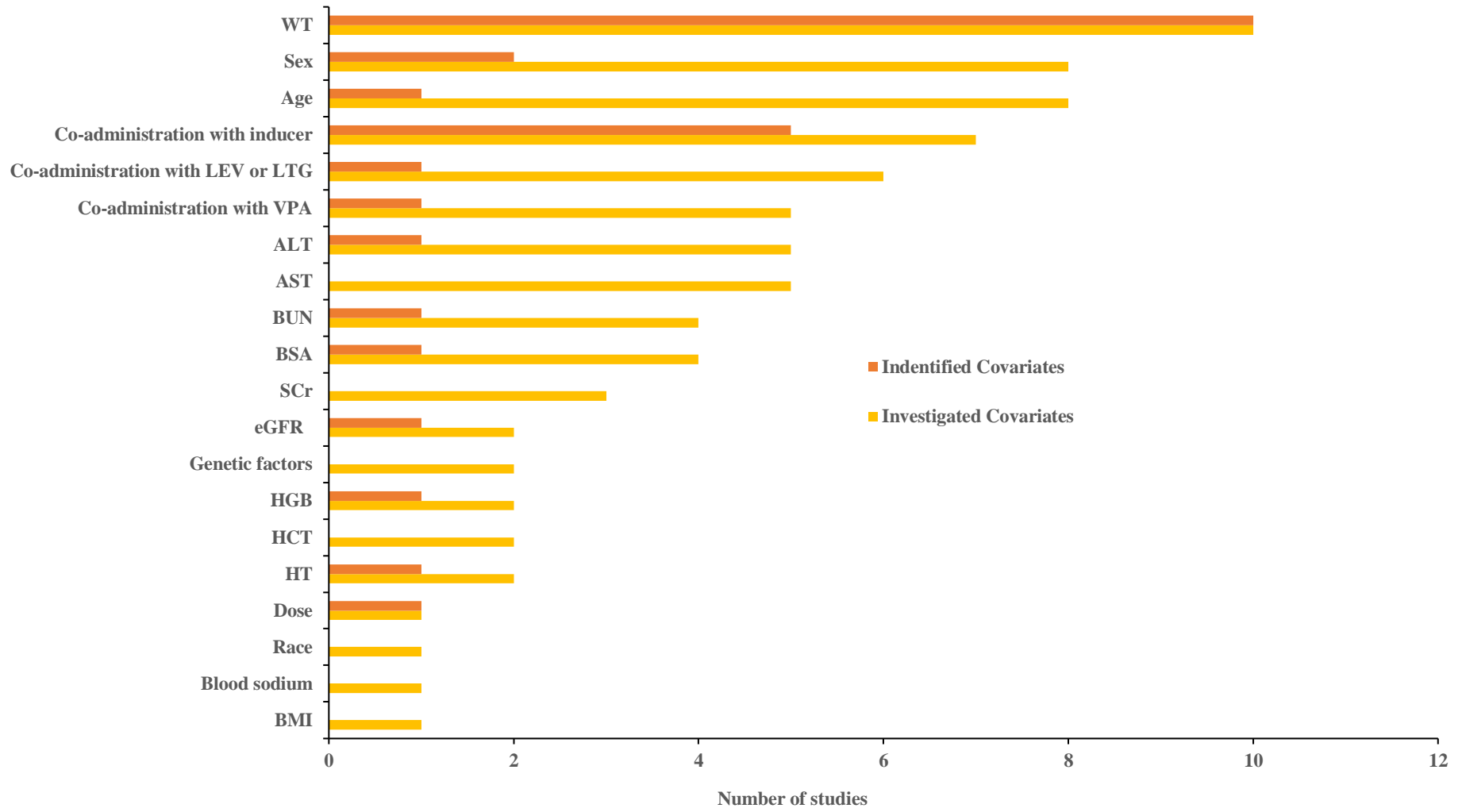


b (children: 30 kg, 10 years)



c (adults : 70 kg, 40 years)





Peng et al.(2014)
 Wegner et al.(2013)
 Wegner et al.(2013)
 Peng et al.(2014)
 Wang et al.(2014)
 Sugiyama et al. (2015)
 Rodrigues et al.(2017)
 Chen et al. (2019)
 Lin et al.(2019)
 Park et al.(2012)
 Lin et al.(2019)
 Antunes et al.(2017)
 Sugiyama et al. (2015)
 Northam et al.(2005)
 Sugiyama et al. (2015)
 Northam et al.(2005)
 Sugiyama et al. (2015)
 Northam et al.(2005)
 Park et al.(2012)
 Wang et al.(2014)
 Rodrigues et al.(2017)
 Wang et al.(2014)
 Wang et al.(2014)
 Peng et al.(2014)
 Lin et al.(2019)
 Yu et al.(2016)

Sex (M/F)
 Age (18-75) [years]

Weight

Co-administration with inducer (Y/N)

Co-administration with VPA (Y/N)

Co-administration with LEV or LTG (Y/N)

Dose (75-1350) [mg/d]

eGFR (20-120) [ml/min]

ALT (50-149) [U/L]

Children (16-40) [kg]

Both children and adults (16-100) [kg]

Adults (40-100) [kg]

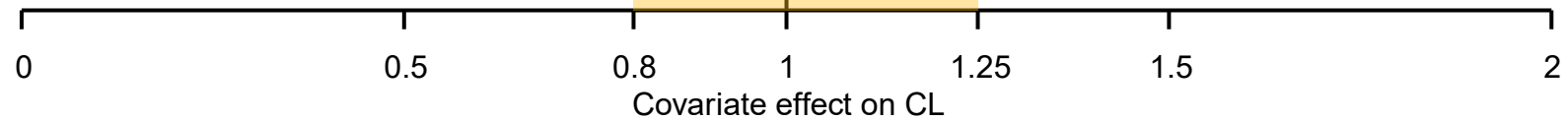


Table 1 ClinPK checklist of information to be included when reporting a clinical pharmacokinetic study.

Authors and Items	Northam et al. (2005)	Park et al. (2012)	Wegner et al. (2013)	Peng et al. (2014)	Wang et al. (2014)	Sugiyama et al. (2015)	Yu et al. (2016)	Antunes et al. (2017)	Rodrigues et al. (2017)	Chen et al. (2019)	Lin et al. (2019)	Lin et al. (2019)	Compliance rate (%)
Title/abstract													
drug and patient population	+	+	+	+	+	+	+	+	+	+	+	+	100
name of the drug(s) studied	+	+	+	+	+	+	+	+	+	+	+	+	100
route of administration	+	+	+	+	+	+	+	+	+	-	+	+	91.7
population studied	+	+	+	+	+	+	+	+	+	+	+	+	100
primary objective	+	+	+	+	+	+	+	+	+	+	+	+	100
major findings	+	+	+	+	+	+	+	+	+	+	+	+	100
Background													
pharmacokinetic data	+	+	+	+	+	+	+	+	+	+	+	+	100
study rationale	+	+	+	+	+	+	+	+	+	+	+	+	100
specific objectives/hypotheses	+	+	+	+	+	+	+	+	+	+	+	+	100
Methods													
eligibility criteria	+	-	+	+	+	+	+	+	+	+	+	+	91.7
co-administration or food	+	+	+	+	+	+	-	+	+	+	+	+	91.7
dosing	-	+	-	+	+	+	+	+	+	+	+	+	83.3
formulation	-	+	+	+	+	+	+	+	+	+	+	+	91.7
sampling schedule	-	-	-	-	+	-	+	-	+	-	-	-	25
bioanalytical methods	+	+	-	+	+	+	+	-	+	+	+	+	83.3

Table1. (Continued)													
Authors and Items	Northam et al. (2005)	Park et al. (2012)	Wegner et al. (2013)	Peng et al. (2014)	Wang et al. (2014)	Sugiyama et al. (2015)	Yu et al. (2016)	Antunes et al. (2017)	Rodrigues et al. (2017)	Chen et al. (2019)	Lin et al. (2019)	Lin et al. (2019)	Compliance rate (%)
schematic of the final model	+	-	+	+	+	+	+	+	+	+	+	+	91.7
No. of subjects and observations	+	+	-	+	+	+	+	+	+	+	+	+	91.7
table of the final model parameters	-	+	+	+	+	+	+	+	+	+	+	+	91.7
final model evaluation plots	+	+	+	+	+	+	+	+	+	+	+	+	100
summary of the model-building process and the derived final model	+	-	+	+	+	+	+	+	+	+	+	+	91.7
plot of concentrations vs. time and/or effects vs. concentrations	+	+	-	+	+	+	+	+	+	+	+	+	91.7
Discussion/conclusion													
study limitations	+	-	-	+	+	-	+	+	-	+	+	+	66.7
study findings	+	+	+	+	+	+	+	+	+	+	+	+	100
Compliance rate (%)	71.4	71.4	68.6	88.6	97.1	91.4	85.7	88.6	94.3	88.6	94.3	94.3	/



 : Meet report requirements (record 1 score);  : Not reported (record zero score);

Table 2. Characteristics of included population pharmacokinetic studies.

Study (publication year)	Country (type of study)	Number of subjects (Male/Female)	Number of observations	Sampling time	Age(years) Mean ± SD Median [Range]	Weight (kg) Mean ± SD Median [Range]	Formulation	Daily Dose Mean ± SD Median [Range]	Bioassay [LOQ]
Northam et al. (2005)	United States (Prospective)	24 (14/10)	82	SS ^b	1.7±1.15 [0.2-3.75]	11.3 ± 3.7 [4.7 - 21.8]	NR	Part I [†] : 44.8 [5.3 – 63.2] mg/kg/d Part I [†] : 46.4 [5.3 – 60.9] mg/kg/d.	HPLC/LC-MS NR
Wegner et al. (2013)	Netherlands (Retrospective)	319/464	NR	NR	NR	NR	tablets	NR	HPLC [0.1 mg/L]
Park et al. (2012)	Korea (Retrospective)	209 (97/112)	254	NR	29.0 [3-80]	62.8 [10.1 - 95.0]	tablets	[945.19 ± 469.84] mg/d	HPLC NR
Wang et al. (2014)	China (Retrospective)	573 (365/208)	1031	NR	7.37±3.6 [0.2-18]	27.64 ± 12.93 [4 - 90]	tablets	[10 – 30] mg/kg/d	HPLC [0.4 mg/L]
Peng et al. (2014)	China (Retrospective)	466 (300 /166)	840	SS ^c	7.39 [0.58 - 17]	27.5 ± 6.5	tablets	[75 -1350] mg/d	HPLC NR
Sugiyama et al. (2015)	multicenter ^a	109 (58/51)	376	SS ^d	11.0±3.9 11 [3-17]	43.3 ± 20.7 [15.9 ± 134.5]	tablets	[300 – 2100] mg/d	HPLC [0.393 mmol/L]
	Japan (Retrospective)	27	88	SS ^e	10.33±2.63 [5-14]	34.46 ± 12.44 [15.3 - 67.5]	tablets	[312 – 1800] mg/d	LC-MS/MS [0.1 mmol/L]
Yu et al. (2016)	China (Retrospective)	78 (54/24)	108	SS ^f	37±21 [4-81]	NR	tablets	[300 – 1350] mg/d	HPLC [0.4 mg/L]
Antunes et al. (2017)	Brazil (Prospective)	12 (4/8)	185	IS ^g	29.50 [22.00–41.00]	61.75 [48.70 -95.15]	tablets	600 mg/d	LC-MS/MS [OXC: 0.04 mg/L MHD:0.02 mg/L]
Rodrigues et al. (2017)	France (Prospective)	31 (18/13)	556	IS ^h	8.08 [2.25 - 12.5]	23 [12.7 - 56]	tablets or suspension	5 or 15 mg/kg/d	HPLC [OXC: 0.05 mg/L MHD: 0.1mg/L]
Chen et al. (2019)	China (Retrospective)	88 (38/50)	91	NR	4.00 [0.17–15.00]	18.50 [5.25 - 66.30]	suspension	26.09 [7.5 - 54.0] mg/kg/d	HPLC [2mg/L]
Lin et al. (2019)	China (Prospective)	141 (90/51)	301	C _{trough}	7.97 ± 3.36 [0.50~14.00]	29.71 ± 12.98 [5.9 - 72.3]	tablets or suspension	618.58 ± 208.23 [120 - 1200] mg/d	EMIT [1.0 mg/L]

Table 2. (Continued)

Study (publication year)	Country (type of study)	Number of subjects (Male/Female)	Number of observations	Sampling time	Age(years) Mean \pm SD Median [Range]	Weight (kg) Mean \pm SD Median [Range]	Formulation	Daily Dose Mean \pm SD Median [Range]	Bioassay [LOQ]
Lin et al. (2019)	China (Prospective)	187 (131/56)	316	C _{trough}	37.1 \pm 16.1 [18.0 - 90.0]	62.0 \pm 10.8 [37.0 - 95.5]	tablets	759 \pm 244 [450 - 2700] mg/d	EMIT [1.0 mg/L]

C_{trough}: trough concentration; EMIT: enzyme multiplied immunoassay technique; HPLC: high-performance liquid; IS: Intensive sampling; LC-MS/MS: liquid chromatograph mass spectrometer or mass spectrometer; LOQ: lower limits of quantification; MHD: monohydroxycarbazepine; NR: not reported; OXC: oxcarbazepine; SS: sparse sampling.

^amulticenter: Argentina, Chile, Uruguay, Australia, New Zealand, Canada, Israel, and the United States.

^bSS: 0 (pre-dose), 0.5, 2, 5-8 h post-dose.

^cSS: 0.5-48 h after dose;

^dSS: at least 1 sample in each of the following intervals: 8 to 11 AM, 11:01 AM to 2 PM, and 2:01 to 6 PM.

^eSS: Sample 1: trough (about 12 h after the last dose), Sample 2: approximately T_{max} (about 4-6 h after administration), Sample 3: initial (around 30 min to 2 h after administration), Sample 4: trough (at another visit than that for the trough sample 1).

^fSS: 0.5–8 h of the dosing interval and C_{trough}.

^gIS: 0 (pre-dose), 0.25, 0.5, 0.75, 1, 1.5, 2, 2.5, 3, 3.5, 4, 5, 6, 8, 10 and 12 h post dose.

^hIS: Part I: 1, 2, 4, 6, 8, 12, 24, 36, and 48 hours post dose.

ⁱPart I: treatment phase.

^jPart II: extension phases.

Table 3. Model strategies and final pharmacokinetic parameters of included studies.

Study (publication year)	Software / Algorithm	Fixed effect parameters	Between-subject variability (%)	residual unexplained variability	Internal validation	External validation (N=number of subjects)	Model application	
Northam et al. (2005)	NONMEM / FO	K_a	0.598	4.9	3.79 mg/L	GOF	NR	
		CL	$2.18 \times (\text{BSA}/1.3)^{1.1} \times 1.27$ (if co-CBZ) $\times 1.27$ (if co-PB) $\times 1.63$ (if co-PHT)	1.8				0.2%
		V	$50.5 \times (\text{HT}/145)^{1.96}$	/				
Park et al. (2012)	NONMEM / FOCE-I	K_a	0.598	/	23.9%	GOF	NR	
		CL	$2.13 \times (\text{WT}/62.8)^{0.666} \times 0.312$ (if co-EIAEDs)	27.7				2.83 mg/L
		V	49	/				
Wegner et al. (2013)	NONMEM / FOCE-I	K_a	1	29	9%	Bootstrap	NR	
		CL	$4.66 \times (\text{WT}/70)^{0.362} \times (\text{Age}/32.8)^{-0.532}$	/				3.8 mg/L
		V	80	/				
Wang et al. (2014)	Phoenix NLME / FOCE L-B	K_a	0.83	39.82	0.93 mg/L	Bootstrap, GOF	N=115	
		CL	$0.035 \times \text{WT} \times 1.11$ (if co-new-AEDs) $\times 0.97$ (if co-VPA) $\times 1.17$ (if co-EIAEDs)	6.89				
		V	$0.67 \times \text{WT}$	19.41				
Peng et al. (2014)	Phoenix NLME / FOCE	K_a	0.6454	/	NR	GOF, VPC, bootstrap,	NR	
		CL	$0.5570 + (\text{Dose}/\text{WT} - 20.8) \times 0.003673$ $- 0.06365$ (if female)	12.0				
		V	$11.33 + (\text{Age} - 7.5) \times 0.02818 + (\text{WT} - 25) \times 0.4022$	6.9				
Sugiyama et al. (2015)	NONMEM / FOCE	K_a	0.406	/	18.3%	VPC, GOF	NR	
		CL	$2.31 \times (\text{WT}/41.57)^{0.555} \times 1.33$ (if co-CBZ) $\times 1.34$ (if co-PB) $\times 1.25$ (if co-PHT)	18.0				
		V	$102 \times (\text{WT}/41.57)^{1.70}$	46.6				
Yu et al. (2016)	Phoenix NLME / FOCE ELS	K_a	0.0833	8.3	NR	Bootstrap, GOF	N=9	
		Tlag	$0.0904 \times \text{Age}^{(-0.144)}$	157.8				
		CL	$2.38 \times (\text{ALT}/30)^{0.181} \times 1.083$ (if female)	22.4				
		V	$14.2 \times (\text{BUN}/4.76)^{(-0.007)} \times (\text{HGB}/140)^{(-0.001)}$	104.4				
Antunes et al. (2017)	NONMEM / FOCE	CL _{MHD}	$2.01 \times (\text{WT}/68)^{0.75}$	9.7	OXC: 9.7%	VPC, NPDE, GOF, PPC	NR	
		V _{MHD-R}	$23.6 \times (\text{WT}/68)$	1.7	MHD: 1.7%			
		V _{MHD-S}	$31.7 \times (\text{WT}/68)$	/				

Table 3. (Continued)

Study (publication year)	Software / Algorithm	Fixed effect parameters		Between-subject variability (%)	residual unexplained variability	Internal validation	External validation (N=number of samples)	Model application
Rodrigues et al. (2017)	Monolix / SAEM	K_a	1.83	/	OXC: 32%	VPC, NPDE, GOF	NR	design dosing regime
		CL_{OXC}	$140 \times (WT/70)^{0.798}$	39.3	MHD:			
		Vc_{OXC}	$337 \times (WT/70)^{2.4}$	60.1	0.993mg/L			
		Q_{OXC}	62.5	91.9	4.0%			
		Vp_{OXC}	60.7	126				
		CL_{MHD}	$4.11 \times (WT/70)^{0.549} \times 0.77$ (if co-EIAEDs)	23.5				
		Vc_{MHD}	$54.8 \times (WT/70)^{1.09}$	21.1				
		KBT	0.0622	63				
Chen et al. (2019)	NONMEM / FOCE-I	K_a	0.598	/	5.12mg/L	Bootstrap, GOF, NPDE, VPC	N=10	design dosing regime
		CL	$3.25 \times (WT/70)^{0.75}$	34.2				
		V	$151.41 \times (WT/70)$	/				
Lin et al. (2019)	NONMEM / FOCE-I	K_a	0.83	11.1	2.992mg/L	GOF, bootstrap	NR	design dosing regime
		CL	$1.68 \times (WT/70)^{0.624-0.233 \times WT^{219}/(8.97^{219} + WT^{219})}$	/				
		V	14.7	/				
Lin et al. (2019)	NONMEM / FOCE-I	K_a	0.46	/	24.5%	GOF, Bootstrap, NPDE	NR	design dosing regime
		CL	$2 \times (WT/70)^{0.46} \times (eGFR/80)^{0.741}$	12.7				
		V	102	58.7				

ALT: alanine aminotransferase (U/L); BUN: blood urea nitrogen (mmol/L); BSA: body surface area (m²); CBZ: carbamazepine; CL: apparent clearance (L/h); CL_{OXC}: the apparent elimination clearances of OXC (L/h); COR: covariance between CL and V; co-X: co-administration with medications; eGFR: the estimated glomerular filtration rate (ml/min); EIAEDs: Enzyme-inducing antiepileptic drug; F: bioavailability; FOCE: first order conditional estimation; FOCE-I: first-order conditional estimation with the interaction; FOCE ELS: first-order conditional estimation method with the η-ε interaction option; FOCE L-B: first-order conditional estimation method with the η-ε interaction option; GOF: goodness-of-fit plot; Ka: absorption rate constant (h⁻¹); HGB: hemoglobin (g/L); HT: height (cm); KBT: the back-transformation constant rate of MHD into OXC (h⁻¹); NR: not reported; new-AEDs: newer antiepileptic drug such as levetiracetam, lamotrigine; NPDE: normalized prediction distribution errors; PB: phenobarbital; PHT: phenytoin; PPC: posterior predictive check; Q_{OXC}: the apparent distribution clearances of OXC; SAEM: stochastic approximation expectation maximization; Tlag: absorption lag time (h); Vc_{OXC}: the apparent central distribution volumes of OXC (L); Vd: apparent volume of distribution (L); Vp_{OXC}: the apparent peripheral distribution volumes of OXC (L); VPA: valproic acid; VPC: visual predictive check. WT: Weight (kg);