

Title: Negative Excess Mortality in Pneumonia Death caused by COVID-19 in Japan

Junko Kurita¹, Tamie Sugawara², Yoshiyuki Sugishita², Yasushi Ohkusa²

¹ Department of Nursing, Tokiwa University, Ibaraki, Japan

² Infectious Disease Surveillance Center, National Institute of Infectious Diseases,
Shinjuku, Tokyo, Japan

*¹ Correspondence to:

Infectious Disease Surveillance Center, National Institute of Infectious Diseases, 1-23-1

Toyama, Shinjuku-ku, Tokyo 162-8640, Japan

Tamie Sugawara tammy@nih.go.jp

ICMJE Statement

Contributors YS was responsible for the organization and coordination of the study. JK was the chief investigator and responsible for the data setting. YO developed the estimation model and TS illustration the results. All authors contributed to the writing of the final manuscript.

Keywords: COVID-19; NIID model; negative excess mortality; pneumonia; stochastic frontier estimation

Abstract

Background: Since the emergence of COVID-19, cases of excess mortality from all causes have been very few in Japan.

Object: To evaluate COVID-19 effects precisely, we specifically examine deaths caused by pneumonia and examine excess mortality attributable to pneumonia in Japan.

Method: We applied the NIID model to pneumonia deaths from 2005 up through August, 2020 for the whole of Japan. Introduction of routine pneumococcal vaccination for elderly people and revision in ICD10 were incorporated into the estimation model.

Results: No excess mortality was found for 2020. However, negative excess mortality was observed as 178 in May, 314 in June, and 75 in July.

Discussion and Conclusion: Significantly negative excess mortality might reflect precautions taken by people including wearing masks, washing hands with alcohol, and maintaining social distance. They reduced the infection risk not only of for COVID-19 but also of other infectious diseases causing pneumonia.

1. Introduction

Since the emergence of COVID-19, excess mortality from all causes has been low in Japan [1]. Actually, data obtained throughout Japan show 12 and 104 cases of excess mortality in August and October, 2020. These very few cases of excess mortality in Japan might be attributable to the lower number of traffic accidents from voluntary restrictions against going out. Therefore, we specifically examine deaths caused by pneumonia for precise evaluation of COVID-19 effects on Japan. The present study examines excess mortality attributable to pneumonia in Japan in 2020.

Regarding pneumonia deaths, two points can be ignored among all causes of death. The first point is pneumococcal vaccine for elderly people. In Japan, routine immunization was introduced in October, 2015. We can expect continuous declines in pneumonia deaths.

The second point is a change in International Classification of Diseases ver. 10 (ICD10) from the 2003 version to the 2013 version. In Japan, the switch occurred in 2018. The number of pneumonia deaths was expected to be reduced by 20% [2]. Therefore, those points are incorporated into the model for excess mortality related to pneumonia deaths.

2. Method

The procedure of estimation was almost identical to that used for an earlier study [1], except for some points. Excess mortality was defined as the difference between the actual number of deaths and an epidemiological threshold if the actual number of deaths was larger than an epidemiological threshold. The epidemiological threshold is defined

as the upper bound of the 95% confidence interval (CI) of the baseline. The baseline is defined as the number of deaths which are likely to have occurred if an influenza outbreak had not occurred. Therefore, if the actual deaths were fewer than the epidemiological threshold, then excess mortality was not inferred. Also, we defined negative excess mortality as the difference between the actual number of deaths and the lower bound of 95% CI if the actual number of deaths was less than the lower bound of 95% CI.

The data used for this study were monthly deaths of all causes reported from 2005 through August 2020 [3]. The NIID model, the Stochastic Frontier Estimation [4–10], is presented as

$$\log D_t = \alpha + \beta T_t + \gamma T_t^2 + \theta V_t + \lambda V_t T_t + \varphi C_t + \xi C_t T_t + \sum \eta_i M_{it} + \varepsilon_t \quad (1)$$

and

$$\varepsilon_t = \nu_t + |\omega_t|, \quad (2)$$

where D_t represents pneumonia deaths in month/year t , T_t denotes the linear time trend, V_t is a dummy variable for routine pneumococcal vaccination, C_t is a dummy variable for revision in ICD10, and M_{it} is a dummy variable for the month. That is, V_t is one after

October, 2014 and otherwise zero. C_t is one after 2018 and otherwise zero. M_{it} is one if t is the i -th month and otherwise zero. Moreover, v_t and ω_t are stochastic variables as $v_t \sim N(0, \mu^2)$ and $\omega_t \sim N(0, \xi^2)$; they are mutually independent. Although v_t represents stochastic disturbances, ω_t denotes non-negative deaths attributable to influenza. These disturbance terms in this model are parameterized by two parameters: ξ/μ and $(\mu^2 + \xi^2)^{0.5}$. If the null hypothesis $\xi/\mu=0$ is not rejected, then the Stochastic Frontier Estimation model is inappropriate.

The study area was the entire nation of Japan. The study period for estimation was 2005 through August 2020. We adopted 5% as the level at which significance was inferred for results. Pneumonia is defined as J12–J18 in ICD10.

3. Results

Because the estimated coefficients of the cross term of routine vaccination initiation and time trend, the ICD10 revision dummy, and the cross term of ICD10 revision and time trend were not found to be significant, we dropped these terms from the estimation equation (1). Table 1 presents estimation results without these variables. The estimated coefficients of ICD10 revision and its cross term with the time trend were not significant. Moreover, although the estimated coefficients of routine pneumococcal vaccination for elderly were significant, its cross term with a time trend was not significant.

Figure 1 presents observed deaths, the estimated baseline, and its threshold based

on the model including insignificant terms. Figure 2 specifically depicts the last 12 months in Japan. We found no excess mortality in 2020. In fact, we observed negative excess mortality as 178 in May, 314 in June, and 75 in July.

4. Discussion

This study applied the NIID model to pneumonia deaths to detect excess mortality attributable to COVID-19. No excess mortality was found in 2020, but 1074 negative excess mortality cases were identified in the last three months. Its volume was about 3.1% of the baseline in the corresponding period.

Throughout Japan, about 4000 cases of mortality caused by COVID-19, as confirmed by PCR testing, were reported to the MHLW officially as of December [12]. Therefore, even if COVID-19 actually caused external mortality, neither the NIID model nor another statistical model would detect significant effects attributable to COVID-19. Of course, it is possible that some deaths caused by COVID-19 had been classified as pneumonia deaths.

Even so, COVID-19 is associated with significantly reduced pneumonia mortality in May, June, and July, in Japan. The result was not attributable to the wide spread of pneumococcal vaccination or revision in ICD10 because some excess mortality was found in 2019. Results suggest that precautions among people, including wearing masks, washing hands with alcohol, and maintaining social distance reduced the infection risk

not only of COVID-19 but of other infectious diseases causing pneumonia. Therefore, pneumonia deaths decreased, completely offsetting the COVID-19 effects.

Some researchers in Japan have emphasized considerable excess mortality from all causes of death through May of around six thousand because of COVID-19 [11] when using the Farrington algorithm [12] and EuroMOMO [13]. However, nationwide, we found only 13 cases of excess mortality in August. In fact, results showed that the observations were less than the baseline nationwide through May. However, earlier studies have used figures from prefectures where excess mortalities had been found and extrapolated the results to indicate six thousand cases of excess mortality nationwide. Therefore, those excess mortality findings for Japan have misjudged the risk participation for COVID-19 among the general population.

The effect of ICD10 revision was not significant at all. It is probably attributable to overlapping of its period with routine pneumococcal vaccination. In other words, its effect was not so great if one incorporates vaccination effects into the estimation model. Moreover, the cross-term of vaccination with the time trend was not significant, although Figure 1 presents a clear decrease in the number of pneumonia deaths. That result is probably attributable to the significant negative square term of the time trend. Actually, before 2015, the increasing pace was decreasing gradually and almost flat in

2013 or 2014. It might be reflected by the gradual spread of pneumococcal vaccine before routine immunization was introduced. Therefore, the negative time trend squared might be explained already by the decrease since 2015.

The present study has some limitations. First, our results reflected data through August, 2020 when the outbreak of COVID-19 was not severe. Subsequently, and especially in winter, a severer COVID-19 outbreak emerged. Negative excess mortality from pneumonia deaths might disappear. Continuous monitoring is expected to be necessary.

Second, by rules governing the determination of the cause of death, some cases of death attributable to COVID-19 were not classified as pneumonia or as COVID-19 infection. The rule for cause of death requires classification by the most fundamental cause. For example, if cancer patients were infected by COVID-19, but then showed pneumonia and died, their proximate cause of death was probably cancer, and not COVID-19 or pneumonia. Therefore, some fraction of negative excess mortality by pneumonia might be classified as caused by other than pneumonia. However, even for periods when deaths of all causes in some months were fewer than the baseline, but not significantly in 2020 [1], the total deaths during the entire COVID-19 outbreak period were fewer than the usual level.

Thirdly, similarly to the point raised earlier, if a healthy person was presumed to be infected with COVID-19, then showed pneumonia, and finally died, then the cause of death should be classified as COVID-19, or as U07.1, for an identified virus or as U07.12 for an unidentified virus under ICD10. Conversely, for a case in which a healthy person tested positive for COVID-19, showed pneumonia, and died, but who was not presumed to be infected by COVID-19, the cause of death should be classified as pneumonia. Therefore, negative excess mortality related to pneumonia does not necessarily represent negative excess mortality of COVID-19 itself.

5. Conclusion

We found no excess mortality in 2020, but 1074 cases of negative excess mortality during the last three months. Continued careful monitoring of excess mortality of COVID-19 is expected to be important.

The present study is based on the authors' opinions: it does not reflect any stance or policy of their professionally affiliated bodies.

6. Acknowledgement

We acknowledge Dr. Nobuhiko Okabe, Kawasaki City Institute for Public Health, Dr. Kiyosu Taniguchi, National Hospital Organization Mie National Hospital, and Dr. Nahoko Shindo, WHO for their helpful support.

7. Conflict of interest

The authors have no conflict of interest to declare.

8. Ethical considerations

All information used for this study was published on the web site of MHLW [12].

Therefore, no ethical issue is presented.

9. References

- 1) Kurita J, Sugawara T, Sugishita Y, Ohkusa Y. Few Excess Mortality in Japan in August and October, 2020 since January, 2020. <https://www.medrxiv.org/content/10.1101/2020.07.09.20143164v9.article-info>
- 2) Ministry of Health, Labour and Welfare. Effect of revision in ICD10 to mortality statistics. https://www.mhlw.go.jp/toukei/list/dl/icd_2013_eikyo.pdf (in Japanese) [accessed on December 26, 2020]
- 3) Ministry of Health, Labour and Welfare. Preliminary statistics on demographics <https://www.mhlw.go.jp/toukei/list/81-1a.html> (in Japanese) [accessed on December 26, 2020]
- 4) Aiger AD, Lovell K, Schmitdt P. Formulation and estimation of stochastic frontier production function models. *Journal of Econometrics* 1977; 21-37.
- 5) Jondrow J, Lovell K, Materov S, Schmidt P. On the estimation of technical inefficiency in the stochastic frontier production function model. *Journal of Econometrics* 1982; 233-9.

- 6) Li T, Rosenman R. Cost inefficiency in Washington Hospitals: A stochastic frontier approach using panel data, *Health Care Management Science* 2001; 4: 73-81.
- 7) Newhouse JP. Frontier Estimation: How useful a tool for health economics? *Journal of Health Economics* 1994; 13: 317-22.
- 8) Shelton Brown H. Managed care and technical efficiency. *Health Economics*. 2003; 12: 149-58.
- 9) Jacobs R. Alternative methods to examine hospital efficiency: Data envelopment analysis and stochastic frontier analysis. *Health Care Management Science*. 2001; 4: 103-15
- 10) Rosko MD. Cost efficiency of US hospitals: A stochastic frontier approach. *Health Economics*. 2001; 539-51.
- 11) National Institute of Infectious Diseases, Excess mortality in Japan, on August 2020.
<https://www.niid.go.jp/niid/ja/from-idsc/493-guidelines/9835-excess-mortality-20aug.html> (in Japanese) [accessed on September 7, 2020]
- 12) Center of Disease Control and Prevention, Excess Deaths Associated with COVID-19 <https://data.cdc.gov/NCHS/Excess-Deaths-Associated-with-COVID-19/xkkf-xrst> [accessed on September 7, 2020]
- 13) EUROMOMO,EUROMOMO, <https://www.euromomo.eu/> [accessed on

September 7, 2020]

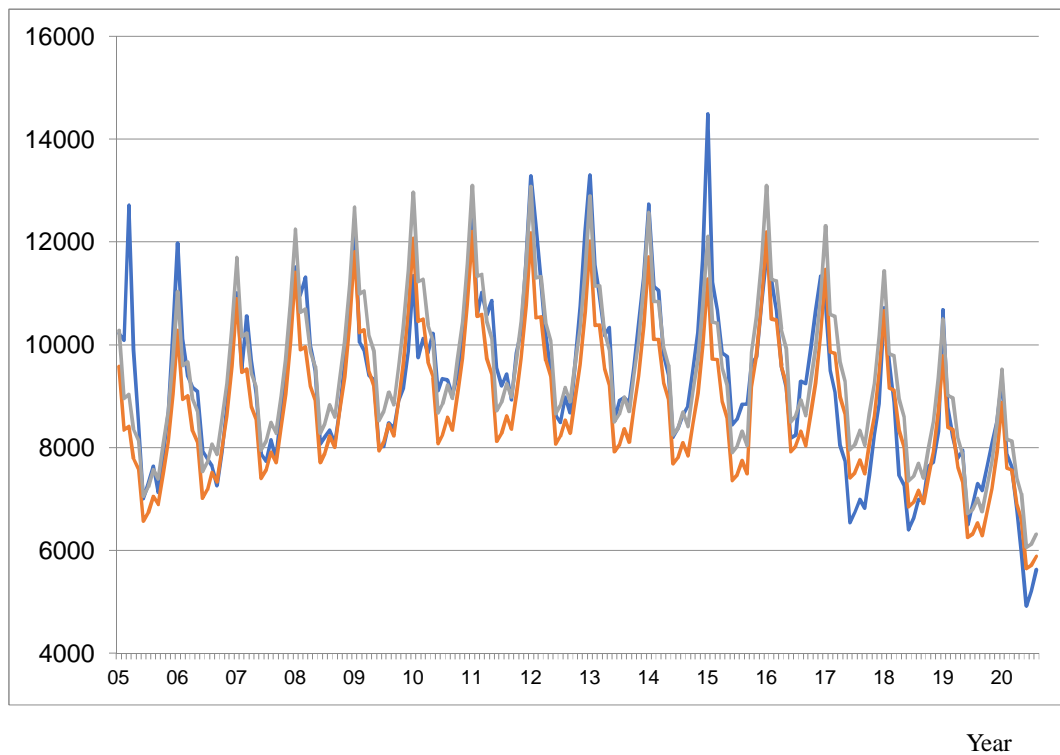
Table 1 NIID Model estimation results for pneumonia death from 2005 through August 2020 in Japan

Explanatory variable	Estimated coefficient	<i>p</i> -value
Constant	9.0377	< 0.0004
Time trend	0.006438	< 0.0004
Time trend ²	-0.0000162	< 0.0004
Vaccination	0.1279	< 0.0004
January	0.1233	< 0.0004
February	-0.02197	0.189
March	-0.01030	0.303
April	-0.1029	< 0.0004
May	-0.1352	< 0.0004
June	-0.2846	< 0.0004
July	-0.2653	< 0.0004
August	-0.2257	< 0.0004
September	-0.2548	< 0.0004
October	-0.1749	< 0.0004
November	-0.1028	< 0.0004
ξ/μ	2.085	< 0.0004
$(\mu^2 + \xi^2)^{0.5}$	0.08992	< 0.0004

Note: The observations were 188. The log likelihood was 319.594. ξ^2 denotes the variance of the non-negative disturbance term. μ^2 represents the variance of the disturbance term. “Vaccination” is a dummy variable for routine pneumococcal vaccination: one after October 2014 and zero otherwise.

Figure 1: Observations of the estimated baseline and threshold for pneumonia deaths from 2005 through August 2020 in Japan

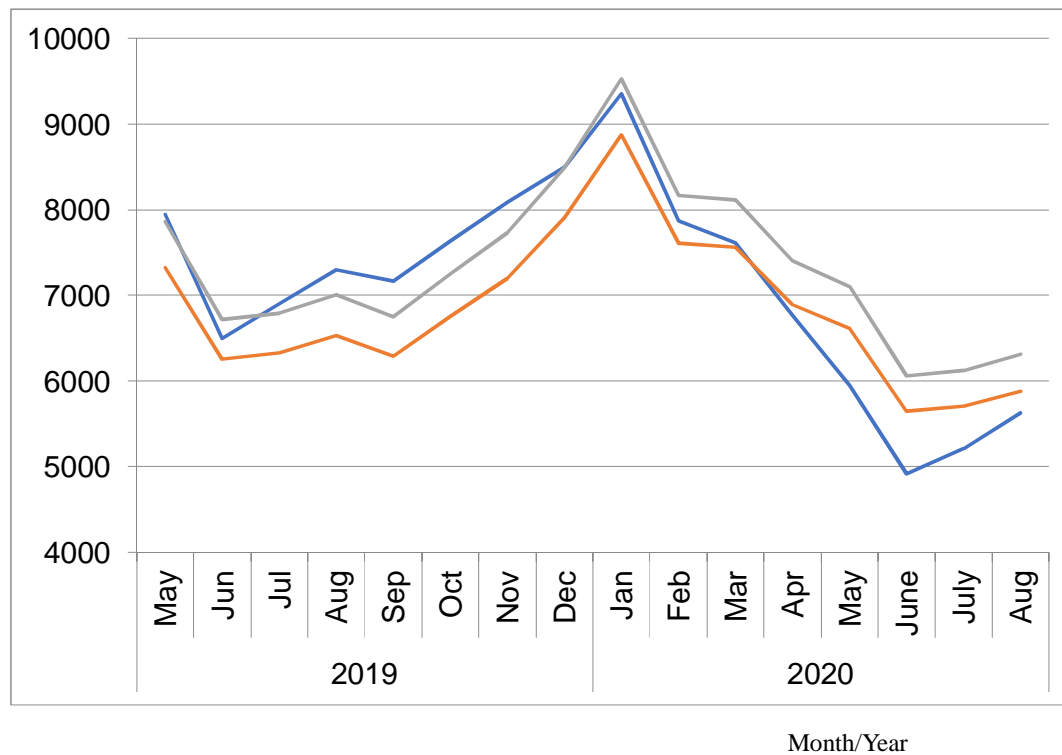
(persons)



Note: The blue line represents observations. The orange line represents the estimated baseline. The gray line shows its threshold.

Figure 2: Observations of the estimated baseline and threshold for pneumonia deaths since May 2019 in Japan

(persons)



Note: The blue line represents observations. The orange line represents the estimated baseline. The gray line shows its threshold.