

## Endothelial cell-activating antibodies in COVID-19

Hui Shi<sup>1,2</sup>, Yu Zuo<sup>1</sup>, Sherwin Navaz<sup>1</sup>, Alyssa Harbaugh<sup>1</sup>, Claire K. Hoy<sup>1</sup>, Alex A. Gandhi<sup>1</sup>, Gautam Sule<sup>1</sup>, Srilakshmi Yalavarthi<sup>1</sup>, Kelsey Gockman<sup>1</sup>, Jacqueline A. Madison<sup>1</sup>, Jintao Wang<sup>3</sup>, Melanie Zuo<sup>4</sup>, Yue Shi<sup>5</sup>, Michael D. Maile<sup>6,7</sup>, Jason S. Knight<sup>1‡</sup>, and Yogendra Kanthi<sup>3,8‡</sup>

‡ Jason S. Knight and Yogendra Kanthi are co-corresponding authors

### Affiliations

<sup>1</sup> Division of Rheumatology, Department of Internal Medicine, University of Michigan, Ann Arbor, Michigan, USA

<sup>2</sup> Division of Rheumatology, Ruijin Hospital, Shanghai Jiao Tong University School of Medicine, Shanghai, China

<sup>3</sup> Division of Intramural Research National Heart, Lung and Blood Institute Bethesda, Maryland, USA

<sup>4</sup> Division of Geriatric and Palliative Medicine, Department of Internal Medicine, University of Michigan, Ann Arbor, Michigan, USA

<sup>5</sup> School of Kinesiology, Shanghai University of Sport, Shanghai, China

<sup>6</sup> Department of Anesthesiology, University of Michigan, Ann Arbor, Michigan, USA

<sup>7</sup> Michigan Center for Integrative Research in Critical Care, University of Michigan, Ann Arbor, Michigan, USA

<sup>8</sup> Division of Cardiovascular Medicine, Department of Internal Medicine, University of Michigan, Ann Arbor, Michigan, USA.

**Correspondence:** Jason S. Knight, MD, PhD ([jsknight@umich.edu](mailto:jsknight@umich.edu)) and Yogendra Kanthi, MD ([yogen.kanthi@nih.gov](mailto:yogen.kanthi@nih.gov))

**Competing interests:** YK is an inventor on an unrelated pending patent to the University of Michigan (US20180369278A1). The remaining authors have no competing interests.

**Contributors:** HS, YZ, SN, AH, CH, AAG, GS, SY, KG, JAM, JW, MZ, and YS conducted experiments and analyzed data. HS, YZ, MDM, JSK, and YK conceived the study and analyzed data. All authors participated in writing the manuscript and gave approval before submission.

**Funding:** The work was supported by a grant from the Rheumatology Research Foundation to JSK and grants from the Michigan Medicine Frankel Cardiovascular Center and A. Alfred Taubman Medical Research Institute to YK and JSK. YZ was supported by a career development grant from the Rheumatology Research Foundation and a grant from the Arthritis National Research Foundation. JAM was partially supported by the VA Healthcare System. JSK was supported by grants from the NIH (R01HL115138), Burroughs Wellcome Fund, and Lupus Research Alliance. YK was supported by the Intramural Research Program of the NIH and NHLBI, Lasker Foundation, and the Falk Medical Research Trust Catalyst Award.

**Patient and public involvement:** Patients and the public were not involved in design, conduct, reporting, or dissemination of this research.

**Patient consent for publication:** N/A

**Ethics approval:** This study complied with all relevant ethical regulations, and was approved by the University of Michigan Institutional Review Board (HUM00179409 and HUM00131596).

**Data availability statement:** All data relevant to the study are included in the article or uploaded as online supplemental information.

## **ABSTRACT**

Endothelial dysfunction has been implicated in the widespread thrombo-inflammatory complications of coronavirus disease-19 (**COVID-19**), although the upstream mediators of endotheliopathy remain cryptic. Using sera or plasma from 244 patients hospitalized with COVID-19, we demonstrate that autoantibodies, specifically those from patients with circulating antiphospholipid antibodies activate cultured endothelium. Sera and plasma from patients with COVID-19, and to a lesser extent from patients with sepsis, increased surface expression of cell adhesion molecules. The presence of circulating antiphospholipid antibodies was a strong marker of the ability of COVID-19 serum to activate endothelium. Depletion of total IgG from antiphospholipid antibody-positive sera markedly restrained upregulation of cell adhesion molecules. Conversely, supplementation of control serum with patient IgG was sufficient to trigger endothelial activation. These data are the first to suggest that some patients with COVID-19 have potentially diverse antibodies that drive endotheliopathy, adding important context regarding thrombo-inflammatory effects of autoantibodies in severe COVID-19.

**Keywords:** COVID-19, autoantibodies, antiphospholipid antibodies, endothelial cells, cell adhesion

## INTRODUCTION

There are several likely synergistic mechanisms by which SARS-CoV-2 infection may result in COVID-19-associated coagulopathy including cytokine release that activates leukocytes, endothelium, and platelets; direct activation of various cells by viral infection; and high levels of intravascular neutrophil extracellular traps (**NETs**) (Shi *et al*, 2021; Zuo *et al*, 2020b). The latter are inflammatory cell remnants that amplify thrombosis (Leppkes *et al*, 2020; Middleton *et al*, 2020; Nicolai *et al*, 2020). COVID-19-associated coagulopathy may manifest with thrombosis in venous, arterial, and microvascular circuits. The incidence of venous thromboembolism is particularly notable in severe COVID-19 (10% to 35%) with autopsy series suggesting that as many as 60% of those who succumb to COVID-19 are impacted (Conway & Pryzdial, 2020; Wichmann *et al*, 2020).

Recently, there have been a number of descriptions of what appears to be *a priori* autoantibody formation in individuals with moderate-to-severe COVID-19. One example replicated by multiple groups is the detection of antiphospholipid antibodies (**aPL**), which mediate antiphospholipid syndrome (**APS**) in the general population. In APS, patients form durable autoantibodies to phospholipids and phospholipid-binding proteins such as prothrombin and beta-2-glycoprotein I ( **$\beta_2$ GPI**). These autoantibodies then engage cell surfaces, where they activate endothelial cells, platelets, and neutrophils (Yalavarthi *et al*, 2015) and thereby tip the blood:vessel wall interface toward thrombosis. While viral infections have long been known to trigger transient aPL (Abdel-Wahab *et al*, 2016; Abdel-Wahab *et al*, 2018; Asherson & Cervera, 1994; Sung & Anjum, 2020), mechanisms by which these potentially short-lived antibodies may be pathogenic have never been characterized. To this end, our group recently found that COVID-19 IgG fractions enriched for aPL potentiated thrombosis when injected into mice (Zuo *et al*, 2020a). Intriguingly, the circulating B cell compartment in COVID-19 appears reminiscent of the autoimmune disease lupus whereby naïve B cells rapidly take an extrafollicular route to becoming antibody-producing cells (Woodruff *et al*, 2020), and in doing so bypass the normal tolerance checkpoints against autoimmunity provided by the germinal center.

Here, we were initially interested in the extent to which circulating NET remnants might be an important activator of endothelial cells. We then also necessarily turned our attention to aPL as markers of COVID-19 serum and polyclonal IgG fractions with strong endothelial cell activating-potential.

## **MATERIALS AND METHODS**

Detailed Methods are provided in the Supplemental Methods. This study complied with all relevant ethical regulations, and was approved by the University of Michigan Institutional Review Board (HUM00179409 and HUM00131596).

**Serum samples from patients with COVID-19.** Blood was collected into serum separator tubes containing clot activator and serum separator gel by a trained hospital phlebotomist. After completion of biochemical testing ordered by the clinician, the samples were released to the research laboratory. Serum samples were immediately divided into small aliquots and stored at -80°C until the time of testing. All 118 patients in the primary cohort and 126 patients in the expansion cohort had a confirmed COVID-19 diagnosis based on U.S. Food and Drug Administration (FDA)-approved RNA testing.

## RESULTS

**Activation of HUVEC by COVID-19 serum.** Serum samples were collected from 118 patients hospitalized with moderate-to-severe COVID-19 at an academic hospital. The average age of this cohort was 62, while 47% were female and 42% were Black/African American (**Supplemental Table 1**); 35% were receiving mechanical ventilation. Serum from the COVID-19 patients was added to early-passage human umbilical vein endothelial cells (**HUVEC**), and the expression of cell adhesion molecules was determined after 6 hours via a custom in-cell ELISA compatible with the Biosafety Level-3 facility per institutional guidelines (**Figure 1A**). As compared with serum samples from 38 healthy controls, the COVID-19 samples triggered an activated endothelial cell phenotype as evidenced by markedly increased surface expression of the cell adhesion molecules E-selectin (**Figure 1B, Supplemental Figure 1A**), VCAM-1 (**Figure 1C, Supplemental Figure 1B**), and ICAM-1 (**Figure 1D, Supplemental Figure 1C**). We were able to obtain sufficient sera from an additional 126 hospitalized COVID-19 patients to expand the ICAM-1 testing. These patients had a similar profile to the original 118 patients as shown in **Supplementary Table 1**. Considering all 244 patients together, sera from patients requiring mechanical ventilation upregulated ICAM-1 more strongly than did sera from patients who were hospitalized but not requiring mechanical ventilation ( $p < 0.01$ , **Figure 1E**). We also measured levels of soluble E-selectin in patient serum. We found significantly higher levels of soluble E-selectin in COVID-19 serum as compared with healthy controls (**Figure 1F**). Soluble E-selectin demonstrated a positive correlation with HUVEC E-selectin expression (**Figure 1G**), as well as with clinical parameters that track with COVID-19 severity including C reactive protein, D-dimer, calprotectin, and oxygenation efficiency (**Supplemental Figure 2**).

To determine the extent to which this phenomenon might extend to critically ill patients without COVID-19, we matched 100 intensive care unit sepsis patients (plasma obtained in the pre-COVID era) to our COVID-19 cohort ( $n=72$  plasma samples available) by age and comorbidities (**Supplemental Table 2**). More patients in the sepsis cohort required mechanical ventilation (65% versus 46%). We then stimulated HUVEC with plasma and determined the surface expression of ICAM-1. While sepsis plasma elicited higher expression of surface ICAM-1 than did control plasma, the effect was even more robust with COVID-19 plasma (**Figure 1H**). Taken together, these data indicate that COVID-19 serum and plasma contain factors capable of activating endothelial cells.

**Association of NET remnants and other biomarkers with the endothelial cell-activating potential of COVID-19 serum.** Given that NETs are known activators of endothelial cells, we asked whether NET remnants might predict the ability of a particular COVID-19 serum sample to upregulate surface E-selectin, VCAM-1, and ICAM-1. Specifically, we measured NETs in COVID-19 serum (n=118) via quantification of cell-free DNA, myeloperoxidase (MPO)-DNA complexes, and citrullinated histone H3 (**Cit-H3**) (**Supplemental Table 3**). Serum MPO-DNA complexes demonstrated a modest correlation with surface expression of both VCAM-1 ( $r=0.26$ ,  $p<0.01$ ) and ICAM-1 ( $r=0.28$ ,  $p<0.01$ ). Cell-free DNA and Cit-H3 both correlated with VCAM-1 only ( $r=0.24$ ,  $p<0.05$  and  $r=0.22$ ,  $p<0.05$ , respectively) (**Supplemental Table 3**). Beyond these relatively specific markers of NETs, we also sought correlations with more general markers of thrombo-inflammation including C-reactive protein, D-dimer, and calprotectin, the latter having been previously shown to be an early predictor of respiratory failure in COVID (Shi *et al.*, 2021; Silvin *et al.*, 2020). Of the three, only calprotectin demonstrated positive correlations with expression of all three endothelial cell surface markers ( $r=0.19-0.20$ ,  $p<0.05$ ), while D-dimer correlated with ICAM-1 only ( $r=0.26$ ,  $p<0.05$ ) (**Table 1**). Taken together, these data demonstrate modest correlations between NETs/thrombo-inflammation and the ability of COVID-19 serum to activate endothelial cells.

**Association of aPL with the endothelial cell-activating potential of COVID-19 serum.** We next reasoned that COVID-19-associated autoreactive antibodies might activate endothelial cells. In pursuit of antibody fractions that might activate HUVEC, we focused on the IgG and IgM isotypes of three types of aPL: anticardiolipin, anti- $\beta_2$ GPI, and anti-phosphatidylserine/prothrombin (**anti-PS/PT**). As is detailed in **Supplemental Table 4**, 45% of subjects were positive for at least one antibody based on the manufacturer's cutoff and 25% were positive with a more stringent cutoff of  $\geq 40$  units. The vast majority of positive results were either anticardiolipin (IgG=3% and IgM=25% of cohort, respectively) or anti-PS/PT (IgG=24% and IgM=15% of cohort, respectively). None of the aPL were regularly detected in the healthy control serum (2 positive tests) and plasma (1 positive test) used in this study (**Supplemental Tables 5 and 6**). Interestingly, we detected strong correlations between anticardiolipin and anti-PS/PT antibodies and the three markers of endothelial cell activation (E-selectin, VCAM-1, and ICAM-1) (**Table 1**). The only correlation that was not statistically significant was between anti-PS/PT IgM and VCAM-1 (**Table 1**). We also measured the same aPL in the aforementioned sepsis cohort (**Supplemental Table 7**). Of the 100 patients, 29 were positive for any aPL with 23 positive at the more stringent cutoff of  $\geq 40$  units. In contrast to the COVID-19 cohort, the vast

majority of positive tests were for anti-PS/PT IgM, the levels of which demonstrated a correlation with the ability of plasma to upregulate ICAM-1 ( $r=0.29$ ,  $p<0.01$ , **Supplementary Table 8**). In summary, we detected correlations between various aPL and endothelial cell activation in COVID-19, and to some extent in sepsis.

**Increased neutrophil adhesion upon serum-mediated HUVEC activation.** To determine whether upregulation of E-selectin, VCAM-1, and ICAM-1 is associated with increased adhesive functions of HUVEC, we performed a neutrophil adhesion assay. We pooled serum from three COVID-19 patients with positive anticardiolipin IgG and separately five COVID-19 patients with positive anti-PS/PT IgG activity. We then stimulated HUVEC with the pooled sera. Compared with control serum, both COVID samples significantly increased adhesion of neutrophils to endothelial cells (**Figure 2A**).

**Depletion of IgG alleviates HUVEC activation.** We next sought to prove or disprove whether total IgG fractions from COVID-19 patients could directly activate HUVEC. To this end, we subjected the aforementioned pooled sera (anticardiolipin IgG-positive and anti-PS/PT IgG-positive) to either mock or IgG depletion. IgG depletion did not result in significant removal of other serum proteins of note such as calprotectin (**Supplemental Figure 3**). As compared with mock depletion, total IgG depletion completely abrogated the ability of both pooled samples to upregulate endothelial cell E-selectin (**Figure 2B**), VCAM-1 (**Figure 2C**) and ICAM-1 (**Figure 2D**). We next purified total IgG from each pool and added it to control serum that had been depleted of its own IgG. The COVID-19 IgG-supplemented control serum now demonstrated an ability to increase expression of surface ICAM-1 (**Figure 2E**). In contrast, IgG purified from COVID-19 serum negative for both anticardiolipin and anti-PS/PT IgG did not increase expression of ICAM-1 (**Supplemental Figure 4**). Taken together, these data indicate that the presence of aPL correlates with COVID-19 IgG samples that can activate endothelial cells.



## DISCUSSION

Here, we report that sera from COVID-19 patients activate cultured endothelial cells to express surface adhesion molecules integral to inflammation and thrombosis, namely E-selectin, VCAM-1, and ICAM-1. Furthermore, we found that for at least a subset of serum samples from patients with COVID-19, this activation could be mitigated by depleting total IgG. The role of aPL in activating endothelial cells has been demonstrated both *in vitro* and *in vivo* (Pierangeli *et al*, 1999). For example, IgG fractions from APS patients have long been known to activate HUVEC, as reflected by increased monocyte adherence and expression of adhesion molecules (Simantov *et al*, 1995). It must be emphasized that most characterization of endothelium in the APS field has focused especially on activation of the endothelium by anti- $\beta_2$ GPI antibodies (Allen *et al*, 2012), which were only rarely detectable in our cohort. Having said that, interesting recent work demonstrates the ability of phospholipid-binding, “cofactor-independent” antibodies to also activate endothelium in APS (Müller-Calleja *et al*, 2021). Of course, it should be noted that all experiments performed here were with total IgG fractions and not affinity-purified aPL. Therefore, aPL may mark antibody profiles, quite possibly polyclonal, that activate endothelium. In addition to our findings, several other groups have also provided evidence for the a priori formation of pathogenic autoantibodies in COVID-19 (Chang *et al*, 2021). For example, an interesting study used a high-throughput autoantibody discovery technique to screen a cohort of COVID-19 patients for autoantibodies against 2,770 extracellular and secreted proteins (Wang *et al*, 2021). The authors found a tendency for autoantibodies to be directed against immunomodulatory proteins including cytokines, chemokines, complement components, and cell surface proteins.

Beyond COVID-19, it was quite interesting to find that approximately one-quarter of sepsis patients had at least one positive aPL test, mostly anti-PS/PT IgM. Given that anti-PS/PT IgM levels tracked with the ability of plasma to activate endothelial cells, we posit that a similar autoreactive antibody-mediated, endothelial cell-activating mechanism may occur in some patients with sepsis, a state in which infection and the host immune response conspire to perturb the vasculature (Colling *et al*, 2021). Of particular note, infections causing critical illness have long been known to be potential triggers of autoantibodies, and in particular aPL (Abdel-Wahab *et al*, 2016; Abdel-Wahab *et al*, 2018; Asherson & Cervera, 1994; Wenzel *et al*, 2002). Although infection-associated aPL have typically been described as transient (Abdel-Wahab *et al*, 2016; Asherson & Cervera, 2003; Blank *et al*, 2004), a recent systematic review found that one-third of individuals found to have positive aPL in the setting of a virus-associated thrombotic

event continue to have durably-positive aPL for at least several months (Abdel-Wahab *et al.*, 2016). Based on our data, long-term clinical and serological follow-up of patients may be necessary to better define the natural history of COVID-19 and non-COVID sepsis.

There are several potential clinical implications of our findings. A consideration that warrants further investigation is whether patients with moderate-to-severe COVID-19 should be screened for aPL to evaluate their risk of thrombosis and progression to respiratory failure, and whether patients with high aPL titers might benefit from treatments used in traditional cases of severe APS such as therapeutic anticoagulation, complement inhibition, and plasmapheresis. Having said that, whether aPL are direct mediators of the endothelial cell phenotypes observed here, or perhaps highlight polyclonal antibody fractions likely to activate endothelial cells, is an important question deserving of future research. This study has additional limitations including a lack of a direct readout of macrovascular thrombosis available in other well-conducted studies (Borghetti *et al.*, 2020) given aggressive anticoagulation used at our center early in the pandemic, and a so far incomplete understanding of mechanisms by which aPL-associated IgG fractions activate endothelial cells. However, given the urgency of COVID-19 research, we believe these issues are counterbalanced by the relatively large sample size and the heretofore unknown discovery of endothelial cell-activating antibody profiles in some COVID-19 sera. Indeed, these data also put the diffuse organ involvement of COVID-19 into context, where a non-specific humoral response to the illness may disrupt the normally quiescent endothelium and potentiate vascular inflammation. As we await the definitive vaccine-based solutions that will hopefully end the pandemic, these findings give further context to the complex interplay between SARS-CoV-2 infection, the human immune system, and COVID-19 severity.

## REFERENCES

- Abdel-Wahab N, Lopez-Olivo MA, Pinto-Patarroyo GP, Suarez-Almazor ME (2016) Systematic review of case reports of antiphospholipid syndrome following infection. *Lupus* 25: 1520-1531
- Abdel-Wahab N, Talathi S, Lopez-Olivo MA, Suarez-Almazor ME (2018) Risk of developing antiphospholipid antibodies following viral infection: a systematic review and meta-analysis. *Lupus* 27: 572-583
- Allen KL, Fonseca FV, Betapudi V, Willard B, Zhang J, McCrae KR (2012) A novel pathway for human endothelial cell activation by antiphospholipid/anti-beta2 glycoprotein I antibodies. *Blood* 119: 884-893
- Asherson RA, Cervera R (1994) 'Primary', 'secondary' and other variants of the antiphospholipid syndrome. *Lupus* 3: 293-298
- Asherson RA, Cervera R (2003) Antiphospholipid antibodies and infections. *Ann Rheum Dis* 62: 388-393
- Blank M, Asherson RA, Cervera R, Shoenfeld Y (2004) Antiphospholipid syndrome infectious origin. *J Clin Immunol* 24: 12-23
- Borghi MO, Beltagy A, Garrafa E, Curreli D, Cecchini G, Bodio C, Grossi C, Blengino S, Tincani A, Franceschini F *et al* (2020) Anti-Phospholipid Antibodies in COVID-19 Are Different From Those Detectable in the Anti-Phospholipid Syndrome. *Frontiers in immunology* 11: 584241
- Chang SE, Feng A, Meng W, Apostolidis SA, Mack E, Artandi M, Barman L, Bennett K, Chakraborty S, Chang I *et al* (2021) New-Onset IgG Autoantibodies in Hospitalized Patients with COVID-19. *medRxiv : the preprint server for health sciences*
- Colling ME, Tourdot BE, Kanthi Y (2021) Inflammation, Infection and Venous Thromboembolism. *Circulation research* 128: 2017-2036
- Conway EM, Prydzial ELG (2020) Is the COVID-19 thrombotic catastrophe complement-connected? *Journal of thrombosis and haemostasis : JTH* 18: 2812-2822
- Leppkes M, Knopf J, Naschberger E, Lindemann A, Singh J, Herrmann I, Stürzl M, Staats L, Mahajan A, Schauer C *et al* (2020) Vascular occlusion by neutrophil extracellular traps in COVID-19. *EBioMedicine* 58: 102925
- Middleton EA, He XY, Denorme F, Campbell RA, Ng D, Salvatore SP, Mostyka M, Baxter-Stoltzfus A, Borczuk AC, Loda M *et al* (2020) Neutrophil extracellular traps contribute to immunothrombosis in COVID-19 acute respiratory distress syndrome. *Blood* 136: 1169-1179

- Müller-Calleja N, Hollerbach A, Royce J, Ritter S, Pedrosa D, Madhusudhan T, Teifel S, Meineck M, Häuser F, Canisius A *et al* (2021) Lipid presentation by the protein C receptor links coagulation with autoimmunity. *Science (New York, NY)* 371: eabc0956
- Nicolai L, Leunig A, Brambs S, Kaiser R, Weinberger T, Weigand M, Muenchhoff M, Hellmuth JC, Ledderose S, Schulz H *et al* (2020) Immunothrombotic Dysregulation in COVID-19 Pneumonia Is Associated With Respiratory Failure and Coagulopathy. *Circulation* 142: 1176-1189
- Pierangeli SS, Colden-Stanfield M, Liu X, Barker JH, Anderson GL, Harris EN (1999) Antiphospholipid antibodies from antiphospholipid syndrome patients activate endothelial cells in vitro and in vivo. *Circulation* 99: 1997-2002
- Shi H, Zuo Y, Yalavarthi S, Gockman K, Zuo M, Madison JA, Blair C, Woodward W, Lezak SP, Lugogo NL *et al* (2021) Neutrophil calprotectin identifies severe pulmonary disease in COVID-19. *Journal of leukocyte biology* 109: 67-72
- Silvin A, Chapuis N, Dunsmore G, Goubet AG, Dubuisson A, Derosa L, Almire C, Henon C, Kosmider O, Droin N *et al* (2020) Elevated Calprotectin and Abnormal Myeloid Cell Subsets Discriminate Severe from Mild COVID-19. *Cell* 182: 1401-1418 e1418
- Simantov R, LaSala JM, Lo SK, Gharavi AE, Sammaritano LR, Salmon JE, Silverstein RL (1995) Activation of cultured vascular endothelial cells by antiphospholipid antibodies. *J Clin Invest* 96: 2211-2219
- Sung J, Anjum S (2020) Coronavirus Disease 2019 (COVID-19) Infection Associated With Antiphospholipid Antibodies and Four-Extremity Deep Vein thrombosis in a Previously Healthy Female. *Cureus* 12: e8408
- Wang EY, Mao T, Klein J, Dai Y, Huck JD, Jaycox JR, Liu F, Zhou T, Israelow B, Wong P *et al* (2021) Diverse functional autoantibodies in patients with COVID-19. *Nature* 595: 283-288
- Wenzel C, Stoiser B, Locker GJ, Laczika K, Quehenberger P, Kapiotis S, Frass M, Pabinger I, Knobl P (2002) Frequent development of lupus anticoagulants in critically ill patients treated under intensive care conditions. *Crit Care Med* 30: 763-770
- Wichmann D, Sperhake JP, Lütgehetmann M, Steurer S, Edler C, Heinemann A, Heinrich F, Mushumba H, Kniep I, Schröder AS *et al* (2020) Autopsy Findings and Venous Thromboembolism in Patients With COVID-19: A Prospective Cohort Study. *Annals of internal medicine* 173: 268-277
- Woodruff MC, Ramonell RP, Nguyen DC, Cashman KS, Saini AS, Haddad NS, Ley AM, Kyu S, Howell JC, Ozturk T *et al* (2020) Extrafollicular B cell responses correlate with neutralizing antibodies and morbidity in COVID-19. *Nat Immunol* 21: 1506-1516

Yalavarthi S, Gould TJ, Rao AN, Mazza LF, Morris AE, Nunez-Alvarez C, Hernandez-Ramirez D, Bockenstedt PL, Liaw PC, Cabral AR *et al* (2015) Release of neutrophil extracellular traps by neutrophils stimulated with antiphospholipid antibodies: a newly identified mechanism of thrombosis in the antiphospholipid syndrome. *Arthritis Rheumatol* 67: 2990-3003

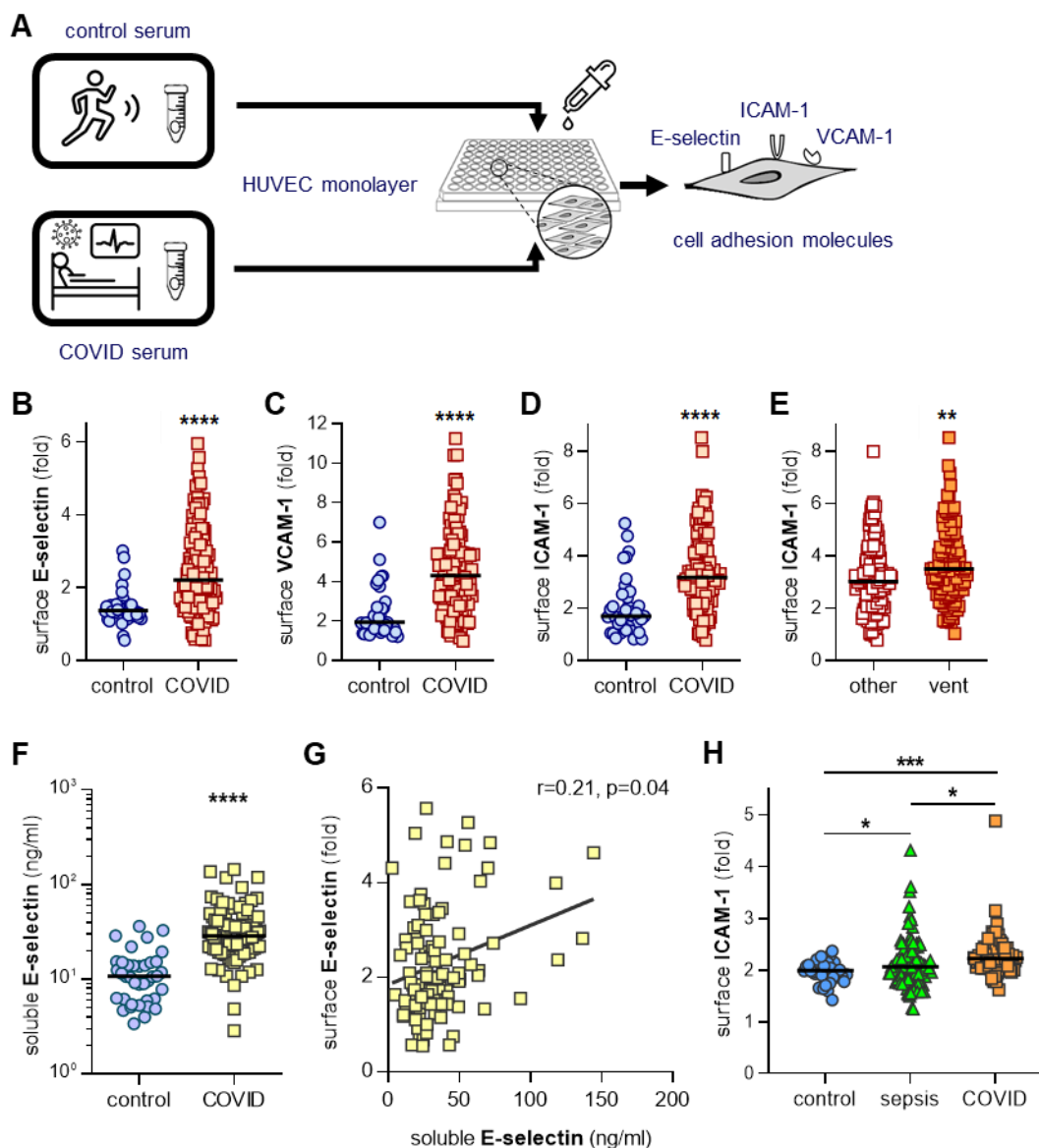
Zuo Y, Estes SK, Ali RA, Gandhi AA, Yalavarthi S, Shi H, Sule G, Gockman K, Madison JA, Zuo M *et al* (2020a) Prothrombotic autoantibodies in serum from patients hospitalized with COVID-19. *Science translational medicine* 12: eabd3876

Zuo Y, Yalavarthi S, Shi H, Gockman K, Zuo M, Madison JA, Blair C, Weber A, Barnes BJ, Egeblad M *et al* (2020b) Neutrophil extracellular traps in COVID-19. *JCI insight* 5: e138999

## **ACKNOWLEDGMENTS**

The authors are indebted to all the individuals with COVID-19 and sepsis who participated in this study, and to the frontline workers during the pandemic.

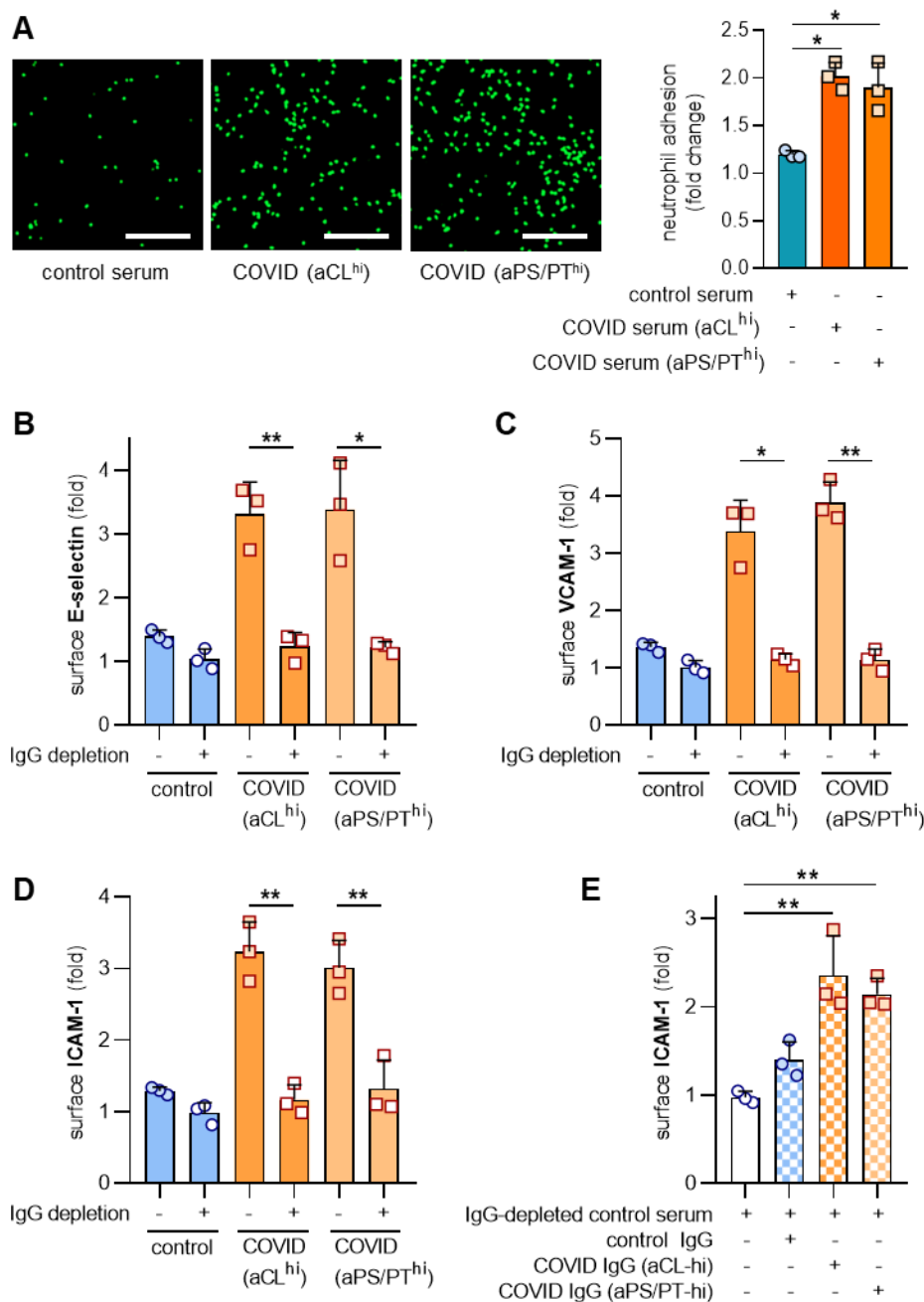
<b>Table 1: Correlation of HUVEC cell adhesion molecules with antiphospholipid antibodies in COVID-19 patients</b>						
	<b>E-selectin</b>		<b>ICAM-1</b>		<b>VCAM-1</b>	
Spearman	r	p	r	p	r	p
<b>Antiphospholipid antibodies</b>						
IgG anticardiolipin	0.446	****	0.346	***	0.421	****
IgM anticardiolipin	0.369	****	0.357	****	0.252	**
IgG anti- $\beta_2$ GPI	0.156	ns	0.076	ns	0.213	*
IgM anti- $\beta_2$ GPI	0.009	ns	0.150	ns	0.047	ns
IgG anti-PS/PT	0.432	****	0.299	***	0.252	**
IgM anti-PS/PT	0.254	**	0.276	**	0.115	ns
<b>Other biomarkers</b>						
C-reactive protein	-0.008	ns	0.003	ns	0.173	ns
D-dimer	0.175	ns	0.258	*	0.133	ns
Calprotectin	0.206	*	0.197	*	0.203	*
ns=not significant; *p<0.05, **p<0.01, ***p<0.001, and ****p<0.0001						



**Figure 1: Activation of human umbilical vein endothelial cells (HUVEC) by control or COVID-19 serum.** **A**, Schematic workflow for in-cell ELISA. HUVEC were cultured for 6 hours with serum from either healthy controls (collected pre-pandemic) (n=38) or patients hospitalized with COVID-19 (n=118). Cells were then fixed and surface expression of E-selectin (**B**), VCAM-1 (**C**), or ICAM-1 (**D**) was quantified. Median values are indicated by horizontal lines. Groups were analyzed by Mann-Whitney test; \*\*\*\*p<0.0001. **E**, Beyond the 118 COVID-19 patients tested in panel D, surface expression of ICAM-1 was tested in the context of an additional 126 unique patient samples. Patients requiring mechanical ventilation (n=101) are compared to hospitalized patients who were not mechanically ventilated (n=143); p<0.01 by Mann Whitney test. **F**, Serum from healthy controls (n=38) and COVID-19 patients (n=102) were assessed for

soluble E-selectin. COVID-19 samples were compared to controls by Mann-Whitney test; \*\*\*\* $p < 0.0001$ . **G**, Soluble E-selectin was compared to HUVEC E-selectin expression as presented in panel B. Correlation was determined by Spearman's method. **H**, HUVEC were cultured for 6 hours with plasma from healthy controls (n=36), intensive care unit patients with non-COVID sepsis (n=100), or patients hospitalized with COVID-19 (n=72). Cells were then fixed and surface expression of ICAM-1 was quantified. Groups were analyzed by one-way ANOVA with correction for multiple comparisons by Holm-Sidak's method; \* $p < 0.05$  and \*\*\* $p < 0.001$ .





**Figure 2: Depletion of IgG from serum with high levels of anticardiolipin (aCL) and anti-phosphatidylserine/prothrombin (aPS/PT) antibodies alleviates HUVEC activation. A,** Serum was pooled from 3 patients with positive aCL IgG or 5 patients with positive aPS/PT IgG. HUVEC monolayers were then treated with 2.5% COVID or control serum for 6 hours. Calcein-AM-labeled neutrophils were then added as described in Methods. Scale bar=200 microns. Mean  $\pm$  standard deviation is presented for n=3 independent experiments; \*p<0.05 by one-way ANOVA corrected by Dunnett's test. **B-D,** IgG was depleted from each of the aforementioned

pools. Activation of HUVEC was determined after culture for 6 hours as defined by surface expression of E-selectin (**B**), VCAM-1 (**C**), or ICAM-1 (**D**). The experiment was repeated on 3 different days, and bars represent mean and standard deviation. Groups were compared by 2-sided paired t-test; \* $p < 0.05$  and \*\* $p < 0.01$ . **E**, IgG was purified from the pooled samples referenced in A-C, and then supplemented (100  $\mu\text{g/ml}$ ) into control serum that had been depleted of IgG. Activation of HUVEC was determined after culture for 6 hours as defined by surface expression of ICAM-1. Groups were compared by one-way ANOVA with correction for multiple comparisons by Tukey's test; \*\* $p < 0.01$ .

## SUPPLEMENTARY INFORMATION

### **Endothelial cell-activating antibodies in COVID-19**

Shi *et al.*

## **MATERIALS AND METHODS**

**Serum and plasma samples from patients with COVID-19 and sepsis.** Blood was collected into either serum separator tubes containing clot activator and serum separator gel or EDTA tubes by a trained hospital phlebotomist. After completion of testing ordered by the clinician, the samples were released to the research laboratory. Serum and plasma samples were immediately divided into small aliquots and stored at  $-80^{\circ}\text{C}$  until the time of testing. All 118 patients in the primary cohort and 126 patients in the expansion cohort had a confirmed COVID-19 diagnosis based on U.S. Food and Drug Administration (FDA)-approved RNA testing. All COVID-19 aspects of the study complied with all relevant ethical regulations and was approved by the University of Michigan Institutional Review Board (HUM00179409). For sepsis, consent was obtained from either the patient or their legally authorized representative (HUM00131596). Blood was collected through an existing catheter and handed to the study coordinator. The sample was walked back to the laboratory and processed by standard methods. Plasma was immediately divided into small aliquots and stored at  $-80^{\circ}\text{C}$  until the time of testing.

**Cell culture.** Human umbilical vein endothelial cells (HUVEC) were purchased from ATCC. For most experiments, HUVEC were cultured in Endothelial Cell Growth Basal Medium-2 (CC-3156, Lonza) supplemented with EGM-2 MV SingleQuots Kit (CC-4147, Lonza) without hydrocortisone. 10,000 cells/well were seeded into 0.2% gelatin-coated 96-well tissue culture plates the day before experiments. The following day, HUVEC were cultured with 2.5% human serum or IgG at a concentration of 100  $\mu\text{g}/\text{ml}$  at  $37^{\circ}\text{C}$  in a humidified atmosphere of 5%  $\text{CO}_2$ . For the 2.5% human plasma experiments, HUVEC were cultured in Endothelial Cell Basal Medium (CC-3121, Lonza) supplemented with EGM-MV SingleQuots Kit (CC-4143, Lonza). All experiments were performed using HUVEC of passage 6 or fewer.

**Neutrophil adhesion assay.**  $1 \times 10^4$  HUVEC per well were seeded into a 96-well plate and cultured until confluent. In the BSL-3 facility, the HUVEC monolayer was cultured with 2.5% COVID serum or control serum for 6 hours. Fresh neutrophils isolated from healthy controls were labeled with calcein-AM (C1430, Thermo) for 30 minutes at  $37^{\circ}\text{C}$ . After washing the HUVEC monolayer,  $3 \times 10^5$  labeled neutrophils were then added and incubated for 20 minutes. After washing with pre-warmed HBSS, adherent neutrophil fluorescence was measured with a microplate fluorescence reader (BioTek) at 485 and 535 nm. After reading, the cells were fixed with 4% PFA for 30 minutes, and images were captured with a Cytation 5 Cell Imaging Multi-Mode Reader (BioTek) through the GFP channel.

**IgG depletion from serum.** IgG was purified from COVID-19 and control serum with protein G Agarose beads (Pierce). Briefly, 800  $\mu$ l of protein G agarose beads were washed at least 10 times by PBS. Then, 200  $\mu$ l of serum was added and incubated with the beads at 4°C overnight. The supernatant was collected after spinning the tube at 2500xg for 5 minutes. The supernatant was the IgG depleted serum. The same volume of serum was incubated without beads under the same conditions as a mock control. Depletion was confirmed by Coomassie-stained gels.

**Purification of human IgG fractions from serum.** Serum was diluted in IgG binding buffer and passed through a Protein G Agarose column (Pierce) at least 5 times. IgG was then eluted with 0.1 M glycine and neutralized with 1 M Tris. This was followed by overnight dialysis against PBS at 4°C. IgG purity was verified with Coomassie staining, and concentrations were determined by BCA protein assay (Pierce) according to manufacturer's instructions. In some experiments, IgG was used to supplement control serum at a final concentration of 100  $\mu$ g/ml. All IgG samples were determined to have endotoxin level below 0.1 EU/ml by the Pierce LAL Chromogenic Endotoxin Quantitation Kit (A39552) according to manufacturer's instructions. This kit offers high sensitivity with linear detection range of 0.01-1.0 EU/mL.

**In-cell ELISA.** In the Biosafety Level 3 facility, endothelial cell activation was assessed by an in-cell ELISA, which measured surface expression of E-selectin, ICAM-1, VCAM-1 on endothelial cells. Briefly, confluent monolayers of HUVEC in 96-well microplates were incubated with 2.5% serum or 100  $\mu$ g/ml purified IgG for 6 hours and then fixed using the same volume of 8% paraformaldehyde for 30 minutes. Cells were blocked with 2x blocking solution (Abcam) at room temperature for 2 hours. After washing with PBS, cells were incubated with 5  $\mu$ g/ml primary mouse anti-human antibodies against E-selectin (catalog BBA26, R&D), VCAM-1 (catalog BBA5, R&D), or ICAM-1 (ab2213, Abcam) at 4°C overnight. Next, 100  $\mu$ l of diluted horseradish peroxidase conjugated rabbit anti-mouse IgG (1:2000, Jackson ImmunoResearch) in 1x blocking solution was added and incubated at room temperature for 1 hour. After washing thoroughly, 100  $\mu$ l of TMB substrate was added blue color development was measured at OD 650 nm with a Cytation 5 Cell Imaging Multi-Mode Reader (BioTek). The signals were corrected by subtracting the mean signal of wells incubated in the absence of the primary antibody from all other readings.

**Quantification of soluble E-selectin in serum.** Soluble E-selectin was quantified in serum using the human E-selectin DuoSet ELISA (DY724, R&D system) according to the manufacturer's instructions.

**Quantification of antiphospholipid antibodies (aPL).** aPL were quantified in sera or plasma using Quanta Lite® ACA IgG, ACA IgM, a $\beta_2$ GPI IgG, a $\beta_2$ GPI IgM, aPS/PT IgG, and aPS/PT IgM kits (Inova Diagnostics Inc.) according to the manufacturer's instructions, as we did previously [1]. All assays are approved for clinical use and received 510(k) clearance from the FDA. Quanta Lite® aPL ELISAs (Inova Diagnostics) are well recognized by the international APS research community and are utilized by the largest international APS clinical research network registry, APS ACTION, in its core laboratories as the "gold standard" for aPL testing [2, 3]. Here, aCL assays were reported in GPL and MPL units; a $\beta_2$ GPI assays in standard  $\beta_2$ GPI IgG units (SGU) and standard  $\beta_2$ GPI IgM units (SMU); and aPS/PT assays in IgG and IgM units. All were per the manufacturer's specifications.

**Quantification of myeloperoxidase-DNA complexes.** Myeloperoxidase-DNA complexes were quantified similarly to what has been previously described [4]. This protocol used several reagents from the Cell Death Detection ELISA kit (Roche). First, a high-binding EIA/RIA 96-well plate (Costar) was coated overnight at 4°C with anti-human myeloperoxidase antibody (Bio-Rad 0400-0002), diluted to a concentration of 1  $\mu$ g/ml in coating buffer (Cell Death kit). The plate was washed two times with wash buffer (0.05% Tween 20 in PBS), and then blocked with 4% bovine serum albumin in PBS (supplemented with 0.05% Tween 20) for 2 hours at room temperature. The plate was again washed five times, before incubating for 90 minutes at room temperature with 10% serum or plasma in the aforementioned blocking buffer (without Tween 20). The plate was washed five times, and then incubated for 90 minutes at room temperature with 10x anti-DNA antibody (HRP-conjugated; from the Cell Death kit) diluted 1:100 in blocking buffer. After five more washes, the plate was developed with 3,3',5,5'-Tetramethylbenzidine (TMB) substrate (Invitrogen) followed by a 2N sulfuric acid stop solution. Absorbance was measured at a wavelength of 450 nm using a Cytation 5 Cell Imaging Multi-Mode Reader (BioTek). Data were normalized to *in vitro*-prepared NET standards included on every plate, which were quantified based on their DNA content.

**Quantification of cell-free DNA.** Cell-free DNA was quantified in sera using the Quant-iT PicoGreen dsDNA Assay Kit (Invitrogen, P11496) according to the manufacturer's instructions.

**Quantification of Cit-H3.** Cit-H3 was quantified in sera using the Citrullinated Histone H3 (clone 11D3) ELISA Kit (Cayman, 501620) according to the manufacturer's instructions.

**Quantification of S100A8/A9 (calprotectin).** Calprotectin levels were measured with the Human S100A8/S100A9 Heterodimer DuoSet ELISA (DY8226-05, R&D Systems) according to the manufacturer's instructions, as we have done previously [5].

**Statistical analysis.** Normally-distributed data were analyzed by two-sided t test and skewed data were analyzed by Mann-Whitney test when two groups were analyzed. For more than two groups, one-way ANOVA with correction for multiple comparisons was utilized. Correlations were tested by Spearman's correlation coefficient. Data analysis was with GraphPad Prism software version 8. Statistical significance was defined as  $p < 0.05$ .

## REFERENCES

1. Zuo Y, Estes SK, Ali RA, Gandhi AA, Yalavarthi S, Shi H, et al. Prothrombotic autoantibodies in serum from patients hospitalized with COVID-19. *Sci Transl Med*. 2020 Nov 18; 12(570).
2. Erkan D, Lockshin MD, members AA. APS ACTION--AntiPhospholipid Syndrome Alliance For Clinical Trials and InternatiOnal Networking. *Lupus*. 2012 Jun; 21(7):695-698.
3. Sciascia S, Willis R, Pengo V, Krilis S, Andrade D, Tektonidou MG, et al. The comparison of real world and core laboratory antiphospholipid antibody ELISA results from antiphospholipid syndrome alliance for clinical trials & international networking (APS ACTION) clinical database and repository analysis. *Thromb Res*. 2019 Mar; 175:32-36.
4. Kessenbrock K, Krumbholz M, Schonermarck U, Back W, Gross WL, Werb Z, et al. Netting neutrophils in autoimmune small-vessel vasculitis. *Nat Med*. 2009 Jun; 15(6):623-625.
5. Shi H, Zuo Y, Yalavarthi S, Gockman K, Zuo M, Madison JA, et al. Neutrophil calprotectin identifies severe pulmonary disease in COVID-19. *J Leukoc Biol*. 2021 Jan; 109(1):67-72.



<b>Supplemental Table 1: Patient characteristics (serum)</b>		
	<b>COVID-19</b> (primary cohort)	<b>COVID-19</b> (expansion cohort for surface ICAM-1 measurement)
<b>Demographics</b>		
Number	118	126
Age (years) <sup>a</sup>	61.9 ± 17.2 (25-96)	58.3 ± 16.7 (16-90)
Hospital day <sup>b</sup>	4. (1-25)	4 ± 5.8 (1-40)
Female	55 (47%)	50 (40%)
White/Caucasian	47 (40%)	55 (44%)
Black/African-American	50 (42%)	52 (41%)
<b>Comorbidities</b>		
Diabetes	45 (38%)	51 (40%)
Ischemic heart disease	36 (31%)	67 (53%)
Renal disease	33 (28%)	55 (44%)
Lung disease	29 (25%)	67 (53%)
Autoimmune	3 (3%)	3 (2%)
Cancer	15 (13%)	17 (13%)
History of stroke	11 (9%)	5 (4%)
Obesity	50 (42%)	67 (53%)
Hypertension	73 (62%)	63 (50%)
Immune deficiency	7 (6%)	35 (28%)
History of smoking	23 (19%)	29 (23%)
<b>Respiratory status</b>		
Mechanical ventilation	41 (35%)	59 (47%)
High-flow oxygen	8 (7%)	12 (10%)
Nasal-cannula oxygen	38 (32%)	29 (23%)
Room air	31 (26%)	26 (21%)
<sup>a</sup> Mean ± standard deviation (range)		
<sup>b</sup> Median = 3 (original) and X (expansion)		

<b>Supplemental Table 2: Patient characteristics (plasma)</b>			
	<b>Sepsis</b>		<b>COVID-19</b>
<b>Demographics</b>			
Number	100		72
Age (years) <sup>a</sup>	62.6 ± 6.0	(50-73)	61.43 ± 18 (25-96)
Hospital day <sup>b</sup>	6.7 ± 6.9	(1-40)	5.1 ± 6.1 (0-24)
Female	47	(47%)	33 (46%)
White/Caucasian	92	(92%)	26 (36%)
Black/African-American	4	(4%)	32 (44%)
<b>Comorbidities</b>			
Diabetes	34	(34%)	29 (40%)
Ischemic heart disease	26	(26%)	25 (35%)
Renal disease	51	(51%)	19 (26%)
Lung disease	42	(42%)	16 (22%)
Autoimmune	9	(9%)	2 (3%)
Cancer	37	(37%)	8 (11%)
Obesity	50	(50%)	32 (44%)
Hypertension	48	(48%)	43 (60%)
History of smoking	49	(49%)	15 (21%)
<b>Respiratory status</b>			
Mechanical ventilation	65	(65%)	33 (46%)
High-flow oxygen	11	(11%)	5 (7%)
Nasal-cannula oxygen	24	(24%)	21 (29%)
Room air	0	(0%)	13 (18%)
<sup>a</sup> Mean ± standard deviation (range)			
<sup>b</sup> Median = 4 (sepsis) and 2 (COVID-19)			

<b>Supplemental Table 3: Correlation of HUVEC surface activation markers with NET-related markers in COVID-19 patients</b>						
	<b>E-selectin</b>		<b>ICAM-1</b>		<b>VCAM-1</b>	
Spearman	r	p	r	p	r	p
<b>NET-related markers</b>						
Cell-free DNA	0.073	ns	0.135	ns	0.237	*
MPO-DNA	0.156	ns	0.277	**	0.256	**
Cit-H3	0.079	ns	0.076	ns	0.224	*
ns=not significant; NETs=neutrophil extracellular traps; MPO=myeloperoxidase; Cit-H3=citrullinated histone H3; *p<0.05, **p<0.01						

<b>Supplemental Table 4: Prevalence of antiphospholipid antibodies in serum from patients with COVID-19 (n=118)</b>				
aPL	Number of positive (manufacturer's cutoff)	%	Number of positive (titer $\geq$ 40 units)	%
aCL IgG	4	3%	0	0%
aCL IgM	29	25%	9	8%
a $\beta$ <sub>2</sub> GPI IgG	2	2%	2	2%
a $\beta$ <sub>2</sub> GPI IgM	5	4%	3	3%
aPS/PT IgG	28	24%	15	13%
aPS/PT IgM	18	15%	12	10%
Any positive	53	45%	30	25%

The manufacturer's cutoff: aCL IgG >20 GPL, aCL IgM >20 MPL, a $\beta$ <sub>2</sub>GPI IgG >20 SGU, a $\beta$ <sub>2</sub>GPI IgM >20 SMU, aPS/PT IgG >30 IgG units, and aPS/PT IgM >30 IgM units; aPL antibody=antiphospholipid antibodies; aCL=anticardiolipin antibodies; a $\beta$ <sub>2</sub>GPI=anti-beta-2 glycoprotein I antibodies; aPS/PT=anti-phosphatidylserine/prothrombin antibodies.

**Supplemental Table 5:** Prevalence of antiphospholipid antibodies in serum from healthy controls (n=38)

aPL	Number of positive (manufacturer's cutoff)	%	Number of positive (titer $\geq$ 40 units)	%
aCL IgG	0	0%	0	0%
aCL IgM	1	3%	0	0%
a $\beta$ <sub>2</sub> GPI IgG	0	0%	0	0%
a $\beta$ <sub>2</sub> GPI IgM	1	3%	0	0%
aPS/PT IgG	0	0%	0	0%
aPS/PT IgM	0	0%	0	0%
Any positive	2	5%	0	0%

The manufacturer's cutoff: aCL IgG >20 GPL, aCL IgM >20 MPL, a $\beta$ <sub>2</sub>GPI IgG >20 SGU, a $\beta$ <sub>2</sub>GPI IgM >20 SMU, aPS/PT IgG >30 IgG units, and aPS/PT IgM >30 IgM units; aPL antibody=antiphospholipid antibodies; aCL=anticardiolipin antibodies; a $\beta$ <sub>2</sub>GPI=anti-beta-2 glycoprotein I antibodies; aPS/PT=anti-phosphatidylserine/prothrombin antibodies.

<b>Supplemental Table 6: Prevalence of antiphospholipid antibodies in plasma from healthy controls (n=36)</b>				
aPL	Number of positive (manufacturer's cutoff)	%	Number of positive (titer $\geq$ 40 units)	%
aCL IgG	0	0%	0	0%
aCL IgM	1	3%	0	0%
a $\beta$ <sub>2</sub> GPI IgG	0	0%	0	0%
a $\beta$ <sub>2</sub> GPI IgM	0	0%	0	0%
aPS/PT IgG	0	0%	0	0%
aPS/PT IgM	0	0%	0	0%
Any positive	1	3%	0	0%

The manufacturer's cutoff: aCL IgG >20 GPL, aCL IgM >20 MPL, a $\beta$ <sub>2</sub>GPI IgG >20 SGU, a $\beta$ <sub>2</sub>GPI IgM >20 SMU, aPS/PT IgG >30 IgG units, and aPS/PT IgM >30 IgM units; aPL antibody=antiphospholipid antibodies; aCL=anticardiolipin antibodies; a $\beta$ <sub>2</sub>GPI=anti-beta-2 glycoprotein I antibodies; aPS/PT=anti-phosphatidylserine/prothrombin antibodies.

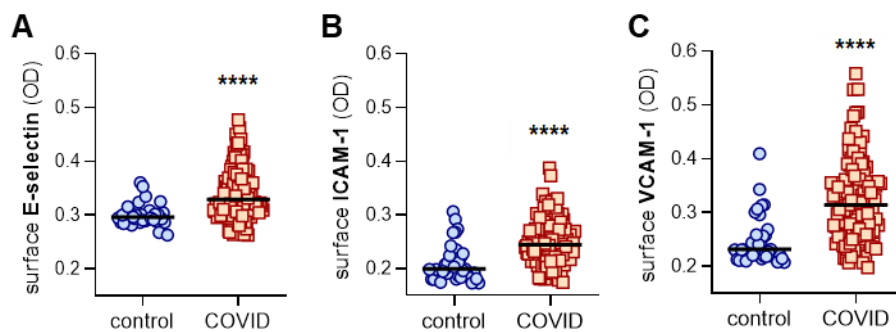
**Supplemental Table 7:** Prevalence of antiphospholipid antibodies in plasma from patients with sepsis (n=100)

aPL	Number of positive (manufacturer's cutoff)	%	Number of positive (titer ≥40 units)	%
aCL IgG	0	0%	0	0%
aCL IgM	10	10%	1	1%
aβ2GPI IgG	2	2%	2	2%
aβ2GPI IgM	4	4%	0	0%
aPS/PT IgG	2	2%	1	1%
aPS/PT IgM	24	24%	21	21%
Any positive	29	29%	23	23%

The manufacturer's cutoff: aCL IgG >20 GPL, aCL IgM >20 MPL, aβ2GPI IgG >20 SGU, aβ2GPI IgM >20 SMU, aPS/PT IgG >30 IgG units, and aPS/PT IgM >30 IgM units; aPL antibody=antiphospholipid antibodies; aCL=anticardiolipin antibodies; aβ2GPI=anti-beta-2 glycoprotein I antibodies; aPS/PT=anti-phosphatidylserine/prothrombin antibodies.

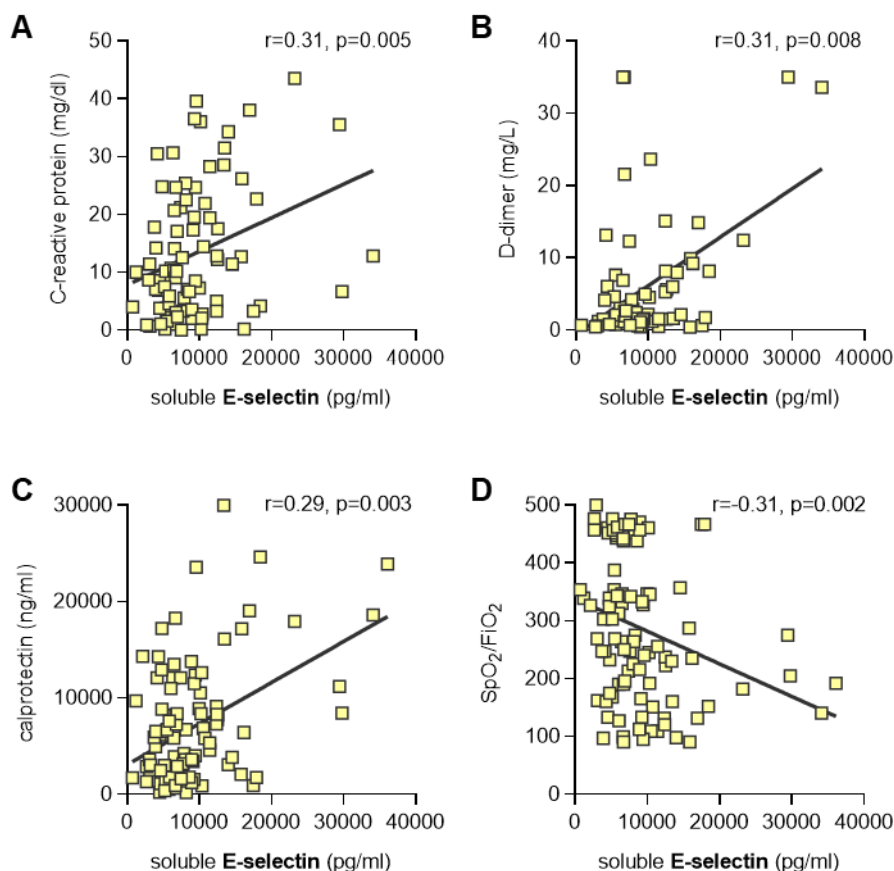
<b>Supplementary Table 8: Correlation of HUVEC surface ICAM-1 with antiphospholipid antibodies in sepsis patients</b>		
	ICAM-1	
Spearman	r	p
Antiphospholipid antibodies		
IgG anticardiolipin	0.283	**
IgM anticardiolipin	0.191	ns
IgG anti-β2GPI	0.056	ns
IgM anti-β2GPI	0.161	ns
IgG anti-PS/PT	-0.021	ns
IgM anti-PS/PT	0.293	**
ns=not significant; *p<0.05, **p<0.01, ***p<0.001, and ****p<0.0001		



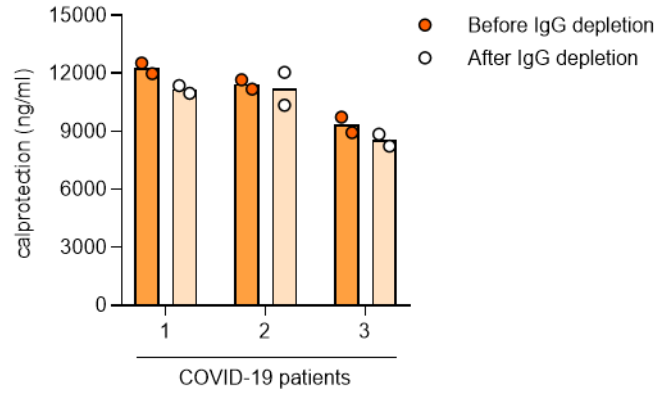


**Supplemental Figure 1: Activation of human umbilical vein endothelial cells (HUVEC) by control or COVID-19 serum (presented as optical density rather than fold change).**

HUVEC were cultured for 6 hours with serum from either healthy controls (collected pre-pandemic) (n=38) or patients hospitalized with COVID-19 (n=118). Cells were then fixed and surface expression of E-selectin (A), VCAM-1 (B), or ICAM-1 (C) was quantified. Median values are indicated by horizontal lines. Data were presented as raw absorbance (optical density 650 nm). Groups were analyzed by Mann-Whitney test; \*\*\*\*p<0.0001.



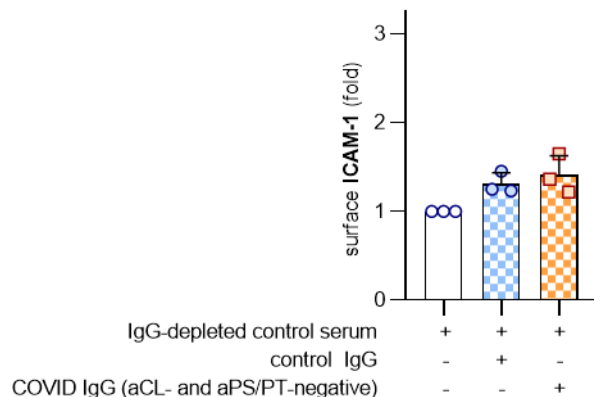
**Supplemental Figure 2: Association between soluble E-selectin in serum and clinical parameters.** Soluble E-selectin in COVID-19 serum was compared to laboratory and clinical data when available on the same day as the serum collection. Spearman's correlations are presented for C-reactive protein (n=83) (A), D-dimer (n=72) (B), calprotectin (n=102) (C), oxygenation efficiency (n=99) (pulse oximetry/fraction of inspired oxygen, D).



**Supplemental Figure 3: Serum calprotectin levels remain stable after IgG depletion.**

Serum calprotectin levels from 3 COVID-19 patients were tested before and after IgG depletion.

There were no statistically significant comparisons by paired t-test.



**Supplemental Figure 4: IgG from serum with negative anticardiolipin (aCL) and anti-phosphatidylserine/prothrombin (aPS/PT) antibodies does not trigger HUVEC activation.**

Serum was pooled from 3 patients with negative testing for both aCL IgG and aPS/PT IgG. IgG (100 µg/ml) was purified from the pooled samples, and then spiked into control serum that had been depleted of IgG. Activation of HUVEC was determined after culture for 6 hours as defined by surface expression of ICAM-1. Groups were compared by one-way ANOVA with correction for multiple comparisons by Dunnett's test; no comparisons were statistically significant.