

Endothelial cell-activating antibodies in COVID-19

Hui Shi^{1,2}, Yu Zuo¹, Alex A. Gandhi¹, Gautam Sule¹, Srilakshmi Yalavarthi¹, Kelsey Gockman¹, Jacqueline A. Madison¹, Jintao Wang⁵, Melanie Zuo³, Yue Shi⁴, Jason S. Knight^{1‡}, and Yogendra Kanthi^{5,6‡}

‡ Jason S. Knight and Yogendra Kanthi are co-corresponding authors

Affiliations

¹ Division of Rheumatology, Department of Internal Medicine, University of Michigan, Ann Arbor, Michigan, USA

² Division of Rheumatology, Ruijin Hospital, Shanghai Jiao Tong University School of Medicine, Shanghai, China

³ Division of Geriatric and Palliative Medicine, Department of Internal Medicine, University of Michigan, Ann Arbor, Michigan, USA

⁴ School of Kinesiology, Shanghai University of Sport, Shanghai, China

⁵ Division of Intramural Research National Heart, Lung and Blood Institute Bethesda, Maryland, USA

⁶ Division of Cardiovascular Medicine, Department of Internal Medicine, University of Michigan, Ann Arbor, Michigan, USA.

Correspondence: Jason S. Knight, MD, PhD (jsknight@umich.edu) and Yogendra Kanthi, MD (yogen.kanthi@nih.gov)

Competing interests: The authors have no competing interests.

Contributors: HS, YZ, AAG, GS, SY, KG, JAM, JW, MZ, and YS conducted experiments and analyzed data. HS, YZ, JSK, and YK conceived the study and analyzed data. All authors participated in writing the manuscript and gave approval before submission.

Funding: The work was supported by a grant from the Rheumatology Research Foundation to JSK and grants from the Michigan Medicine Frankel Cardiovascular Center and A. Alfred Taubman Medical Research Institute to YK and JSK. YZ was supported by a career development grant from the Rheumatology Research Foundation. JAM was partially supported

by the VA Healthcare System. JSK was supported by grants from the NIH (R01HL115138), Burroughs Wellcome Fund, and Lupus Research Alliance. YK was supported by the Intramural Research Program of the NIH and NHLBI, Lasker Foundation, NIH (K08HL131993, R01HL150392), Falk Medical Research Trust Catalyst Award, and JOBST-American Venous Forum Award.

Patient and public involvement: Patients and the public were not involved in design, conduct, reporting, or dissemination of this research.

Patient consent for publication: N/A

Ethics approval: This study complied with all relevant ethical regulations, and was approved by the University of Michigan Institutional Review Board (HUM00179409).

Data availability statement: All data relevant to the study are included in the article or uploaded as online supplementary information.

KEY MESSAGES

What is already known about this subject?

- Patients with COVID-19 are at high risk for fibrin-based occlusion of vascular beds of all sizes. Endothelial cell activation has regularly been described as part of the COVID-19 thrombo-inflammatory storm.

What does this study add?

- The presence of circulating antiphospholipid antibodies is a robust predictor of the ability of COVID-19 serum to activate endothelial cells.
- Purified COVID-19 IgG with high levels of anticardiolipin and anti-PS/PT antibodies trigger a pro-adhesive phenotype in endothelial cells.

How might this impact on clinical practice or future developments?

- Patients with may be screened for antiphospholipid antibodies to evaluate their risk of thrombosis and progression to respiratory failure.
- Patients with high antiphospholipid antibody titers might benefit from treatments used in traditional cases of severe APS such as therapeutic anticoagulation, corticosteroids, and plasmapheresis.

ABSTRACT

Objectives: Patients with coronavirus disease 19 (**COVID-19**) are at high risk for fibrin-based occlusion of vascular beds of all sizes. Considering endothelial cell activation has regularly been described as part of the COVID-19 thrombo-inflammatory storm, we aimed to find upstream mediators of this activation.

Methods: Cultured endothelial cells were exposed to sera from 118 unique patients hospitalized with COVID-19. Surface adhesion markers E-selectin, ICAM-1, and VCAM-1 were detected by in-cell ELISA.

Results: We found modest correlations between serum NET remnants (cell-free DNA, myeloperoxidase-DNA complexes, citrullinated histone H3) and upregulation of surface E-selectin, VCAM-1, and ICAM-1 on endothelial cells. A more robust predictor of the ability of COVID-19 serum to activate endothelial cells was the presence of circulating antiphospholipid antibodies, specifically anticardiolipin IgG and IgM and anti-phosphatidylserine/prothrombin (anti-PS/PT) IgG and IgM. Depletion of total IgG from anticardiolipin-high and anti-PS/PT-high samples markedly restrained upregulation of E-selectin, VCAM-1, and ICAM-1. At the same time, supplementation of control serum with patient IgG was sufficient to trigger endothelial cell activation.

Conclusions: These data are the first to reveal that patient antibodies are a driver of endothelial cell activation in COVID-19 and add important context regarding thrombo-inflammatory effects of autoantibodies in severe COVID-19.

Keywords: COVID-19, autoantibodies, antiphospholipid antibodies, endothelial cells, cell adhesion

INTRODUCTION

There are several likely synergistic mechanisms by which SARS-CoV-2 infection may result in macrovascular and microvascular thrombosis including a cytokine storm that activates leukocytes, endothelium, and platelets; direct activation of various cells by viral infection; and high levels of intravascular neutrophil extracellular traps (**NETs**) (1, 2). The latter are inflammatory cell remnants that amplify thrombosis (3-6).

In recent months, there have been a number of descriptions of what appears to be a priori autoantibody formation in individuals with moderate-to-severe COVID-19. One example replicated by multiple groups is the detection of antiphospholipid antibodies (**aPL Abs**), which mediate antiphospholipid syndrome (**APS**) in the general population. In APS, patients form durable autoantibodies to phospholipids and phospholipid-binding proteins such as prothrombin and beta-2-glycoprotein I. These autoantibodies then engage cell surfaces, where they activate endothelial cells, platelets, and neutrophils (7, 8) and thereby tip the blood-endothelium interface toward thrombosis. While viral infections have long been known to trigger transient aPL Abs (9-12), mechanisms by which these short-lived antibodies may be pathogenic have never been characterized. To this end, our group recently found that COVID-19 IgG fractions enriched for aPL Abs potentially activate neutrophils *in vitro*, while also potentiating thrombosis when injected into mice (13).

Beyond aPL Abs, autoantibodies against the type I interferon response (14, 15) and platelets (16) have been described in moderate-to-severe COVID-19, with both demonstrating potentially important functional properties *in vitro*. At the same time, the circulating B cell compartment of COVID-19 appears reminiscent of the autoimmune disease lupus whereby naïve B cells rapidly take an extrafollicular route to becoming antibody-producing cells (17), and in doing so bypass the normal tolerance checkpoints against autoimmunity provided by the germinal center.

Here, we were interested in the extent to which circulating NET remnants might be an important activator of endothelial cells. We also necessarily turned our attention to aPL Abs as markers of COVID-19 serum with strong endothelial cell activating-potential.

MATERIALS AND METHODS

Detailed Methods are provided in the Supplemental Methods.

Serum samples from patients with COVID-19. Blood was collected into serum separator tubes containing clot activator and serum separator gel by a trained hospital phlebotomist. After completion of biochemical testing ordered by the clinician, the samples were released to the research laboratory. Serum samples were immediately divided into small aliquots and stored at -80°C until the time of testing. All 118 patients had a confirmed COVID-19 diagnosis based on U.S. Food and Drug Administration (FDA)-approved RNA testing.

RESULTS AND DISCUSSION

Activation of HUVECs by COVID-19 serum. Serum samples were collected from 118 patients hospitalized with moderate-to-severe COVID-19 at an academic hospital. The average age was 62, while 47% were female and 42% were Black/African American (**Supplemental Table 1**); 35% were receiving mechanical ventilation. Serum from the COVID-19 patients was added to early-passage human umbilical vein endothelial cells (**HUVECs**), and the expression of surface activation markers was determined after 6 hours via a custom in-cell ELISA compatible with the Biosafety Level-3 facility (**Figure 1A**). As compared with serum samples from 40 healthy controls, the COVID-19 samples triggered an activated endothelial cell phenotype as evidenced by markedly increased surface expression of the leukocyte adhesion molecules E-selectin (**Figure 1B**), VCAM-1 (**Figure 1C**), and ICAM-1 (**Figure 1D**). Taken together, these data indicate that COVID-19 serum contains factors capable of activating endothelial cells.

Association of NET remnants with the endothelial cell-activating potential of COVID-19 serum. Given that NETs are known activators of endothelial cells, we asked whether NET remnants might predict the ability of a particular COVID-19 serum sample to upregulate surface E-selectin, VCAM-1, and ICAM-1. Specifically, we measured NETs in serum via quantification of cell-free DNA, MPO-DNA complexes, and citrullinated histone H3 (**Cit-H3**) (**Table 1**). Serum MPO-DNA complexes demonstrated a modest correlation with surface expression of both VCAM-1 ($r=0.26$, $p<0.01$) and ICAM-1 ($r=0.28$, $p<0.01$). Cell-free DNA and Cit-H3 both correlated with VCAM-1 only ($r=0.24$, $p<0.05$ and $r=0.22$, $p<0.05$, respectively) (**Table 1**). Beyond these relatively specific markers of NETs, we also sought correlations with general markers of thrombo-inflammation including C-reactive protein, D-dimer, and neutrophil calprotectin. Of the three, only neutrophil calprotectin demonstrated modest correlations with expression of the three endothelial cell surface markers ($r=0.19-0.20$, $p<0.05$) (**Table 1**). Taken together, these data demonstrate modest correlations between NETs/thrombo-inflammation and the ability of COVID-19 serum to activate endothelial cells.

Association of aPL Abs with the endothelial cell-activating potential of COVID-19 serum. We next reasoned that COVID-19 derived aPL Abs might also activate endothelial cells. We focused on the IgG and IgM isotypes of two types of aPL Abs that accounted for the majority of positive tests in a recent study: anticardiolipin and anti-phosphatidylserine/prothrombin (**anti-PS/PT**) (13). Interestingly, we detected strong and consistent correlations between all four antibodies and the three markers of endothelial cell activation (E-selectin, VCAM-1, and ICAM-

1) (**Table 1**). The only correlation that was not statistically significant was between anti-PS/PT IgM and VCAM-1 (**Table 1**). In summary, while we noted modest correlations between serum NET remnants and upregulation of E-selectin, VCAM-1, and ICAM-1, much stronger correlations were seen between various aPL Abs and endothelial cell activation.

Depletion of IgG alleviates HUVEC activation. To verify that upregulation of E-selectin, VCAM-1, and ICAM-1 associated with increased adhesive functions of HUVECs, we conducted a neutrophil adhesion assay. We pooled serum from five COVID-19 patients with high anticardiolipin IgG and separately five COVID-19 patients with high anti-PS/PT IgG activity. We then stimulated HUVECs with the pooled sera. Compared with control serum, both COVID samples significantly increased neutrophils adhesion (**Figure 2A**). We next sought to prove or disprove whether IgG fractions from COVID-19 patients could directly activate HUVECs. To this end, we subjected the pooled sera (anticardiolipin IgG-high and anti-PS/PT IgG-high) to either mock or IgG depletion. As compared with mock depletion, IgG depletion completely mitigated the ability of both of the pooled samples to upregulate endothelial cell E-selectin (**Figure 2B**), VCAM-1 (**Figure 2C**) and ICAM-1 (**Figure 2D**). Upregulation was not though affected by pre-treatment with a pan-Fc receptor blocker, suggesting Fc independence of the antibody-mediated activation (**Supplementary Figure 1**). We next purified a small quantity of IgG from each pool, and then spiked it into control serum that had been depleted of its own IgG. The COVID-19 IgG-supplemented control serum now demonstrated an ability to increase expression of surface ICAM-1 (**Figure 2E**). Taken together, these data indicate that the presence of aPL Abs strongly associates with COVID-19 IgG samples that are able to activate endothelial cells.

Here, we report for the first time that serum from COVID-19 patients activates cultured endothelial cells to express surface adhesion molecules integral to inflammation and thrombosis, namely E-selectin, VCAM-1, and ICAM-1. Furthermore, we found that for at least a subset of serum samples from patients with COVID-19, this activation could be completely mitigated by depleting IgG. The role of aPL Abs in activating endothelial cells has been demonstrated both *in vitro* and *in vivo* (18). For example, IgG fractions from APS patients have long been known to activate HUVECs, as reflected by increased monocyte adherence and expression of adhesion molecules (19). In addition to our findings (13), several other groups have also provided evidence for pathogenic autoantibodies in COVID-19. A recent study detected autoantibodies against type I IFNs (13.7%) in patients with life-threatening COVID-19 (14), and provided evidence that these autoantibodies neutralize interferons *ex vivo*. Another

study suggested that IgG from COVID-19 patients had the ability to induce platelet phosphatidylserine externalization and apoptosis, which may be associated with thromboembolic complications in COVID-19 patients (16). An interesting study used a high-throughput autoantibody discovery technique to screen a cohort of COVID-19 patients for autoantibodies against 2,770 extracellular and secreted proteins (20). The authors found a tendency for autoantibodies to be directed against immunomodulatory proteins including cytokines, chemokines, complement components, and cell surface proteins.

There are several potential clinical implications of our findings. One may consider whether patients with moderate-to-severe COVID-19 should be screened for aPL Abs to evaluate their risk of thrombosis and progression to respiratory failure. Patients with high aPL Ab titers might benefit from treatments used in traditional cases of severe APS such as therapeutic anticoagulation, complement inhibition, and plasmapheresis. This study has some limitations including a lack of a direct readout of thrombosis given aggressive anticoagulation used at our center early in the pandemic, and a so far incomplete understanding of mechanisms by which aPL Ab-associated IgG fractions activate endothelial cells. However, given the urgency of COVID-19 research, we believe these issues are counterbalanced by the relatively large sample size and the heretofore unknown discovery of endothelial cell-activating antibodies in COVID-19 serum. Indeed, these data also put the diffuse organ involvement of COVID-19 into context, where a non-specific humoral response to the illness may disrupt the normally quiescent endothelium and potentiate vascular inflammation. As we await the definitive immunologic solutions that will hopefully end the pandemic, these findings give further context to the complex interplay between SARS-CoV-2 infection, the human immune system, and COVID-19 severity.

REFERENCES

1. Zuo Y, Yalavarthi S, Shi H, Gockman K, Zuo M, Madison JA, et al. Neutrophil extracellular traps in COVID-19. *JCI Insight*. 2020;5(11).
2. Shi H, Zuo Y, Yalavarthi S, Gockman K, Zuo M, Madison JA, et al. Neutrophil calprotectin identifies severe pulmonary disease in COVID-19. *J Leukoc Biol*. 2020.
3. Barnes BJ, Adrover JM, Baxter-Stoltzfus A, Borczuk A, Cools-Lartigue J, Crawford JM, et al. Targeting potential drivers of COVID-19: Neutrophil extracellular traps. *J Exp Med*. 2020;217(6).
4. Leppkes M, Knopf J, Naschberger E, Lindemann A, Singh J, Herrmann I, et al. Vascular occlusion by neutrophil extracellular traps in COVID-19. *EBioMedicine*. 2020;58:102925.
5. Middleton EA, He XY, Denorme F, Campbell RA, Ng D, Salvatore SP, et al. Neutrophil extracellular traps contribute to immunothrombosis in COVID-19 acute respiratory distress syndrome. *Blood*. 2020;136(10):1169-79.
6. Nicolai L, Leunig A, Brambs S, Kaiser R, Weinberger T, Weigand M, et al. Immunothrombotic Dysregulation in COVID-19 Pneumonia is Associated with Respiratory Failure and Coagulopathy. *Circulation*. 2020.
7. Yalavarthi S, Gould TJ, Rao AN, Mazza LF, Morris AE, Nunez-Alvarez C, et al. Release of neutrophil extracellular traps by neutrophils stimulated with antiphospholipid antibodies: a newly identified mechanism of thrombosis in the antiphospholipid syndrome. *Arthritis Rheumatol*. 2015;67(11):2990-3003.
8. Zuo Y, Shi H, Li C, and Knight JS. Antiphospholipid syndrome: a clinical perspective. *Chin Med J (Engl)*. 2020.
9. Abdel-Wahab N, Talathi S, Lopez-Olivo MA, and Suarez-Almazor ME. Risk of developing antiphospholipid antibodies following viral infection: a systematic review and meta-analysis. *Lupus*. 2018;27(4):572-83.
10. Asherson RA, and Cervera R. 'Primary', 'secondary' and other variants of the antiphospholipid syndrome. *Lupus*. 1994;3(4):293-8.
11. Abdel-Wahab N, Lopez-Olivo MA, Pinto-Patarroyo GP, and Suarez-Almazor ME. Systematic review of case reports of antiphospholipid syndrome following infection. *Lupus*. 2016;25(14):1520-31.
12. Sung J, and Anjum S. Coronavirus Disease 2019 (COVID-19) Infection Associated With Antiphospholipid Antibodies and Four-Extremity Deep Vein thrombosis in a Previously Healthy Female. *Cureus*. 2020;12(6):e8408.

13. Zuo Y, Estes SK, Ali RA, Gandhi AA, Yalavarthi S, Shi H, et al. Prothrombotic autoantibodies in serum from patients hospitalized with COVID-19. *Sci Transl Med*. 2020;12(570).
14. Bastard P, Rosen LB, Zhang Q, Michailidis E, Hoffmann HH, Zhang Y, et al. Autoantibodies against type I IFNs in patients with life-threatening COVID-19. *Science*. 2020;370(6515).
15. Zhang Q, Bastard P, Liu Z, Le Pen J, Moncada-Velez M, Chen J, et al. Inborn errors of type I IFN immunity in patients with life-threatening COVID-19. *Science*. 2020;370(6515).
16. Althaus K, Marini I, Zlamal J, Pelzl L, Singh A, Häberle H, et al. Antibody-induced procoagulant platelets in severe COVID-19 infection. *Blood*. 2020.
17. Woodruff MC, Ramonell RP, Nguyen DC, Cashman KS, Saini AS, Haddad NS, et al. Extrafollicular B cell responses correlate with neutralizing antibodies and morbidity in COVID-19. *Nat Immunol*. 2020;21(12):1506-16.
18. Pierangeli SS, Colden-Stanfield M, Liu X, Barker JH, Anderson GL, and Harris EN. Antiphospholipid antibodies from antiphospholipid syndrome patients activate endothelial cells in vitro and in vivo. *Circulation*. 1999;99(15):1997-2002.
19. Simantov R, LaSala JM, Lo SK, Gharavi AE, Sammaritano LR, Salmon JE, et al. Activation of cultured vascular endothelial cells by antiphospholipid antibodies. *J Clin Invest*. 1995;96(5):2211-9.
20. Wang EY, Mao T, Klein J, Dai Y, Huck JD, Liu F, et al. Diverse Functional Autoantibodies in Patients with COVID-19. 2020:2020.12.10.20247205.

ACKNOWLEDGMENTS

The authors thank all the individuals with COVID-19 who participated in this study.

Table 1: Correlation of endothelial cell activation with NET remnants and antiphospholipid antibodies in serum of patients hospitalized with COVID-19						
	E-selectin		VCAM-1		ICAM-1	
	r	p	r	p	r	p
NET remnants						
Cell-free DNA	0.057	ns	0.237	*	0.135	ns
MPO-DNA	0.145	ns	0.256	**	0.277	**
Cit-H3	0.066	ns	0.224	*	0.076	ns
Other biomarkers						
CRP	0.006	ns	0.172	ns	0.003	ns
D-dimer	0.175	ns	0.133	ns	0.258	*
Calprotectin	0.187	*	0.203	*	0.197	*
Antiphospholipid antibodies						
aCL IgG	0.450	****	0.421	****	0.346	***
aCL IgM	0.365	****	0.252	**	0.357	****
aPS/PT IgG	0.439	****	0.252	**	0.299	***
aPS/PT IgM	0.249	**	0.115	ns	0.276	**
ns=not significant; NET=neutrophil extracellular trap; MPO=myeloperoxidase; Cit-H3=citrullinated histone H3; CRP=C-reactive protein; aCL=anticardiolipin; aPS/PT=anti-phosphatidylserine/prothrombin *p<0.05, **p<0.01, ***p<0.001, and **** p<0.0001						

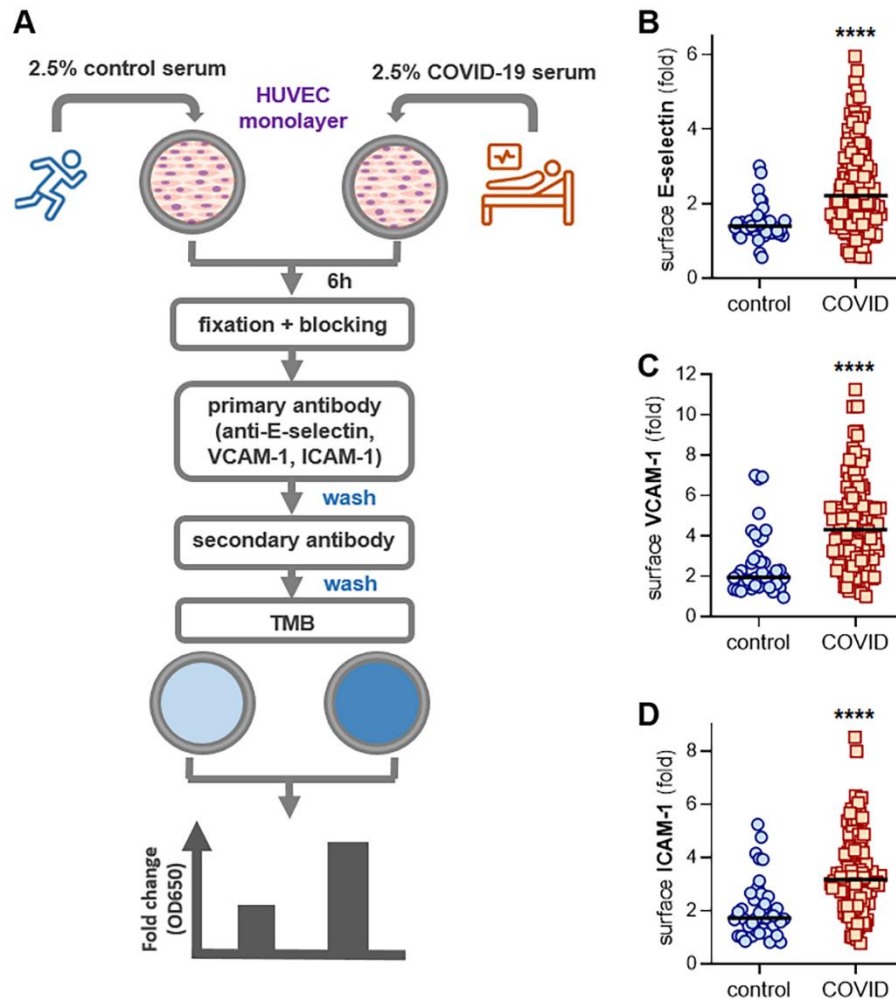


Figure 1: Activation of human umbilical vein endothelial cells (HUVECs) by control or COVID-19 serum. (A) Schematic workflow for in-cell ELISA. HUVECs were cultured for 6 hours with serum from either healthy controls (collected pre-pandemic) or patients hospitalized with COVID-19. Cells were then fixed and surface expression of E-selectin (B), VCAM-1 (C), or ICAM-1 (D) was quantified. Median values are indicated by horizontal lines. Groups were analyzed by Mann-Whitney test; **** $p < 0.0001$.

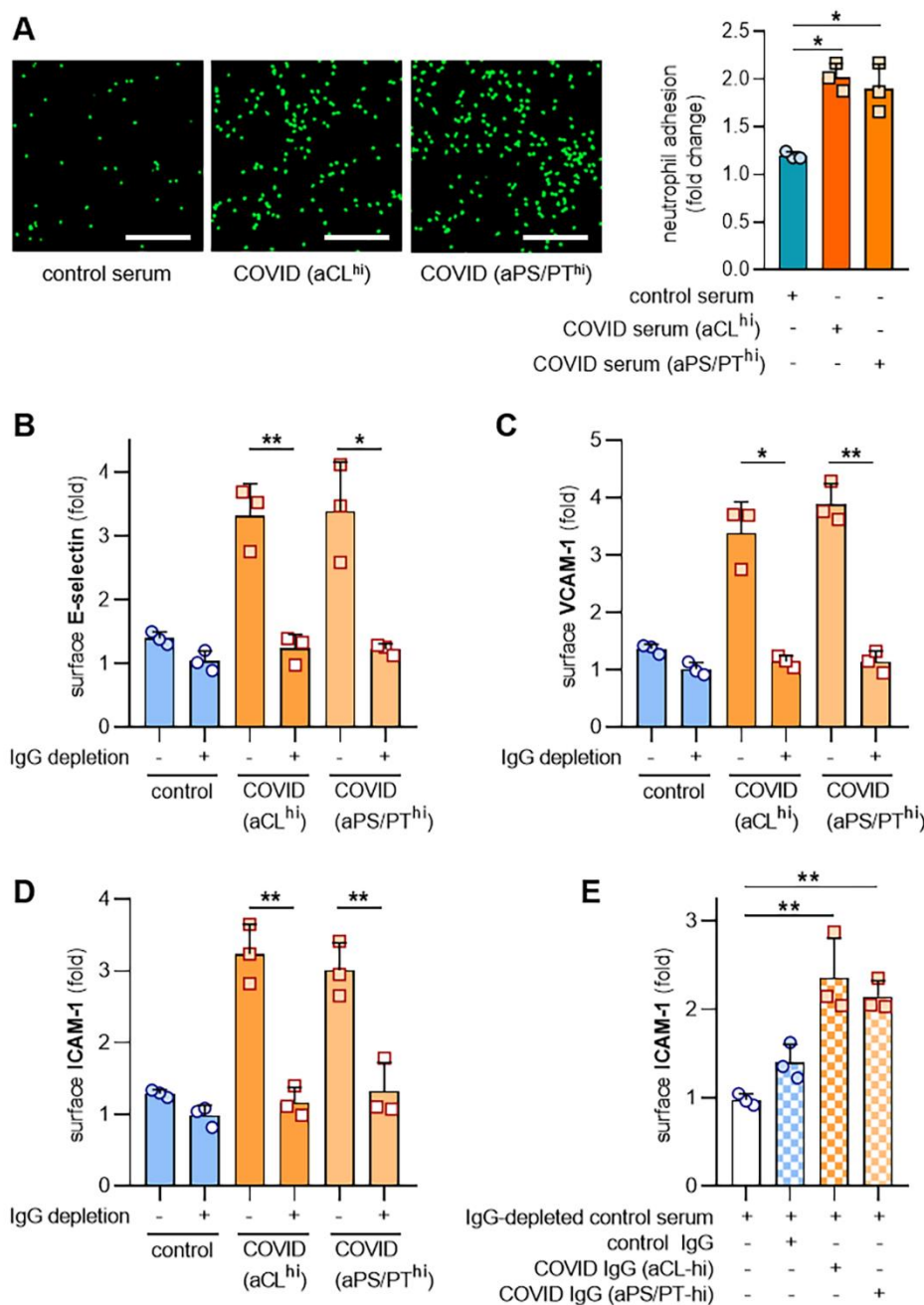


Figure 2: Depletion of IgG from serum with high levels of anticardiolipin (aCL) and anti-phosphatidylserine/prothrombin (aPS/PT) antibodies alleviates HUVEC activation. A, Serum was pooled from 5 patients with high aCL IgG (>40 GPL) or 5 patients with high aPS/PT IgG (>40 IgG units). HUVEC monolayers were then treated with 2.5% COVID or control serum for 4 hours. Calcein-AM-labeled neutrophils were then added as described in Methods. Scale bar=200 microns. Mean \pm standard deviation is presented for n=3 independent experiments; *p <0.05 by one-way ANOVA corrected by Dunnett's test. **B-D,** IgG was depleted from each of the

aforementioned pools. Activation of HUVECs was determined after culture for 6 hours as defined by surface expression of E-selectin (**B**), VCAM-1 (**C**), or ICAM-1 (**D**). The experiment was repeated on 3 different days, and bars represent mean and standard deviation. Groups were compared by 2-sided paired t-test; * $p < 0.05$ and ** $p < 0.01$. **E**, IgG (100 μ g/ml) was purified from the pooled samples referenced in A-C, and then spiked into control serum that had been depleted of IgG. Activation of HUVECs was determined after culture for 6 hours as defined by surface expression of ICAM-1. Groups were compared by one-way ANOVA with correction for multiple comparisons by Tukey's test; ** $p < 0.01$.

SUPPLEMENTARY INFORMATION
Endothelial cell-activating antibodies in COVID-19
Shi et al.

MATERIALS AND METHODS

Serum samples from patients with COVID-19. Blood was collected into serum separator tubes containing clot activator and serum separator gel by a trained hospital phlebotomist. After completion of biochemical testing ordered by the clinician, the samples were released to the research laboratory. Serum samples were immediately divided into small aliquots and stored at -80°C until the time of testing. All 118 patients had a confirmed COVID-19 diagnosis based on U.S. Food and Drug Administration (FDA)-approved RNA testing. This study complied with all relevant ethical regulations, and was approved by the University of Michigan Institutional Review Board (HUM00179409).

Cell culture. Human umbilical vein endothelial cells (HUVECs) were purchased from ATCC and cultured in EBM supplemented with EGM-2MV SingleQuots (Lonza) without hydrocortisone. 10,000 cells/well were seeded into 0.2% gelatin-coated 96-well tissue culture plates the day before experiments. The following day, HUVECs were cultured with 2.5% human serum or IgG at a concentration of 100 µg/ml at 37°C in a humidified atmosphere of 5% CO₂. All experiments were performed using HUVECs of passage 6 or fewer.

Neutrophil adhesion assay. 1x10⁴ HUVECs per well were seeded into a 96-well plate and cultured until confluent. In the BSL-3 facility, the HUVEC monolayer was cultured with 2.5% COVID serum or control serum for 6 hours. Fresh neutrophils isolated from healthy controls were labeled with calcein-AM (C1430, Thermo) for 30 minutes at 37°C. After washing the HUVEC monolayer, 3x10⁵ labeled neutrophils were then added for 20 minutes. After washing with pre-warmed HBSS, adherent neutrophil fluorescence was measured with a microplate fluorescence reader (BioTek) at 485 and 535 nm. After reading, the cells were fixed with 4% PFA for 30 minutes, and images were captured with a Cytation 5 Cell Imaging Multi-Mode Reader (BioTek) through the GFP channel.

IgG depletion from serum. IgG was purified from COVID-19 and control serum with protein G Agarose beads (Pierce). Briefly, 800 µl of protein G agarose beads were washed at least 10 times by PBS. Then, 200 µl of serum was added and incubated with the beads at 4°C overnight. The supernatant was collected after spinning the tube at 2500xg for 5 minutes. The supernatant was the IgG depleted serum. The same volume of serum was incubated without beads under the same conditions as a mock control. Depletion was confirmed by Coomassie-stained gels.

Purification of human IgG fractions from serum. Serum was diluted in IgG binding buffer and passed through a Protein G Agarose column (Pierce) at least 5 times. IgG was then eluted with 0.1 M glycine and neutralized with 1 M Tris. This was followed by overnight dialysis against PBS at 4°C. IgG purity was verified with Coomassie staining, and concentrations were determined by BCA protein assay (Pierce) according to manufacturer's instructions. All IgG samples were determined to have endotoxin level below 0.1 EU/ml by the Pierce LAL Chromogenic Endotoxin Quantitation Kit (A39552) according to manufacturer's instructions. This kit offers high sensitivity with linear detection range of 0.01-1.0 EU/mL.

In-cell ELISA. In the Biosafety Level 3 facility, endothelial cell activation was assessed by an in-cell ELISA, which measured surface expression of E-selectin, ICAM-1, VCAM-1 on endothelial cells. Briefly, confluent monolayers of HUVECs in 96-well microplates were incubated with 2.5% serum or 100 µg/ml purified IgG for 6 hours and then fixed using the same volume of 8% paraformaldehyde for 30 minutes. Cells were blocked with 2x blocking solution (Abcam) at room temperature for 2 hours. After washing with PBS, cells were incubated with 5 µg/ml primary mouse anti-human antibodies against E-selectin (catalog BBA26, R&D), VCAM-1 (catalog BBA5, R&D), or ICAM-1 (ab2213, Abcam) at 4°C overnight. Next, 100 µl of diluted horseradish peroxidase conjugated rabbit anti-mouse IgG (1:2000, Jackson ImmunoResearch) in 1x blocking solution was added and incubated at room temperature for 1 hour. After washing thoroughly, 100 µl of TMB substrate was added blue color development was measured at OD 650 nm with a Cytation 5 Cell Imaging Multi-Mode Reader (BioTek). The signals were corrected by subtracting the mean signal of wells incubated in the absence of the primary antibody from all other readings.

Fc receptor blocking experiment. HUVECs were pretreated with the pan-Fc receptor blocker (1:50, 422301, Biolegend) for 15 minutes, and then incubated with 2.5% COVID serum or control serum for 6 hours.

Quantification of aPL Abs. aPL Abs were quantified in sera using Quanta Lite® ACA IgG, ACA IgM, ACA IgA, aPS/PT IgG, and aPS/PT IgM kits (Inova Diagnostics Inc.) according to the manufacturer's instructions. All assays are approved for clinical use and received 510(k) clearance from the FDA. Quanta Lite® aPL ELISAs (Inova Diagnostics) are well recognized by the international APS research community and are utilized by the largest international APS clinical research network registry, APS ACTION, in its core laboratories as the "gold standard"

for aPL testing [1, 2]. Here, IgG, IgM, and IgA aCL assays were reported in GPL, MPL, and APL units, respectively; and aPS/PT assays were reported in IgG and IgM units, all per the manufacturer's specifications.

Quantification of myeloperoxidase-DNA complexes. Myeloperoxidase-DNA complexes were quantified similarly to what has been previously described [3]. This protocol used several reagents from the Cell Death Detection ELISA kit (Roche). First, a high-binding EIA/RIA 96-well plate (Costar) was coated overnight at 4°C with anti-human myeloperoxidase antibody (Bio-Rad 0400-0002), diluted to a concentration of 1 µg/ml in coating buffer (Cell Death kit). The plate was washed two times with wash buffer (0.05% Tween 20 in PBS), and then blocked with 4% bovine serum albumin in PBS (supplemented with 0.05% Tween 20) for 2 hours at room temperature. The plate was again washed five times, before incubating for 90 minutes at room temperature with 10% serum or plasma in the aforementioned blocking buffer (without Tween 20). The plate was washed five times, and then incubated for 90 minutes at room temperature with 10x anti-DNA antibody (HRP-conjugated; from the Cell Death kit) diluted 1:100 in blocking buffer. After five more washes, the plate was developed with 3,3',5,5'-Tetramethylbenzidine (TMB) substrate (Invitrogen) followed by a 2N sulfuric acid stop solution. Absorbance was measured at a wavelength of 450 nm using a Cytation 5 Cell Imaging Multi-Mode Reader (BioTek). Data were normalized to *in vitro*-prepared NET standards included on every plate, which were quantified based on their DNA content.

Quantification of cell-free DNA. Cell-free DNA was quantified in sera using the Quant-iT PicoGreen dsDNA Assay Kit (Invitrogen, P11496) according to the manufacturer's instructions.

Quantification of Cit-H3. Cit-H3 was quantified in sera using the Citrullinated Histone H3 (clone 11D3) ELISA Kit (Cayman, 501620) according to the manufacturer's instructions.

Quantification of S100A8/A9 (calprotectin). Calprotectin levels were measured with the Human S100A8/S100A9 Heterodimer DuoSet ELISA (DY8226-05, R&D Systems) according to the manufacturer's instructions.

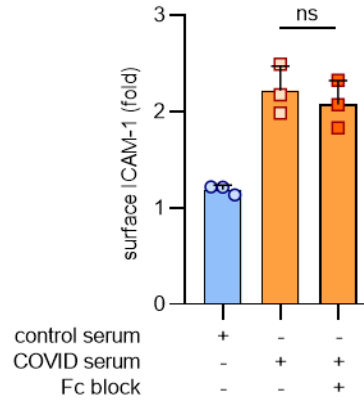
Statistical analysis. Normally-distributed data were analyzed by two-sided t test and skewed data were analyzed by Mann-Whitney test when two groups were analyzed. Correlations were

tested by Spearman's correlation coefficient. Data analysis was with GraphPad Prism software version 8. Statistical significance was defined as $p < 0.05$.

REFERENCES

1. Erkan D, Lockshin MD, members AA. APS ACTION--AntiPhospholipid Syndrome Alliance For Clinical Trials and InternatiOnal Networking. *Lupus*. 2012 Jun; 21(7):695-698.
2. Sciascia S, Willis R, Pengo V, Krilis S, Andrade D, Tektonidou MG, et al. The comparison of real world and core laboratory antiphospholipid antibody ELISA results from antiphospholipid syndrome alliance for clinical trials & international networking (APS ACTION) clinical database and repository analysis. *Thromb Res*. 2019 Mar; 175:32-36.
3. Kessenbrock K, Krumbholz M, Schonermarck U, Back W, Gross WL, Werb Z, et al. Netting neutrophils in autoimmune small-vessel vasculitis. *Nat Med*. 2009 Jun; 15(6):623-625.

Supplementary Table 1: Patient characteristics	
Demographics	
Number of subjects	118
Age (years) ^a	62 ± 17 (25-96)
Hospital day ^b	4 ± 5 (1-25)
Female	55 (47%)
White/Caucasian	47 (40%)
Black/African-American	50 (42%)
Comorbidities	
Diabetes	45 (38%)
Ischemic heart disease	36 (31%)
Renal disease	33 (28%)
Lung disease	29 (25%)
Autoimmune	3 (3%)
Cancer	15 (13%)
History of stroke	11 (9%)
Obesity	50 (42%)
Hypertension	73 (62%)
Immune deficiency	7 (6%)
History of smoking	23 (19%)
Medications	
Hydroxychloroquine	15 (13%)
Anti-IL6 receptor	13 (11%)
ACE inhibitor	5 (4%)
Antibiotic	38 (32%)
Antiviral	3 (3%)
Respiratory status	
Mechanical ventilation	41 (35%)
High-flow oxygen	8 (7%)
Nasal-cannula oxygen	38 (32%)
Room air	31 (26%)
^a Mean ± standard deviation	
^b Median = 3	



Supplementary Figure 1: Blocking Fc receptor does not affect HUVEC activation

triggered by COVID serum. HUVECs were pre-treated with a pan-Fc receptor blocker for 15 minutes before the addition of 2.5% pooled COVID serum. Activation of HUVECs was determined after culture for 6 hours as defined by surface expression of ICAM-1. The experiment was repeated on 3 different days, and bars represent mean and standard deviation. Groups were compared by one-way ANOVA with correction for multiple comparisons by Dunnett's test; ns=not significant.