

# Validating quantitative PCR assays for cell-free DNA detection without DNA extraction: Exercise induced kinetics in systemic lupus erythematosus patients

Elmo W.I. Neuberger<sup>1</sup>, Alexandra Brahmer<sup>1</sup>, Tobias Ehlert<sup>1</sup>, Katrin Kluge<sup>1</sup>, Keito F.A. Philippi<sup>1</sup>, Simone C. Boedecker<sup>2</sup>, Julia Weinmann-Menke<sup>2</sup> and Perikles Simon<sup>1,\*</sup>

<sup>1</sup>Department of Sports Medicine, University of Mainz, Mainz, Germany. Albert-Schweitzer Str. 22, 55128 Mainz, Germany.

<sup>2</sup>Department of Rheumatology and Nephrology, University Medical Center Mainz, Germany. Langenbeckstr. 1, 55101 Mainz, Germany.

\* [simonpc@uni-mainz.de](mailto:simonpc@uni-mainz.de)

## ABSTRACT

Circulating cell-free DNA (cfDNA) has been investigated as a screening tool for many diseases. To avoid expensive and time-consuming DNA isolation, direct quantification PCR assays can be established. However, rigorous validation is required to provide reliable data in the clinical and non-clinical context. Considering International Organization for Standardization, as well as bioanalytical method validation guidelines we provide a comprehensive procedure to validate assays for cfDNA quantification from unpurified blood plasma. A 90 and 222 bp assay was validated to study the kinetics of cfDNA after exercise in patients with systemic lupus erythematosus. The assays showed ultra-low limit of quantification (LOQ) with 0.47 and 0.69 ng/ml, repeatability  $\leq 11.6\%$  (95% CI: 8.1–20.3), and intermediate precision  $\leq 12.1\%$  (95% CI: 9.2–17.7). Incurred sample reanalysis confirmed the precision of the procedure. The additional consideration of pre-analytical factors shows that centrifugation speed and temperature do not change cfDNA concentrations. In SLE patients cfDNA increases ~2 fold after all out walking exercise, normalizing after 60 min of rest. The established assays allow reliable and cost-efficient quantification of cfDNA in minute amounts of plasma in the clinical setting and can be used as a standard to control pre-analytical factors including cfDNA losses during purification.

## Introduction

Circulating cell-free DNA (cfDNA) is recognized to have reasonable prognostic or diagnostic potential in several pathological diseases including cancer, sepsis, and autoimmune diseases such as SLE<sup>1,2</sup>. In 1966 Tan et al. described high levels of cfDNA in serum of SLE patients<sup>3</sup>. Since that time, a plethora of studies confirmed elevated cfDNA concentrations in serum and plasma of SLE patients with active or inactive disease (reviewed in<sup>2</sup>). In patients with autoimmune disease, high levels of cfDNA are considered to be a relevant antigen for auto anti-body development<sup>4-6</sup>. Intriguingly, cfDNA concentrations increase about 10 fold during all out exercise, showing a half-life of ~15 min in the healthy population<sup>7-9</sup>. While regular physical exercise is recommended for SLE patients, and several studies provided reasonable evidence that regular exercise reduces fatigue and increases cardiovascular fitness in SLE patients<sup>10</sup>, the kinetics of cfDNA during exercise in SLE patients are still unknown. A minimal invasive and cost-efficient assay is a valuable tool to monitor cfDNA concentrations, which might be indicative for overtraining or disease remission<sup>11,12</sup>.

Most cfDNA quantification assays require pre-analytical DNA extraction<sup>13</sup>. A process, which is costly, time consuming and has been shown to lead to variable loss of cfDNA depending on the extraction method employed<sup>14,15</sup>. To avoid cfDNA isolation, direct quantification assays have been established<sup>14,16</sup>. Using multilocus primers, which bind various sites in the human genome, a sufficient sensitivity can be reached. The hominoid specific long interspersed element 1 (LINE1) family 2 (L1PA2) is a suitable target, according to its abundance and

medRxiv preprint reports new research that has not been certified by peer review and should not be used to guide clinical practice.

46 A major prerequisite for reliable cfDNA detection is the evaluation of the assay performance. In 2019 the  
47 International Organization for Standardisation (ISO) published a guideline which comprehensively specifies the  
48 requirements for evaluating the performance of quantification methods for nucleic acid target sequences for  
49 quantitative real-time PCR (qPCR) and digital PCR (dPCR)<sup>18</sup>.

50 Based on previous work<sup>19</sup>, we describe the validation of reliable qPCRs assays for the quantification of cfDNA.  
51 Considering the relevant guidelines we emphasize the specificity, precision, including repeatability and  
52 intermediate precision, limit of detection (LOD), limit of quantification (LOQ), linearity, as well as incurred  
53 sample reanalysis. Since cfDNA typically shows a length of about 166bp<sup>20</sup>, the combination of a 90bp assay and  
54 222bp assay enables the evaluation of DNA integrity<sup>21,22</sup>.

55 The assays could be applied successfully to quantify cfDNA samples in the clinical context. We show that exercise  
56 induced cfDNA increases start to decline after 30 min in SLE patients, normalizing after 60 - 90 min. Since  
57 elevated cfDNA concentrations have been discussed to possibly trigger enhanced inflammation or the production  
58 of anti-ds-DNA antibodies, low increases during and rapid decreases after exercise are rather positive aspects of  
59 cfDNA kinetics during exercise in SLE patients. The direct quantification enables a time and cost saving  
60 quantification assay, which further could be standard assay to control for pre-analytical factors including cfDNA  
61 losses during purification. Furthermore, according to its high sensitivity the assay can be used to study cfDNA in  
62 other body liquids, cell culture supernatant.

## 63 Methods

64 **Ethics approval and exercise testing.** SLE patients were recruited at the Department of internal Medicine,  
65 University Medical Center, Mainz, Germany. Patients with a stable immunosuppressive medical therapy and no  
66 active lupus nephritis were asked to participate in an exercise intervention study (ClinicalTrials.gov Identifier:  
67 NCT03942718, date of first registration 08.05.2019)<sup>23</sup>. The registered study aims to evaluate the effects of a 12-  
68 week exercise program on cardiorespiratory fitness. In the context of this assay validation study the samples from  
69 the initial examination time point were used to study the kinetics of cfDNA in SLE patients during and after acute  
70 exercise. The experimental procedures were approved by the Human Ethics Committee of Rhineland-Palatine and  
71 were in line with the Declaration of Helsinki of the World Medical Association. All participants gave their  
72 informed consent for study participation. A total of 28 eligible study participants performed a stepwise exercise  
73 test until volitional exhaustion with a modified walking protocol<sup>23</sup>. Speed and elevation of the treadmill were  
74 increased stepwise every three minutes until the participants stopped the test volitionally. Heart rate and respiratory  
75 gas exchange were monitored continuously.

Characteristics of the study subjects	Mean	± SD
Age (years)	49,42	8,70
Weight (kg)	77,53	18,54
Height (cm)	166,43	8,34
BMI	27,96	6,07
SLEDAI	6,50	4,42
VO <sub>2</sub> peak (ml/min/kg)	24,34	5,04
Exercise time until exhaustion (min)	13,61	3,67
Medication, n (%)	22 (78%)	
Steroids	17 (61%)	
Hydrochloroquine	14 (50%)	
Belimumab	4 (14%)	
Cyclophosphamide	1 (3%)	
Azathioprine	2 (7%)	
Mycophenolate mofetil	7 (25%)	
No medication, n (%)	6 (21%)	

76 **Table 1.** SLE patients' characteristics. SLEDAI = Systemic Lupus Erythematosus Disease Activity Index, BMI =  
77 Body Mass Index.

78 **Blood sample collection.** Venous blood samples from the cubital vein were collected before, directly after,  
79 and 90 min after the exercise test. The utilized blood collection products are listed in Supplementary Table S1.  
80 The samples were centrifuged immediately after drawing two times at 2500 x g for 15 min at room temperature  
81 (RT), to collect platelet-free plasma.<sup>24</sup> Capillary blood samples were collected from the fingertip and stored at 4°C  
82 before centrifugation at 600 x g for 10 min. For comparison of centrifugation protocols, venous blood samples  
83 were centrifuged as indicated.

84 **Assay validation material.** Linearity and accuracy of the direct quantification method was tested on a custom-  
85 made 401-bp fragment from the L1PA2 family (Supplementary Table S2). The fragment was synthesized by  
86 Eurofins MWG Operon, cloned into a pEX-A plasmid (Eurofins MWG Operon), amplified in bacteria before DNA  
87 isolation with QIAprep Spin Miniprep Kit (Qiagen, Hilden, Germany). After EcoRI restriction the 401 bp  
88 Fragment was gel purified with QIAquick Gel Extraction Kit (Qiagen, Hilden, Germany). The concentration was  
89 determined with a NanoDrop 3300 fluorospectrometer (Thermo Fisher Scientific, Inc., Waltham, MA) using  
90 Quant-iT™ PicoGreen dye (Thermo Fisher Scientific, Inc., Waltham, MA). For precision studies, a pool of venous  
91 plasma from six healthy subjects before (PRE exercise sample) and after exercise (POST exercise sample) was  
92 used.

93 **Sample preparation and qPCR.** Plasma samples were diluted 1:10 in UltraPure™ DNase/RNase-Free H<sub>2</sub>O  
94 (Invitrogen, Waltham, MA). For the qPCR, 2 µl of the diluted plasma, were mixed with 12 µl master-mix, 1 µl  
95 primer mix, and measured in triplicates with a final volume of 5 µl. The primer sequences are listed in  
96 Supplementary Table S3. The final concentrations in the PCR reaction are 1.2X HiFi buffer (BioCat, Heidelberg,  
97 Germany), 0.3 mM of each dNTP (Carl Roth, Karlsruhe, Germany), 0.15X SYBR Green (Sigma, Taufkirchen,  
98 Germany), 0.04 IU Velocity Polymerase (BioCat, Heidelberg, Germany), and 140 nM of each primer. For  
99 amplification a CFX384 system with the following protocol was used: 98°C for 2 min followed by 35 cycles of  
100 95°C for 10 sec (denaturation) and 64°C for 10 sec (annealing/extension) including the plate read. A melt curve  
101 from 70 – 95°C with 0.5 °C increments for 10 sec finished each run. If the triplicates of the samples show a SD  
102 C<sub>q</sub> > 0.4, native plasma samples were re-diluted and reanalyzed.

103 **In silico calculation of L1PA2 copy numbers per genome.** To determine the number of targets for the  
104 L1PA2\_90bp and L1PA2\_222bp primer pairs in the human genome (GRCh38/hg38), the UCSC Genome Browser  
105 *In-Silico PCR* tool was used (<https://genome.ucsc.edu/cgi-bin/hgPcr>). The Max Product Size (Maximum size of  
106 amplified region) was set to 660 bp, which equals the predicted maximal amplification rate of the polymerase  
107 during 10s amplification. Min Perfect Match (Number of bases that match exactly on 3' end of primers) was set to  
108 19 bp. The predicted sequences per chromosome and the length distribution are provided in Supplementary Fig.  
109 S4 and Table S5.

110 **Calculation of cfDNA concentration in plasma samples.** To determine the cfDNA concentration in  
111 (ng/ml) from the C<sub>q</sub> values of samples the following calculation is applied:  $\text{ng/ml} \triangleq \text{pg}/\mu\text{l} = 10^{(\text{C}_q - \text{intercept})/\text{slope}} / 5\mu\text{l}$   
112  $/ (1/75) * 3.23 \text{ pg} / (3416 \text{ for L1PA2 } 90\text{bp or } 3237 \text{ for L1PA2 } 222\text{bp})$ . Using the slope and the intercept from the  
113 validated standard curve the total number of copies per 5µl qPCR reaction are calculated. A division by 5 results  
114 in copy numbers per µl. The copy numbers per µl plasma are calculated by considering the total dilution factor of  
115 plasma 1/75 (plasma dilution 1/10 and qPCR dilution: 2µl template per 15µl reaction). The copy number per µl is  
116 divided by the number of predicted sequences in the human genome (3416 for the L1PA2\_90bp and 3237 for the  
117 L1PA2\_222bp). The result reflects the number of genome equivalents (GE) per ml plasma. The resulting GE are  
118 multiplied with 3.23 pg (the expected weight of a haploid genome<sup>25</sup>) to calculate the pg concentration per µl  
119 plasma, equaling ng/ml.

120 **PCR run interplate calibration.** The CFX384 real-time system calculates the C<sub>q</sub> values based on the crossing  
121 point of the fluorescence traces with an auto-calculated threshold line. The threshold is dependent on the total  
122 number of samples and fluorescence intensity. To correct for inter-plate differences, two reference samples are  
123 measured in each run. For the analysis of the results, the threshold is adapted so that the mean of the C<sub>q</sub> values of  
124 the reference samples equals the pre-defined mean C<sub>q</sub> value. The pre-defined mean C<sub>q</sub> value is based on the mean  
125 autocalculated C<sub>q</sub> values of 10 PCR runs from two different operators. The indicated reference samples are a pre-  
126 and a post-exercise plasma samples from a single subject. Typical amplification curves are shown in  
127 Supplementary Fig. S6.

128 **Determination of assay performance.** For the determination of the *dynamic range*, *assay linearity*, *LOD* and  
129 *LOQ* the purified L1PA2 DNA fragment was spiked into mouse plasma (1:10 final dilution). Mouse plasma is a  
130 relevant sample matrix and does not contain the human specific L1PA2 sequences. Three independent standard  
131 curves were prepared for each of the assays on different days. Each concentration (1 x 10<sup>6</sup> - 25 copies per well)  
132 was pipetted in septet replicates (Fig. 1). H<sub>2</sub>O and mouse plasma NTC controls, as well as the reference samples  
133 were pipetted on each plate. For the determination of the LOQ the results from all standard curves were combined  
134 to generate imprecision profiles using the Variance Function Program VFP (v1.2) with R (v3.6.3) (Fig. 1). The

135 LOD was defined as the lowest concentration of the target analyte which can be detected with a 95% detection  
136 rate<sup>26,27</sup>. Where applicable, the CLSI guideline EP17-A2 were used, defining a limit of blank (LOB) =  $\text{Mean}_{\text{copy}}$   
137  $\text{number blank} + 1.645 \times \text{SD}_{\text{copy number blank}}$  and  $\text{LOD} = \text{LOB} + 1.645 \times \text{SD}_{\text{low copy number sample}}$ <sup>28</sup>.

138 *Assay imprecision.* To evaluate the influence of the plasma dilution process, 20 replicates of the PRE and POST  
139 samples were measured in a single run. 10 replicates were measured from the same diluted plasma pool and 10  
140 replicates were diluted 1:10 uniquely. The coefficient of variation (CV) was calculated with the formula  $\text{CV} =$   
141  $(\text{Standard Deviation} / \text{Mean}) * 100$ . To estimate the repeatability and intermediate precision 20 replicates were run  
142 in duplicates over 10 different PCR runs.

143 *Direct quantification compared to kit isolation.* To compare the concentration of cfDNA before and after DNA isolation  
144 using custom DNA extraction kits, plasma was aliquoted in 15 tubes and frozen at -20°C. Five of the aliquots (1ml  
145 plasma) were purified with the QIAamp® Circulating Nucleic Acid kit (Qiagen, Hilden, Germany) (Purification  
146 kit 1), and the NucleoSnap cfDNA kit for cell-free DNA from plasma (Macherey-Nagel, Düren, Germany)  
147 (Purification kit 2), respectively. Additionally, 5 aliquots of 400µl plasma were isolated with the QIAamp DNA  
148 Blood Mini Kit (Qiagen, Hilden, Germany) (Purification kit3). All samples were eluted in H<sub>2</sub>O (1/10 of input  
149 volume). For the direct quantification, from each plasma aliquot a dilution was prepared. All samples were  
150 measured after a single freeze thaw cycle.

151 *Incurred sample reanalysis:* To verify the reliability of the cfDNA concentration in the study samples, a subset of two  
152 samples from each qPCR run was re-analyzed in the subsequent run. The percentage difference of the cfDNA  
153 concentration between the first and the repeated measurement is determined with the following equation:  $(\text{Repeat}$   
154  $- \text{First}) / \text{Mean} * 100$ , according to the Bioanalytical Method Validation Guidance for Industry<sup>29</sup>.

155 *Storage stability:* To determine the stability of plasma dilutions 20 samples of a former study were reanalyzed after  
156 > 2 month of storage at -20°C. To determine the storage stability of whole blood before centrifugation, four venous  
157 and capillary samples were taken consecutively and centrifuged at 2500 x g for 10 min directly after blood drawing,  
158 after 60 min, 90 min, or 180 min.

159 **Data analysis.** The qPCR analysis was performed with the CFX Manager software Version: 3.1.1517.0823.  
160 Python (v3.7.6) with ‘matplotlib’ (v3.1.1), and ‘seaborn’ (v0.9.0), and R (v3.6.3) with ggplot2 (v3.3.2) were used  
161 for descriptive analysis. The imprecision calculation were performed using the R ‘VFP’ package (v1.2). Linear  
162 mixed models were conducted with the ‘lme4’ package (v1.1.23), to determine if capillary and venous cfDNA  
163 levels differ and respond differently to exercise. The ‘emmeans’ package (v1.4.8) was used to compute tukey  
164 corrected P values. Pearsons r or Spearman’s rho were calculated for normally or not normally distributed data,  
165 respectively.

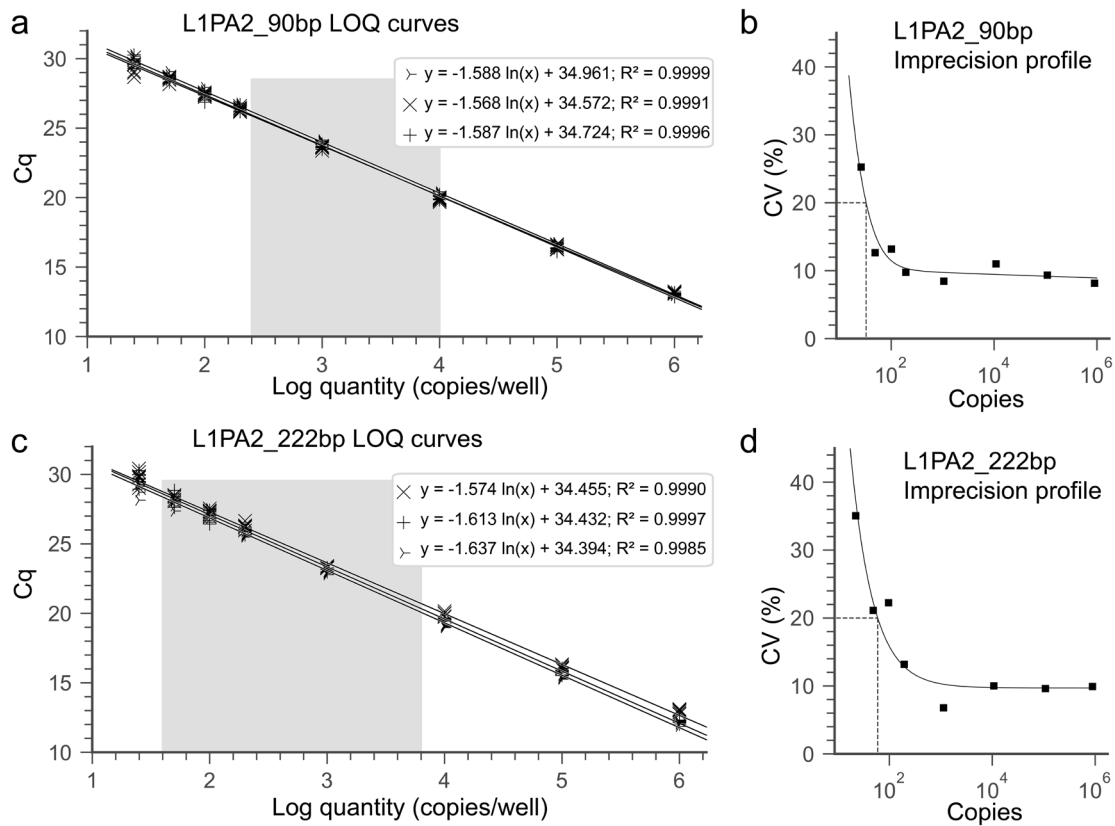
## 166 Results

167 **Characteristics of SLE patients.** A total of 28 SLE patients (27 female, 1 male) were eligible for the study  
168 and participated in the performance diagnostic test without adverse events. The patients’ characteristics (Table 1)  
169 indicate a higher body mass index (BMI), and lower physical fitness (VO<sub>2</sub>peak) compared to the healthy  
170 population<sup>30</sup>.

171 **Assay performance.** *Dilution linearity and dynamic range.* The independent LOQ curves show similar slope and  
172 y-intercept (Fig. 1). The efficiencies for the different standard curves are slightly lower than 90%. Ranging between  
173 87.77 and 89.25% for the L1PA2\_90bp assay and between 84.19 and 88.75% for L1PA2\_222bp assay.

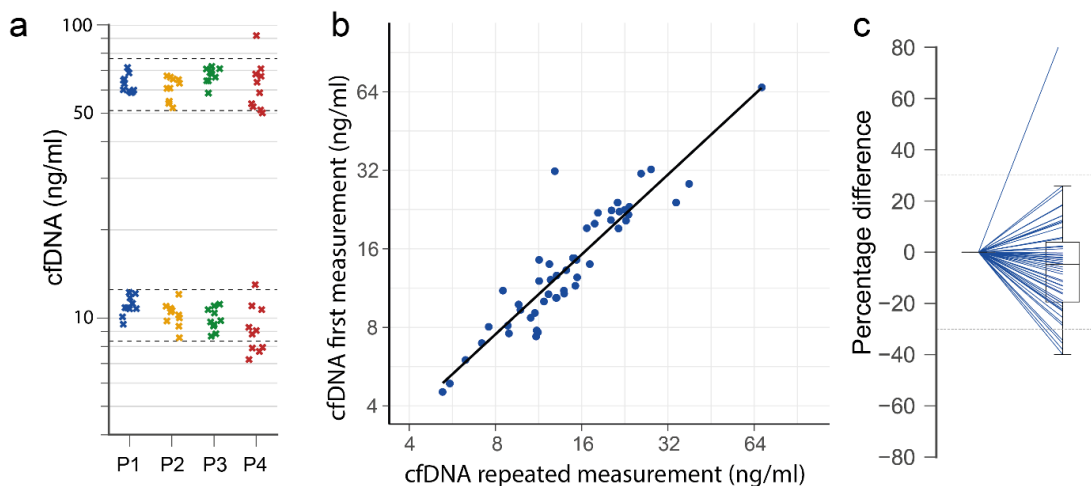
174 *LOD and LOQ.* All replicates of the low copy samples (25 copies) were detectable with the L1PA2\_90bp and the  
175 L1PA2\_222bp assay, not reaching LOD (Fig. 1). Of note, as shown in Supplemental Fig. S6, the NTCs of the  
176 L1PA2\_90bp assay produce some background signal, which needs to be distinguishable from low copy samples.  
177 Since the data were normally distributed with homogenous variances, the LOB and LOQ were calculated according  
178 to the CLSI guideline<sup>28</sup>. The L1PA2\_90bp assay shows a LOB of 8.39 copies and LOD of 18.59 copies. The LOQ,  
179 which was derived from the imprecision profile was 32.5 copies for the L1PA2\_90bp and 59.26 copies for the  
180 L1PA2\_222bp (Fig. 1), equaling a concentration of 0.47 ng/ml and 0.69 ng/ml, respectively.

181 *Imprecision studies.* The CVs were similar between the pooled or uniquely diluted plasma samples with 7.32% and  
182 8.77% (PRE exercise sample), and 6.67% or 8.51% for the POST exercise sample (L1PA2\_90bp assay) (Fig. 2a).  
183 For the L1PA2\_222bp the CVs were 9.17 and 9.37% for the PRE exercise and 7.55 and 8.56 for the post exercise  
184 samples. The precision calculation for the measurements of the PRE and POST samples in repeated runs, resulted  
185 in a repeatability ≤ 11.59% (95% CI: 8.10 – 20.34) for the two assays.



186

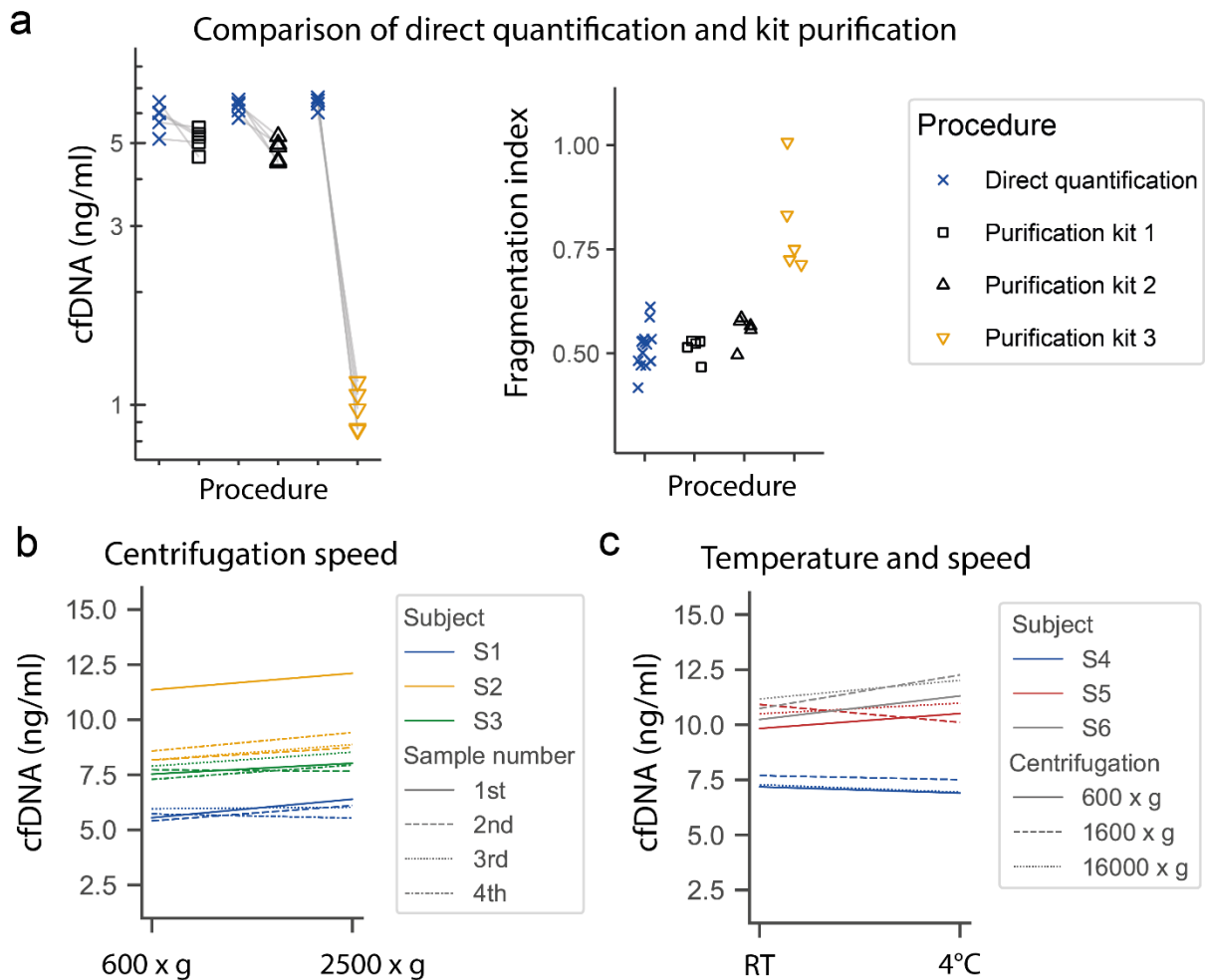
187 **Figure 1.** Standard curves and imprecision profiles for the L1PA2\_90bp assay (**a, b**) and the L1PA2\_222bp assay  
 188 (**c, d**). Three independent standard curves, with septets per concentration were prepared for each assay. The  
 189 imprecision profiles were calculated with the formulas:  $\sigma^2 = 31.37 + 0.011 \times U^{1.975}$  and  $\sigma^2 = (6.10 + 0.097 \times U)^2$   
 190 for the 90 bp (**b**) and 222 bp assay (**d**), respectively. The grey area indicates the quantification range of cfDNA  
 191 concentrations in this study. Cq = cycle quantification value, LOQ = lower limit of quantification, CV = coefficient  
 192 of variation.



193

194 **Figure 2.** Precision of the L1PA2\_90bp assay. (**a**) The same pool of plasma dilution of a low and high  
 195 concentration sample was measured 10 times (P1), the same plasma was individually diluted 10 times (P2), the  
 196 plasma dilution was measured in 10 consecutive runs in duplicate (P3 = mean of duplicates after inter-plate  
 197 calibration, P4 = mean of duplicates before inter-plate calibration). The dashed lines indicate  $\pm 20\%$  of the nominal  
 198 mean of conditions P1-3. Incurred sample reanalysis. From each run of the study samples, two samples were re-  
 199 analyzed. (**b**) Correlation of the first and second measurement. (**c**) Percentage difference between original and  
 200 second measurement.

201 *Inter-run calibration.* After the inter-run calibration the intermediate precision, calculated from 10 consecutive qPCR  
 202 runs, reduced for the LIPA2\_90bp assay from 23.80% (95% CI: 17.96 – 35.31) to 11.62% (95% CI: 8.77 – 17.22)  
 203 (PRE sample), and from 24.75% (96% CI: 18.47 – 37.51) to 8.46% (95% CI: 6.40 – 12.45) (POST sample) (Fig.  
 204 2a). For the LIPA2\_222bp assay the intermediate precision reduced for the PRE sample from 18.01% (95% CI:  
 205 12.58 – 31.61) to 12.97 (95% CI: 8.90- 18.24), and the POST sample from 21.54% (95% CI: 16.04 – 32.78) to  
 206 12.06% (95% CI: 9.16 – 17.69).



207  
 208 **Figure 3.** Direct quantification of cfDNA compared to DNA purification and influence of centrifugation speed  
 209 and temperature on cfDNA concentration. (a) Plasma aliquots of the same sample were directly quantified or  
 210 analyzed after DNA isolation with custom DNA isolation kits, to determine the cfDNA concentration (left) and  
 211 the fragmentation index (right). (b) From different subjects (S1-S3) four samples were consecutively collected in  
 212 different blood containers, centrifuged at 600 x g or 2500 x g for 10 min and measured with the LIPA2\_90bp  
 213 assay. (c) From each subject a single blood sample was collected and centrifuged consecutively at indicated speed  
 214 at 4°C or room temperature (RT) and measured in duplicate, mean values are illustrated.

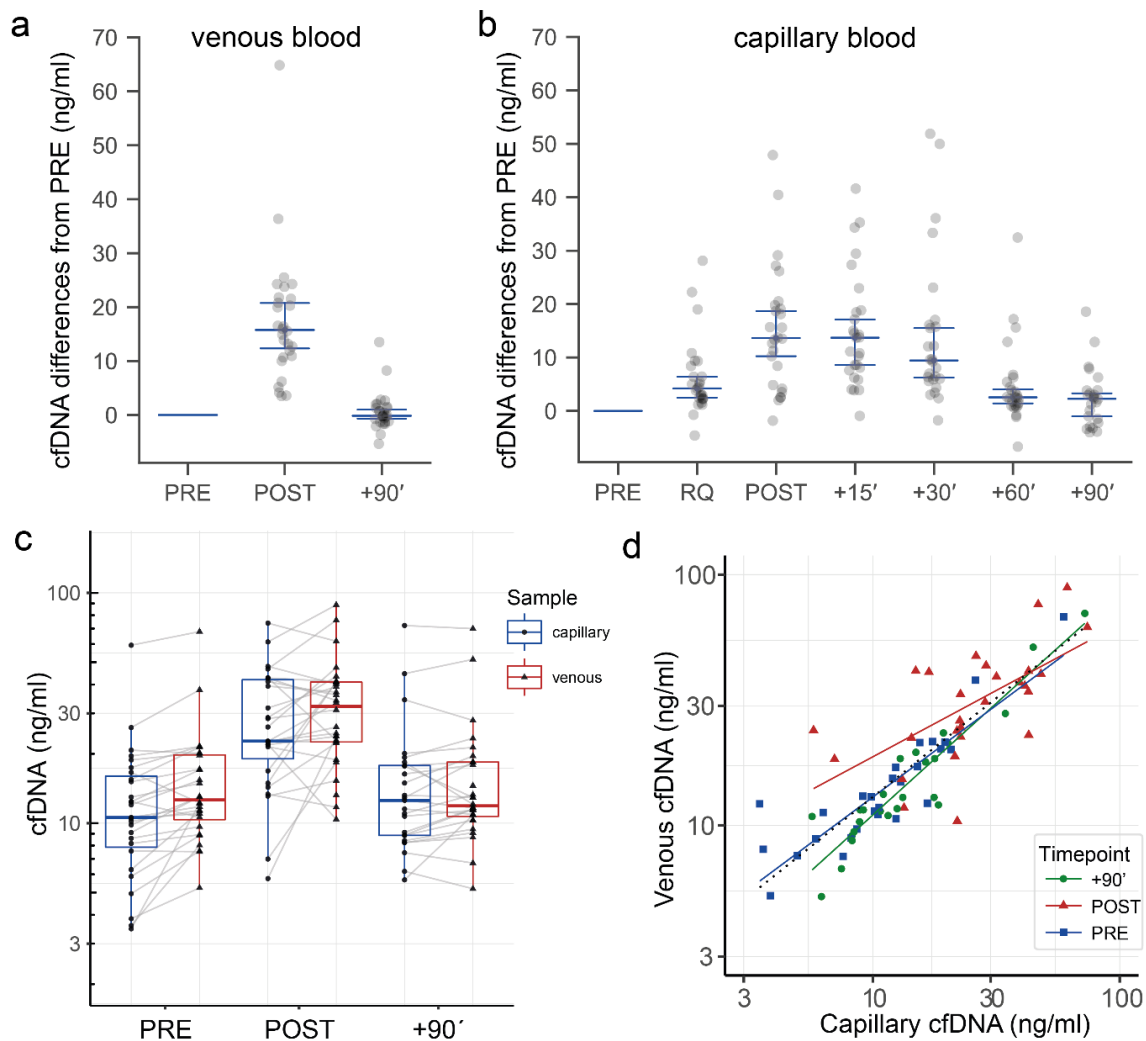
215 **Stability of plasma dilutions.** Plasma samples can be stored at -20°C or -80°C for years without affecting  
 216 cfDNA concentration<sup>31</sup>. To determine the stability of 1:10 plasma dilutions, 20 diluted samples were re-analyzed  
 217 with the LIPA2\_90bp assay after storage for > 2 month at -20°C. cfDNA concentrations did not differ significantly  
 218 (P = 0.35) and no degradation was obvious after a repeated freeze-thaw cycle. Prolonged storage of whole blood  
 219 (up to 180 min) before centrifugation did not lead to relevant cfDNA concentration changes (Supplementary Fig.  
 220 S7).

221 **Effects of cfDNA purification.** The use of specific DNA isolation kits for cfDNA isolation from plasma  
 222 (Purification kit 1 and 2) slightly affects the cfDNA concentration and DNA integrity (Fig. 3a). During the isolation  
 223 process about 12% (± 9.5) and 23% (± 6.2) are lost with Purification kit 1 or 2, respectively. A kit for whole blood  
 224 DNA isolation (Purification kit 3) leads to relevant DNA losses of about 84% and increased DNA integrity, which  
 225 indicates a loss of short DNA fragments.

226 **Influence of centrifugation speed or temperature.** As shown in Fig. 3b and 3c, centrifugation speed and  
227 temperature does not influence the cfDNA concentration in venous plasma. The concentration differences are  
228 within the assay precision of the L1PA2\_90bp assay. Notably, as shown in Fig. 3b in one subject the first of 4  
229 taken samples shows higher cfDNA levels (independent from centrifugation speed), indicating that the first sample  
230 should be discarded.

231 **Incurred sample reanalysis.** During the course of the study ~17% of the SLE study samples were reanalyzed.  
232 The cfDNA concentrations correlate well between first and repeated analysis ( $r=0.925$ ,  $p<0.0001$ ) (Fig. 2b).  
233 Among the reanalyzed samples, 5 samples (9.16%) measured with the L1PA2\_90bp assay show a difference  $>$   
234  $\pm 30\%$  between the initial and the repeated measurement (Fig. 2c). 25.53% of the reanalyzed samples show a  
235 difference  $> \pm 30\%$  between first and repeated measurement in the L1PA2\_222bp assay.

236 **cfDNA measurement in study samples.** A total of 280 study samples were measured with each of the assays.  
237 Seven (2.5%) of the samples measured with the L1PA2\_90bp, and 21 (7.5%) measured with the L1PA2\_222bp  
238 assay showed repeatedly high SD of Cq values and were declared to be not measurable.



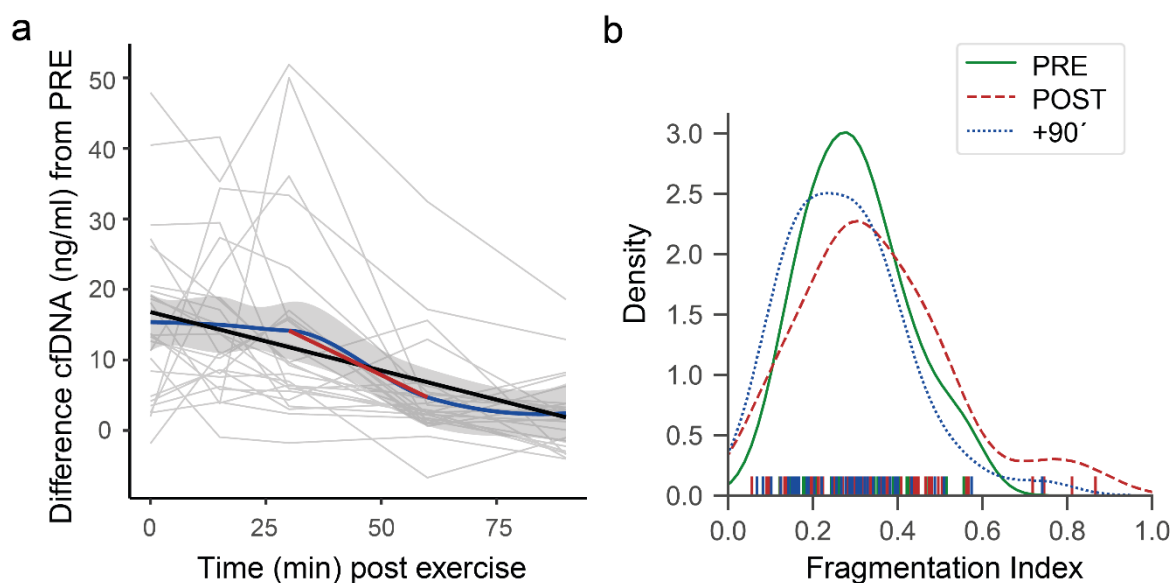
239 **Figure 4.** Kinetics of venous and capillary cfDNA measured with the L1PA2\_90bp assay before and after exercise.  
240 Differences of cfDNA from PRE samples during and after exercise in venous plasma samples (a) and capillary  
241 plasma samples (b) (median and 95% CI are illustrated). (c) Boxplots of cfDNA concentration in capillary and  
242 venous plasma samples. (d) Correlation between venous and capillary cfDNA concentrations.

244 **Kinetics of cfDNA after exercise.** The estimated means of the SLE patients' venous cfDNA levels increased  
245 significantly ~2.1 fold from 13.9 ng/ml (95% CI: 10.4–18.8) to 29.6 ng/ml (95% CI: 22.0–39.9) and decreased to  
246 14.1 ng/ml (95% CI: 10.5–19.9) 90 min after walking exercise (Fig. 4c). Similarly, the capillary samples increased  
247 significantly ~2.2 fold from 11.1 ng/ml (95% CI: 8.0–15.4) to 24.8 ng/ml (95% CI: 17.9–34.4) and decreased to  
248

249 13.6 ng/ml (95%CI: 10.0–18.4). After 90 min the concentrations declined to PRE exercise values again. A detailed  
250 results table for the multiple comparisons is given in Supplementary Table S8 and S9. Fig. 4a and 4b display the  
251 differences of cfDNA levels from the PRE value.

252 The comparison between venous and capillary cfDNA concentrations (Fig. 4d) shows an overall correlation of  $R^2$   
253 = 0.774,  $p < 0.0001$  (dotted black line). The correlation between venous and capillary samples is higher for the  
254 PRE exercise ( $R^2 = 0.933$ ,  $p < 0.0001$ ), and +90 min samples ( $R^2 = 0.974$ ,  $p < 0.0001$ ) compared to POST exercise  
255 samples ( $\rho = 0.726$ ,  $p = 0.0002$ ).

256 As indicated in Fig. 5a cfDNA remains increased until 30 min post exercise. The linear regression across all time  
257 points (black line) indicates a half-life of ~30 min (slope = -0.167, intercept = 16.87). Between 30 min post exercise  
258 and 60 min post exercise the cfDNA concentrations show the highest decay rate. The linear regression between  
259 +30 and +60 min indicates a half-life of about ~15 min (red regression line, slope = -0.315, intercept = 23.61). The  
260 fragmentation index, calculated as the quotient of the concentrations of the longer L1PA2\_222bp fragments and  
261 the shorter L1PA2\_90bp fragments, increases from  $0.33 \pm 0.23$  ng/ml at the PRE time point to  $0.35 \pm 0.23$  ng/ml  
262 post exercise, and decreases to  $0.32 \pm 0.26$  ng/ml after 90 min (Fig. 5b).



263  
264 **Figure 5.** cfDNA decay and fragmentation index. (a) The ‘loess’ regression line (blue, with 95% CI in grey)  
265 indicates that levels of cfDNA remain increased until 30 min post exercise and decrease most strongly between  
266 +30’ and +60’ (red linear regression line). (b) Distribution of the fragmentation index of all study samples.

## 267 Discussion

268 During the last years, cfDNA has been increasingly studied for its prognostic or diagnostic potential in various  
269 clinical fields<sup>2,32,33</sup>. A prerequisite to use cfDNA levels for monitoring applications is to ensure reliable and  
270 reproducible quantification<sup>34</sup>. The ISO guideline ISO 20395:2019 specifies the requirements for evaluating the  
271 performance of quantification methods for nucleic acid target sequences for qPCR and dPCR experiments<sup>18</sup>. The  
272 guideline provides a profound background to validate qPCR assays, comprising the MIQE and relevant CLSI  
273 guidelines. To compare the cfDNA concentrations of the SLE study samples over multiple runs, we implemented  
274 an inter-plate calibration procedure which allows reliable comparison of cfDNA concentrations between different  
275 qPCR runs. To ensure the reproducibility of the direct quantification method in plasma of SLE patient who receive  
276 medication we applied incurred sample re-analysis, to verify the concentration of cfDNA<sup>35</sup>.

277 The, established L1PA2\_90bp and L1PA2\_222bp qPCR assays enable reliable direct quantification of cfDNA in  
278 minute amounts of plasma samples. A unique advantage of the assays is that the plasma samples do not need to be  
279 purified. A step which is time and cost consuming and can introduce errors in the quantification process. As shown  
280 in Fig. 3a, especially DNA isolation kits, which are not specifically established to isolate cfDNA from plasma can  
281 lead to reduced cfDNA concentrations and the loss of short DNA fragments<sup>15,36</sup>. Importantly, our assay could be  
282 used as a standard to control for DNA losses and to estimate the integrity of the isolated DNA samples.

283 At the time, there is no defined number of replicates to determine LOQ, whereas a minimum of 10 replicates in  
284 total per concentration is recommended<sup>18</sup>. For the precision studies, pooled PRE and POST exercise plasma were



285 used representing low and high copy number samples. The CV for all samples, were below 10%, indicating  
286 sufficient precision to clearly discriminate the effects of exercise. To determine the relative repeatability and  
287 relative run-to-run variation standard deviations, duplicates of the low and high copy plasma pools were measured  
288 in 10 consecutive qPCR runs. All precision estimations were below 12.1%.

289 Whenever samples are not analyzed in the same run, it is important to take inter-run calibration into account. For  
290 qPCR assays this is of unique importance because the relationship between quantification cycle and relative  
291 quantity is run dependent<sup>37</sup>. The baseline correction of each qPCR run is depending on the total number of samples  
292 and the fluorescence intensity<sup>37</sup>. Here, we provided experimental proof that the use of two inter-run calibrators  
293 reduced the intermediate precision between 8.07% and 16.29%.

294 A number of pre-analytical variables can affect the results of cfDNA measurement<sup>15,38</sup>. As reviewed by Ungerer  
295 et al.<sup>15</sup> the influence of centrifugation speed is still discussed controversially, whereas a second centrifugation step  
296 is recommended<sup>38</sup>. Our results indicate that centrifugation at 600 x g compared to 2500 or 16.000 x g does not  
297 relevantly influence cfDNA concentrations. The detectable differences were within the assay precision. Notably,  
298 we avoided untarred centrifuges, and disturbances of the cell pellet during pipetting. Similar to other studies we  
299 did not detect cfDNA changes after prolonged storage of EDTA whole blood samples to several hours<sup>39,40</sup>.

300 According to the simpler, and less invasive sampling technique, capillary plasma samples are a reasonable sample  
301 source, which can be collected more frequently. The comparison of venous and capillary samples shows high  
302 congruence. Notably, repeatedly collected capillary samples show a higher variance of cfDNA concentrations  
303 compared to venous samples, which is not related to assay imprecision (as indicated in Supplementary Fig. S7).  
304 The reason is not clarified in detail, and the intra-individual variance needs further systematic evaluation.

305 Studies indicate that SLE patients show higher cfDNA concentrations compared to the healthy population, and  
306 that cfDNA concentrations are related to disease activity<sup>12,41</sup>. Exercise is recommended for the treatment of SLE  
307 patients<sup>42</sup>. However, the kinetics of cfDNA after exercise has not been studied. After walking until exhaustion, the  
308 studied SLE patients showed lower fold-changes compared to healthy subjects, which is likely related to exercise  
309 intensity, time until exhaustion, and total energy expenditure<sup>7,14,43</sup>. cfDNA concentrations normalized 60-90 min  
310 after exercise in most of the patients (Fig. 4 and Fig. 5), showing no significant differences from the PRE cfDNA  
311 values (Supplementary Tables S8 and S8). Since elevated cfDNA concentrations have been discussed to possibly  
312 trigger enhanced inflammation<sup>44</sup>, or the production of anti-ds-DNA antibodies<sup>5</sup>, low increases and a rapid decrease  
313 are positive aspects of cfDNA kinetics in SLE patients. With the established time and costs efficient assay we  
314 determined the cfDNA kinetics in exercising SLE patients for the first time, underlining that exercise does not has  
315 a negative impact on the levels of cfDNA.

316

## 317 References

- 318 1. Bronkhorst, A. J., Ungerer, V. & Holdenrieder, S. The emerging role of cell-free DNA as a molecular  
319 marker for cancer management. *Biomol. Detect. Quantif.* **17**, 100087 (2019).
- 320 2. Duvvuri, B. & Lood, C. Cell-Free DNA as a Biomarker in Autoimmune Rheumatic Diseases. *Front.*  
321 *Immunol.* **10**, 502 (2019).
- 322 3. Tan, E. M., Schur, P. H., Carr, R. I. & Kunkel, H. G. Deoxybonucleic acid (DNA) and antibodies to DNA  
323 in the serum of patients with systemic lupus erythematosus. *J. Clin. Invest.* **45**, 1732–1740 (1966).
- 324 4. Sisirak, V. *et al.* Digestion of Chromatin in Apoptotic Cell Microparticles Prevents Autoimmunity. *Cell*  
325 **166**, 88–101 (2016).
- 326 5. Bai, Y., Tong, Y., Liu, Y. & Hu, H. Self-dsDNA in the pathogenesis of systemic lupus erythematosus.  
327 *Clin. Exp. Immunol.* **191**, 1–10 (2018).
- 328 6. Rekvig, O. P. The dsDNA, Anti-dsDNA Antibody, and Lupus Nephritis: What We Agree on, What Must  
329 Be Done, and What the Best Strategy Forward Could Be. *Front. Immunol.* **10**, (2019).
- 330 7. Beiter, T., Fragasso, A., Hudemann, J., Nieß, A. M. & Simon, P. Short-Term Treadmill Running as a  
331 Model for Studying Cell-Free DNA Kinetics In Vivo. *Clin. Chem.* **57**, 633–636 (2011).
- 332 8. Breitbach, S., Sterzing, B., Magallanes, C., Tug, S. & Simon, P. Direct measurement of cell-free DNA  
333 from serially collected capillary plasma during incremental exercise. *J. Appl. Physiol.* **117**, 119–130  
334 (2014).

- 335 9. Dennis Lo, Y. M. *et al.* Rapid clearance of fetal DNA from maternal plasma. *Am. J. Hum. Genet.* **64**, 218–  
336 224 (1999).
- 337 10. O’Dwyer, T., Durcan, L. & Wilson, F. Exercise and physical activity in systemic lupus erythematosus: A  
338 systematic review with meta-analyses. *Semin. Arthritis Rheum.* **47**, 204–215 (2017).
- 339 11. Fatouros, I. G. *et al.* Cell-Free Plasma DNA as a Novel Marker of Aseptic Inflammation Severity Related  
340 to Exercise Overtraining. *Clin. Chem.* **52**, 1820–1824 (2006).
- 341 12. Tug, S. *et al.* Correlation between cell free DNA levels and medical evaluation of disease progression in  
342 systemic lupus erythematosus patients. *Cell. Immunol.* **292**, 32–39 (2014).
- 343 13. Meddeb, R., Pisareva, E. & Thierry, A. R. Guidelines for the Preanalytical Conditions for Analyzing  
344 Circulating Cell-Free DNA. *Clin. Chem.* **65**, 623–633 (2019).
- 345 14. Breitbach, S. *et al.* Direct Quantification of Cell-Free, Circulating DNA from Unpurified Plasma. *PLoS*  
346 *One* **9**, e87838 (2014).
- 347 15. Ungerer, V., Bronkhorst, A. J. & Holdenrieder, S. Preanalytical variables that affect the outcome of cell-  
348 free DNA measurements. *Crit. Rev. Clin. Lab. Sci.* **57**, 484–507 (2020).
- 349 16. Umetani, N. *et al.* Increased Integrity of Free Circulating DNA in Sera of Patients with Colorectal or  
350 Periampullary Cancer: Direct Quantitative PCR for ALU Repeats. *Clin. Chem.* **52**, 1062–1069 (2006).
- 351 17. Ovchinnikov, I., Rubin, A. & Swergold, G. D. Tracing the LINEs of human evolution. *Proc. Natl. Acad.*  
352 *Sci.* **99**, 10522–10527 (2002).
- 353 18. ISO. Biotechnology — Requirements for evaluating the performance of quantification methods for nucleic  
354 acid target sequences — qPCR and dPCR. ISO 20395:2019(en).  
355 <https://www.iso.org/obp/ui#iso:std:iso:20395:ed-1:v1:en> (Accessed August 2020).
- 356 19. Breitbach, S. *et al.* Direct Quantification of Cell-Free, Circulating DNA from Unpurified Plasma. *PLoS*  
357 *One* **9**, e87838 (2014).
- 358 20. Jiang, P. & Lo, Y. M. D. The Long and Short of Circulating Cell-Free DNA and the Ins and Outs of  
359 Molecular Diagnostics. *Trends Genet.* **32**, 360–371 (2016).
- 360 21. Holdenrieder, S., Burges, A., Reich, O., Spelsberg, F. W. & Stieber, P. DNA Integrity in Plasma and Serum  
361 of Patients with Malignant and Benign Diseases. *Ann. N. Y. Acad. Sci.* **1137**, 162–170 (2008).
- 362 22. Meddeb, R. *et al.* Quantifying circulating cell-free DNA in humans. *Sci. Rep.* **9**, 5220 (2019).
- 363 23. Boedecker, S. C. *et al.* Twelve-Week Internet-Based Individualized Exercise Program in Adults With  
364 Systemic Lupus Erythematosus: Protocol for a Randomized Controlled Trial. *JMIR Res. Protoc.* **9**, e18291  
365 (2020).
- 366 24. Lacroix, R. *et al.* Impact of pre-analytical parameters on the measurement of circulating microparticles:  
367 towards standardization of protocol. *J. Thromb. Haemost.* **10**, 437–46 (2012).
- 368 25. Piovesan, A. *et al.* On the length, weight and GC content of the human genome. *BMC Res. Notes* (2019).  
369 doi:10.1186/s13104-019-4137-z
- 370 26. Forootan, A. *et al.* Methods to determine limit of detection and limit of quantification in quantitative real-  
371 time PCR (qPCR). *Biomol. Detect. Quantif.* **12**, 1–6 (2017).
- 372 27. Bustin, S. A. *et al.* The MIQE Guidelines: Minimum Information for Publication of Quantitative Real-  
373 Time PCR Experiments. *Clin. Chem.* **55**, 611–622 (2009).
- 374 28. Pierson-Perry, J. F. *et al.* *Evaluation of Detection Capability for Clinical Laboratory Measurement*  
375 *Procedures; Approved Guidance-Second Edition. EPI7-A2. Clinical and Laboratory Standards Institute*  
376 (2012).
- 377 29. U.S. Department of Health and Human Services Food and Drug Administration Center for Drug  
378 Evaluation and Research. *Bioanalytical Method Validation: Guidance for Industry. Bioanalytical Method*  
379 *Validation: Guidance for Industry* (2018).
- 380 30. Rapp, D., Scharhag, J., Wagenpfeil, S. & Scholl, J. Reference values for peak oxygen uptake: cross-  
381 sectional analysis of cycle ergometry-based cardiopulmonary exercise tests of 10 090 adult German

- 382 volunteers from the Prevention First Registry. *BMJ Open* **8**, e018697 (2018).
- 383 31. Meddeb, R., Pisareva, E. & Thierry, A. R. Guidelines for the Preanalytical Conditions for Analyzing  
384 Circulating Cell-Free DNA. *Clin. Chem.* **65**, 623–633 (2019).
- 385 32. Thierry, A. R., El Messaoudi, S., Gahan, P. B., Anker, P. & Stroun, M. Origins, structures, and functions  
386 of circulating DNA in oncology. *Cancer Metastasis Rev.* **35**, 347–376 (2016).
- 387 33. Lehmann-Werman, R. *et al.* Identification of tissue-specific cell death using methylation patterns of  
388 circulating DNA. *Proc. Natl. Acad. Sci. U. S. A.* **113**, E1826–E1834 (2016).
- 389 34. Milosevic, D. *et al.* Applying Standard Clinical Chemistry Assay Validation to Droplet Digital PCR  
390 Quantitative Liquid Biopsy Testing. *Clin. Chem.* **64**, 1732–1742 (2018).
- 391 35. FDA. *Bioanalytical Method Validation Guidance for Industry.* (2018).
- 392 36. Fleischhacker, M. *et al.* Methods for isolation of cell-free plasma DNA strongly affect DNA yield. *Clin.*  
393 *Chim. Acta* (2011). doi:10.1016/j.cca.2011.07.011
- 394 37. Hellemans, J., Mortier, G., De Paepe, A., Speleman, F. & Vandesompele, J. qBase relative quantification  
395 framework and software for management and automated analysis of real-time quantitative PCR data.  
396 *Genome Biol.* **8**, R19 (2007).
- 397 38. Fleischhacker, M. & Schmidt, B. Pre-analytical issues in liquid biopsy-where do we stand? *J. Lab. Med.*  
398 **44**, 117–142 (2020).
- 399 39. Lam, N. Y. L., Rainer, T. H., Chiu, R. W. K. & Lo, Y. M. D. EDTA Is a Better Anticoagulant than Heparin  
400 or Citrate for Delayed Blood Processing for Plasma DNA Analysis. *Clin. Chem.* **50**, 256–257 (2004).
- 401 40. Kang, Q. *et al.* Comparative analysis of circulating tumor DNA stability In K3EDTA, Streck, and CellSave  
402 blood collection tubes. *Clin. Biochem.* **49**, 1354–1360 (2016).
- 403 41. Xu, Y. *et al.* High levels of circulating cell-free DNA are a biomarker of active SLE. *Eur. J. Clin. Invest.*  
404 **48**, e13015 (2018).
- 405 42. Fanouriakis, A. *et al.* 2019 update of the EULAR recommendations for the management of systemic lupus  
406 erythematosus. *Ann. Rheum. Dis.* **78**, 736–745 (2019).
- 407 43. Tug, S. *et al.* Exploring the Potential of Cell-Free-DNA Measurements After an Exhaustive Cycle-  
408 Ergometer Test as a Marker for Performance-Related Parameters. *Int. J. Sports Physiol. Perform.* **12**, 597–  
409 604 (2017).
- 410 44. Korabecna, M. *et al.* Cell-free DNA in plasma as an essential immune system regulator. *Sci. Rep.* **10**,  
411 17478 (2020).

412

## 413 **Funding statement**

414 The study was funded by the internal research funding of the Johannes Gutenberg-University of Mainz. The  
415 funders had no role in study design, data collection and analysis, decision to publish, or preparation of the  
416 manuscript.

## 417 **Data availability**

418 All data are available from the corresponding author on reasonable request.

## 419 **Competing interests**

420 The authors have declared no competing interest.