

1 Using ICD-10-based Social Determinants of Health Categories to Assess Patients Risk for Acute
2 Care Utilization

3
4 Authors: Peter H. Nguyen, MD¹, James Wang, MD¹, Pamela Garcia-Filion, PhD¹, Deborah
5 Dominick, LCSW², Hamed Abbaszadegan, MD, MBA^{1,3}, Graciela Gonzalez Hernandez, PhD⁴,
6 Karen O'Connor⁴, Shakaib U. Rehman, MD^{1,3}, Sarada S. Panchanathan, MD, MS^{1*}

7
8 Affiliation:

- 9 1. Department of Biomedical Informatics, College of Medicine, University of Arizona
10 College of Medicine – Phoenix, 475 N 5th St., Phoenix, AZ, United States
11 2. Department of Social Work, Phoenix VA Healthcare System, 650 E Indian School Rd,
12 Phoenix, AZ, United States
13 3. Department of Clinical Informatics, Phoenix VA Healthcare System, 650 E Indian
14 School Rd, Phoenix, AZ, United States
15 4. Department of Biostatistics, Epidemiology, and Informatics, Perelman School of
16 Medicine, University of Pennsylvania, 3400 Civic Center Boulevard, Building 421,
17 Philadelphia, PA, United States

18
19 *Corresponding Author

20
21 Key Words: “Social Determinants of Health (SDoH)”, “Population Health”, “Risk Modeling”,
22 “Electronic Health Records”, “Quality Improvement”

23 **ABSTRACT**

24 **Background:** There has been an increasing recognition of the influence of social, behavioral,
25 economic, and environmental factors on overall patient health. The purpose of this project was to
26 leverage the ICD-10 codes to identify and link social determinants of health (SDoH) to patients
27 with a high probability of utilizing acute care services and to determine if social service
28 intervention reduced care utilization.

29 **Methods:** We analyzed retrospective data for active patients at a Department of Veterans Affairs
30 Medical Center (VAMC) from 2015-2017. Eleven categories of SDoH were developed based on
31 existing literature of the social determinants; the relevant ICD-10 codes were divided among
32 these categories. Emergency Room (ER) visits, hospital admissions, and social work visits were
33 determined for each patient in the cohort.

34 **Results:** In a cohort of 44,401 patients, the presence of ICD-10 codes within the EHR in the
35 11 SDoH categories was positively correlated with increased acute care utilization. Veterans
36 with at least one SDoH risk factor were 71% (95%CI: 68% - 75%) more likely to use the ED and
37 71% (95%CI: 65%-77%) more likely to be admitted to the hospital. Utilization decreased with
38 social service interventions.

39 **Conclusion:** This project demonstrates a potentially meaningful method to capture patient social
40 risk profiles through existing EHR data in the form of ICD-10 codes, which can be used to
41 identify the highest risk patients for intervention with the understanding that not all SDoH codes
42 are uniformly used and some SDoHs may not be captured.

43 **INTRODUCTION**

44 Social determinants of Health (SDoH) describe several factors that have become growing areas
45 of interest in healthcare due to their impact on patient health and well-being. The World Health
46 Organization define SDoH as “[t]he conditions in which people are born, grow, live, work, and
47 age”(1). While SDoH are commonly thought of only in terms of socioeconomic factors, the term
48 actually broadly encompasses 1) health-related behaviors, 2) socioeconomic factors, and
49 3) environmental factors (2). There are a variety of factors that comprise SDoH such as tobacco
50 use, diet and exercise, substance use, education, employment, income, family and social support,
51 community safety, and physical environment safety (3).

52 In 2007, Dr. Steven Schroeder published an article in the New England Journal of Medicine in
53 which he referenced the impact of social and behavioral factors on health and premature death.
54 The combined contribution of social, environmental, and behavioral factors on a patient’s risk
55 for premature death was estimated to be as high as 60%, with genetics contributing 30%, and
56 medical care providing only 10% (4). It is worth noting how low the impact of medical care was
57 estimated to be relative to SDoH.

58 Ten years after that article, Dr. Sanne Magnan reiterated the importance of SDoH, referencing a
59 model from the University of Wisconsin Population Health Institute’s County Health Rankings
60 & Roadmaps program (2). This model was designed to help identify the factors that impact
61 health in terms of quality of life and longevity in order to stimulate discussion and action in the
62 form of potential changes to policies and programs (5). The County Health Rankings model also
63 illustrated the significant impact of the social determinants on health outcomes, but did not
64 include genetics in its factors influencing health outcomes, as the purpose of this specific model
65 was to look at modifiable factors that could be affected by policy changes. It is interesting to note

66 that, in the County Health Rankings model, modifying health behaviors, social & economic
67 factors, and physical environment could collectively contribute up to 80% towards improving
68 health versus only 20% from modifying clinical care issues. This research again strikingly shows
69 the relatively low impact of direct clinical care, suggesting that SDoH represent a high yield, yet
70 untapped potential for making significant improvements in patient outcomes in healthcare.
71 The literature has numerous examples describing the impact of different social determinants on
72 health outcomes. Braveman and Gottlieb observed that lower educational status and income were
73 associated with decreased life expectancy at age 25 and increased presence of chronic disease
74 respectively (6). Yelin et al. noted in the literature that poverty appeared to be associated with
75 worse systemic lupus erythematosus disease damage (7). Joynt et al. suspected in 2012 that 30-
76 day readmission rates are driven more by a hospital's patient population and the resources of the
77 community in which it is located than internal factors relating to the hospital itself (8). This
78 appeared to be supported by a recent study by Hu et al. in 2018 demonstrating that a high area
79 deprivation index (ADI) score, which reflects how socioeconomically disadvantaged a
80 geographic region is, was associated with a significantly higher 30-day readmission risk than a
81 lower ADI score (9).

82 Despite the mounting evidence regarding the role of SDoH on health outcomes, progress in
83 integrating their use has been slow. One of the significant barriers in the past has been in
84 determining a good method to capture the patients' SDoH profile, though this has become easier
85 in recent years as ICD-10 codes have valid ways to represent many of them to some extent. More
86 recently, the American Medical Association and United Healthcare have collaborated to plan the
87 development of up to two dozen new ICD-10 codes to further identify SDoH risk and integrate it
88 into care (10). The purpose of this project was to leverage the ICD-10 codes to identify and link

89 SDoH to patients with a high probability of utilizing acute care services and to determine if
90 social service intervention reduced care utilization.

91

92 **MATERIALS AND METHODS**

93 **Patient population**

94 The data analysis was performed using patient encounter data for an active veteran patient
95 population from January 2017 to December 2017 for a VAMC in a major metropolitan area. The
96 patient cohort was comprised of veterans with an active encounter during two timeframes: in
97 2017 and from 2015 to 2016. Active encounter data from 2017 were compared to encounter data
98 in the previous two years to examine utilization patterns relative to presence of SDoH and social
99 services intervention. An additional inclusion criterion for this cohort was availability of a means
100 test data within the past five years; the means test includes data on income and employment.

101

102 **Exclusion criteria**

103 Test patients and deceased patients were excluded from the dataset. The Charlson Clinical
104 Comorbidity Index (CCCI) of co-morbidities was determined for each patient based on
105 encounter data in 2017 (11). This was used to measure the presence and the degree of major
106 chronic comorbidities (e.g., heart disease, cancer, etc.). Patients with a CCCI greater than zero
107 (i.e., presence of co-morbidities) were excluded from the analysis cohort to reduce bias towards
108 acute care utilization given burden due to major chronic comorbidities.

109

110 **Data source**

111 Patient encounter data were extracted from the Regional Clinical Data Warehouse for the
 112 VAMC. Microsoft Structured Query Language (SQL) was used for all data querying purposes.

113

114 **Identifying Social Determinants of Health Risk**

115 A total of 11 SDoH risk factor categories were determined using previous SDoH work by
 116 Schroeder and the Kaiser Family Foundation (3,4). The risk factors were organized by clustering
 117 SDoH that were deemed applicable to the VAMC population and that could be readily extracted
 118 from the EHR. Schroeder identified that social factors, environmental exposures, and behavioral
 119 patterns were modifiable factors influencing health outcomes beyond health care itself. The
 120 Kaiser Family Foundation identified 6 major categories which were further subdivided into 29
 121 minor categories. The category of the Health Care System (including coverage and access to a
 122 primary care physician) was excluded since the entire study was completed with active patients
 123 within a single location within the VA system. The category of food was expanded to include
 124 exercise, and categories that have with significant social and medical impact were added (mental
 125 health challenges and tobacco, alcohol, and substance use). The final SDoH categories used for
 126 this study are listed in Table 1.

127

128 **Table 1. SDoH categories with sample ICD-10 codes and associated social services.**

SDoH Category	Associated Social Services	ICD-10 codes	Example specific codes
Diet and Exercise	<ul style="list-style-type: none"> • Social Work • Caregiver Support Services 	<ul style="list-style-type: none"> • E66 • Z71.3, Z71.82, Z72.3, Z72.4 	E66.3 Overweight Z72.3 Lack of physical exercise
Employment	<ul style="list-style-type: none"> • Social Work • OEF/OIF Support Group (Military-to-veteran transitions) • Case Management 	<ul style="list-style-type: none"> • Z56 	Z56.0 Unemployment, unspecified Z56.2 Threat of job loss
Family/Social Support	<ul style="list-style-type: none"> • Peer Support 	<ul style="list-style-type: none"> • Z63 	Z63.0 Problems in relationship with spouse or partner Z63.31 Absence of family member due to military deployment

Tobacco Use	<ul style="list-style-type: none"> • Social Work • SARRTP (Substance Abuse Clinic) • Case Management 	<ul style="list-style-type: none"> • F17.2 • Z71.6, Z72.0 	F17.213 Nicotine dependence, cigarettes, in withdrawal Z71.6 Tobacco abuse counseling
Education	<ul style="list-style-type: none"> • Social Work • OEF/OIF Support Group 	<ul style="list-style-type: none"> • Z55 	Z55.0 Illiteracy and low-level literacy Z55.3 Underachievement in school
Community Support/Safety	<ul style="list-style-type: none"> • Peer Support • OEF/OIF Support Group • Community support • Caregiver Support Services 	<ul style="list-style-type: none"> • Z65.1-Z65.3, Z65.8-Z65.9 • Z73.6, Z74, Z75.3-Z75.4 	Z65.2 Problems related to release from prison Z75.4 Unavailability and inaccessibility of other helping agencies
Alcohol Use	<ul style="list-style-type: none"> • Social Work • SARRTP • Case Management 	<ul style="list-style-type: none"> • F10 • Z71.41 	F10.20 Uncomplicated Alcohol dependence Z71.41 Alcohol abuse counseling and surveillance of alcoholic
Income	<ul style="list-style-type: none"> • Social Work • OEF/OIF Support Group • Case Management 	<ul style="list-style-type: none"> • Z59.5-Z59.9 	Z59.5 Extreme poverty Z59.7 Insufficient social insurance and welfare support
Mental Health	<ul style="list-style-type: none"> • Social Work • Case Management 	<ul style="list-style-type: none"> • F20.3, F20.9 • F40.01, F40.10, F40.11, F40.9 • F25, F29, F31 - F39 except F34.0 	T14.91 Suicide attempt F20.9 Schizophrenia, unspecified
Substance Use	<ul style="list-style-type: none"> • Social Work • SARRTP • Case Management 	<ul style="list-style-type: none"> • F19 • F11 	F11.23 Opioid dependence with withdrawal F19.931 Other psychoactive substance use, unspecified with withdrawal delirium
Housing Insecurity	<ul style="list-style-type: none"> • Social Work • HUDVASH (Homeless Support Services) • Case Management 	<ul style="list-style-type: none"> • Z59.0, Z59.1, Z59.4 	Z59.0 Homelessness Z59.1 Inadequate housing

130 When reviewing patient records, one point was assigned per SDoH risk category in which at
131 least one corresponding ICD-10 code was present. A patient could be assigned a total possible
132 cumulative risk score of 11 points if they were found to have at least one ICD-
133 10 corresponding to each category. Multiple codes within the same category were therefore
134 considered to be one entity for the purposes of this work as the emphasis was placed more on
135 how many categories of SDoH were relevant rather than the number of codes per category were
136 present. This would prevent duplication of similar codes from over-estimating the impact
137 of SDoH due to concepts being associated with each other or overlapping in context (i.e. Z65.2 -
138 problems related to release from prison vs. Z65.1 - imprisonment and other incarceration).

139

140 **Identifying Acute Care Utilization**

141 Acute care utilization is defined for the purposes of this project as Emergency Room (ER) visits
142 and hospital admissions. The number of ER visits for patients in the cohort was queried with
143 SQL. Hospitalizations were queried by searching for ER disposition fields which corresponded
144 to hospital admissions from the ER since all hospitalizations at this facility are routed through
145 the ER. Both the number of ER visits and the number of resulting hospitalizations were separated
146 by year to correspond to years 2016 and 2017.

147

148 **Identifying the Impacts of Social Services Utilization**

149 The impact of social services utilization on acute care utilization was examined by ascertaining
150 social services utilization in 2017 and from 2015 to 2016, and then comparing acute care
151 utilization rates between patients that received any versus no social services utilization. The total
152 amount of utilization by social services were calculated and used in this analysis. Patients were
153 categorized as having either an increase (including newly seen) or decrease (including none) in

154 social service visits in 2017 compared to the prior time period (2015-2016). The patient cohort
155 was further narrowed to patients who had at least one SDoH risk factor based on ICD-10 analysis
156 above and excluded patients who had no acute care services in either 2016 or 2017.

157

158 **Data Analysis**

159 The t-test function was used in order to calculate statistical significance. Charts were created
160 with Microsoft Excel, and error bars represent 95% confidence intervals. STATA software was
161 used to perform logistic regression analysis to examine the relationship between
162 individual SDoH risk factors, as well as the total number of SDoH risk factors with ER visits and
163 hospitalizations.

164

165 **RESULTS**

166 Based on the initial inclusion criteria parameters, an initial cohort of 59,134 patients was
167 determined. After exclusion criteria stratification, the resulting cohort for January 2017 to
168 December 2017 was 44,401. Of this cohort, 9,379 patients had ER visits and 2,566 patients had
169 hospitalizations during this time interval. Of the total cohort of 44,401, the population had an
170 average age of 58 years +/- 17.4 years and were predominantly male (91%), non-Hispanic
171 (83.2%), and Caucasian (91.8%). In terms of SDoH risk factors in the cohort, 53.3% of patients
172 had at least one risk factor. Details about these demographics and number of SDoH risk factors
173 identified per individual are summarized in Tables 2 and 3, respectively.

174 **Table 2: Summary demographics in the acute care utilization cohort.**

175

Acute Care Utilization Analysis	
Cohort Size	44401
Age (Average/StDev)	58/17.4
Gender	
Male	91.0%
Female	9.0%
Ethnicity	
Hispanic	12.2%
Non-Hispanic	83.2%
Unknown / Unreported Ethnicity	4.6%
Race	
Caucasian	81.8%
Black	8.4%
Asian	0.9%
American Indian / Alaskan	1.9%
Native Hawaiian or Other Pacific	0.8%
Unknown / Unreported Race	6.3%

176

177

178 **Table 3. Number of SDoH Risk Factors for patient in acute care utilization cohort**

Number of Risk Factors	N
0	20746
1	14552
2	5344
3	2085
4	894
5	459
6	182
7	91
8	35
9	13

179

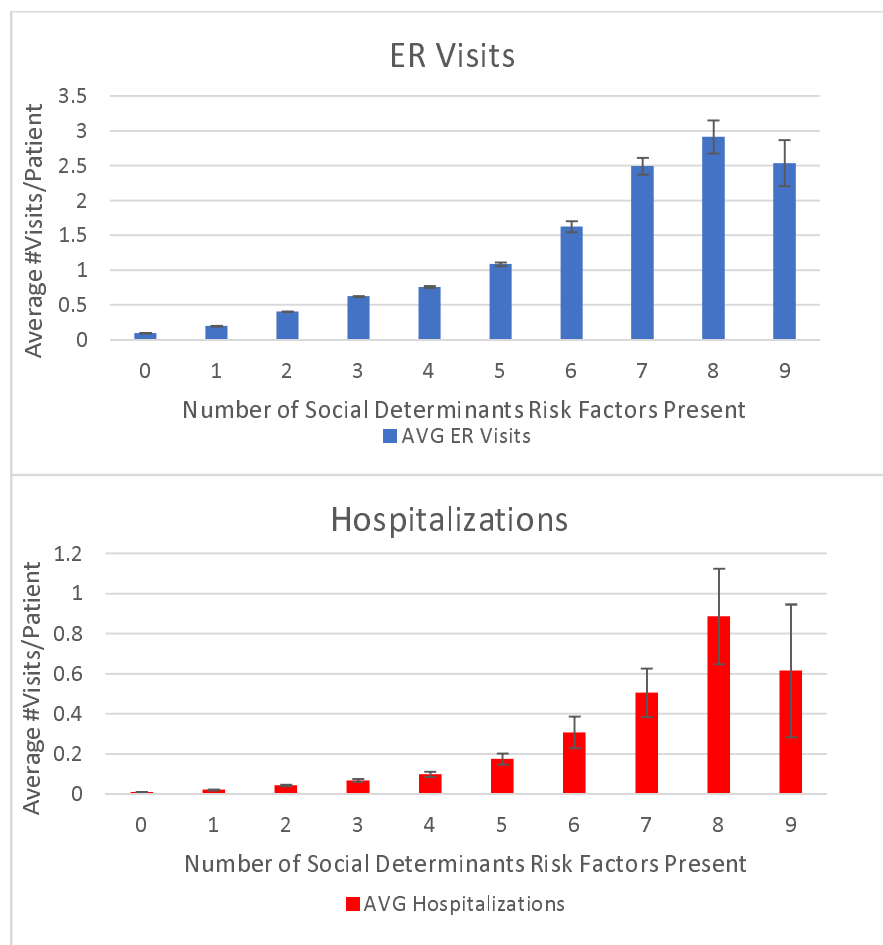
180 Patients who had more SDoH risk factors identified using the ICD-10 categories were likely to

181 have more ER visits and hospitalizations in a given year. Among patients with at least

182 seven SDoH risk factors, the annual ER visit rate was 26 times higher and the annual

183 hospitalization rate was 54 times higher compared to those without a SDoH. The acute care

184 utilization rates by number of SDoH categories is represented in Fig 1.



185

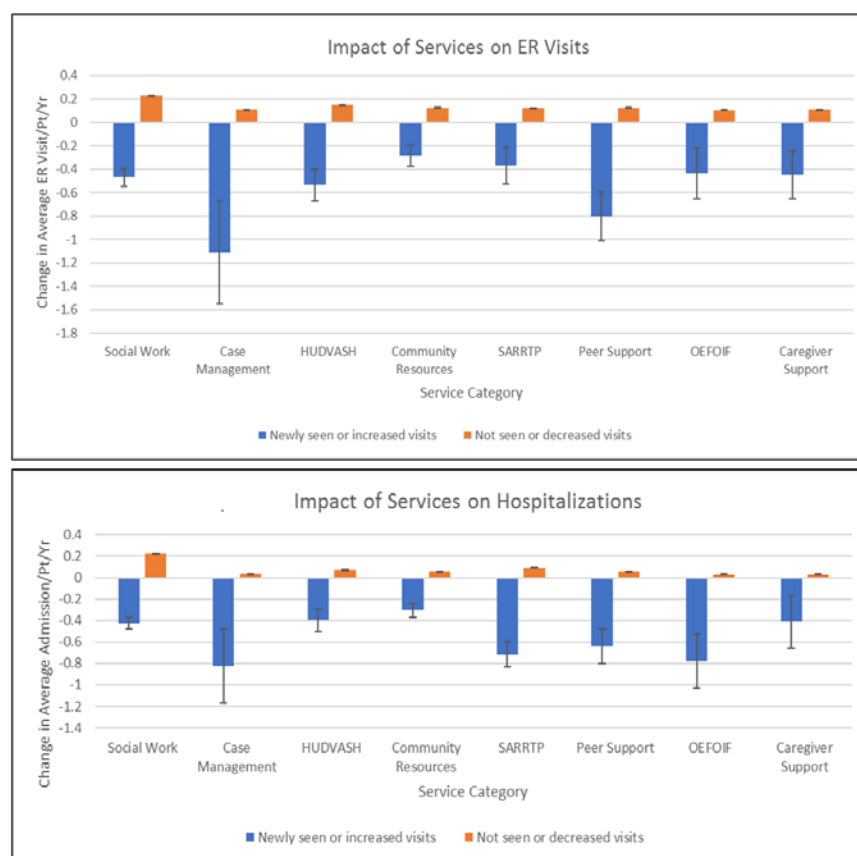
186
187
188
189

Fig 1: ER visit (a) and hospitalization (b) rates by number of SDoH risk factors for year 2017 for individuals with a Charlson score of zero.

190 For each SDoH risk factor, the odds ratios (OR) for both ER visits and hospitalization were
191 greater than one and statistically significant, with ORs for each risk factor ranging from 1.77 to
192 13.01 for ER visits and 1.86 to 18.44 for hospitalizations (Table 4). Patients who had started to
193 use a social service or increased their use of social services had decreased rates of ER visits and
194 hospitalizations, whereas those who had not been seen by social services or decreased their
195 social service utilization had an increase in their annual rate of acute care visits, regardless of
196 social service utilized (Fig 2). Those who used more categories of social services were also more
197 likely to have decreased acute care utilization rates (Fig 3).

198 **Table 4: Logistic regression analysis of the various individual SDoH risk factors, as well as the cumulative**
 199 **total risk score determining their odds ratios on the two outcomes of ER visit or hospital admission.**

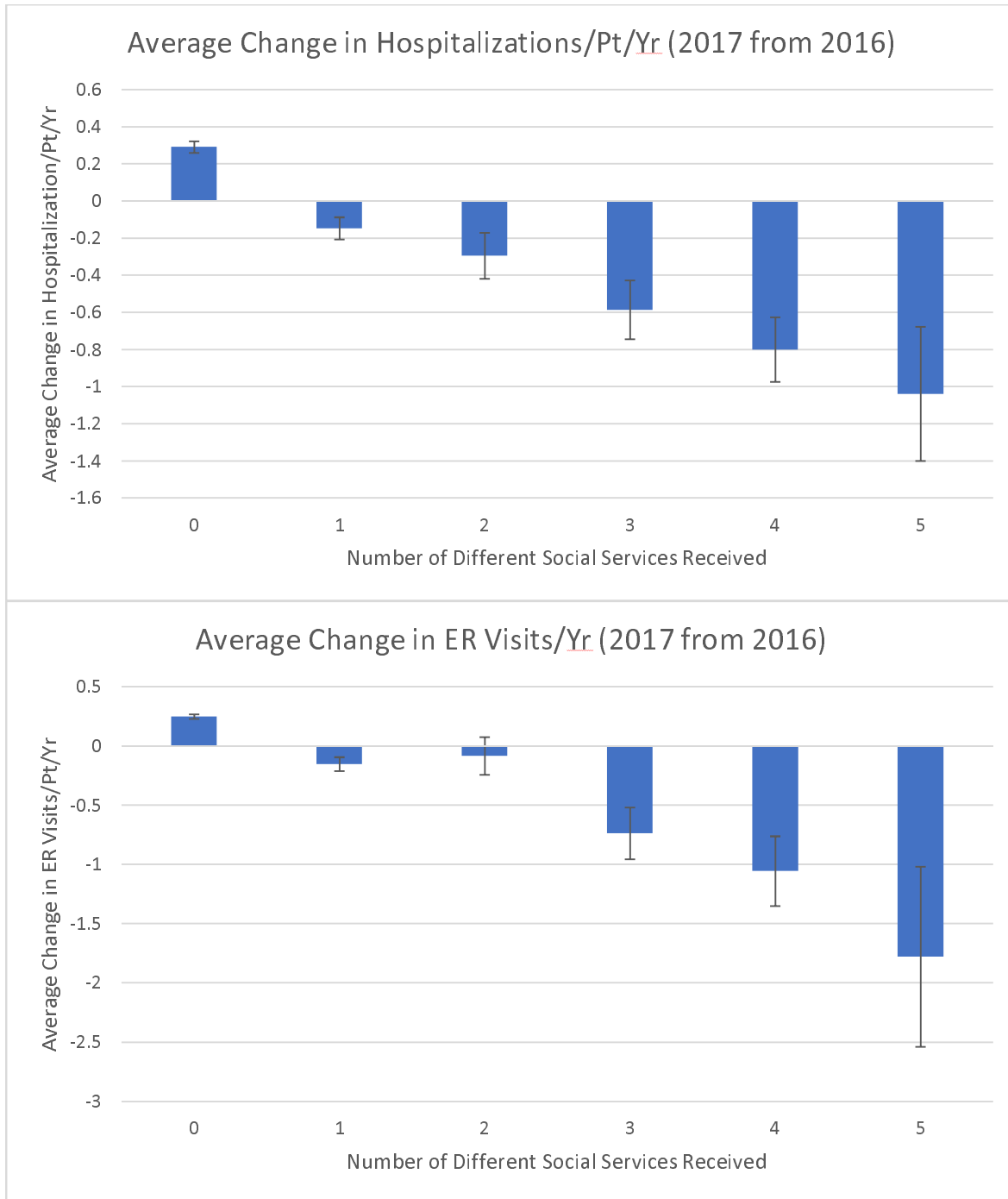
SDoH Risk Factor	Number of individuals with risk factor	Odds Ratio for ER Visits (95% CI)	Odds Ratio for Hospitalizations (95% CI)
Total	23256	1.71 (1.68, 1.75)	1.71 (1.65, 1.77)
Diet and Exercise	2892	3.19 (2.93, 3.48)	3.12 (2.62, 3.73)
Alcohol Use	1541	3.74 (3.35, 4.18)	6.15 (5.12, 7.39)
Tobacco Use	2016	2.83 (2.56, 3.14)	3.79 (3.13, 4.59)
Drug Use	437	5.74 (4.74, 6.95)	9.16 (6.98, 12.03)
Education	11	13.01 (3.82, 44.6)	18.44 (4.88, 69.61)
Employment	16620	1.77 (1.67, 1.87)	1.86 (1.63, 2.13)
Income	4786	2.27 (2.11, 2.45)	2.62 (2.24, 3.07)
Housing Insecurity	1476	5.41 (4.85, 6.03)	6.87 (5.73, 8.23)
Social Support	213	4.44 (3.36, 5.88)	3.22 (1.82, 5.66)
Community Safety	2635	4.53 (4.16, 4.94)	6.09 (5.21, 7.11)
Mental Health	6875	4.11 (3.86, 4.38)	4.41 (3.85, 5.05)



200

201

202 **Fig 2: Average annual change in (a) ER visits and (b) hospitalizations in year 2017 compared to 2016 based on**
 203 **whether patients were newly seen (or had increased visits) or were not seen (or had decreased visits).**



204

205
206
207
208

Fig 3: The average change in acute care utilization from year 2016 to year 2017 plotted against the number of distinct Social Services that saw the patient between ER visits (a) and hospitalizations (b) from one year to the next.

209 DISCUSSION

210 Interest in SDoH is increasing rapidly in healthcare and with good reason. As demonstrated by
211 our results and consistent with other studies, ER visits and hospitalizations were occurring at

212 higher rates with increased numbers of SDoH risk factors, which would confirm that there are
213 more factors outside of currently measured healthcare quality factors that influence outcomes
214 and other healthcare metrics (1-9). Having any of the 11 SDoH risk factor categories identified
215 via ICD-10 code in patients without known chronic illnesses was noted to increase the likelihood
216 of acute care utilization; however, certain risk factors appeared to have a more significant impact
217 than others.

218 On one end of the spectrum, drug use-based and housing insecurity-based risk factors, the
219 categories with higher impacts, had ORs of 5.74 and 5.41, respectively for ER visits and 9.16
220 and 6.87, respectively for hospitalizations. On the other end of the spectrum, employment-based
221 risk factors, the category with the lowest impact, had ORs of 1.77 and 1.86, respectively. This
222 may indicate what types of risk factors to focus on when planning future interventions and may
223 be helpful in earlier identification of individuals who would be more likely to utilize acute care.
224 Of note, education-based risk factors had ORs of 13.01 for ER visits and 18.44 for
225 hospitalizations. However, in the Veteran population, not only is education not generally coded,
226 all members will have at a minimum a high school diploma or equivalent or they would not have
227 been allowed to enter active duty. Thus, the education category is likely to be very
228 underrepresented in this study (only 11 total individuals with this risk factor) and may not be as
229 reliable in representing SDoH-associated healthcare disparities in the general population.

230 Social service utilization was found across the board to be positively impactful in reducing acute
231 care utilization, with case management consistently showing the highest level of impact in both
232 the ER visit and hospitalization rates. This makes sense as case management has one of the
233 largest reaches of all the specific social services (seven of 11 SDoH categories impacted) and

234 involves medical care coordination as well. Utilizing more types of social services also decreased
235 rates of acute care utilization likely for a similar reason.

236 Even with increasing interest in integrating SDoH, the most optimal approach to risk screening is
237 not clear. This project demonstrates that, within the specific healthcare ecosystem of a VA
238 Medical Center, ICD-10 diagnosis codes corresponding to SDoH risk factors, in addition
239 to employment and income data already collected as part of routine VA eligibility means
240 test, can potentially be used to screen for patients for high social risk since ICD-10 has already
241 been integrated into the EHR. Some efforts have been focused on detecting the presence
242 of SDoH mentioned in the unstructured portion of the EHR using natural language processing
243 (NLP) or using machine learning and NLP on a combination of structured and unstructured data
244 (12–21).

245

246 **Limitations**

247 While some SDoHs can indeed be ascertained from the EHR, it is important to note that a gap
248 (not quantified in this study) remains: some SDoHs are known, but not coded either due to a lack
249 of a correct code or providers not coding for them. For other SDoHs, there is no adequate code:
250 for example, food insecurity, overcrowded housing, low health literacy or living in an unsafe
251 neighborhood (important reason why people cannot exercise outside). For these, the only
252 recourse is extracting relevant mentions of them in the unstructured portions of the record. In
253 addition, there may be some ICD-10 codes that are missing from this analysis and certain ICD-
254 10 codes could have been allocated to other categories. Despite the limitations, the results of this
255 project remain promising in moving healthcare operations forward to integrate SDoH and
256 mitigate its negative effects.

257 The optimal method of capturing SDoH remains debatable and some factors may not necessarily
258 be captured by the method in this project. For example, legal troubles, cultural norms and
259 barriers, and suspicion about the healthcare system could be perceived as social risk factors,
260 however they would not neatly fall into the risk factor categories used in this project.
261 Furthermore, the identification of risk factors in this project is highly dependent on optimal data
262 entry by clinicians and healthcare employees. If clinicians do not document ICD-10 codes for a
263 patient with housing insecurity, level of education or issues with family support, this method will
264 only sub-optimally describe that patient's social risk profile. This limitation should not be
265 understated, particularly given the current challenge for healthcare workers to accurately
266 document encounters in the setting of increasing documentation requirements. For instance, the
267 high OR of acute care utilization for the education SDoH risk factor with a wide confidence
268 interval may be due to artifact from limited data availability. Also, specific to the VA system,
269 some data elements such as income level may be more readily available than in other healthcare
270 systems due to the nature of how VA benefits are determined. In addition, the cohort in this
271 project was predominantly male, Caucasian, and non-Hispanic and is not representative of the
272 general patient population in the United States.

273 Additionally, it should be stated that in the analysis of the utilization of social services, patients
274 merely having an encounter with a social service provider is being interpreted as a surrogate for
275 receiving some kind of social service benefit, such as resources, food, or housing. However, it
276 may be the case that having an encounter with a social service might result in no assistance being
277 available for a patient. Ultimately, it should be noted that the results of this project identify
278 correlations, not necessarily causations.

279

280 **CONCLUSION**

281 Given the increasing importance of the SDoH and their integration into care, the findings from
282 this quality improvement project are important because they represent an efficient method in
283 which SDoH can be captured and linked to health outcomes. Most EHR systems do not yet
284 incorporate SDoH risk screening as part of their data collection, nor do many clinical
285 workflows. The use of the ICD-10 codes does not require any new modification to EHRs.
286 Furthermore, the impact of utilization by the various social services on acute care utilization is
287 encouraging and suggests a means to make SDoH data actionable. Future work will revolve
288 around operationalizing these findings through personalized healthcare and potential use of new
289 modalities such mobile medical applications as well as improved methods of data capture such as
290 NLP.

291

292 **Acknowledgements**

293 We would like to thank Amit Dahiya, Michael Smith, Don Copp, Pete Fredericks, and Daniel
294 Garcia of the Clinical Informatics Analytics and Applications Department at the Phoenix VA
295 Medical Center for their support with SQL, guidance on clinical data warehouse navigation, and
296 data analysis support. We also acknowledge Dr. Umar Iqbal, Dr. Behnam Vahdati Nia, Dr. Ali
297 Al-Yaqoobi, and Dr. Vikeen Patel from the University of Arizona College of Medicine –
298 Phoenix for their input and support during the execution of this project.

299 **REFERENCES**

- 300 1. Social determinants of health [Internet]. [cited 2018 Mar 26]. Available from:
301 [https://www.who.int/teams/maternal-newborn-child-adolescent-health-and-](https://www.who.int/teams/maternal-newborn-child-adolescent-health-and-ageing/maternal-health/about/social-determinants-of-health--global)
302 [ageing/maternal-health/about/social-determinants-of-health--global](https://www.who.int/teams/maternal-newborn-child-adolescent-health-and-ageing/maternal-health/about/social-determinants-of-health--global)
- 303 2. Magnan S. Social Determinants of Health 101 for Health Care: Five Plus Five. NAM
304 Perspectives [Internet]. 2017 Oct 9; Available from: [https://nam.edu/social-determinants-](https://nam.edu/social-determinants-of-health-101-for-health-care-five-plus-five/)
305 [of-health-101-for-health-care-five-plus-five/](https://nam.edu/social-determinants-of-health-101-for-health-care-five-plus-five/)
- 306 3. Heiman HJ, Artiga S. Beyond Health Care: The Role of Social Determinants in Promoting
307 Health and Health Equity. 2015 Nov :11.
- 308 4. Schroeder SA. Shattuck Lecture. We can do better--improving the health of the American
309 people. *N Engl J Med*. 2007 Sep 20;357(12):1221–8.
- 310 5. Explore Health Rankings | Measures & Data Sources [Internet]. County Health Rankings &
311 Roadmaps. [cited 2018 Mar 28]. Available from:
312 <https://www.countyhealthrankings.org/explore-health-rankings/measures-data-sources>
- 313 6. Braveman P, Gottlieb L. The social determinants of health: it's time to consider the causes
314 of the causes. *Public Health Rep*. 2014 Feb;129 Suppl 2:19–31.
- 315 7. Yelin E, Trupin L, Bunde J, Yazdany J. Poverty, Neighborhoods, Persistent Stress, and
316 Systemic Lupus Erythematosus Outcomes: A Qualitative Study of the Patients' Perspective.
317 *Arthritis Care Res (Hoboken)*. 2019 Mar;71(3):398–405.
- 318 8. Joynt KE, Jha AK. Thirty-day readmissions--truth and consequences. *N Engl J Med*. 2012
319 Apr 12;366(15):1366–9.
- 320 9. Hu J, Kind AJH, Nerenz D. Area Deprivation Index Predicts Readmission Risk at an Urban
321 Teaching Hospital. *Am J Med Qual*. 2018 Oct;33(5):493–501.

- 322 10. Lagasse J. AMA, UnitedHealthcare team up on billing codes that address social
323 determinants of health [Internet]. Healthcare Finance News. [cited 2019 Apr 19]. Available
324 from: [https://www.healthcarefinancenews.com/news/ama-unitedhealthcare-team-billing-](https://www.healthcarefinancenews.com/news/ama-unitedhealthcare-team-billing-codes-address-social-determinants-health)
325 [codes-address-social-determinants-health](https://www.healthcarefinancenews.com/news/ama-unitedhealthcare-team-billing-codes-address-social-determinants-health)
- 326 11. Lix LM, Manitoba Centre for Health Policy. Cancer data linkage in Manitoba: expanding
327 the infrastructure for research. 2016.
- 328 12. Erickson J, Abbott K, Susienka L. Automatic address validation and health record review to
329 identify homeless Social Security disability applicants. *J Biomed Inform.* 2018;82:41–6.
- 330 13. Hatef E, Rouhizadeh M, Tia I, Lasser E, Hill-Briggs F, Marsteller J, et al. Assessing the
331 Availability of Data on Social and Behavioral Determinants in Structured and Unstructured
332 Electronic Health Records: A Retrospective Analysis of a Multilevel Health Care System.
333 *JMIR Med Inform.* 2019 Aug 2;7(3):e13802.
- 334 14. Feller DJ, Bear Don't Walk Iv OJ, Zucker J, Yin MT, Gordon P, Elhadad N. Detecting
335 Social and Behavioral Determinants of Health with Structured and Free-Text Clinical Data.
336 *Appl Clin Inform.* 2020;11(1):172–81.
- 337 15. Lindemann EA, Chen ES, Wang Y, Skube SJ, Melton GB. Representation of Social History
338 Factors Across Age Groups: A Topic Analysis of Free-Text Social Documentation. *AMIA*
339 *Annu Symp Proc.* 2017;2017:1169–78.
- 340 16. Bettencourt-Silva JH, Mulligan N, Sbodio M, Segrave-Daly J, Williams R, Lopez V, et al.
341 Discovering New Social Determinants of Health Concepts from Unstructured Data:
342 Framework and Evaluation. *Stud Health Technol Inform.* 2020 Jun 16;270:173–7.

- 343 17. Zhu VJ, Lenert LA, Bunnell BE, Obeid JS, Jefferson M, Halbert CH. Automatically
344 identifying social isolation from clinical narratives for patients with prostate Cancer. BMC
345 Med Inform Decis Mak. 2019 14;19(1):43.
- 346 18. Bejan CA, Angiolillo J, Conway D, Nash R, Shirey-Rice JK, Lipworth L, et al. Mining 100
347 million notes to find homelessness and adverse childhood experiences: 2 case studies of
348 rare and severe social determinants of health in electronic health records. J Am Med Inform
349 Assoc. 2018 01;25(1):61–71.
- 350 19. Feller DJ, Zucker J, Yin MT, Gordon P, Elhadad N. Using Clinical Notes and Natural
351 Language Processing for Automated HIV Risk Assessment. J Acquir Immune Defic Syndr.
352 2018 Feb 1;77(2):160–6.
- 353 20. Dorr D, Bejan CA, Pizzimenti C, Singh S, Storer M, Quinones A. Identifying Patients with
354 Significant Problems Related to Social Determinants of Health with Natural Language
355 Processing. Stud Health Technol Inform. 2019 Aug 21;264:1456–7.
- 356 21. Gold R, Cottrell E, Bunce A, Middendorf M, Hollombe C, Cowburn S, et al. Developing
357 Electronic Health Record (EHR) Strategies Related to Health Center Patients’ Social
358 Determinants of Health. J Am Board Fam Med. 2017 Aug;30(4):428–47.