

Title page

List of authors

Name	Email	ORCID ID	
Mahmoud A. Hassaan	mhassaan@alexu.edu.eg	0000-0003-0521-1360	Institute of Graduate Studies & Research
Ramy Mohamed Ghazy*	Ramy_ghazy@alexu.edu.eg	0000-0001-7611-706X	High institute of Public Health
Rofida G. Abdelwahab	IGSR_rofida.abdelwahab@alexu.edu.eg	0000-0003-2734-8077	Institute of Graduate Studies & Research
Toka A. Elbarky	IGSR.Tokaa_Adel@alexu.edu.eg	0000-0001-8636-5235	Institute of Graduate Studies & Research

Corresponding author

Ramy Mohamed Ghazy

MBBCh, MSc. MPH, Dipl.Data.analy, DrTH

Tropical Health Department, High Institute of Public Health, Alexandria University, Egypt

E-mail address: ramy_ghazy@alexu.edu.eg

GIS-Based Analysis Framework for identifying COVID-19 Incidence and Fatality Determinants at National Level Case study: Africa

Mahmoud A. Hassan¹, Ramy Mohamed Ghazy², Rofida G. Abdelwahab¹, Toka A. Elbarky¹

¹ Institute of Graduate Studies & Research (IGSR), Alexandria University, Egypt

² High Institute of Public Health, Alexandria University, Egypt

Abstract

Background: COVID-19 pandemic is an extraordinary threat with significant implications in all aspects of human life, therefore, it represents the most immediate challenges for all countries all over the world.

Objectives: This study is intended to develop a GIS-based analysis model to explore, quantify and model the relationships between COVID-19 morbidity and mortality and their potential predictor variables.

Method: For this purpose, a model was developed to estimate COVID-19 incidence and fatality rates in Africa up to 16th of August 2020 at the national level. The model involved Ordinary Least Squares (OLS) and Geographically Weighted Regression (GWR) analysis through ArcGIS was applied.

Result: Spatial Autocorrelation Analysis revealed that there was positive spatial autocorrelation in COVID-19 incidence (Moran index 0.16. P value <0.1), and fatality (Moran index 0.035, P value <0.01) rates within different African countries. At continental level, OLS revealed that COVID-19 incidence rate was found to be positively associated with overcrowding, health expenditure, HIV infections and air pollution and negatively associated with BCG vaccine ($\beta=2.97, 1.45, 0.01, 3.29, -47.65$ respectively, $P < 0.05$) At the same time, COVID-19 fatality was found to be positively related to asthma prevalence and tobacco use. Yet, certain level of inconsistency was noted in the case of COVID-19 fatality, which was negatively related to elder population, poverty, and cardiovascular mortality ($P < 0.05$). This model showed convenient level of validity in modeling the relationship between COVID-19 incidence as well as fatality and their key predictors using GWR. In this respect, the model explained about 58% and 55% of the variance in COVID-19 incidence and fatality rates, respectively, as a function of considered predictors.

Conclusion: Application of the suggested model can assist in guiding intervention strategies, particularly in case of local and community level whenever the data on COVID-19 cases and predictors variables are available.

Key words: COVID-19 incidence, Africa, GIS, COVID-19 case fatality, Geographically weighted regression

Introduction

COVID-19 is the key global challenge nowadays with a lockdown of more than 6 billion people (Iqbal et al., 2020). The novel coronavirus (SARS-CoV-2) was firstly discovered at the end of 2019 in Wuhan, China after causing a cluster of pneumonic cases. In February 2020, the World Health Organization (WHO) designated the disease as COVID-19, which stands for coronavirus disease 2019 (WHO, 2020c). In fact, this virus spread rapidly resulting in an epidemic throughout China, followed by a massive spread across the world. On March 11, 2020, WHO declared a COVID-19 as a pandemic disease due to the increasing number of cases in large number of countries all over the world at rapid rates and the severity of disease (García-Basteiro et al., 2020). Up till 22nd of November 2020, globally, more than 57 million individual caught infection with more than 1.3 million confirmed deaths. In Africa, more than 2 million of COVID-19 cases and about 49 thousands confirmed deaths were reported up to date (WHO, 2020b).

The transmission of COVID-19 is primarily transmitted through direct person-to-person transmission. Furthermore, it has been detected in non-respiratory specimens (stool, blood, ocular secretions, and semen), yet the role of these sites in transmission is uncertain (ATCTW, 2020). More recently, the airborne transmission was reported as a probable transport pathway to spread COVID-19 (Pani et al., 2020). It is worthy to mention that, asymptomatic individual can transmit infection (Rothe et al., 2020). Symptomatic patient infectiousness started 2.3 days before symptoms onset (peak 0.7 days before symptom onset) and declined within seven days. After a week to 10 days, the risk of diseases transmission is unlikely, chiefly for immunocompetent patients with non-severe infection. Broadly speaking, degree of closeness and duration of contact increases the risk of infection (He et al., 2020).

For combating and proper management of COVID-19 spread, there is a need to understand the key determinants of its incidence. Therefore, a considerable number of research work was undertaken to examine various determinants of COVID-19 incidence and fatality. Generally, weather conditions were suggested to have impacts on COVID-19 incidence, where wet and cold conditions assumed to contribute to the rapid spread of COVID-19. In this respect, it was found that COVID-

19 cases and deaths are negatively correlated with temperature (Iqbal et al., 2020) and positively correlated with absolute humidity (Pani et al., 2020). Also, it was argued that that air pollution can promote to sustained transmission of COVID-19, where COVID-19 incidence was found to be positively correlated with PM_{2.5} and NO₂ (Li et al., 2020). This may highlight the role of quality of life (QOL) as one of the main determinants of COVID-19 incidence. In addition to air pollution, QOL can be manifested in access to drinking water and sanitation services.

Also, the association between Particulate Matter (PM) pollution and COVID-19 case fatality rate was emphasized (Yao et al., 2020). Moreover, it was argued that existing health security capacities are essential for tackling public health risks including infectious disease outbreaks such as COVID-19. In this respect, it was found that half of world countries have not sufficient operational readiness capacities for dealing with potential health emergencies associated with COVID-19 (Pung et al., 2020).

Furthermore, vulnerability of individuals to COVID-19 morbidity and mortality can be increased by comorbidity of some chronic diseases. For example, it was found that elderly individuals (65 years old and above), who have comorbidities, such as hypertension or diabetes mellitus (DM), are expected to develop a more severe course and progression of the COVID-19 (Sanyaolu et al., 2020). Such an argument may imply also the role of age structure in COVID-19 incidence, where elder population are likely to catch COVID-19. As for socioeconomic and demographic conditions, a wide range of determinants were examined such as age structure (Baron, 2020; Goldstein and Lee, 2020; Omori et al., 2020), which was found to have a significant impact of COVID-19 fatality. Accordingly, the proportion of elder population (65 years or above) was suggested to be a predictive for COVID-19 fatalities (Hawkins et al., 2020). Meanwhile, the case-fatality ratio (CFR) was found to be correlated significantly with population density (Baron, 2020). Also, it was argued that the COVID-19 fatality rates were found to be associated with poverty and urban population proportions (Finch and Hernández Finch, 2020). Both COVID-19 cases and fatalities were found to strongly associated with lower education levels (Hawkins et al., 2020) and tobacco smoking (Baron, 2020).

Many countries have adopted the national lockdown, limiting travel, and spatial rather than “social” distancing to control the local transmission of COVID-19 (Bi et al., 2020; Tian et al., 2020). Such strategies were found to be effective to mitigate COVID-19 transmission (Kraemer et al., 2020; Zhao et al., 2020). Among these strategies for mitigating transmission, limiting travel was found to have modest effect while transmission reduction measures like lockdown showed higher levels of effectiveness in the disease transmission control (Chinazzi et al., 2020). This generally implies that population mobility is one of the main determinants of COVID-19 incidence.

Mapping disease outbreaks can assist in understanding their key determinants. In this respect, thematic maps may be misleading in predicting the spatial pattern of the diseases. Alternatively, analyzing spatial pattern is more effective as it implies assessing statistical significance of spatial clustering or dispersion, mapping clusters, if any, and modeling spatial relationships (Fischer and Getis, 2010). Accordingly, the key factors contributing to the diseases incidence and fatality can be determined.

Such an overall objective can be attained through the following three specific objectives including: analyzing spatial variations of COVID19 cases and delineating the main hotspots, exploring various determinants of COVID-19 spatial pattern. and identifying the most significant determinants of COVID-19. Such a GIS-based model can provide better understanding of the key factors underlying COVID-19 incidence and fatality, which, in turn, may guide intervention measures in the future.

Methodology

To identify the key determinants of COVID-19 incidence and fatality, a methodology of four main steps was developed (Figure 1) as follows:

- Identifying potential predictors of COVID-19 incidence: Firstly, a preliminary list of COVID-19 incidence predictors was developed. The list of identified predictors reflected 33 of COVID-19 incidence predictors. Thereafter, these preliminary predictors were screened in accordance to some criteria such as relevance and data availability, therefore, a short list of 14 predictor variables of COVID-19

incidence was developed that reflect different categories of predictors including: demographic and socioeconomic conditions in addition to comorbidity, health security capacities, quality of life and population mobility (Table 1).

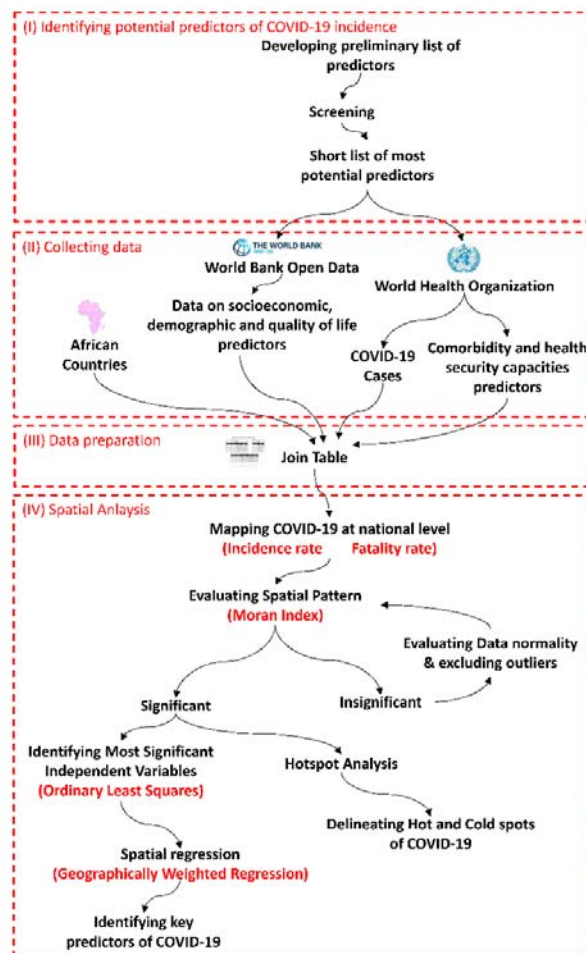


Figure 1: Analysis framework for identifying COVID-19 incidence and fatality determinants through GIS

Meanwhile, a short list of 16 predictor variables of COVID-19 fatality was developed that reflect different categories of predictors including: demographic and socioeconomic conditions in addition to comorbidity and health security capacities (Table 2Table 1).

- Collecting data on COVID-19 and potential predictors: Data on total confirmed cases and deaths at national level in Africa was up to 16th of August 2020 were acquired from World Health Organization (WHO) portal, which provides data on the global, regional and country-level COVID-19 cases and deaths in regular basis (WHO, 2020b). Meanwhile, data on most potential predictor variables were

acquired from The World Bank Group (The World Bank Group, 2020) and The Global Health Observatory (WHO, 2020a).

Table 1: List of potential predictors of COVID-19 incidence

Categories	Predictors	Indicators
Socioeconomic and demographic predictors	Overcrowding	Population Density (person/Km ²)
	Educational level	Illiteracy rate (%)
	Income	GDP per capita
	Poverty incidence	Proportion of the population living in extreme poverty (%)
Comorbidity predictors	Vaccine protects against tuberculosis	Proportion of one-year old population immunized (%)
	HIV infections	Rate of HIV infections (per 1000 uninfected population)
	Tuberculosis incidence	Rate of Tuberculosis incidence (per 100 000 population)
	Tobacco use	Prevalence of tobacco use among persons 15 years and older (%)
Health security capacities predictors	Health expenditure	Domestic general government health expenditure (GGHE-D) as percentage of general government expenditure (GGE) (%)
	Stringency index	Government Response Stringency Index
Quality of life	Using a hand-washing facility	Proportion of population using a hand-washing facility with soap and water (%)
	Access to drinking water services	Proportion of population using at least basic drinking water services (%)
	Access to sanitation services	Proportion of population using at least basic sanitation services (%)
	Air pollution	Annual mean concentrations of fine particulate matter (PM2.5) in urban areas (µg/m ³)

- Data preparation: This involved developing a geodatabase for African countries including a key polygon feature class representing the territories of African countries with their main attributes. Moreover, collected data on various predictors were tabulated and COVID-19 incidence and fatality rates were calculated. Thereafter, data on COVID-19 incidence as well as potential predictors were integrated into the developed geodatabase through join table.

Table 2: List of potential predictors of COVID-19 fatality

Categories	Predictors	Indicators
Socioeconomic and demographic predictors	Age Structure	Median age (year)
	Elder population	Proportion of elderly Population (Above 65 years old) (%)
	Human Development	Human development index
	Poverty	Proportion of the population living in extreme poverty (%)
Comorbidity predictors	Diabetes mellitus prevalence	Proportion of diabetic population (ages 20 to 79) (%)
	Cardiovascular fatality	Death rate from cardiovascular disease (per 100,000 people)
	Asthma prevalence	Proportion of asthmatic population (%)
	Cancer prevalence	Proportion of population Cancer (%)
	Human immune deficient virus (HIV) infections	New HIV infections (per 1000 uninfected population)
	Tuberculosis incidence	Tuberculosis incidence (per 100 000 population)
Health security capacities predictors	Tobacco use	Prevalence of tobacco use among persons 15 years and older (%)
	Density of physicians	Density of medical doctors (per 10 000 population)
	Density of nursery	Density of nursing and midwifery personnel (per 10 000 population)
	Density of pharmacist	Density of pharmacists (per 10 000 population)
	Health expenditure	Domestic general government health expenditure (GGHE-D) as percentage of general government expenditure (GGE) (%)
	Hospital beds ratio	Hospital beds per 1,000 people

- **Spatial analysis:** This involves mapping COVID-19 incidence and evaluating the spatial pattern of COVID-19 incidence through Spatial Autocorrelation Tool (Moran's I index). Based upon the results of Moran index, the spatial pattern of COVID-19 incidence was evaluated and outlier records, whether statistically or spatially, are excluded. Thereafter, the main hot spots were delineated through Hot Spot Analysis. Meanwhile, the relationships between potential predictors as independent variables and COVID-19 incidence or fatality as dependent variable were calibrated and most significant independent variables are identified through Ordinary Least Squares Tool. Finally, Geographically Weighted Regression (GWR) is applied to explore the predictive power of such variables locally for each county, as it is not expected that Covid-19 driving factors would be uniform across different countries with varied conditions. GWR was initially introduced by (Brunsdon et al., 1996) to extend the traditional regression analysis for modeling local relationships between a certain phenomenon that is

varied over space and a number of predictors so that the coefficients in the model rather than being constant are location-specified. Due to its analytical power, GWR was recently applied for modeling and explaining the spatial relationships in a variety of fields (Cahill and Mulligan, 2007; Huang and Leung, 2002; Mennis, 2013)

Results and Discussion

Up till 16th of August 2020, African countries recorded 1.1 million confirmed cases of COVID-19 and more than 25,000 deaths. COVID-19 cases varied widely among different countries ranging between 583653 in the cases of South Africa and 285 in Eretria. Similarly, COVID-19 deaths ranged between 0 in Eretria and 11,677 in south Africa. As for COVID-19 incidence rate, it was found to be about 0.97 (per 100,000 population) on average ranging between 0.009 and 9.97 (Table 3). Such noticeable high variations, which indicates to uneven distribution of COVID-19 cases among different countries, can be actually attributed to the accuracy of registration procedures in these countries.

Table 3: Descriptive statistics of COVID-19 incidence and fatality rate in African countries

Variables	Minimum	Maximum	Mean± Standard Deviation
COVID-19 Incidence rate (per 100,000 of population)	0.01	9.97	0.96±1.69
COVID-19 fatality rate (per 100,000 of population)	0.00	0.20	0.02±0.03

To evaluate the distribution pattern of COVID-19 incidence and deaths rates, Spatial Autocorrelation analysis (Moran's I index) was applied. Preliminary trials of Spatial Autocorrelation Analysis revealed that insignificant spatial autocorrelation in COVID-19 incidence and deaths rates due to existence of outlier records, whether spatially such as Madagascar, or statistically such as South Africa, Gabon and Djibouti. Therefore, these outliers were excluded. The results of Moran's I index revealed that there was positive spatial autocorrelation in COVID-19 incidence and deaths rates within different African countries. It was found that the Moran's I index for COVID-19 incidence rate recorded a small value (0.16), a relatively high z-score (1.67) and P value (<0.10) (Figure 2-a). Meanwhile, the Moran's I index for COVID-19 deaths rate recorded a relatively higher value (0.35), z-score (3.16) and smaller P

value (<0.01) (Figure 2-b), which indicate that the relationship is more significant in the case of deaths compared to confirmed cases.

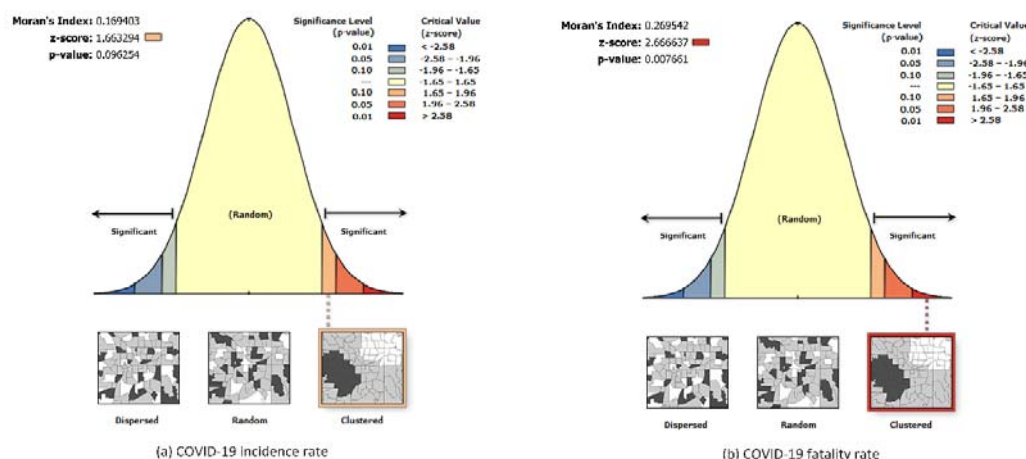


Figure 2: Spatial auto correlation analysis

Generally, it can be argued that, based on statistically significant P -value and high positive z -score, the spatial distribution of COVID-19 incidence and deaths rates tend to be clustered and the null hypothesis of Complete Spatial Randomness can be rejected. Hot Spot analysis revealed that a cold spot of COVID-19 incidence and fatality rates was noticeably identified in East of Africa (Figure 3-a & b). Meanwhile, three hot spots of COVID-19 incidence rate were identified. These hot spots included Egypt and Libya in the north east, Morocco, Mauritania, Senegal and Gambia in the north west in addition to Namibia in the south (Figure 3-a). Also, two hot spots of COVID-19 fatality rates were identified in the north-eastern and north-western parts of the continent (Figure 3-b) corresponding to but more significant compared to hot spots of incidence rate.

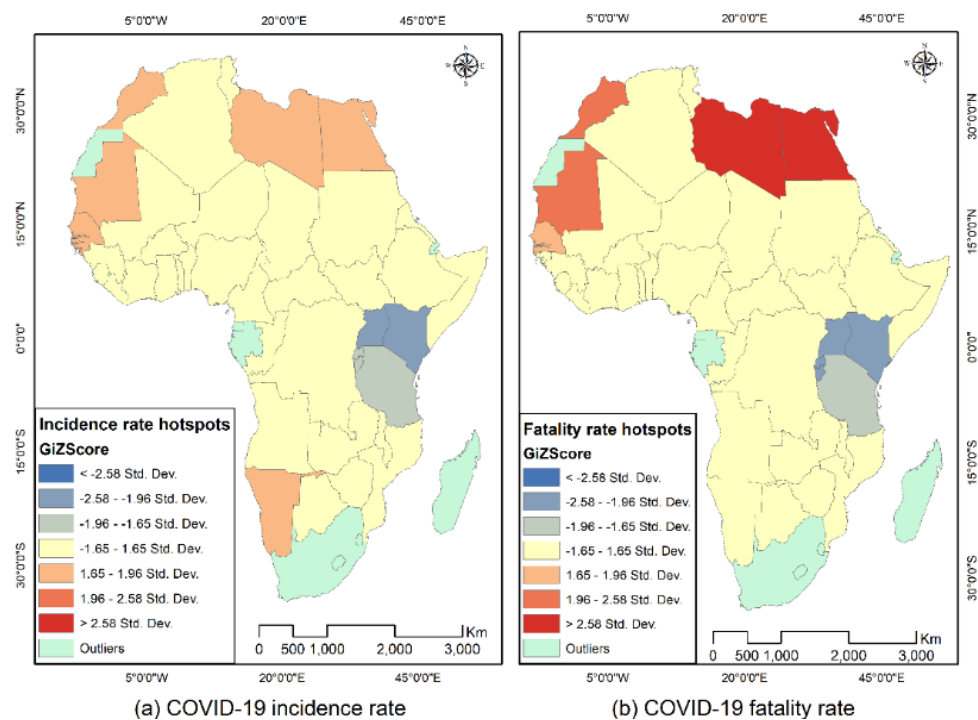


Figure 3: Hot spot analysis of COVID-19 incidence and fatality rates

To identify the key predictors of COVID-19 incidence and fatality rates, Geographically Weighted Regression (GWR) analysis through ArcGIS was applied. As a prerequisite for GWR, there would a need to evaluate multicollinearity among considered predictors (explanatory variables). For this purpose, a model was developed to estimate COVID-19 incidence and fatality rates in Africa up to 16th of August 2020, at the national level, using v analysis. The relationships between the explanatory variables and COVID-19 incidence and fatality rates are assumed to be the same at various countries. As a result of OLS model, the relationships between COVID-19 incidence and fatality rates on one hand and various considered explanatory variables, on the other hand, were found statistically insignificant. Also, it was found that some variables have large value of Variance Inflation Factor (VIF), which indicate redundancy among these variables. Accordingly, through an iterative process, variables with large VIF value have been excluded step-wise and, the remaining explanatory predictor variables in terms of COVID-19 incidence included: overcrowding, vaccine against tuberculosis, HIV infection, health expenditure and air

pollution. Meanwhile, the remaining explanatory predictor variables in terms of COVID-19 fatality included: elder population, poverty, cardiovascular fatality, asthma prevalence and tobacco use (Table 4).

The results of OLS model showed that all explanatory variables of both COVID-19 incidence and fatality are statistically significant ($P < 0.05$). COVID-19 incidence rate was found to be positively associated with overcrowding ($\beta=2.97$), health expenditure $\beta=1.45$), HIV infection ($\beta=0.01$) and air pollution ($\beta=3.29$) and negatively associated with BCG vaccine ($\beta=-47.65$). These findings are consistent with expectations. The only exception was in the case of health expenditure that is supposed to be negatively related to COVID-19 incidence rate. This can be explained by the fact that high health expenditures usually implies improved health care capacities with better monitoring and registrations systems as well as COVID-19 tests. This, consequently, means more recorded cases compared to countries with lower health expenditure.

At the same time, COVID fatality was found to be positively related to asthma prevalence ($\beta=0.00420$) and tobacco use ($\beta=0.00005$). Yet, certain level of inconsistency was noted in the case of COVID-19 fatality, which was negatively related to elder population ($\beta=-0.00258$), poverty ($\beta=-0.00028$) and cardiovascular fatality ($\beta=-0.00031$). The negative relationship between cardiovascular and COVID-19 fatality can be explained by inaccurate data on cardiovascular fatality due to inefficient national mortality registration systems in most African countries (Rao et al., 2004). Meanwhile, the positive relationship between poverty and COVID-19 fatality can be justified by the fact that poverty usually implies lack of health insurance and less chance of getting hospitalized in case of infection, and less likely to be registered as a Covid-19 death incident.

Table 4: Ordinary Least Squares Regression Model

Variable	Coefficient (β)	t-Statistic	Probability	VIF
COVID-19 incidence				
Intercept	0.44514	1.97964	0.05543	-----
Overcrowding	2.97288	4.31716	0.00012	1.08596
Health expenditure	1.45380	2.28912	0.02805	1.30737
BCG vaccine	-47.65202	-2.62772	0.01256	1.15719
HIV infections	0.01144	2.54531	0.01535	1.15583
Air pollution	3.28993	2.89638	0.00638	1.02464
R^2	0.45351			
COVID-19 fatality				
Intercept	0.01512	2.07490	0.04520	-----
Elder population	-0.00258	-2.23400	0.03178	2.07770
Poverty	-0.00028	-3.77480	0.00058	1.97820
Cardiovascular fatality	-0.00031	-2.66490	0.01146	1.90340
Asthma prevalence	0.00420	3.10450	0.00370	2.72620
Tobacco use	0.00005	2.94160	0.00568	1.16880
R^2	0.53377			

Moreover, all explanatory variables have noticeably small Variance Inflation Factor (VIF) values, which indicated that no redundancy among the considered explanatory variables. Generally, the results of OLS model are promising as the model recorded R^2 of 0.4535 in case of COVID-19 incidence and 0.5338 in case of fatality. This means that the model explained about 45% and 53% of the variance in COVID-19 incidence and fatality rates, respectively. However, such a relatively low level of explanatory power of the model can be justified by data accuracy and the nature of OLS itself that doesn't consider the local variations in COVID-19 incidence and fatality and predictor variables. Accordingly, to increase the explanatory power of the model, Geographically Weighted Regression (GWR) was applied considering spatial relationships between COVID-19 incidence as well as fatality rates and various predictors variables.

The results of GWR were statistically more significant compared to OLS model, where the local produced R^2 in case of COVID-19 incidence ranged between

0.45 and 0.66 with an overall adjusted R^2 of 0.58. Meanwhile, local produced R^2 in case of COVID-19 fatality, was found to be more varied ranging between 0.34 and 0.85 with an overall adjusted R^2 of 0.55. This is highlighted by the standard variation, which is twofold that of incidence rate (Table 5). Generally, it should be noted that except for BCG vaccine, mostly the GWR model parameters were found to be less varied recording low standard deviation.

Table 5: Coefficients, residual and R^2 produced by (GWR) model

Parameters	Minimum	Maximum	Mean	Standard Deviation
COVID-19 incidence				
Intercept	0.28453	1.03252	0.58772	0.29922
Overcrowding (β)	1.98344	4.08228	3.10461	0.49437
Health expenditure (β)	0.19844	3.33230	1.66191	1.16584
BCG vaccine (β)	-128.33056	-20.09850	-66.60410	42.39930
HIV infections (β)	0.00539	0.01291	0.00986	0.00224
Air pollution (β)	3.06844	4.50561	3.78995	0.35991
Residual	-0.46329	0.47701	-0.00360	0.24063
Local R^2	0.44866	0.66377	0.56400	0.06736
Squared residuals	2.432547			
Overall Adjusted R^2	0.575972			
COVID-19 fatality				
Intercept	-0.00027	0.02214	0.01078	0.00644
Elder population (β)	-0.00354	0.00137	-0.00144	0.00117
Poverty (β)	-0.00038	-0.00016	-0.00025	0.00008
Cardiovascular fatality (β)	-0.00043	-0.00017	-0.00027	0.00007
Asthma prevalence (β)	0.00162	0.00625	0.15386	0.00366
Tobacco use (β)	0.00004	0.00006	0.00005	0.00001
Residual	-0.01115	0.01649	0.00010	0.00589
Local R^2	0.33673	0.85291	0.56072	0.14392
Squared residuals	0.00146			
Overall Adjusted R^2	0.54622			

Also, it was noted that GWR model in case of COVID-19 incidence revealed higher explanatory power in western and southern parts of Africa compared to other parts of the continent (Figure 4-a). In contrast, higher explanatory power of GWR

model in case of COVID-19 fatality was noted in the north-eastern part of Africa and decreases noticeably westward and southward (Figure 4-b).

This means that the relationships between COVID-19 incidence and overcrowding, BCG vaccine, HIV infection, health expenditure and air pollution can be more accurately captured in West Africa and sub-Saharan countries. Meanwhile, the relationships between COVID-19 fatality and elder population, poverty, cardiovascular fatality, asthma prevalence and tobacco use can be more accurately captured in north-eastern African countries.

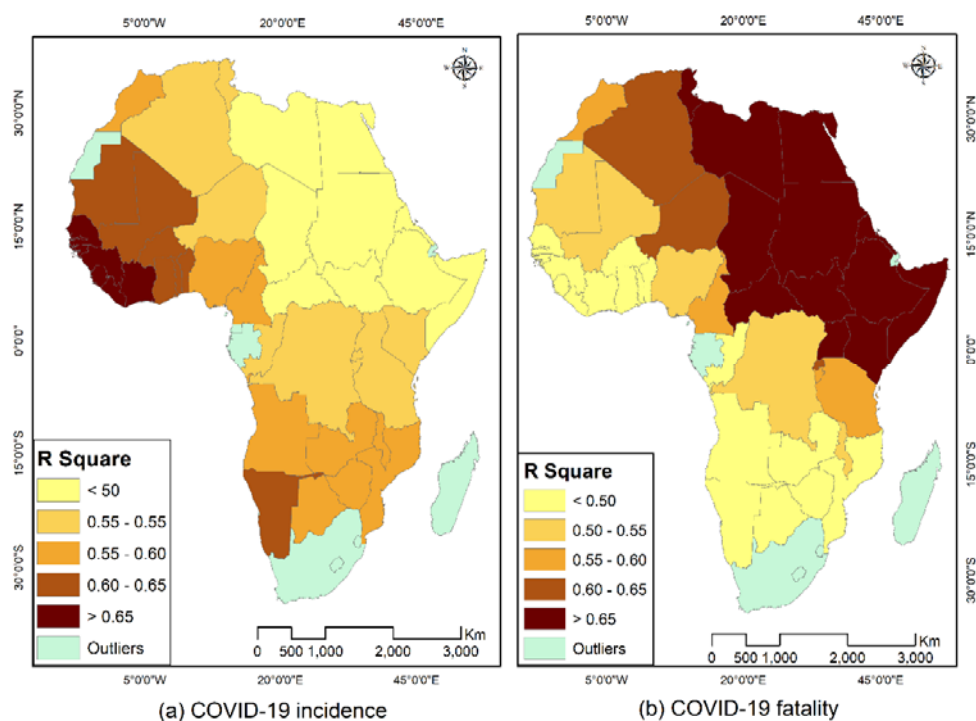


Figure 4: Spatial distribution of local R^2 of COVID-19 incidence and fatality rates

The validity of GWR model, results was emphasized by the low value of the squared residuals, which was found to be 2.432547 and 0.00146 in the case of COVID-19 incidence and fatality in Africa, respectively. Such a noticeably small value of squared residuals indicates slight difference between observed variable and its estimated value by GWR model and thus model validity. Generally, GWR model

revealed varied levels of accuracy in different African countries. This was highlighted by mapping residual values (Figure 5).

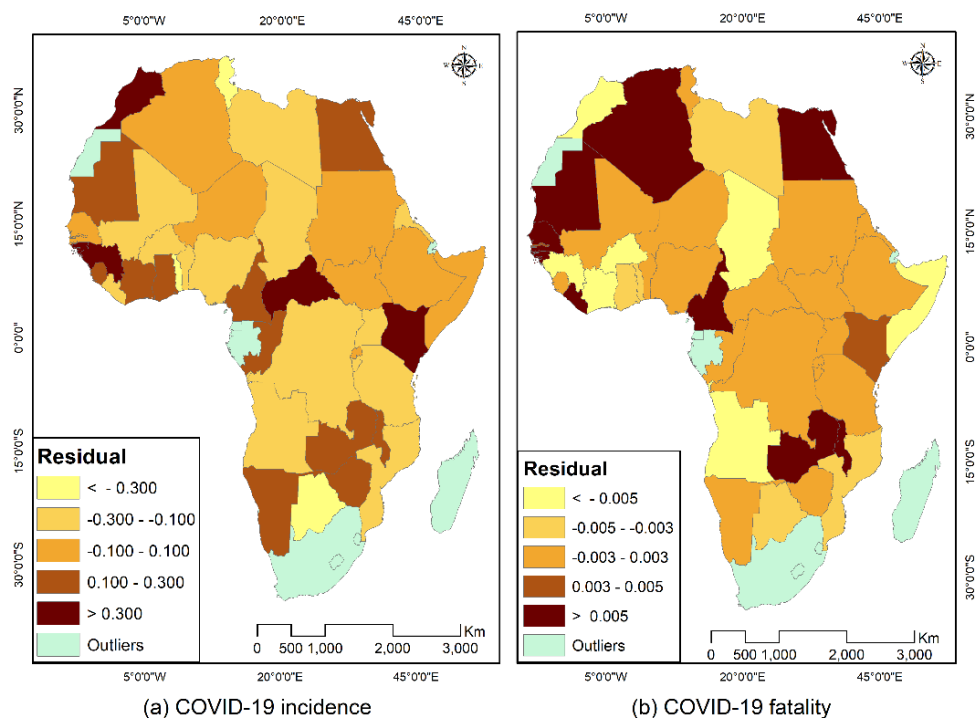


Figure 5: Spatial distribution of residual

Moreover, GWR model predictions were evaluated through plotting COVID-19 incidence and fatality rate in different African countries predicted by the suggested GWR model versus observed rates (Figure 6). In this respect, the suggested GWR model revealed reasonable level of accuracy.

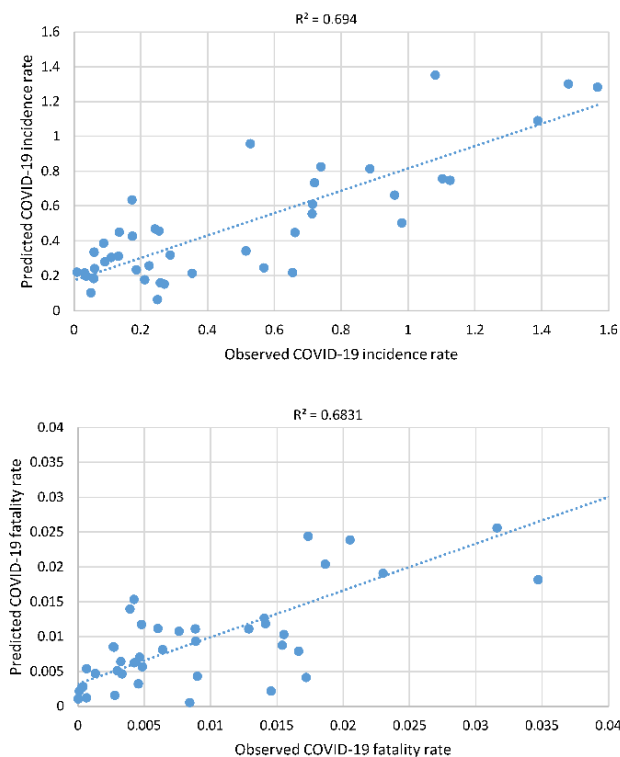


Figure 6: Observed versus predicted COVID-19 incidence and fatality rates in Africa

Conclusion

The proposed GIS-based model showed high level effectiveness in exploring and modeling the relationships between COVID-19 incidence and fatality rates, on one hand, as dependent variables and a number of relevant predictors as independent variables rate, on the other hand. Modeling such relationships requires using (OLS) and (GWR) in an integrated manner. The relationships between the COVID-19 incidence as well as fatality rates in Africa and various predictor variables have been quantitatively demonstrated through the proposed model.

The proposed model in this study suggested that overcrowding, vaccine against tuberculosis, HIV infection, health expenditure and air pollution are the key determinants of COVID-19 incidence in Africa. Similarly, elder population, poverty, cardiovascular fatality, asthma prevalence and tobacco use were identified through the proposed model to be the key determinants of COVID-19 fatality rate in Africa. Finally, the proposed model can be downscaled to be applied to local and/or

community levels. In such a case, the successful application of the GIS-based model suggested in this study depends largely on availability of updated, accurate and detailed data on COVID-19 incidence and fatality as well as various considered predictors.

References

ATCTW, Advancing Transfusion and Cellular Therapies Worldwide (2020) AABB's

Coronavirus Resources. AABB.

[http://www.aabb.org/advocacy/regulatorygovernment/Pages/AABB-](http://www.aabb.org/advocacy/regulatorygovernment/Pages/AABB-Coronavirus-Resources.aspx)

[Coronavirus-Resources.aspx](http://www.aabb.org/advocacy/regulatorygovernment/Pages/AABB-Coronavirus-Resources.aspx) [Accessed 18 December 2020].

Baron, Yves Muscat (2020) Incidence and Case-Fatality Ratio of COVID-19 infection in relation to Tobacco Smoking, Population Density and Age Demographics in the USA: could Particulate Matter derived from Tobacco Smoking act as a Vector for COVID-19 transmission? *medRxiv*. 10.1101/2020.10.04.20206383.

Bi, Qifang, Yongsheng Wu, Shujiang Mei, Chenfei Ye, Xuan Zou, Zhen Zhang, Xiaojian Liu, Lan Wei, Shaun A. Truelove, Tong Zhang, Wei Gao, Cong Cheng, Xiujuan Tang, Xiaoliang Wu, Yu Wu, Binbin Sun, Suli Huang, Yu Sun, Juncen Zhang, Ting Ma, Justin Lessler & Tiejian Feng (2020) Epidemiology and transmission of COVID-19 in 391 cases and 1286 of their close contacts in Shenzhen, China: a retrospective cohort study. *The Lancet Infectious Diseases* 20: 911-919. 10.1016/s1473-3099(20)30287-5.

Brunsdon, Chris, A. Stewart Fotheringham & Martin E. Charlton (1996) Geographically Weighted Regression: A Method for Exploring Spatial Nonstationarity. *Geographical Analysis* 28: 281-298.

- Cahill, Meagan & Gordon Mulligan (2007) Using Geographically Weighted Regression to Explore Local Crime Patterns. *Social Science Computer Review* 25: 174–193.
- Chinazzi, Matteo, Jessica T. Davis, Marco Ajelli, Corrado Gioannini, Maria Litvinova, Stefano Merler, Ana Pastore y Piontti, Kunpeng Mu, Luca Rossi, Kaiyuan Sun, Cécile Viboud, Xinyue Xiong, Hongjie Yu, M. Elizabeth Halloran, Ira M. Longini & Alessandro Vespignani (2020) The effect of travel restrictions on the spread of the 2019 novel coronavirus (COVID-19) outbreak. *Science* 368: 395. [10.1126/science.aba9757](https://doi.org/10.1126/science.aba9757).
- Finch, W. Holmes & Maria E. Hernández Finch (2020) Poverty and Covid-19: Rates of Incidence and Deaths in the United States During the First 10 Weeks of the Pandemic. *Frontiers in Sociology* 5. [10.3389/fsoc.2020.00047](https://doi.org/10.3389/fsoc.2020.00047).
- Fischer, Manfred M. & Arthur Getis (2010). *Handbook of Applied Spatial Analysis: Software Tools, Methods and Applications*, Springer, Heidelberg.
- García-Basteiro, Alberto L., Carlos Chaccour, Caterina Guinovart, Anna Llupià, Joe Brew, Antoni Trilla & Antoni Plasencia (2020) Monitoring the COVID-19 epidemic in the context of widespread local transmission. *The Lancet Respiratory Medicine* 8: 440-442. [10.1016/s2213-2600\(20\)30162-4](https://doi.org/10.1016/s2213-2600(20)30162-4).
- Goldstein, J. R. & R. D. Lee (2020) Demographic perspectives on the mortality of COVID-19 and other epidemics. *Proc Natl Acad Sci U S A* 117: 22035-22041. [10.1073/pnas.2006392117](https://doi.org/10.1073/pnas.2006392117).
- Hawkins, R. B., E. J. Charles & J. H. Mehaffey (2020) Socio-economic status and COVID-19-related cases and fatalities. *Public Health* 189: 129-134. [10.1016/j.puhe.2020.09.016](https://doi.org/10.1016/j.puhe.2020.09.016).

- He, X., E. H. Y. Lau, P. Wu, X. Deng, J. Wang, X. Hao, Y. C. Lau, J. Y. Wong, Y. Guan, X. Tan, X. Mo, Y. Chen, B. Liao, W. Chen, F. Hu, Q. Zhang, M. Zhong, Y. Wu, L. Zhao, F. Zhang, B. J. Cowling, F. Li & G. M. Leung (2020) Temporal dynamics in viral shedding and transmissibility of COVID-19. *Nat Med* 26: 672-675. 10.1038/s41591-020-0869-5.
- Huang, Yefang & Yee Leung (2002) Analysing regional industrialisation in Jiangsu province using geographically weighted regression. *Journal of Geographical Systems* 4: 233-249.
- Iqbal, M. M., I. Abid, S. Hussain, N. Shahzad, M. S. Waqas & M. J. Iqbal (2020) The effects of regional climatic condition on the spread of COVID-19 at global scale. *Sci Total Environ* 739: 140101. 10.1016/j.scitotenv.2020.140101.
- Kraemer, MUG, CH Yang, B Gutierrez, CH Wu, B Klein, DM Pigott, Open COVID-19 Data Working Group, L du Plessis, NR Faria, R Li, WP Hanage, JS Brownstein, M Layan, A Vespignani, H Tian, C Dye, OG Pybus & SV Scarpino (2020) The effect of human mobility and control measures on the COVID-19 epidemic in China. *Science* 368: 493-497. doi: 10.1126/science.abb4218.
- Li, H., X. L. Xu, D. W. Dai, Z. Y. Huang, Z. Ma & Y. J. Guan (2020) Air pollution and temperature are associated with increased COVID-19 incidence: A time series study. *Int J Infect Dis* 97: 278-282. 10.1016/j.ijid.2020.05.076.
- Mennis, Jeremy (2013) Mapping the Results of Geographically Weighted Regression. *The Cartographic Journal* 43: 171-179. 10.1179/000870406x114658.
- Omori, R., R. Matsuyama & Y. Nakata (2020) The age distribution of mortality from novel coronavirus disease (COVID-19) suggests no large difference of susceptibility by age. *Sci Rep* 10: 16642. 10.1038/s41598-020-73777-8.

- Pani, S. K., N. H. Lin & S. RavindraBabu (2020) Association of COVID-19 pandemic with meteorological parameters over Singapore. *Sci Total Environ* 740: 140112. 10.1016/j.scitotenv.2020.140112.
- Pung, Rachael, Calvin J. Chiew, Barnaby E. Young, Sarah Chin, Mark I. C. Chen, Hannah E. Clapham, Alex R. Cook, Sebastian Maurer-Stroh, Matthias P. H. S. Toh, Cuiqin Poh, Mabel Low, Joshua Lum, Valerie T. J. Koh, Tze M. Mak, Lin Cui, Raymond V. T. P. Lin, Derrick Heng, Yee-Sin Leo, David C. Lye, Vernon J. M. Lee, Kai-qian Kam, Shirin Kalimuddin, Seow Yen Tan, Jiashen Loh, Koh Cheng Thoon, Shawn Vasoo, Wei Xin Khong, Nur-Afidah Suhaimi, Sherlynn J. H. Chan, Emma Zhang, Olivia Oh, Albert Ty, Charlene Tow, Yi Xian Chua, Wei Liang Chaw, Yixiang Ng, Farid Abdul-Rahman, Shafiq Sahib, Zheng Zhao, Cheryl Tang, Constance Low, Ee Hui Goh, Georgina Lim, Yan'an Hou, Imran Roshan, James Tan, Kelly Foo, Khine Nandar, Lalitha Kurupatham, Pei Pei Chan, Pream Raj, Yijun Lin, Zubaidah Said, Anne Lee, Cherie See, Jessey Markose, Joanna Tan, Guan hao Chan, Wanhan See, Xinyi Peh, Vincent Cai, Wen Kai Chen, Zongbin Li, Roy Soo, Angela L. P. Chow, Wycliffe Wei, Aysha Farwin & Li Wei Ang (2020) Investigation of three clusters of COVID-19 in Singapore: implications for surveillance and response measures. *The Lancet* 395: 1039-1046. 10.1016/s0140-6736(20)30528-6.
- Rao, Chalapati , Debbie Bradshaw & Colin D. Mathers (2004) Improving death registration and statistics in developing countries: Lessons from sub-Saharan Africa. *Southern African Journal of Demography* 5: 81-99.
- Rothe, C., M. Schunk, P. Sothmann, G. Bretzel, G. Froeschl, C. Wallrauch, T. Zimmer, V. Thiel, C. Janke, W. Guggemos, M. Seilmaier, C. Drosten, P.

Vollmar, K. Zwirgmaier, S. Zange, R. Wolfel & M. Hoelscher (2020)

Transmission of 2019-nCoV Infection from an Asymptomatic Contact in Germany. *N Engl J Med* 382: 970-971. 10.1056/NEJMc2001468.

Sanyaolu, A., C. Okorie, A. Marinkovic, R. Patidar, K. Younis, P. Desai, Z. Hosein, I.

Padda, J. Mangat & M. Altaf (2020) Comorbidity and its Impact on Patients with COVID-19. *SN Compr Clin Med* 1-8. 10.1007/s42399-020-00363-4.

The World Bank Group (2020) *Indicators*. The World Bank Group.

<https://data.worldbank.org/indicator/>. [Accessed 14 December 2020].

Tian, Huaiyu, Yonghong Liu, Yidan Li, Chieh-Hsi Wu, Bin Chen, Moritz U. G.

Kraemer, Bingying Li, Jun Cai, Bo Xu, Qiqi Yang, Ben Wang, Peng Yang, Yujun Cui, Yimeng Song, Pai Zheng, Quanyi Wang, Ottar N. Bjornstad, Ruifu Yang, Bryan T. Grenfell, Oliver G. Pybus & Christopher Dye (2020) An investigation of transmission control measures during the first 50 days of the COVID-19 epidemic in China. *Science (New York, N.Y.)* 368: 638-642. 10.1126/science.abb6105.

WHO, The world Health Organization (2020a) *The Global Health Observatory*.

WHO. <https://www.who.int/data/gho/data/indicators>. [Accessed 10 November 2020].

WHO, World Health Organization (2020b) COVID-19 Weekly Epidemiological Update. WHO, Geneva

WHO, World Health Organization (2020c) *Coronavirus disease (COVID-19)*

pandemic. WHO. https://www.who.int/emergencies/diseases/novel-coronavirus-2019?gclid=Cj0KCQjwvb75BRD1ARIsAP6LcquozuVw17Rf-LzWsU1adVciTrGOydDS-8wTDOIO3hj3IJXL8WL7GwkaAjlQEALw_wcB.

[Accessed 9 August 2020].

Yao, Y., J. Pan, W. Wang, Z. Liu, H. Kan, Y. Qiu, X. Meng & W. Wang (2020)

Association of particulate matter pollution and case fatality rate of COVID-19

in 49 Chinese cities. *Sci Total Environ* 741: 140396.

10.1016/j.scitotenv.2020.140396.

Zhao, S., Z. Zhuang, P. Cao, J. Ran, D. Gao, Y. Lou, L. Yang, Y. Cai, W. Wang, D.

He & M. H. Wang (2020) Quantifying the association between domestic travel

and the exportation of novel coronavirus (2019-nCoV) cases from Wuhan,

China in 2020: a correlational analysis. *J Travel Med* 27. 10.1093/jtm/taaa022.

List of tables

Table 1: List of potential predictors of COVID-19 incidence

Table 2: List of potential predictors of COVID-19 fatality

Table 3: Descriptive statistics of COVID-19 incidence and fatality rate in African countries

Table 4: Ordinary Least Squares Regression Model

Table 5: Coefficients, residual and R² produced by (GWR) model

List of Figures

Figure 7: Analysis framework for identifying COVID-19 incidence and fatality determinants through GIS

Figure 8: Spatial auto correlation analysis

Figure 9: Hot spot analysis of COVID-19 incidence and fatality rates

Figure 10: Spatial distribution of local R² of COVID-19 incidence and fatality rates

Figure 5: Spatial distribution of residual

Figure 6: Observed versus predicted COVID-19 incidence and fatality rates in Africa